



WEATHER FORECAST FOR BN

10 - 13 APR 2021





WEATHER FORECAST – DHAKA

10.04.2021

Hourly	2 PM	4 PM	8 PM	11 PM
Temp. / Dew Point	33 / 24	34 / 23	31 / 23	29 / 24
Wind	9 km/h SSW	13 km/h SSW	19 km/h WSW	12 m/h SSW
Humidity	58%	54%	64%	74%
Chance of Precip	16%	9%	24%	15%
Cloud Cover	16%	4%	6%	6%
Conditions	Sunny	Sunny	Clear	Clear
Sunrise Sunset	05: 41 AM 18: 18 PM			

Conditions

Pressure : 1011 hpa

Visibility : 3.54 km

Ref: <https://www.wunderground.com/weather/bd/dhaka>



WEATHER FORECAST – CHATTOGRAM

10.04.2021

Hourly	2 PM	4 PM	8 PM	11 PM
Temp. / Dew Point	30 / 25	30 / 25	28 / 26	26 / 25
Wind	14 km/h WSW	14 km/h WSW	10 km/h W	6 km/h SSW
Humidity	74%	73%	90%	90%
Chance of Precip.	1%	1%	5%	11%
Cloud Cover	5%	4%	4%	6%
Conditions	Sunny	Sunny	Clear	Clear
Sunrise	05: 37 AM			
Sunset	18: 11 PM			

Conditions

Pressure : 1012 hpa

Visibility : 3.22 Km

Ref: <https://www.wunderground.com/weather/bd/chittagong>



WEATHER FORECAST – KHULNA

10.04.2021

Hourly	2 PM	4 PM	8 PM	11 PM
Temp. / Dew Point	34 / 24	33 / 23	29 / 24	27 / 24
Wind	13 km/h SSW	15 km/h SSW	9 km/h W	11 m/h SW
Humidity	55%	54%	76%	82%
Chance of Precip.	28%	82%	21%	16%
Cloud Cover	50%	72%	58%	22%
Conditions	Mostly Cloudy	Rain	Mostly Cloudy	Cloudy
Sunrise Sunset	05: 45 AM 18: 20 PM			

Conditions

Pressure : 1011 hpa
Visibility : 14.48 Km

Ref: <https://www.wunderground.com/weather/bd/khulna>



GENERAL WEATHER FORECAST – DHAKA

Description	11 Apr 2021	12 Apr 2021	13 Apr 2021
Temperature (C)	36°C/ 26°C	36°C/ 26°C	36°C/ 26°C
Summary	Sunny	Partly Cloudy	Sunny
Sun Rise/Set	5h 40m48s/18h18m30s	5h 39m54s/18h18m54s	5h 39m00s/18h19m12s
Day Length	12h37m42s	12h39m00s	12h40m12s
Moon Rise/ Set	5:22AM 5:44PM	5:53AM 6:34PM	6:25AM 7:25PM
Moon Phase/ illu	New Moon, 0%	New Moon, 0%	Waxing Crescent, 2%
Nautical Twilight	04:52, 19:07	04:50, 19:08	04:50, 19:09
Civil Twilight	05:18, 18:42	05:17, 18:41	05:17, 18:40
Humidity	D : 62% N : 72%	D : 66% N : 72%	D : 58% N : 71%
Barometer (mb)	1011	1011	1011
Visibility	Moderate	Moderate	Moderate
Precip Chance	8%	15%	5%
Wind (km/hr)	10 Km/h, SSW	12 Km/h, SSW	11 Km/h, SSW

Ref: <https://weather.com/weather/5day//BGXX0003:1:BG>



GENERAL WEATHER FORECAST– CHATTOGRAM

Description	11 Apr 2021	12 Apr 2021	13 Apr 2021
Temperature (C)	30°C / 26°C	30°C / 26°C	31°C / 26°C
Summary	Sunny	Sunny	Sunny
Sun Rise/Set	5h36m06s/ 18h11m30s	5h35m18s/ 18h11m54s	5h34m24s/ 18h12m12s
Day Length	12h35m24s	12h36m36s	12h37m48s
Moon Rise/ Set	5:16AM 5:38PM	5:48AM 6:27PM	6:21AM 7:35PM
Moon Phase/ illu	New Moon, 0%	New Moon, 0%	Waxing Crescent, 2%
Nautical Twilight	04:47, 19:02	04:46, 19:01	04:46, 19:00
Civil Twilight	05:14, 18:32	05:12, 18:34	05:12, 18:35
Humidity	D : 82% N : 95%	D : 82% N : 92%	D : 78% N : 96%
Barometer (mb)	1011	1012	1012
Visibility	Moderate	Moderate	Moderate
Precip Chance	10%	7%	13%
Wind (km/hr)	14 Km/h, W	13 Km/h, W	14 Km/h, W

Ref: <https://weather.com/weather/5day//BGXX0002:1:BG>



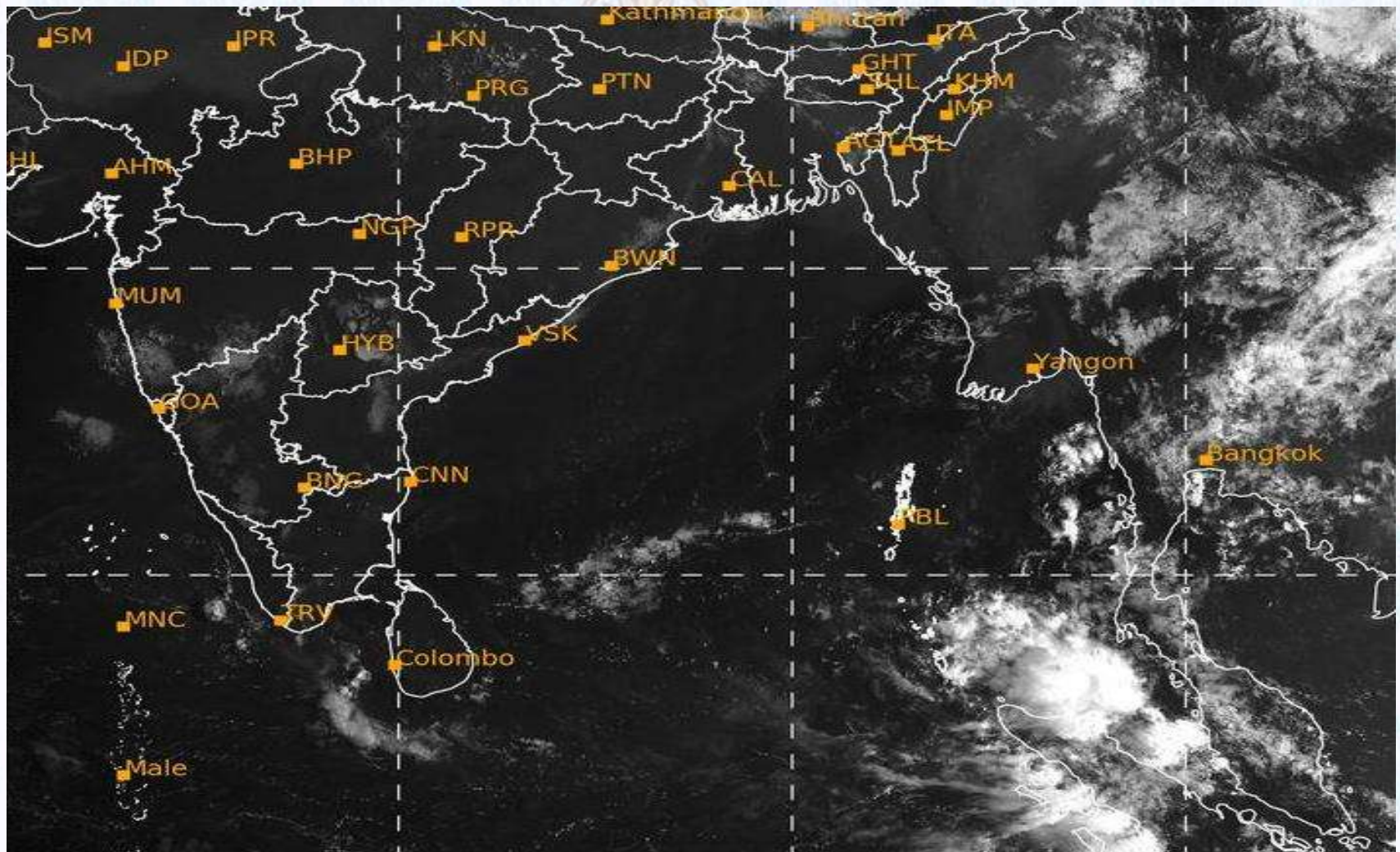
GENERAL WEATHER FORECAST – KHULNA

Description	11 Apr 2021	12 Apr 2021	13 Apr 2021
Temperature(C)	35°C/ 26°C	35°C/ 26°C	35°C/ 26°C
Summary	Sunny	Sunny	Sunny
Sun Rise/Set	5h44m54s/ 18h21m06s	5h44m06s/ 18h21m24s	5h43m06s/ 18h21m42s
Day Length	12h 36m 12s	12h 37m 18s	12h 38m 36s
Moon Rise/Set	5:26AM 5:47PM	5:57AM 6:37PM	6:55AM 7:45PM
Moon Phase/illu	New Moon, 0%	New Moon, 0%	Waxing Crescent, 2%
Nautical Twilight	04:55, 19:11	04:54, 19:10	04:54, 19:09
Civil Twilight	05:23, 18:43	05:21, 18:44	05:21, 18:45
Humidity	D : 70% N : 88%	D : 68% N : 88%	D : 65% N : 88%
Barometer (mb)	1010	1010	1010
Visibility	Moderate	Moderate	Moderate
Precip Chance	13%	9%	6%
Wind (km/hr)	9 Km/h, SW	9 Km/h, SW	13 Km/h, SW

Ref: <https://weather.com/weather/5day//BGXX0005:1:BG>



SATELLITE VIEW OF BAY OF BENGAL

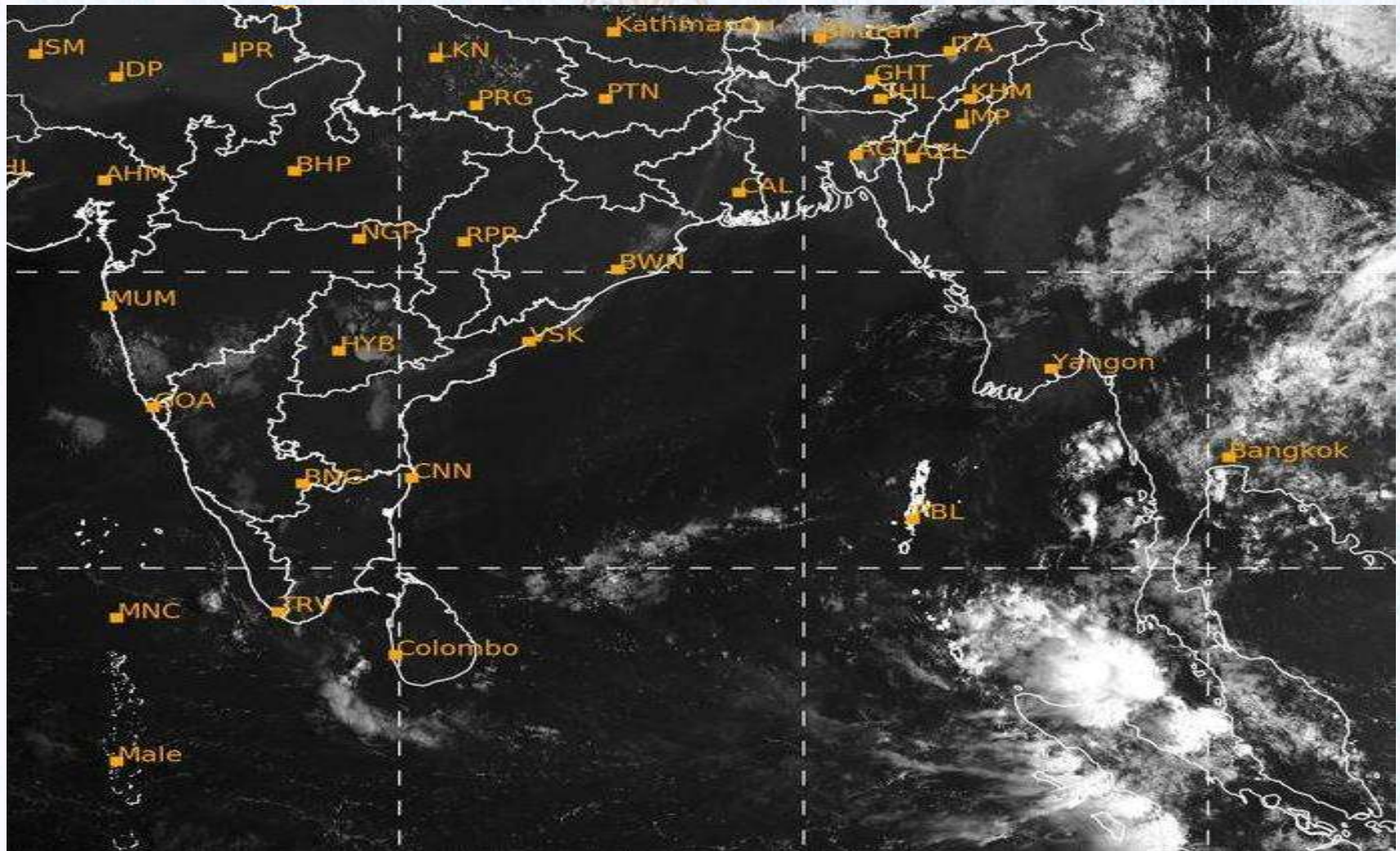


10/04/2021, 11:00 UTC MATSAT-IR

Ref: <http://satellite.imd.gov.in/insat.htm>



SATELLITE VIEW OF BAY OF BENGAL



10/04/2021, 11:00 MATSAT-VIS

Ref: <http://satellite.imd.gov.in/insat.htm>



Fleet Forecast Sea Area C-90 (Valid for 12 Hrs Commencing 1000 UTC of 10.04.2021)

Part One	NO STORM WARNING.	
Part Two	TROUGH OF LOW LIES OVER SOUTH BAY.	
Part Three	Weather	PARTLY CLOUDY OVER AREA C-90.
	Wind	WEST/SOUTH-WESTERLY, 08-12 KTS.
	Visibility	03-05 KMS, REDUCING TO 1500 M OR LESS IN HAZE.
	Outlook	FOR SUBSEQUENT 12 HOURS: LITTLE CHANGE.
	MSL Pressure	AT = 10,0000 UTC. CHATTOGRAM =1010 HPA



Inland River Port Warning (VALID TILL 06 PM OF 10.04.2020)

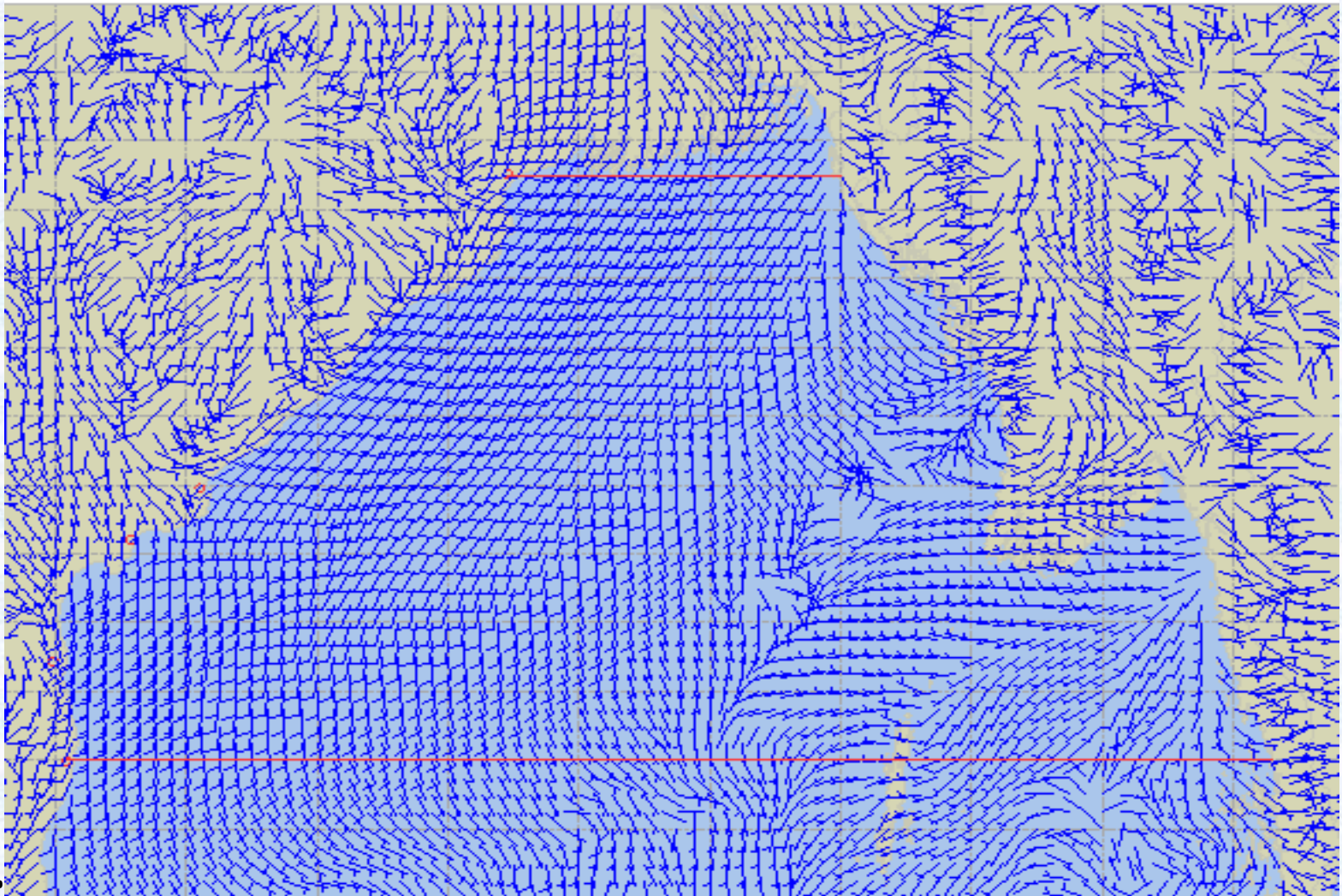
THERE IS NO INLAND RIVERPORT WARNING AND NO SIGNAL IS TO BE HOISTED.



Ref: <http://www.bmd.gov.bd/?/home>



Surface Wind Forecast- 11 Apr - 2021



Legend:



**Calm
Winds**



5 Knots



10 Knots



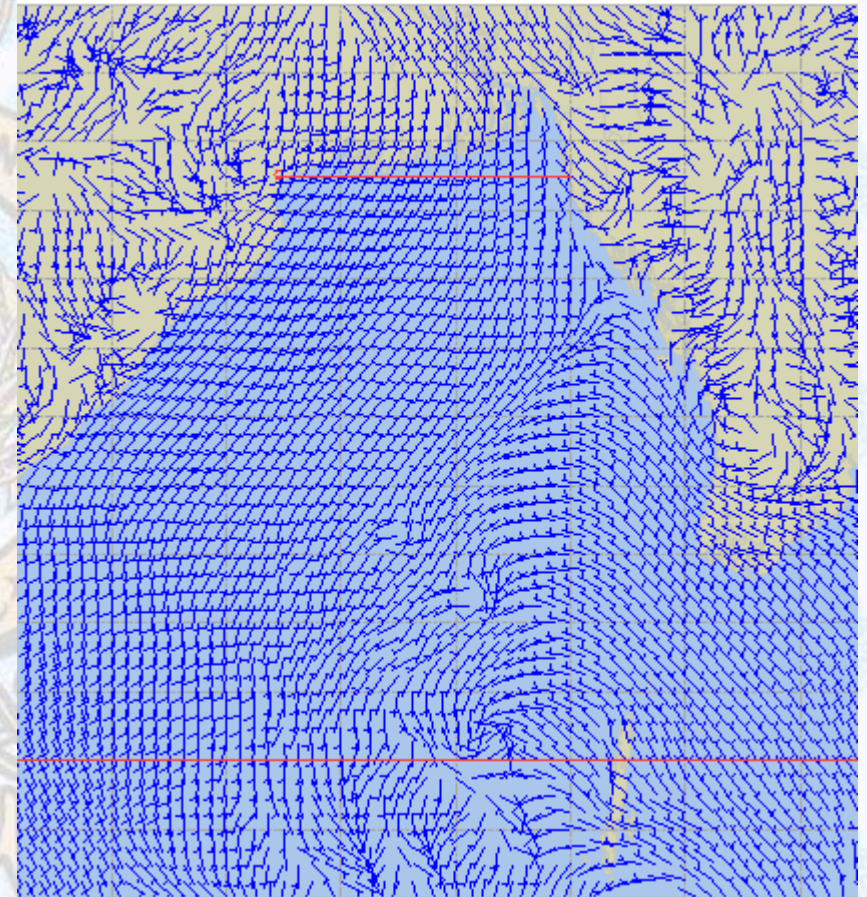
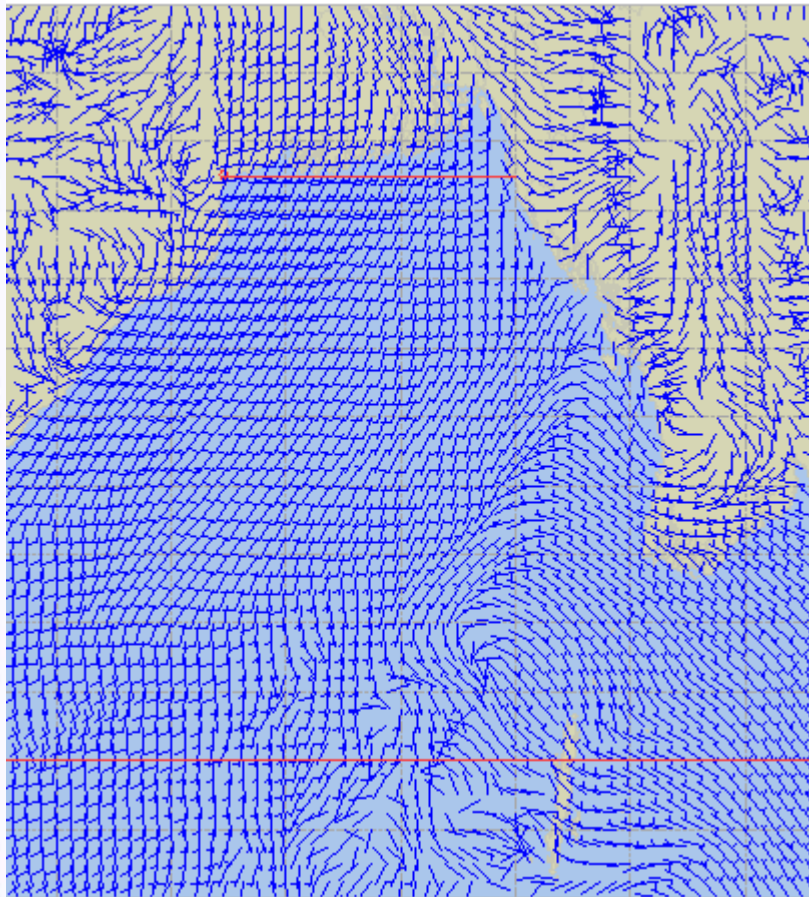
60 Knots



Surface Wind Forecast – 12 & 13 Apr - 2021

12 Apr 21 Monday

13 Apr 21 Tuesday



Legend:



Calm
Winds



5 Knots



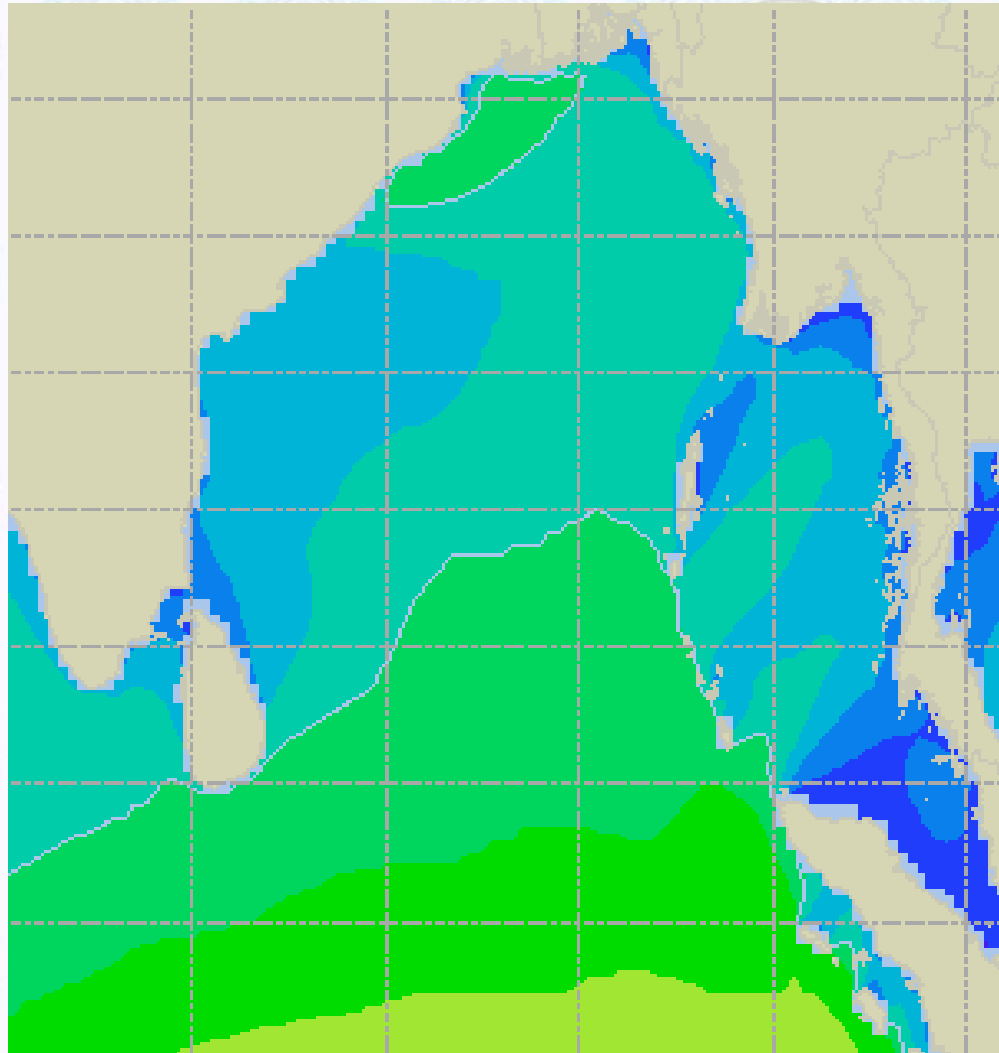
10 Knots



60 Knots



Sea State Forecast – 11 Apr - 2021



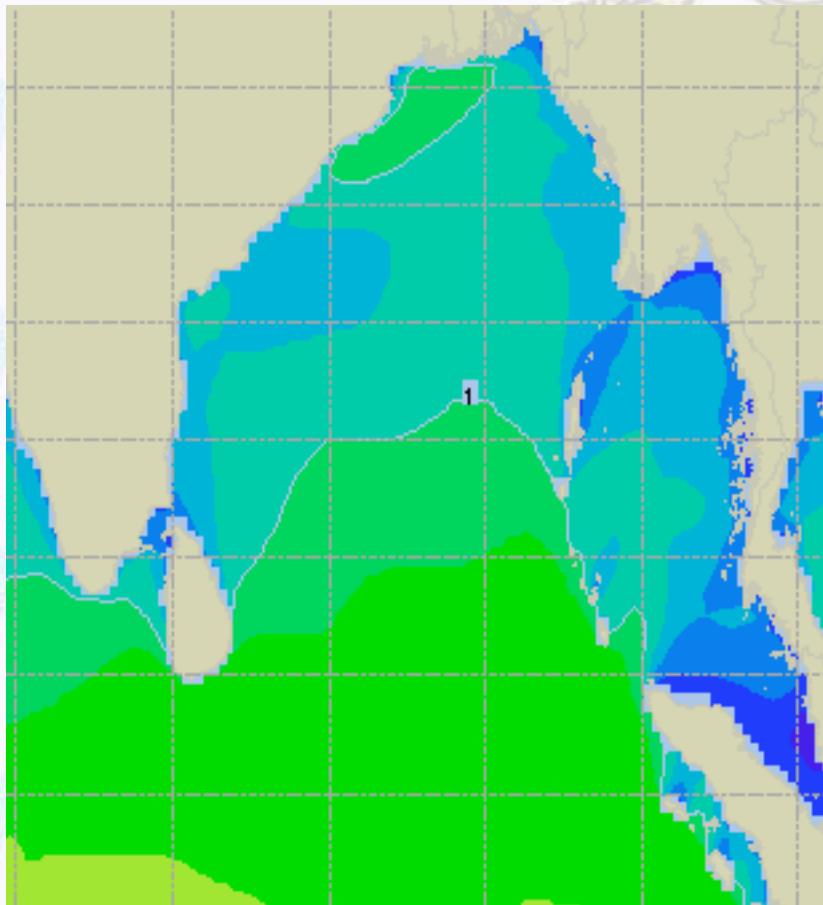
Sea State	Ht (m)
0	0
1	0 - 0.1
2	0.1 - 0.5
3	0.5 - 1.25
4	1.25 - 2.5
5	2.5 - 4.0
6	4 - 6
7	6 - 9
8	9 - 14
9	Over 14



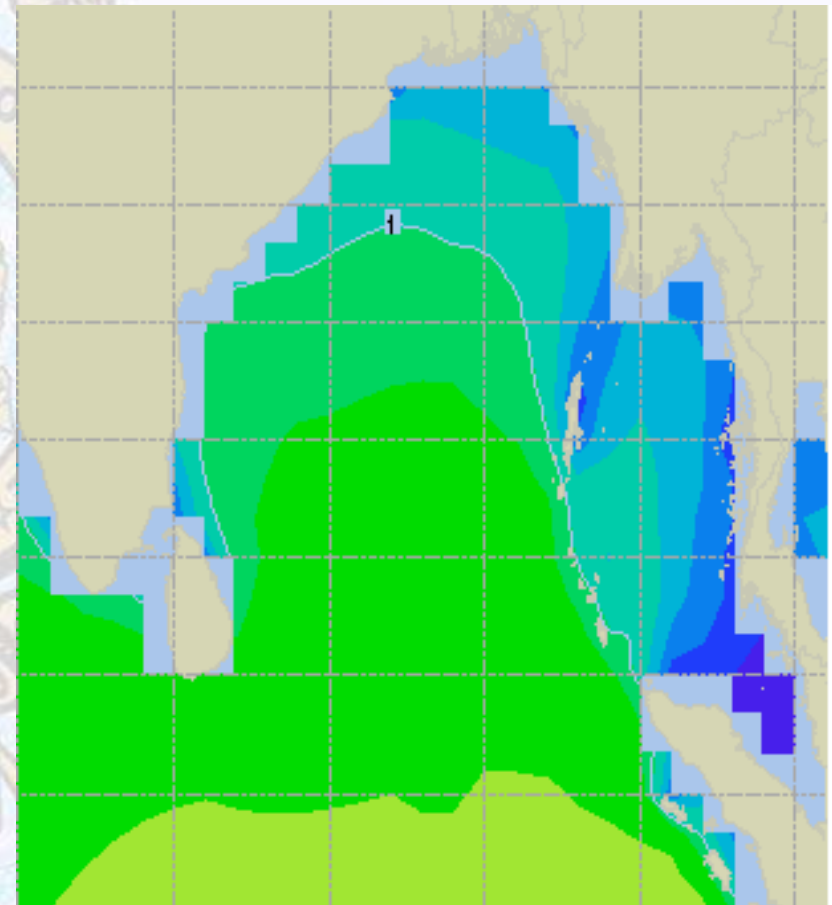


Sea State Forecast – 12 & 13 Apr - 2021

12 Apr 21 Monday



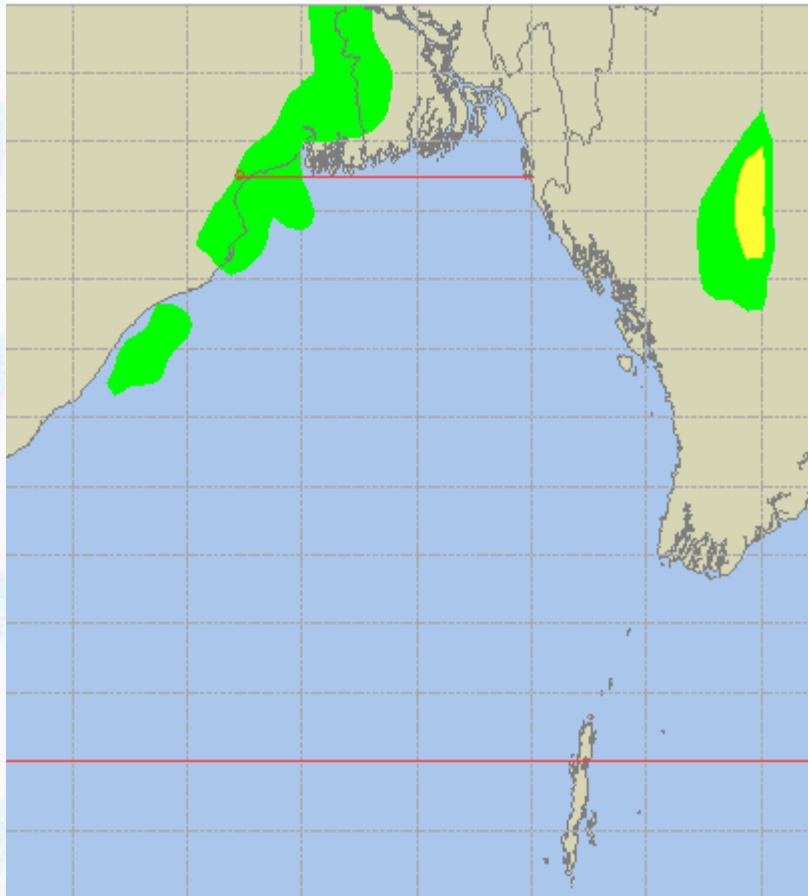
13 Apr 21 Tuesday



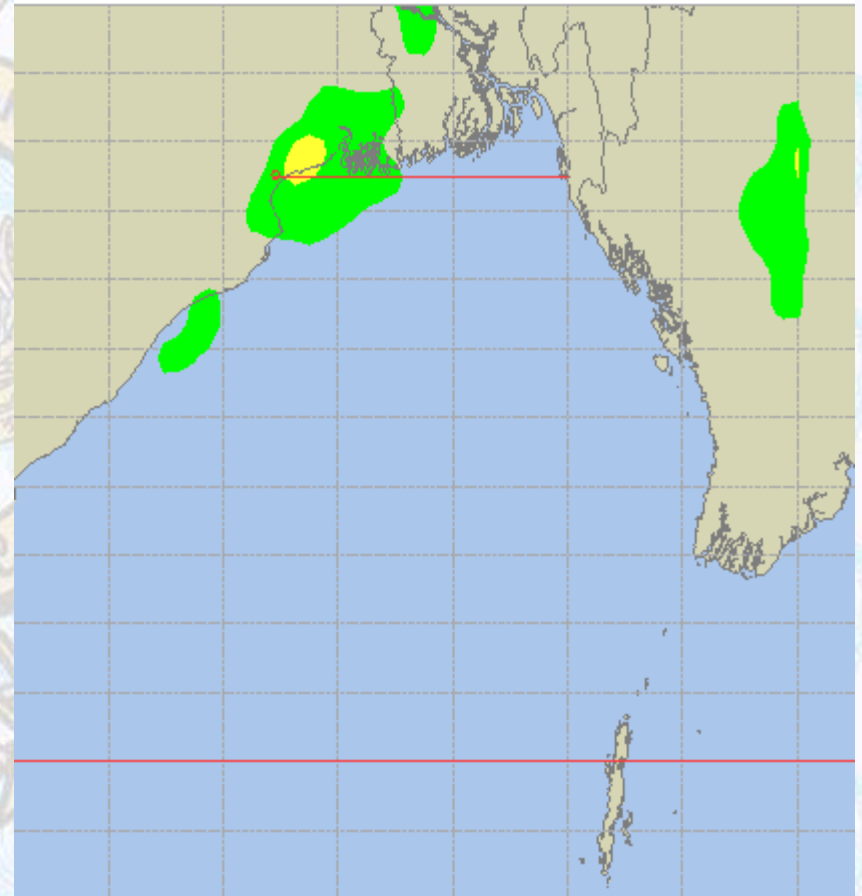


Peak Gusting Possibilities– 11 & 12 Apr 2021

11 Apr 21 Sunday



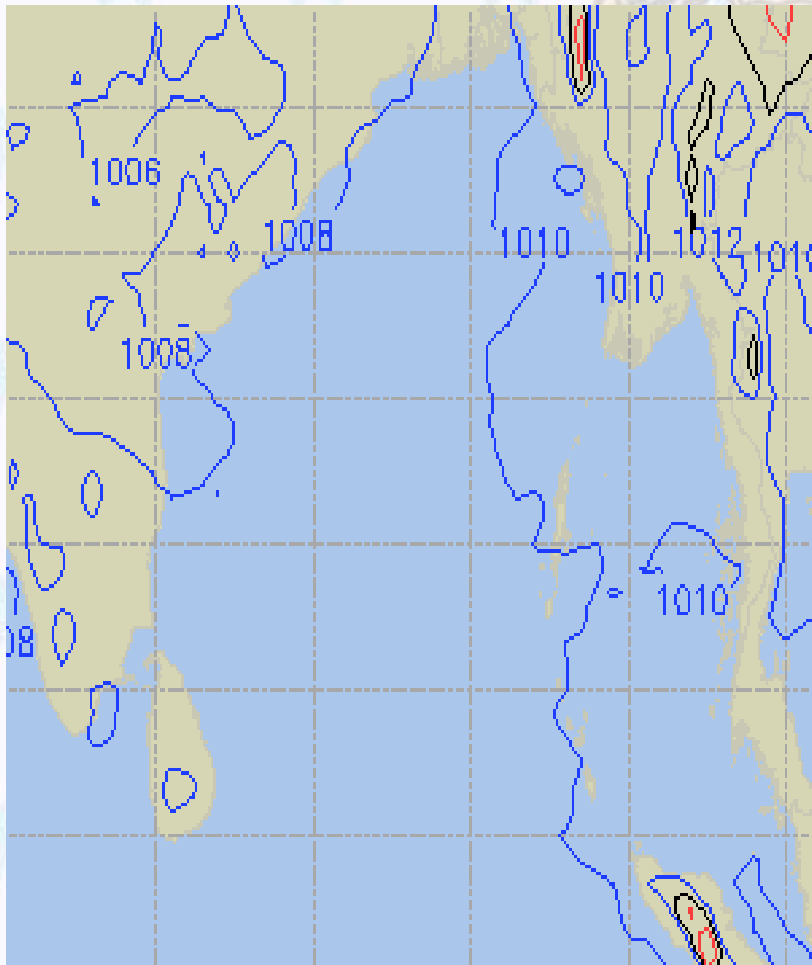
12 Apr 21 Monday



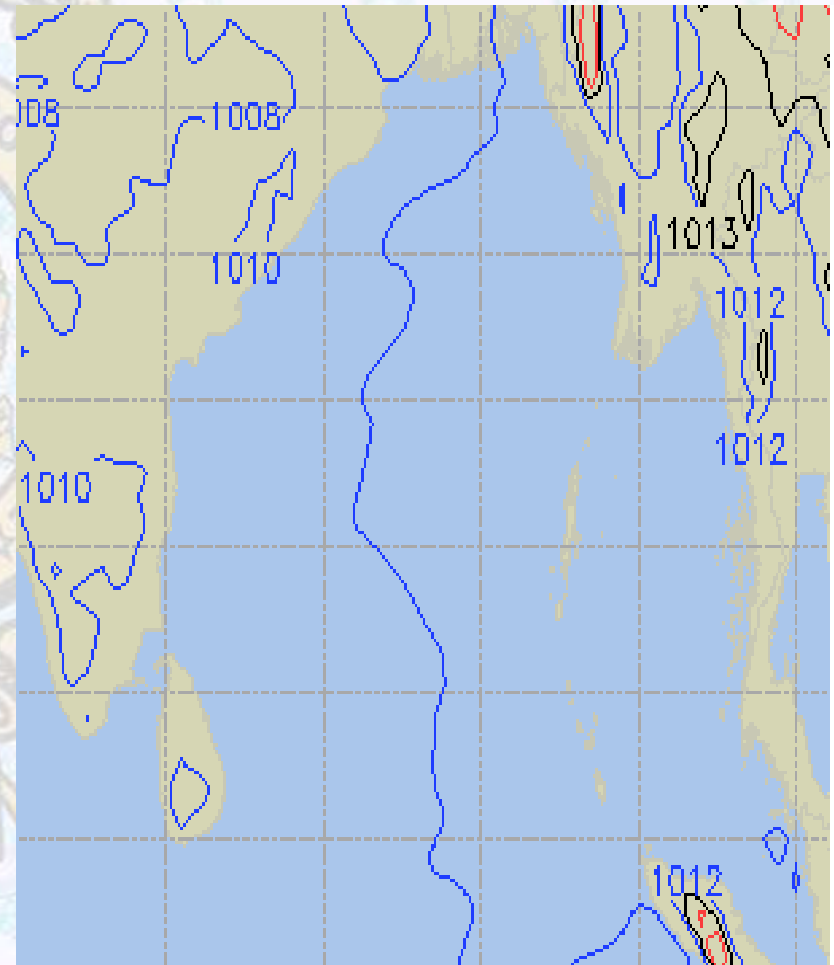


Surface Pressure forecast – 11 & 12 Apr 2021

11 Apr 21 Sunday



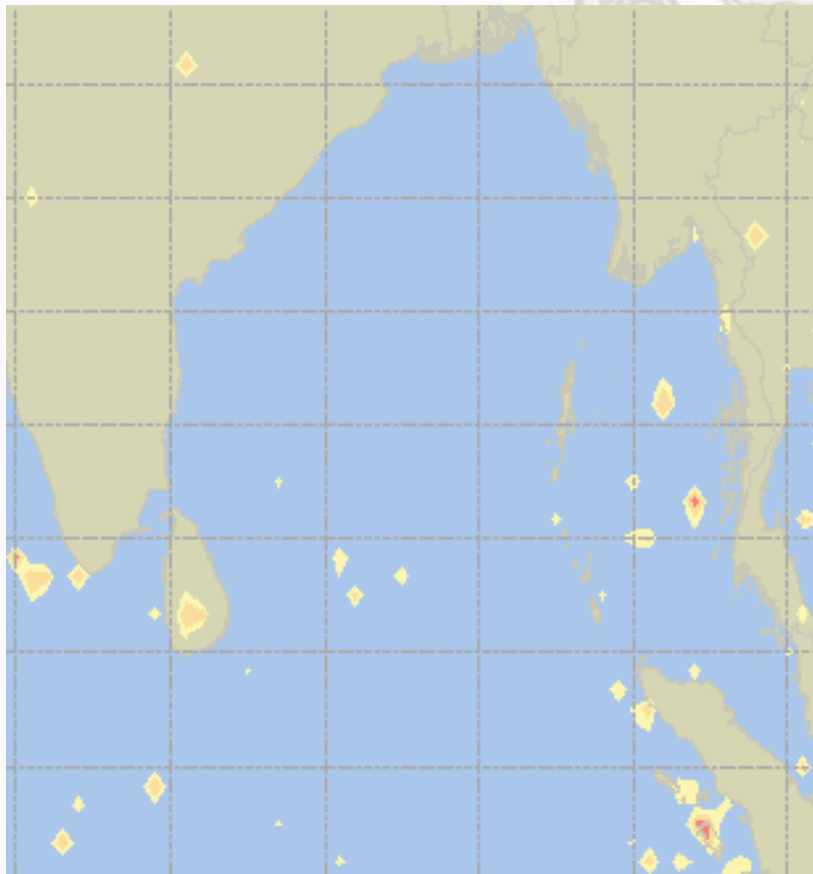
12 Apr 21 Monday



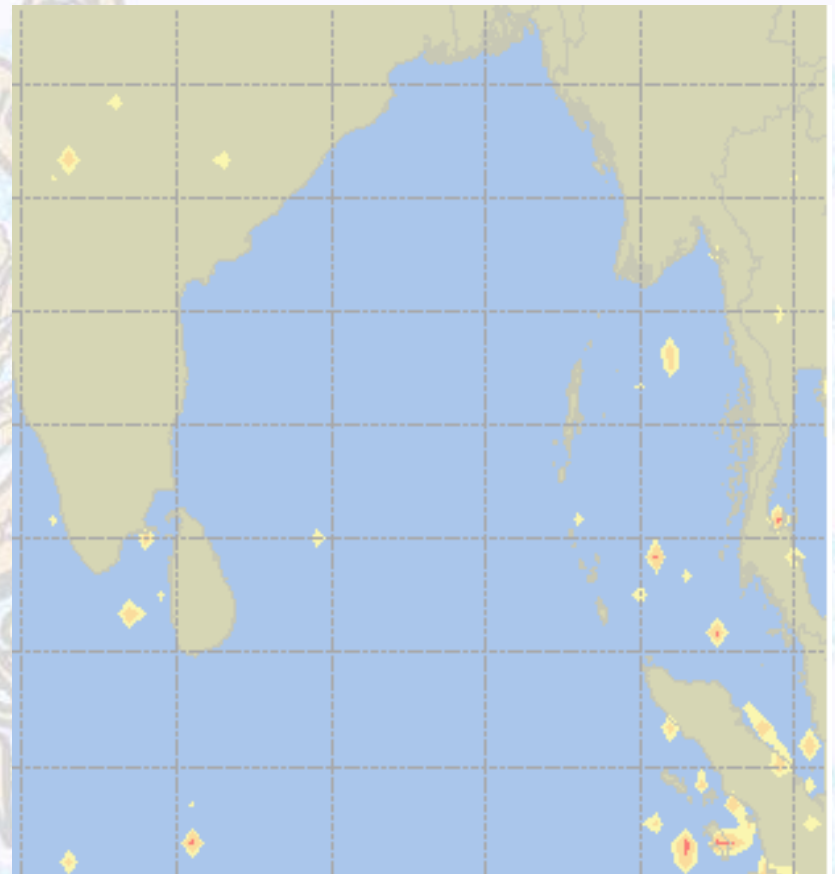


Visibility at Sea Forecast – 11 & 12 Apr 2021

11 Apr 21 Sunday



12 Apr 21 Monday



Visibility Scale:

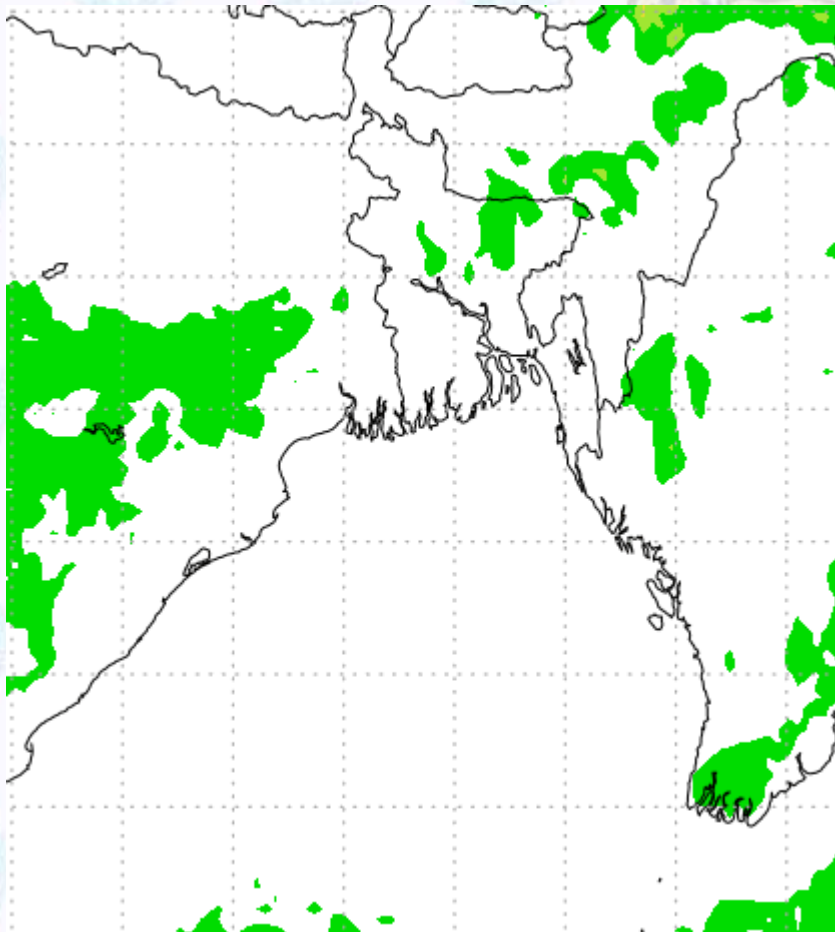


Ref (Slide 12-18): <http://www.weatheronline.co.uk/marine/weather?LEVEL>

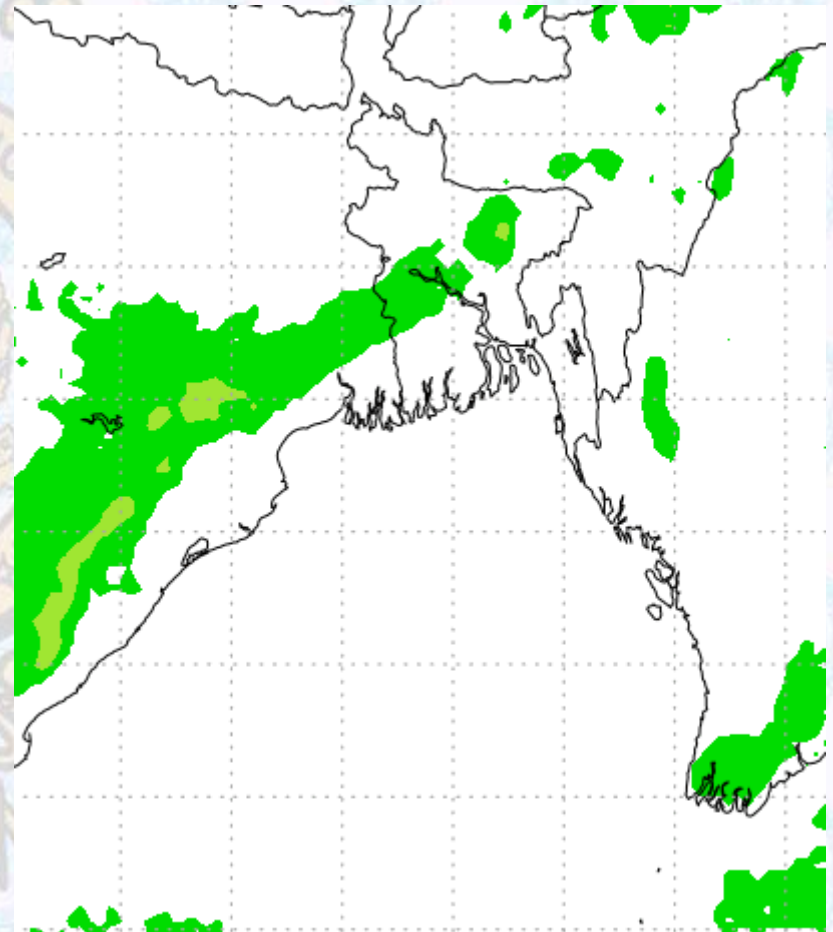


Precipitation

Rain(mm) 11 & 12 Apr 21



Rain(mm) 12 & 13 Apr 21



Precipitation Scale (mm):





Tidal Information

KHAL NO. 10

COX'S BAZAR

HIRAN POINT

11 Apr 2021	Time	Height		Time	Height		Time	Height
	0040	4.33		0442	0.36		0431	0.46
	0709	0.45		1025	3.17		1034	2.87
	1302	4.41		1659	0.40		1647	0.55
	1923	0.55		2239	3.22		2242	2.79
12 Apr 2021	Time	Height		Time	Height		Time	Height
	0106	4.39		0514	0.29		0459	0.42
	0736	0.44		1057	3.29		1101	2.92
	1325	4.49		1731	0.35		1717	0.54
	1951	0.53		2310	3.24		2309	2.78
13 Apr 2021	Time	Height		Time	Height		Time	Height
	0130	4.42		0544	0.25		0524	0.42
	0800	0.43		1129	3.32		1127	2.93
	1347	4.53		1801	0.35		1744	0.56
	2017	0.53		2341	3.20		2335	2.74