



WEATHER FORECAST FOR BN

24 FEB - 27 FEB 2021





WEATHER FORECAST – DHAKA

24.02.2021

Hourly	2 PM	4 PM	8 PM	11 PM
Temp. / Dew Point	29 / 17	29 / 14	24 / 16	24 / 18
Wind	9 km/h WSW	11 km/h W	2 km/h WNW	3 m/h S
Humidity	43%	41%	59%	66%
Chance of Precip	1%	1%	1%	2%
Cloud Cover	2%	2%	1%	1%
Conditions	Sunny	Sunny	Clear	Clear
Sunrise Sunset	06: 24 AM 17: 58 PM			

Conditions

Pressure : 1014 hpa

Visibility : 1.25 km

Ref: <https://www.wunderground.com/weather/bd/dhaka>



WEATHER FORECAST – CHATTOGRAM

24.02.2021

Hourly	2 PM	4 PM	8 PM	11 PM
Temp. / Dew Point	28 / 16	28 / 16	24 / 18	22 / 18
Wind	12 km/h W	12 km/h W	9 km/h W	5 km/h SW
Humidity	46%	47%	70%	79%
Chance of Precip.	1%	1%	1%	3%
Cloud Cover	3%	8%	2%	6%
Conditions	Sunny	Sunny	Clear	Clear
Sunrise	06: 19 AM			
Sunset	17: 55 PM			

Conditions

Pressure : 1012 hpa

Visibility : 5.6 Km

Ref: <https://www.wunderground.com/weather/bd/chittagong>



WEATHER FORECAST – KHULNA

24.02.2021

Hourly	2 PM	4 PM	8 PM	11 PM
Temp. / Dew Point	30 / 14	30 / 14	25 / 16	22 / 18
Wind	7 km/h W	7 km/h W	3 km/h SSW	3 m/h SSW
Humidity	38%	37%	59%	76%
Chance of Precip.	1%	1%	1%	3%
Cloud Cover	19%	8%	5%	3%
Conditions	Sunny	Sunny	Clear	Clear
Sunrise Sunset	06: 27 AM 18: 02 PM			

Conditions

Pressure : 1014 hpa

Visibility : 7.5 Km

Ref: <https://www.wunderground.com/weather/bd/khulna>



GENERAL WEATHER FORECAST – DHAKA

Description	25 Feb 2021	26 Feb 2021	27 Feb 2021
Temperature (C)	32 °C/ 20 °C	32 °C/ 20 °C	32 °C/ 21 °C
Summary	Sunny	Sunny	Sunny
Sun Rise/Set	6h24m00s/17h59m18s	6h23m06s/17h59m48s	6h22m18s/18h00m18s
Day Length	11h35m18s	11h36m42s	11h38m00s
Moon Rise/ Set	4:01PM 4:57AM	5:03PM 5:55AM	6:06PM 6:28AM
Moon Phase/ illu	Waxing Gibbous, 94%	Waxing Gibbous, 98%	Full Moon, 99%
Nautical Twilight	05:36, 18:48	05:36, 18:49	05:36, 18:49
Civil Twilight	06:04, 18:22	06:04, 18:22	06:04, 18:22
Humidity	D : 63% N : 79%	D : 62% N : 80%	D : 60% N : 80%
Barometer (mb)	1008	1007	1007
Visibility	Moderate	Moderate	Moderate
Precip Chance	5%	6%	6%
Wind (mph)	11 Km/h SW	11 Km/h WSW	9 Km/h SW

Ref: <https://weather.com/weather/5day//BGXX0003:1:BG>



GENERAL WEATHER FORECAST– CHATTOGRAM

Description	25 Feb 2021	26 Feb 2021	27 Feb 2021
Temperature (C)	28 °C / 20 °C	28 °C / 20 °C	28 °C / 21 °C
Summary	Sunny	Sunny	Sunny
Sun Rise/Set	6h17m12s/ 17h54m36s	6h16m18s/ 17h55m06s	6h15m36s/ 17h55m36s
Day Length	11h37m24s	11h38m48s	11h40m00s
Moon Rise/ Set	3:58PM 4:48AM	4:59PM 5:36AM	6:06PM 6:28AM
Moon Phase/ illu	Waxing Gibbous, 94%	Waxing Gibbous, 98%	Full Moon, 99%
NauticalTwilight	05:29, 18:43	05:29, 18:43	05:29, 18:43
Civil Twilight	05:55, 18:17	05:55, 18:17	05:55, 18:17
Humidity	D : 82% N : 100%	D : 82% N : 100%	D : 82% N : 100%
Barometer (mb)	1010	1009	1010
Visibility	Moderate	Moderate	Moderate
Precip Chance	5%	5%	5%
Wind (mph)	13 Km/h SSW	13 Km/h SW	9 Km/h SW

Ref: <https://weather.com/weather/5day//BGXX0002:1:BG>



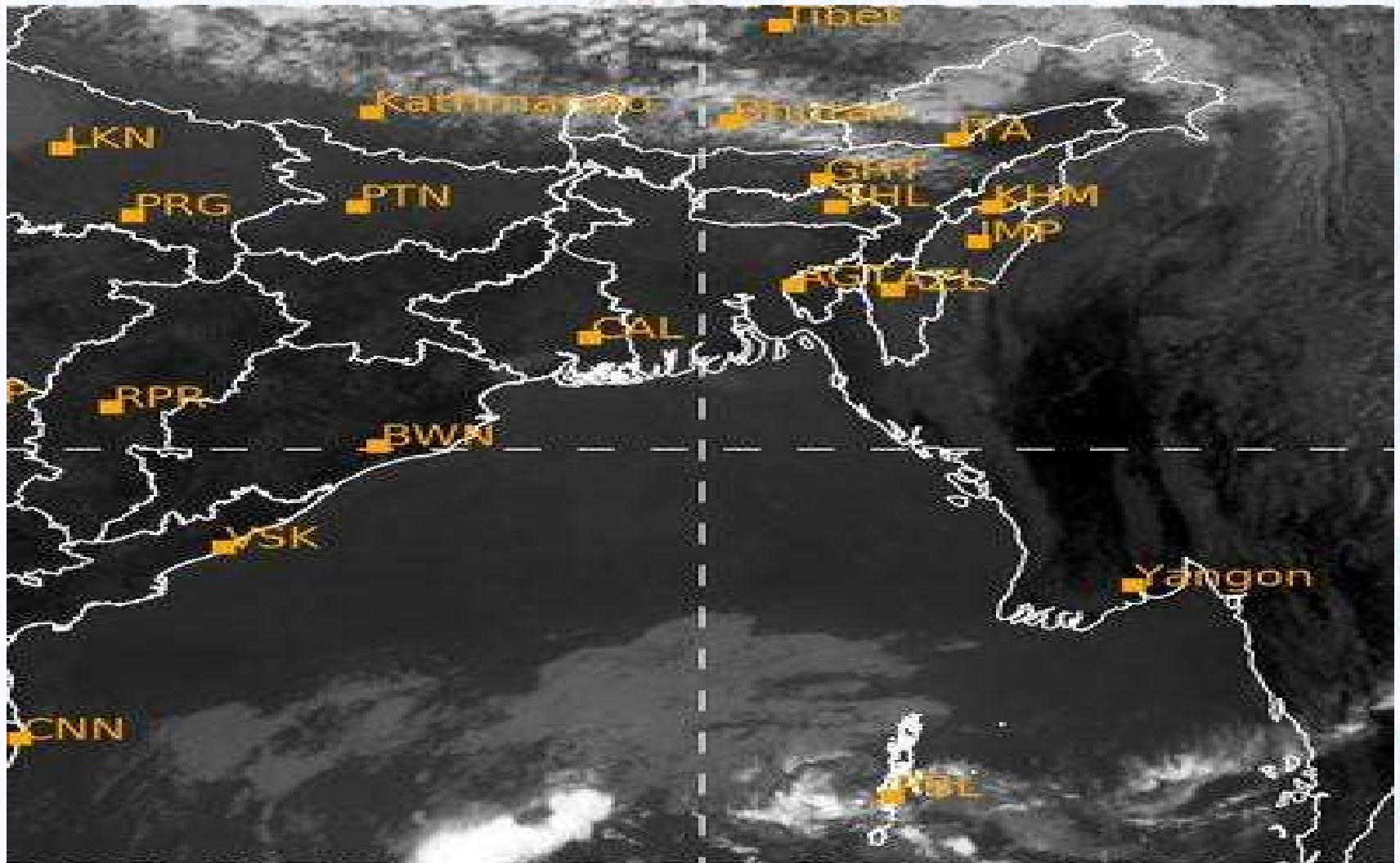
GENERAL WEATHER FORECAST – KHULNA

Description	25 Feb 2021	26 Feb 2021	27 Feb 2021
Temperature(C)	33°C/ 20°C	34°C/ 21°C	34°C/ 21°C
Summary	Sunny	Sunny	Sunny
Sun Rise/Set	6h26m42s/ 18h03m24s	6h25m48s/ 18h03m54s	6h25m00s/ 18h04m24s
Day Length	11h36m42s	11h38m06s	11h36m42s
Moon Rise/Set	4:06PM 4:58AM	5:08PM 5:46AM	6:06PM 6:28AM
Moon Phase/illu	Waxing Gibbous, 94%	Waxing Gibbous, 98%	Full Moon, 99%
Nautical Twilight	05:39, 18:52	05:39, 18:52	05:39, 18:52
Civil Twilight	06:05, 18:26	06:05, 18:26	06:05, 18:26
Humidity	D : 61% N : 88%	D : 59% N : 87%	D : 63% N : 87%
Barometer (mb)	1009	1008	1007
Visibility	Moderate	Moderate	Moderate
Precip Chance	7%	5%	5%
Wind (mph)	11 km/h SW	10 km/h WSW	10 km/h WSW

Ref: <https://weather.com/weather/5day//BGXX0005:1:BG>



SATELLITE VIEW OF BAY OF BENGAL

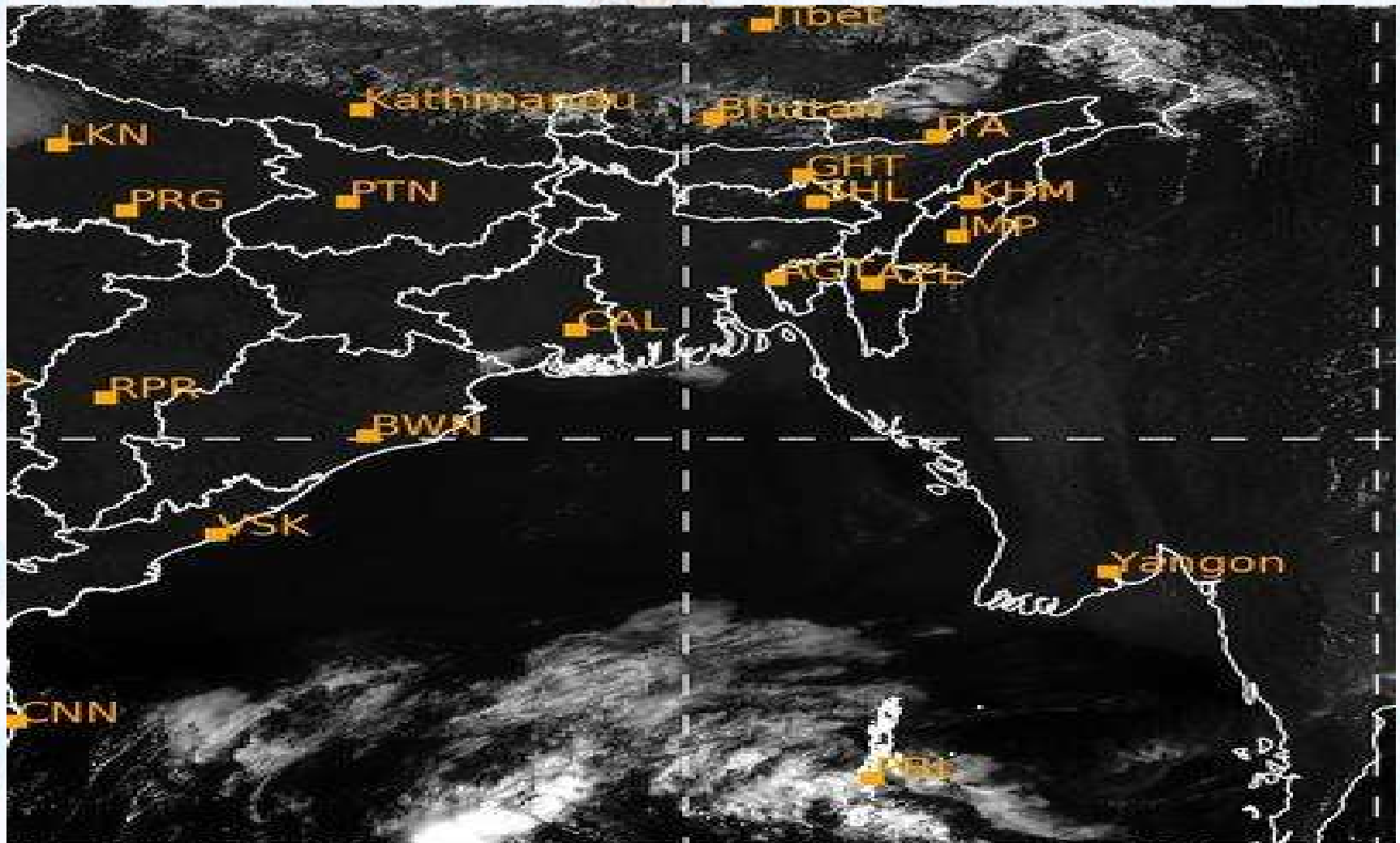


24/02/2021, 11:00 UTC MATSAT-IR

Ref: <http://satellite.imd.gov.in/insat.htm>



SATELLITE VIEW OF BAY OF BENGAL



24/02/2021, 11:00 MATSAT-VIS

Ref: <http://satellite.imd.gov.in/insat.htm>



Fleet Forecast Sea Area C-90 (Valid for 12 Hrs Commencing 1000 UTC of 24.02.2021)

Part One	NO STORM WARNING.	
Part Two	SEASONAL LOW LIES OVER SOUTH BAY.	
Part Three	Weather	SEASONAL OVER AREA C-90.
	Wind	N/NW'LY, 08-15 KTS.
	Visibility	03-05 KMS REDUCING TO 1500 M OR LESS IN MIST/HAZE.
	Outlook	FOR SUBSEQUENT 12 HOURS: LITTLE CHANGE.
	MSL Pressure	AT = 24,0000 UTC. CHATTOGRAM =1014 HPA



Inland River Port Warning (VALID TILL 06 PM OF 24.02.2020)

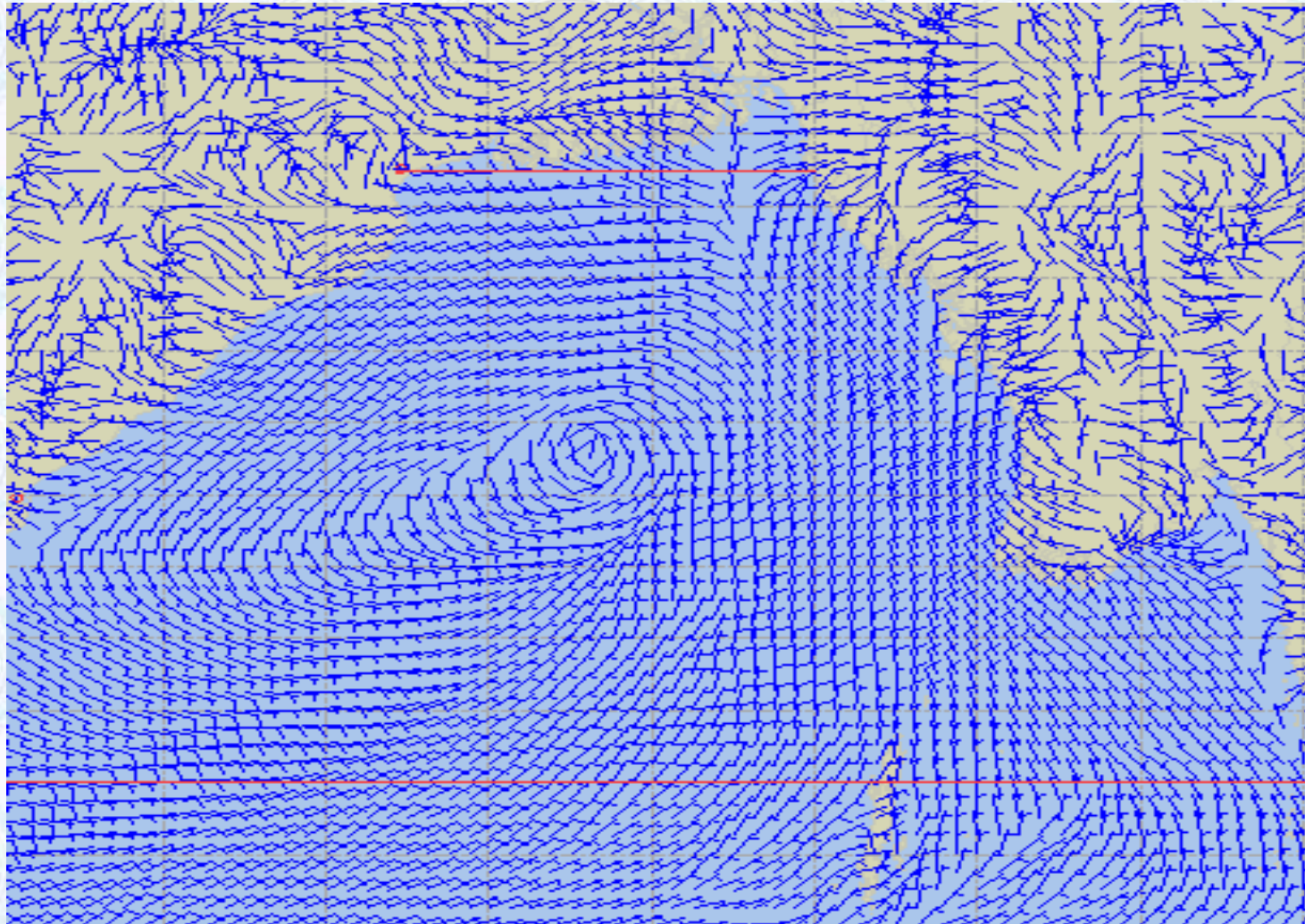
THERE IS NO INLAND RIVERPORT WARNING AND NO SIGNAL IS TO BE HOISTED.



Ref: <http://www.bmd.gov.bd/?/home>



Surface Wind Forecast- 25 Feb - 2021



Legend:



**Calm
Winds**



5 Knots



10 Knots



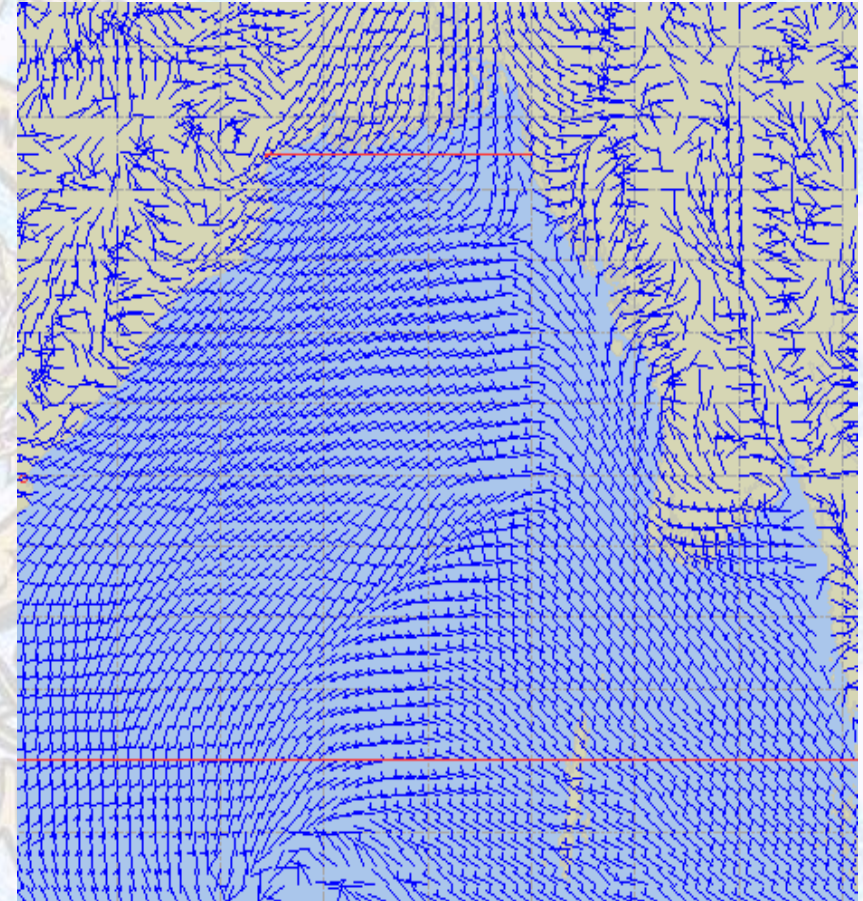
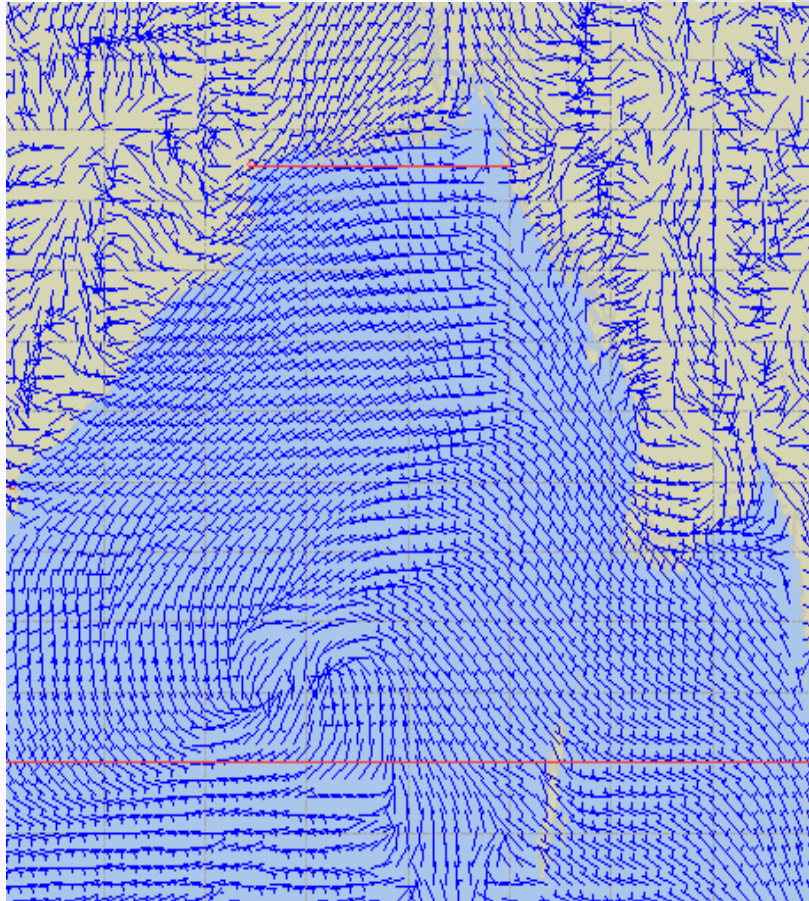
60 Knots



Surface Wind Forecast – 26 & 27 Feb - 2021

26 Feb 21 Friday

27 Feb 21 Saturday



Legend:



Calm
Winds



5 Knots



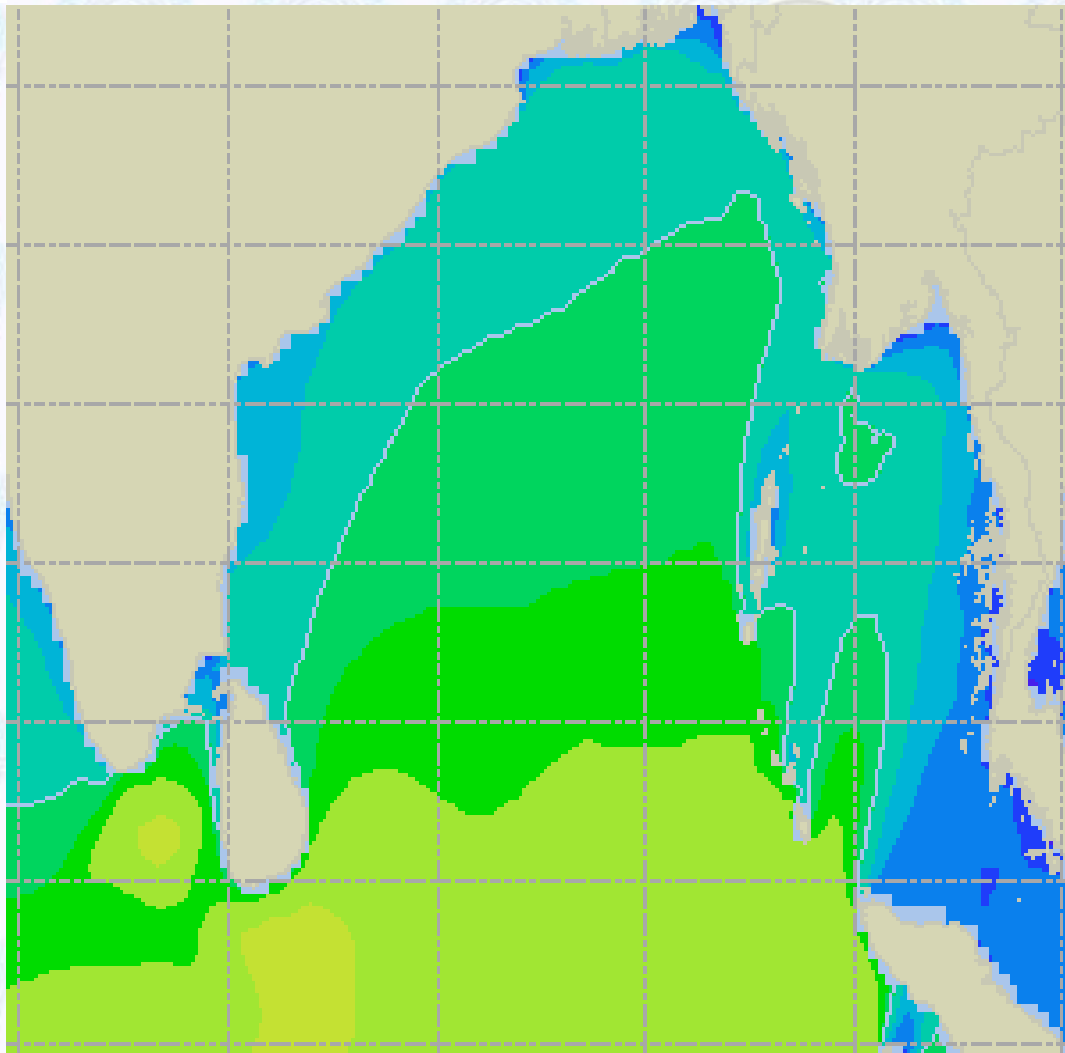
10 Knots



60 Knots



Sea State Forecast – 25 Feb - 2021



Sea State	Ht (m)
0	0-0.1
1	0-0.1
2	0.1-0.5
3	0.5-1.25
4	1.25-2.5
5	2.5-4.0
6	4-6
7	6-9
8	9-14
9	Over 14

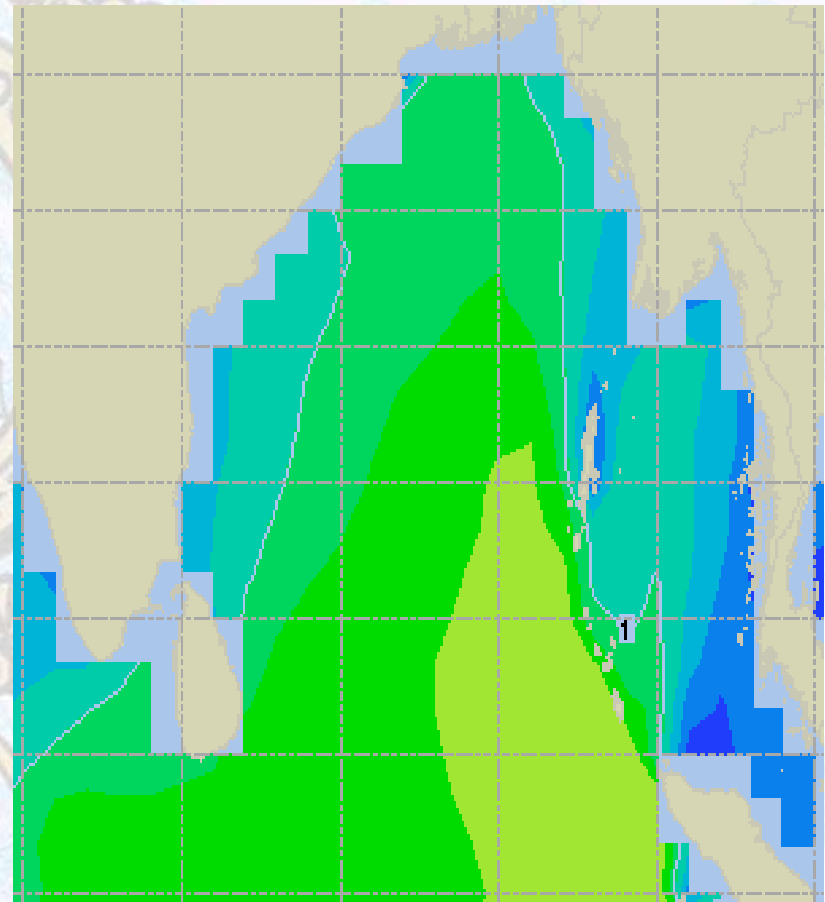
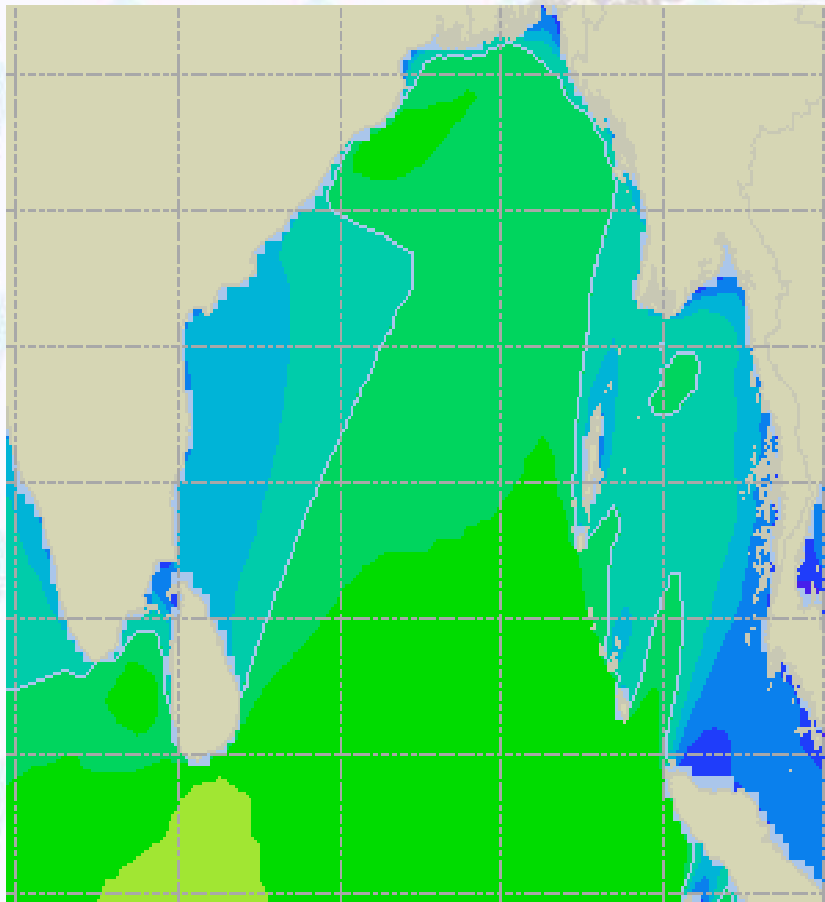




Sea State Forecast – 26 & 27 Feb - 2021

26 Feb 21 Friday

27 Feb 21 Saturday

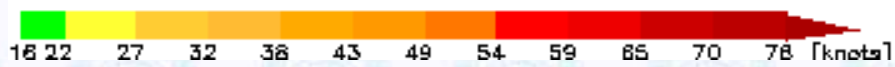
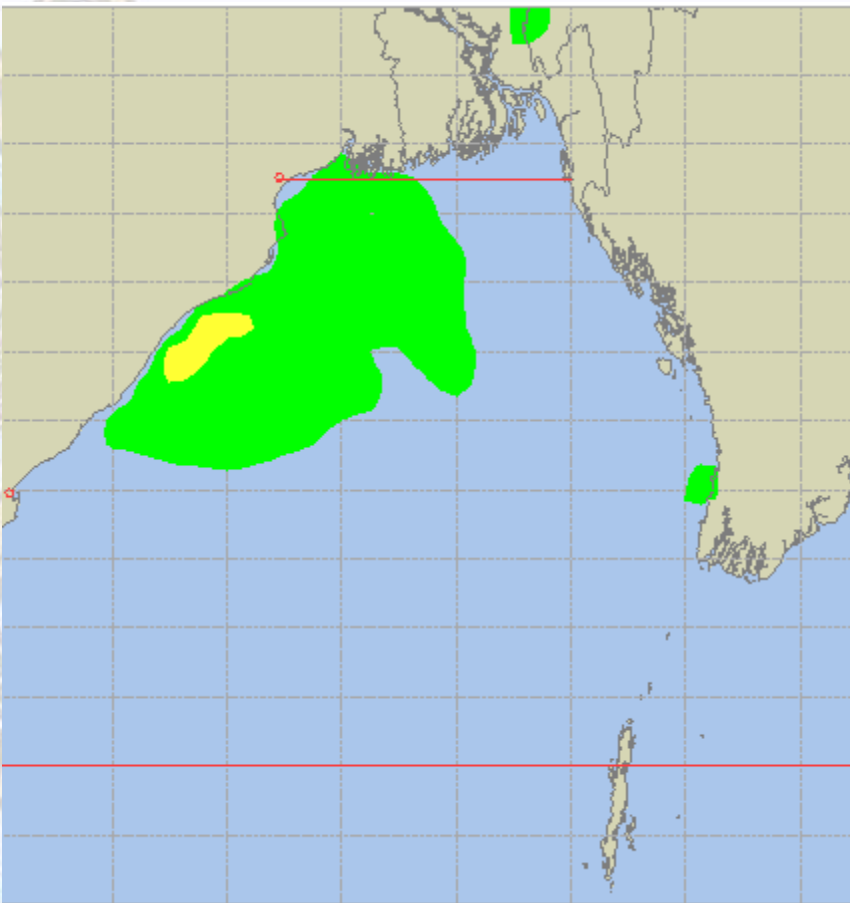
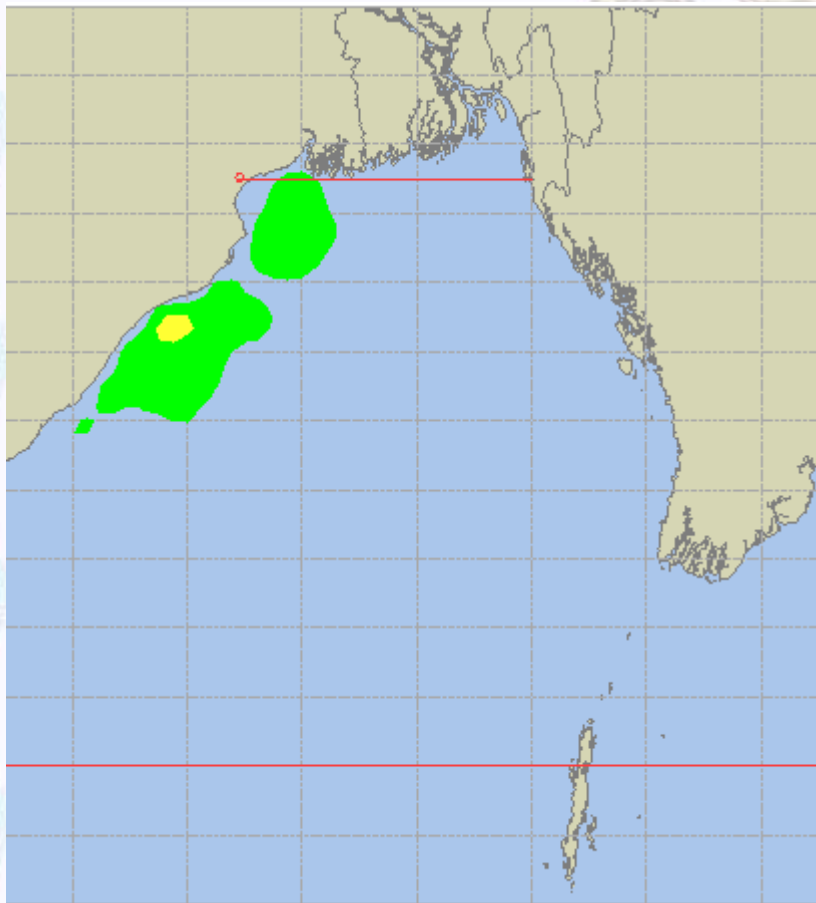




Peak Gusting Possibilities– 25 & 26 Feb 2021

25 Feb 21 Thursday

26 Feb 21 Friday

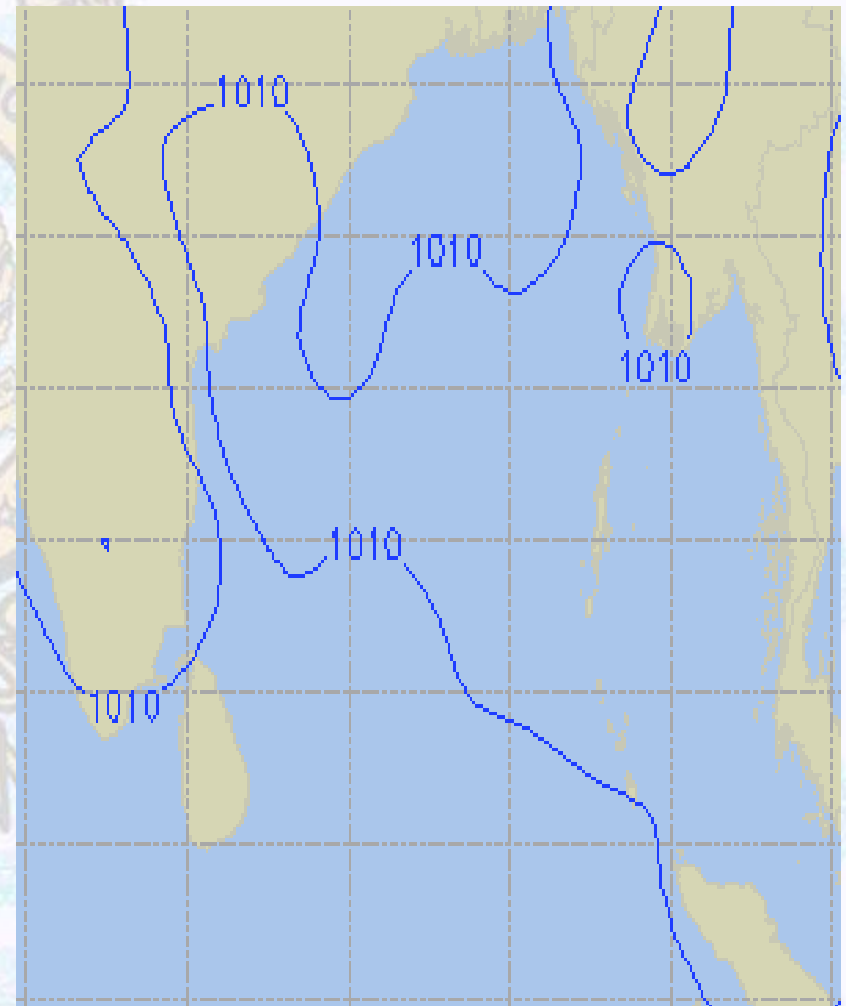
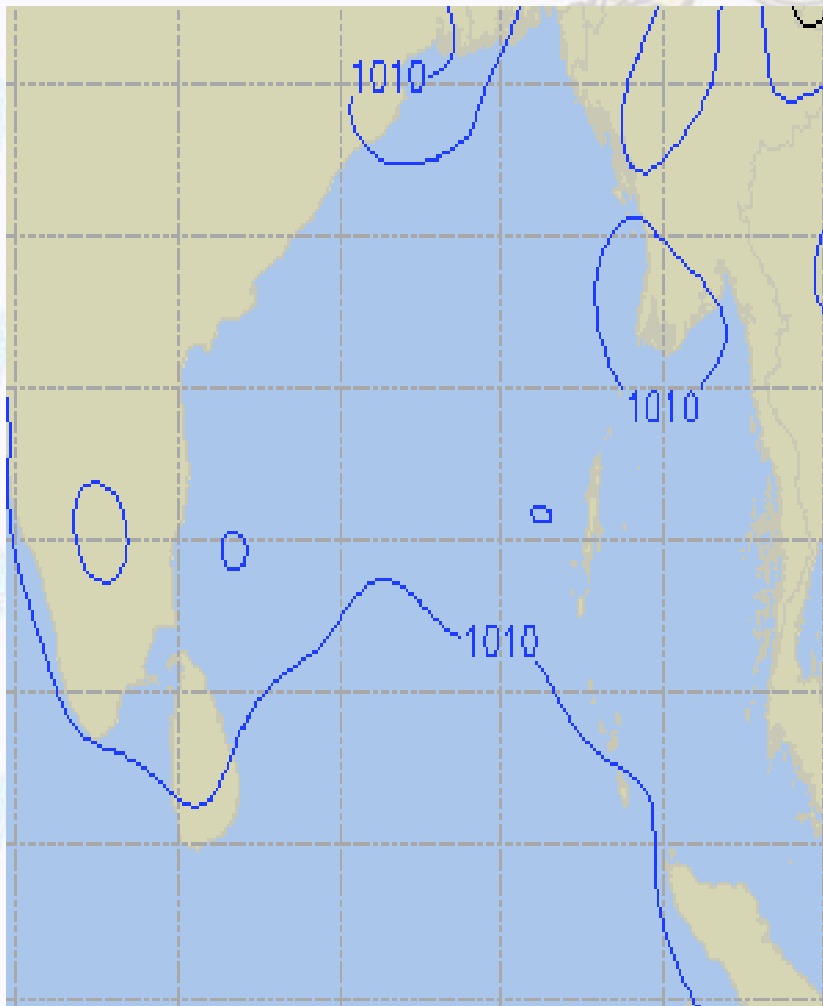




Surface Pressure forecast – 25 & 26 Feb 2021

25 Feb 21 Thursday

26 Feb 21 Friday

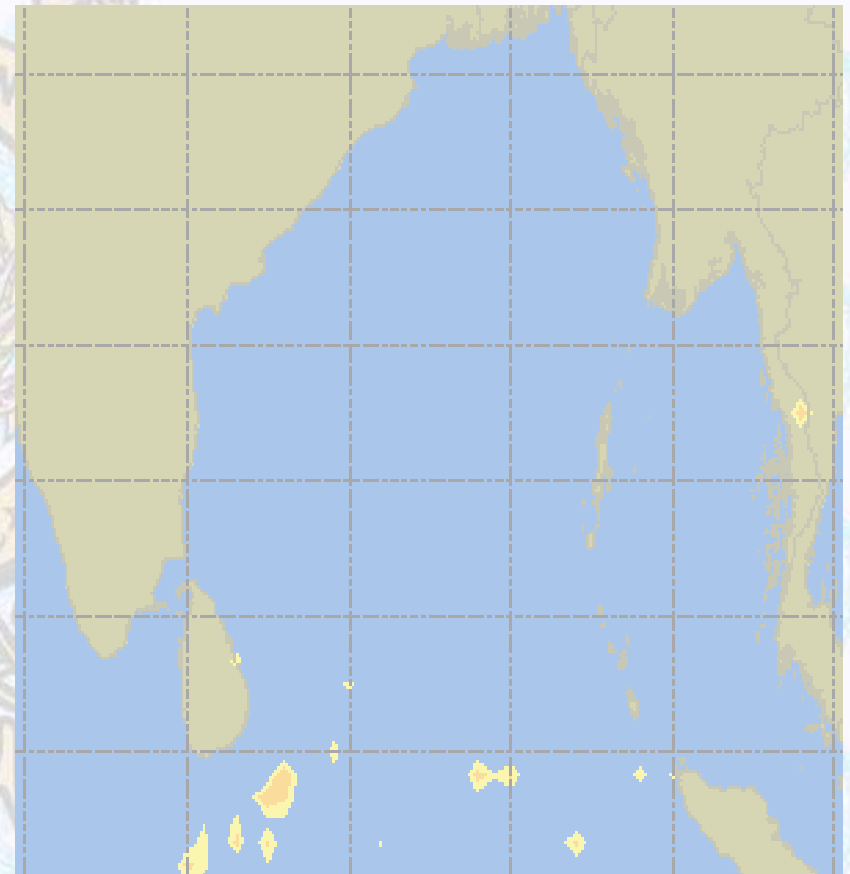
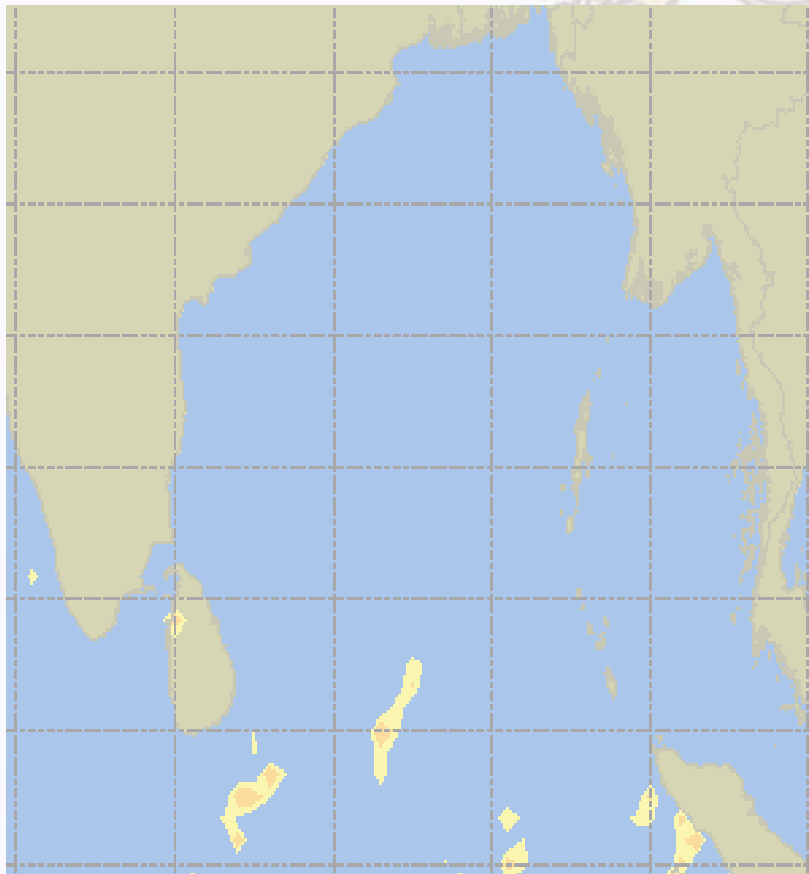




Visibility at Sea Forecast – 25 & 26 Feb 2021

25 Feb 21 Thursday

26 Feb 21 Friday



Visibility Scale:



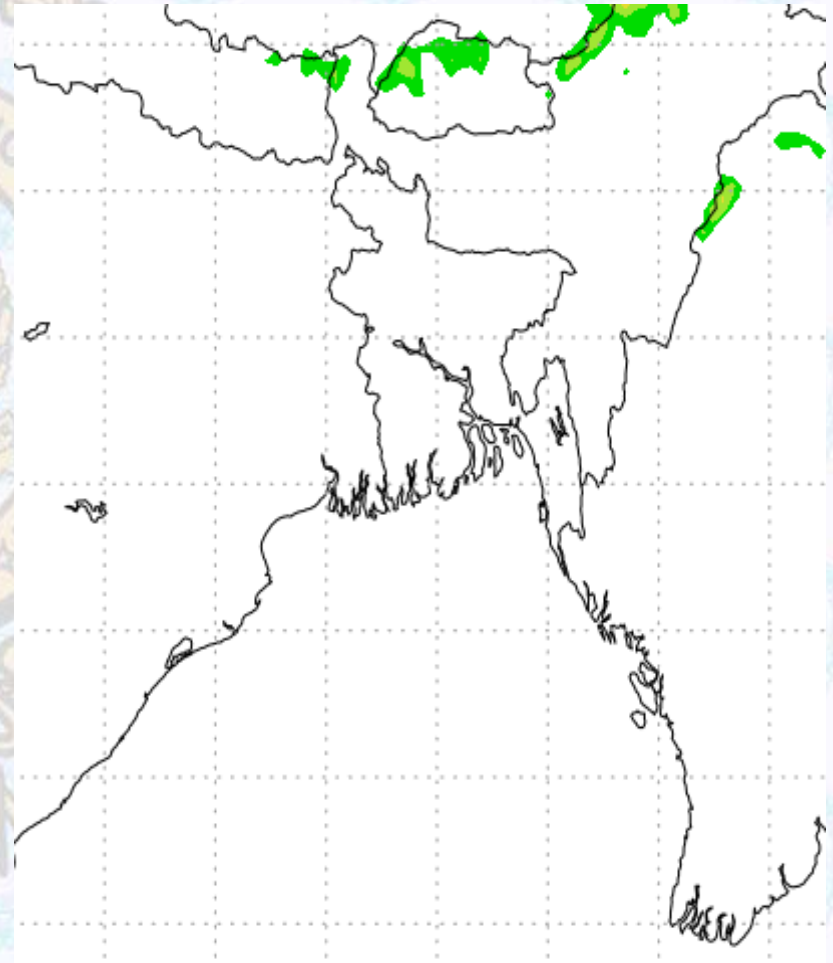
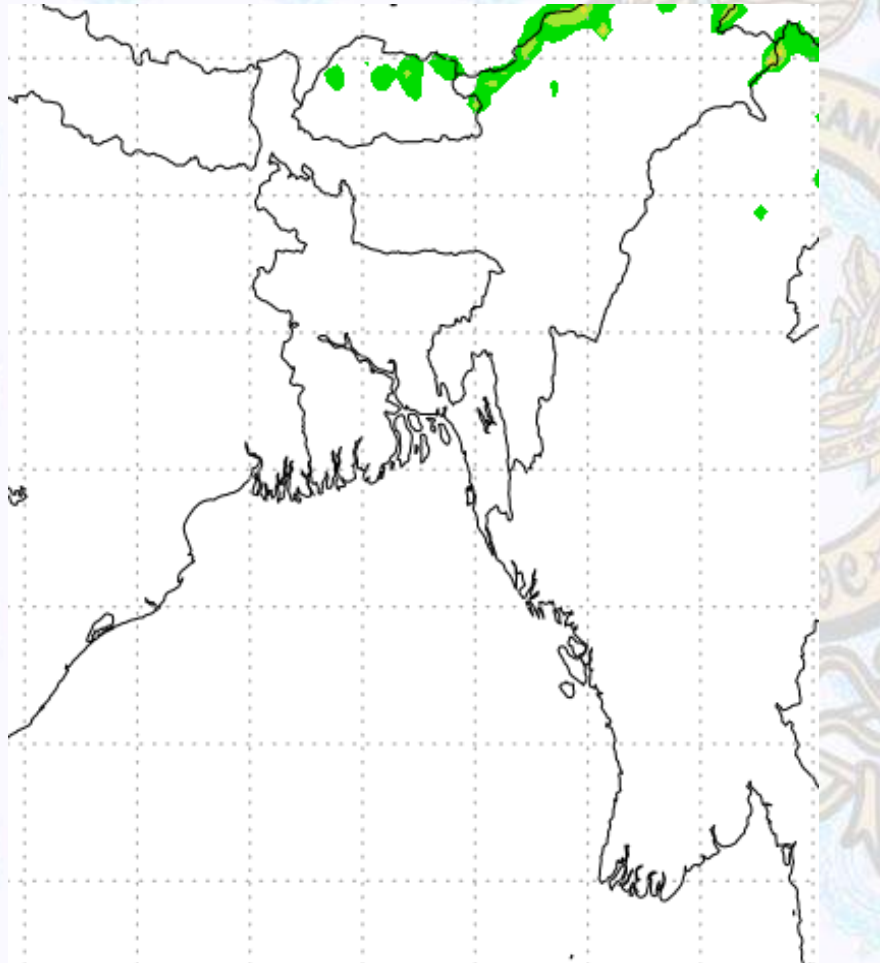
Ref (Slide 12-18): <http://www.weatheronline.co.uk/marine/weather?LEVEL>



Precipitation

Rain(mm) 25 & 26 Feb 21

Rain(mm) 26 & 27 Feb 21



Precipitation Scale (mm):





Tidal Information

KHAL NO. 10

COX'S BAZAR

HIRAN POINT

25 Feb 2021	Time	Height		Time	Height		Time	Height
	0623	0.81		0352	0.63		0357	0.71
	1209	3.51		0933	2.53		0951	2.31
	1821	0.83		1600	0.54		1550	0.59
	-	-		2156	3.05		2204	2.69
26 Feb 2021	Time	Height		Time	Height		Time	Height
	0010	4.06		0434	0.44		0433	0.49
	0702	0.63		1011	2.81		1027	2.51
	1243	3.77		1643	0.36		1632	0.41
	1904	0.65		2233	3.28		2239	2.83
27 Feb 2021	Time	Height		Time	Height		Time	Height
	0046	4.25		0512	0.27		0507	0.29
	0738	0.48		1047	3.04		1102	2.67
	1315	3.98		1722	0.22		1711	0.27
	1943	0.51		2309	3.43		2314	2.91