



WEATHER FORECAST FOR BN

12 FEB - 15 FEB 2021





WEATHER FORECAST – DHAKA

12.02.2021

| Hourly | 2 PM | 4 PM | 8 PM | 11 PM |
|-------------------|------------------------|------------|----------|------------|
| Temp. / Dew Point | 27 / 15 | 27 / 15 | 23 / 16 | 20 / 15 |
| Wind | 8 km/h WNW | 8 km/h WNW | 3 km/h W | 4 km/h WNW |
| Humidity | 49% | 46% | 65% | 73% |
| Chance of Precip | 1% | 1% | 2% | 3% |
| Cloud Cover | 32% | 29% | 18% | 24% |
| Conditions | Sunny | Sunny | Clear | Clear |
| Sunrise Sunset | 06: 33 AM 17: 52 PM | | | |

Conditions

Pressure : 1015 hpa

Visibility : 1.10 km

Ref: <https://www.wunderground.com/weather/bd/dhaka>



WEATHER FORECAST – CHATTOGRAM

12.02.2021

| Hourly | 2 PM | 4 PM | 8 PM | 11 PM |
|-------------------|-------------|-----------|-----------|-----------|
| Temp. / Dew Point | 27 / 15 | 26 / 15 | 22 / 17 | 20 / 17 |
| Wind | 12 km/h WNW | 12 km/h W | 10 km/h W | 6 km/h NW |
| Humidity | 50% | 51% | 72% | 82% |
| Chance of Precip. | 1% | 1% | 2% | 4% |
| Cloud Cover | 28% | 23% | 17% | 27% |
| Conditions | Sunny | Sunny | Clear | Clear |
| Sunrise | 06: 26 AM | | | |
| Sunset | 17: 48 PM | | | |

Conditions

Pressure : 1015 hpa

Visibility : 5.2 Km

Ref: <https://www.wunderground.com/weather/bd/chittagong>



WEATHER FORECAST – KHULNA

12.02.2021

| Hourly | 2 PM | 4 PM | 8 PM | 11 PM |
|-------------------|-------------------------|-------------------------|------------|----------|
| Temp. / Dew Point | 28 / 14 | 28 / 14 | 22 / 16 | 20 / 17 |
| Wind | 9 km/h NNW | 7 km/h NNW | 4 km/h SSW | 2 m/h SW |
| Humidity | 42% | 42% | 67% | 87% |
| Chance of Precip. | 1% | 1% | 2% | 5% |
| Cloud Cover | 35% | 29% | 30% | 17% |
| Conditions | Sunny/ Partly Cloudy | Sunny/ Partly Cloudy | Clear | Clear |
| Sunrise Sunset | 06: 36 AM 17: 56 PM | | | |

Conditions

Pressure : 1015 hpa

Visibility : 5.4 Km

Ref: <https://www.wunderground.com/weather/bd/khulna>



GENERAL WEATHER FORECAST – DHAKA

| Description | 13 Feb 2021 | 14 Feb 2021 | 15 Feb 2021 |
|--------------------------|---------------------|---------------------|----------------------|
| Temperature (C) | 28 °C/ 16 °C | 28 °C/ 16 °C | 28 °C/ 17 °C |
| Summary | Sunny | Sunny | Sunny |
| Sun Rise/Set | 6h33m12s/17h52m42s | 6h32m36s/17h53m16s | 6h31m48s/17h53m54s |
| Day Length | 11h19m30s | 11h20m42s | 11h22m06s |
| Moon Rise/ Set | 7:42AM 7:21PM | 8:16AM 8:14PM | 8:50AM 9:06PM |
| Moon Phase/ illu | Waxing Crescent, 4% | Waxing Crescent, 9% | Waxing Crescent, 16% |
| Nautical Twilight | 05:43,18:42 | 05:42,18:43 | 05:42,18:43 |
| Civil Twilight | 06:09,18:15 | 06:09,18:16 | 06:08,18:16 |
| Humidity | D : 60% N : 75% | D : 61% N : 76% | D : 64% N : 77% |
| Barometer (mb) | 1013 | 1013 | 1012 |
| Visibility | Hazy/ Moderate | Hazy/ Moderate | Hazy/ Moderate |
| Precip Chance | 4% | 4% | 5% |
| Wind (mph) | 8 Km/h WNW | 9 Km/h W | 8 Km/h WSW |

Ref: <https://weather.com/weather/5day//BGXX0003:1:BG>



GENERAL WEATHER FORECAST– CHATTOGRAM

| Description | 13 Feb 2021 | 14 Feb 2021 | 15 Feb 2021 |
|-------------------------|---------------------|---------------------|----------------------|
| Temperature (C) | 27 °C/ 15 °C | 26 °C/ 16 °C | 27 °C/ 17 °C |
| Summary | Sunny | Sunny | Sunny |
| Sun Rise/Set | 6h25m48s/ 17h48m42s | 6h25m12s/ 17h49m12s | 6h24m30s/ 17h49m48s |
| Day Length | 11h22m54s | 11h24m00s | 11h25m18s |
| Moon Rise/ Set | 7:34AM 7:17PM | 8:10AM 8:09PM | 8:43AM 9:00PM |
| Moon Phase/ illu | Waxing Crescent, 4% | Waxing Crescent, 9% | Waxing Crescent, 16% |
| NauticalTwilight | 05:36, 18:37 | 05:35, 18:38 | 05:35, 18:38 |
| Civil Twilight | 06:02, 18:11 | 06:02, 18:11 | 06:01, 18:12 |
| Humidity | D : 62% N : 79% | D : 66% N : 91% | D : 69% N : 96% |
| Barometer (mb) | 1013 | 1013 | 1013 |
| Visibility | Hazy/ Moderate | Hazy/ Moderate | Hazy/ Moderate |
| Precip Chance | 4% | 4% | 5% |
| Wind (mph) | 12 Km/h NW | 12 Km/h WNW | 11 Km/h WNW |

Ref: <https://weather.com/weather/5day//BGXX0002:1:BG>



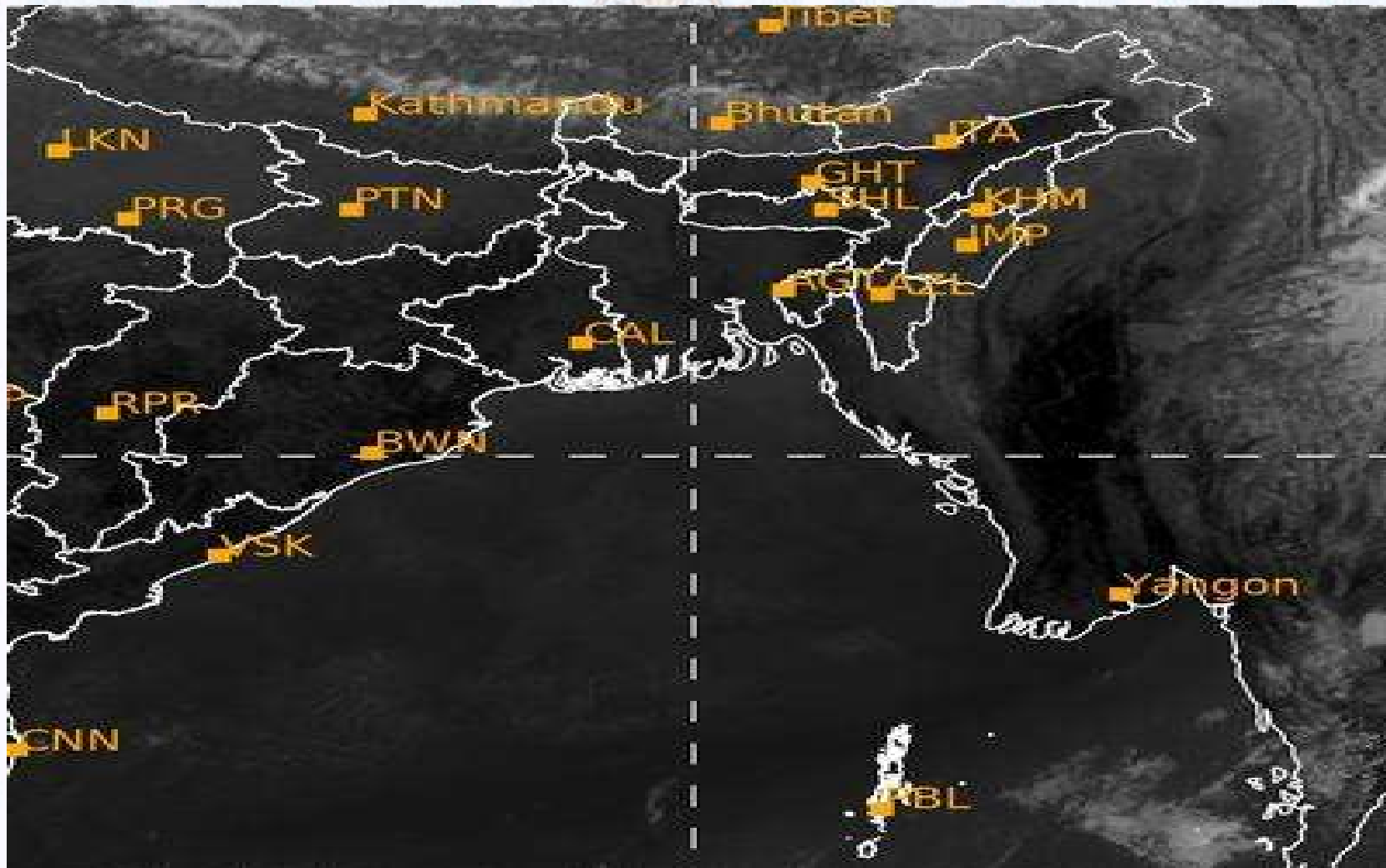
GENERAL WEATHER FORECAST – KHULNA

| Description | 13 Feb 2021 | 14 Feb 2021 | 15 Feb 2021 |
|--------------------------|---------------------|---------------------|----------------------|
| Temperature(C) | 29°C/ 17°C | 29°C/ 18°C | 30°C/ 18°C |
| Summary | Sunny | Sunny | Sunny |
| Sun Rise/Set | 6h35m30s/ 17h57m18s | 6h34m54s/ 17h57m48s | 6h34m06s/ 17h58m24s |
| Day Length | 10h21m48s | 10h22m54s | 10h24m18s |
| Moon Rise/Set | 7:44AM 7:26PM | 8:19AM 8:18PM | 8:54AM 9:11PM |
| Moon Phase/illu | Waxing Crescent, 4% | Waxing Crescent, 4% | Waxing Crescent, 16% |
| Nautical Twilight | 05:45, 18:46 | 05:44, 18:47 | 05:44, 18:47 |
| Civil Twilight | 06:12, 18:20 | 06:11, 18:20 | 06:11, 18:21 |
| Humidity | D : 62% N : 86% | D : 63% N : 90% | D : 64% N : 89% |
| Barometer (mb) | 1013 | 1013 | 1012 |
| Visibility | Hazy/ Moderate | Hazy/ Moderate | Hazy/ Moderate |
| Precip Chance | 6% | 7% | 8% |
| Wind (mph) | 6 km/h WNW | 7 km/h W | 9 km/h W |

Ref: <https://weather.com/weather/5day//BGXX0005:1:BG>



SATELLITE VIEW OF BAY OF BENGAL

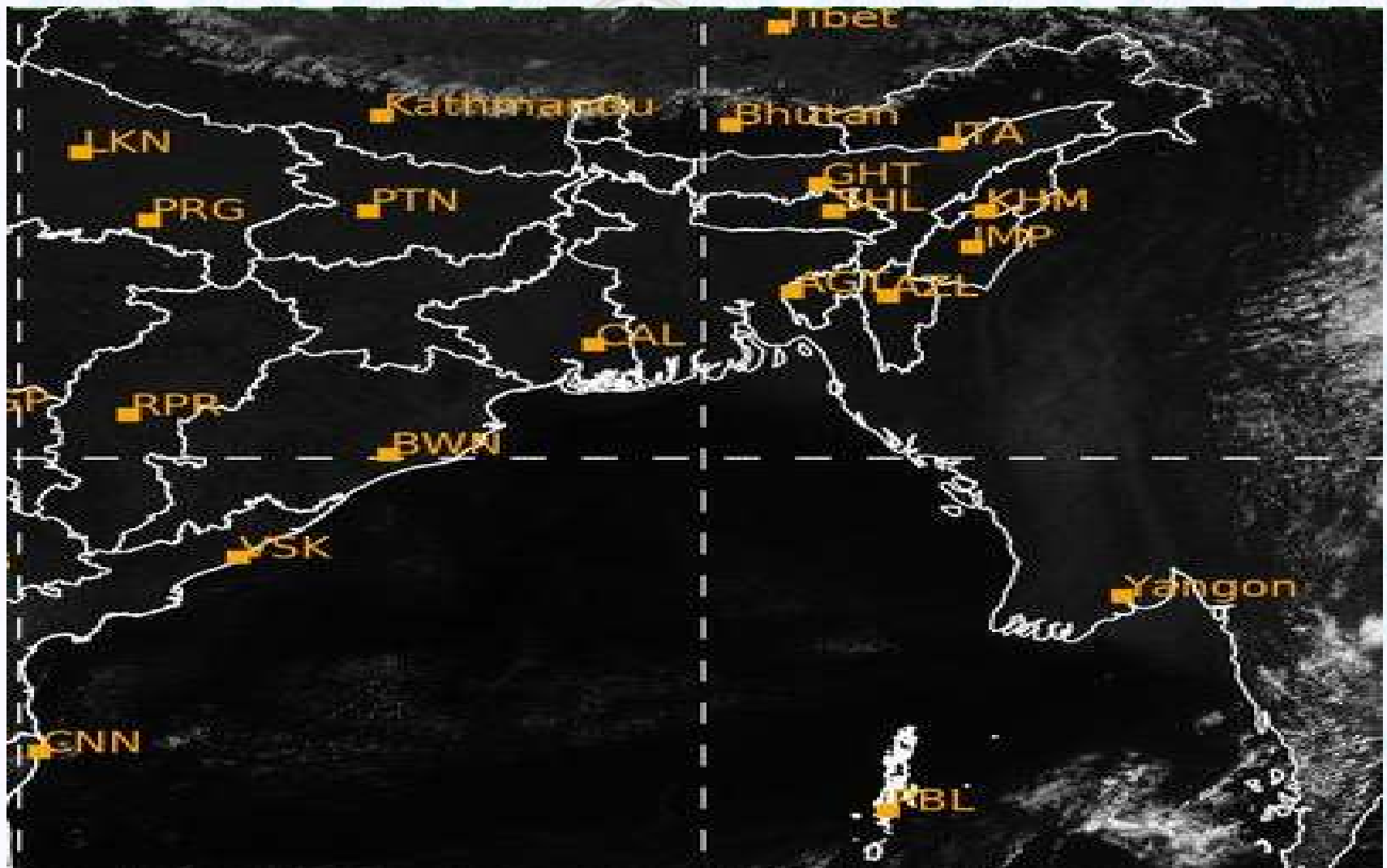


12/02/2021, 11:00 UTC MATSAT-IR

Ref: <http://satellite.imd.gov.in/insat.htm>



SATELLITE VIEW OF BAY OF BENGAL



12/02/2021, 11:00 MATSAT-VIS

Ref: <http://satellite.imd.gov.in/insat.htm>



Fleet Forecast Sea Area C-90 (Valid for 12 Hrs Commencing 1000 UTC of 12.02.2021)

| | | |
|-------------------|-----------------------------------|--|
| Part One | NO STORM WARNING. | |
| Part Two | SEASONAL LOW LIES OVER SOUTH BAY. | |
| Part Three | Weather | TEMPORARY PARTLY CLOUDY OVER AREA C-90. |
| | Wind | NORTH/NORTH-EASTERLY 08-12 KTS. |
| | Visibility | 03-05 KMS, REDUCING TO 1000 M OR LESS IN MIST/FOG. |
| | Outlook | FOR SUBSEQUENT 12 HOURS: LITTLE CHANGE. |
| | MSL Pressure | AT = 12,0000 UTC. CHATTOGRAM =1015 HPA |



Inland River Port Warning (VALID TILL 06 PM OF 12.02.2020)

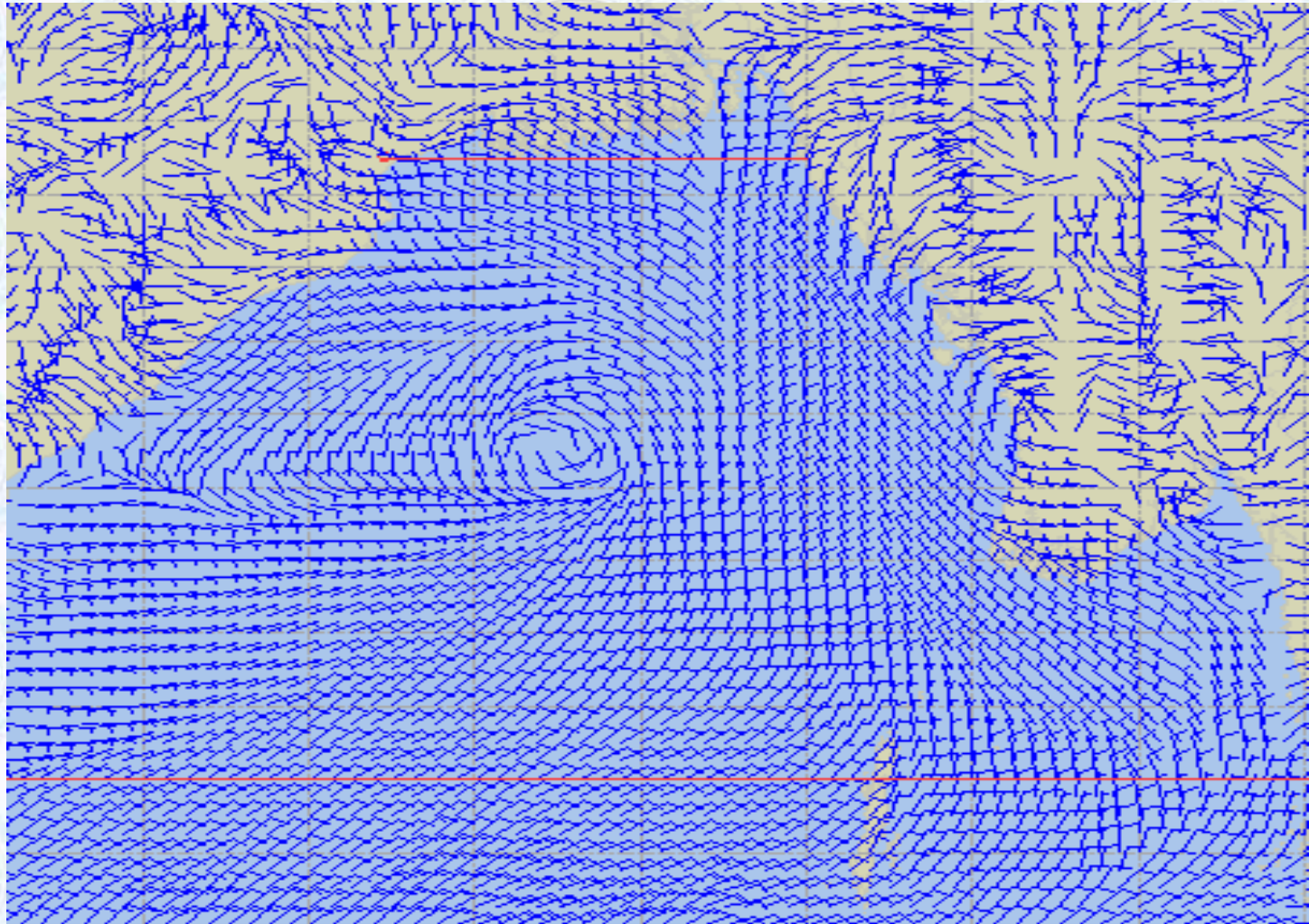
THERE IS NO INLAND RIVERPORT WARNING AND NO SIGNAL IS TO BE HOISTED.



Ref: <http://www.bmd.gov.bd/?/home>



Surface Wind Forecast- 13 Feb - 2021



Legend:



**Calm
Winds**



5 Knots



10 Knots



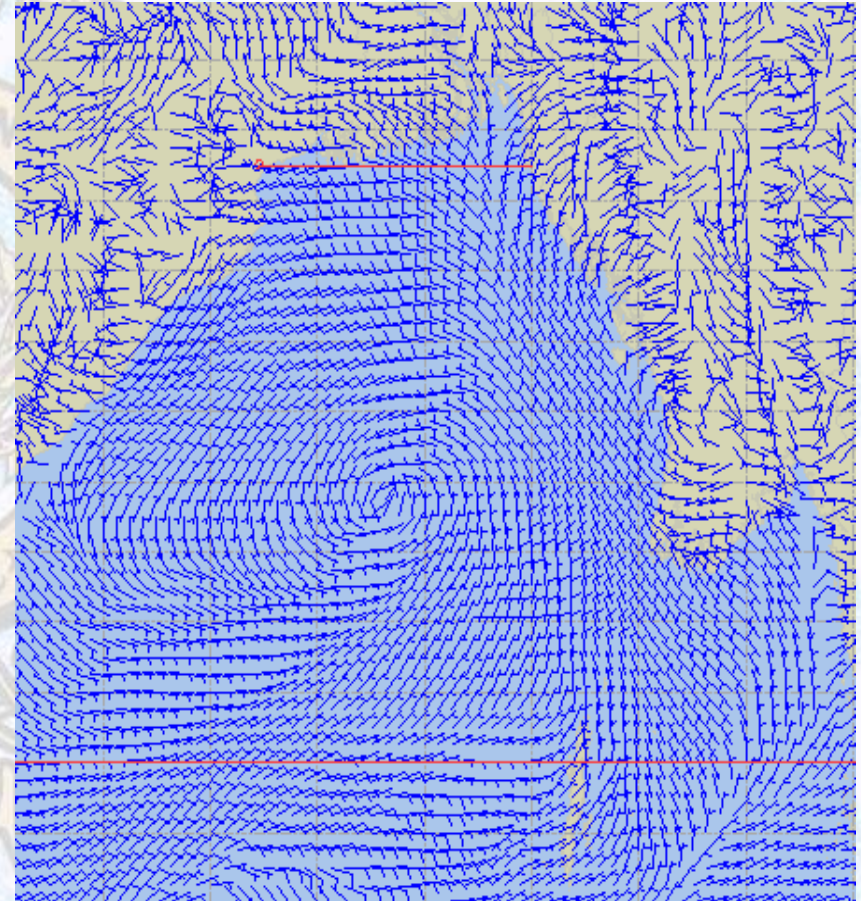
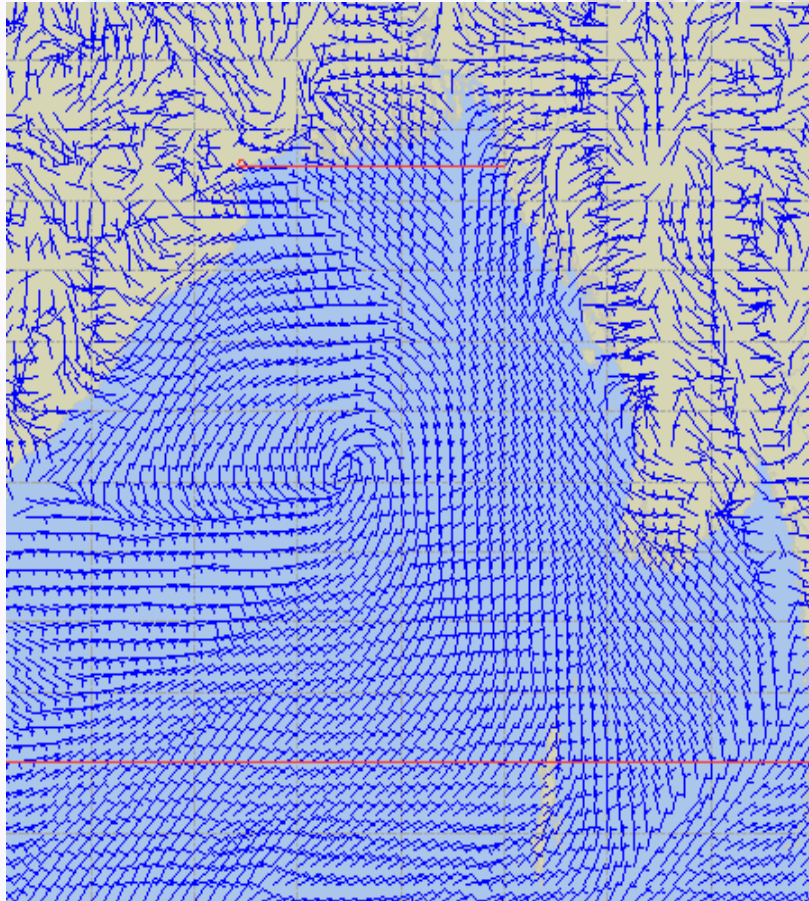
60 Knots



Surface Wind Forecast – 14 & 15 Feb - 2021

14 Feb 21 Sunday

15 Feb 21 Monday



Legend:



Calm
Winds



5 Knots



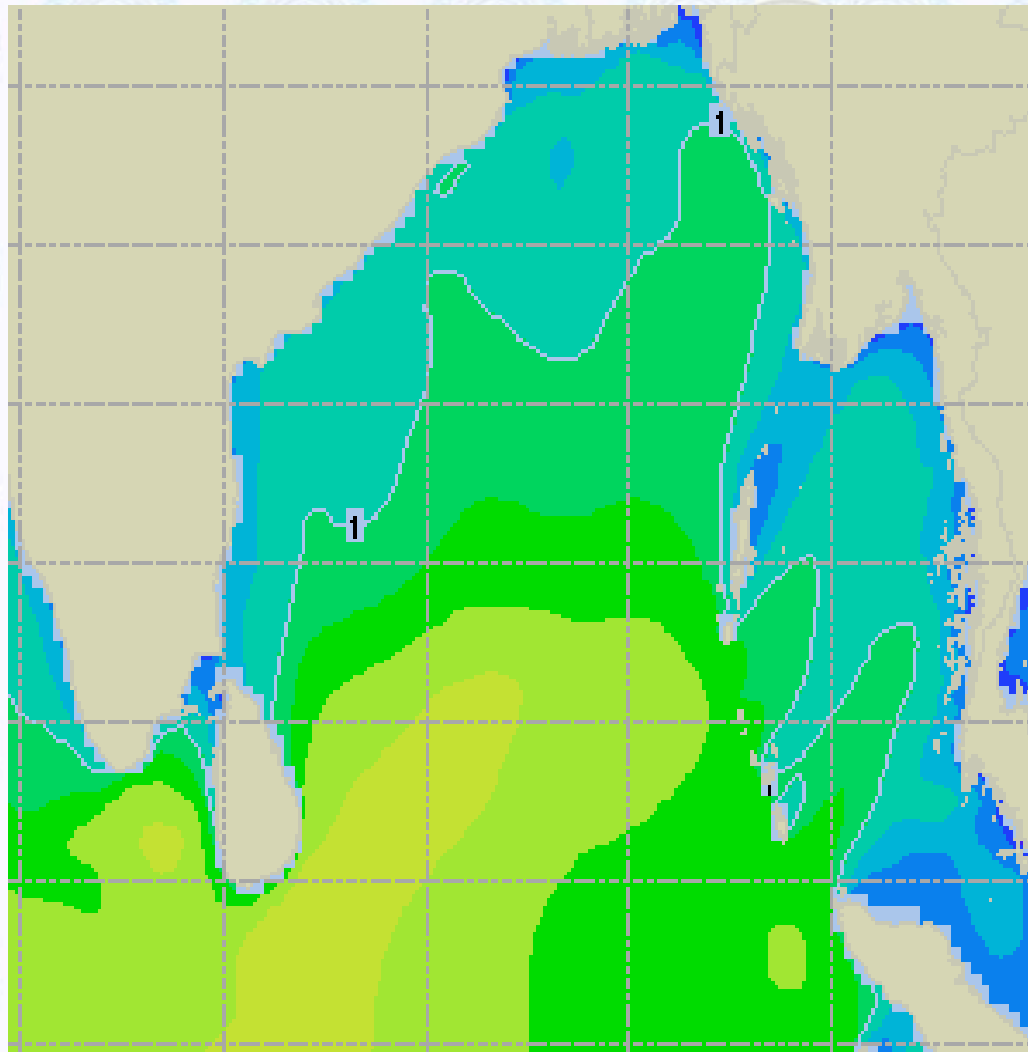
10 Knots



60 Knots



Sea State Forecast – 13 Feb - 2021



| Sea State | Ht (m) |
|-----------|----------|
| 0 | 0-0.1 |
| 1 | 0-0.1 |
| 2 | 0.1-0.5 |
| 3 | 0.5-1.25 |
| 4 | 1.25-2.5 |
| 5 | 2.5-4.0 |
| 6 | 4-6 |
| 7 | 6-9 |
| 8 | 9-14 |
| 9 | Over 14 |

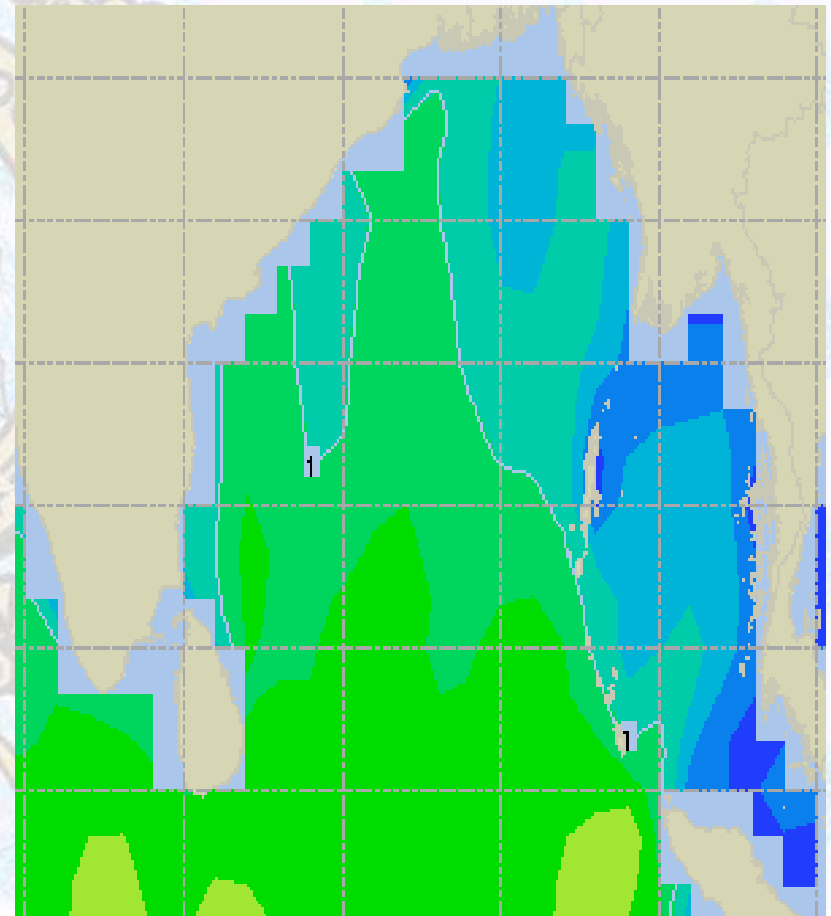
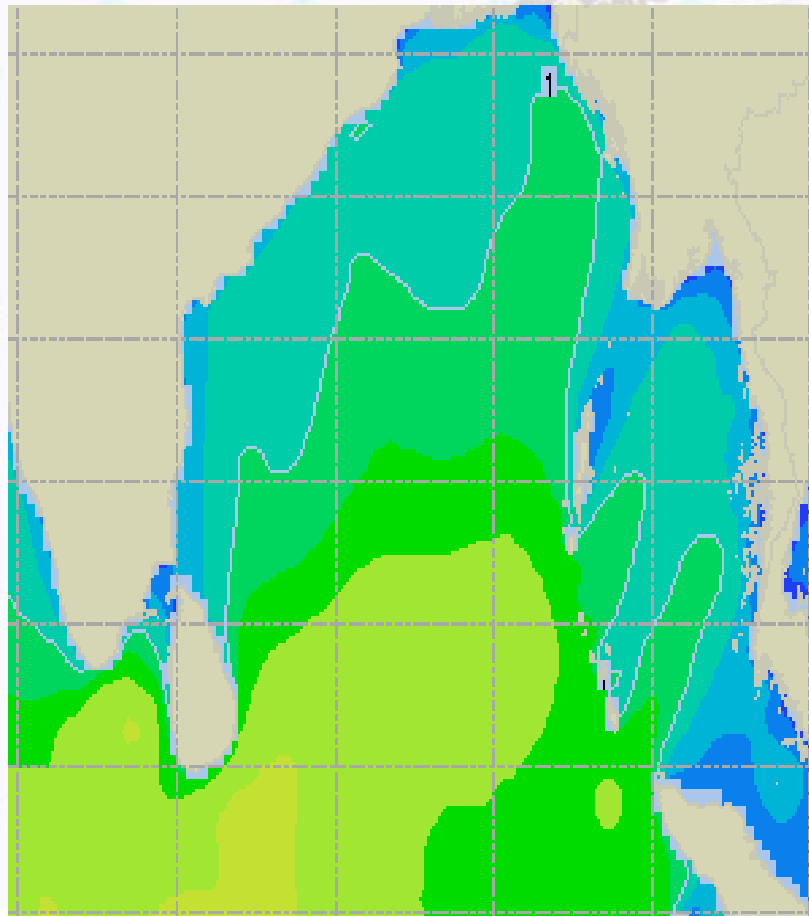




Sea State Forecast – 14 & 15 Feb - 2021

14 Feb 21 Sunday

15 Feb 21 Monday

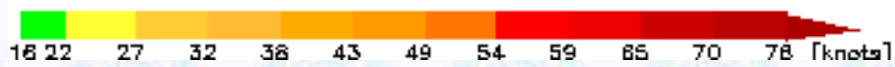
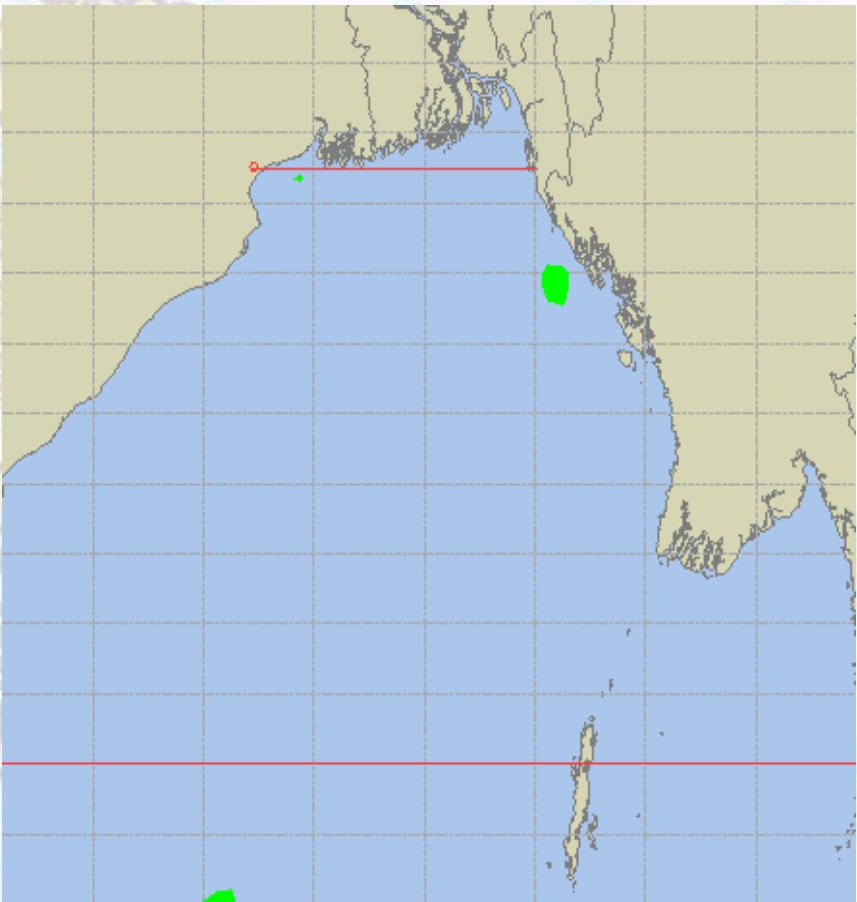
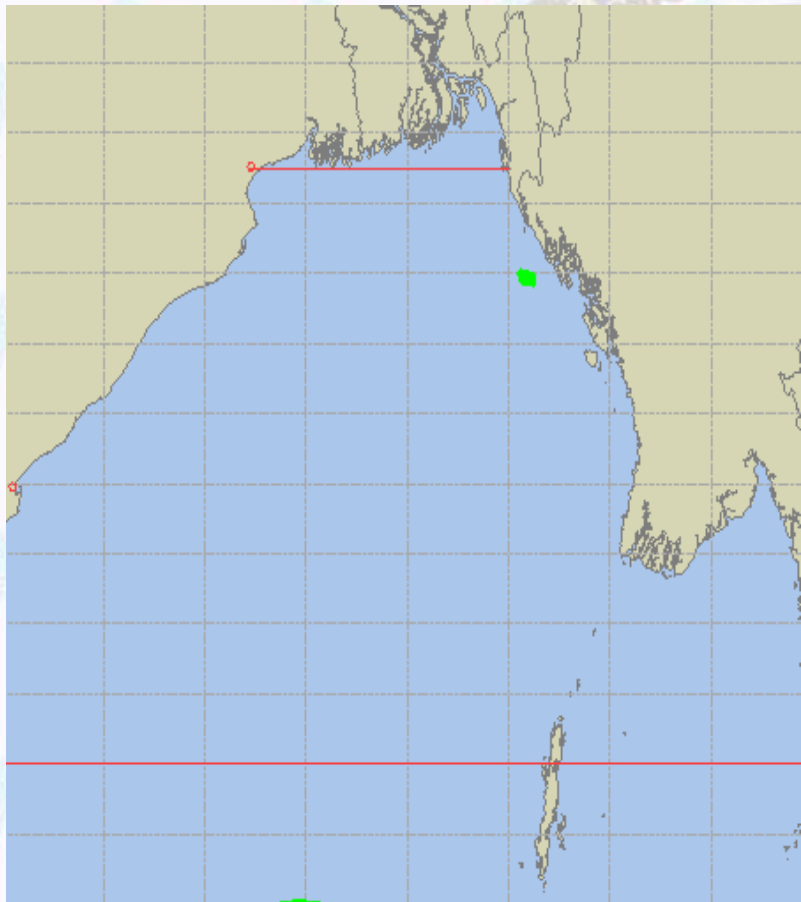




Peak Gusting Possibilities– 13 & 14 Feb 2021

13 Feb 21 Saturday

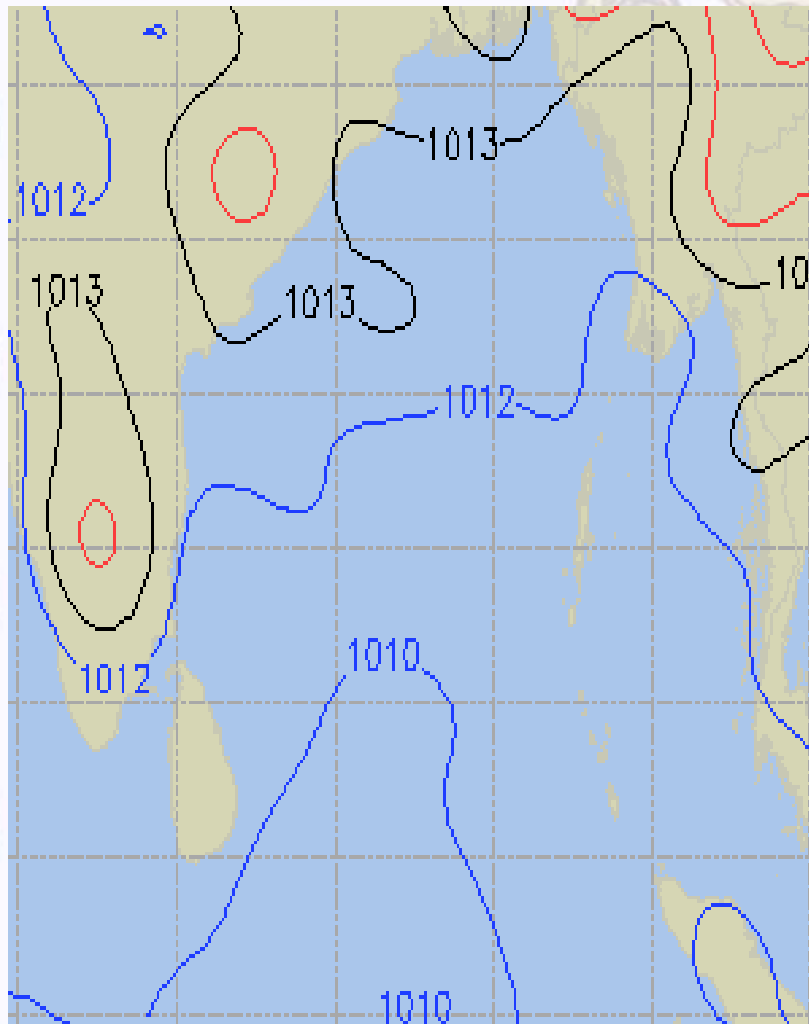
14 Feb 21 Sunday



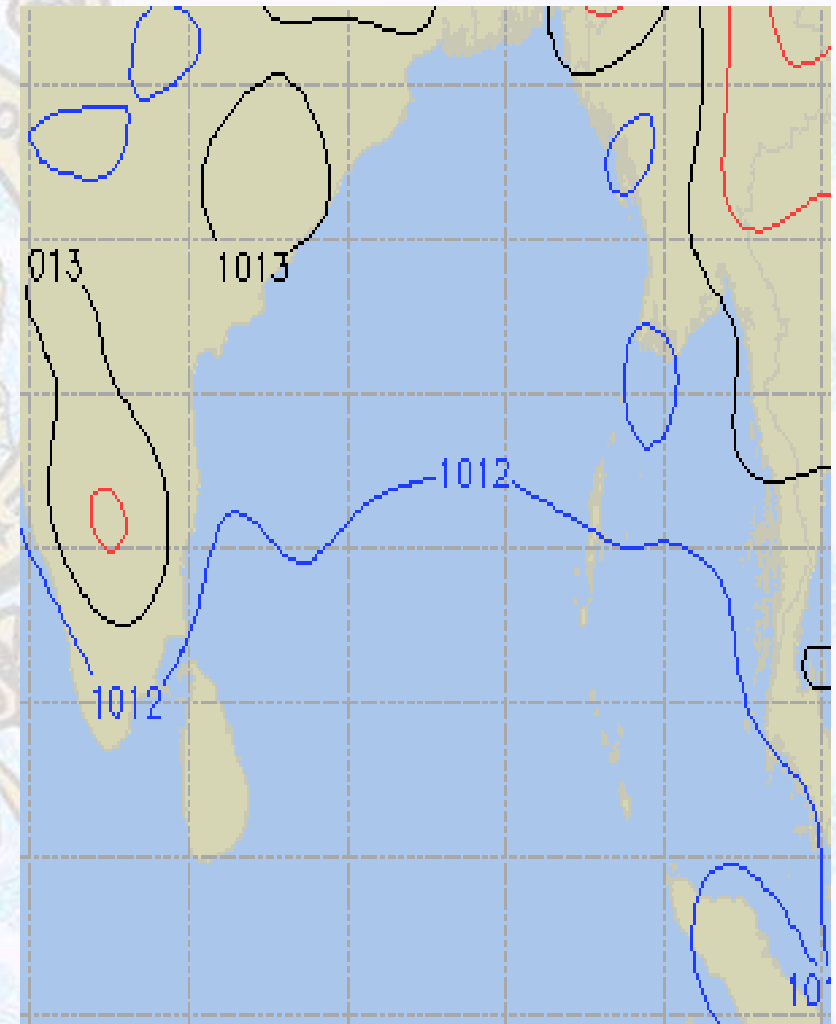


Surface Pressure forecast – 13 & 14 Feb 2021

13 Feb 21 Saturday



14 Feb 21 Sunday

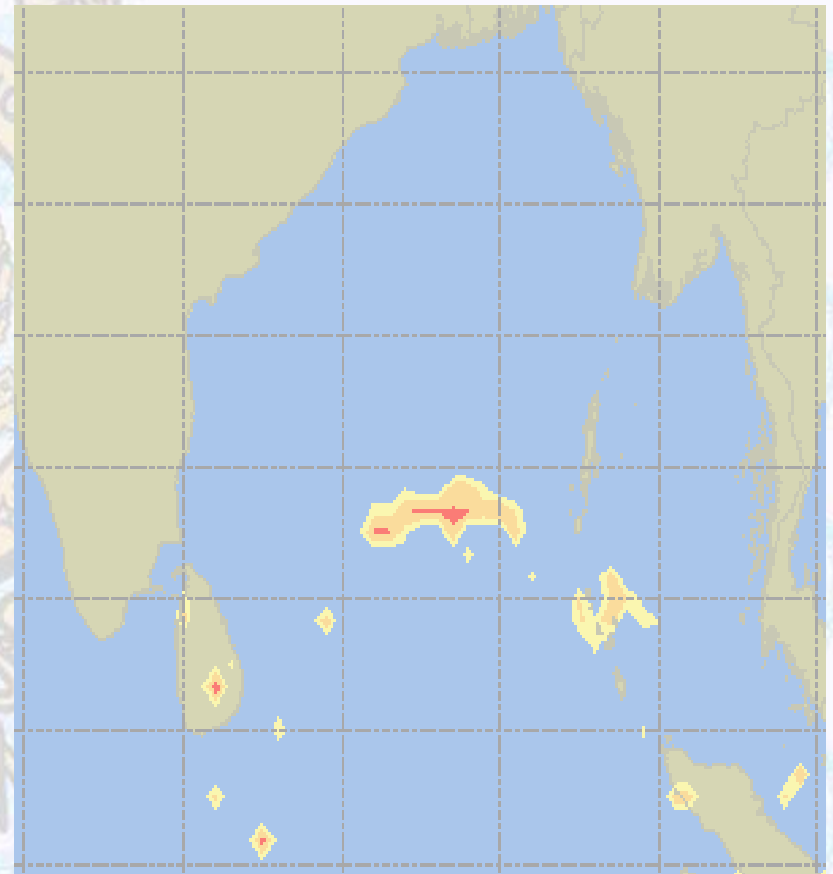
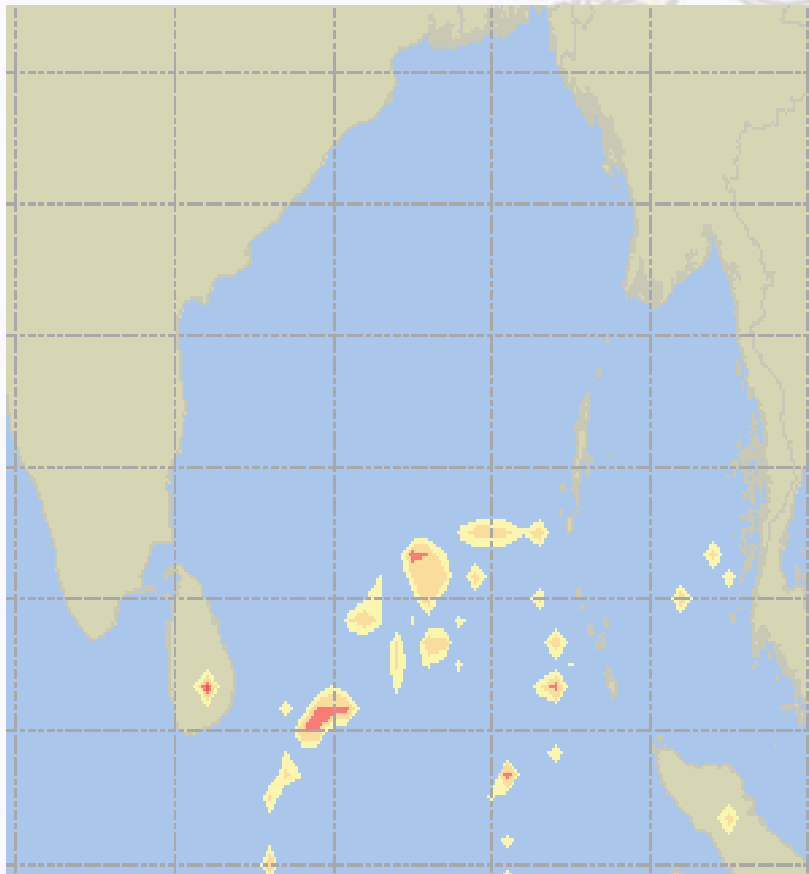




Visibility at Sea Forecast – 13 & 14 Feb 2021

13 Feb 21 Saturday

14 Feb 21 Sunday



Visibility Scale:



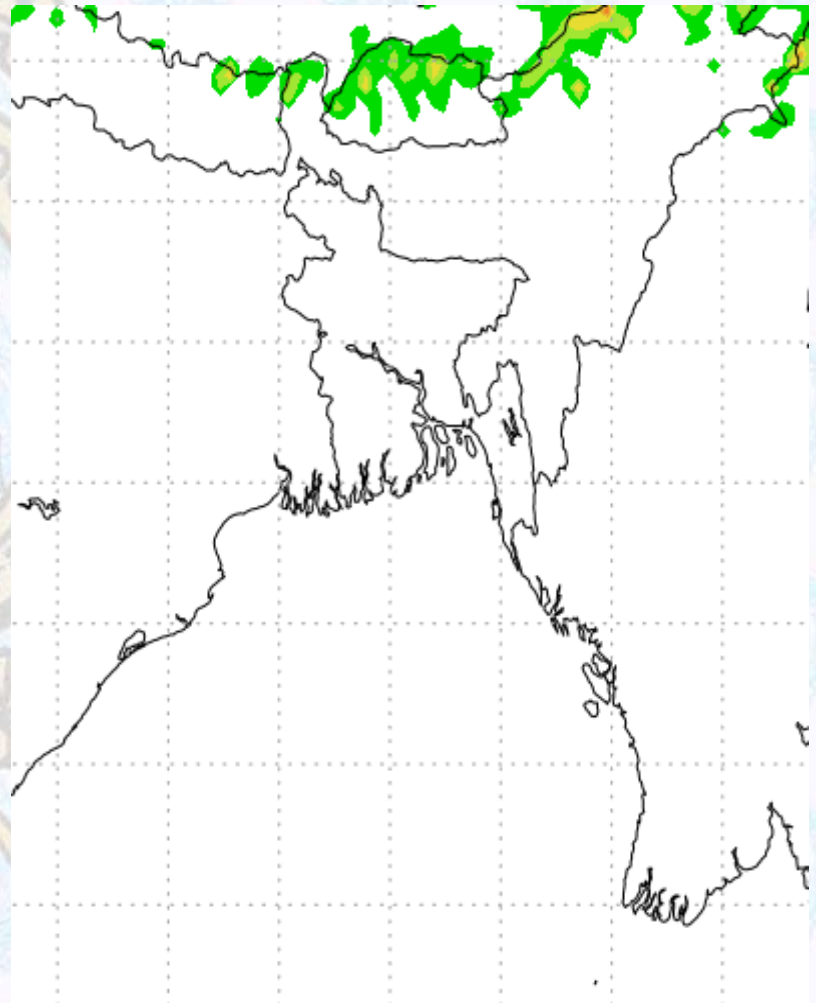
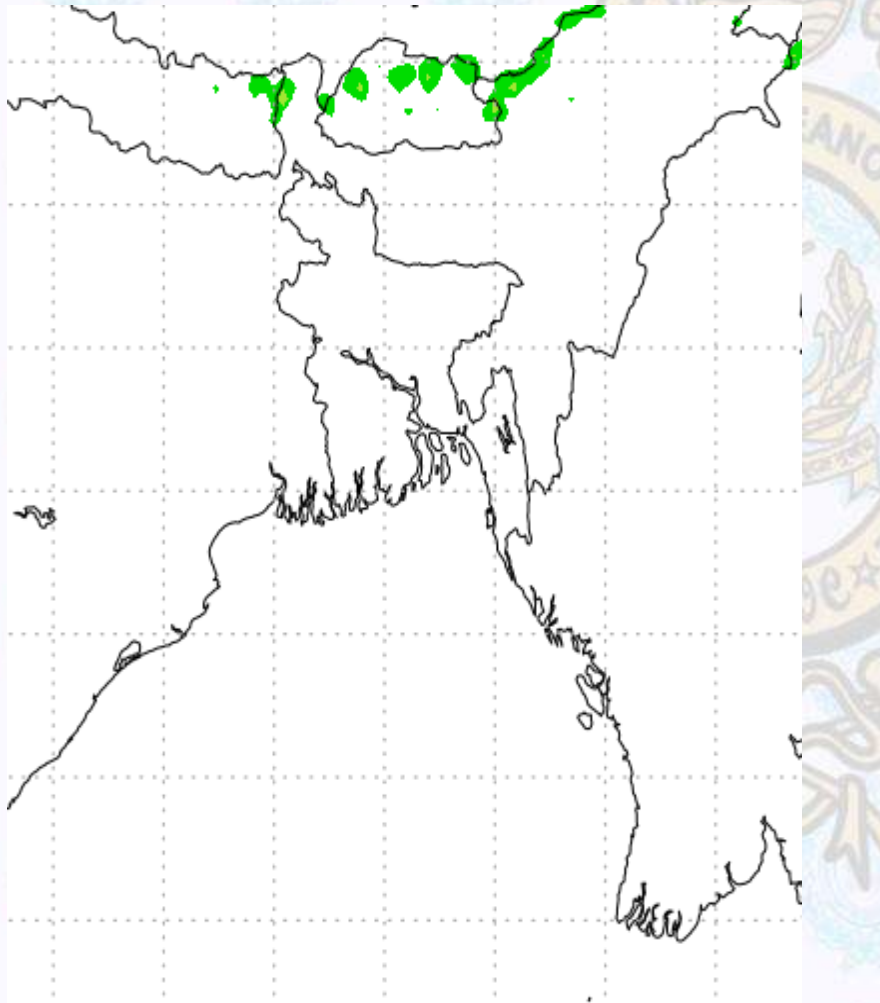
Ref (Slide 12-18): <http://www.weatheronline.co.uk/marine/weather?LEVEL>



Precipitation

Rain(mm) 13 & 14 Feb 21

Rain(mm) 14 & 15 Feb 21



Precipitation Scale (mm):





Tidal Information

KHAL NO. 10

COX'S BAZAR

HIRAN POINT

| | | | | | | | | |
|--------------------|-------------|---------------|--|-------------|---------------|--|-------------|---------------|
| 13 Feb 2021 | Time | Height | | Time | Height | | Time | Height |
| | 0146 | 4.33 | | 0609 | 0.21 | | 0605 | 0.32 |
| | 0833 | 0.31 | | 1145 | 2.98 | | 1158 | 2.64 |
| | 1413 | 4.01 | | 1817 | 0.20 | | 1806 | 0.39 |
| | 2035 | 0.43 | | - | - | | - | - |
| 14 Feb 2021 | Time | Height | | Time | Height | | Time | Height |
| | 0215 | 4.37 | | 0004 | 3.37 | | 0008 | 2.85 |
| | 0902 | 0.28 | | 0642 | 0.20 | | 0633 | 0.33 |
| | 1442 | 4.08 | | 1221 | 2.99 | | 1228 | 2.64 |
| | 2105 | 0.44 | | 1850 | 0.23 | | 1836 | 0.44 |
| 15 Feb 2021 | Time | Height | | Time | Height | | Time | Height |
| | 0245 | 4.35 | | 0038 | 3.29 | | 0035 | 2.78 |
| | 0930 | 0.28 | | 0712 | 0.24 | | 0700 | 0.37 |
| | 1512 | 4.09 | | 1255 | 2.92 | | 1256 | 2.62 |
| | 2135 | 0.48 | | 1920 | 0.30 | | 1905 | 0.53 |