



# WEATHER FORECAST FOR BN

***11 FEB - 14 FEB 2021***



# WEATHER FORECAST – DHAKA

## 11.02.2021

Hourly	2 PM	4 PM	8 PM	11 PM
Temp. / Dew Point	27 / 16	27 / 15	23 / 16	21 / 16
Wind	5 km/h SW	6 km/h WSW	2 km/h ESE	2 km/h WNW
Humidity	48%	47%	64%	74%
Chance of Precip	1%	1%	2%	4%
Cloud Cover	3%	7%	14%	4%
Conditions	Sunny	Sunny	Clear	Clear
Sunrise Sunset	06: 35 AM 17: 50 PM			

### Conditions

Pressure : 1015 hpa

Visibility : 1.77 km

Ref: <https://www.wunderground.com/weather/bd/dhaka>



# WEATHER FORECAST – CHATTOGRAM

## 11.02.2021

Hourly	2 PM	4 PM	8 PM	11 PM
Temp. / Dew Point	26 / 15	26 / 15	22 / 16	20 / 16
Wind	10 km/h WNW	11 km/h W	8 km/h WNW	7 km/h NNW
Humidity	59%	51%	71%	78%
Chance of Precip.	1%	1%	1%	3%
Cloud Cover	5%	1%	12%	17%
Conditions	Sunny	Sunny	Clear	Clear
Sunrise	06: 27 AM			
Sunset	17: 47 PM			

### Conditions

Pressure : 1014 hpa

Visibility : 4.7 Km

Ref: <https://www.wunderground.com/weather/bd/chittagong>



# WEATHER FORECAST – KHULNA

## 11.02.2021

Hourly	2 PM	4 PM	8 PM	11 PM
Temp. / Dew Point	28 / 13	28 / 13	22 / 15	19 / 16
Wind	4 km/h WSW	5 km/h SW	5 km/h S	3 m/h SW
Humidity	41%	41%	65%	81%
Chance of Precip.	1%	1%	1%	4%
Cloud Cover	4%	5%	6%	38%
Conditions	Sunny	Sunny	Clear	Clear
Sunrise Sunset	06: 37 AM 17: 55 PM			

### Conditions

Pressure : 1015 hpa

Visibility : 5.3 Km

Ref: <https://www.wunderground.com/weather/bd/khulna>



# GENERAL WEATHER FORECAST – DHAKA

Description	12 Feb 2021	13 Feb 2021	14 Feb 2021
<b>Temperature (C)</b>	28 °C/ 16 °C	28 °C/ 16 °C	28 °C/ 17 °C
<b>Summary</b>	Sunny	Sunny	Sunny
<b>Sun Rise/Set</b>	6h33m48s/17h52m06s	6h33m12s/17h52m42s	6h32m36s/17h53m16s
<b>Day Length</b>	11h18m18s	11h19m30s	11h20m42s
<b>Moon Rise/ Set</b>	7:03AM 6:25PM	7:42AM 7:21PM	8:16AM 8:14PM
<b>Moon Phase/ illu</b>	New Moon, 1%	Waxing Crescent, 4%	Waxing Crescent, 9%
<b>Nautical Twilight</b>	05:43,18:42	05:43,18:42	05:42,18:43
<b>Civil Twilight</b>	06:10,18:15	06:09,18:15	06:09,18:16
<b>Humidity</b>	D : 63% N : 77%	D : 62% N : 76%	D : 61% N : 77%
<b>Barometer (mb)</b>	1013	1013	1013
<b>Visibility</b>	Hazy/ Moderate	Hazy/ Moderate	Hazy/ Moderate
<b>Precip Chance</b>	5%	5%	5%
<b>Wind (mph)</b>	8 Km/h WNW	9 Km/h W	8 Km/h W

Ref: <https://weather.com/weather/5day//BGXX0003:1:BG>



# GENERAL WEATHER FORECAST– CHATTOGRAM

Description	12 Feb 2021	13 Feb 2021	14 Feb 2021
<b>Temperature (C)</b>	27 °C/ 15 °C	27 °C/ 15 °C	27 °C/ 16 °C
<b>Summary</b>	Sunny	Sunny	Sunny
<b>Sun Rise/Set</b>	6h26m18s/ 17h48m06s	6h25m48s/ 17h48m42s	6h25m12s/ 17h49m12s
<b>Day Length</b>	11h21m48s	11h22m54s	11h24m00s
<b>Moon Rise/ Set</b>	6:55AM 6:21PM	7:34AM 7:17PM	8:10AM 8:09PM
<b>Moon Phase/ illu</b>	New Moon, 1%	Waxing Crescent, 4%	Waxing Crescent, 9%
<b>NauticalTwilight</b>	05:36, 18:37	05:36, 18:37	05:35, 18:38
<b>Civil Twilight</b>	06:03, 18:10	06:02, 18:11	06:02, 18:11
<b>Humidity</b>	D : 62% N : 86%	D : 64% N : 80%	D : 65% N : 93%
<b>Barometer (mb)</b>	1013	1013	1013
<b>Visibility</b>	Hazy/ Moderate	Hazy/ Moderate	Hazy/ Moderate
<b>Precip Chance</b>	4%	4%	4%
<b>Wind (mph)</b>	13 Km/h NW	13 Km/h NW	12 Km/h WNW

Ref: <https://weather.com/weather/5day//BGXX0002:1:BG>



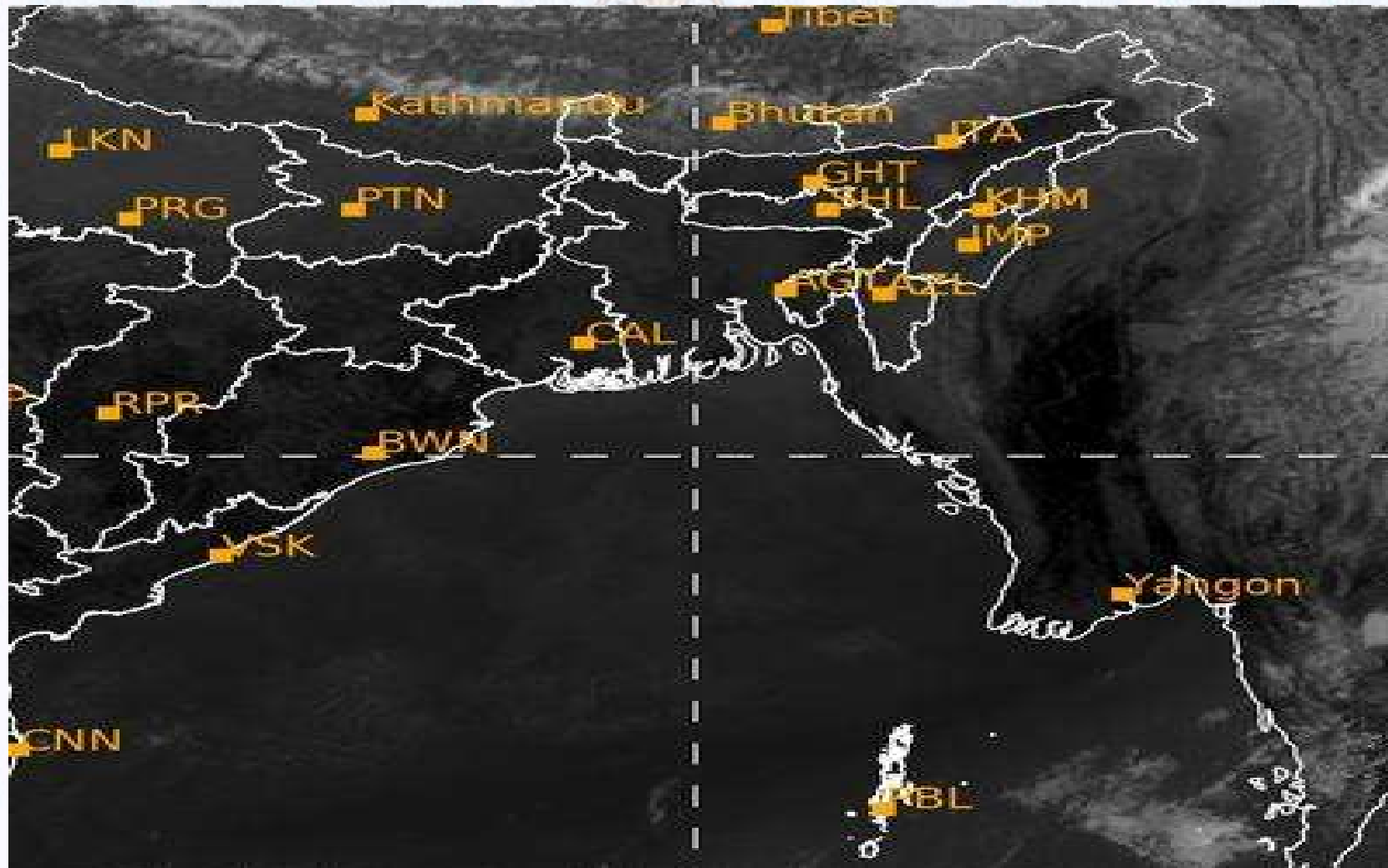
# GENERAL WEATHER FORECAST – KHULNA

Description	12 Feb 2021	13 Feb 2021	14 Feb 2021
<b>Temperature(C)</b>	29°C/ 16°C	29°C/ 17°C	29°C/ 18°C
<b>Summary</b>	Sunny	Sunny	Sunny
<b>Sun Rise/Set</b>	6h36m06s/ 17h56m42s	6h35m30s/ 17h57m18s	6h34m54s/ 17h57m48s
<b>Day Length</b>	10h20m36s	10h21m48s	10h22m54s
<b>Moon Rise/Set</b>	7:05AM 6:30PM	7:44AM 7:26PM	8:19AM 8:18PM
<b>Moon Phase/illu</b>	New Moon, 1%	Waxing Crescent, 4%	Waxing Crescent, 4%
<b>Nautical Twilight</b>	05:46, 18:46	05:45, 18:46	05:44, 18:47
<b>Civil Twilight</b>	06:12, 18:19	06:12, 18:20	06:11, 18:20
<b>Humidity</b>	D : 61% N : 85%	D : 62% N : 88%	D : 65% N : 90%
<b>Barometer (mb)</b>	1013	1013	1013
<b>Visibility</b>	Hazy/ Moderate	Hazy/ Moderate	Hazy/ Moderate
<b>Precip Chance</b>	7%	6%	7%
<b>Wind (mph)</b>	9 km/h NW	7 km/h W	8 km/h WSW

Ref: <https://weather.com/weather/5day//BGXX0005:1:BG>



# SATELLITE VIEW OF BAY OF BENGAL



11/02/2021, 11:00 UTC MATSAT-IR

Ref: <http://satellite.imd.gov.in/insat.htm>







# Fleet Forecast Sea Area C-90 (Valid for 12 Hrs Commencing 1000 UTC of 11.02.2021)

<b>Part One</b>	NO STORM WARNING.	
<b>Part Two</b>	SEASONAL LOW LIES OVER SOUTH BAY.	
<b>Part Three</b>	Weather	TEMPORARY PARTLY CLOUDY OVER AREA C-90.
	Wind	NW/NLY, 08-12 KTS.
	Visibility	03-05 KMS, REDUCING TO 1000 M OR LESS IN MIST/FOG.
	Outlook	FOR SUBSEQUENT 12 HOURS: LITTLE CHANGE.
	MSL Pressure	AT = 11,0000 UTC. CHATTOGRAM =1014 HPA



# Inland River Port Warning (VALID TILL 06 PM OF 11.02.2020)

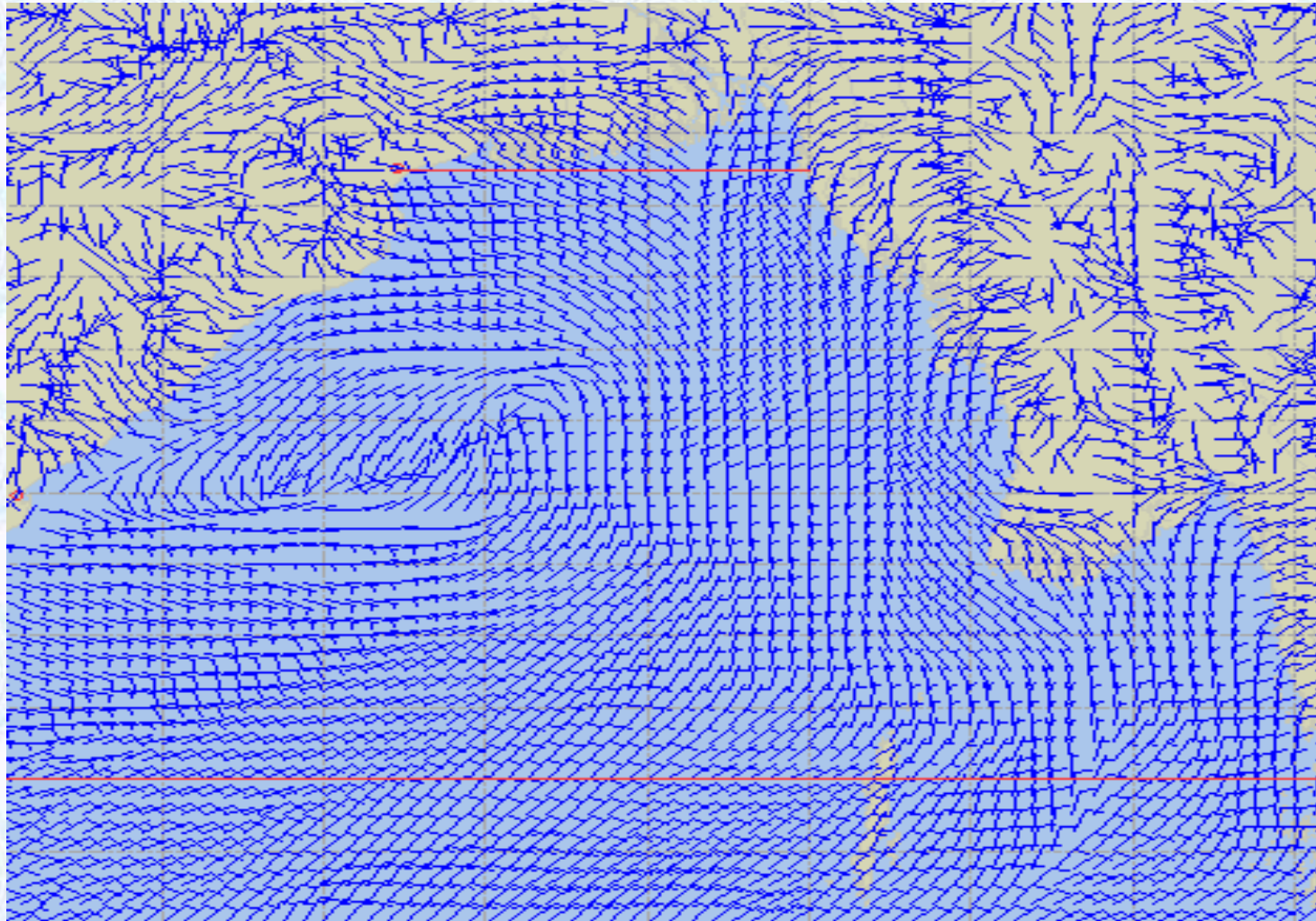
THERE IS NO INLAND RIVERPORT WARNING AND NO SIGNAL IS TO BE HOISTED.



Ref: <http://www.bmd.gov.bd/?/home>



# Surface Wind Forecast- 12 Feb - 2021



**Legend:**



**Calm  
Winds**



**5 Knots**



**10 Knots**



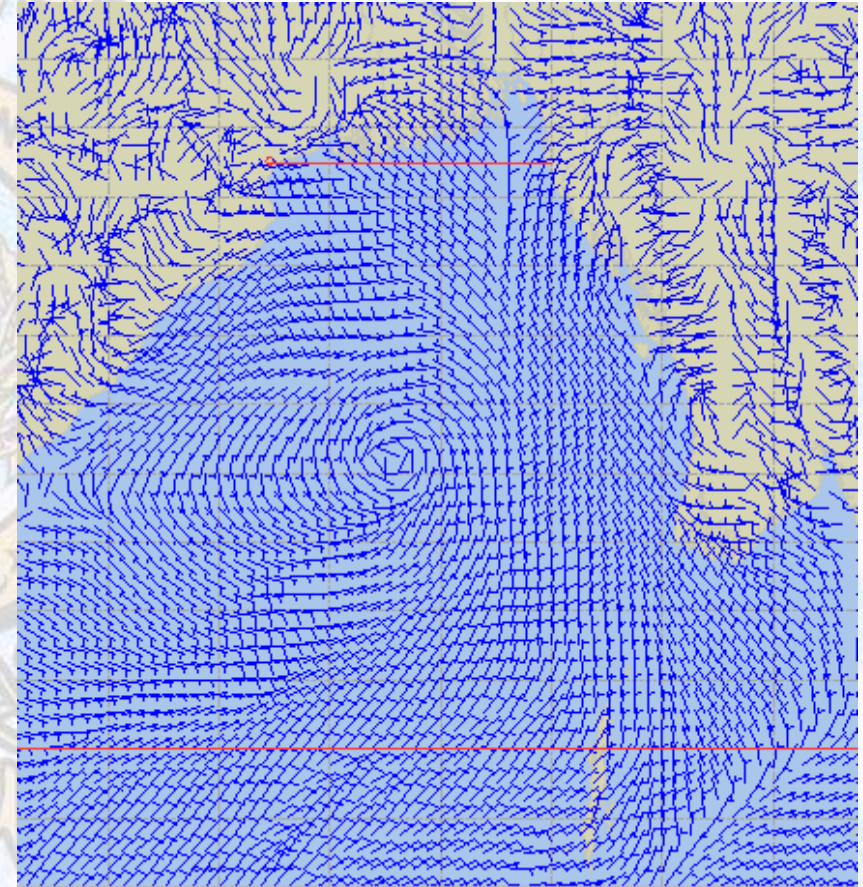
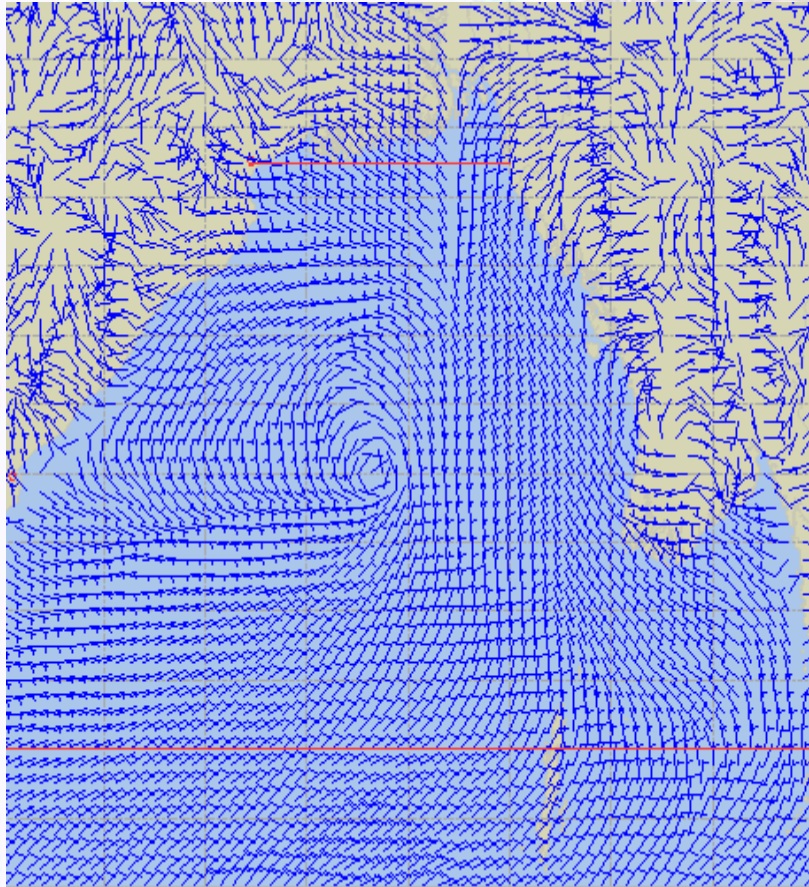
**60 Knots**



# Surface Wind Forecast – 13 & 14 Feb - 2021

13 Feb 21 Saturday

14 Feb 21 Sunday



**Legend:**



Calm  
Winds



5 Knots



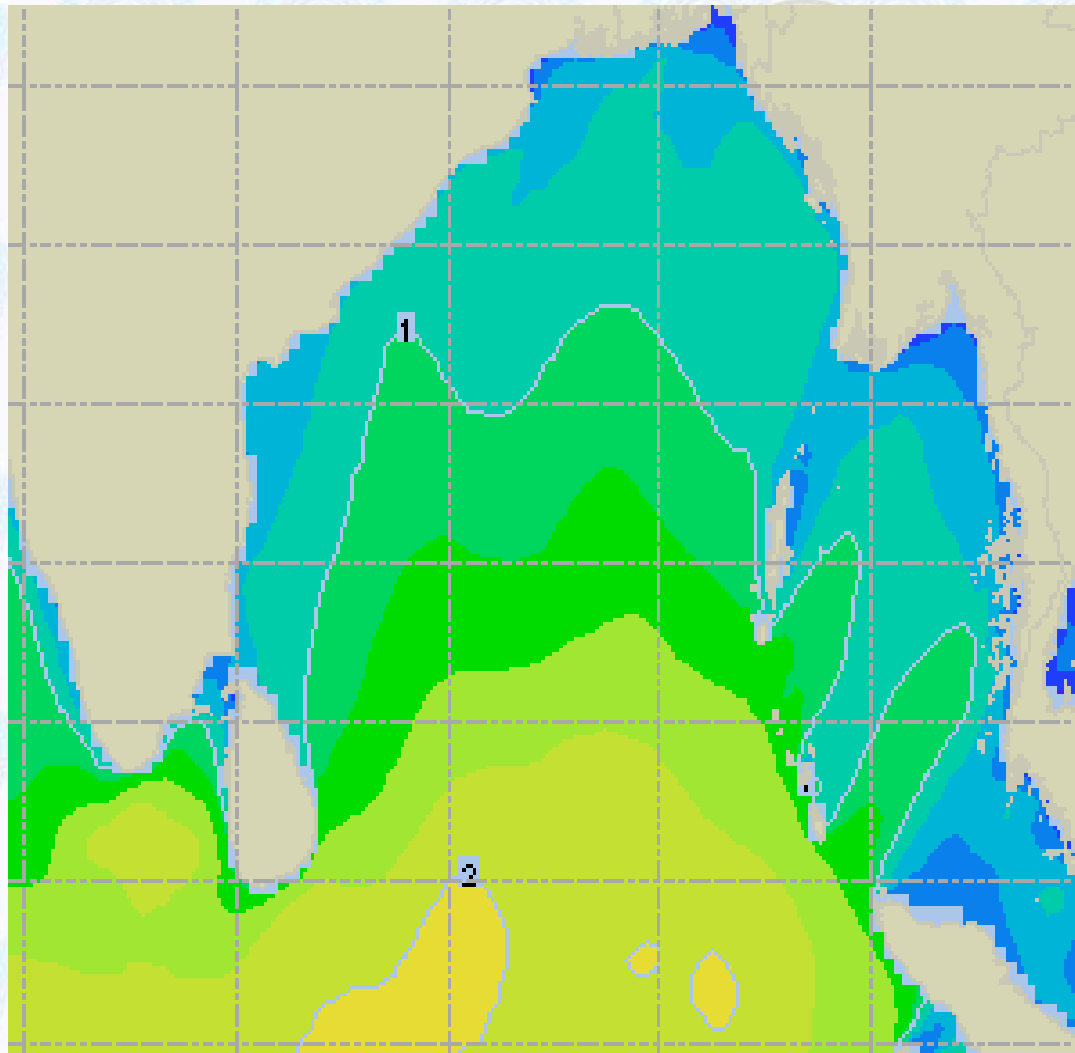
10 Knots



60 Knots



# Sea State Forecast – 12 Feb - 2021



Sea State	Ht (m)
0	0-0.1
1	0-0.1
2	0.1-0.5
3	0.5-1.25
4	1.25-2.5
5	2.5-4.0
6	4-6
7	6-9
8	9-14
9	Over 14

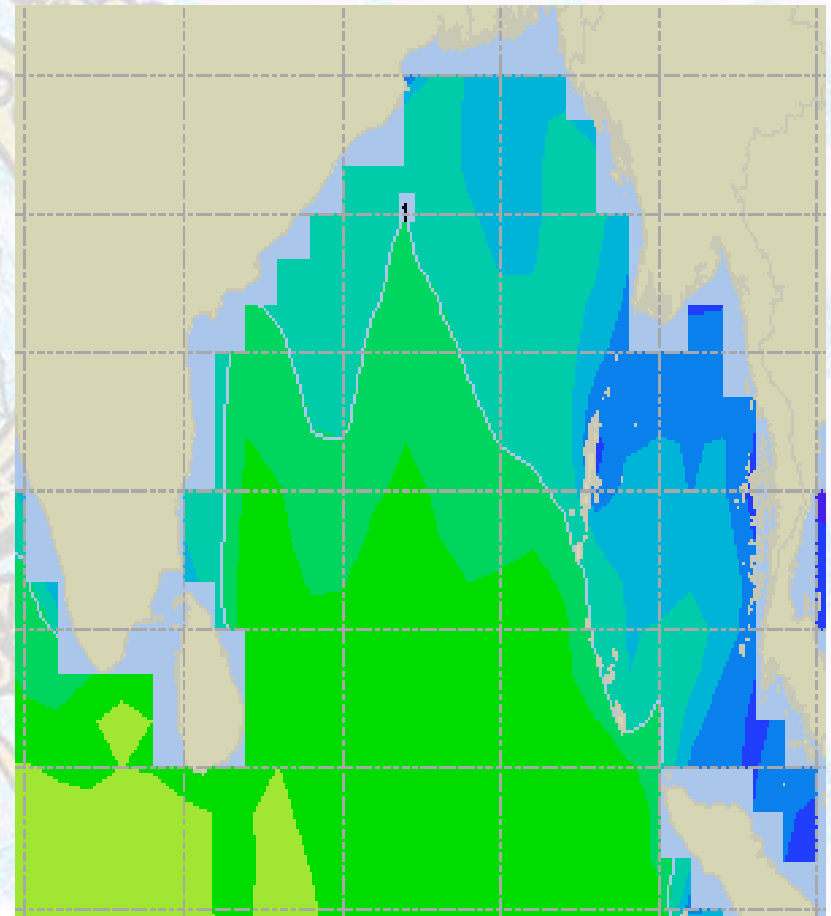
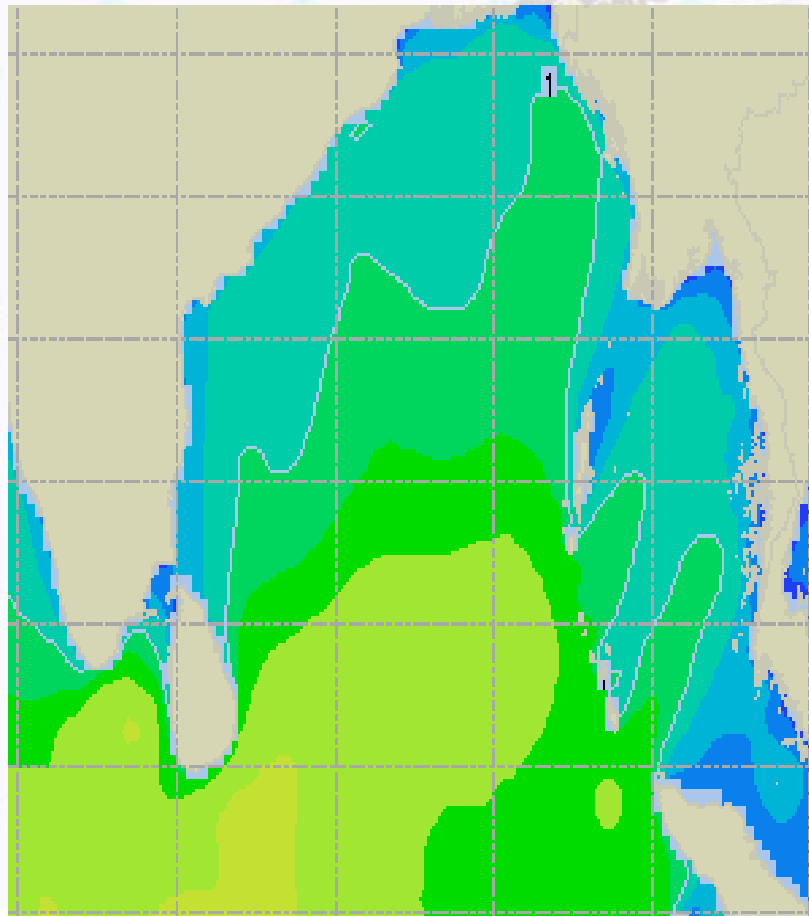




# Sea State Forecast – 13 & 14 Feb - 2021

13 Feb 21 Saturday

14 Feb 21 Sunday

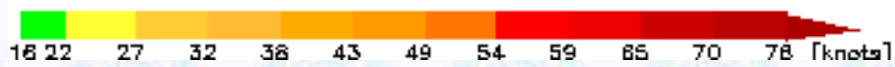
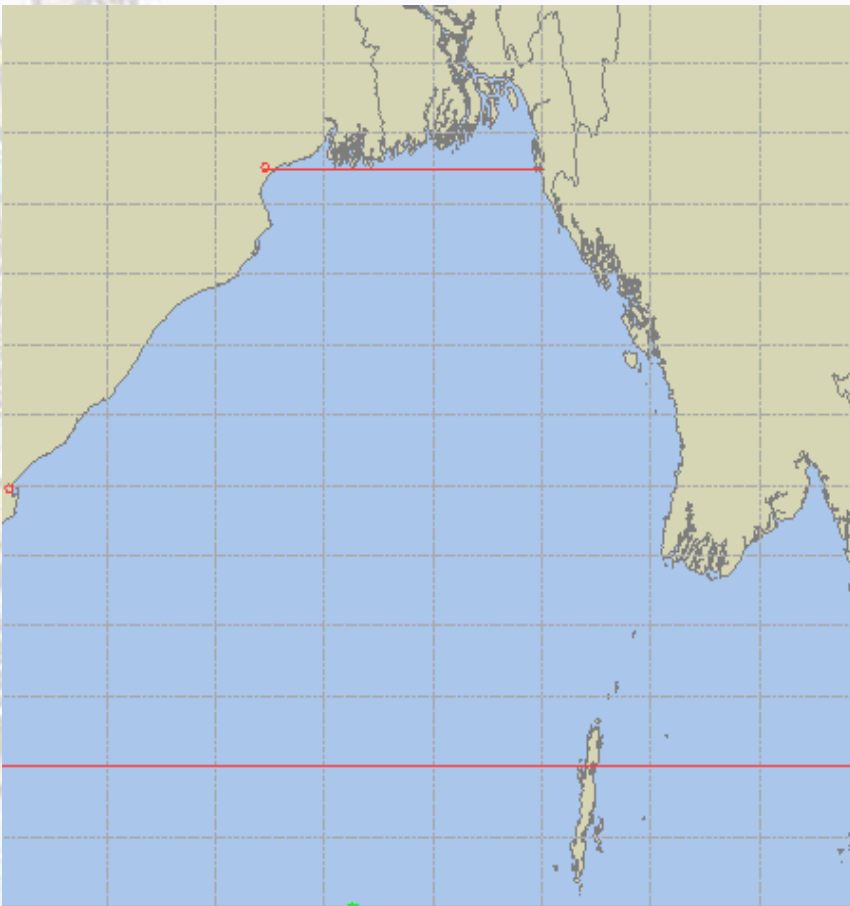
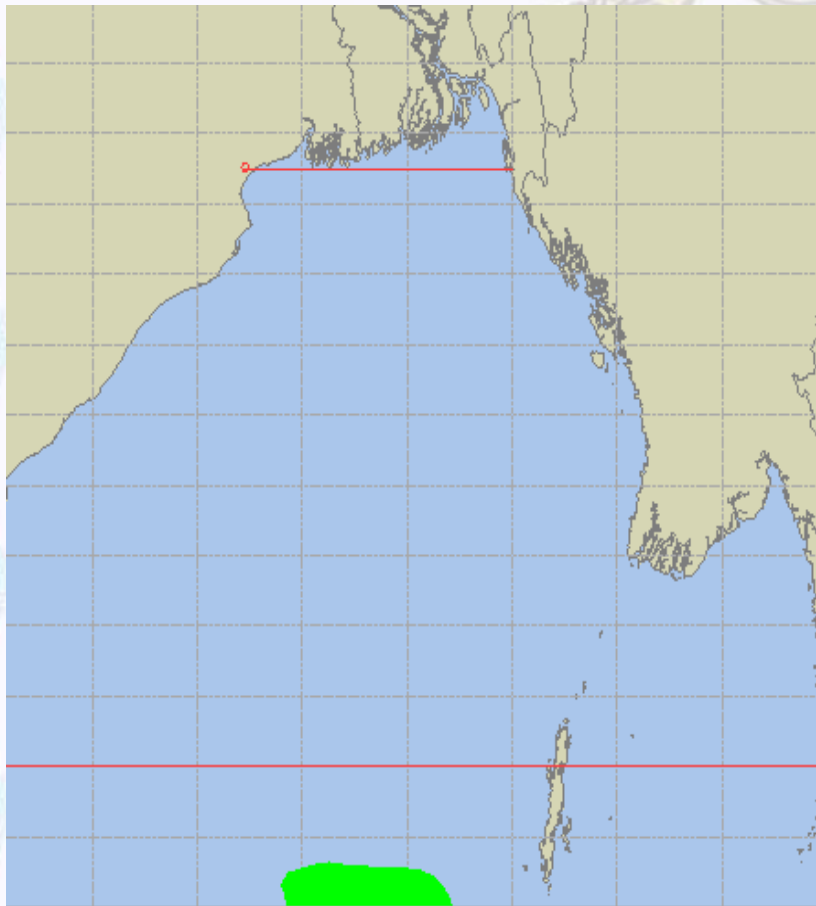




# Peak Gusting Possibilities– 12 & 13 Feb 2021

12 Feb 21 Friday

13 Feb 21 Saturday

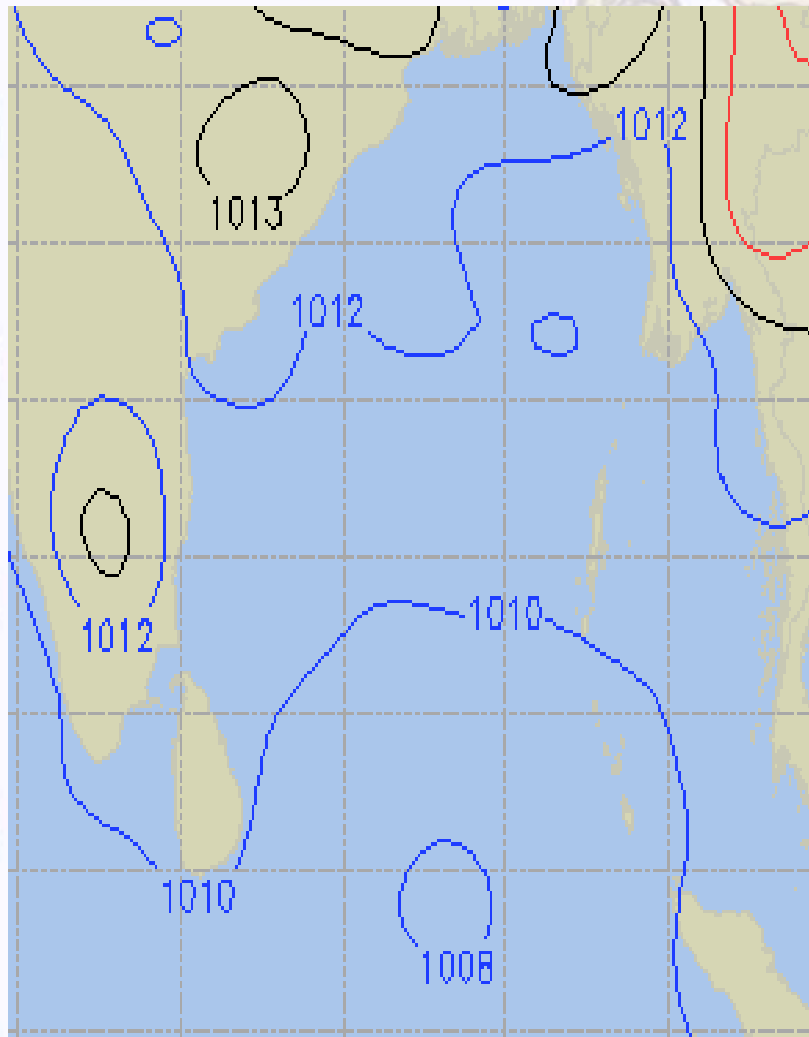




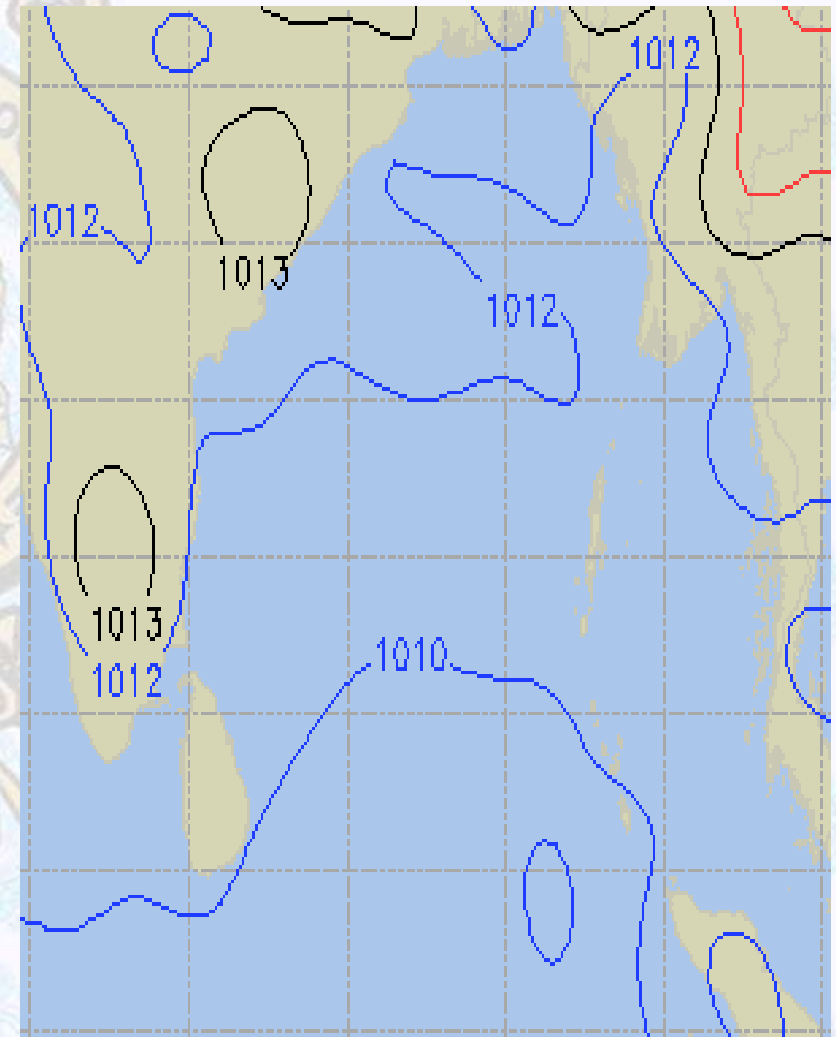


# Surface Pressure forecast – 12 & 13 Feb 2021

12 Feb 21 Friday



13 Feb 21 Saturday

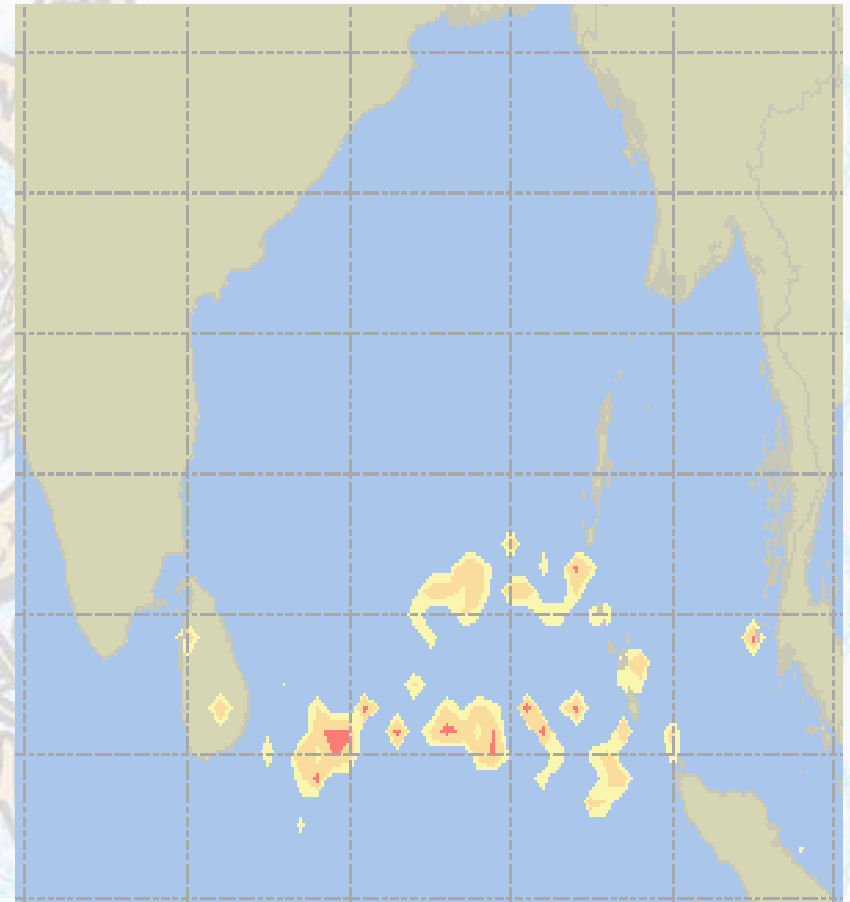
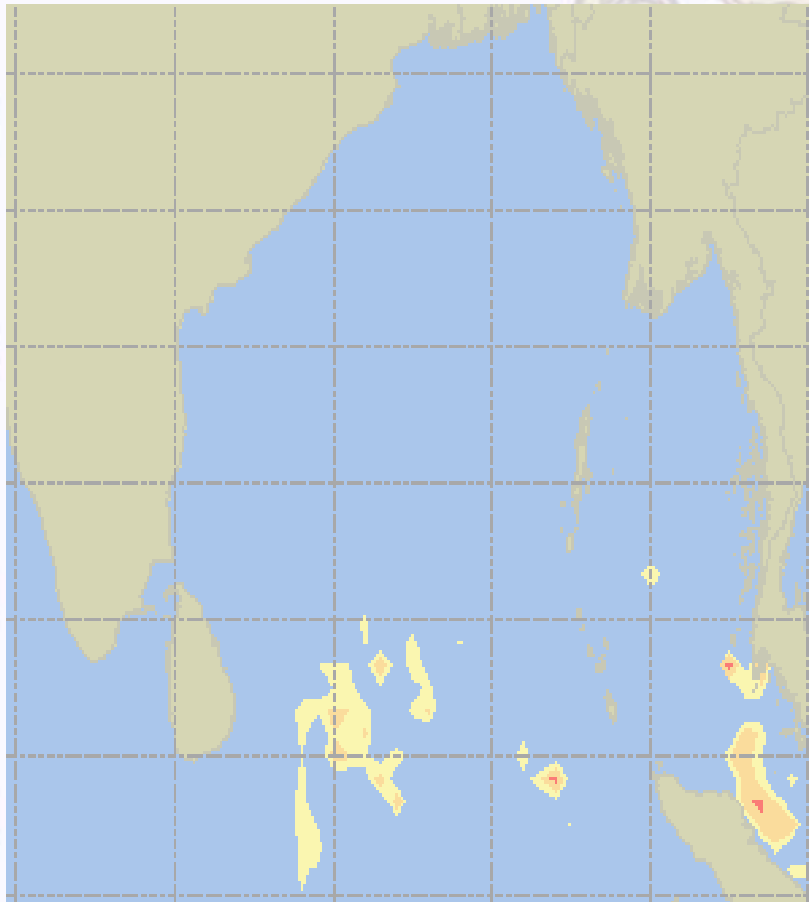




# Visibility at Sea Forecast – 12 & 13 Feb 2021

12 Feb 21 Friday

13 Feb 21 Saturday



**Visibility Scale:**



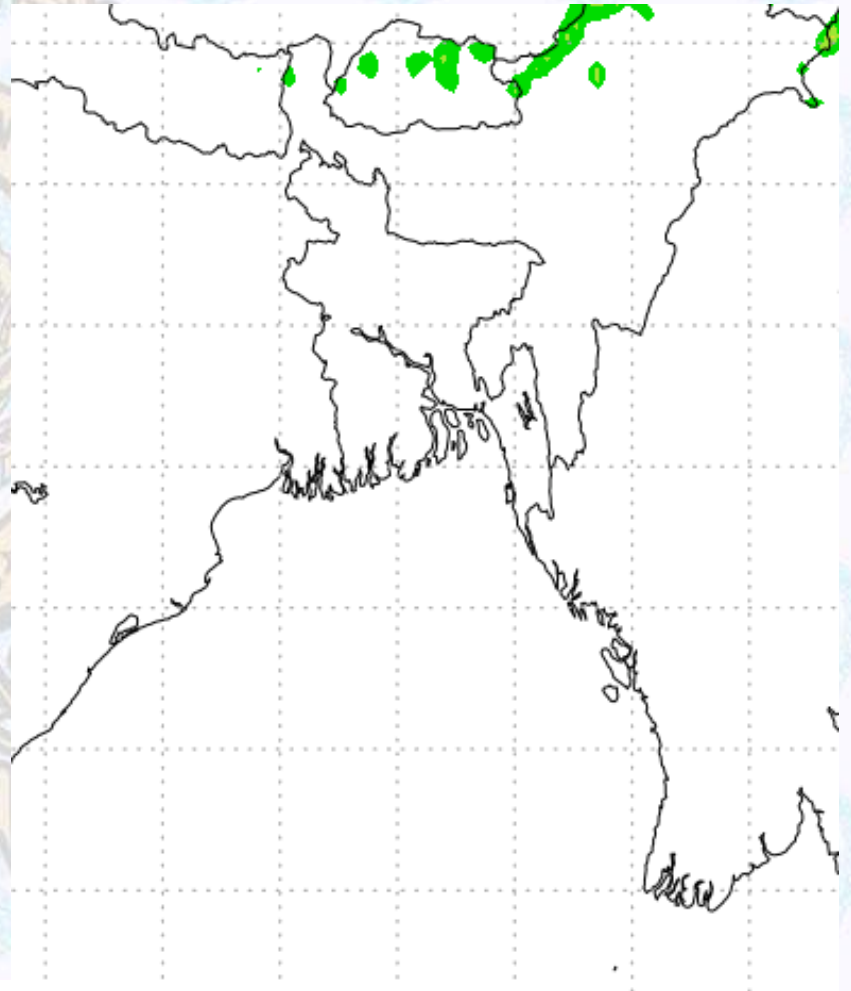
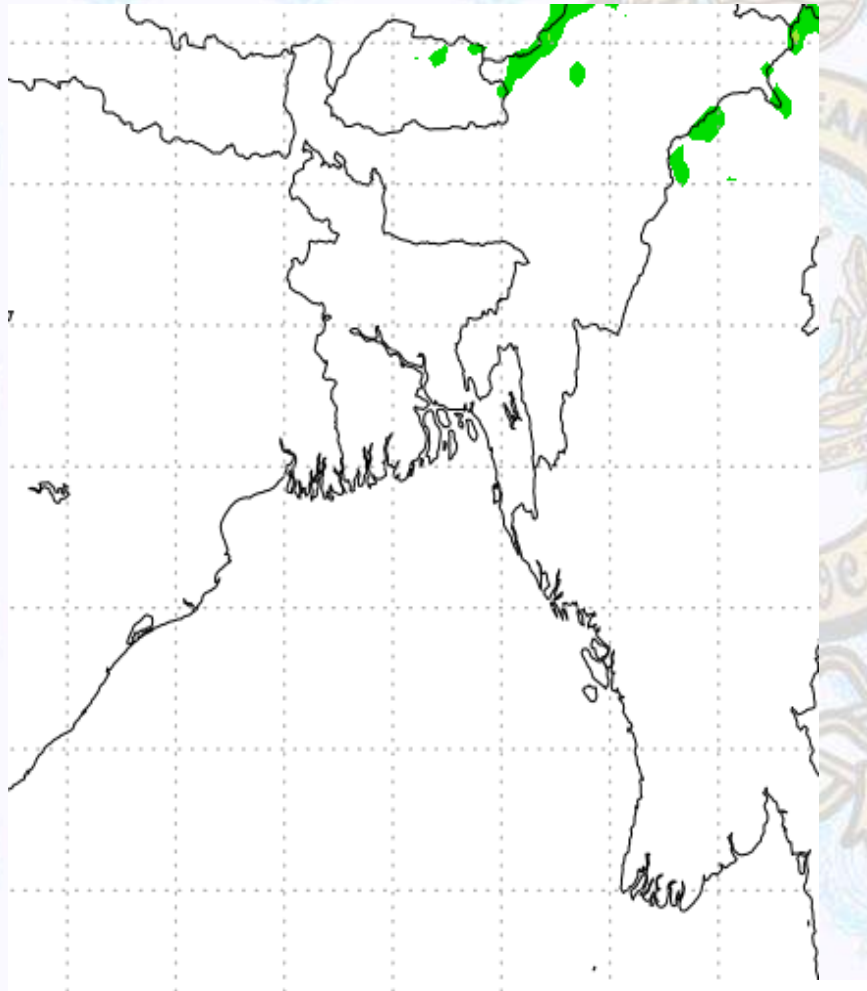
Ref (Slide 12-18): <http://www.weatheronline.co.uk/marine/weather?LEVEL>



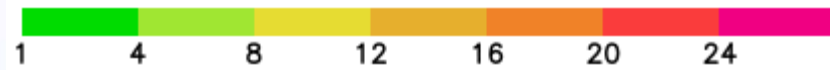
# Precipitation

Rain(mm) 12 & 13 Feb 21

Rain(mm) 13 & 14 Feb 21



Precipitation Scale (mm):





# Tidal Information

## KHAL NO. 10

## COX'S BAZAR

## HIRAN POINT

<b>12 Feb 2021</b>	<b>Time</b>	<b>Height</b>		<b>Time</b>	<b>Height</b>		<b>Time</b>	<b>Height</b>
	0116	4.25		0533	0.27		0533	0.35
	0801	0.34		1109	2.91		1126	2.61
	1343	3.91		1741	0.21		1733	0.38
	2002	0.46		2328	3.36		2338	2.88
<b>13 Feb 2021</b>	<b>Time</b>	<b>Height</b>		<b>Time</b>	<b>Height</b>		<b>Time</b>	<b>Height</b>
	0146	4.33		0609	0.21		0605	0.32
	0833	0.31		1145	2.98		1158	2.64
	1413	4.01		1817	0.20		1806	0.39
	2035	0.43		-	-		-	-
<b>14 Feb 2021</b>	<b>Time</b>	<b>Height</b>		<b>Time</b>	<b>Height</b>		<b>Time</b>	<b>Height</b>
	0215	4.37		0004	3.37		0008	2.85
	0902	0.28		0642	0.20		0633	0.33
	1442	4.08		1221	2.99		1228	2.64
	2105	0.44		1850	0.23		1836	0.44