



WEATHER FORECAST FOR BN

10 FEB - 13 FEB 2021



WEATHER FORECAST – DHAKA

10.02.2021

Hourly	2 PM	4 PM	8 PM	11 PM
Temp. / Dew Point	27 / 15	27 / 15	22 / 15	20 / 15
Wind	8 km/h WNW	8 km/h W	5 km/h WNW	3 km/h NNW
Humidity	48%	47%	64%	74%
Chance of Precip	1%	1%	2%	4%
Cloud Cover	3%	7%	14%	4%
Conditions	Sunny	Sunny	Clear	Clear
Sunrise Sunset	06: 35 AM 17: 50 PM			

Conditions

Pressure : 1014 hpa

Visibility : 3.22 km

Ref: <https://www.wunderground.com/weather/bd/dhaka>



WEATHER FORECAST – CHATTOGRAM

10.02.2021

Hourly	2 PM	4 PM	8 PM	11 PM
Temp. / Dew Point	27 / 15	26 / 14	21 / 15	18 / 15
Wind	11 km/h W	11 km/h W	7 km/h W	3 km/h N
Humidity	50%	47%	68%	81%
Chance of Precip.	1%	1%	1%	3%
Cloud Cover	1%	1%	1%	1%
Conditions	Sunny	Sunny	Clear	Clear
Sunrise	06: 27 AM			
Sunset	17: 47 PM			

Conditions

Pressure : 1013 hpa

Visibility : 5.6 Km

Ref: <https://www.wunderground.com/weather/bd/chittagong>



WEATHER FORECAST – KHULNA

10.02.2021

Hourly	2 PM	4 PM	8 PM	11 PM
Temp. / Dew Point	27 / 12	27 / 13	21 / 14	18 / 15
Wind	5 km/h NW	4 km/h WNW	2 km/h SSW	1 m/h SSW
Humidity	39%	40%	64%	78%
Chance of Precip.	1%	1%	2%	3%
Cloud Cover	1%	3%	1%	1%
Conditions	Sunny	Sunny	Clear	Clear
Sunrise Sunset	06: 37 AM 17: 55 PM			

Conditions

Pressure : 1014 hpa

Visibility : 5.7 Km

Ref: <https://www.wunderground.com/weather/bd/khulna>



GENERAL WEATHER FORECAST – DHAKA

Description	11 Feb 2021	12 Feb 2021	13 Feb 2021
Temperature (C)	28 °C/ 16 °C	28 °C/ 16 °C	28 °C/ 16 °C
Summary	Sunny	Sunny	Sunny
Sun Rise/Set	6h34m24s/17h51m36s	6h33m48s/17h52m06s	6h33m12s/17h52m42s
Day Length	11h17m12s	11h18m18s	11h19m30s
Moon Rise/ Set	6:19AM 5:27AM	7:03AM 6:25AM	7:42AM 7:21AM
Moon Phase/ illu	New Moon, 0%	New Moon, 1%	Waxing Crescent, 4%
Nautical Twilight	05:44,18:41	05:43,18:42	05:43,18:42
Civil Twilight	06:10,18:14	06:10,18:15	06:09,18:15
Humidity	D : 63% N : 77%	D : 62% N : 76%	D : 62% N : 76%
Barometer (mb)	1012	1012	1013
Visibility	Hazy/ Moderate	Hazy/ Moderate	Hazy/ Moderate
Precip Chance	5%	5%	5%
Wind (mph)	6 Km/h S	8 Km/h W	9 Km/h W

Ref: <https://weather.com/weather/5day//BGXX0003:1:BG>



GENERAL WEATHER FORECAST– CHATTOGRAM

Description	11 Feb 2021	12 Feb 2021	13 Feb 2021
Temperature (C)	27 °C/ 16 °C	26 °C/ 15 °C	27 °C/ 15 °C
Summary	Sunny	Sunny	Sunny
Sun Rise/Set	6h26m54s/ 17h47m36s	6h26m18s/ 17h48m06s	6h25m48s/ 17h48m42s
Day Length	11h20m42s	11h21m48s	11h22m54s
Moon Rise/ Set	6:10AM 5:24AM	6:55AM 6:21AM	7:34AM 7:17AM
Moon Phase/ illu	New Moon, 0%	New Moon, 1%	Waxing Crescent, 4%
NauticalTwilight	05:37, 18:36	05:36, 18:37	05:36, 18:37
Civil Twilight	06:03, 18:10	06:03, 18:10	06:02, 18:11
Humidity	D : 60% N : 80%	D : 64% N : 86%	D : 65% N : 83%
Barometer (mb)	1013	1013	1013
Visibility	Hazy/ Moderate	Hazy/ Moderate	Hazy/ Moderate
Precip Chance	3%	3%	5%
Wind (mph)	13 Km/h NW	12 Km/h WNW	13 Km/h NW

Ref: <https://weather.com/weather/5day//BGXX0002:1:BG>



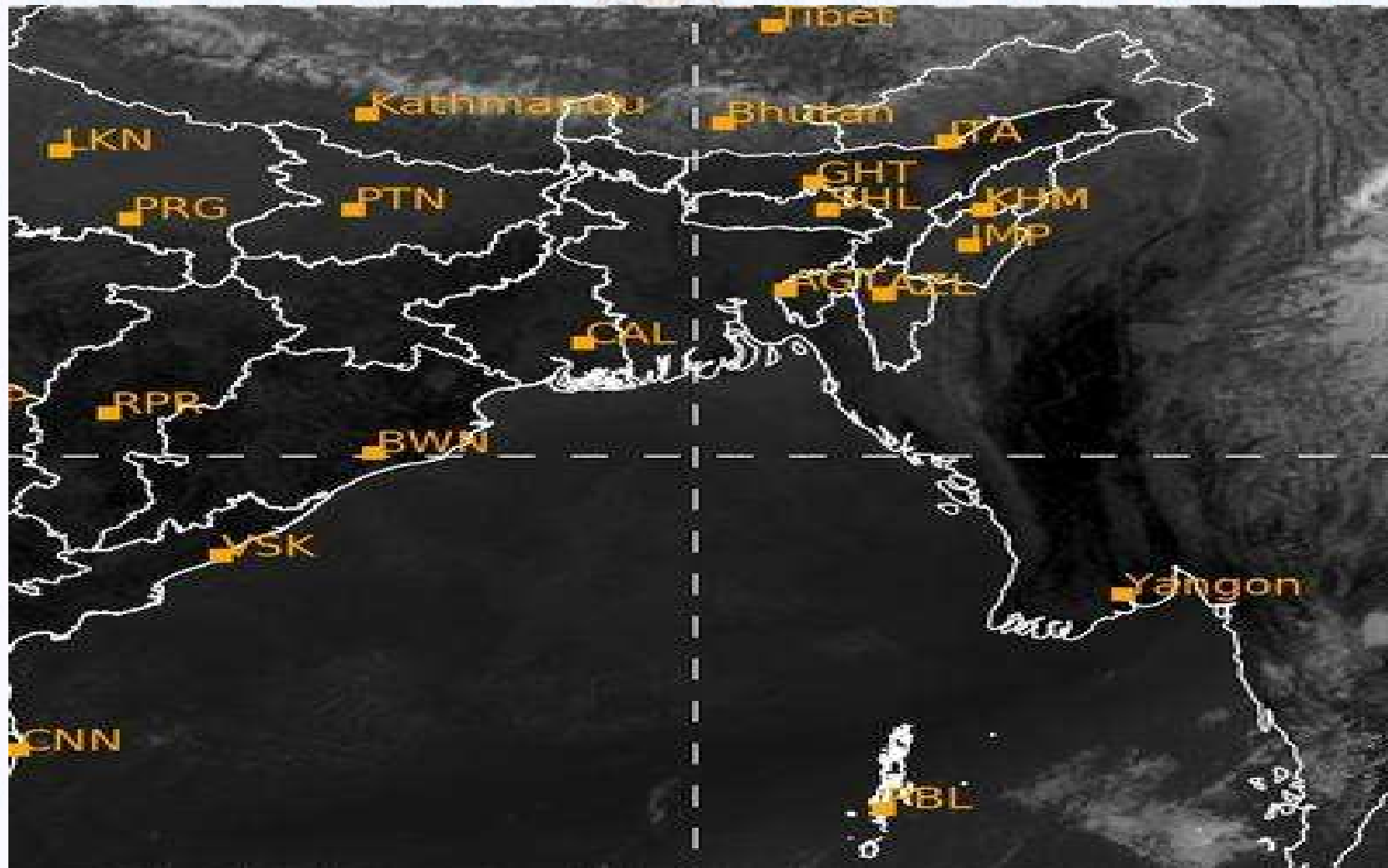
GENERAL WEATHER FORECAST – KHULNA

Description	11 Feb 2021	12 Feb 2021	13 Feb 2021
Temperature(C)	29°C/ 17°C	29°C/ 17°C	29°C/ 17°C
Summary	Sunny	Sunny	Sunny
Sun Rise/Set	6h36m42s/ 17h56m06s	6h36m06s/ 17h56m42s	6h35m30s/ 17h57m18s
Day Length	10h19m24s	10h20m36s	10h21m48s
Moon Rise/Set	6:20AM 5:32AM	7:05AM 6:30AM	7:44AM 7:26AM
Moon Phase/illu	New Moon, 0%	New Moon, 1%	Waxing Crescent, 4%
Nautical Twilight	05:46, 18:45	05:46, 18:46	05:45, 18:46
Civil Twilight	06:13, 18:19	06:12, 18:19	06:12, 18:20
Humidity	D : 60% N : 88%	D : 63% N : 86%	D : 63% N : 88%
Barometer (mb)	1012	1013	1013
Visibility	Hazy/ Moderate	Hazy/ Moderate	Hazy/ Moderate
Precip Chance	6%	7%	6%
Wind (mph)	8 km/h WSW	8 km/h WNW	8 km/h W

Ref: <https://weather.com/weather/5day//BGXX0005:1:BG>



SATELLITE VIEW OF BAY OF BENGAL

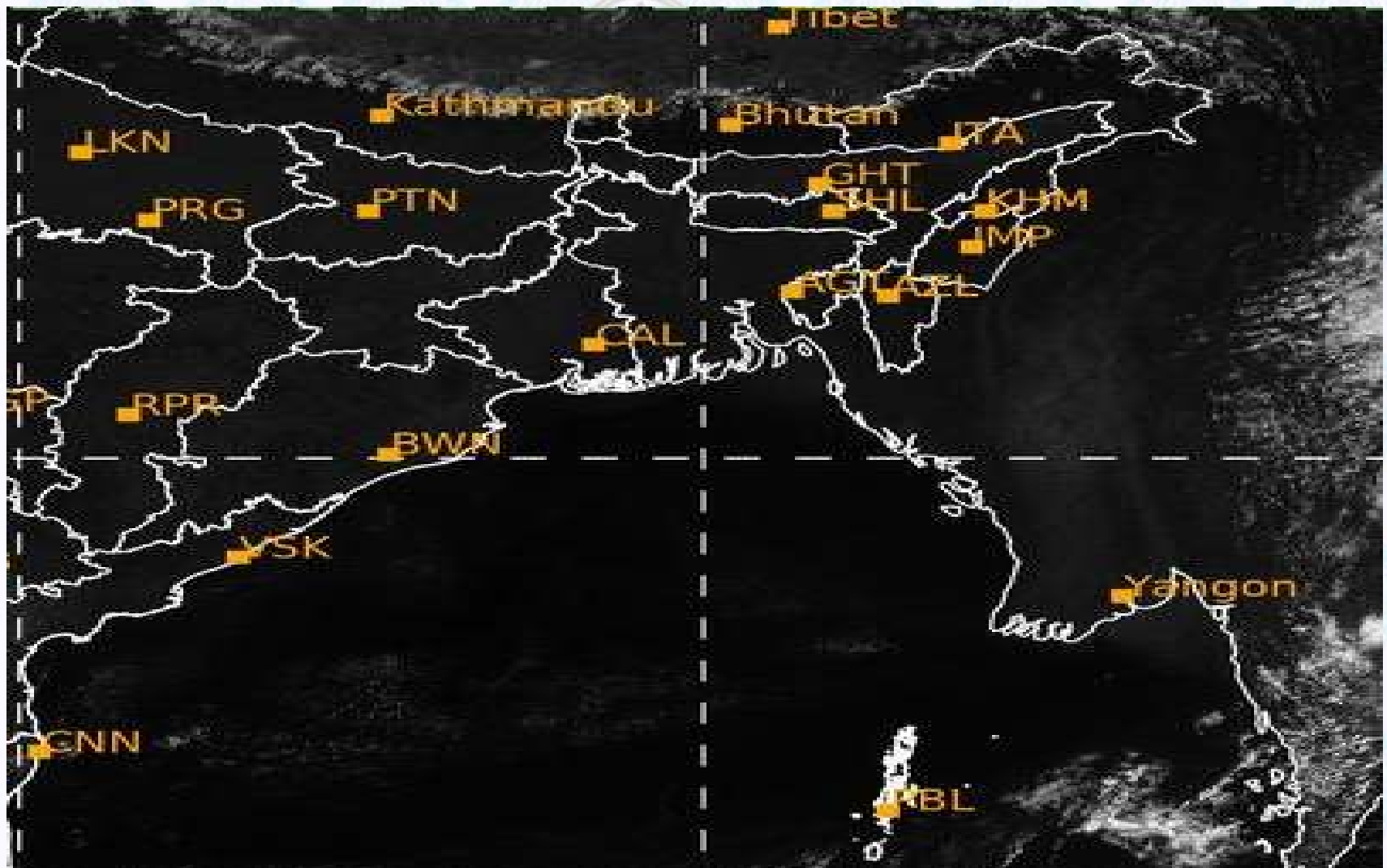


10/02/2021, 11:00 UTC MATSAT-IR

Ref: <http://satellite.imd.gov.in/insat.htm>



SATELLITE VIEW OF BAY OF BENGAL



10/02/2021, 11:00 MATSAT-VIS

Ref: <http://satellite.imd.gov.in/insat.htm>



Fleet Forecast Sea Area C-90 (Valid for 12 Hrs Commencing 1000 UTC of 10.02.2021)

Part One	NO STORM WARNING.	
Part Two	SEASONAL LOW LIES OVER SOUTH BAY.	
Part Three	Weather	TEMPORARY PARTLY CLOUDY OVER AREA C-90.
	Wind	NORTH/NORTH-EASTERLY 08-12 KTS.
	Visibility	03-05 KMS, REDUCING TO 1000 M OR LESS IN MIST/FOG.
	Outlook	FOR SUBSEQUENT 12 HOURS: LITTLE CHANGE.
	MSL Pressure	AT = 10,0000 UTC. CHATTOGRAM =1013 HPA



Inland River Port Warning (VALID TILL 06 PM OF 10.02.2020)

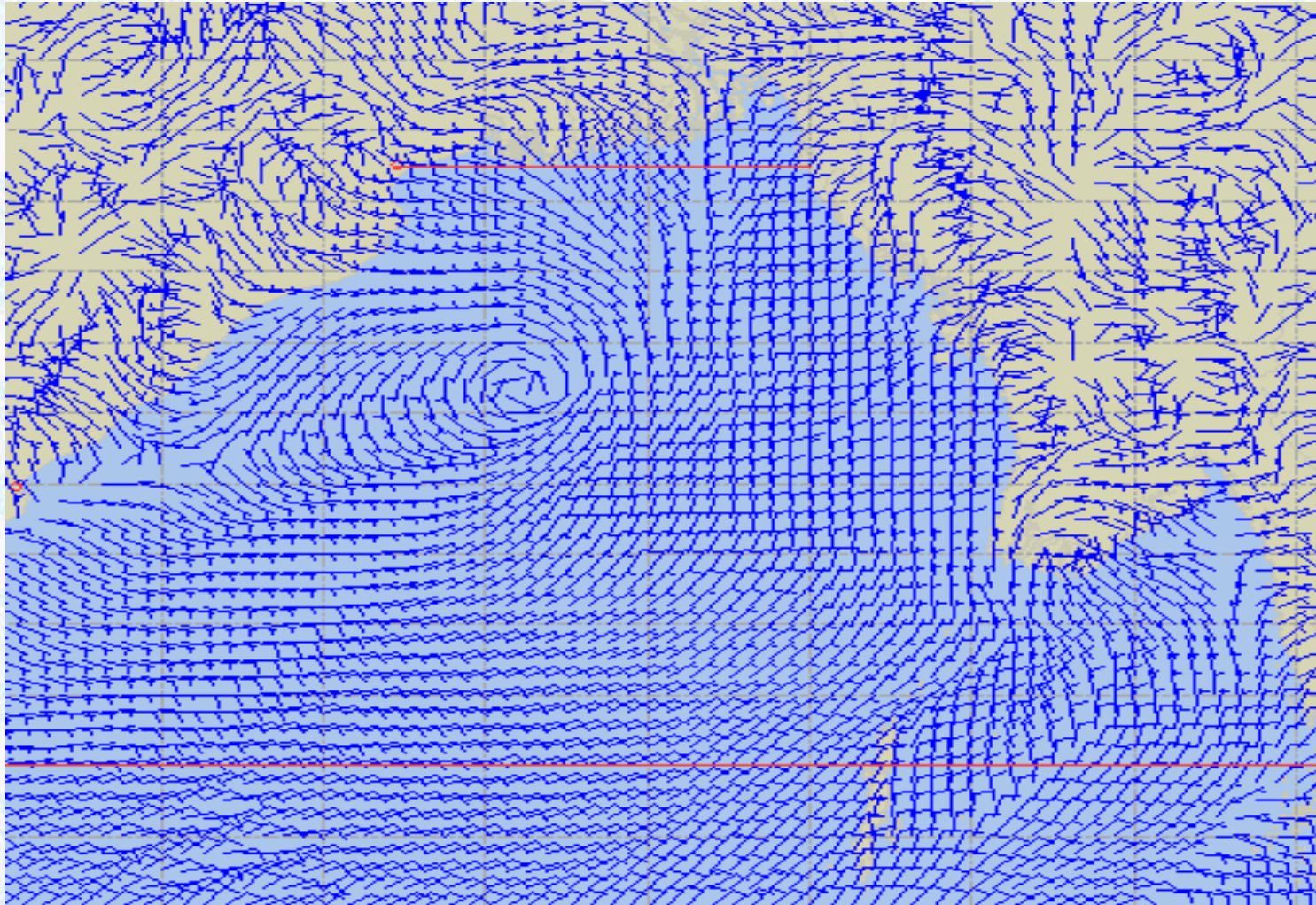
THERE IS NO INLAND RIVERPORT WARNING AND NO SIGNAL IS TO BE HOISTED.



Ref: <http://www.bmd.gov.bd/?/home>



Surface Wind Forecast- 11 Feb - 2021



Legend:



**Calm
Winds**



5 Knots



10 Knots



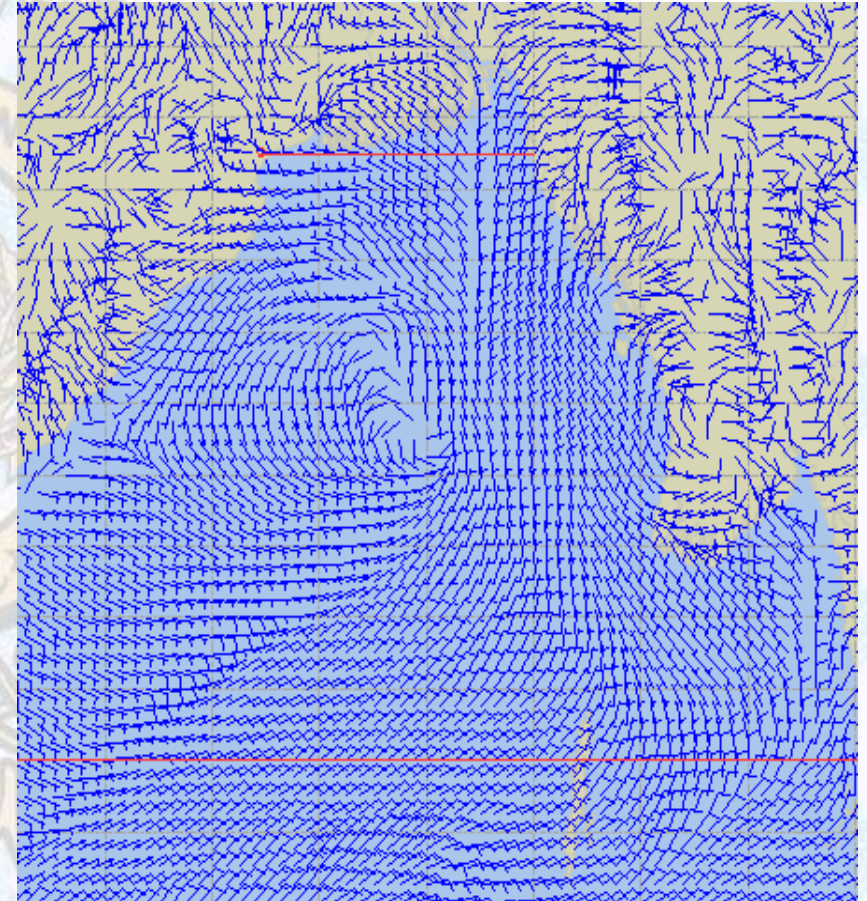
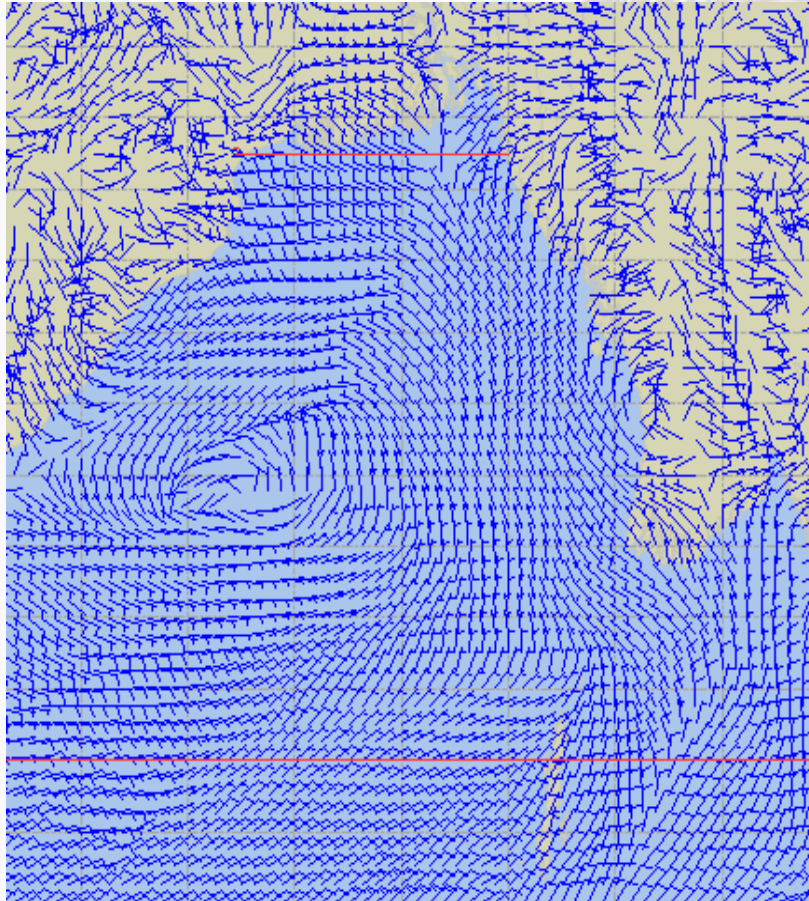
60 Knots



Surface Wind Forecast – 12 & 13 Feb - 2021

12 Feb 21 Friday

13 Feb 21 Saturday



Legend:



Calm
Winds



5 Knots



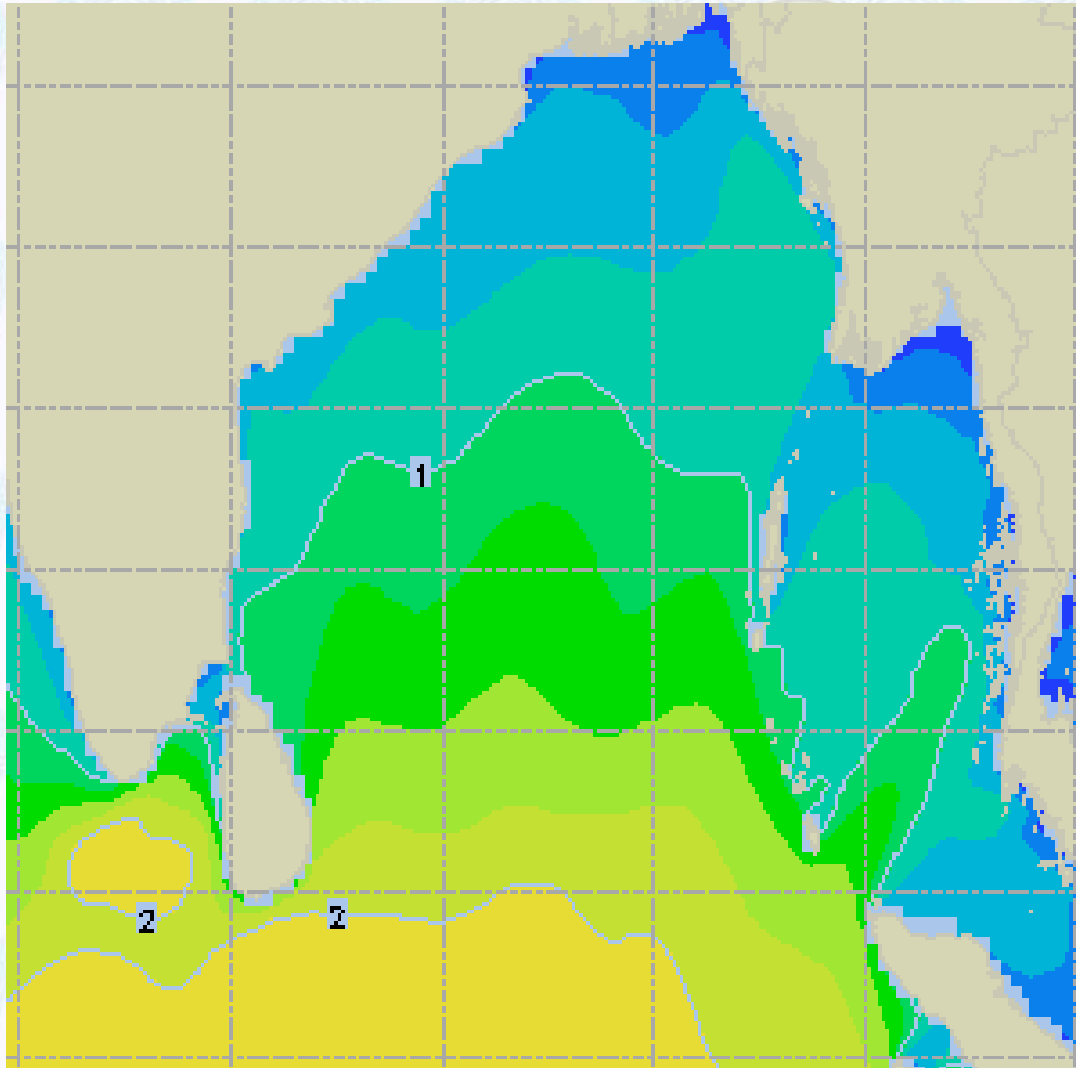
10 Knots



60 Knots



Sea State Forecast – 11 Feb - 2021



Sea State	Ht (m)
0	0-0.1
1	0-0.1
2	0.1-0.5
3	0.5-1.25
4	1.25-2.5
5	2.5-4.0
6	4-6
7	6-9
8	9-14
9	Over 14

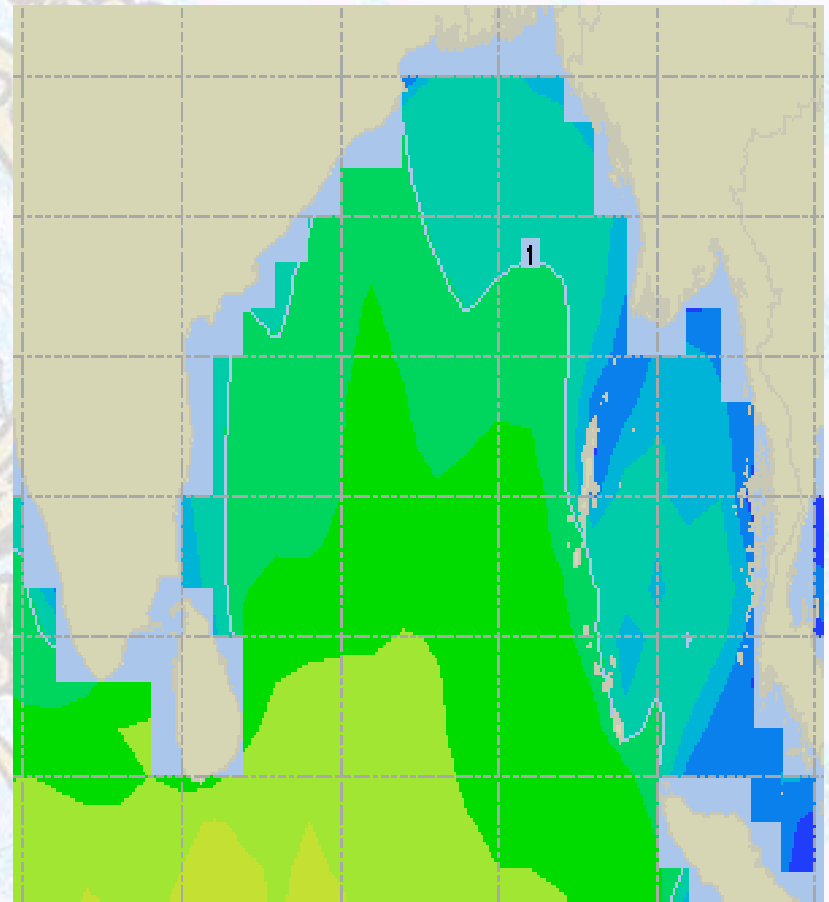
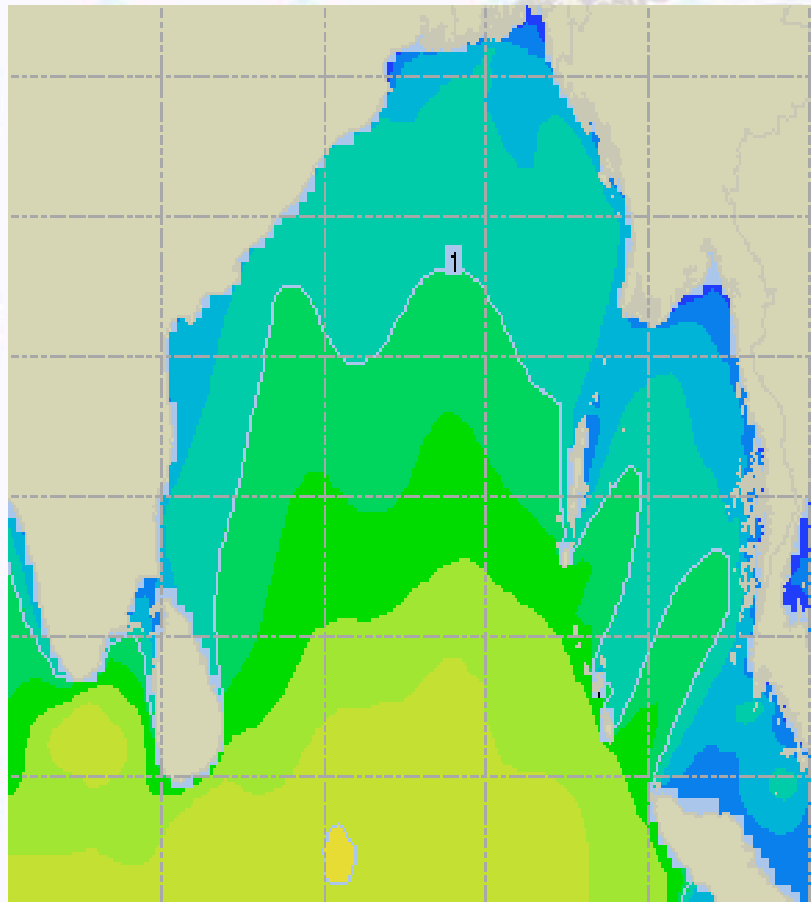




Sea State Forecast – 12 & 13 Feb - 2021

12 Feb 21 Friday

13 Feb 21 Saturday

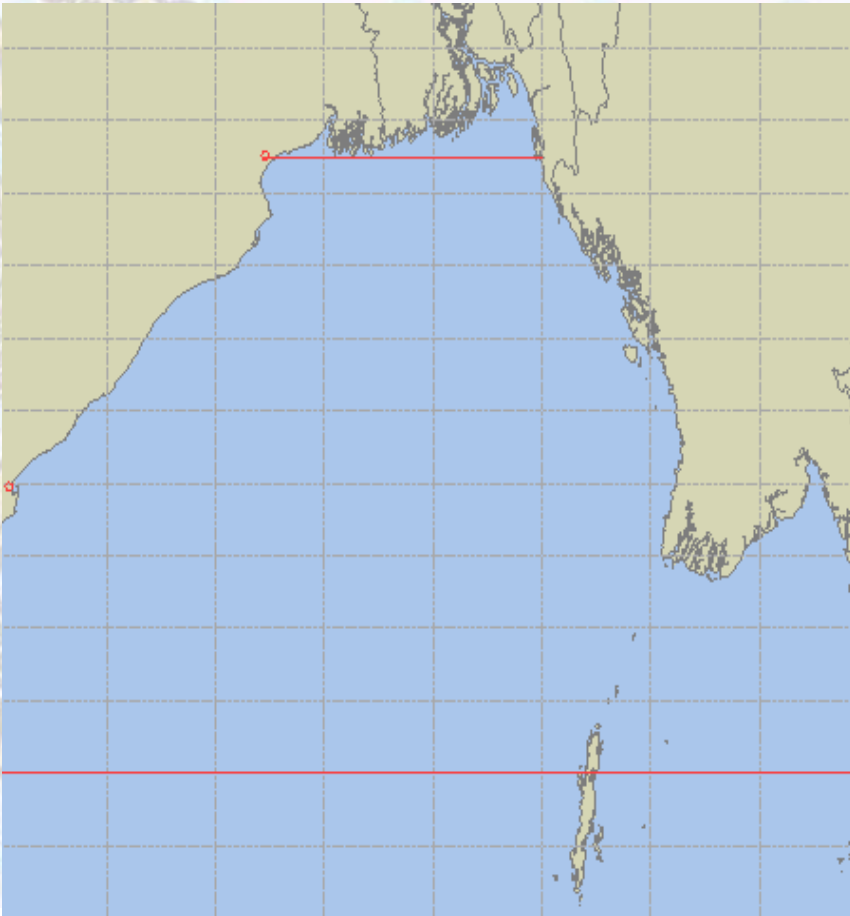
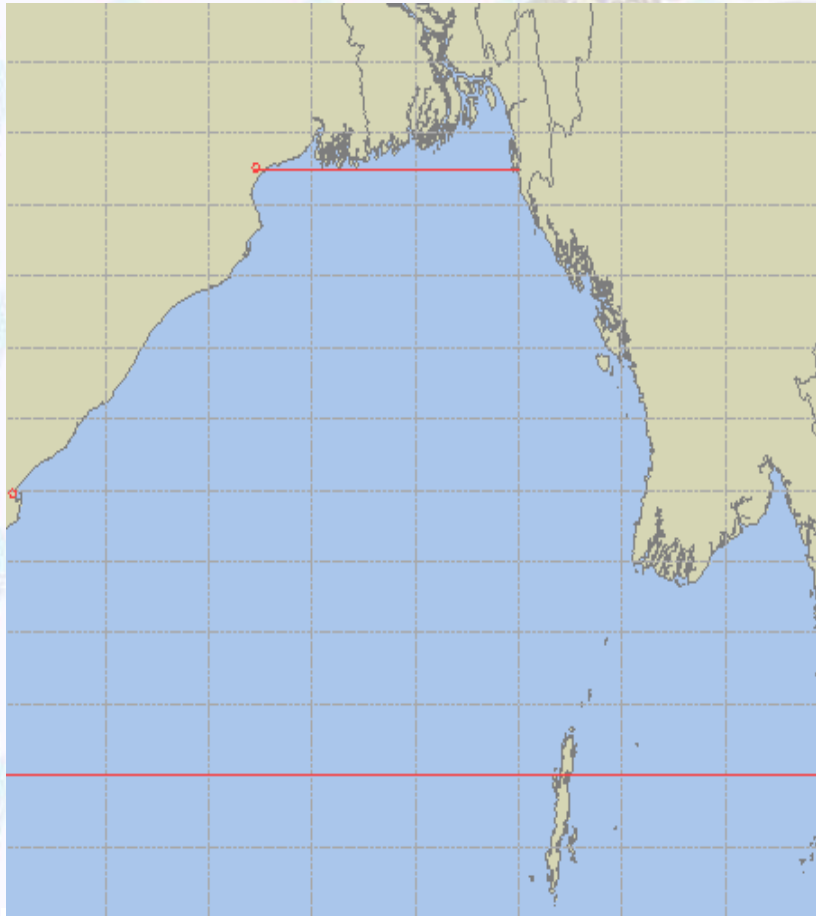




Peak Gusting Possibilities– 11 & 12 Feb 2021

11 Feb 21 Thursday

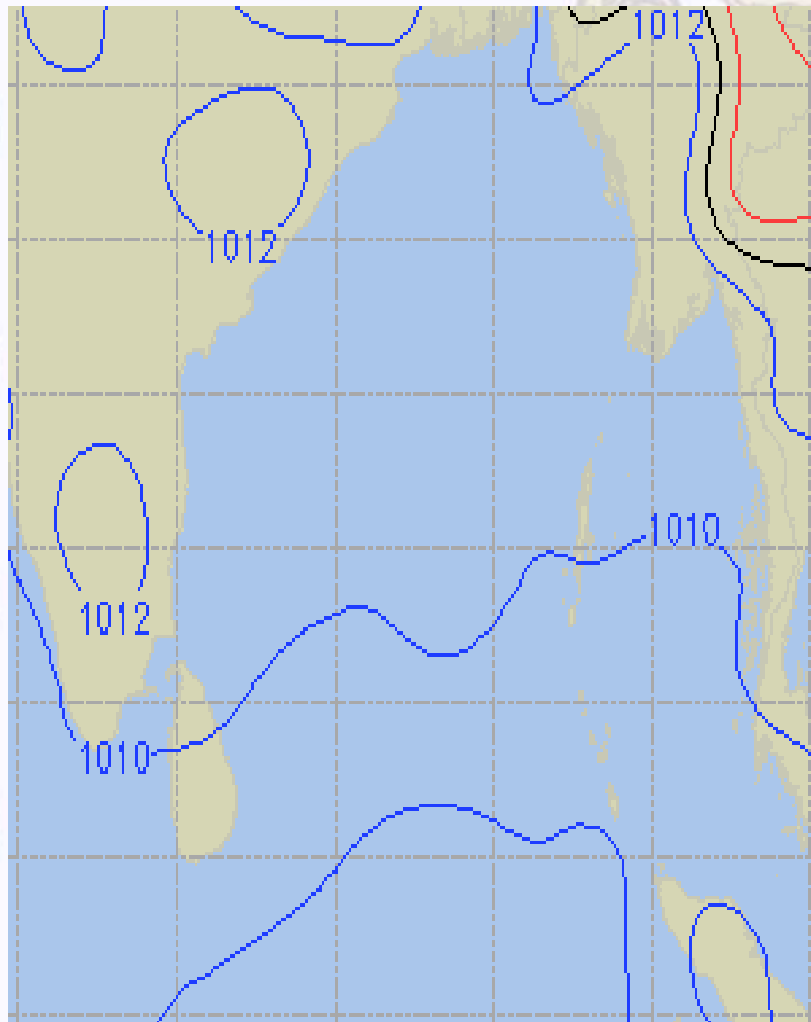
12 Feb 21 Friday



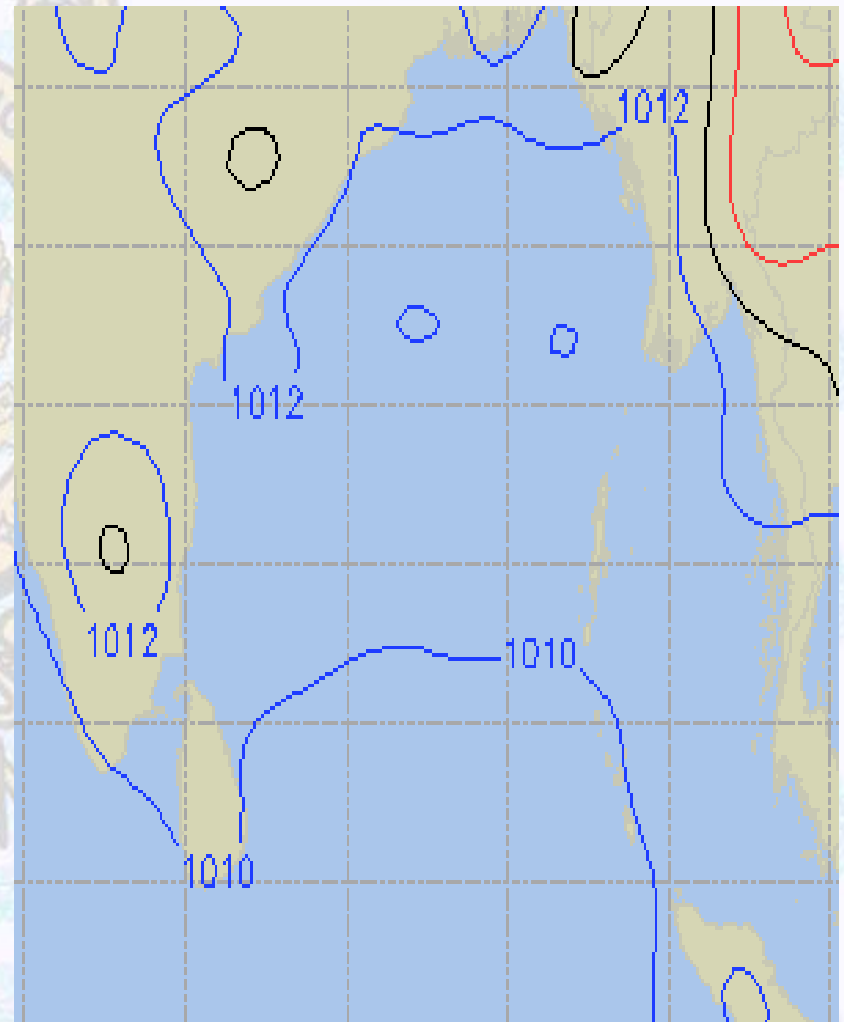


Surface Pressure forecast – 11 & 12 Feb 2021

11 Feb 21 Thursday



12 Feb 21 Friday

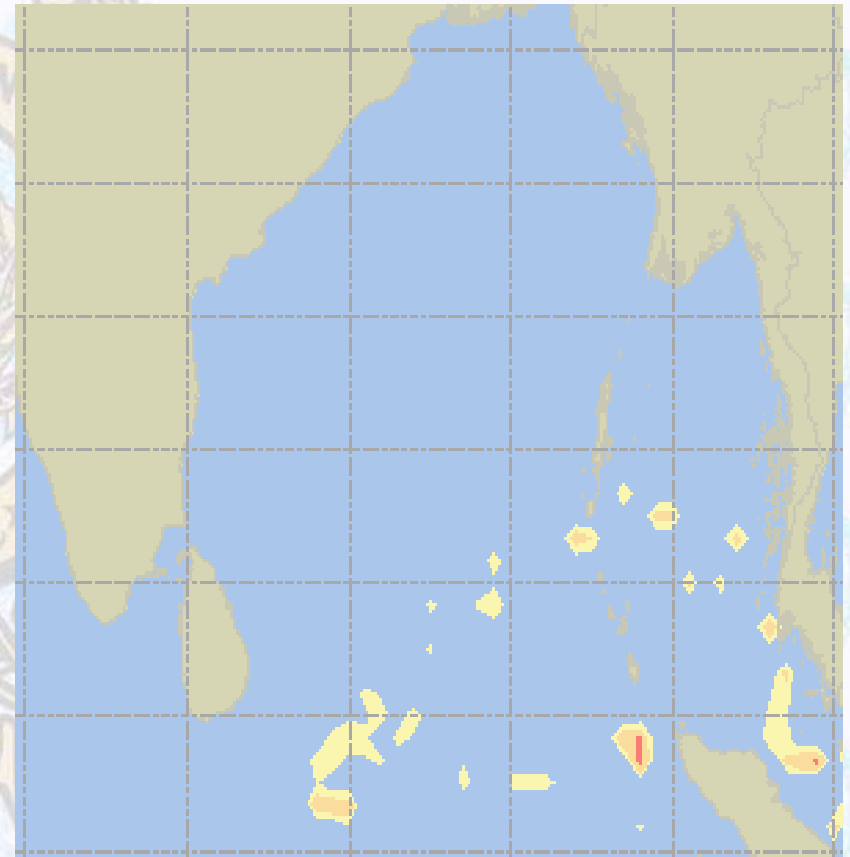
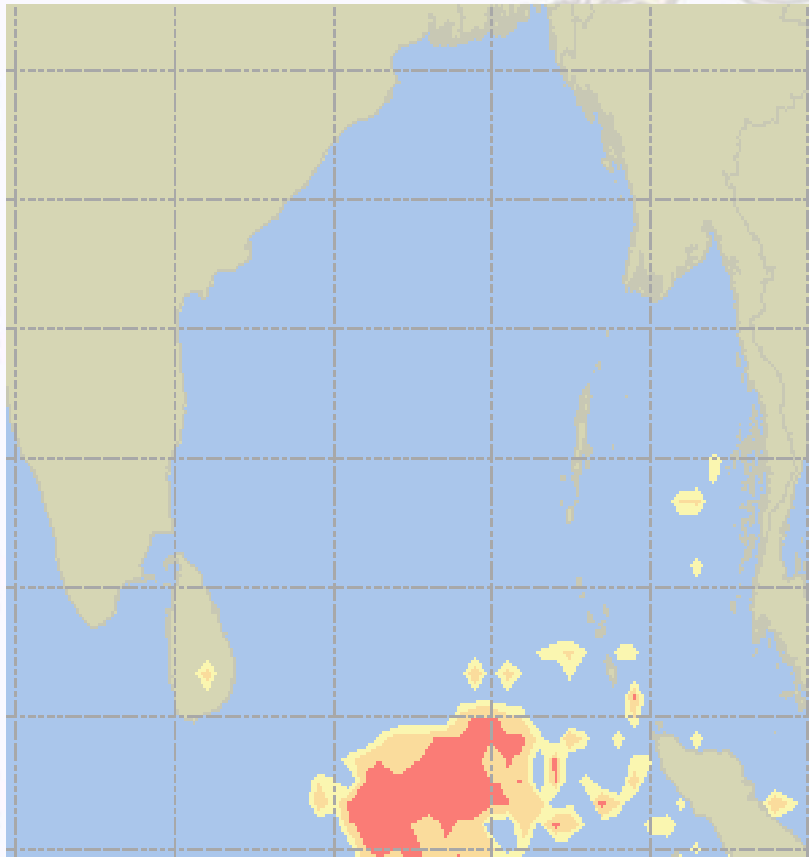




Visibility at Sea Forecast – 11 & 12 Feb 2021

11 Feb 21 Thursday

12 Feb 21 Friday



Visibility Scale:



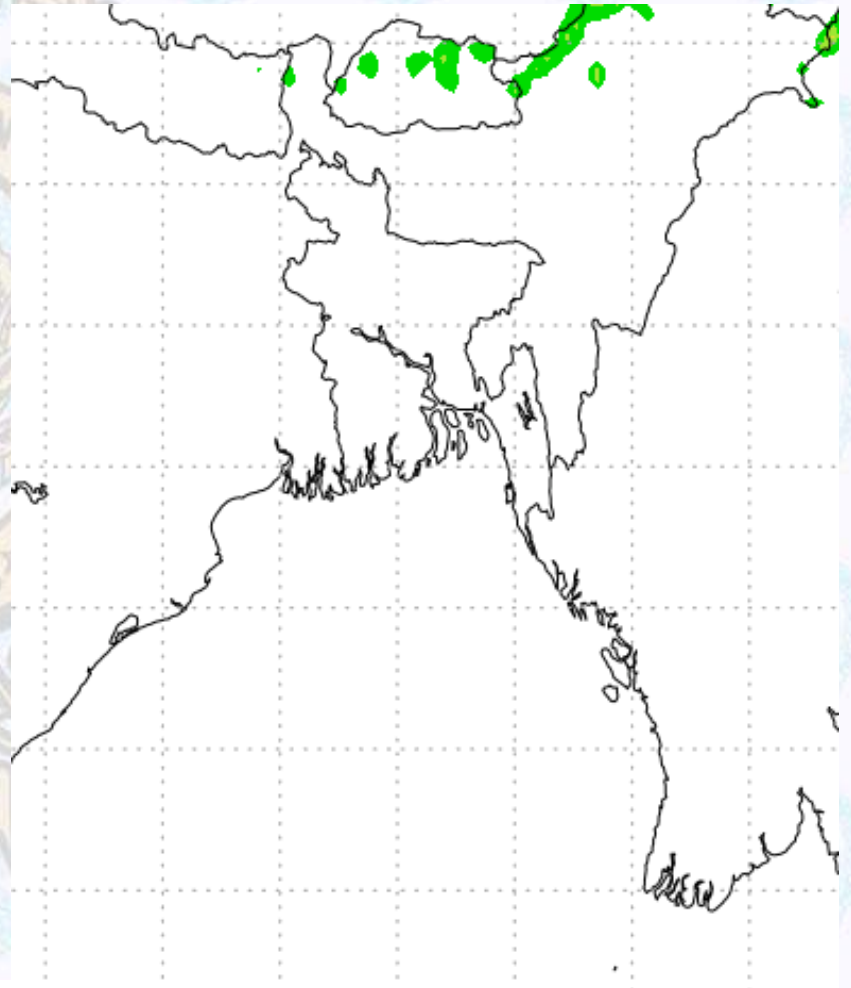
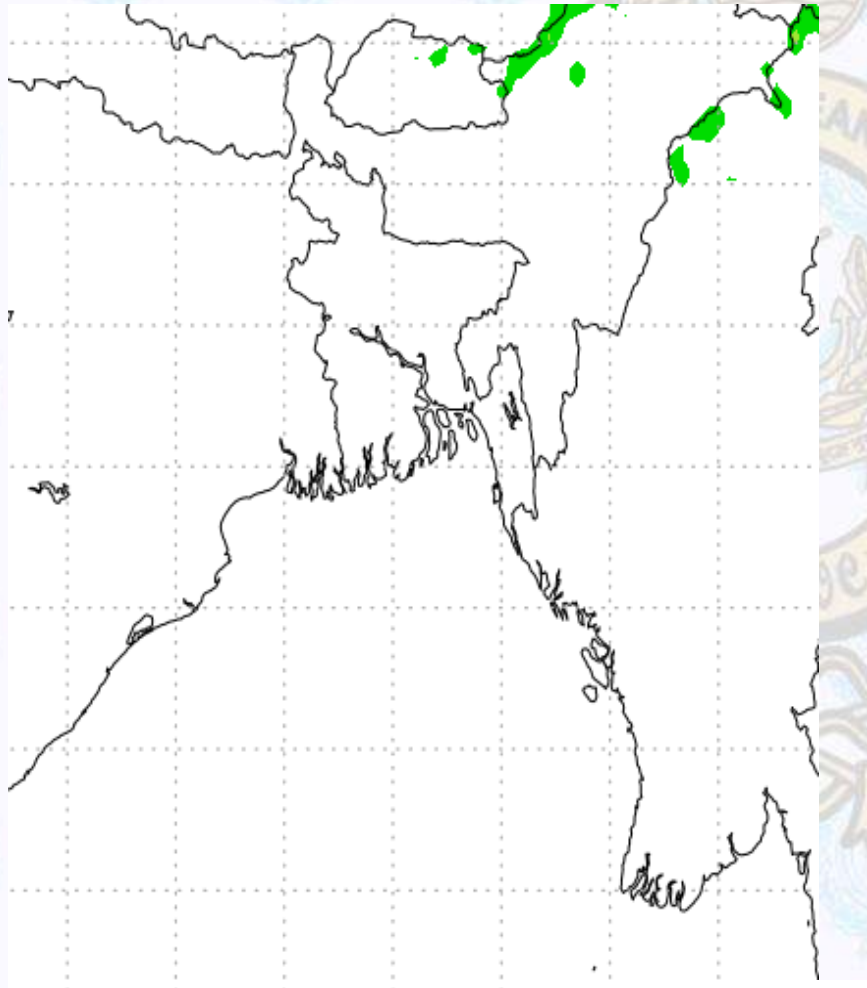
Ref (Slide 12-18): <http://www.weatheronline.co.uk/marine/weather?LEVEL>



Precipitation

Rain(mm) 11 & 12 Feb 21

Rain(mm) 12 & 13 Feb 21



Precipitation Scale (mm):





Tidal Information

KHAL NO. 10

COX'S BAZAR

HIRAN POINT

	Time	Height		Time	Height		Time	Height
11 Feb 2021	0041	4.14		0453	0.37		0457	0.44
	0724	0.40		1030	2.77		1051	2.53
	1311	3.79		1702	0.27		1657	0.42
	1926	0.50		2251	3.28		2306	2.87
12 Feb 2021	Time	Height		Time	Height		Time	Height
	0116	4.25		0533	0.27		0533	0.35
	0801	0.34		1109	2.91		1126	2.61
	1343	3.91		1741	0.21		1733	0.38
	2002	0.46		2328	3.36		2338	2.88
13 Feb 2021	Time	Height		Time	Height		Time	Height
	0146	4.33		0609	0.21		0605	0.32
	0833	0.31		1145	2.98		1158	2.64
	1413	4.01		1817	0.20		1806	0.39
	2035	0.43		-	-		-	-