



WEATHER FORECAST FOR BN

22 JAN - 25 JAN 2021





WEATHER FORECAST – DHAKA

22.01.2021

Hourly	2 PM	4 PM	8 PM	11 PM
Temp. / Dew Point	23 / 14	23 / 13	20 / 13	18 / 13
Wind	7 km/h WNW	6 km/h W	3 km/h NW	3 km/h NW
Humidity	57%	51%	65%	73%
Chance of Precip	1%	1%	2%	4%
Cloud Cover	59%	2%	5%	1%
Conditions	Sunny	Sunny	Clear	Clear
Sunrise Sunset	06: 42 AM 17: 37 PM			

Conditions

Pressure : 1015 hpa

Visibility : 0.6 km

Ref: <https://www.wunderground.com/weather/bd/dhaka>



WEATHER FORECAST – CHATTOGRAM

22.01.2021

Hourly	2 PM	4 PM	8 PM	11 PM
Temp. / Dew Point	24 / 13	23 / 13	20 / 15	19 / 15
Wind	11 km/h W	10 km/h W	9 km/h WNW	7 km/h NNW
Humidity	51%	51%	70%	77%
Chance of Precip.	1%	1%	1%	3%
Cloud Cover	1%	1%	1%	1%
Conditions	Sunny	Sunny	Clear	Clear
Sunrise	06: 34 AM			
Sunset	17: 34 PM			

Conditions

Pressure : 1014 hpa

Visibility : 2.03. Km

Ref: <https://www.wunderground.com/weather/bd/chittagong>



WEATHER FORECAST – KHULNA

22.01.2021

Hourly	2 PM	4 PM	8 PM	11 PM
Temp. / Dew Point	25 / 9	24 / 10	18 / 12	16 / 12
Wind	10 km/h WNW	10 km/h WNW	5 km/h NNW	3 km/h NNE
Humidity	38%	40%	66%	80%
Chance of Precip.	1%	1%	1%	4%
Cloud Cover	2%	1%	1%	1%
Conditions	Sunny	Sunny	Clear	Clear
Sunrise Sunset	06: 44 AM 17: 42 PM			

Conditions

Pressure : 1015 hpa

Visibility : 2.8 Km

Ref: <https://www.wunderground.com/weather/bd/khulna>



GENERAL WEATHER FORECAST – DHAKA

Description	23 Jan 2021	24 Jan 2021	25 Jan 2021
Temperature (C)	24 °C/ 14 °C	25 °C/ 15 °C	27 °C/ 16 °C
Summary	AM Fog / PM Hazy	AM Fog / PM Hazy	AM Fog / PM Hazy
Sun Rise/Set	6h42m24s/17h38m36s	6h42m12s/17h39m24s	6h41m54s/17h40m06s
Day Length	10h56m12s	10h57m12s	10h58m12s
Moon Rise/ Set	1:06AM 1:48AM	1:46AM 2:41AM	2:31AM 3:36AM
Moon Phase/ illu	Waxing Gibbous, 70%	Waxing Gibbous, 78%	Waxing Gibbous, 86%
Nautical Twilight	05:49,18:29	05:48,18:30	05:48,18:31
Civil Twilight	06:17,18:02	06:16,18:02	06:16,18:03
Humidity	D : 68% N : 79%	D : 69% N : 80%	D : 68% N : 79%
Barometer (mb)	1013	1013	1014
Visibility	Hazy/ Moderate	Hazy/ Moderate	Hazy/ Moderate
Precip Chance	5%	5%	5%
Wind (mph)	7 Km/h WNW	6 Km/h NW	6 Km/h N

Ref: <https://weather.com/weather/5day//BGXX0003:1:BG>



GENERAL WEATHER FORECAST– CHATTOGRAM

Description	23 Jan 2021	24 Jan 2021	25 Jan 2021
Temperature (C)	24 °C/ 14 °C	25 °C/ 14 °C	27 °C/ 16 °C
Summary	AM Fog / PM Hazy	AM Fog / PM Hazy	AM Fog / PM Hazy
Sun Rise/Set	6h34m06s/ 17h35m24s	6h33m54s/ 17h36m12s	6h33m36s/ 17h36m54s
Day Length	11h01m18s	11h02m18s	11h03m18s
Moon Rise/ Set	1:02AM 1:40AM	1:43AM 2:32AM	2:28AM 3:27AM
Moon Phase/ illu	Waxing Gibbous, 70%	Waxing Gibbous, 78%	Waxing Gibbous, 86%
NauticalTwilight	05:42 18:24	05:41, 18:24	05:41, 18:25
Civil Twilight	06:09, 17:58	06:08, 17:59	06:07, 17:59
Humidity	D : 66% N : 88%	D : 68% N : 87%	D : 64% N : 76%
Barometer (mb)	1013	1013	1014
Visibility	Hazy/ Moderate	Hazy/ Moderate	Hazy/ Moderate
Precip Chance	5%	5%	5%
Wind (mph)	10 Km/h WNW	8 Km/h NW	8 Km/h NNW

Ref: <https://weather.com/weather/5day//BGXX0002:1:BG>



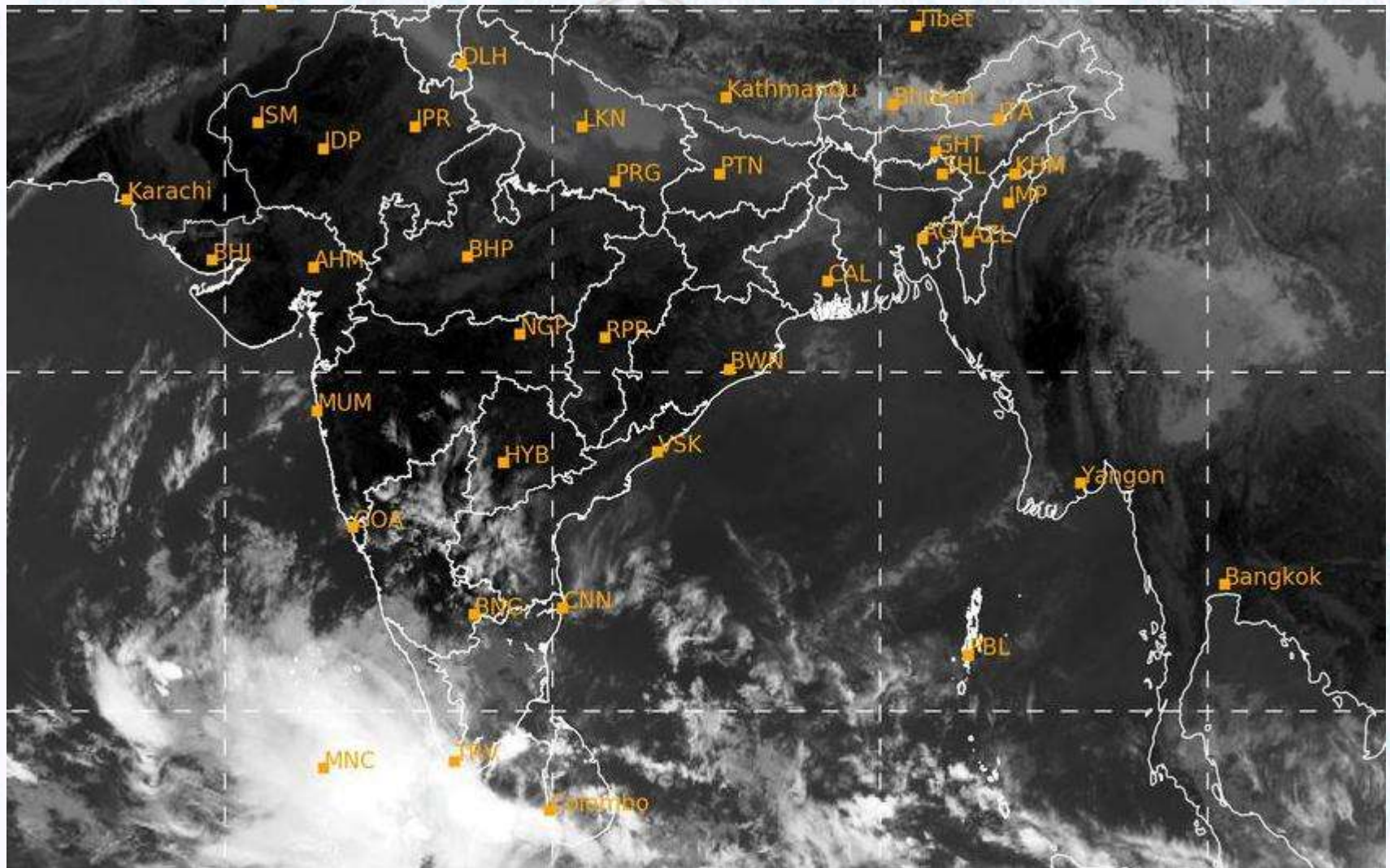
GENERAL WEATHER FORECAST – KHULNA

Description	23 Jan 2021	24 Jan 2021	25 Jan 2021
Temperature(C)	25°C/ 13°C	26°C/ 14°C	27°C/ 16°C
Summary	AM Fog / PM Hazy	AM Fog / PM Hazy	AM Fog / PM Hazy
Sun Rise/Set	6h44m06s/ 17h43m36s	6h43m54s/ 17h44m24s	6h43m36s/ 17h45m06s
Day Length	10h59m30s	10h00m30s	10h01m30s
Moon Rise/Set	1:11AM 1:50AM	1:51AM 2:42AM	2:37AM 3:37AM
Moon Phase/illu	Waxing Gibbous, 70%	Waxing Gibbous, 78%	Waxing Gibbous, 86%
Nautical Twilight	05:51, 18:34	05:50, 18:34	05:50, 18:35
Civil Twilight	06:19, 18:07	06:20, 18:06	06:19, 18:06
Humidity	D : 65% N : 82%	D : 66% N : 82%	D : 67% N : 80%
Barometer (mb)	1013	1013	1013
Visibility	Hazy/ Moderate	Hazy/ Moderate	Hazy/ Moderate
Precip Chance	5%	5%	5%
Wind (mph)	8 km/h NW	6 km/h NW	5 km/h NE

Ref: <https://weather.com/weather/5day//BGXX0005:1:BG>



SATELLITE VIEW OF BAY OF BENGAL

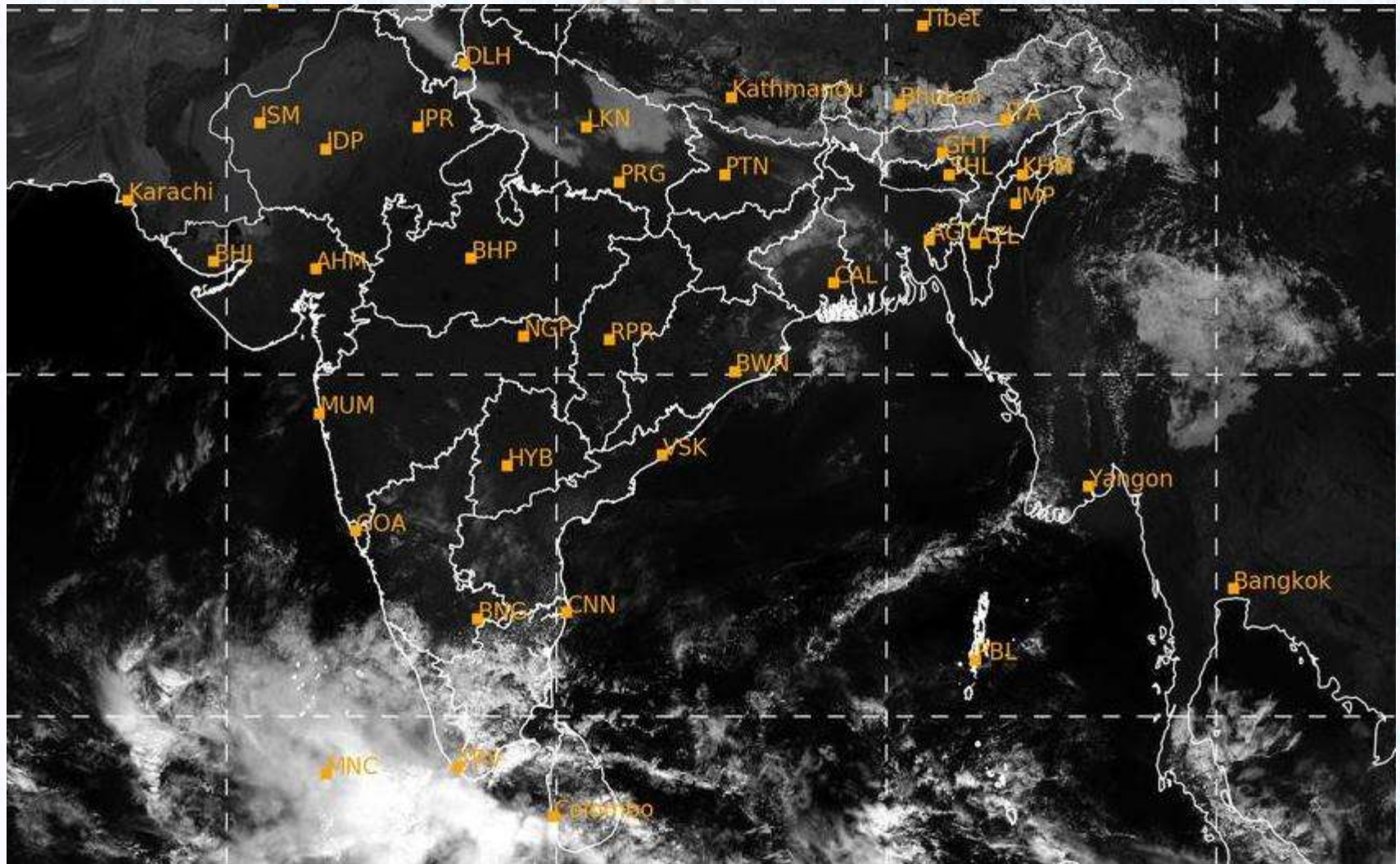


22/01/2021, 11:00 UTC MATSAT-IR

Ref: <http://satellite.imd.gov.in/insat.htm>



SATELLITE VIEW OF BAY OF BENGAL



22/01/2021, 11:00 MATSAT-VIS

Ref: <http://satellite.imd.gov.in/insat.htm>



Fleet Forecast Sea Area C-90 (Valid for 12 Hrs Commencing 1000 UTC of 22.01.2021)

Part One	NO STORM WARNING.	
Part Two	SEASONAL LOW LIES OVER SOUTH BAY.	
Part Three	Weather	TEMPORARY PARTLY CLOUDY OVER AREA C-90.
	Wind	N/NELY, 08-12 KTS.
	Visibility	03-05 KMS, REDUCING TO 1000 M OR LESS IN FOG.
	Outlook	FOR SUBSEQUENT 12 HOURS: LITTLE CHANGE.
	MSL Pressure	AT = 22,0000 UTC. CHATTOGRAM =1014 HPA



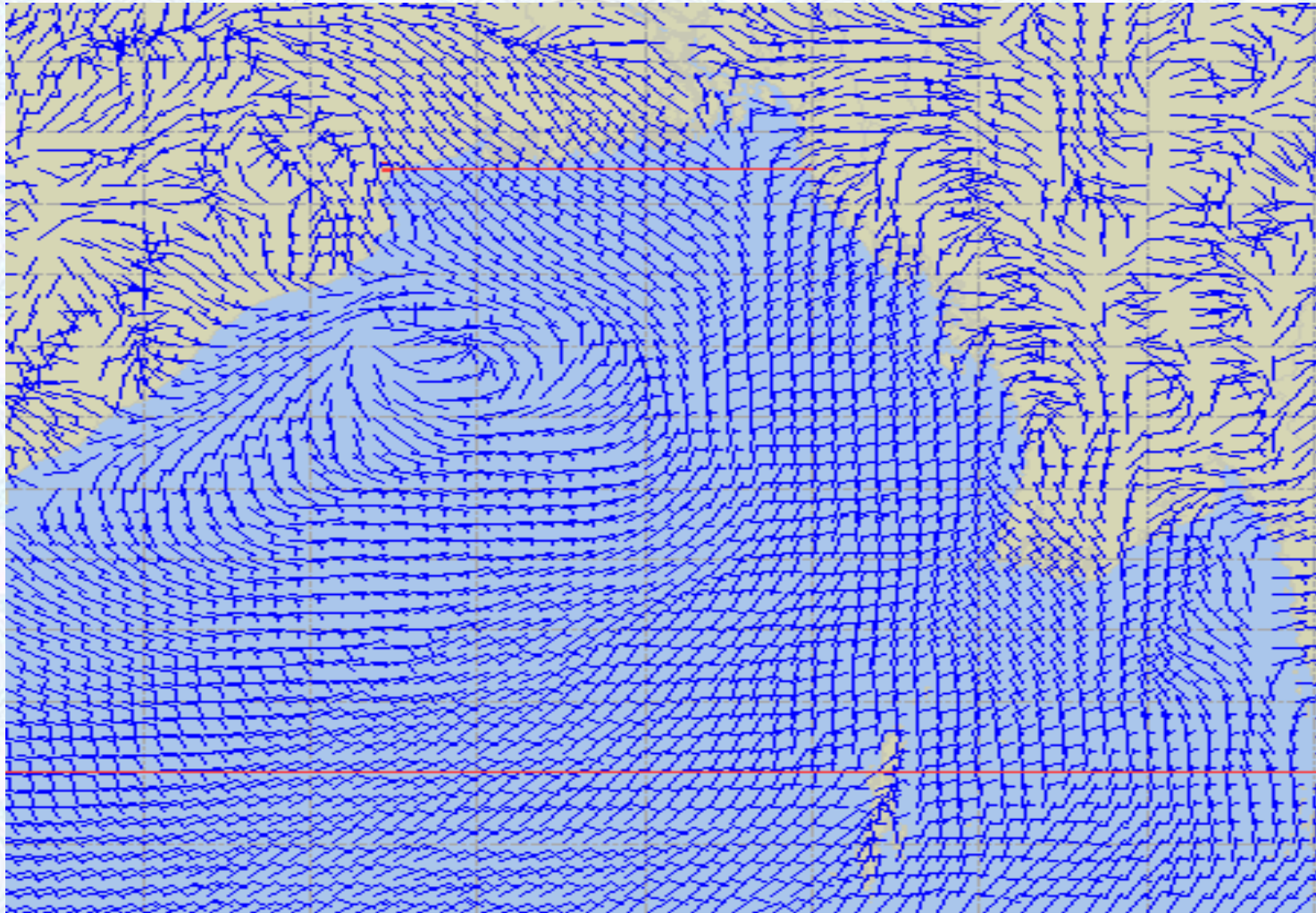
Inland River Port Warning **(VALID TILL 06 PM OF 22.01.2020)**

LIGHT TO MODERATE FOG MAY REDUCE SURFACE VISIBILITY TO 800 M OR LESS AT PLACES OVER THE RIVERBASINS OF THE COUNTRY DURING NEXT 03-04 HRS COMMENCING 09:30 AM OF 22.01.2021 WHEREIN RIVERCRAFTS SHALL PROCEED WITH CAUTION BUT NO SIGNAL IS TO BE HOISTED.

Ref: <http://www.bmd.gov.bd/?/home>



Surface Wind Forecast- 23 Jan - 2021



Legend:



**Calm
Winds**



5 Knots



10 Knots



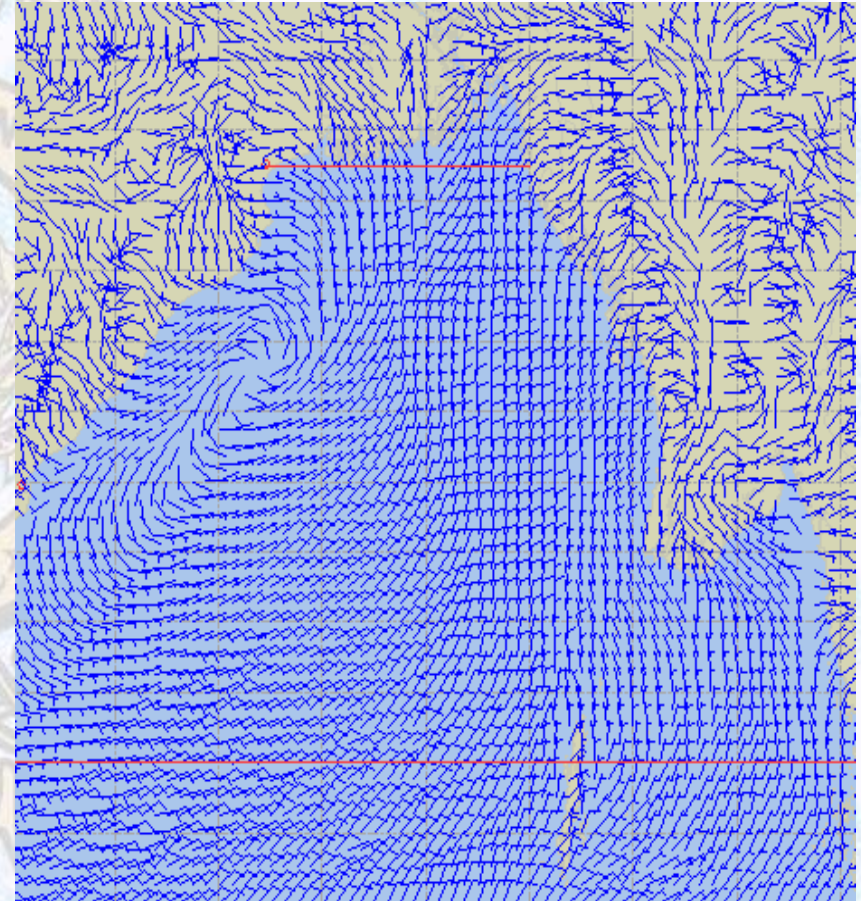
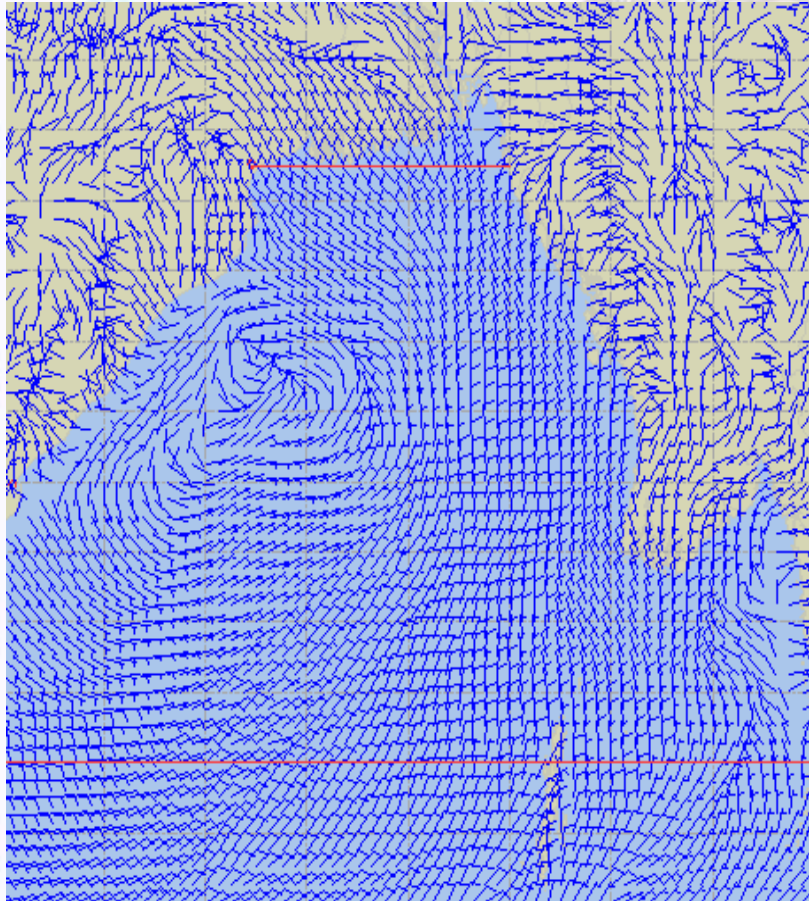
60 Knots



Surface Wind Forecast – 24 & 25 Jan - 2021

24 Jan 21 Sunday

25 Jan 21 Monday



Legend:



Calm
Winds



5 Knots



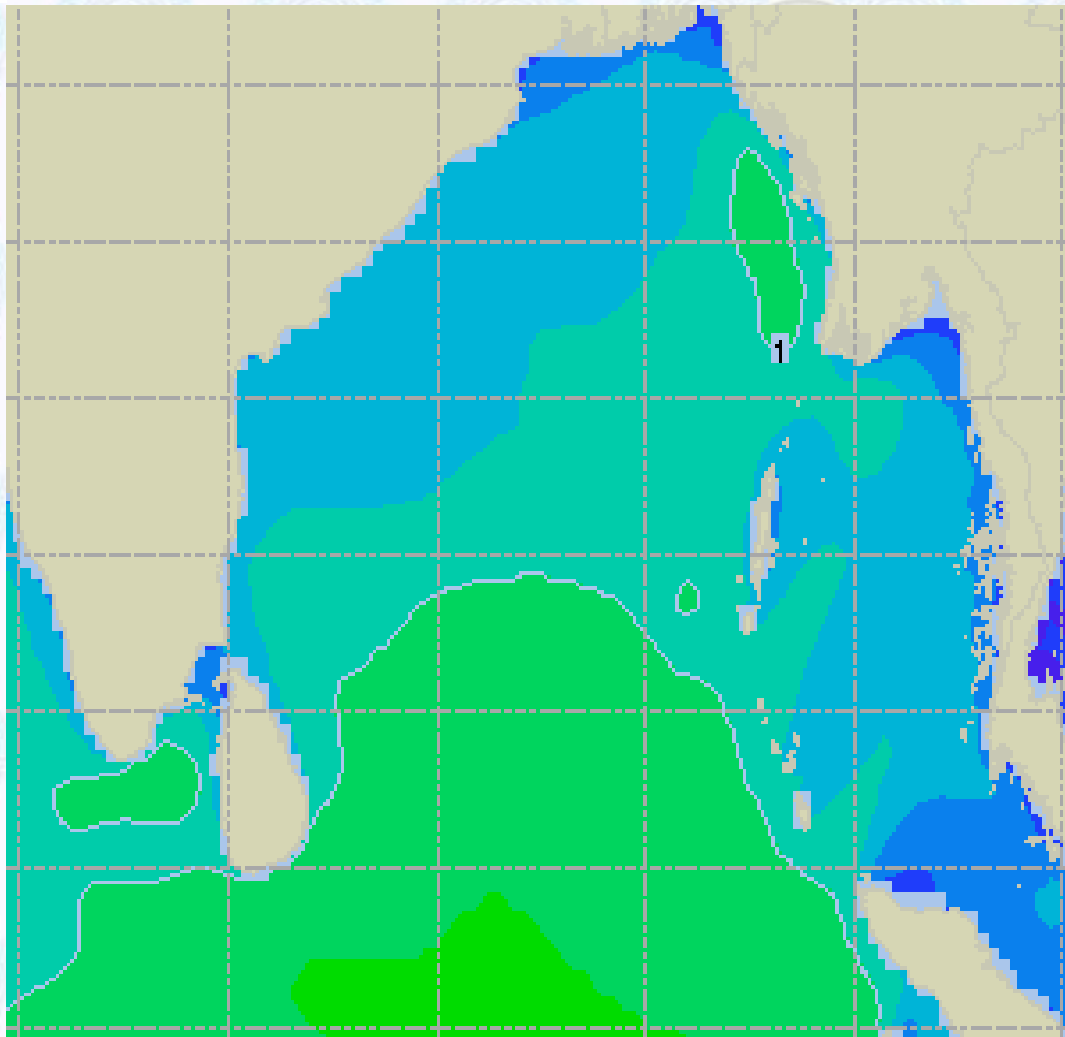
10 Knots



60 Knots



Sea State Forecast – 23 Jan - 2021



Sea State	Ht (m)
0	0-0.1
1	0-0.1
2	0.1-0.5
3	0.5-1.25
4	1.25-2.5
5	2.5-4.0
6	4-6
7	6-9
8	9-14
9	Over 14

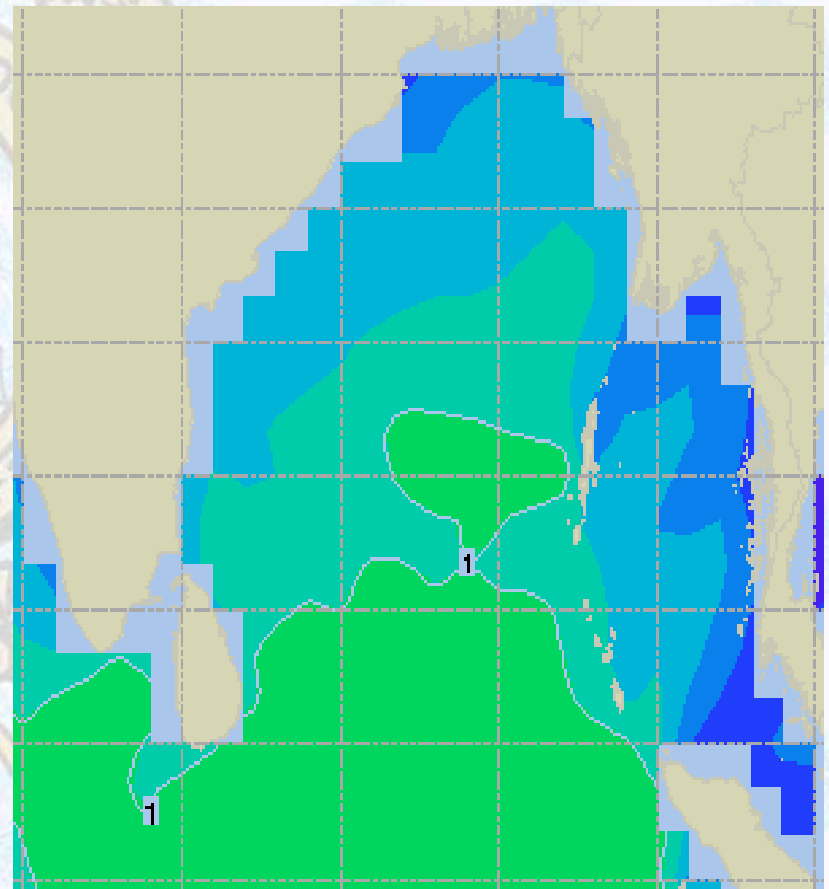
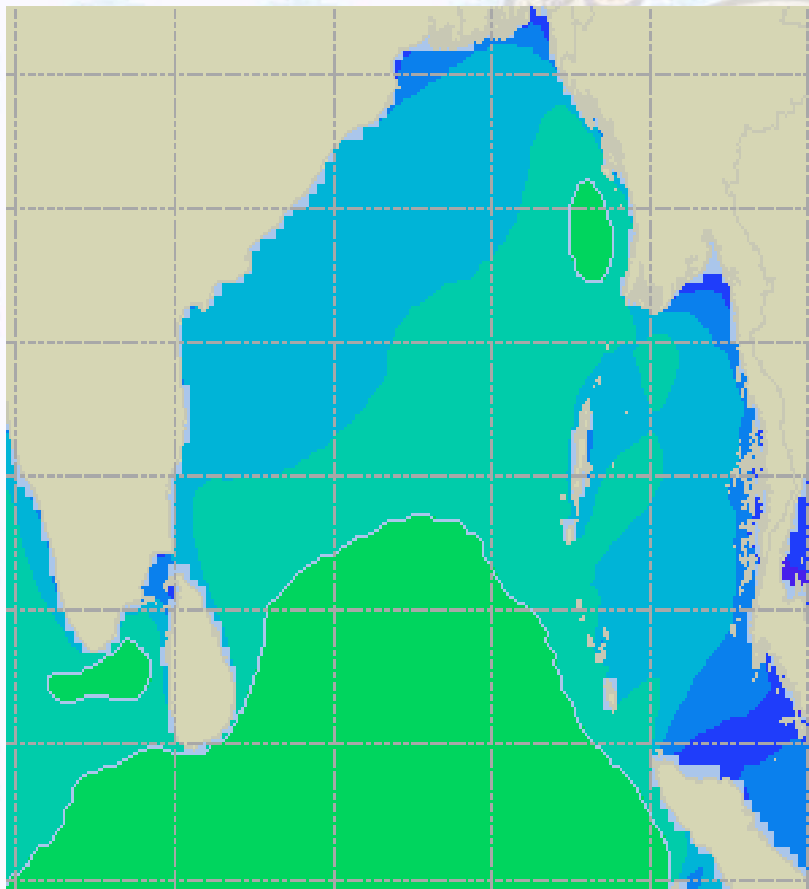




Sea State Forecast – 24 & 25 Jan - 2021

24 Jan 21 Sunday

25 Jan 21 Monday

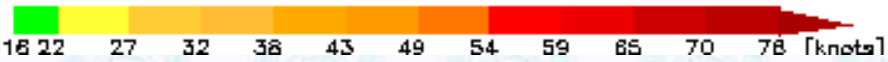
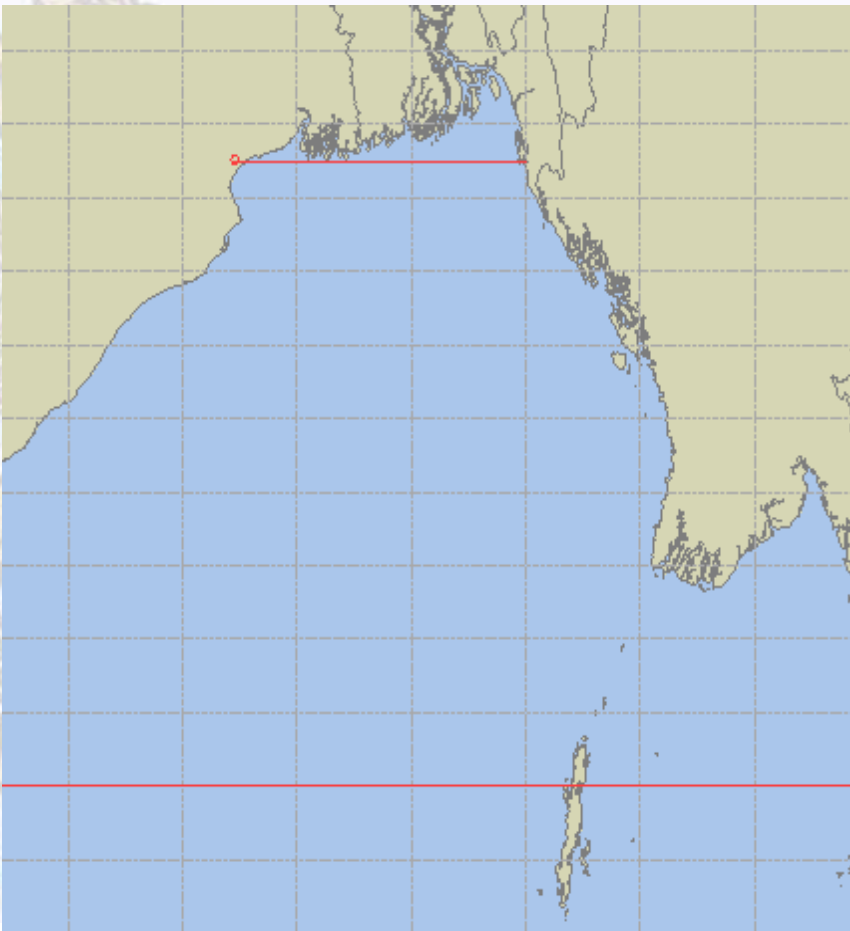
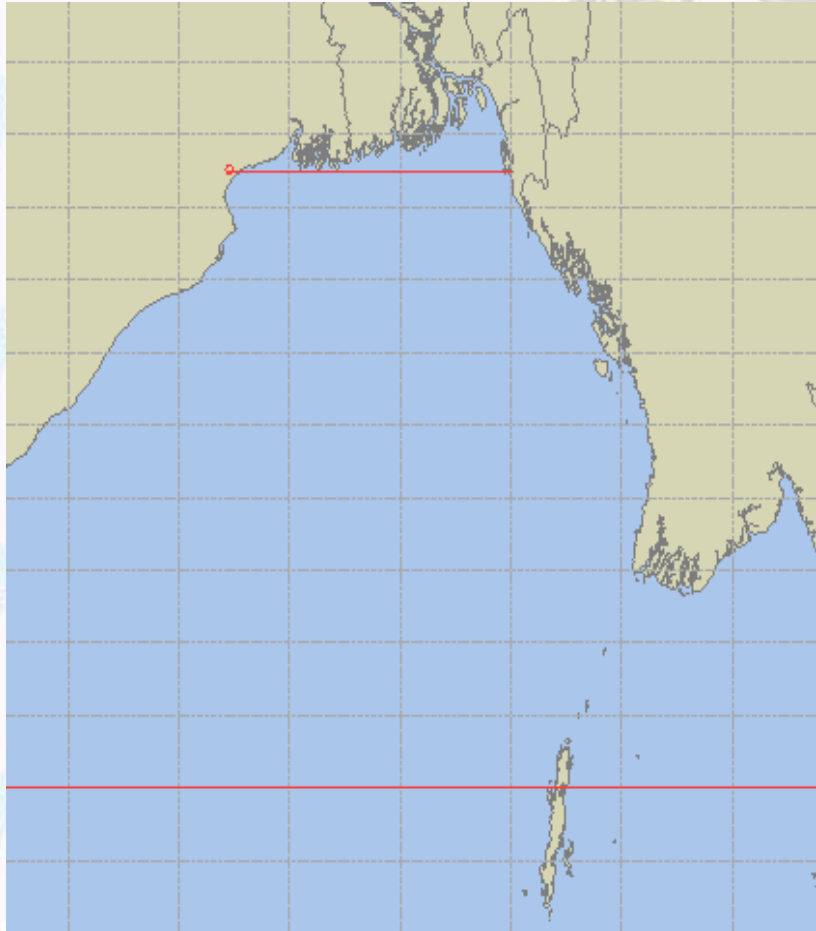




Peak Gusting Possibilities– 23 & 24 Jan 2021

23 Jan 21 Saturday

24 Jan 21 Sunday

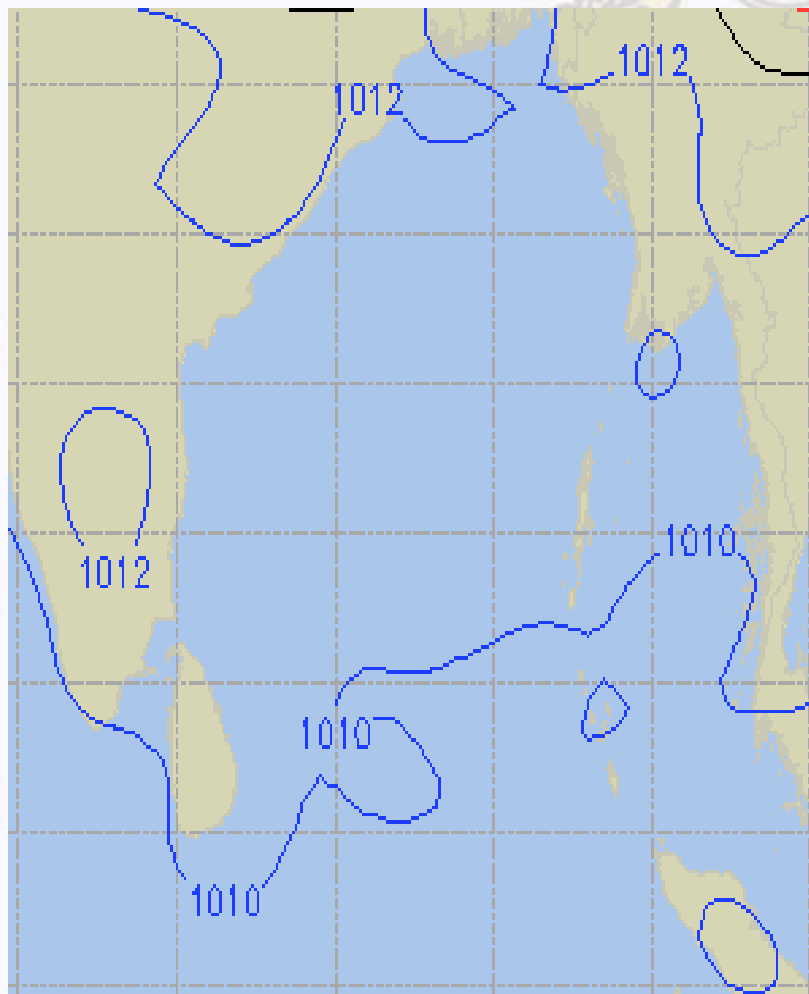


16 22 27 32 38 43 49 54 59 65 70 78 [knots]

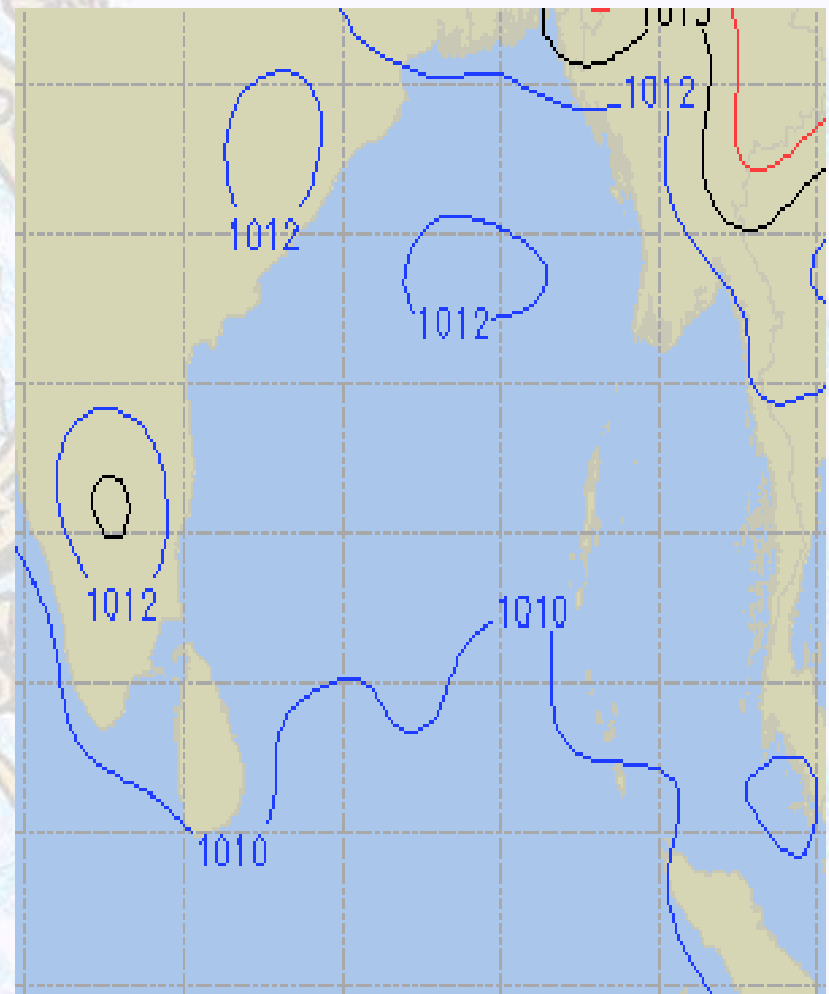


Surface Pressure forecast – 23 & 24 Jan 2021

23 Jan 21 Saturday



24 Jan 21 Sunday

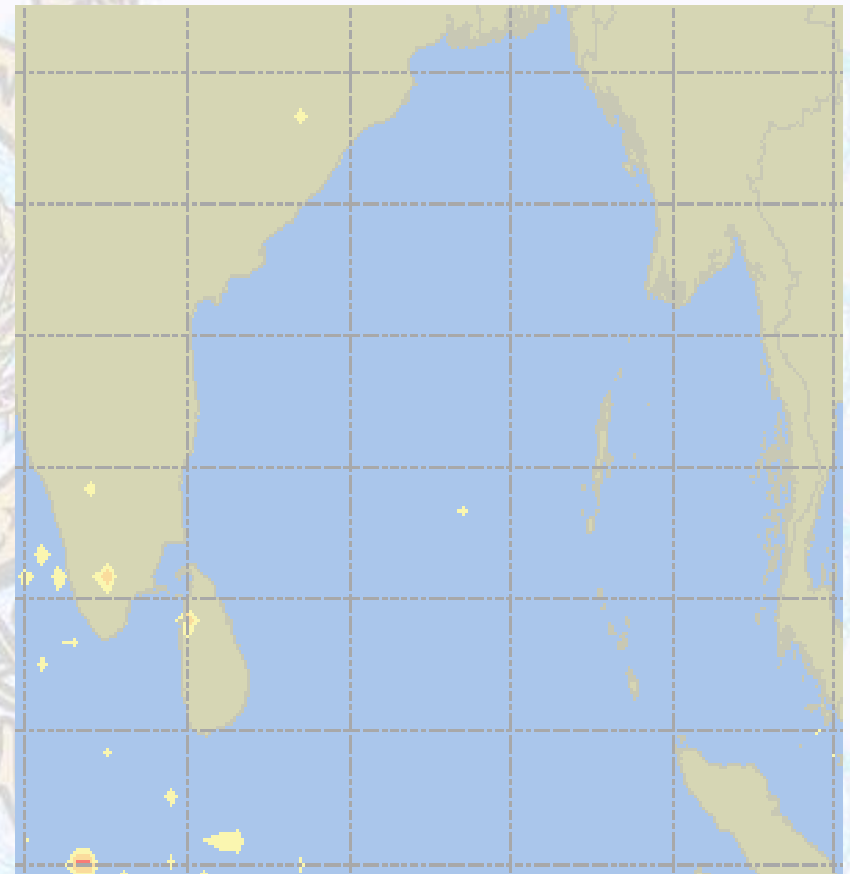
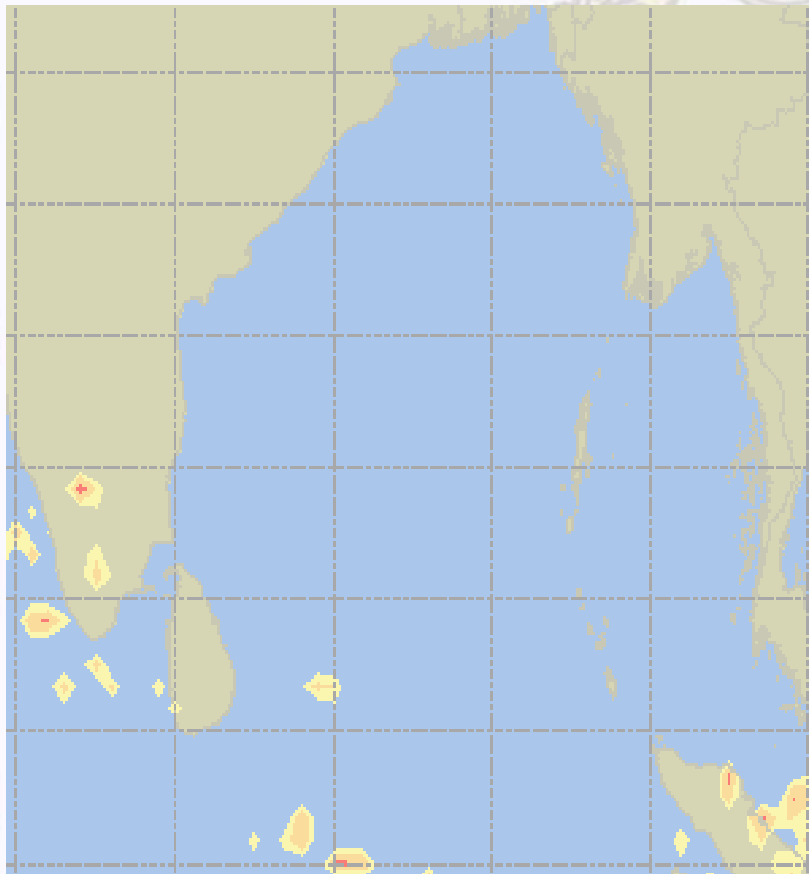




Visibility at Sea Forecast – 23 & 24 Jan 2021

23 Jan 21 Saturday

24 Jan 21 Sunday



Visibility Scale:



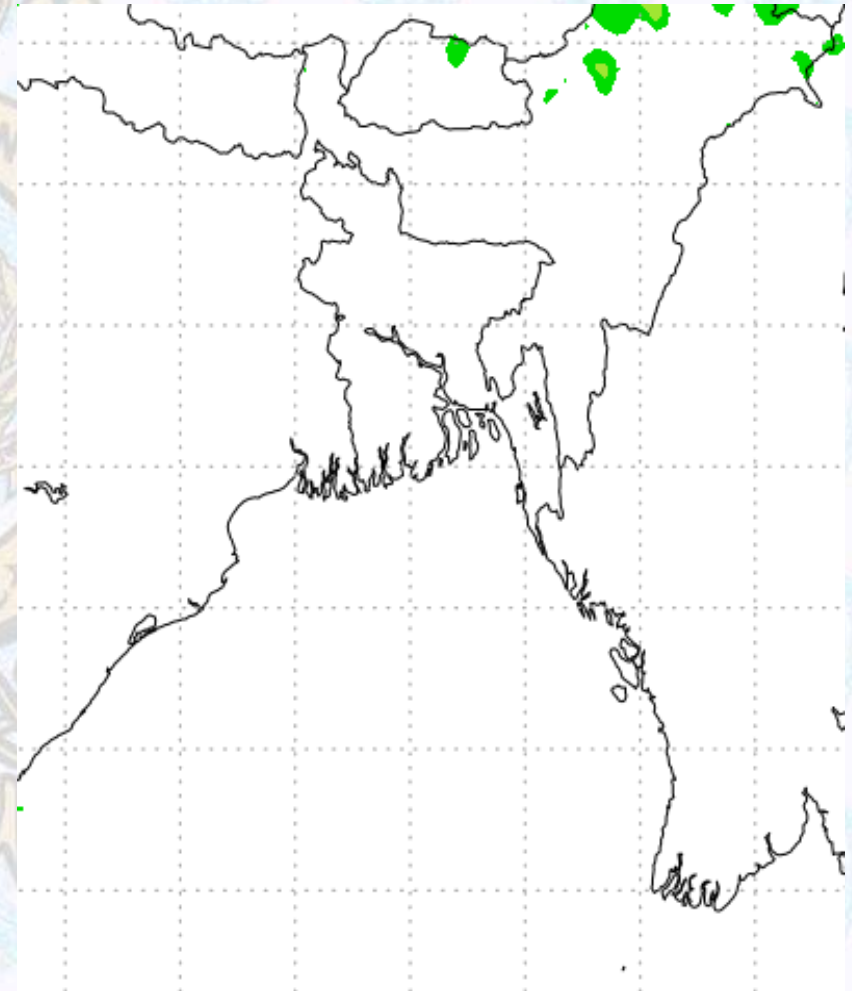
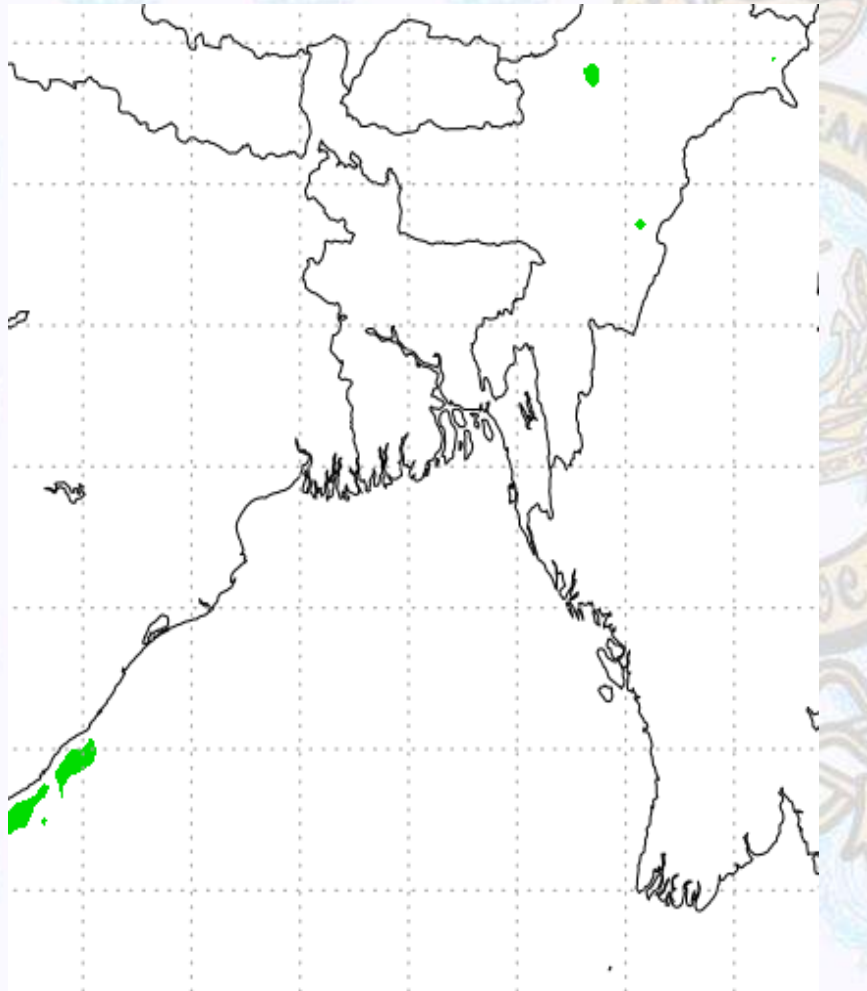
Ref (Slide 12-18): <http://www.weatheronline.co.uk/marine/weather?LEVEL>



Precipitation

Rain(mm) 23 & 24 Jan 2021

Rain(mm) 24 & 25 Jan 2021



Precipitation Scale (mm):





Tidal Information

KHAL NO. 10

COX'S BAZAR

HIRAN POINT

23 Jan 2021	Time	Height		Time	Height		Time	Height
	0246	1.39		0544	2.09		0533	1.93
	0830	2.91		1221	1.01		1208	1.08
	1449	1.21		1853	2.29		1904	2.19
	2120	3.40		-	-		-	-
24 Jan 2021	Time	Height		Time	Height		Time	Height
	0408	1.28		0124	1.09		0143	1.27
	0953	2.92		0703	2.07		0720	1.91
	1558	1.16		1336	0.95		1326	1.03
	2222	3.55		2001	2.46		2016	2.31
25 Jan 2021	Time	Height		Time	Height		Time	Height
	0511	1.10		0235	0.97		0253	1.12
	1101	3.07		0817	2.17		0839	2.01
	1658	1.05		1440	0.83		1430	0.91
	2313	3.73		2055	2.68		2108	2.45