



# **WEATHER FORECAST FOR BN**

***11 JAN - 14 JAN 2021***



# WEATHER FORECAST – DHAKA

## 11.01.2021

| Hourly            | 2 PM                   | 4 PM     | 8 PM       | 11 PM    |
|-------------------|------------------------|----------|------------|----------|
| Temp. / Dew Point | 27 / 17                | 27 / 18  | 24 / 18    | 23 / 18  |
| Wind              | 7 km/h W               | 7 km/h W | 5 km/h WSW | 3 km/h W |
| Humidity          | 55%                    | 59%      | 62%        | 76%      |
| Chance of Precip  | 1%                     | 1%       | 2%         | 1%       |
| Cloud Cover       | 1%                     | 1%       | 1%         | 1%       |
| Conditions        | Sunny                  | Sunny    | Clear      | Clear    |
| Sunrise<br>Sunset | 06: 43 AM<br>17: 29 PM |          |            |          |

### Conditions

Pressure : 1012 hpa

Visibility : 1.21 km

Ref: <https://www.wunderground.com/weather/bd/dhaka>



# WEATHER FORECAST – CHATTOGRAM

## 11.01.2021

| Hourly            | 2 PM       | 4 PM       | 8 PM      | 11 PM    |
|-------------------|------------|------------|-----------|----------|
| Temp. / Dew Point | 27 / 18    | 26 / 17    | 24 / 19   | 23 / 19  |
| Wind              | 8 km/h WNW | 7 km/h WNW | 6 km/h NW | 4 km/h N |
| Humidity          | 50%        | 60%        | 74%       | 81%      |
| Chance of Precip. | 1%         | 1%         | 2%        | 3%       |
| Cloud Cover       | 7%         | 5%         | 1%        | 1%       |
| Conditions        | Sunny      | Sunny      | Clear     | Clear    |
| Sunrise           | 06: 34 AM  |            |           |          |
| Sunset            | 17: 26 PM  |            |           |          |

### Conditions

Pressure : 1013 hpa

Visibility : 5:40 Km

Ref: <https://www.wunderground.com/weather/bd/chittagong>



# WEATHER FORECAST – KHULNA

## 11.01.2021

| Hourly            | 2 PM                   | 4 PM       | 8 PM      | 11 PM    |
|-------------------|------------------------|------------|-----------|----------|
| Temp. / Dew Point | 30 / 17                | 30 / 17    | 24 / 16   | 23 / 18  |
| Wind              | 8 km/h WNW             | 8 km/h WNW | 3 km/h SW | 5 km/h S |
| Humidity          | 51%                    | 48%        | 62%       | 79%      |
| Chance of Precip. | 1%                     | 2%         | 2%        | 3%       |
| Cloud Cover       | 4%                     | 3%         | 1%        | 1%       |
| Conditions        | Sunny                  | Sunny      | Clear     | Clear    |
| Sunrise<br>Sunset | 06: 44 AM<br>17: 35 PM |            |           |          |

### Conditions

Pressure : 1014 hpa

Visibility : 9.05 Km

Ref: <https://www.wunderground.com/weather/bd/khulna>



# GENERAL WEATHER FORECAST – DHAKA

| Description              | 12 Jan 2021         | 13 Jan 2021        | 14 Jan 2021         |
|--------------------------|---------------------|--------------------|---------------------|
| <b>Temperature (C)</b>   | 27 °C / 16 °C       | 25 °C / 14 °C      | 26 °C / 14 °C       |
| <b>Summary</b>           | AM Fog / PM Sunny   | AM Fog / PM Sunny  | AM Fog / PM Sunny   |
| <b>Sun Rise/Set</b>      | 6h43m30s/17h29m48s  | 6h43m36s/17h31m18s | 6h43m36s/17h32m06s  |
| <b>Day Length</b>        | 10h46m30s           | 10h47m42s          | 10h48m30s           |
| <b>Moon Rise/ Set</b>    | 5:46AM 4:37PM       | 6:46AM 5:40PM      | 7:40AM 6:41PM       |
| <b>Moon Phase/ illu</b>  | Waning Crescent, 0% | New Moon, 0%       | Waxing Crescent, 3% |
| <b>Nautical Twilight</b> | 05:54, 18:11        | 05:54, 18:10       | 05:53, 18:10        |
| <b>Civil Twilight</b>    | 06:21, 17:42        | 06:22, 17:42       | 06:22, 17:43        |
| <b>Humidity</b>          | D : 65%    N : 70%  | D : 60%    N : 70% | D : 63%    N : 78%  |
| <b>Barometer (mb)</b>    | 1011                | 1011               | 1010                |
| <b>Visibility</b>        | Moderate            | Moderate           | Moderate            |
| <b>Precip Chance</b>     | 5%                  | 5%                 | 7%                  |
| <b>Wind (mph)</b>        | 5 Km/h    WSW       | 8 Km/h    WSW      | 8 Km/h    WSW       |

Ref: <https://weather.com/weather/5day//BGXX0003:1:BG>



# GENERAL WEATHER FORECAST– CHATTOGRAM

| Description             | 12 Jan 2021         | 13 Jan 2021        | 14 Jan 2021         |
|-------------------------|---------------------|--------------------|---------------------|
| <b>Temperature (C)</b>  | 27 °C/ 18 °C        | 26 °C/ 17 °C       | 26 °C/ 18 °C        |
| <b>Summary</b>          | AM Fog / PM Sunny   | AM Fog / PM Sunny  | AM Fog / PM Sunny   |
| <b>Sun Rise/Set</b>     | 6h34m54s/17h27m42s  | 6h35m00s/17h28m24s | 6h35m00s/17h29m12s  |
| <b>Day Length</b>       | 10h52m12s           | 10h53m24s          | 10h54m12s           |
| <b>Moon Rise/ Set</b>   | 5:37AM 4:34PM       | 6:37AM 5:37PM      | 7:31AM 6:38PM       |
| <b>Moon Phase/ illu</b> | Waning Crescent, 0% | New Moon, 0%       | Waxing Crescent, 3% |
| <b>NauticalTwilight</b> | 05:43 18:09         | 05:42 18:08        | 05:42 18:08         |
| <b>Civil Twilight</b>   | 06:11, 17:40        | 06:12, 17:41       | 06:12, 17:41        |
| <b>Humidity</b>         | D : 60% N : 78%     | D : 68% N : 81%    | D : 65% N : 85%     |
| <b>Barometer (mb)</b>   | 1013                | 1012               | 1011                |
| <b>Visibility</b>       | Moderate            | Moderate           | Moderate            |
| <b>Precip Chance</b>    | 5%                  | 7%                 | 7%                  |
| <b>Wind (mph)</b>       | 6 Km/h WNW          | 7 Km/h WNW         | 8 Km/h WNW          |

Ref: <https://weather.com/weather/5day//BGXX0002:1:BG>



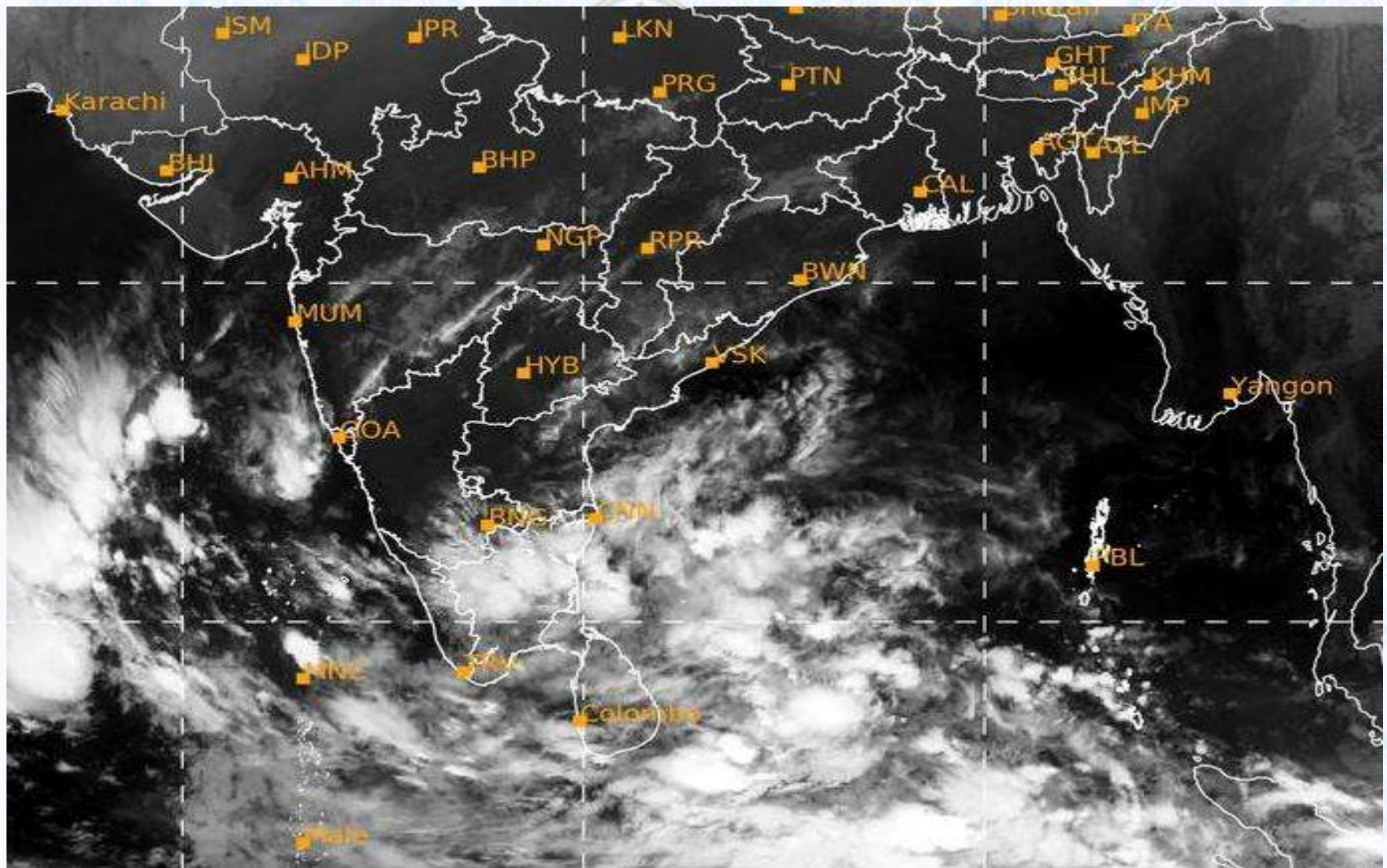
# GENERAL WEATHER FORECAST – KHULNA

| Description              | 12 Jan 2021         | 13 Jan 2021        | 14 Jan 2021         |
|--------------------------|---------------------|--------------------|---------------------|
| <b>Temperature(C)</b>    | 28°C/ 16°C          | 25°C/ 13°C         | 25°C/ 13°C          |
| <b>Summary</b>           | AM Fog / PM Sunny   | AM Fog / PM Sunny  | AM Fog / PM Sunny   |
| <b>Sun Rise/Set</b>      | 6h45m00s/17h35m54s  | 6h45m12s/17h36m36s | 6h45m06s/17h37m24s  |
| <b>Day Length</b>        | 10h50m54s           | 10h51m24s          | 10h52m18s           |
| <b>Moon Rise/Set</b>     | 5:47AM 4:43PM       | 6:47AM 5:45PM      | 7:42AM 6:47PM       |
| <b>Moon Phase/illu</b>   | Waning Crescent, 0% | New Moon, 0%       | Waxing Crescent, 3% |
| <b>Nautical Twilight</b> | 05:53, 18:16        | 05:52, 18:16       | 05:52, 18:15        |
| <b>Civil Twilight</b>    | 06:21, 17:47        | 06:21, 17:46       | 06:20, 17:46        |
| <b>Humidity</b>          | D : 60%    N : 78%  | D : 68%    N : 83% | D : 60%    N : 82%  |
| <b>Barometer (mb)</b>    | 1012                | 1013               | 1012                |
| <b>Visibility</b>        | Moderate            | Moderate           | Moderate            |
| <b>Precip Chance</b>     | 5%                  | 5%                 | 5%                  |
| <b>Wind (mph)</b>        | 7 km/h W            | 7 km/h W           | 7 km/h W            |

Ref: <https://weather.com/weather/5day//BGXX0005:1:BG>



# SATELLITE VIEW OF BAY OF BENGAL



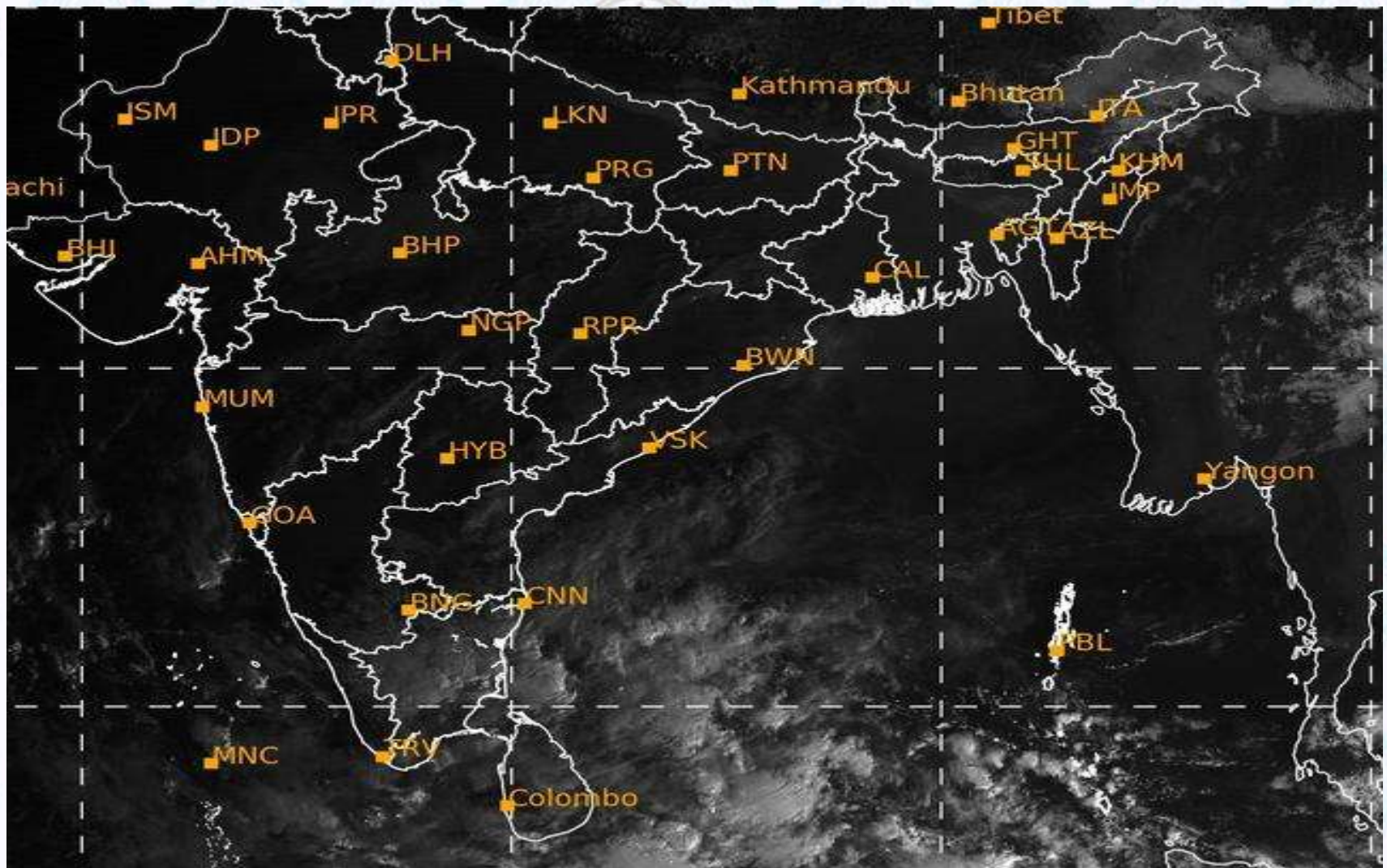
11/01/2021, 11:00 UTC MATSAT-IR

Ref: <http://satellite.imd.gov.in/insat.htm>





# SATELLITE VIEW OF BAY OF BENGAL



11/01/2021, 11:00 MATSAT-VIS

Ref: <http://satellite.imd.gov.in/insat.htm>



# Fleet Forecast Sea Area C-90 ( Valid for 12 Hrs Commencing 1000 UTC of 11.01.2021)

|                   |                                   |  |
|-------------------|-----------------------------------|--|
| <b>Part One</b>   | NO STORM WARNING.                 |  |
| <b>Part Two</b>   | SEASONAL LOW LIES OVER SOUTH BAY. |  |
| <b>Part Three</b> | Weather                           | TEMPORARY PARTLY CLOUDY OVER AREA C-90.            |
|                   | Wind                              | NORTH/NORTH-WESTERLY, 08-12 KTS.                   |
|                   | Visibility                        | 03-05 KMS, REDUCING TO 1000 M OR LESS IN MIST/FOG. |
|                   | Outlook                           | FOR SUBSEQUENT 12 HOURS: LITTLE CHANGE.            |
|                   | MSL<br>Pressure                   | AT = 11,0000 UTC.<br>CHATTOGRAM =1011 HPA          |



# Inland River Port Warning (VALID TILL 06 PM OF 11.01.2020)

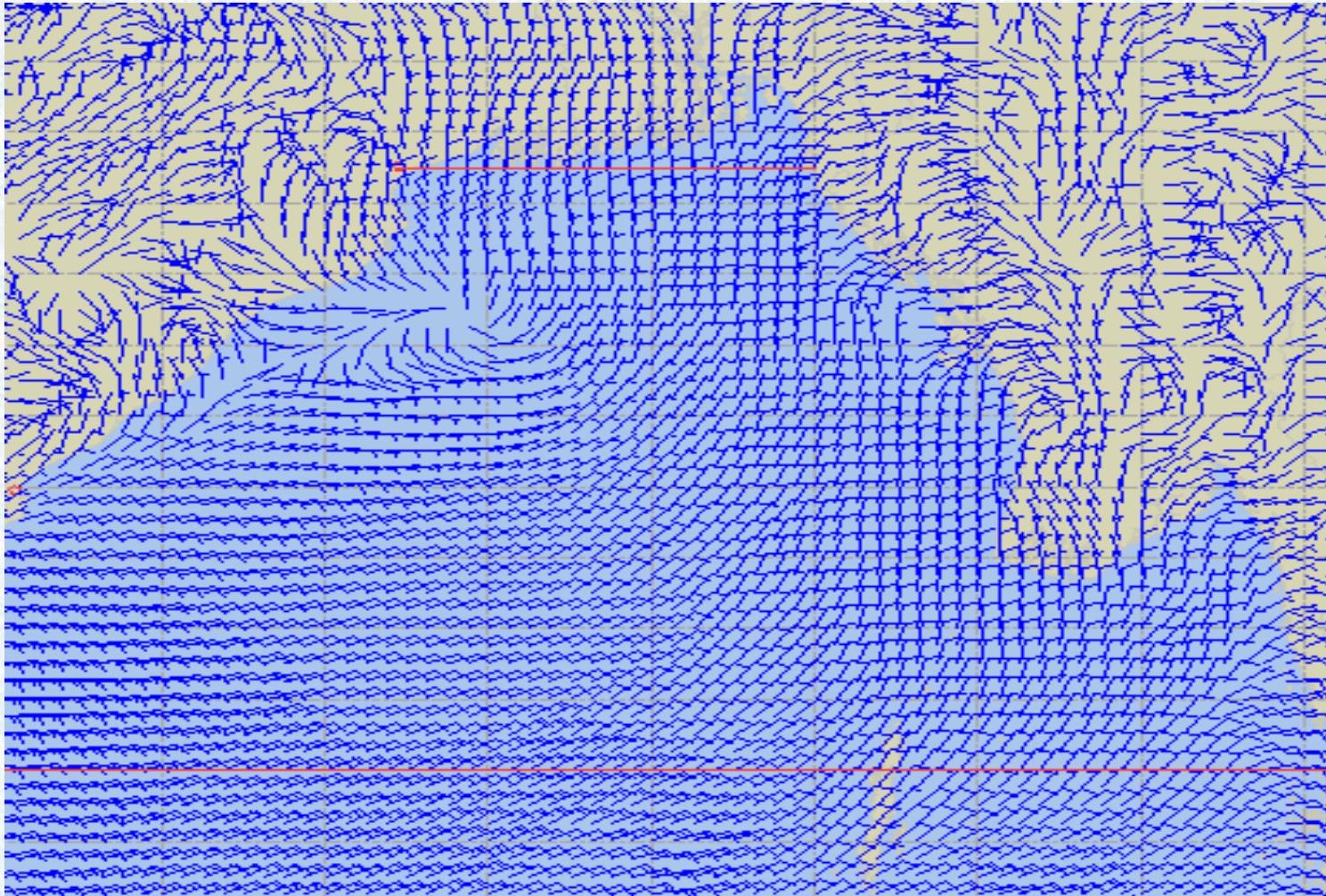
THERE IS NO INLAND RIVERPORT WARNING AND NO SIGNAL IS TO BE HOISTED.



Ref: <http://www.bmd.gov.bd/?/home>



# Surface Wind Forecast- 12 Jan - 2021



**Legend:**



**Calm  
Winds**



**5 Knots**



**10 Knots**



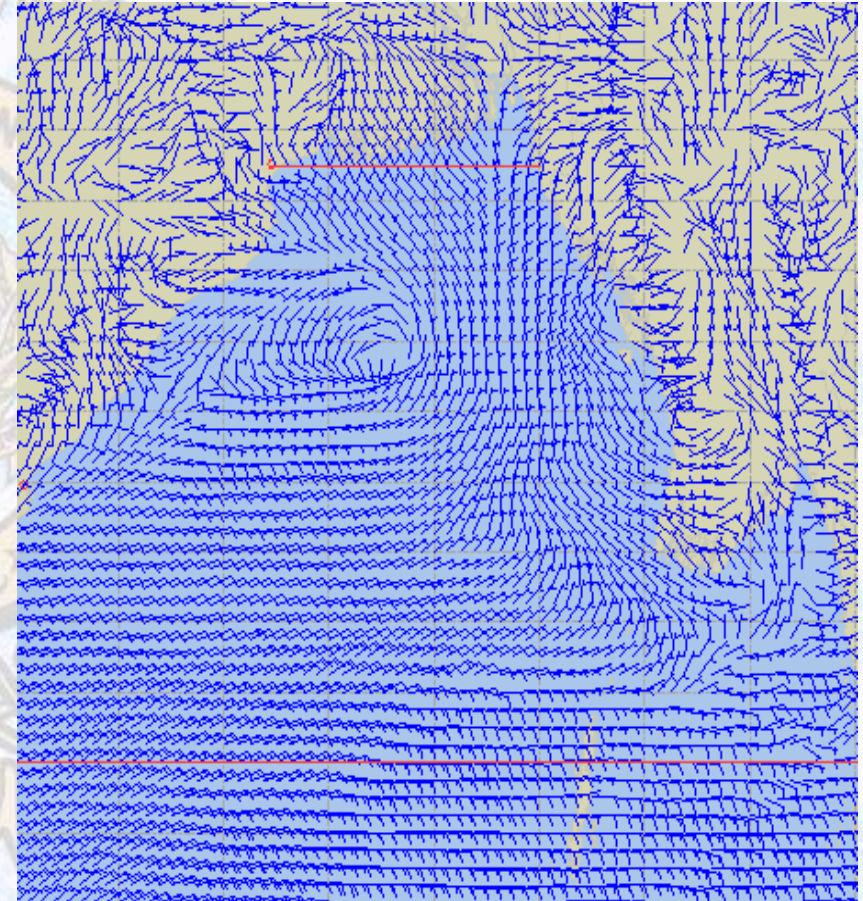
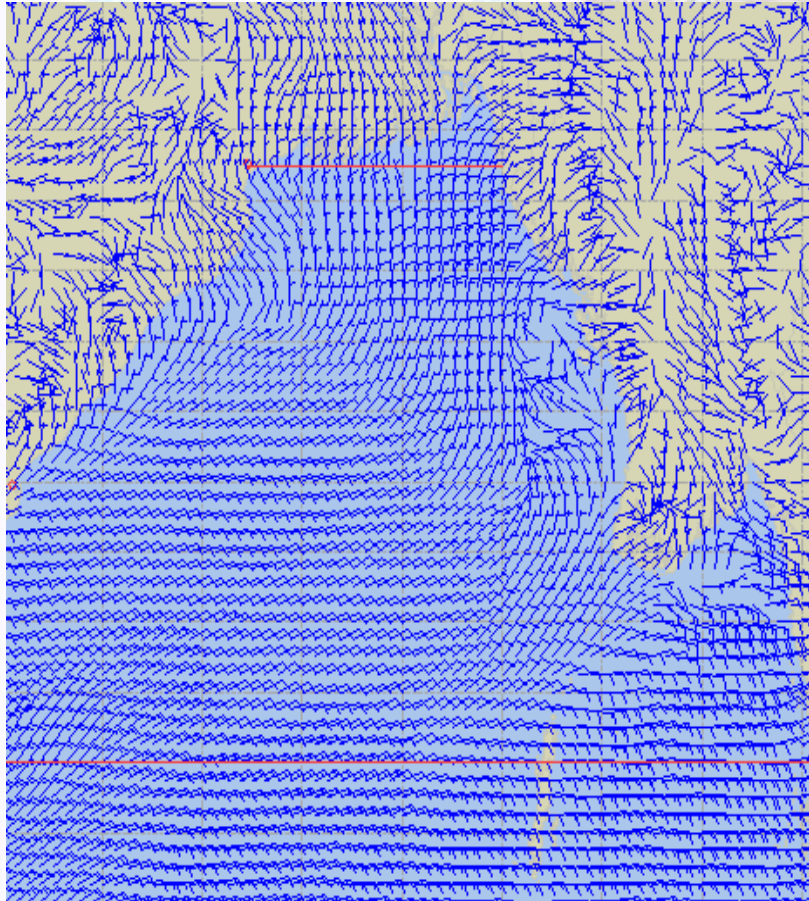
**60 Knots**



# Surface Wind Forecast – 13 & 14 Jan - 2021

13 Jan 21 Wednesday

14 Jan 21 Thursday



**Legend:**



Calm  
Winds



5 Knots



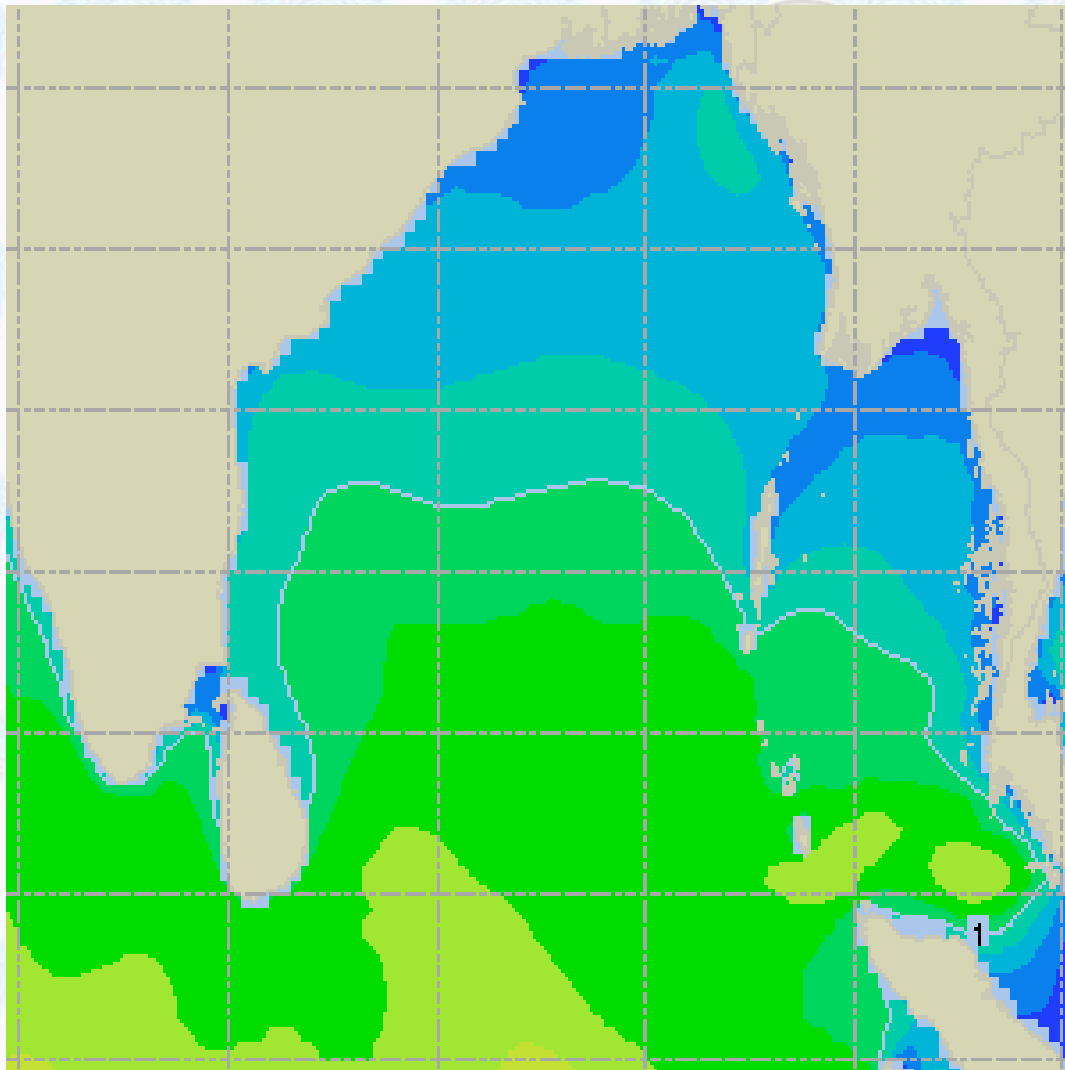
10 Knots



60 Knots



# Sea State Forecast – 12 Jan - 2021



| Sea State | Ht (m)   |
|-----------|----------|
| 0         | 0-0.1    |
| 1         | 0-0.1    |
| 2         | 0.1-0.5  |
| 3         | 0.5-1.25 |
| 4         | 1.25-2.5 |
| 5         | 2.5-4.0  |
| 6         | 4-6      |
| 7         | 6-9      |
| 8         | 9-14     |
| 9         | Over 14  |

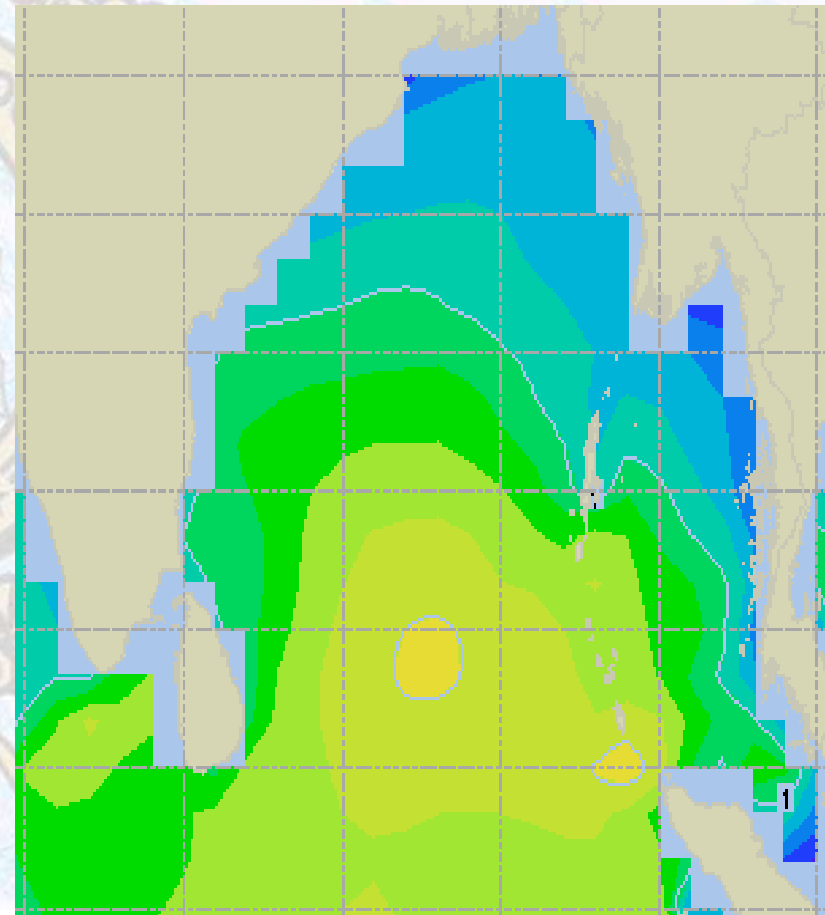
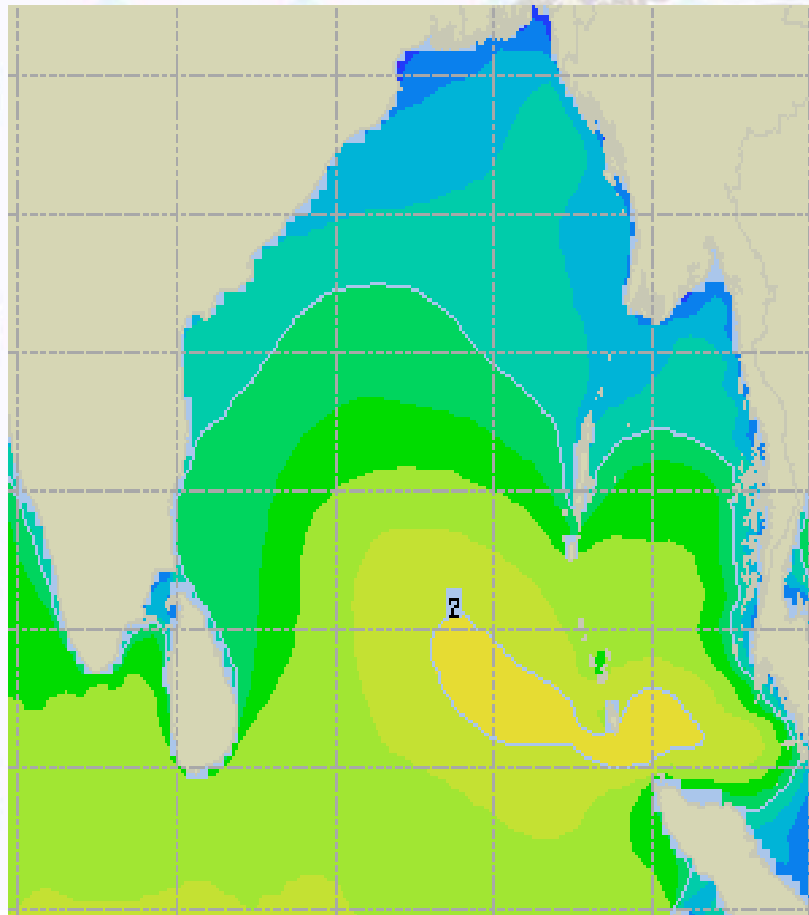




# Sea State Forecast – 13 & 14 Jan - 2021

13 Jan 21 Wednesday

14 Jan 21 Thursday

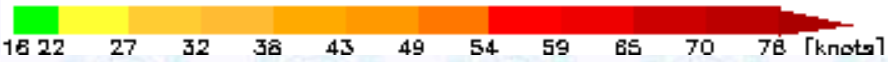
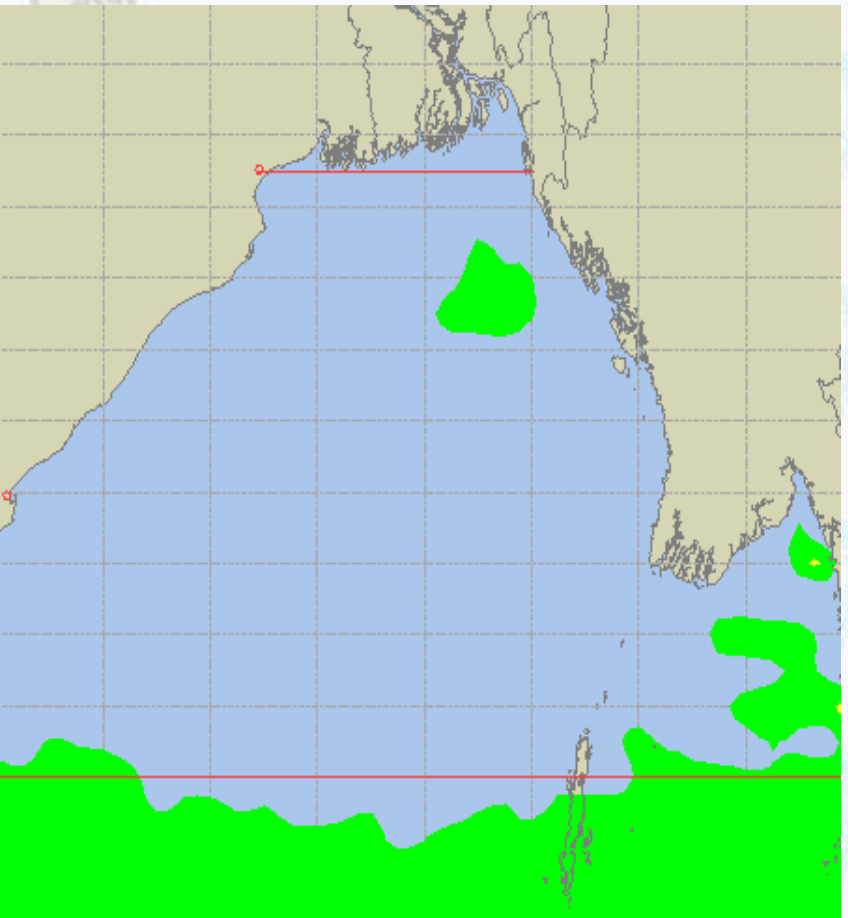
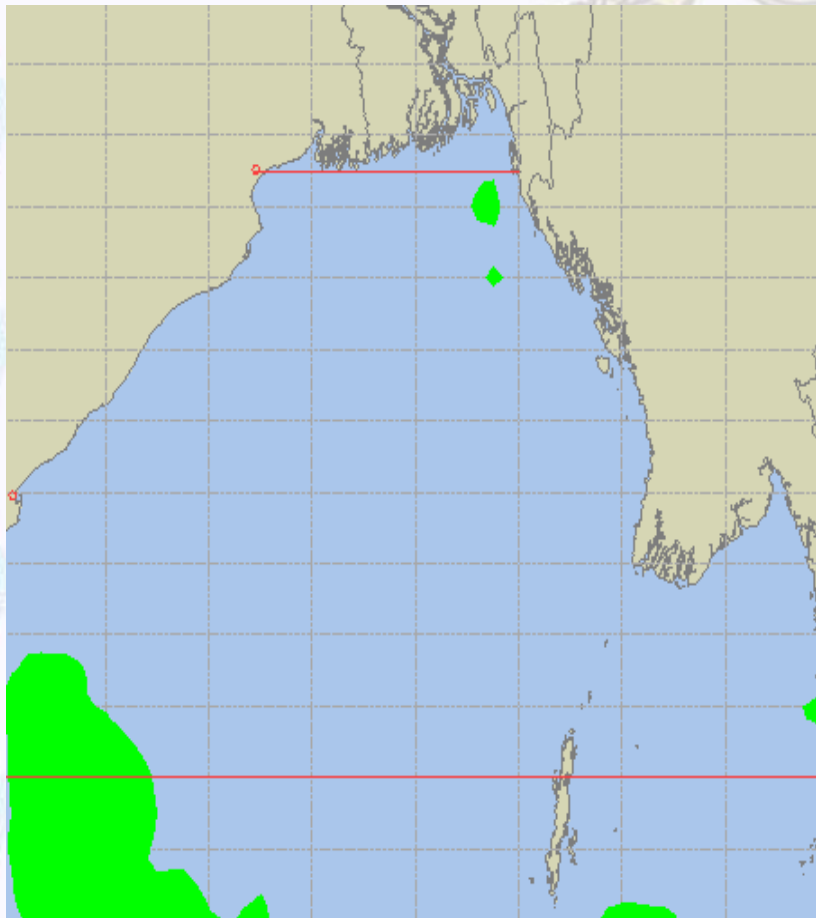




# Peak Gusting Possibilities– 12 & 13 Jan 2021

## 12 Jan 21 Tuesday

## 13 Jan 21 Wednesday



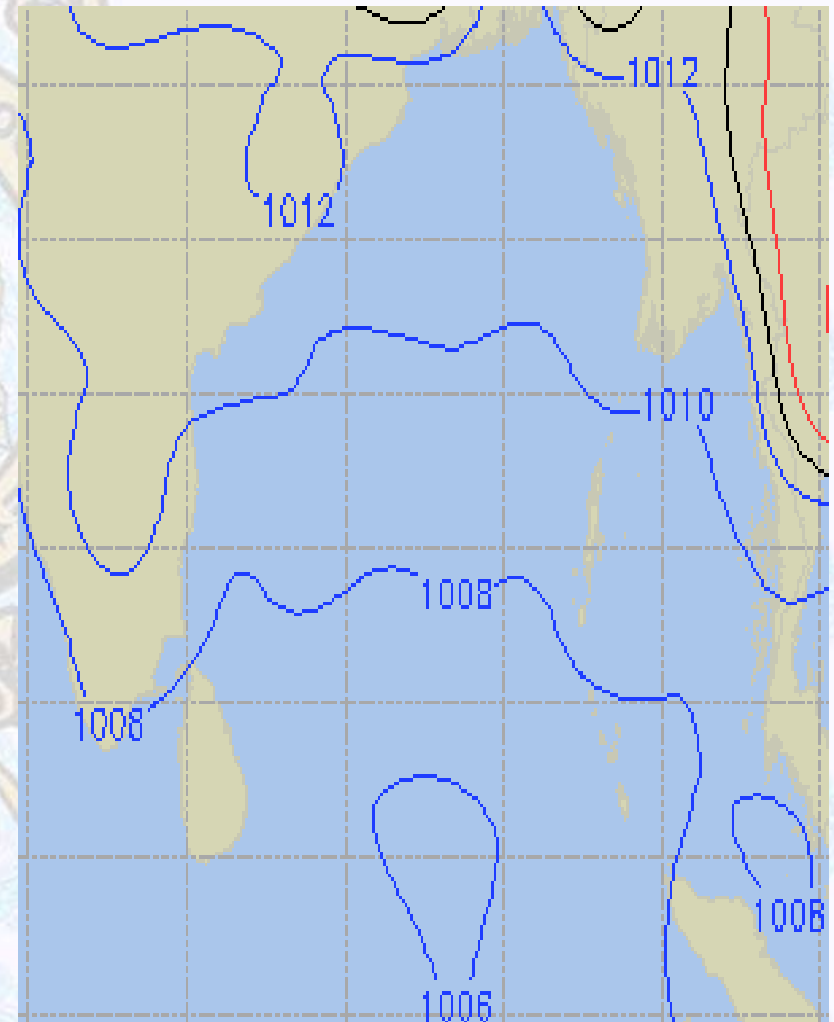
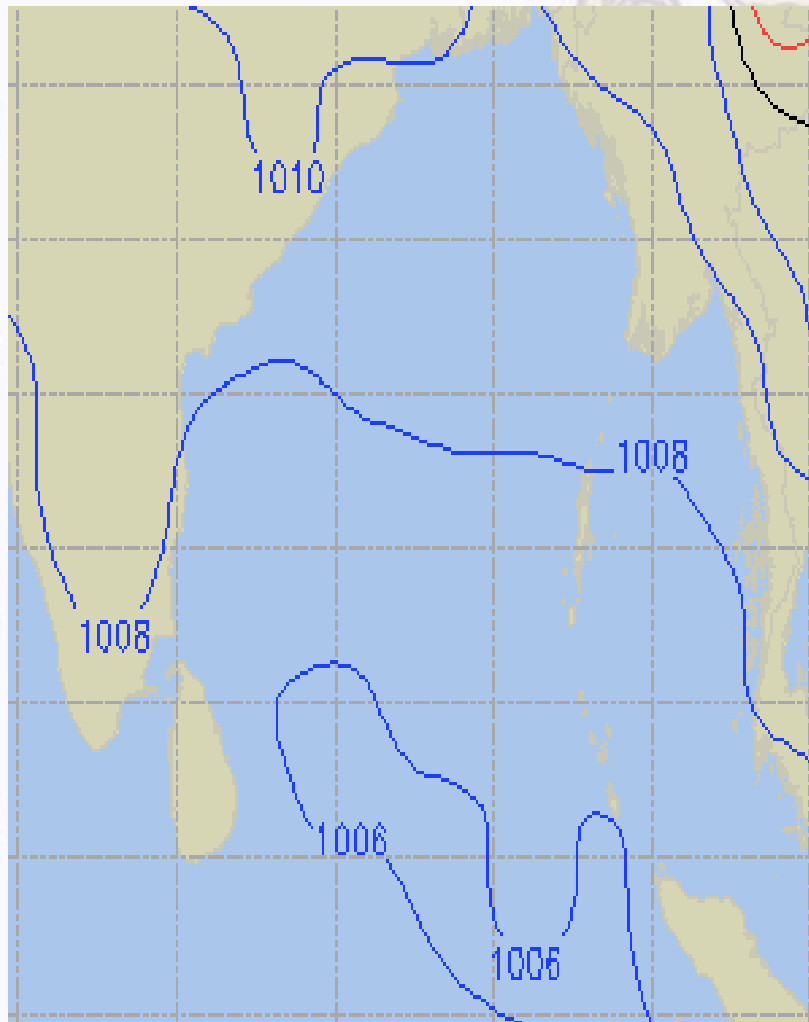




# Surface Pressure forecast – 12 & 13 Jan 2021

12 Jan 21 Tuesday

13 Jan 21 Wednesday

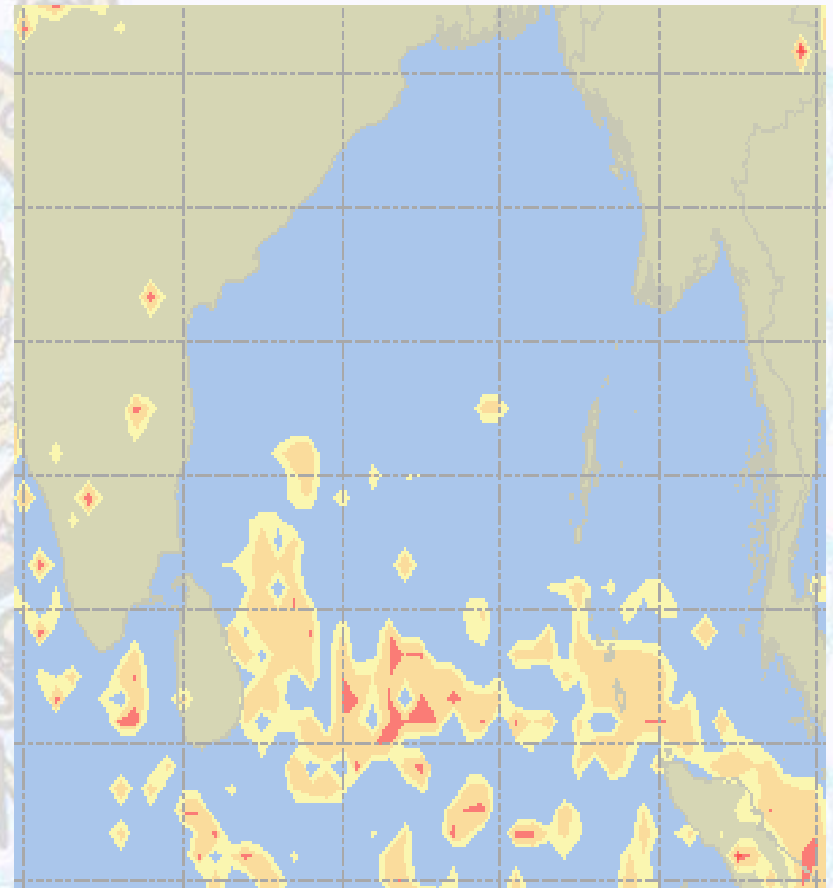
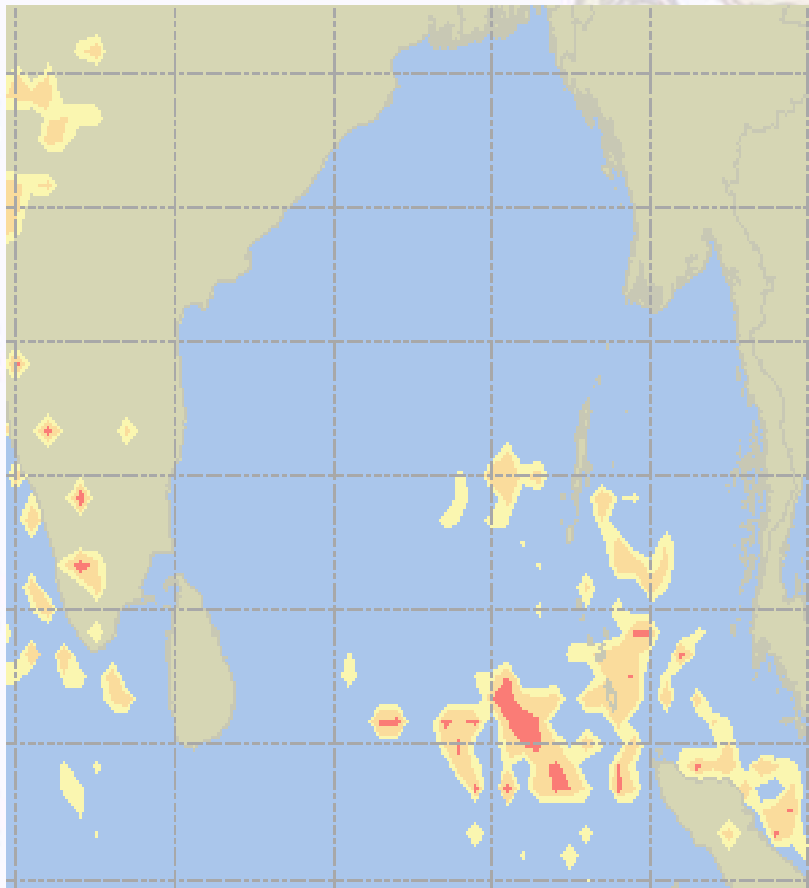




# Visibility at Sea Forecast – 12 & 13 Jan 2021

12 Jan 21 Tuesday

13 Jan 21 Wednesday



**Visibility Scale:**



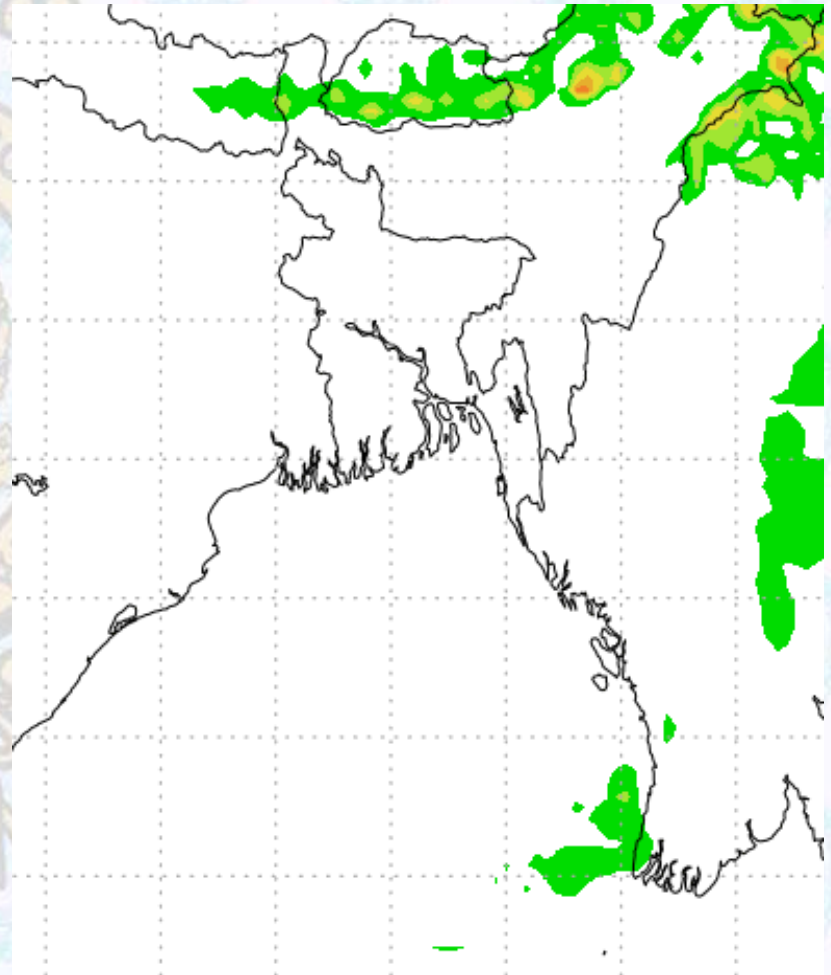
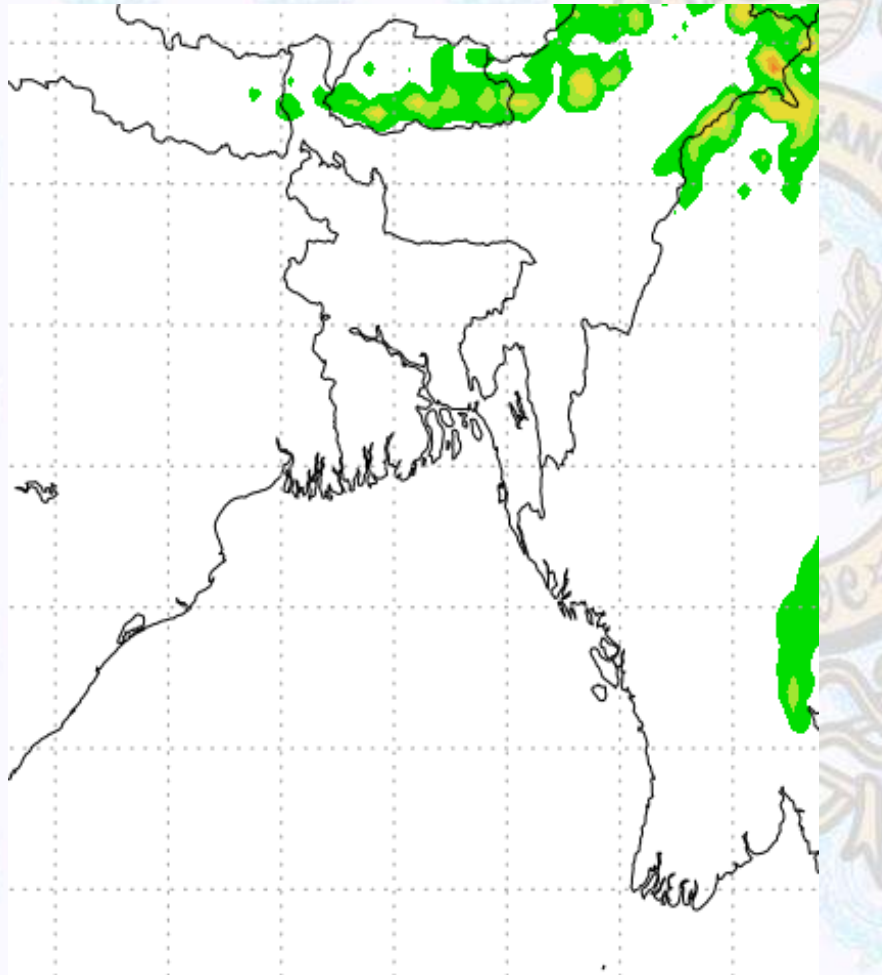
Ref (Slide 12-18): <http://www.weatheronline.co.uk/marine/weather?LEVEL>



# Precipitation

Rain(mm) 12 & 13 Jan 2021

Rain(mm) 13 & 14 Jan 2021



Precipitation Scale (mm):





# Tidal Information

## KHAL NO. 10

## COX'S BAZAR

## HIRAN POINT

|                    |             |               |  |             |               |  |             |               |
|--------------------|-------------|---------------|--|-------------|---------------|--|-------------|---------------|
| <b>12 Jan 2021</b> | <b>Time</b> | <b>Height</b> |  | <b>Time</b> | <b>Height</b> |  | <b>Time</b> | <b>Height</b> |
|                    | 0000        | 4.27          |  | 0415        | 0.52          |  | 0419        | 0.68          |
|                    | 0645        | 0.51          |  | 0953        | 2.77          |  | 1012        | 2.48          |
|                    | 1232        | 3.77          |  | 1625        | 0.39          |  | 1618        | 0.52          |
|                    | 1848        | 0.50          |  | 2219        | 3.35          |  | 2233        | 2.93          |
| <b>13 Jan 2021</b> | <b>Time</b> | <b>Height</b> |  | <b>Time</b> | <b>Height</b> |  | <b>Time</b> | <b>Height</b> |
|                    | 0044        | 4.35          |  | 0504        | 0.43          |  | 0506        | 0.57          |
|                    | 0731        | 0.45          |  | 1040        | 2.88          |  | 1058        | 2.55          |
|                    | 1314        | 3.86          |  | 1712        | 0.33          |  | 1704        | 0.48          |
|                    | 1931        | 0.47          |  | 2304        | 3.43          |  | 2316        | 2.97          |
| <b>14 Jan 2021</b> | <b>Time</b> | <b>Height</b> |  | <b>Time</b> | <b>Height</b> |  | <b>Time</b> | <b>Height</b> |
|                    | 0123        | 4.41          |  | 0547        | 0.38          |  | 0548        | 0.50          |
|                    | 0813        | 0.41          |  | 1123        | 2.94          |  | 1138        | 2.59          |
|                    | 1352        | 3.47          |  | 1755        | 0.31          |  | 1744        | 0.48          |
|                    | 2011        | 0.47          |  | 2346        | 3.45          |  | 2354        | 2.97          |