



WEATHER FORECAST FOR BN

28 - 31 DEC 2020



WEATHER FORECAST – DHAKA

28.12.2020

Hourly	2 PM	4 PM	8 PM	11 PM
Temp. / Dew Point	24 / 15	24 / 14	20 / 14	18 / 14
Wind	8 km/h NW	9 km/h WNW	4 km/h WNW	4 km/h NW
Humidity	56%	54%	69%	77%
Chance of Precip	1%	1%	3%	5%
Cloud Cover	15%	3%	1%	1%
Conditions	Sunny	Sunny	Clear	Clear
Sunrise Sunset	06: 39 AM 17: 20 PM			

Conditions

Pressure : 1015 hpa

Visibility : 3.22 km

Ref: <https://www.wunderground.com/weather/bd/dhaka>



WEATHER FORECAST – CHATTOGRAM

28.12.2020

Hourly	2 PM	4 PM	8 PM	11 PM
Temp. / Dew Point	25 / 14	24 / 14	20 / 16	18 / 16
Wind	8 km/h WNW	8 km/h WNW	6 km/h NW	7 km/h NNW
Humidity	51%	54%	78%	87%
Chance of Precip.	1%	1%	3%	5%
Cloud Cover	1%	1%	1%	1%
Conditions	Sunny	Sunny	Clear	Clear
Sunrise	06: 31 AM			
Sunset	17: 18 PM			

Conditions

Pressure : 1014 hpa

Visibility : 4:22 Km

Ref: <https://www.wunderground.com/weather/bd/chittagong>



WEATHER FORECAST – KHULNA

28.12.2020

Hourly	2 PM	4 PM	8 PM	11 PM
Temp. / Dew Point	25 / 10	24 / 10	18 / 11	15 / 11
Wind	8 km/h NW	8 km/h NW	4 km/h NNW	3 km/h NNW
Humidity	39%	41%	67%	79%
Chance of Precip.	1%	1%	2%	4%
Cloud Cover	1%	1%	1%	1%
Conditions	Sunny	Sunny	Clear	Clear
Sunrise Sunset	06: 41 AM 17: 26 PM			

Conditions

Pressure : 1015 hpa

Visibility : 5.05 Km

Ref: <https://www.wunderground.com/weather/bd/khulna>



GENERAL WEATHER FORECAST – DHAKA

Description	29 Dec 2020	30 Dec 2020	31 Dec 2020
Temperature (C)	25 °C / 14 °C	26 °C / 14 °C	25 °C / 14 °C
Summary	AM Fog / PM Sunny	AM Fog / PM Sunny	AM Fog / PM Sunny
Sun Rise/Set	6h40m12s/17h21m06s	6h40m24s/17h21m36s	6h40m48s/17h22m12s
Day Length	10h40m54s	10h41m12s	10h41m24s
Moon Rise/ Set	4:40 PM 5:47 AM	5:33 PM 6:42 AM	6:29 PM 7:36 AM
Moon Phase/ illu	Full Moon, 99%	Full Moon, 99%	Waning Gibbous, 98%
NauticalTwilight	05:47,18:14	05:47,18:14	05:47,18:15
Civil Twilight	06:15,17:45	06:15,17:46	06:16,17:47
Humidity	D : 66% N : 78%	D : 64% N : 78%	D : 65% N : 78%
Barometer (mb)	1013	1013	1013
Visibility	Moderate	Moderate	Moderate
Precip Chance	5%	5%	5%
Wind (mph)	9 Km/h NW	10 Km/h NW	8 Km/h NW

Ref: <https://weather.com/weather/5day//BGXX0003:1:BG>



GENERAL WEATHER FORECAST– CHATTOGRAM

Description	29 Dec 2020	30 Dec 2020	31 Dec 2020
Temperature (C)	26 °C/ 14 °C	26 °C/ 13 °C	26 °C/ 13 °C
Summary	AM Fog / PM Sunny	AM Fog / PM Sunny	AM Fog / PM Sunny
Sun Rise/Set	6h31m18s/17h18m30s	6h31m30s/17h19m00s	6h32m00s/17h19m30s
Day Length	10h47m12s	10h47m30s	10h47m30s
Moon Rise/ Set	4:37 PM 5:38 AM	5:30 PM 6:32 AM	6:26 PM 7:26 AM
Moon Phase/ illu	Full Moon, 99%	Full Moon, 99%	Waning Gibbous, 98%
NauticalTwilight	05:38 18:10	05:39 18:11	05:39 18:11
Civil Twilight	06:06, 17:42	06:07, 17:43	06:07, 17:44
Humidity	D : 64% N : 86%	D : 65% N : 88%	D : 67% N : 89%
Barometer (mb)	1012	1013	1014
Visibility	Moderate	Moderate	Moderate
Precip Chance	5%	5%	5%
Wind (mph)	9 Km/h NNW	8 Km/h NNW	8 Km/h NW

Ref: <https://weather.com/weather/5day//BGXX0002:1:BG>



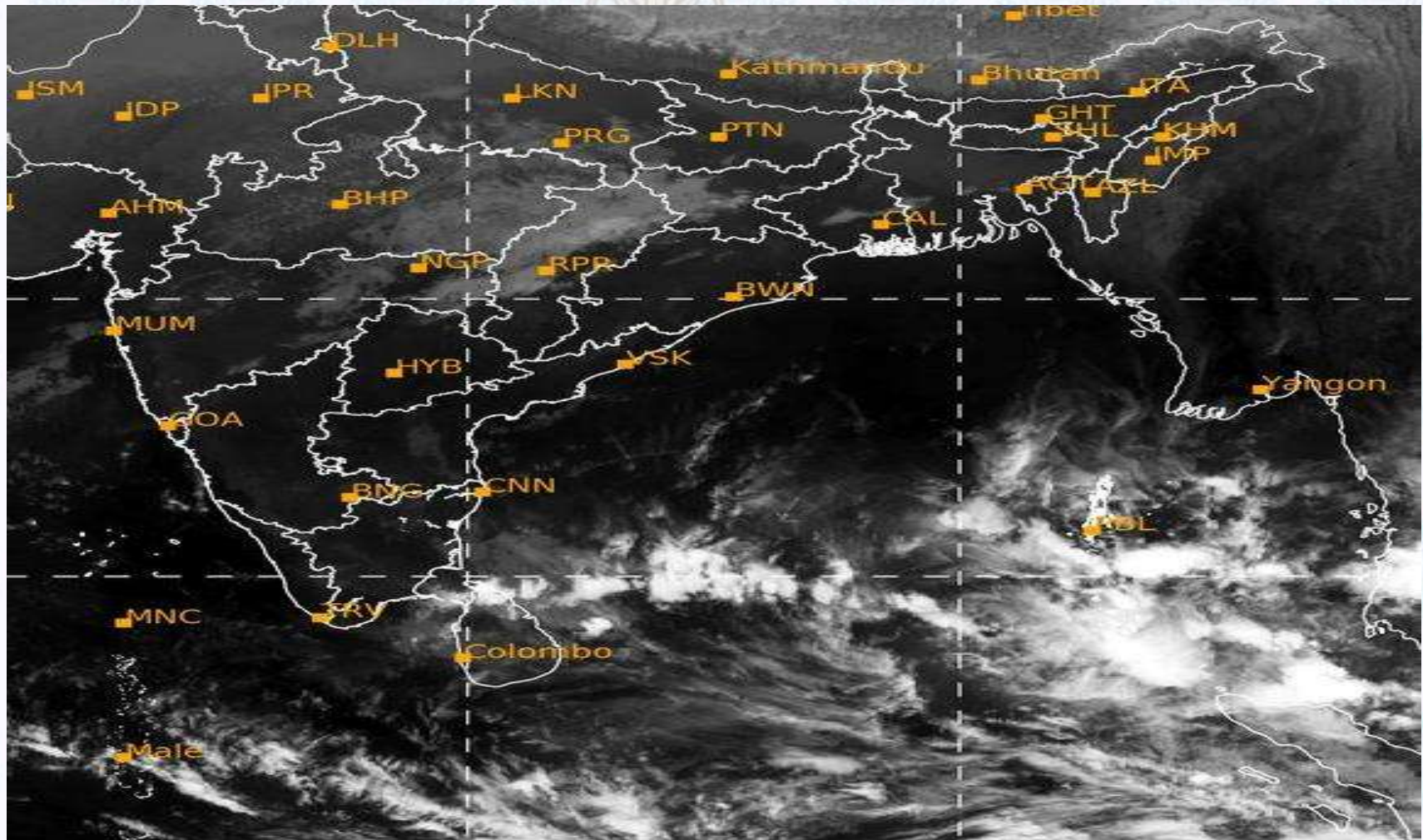
GENERAL WEATHER FORECAST – KHULNA

Description	29 Dec 2020	30 Dec 2020	31 Dec 2020
Temperature(C)	25°C/ 13°C	25°C/ 13°C	25°C/ 12°C
Summary	AM Fog / PM Sunny	AM Fog / PM Sunny	AM Fog / PM Sunny
Sun Rise/Set	6h41m30s/17h26m30s	6h41m42s/17h27m00s	6h42m12s/17h27m36s
Day Length	10h45m00s	10h45m18s	10h45m24s
Moon Rise/Set	4:46 PM 5:48 AM	5:38 PM 6:43 AM	6:34 PM 7:37 AM
Moon Phase/illu	Full Moon, 99%	Full Moon, 99%	Waning Gibbous, 98%
Nautical Twilight	05:48, 18:17	05:49, 18:19	05:49, 18:20
Civil Twilight	06:18, 17:47	06:17, 17:51	06:17, 17:52
Humidity	D : 61% N : 79%	D : 61% N : 72%	D : 58% N : 74%
Barometer (mb)	1013	1014	1014
Visibility	Moderate	Moderate	Moderate
Precip Chance	5%	5%	5%
Wind (mph)	10 km/h NNW	14 km/h NNW	11 km/h NNW

Ref: <https://weather.com/weather/5day//BGXX0005:1:BG>



SATELLITE VIEW OF BAY OF BENGAL

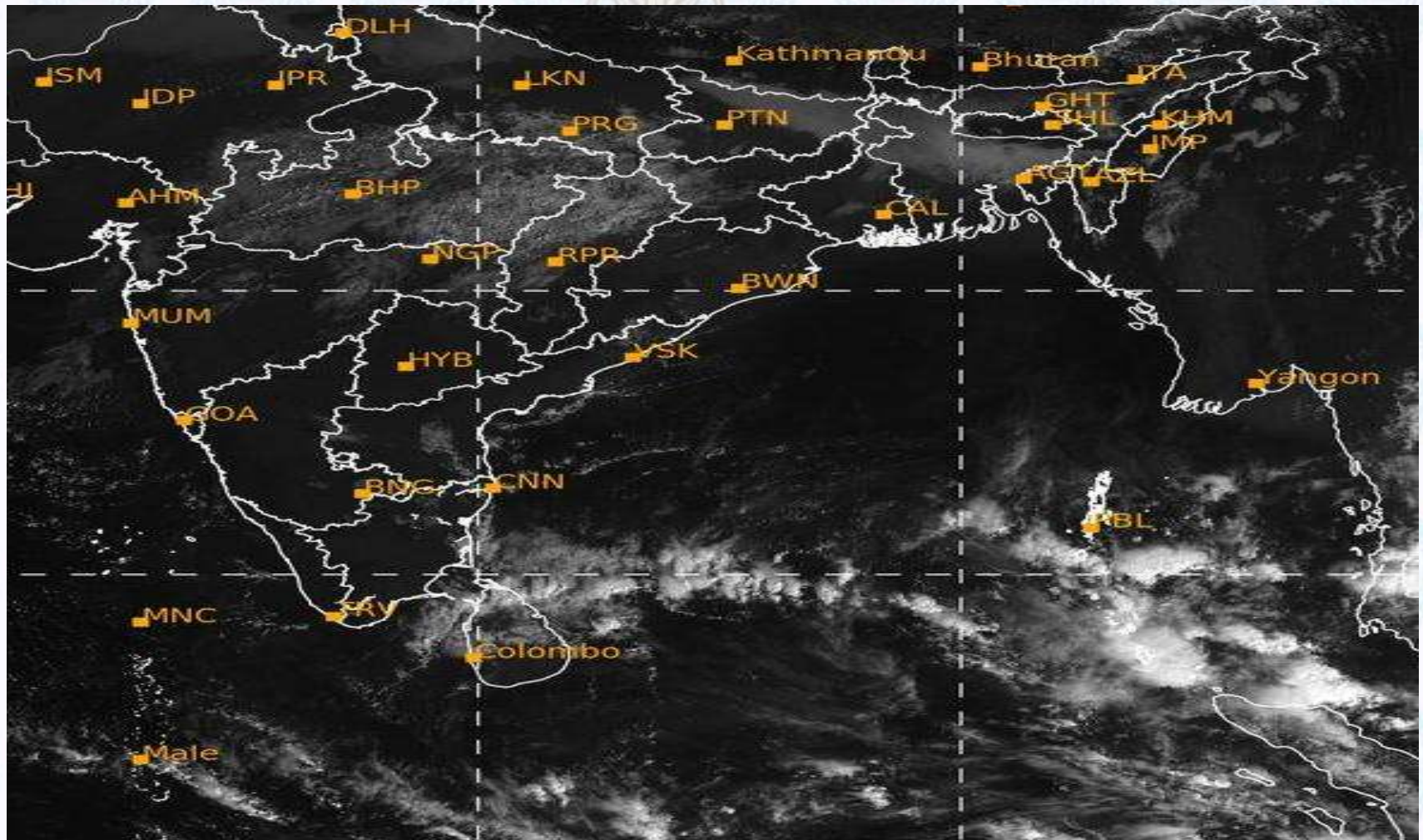


28/12/2020, 11:00 UTC MATSAT-IR

Ref: <http://satellite.imd.gov.in/insat.htm>



SATELLITE VIEW OF BAY OF BENGAL



28/12/2020, 11:00 MATSAT-VIS

Ref: <http://satellite.imd.gov.in/insat.htm>



Fleet Forecast Sea Area C-90 (Valid for 12 Hrs Commencing 1000 UTC of 28.12.2020)

Part One	NO STORM WARNING.	
Part Two	SEASONAL LOW LIES OVER SOUTH BAY.	
Part Three	Weather	TEMPORARY PARTLY CLOUDY OVER AREA C-90.
	Wind	NORTH/NORTH-EASTERLY, 08-12 KTS.
	Visibility	03-05 KMS REDUCING TO 1000 M OR LESS IN MIST/FOG.
	Outlook	FOR SUBSEQUENT 12 HOURS: LITTLE CHANGE.
	MSL Pressure	AT = 28,0000 UTC. CHATTOGRAM =1013 HPA



Inland River Port Warning (VALID TILL 06 PM OF 28.12.2020)

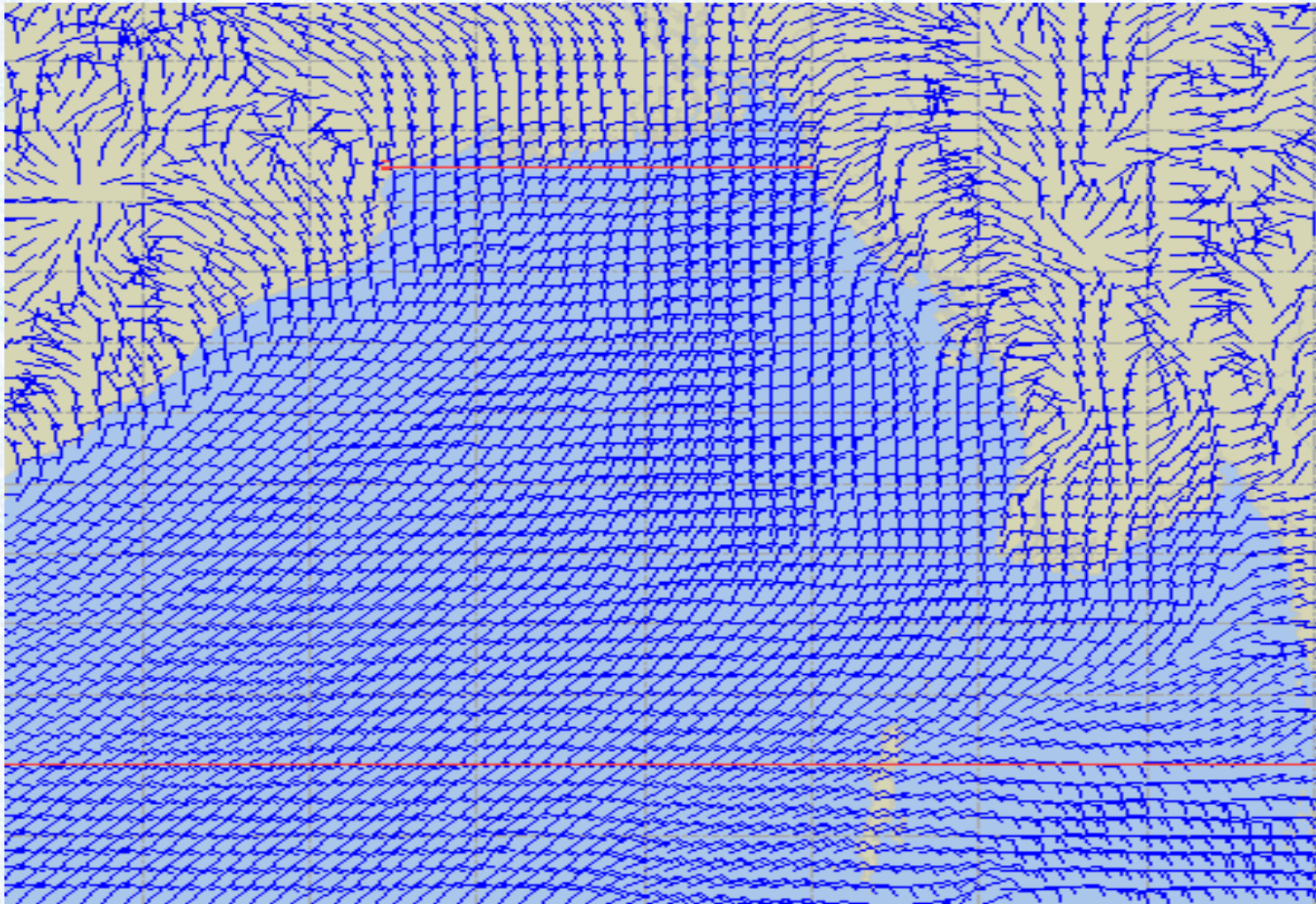
THERE IS NO INLAND RIVERPORT WARNING AND NO SIGNAL IS TO BE HOISTED.



Ref: <http://www.bmd.gov.bd/?/home>



Surface Wind Forecast- 29 Dec - 2020



Legend:



**Calm
Winds**



5 Knots



10 Knots



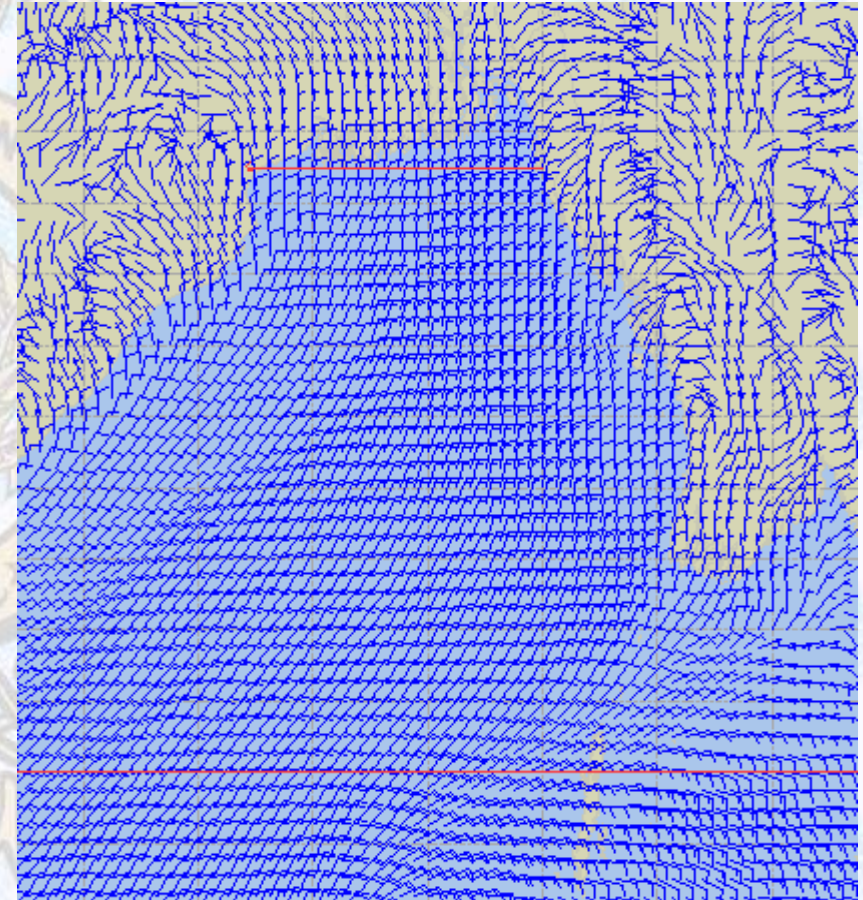
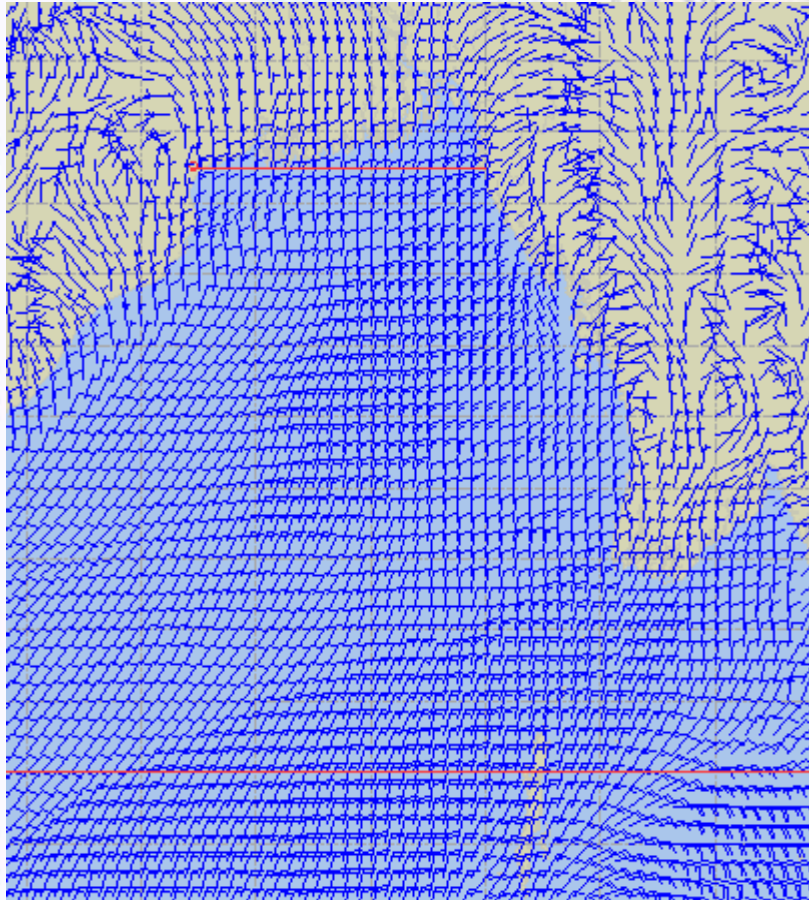
60 Knots



Surface Wind Forecast – 30 & 31 Dec - 2020

30 Dec 20 Wednesday

31 Dec 20 Thursday



Legend:



**Calm
Winds**



5 Knots



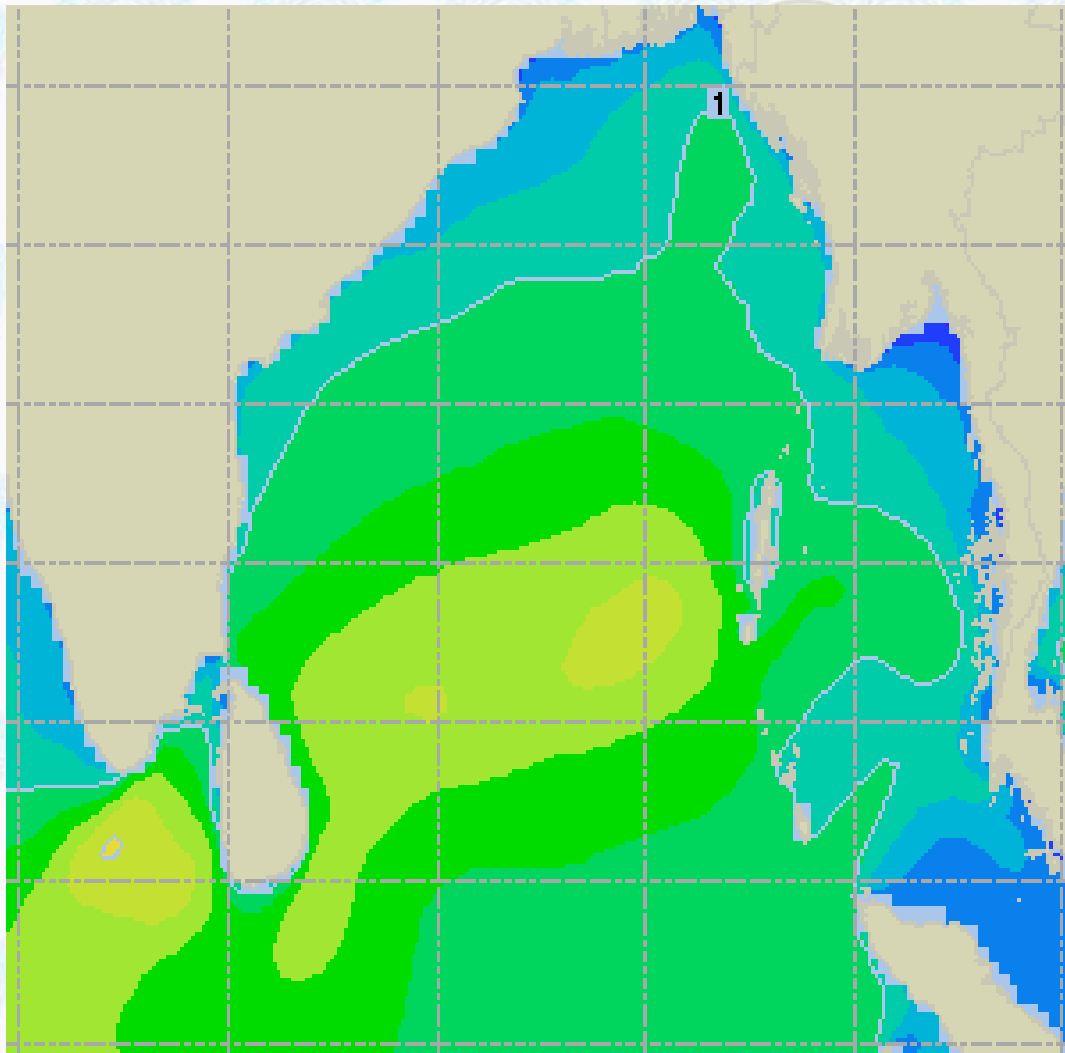
10 Knots



60 Knots



Sea State Forecast – 29 Dec - 2020



Sea State	Ht (m)
0	0-0.1
1	0-0.1
2	0.1-0.5
3	0.5-1.25
4	1.25-2.5
5	2.5-4.0
6	4-6
7	6-9
8	9-14
9	Over 14

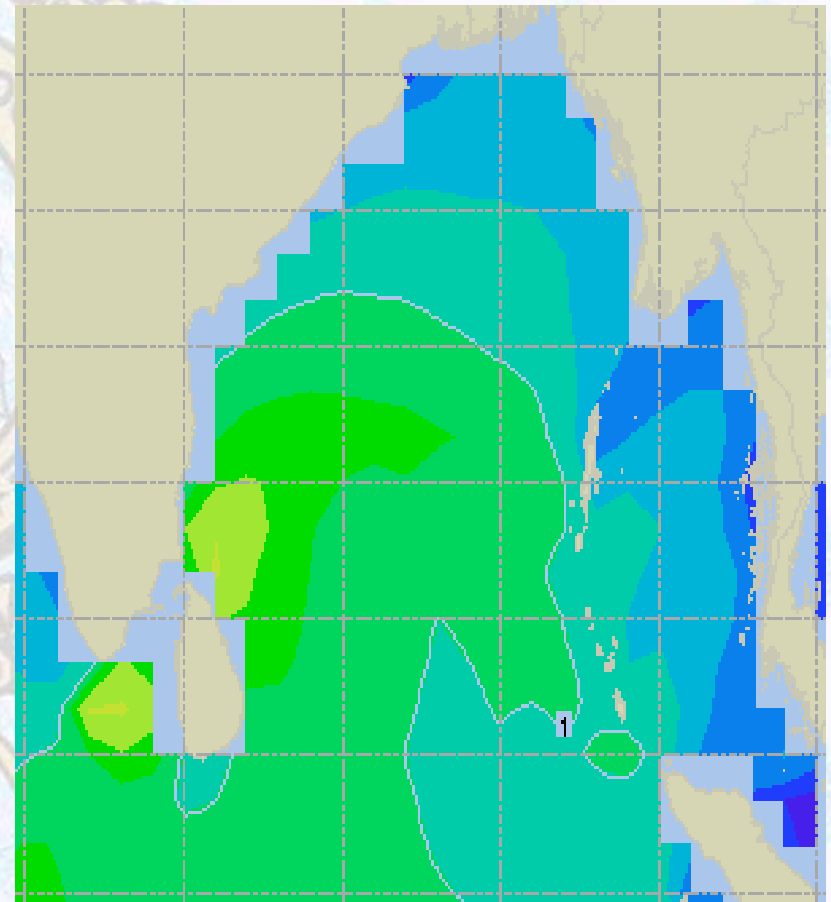
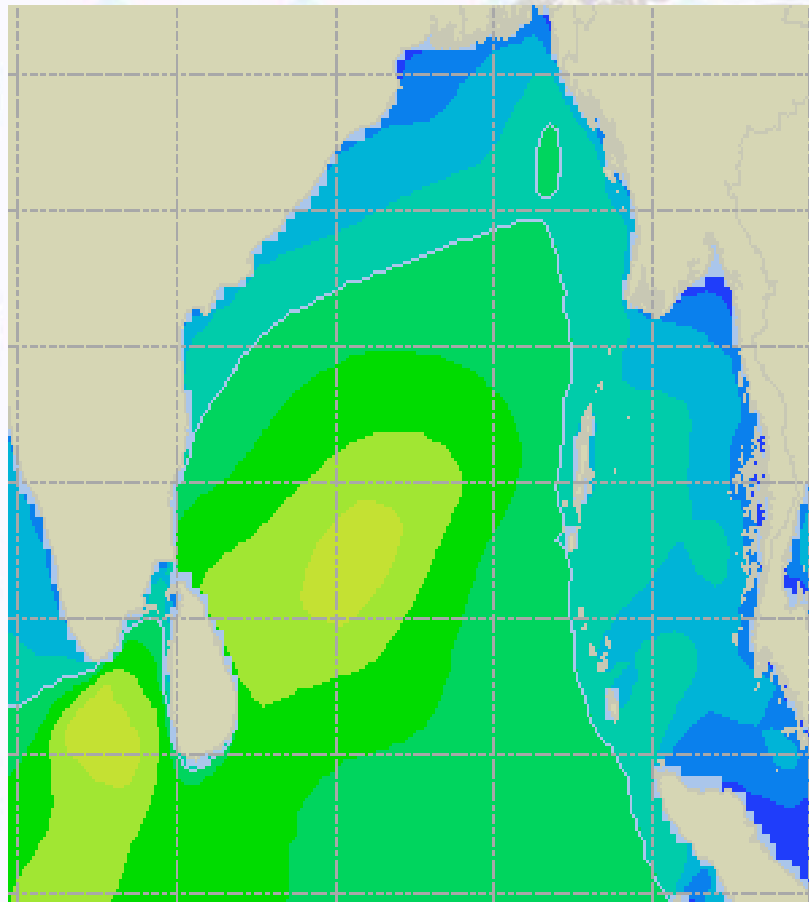




Sea State Forecast – 30 & 31 Dec - 2020

30 Dec 20 Wednesday

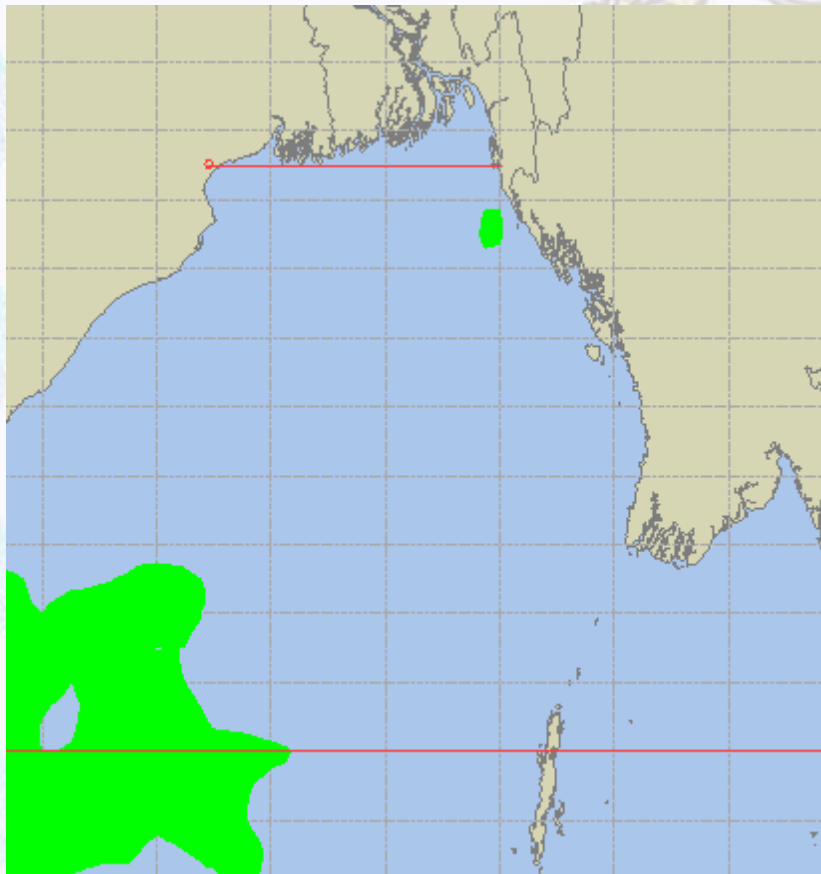
31 Dec 20 Thursday



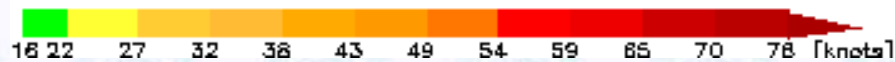
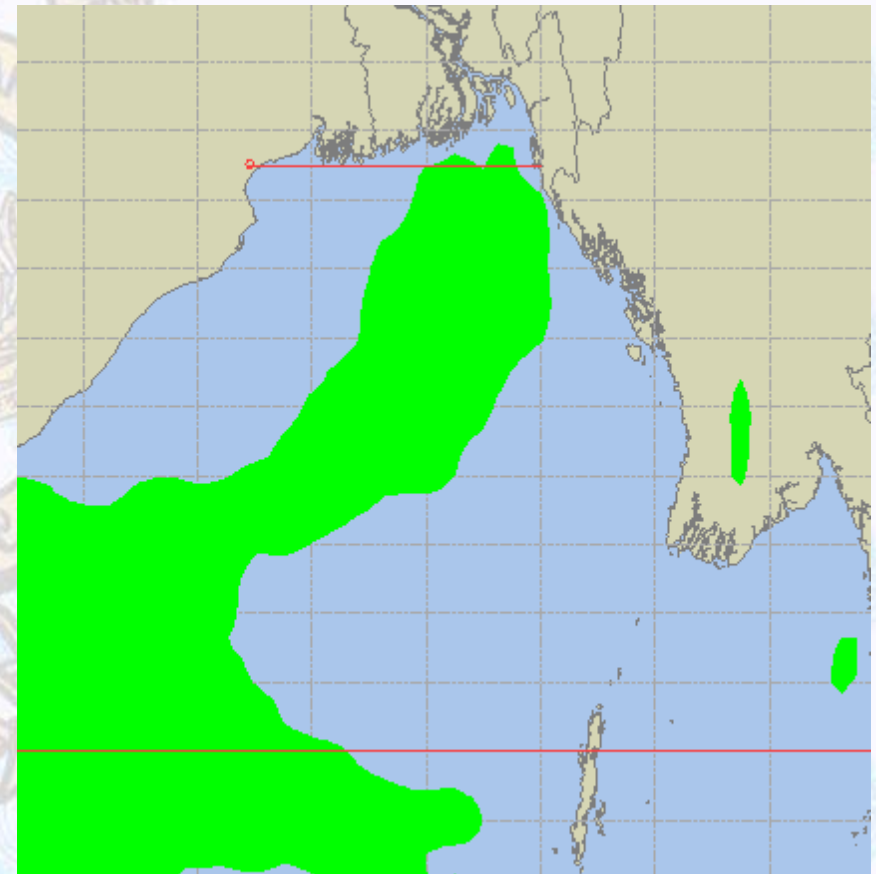


Peak Gusting Possibilities— 29 & 30 Dec 2020

29 Dec 20 Tuesday



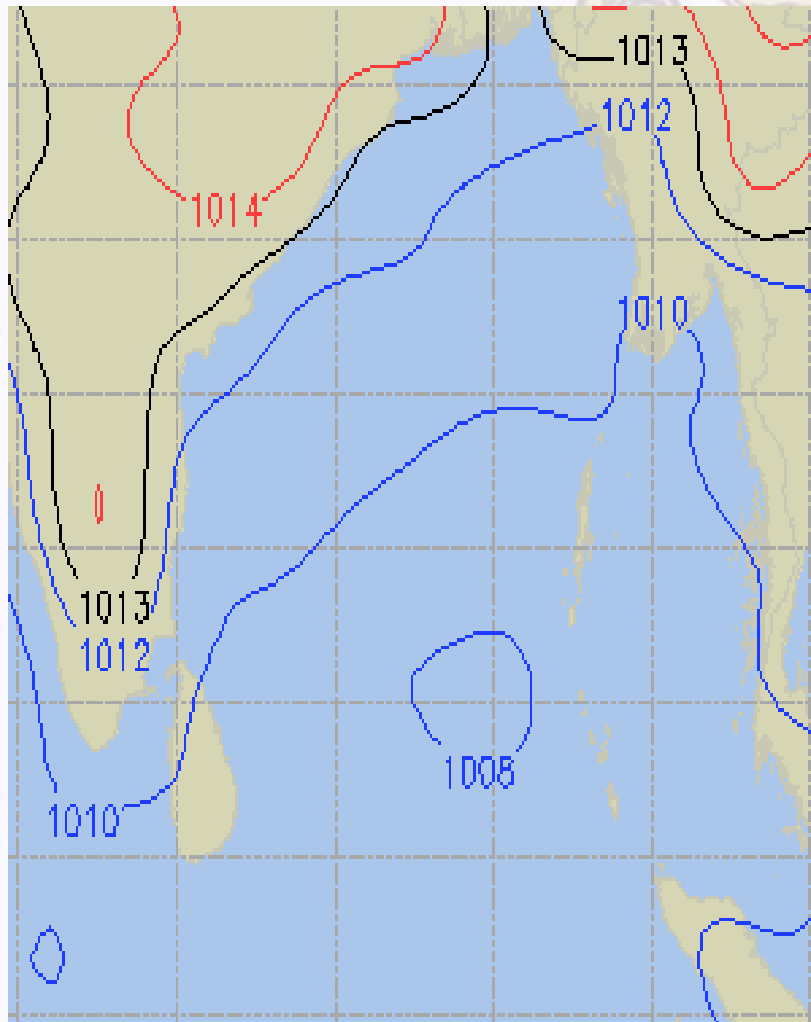
30 Dec 20 Wednesday



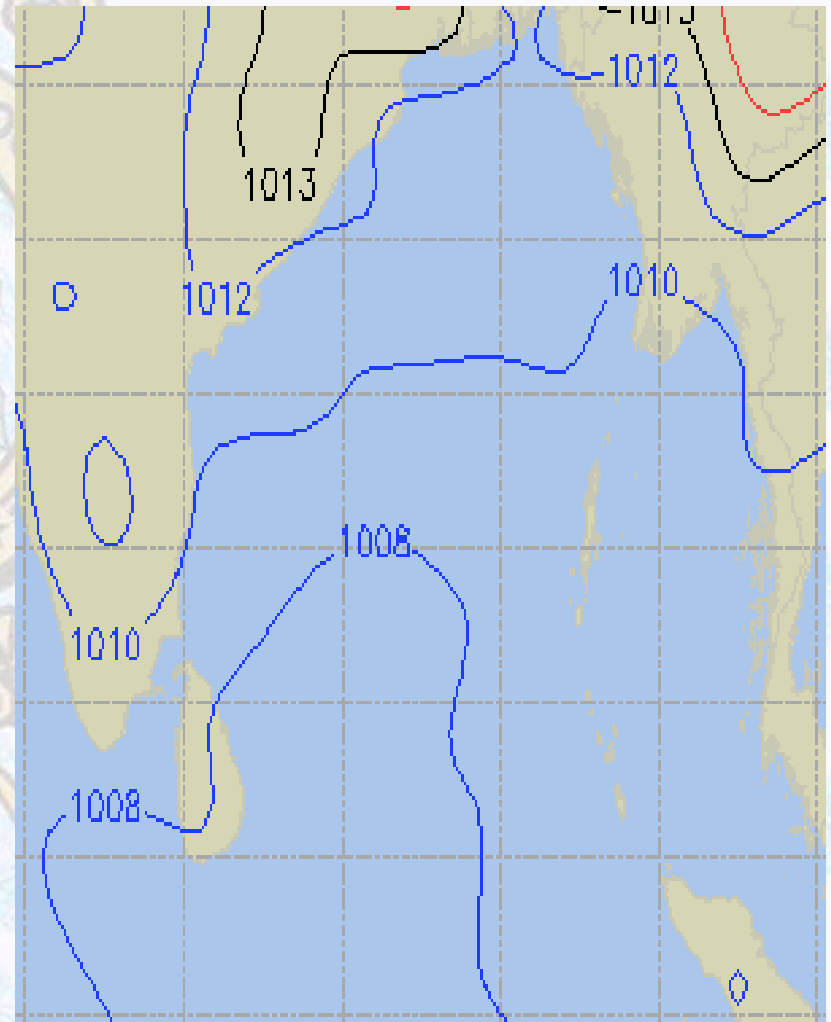


Surface Pressure forecast– 29 & 30 Dec 2020

29 Dec 20 Tuesday



30 Dec 20 Wednesday

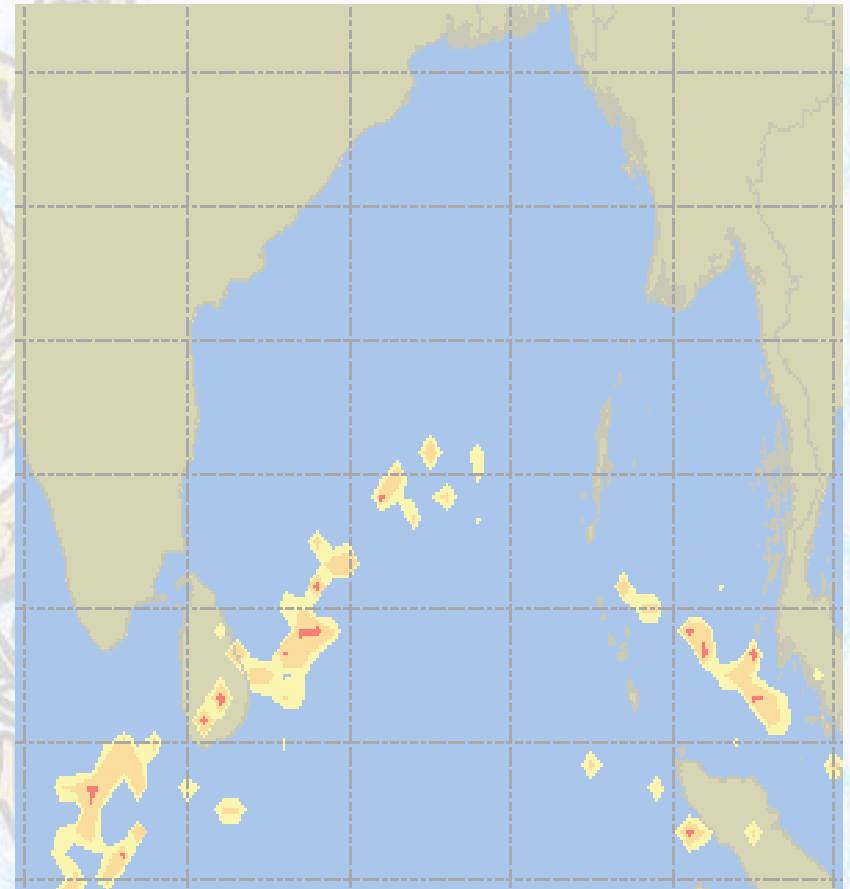
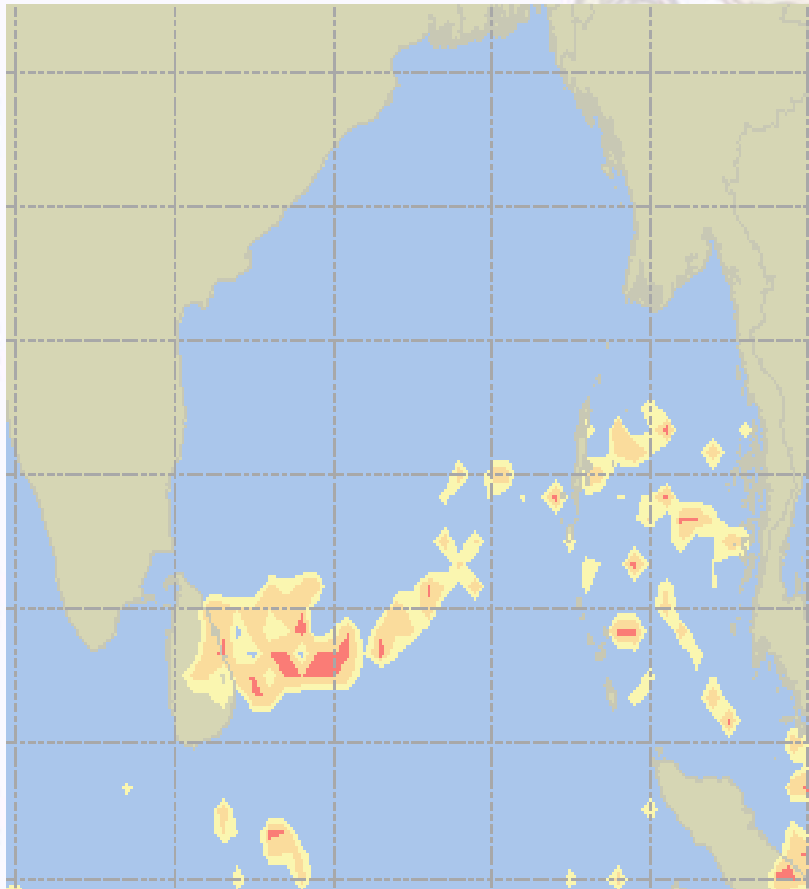




Visibility at Sea Forecast – 29 & 30 Dec 2020

29 Dec 20 Tuesday

30 Dec 20 Wednesday



Visibility Scale:



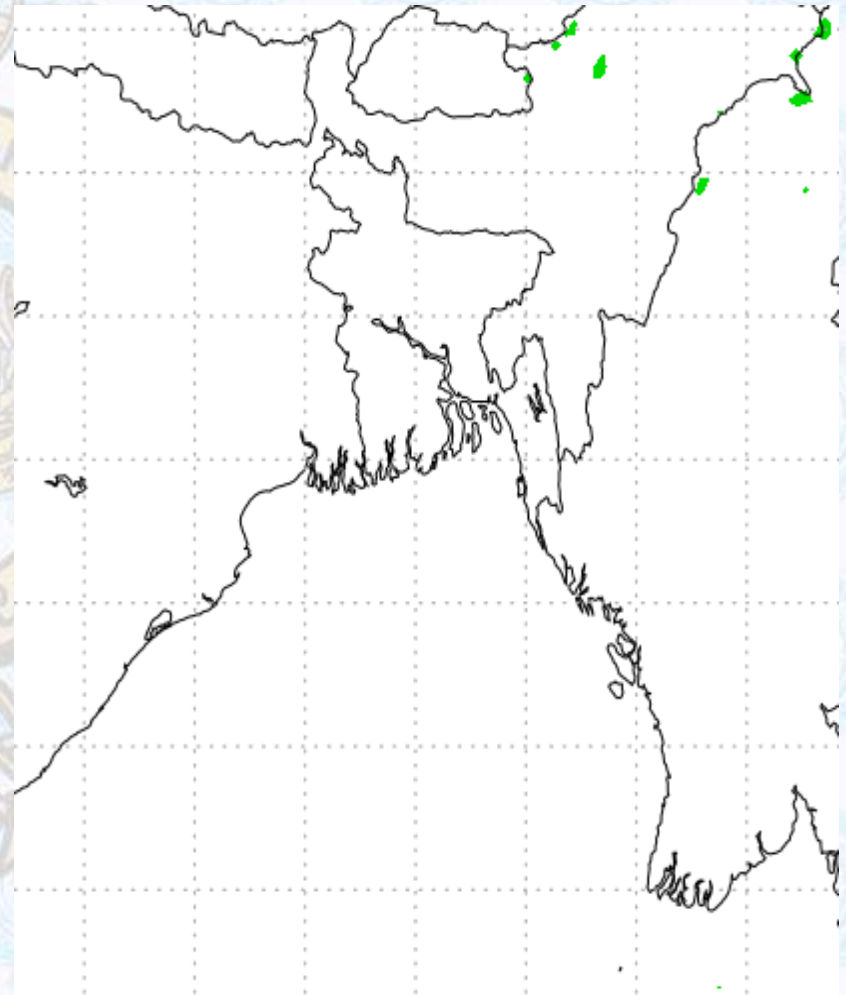
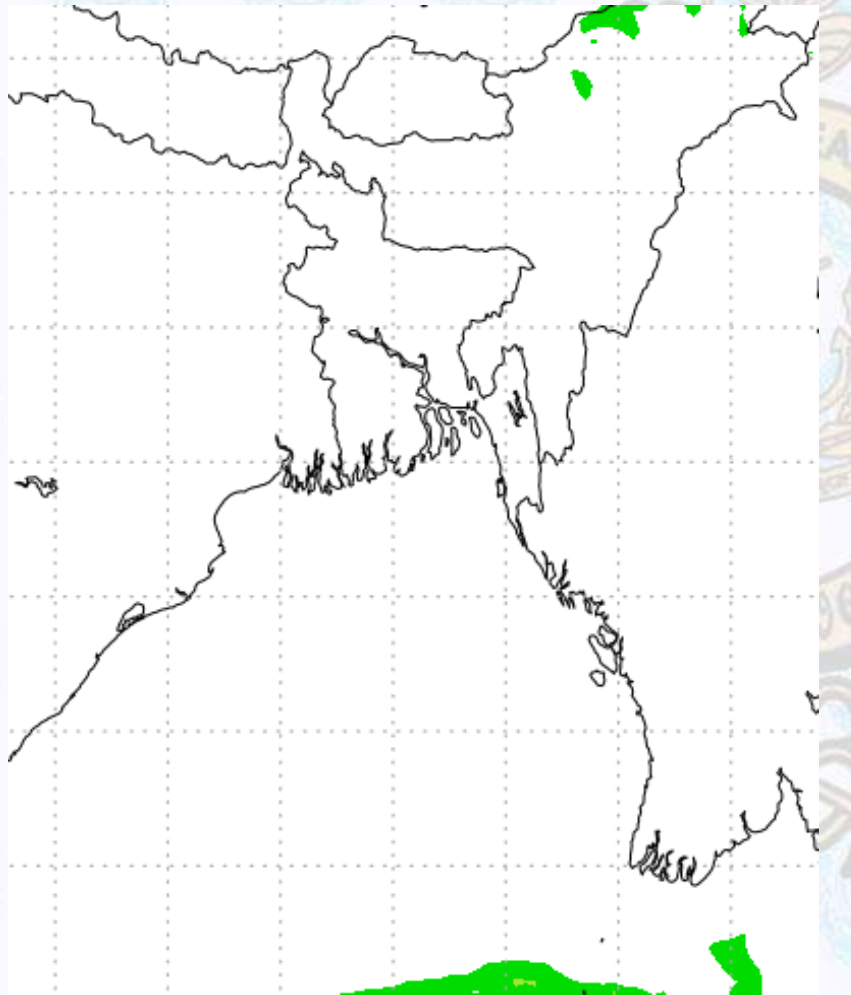
Ref (Slide 12-18): <http://www.weatheronline.co.uk/marine/weather?LEVEL>



Precipitation

Rain(mm) 29 & 30 Dec 2020

Rain(mm) 30 & 31 Dec 2020



Precipitation Scale (mm):





Tidal Information

KHAL NO. 10

COX'S BAZAR

HIRAN POINT

29 Dec 2020	Time	Height		Time	Height		Time	Height
	0016	4.22		0438	0.65		0432	0.85
	0657	0.70		1013	2.77		1021	2.43
	1240	3.71		1644	0.56		1620	0.66
	1850	0.64		2236	3.30		2238	2.83
30 Dec 2020	Time	Height		Time	Height		Time	Height
	0047	4.28		0514	0.57		0508	0.77
	0732	0.67		1048	2.86		1056	2.48
	1311	3.77		1721	0.49		1657	0.60
	1925	0.60		2311	3.37		2312	2.86
31 Dec 2020	Time	Height		Time	Height		Time	Height
	0116	4.32		0550	0.52		0543	0.71
	0806	0.66		1122	2.91		1131	2.51
	1341	3.81		1756	0.46		1734	0.57
	2000	0.59		2347	3.39		2346	2.88