



WEATHER FORECAST FOR BN

19 - 22 DEC 2020



WEATHER FORECAST – DHAKA

19.12.2020

Hourly	2 PM	4 PM	8 PM	11 PM
Temp. / Dew Point	23 / 9	22 / 11	18 / 12	16 / 12
Wind	6 km/h NNW	10 km/h NW	7 km/h NW	6 km/h NW
Humidity	50%	50%	64%	75%
Chance of Precip	1%	1%	4%	5%
Cloud Cover	1%	1%	0%	0%
Conditions	Sunny	Sunny	Clear	Clear
Sunrise Sunset	06: 35 AM 17: 15 PM			

Conditions

Pressure : 1016 hpa

Visibility : 3.25 km

Ref: <https://www.wunderground.com/weather/bd/dhaka>



WEATHER FORECAST – CHATTOGRAM

19.12.2020

Hourly	2 PM	4 PM	8 PM	11 PM
Temp. / Dew Point	25 / 12	24 / 13	20 / 15	18 / 14
Wind	12 km/h NNW	12 km/h NW	12 km/h NNW	12 km/h N
Humidity	45%	59%	75%	80%
Chance of Precip.	1%	1%	2%	4%
Cloud Cover	0%	2%	2%	11%
Conditions	Sunny	Sunny	Clear	Clear
Sunrise	06: 27 AM			
Sunset	17: 13 PM			

Conditions

Pressure : 1015 hpa

Visibility : 8:54 Km

Ref: <https://www.wunderground.com/weather/bd/chittagong>



WEATHER FORECAST – KHULNA

19.12.2020

Hourly	2 PM	4 PM	8 PM	11 PM
Temp. / Dew Point	23 / 6	22 / 8	16 / 9	13 / 9
Wind	6 km/h NNW	11 km/h NNW	5 km/h NW	5 km/h NNW
Humidity	54%	54%	75%	83%
Chance of Precip.	1%	1%	3%	5%
Cloud Cover	1%	1%	3%	12%
Conditions	Sunny	Sunny	Clear	Clear
Sunrise Sunset	06: 37 AM 17: 21 PM			

Conditions

Pressure : 1016 hpa

Visibility : 8.05 Km

Ref: <https://www.wunderground.com/weather/bd/khulna>



GENERAL WEATHER FORECAST – DHAKA

Description	20 Dec 2020	21 Dec 2020	22 Dec 2020
Temperature (C)	23 °C / 13 °C	23 °C / 14 °C	24 °C / 14 °C
Summary	Sunny	AM Fog / PM Sunny	AM Fog / PM Sunny
Sun Rise/Set	6h36m24s/17h16m12s	6h36m54s/17h16m42s	6h37m24s/17h17m12s
Day Length	10h39m48s	10h39m48s	10h39m48s
Moon Rise/ Set	11:15AM 10:52PM	11:50AM 11:44PM	12:22 AM 11:44 PM
Moon Phase/ illu	Waxing Crescent, 39%	Waxing Crescent, 49%	First Quarter, 50%
NauticalTwilight	05:43,18:09	05:43,18:09	05:43,18:09
Civil Twilight	06:11,17:40	06:11,17:41	06:11,17:41
Humidity	D : 71% N : 84%	D : 74% N : 84%	D : 76% N : 82%
Barometer (mb)	1016	1015	1014
Visibility	Moderate	Moderate	Moderate
Precip Chance	5%	5%	5%
Wind (mph)	7 Km/h NW	3 Km/h WNW	4 Km/h W

Ref: <https://weather.com/weather/5day//BGXX0003:1:BG>



GENERAL WEATHER FORECAST– CHATTOGRAM

Description	20 Dec 2020	21 Dec 2020	22 Dec 2020
Temperature (C)	25 °C/ 13 °C	24 °C/ 13 °C	24 °C/ 13 °C
Summary	Sunny	AM Fog / PM Sunny	AM Fog / PM Sunny
Sun Rise/Set	6h27m30s/17h13m42s	6h28m00s/17h14m12s	6h28m30s/17h14m42s
Day Length	10h46m12s	10h46m12s	10h46m12s
Moon Rise/ Set	11:08AM 10:47PM	11:50AM 11:40PM	12:22 AM 11:44 PM
Moon Phase/ illu	Waxing Crescent, 39%	Waxing Crescent, 49%	First Quarter, 50%
NauticalTwilight	05:34 18:05	05:35 18:06	05:35 18:06
Civil Twilight	06:02, 17:38	06:03, 17:38	06:03, 17:38
Humidity	D : 68% N : 88%	D : 74% N : 92%	D : 74% N : 92%
Barometer (mb)	1015	1014	1014
Visibility	Moderate	Moderate	Moderate
Precip Chance	5%	5%	5%
Wind (mph)	8 Km/h NNW	7 Km/h NW	7 Km/h NW

Ref: <https://weather.com/weather/5day//BGXX0002:1:BG>



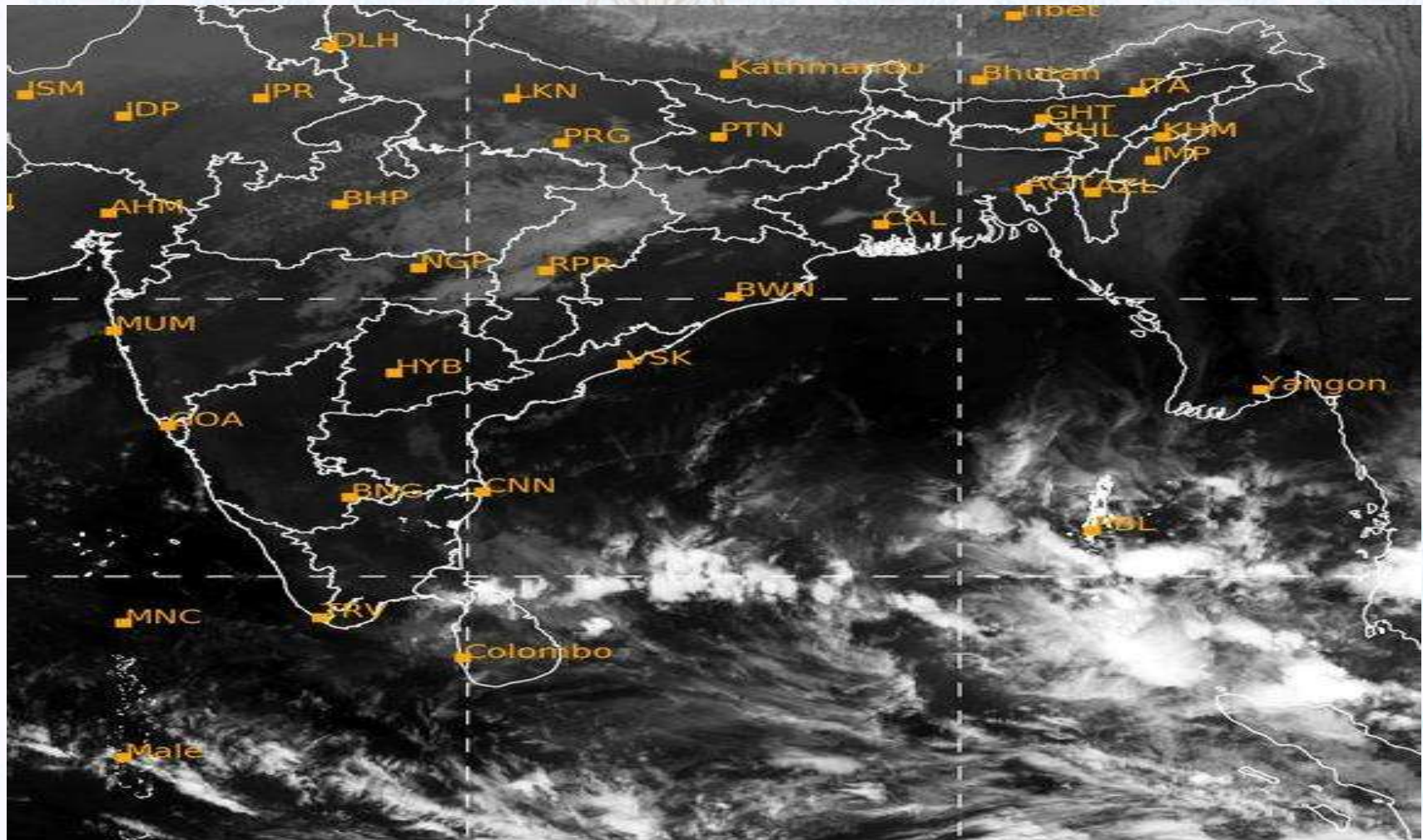
GENERAL WEATHER FORECAST – KHULNA

Description	20 Dec 2020	21 Dec 2020	22 Dec 2020
Temperature(C)	23°C/ 12°C	23°C/ 13°C	24°C/ 13°C
Summary	AM Fog / PM Sunny	AM Fog / PM Sunny	AM Fog / PM Sunny
Sun Rise/Set	6h37m42s/17h21m48s	6h38m12s/17h22m18s	6h38m42s/17h22m48s
Day Length	10h44m06s	10h44m06s	10h44m06s
Moon Rise/Set	11:18AM 10:56PM	11:50AM 11:44PM	12:22 AM 11:44 PM
Moon Phase/illu	Waxing Crescent, 39%	Waxing Crescent, 49%	First Quarter, 50%
NauticalTwilight	05:44, 18:14	05:45, 18:14	05:45, 18:14
Civil Twilight	06:12, 17:46	06:13, 17:46	06:13, 17:46
Humidity	D : 66% N : 81%	D : 69% N : 81%	D : 72% N : 81%
Barometer (mb)	1015	1015	1015
Visibility	Moderate	Moderate	Moderate
Precip Chance	5%	5%	5%
Wind (mph)	10 km/h NW	8 km/h NW	7km/h NW

Ref: <https://weather.com/weather/5day//BGXX0005:1:BG>



SATELLITE VIEW OF BAY OF BENGAL

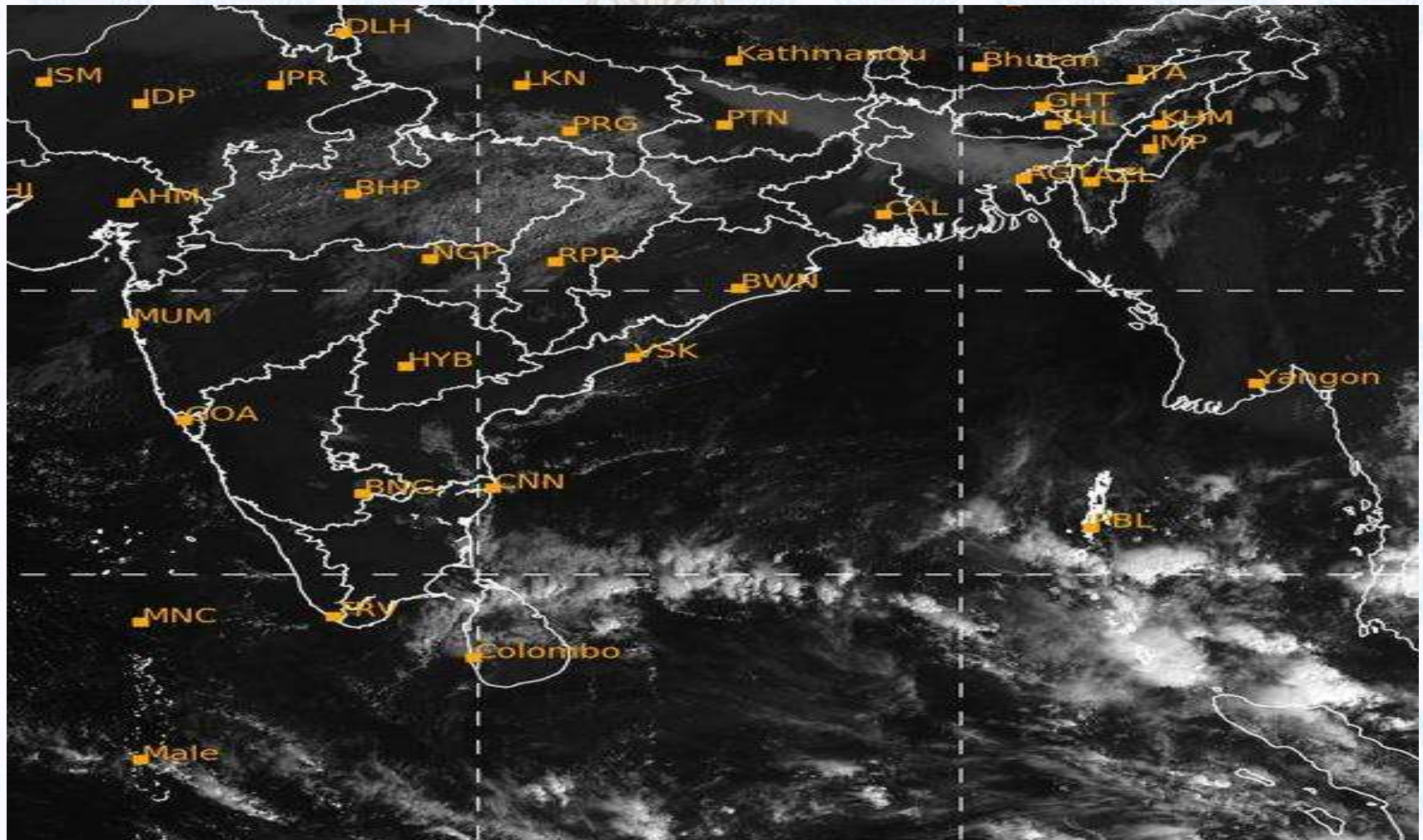


19/12/2020, 11:00 UTC MATSAT-IR

Ref: <http://satellite.imd.gov.in/insat.htm>



SATELLITE VIEW OF BAY OF BENGAL



19/12/2020, 11:00 MATSAT-VIS

Ref: <http://satellite.imd.gov.in/insat.htm>



Fleet Forecast Sea Area C-90 (Valid for 12 Hrs Commencing 1000 UTC of 19.12.2020)

Part One	NO STORM WARNING.	
Part Two	SEASONAL LOW LIES OVER SOUTH BAY.	
Part Three	Weather	TEMPORARY PARTLY CLOUDY OVER AREA C-90.
	Wind	NORTH/NORTH-WESTERLY, 08-12 KTS.
	Visibility	03-05 KMS REDUCING TO 1000 M OR LESS IN MIST/FOG.
	Outlook	FOR SUBSEQUENT 12 HOURS: LITTLE CHANGE.
	MSL Pressure	AT = 19,0000 UTC. CHATTOGRAM =1015 HPA



Inland River Port Warning (VALID TILL 06 PM OF 19.12.2020)

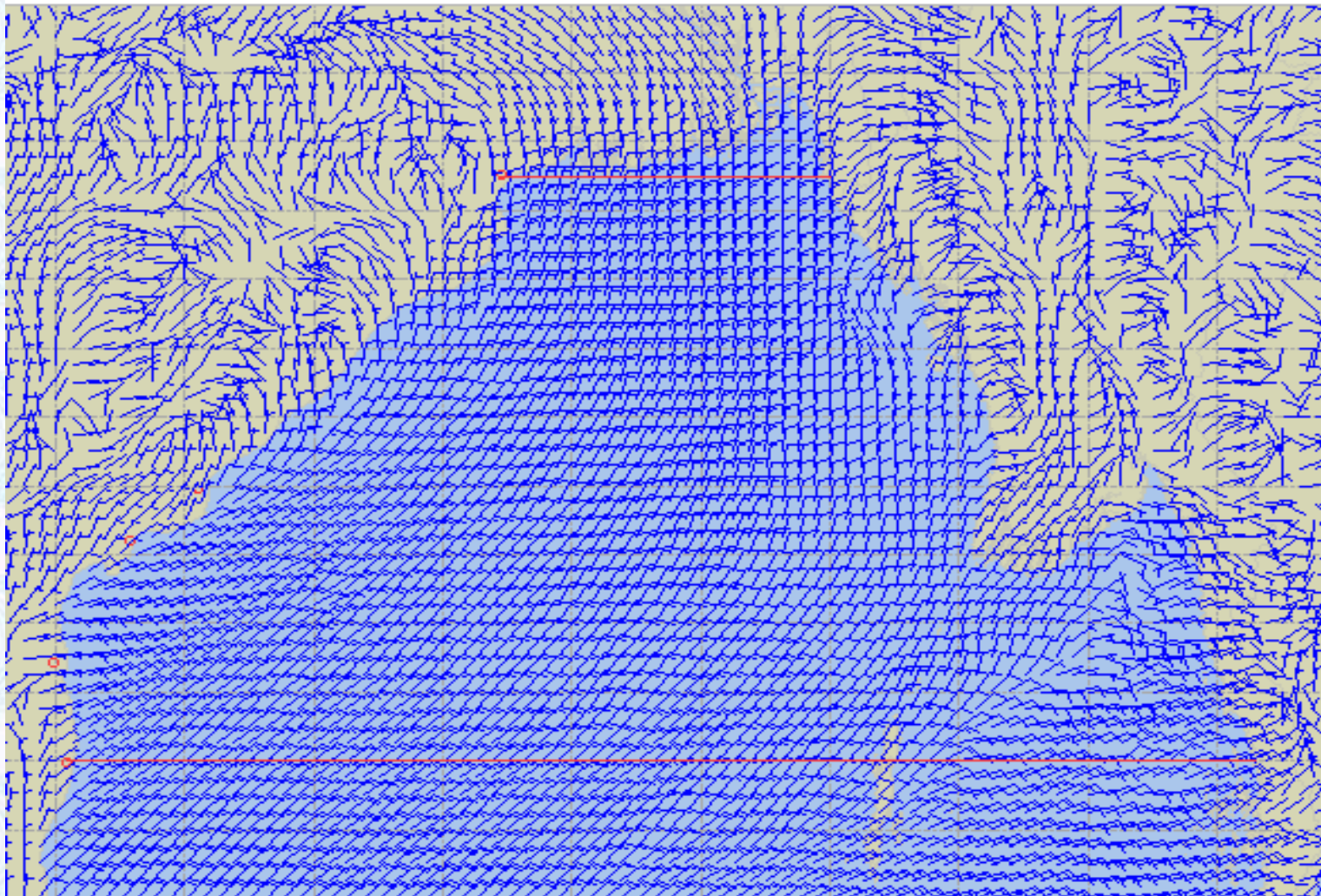
THERE IS NO INLAND RIVERPORTS WARNING AND NO SIGNAL IS TO BE HOISTED.



Ref: <http://www.bmd.gov.bd/?/home>



Surface Wind Forecast- 20 Dec - 2020



Legend:



**Calm
Winds**



5 Knots



10 Knots



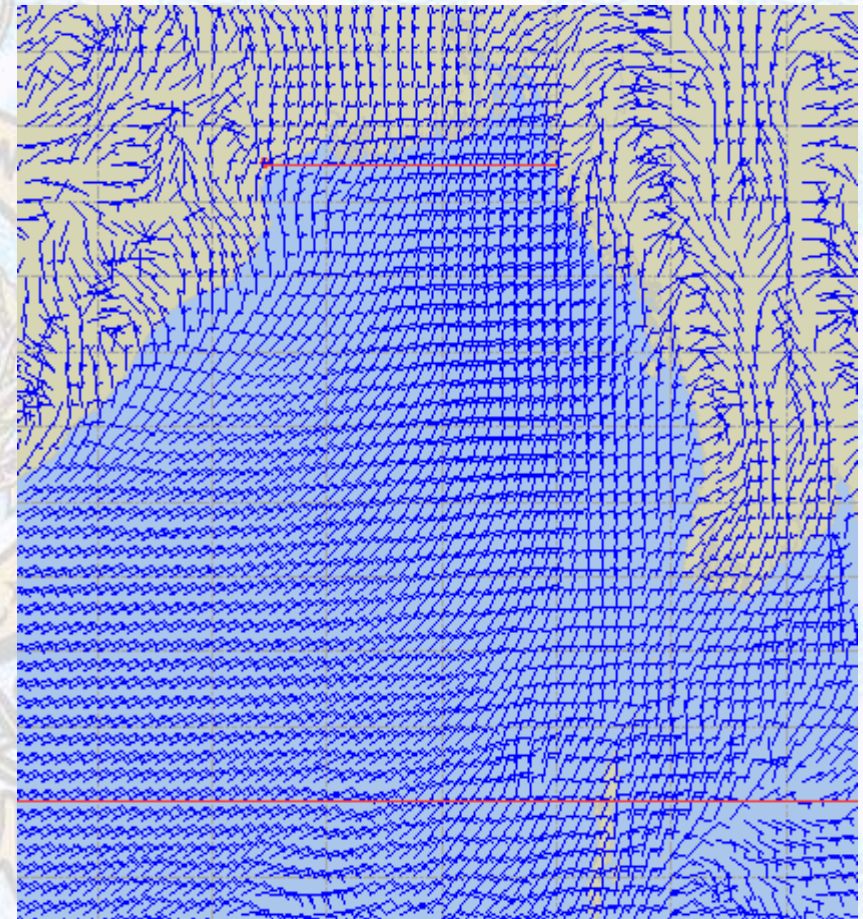
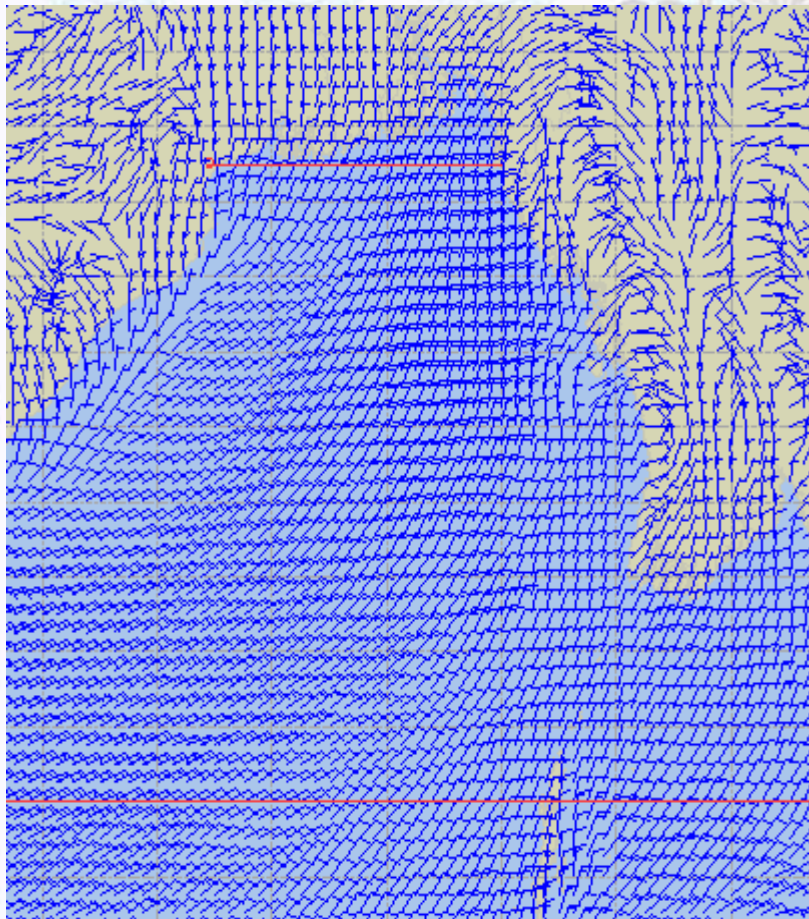
60 Knots



Surface Wind Forecast – 21 & 22 Dec - 2020

21 Dec 20 Monday

22 Dec 20 Tuesday



Legend:



Calm
Winds



5 Knots



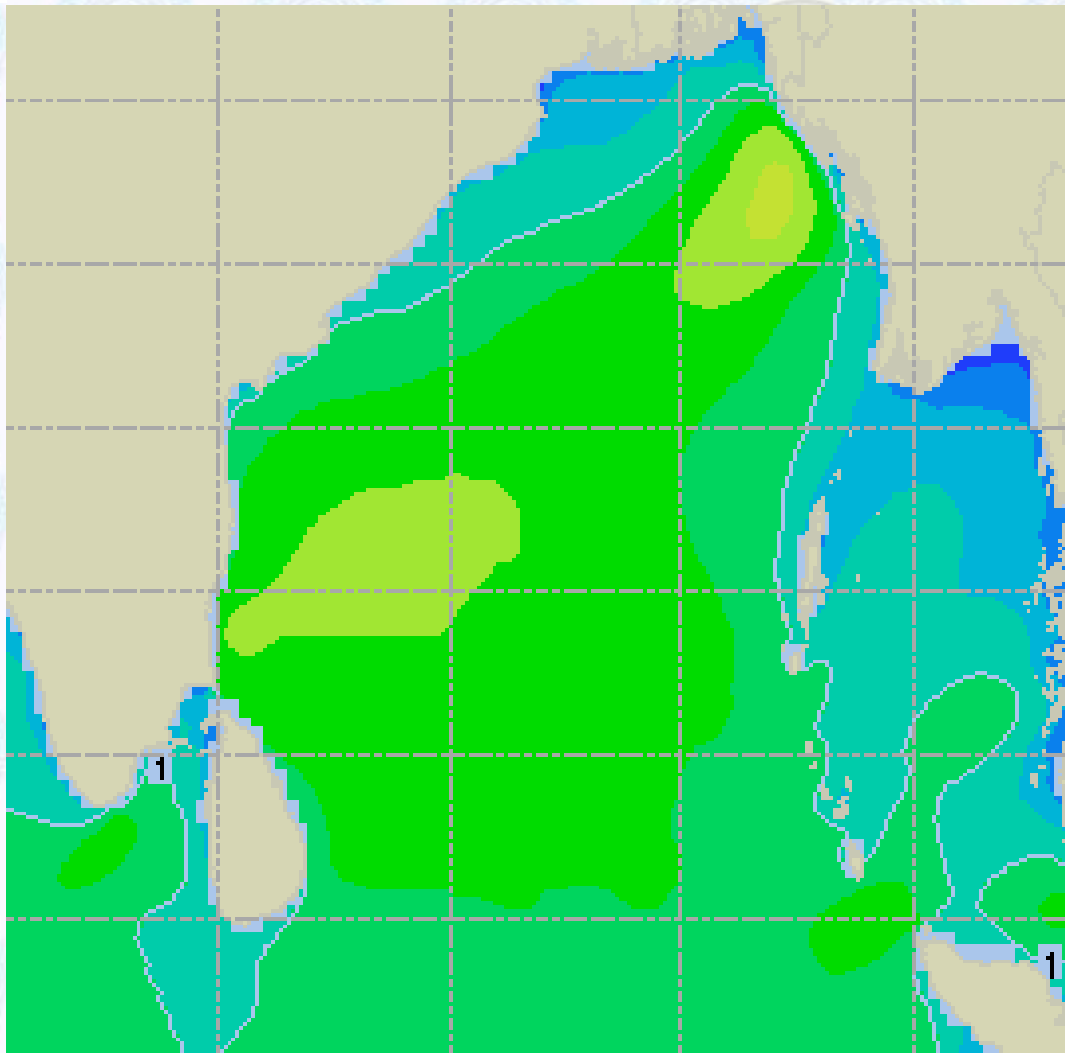
10 Knots



60 Knots



Sea State Forecast – 20 Dec - 2020



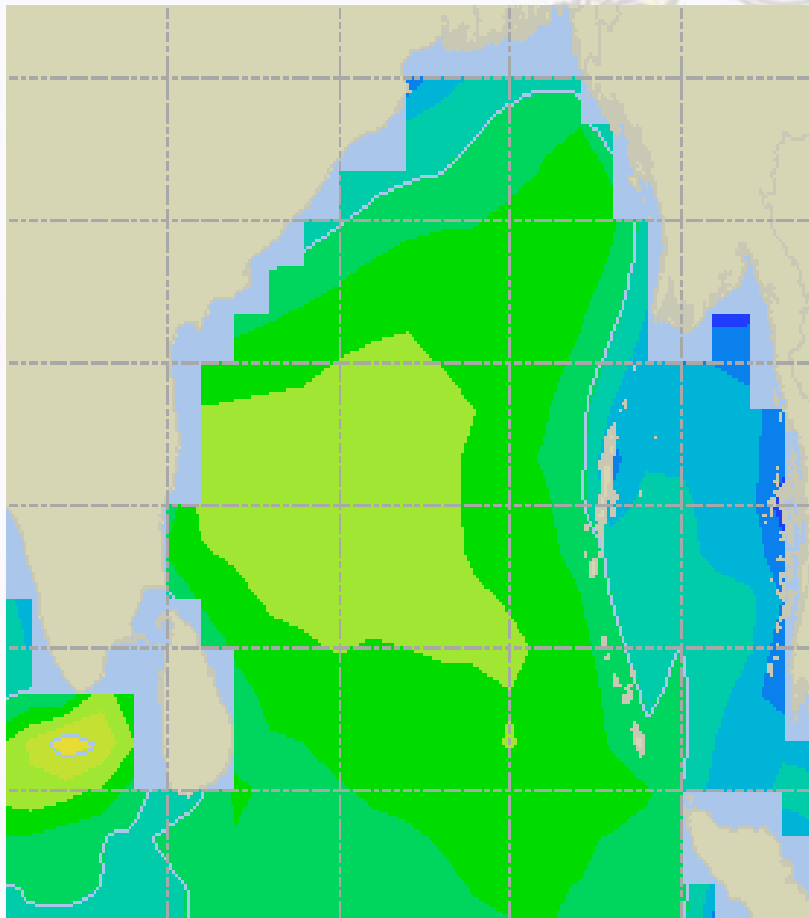
Sea State	Ht (m)
0	0-0.1
1	0-0.1
2	0.1-0.5
3	0.5-1.25
4	1.25-2.5
5	2.5-4.0
6	4-6
7	6-9
8	9-14
9	Over 14



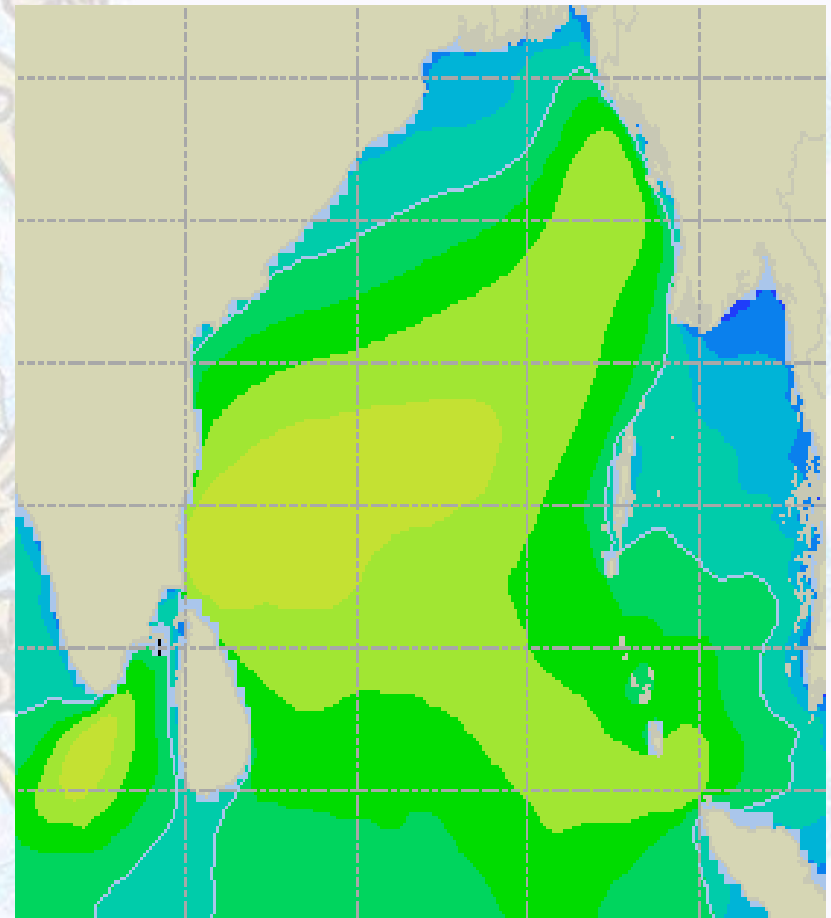


Sea State Forecast – 21 & 22 Dec - 2020

21 Dec 20 Monday



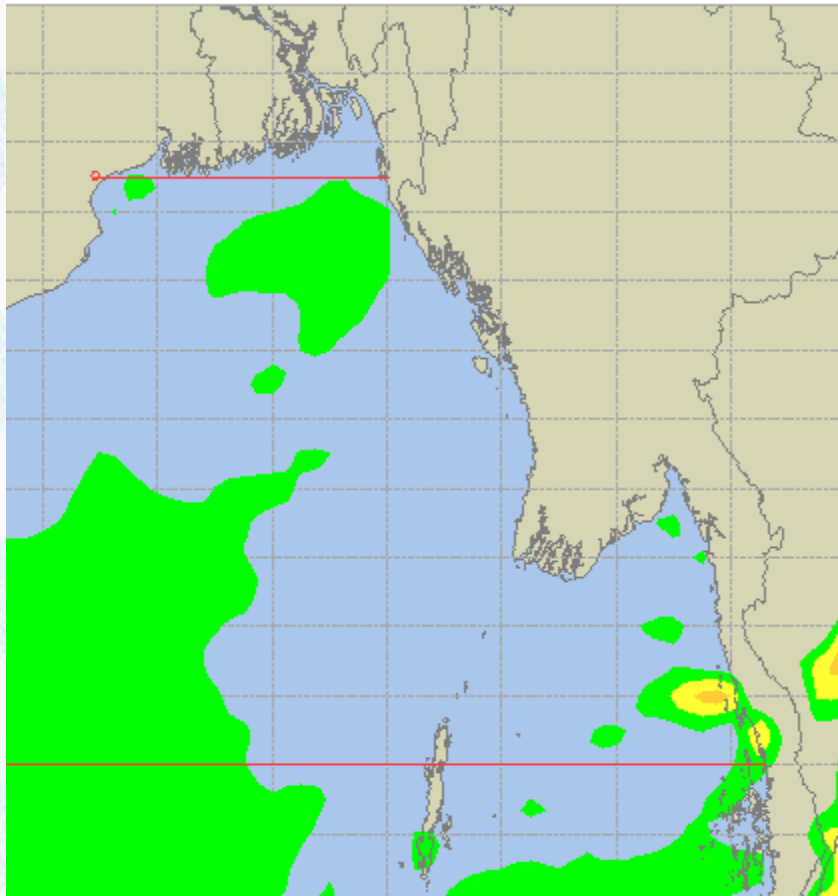
22 Dec 20 Tuesday



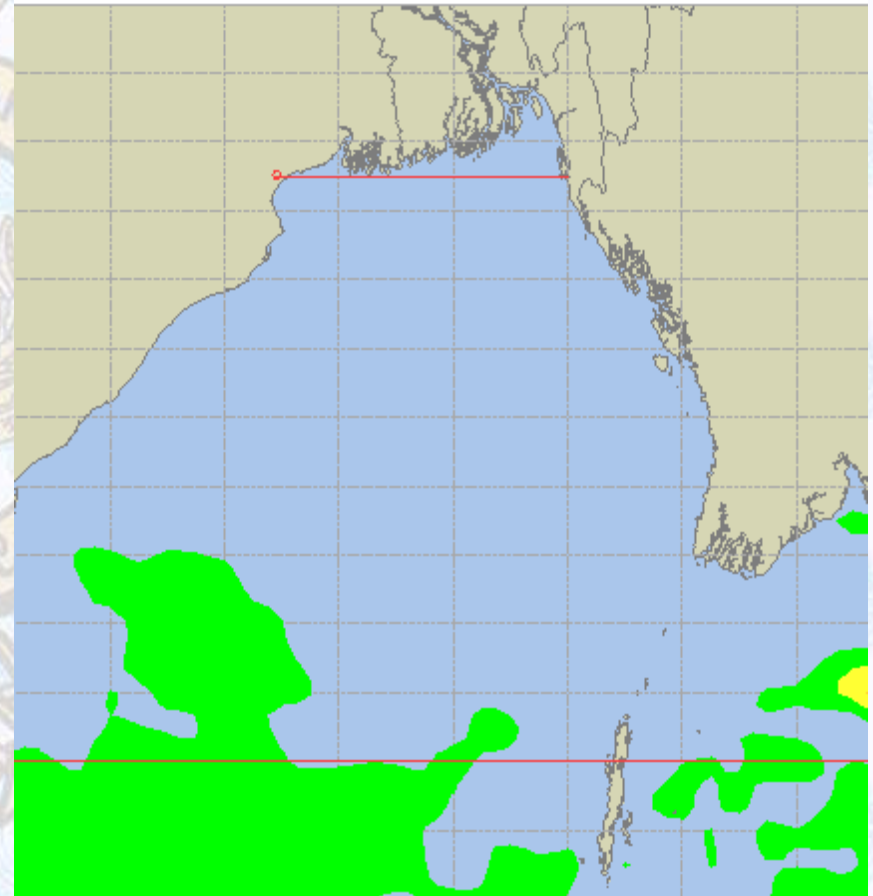


Peak Gusting Possibilities— 20 & 21 Dec 2020

20 Dec 20 Sunday



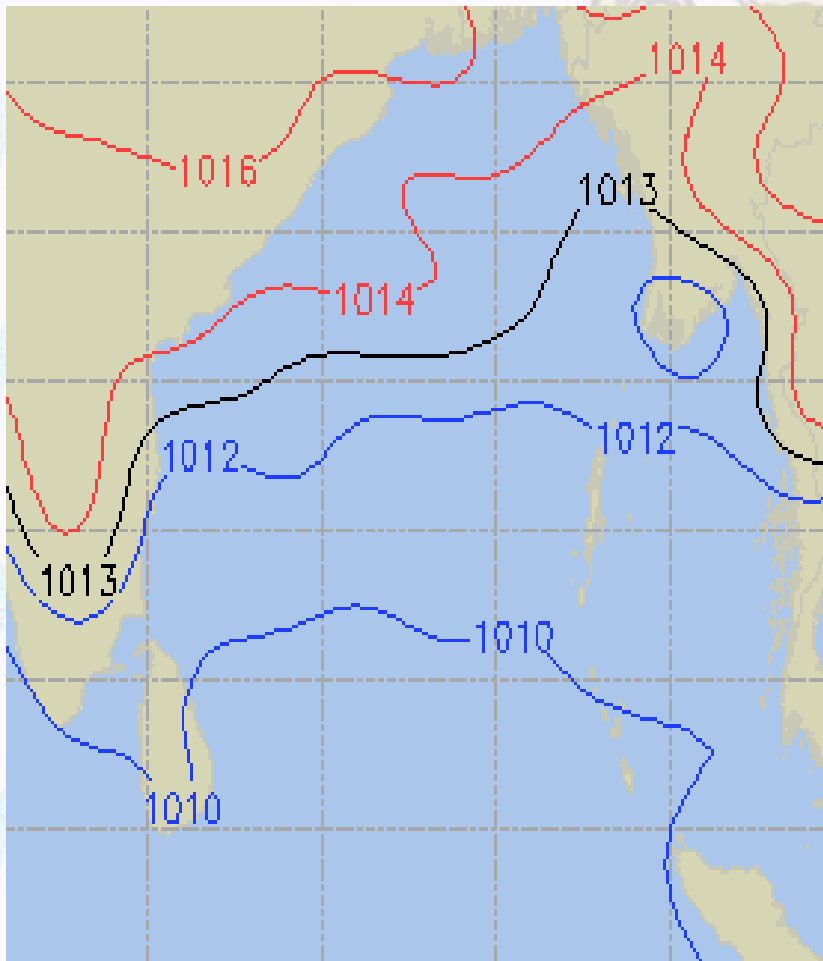
21 Dec 20 Monday



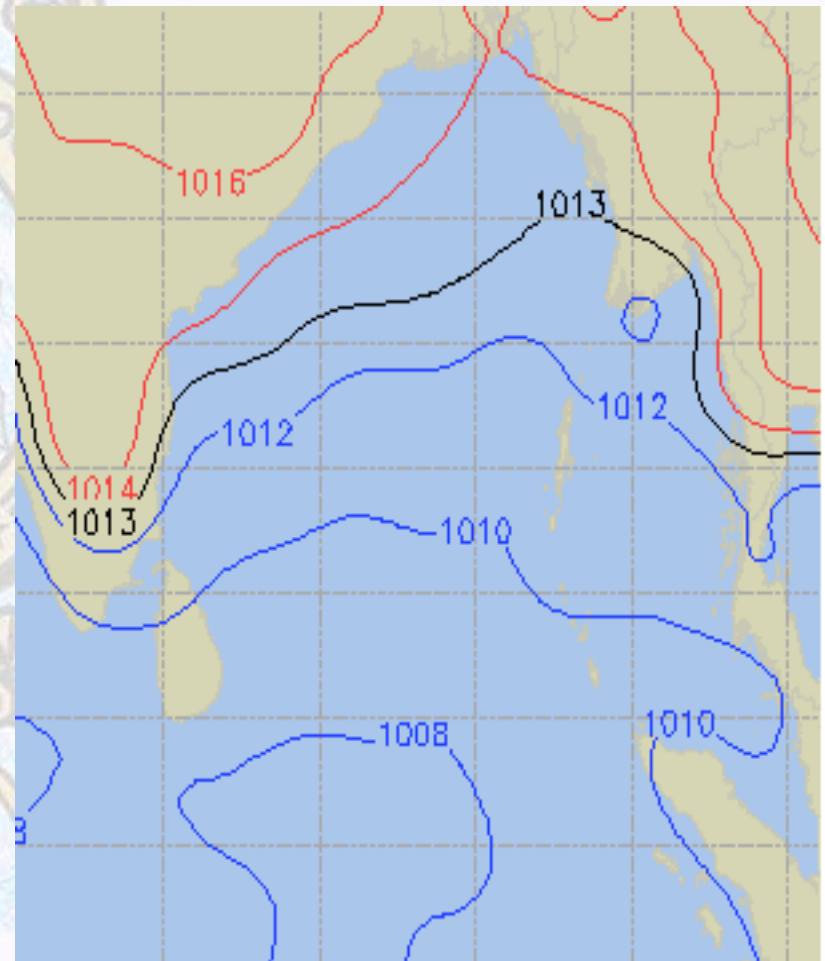


Surface Pressure forecast– 20 & 21 Dec 2020

20 Dec 20 Sunday



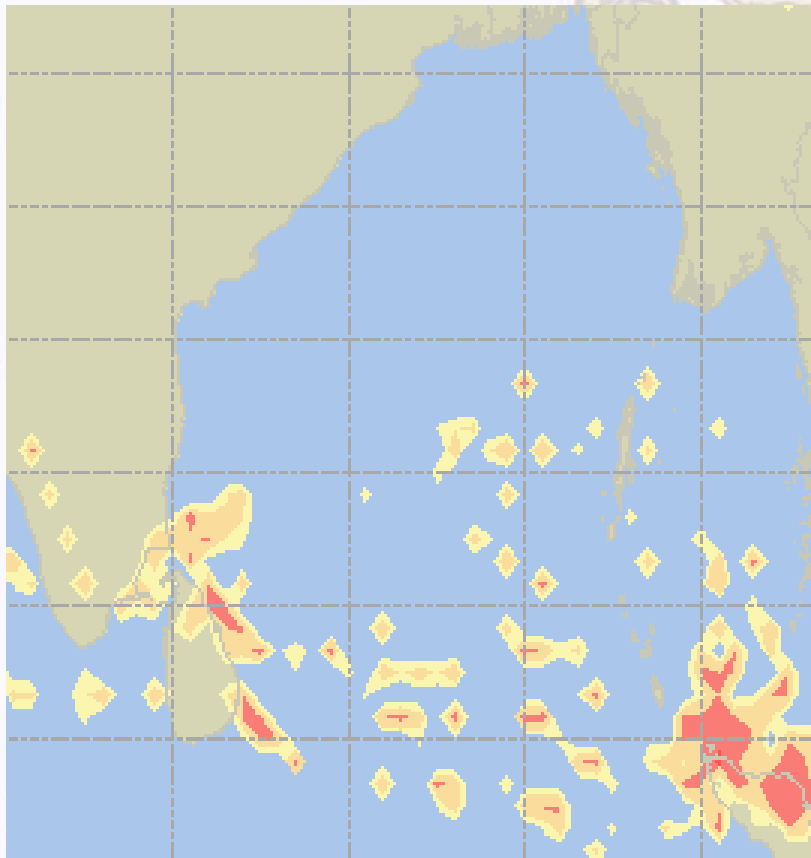
21 Dec 20 Monday



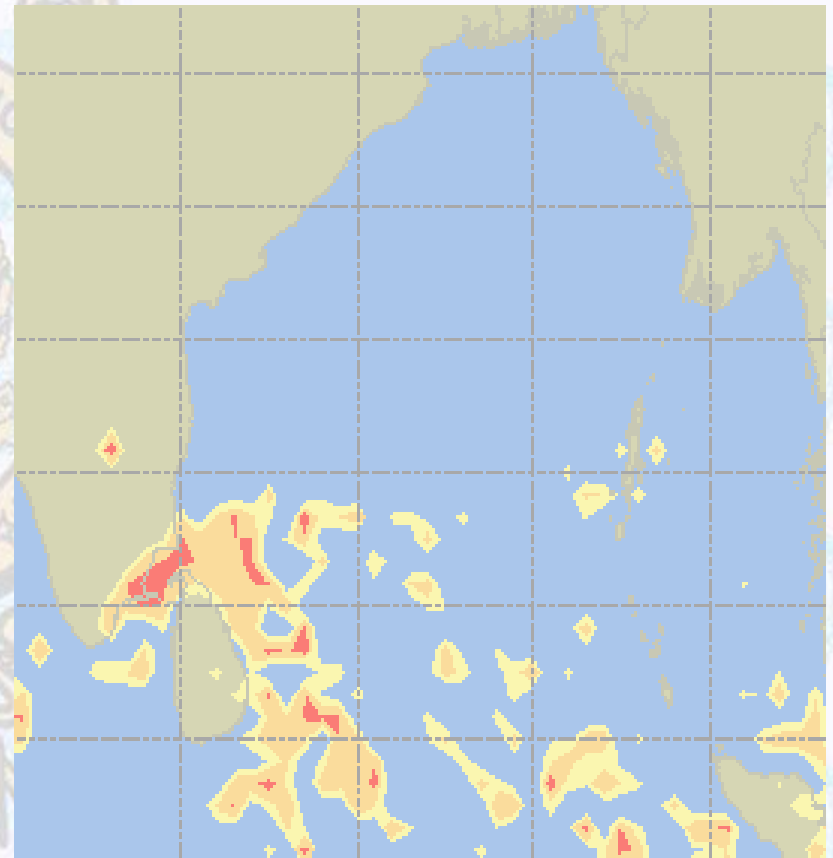


Visibility at Sea Forecast – 20 & 21 Dec 2020

20 Dec 20 Sunday



21 Dec 20 Monday



Visibility Scale:

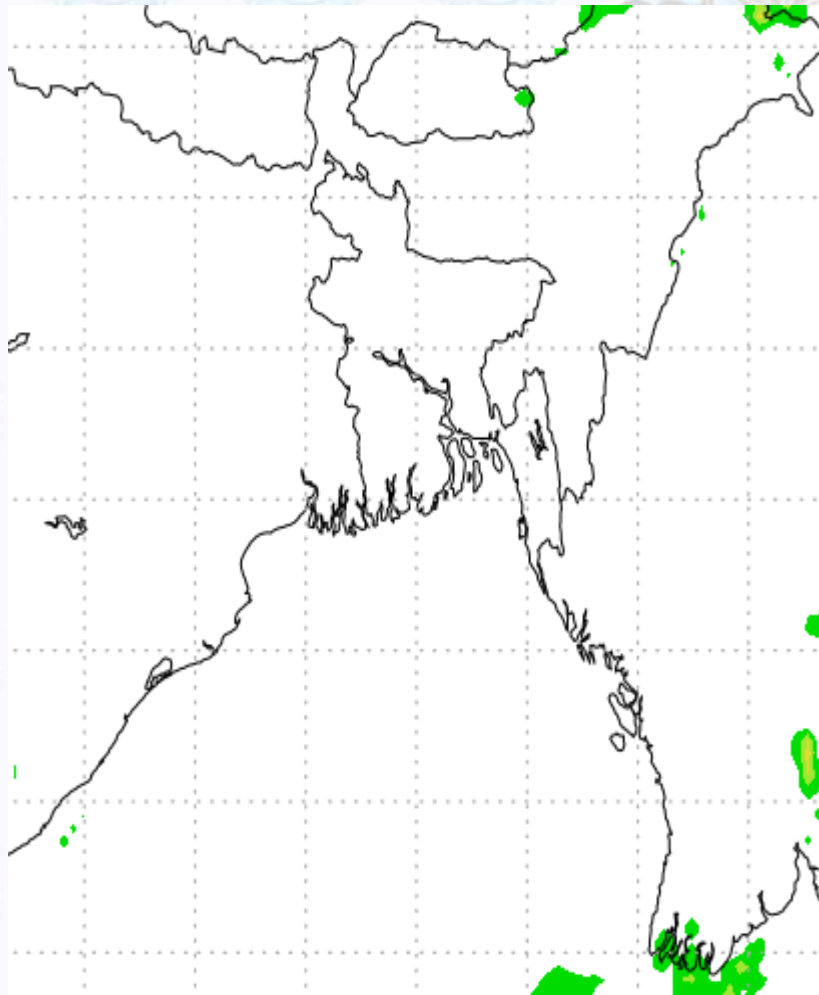


Ref (Slide 12-18): <http://www.weatheronline.co.uk/marine/weather?LEVEL>

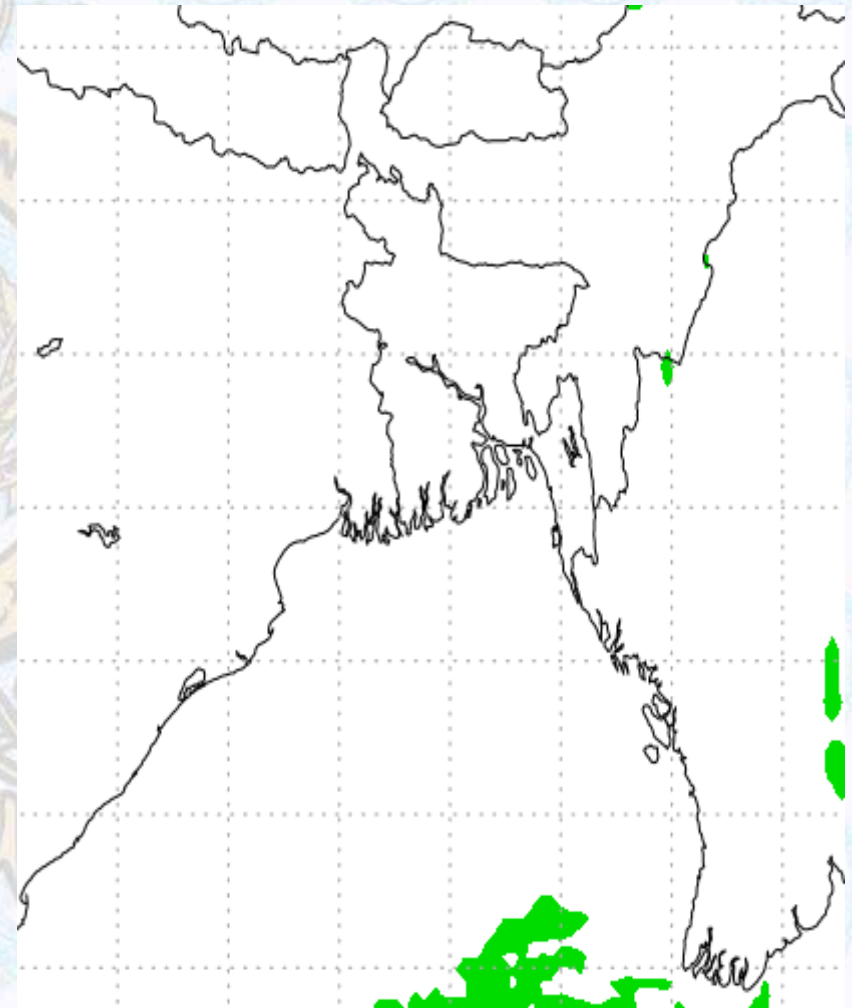


Precipitation

Rain(mm) 20 & 21 Dec2020



Rain(mm) 21 & 22 Dec2020



Precipitation Scale (mm):





Tidal Information

KHAL NO. 10

COX'S BAZAR

HIRAN POINT

	Time	Height		Time	Height		Time	Height
		0426		4.22			0205	3.08
20 Dec 2020	1115	0.69		0844	0.81		0841	0.92
	1709	3.78		1432	2.63		1436	2.41
	2321	1.10		2059	0.91		2036	1.11
	Time	Height		Time	Height		Time	Height
		0519		3.95			0252	2.84
21 Dec 2020	1206	0.83		0928	0.94		0925	1.01
	1810	3.65		1524	2.49		1528	2.34
	-	-		2151	1.04		2129	1.25
	Time	Height		Time	Height		Time	Height
		0022		1.29			0344	2.61
22 Dec 2020	0619	3.67		1023	1.06		1017	1.08
	1304	0.97		1626	2.39		1631	2.29
	1919	3.57		2255	1.14		2235	1.36