



WEATHER FORECAST FOR BN

14 - 17 DEC 2020



WEATHER FORECAST – DHAKA

14.12.2020

Hourly	2 PM	4 PM	8 PM	11 PM
Temp. / Dew Point	25 / 18	25 / 17	22 / 17	21 / 17
Wind	9 km/h NNW	9 km/h NW	4 km/h WNW	3 km/h NNW
Humidity	63%	62%	73%	78%
Chance of Precip	1%	1%	4%	4%
Cloud Cover	1%	1%	2%	5%
Conditions	Sunny	Sunny	Clear	Clear
Sunrise Sunset	06: 33 AM 17: 13 PM			

Conditions

Pressure : 1014 hpa

Visibility : 0.6 km

Ref: <https://www.wunderground.com/weather/bd/dhaka>



WEATHER FORECAST – CHATTOGRAM

14.12.2020

Hourly	2 PM	4 PM	8 PM	11 PM
Temp. / Dew Point	27 / 18	27 / 19	23 / 19	21 / 18
Wind	12 km/h NNW	11 km/h NNW	10 km/h NNW	9 km/h N
Humidity	59%	63%	80%	86%
Chance of Precip.	1%	1%	4%	5%
Cloud Cover	1%	1%	1%	1%
Conditions	Sunny	Sunny	Clear	Clear
Sunrise	06: 24 AM			
Sunset	17: 11 PM			

Conditions

Pressure : 1014 hpa

Visibility : 3:54 Km

Ref: <https://www.wunderground.com/weather/bd/chittagong>



WEATHER FORECAST – KHULNA

14.12.2020

Hourly	2 PM	4 PM	8 PM	11 PM
Temp. / Dew Point	27 / 16	26 / 16	21 / 17	19 / 16
Wind	12 km/h N	11 km/h N	4 km/h N	3 km/h N
Humidity	54%	56%	77%	84%
Chance of Precip.	1%	1%	3%	5%
Cloud Cover	1%	1%	1%	4%
Conditions	Sunny	Sunny	Clear	Clear
Sunrise Sunset	06: 34 AM 17: 19 PM			

Conditions

Pressure : 1015 hpa

Visibility : 8.05 Km

Ref: <https://www.wunderground.com/weather/bd/khulna>



GENERAL WEATHER FORECAST – DHAKA

Description	15 Dec 2020	16 Dec 2020	17 Dec 2020
Temperature (C)	26°C/ 18°C	27°C/ 18°C	25°C/ 16°C
Summary	AM Fog / PM Sunny	AM Fog / PM Sunny	AM Fog / PM Sunny
Sun Rise/Set	6h33m54s/17h14m00s	6h34m24s/17h14m24s	6h34m54s/17h14m48s
Day Length	10h40m06s	10h40m00s	10h39m54s
Moon Rise/ Set	7:01AM 5:55PM	8:05AM 6:56PM	9:02AM 7:59PM
Moon Phase/ illu	New Moon, 1%	Waxing Crescent, 5%	Waxing Crescent, 12%
Nautical Twilight	05:39, 18:06	05:40, 18:07	05:41, 18:07
Civil Twilight	06:07, 17:37	06:09, 17:39	06:09, 17:39
Humidity	D : 69% N : 80%	D : 71% N : 80%	D : 67% N : 79%
Barometer (mb)	1015	1016	1016
Visibility	Moderate	Moderate	Moderate
Precip Chance	5%	5%	5%
Wind (mph)	9 Km/h NNW	10 Km/h NW	10 Km/h NW

Ref: <https://weather.com/weather/5day//BGXX0003:1:BG>



GENERAL WEATHER FORECAST– CHATTOGRAM

Description	15 Dec 2020	16 Dec 2020	17 Dec 2020
Temperature (C)	28°C/ 18°C	28°C/ 18°C	28°C/ 17°C
Summary	AM Fog / PM Sunny	AM Fog / PM Sunny	AM Fog / PM Sunny
Sun Rise/Set	6h25m00s/17h11m24s	6h25m30s/17h11m48s	6h26m00s/17h12m48s
Day Length	10h46m24s	10h46m18s	10h46m18s
Moon Rise/ Set	7:22AM 5:31PM	7:56AM 6:54PM	8:53AM 7:56PM
Moon Phase/ illu	New Moon, 1%	Waxing Crescent, 5%	Waxing Crescent, 12%
NauticalTwilight	05:31 18:01	05:32 18:04	05:33 18:04
Civil Twilight	05:59, 17:34	06:00, 17:36	06:01, 17:36
Humidity	D : 67% N : 84%	D : 68% N : 86%	D : 68% N : 85%
Barometer (mb)	1014	1015	1015
Visibility	Moderate	Moderate	Moderate
Precip Chance	5%	5%	5%
Wind (mph)	10 Km/h N	9 Km/h NNW	10 Km/h NNW

Ref: <https://weather.com/weather/5day//BGXX0002:1:BG>



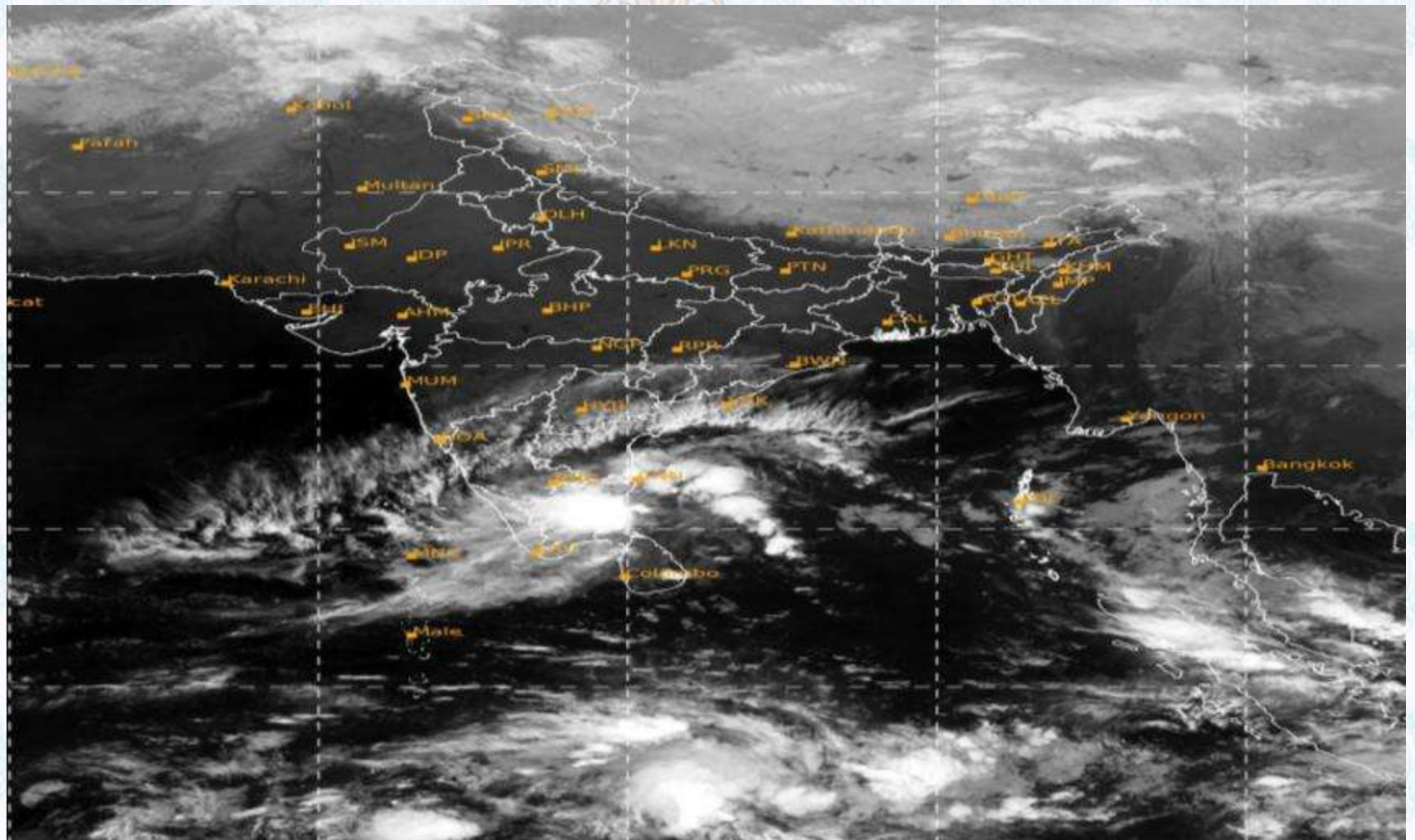
GENERAL WEATHER FORECAST – KHULNA

Description	15 Dec 2020	16 Dec 2020	17 Dec 2020
Temperature(C)	26°C/ 17°C	26°C/ 17°C	25°C/ 15°C
Summary	AM Fog / PM Sunny	AM Fog / PM Sunny	AM Fog / PM Sunny
Sun Rise/Set	6h35m12s/17h19m30s	6h35m42s/17h19m54s	6h36m12s/17h20m18s
Day Length	10h44m18s	10h44m12s	10h44m06s
Moon Rise/Set	7:12AM 5:45PM	8:06AM 7:02PM	9:04AM 8:04PM
Moon Phase/illu	New Moon, 1%	Waxing Crescent, 5%	Waxing Crescent, 12%
Nautical Twilight	05:41, 18:11	05:42, 18:12	05:43, 18:12
Civil Twilight	06:09, 17:43	06:10, 17:44	06:11, 17:44
Humidity	D : 64% N : 77%	D : 66% N : 76%	D : 67% N : 79%
Barometer (mb)	1014	1016	1016
Visibility	Moderate	Moderate	Moderate
Precip Chance	5%	5%	5%
Wind (mph)	12 km/h NNW	12 km/h NNW	11 km/h NNW

Ref: <https://weather.com/weather/5day//BGXX0005:1:BG>



SATELLITE VIEW OF BAY OF BENGAL

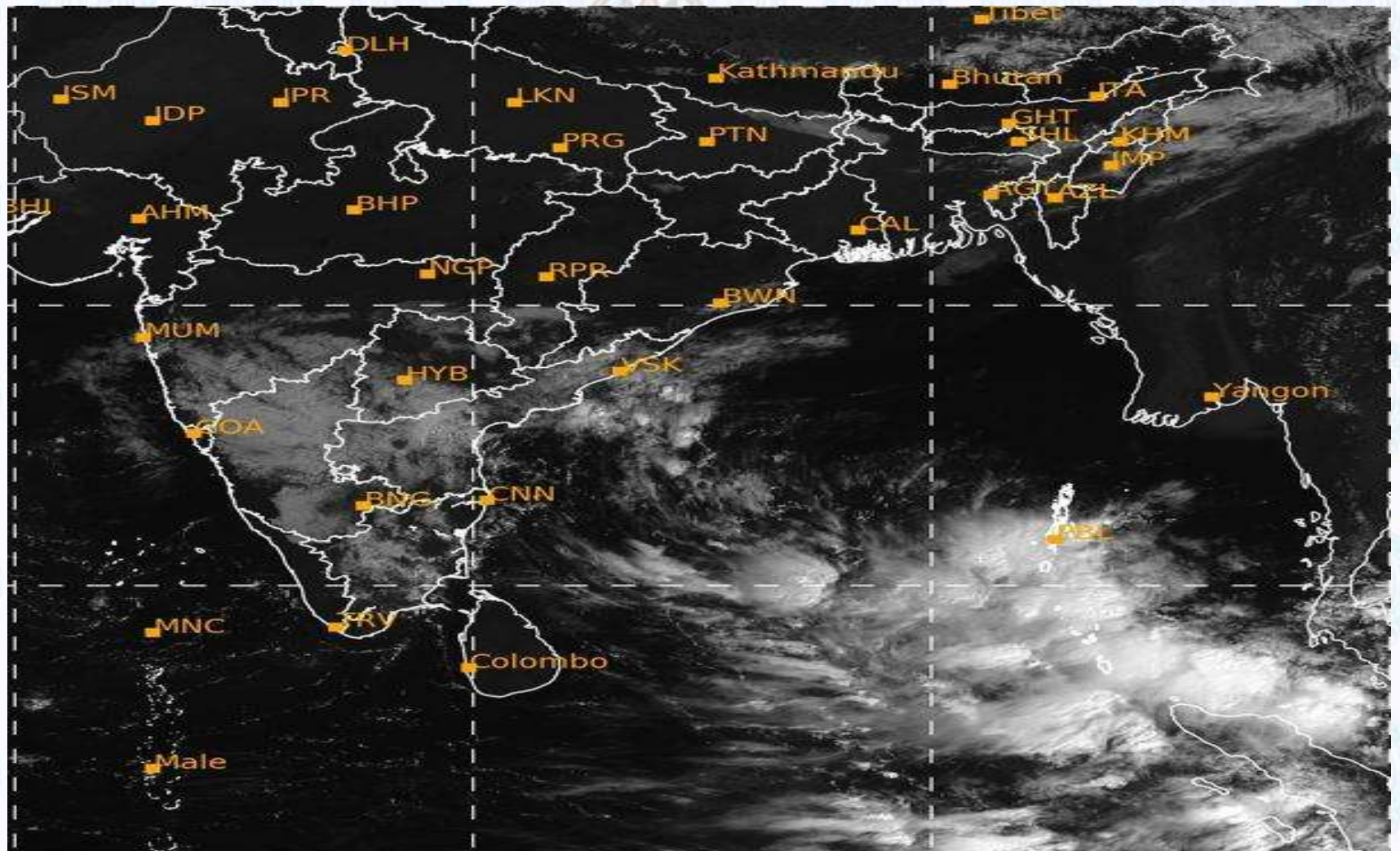


14/12/2020, 11:00 UTC MATSAT-IR

Ref: <http://satellite.imd.gov.in/insat.htm>



SATELLITE VIEW OF BAY OF BENGAL



14/12/2020, 11:00 MATSAT-VIS

Ref: <http://satellite.imd.gov.in/insat.htm>



Fleet Forecast Sea Area C-90 (Valid for 12 Hrs Commencing 1000 UTC of 14.12.2020)

Part One	NO STORM WARNING.	
Part Two	TROUGH OF LOW LIES OVER NORTH BAY.	
Part Three	Weather	TEMPORARY PARTLY CLOUDY OVER AREA C-90.
	Wind	NORTH-WEST/NORTHERLY, 08-12 KTS.
	Visibility	03-05 KMS, REDUCING TO 1000 M OR LESS IN MIST/FOG.
	Outlook	FOR SUBSEQUENT 12 HOURS: LITTLE CHANGE.
	MSL Pressure	AT = 14,0000 UTC. CHATTOGRAM =1013 HPA



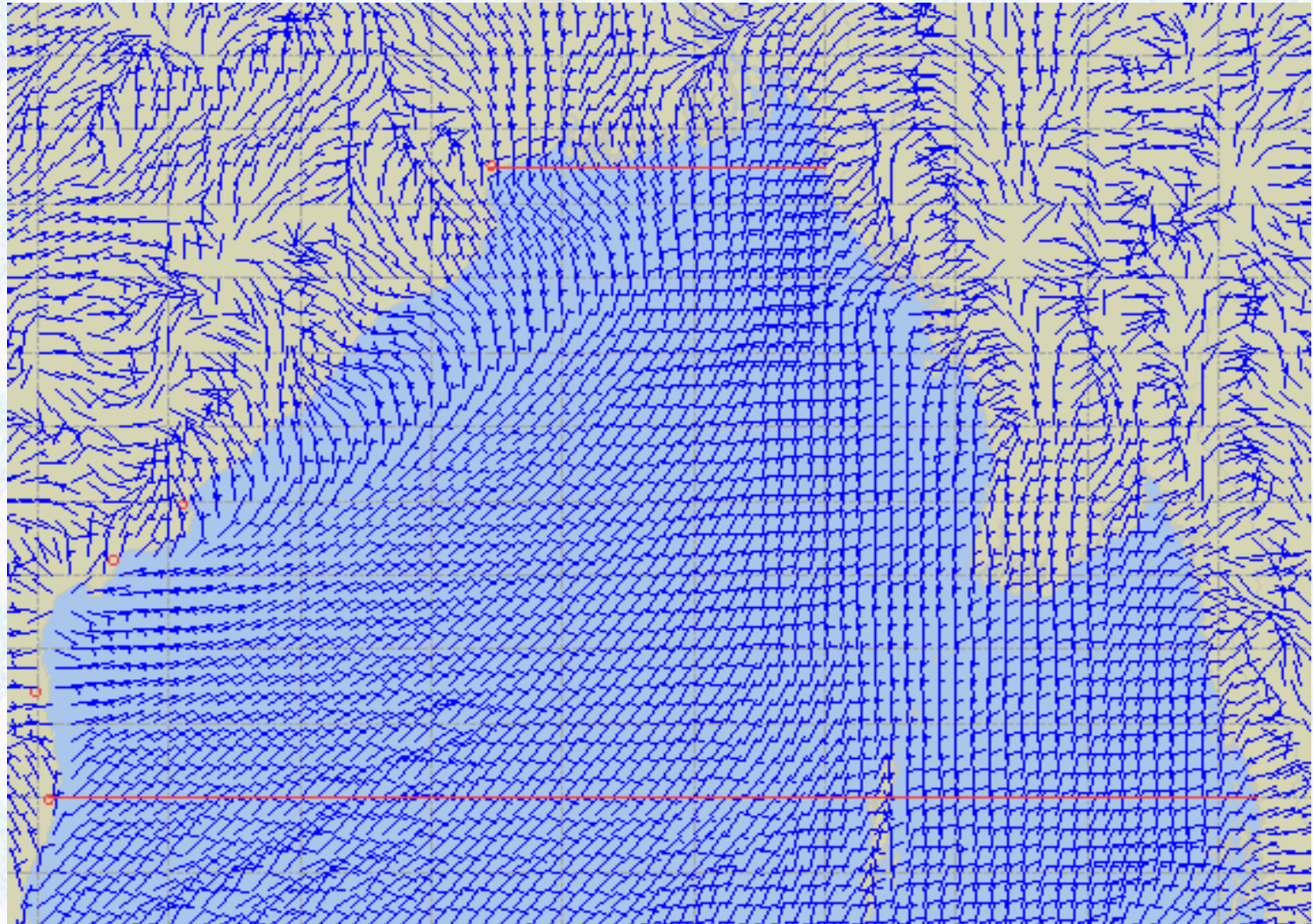
Inland River Port Warning **(VALID TILL 06 PM OF 14.12.2020)**

LIGHT TO MODERATE TO FOG MAY REDUCE SURFACE VISIBILITY TO 800M OR LESS AT PLACES OVER THE RIVERBASINS OF THE COUNTRY DURING NEXT 02-03 HRS COMMENCING 09.00 AM OF 14.12.2020 WHEREIN RIVERCRAFTS SHALL PROCEED WITH CAUTION BUT NO SIGNAL IS TO BE HOISTED.

Ref: <http://www.bmd.gov.bd/?/home>



Surface Wind Forecast- 15 Dec - 2020



Legend:



**Calm
Winds**



5 Knots



10 Knots



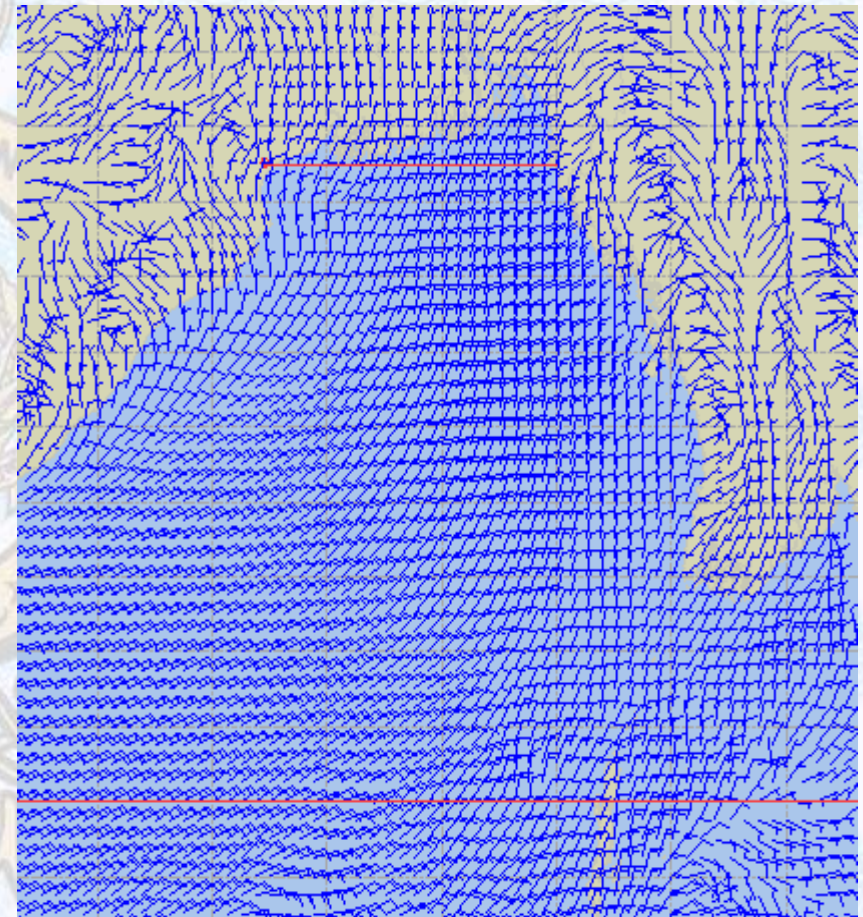
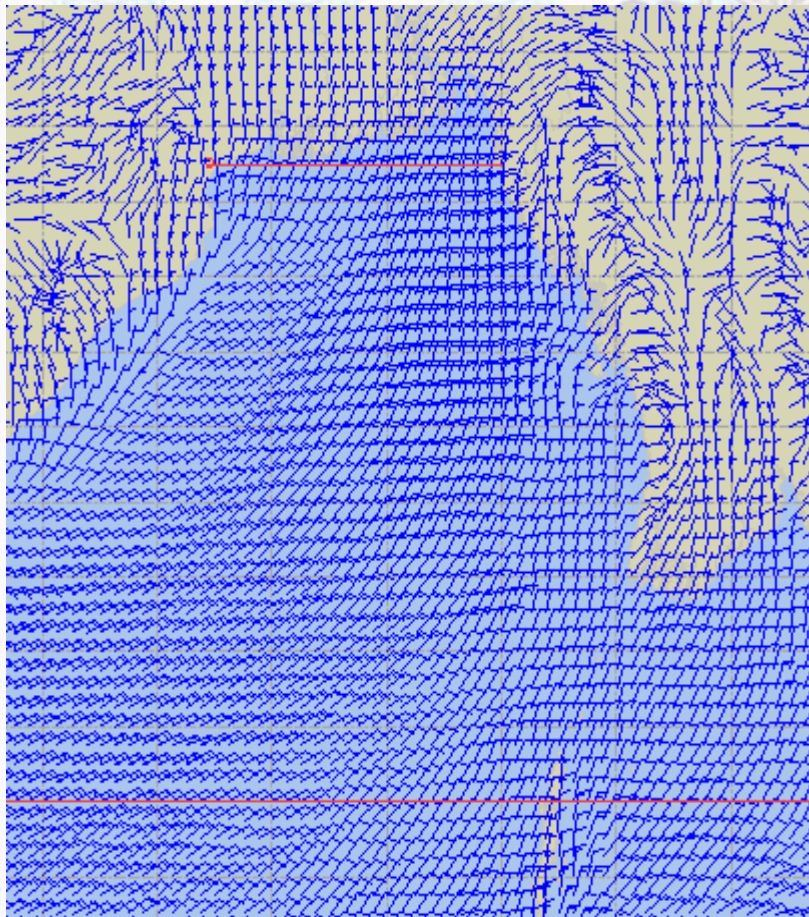
60 Knots



Surface Wind Forecast – 16 & 17 Dec - 2020

16 Dec 20 Wednesday

17 Dec 20 Thursday



Legend:



Calm
Winds



5 Knots



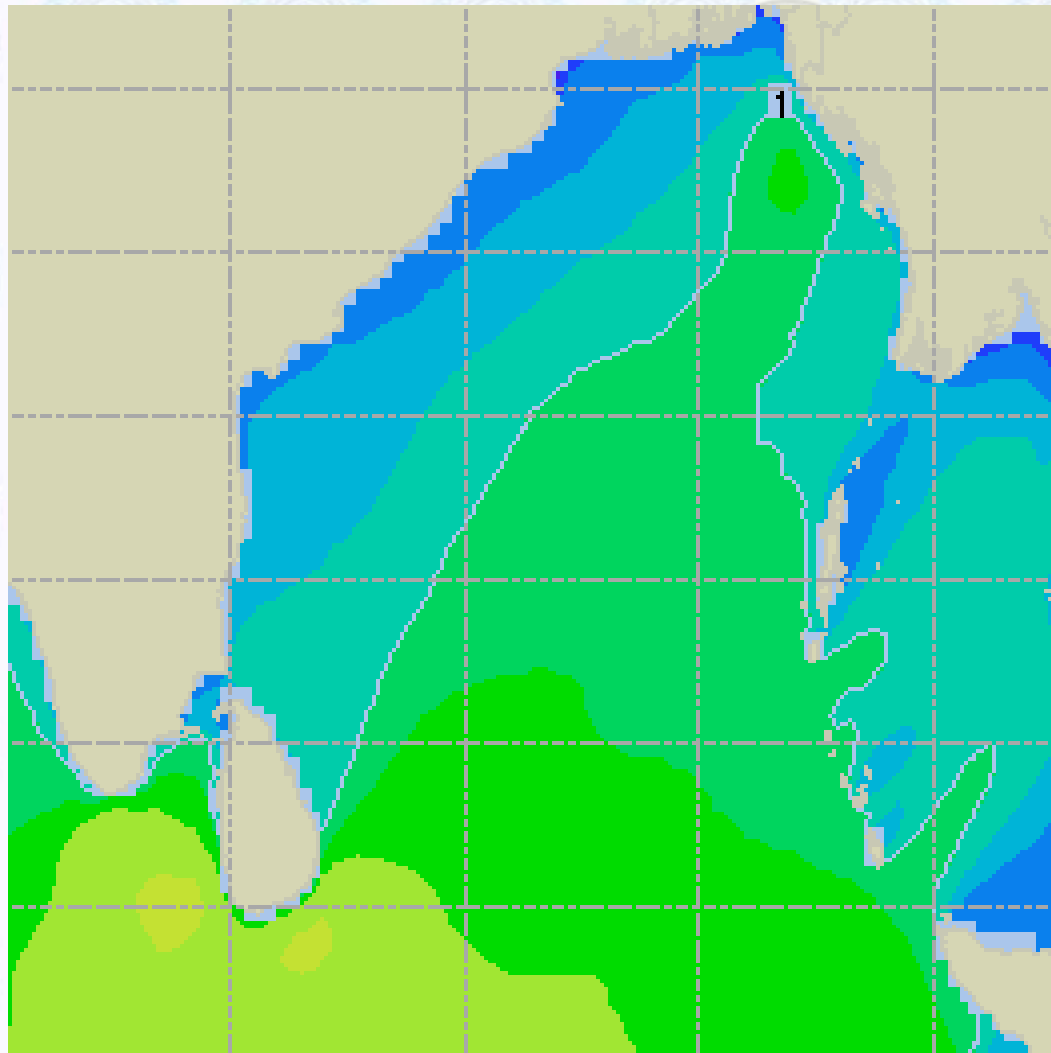
10 Knots



60 Knots



Sea State Forecast – 15 Dec - 2020



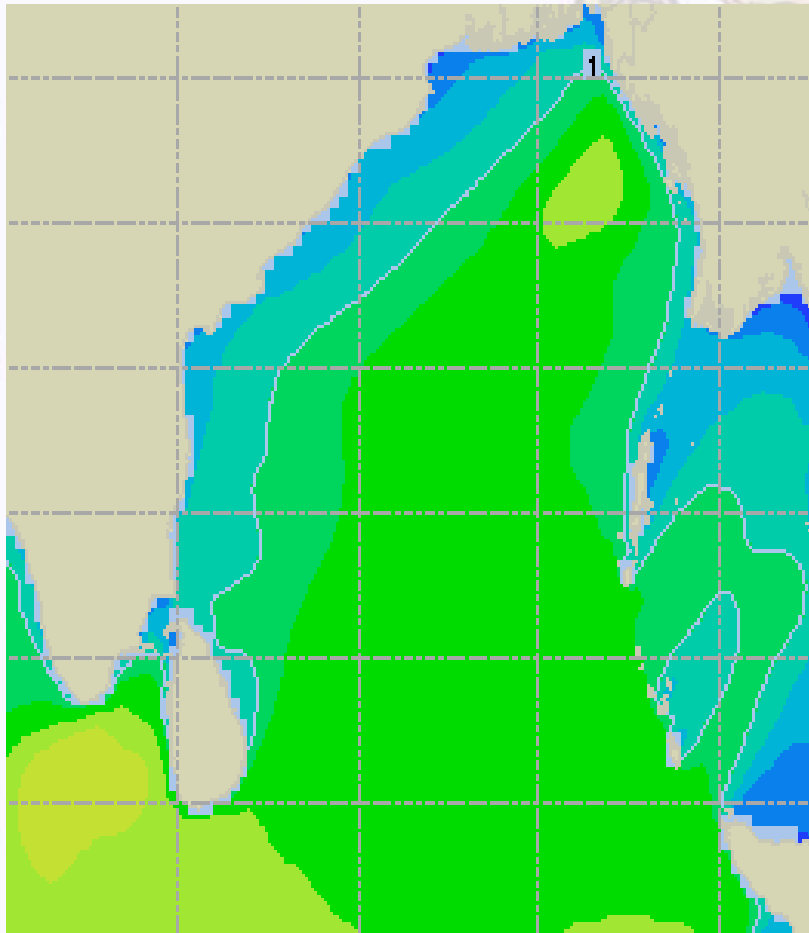
Sea State	Ht (m)
0	0-0.1
1	0-0.1
2	0.1-0.5
3	0.5-1.25
4	1.25-2.5
5	2.5-4.0
6	4-6
7	6-9
8	9-14
9	Over 14



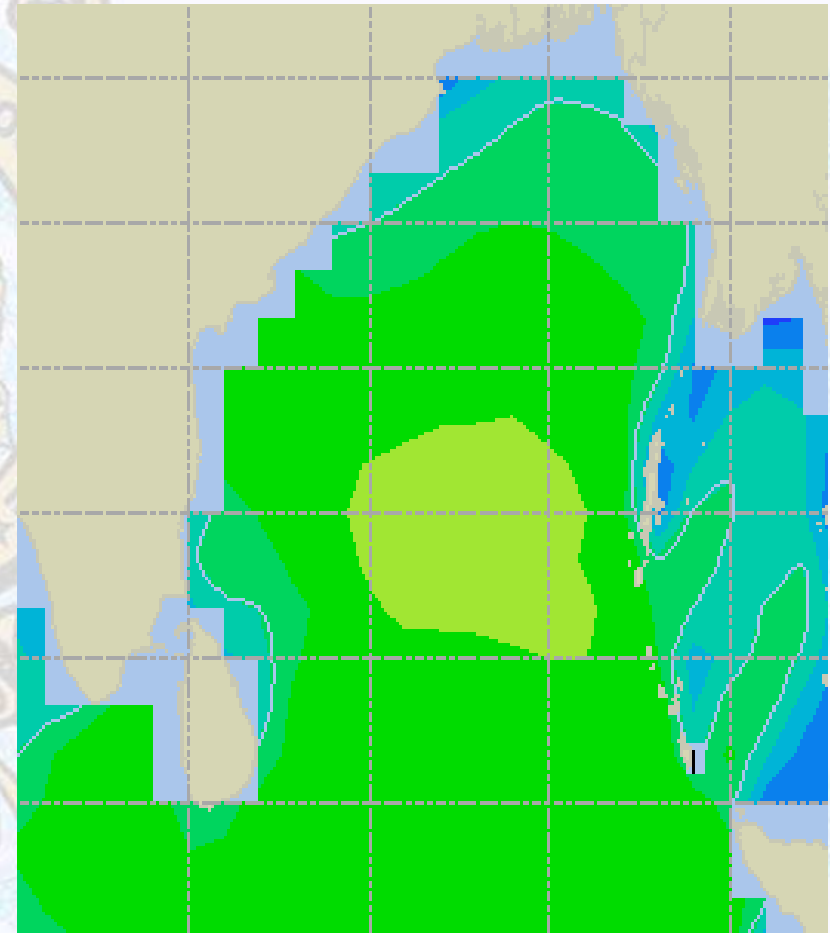


Sea State Forecast – 16 & 17 Dec - 2020

16 Dec 20 Wednesday



17 Dec 20 Thursday

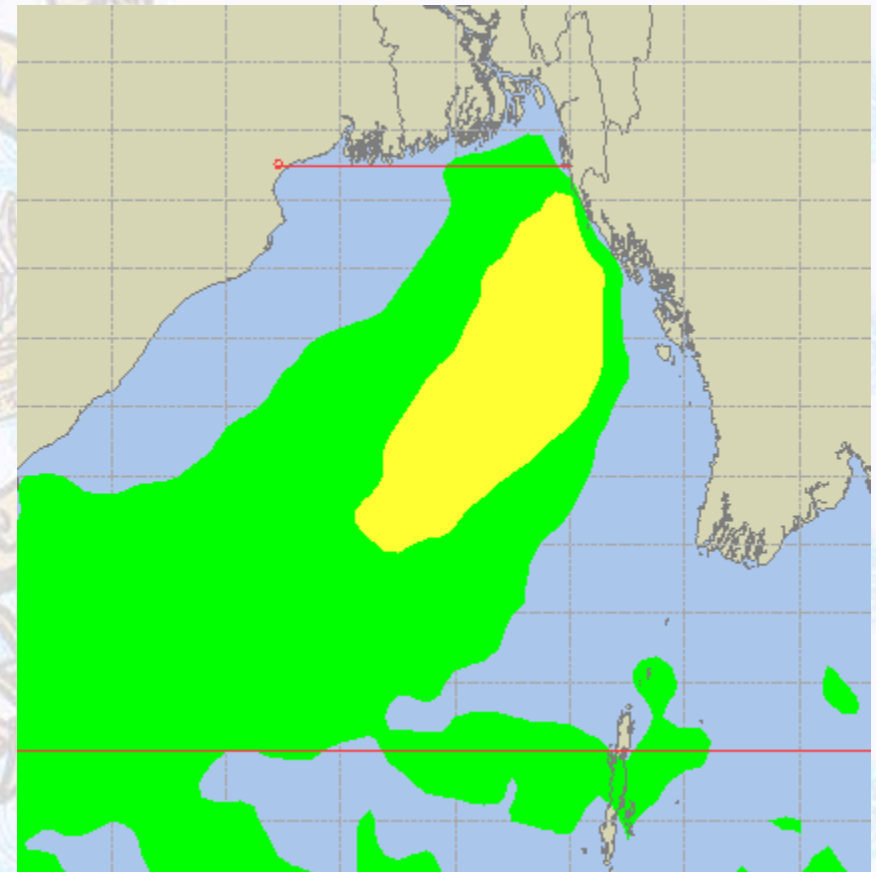
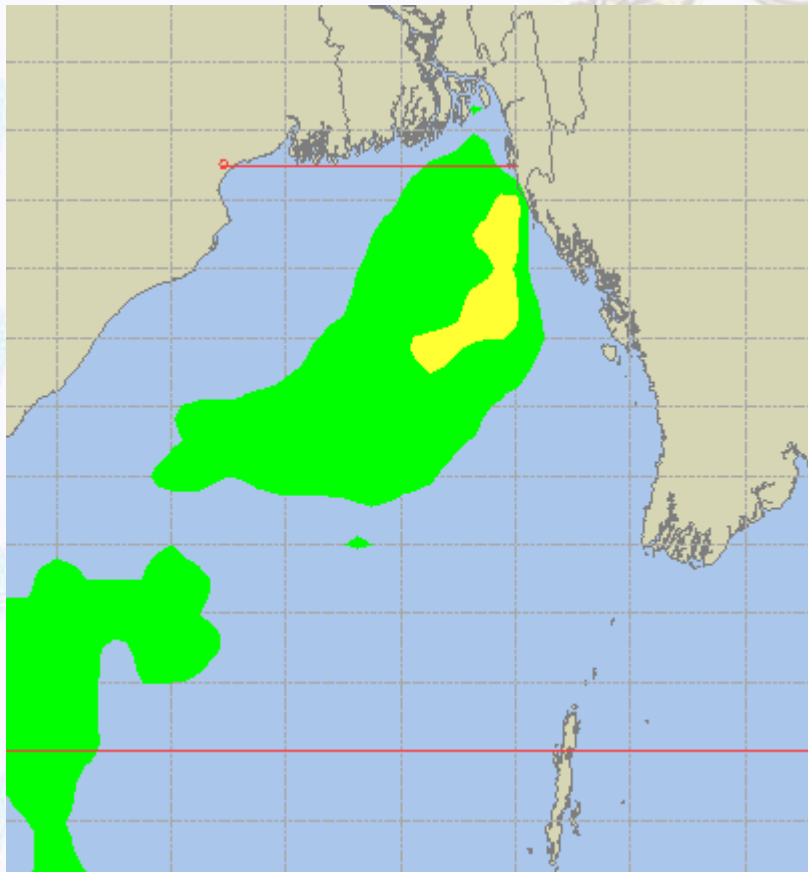




Peak Gusting Possibilities— 15 & 16 Dec 2020

15 Dec 20 Tuesday

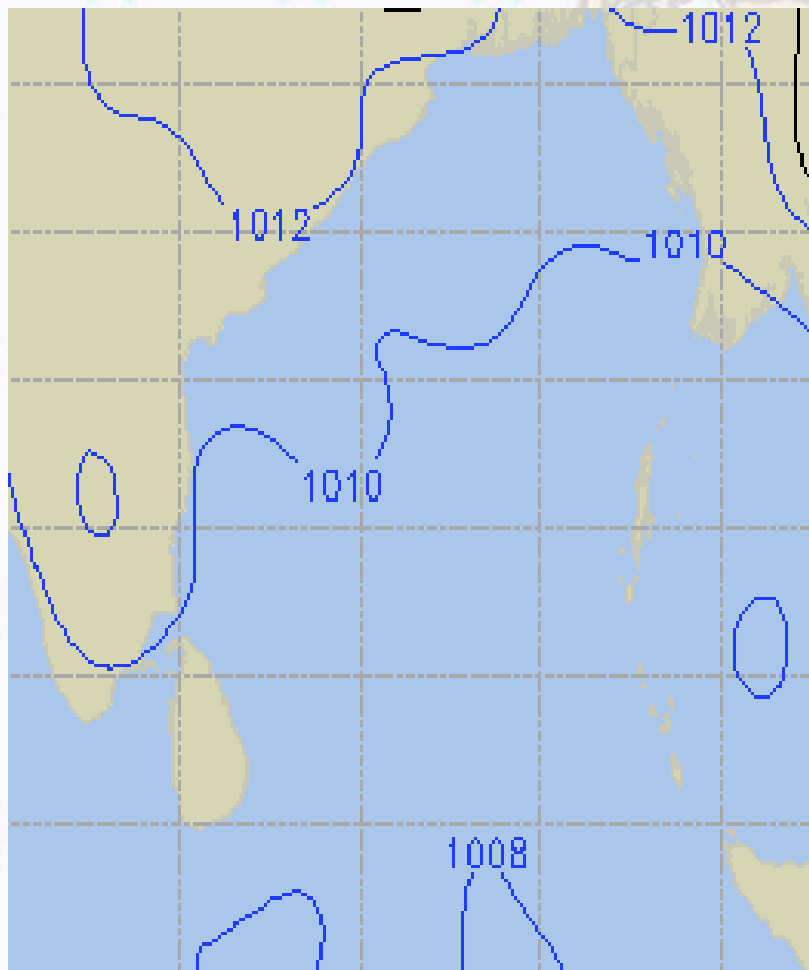
16 Dec 20 Wednesday



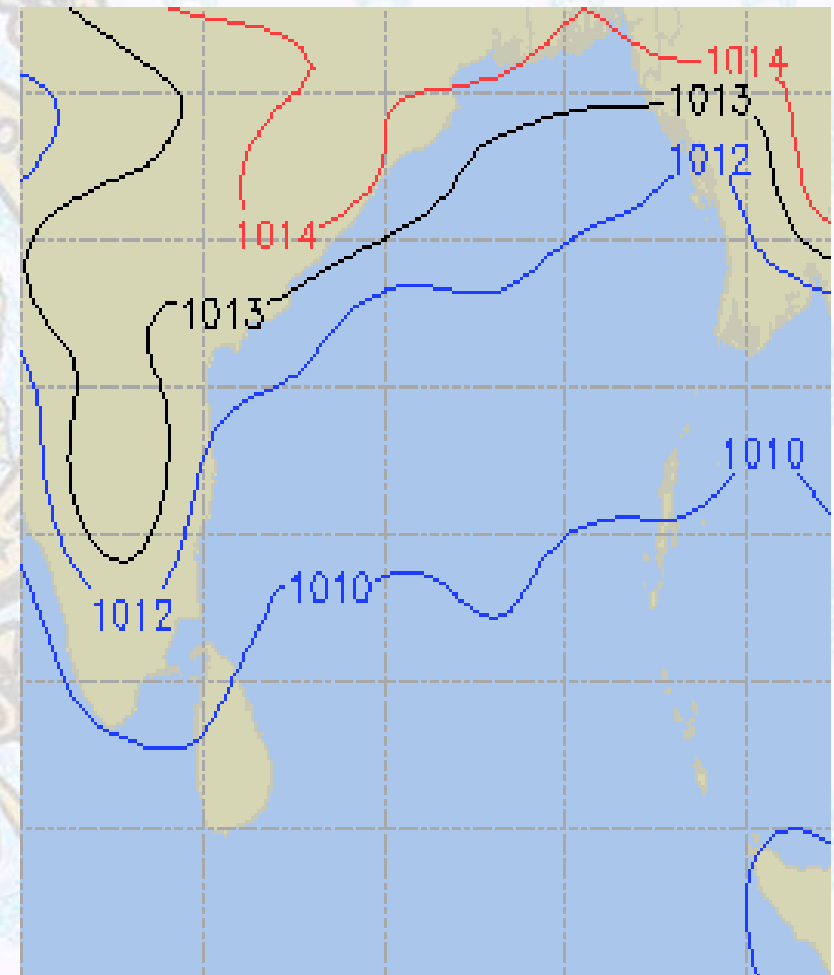


Surface Pressure forecast– 15 & 16 Dec 2020

15 Dec 20 Tuesday



16 Dec 20 Wednesday

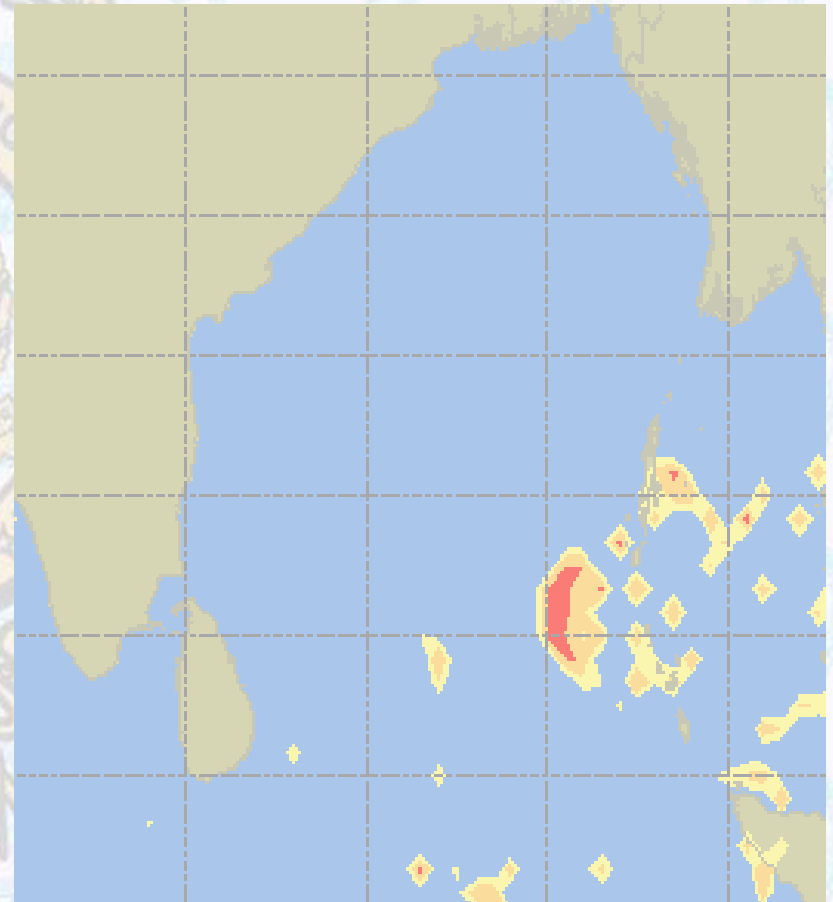
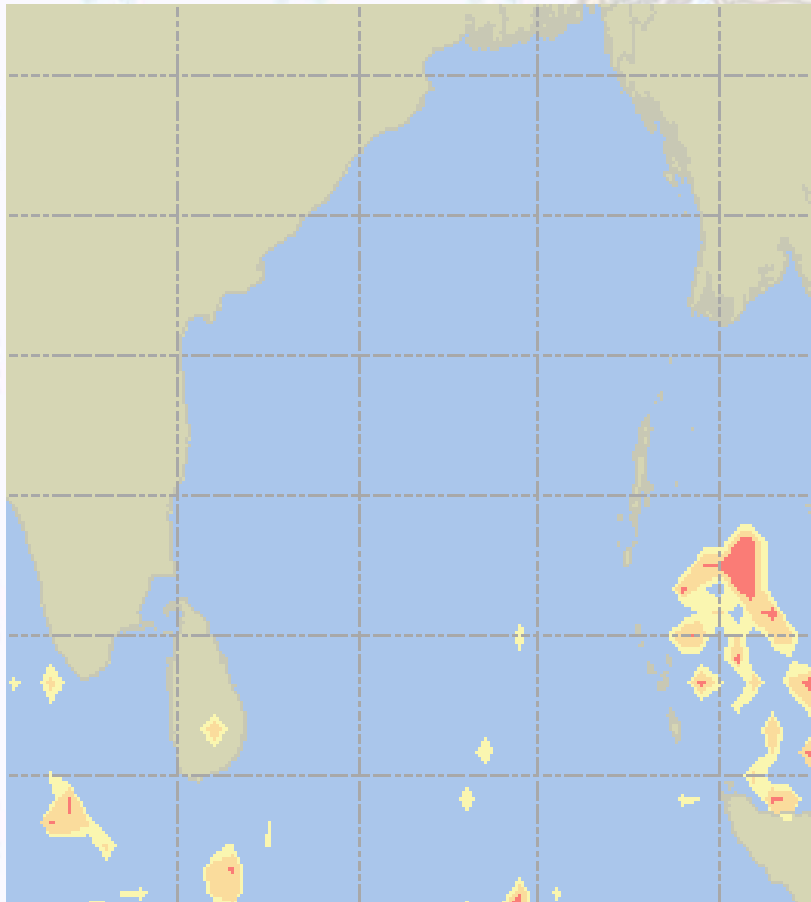




Visibility at Sea Forecast – 15 & 16 Dec 2020

15 Dec 20 Tuesday

16 Dec 20 Wednesday



Visibility Scale:



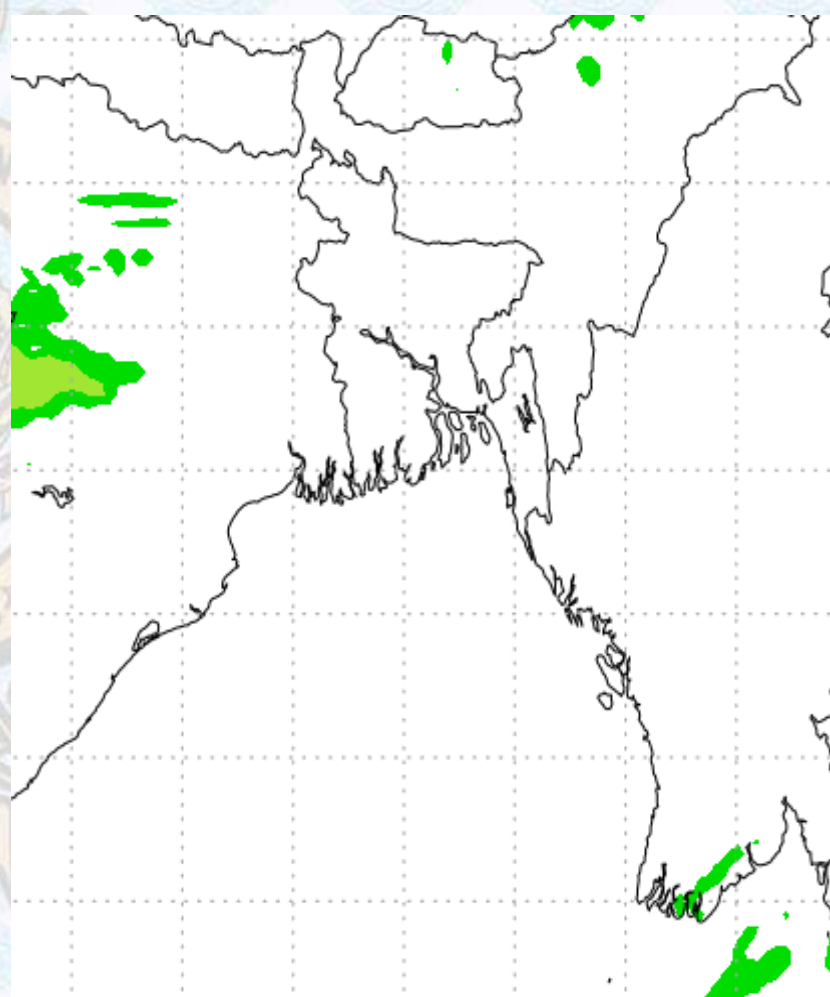
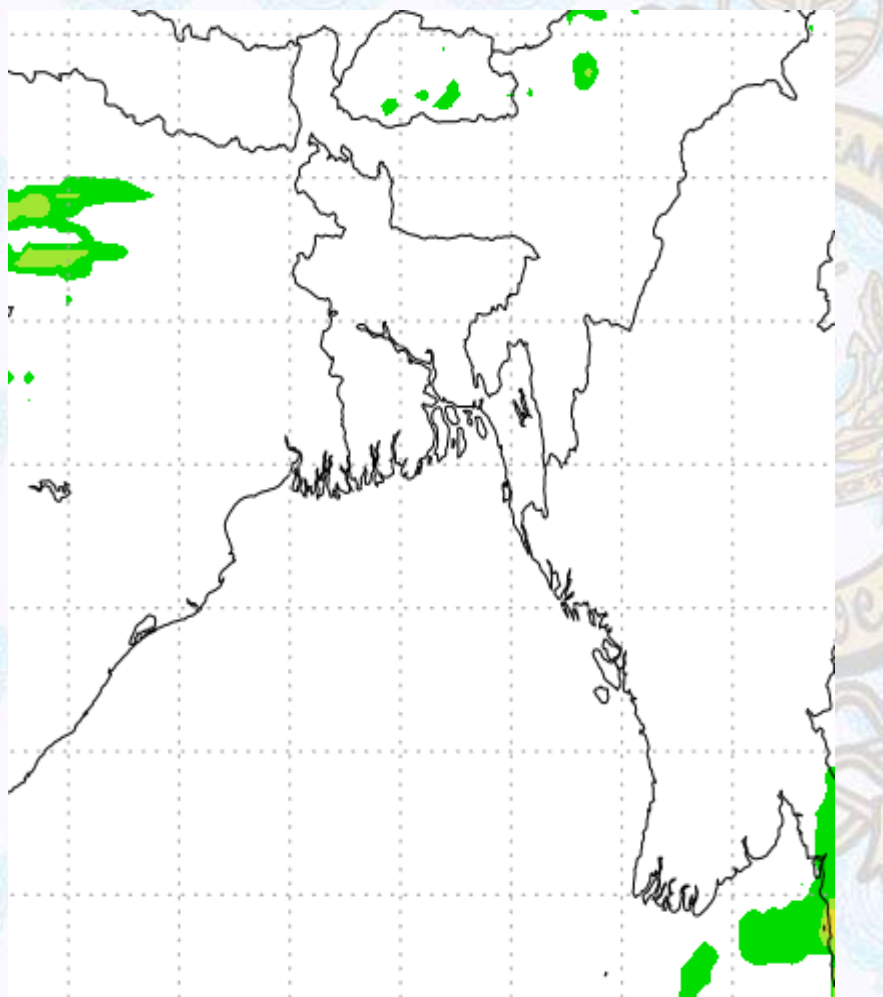
Ref (Slide 12-18): <http://www.weatheronline.co.uk/marine/weather?LEVEL>



Precipitation

Rain(mm) 15 & 16 Dec2020

Rain(mm) 16 & 17 Dec2020



Precipitation Scale (mm):





Tidal Information

KHAL NO. 10

COX'S BAZAR

HIRAN POINT

	Time	Height		Time	Height		Time	Height
15 Dec 2020	0051	4.73		0516	0.45		0507	0.64
	0738	0.40		1048	3.20		1057	2.75
	1318	4.19		1728	0.83		1708	0.52
	1941	0.39		2312	3.69		2318	3.16
16 Dec 2020	Time	Height		Time	Height		Time	Height
	0132	4.72		0600	0.44		0110	4.19
	0821	0.40		1132	3.17		0843	0.52
	1400	4.19		1811	0.41		1350	3.80
	2022	0.45		2356	3.62		2037	0.65
17 Dec 2020	Time	Height		Time	Height		Time	Height
	0213	4.68		0642	0.48		0000	3.10
	0903	0.43		1216	3.08		0635	0.67
	1443	4.14		1852	0.50		1224	2.67
	2102	0.55		-	-		1830	0.68