



WEATHER FORECAST FOR BN

13 - 16 DEC 2020





WEATHER FORECAST – DHAKA

13.12.2020

Hourly	2 PM	4 PM	8 PM	11 PM
Temp. / Dew Point	25 / 19	25 / 18	23 / 18	21 / 18
Wind	8 km/h WNW	8 km/h WNW	3 km/h W	2 km/h NW
Humidity	68%	68%	77%	81%
Chance of Precip	1%	1%	4%	5%
Cloud Cover	30%	25%	11%	18%
Conditions	Partly Cloudy	Partly Cloudy	Clear	Clear
Sunrise Sunset	06: 32 AM 17: 13 PM			

Conditions

Pressure : 1014 hpa

Visibility : 0.84 km

Ref: <https://www.wunderground.com/weather/bd/dhaka>



WEATHER FORECAST – CHATTOGRAM

13.12.2020

Hourly	2 PM	4 PM	8 PM	11 PM
Temp. / Dew Point	25 / 18	25 / 19	23 / 20	22 / 19
Wind	10 km/h NW	9 km/h NW	km/h NNW	9 km/h N
Humidity	67%	68%	83%	87%
Chance of Precip.	1%	1%	4%	5%
Cloud Cover	2%	2%	3%	4%
Conditions	Sunny	Sunny	Clear	Clear
Sunrise	06: 23 AM			
Sunset	17: 10 PM			

Conditions

Pressure : 1014 hpa

Visibility : 3:54 Km

Ref: <https://www.wunderground.com/weather/bd/chittagong>



WEATHER FORECAST – KHULNA

13.12.2020

Hourly	2 PM	4 PM	8 PM	11 PM
Temp. / Dew Point	26 / 18	26 / 17	21 / 18	20 / 17
Wind	9 km/h NNW	8 km/h NNW	1 km/h NW	2 km/h WNW
Humidity	59%	60%	81%	87%
Chance of Precip.	1%	1%	4%	5%
Cloud Cover	11%	11%	3%	13%
Conditions	Sunny	Sunny	Clear	Clear
Sunrise Sunset	06: 34 AM 17: 18 PM			

Conditions

Pressure : 1014 hpa

Visibility : 8.05 Km

Ref: <https://www.wunderground.com/weather/bd/khulna>



GENERAL WEATHER FORECAST – DHAKA

Description	14 Dec 2020	15 Dec 2020	16 Dec 2020
Temperature (C)	26 °C / 18 °C	26 °C / 18 °C	26 °C / 18 °C
Summary	AM Fog / PM Sunny	AM Fog / PM Sunny	AM Fog / PM Sunny
Sun Rise/Set	6h33m24s/17h13m36s	6h33m54s/17h14m00s	6h34m24s/17h14m24s
Day Length	10h40m12s	10h40m06s	10h40m00s
Moon Rise/ Set	5:54AM 4:56PM	7:01AM 5:55PM	8:05AM 6:56PM
Moon Phase/ illu	New Moon, 0%	New Moon, 1%	Waxing Crescent, 5%
Nautical Twilight	05:39, 18:06	05:39, 18:06	05:40, 18:07
Civil Twilight	06:07, 17:37	06:07, 17:37	06:09, 17:39
Humidity	D : 73% N : 82%	D : 69% N : 80%	D : 71% N : 80%
Barometer (mb)	1013	1015	1016
Visibility	Moderate	Moderate	Moderate
Precip Chance	5%	5%	5%
Wind (mph)	8 Km/h NNW	11 Km/h NNW	11 Km/h NW

Ref: <https://weather.com/weather/5day//BGXX0003:1:BG>



GENERAL WEATHER FORECAST– CHATTOGRAM

Description	14 Dec 2020	15 Dec 2020	16 Dec 2020
Temperature (C)	28 °C/ 18 °C	28 °C/ 18 °C	28 °C/ 18 °C
Summary	AM Fog / PM Sunny	AM Fog / PM Sunny	AM Fog / PM Sunny
Sun Rise/Set	6h24m30s/17h11m00s	6h25m00s/17h11m24s	6h25m30s/17h11m48s
Day Length	10h46m30s	10h46m24s	10h46m18s
Moon Rise/ Set	5:45AM 4:53PM	7:22AM 5:31PM	7:56AM 6:54PM
Moon Phase/ illu	New Moon, 0%	New Moon, 1%	Waxing Crescent, 5%
NauticalTwilight	05:31 18:01	05:31 18:01	05:32 18:41
Civil Twilight	05:59, 17:34	05:59, 17:34	06:00, 17:36
Humidity	D : 71% N : 86%	D : 67% N : 84%	D : 68% N : 87%
Barometer (mb)	1012	1014	1015
Visibility	Moderate	Moderate	Moderate
Precip Chance	5%	5%	5%
Wind (mph)	11 Km/h N	10 Km/h N	10 Km/h NNW

Ref: <https://weather.com/weather/5day//BGXX0002:1:BG>



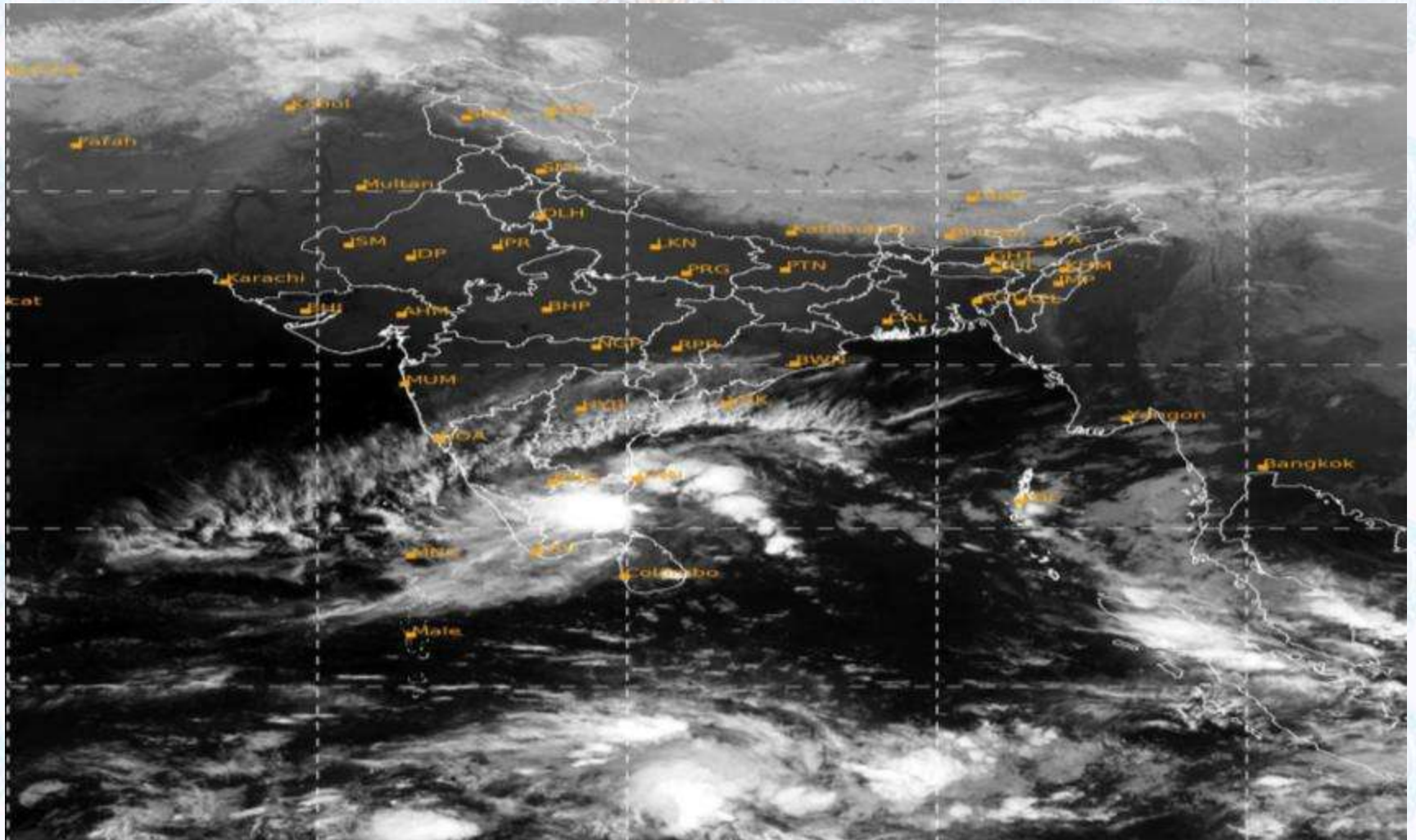
GENERAL WEATHER FORECAST – KHULNA

Description	14 Dec 2020	15 Dec 2020	16 Dec 2020
Temperature(C)	28°C/ 18°C	28°C/ 18°C	28°C/ 18°C
Summary	AM Fog / PM Sunny	AM Fog / PM Sunny	AM Fog / PM Sunny
Sun Rise/Set	6h34m42s/17h19m00s	6h35m12s/17h19m30s	6h35m42s/17h19m54s
Day Length	10h44m18s	10h44m18s	10h44m12s
Moon Rise/Set	5:56AM 5:02PM	7:12AM 5:45PM	8:06AM 7:02PM
Moon Phase/illu	New Moon, 0%	New Moon, 1%	Waxing Crescent, 5%
NauticalTwilight	05:41, 18:11	05:41, 18:11	05:42, 18:12
Civil Twilight	06:09, 17:43	06:09, 17:43	06:10, 17:44
Humidity	D : 70% N : 80%	D : 62% N : 75%	D : 65% N : 75%
Barometer (mb)	1012	1014	1016
Visibility	Moderate	Moderate	Moderate
Precip Chance	5%	5%	5%
Wind (mph)	10 km/h NNW	14 km/h N	12 km/h NNW

Ref: <https://weather.com/weather/5day//BGXX0005:1:BG>



SATELLITE VIEW OF BAY OF BENGAL

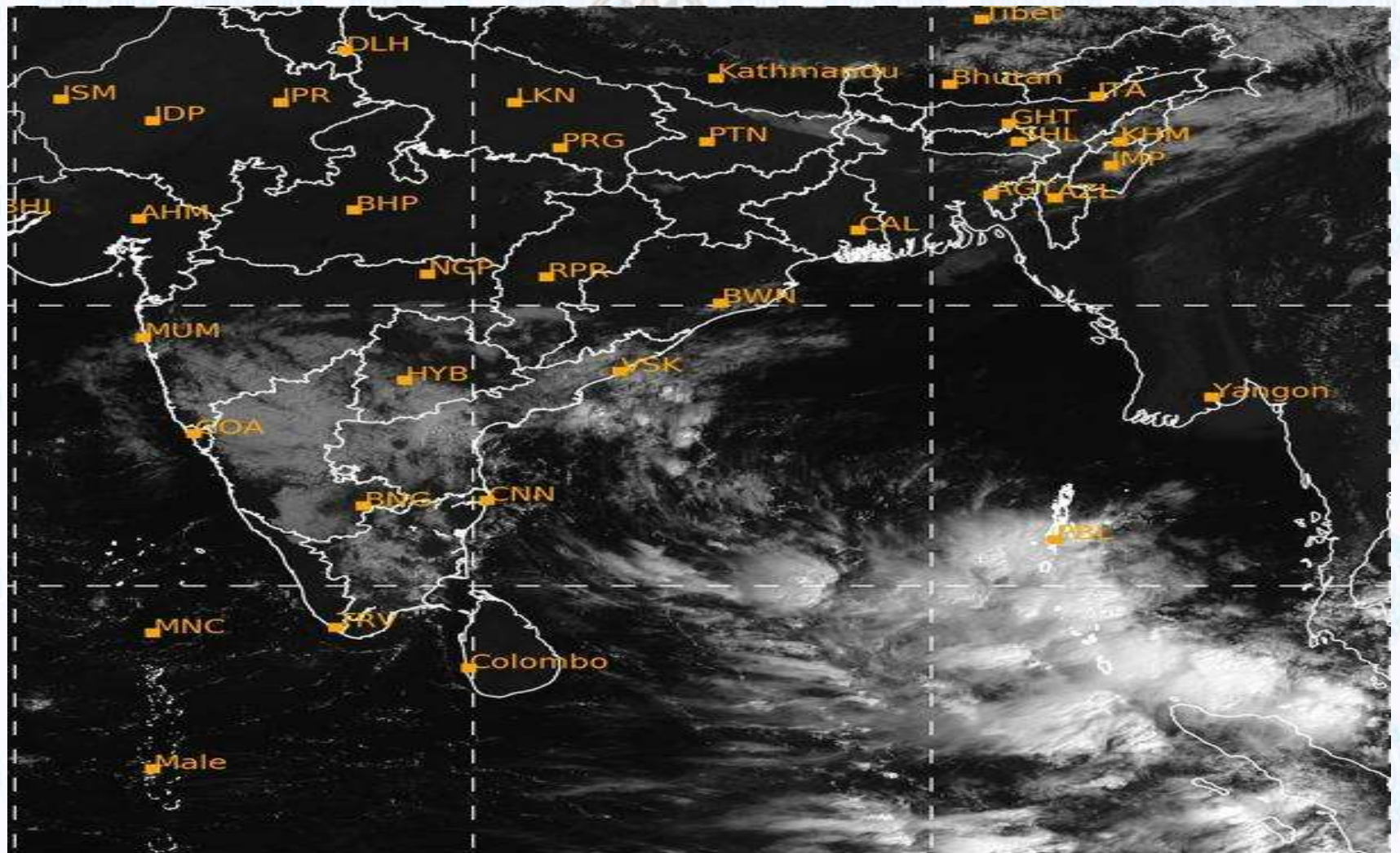


13/12/2020, 11:00 UTC MATSAT-IR

Ref: <http://satellite.imd.gov.in/insat.htm>



SATELLITE VIEW OF BAY OF BENGAL



13/12/2020, 11:00 MATSAT-VIS

Ref: <http://satellite.imd.gov.in/insat.htm>



Fleet Forecast Sea Area C-90 (Valid for 12 Hrs Commencing 1000 UTC of 13.12.2020)

Part One	NO STORM WARNING.	
Part Two	SEASONAL LOW LIES OVER SOUTH BAY, EXTENDING ITS TROUGH TO NORTH BAY.	
Part Three	Weather	TEMPORARY PARTLY CLOUDY OVER AREA C-90.
	Wind	NORTH/NORTH-EASTERLY, 08-12 KTS.
	Visibility	03-05 KMS, REDUCING TO 1000 M OR LESS IN MIST/FOG.
	Outlook	FOR SUBSEQUENT 12 HOURS: LITTLE CHANGE.
	MSL Pressure	AT = 13,0000 UTC. CHATTOGRAM =1013 HPA



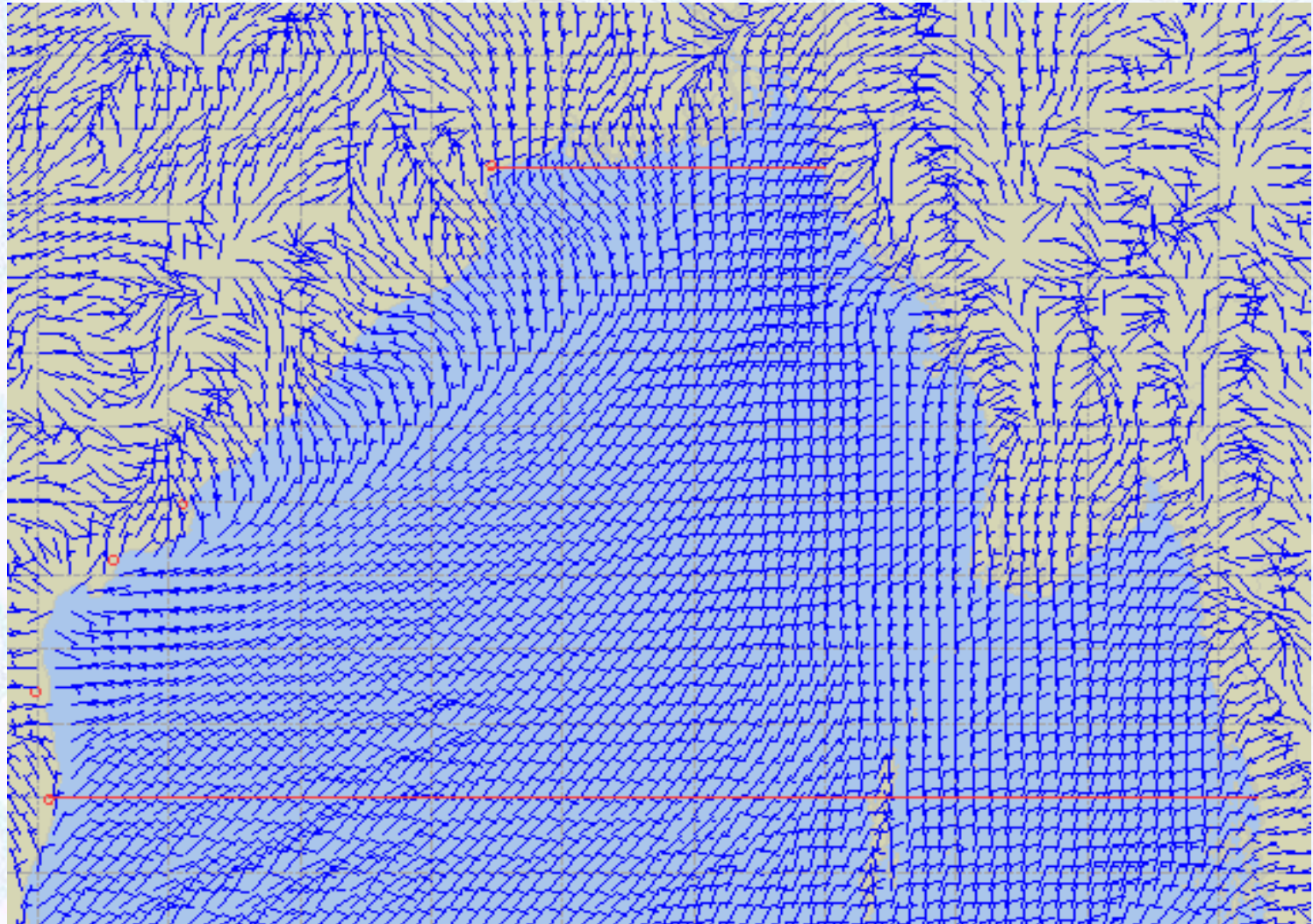
Inland River Port Warning **(VALID TILL 06 PM OF 13.12.2020)**

LIGHT TO MODERATE FOG MAY REDUCE SURFACE VISIBILITY TO 600 M OR LESS AT PLACES OVER THE RIVERBASINS OF THE COUNTRY DURING NEXT 02-03 HRS COMMENCING 09:00 AM OF 13.12.2020 WHEREIN RIVERCRAFTS SHALL PROCEED WITH CAUTION BUT NO SIGNAL IS TO BE HOISTED.

Ref: <http://www.bmd.gov.bd/?/home>



Surface Wind Forecast- 14 Dec - 2020



Legend:



**Calm
Winds**



5 Knots



10 Knots



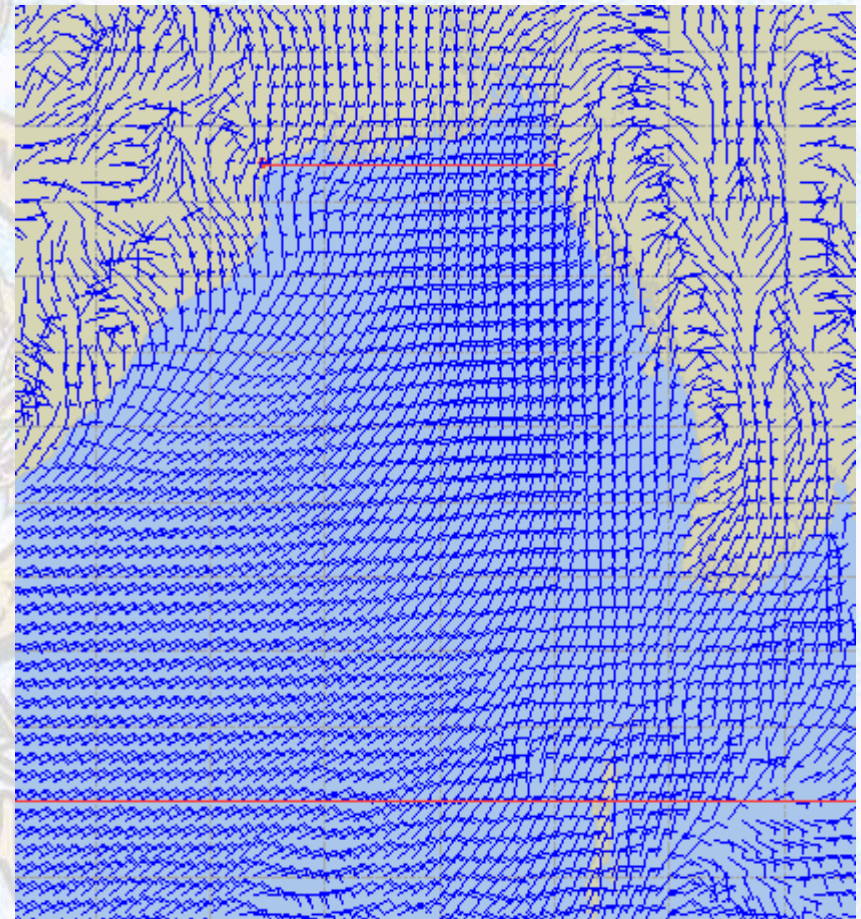
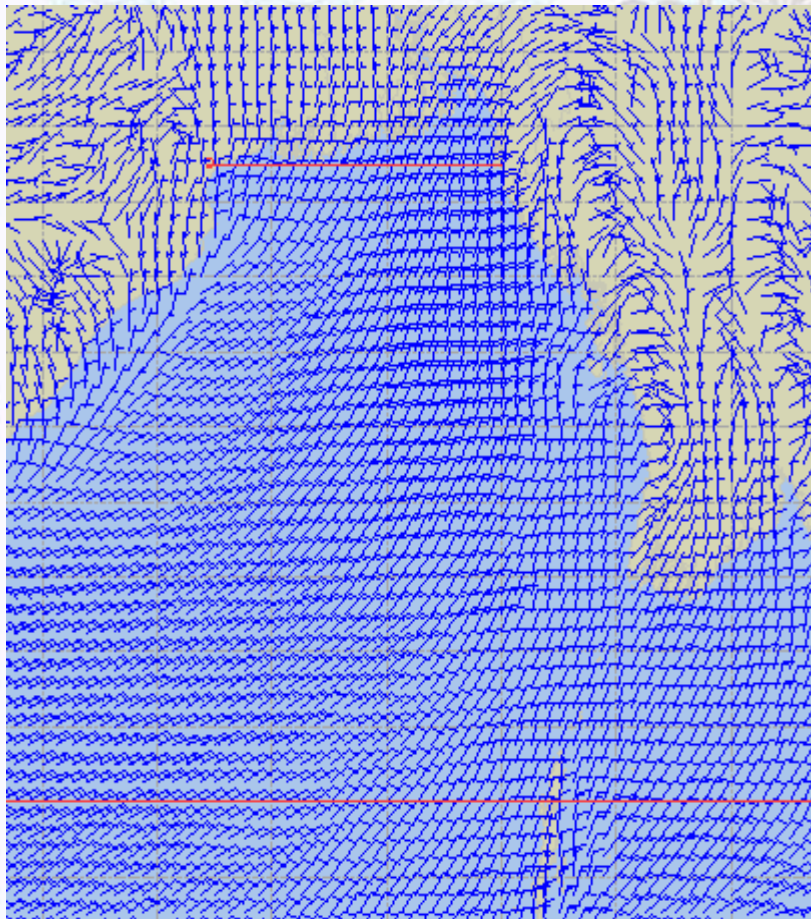
60 Knots



Surface Wind Forecast – 15 & 16 Dec - 2020

15 Dec 20 Tuesday

16 Dec 20 Wednesday



Legend:



Calm
Winds



5 Knots



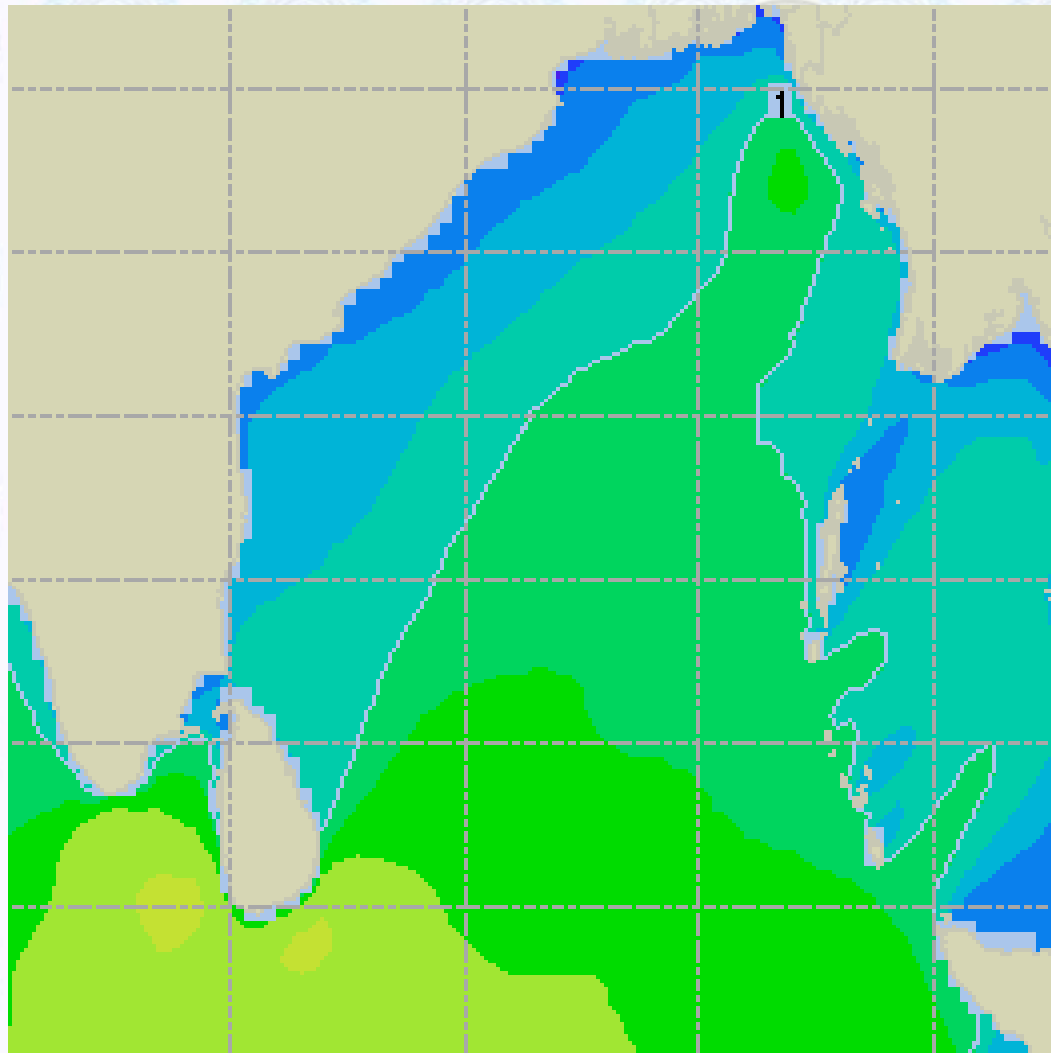
10 Knots



60 Knots



Sea State Forecast – 14 Dec - 2020



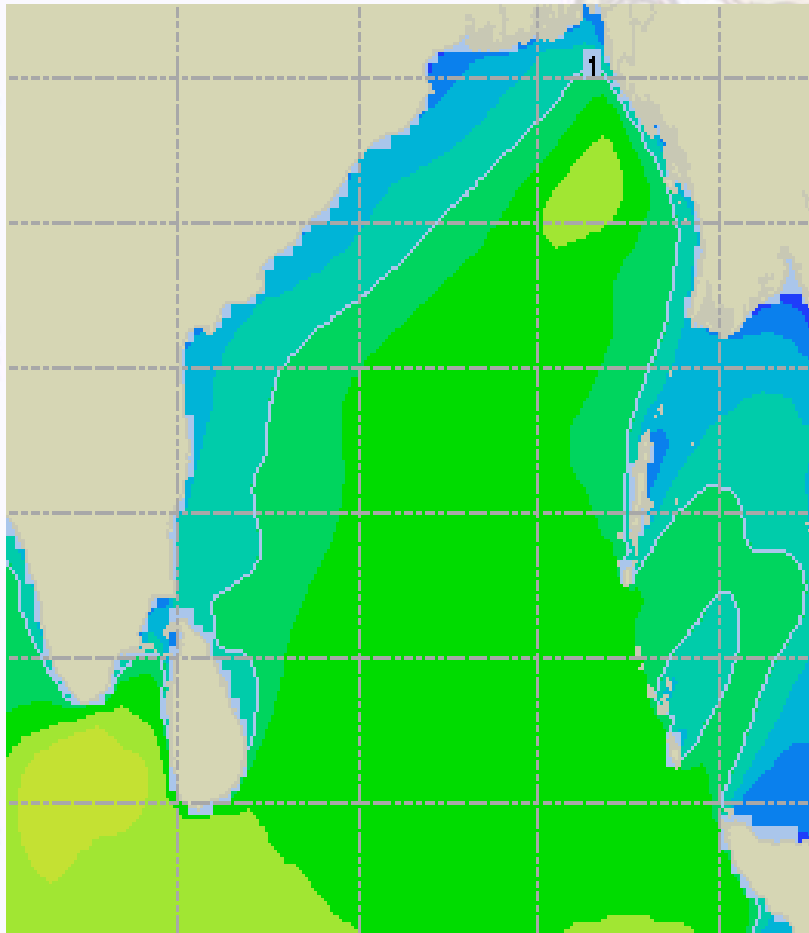
Sea State	Ht (m)
0	0-0.1
1	0-0.1
2	0.1-0.5
3	0.5-1.25
4	1.25-2.5
5	2.5-4.0
6	4-6
7	6-9
8	9-14
9	Over 14



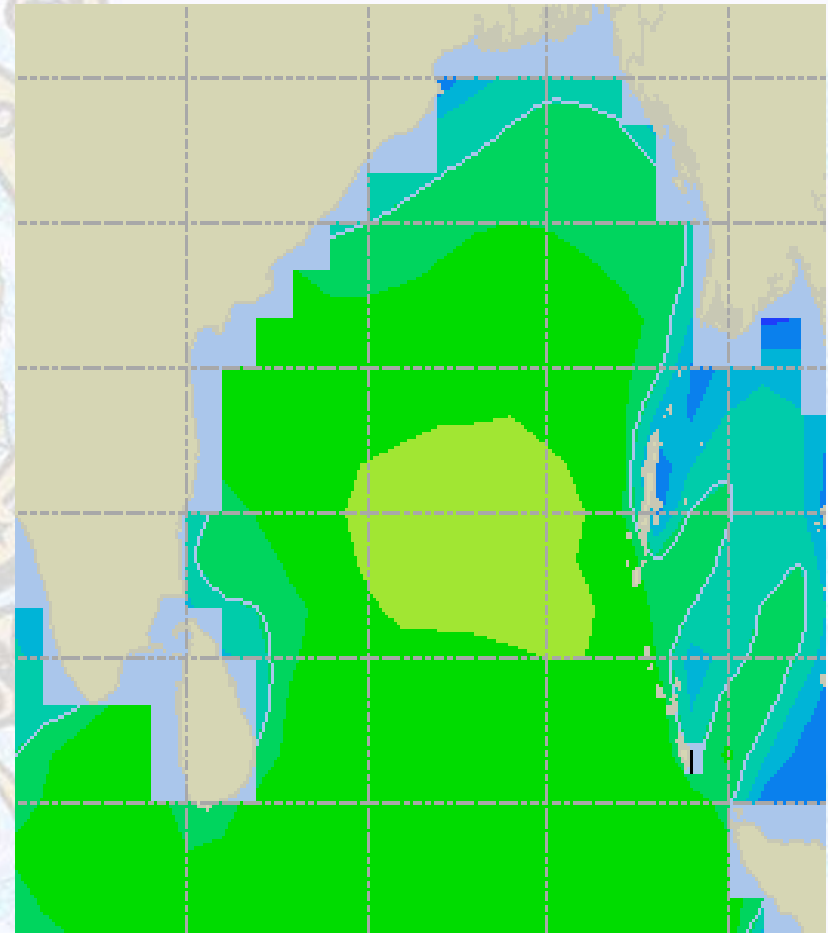


Sea State Forecast – 15 & 16 Dec - 2020

15 Dec 20 Tuesday



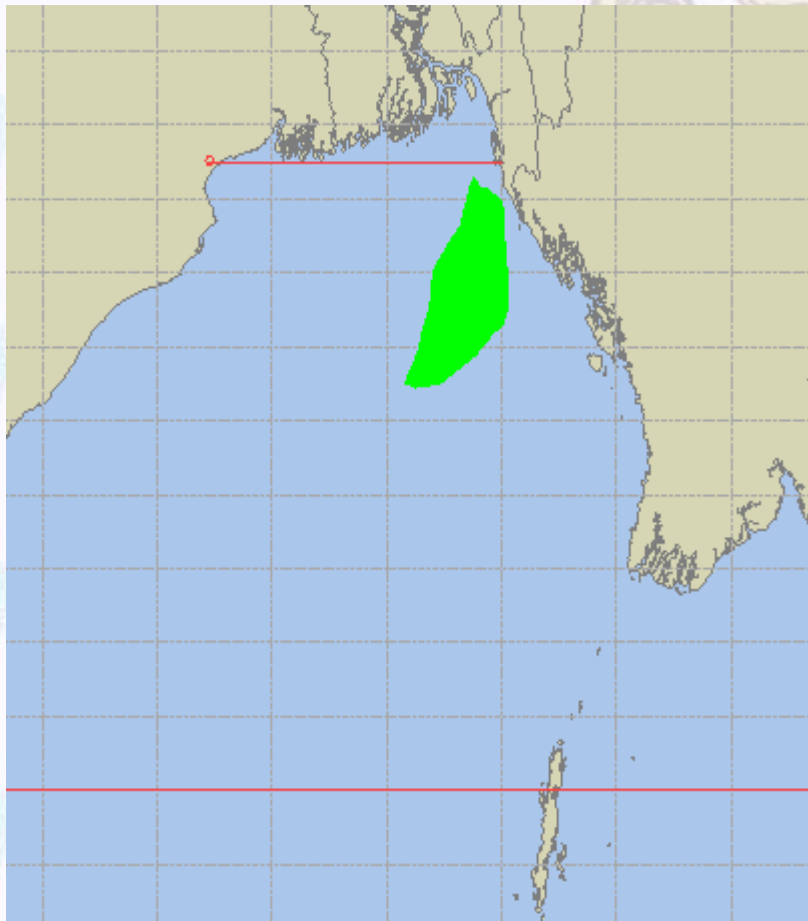
16 Dec 20 Wednesday



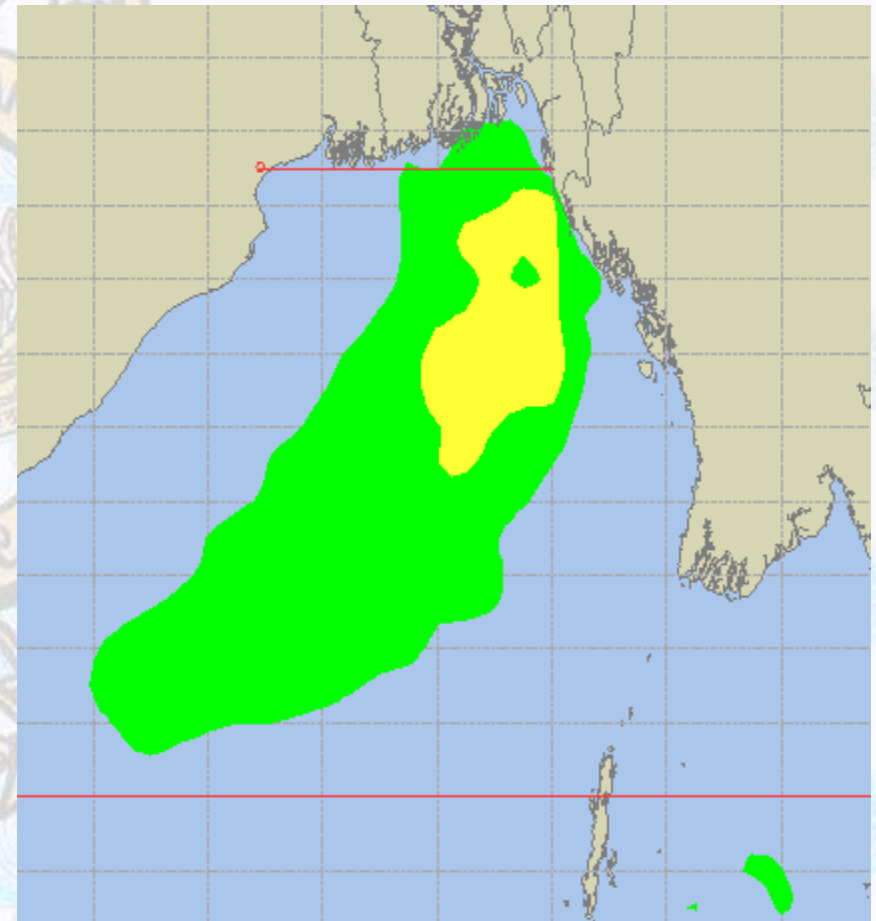


Peak Gusting Possibilities— 14 & 15 Dec 2020

14 Dec 20 Monday



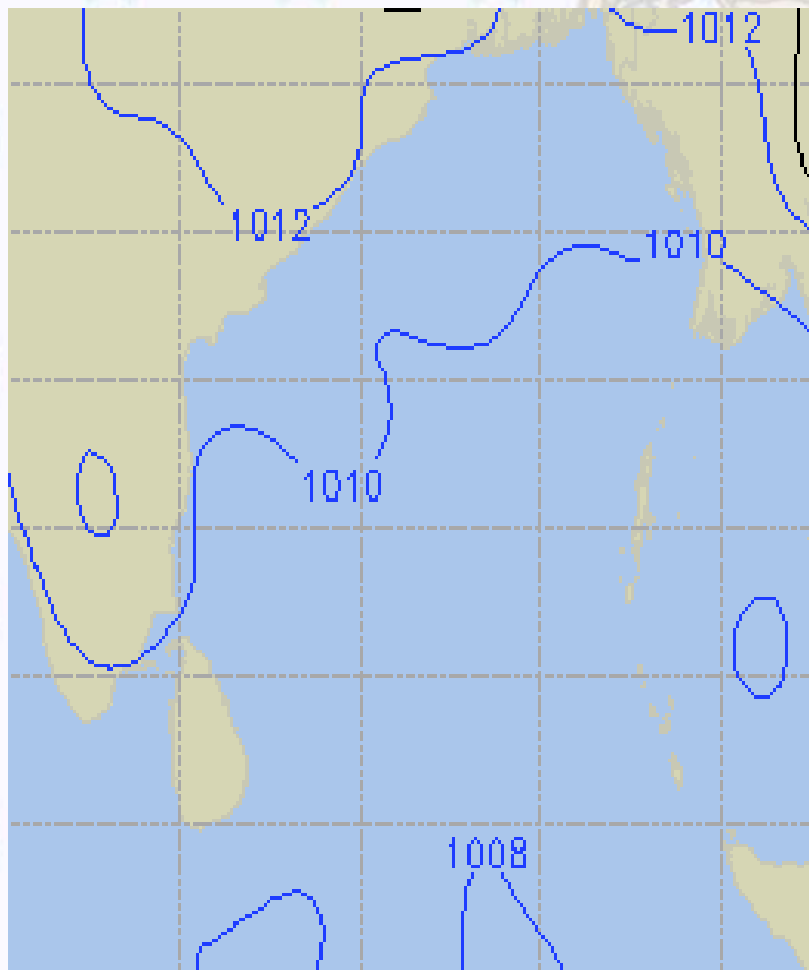
15 Dec 20 Tuesday



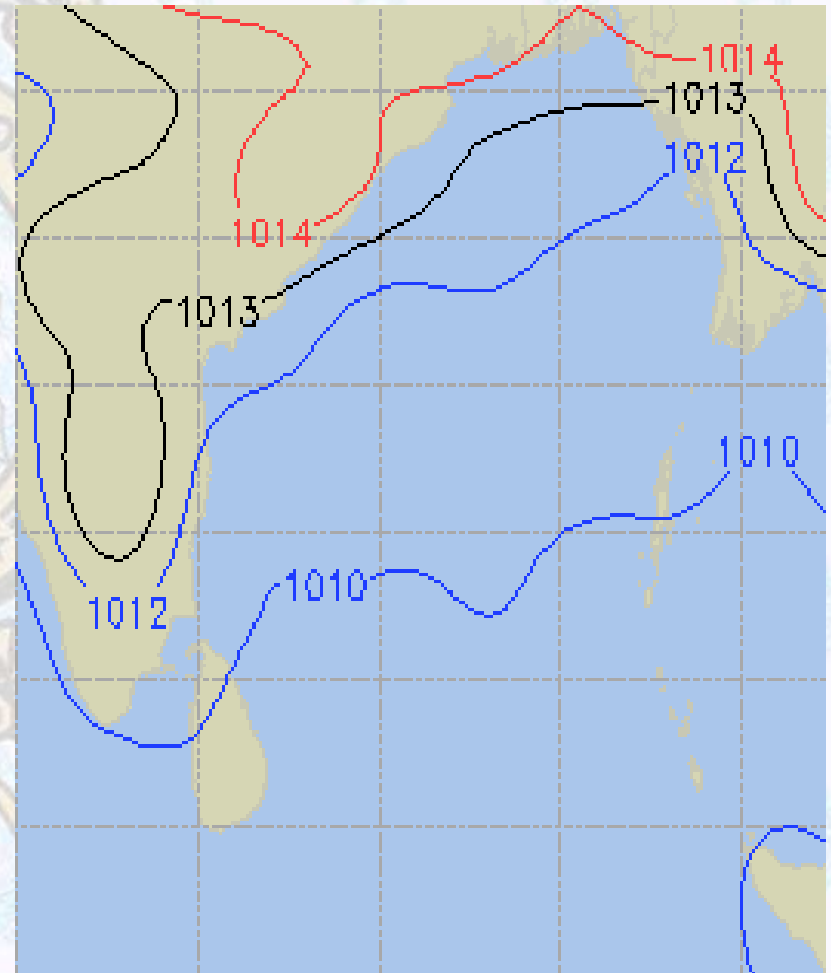


Surface Pressure forecast– 14 & 15 Dec 2020

14 Dec 20 Monday



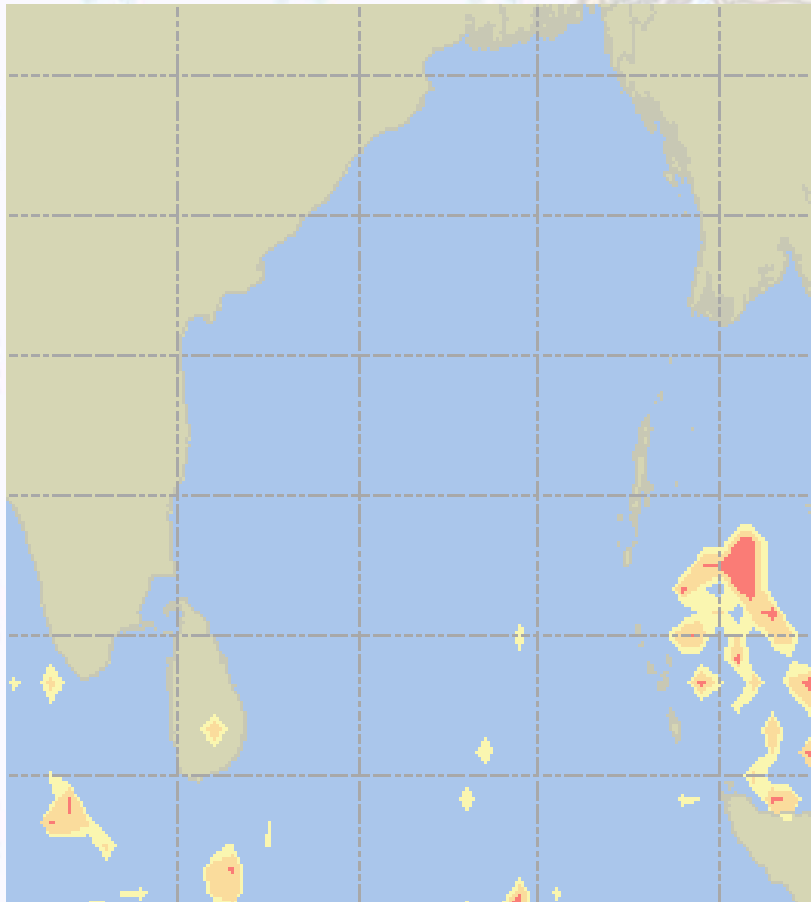
15 Dec 20 Tuesday



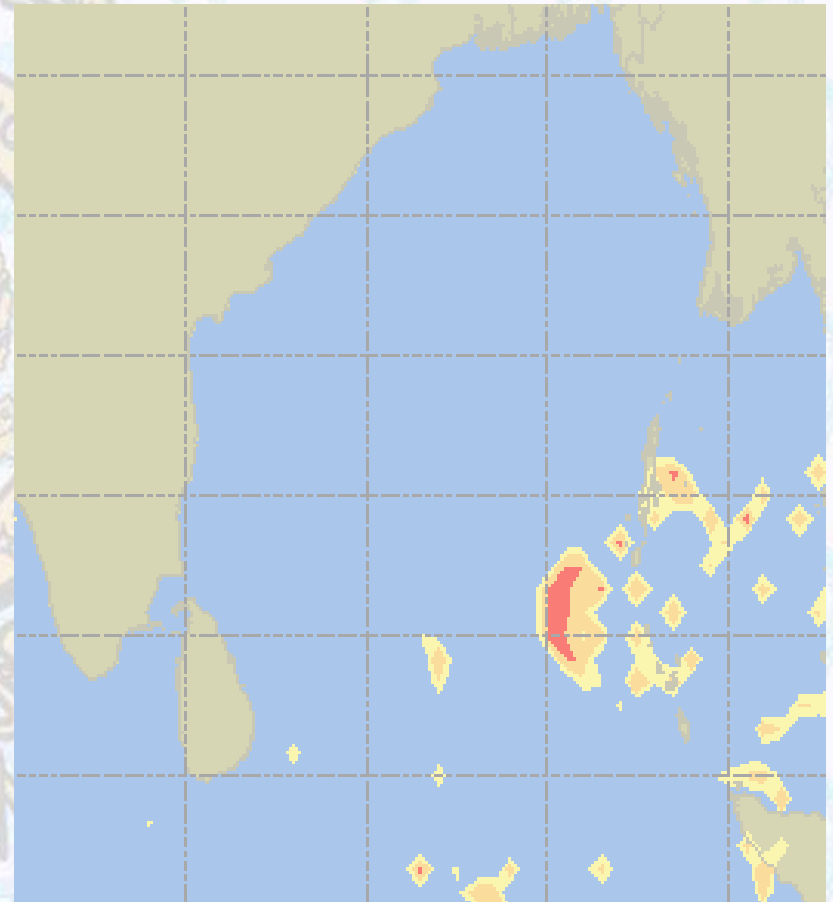


Visibility at Sea Forecast – 14 & 15 Dec 2020

14 Dec 20 Monday



15 Dec 20 Tuesday



Visibility Scale:

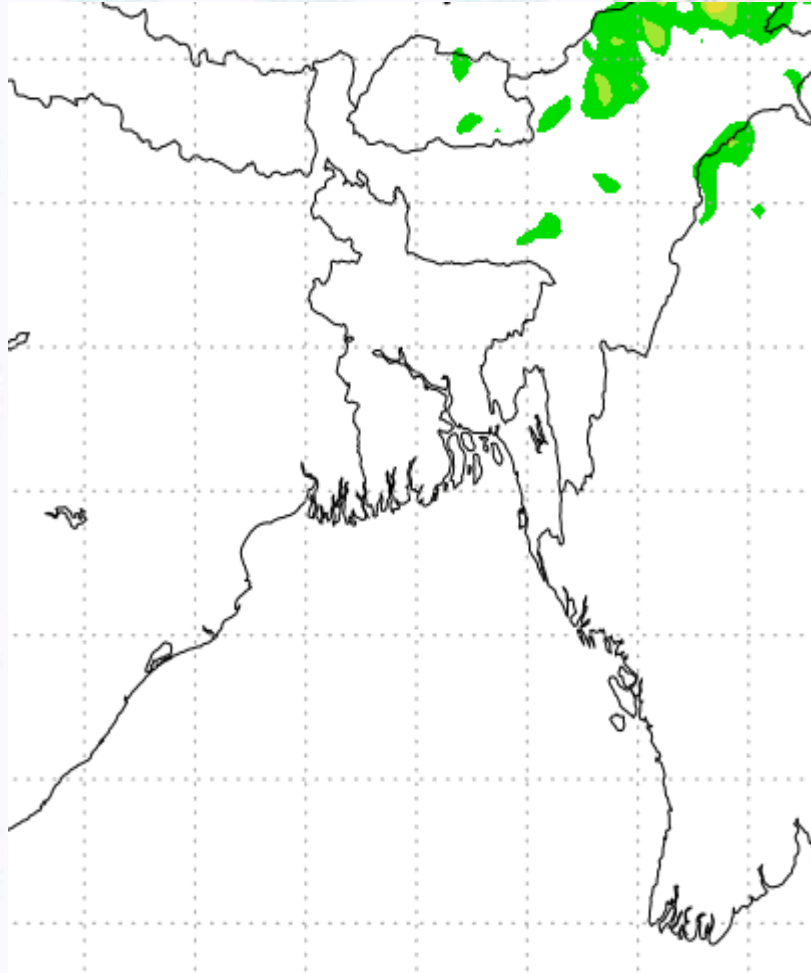


Ref (Slide 12-18): <http://www.weatheronline.co.uk/marine/weather?LEVEL>

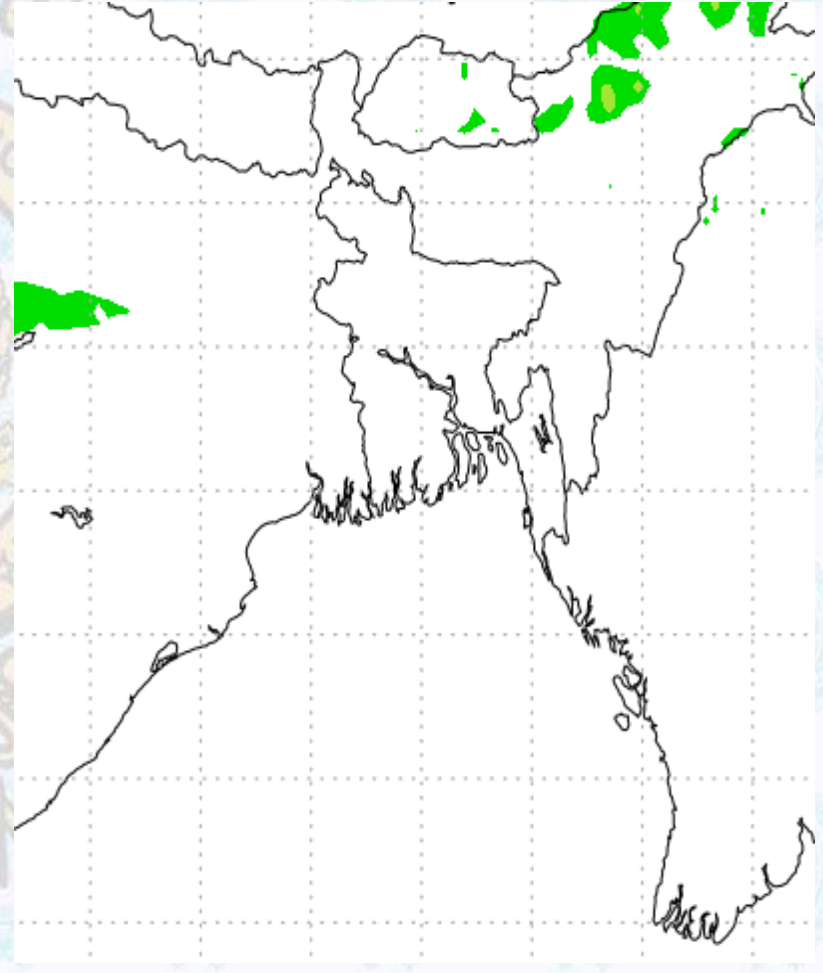


Precipitation

Rain(mm) 14 & 15 Dec2020



Rain(mm) 15 & 16 Dec2020



Precipitation Scale (mm):





Tidal Information

KHAL NO. 10

COX'S BAZAR

HIRAN POINT

14 Dec 2020	Time	Height		Time	Height		Time	Height
	0009	4.69		0430	0.50		0420	0.70
	0653	0.44		1002	3.18		1010	2.74
	1235	4.17		1642	0.41		1623	0.51
	1859	0.38		2227	3.69		2234	3.17
15 Dec 2020	Time	Height		Time	Height		Time	Height
	0051	4.73		0516	0.45		0507	0.64
	0738	0.40		1048	3.20		1057	2.75
	1318	4.19		1728	0.83		1708	0.52
	1941	0.39		2312	3.69		2318	3.16
16 Dec 2020	Time	Height		Time	Height		Time	Height
	0132	4.72		0600	0.44		0110	4.19
	0821	0.40		1132	3.17		0843	0.52
	1400	4.19		1811	0.41		1350	3.80
	2022	0.45		2356	3.62		2037	0.65