



WEATHER FORECAST FOR BN

11 - 14 DEC 2020





WEATHER FORECAST – DHAKA

11.12.2020

Hourly	2 PM	4 PM	8 PM	11 PM
Temp. / Dew Point	23 / 18	24 / 17	22 / 18	21 / 17
Wind	4 km/h NNW	5 km/h NW	3 km/h NW	3 km/h NW
Humidity	72%	67%	76%	79%
Chance of Precip	1%	1%	2%	5%
Cloud Cover	88%	59%	9%	2%
Conditions	Partly Cloudy	Partly Cloudy	Clear	Clear
Sunrise Sunset	06: 31 AM 17: 12 PM			

Conditions

Pressure : 1013 hpa

Visibility : 2.25 km

Ref: <https://www.wunderground.com/weather/bd/dhaka>



WEATHER FORECAST – CHATTOGRAM

11.12.2020

Hourly	2 PM	4 PM	8 PM	11 PM
Temp. / Dew Point	25 / 18	25 / 19	22 / 19	22 / 19
Wind	8 km/h NW	8 km/h WNW	6 km/h NW	7 km/h N
Humidity	65%	67%	86%	90%
Chance of Precip.	1%	1%	3%	6%
Cloud Cover	1%	1%	1%	1%
Conditions	Sunny	Sunny	Clear	Clear
Sunrise	06: 22 AM			
Sunset	17: 09 PM			

Conditions

Pressure : 1013 hpa

Visibility : 3:54 Km

Ref: <https://www.wunderground.com/weather/bd/chittagong>



WEATHER FORECAST – KHULNA

11.12.2020

Hourly	2 PM	4 PM	8 PM	11 PM
Temp. / Dew Point	25 / 17	25 / 17	21 / 17	19 / 17
Wind	6 km/h NW	5 km/h NNW	2 km/h NNW	3 km/h N
Humidity	60%	59%	79%	88%
Chance of Precip.	1%	1%	2%	6%
Cloud Cover	13%	8%	4%	1%
Conditions	Sunny	Sunny	Clear	Clear
Sunrise Sunset	06: 32 AM 17: 17 PM			

Conditions

Pressure : 1013 hpa

Visibility : 14.48 Km

Ref: <https://www.wunderground.com/weather/bd/khulna>



GENERAL WEATHER FORECAST – DHAKA

Description	12 Dec 2020	13 Dec 2020	14 Dec 2020
Temperature (C)	26 °C / 18 °C	27 °C / 19 °C	27 °C / 19 °C
Summary	AM Fog / PM Sunny	AM Fog / PM Sunny	AM Fog / PM Sunny
Sun Rise/Set	6h31m54s/17h12m42s	6h32m42s/17h13m12s	6h33m24s/17h13m36s
Day Length	10h40m48s	10h40m30s	10h40m12s
Moon Rise/ Set	3:40AM 3:15PM	4:46AM 4:03PM	5:54AM 4:56PM
Moon Phase/ illu	Waning Crescent, 5%	Waning Crescent, 1%	New Moon, 0%
NauticalTwilight	05:37, 18:05	05:39, 18:06	05:39, 18:06
Civil Twilight	06:06, 17:37	06:07, 17:38	06:07, 17:37
Humidity	D : 74% N : 82%	D : 72% N : 81%	D : 70% N : 79%
Barometer (mb)	1013	1012	10132
Visibility	Moderate	Moderate	Moderate
Precip Chance	5%	5%	5%
Wind (mph)	7 Km/h WNW	8 Km/h WNW	9 Km/h NNW

Ref: <https://weather.com/weather/5day//BGXX0003:1:BG>



GENERAL WEATHER FORECAST– CHATTOGRAM

Description	12 Dec 2020	13 Dec 2020	14 Dec 2020
Temperature (C)	26 °C/ 17 °C	27 °C/ 18 °C	28 °C/ 18 °C
Summary	AM Fog / PM Sunny	AM Fog / PM Sunny	AM Fog / PM Sunny
Sun Rise/Set	6h23m00s/17h10m06s	6h23m48s/17h10m30s	6h24m30s/17h11m00s
Day Length	10h47m06s	10h46m42s	10h46m30s
Moon Rise/ Set	3:32AM 3:11PM	4:38AM 3:59PM	5:45AM 4:53PM
Moon Phase/ illu	Waning Crescent, 5%	Waning Crescent, 1%	New Moon, 0%
NauticalTwilight	05:30 18:02	05:30 18:02	05:31 18:01
Civil Twilight	05:58, 17:34	05:58, 17:35	05:59, 17:34
Humidity	D : 77% N : 92%	D : 76% N : 91%	D : 68% N : 84%
Barometer (mb)	1013	1012	1012
Visibility	Moderate	Moderate	Moderate
Precip Chance	10%	5%	5%
Wind (mph)	7 Km/h NNW	9 Km/h NNW	12 Km/h N

Ref: <https://weather.com/weather/5day//BGXX0002:1:BG>



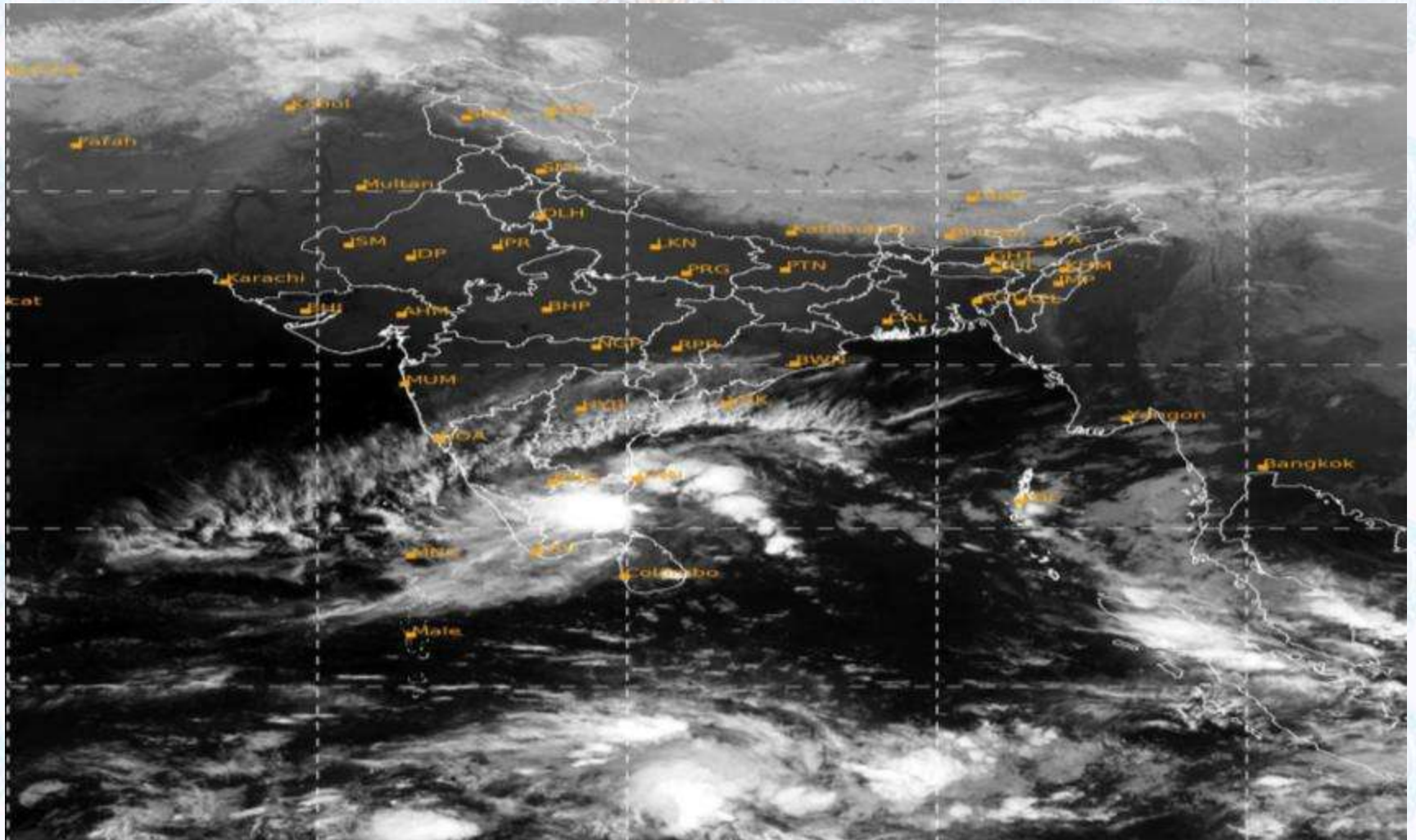
GENERAL WEATHER FORECAST – KHULNA

Description	12 Dec 2020	13 Dec 2020	14 Dec 2020
Temperature(C)	27°C/ 18°C	27°C/ 19°C	28°C/ 18°C
Summary	AM Fog / PM Sunny	AM Fog / PM Sunny	AM Fog / PM Sunny
Sun Rise/Set	6h33m12s/17h18m12s	6h34m00s/17h18m36s	6h34m42s/17h19m00s
Day Length	10h45m00s	10h44m36s	10h44m18s
Moon Rise/Set	3:42AM 3:20PM	4:48AM 4:08PM	5:56AM 5:02PM
Moon Phase/illu	Waning Crescent, 5%	Waning Crescent, 1%	New Moon, 0%
NauticalTwilight	05:40, 18:10	05:40, 18:11	05:41, 18:11
Civil Twilight	06:08, 17:42	06:08, 17:43	06:09, 17:43
Humidity	D : 72% N : 81%	D : 69% N : 81%	D : 68% N : 79%
Barometer (mb)	1014	1012	1012
Visibility	Moderate	Moderate	Moderate
Precip Chance	5%	5%	5%
Wind (mph)	10 km/h NW	10 km/h NW	10 km/h NNW

Ref: <https://weather.com/weather/5day//BGXX0005:1:BG>



SATELLITE VIEW OF BAY OF BENGAL

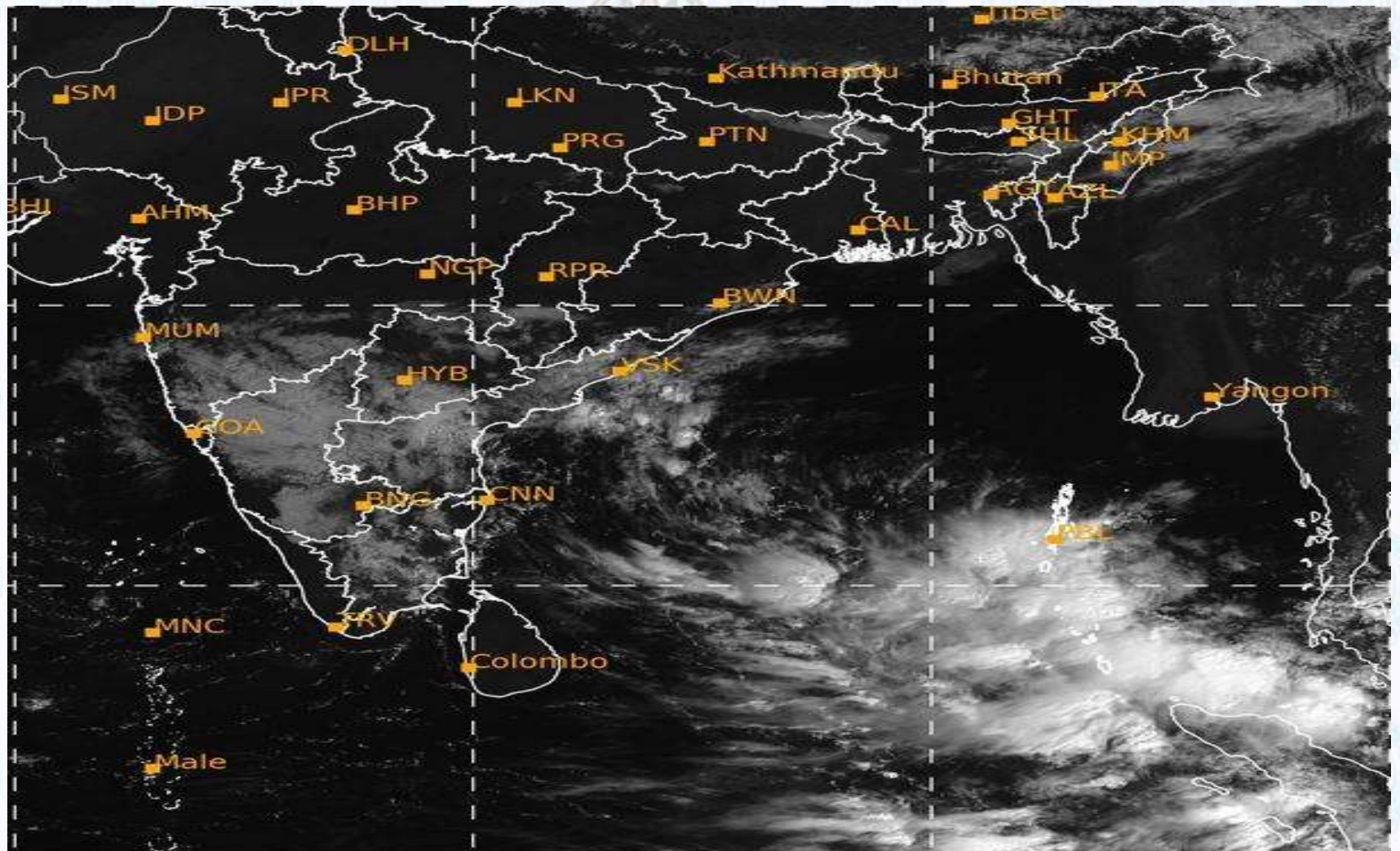


11/12/2020, 11:00 UTC MATSAT-IR

Ref: <http://satellite.imd.gov.in/insat.htm>



SATELLITE VIEW OF BAY OF BENGAL



11/12/2020, 11:00 MATSAT-VIS

Ref: <http://satellite.imd.gov.in/insat.htm>



Fleet Forecast Sea Area C-90 (Valid for 12 Hrs Commencing 1000 UTC of 11.12.2020)

Part One	NO STORM WARNING.	
Part Two	TROUGH OF LOW LIES OVER NORTH BAY.	
Part Three	Weather	TEMPORARY PARTLY CLOUDY OVER AREA C-90.
	Wind	NORTH/NORTH-EASTERLY, 08-12 KTS.
	Visibility	03-05 KMS, REDUCING TO 1000 M OR LESS IN MIST/FOG.
	Outlook	FOR SUBSEQUENT 12 HOURS: LITTLE CHANGE.
	MSL Pressure	AT = 11,0000 UTC. CHATTOGRAM =1013 HPA



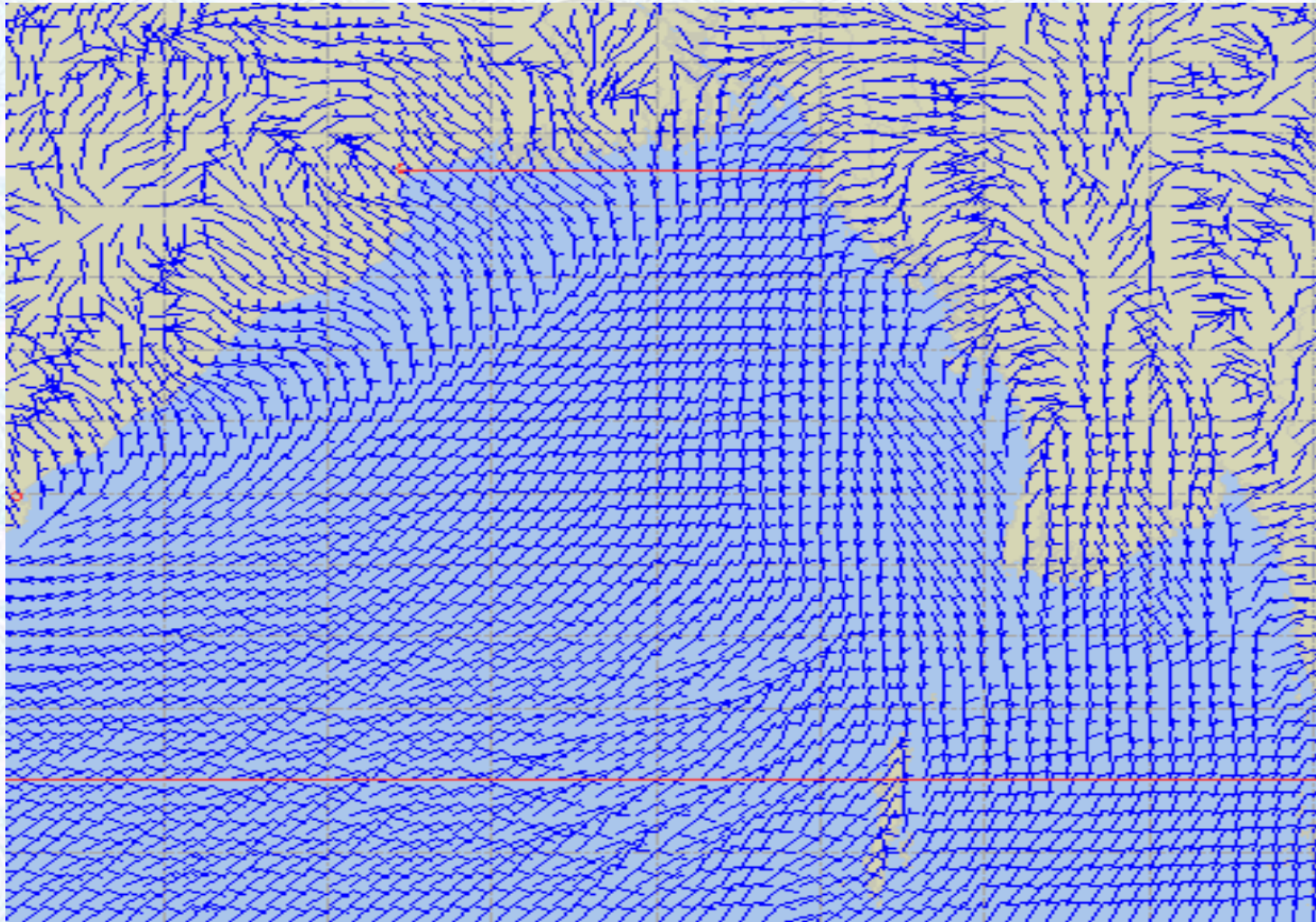
Inland River Port Warning **(VALID TILL 06 PM OF 11.12.2020)**

MODERATE TO THICK FOG MAY REDUCE THE SURFACE VISIBILITY TO 400M OR LESS AT PLACES OVER THE RIVERBASINS OF THE COUNTRY DURING NEXT 02-03 HOURS COMMENCING 10 AM OF 11.12.2020 WHEREIN RIVERCRAFTS SHALL PROCEED WITH CAUTION BUT NO SIGNAL IS TO BE HOISTED.

Ref: <http://www.bmd.gov.bd/?/home>



Surface Wind Forecast- 12 Dec - 2020



Legend:



**Calm
Winds**



5 Knots



10 Knots



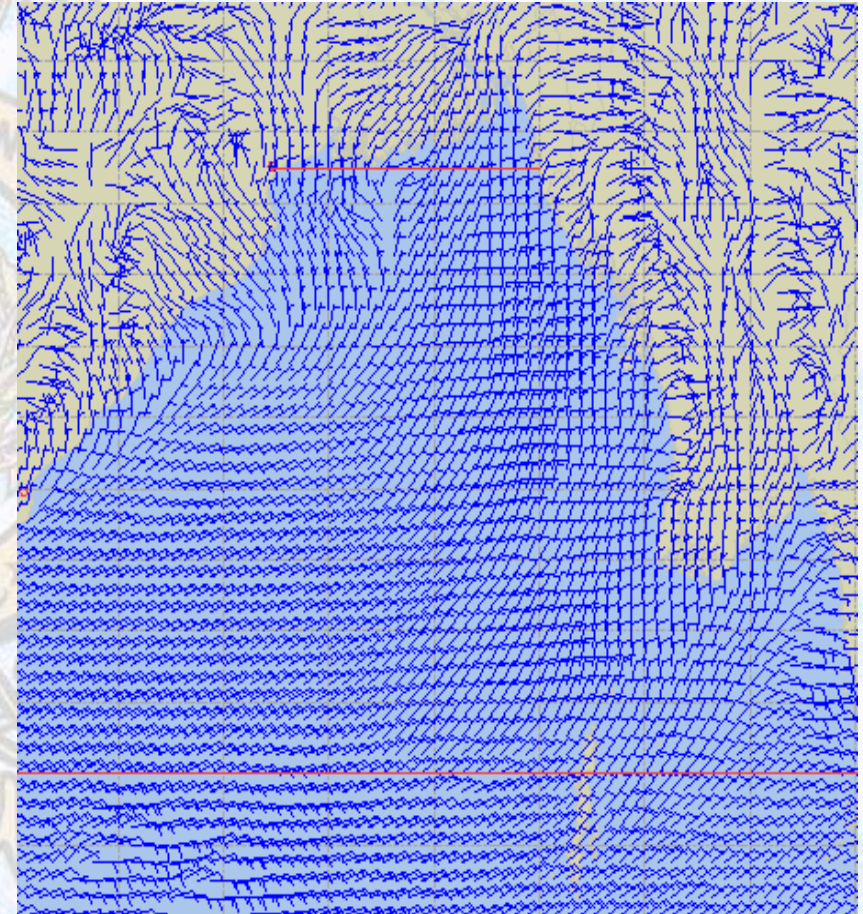
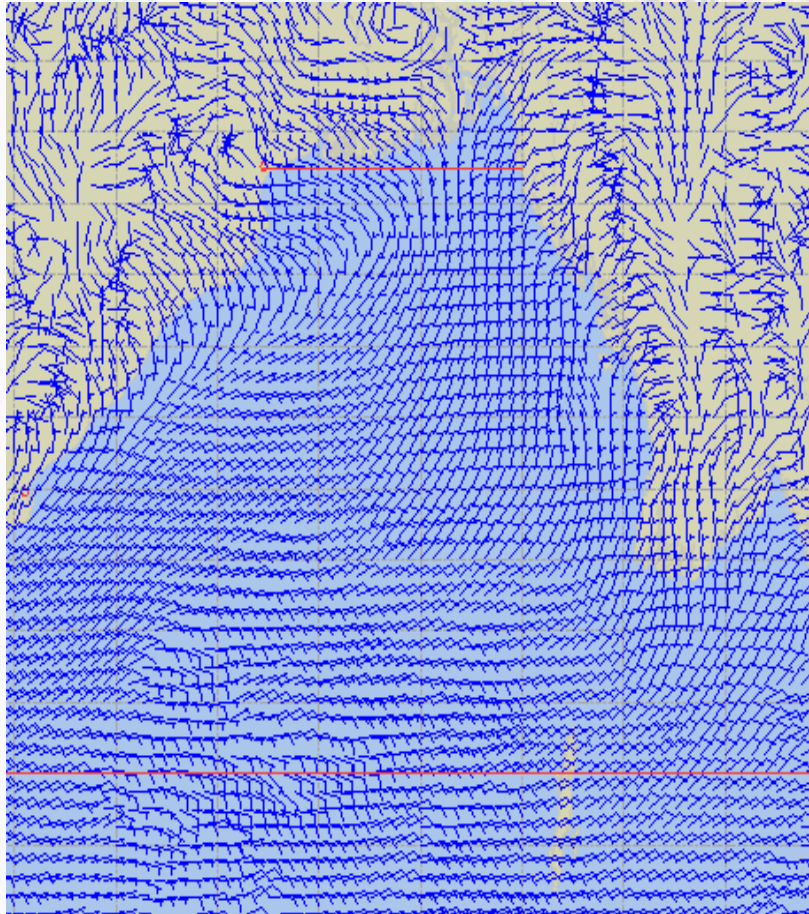
60 Knots



Surface Wind Forecast – 13 & 14 Dec - 2020

13 Dec 20 Sunday

14 Dec 20 Monday



Legend:



Calm
Winds



5 Knots



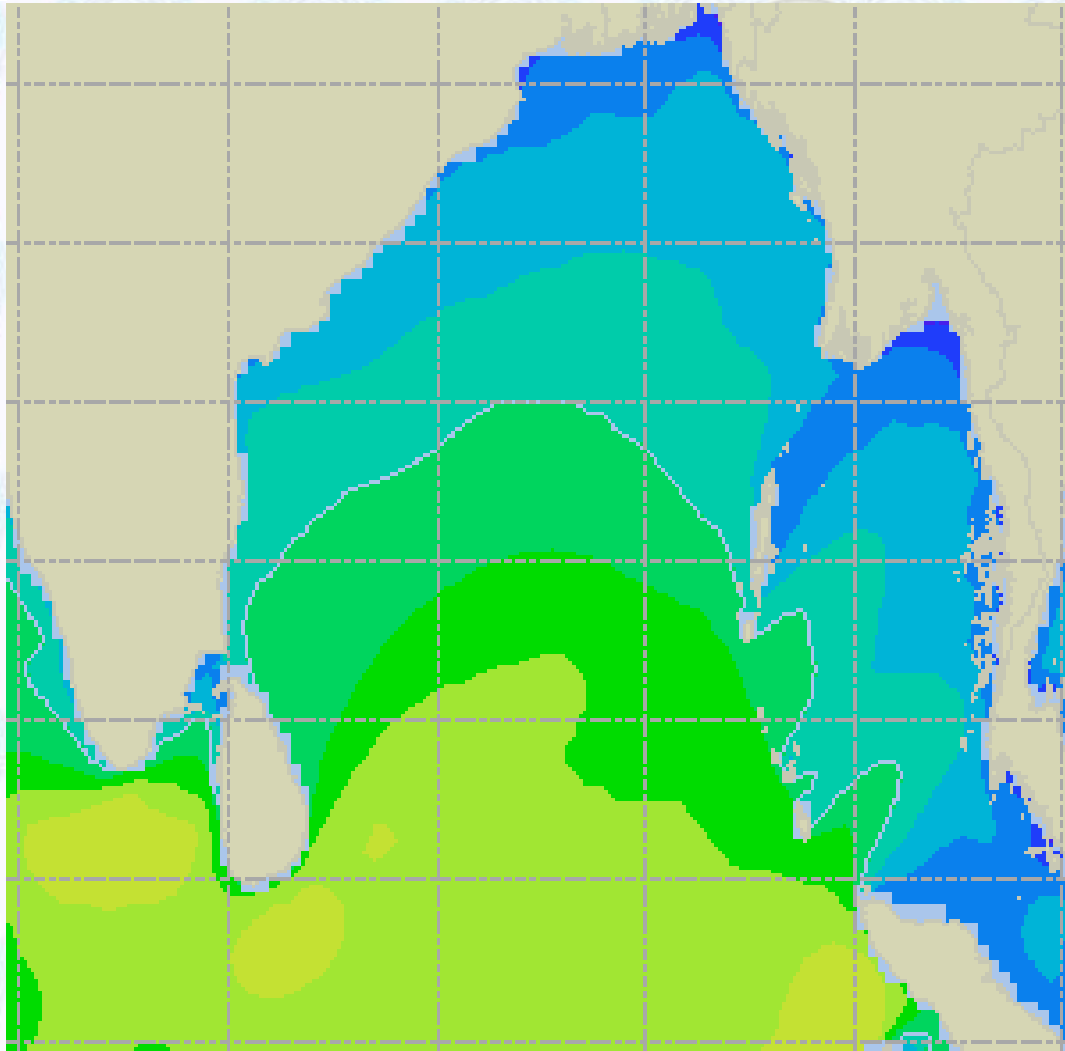
10 Knots



60 Knots



Sea State Forecast – 12 Dec - 2020



Sea State	Ht (m)
0	0-0.1
1	0-0.1
2	0.1-0.5
3	0.5-1.25
4	1.25-2.5
5	2.5-4.0
6	4-6
7	6-9
8	9-14
9	Over 14

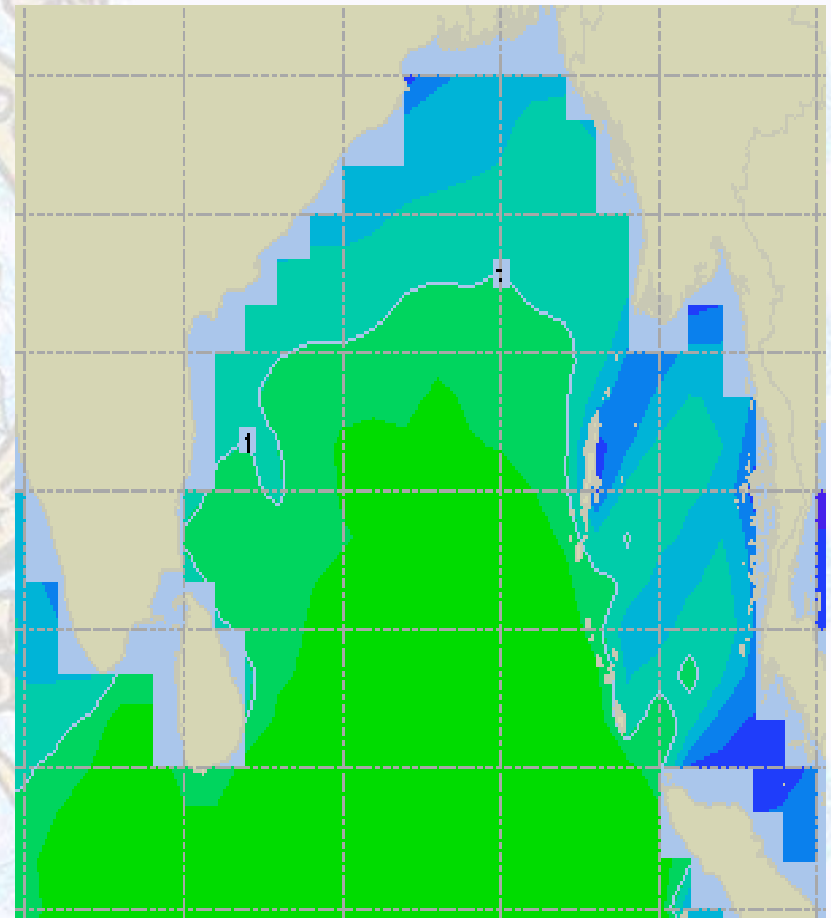
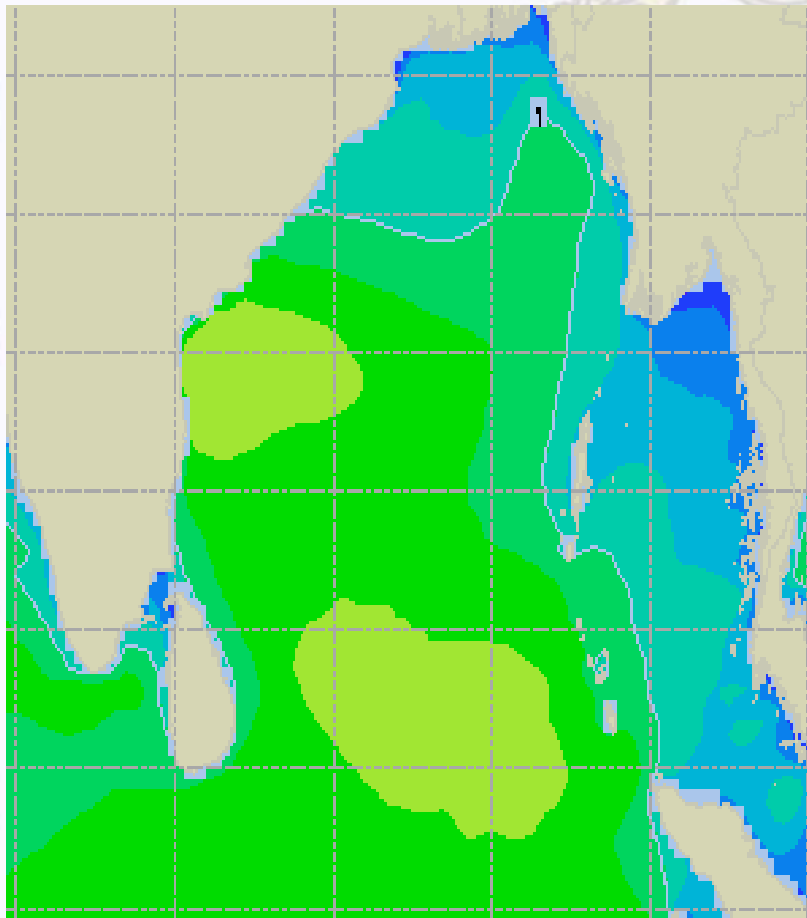




Sea State Forecast – 13 & 14 Dec - 2020

13 Dec 20 Sunday

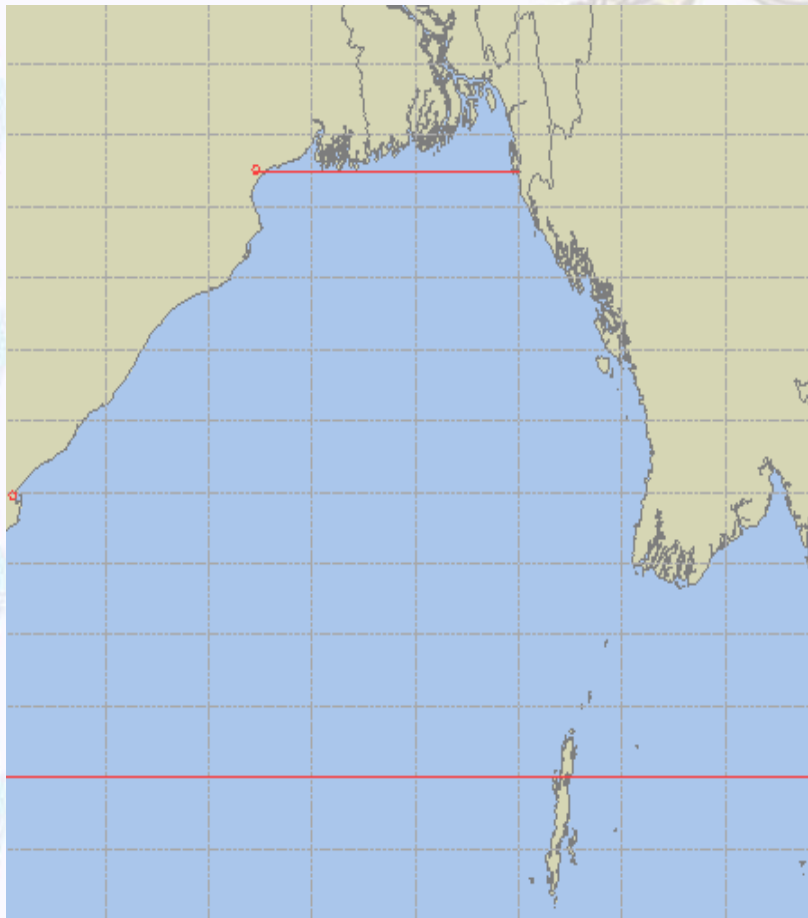
14 Dec 20 Monday



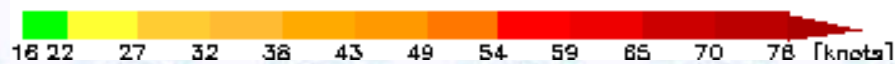
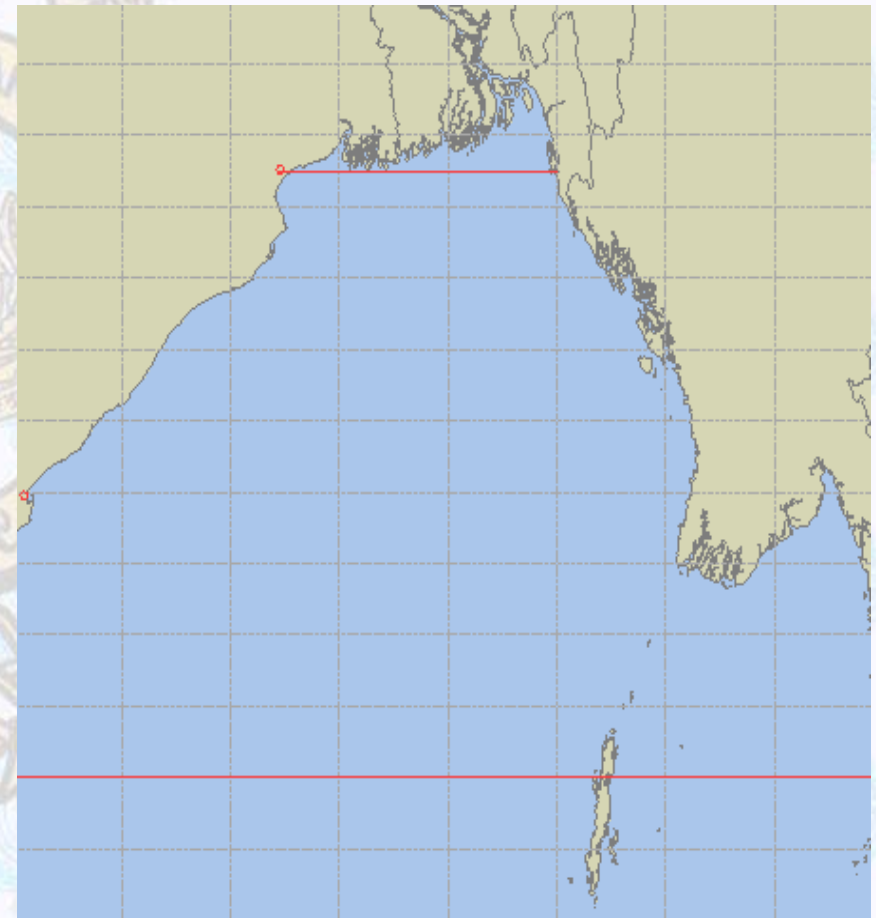


Peak Gusting Possibilities— 12 & 13 Dec 2020

12 Dec 20 Saturday



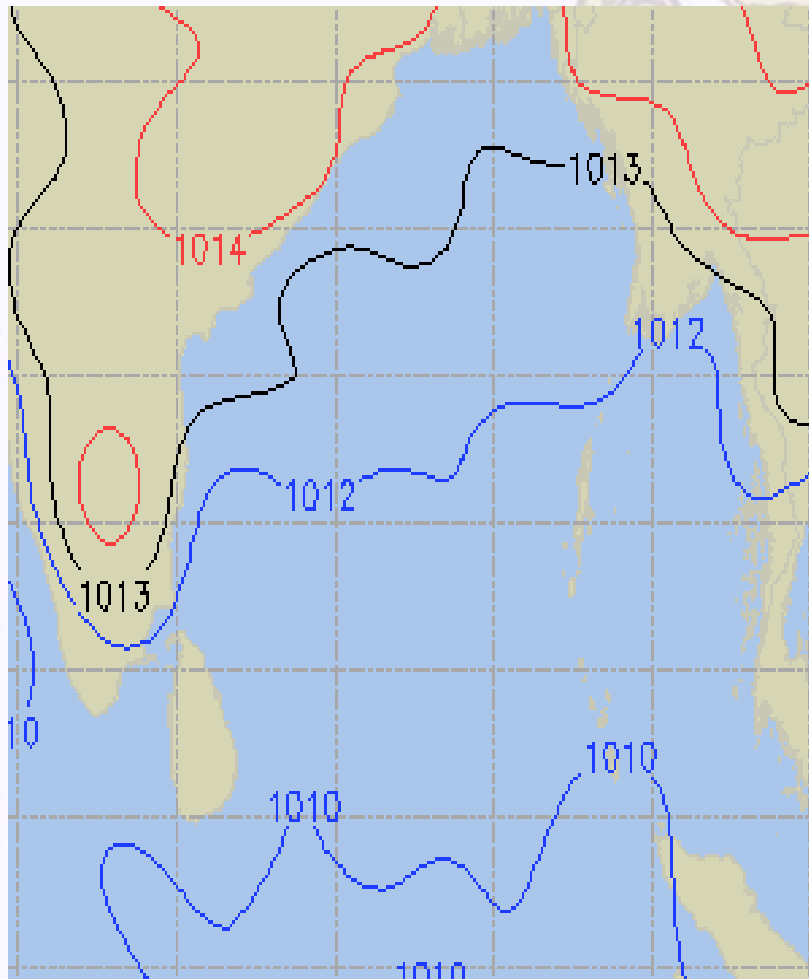
13 Dec 20 Sunday



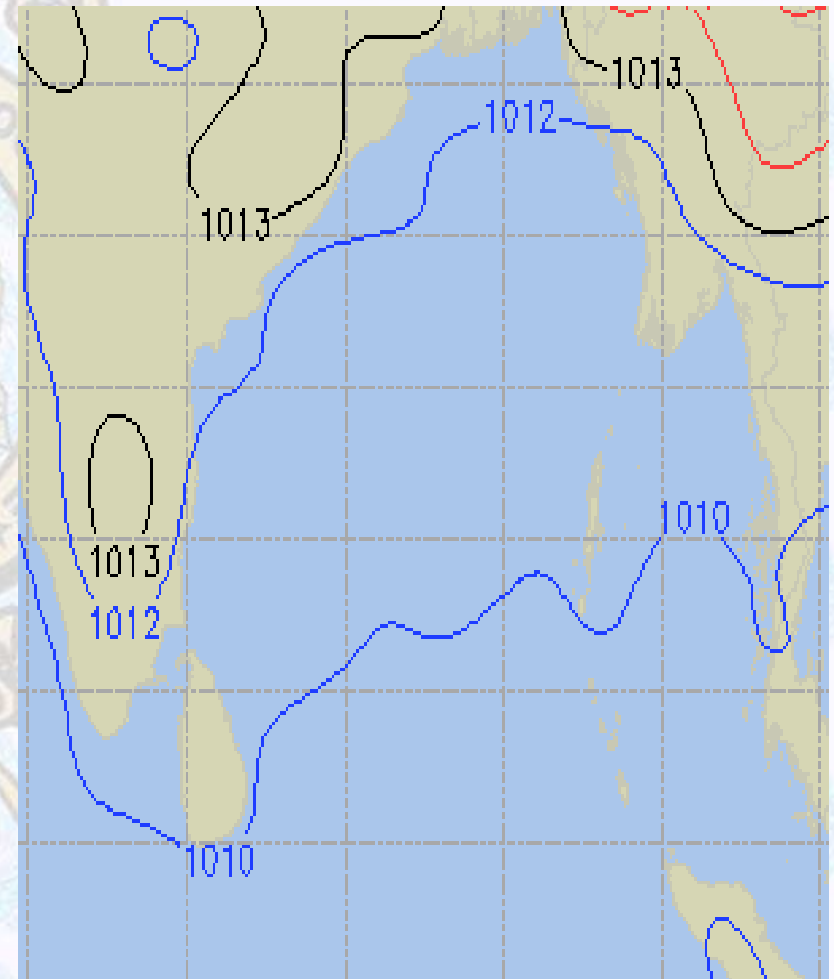


Surface Pressure forecast– 12 & 13 Dec 2020

12 Dec 20 Saturday



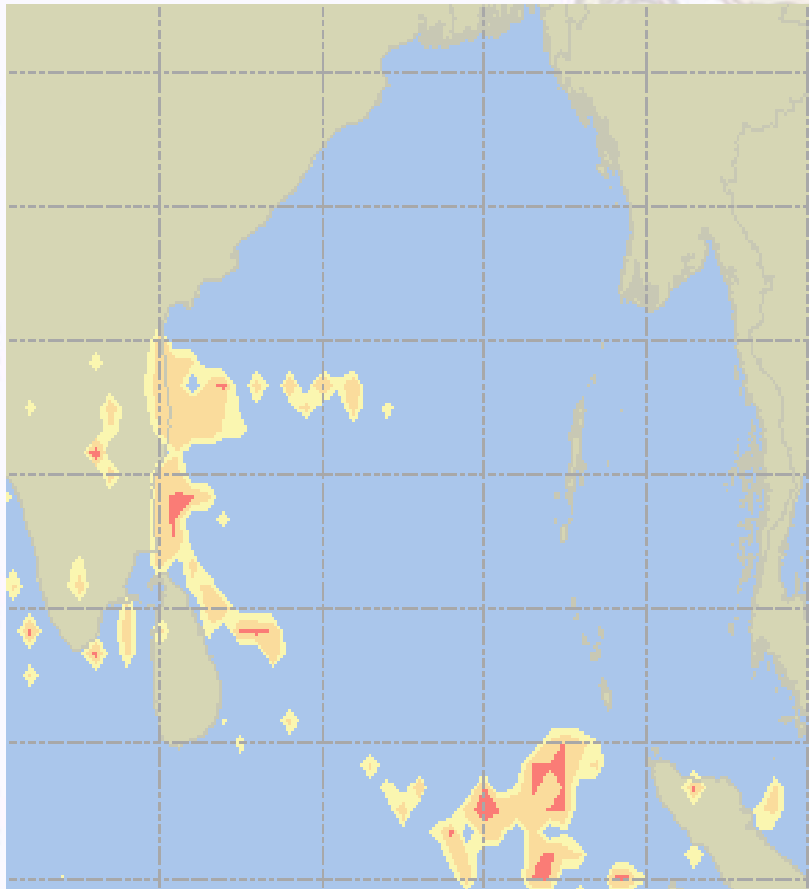
13 Dec 20 Sunday



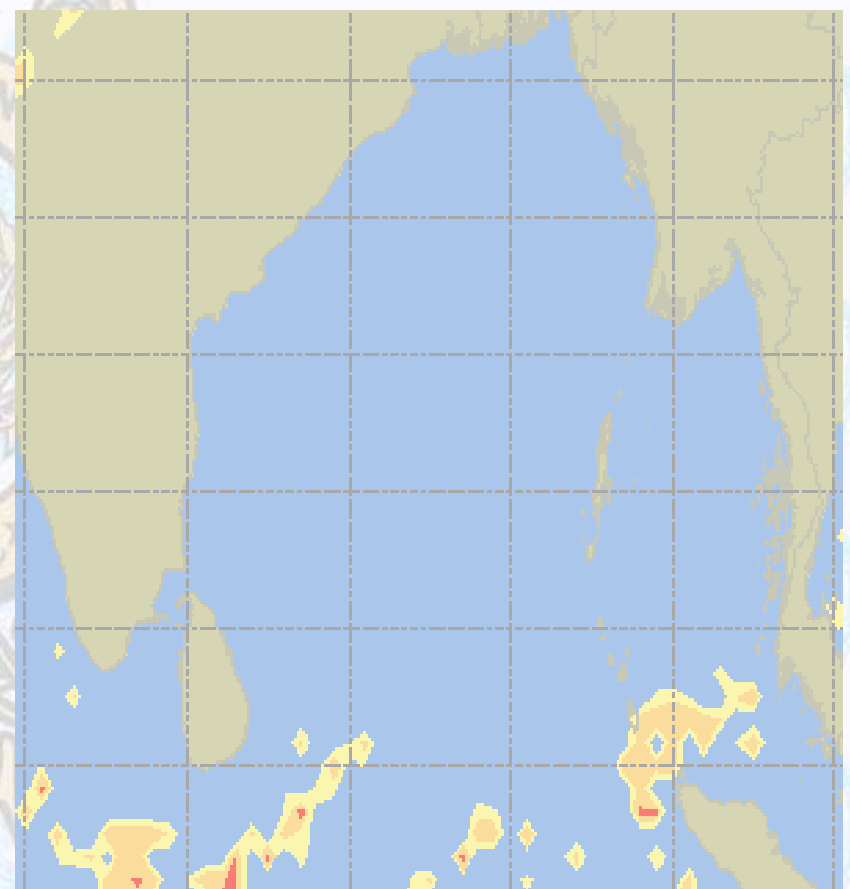


Visibility at Sea Forecast – 12 & 13 Dec 2020

12 Dec 20 Saturday



13 Dec 20 Sunday



Visibility Scale:



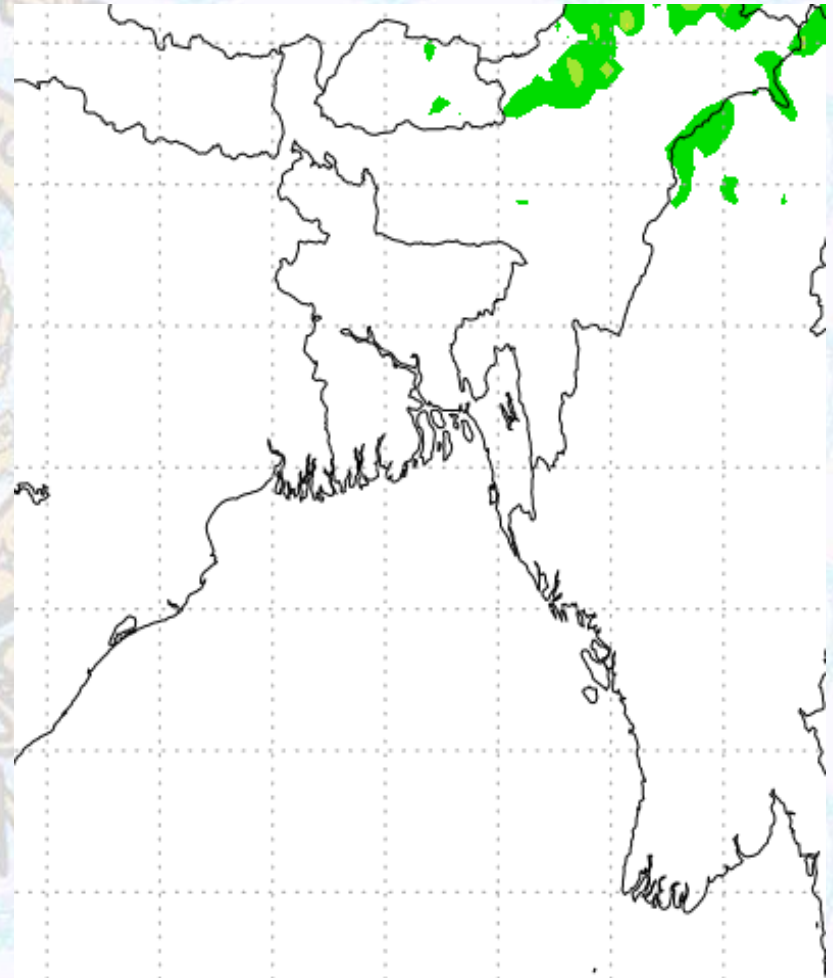
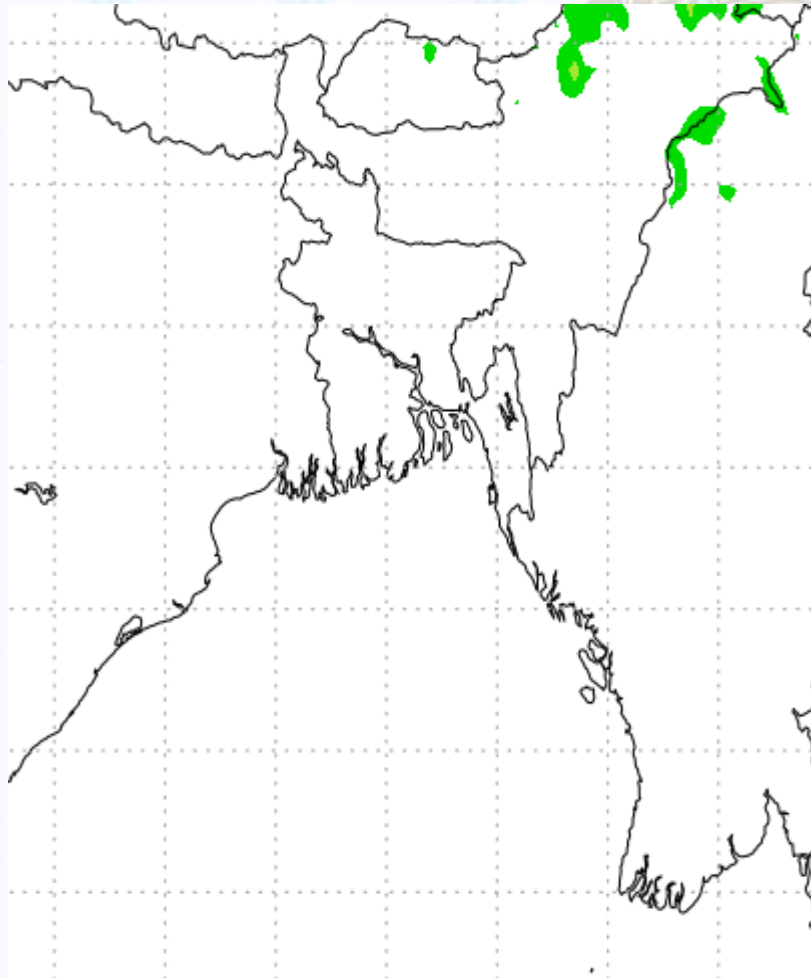
Ref (Slide 12-18): <http://www.weatheronline.co.uk/marine/weather?LEVEL>



Precipitation

Rain(mm) 12 & 13 Dec2020

Rain(mm) 13 & 14 Dec2020



Precipitation Scale (mm):





Tidal Information

KHAL NO. 10

COX'S BAZAR

HIRAN POINT

	Time	Height		Time	Height		Time	Height
		0511		0.71			0243	0.75
12 Dec 2020	1055	4.01		0822	2.97		0824	2.63
	1724	0.48		1459	0.60		1443	0.64
	2323	4.58		2053	3.43		2101	3.04
	Time	Height		Time	Height		Time	Height
		0605		0.53			0339	0.60
13 Dec 2020	1148	4.11		0914	3.09		0920	2.70
	1813	0.41		1553	0.49		1535	0.55
	-	-		2141	3.60		2149	3.13
	Time	Height		Time	Height		Time	Height
		0009		4.69			0430	0.50
14 Dec 2020	0653	0.44		1002	3.18		1010	2.74
	1235	4.17		1642	0.41		1623	0.51
	1859	0.38		2227	3.69		2234	3.17