



WEATHER FORECAST FOR BN

08 - 11 DEC 2020





WEATHER FORECAST – DHAKA

08.12.2020

Hourly	2 PM	4 PM	8 PM	11 PM
Temp. / Dew Point	26 / 18	27 / 17	24 / 18	22 / 18
Wind	6 km/h WNW	8 km/h NNW	4 km/h NW	1 km/h NNW
Humidity	57%	55%	70%	73%
Chance of Precip	1%	1%	3%	5%
Cloud Cover	85%	13%	4%	2%
Conditions	Cloudy	Sunny	Clear	Clear
Sunrise Sunset	06: 29 AM 17: 11 PM			

Conditions

Pressure : 1015 hpa

Visibility : 2.5 km

Ref: <https://www.wunderground.com/weather/bd/dhaka>



WEATHER FORECAST – CHATTOGRAM

08.12.2020

Hourly	2 PM	4 PM	8 PM	11 PM
Temp. / Dew Point	26 / 17	26 / 19	23 / 20	21 / 19
Wind	8 km/h NW	8 km/h WNW	5 km/h NW	6 km/h N
Humidity	57%	62%	81%	87%
Chance of Precip.	1%	1%	4%	6%
Cloud Cover	19%	21%	10%	11%
Conditions	Sunny	Sunny	Clear	Clear
Sunrise	06: 20 AM			
Sunset	17: 08 PM			

Conditions

Pressure : 1018 hpa

Visibility : 3:22 Km

Ref: <https://www.wunderground.com/weather/bd/chittagong>



WEATHER FORECAST – KHULNA

08.12.2020

Hourly	2 PM	4 PM	8 PM	11 PM
Temp. / Dew Point	29 / 17	28 / 16	23 / 17	20 / 18
Wind	6 km/h NW	6 km/h NNW	2 km/h ENE	2 km/h SE
Humidity	48%	50%	73%	86%
Chance of Precip.	1%	1%	3%	6%
Cloud Cover	32%	24%	5%	7%
Conditions	Partly Cloudy	Sunny	Clear	Clear
Sunrise Sunset	06: 30 AM 17: 16 PM			

Conditions

Pressure : 1017 hpa

Visibility : 14.48 Km

Ref: <https://www.wunderground.com/weather/bd/khulna>



GENERAL WEATHER FORECAST – DHAKA

Description	09 Dec 2020	10 Dec 2020	11 Dec 2020
Temperature (C)	27 °C / 18 °C	28 °C / 18 °C	28 °C / 18 °C
Summary	Sunny/ AM Cloudy	Sunny	Sunny
Sun Rise/Set	6h29m48s/17h11m42s	6h30m24s/17h11m54s	6h31m12s/17h12m24s
Day Length	10h41m54s	10h41m30s	10h41m30s
Moon Rise/ Set	12:33AM 1:13PM	1:33AM 1:51PM	2:35AM 2:31PM
Moon Phase/ illu	Waning Crescent, 33%	Waning Crescent, 22%	Waning Crescent, 13%
Nautical Twilight	05:36, 18:01	05:37, 18:00	05:37, 18:00
Civil Twilight	06:03, 17:32	06:04, 17:32	06:04, 17:32
Humidity	D : 68% N : 79%	D : 68% N : 78%	D : 67% N : 79%
Barometer (mb)	1014	1013	1013
Visibility	Moderate	Moderate	Moderate
Precip Chance	5%	5%	5%
Wind (mph)	6 Km/h WNW	6 Km/h WNW	5 Km/h W

Ref: <https://weather.com/weather/5day//BGXX0003:1:BG>



GENERAL WEATHER FORECAST – CHATTOGRAM

Description	09 Dec 2020	10 Dec 2020	11 Dec 2020
Temperature (C)	27 °C/ 17 °C	27 °C/ 17 °C	27 °C/ 17 °C
Summary	Sunny/ AM Cloudy	Sunny	Sunny
Sun Rise/Set	6h21m00s/17h09m00s	6h21m30s/17h09m12s	6h22m30s/17h09m12s
Day Length	10h48m00s	10h47m42s	10h47m18s
Moon Rise/ Set	12:27AM 1:07PM	1:28AM 1:46PM	2:35AM 2:31PM
Moon Phase/ illu	Waning Crescent, 33%	Waning Crescent, 22%	Waning Crescent, 13%
Nautical Twilight	05:27 17:57	05:28 17:57	05:28 17:57
Civil Twilight	05:56, 17:30	05:56, 17:29	05:56, 17:29
Humidity	D : 71% N : 90%	D : 71% N : 91%	D : 71% N : 91%
Barometer (mb)	1015	1013	1013
Visibility	Moderate	Moderate	Moderate
Precip Chance	5%	5%	5%
Wind (mph)	8 Km/h NW	8 Km/h NNW	7 Km/h NNW

Ref: <https://weather.com/weather/5day//BGXX0002:1:BG>



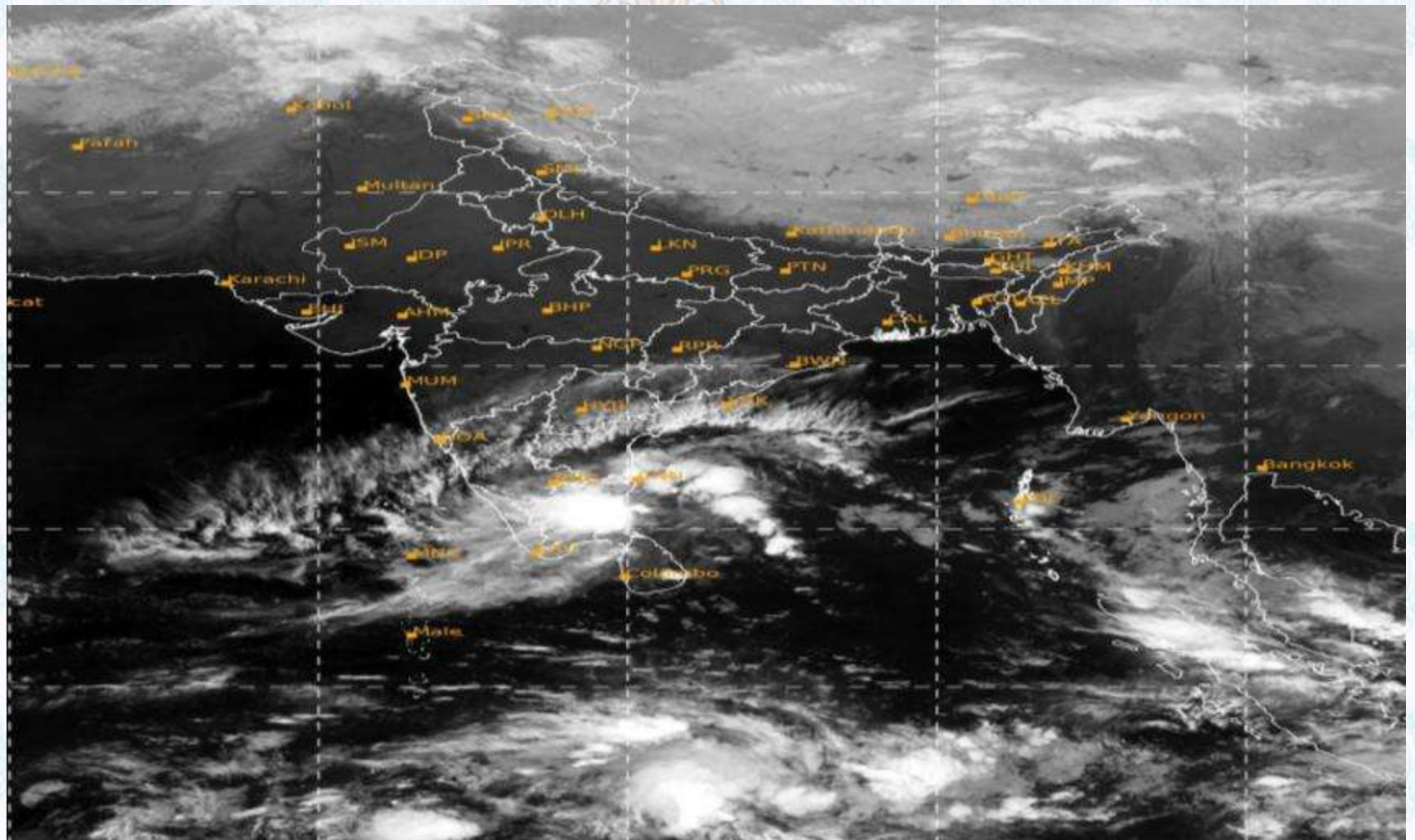
GENERAL WEATHER FORECAST – KHULNA

Description	09 Dec 2020	10 Dec 2020	11 Dec 2020
Temperature(C)	28°C/ 17°C	28°C/ 17°C	28°C/ 17°C
Summary	Sunny/ AM Cloudy	Sunny	Sunny
Sun Rise/Set	6h31m12s/17h17m06s	6h31m42s/17h17m18s	6h32m30s/17h17m48s
Day Length	10h45m54s	10h46m36s	10h45m18s
Moon Rise/Set	12:37AM 1:16PM	1:37AM 1:55PM	2:35AM 2:31PM
Moon Phase/illu	Waning Crescent, 33%	Waning Crescent, 22%	Waning Crescent, 13%
NauticalTwilight	05:39, 18:05	05:40, 18:05	05:40, 18:05
Civil Twilight	06:06, 17:37	06:07, 17:36	06:07, 17:36
Humidity	D : 65% N : 80%	D : 64% N : 78%	D : 63% N : 78%
Barometer (mb)	1015	1013	1013
Visibility	Moderate	Moderate	Moderate
Precip Chance	5%	5%	5%
Wind (mph)	9 km/h NW	8 km/h NW	7 km/h WNW

Ref: <https://weather.com/weather/5day//BGXX0005:1:BG>



SATELLITE VIEW OF BAY OF BENGAL

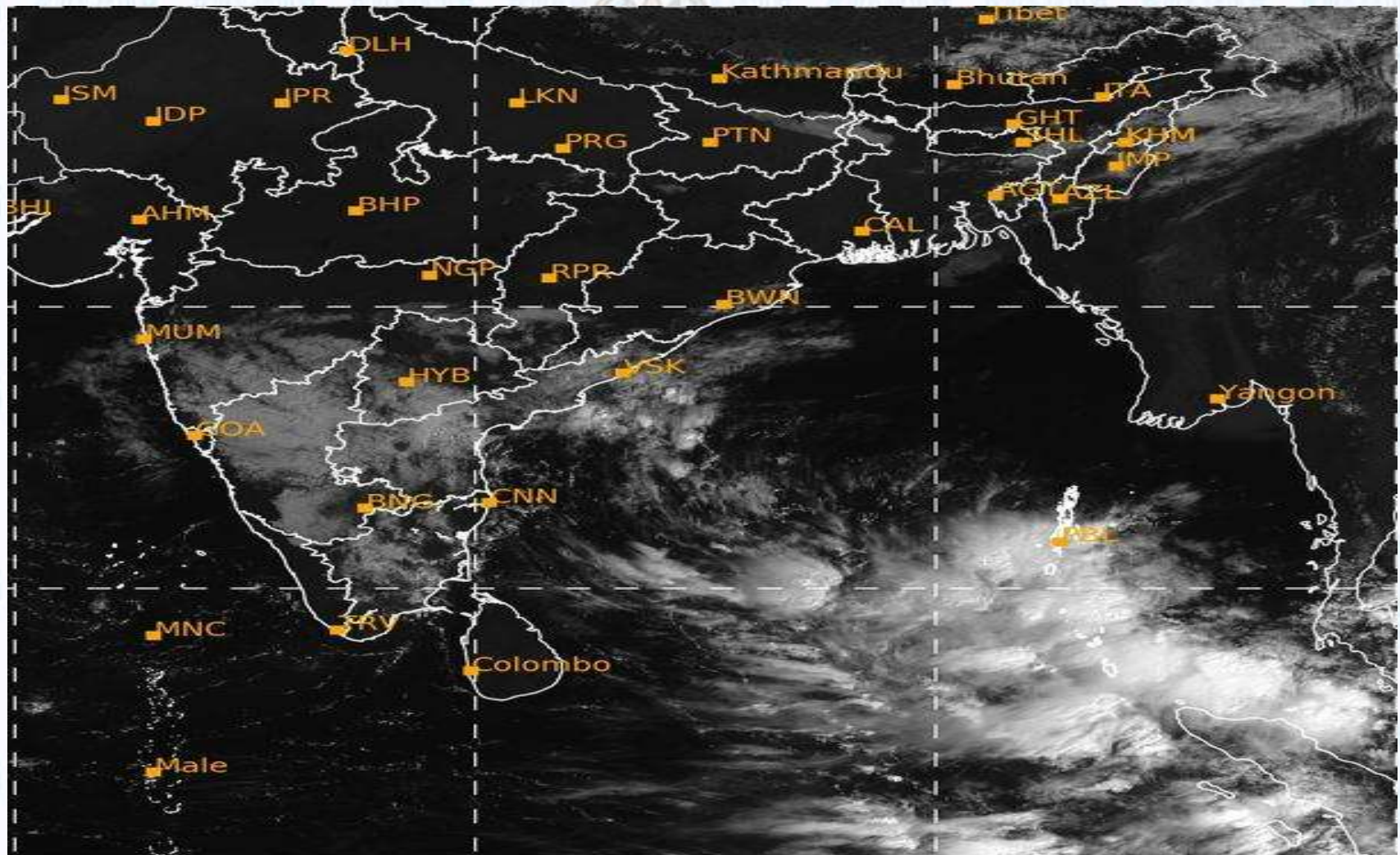


08/12/2020, 11:00 UTC MATSAT-IR

Ref: <http://satellite.imd.gov.in/insat.htm>



SATELLITE VIEW OF BAY OF BENGAL



08/12/2020, 11:00 MATSAT-VIS

Ref: <http://satellite.imd.gov.in/insat.htm>



Fleet Forecast Sea Area C-90 (Valid for 12 Hrs Commencing 1000 UTC of 08.12.2020)

Part One	NO STORM WARNING.	
Part Two	SEASONAL LOW LIES OVER SOUTH BAY EXTENDING ITS TROUGH TO NORTH BAY.	
Part Three	Weather	TEMPORARY PARTLY CLOUDY OVER AREA C-90.
	Wind	NORTH/NORTH-EASTERLY, (08-12)KTS.
	Visibility	(03-05) KMS, REDUCING TO 800 M OR LESS IN FOG.
	Outlook	FOR SUBSEQUENT 12 HOURS: LITTLE CHANGE.
	MSL Pressure	AT = 08,0000 UTC. CHATTOGRAM =1018 HPA



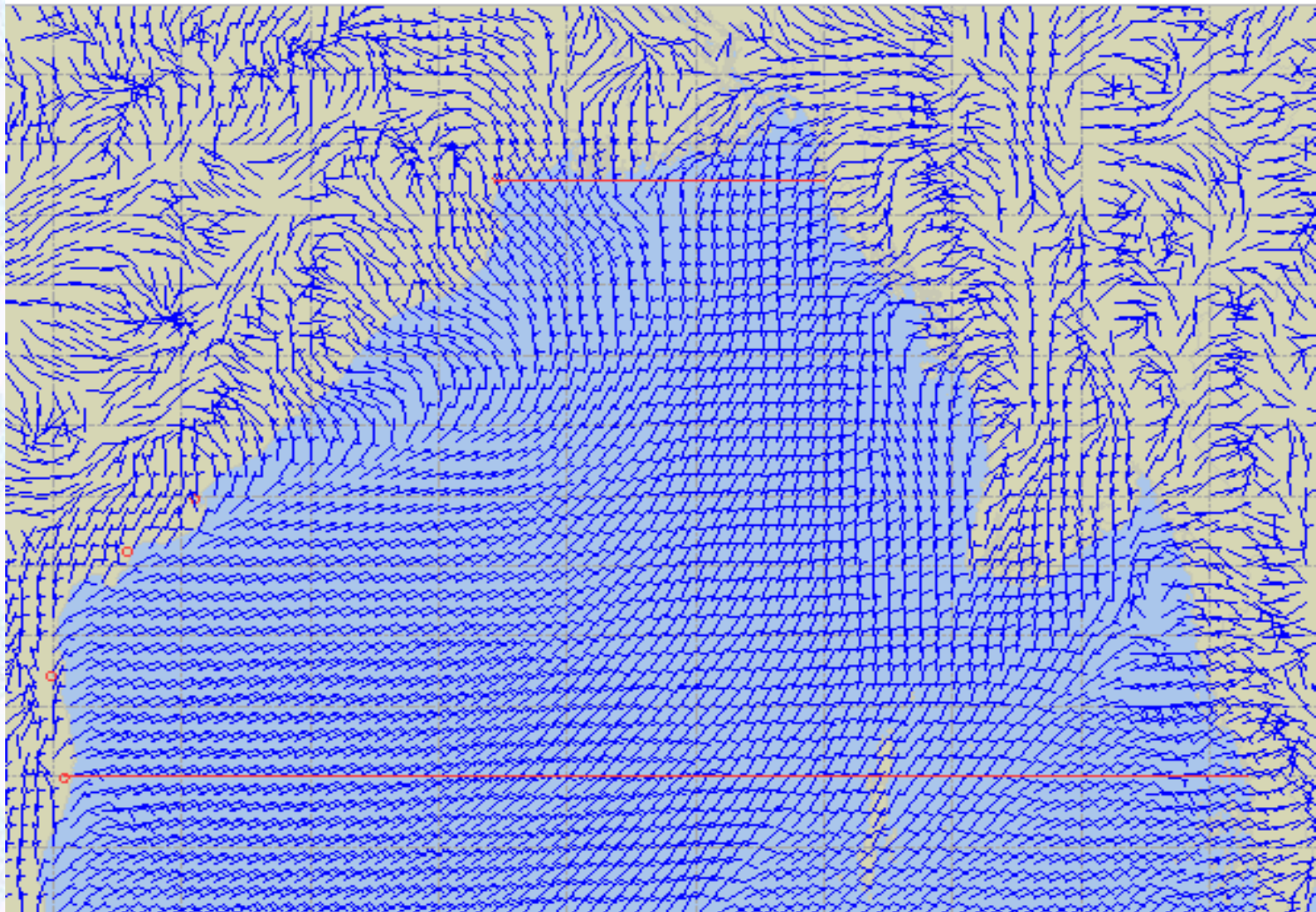
Inland River Port Warning **(VALID TILL 06 PM OF 08.12.2020)**

MODERATE TO THICK FOG MAY REDUCE THE SURFACE VISIBILITY TO 400 M OR LESS AT PLACES OVER THE RIVERBASINS OF THE COUNTRY DURING NEXT 03-04 HRS COMMENCING 09:00 AM OF 08.12.2020 WHEREIN RIVERCRAFTS SHALL PROCEED WITH CAUTION BUT NO SIGNAL IS TO BE HOISTED.

Ref: <http://www.bmd.gov.bd/?/home>



Surface Wind Forecast- 09 Dec - 2020



Legend:



**Calm
Winds**



5 Knots



10 Knots



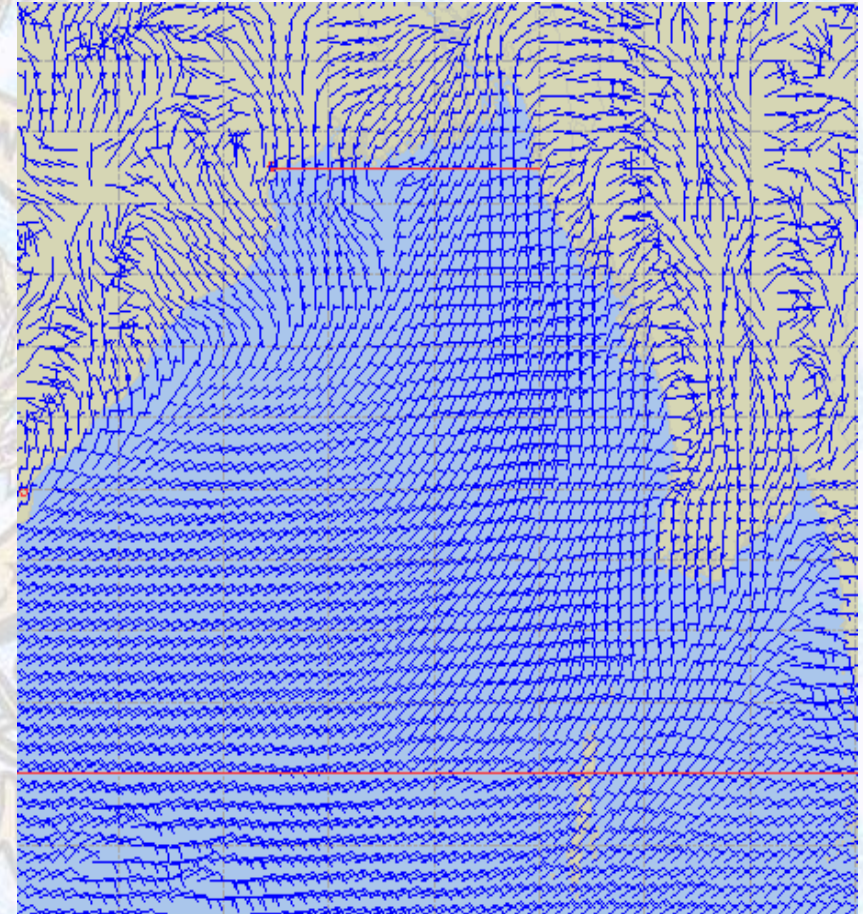
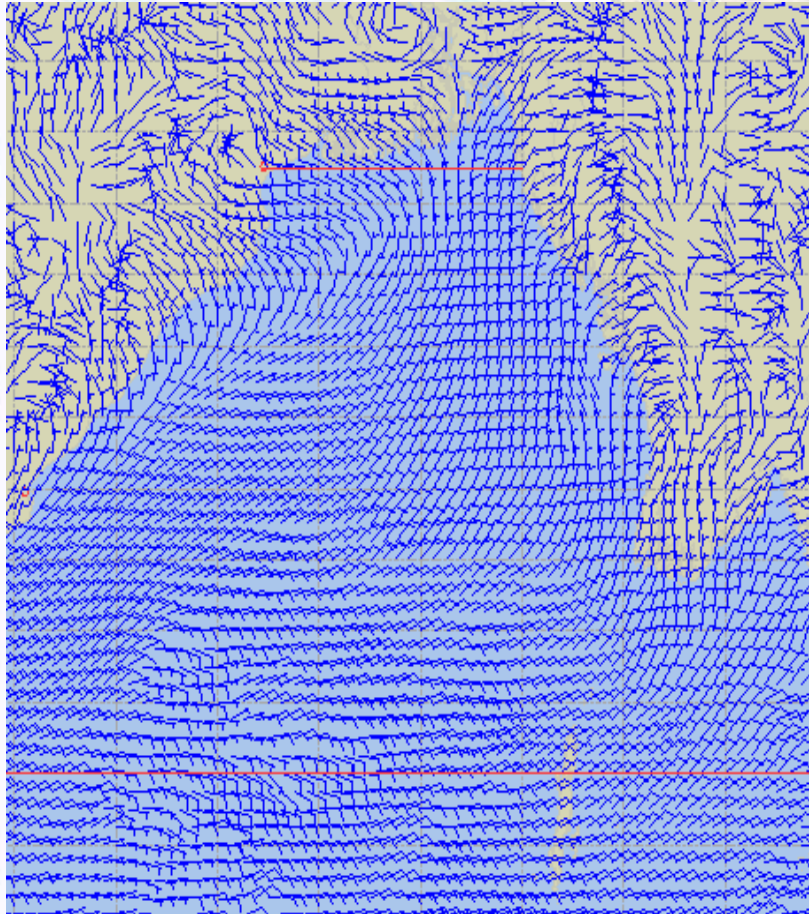
60 Knots



Surface Wind Forecast – 10 & 11 Dec - 2020

10 Dec 20 Thursday

11 Dec 20 Friday



Legend:



Calm
Winds



5 Knots



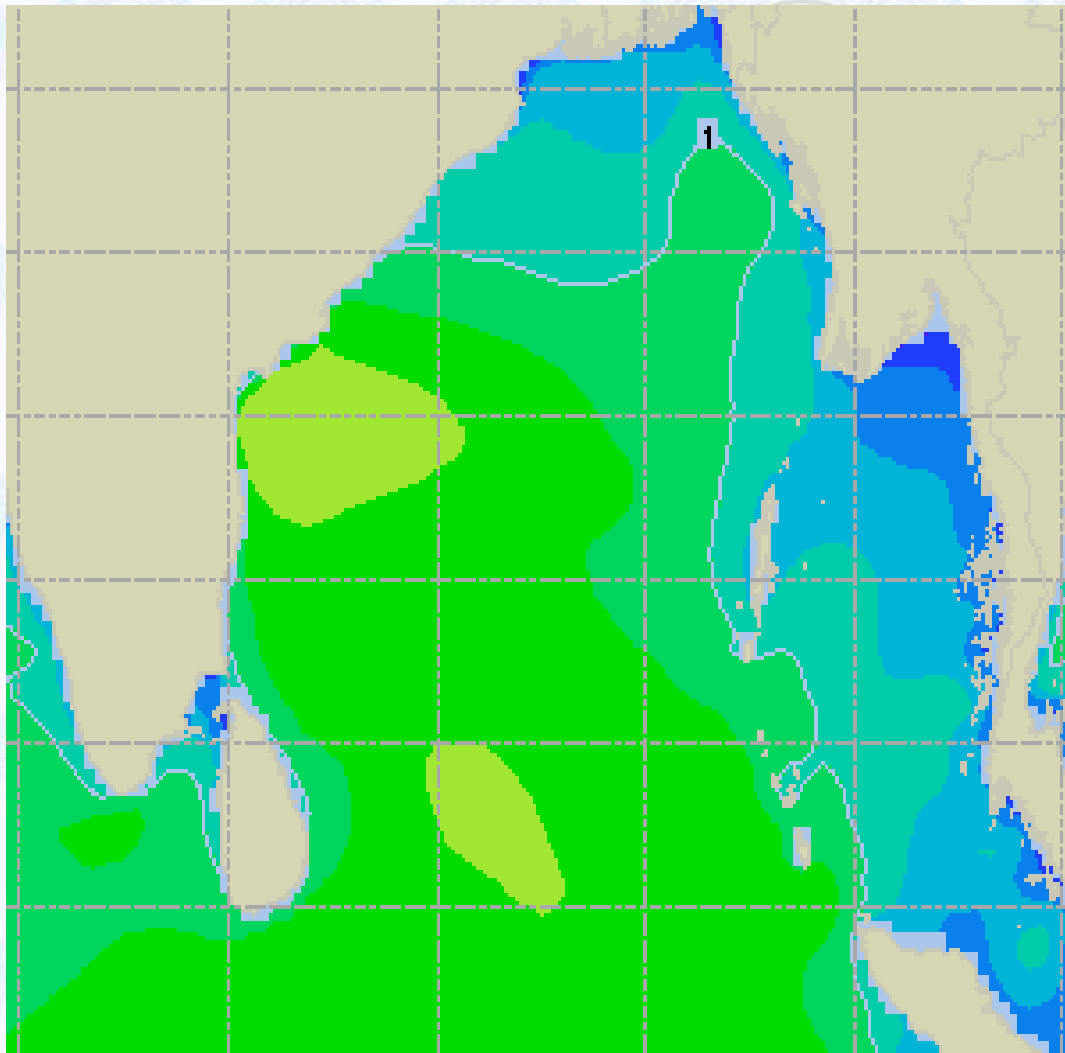
10 Knots



60 Knots



Sea State Forecast – 09 Dec - 2020



Sea State	Ht (m)
0	0-0.1
1	0-0.1
2	0.1-0.5
3	0.5-1.25
4	1.25-2.5
5	2.5-4.0
6	4-6
7	6-9
8	9-14
9	Over 14

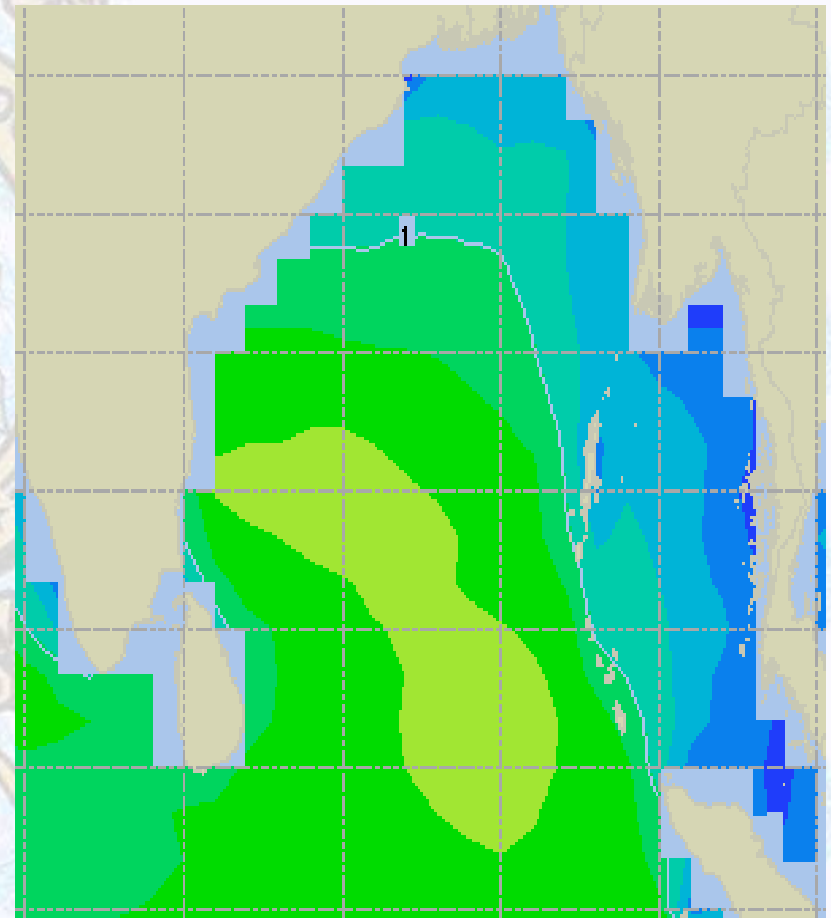
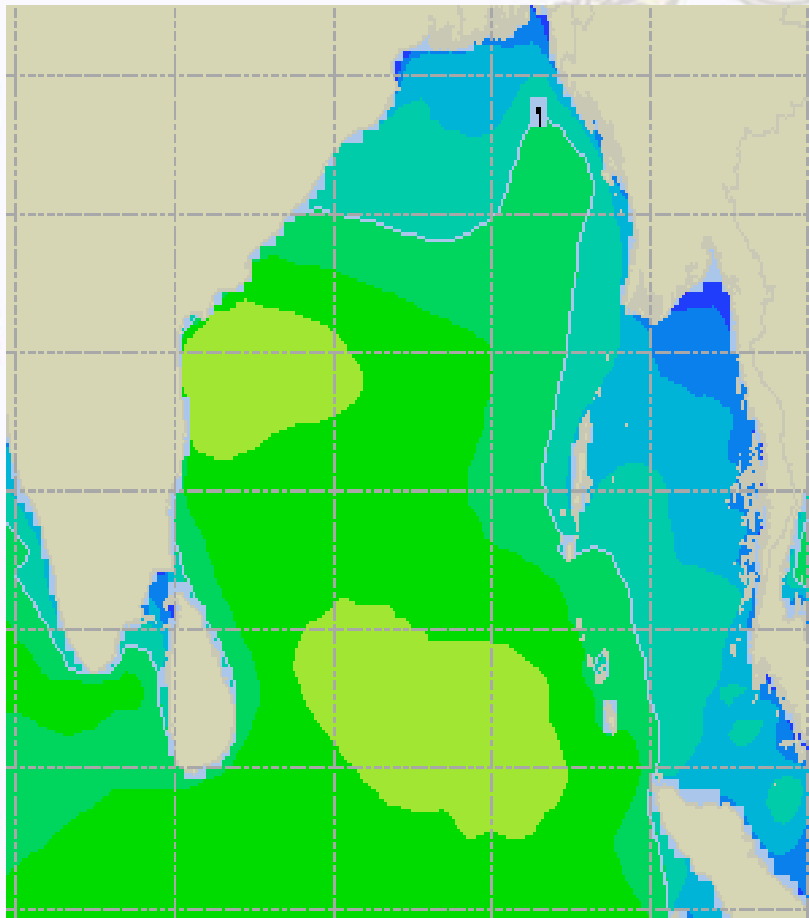




Sea State Forecast – 10 & 11 Dec - 2020

10 Dec 20 Thursday

11 Dec 20 Friday

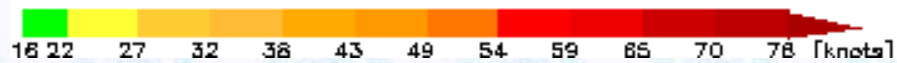
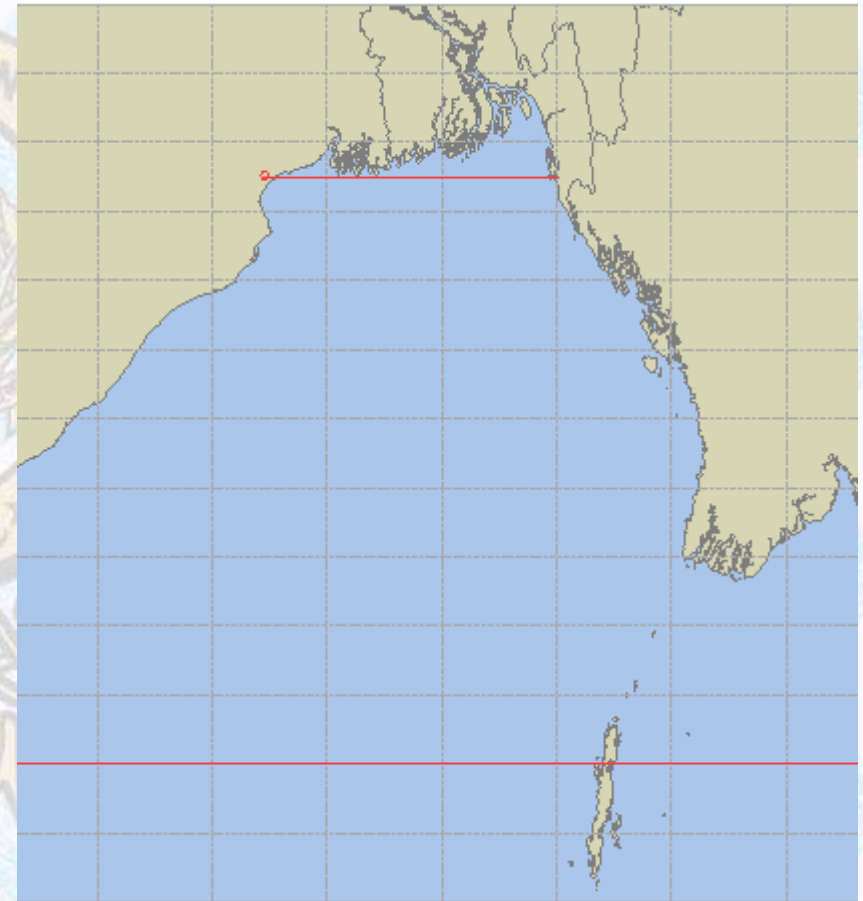
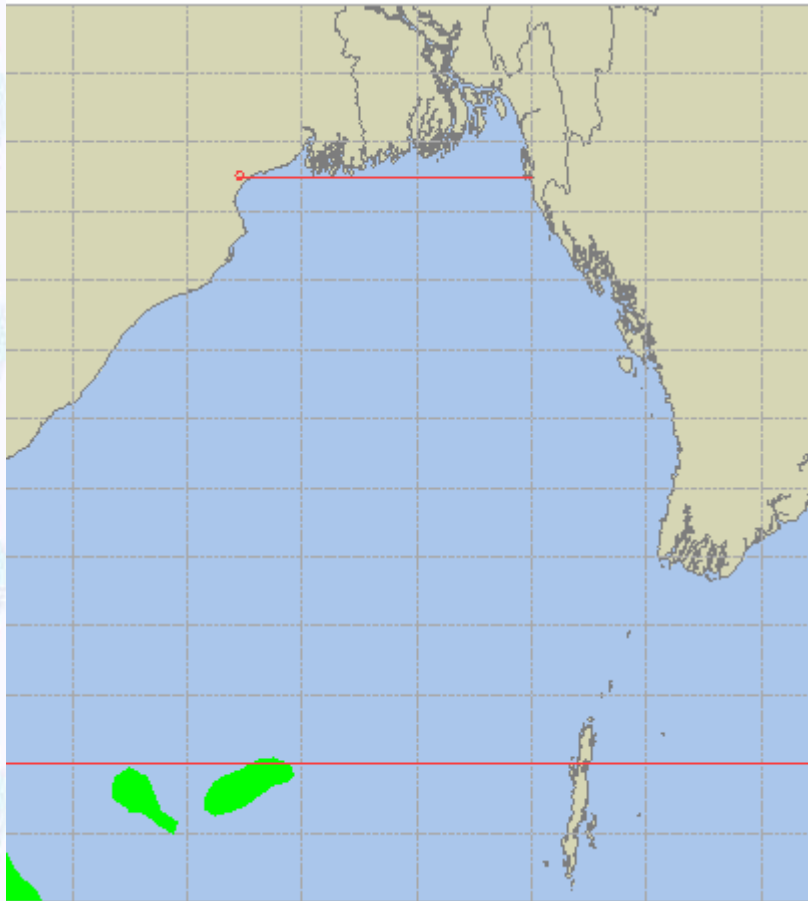




Peak Gusting Possibilities— 09 & 10 Dec 2020

09 Dec 20 Wednesday

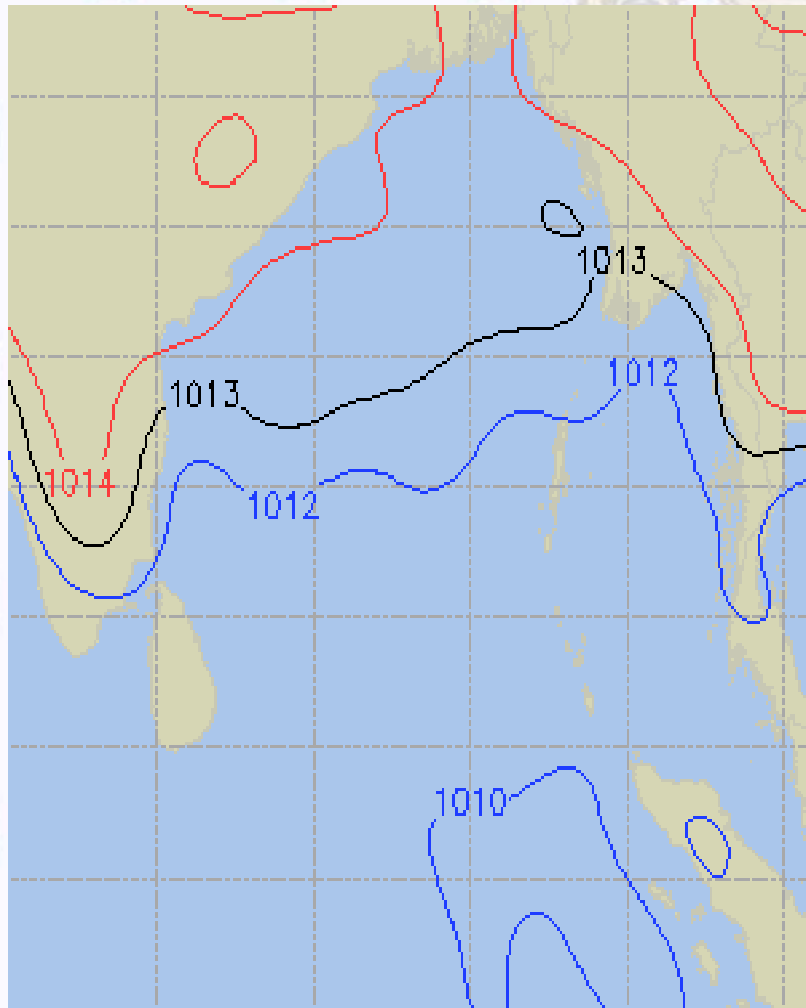
10 Dec 20 Thursday



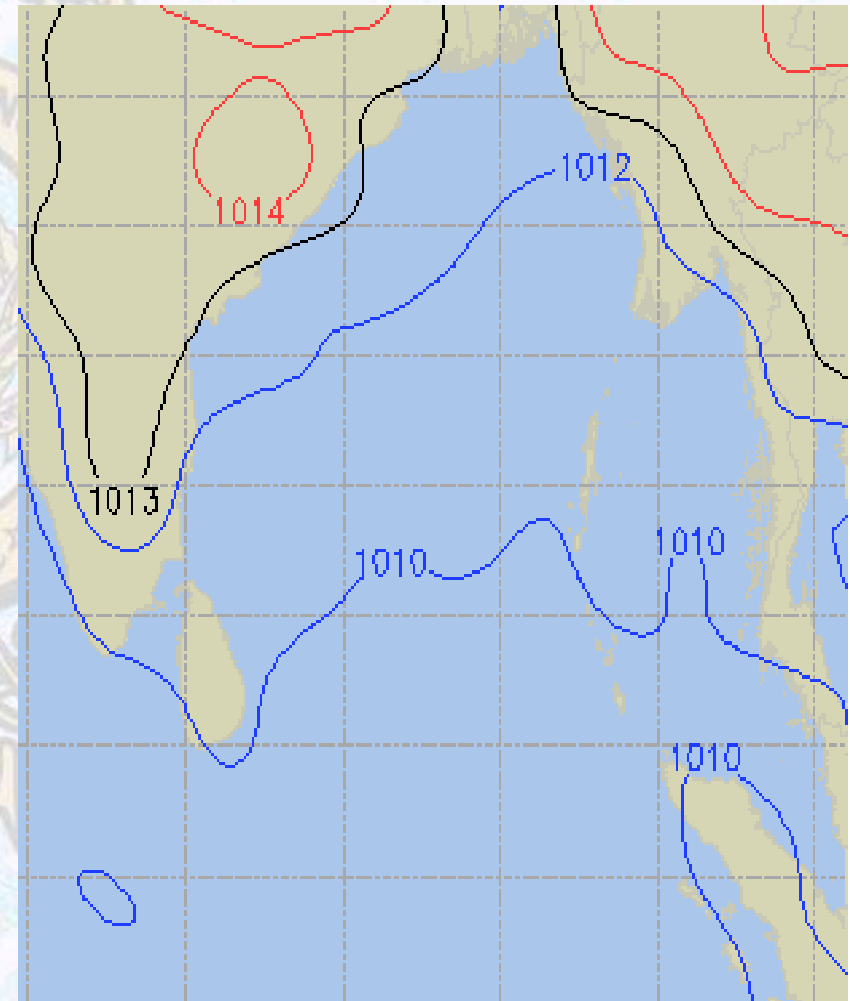


Surface Pressure forecast– 09 & 10 Dec 2020

09 Dec 20 Wednesday



10 Dec 20 Thursday

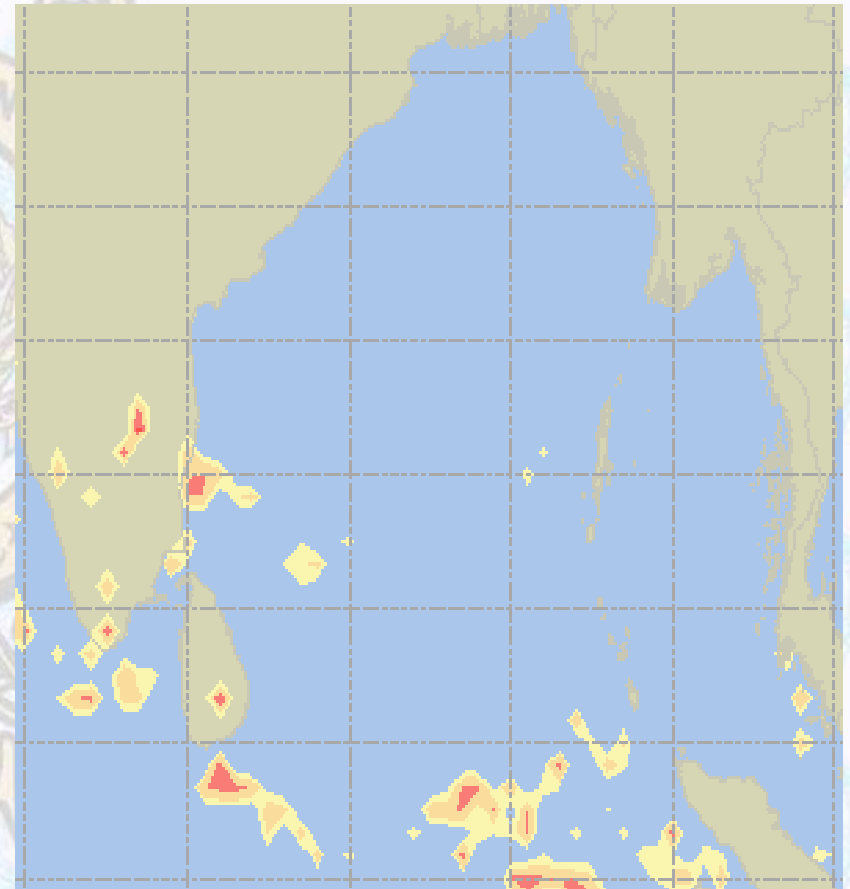
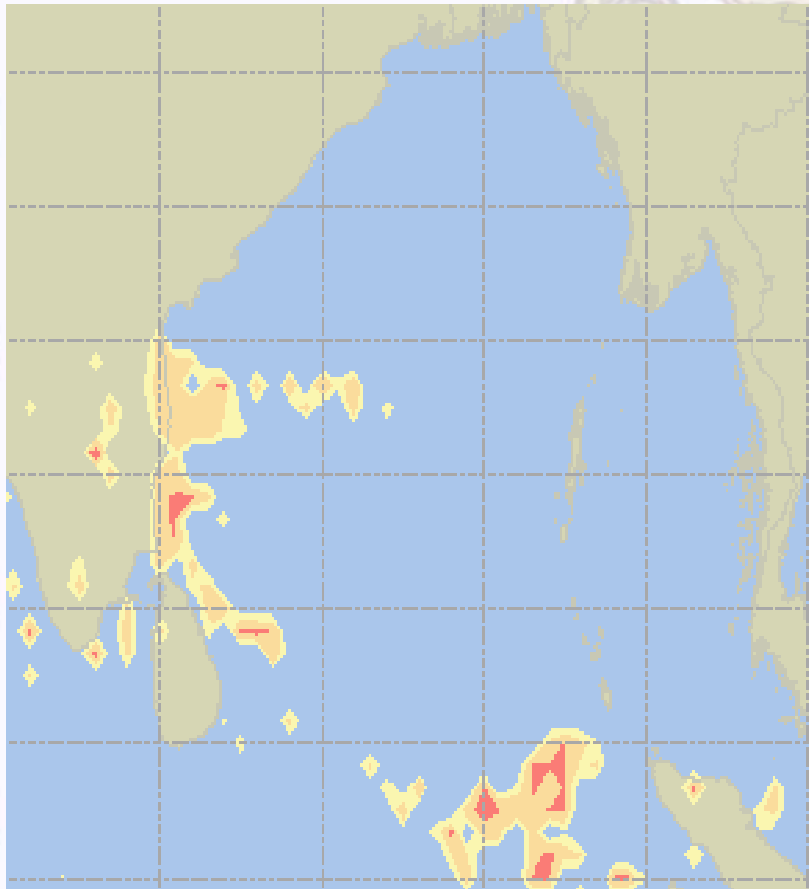




Visibility at Sea Forecast – 09 & 10 Dec 2020

09 Dec 20 Wednesday

10 Dec 20 Thursday



Visibility Scale:



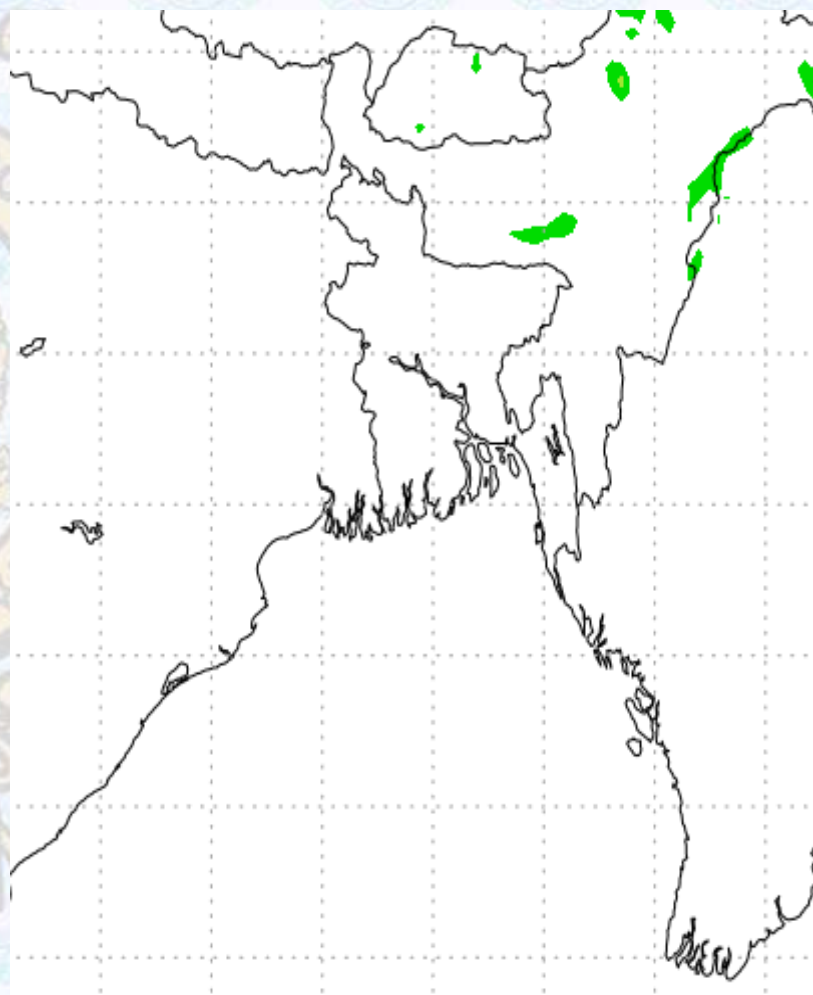
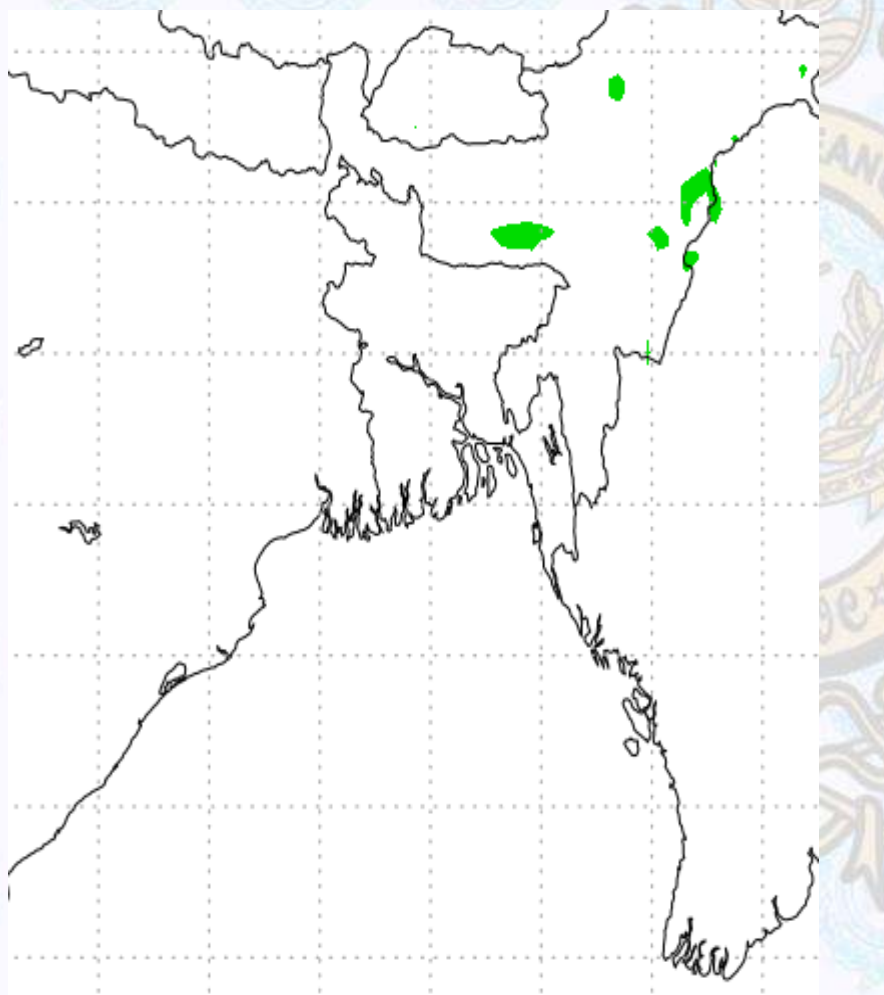
Ref (Slide 12-18): <http://www.weatheronline.co.uk/marine/weather?LEVEL>



Precipitation

Rain(mm) 09 & 10 Dec2020

Rain(mm) 10 & 11 Dec2020



Precipitation Scale (mm):





Tidal Information

KHAL NO. 10

COX'S BAZAR

HIRAN POINT

09 Dec 2020	Time	Height		Time	Height		Time	Height
	0129	1.25		0503	2.70		0449	2.54
	0729	3.80		1144	0.95		1133	0.98
	1414	0.85		1752	2.70		1755	2.53
	2025	3.90		-	-		-	-
10 Dec 2020	Time	Height		Time	Height		Time	Height
	0253	1.14		0022	1.02		0006	1.21
	0844	3.82		0617	2.73		0606	2.52
	1525	0.74		1257	0.87		1242	0.88
	2134	4.16		1903	2.93		1908	2.70
11 Dec 2020	Time	Height		Time	Height		Time	Height
	0409	0.93		0138	0.90		0124	1.10
	0954	3.91		0724	2.84		0720	2.56
	1628	0.60		1401	0.74		1346	0.75
	2233	4.40		2001	3.20		2008	2.88