



WEATHER FORECAST FOR BN

07 - 10 DEC 2020



WEATHER FORECAST – DHAKA 07.12.2020

Hourly	2 PM	4 PM	8 PM	11 PM
Temp. / Dew Point	27 / 18	27 / 17	24 / 18	22 / 18
Wind	6 km/h NW	6 km/h NNW	3 km/h NE	1 km/h NE
Humidity	57%	55%	70%	76%
Chance of Precip	1%	1%	3%	5%
Cloud Cover	5%	3%	4%	2%
Conditions	Sunny	Sunny	Clear	Clear
Sunrise Sunset	06: 28 AM 17: 11 PM			

Conditions

Pressure : 1018 hpa

Visibility : 1.5 km

Ref: <https://www.wunderground.com/weather/bd/dhaka>



WEATHER FORECAST – CHATTOGRAM 07.12.2020

Hourly	2 PM	4 PM	8 PM	11 PM
Temp. / Dew Point	26 / 17	26 / 19	23 / 20	21 / 19
Wind	11 km/h NW	8 km/h WNW	8 km/h NW	7 km/h N
Humidity	57%	62%	81%	87%
Chance of Precip.	1%	1%	4%	6%
Cloud Cover	19%	1%	1%	1%
Conditions	Sunny	Sunny	Clear	Clear
Sunrise Sunset	06: 19 AM 17: 08 PM			

Conditions

Pressure : 1018 hpa

Visibility : 3:22 Km

Ref: <https://www.wunderground.com/weather/bd/chittagong>



WEATHER FORECAST – KHULNA 07.12.2020

Hourly	2 PM	4 PM	8 PM	11 PM
Temp. / Dew Point	29 / 17	28 / 16	23 / 17	20 / 18
Wind	6 km/h NW	6 km/h NNW	2 km/h ENE	2 km/h SE
Humidity	48%	50%	73%	86%
Chance of Precip.	1%	1%	3%	6%
Cloud Cover	1%	1%	1%	1%
Conditions	Sunny	Sunny	Clear	Clear
Sunrise Sunset	06: 30 AM 17: 16 PM			

Conditions

Pressure : 1017 hpa

Visibility : 14.48 Km

Ref: <https://www.wunderground.com/weather/bd/khulna>



GENERAL WEATHER FORECAST – DHAKA

Description	08 Dec 2020	09 Dec 2020	10 Dec 2020
Temperature (C)	28 °C/ 18 °C	28 °C/ 18 °C	28 °C/ 19 °C
Summary	Sunny	Sunny	Sunny
Sun Rise/Set	6h29m12s/17h11m24s	6h29m48s/17h11m42s	6h30m24s/17h11m54s
Day Length	10h42m12s	10h41m54s	10h41m30s
Moon Rise/ Set	- 12:34PM	12:33AM 1:13PM	1:33AM 1:51PM
Moon Phase/ illu	Last Quarter, 44%	Waning Crescent, 33%	Waning Crescent, 22%
Nautical Twilight	05:36, 18:01	05:36, 18:01	05:37, 18:00
Civil Twilight	06:03, 17:33	06:03, 17:32	06:04, 17:32
Humidity	D : 65% N : 79%	D : 68% N : 79%	D : 67% N : 79%
Barometer (mb)	1016	1014	1013
Visibility	Moderate	Moderate	Moderate
Precip Chance	5%	5%	5%
Wind (mph)	8 Km/h WNW	7 Km/h W	7 Km/h WNW

Ref: <https://weather.com/weather/5day//BGXX0003:1:BG>



GENERAL WEATHER FORECAST– CHATTOGRAM

Description	08 Dec 2020	09 Dec 2020	10 Dec 2020
Temperature (C)	27 °C/ 17 °C	27 °C/ 17 °C	27 °C/ 17 °C
Summary	Sunny	Sunny	Sunny
Sun Rise/Set	6h20m24s/17h08m42s	6h21m00s/17h09m00s	6h21m30s/17h09m12s
Day Length	10h48m18s	10h48m00s	10h47m42s
Moon Rise/ Set	- 12:27PM	12:27AM 1:07PM	1:28AM 1:46PM
Moon Phase/ illu	Last Quarter, 44%	Waning Crescent, 33%	Waning Crescent, 22%
Nautical Twilight	05:27 17:58	05:27 17:57	05:28 17:57
Civil Twilight	05:55, 17:30	05:56, 17:30	05:56, 17:29
Humidity	D : 70% N : 88%	D : 71% N : 90%	D : 71% N : 91%
Barometer (mb)	1016	1015	1013
Visibility	Moderate	Moderate	Moderate
Precip Chance	5%	5%	5%
Wind (mph)	8 Km/h NNW	8 Km/h NW	8 Km/h NNW

Ref: <https://weather.com/weather/5day/l/BGXX0002:1:BG>



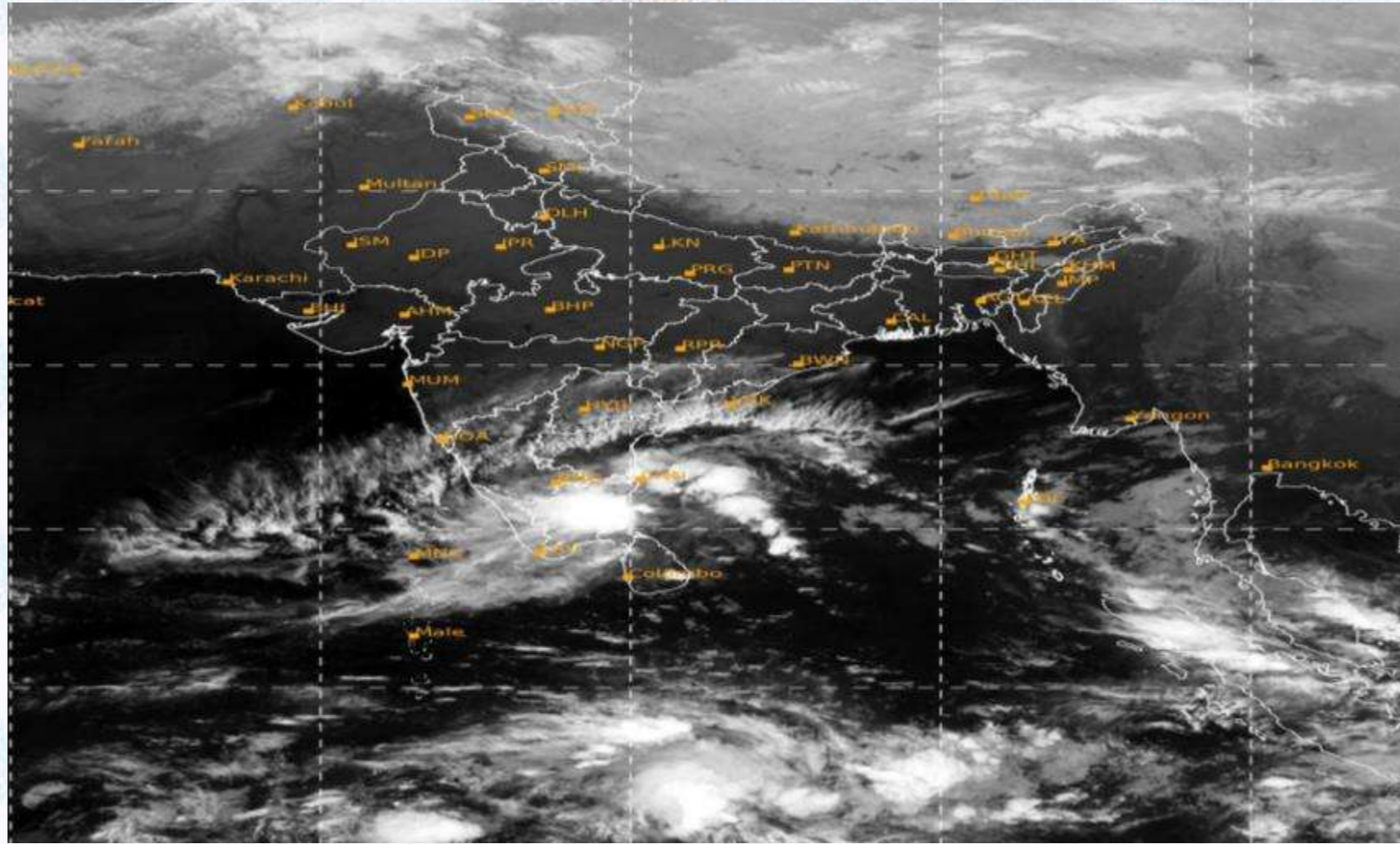
GENERAL WEATHER FORECAST – KHULNA

Description	08 Dec 2020	09 Dec 2020	10 Dec 2020
Temperature(C)	28°C/ 17°C	28°C/ 17°C	28°C/ 17°C
Summary	Sunny	Sunny	Sunny
Sun Rise/Set	6h30m36s/17h16m48s	6h31m12s/17h17m06s	6h31m42s/17h17m18s
Day Length	10h46m12s	10h45m54s	10h46m36s
Moon Rise/Set	- 12:37PM	12:37AM 1:16PM	1:37AM 1:55PM
Moon Phase/illu	Last Quarter, 44%	Waning Crescent, 33%	Waning Crescent, 22%
Nautical Twilight	05:39, 18:06	05:39, 18:05	05:40, 18:05
Civil Twilight	06:05, 17:38	06:06, 17:37	06:07, 17:36
Humidity	D : 66% N : 80%	D : 65% N : 80%	D : 63% N : 78%
Barometer (mb)	1016	1015	1013
Visibility	Moderate	Moderate	Moderate
Precip Chance	5%	5%	5%
Wind (mph)	9 km/h WNW	10 km/h WNW	9 km/h WNW

Ref: <https://weather.com/weather/5day//BGXX0005:1:BG>



SATELLITE VIEW OF BAY OF BENGAL

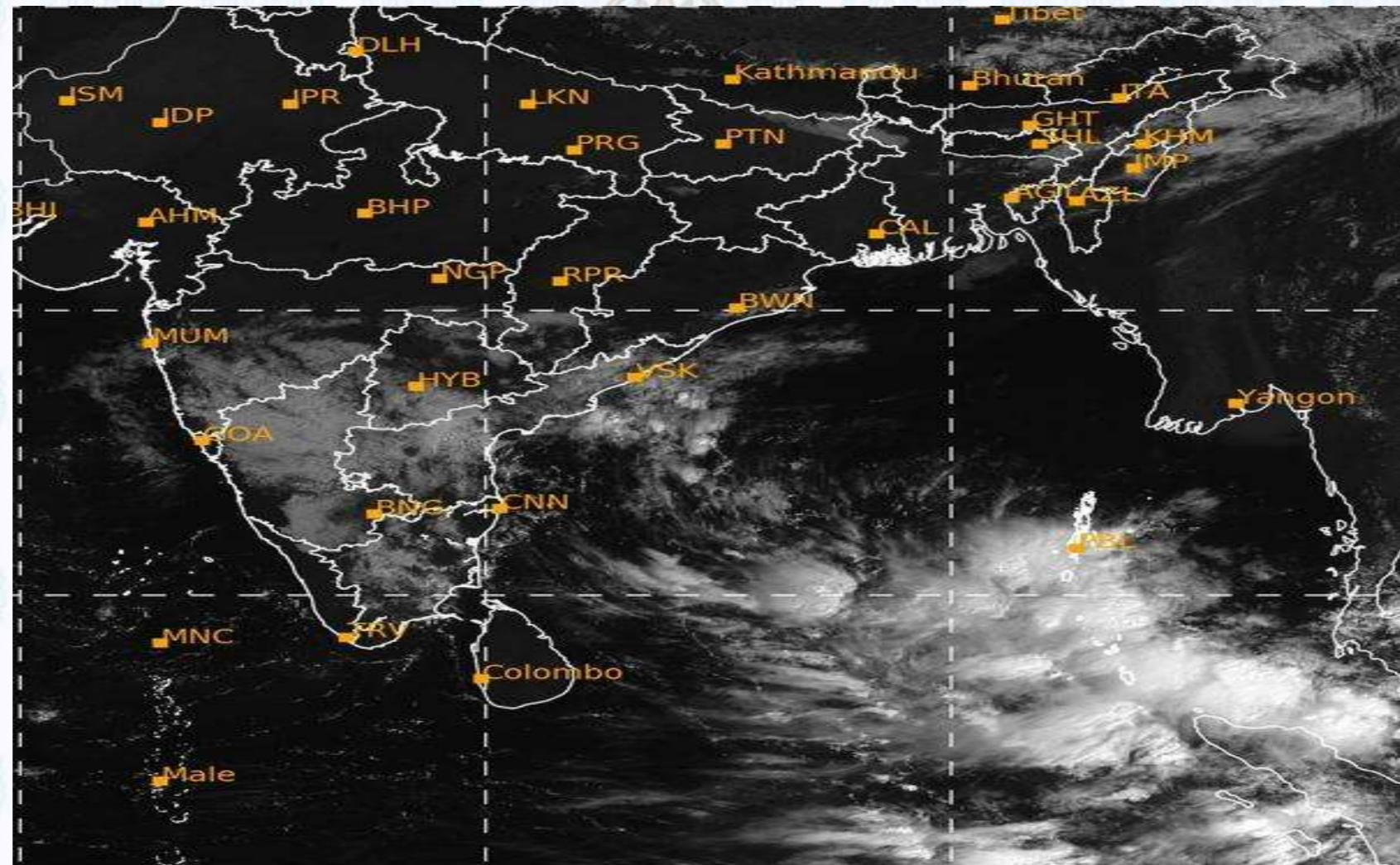


07/12/2020, 11:00 UTC MATSAT-IR

Ref: <http://satellite.imd.gov.in/insat.htm>



SATELLITE VIEW OF BAY OF BENGAL



07/12/2020, 11:00 MATSAT-VIS

Ref: <http://satellite.imd.gov.in/insat.htm>



Fleet Forecast Sea Area C-90 (Valid for 12 Hrs Commencing 1000 UTC of 07.12.2020)

Part One	NO STORM WARNING.	
Part Two	SEASONAL LOW LIES OVER SOUTH BAY EXTENDING ITS TROUGH TO NORTH BAY.	
Part Three	Weather	TEMPORARY PARTLY CLOUDY OVER AREA C-90.
	Wind	NORTH/NORTH-EASTERLY, (08-12)KTS.
	Visibility	(03-05) KMS, REDUCING TO 1500 M OR LESS IN MIST/HAZE.
	Outlook	FOR SUBSEQUENT 12 HOURS: LITTLE CHANGE.
	MSL Pressure	AT = 07,0000 UTC. CHATTOGRAM =1018 HPA



Inland River Port Warning **(VALID TILL 06 PM OF 07.12.2020)**

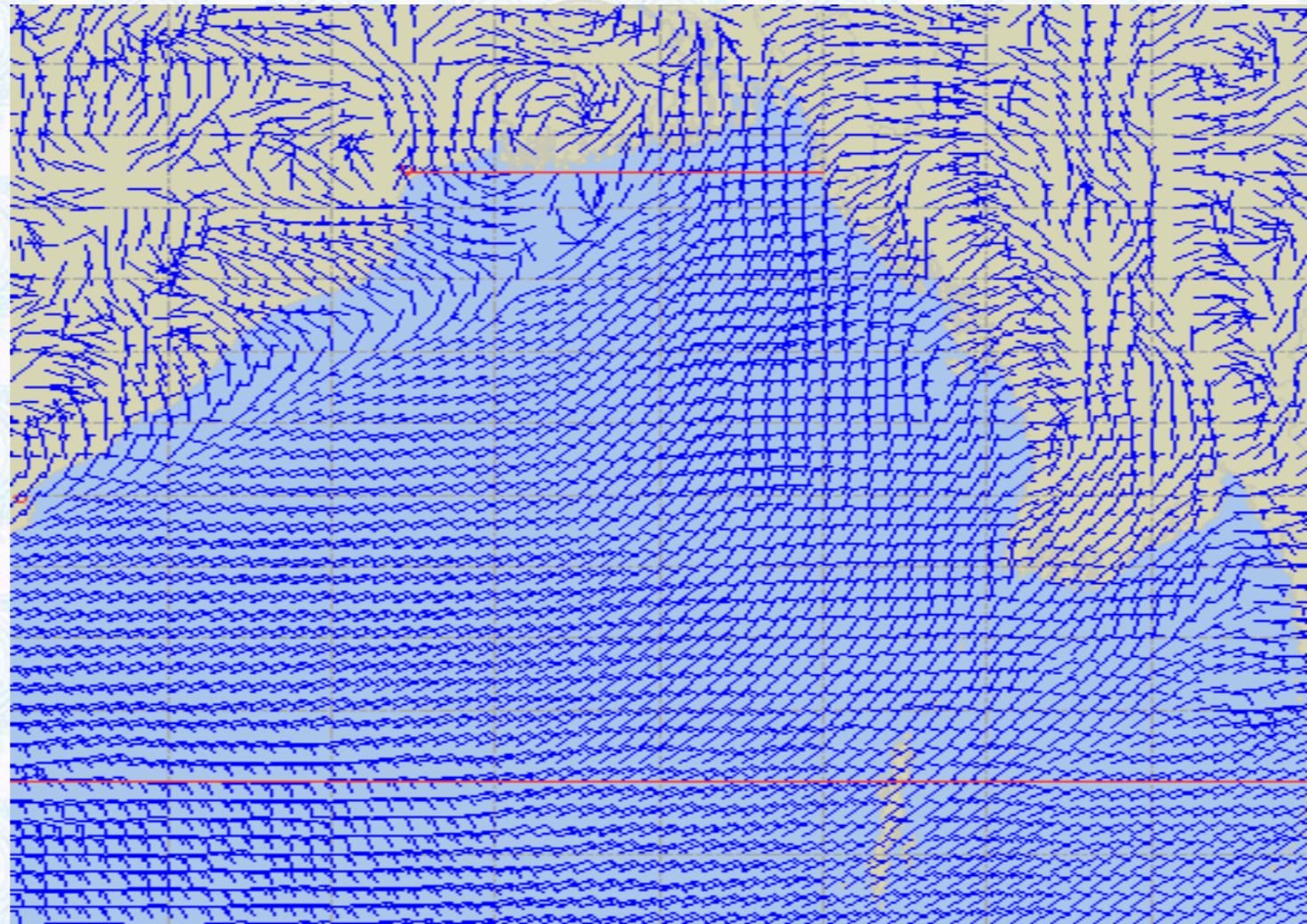
THERE IS NO INLAND RIVERPORT WARNING AND NO SIGNAL IS TO BE HOISTED.



Ref: <http://www.bmd.gov.bd/?/home>



Surface Wind Forecast- 08 Dec - 2020



Legend:



Calm Winds



5 Knots



10 Knots



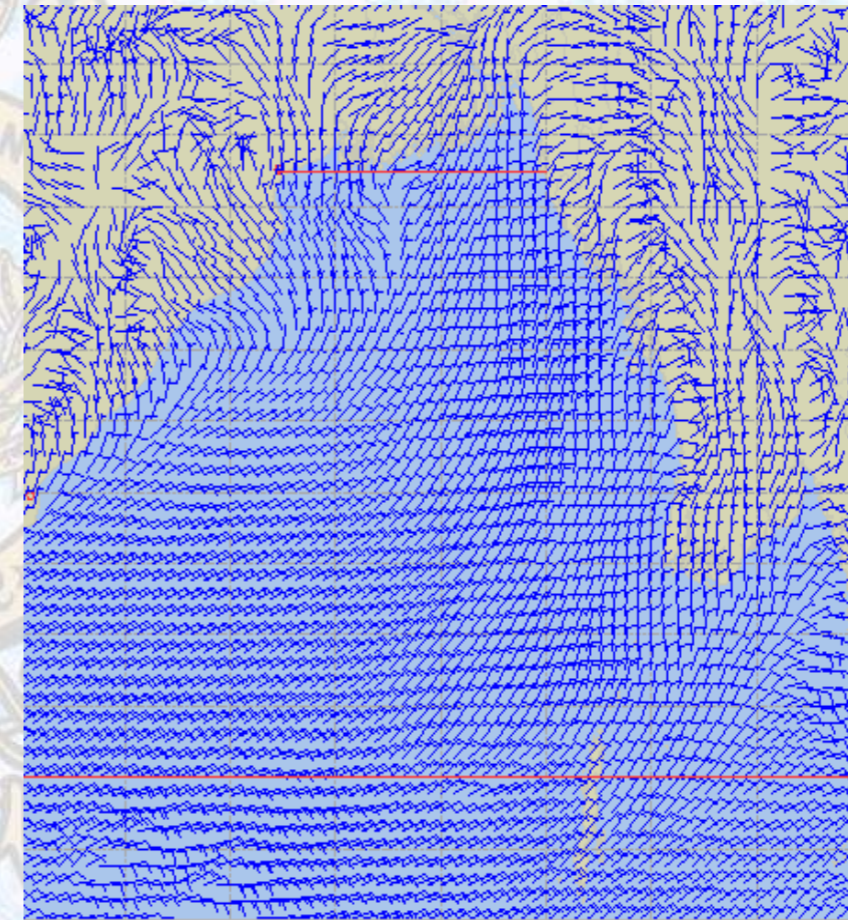
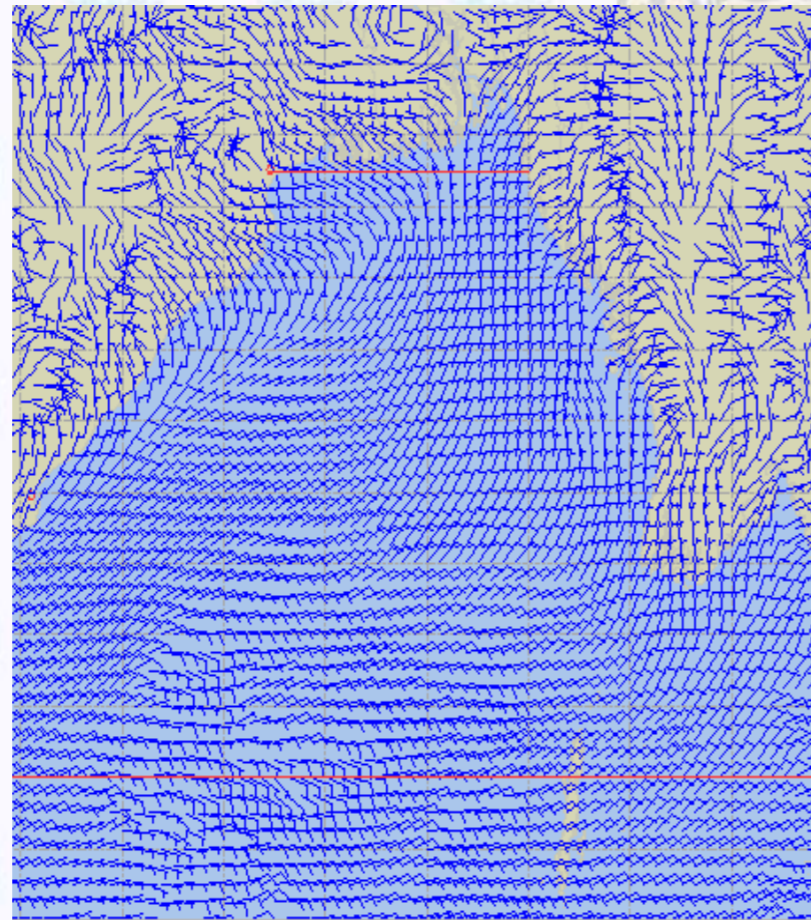
60 Knots



Surface Wind Forecast – 09 & 10 Dec - 2020

09 Dec 20 Wednesday

10 Dec 20 Thursday



Legend:



Calm
Winds



5 Knots



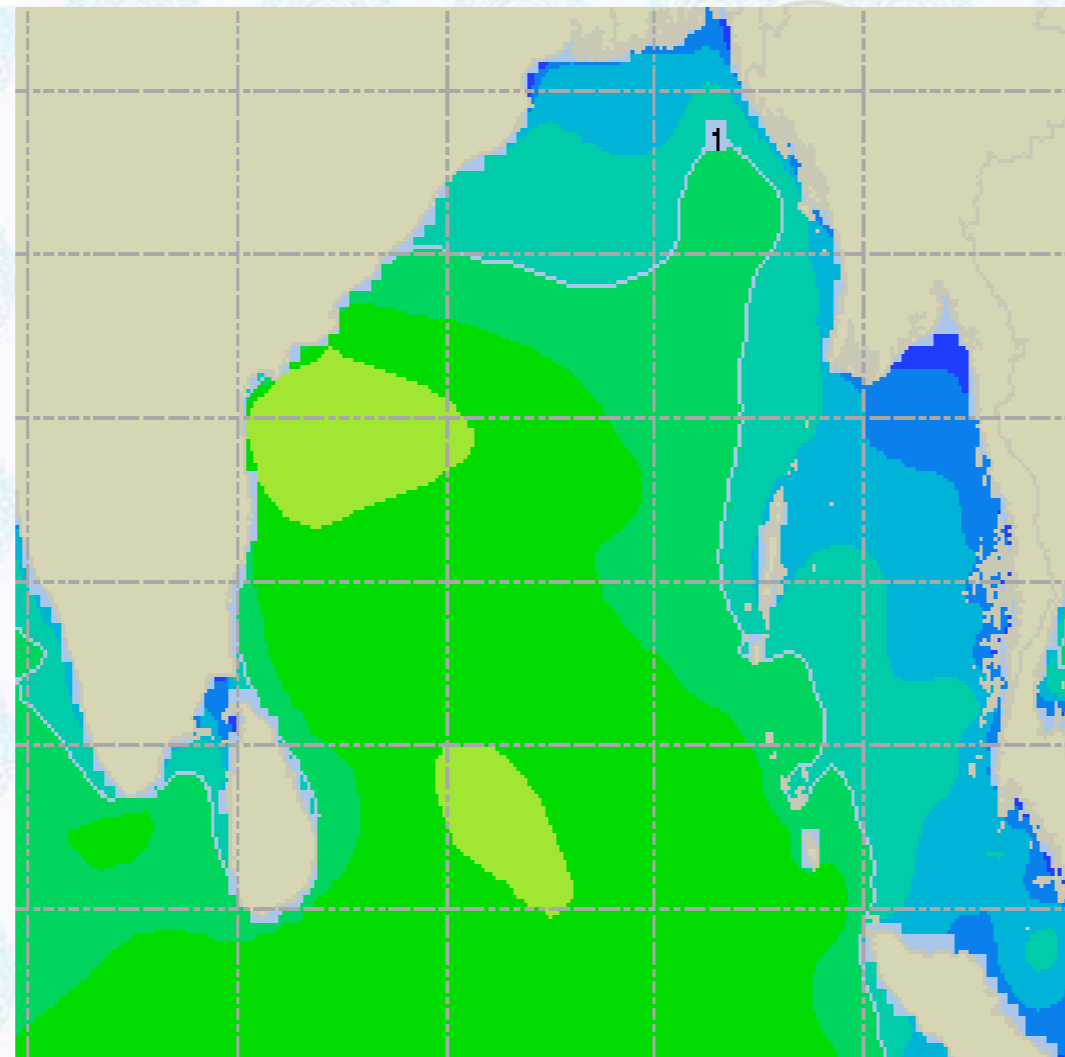
10 Knots



60 Knots



Sea State Forecast – 08 Dec - 2020



Sea State	Ht (m)
0	0-0.1
1	0-0.1
2	0.1-0.5
3	0.5-1.25
4	1.25-2.5
5	2.5-4.0
6	4-6
7	6-9
8	9-14
9	Over 14

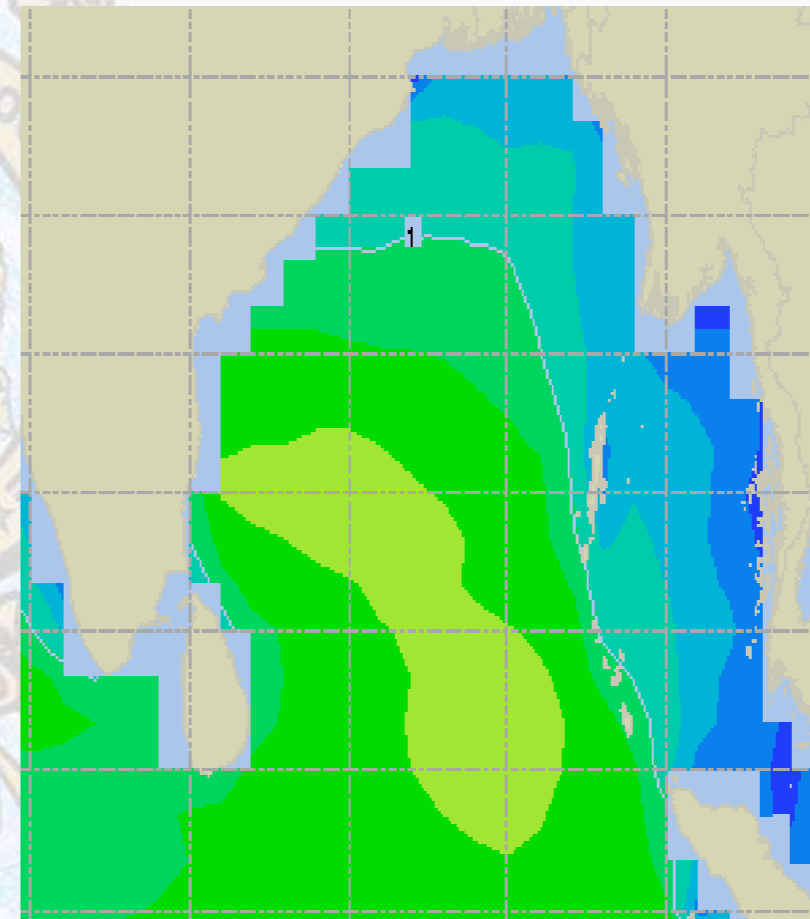
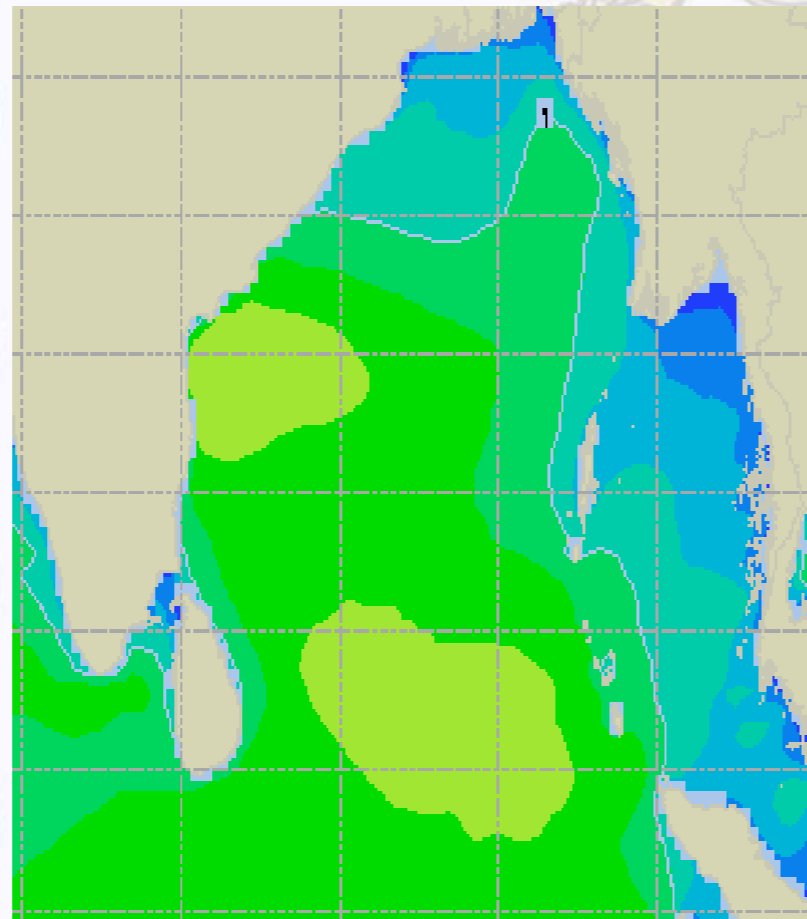




Sea State Forecast – 09 & 10 Dec - 2020

09 Dec 20 Wednesday

10 Dec 20 Thursday

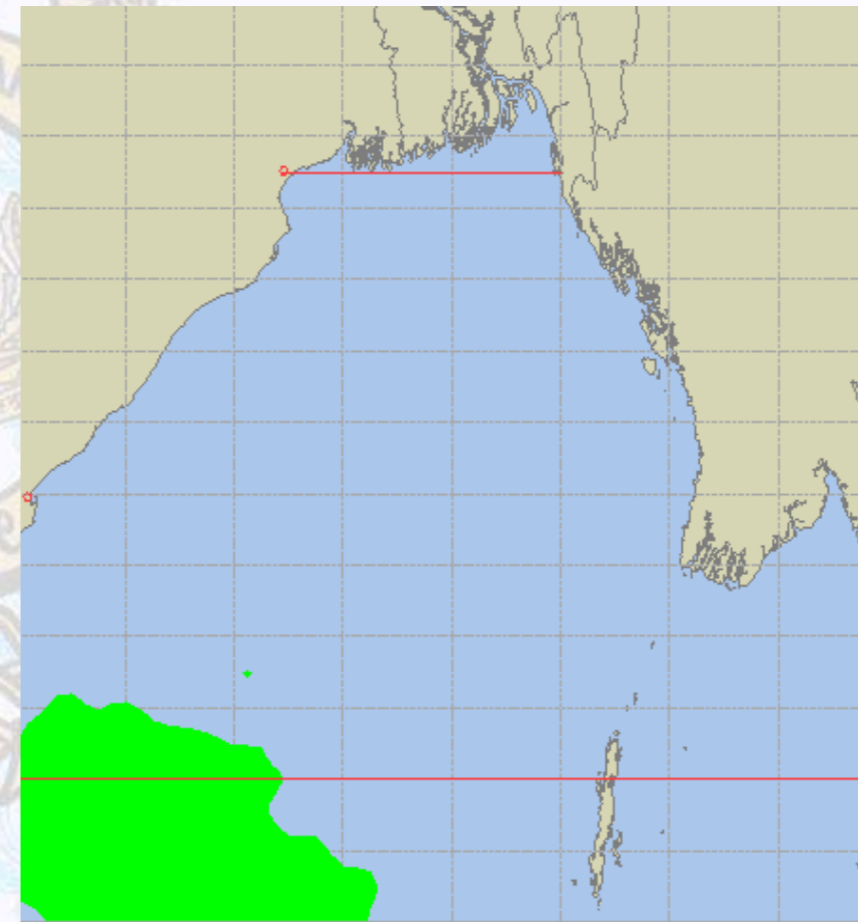
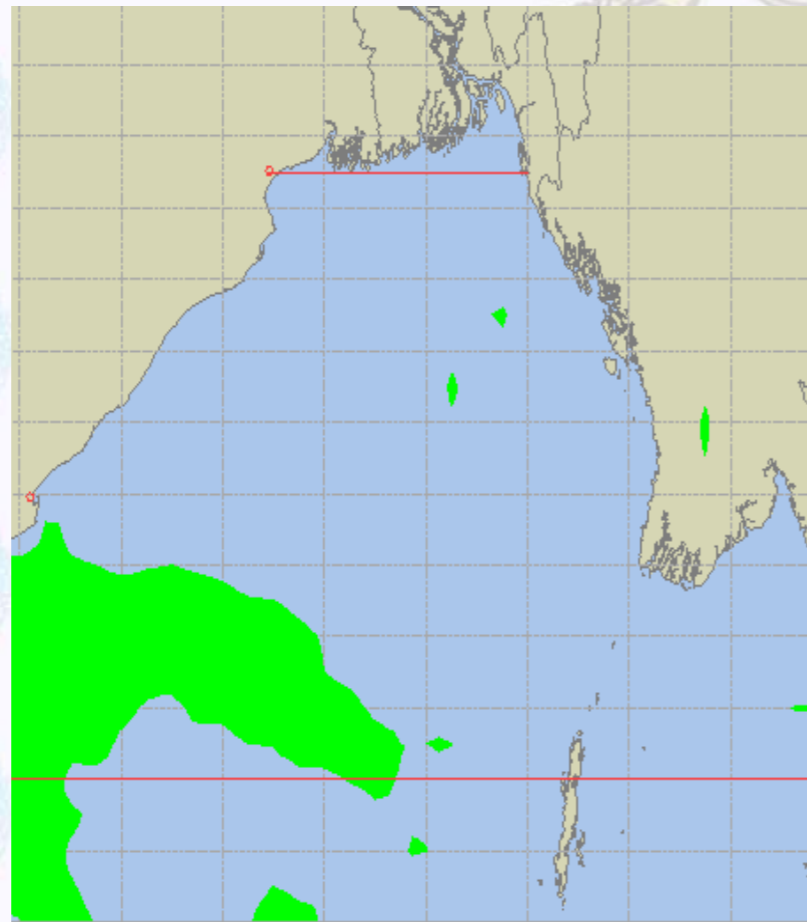




Peak Gusting Possibilities— 08 & 09 Dec 2020

08 Dec 20 Tuesday

09 Dec 20 Wednesday



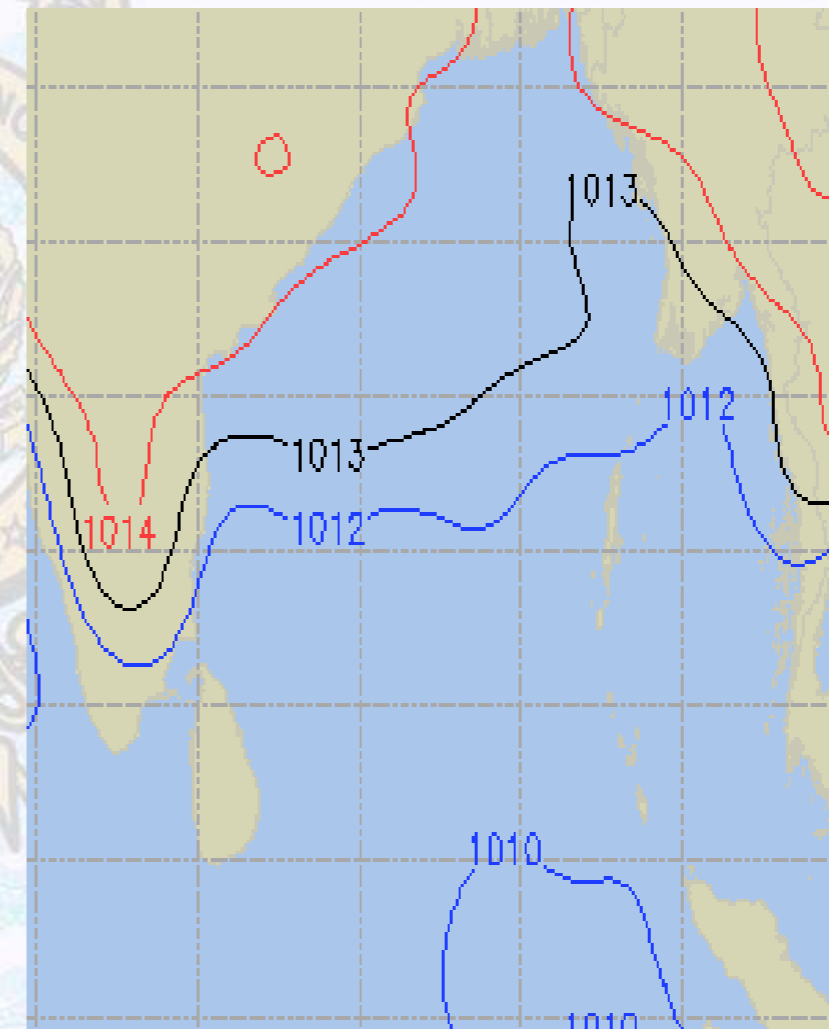
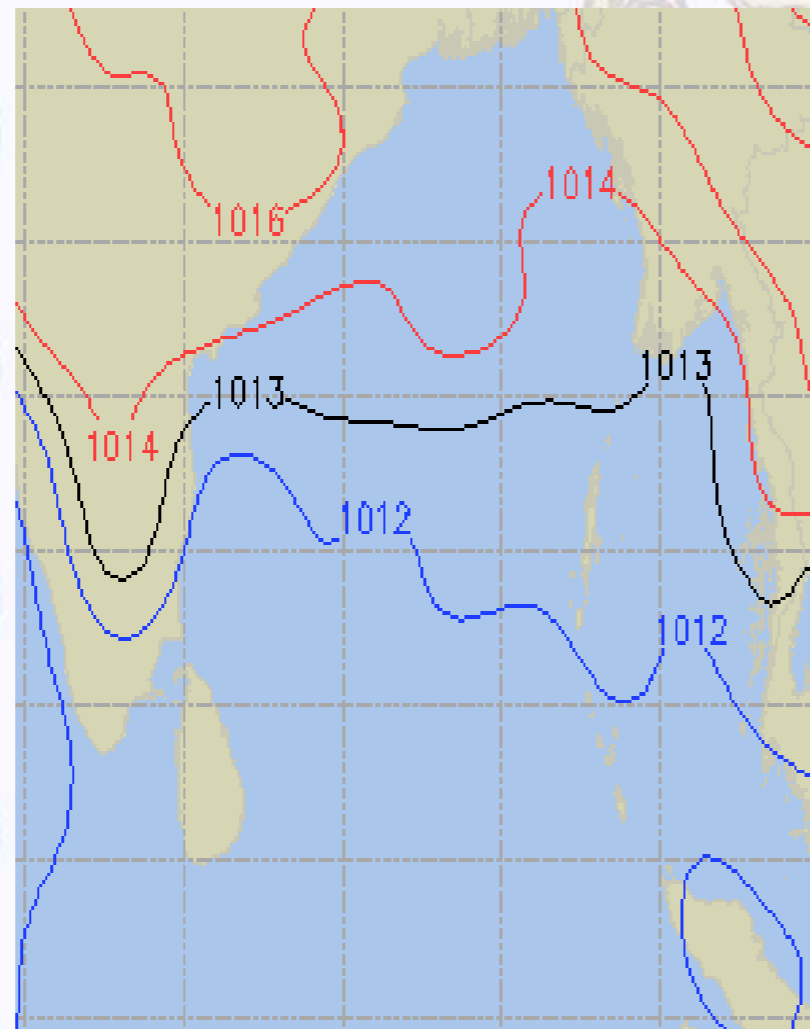
16 22 27 32 38 43 49 54 59 65 70 76 [knots]



Surface Pressure forecast– 08 & 09 Dec 2020

08 Dec 20 Tuesday

09 Dec 20 Wednesday

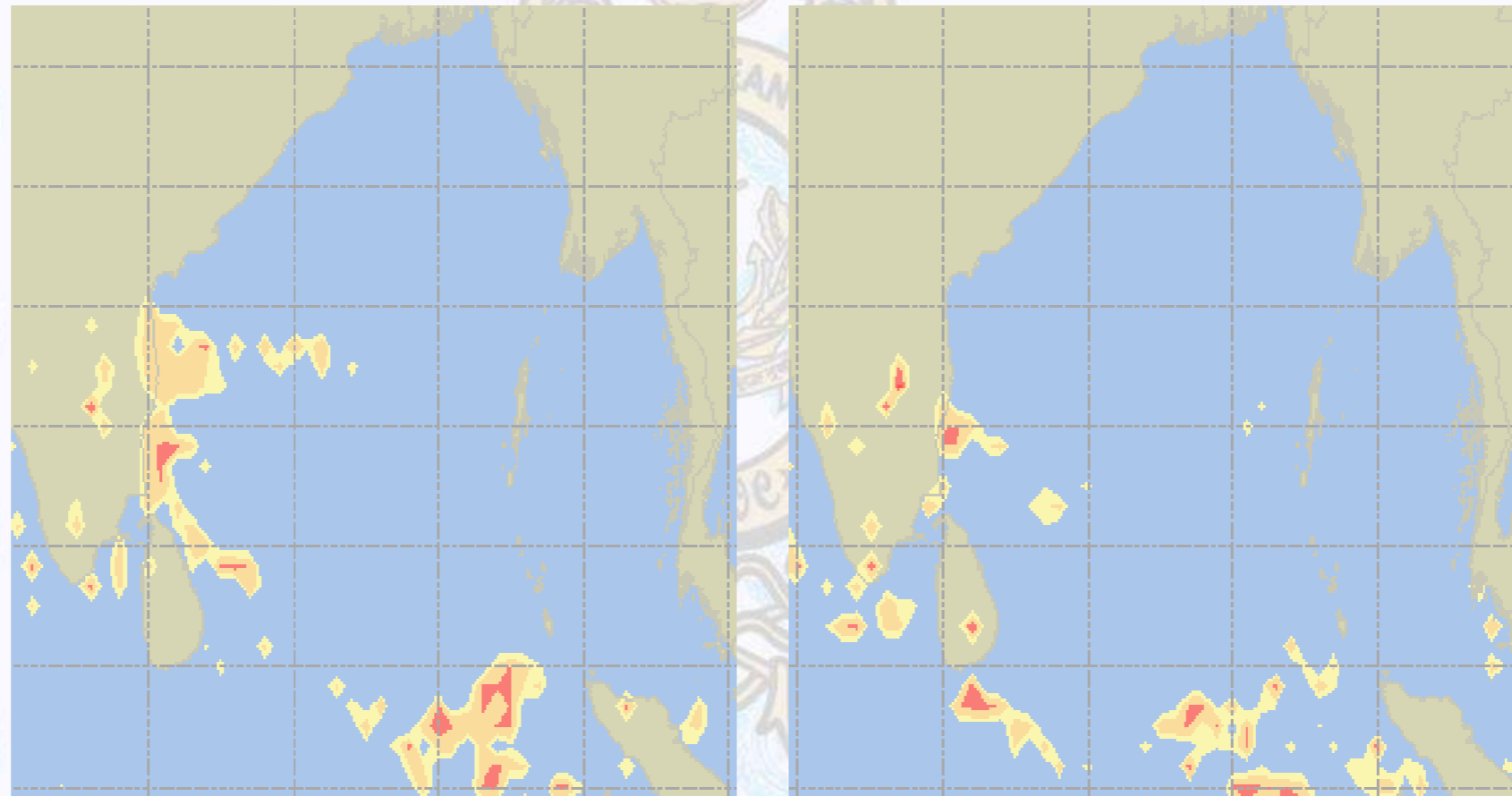




Visibility at Sea Forecast – 08 & 09 Dec 2020

08 Dec 20 Tuesday

09 Dec 20 Wednesday



Visibility Scale:



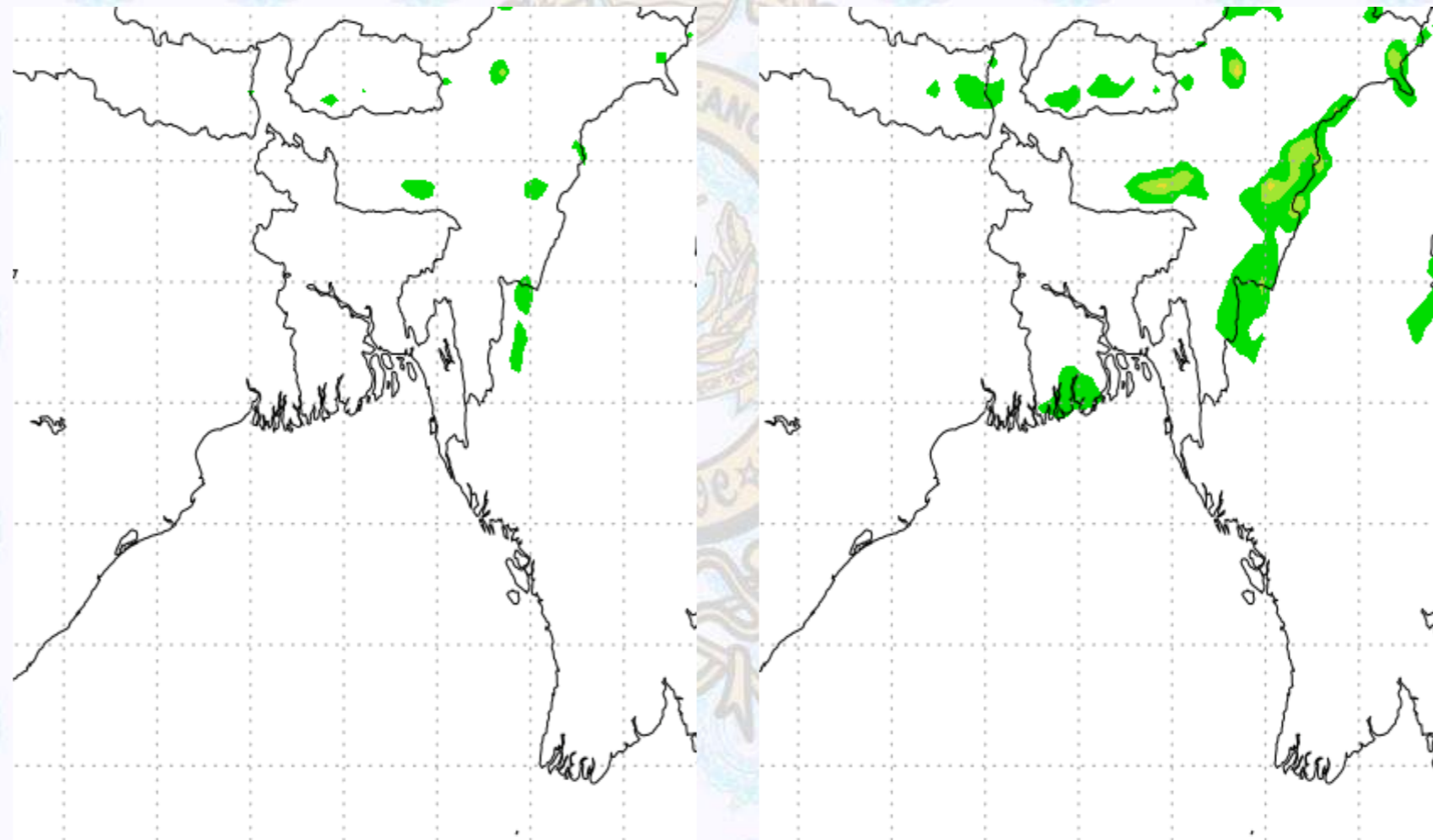
Ref (Slide 12-18): <http://www.weatheronline.co.uk/marine/weather?LEVEL>



Precipitation

Rain(mm) 08 &09 Dec2020

Rain(mm) 09 & 10 Dec2020



Precipitation Scale (mm):





Tidal Information

KHAL NO. 10

COX'S BAZAR

HIRAN POINT

	Time	Height		Time	Height		Time	Height
08 Dec 2020	0007	1.21		0351	2.77		0338	2.61
	0611	3.88		1027	0.96		1024	1.03
	1259	0.91		1633	2.57		1636	2.42
	1908	3.72		2300	1.07		2243	1.24
09 Dec 2020	Time	Height		Time	Height		Time	Height
	0129	1.25		0503	2.70		0449	2.54
	0729	3.80		1144	0.95		1133	0.98
	1414	0.85		1752	2.70		1755	2.53
	2025	3.90		-	-		-	-
10 Dec 2020	Time	Height		Time	Height		Time	Height
	0253	1.14		0022	1.02		0006	1.21
	0844	3.82		0617	2.73		0606	2.52
	1525	0.74		1257	0.87		1242	0.88
	2134	4.16		1903	2.93		1908	2.70