



WEATHER FORECAST FOR BN

29 NOV - 02 DEC 2020





WEATHER FORECAST – DHAKA

29.11.2020

Hourly	2 PM	4 PM	8 PM	11 PM
Temp. / Dew Point	29 / 17	28 / 17	24 / 17	22 / 17
Wind	11 km/h NW	10 km/h NW	5 km/h NW	4 km/h NW
Humidity	50%	50%	67%	72%
Chance of Precip	1%	1%	3%	4%
Cloud Cover	1%	1%	1%	1%
Conditions	Sunny	Sunny	Clear	Clear
Sunrise	06: 23 AM			
Sunset	17: 10 PM			

Conditions

Pressure : 1017 hpa

Visibility : 3.54 km

Ref: <https://www.wunderground.com/weather/bd/dhaka>



WEATHER FORECAST – CHATTOGRAM

29.11.2020

Hourly	2 PM	4 PM	8 PM	11 PM
Temp. / Dew Point	28 / 21	28 / 21	24 / 21	22 / 20
Wind	8 km/h WNW	10 km/h WNW	6 km/h NW	4 km/h N
Humidity	64%	66%	82%	85%
Chance of Precip.	1%	1%	5%	6%
Cloud Cover	1%	1%	1%	1%
Conditions	Sunny	Sunny	Clear	Clear
Sunrise	06: 14 AM			
Sunset	17: 07 PM			

Conditions

Pressure : 1016 hpa

Visibility : 4.83 Km

Ref: <https://www.wunderground.com/weather/bd/chittagong>



WEATHER FORECAST – KHULNA

29.11.2020

Hourly	2 PM	4 PM	8 PM	11 PM
Temp. / Dew Point	29 / 15	28 / 15	22 / 15	19 / 15
Wind	13 km/h NNW	11 km/h NNW	5 km/h NNW	4 km/h NW
Humidity	44%	44%	68%	77%
Chance of Precip.	1%	1%	3%	4%
Cloud Cover	5%	3%	1%	1%
Conditions	Sunny	Sunny	Clear	Clear
Sunrise Sunset	06: 24 AM 17: 15 PM			

Conditions

Pressure : 1017 hpa

Visibility : 14.48 Km

Ref: <https://www.wunderground.com/weather/bd/khulna>



GENERAL WEATHER FORECAST – DHAKA

Description	30 Nov 2020	01 Dec 2020	02 Dec 2020
Temperature (C)	29 °C/ 18 °C	29 °C/ 18 °C	29 °C/ 18 °C
Summary	Sunny	Sunny	Sunny
Sun Rise/Set	6h23m48s/17h10m36s	6h24m24s/17h10m48s	6h25m00s/17h10m54s
Day Length	10h47m18s	10h46m24s	10h45m54s
Moon Rise/ Set	5:13PM 6:05AM	5:57PM 7:00AM	6:46PM 7:55AM
Moon Phase/ illu	Full Moon, 99%	Full Moon, 99%	Waning Gibbous, 96%
Nautical Twilight	05:30, 18:02	05:31, 18:01	05:32, 18:03
Civil Twilight	05:58, 17:35	05:57, 17:36	06:00, 17:35
Humidity	D : 64% N : 79%	D : 64% N : 78%	D : 64% N : 79%
Barometer (mb)	1015	1016	1015
Visibility	Moderate	Moderate	Moderate
Precip Chance	10%	10%	10%
Wind (mph)	5 Km/h WNW	4 Km/h WNW	6 Km/h W

Ref: <https://weather.com/weather/5day//BGXX0003:1:BG>



GENERAL WEATHER FORECAST– CHATTOGRAM

Description	30 Nov 2020	01 Dec 2020	02 Dec 2020
Temperature (C)	29° C/ 19° C	29° C/ 18° C	29° C/ 17° C
Summary	Sunny	Sunny	Sunny
Sun Rise/Set	6h15m12s/17h07m48s	6h15m42s/17h08m00s	6h16m18s/17h08m12s
Day Length	10h52m36s	10h52m18s	10h51m54s
Moon Rise/ Set	5:13PM 6:05AM	5:54PM 6:51AM	6:43PM 7:45AM
Moon Phase/ illu	Full Moon, 99%	Full Moon, 99%	Waning Gibbous, 96%
Nautical Twilight	05:22 17:59	05:23 17:58	05:24 17:59
Civil Twilight	05:50, 17:31	05:49, 17:32	05:52, 17:32
Humidity	D : 74% N : 91%	D : 74% N : 91%	D : 72% N : 89%
Barometer (mb)	1015	1015	1015
Visibility	Moderate	Moderate	Moderate
Precip Chance	10%	10%	10%
Wind (mph)	7 Km/h NW	7 Km/h NW	6 Km/h NW

Ref: <https://weather.com/weather/5day//BGXX0002:1:BG>



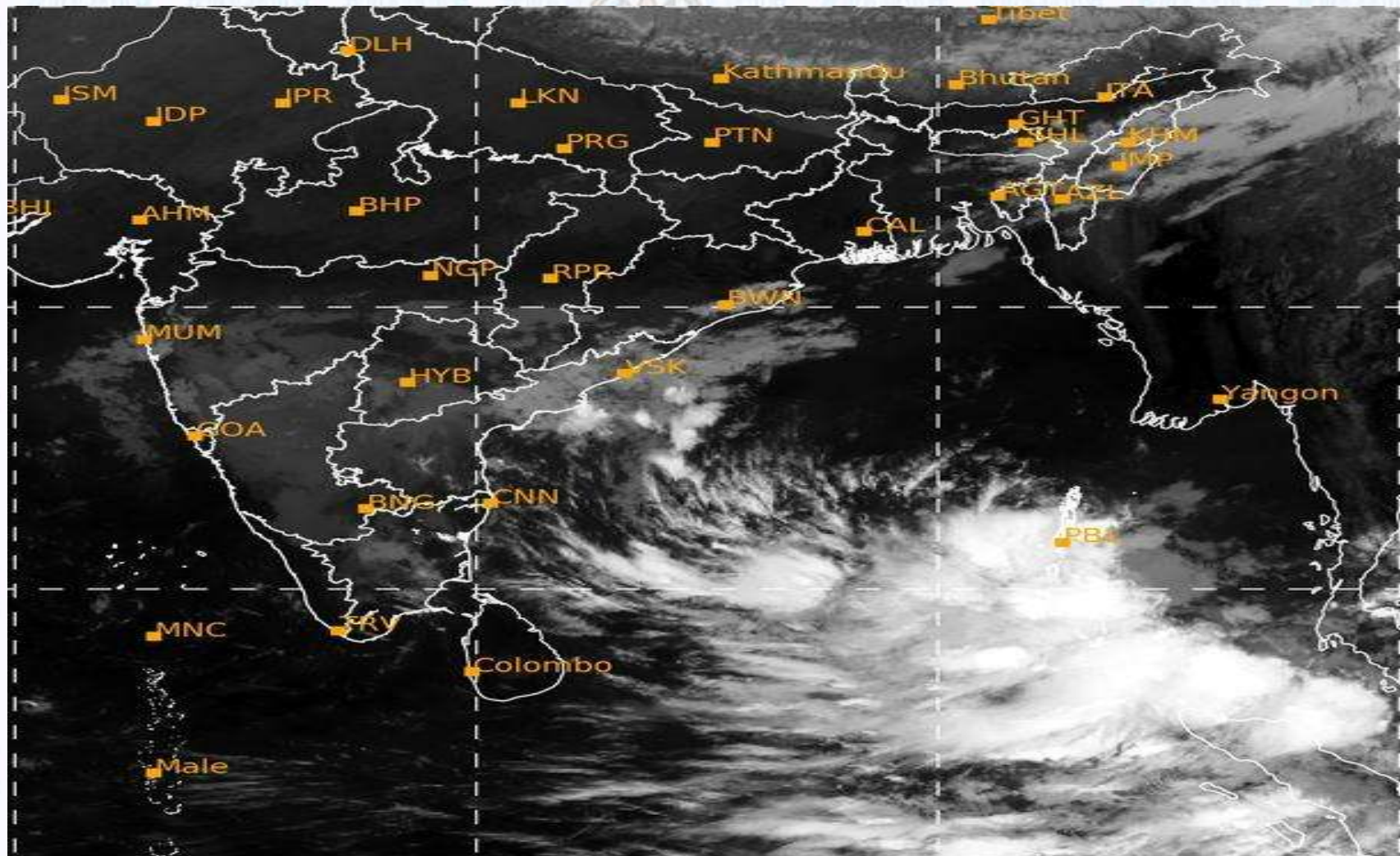
GENERAL WEATHER FORECAST – KHULNA

Description	30 Nov 2020	01 Dec 2020	02 Dec 2020
Temperature(C)	29°C/ 16°C	29°C/ 17°C	29°C/ 17°C
Summary	Sunny	Sunny	Sunny
Sun Rise/Set	6h25m18s/17h15m54s	6h25m54s/17h16m12s	6h26m24s/17h16m18s
Day Length	10h50m36s	10h50m18s	10h59m54s
Moon Rise/Set	5:13PM 6:05AM	6:05PM 7:01AM	6:51PM 7:56AM
Moon Phase/illu	Full Moon, 99%	Full Moon, 99%	Waning Gibbous, 96%
Nautical Twilight	05:32, 18:07	05:33, 18:06	05:34, 18:08
Civil Twilight	06:00, 17:40	05:59, 17:42	06:02, 17:40
Humidity	D : 60% N : 78%	D : 63% N : 78%	D : 62% N : 77%
Barometer (mb)	1015	1015	1015
Visibility	Moderate	Moderate	Moderate
Precip Chance	10%	10%	10%
Wind (mph)	10 km/h NW	6 km/h NW	08 km/h WNW

Ref: <https://weather.com/weather/5day//BGXX0005:1:BG>



SATELLITE VIEW OF BAY OF BENGAL

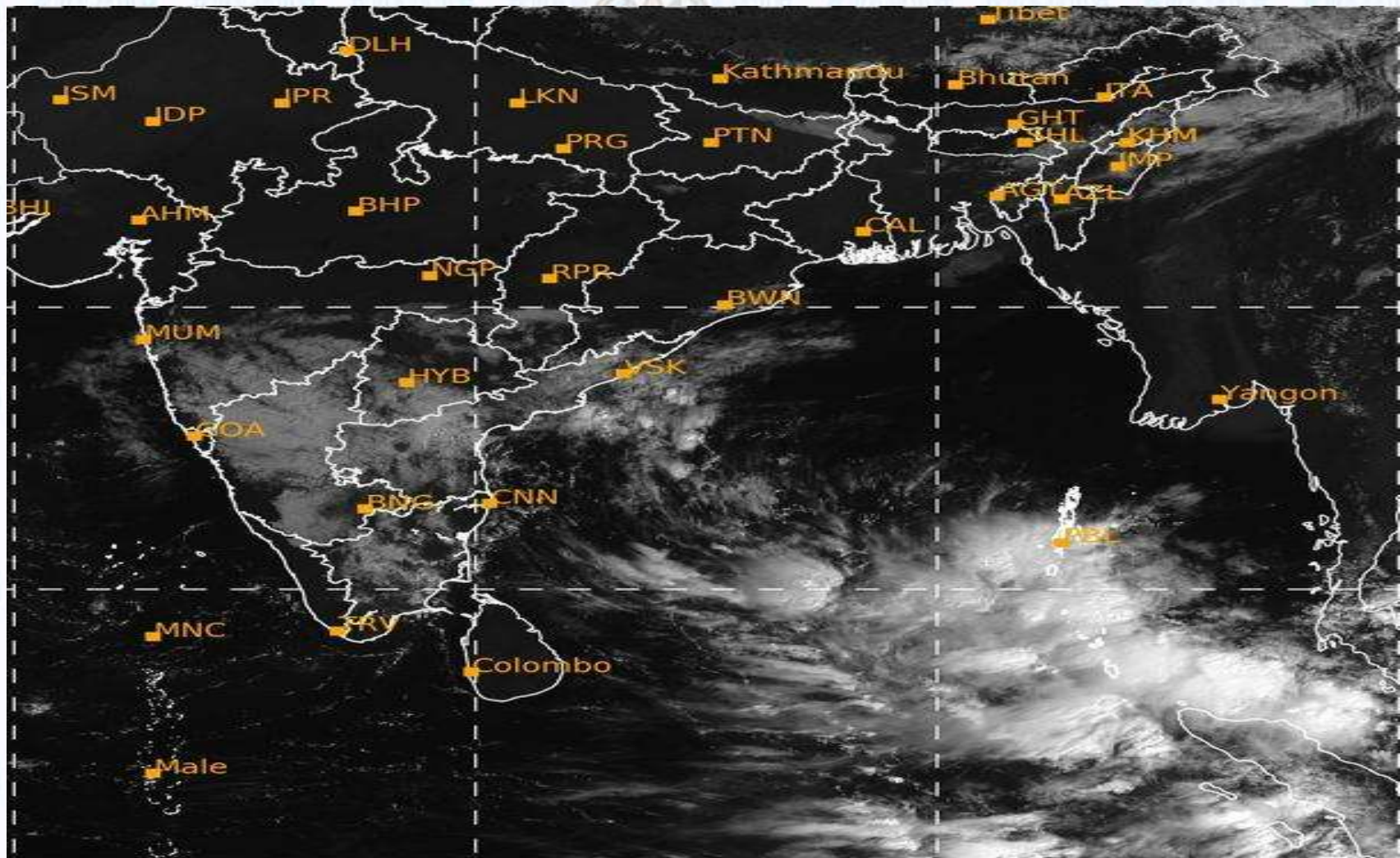


29/11/2020, 11:00 UTC MATSAT-IR

Ref: <http://satellite.imd.gov.in/insat.htm>



SATELLITE VIEW OF BAY OF BENGAL



29/11/2020, 11:00 MATSAT-VIS

Ref: <http://satellite.imd.gov.in/insat.htm>



Fleet Forecast Sea Area C-90 (Valid for 12 Hrs Commencing 1000 UTC of 29.11.2020)

Part One	NO STORM WARNING.	
Part Two	A LOW PRESSURE AREA HAS FORMED OVER SOUTH ANDAMAN SEA AND ADJOINING AREAS OF SOUTHEAST BAY. IT IS LIKELY TO INTENSIFY FURTHER.	
Part Three	Weather	TEMPORARY PARTLY CLOUDY OVER AREA C-90.
	Wind	NORTH /NORTH-EASTERLY 08-12 KTS.
	Visibility	03-05 KMS, REDUCING TO 1500 M OR LESS IN MIST/HAZE.
	Outlook	FOR SUBSEQUENT 12 HOURS: LITTLE CHANGE.
	MSL Pressure	AT = 29,0000 UTC. CHATTOGRAM =1016 HPA



Inland River Port Warning (VALID TILL 06 PM OF 29.11.2020)

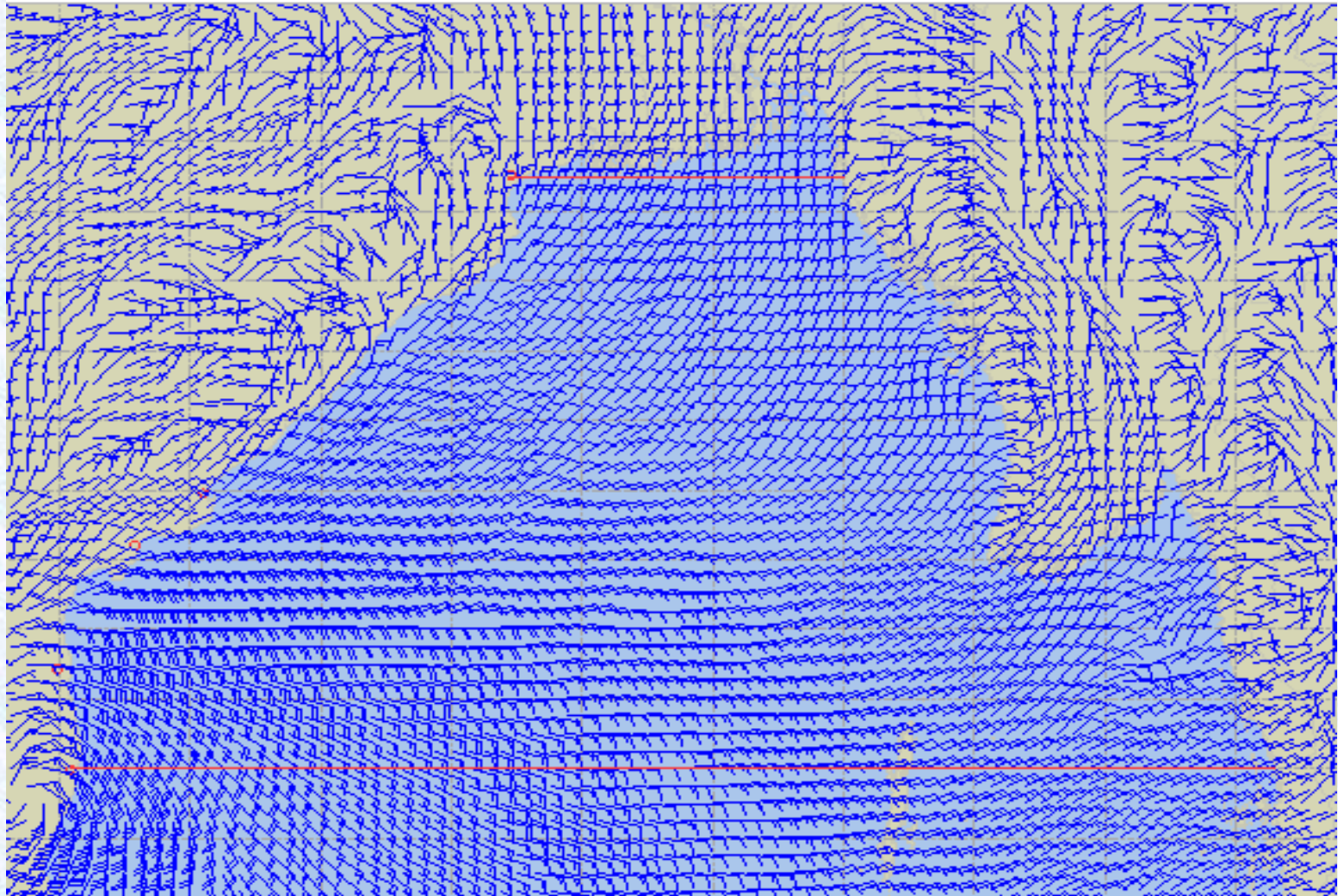
THERE IS NO INLAND RIVERPORT WARNING & NO SIGNAL IS TO BE HOISTED.



Ref: <http://www.bmd.gov.bd/?/home>



Surface Wind Forecast- 30 Nov - 2020



Legend:



**Calm
Winds**



5 Knots



10 Knots



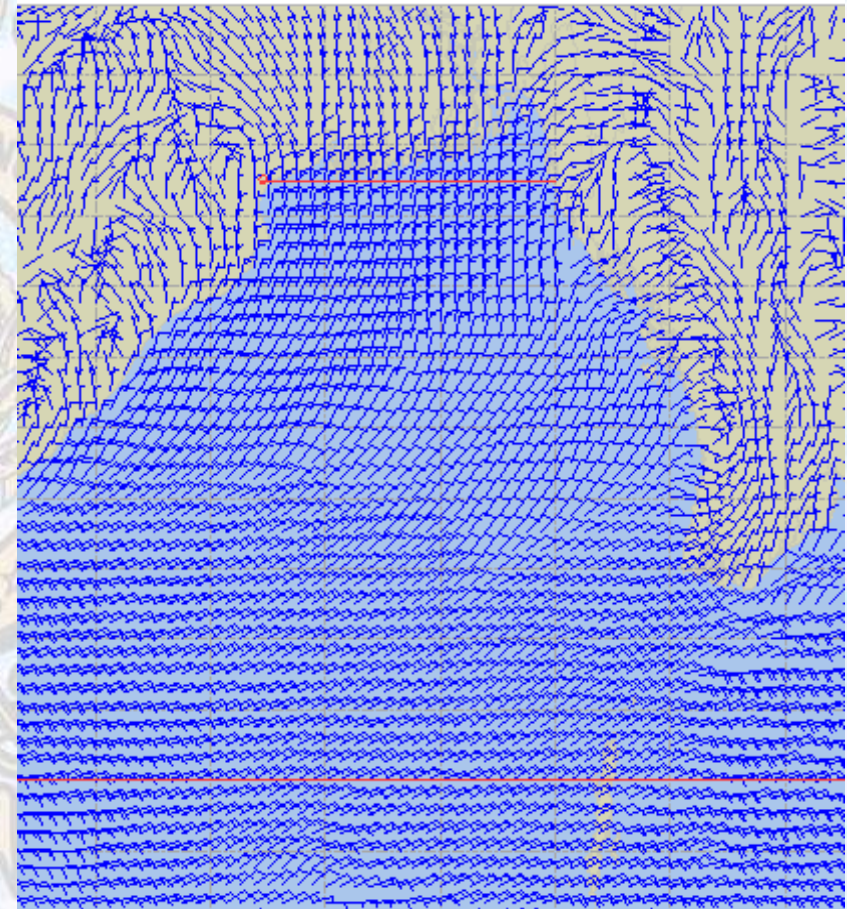
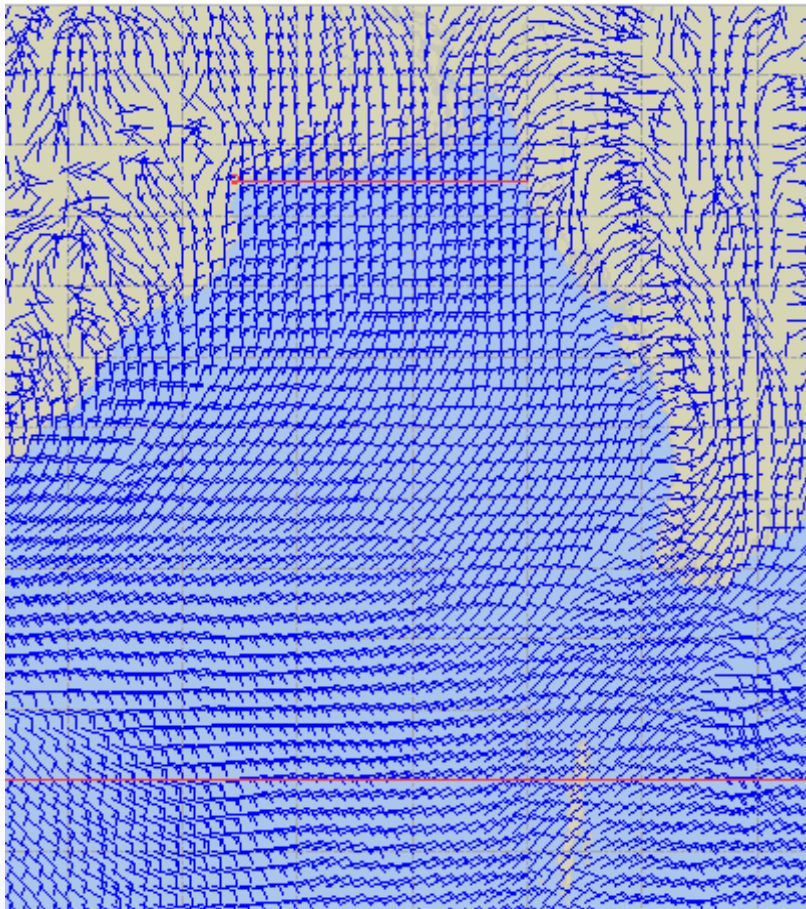
60 Knots



Surface Wind Forecast – 01 & 02 Dec - 2020

01 Dec 20 Tuesday

02 Dec 20 Wednesday



Legend:



**Calm
Winds**



5 Knots



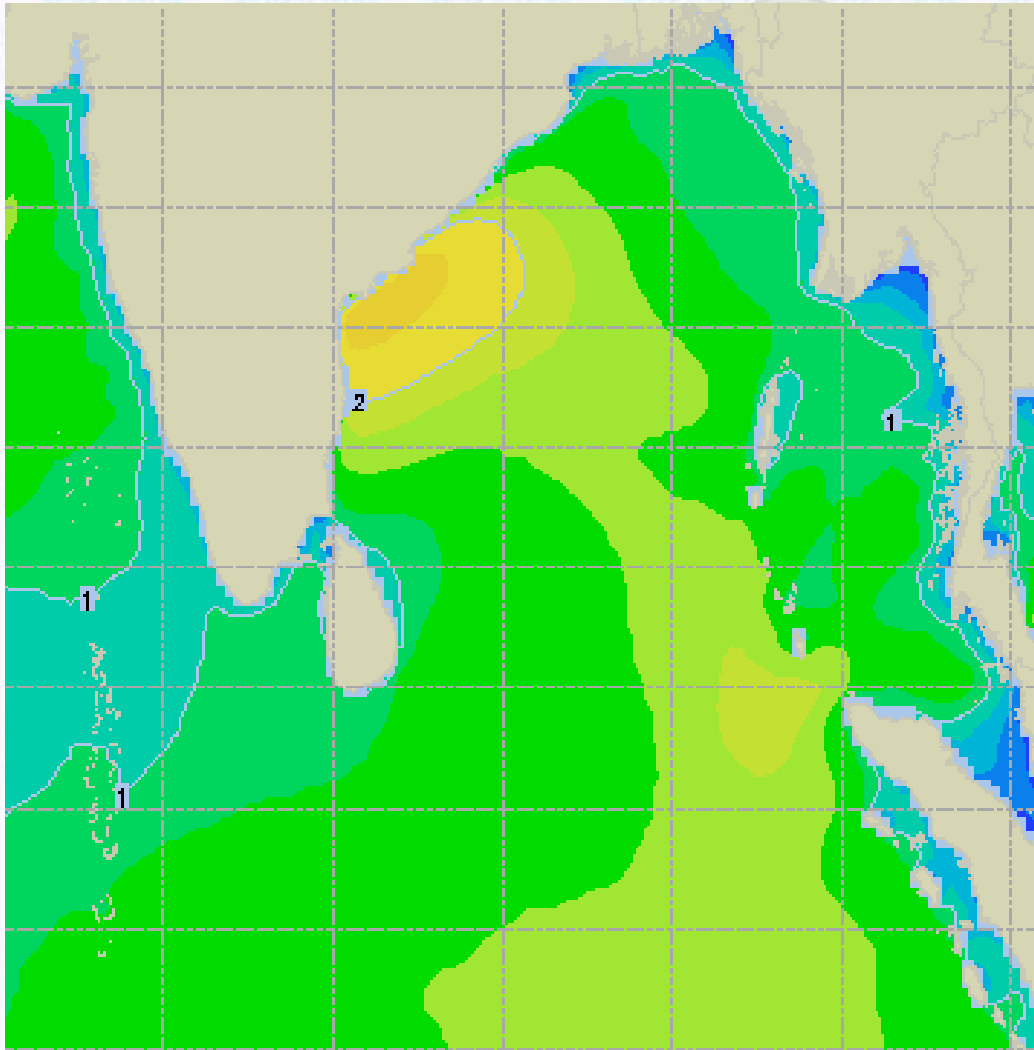
10 Knots



60 Knots



Sea State Forecast – 30 Nov- 2020



Sea State	Ht (m)
0	0-0.1
1	0-0.1
2	0.1-0.5
3	0.5-1.25
4	1.25-2.5
5	2.5-4.0
6	4-6
7	6-9
8	9-14
9	Over 14

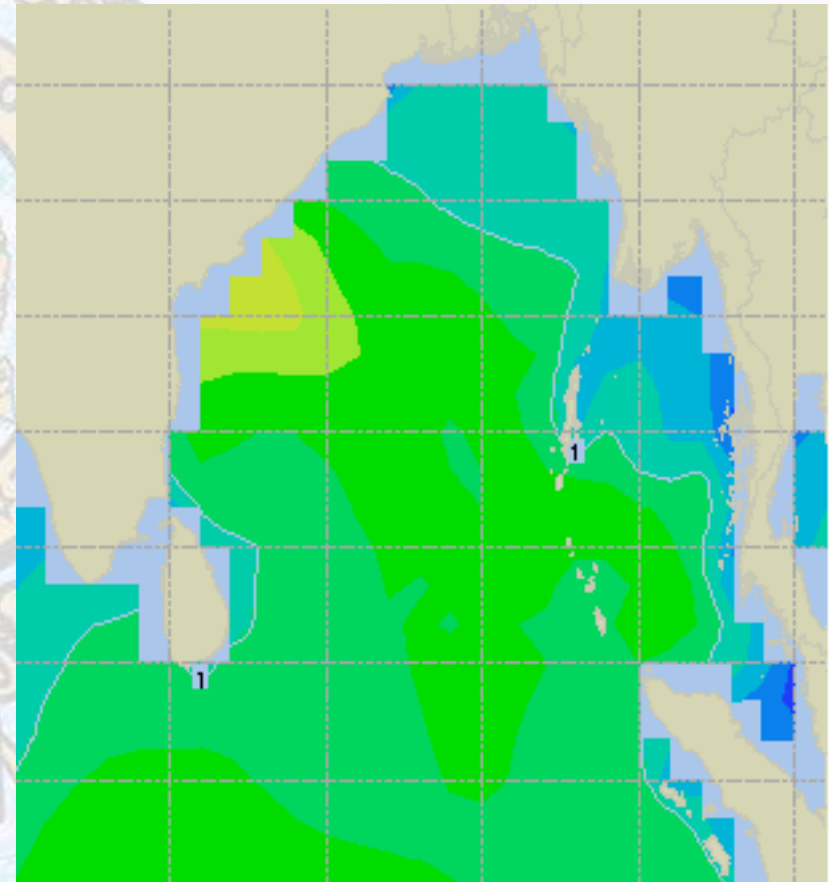
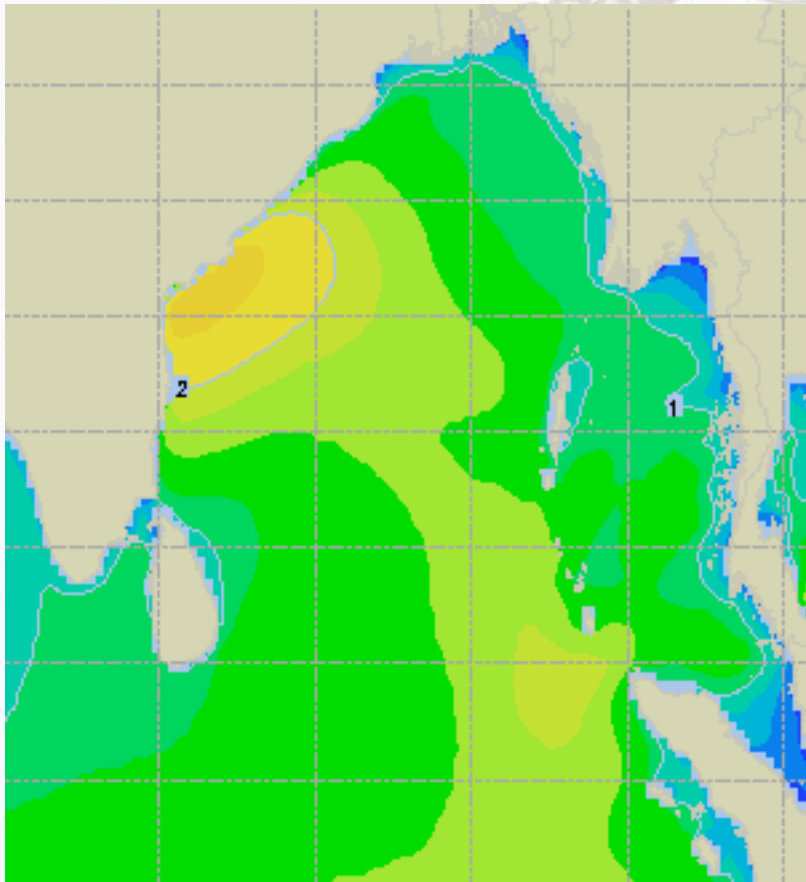




Sea State Forecast – 01 & 02 Dec- 2020

01 Dec 20 Tuesday

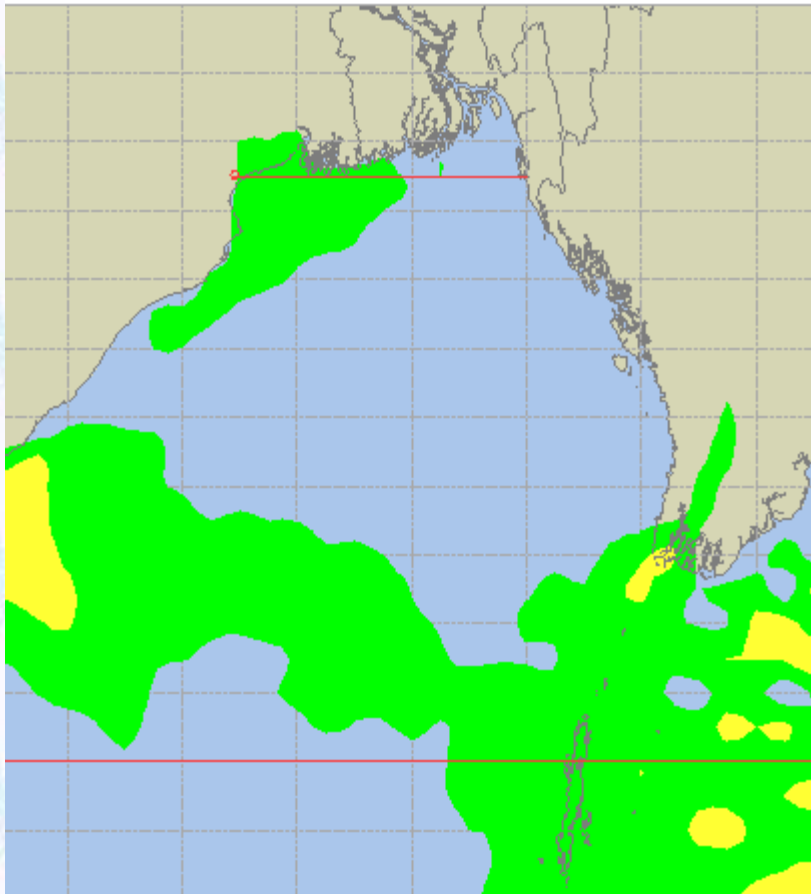
02 Dec 20 Wednesday



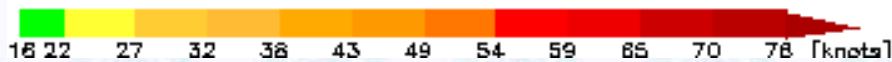
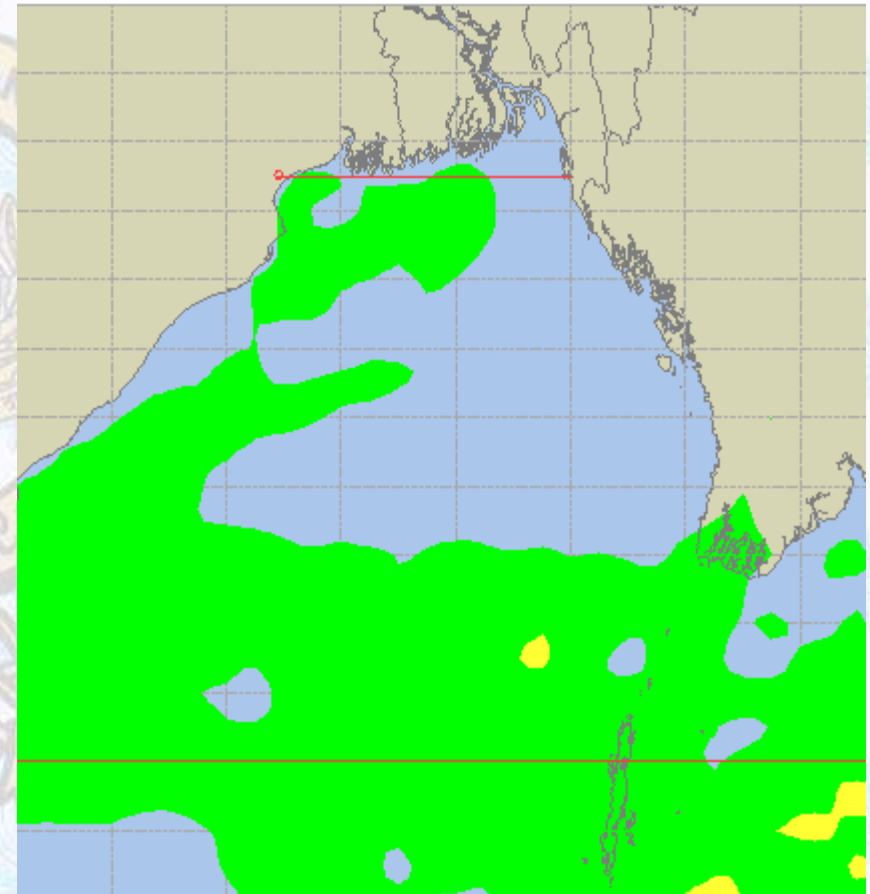


Peak Gusting Possibilities— 30 Nov & 01 Dec 2020

30 Nov 20 Monday



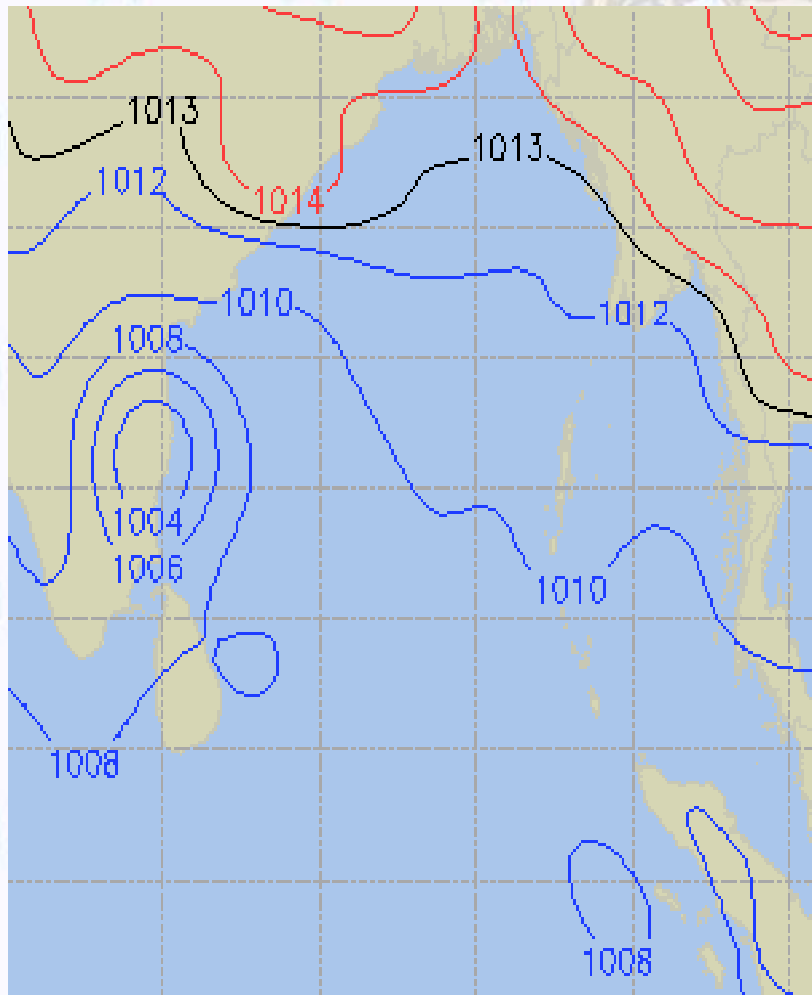
01 Dec 20 Tuesday



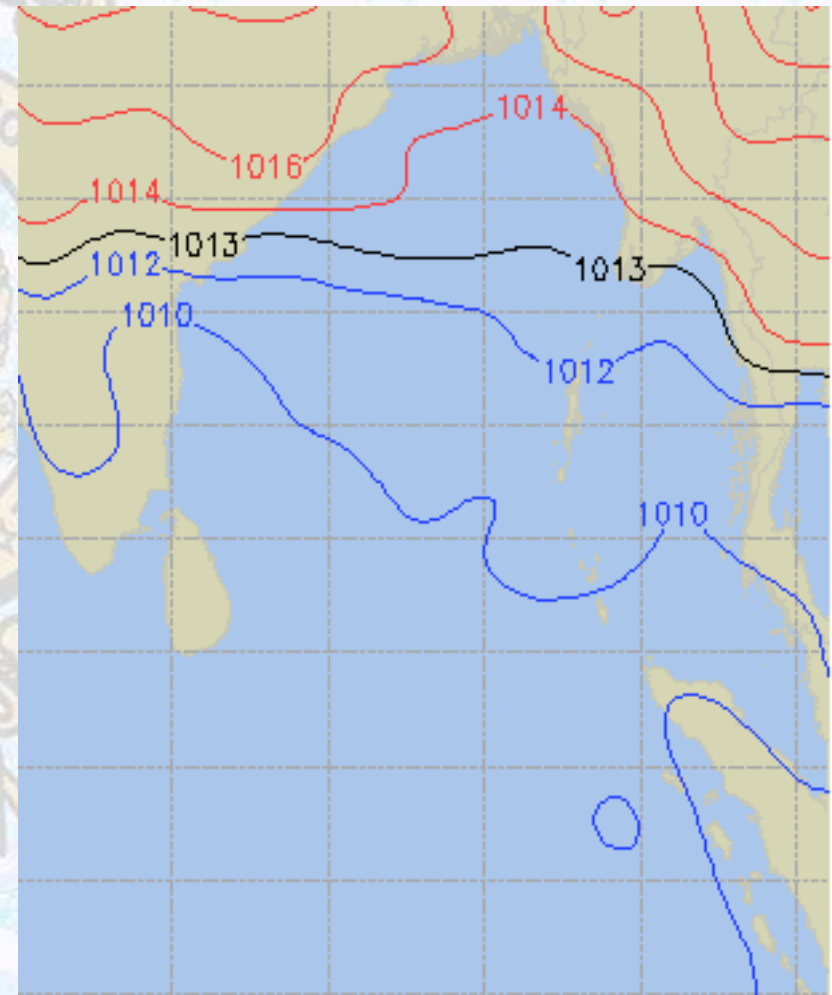


Surface Pressure forecast– 30 Nov & 01 Dec 2020

30 Nov 20 Monday



01 Dec 20 Tuesday

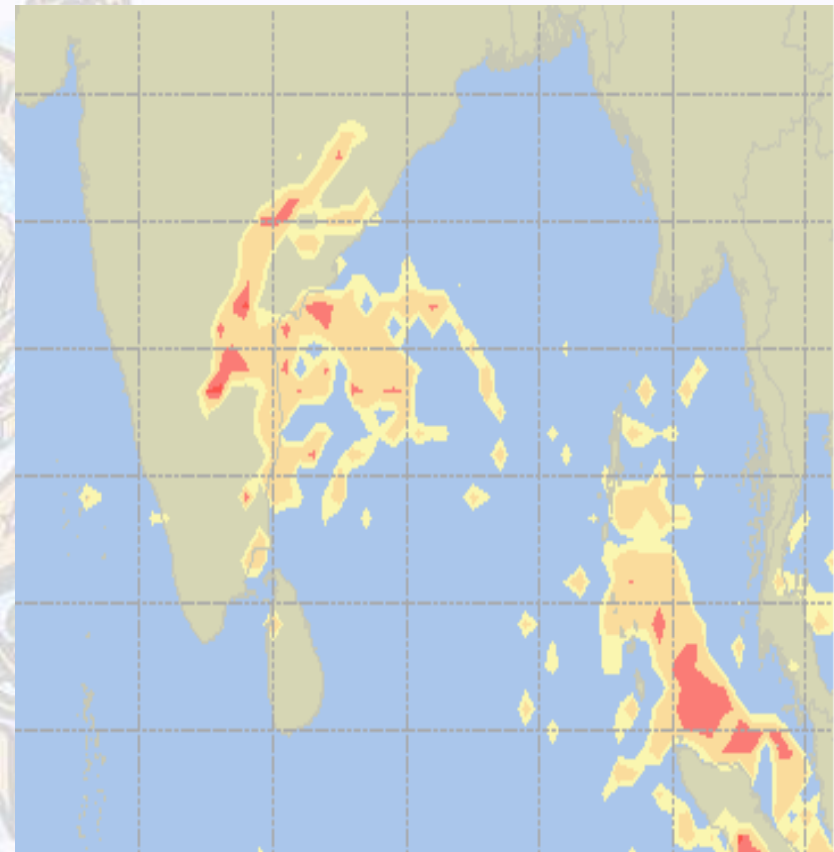
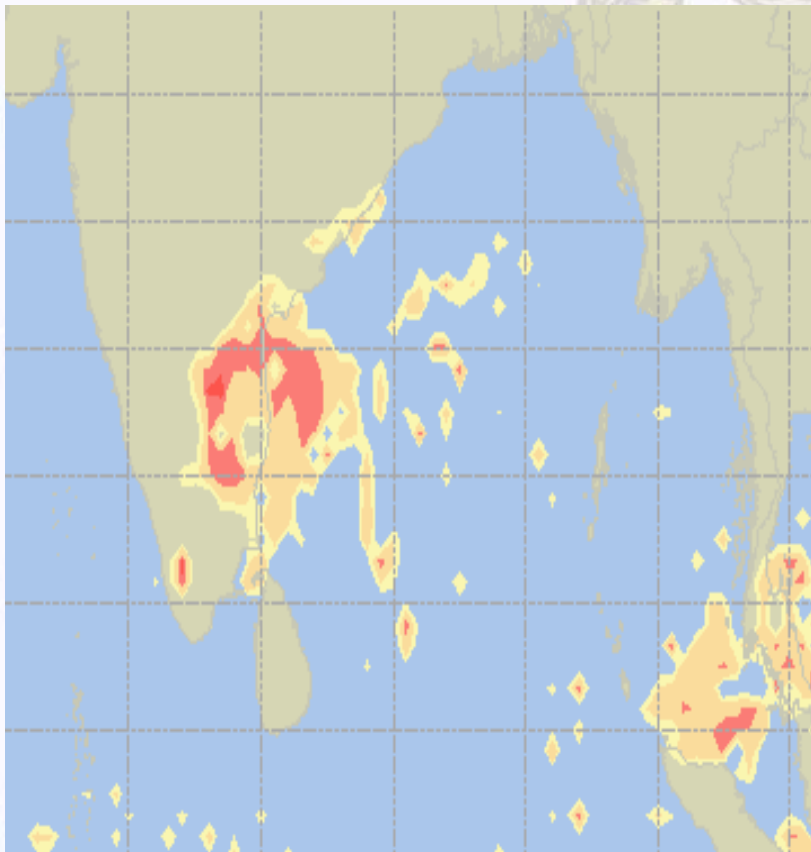




Visibility at Sea Forecast – 30 Nov & 01 Dec 2020

30 Nov 20 Monday

01 Dec 20 Tuesday



Visibility Scale:

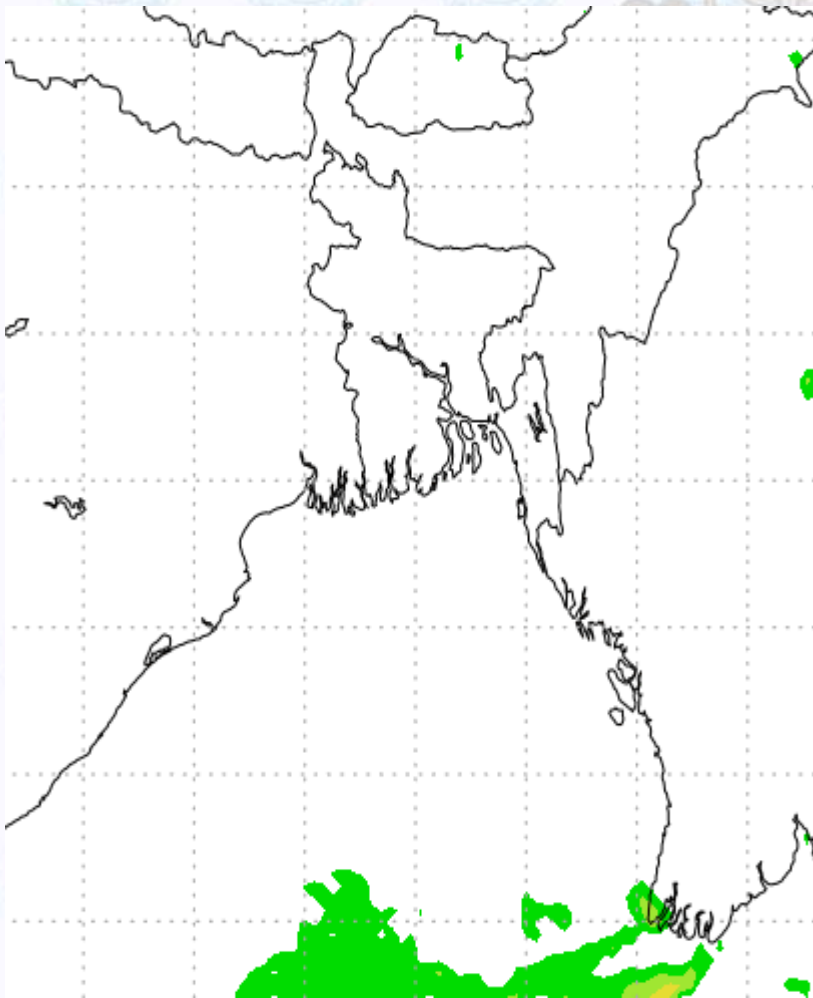


Ref (Slide 12-18): <http://www.weatheronline.co.uk/marine/weather?LEVEL>

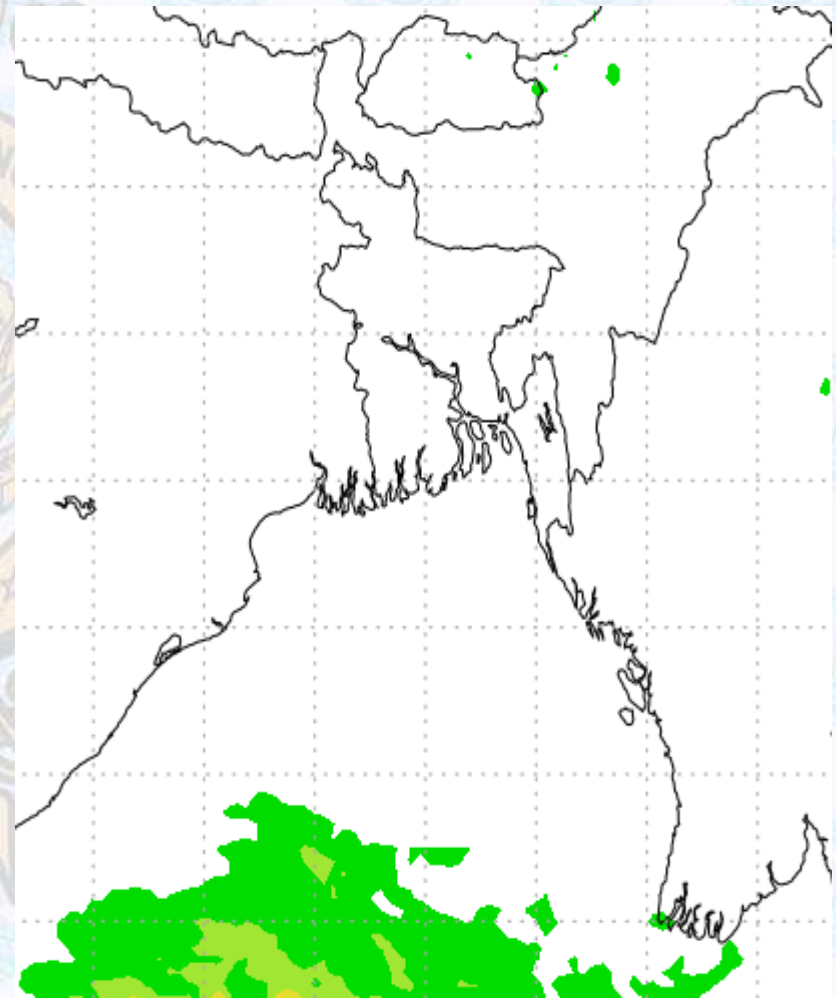


Precipitation

Rain(mm)30 Nov &01 Dec2020



Rain(mm)01 &02 Dec2020



Precipitation Scale (mm):





Tidal Information

KHAL NO. 10

COX'S BAZAR

HIRAN POINT

	Time	Height		Time	Height		Time	Height
30 Nov 2020	0042	4.58		0503	0.69		0444	0.85
	0716	0.58		1036	2.99		1034	2.64
	1259	4.13		1708	0.63		1638	0.70
	1914	0.55		2256	3.43		2250	2.99
01 Dec 2020	0107	4.58		0536	0.65		0516	0.83
	0745	0.59		1108	2.99		1106	2.64
	1327	4.12		1741	0.61		1710	0.68
	1943	0.54		2330	3.42		2320	2.98
02 Dec 2020	0134	4.56		0608	0.64		0549	0.84
	0815	0.62		1141	2.96		1137	2.62
	1355	4.09		1813	0.62		1742	0.70
	2013	0.56		-	-		2352	2.94