



WEATHER FORECAST FOR BN

27 - 30 NOV 2020





WEATHER FORECAST – DHAKA

27.11.2020

Hourly	2 PM	4 PM	8 PM	11 PM
Temp. / Dew Point	28 / 17	27 / 17	25 / 18	23 / 19
Wind	10 km/h NNW	11 km/h NNW	3 km/h NW	5 km/h NW
Humidity	49%	54%	68%	71%
Chance of Precip	1%	1%	3%	4%
Cloud Cover	86%	83%	68%	76%
Conditions	Cloudy	Cloudy	Cloudy	Cloudy
Sunrise Sunset	06: 21 AM 17: 10 PM			

Conditions

Pressure : 1016 hpa

Visibility : 8.25 km

Ref: <https://www.wunderground.com/weather/bd/dhaka>



WEATHER FORECAST – CHATTOGRAM

27.11.2020

Hourly	2 PM	4 PM	8 PM	11 PM
Temp. / Dew Point	28 / 19	28 / 20	24 / 20	22 / 19
Wind	7 km/h NW	7 km/h NW	7 km/h NNW	4 km/h NNE
Humidity	60%	62%	83%	87%
Chance of Precip.	1%	1%	5%	6%
Cloud Cover	42%	71%	15%	16%
Conditions	Partly Cloudy	Partly Cloudy	Clear	Clear
Sunrise	06: 13 AM			
Sunset	17: 07 PM			

Conditions

Pressure : 1015 hpa

Visibility : 4.02 Km

Ref: <https://www.wunderground.com/weather/bd/chittagong>



WEATHER FORECAST – KHULNA

27.11.2020

Hourly	2 PM	4 PM	8 PM	11 PM
Temp. / Dew Point	29 / 16	27 / 17	23 / 17	22 / 18
Wind	11 km/h NNW	11 km/h NNW	5 km/h NNW	6 km/h NW
Humidity	50%	56%	72%	78%
Chance of Precip.	1%	1%	3%	4%
Cloud Cover	71%	70%	74%	81%
Conditions	Mostly Cloudy	Mostly Cloudy	Mostly Cloudy	Mostly Cloudy
Sunrise Sunset	06: 22 AM 17: 15 PM			

Conditions

Pressure : 1016 hpa

Visibility : 08.05 Km

Ref: <https://www.wunderground.com/weather/bd/khulna>



GENERAL WEATHER FORECAST – DHAKA

Description	28 Nov 2020	29 Nov 2020	30 Nov 2020
Temperature (C)	30 °C / 18 °C	30 °C / 18 °C	29 °C / 18 °C
Summary	Sunny	Sunny	Sunny
Sun Rise/Set	6h22m36s/17h10m18s	6h23m12s/17h10m30s	6h23m48s/17h10m36s
Day Length	10h47m42s	10h47m18s	10h47m18s
Moon Rise/ Set	3:53PM 4:13AM	4:33PM 5:12AM	5:13PM 6:05AM
Moon Phase/ illu	Waxing Gibbous, 95%	Waxing Gibbous, 98%	Full Moon, 99%
Nautical Twilight	05:29, 18:02	05:30, 18:02	05:30, 18:02
Civil Twilight	05:57, 17:35	05:58, 17:35	05:58, 17:35
Humidity	D : 60% N : 73%	D : 60% N : 76%	D : 63% N : 77%
Barometer (mb)	1015	1015	1015
Visibility	Moderate	Moderate	Moderate
Precip Chance	10%	10%	10%
Wind (mph)	8 Km/h NNW	8 Km/h NNW	6 Km/h WNW

Ref: <https://weather.com/weather/5day//BGXX0003:1:BG>



GENERAL WEATHER FORECAST – CHATTOGRAM

Description	28 Nov 2020	29 Nov 2020	30 Nov 2020
Temperature (C)	29° C/ 18° C	30° C/ 18° C	30° C/ 18° C
Summary	Partly Cloudy	Sunny	Sunny
Sun Rise/Set	6h14m00s/17h07m24s	6h14m36s/17h07m36s	6h15m12s/17h07m48s
Day Length	10h53m24s	10h53m00s	10h52m36s
Moon Rise/ Set	3:53PM 4:13AM	4:30PM 5:04AM	5:13PM 6:05AM
Moon Phase/ illu	Waxing Gibbous, 95%	Waxing Gibbous, 98%	Full Moon, 99%
Nautical Twilight	05:21 17:59	05:22 17:59	05:22 17:59
Civil Twilight	05:49, 17:31	05:50, 17:31	05:50, 17:31
Humidity	D : 73% N : 90%	D : 73% N : 89%	D : 73% N : 89%
Barometer (mb)	1016	1015	1015
Visibility	Moderate	Moderate	Moderate
Precip Chance	10%	10%	10%
Wind (mph)	6 Km/h NNW	7 Km/h NNW	6 Km/h NNW

Ref: <https://weather.com/weather/5day//BGXX0002:1:BG>



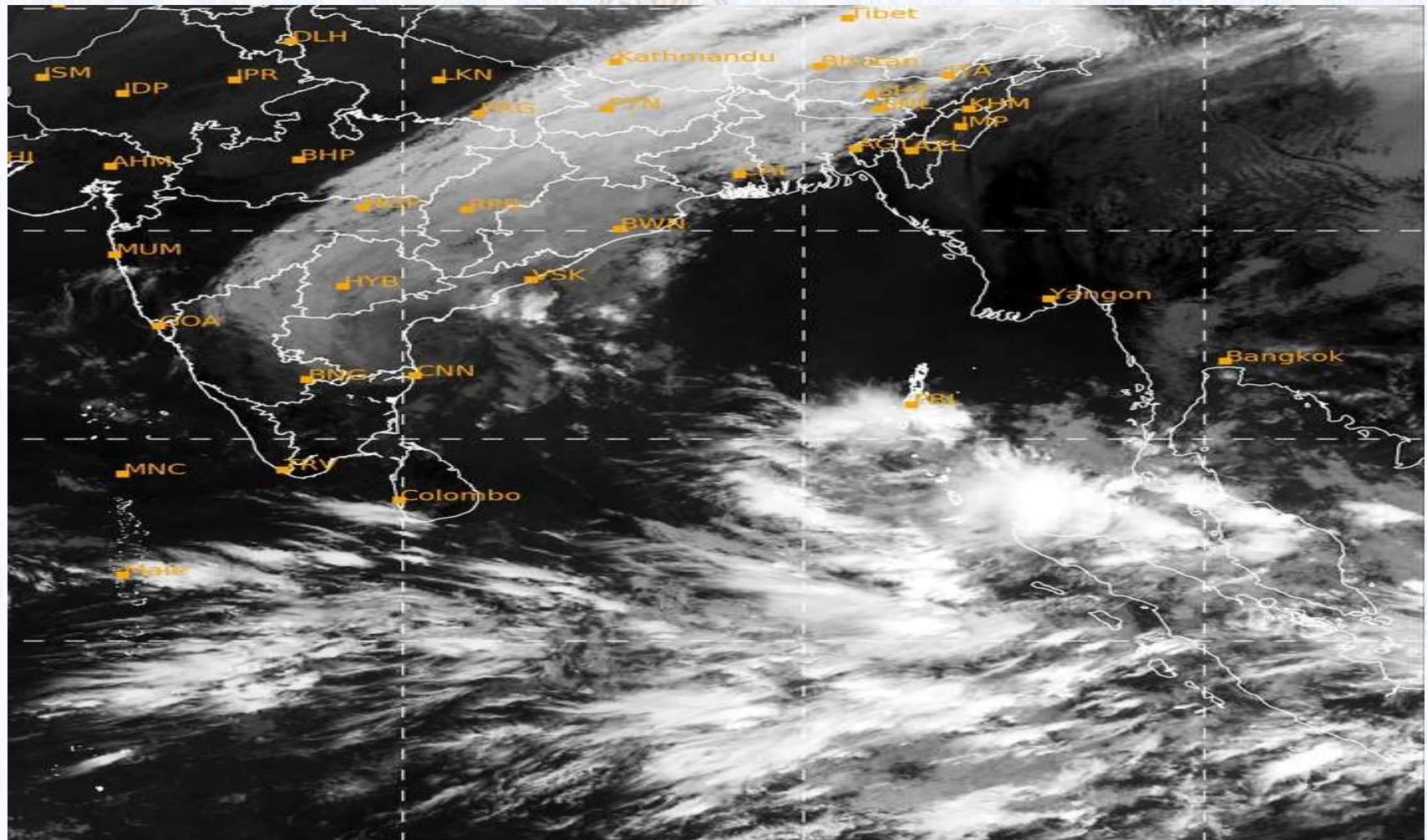
GENERAL WEATHER FORECAST – KHULNA

Description	28 Nov 2020	29 Nov 2020	30 Nov 2020
Temperature(C)	29°C/ 17°C	30°C/ 17°C	29°C/ 17°C
Summary	Sunny	Sunny	Sunny
Sun Rise/Set	6h24m12s/17h15m36s	6h24m42s/17h15m48s	6h25m18s/17h15m54s
Day Length	10h51m24s	10h51m06s	10h50m36s
Moon Rise/Set	3:53PM 4:13AM	4:38PM 5:14AM	5:13PM 6:05AM
Moon Phase/illu	Waxing Gibbous, 95%	Waxing Gibbous, 95%	Full Moon, 99%
Nautical Twilight	05:31, 18:07	05:32, 18:07	05:32, 18:07
Civil Twilight	05:59, 17:40	06:00, 17:40	06:00, 17:40
Humidity	D : 58% N : 73%	D : 59% N : 76%	D : 59% N : 76%
Barometer (mb)	1015	1015	1015
Visibility	Moderate	Moderate	Moderate
Precip Chance	0%	10%	10%
Wind (mph)	12 km/h NNW	12 km/h NNW	9 km/h NW

Ref: <https://weather.com/weather/5day//BGXX0005:1:BG>



SATELLITE VIEW OF BAY OF BENGAL

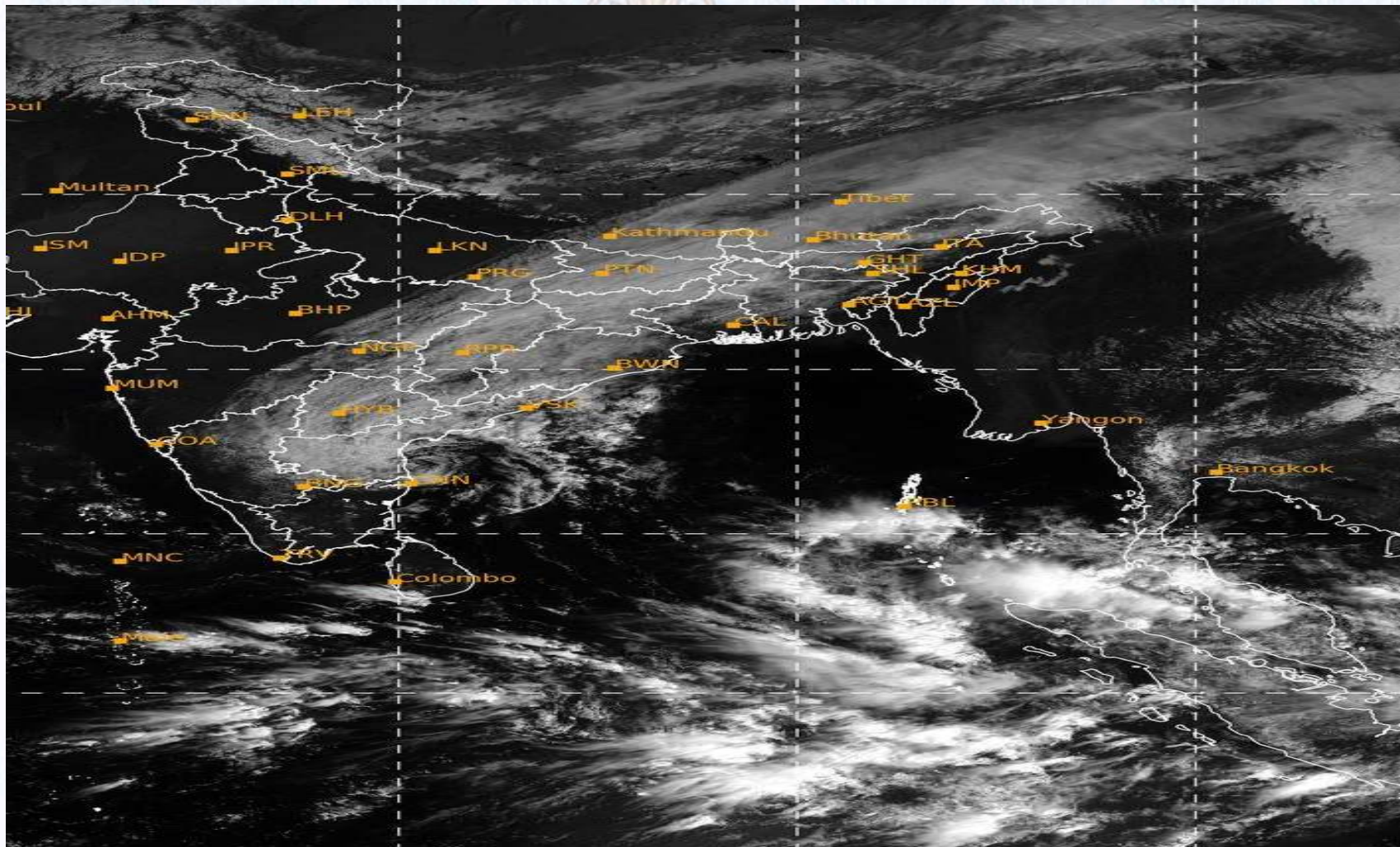


27/11/2020, 11:00 UTC MATSAT-IR

Ref: <http://satellite.imd.gov.in/insat.htm>



SATELLITE VIEW OF BAY OF BENGAL



27/11/2020, 11:00 MATSAT-VIS

Ref: <http://satellite.imd.gov.in/insat.htm>



Fleet Forecast Sea Area C-90 (Valid for 12 Hrs Commencing 1000 UTC of 27.11.2020)

Part One	NO STORM WARNING.	
Part Two	TROUGH OF LOW LIES OVER NORTH BAY.	
Part Three	Weather	TEMPORARY RAIN/THUNDER SHOWERS OVER AREA C-90.
	Wind	NORTH/NORTH-EASTERLY, 08-12 KTS .
	Visibility	03-05 KMS, REDUCING TO 1500 M OR LESS IN MIST/HAZE.
	Outlook	FOR SUBSEQUENT 12 HOURS: LITTLE CHANGE.
	MSL Pressure	AT = 27,0000 UTC. CHATTOGRAM =1015 HPA



Inland River Port Warning (VALID TILL 06 PM OF 27.11.2020)

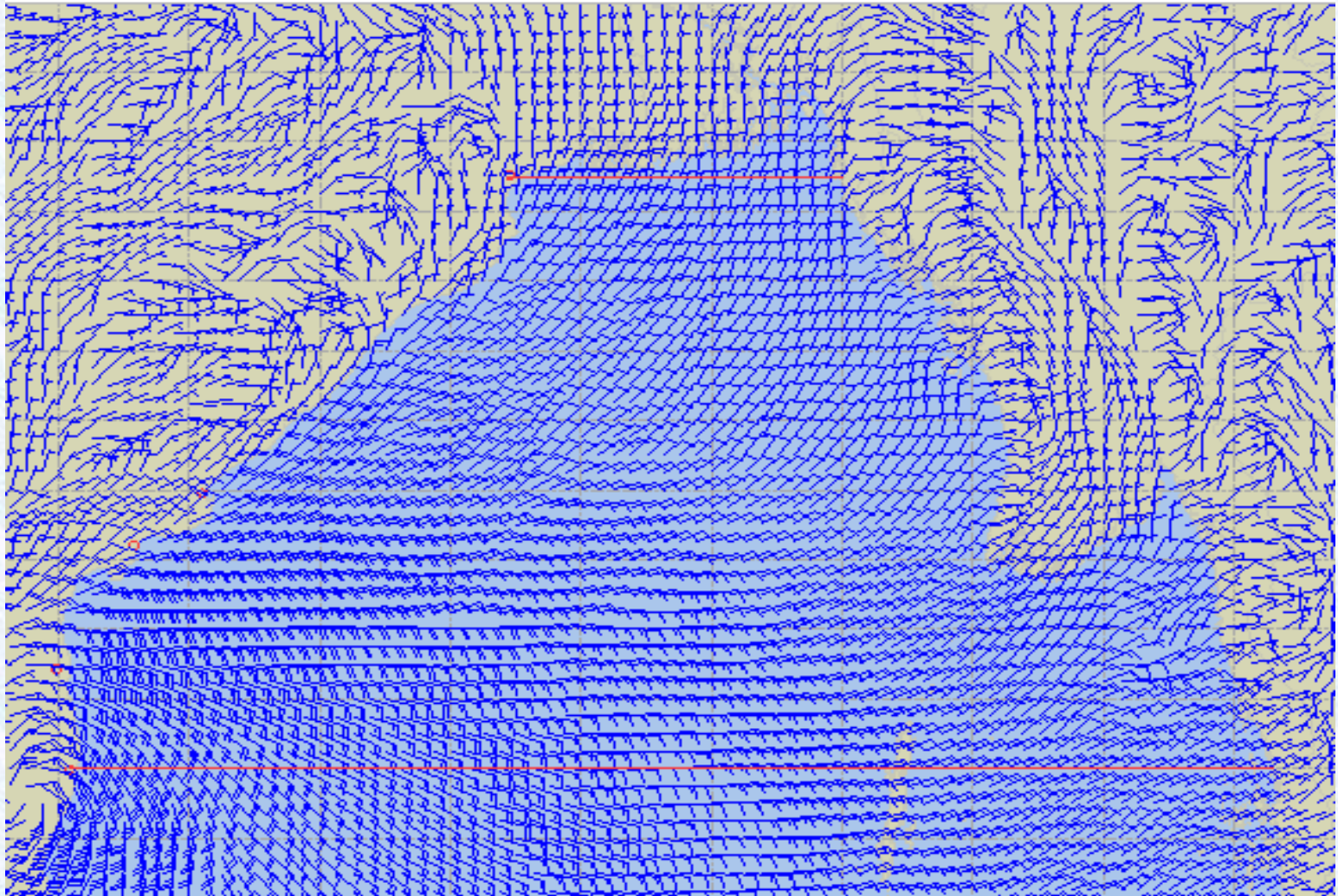
THERE IS NO INLAND RIVERPORT WARNING & NO SIGNAL IS TO BE HOISTED.



Ref: <http://www.bmd.gov.bd/?/home>



Surface Wind Forecast- 28 Nov - 2020



Legend:



**Calm
Winds**



5 Knots



10 Knots



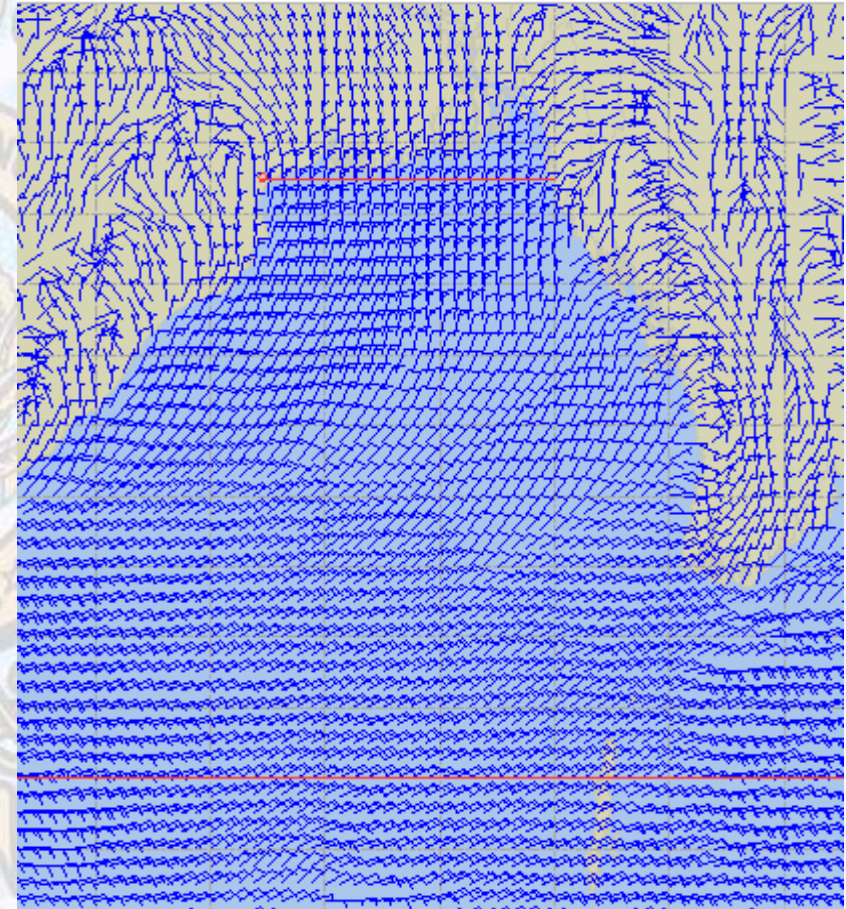
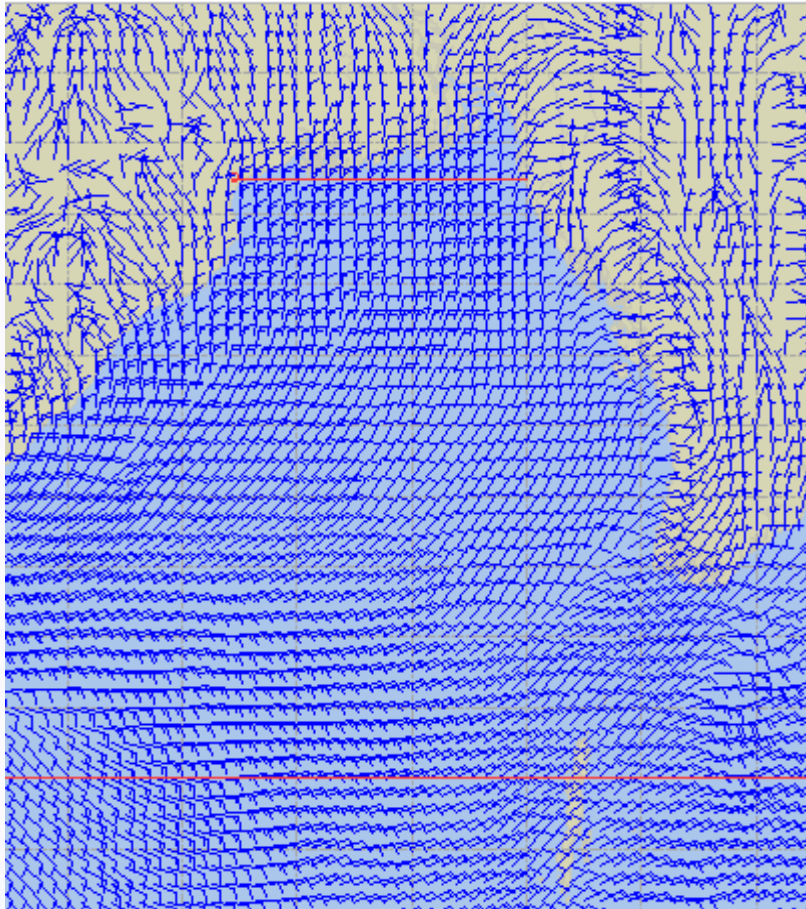
60 Knots



Surface Wind Forecast – 29 & 30 Nov- 2020

29 Nov 20 Saturday

30 Nov 20 Sunday



Legend:



Calm
Winds



5 Knots



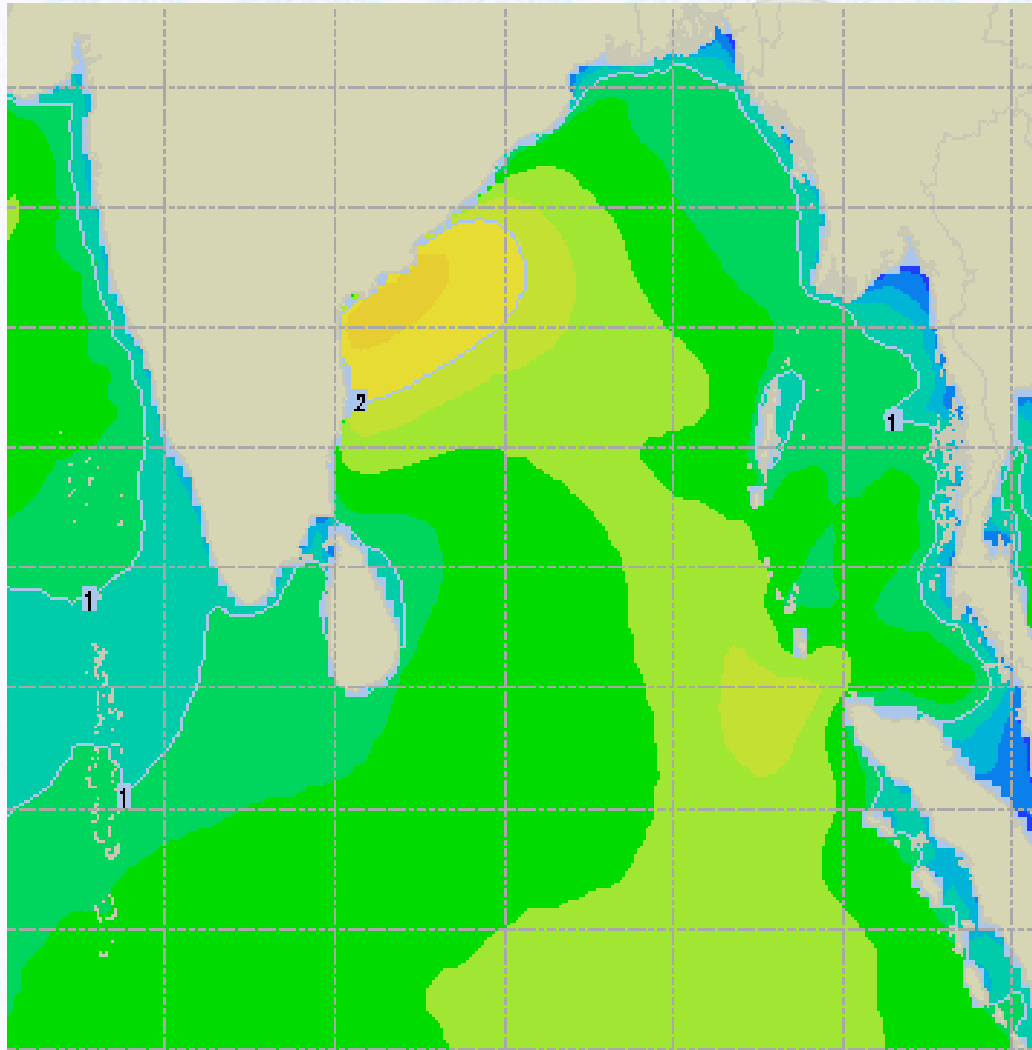
10 Knots



60 Knots



Sea State Forecast – 28 Nov- 2020



Sea State	Ht (m)
0	0-0.1
1	0-0.1
2	0.1-0.5
3	0.5-1.25
4	1.25-2.5
5	2.5-4.0
6	4-6
7	6-9
8	9-14
9	Over 14

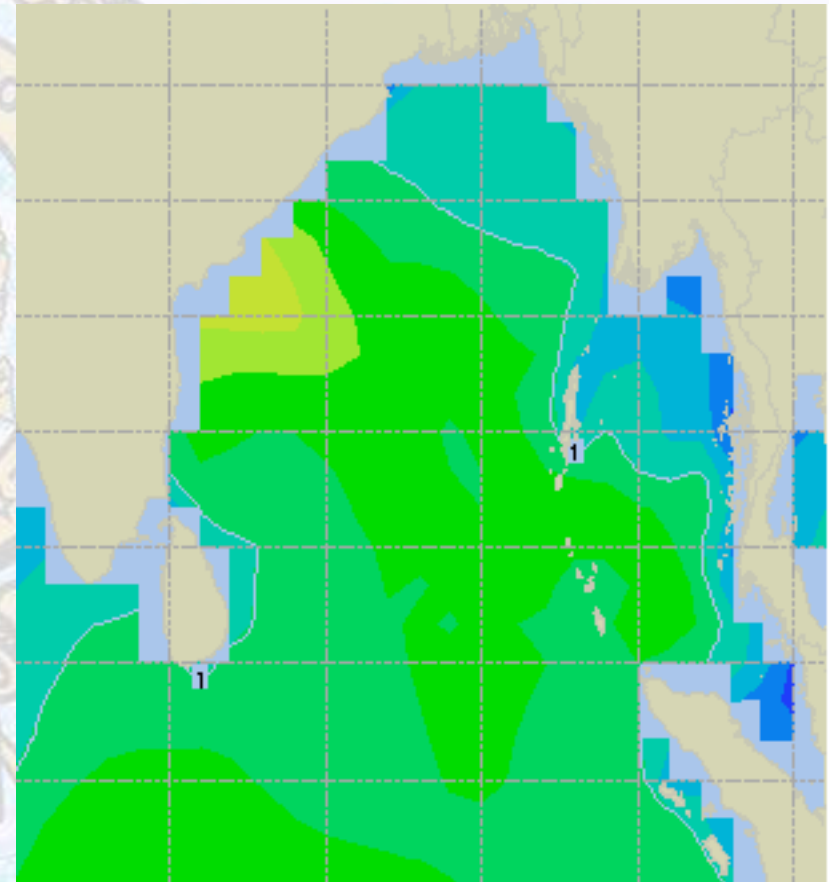
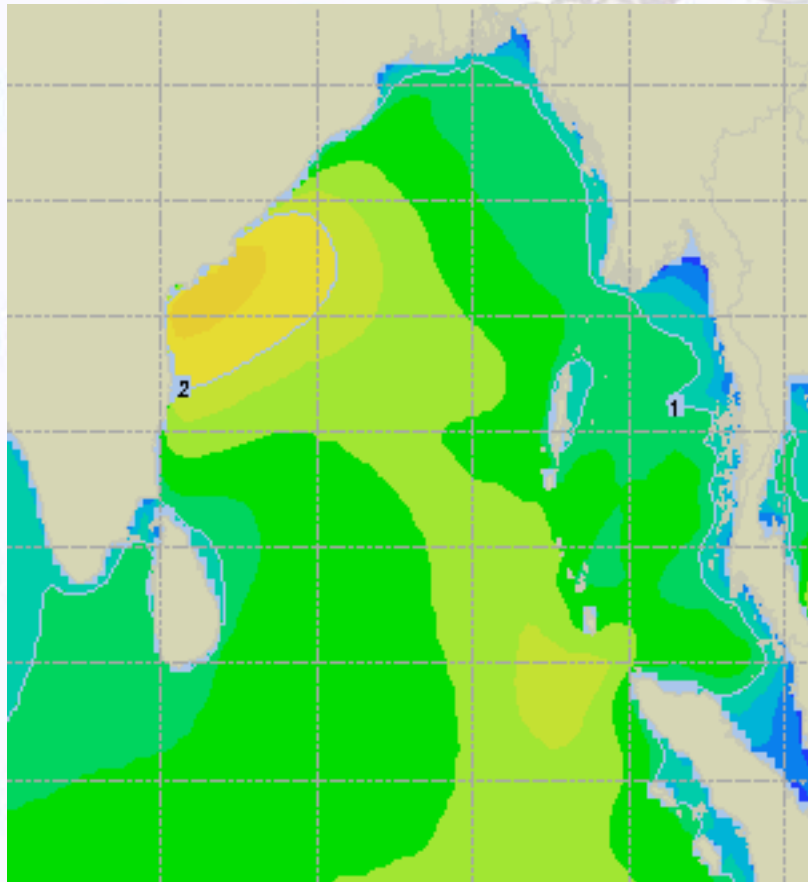




Sea State Forecast – 29 & 30 Nov- 2020

29 Nov 20 Sunday

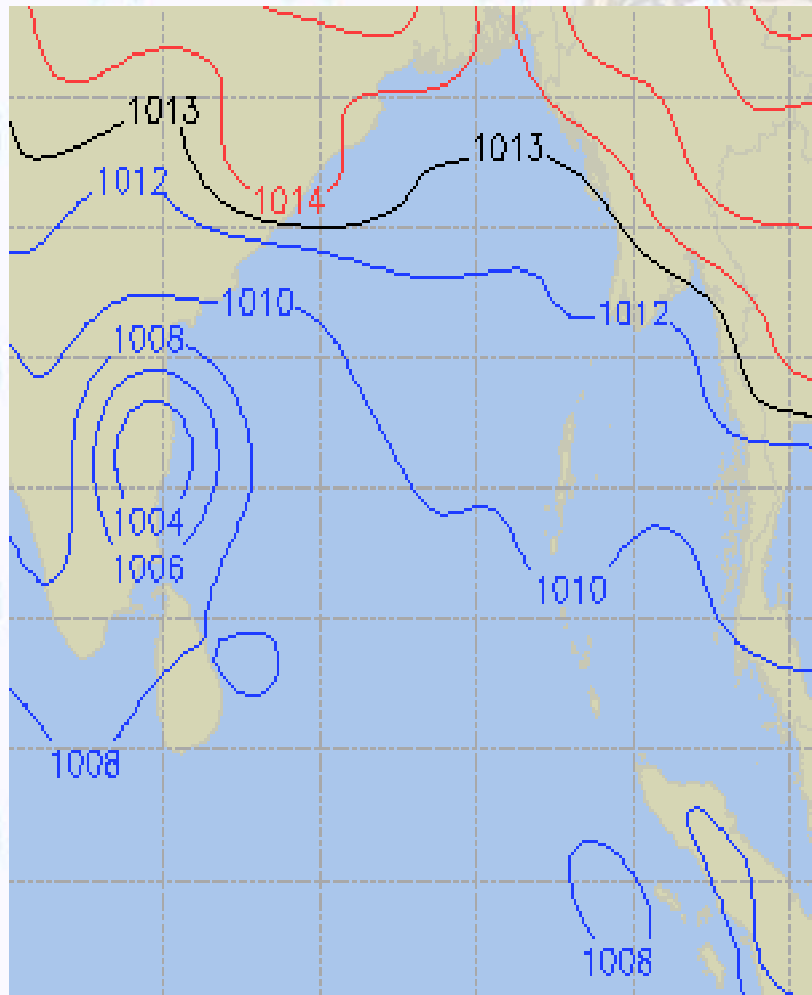
30 Nov 20 Monday



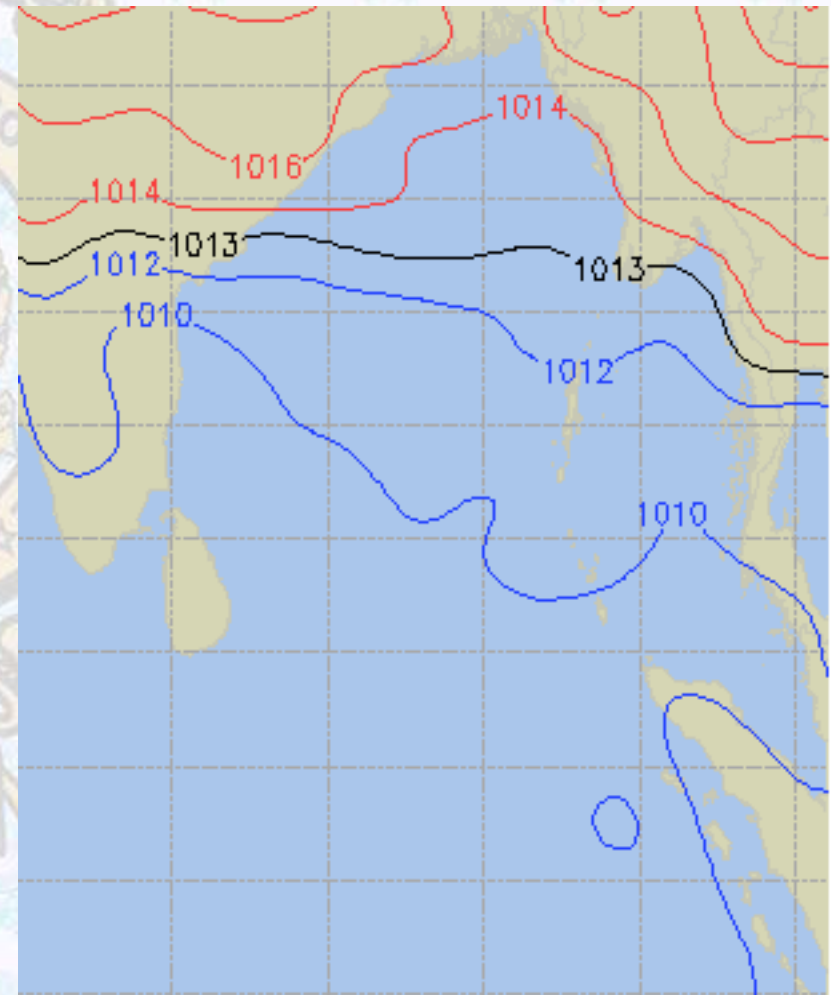


Surface Pressure forecast– 28 & 29 Nov 2020

28 Nov 20 Saturday



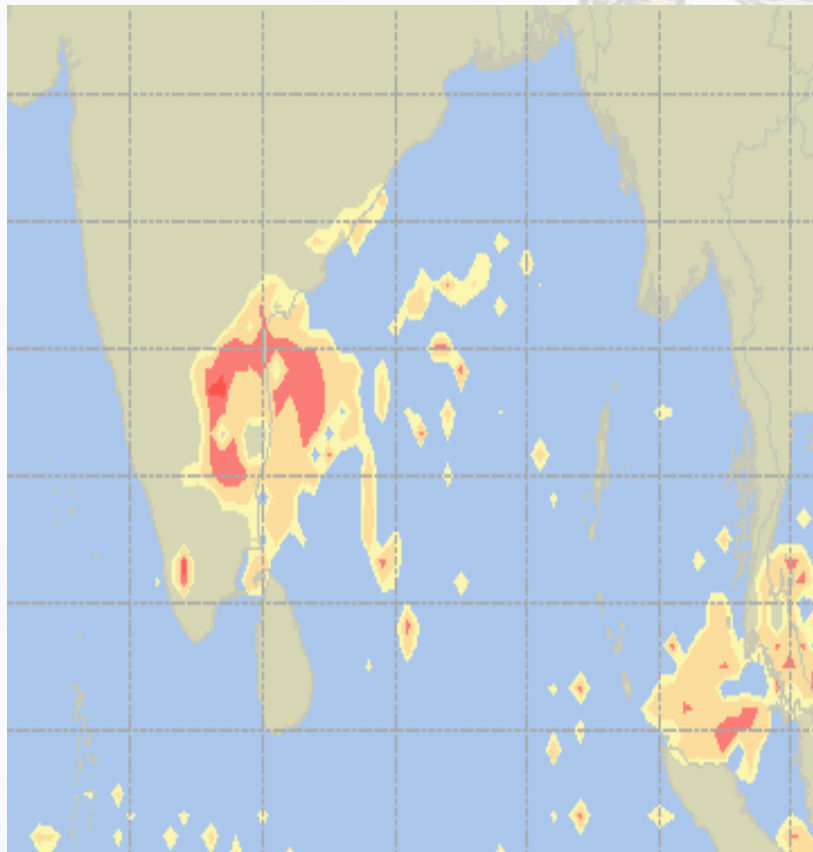
29 Nov 20 Sunday



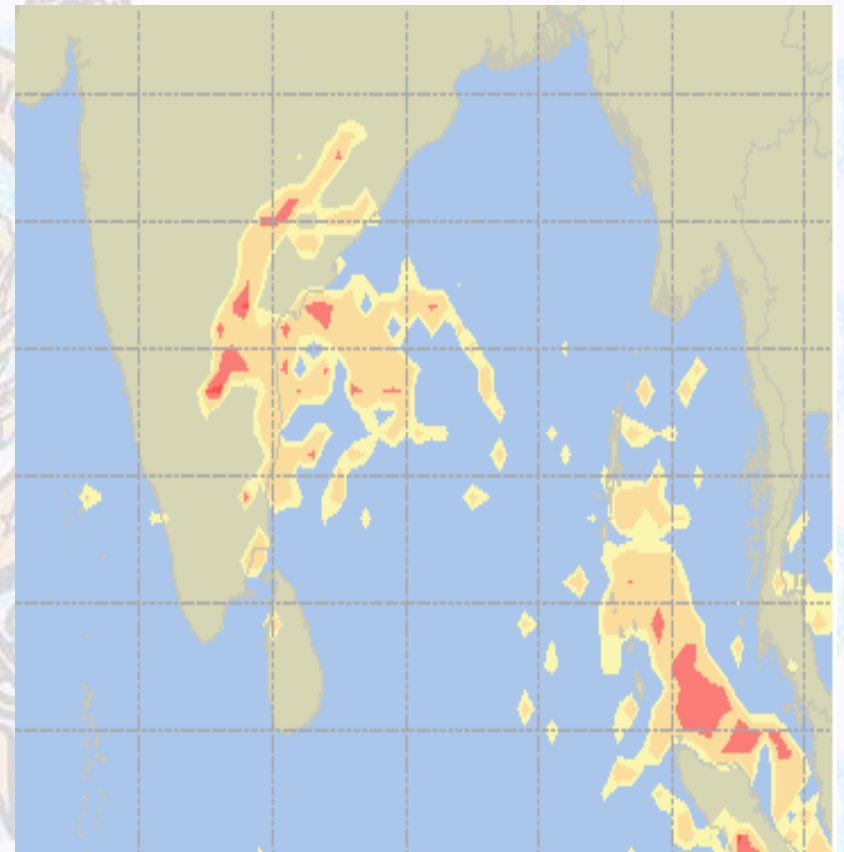


Visibility at Sea Forecast – 28 & 29 Nov 2020

28 Nov 20 Saturday



29 Nov 20 Sunday



Visibility Scale:



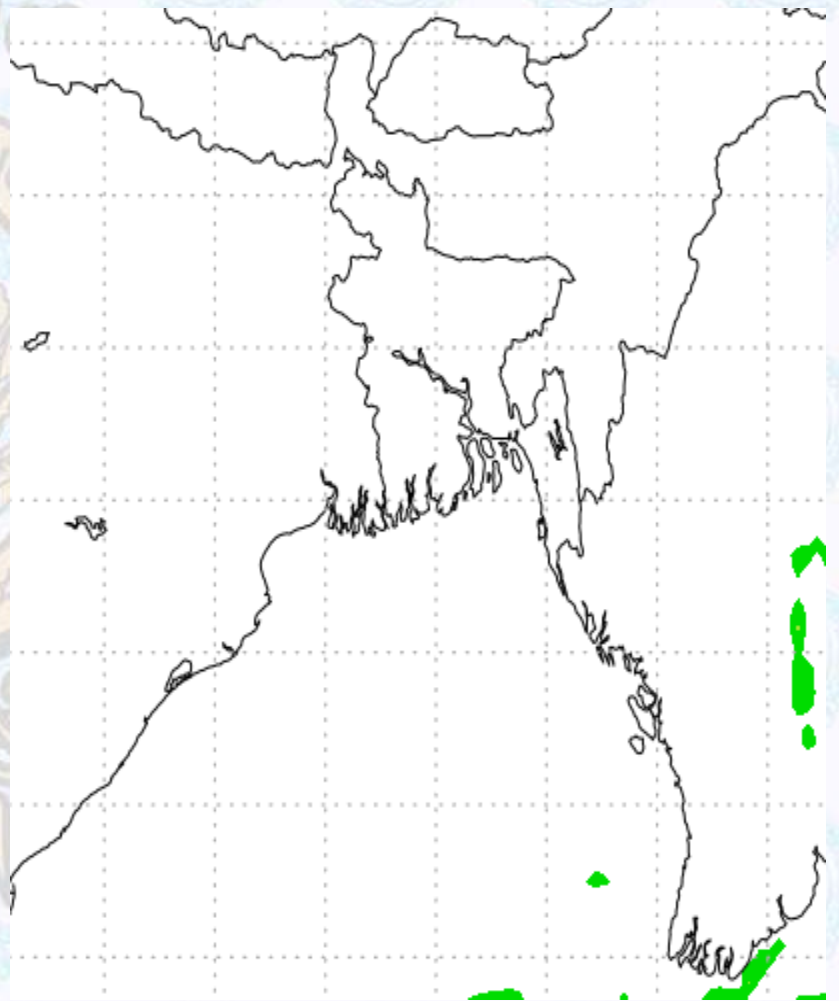
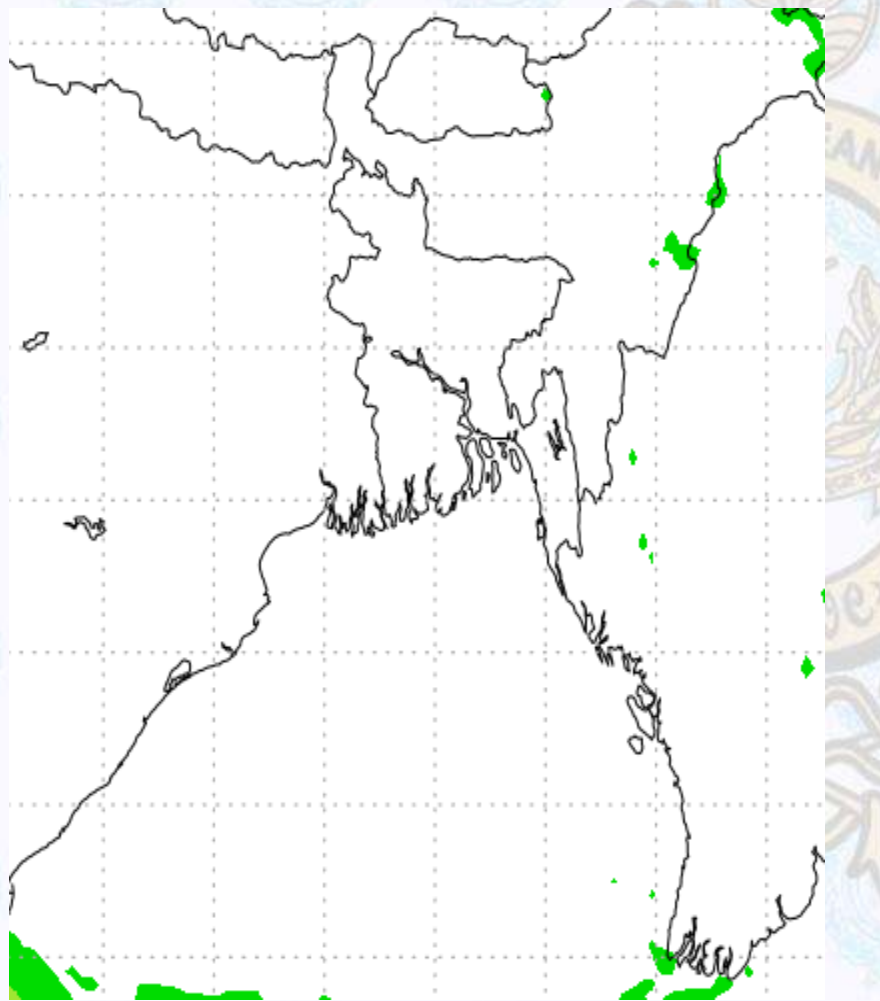
Ref (Slide 12-18): <http://www.weatheronline.co.uk/marine/weather?LEVEL>



Precipitation

Rain(mm) 28 & 29 Nov 2020

Rain(mm) 29 & 30 Nov 2020



Precipitation Scale (mm):





Tidal Information

KHAL NO. 10

COX'S BAZAR

HIRAN POINT

28 Nov 2020	Time	Height		Time	Height		Time	Height
	0613	0.68		0353	0.86		0337	0.98
	1201	4.05		0930	2.86		0928	2.60
	1813	0.65		1558	0.77		1533	0.80
	-	-		2150	3.29		2150	2.95
29 Nov 2020	Time	Height		Time	Height		Time	Height
	0016	4.53		0429	0.76		0412	0.90
	0646	0.61		1004	2.94		1002	2.63
	1231	4.10		1634	0.69		1606	0.74
	1844	0.59		2223	3.39		2220	2.98
30 Nov 2020	Time	Height		Time	Height		Time	Height
	0042	4.58		0503	0.69		0444	0.85
	0716	0.58		1036	2.99		1034	2.64
	1259	4.13		1708	0.63		1638	0.70
	1914	0.55		2256	3.43		2250	2.99