



WEATHER FORECAST FOR BN

23 - 26 NOV 2020





WEATHER FORECAST – DHAKA

23.11.2020

Hourly	2 PM	4 PM	8 PM	11 PM
Temp. / Dew Point	27 / 12	26 / 13	22 / 14	20 / 14
Wind	10 km/h N	9 km/h NNW	4 km/h NW	4 km/h NW
Humidity	42%	43%	59%	66%
Chance of Precip	0%	0%	2%	3%
Cloud Cover	0%	0%	0%	1%
Conditions	Sunny	Sunny	Clear	Clear
Sunrise Sunset	06: 18 AM 17: 10 PM			

Conditions

Pressure : 1017 hpa

Visibility : 3.22 km

Ref: <https://www.wunderground.com/weather/bd/dhaka>



WEATHER FORECAST – CHATTOGRAM

23.11.2020

Hourly	2 PM	4 PM	8 PM	11 PM
Temp. / Dew Point	28 / 17	27 / 18	24 / 19	22 / 18
Wind	12 km/h NNW	11 km/h NW	12 km/h NNW	9 km/h N
Humidity	60%	63%	72%	76%
Chance of Precip.	1%	1%	3%	4%
Cloud Cover	19%	1%	1%	1%
Conditions	Sunny	Sunny	Clear	Clear
Sunrise	06: 09 AM			
Sunset	17: 07 PM			

Conditions

Pressure : 1017 hpa

Visibility : 3.22 Km

Ref: <https://www.wunderground.com/weather/bd/chittagong>



WEATHER FORECAST – KHULNA

23.11.2020

Hourly	2 PM	4 PM	8 PM	11 PM
Temp. / Dew Point	27 / 13	26 / 13	20 / 13	18 / 13
Wind	13 km/h N	10 km/h N	5 km/h NNW	4 km/h NW
Humidity	38%	44%	64%	72%
Chance of Precip.	0%	0%	2%	3%
Cloud Cover	1%	1%	1%	5%
Conditions	Sunny	Sunny	Clear	Clear
Sunrise Sunset	06: 19 AM 17: 16 PM			

Conditions

Pressure : 1017 hpa

Visibility : 08.48 Km

Ref: <https://www.wunderground.com/weather/bd/khulna>



GENERAL WEATHER FORECAST – DHAKA

Description	24 Nov 2020	25 Nov 2020	26 Nov 2020
Temperature (C)	28°C/ 17°C	29°C/ 19°C	29°C/ 20°C
Summary	Partly Cloudy	Partly Cloudy	Partly Cloudy
Sun Rise/Set	6h19m36s/17h10m42s	6h20m36s/17h10m36s	6h21m06s/17h10m30s
Day Length	10h51m06s	10h50m12s	10h49m24s
Moon Rise/ Set	1:50 PM 1:01 AM	2:21 PM 1:51 AM	2:52PM 2:40AM
Moon Phase/ illu	Waxing Gibbous, 67%	Waxing Gibbous, 76%	Waxing Gibbous, 84%
NauticalTwilight	05:27,18:02	05:28,18:02	05:28,18:02
Civil Twilight	05:55,17:35	05:55,17:35	05:56,17:35
Humidity	D : 59% N : 75%	D : 60% N : 75%	D : 63% N : 73%
Barometer (mb)	1014	1014	1014
Visibility	Moderate	Moderate	Moderate
Precip Chance	10%	10%	10%
Wind (mph)	6 Km/h NNW	6 Km/h N	8 Km/h N

Ref: <https://weather.com/weather/5day//BGXX0003:1:BG>



GENERAL WEATHER FORECAST– CHATTOGRAM

Description	24 Nov 2020	25 Nov 2020	26 Nov 2020
Temperature (C)	29°C/ 19°C	30°C/ 19°C	30°C/ 19°C
Summary	Partly Cloudy	Partly Cloudy	Partly Cloudy
Sun Rise/Set	6h11m00s/17h07m36s	6h11m48s/17h07m36s	6h12m30s/17h07m30s
Day Length	10h56m36s	10h55m48s	10h55m00s
Moon Rise/ Set	1:44 PM 12:56 AM	2:15 PM 1:46 AM	2:52PM 2:40AM
Moon Phase/ illu	Waxing Gibbous, 67%	Waxing Gibbous, 76%	Waxing Gibbous, 84%
NauticalTwilight	05:19 17:59	05:20 17:59	05:20 17:59
Civil Twilight	05:46, 17:31	05:47, 17:31	05:48, 17:31
Humidity	D : 70% N : 85%	D : 72% N : 86%	D : 70% N : 88%
Barometer (mb)	1014	1014	1014
Visibility	Moderate	Moderate	Moderate
Precip Chance	10%	10%	10%
Wind (mph)	7 Km/h NNW	7 Km/h NNW	7 Km/h N

Ref: <https://weather.com/weather/5day//BGXX0002:1:BG>



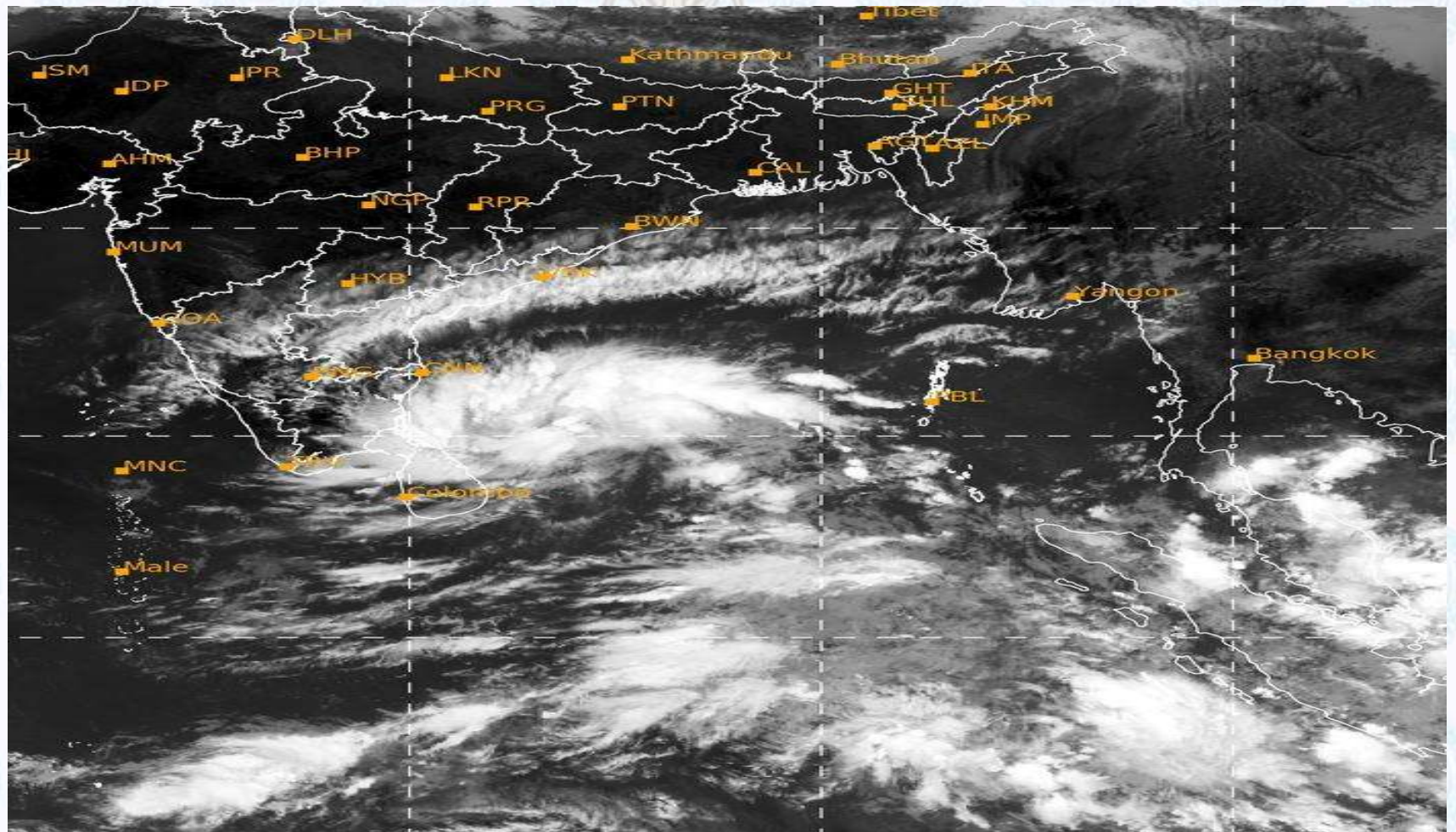
GENERAL WEATHER FORECAST – KHULNA

Description	24 Nov 2020	25 Nov 2020	26 Nov 2020
Temperature(C)	28°C/ 16°C	29°C/ 18°C	28°C/ 20°C
Summary	Partly Cloudy	Partly Cloudy	Partly Cloudy
Sun Rise/Set	6h21m12s/17h15m54s	6h22m00s/17h15m48s	6h22m42s/17h15m42s
Day Length	10h54m42s	10h53m48s	10h53m00s
Moon Rise/Set	1:53 PM 1:05 AM	2:25 PM 1:55 AM	2:52PM 2:40AM
Moon Phase/illu	Waxing Gibbous, 67%	Waxing Gibbous, 76%	Waxing Gibbous, 84%
NauticalTwilight	05:29, 18:07	05:30, 18:07	05:30, 18:07
Civil Twilight	05:56, 17:40	05:57, 17:40	05:58, 17:40
Humidity	D : 62% N : 84%	D : 66% N : 80%	D : 69% N : 82%
Barometer (mb)	1015	1015	1015
Visibility	Moderate	Moderate	Moderate
Precip Chance	10%	10%	10%
Wind (mph)	11 km/h N	8 km/h N	9 km/h N

Ref: <https://weather.com/weather/5day//BGXX0005:1:BG>



SATELLITE VIEW OF BAY OF BENGAL

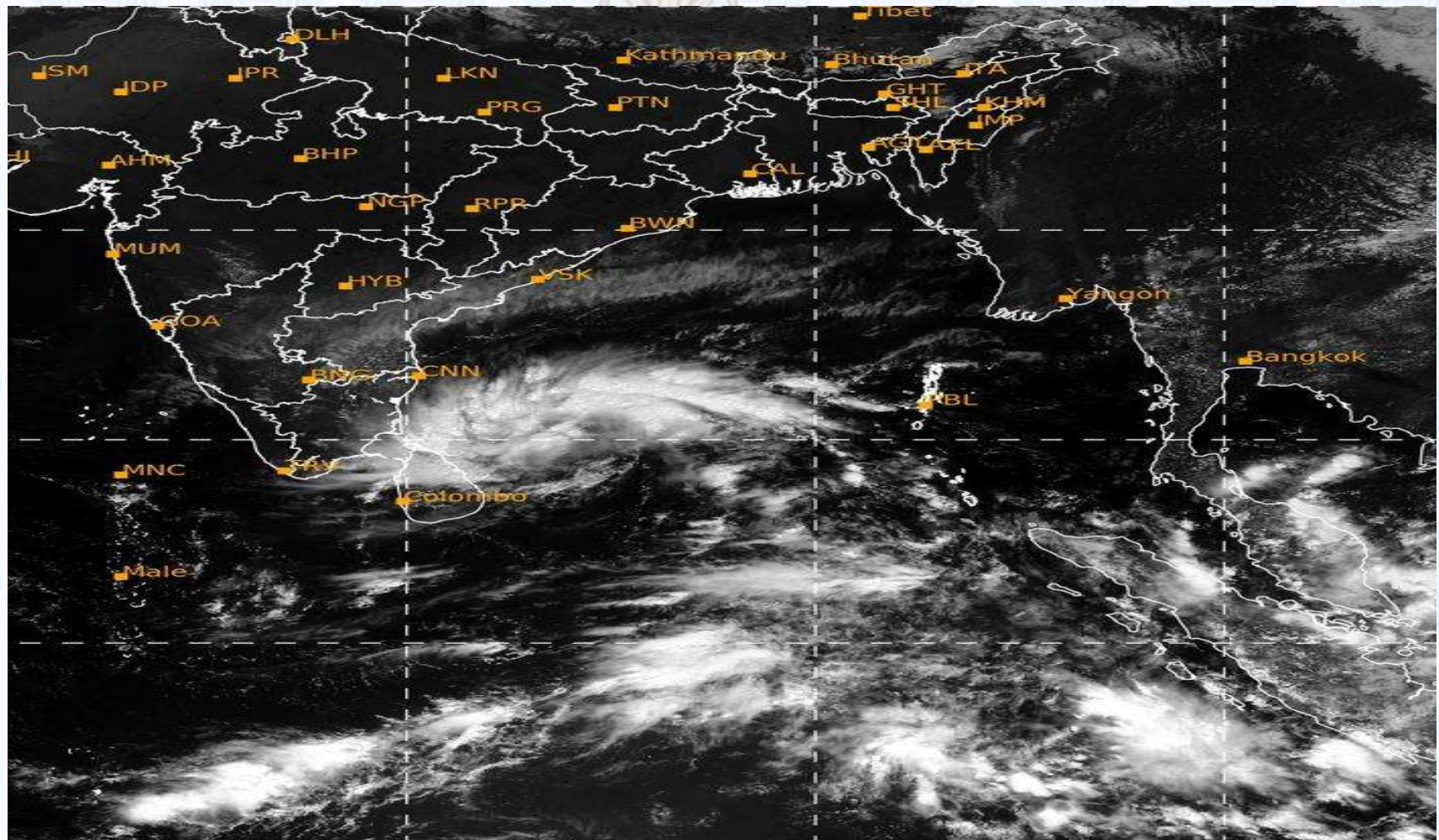


23/11/2020, 11:00 UTC MATSAT-IR

Ref: <http://satellite.imd.gov.in/insat.htm>



SATELLITE VIEW OF BAY OF BENGAL



23/11/2020, 11:00 MATSAT-VIS

Ref: <http://satellite.imd.gov.in/insat.htm>



Fleet Forecast Sea Area C-90 (Valid for 12 Hrs Commencing 1000 UTC of 23.11.2020)

Part One	NO STORM WARNING.	
Part Two	THE LOW OVER SOUTH BAY AND ADJOINING AREA INTENSIFIED INTO A WELL-MARKED LOW AND NOW LIES OVER SOUTH-WEST BAY AND ADJOINING AREA. IT IS LIKELY TO INTENSIFY.	
Part Three	Weather	TEMPORARY PARTLY CLOUDY OVER AREA C-90.
	Wind	N/NE'LY, 10-15 KTS.
	Visibility	03-05 KMS, REDUCING TO 1500 M OR LESS IN MIST/HAZE.
	Outlook	FOR SUBSEQUENT 12 HOURS: LITTLE CHANGE.
	MSL Pressure	AT = 23,0000 UTC. CHATTOGRAM =1014 HPA



Inland River Port Warning (VALID TILL 06 PM OF 23.11.2020)

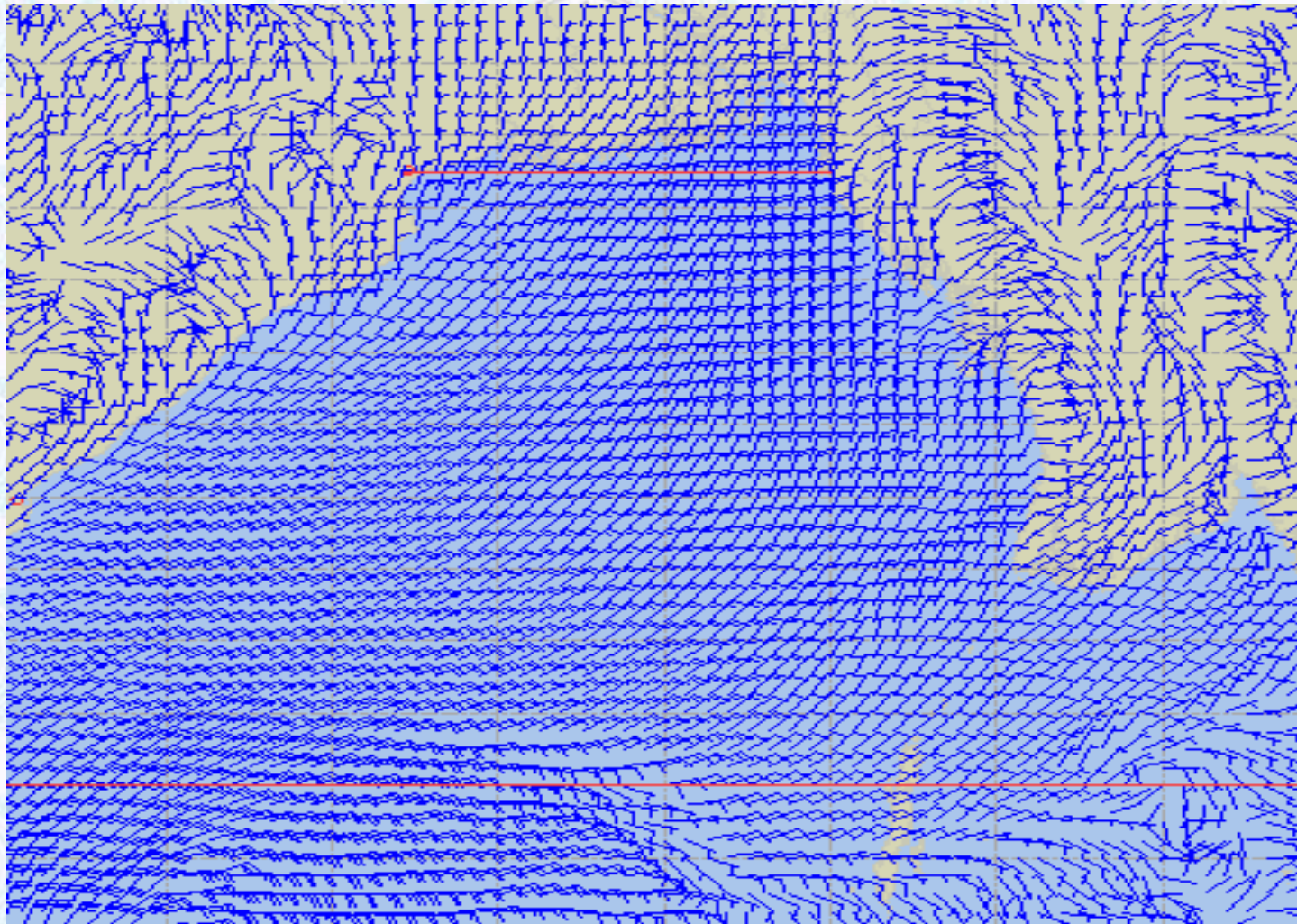
THERE IS NO INLAND RIVERPORT WARNING & NO SIGNAL IS TO BE HOISTED.



Ref: <http://www.bmd.gov.bd/?/home>



Surface Wind Forecast- 24 Nov - 2020



Legend:



**Calm
Winds**



5 Knots



10 Knots



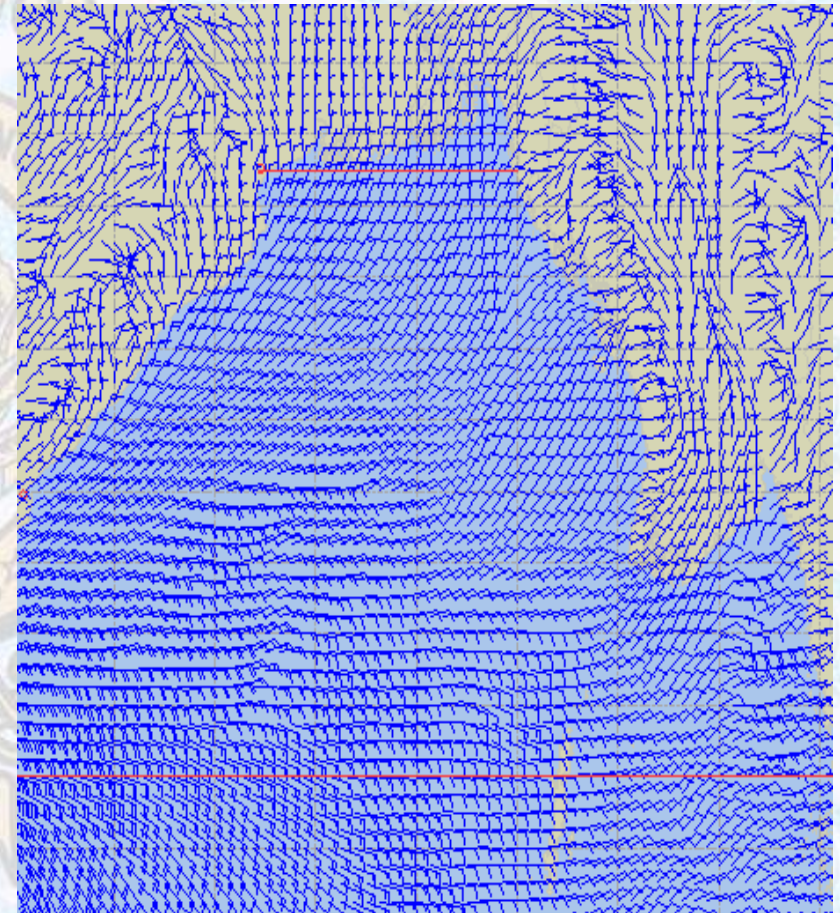
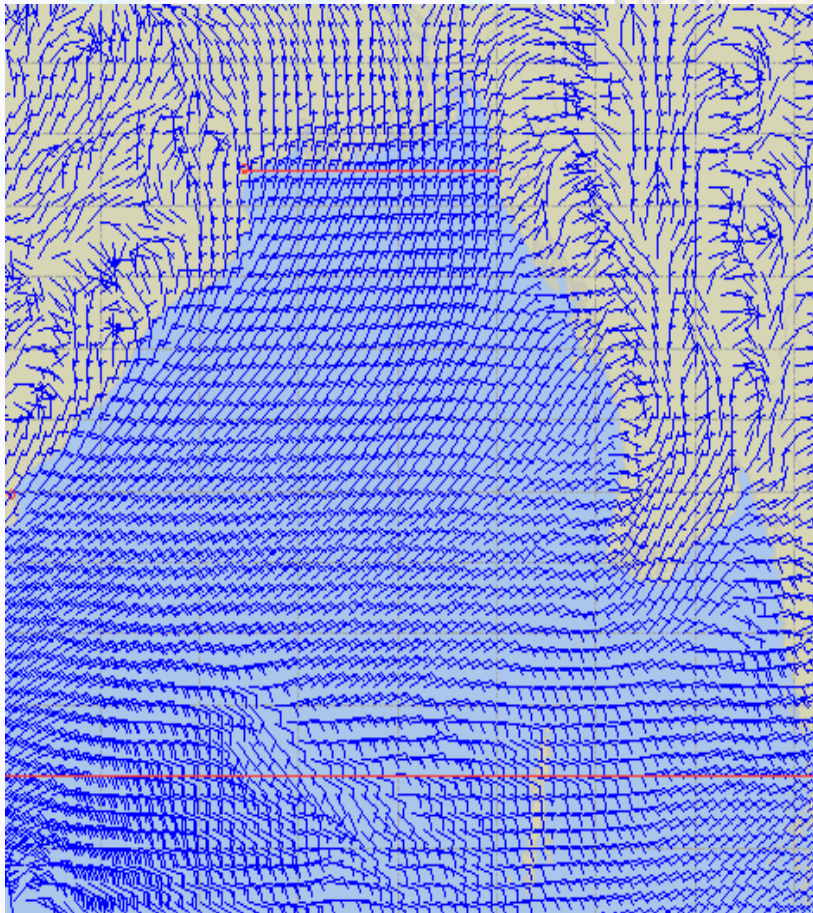
60 Knots



Surface Wind Forecast – 25 & 26 Nov- 2020

25 Nov 20 Wednesday

26 Nov 20 Thursday



Legend:



Calm
Winds



5 Knots



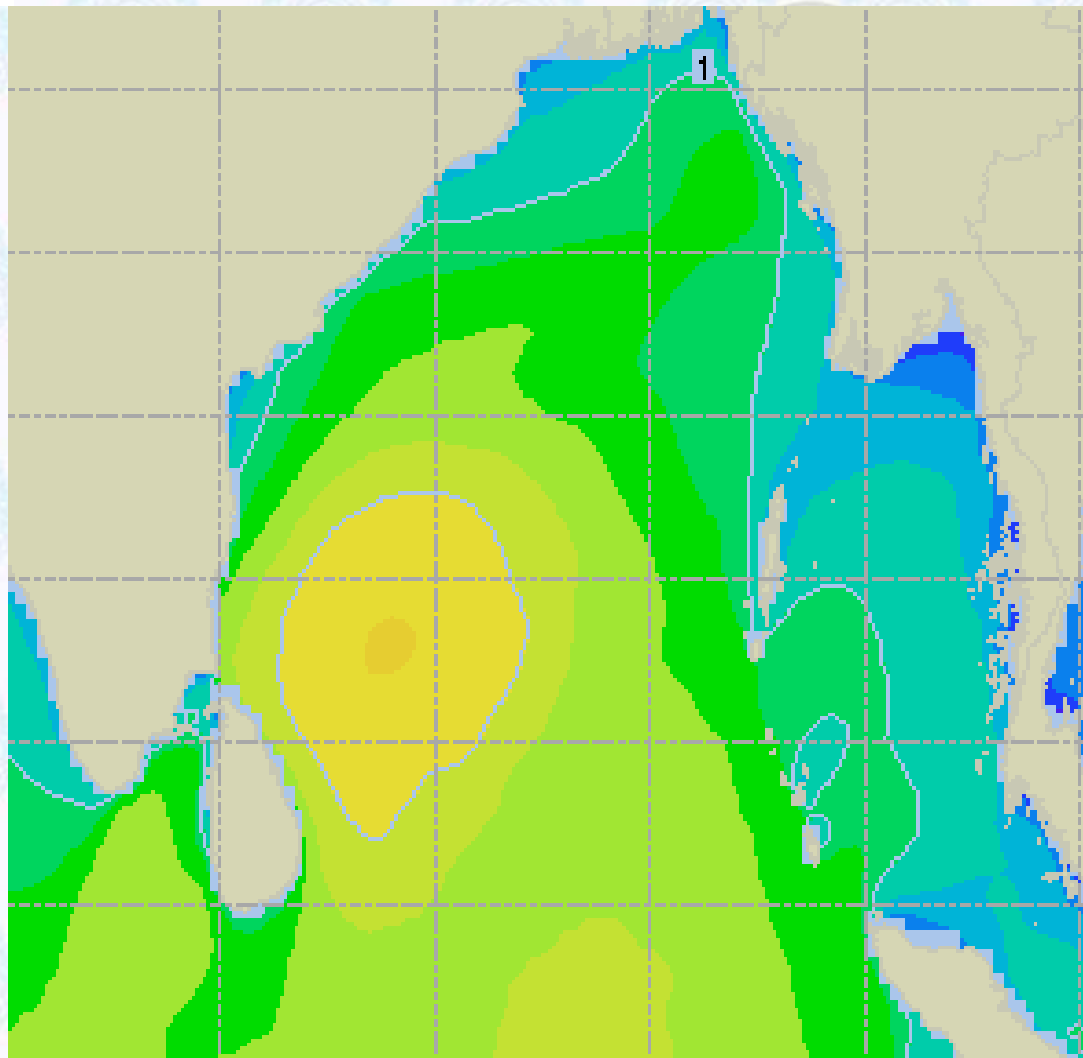
10 Knots



60 Knots



Sea State Forecast – 24 Nov- 2020



Sea State	Ht (m)
0	0-0.1
1	0-0.1
2	0.1-0.5
3	0.5-1.25
4	1.25-2.5
5	2.5-4.0
6	4-6
7	6-9
8	9-14
9	Over 14

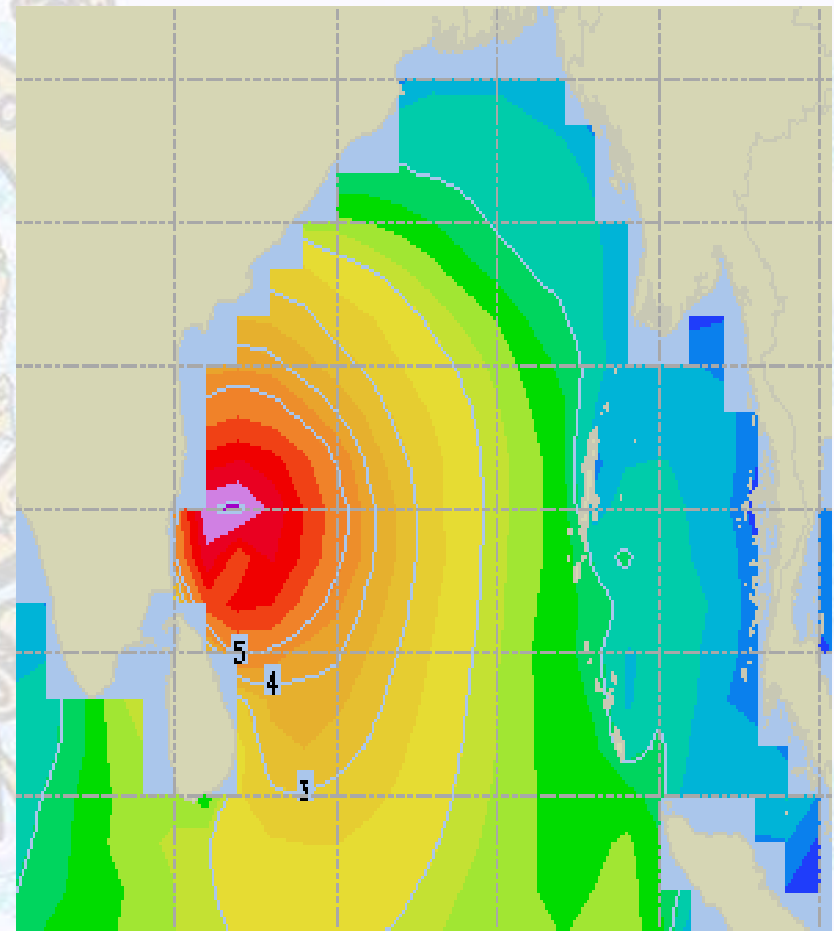
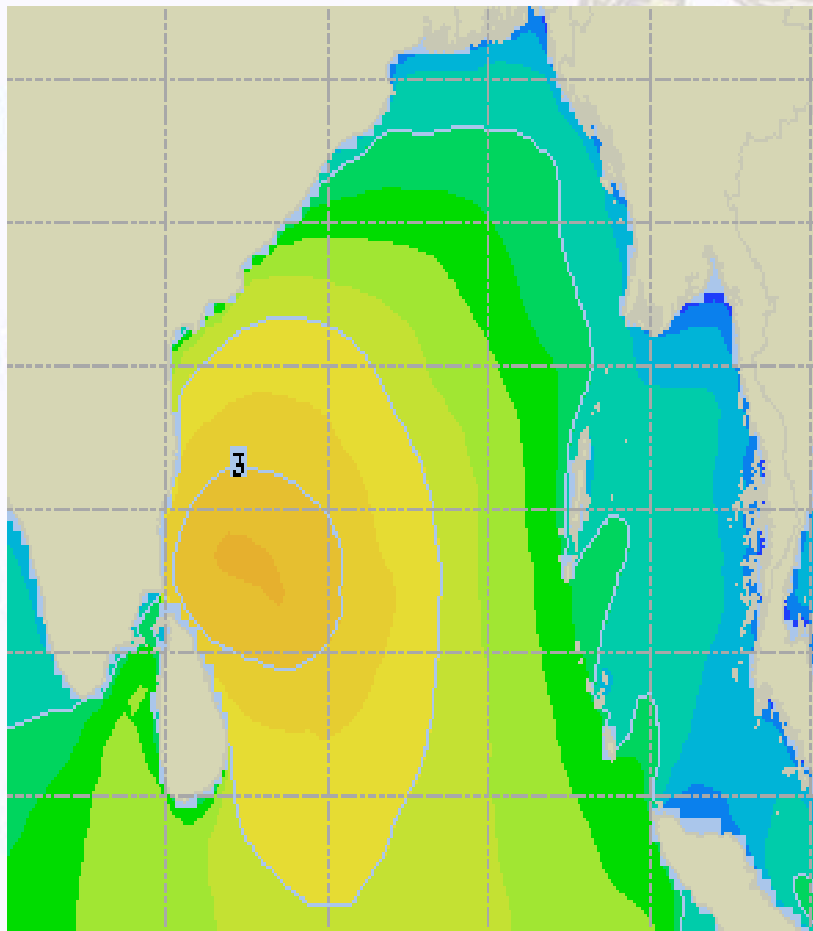




Sea State Forecast – 25 & 26 Nov- 2020

25 Nov 20 Wednesday

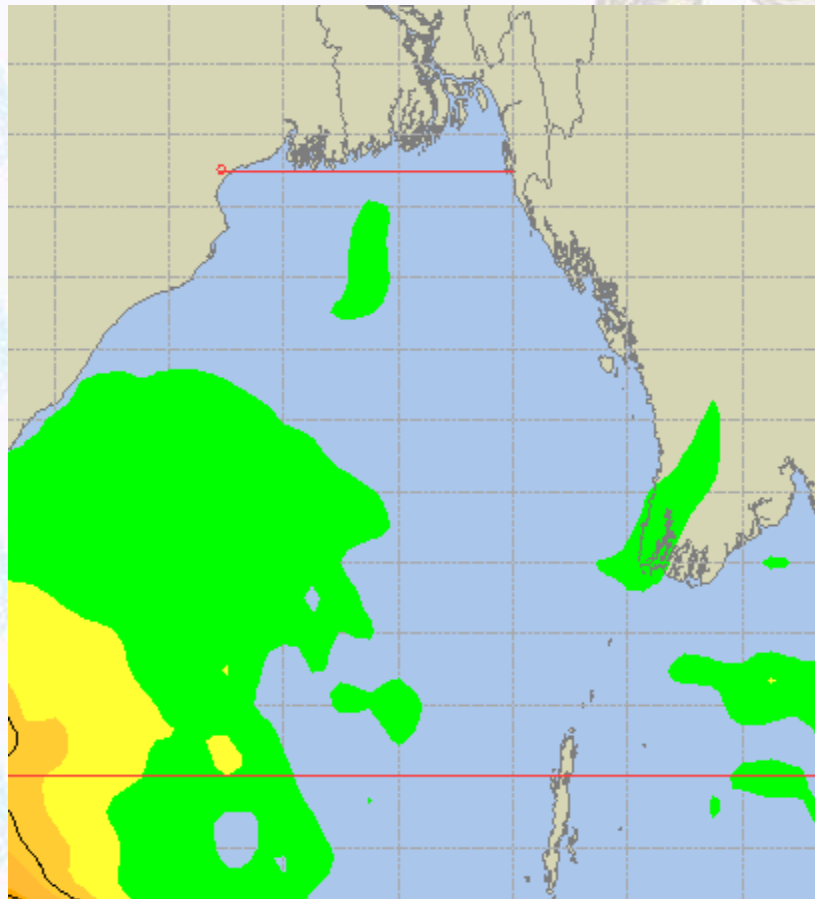
26 Nov 20 Thursday



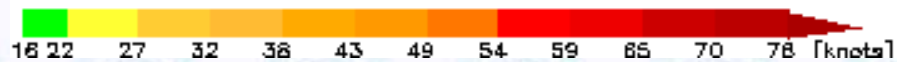
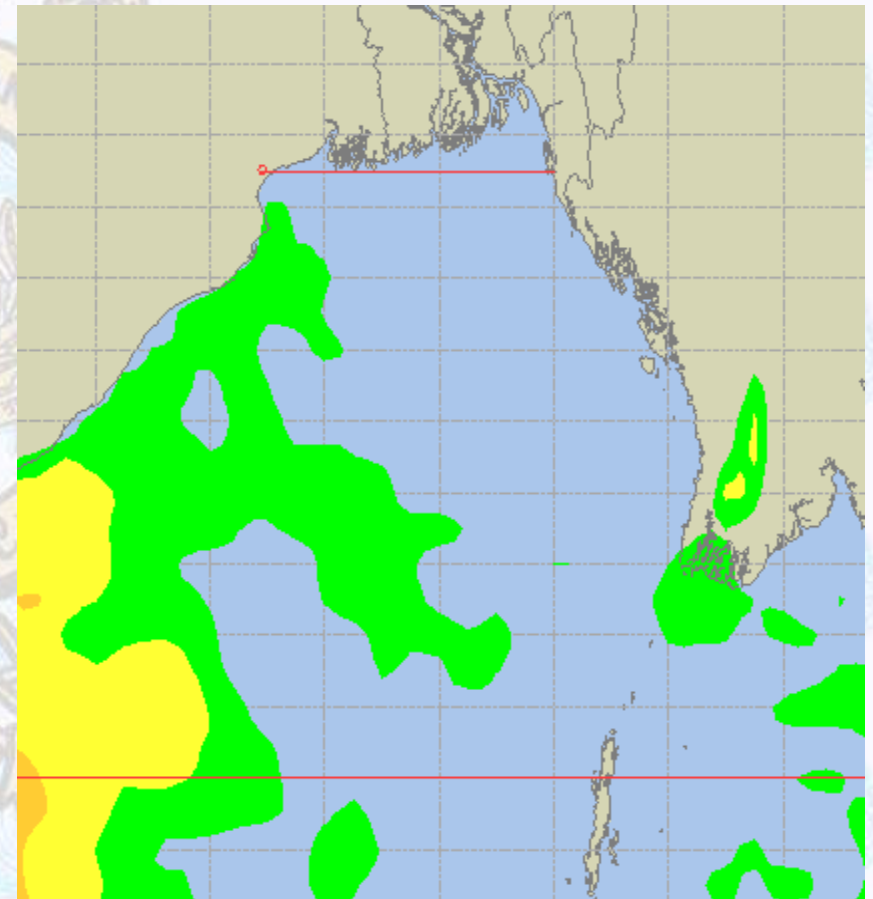


Peak Gusting Possibilities— 24 & 25 Nov 2020

24 Nov 20 Tuesday



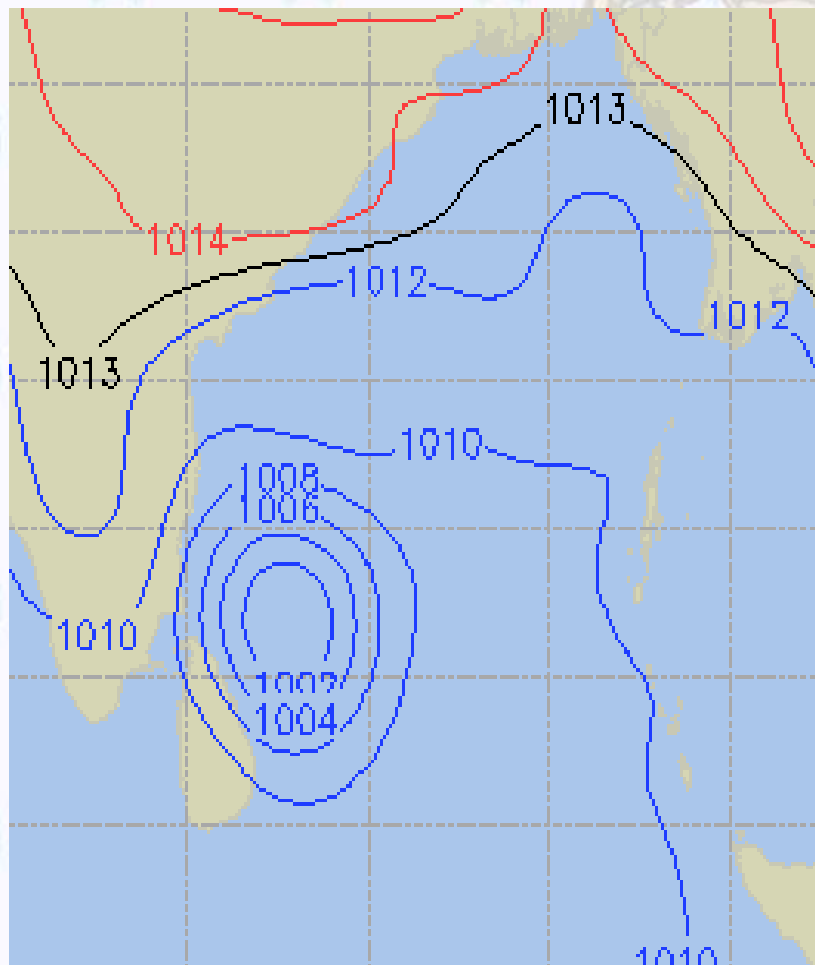
25 Nov 20 Wednesday



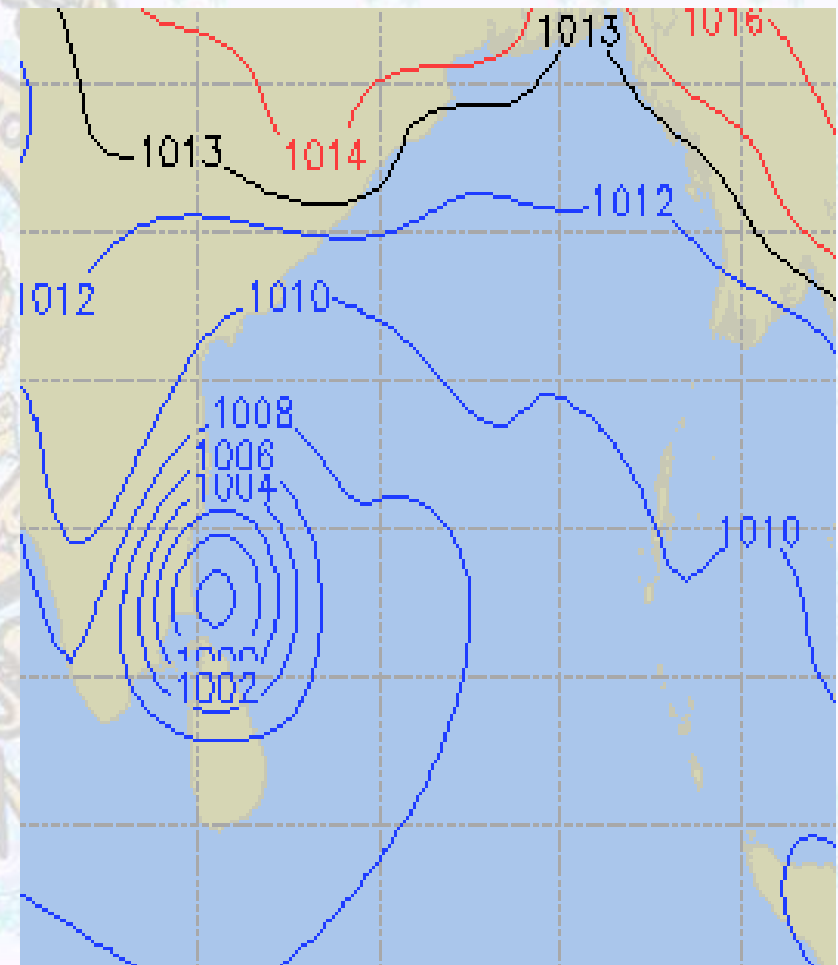


Surface Pressure forecast– 24 & 25 Nov 2020

24 Nov 20 Tuesday



25 Nov 20 Wednesday

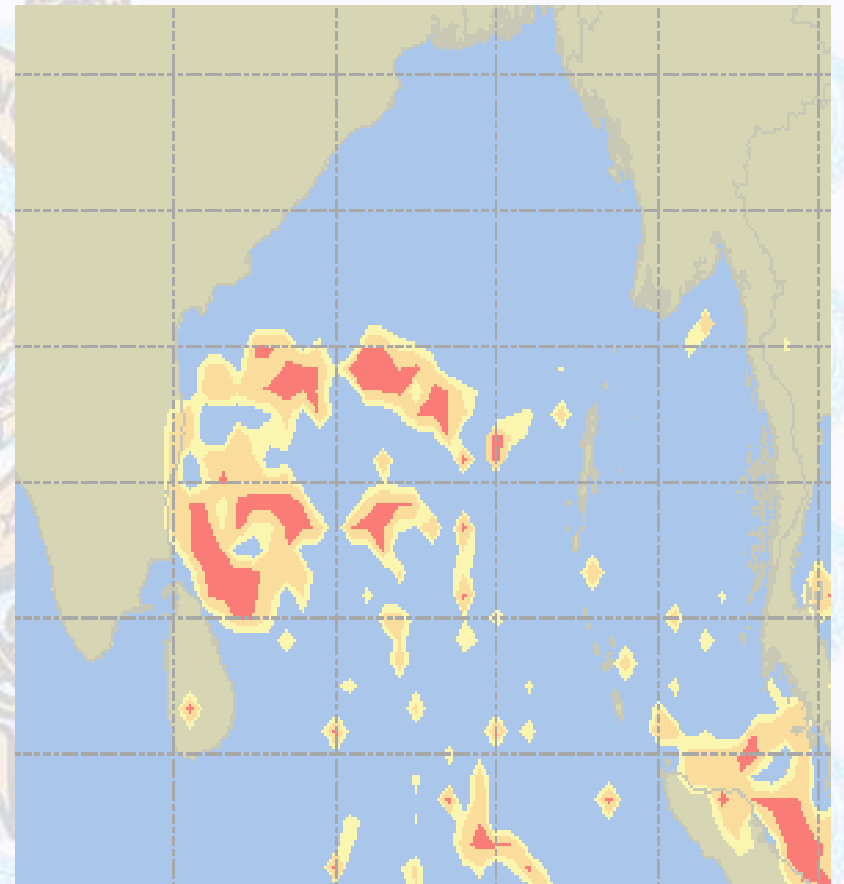
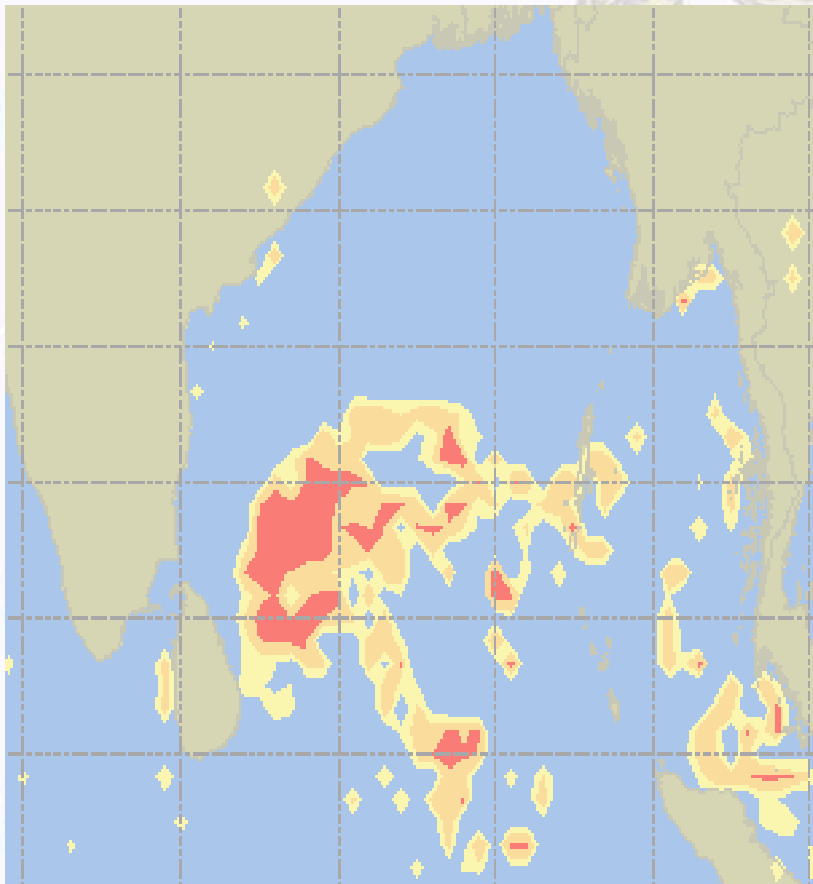




Visibility at Sea Forecast – 24 & 25 Nov 2020

24 Nov 20 Tuesday

25 Nov 20 Wednesday



Visibility Scale:

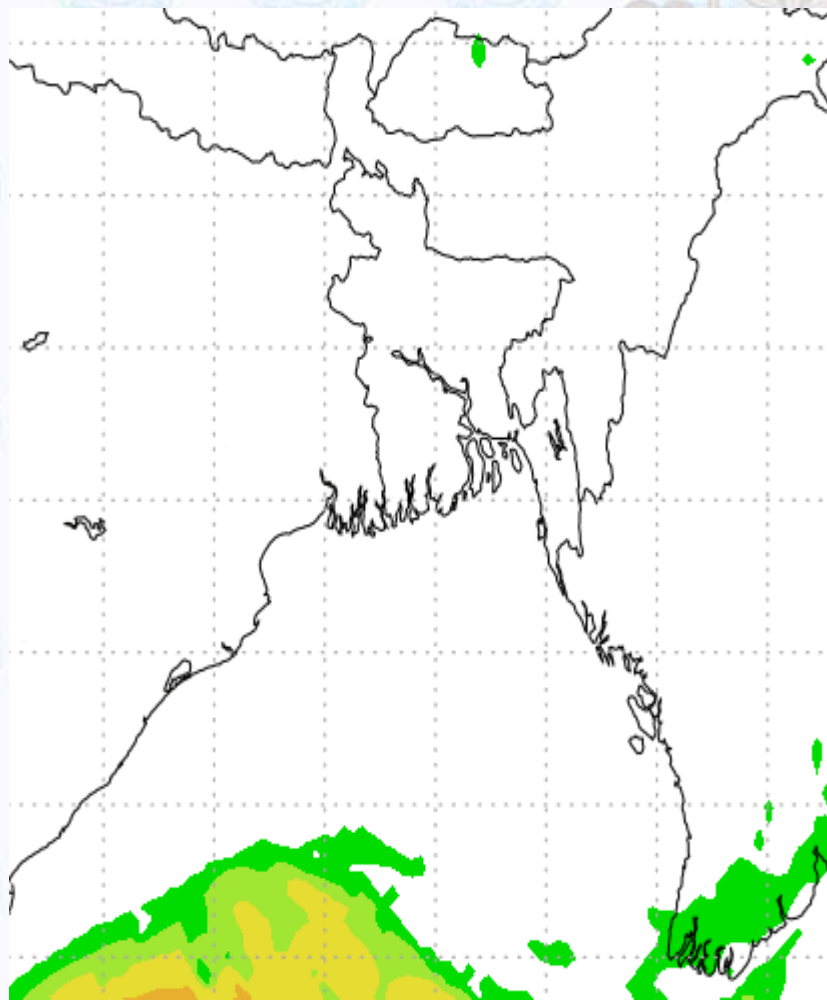


Ref (Slide 12-18): <http://www.weatheronline.co.uk/marine/weather?LEVEL>

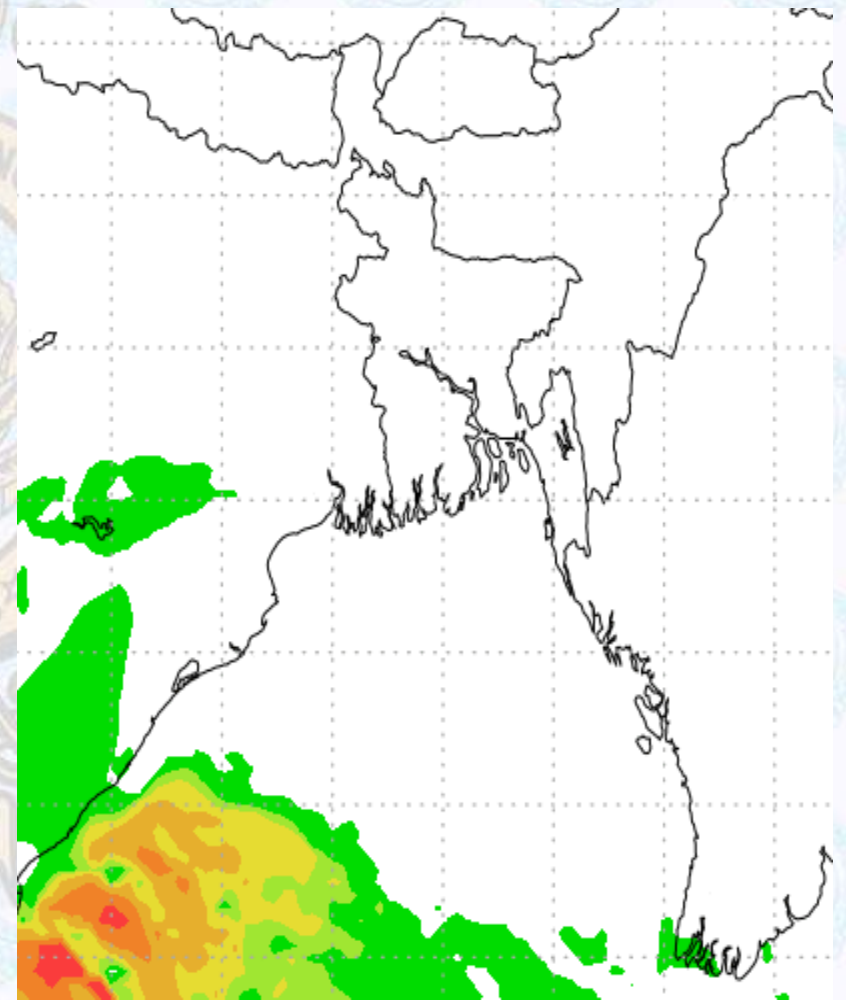


Precipitation

Rain(mm) 24 & 25 Nov 2020



Rain(mm) 25 & 26 Nov 2020



Precipitation Scale (mm):





Tidal Information

KHAL NO. 10

COX'S BAZAR

HIRAN POINT

24 Nov 2020	Time	Height		Time	Height		Time	Height
	0249	1.44		0008	1.28		0607	2.46
	0848	3.70		0600	2.51		1240	1.19
	1519	1.01		1250	1.18		1910	2.47
	2142	3.91		1859	2.55		-	-
25 Nov 2020	Time	Height		Time	Height		Time	Height
	0359	1.24		0122	1.22		0113	1.37
	0954	3.76		0713	2.55		0715	2.48
	1615	0.92		1348	1.10		1335	1.09
	2234	4.13		1954	2.74		2002	2.63
26 Nov 2020	Time	Height		Time	Height		Time	Height
	0453	1.01		0223	1.10		0211	1.24
	1046	3.86		0808	2.64		0807	2.52
	1701	0.82		1437	0.99		1420	0.99
	2314	4.31		2037	2.95		2043	2.76