



WEATHER FORECAST FOR BN

22 - 25 NOV 2020



WEATHER FORECAST – DHAKA

22.11.2020

Hourly	2 PM	4 PM	8 PM	11 PM
Temp. / Dew Point	27 / 13	26 / 13	22 / 14	21 / 14
Wind	12 km/h NW	11 km/h WNW	4 km/h NW	3 km/h NNW
Humidity	42%	43%	59%	65%
Chance of Precip	1%	1%	2%	3%
Cloud Cover	1%	1%	1%	1%
Conditions	Sunny/ Partly Cloudy	Sunny/ Partly Cloudy	Sunny/ Partly Cloudy	Sunny/ Partly Cloudy
Sunrise Sunset	06: 18 AM 17: 10 PM			

Conditions

Pressure : 1014 hpa

Visibility : 3.22 km

Ref: <https://www.wunderground.com/weather/bd/dhaka>



WEATHER FORECAST – CHATTOGRAM

22.11.2020

Hourly	2 PM	4 PM	8 PM	11 PM
Temp. / Dew Point	29 / 20	28 / 20	25 / 20	23 / 19
Wind	14 km/h NNW	11 km/h NNW	11 km/h NNW	10 km/h N
Humidity	60%	63%	72%	76%
Chance of Precip.	1%	1%	3%	4%
Cloud Cover	19%	1%	1%	1%
Conditions	Sunny/ Partly Cloudy	Sunny/ Partly Cloudy	Sunny/ Partly Cloudy	Sunny/ Partly Cloudy
Sunrise Sunset	06: 09 AM 17: 07 PM			

Conditions

Pressure : 1014 hpa

Visibility : 3.22 Km

Ref: <https://www.wunderground.com/weather/bd/chittagong>



WEATHER FORECAST – KHULNA

22.11.2020

Hourly	2 PM	4 PM	8 PM	11 PM
Temp. / Dew Point	22/ 13	27 / 14	21 / 14	19 / 14
Wind	11 km/h NNW	10 km/h NNW	5 km/h NNW	3 km/h N
Humidity	40%	46%	64%	74%
Chance of Precip.	1%	1%	2%	4%
Cloud Cover	1%	1%	1%	1%
Conditions	Sunny/ Partly Cloudy	Sunny/ Partly Cloudy	Sunny/ Partly Cloudy	Sunny/ Partly Cloudy
Sunrise Sunset	06: 19 AM 17: 16 PM			

Conditions

Pressure : 1014 hpa

Visibility : 14.48 Km

Ref: <https://www.wunderground.com/weather/bd/khulna>



GENERAL WEATHER FORECAST – DHAKA

Description	23 Nov 2020	24 Nov 2020	25 Nov 2020
Temperature (C)	28 °C / 17 °C	28 °C / 18 °C	29 °C / 19 °C
Summary	Sunny	Partly Cloudy	Partly Cloudy
Sun Rise/Set	6h18m54s/17h10m48s	6h19m36s/17h10m42s	6h20m36s/17h10m36s
Day Length	10h51m54s	10h51m06s	10h50m12s
Moon Rise/ Set	1:17 PM 12:08 AM	1:50 PM 1:01 AM	2:21 PM 1:51 AM
Moon Phase/ illu	Waxing Gibbous, 57%	Waxing Gibbous, 67%	Waxing Gibbous, 76%
Nautical Twilight	05:26, 18:01	05:27, 18:02	05:28, 18:02
Civil Twilight	05:54, 17:34	05:55, 17:35	05:55, 17:35
Humidity	D : 53% N : 72%	D : 60% N : 75%	D : 62% N : 74%
Barometer (mb)	1016	1015	1014
Visibility	Moderate	Moderate	Moderate
Precip Chance	1%	10%	10%
Wind (mph)	9 Km/h N	6 Km/h NNW	7 Km/h NNW

Ref: <https://weather.com/weather/5day//BGXX0003:1:BG>



GENERAL WEATHER FORECAST– CHATTOGRAM

Description	23 Nov 2020	24 Nov 2020	25 Nov 2020
Temperature (C)	28 °C/ 17 °C	28 °C/ 18 °C	30 °C/ 19 °C
Summary	Sunny	Partly Cloudy	Cloudy/ Light Rain
Sun Rise/Set	6h10m24s/17h07m42s	6h11m00s/17h07m36s	6h11m48s/17h07m36s
Day Length	10h57m18s	10h56m36s	10h55m48s
Moon Rise/ Set	1:10 PM 12:04 AM	1:44 PM 12:56 AM	2:15 PM 1:46 AM
Moon Phase/ illu	Waxing Gibbous, 57%	Waxing Gibbous, 67%	Waxing Gibbous, 76%
NauticalTwilight	05:18 17:57	05:19 17:59	05:20 17:59
Civil Twilight	05:47, 17:30	05:46, 17:31	05:47, 17:31
Humidity	D : 62% N : 83%	D : 69% N : 85%	D : 71% N : 86%
Barometer (mb)	1015	1014	1014
Visibility	Moderate	Moderate	Moderate
Precip Chance	10%	10%	10%
Wind (mph)	11 Km/h NNW	7 Km/h NNW	7 Km/h NNW

Ref: <https://weather.com/weather/5day//BGXX0002:1:BG>



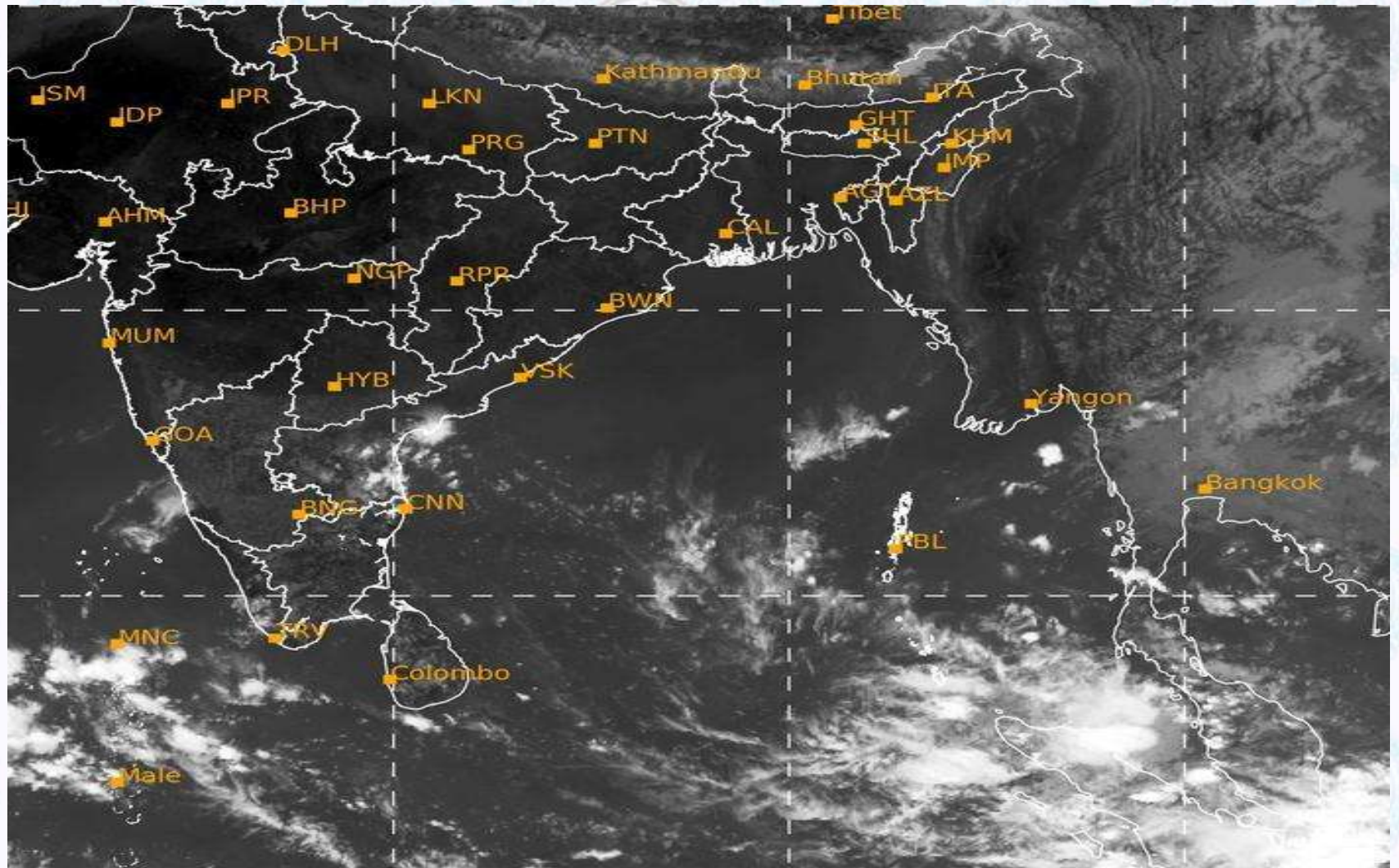
GENERAL WEATHER FORECAST – KHULNA

Description	23 Nov 2020	24 Nov 2020	25 Nov 2020
Temperature(C)	27°C/ 16°C	28°C/ 16°C	28°C/ 18°C
Summary	Sunny	Partly Cloudy	Partly Cloudy
Sun Rise/Set	6h20m30s/17h15m54s	6h21m12s/17h15m54s	6h22m00s/17h15m48s
Day Length	10h55m24s	10h54m42s	10h53m48s
Moon Rise/Set	1:20 PM 12:13 AM	1:53 PM 1:05 AM	2:25 PM 1:55 AM
Moon Phase/illu	Waxing Gibbous, 57%	Waxing Gibbous, 67%	Waxing Gibbous, 76%
Nautical Twilight	05:28, 18:06	05:29, 18:07	05:30, 18:07
Civil Twilight	05:56, 17:38	05:56, 17:40	05:57, 17:40
Humidity	D : 50% N : 70 %	D : 60% N : 76%	D : 62% N : 75%
Barometer (mb)	1016	1015	1015
Visibility	Moderate	Moderate	Moderate
Precip Chance	1%	10%	10%
Wind (mph)	12 km/h N	10 km/h NNW	9 km/h N

Ref: <https://weather.com/weather/5day//BGXX0005:1:BG>



SATELLITE VIEW OF BAY OF BENGAL

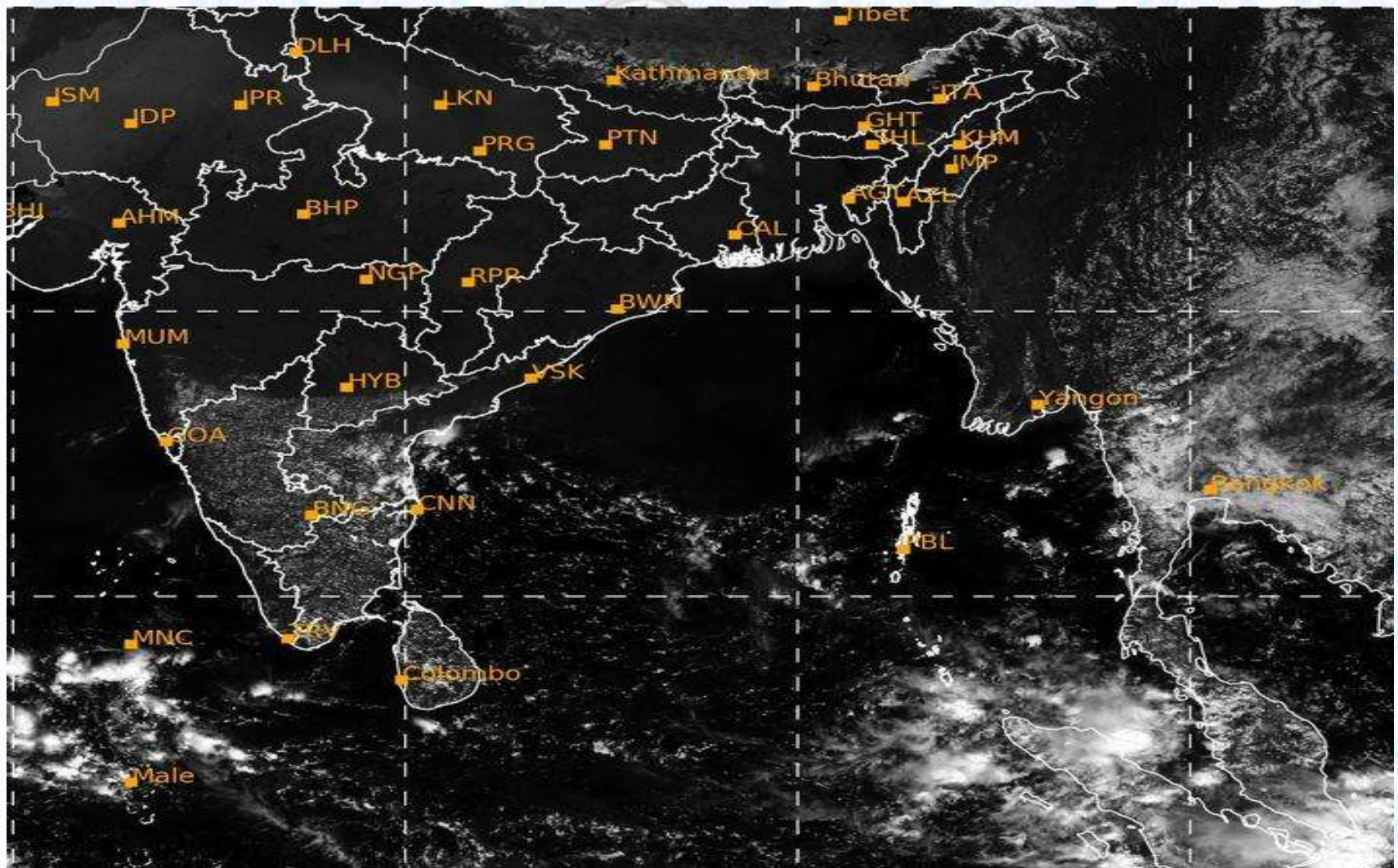


22/11/2020, 11:00 UTC MATSAT-IR

Ref: <http://satellite.imd.gov.in/insat.htm>



SATELLITE VIEW OF BAY OF BENGAL



22/11/2020, 11:00 MATSAT-VIS

Ref: <http://satellite.imd.gov.in/insat.htm>



Fleet Forecast Sea Area C-90 (Valid for 12 Hrs Commencing 1000 UTC of 22.11.2020)

Part One	NO STORM WARNING.	
Part Two	A LOW PRESSURE AREA HAS FORMED OVER SOUTH BAY AND ADJOINING AREA.	
Part Three	Weather	TEMPORARY PARTLY CLOUDY OVER AREA C-90.
	Wind	NORTH/NORTH-EASTERLY, 08-12 KTS,
	Visibility	03-05 KMS, REDUCING TO 1500 M OR LESS IN MIST/HAZE.
	Outlook	FOR SUBSEQUENT 12 HOURS: LITTLE CHANGE.
	MSL Pressure	AT = 22,0000 UTC. CHATTOGRAM =1014 HPA



Inland River Port Warning (VALID TILL 06 PM OF 22.11.2020)

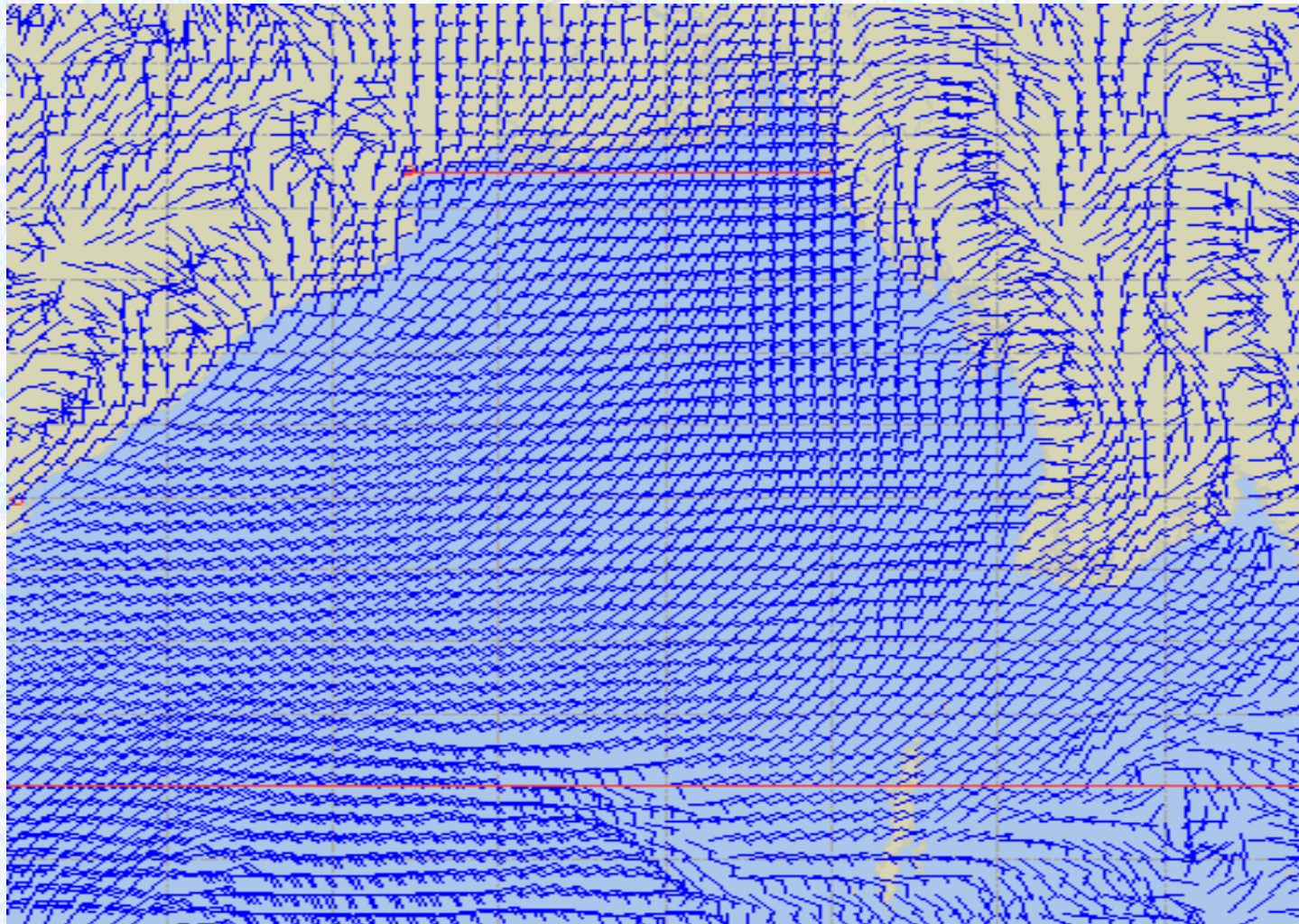
THERE IS NO INLAND RIVERPORT WARNING & NO SIGNAL IS TO BE HOISTED.



Ref: <http://www.bmd.gov.bd/?/home>



Surface Wind Forecast- 23 Nov - 2020



Legend:



**Calm
Winds**



5 Knots



10 Knots



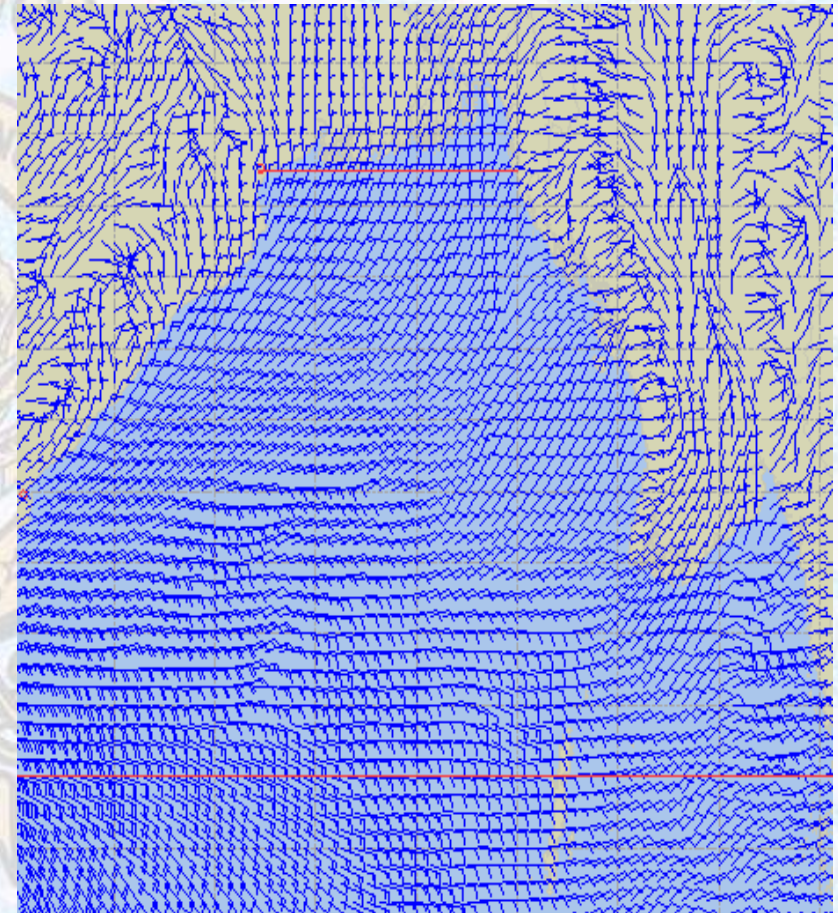
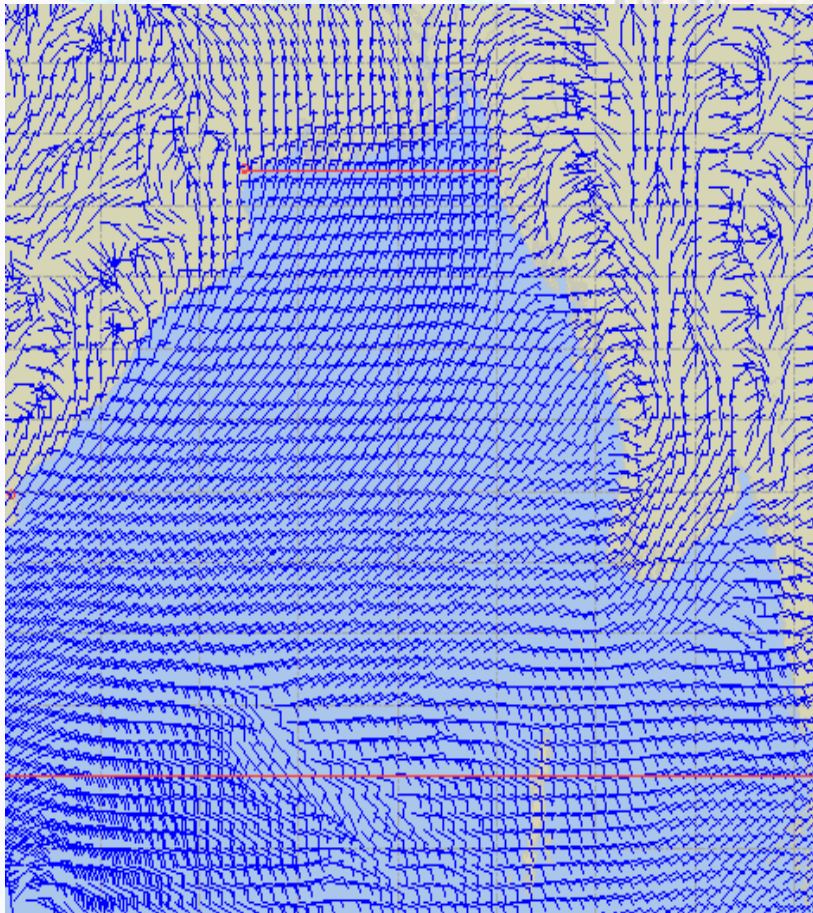
60 Knots



Surface Wind Forecast – 24 & 25 Nov- 2020

24 Nov 20 Tuesday

25 Nov 20 Wednesday



Legend:



Calm
Winds



5 Knots



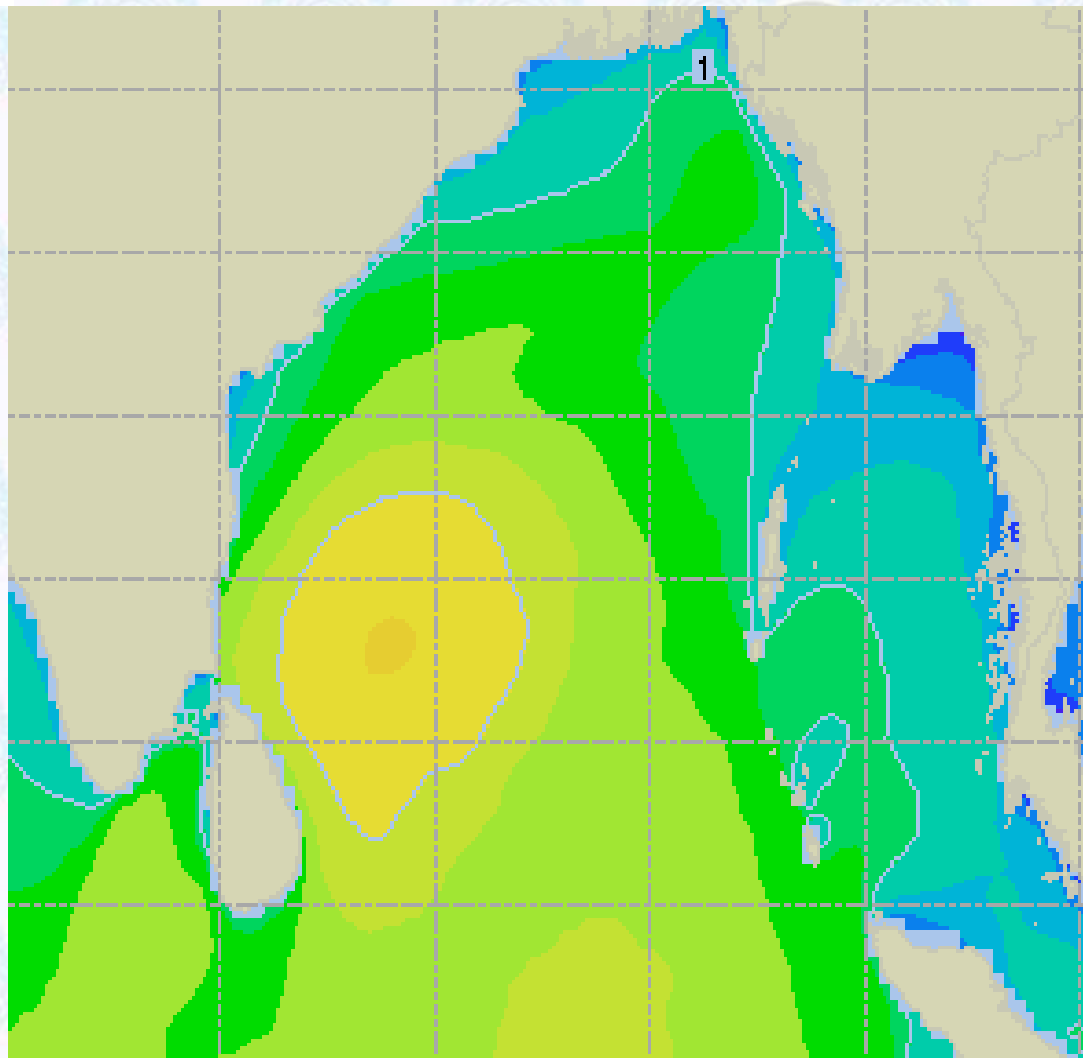
10 Knots



60 Knots



Sea State Forecast – 23 Nov- 2020



Sea State	Ht (m)
0	0-0.1
1	0-0.1
2	0.1-0.5
3	0.5-1.25
4	1.25-2.5
5	2.5-4.0
6	4-6
7	6-9
8	9-14
9	Over 14

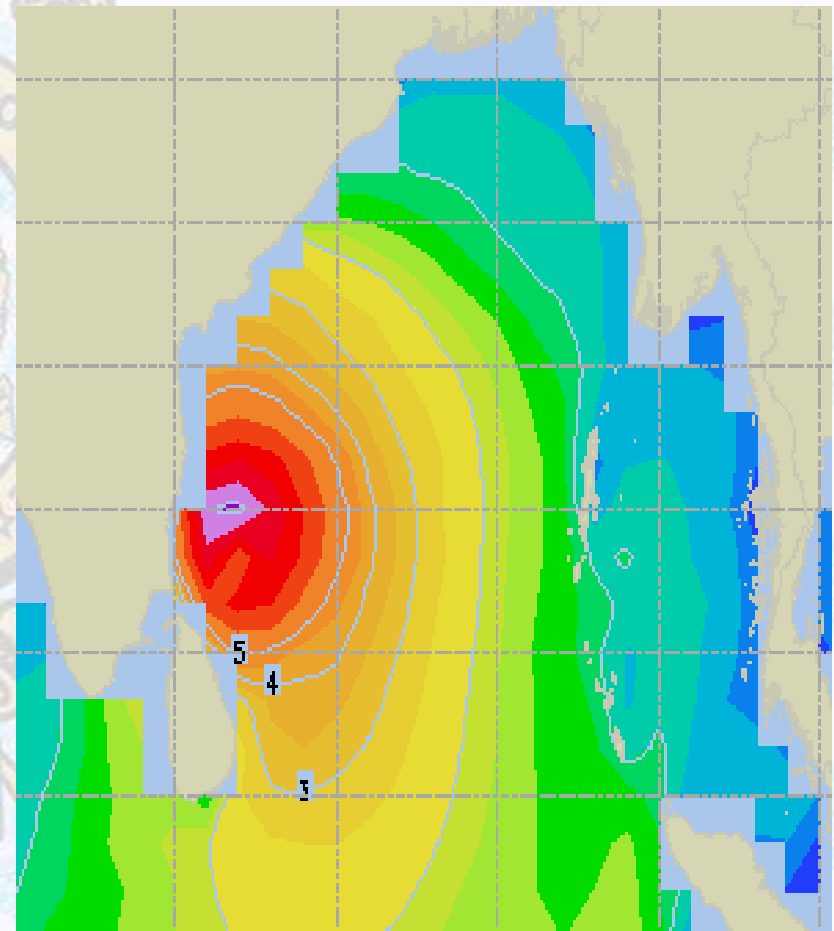
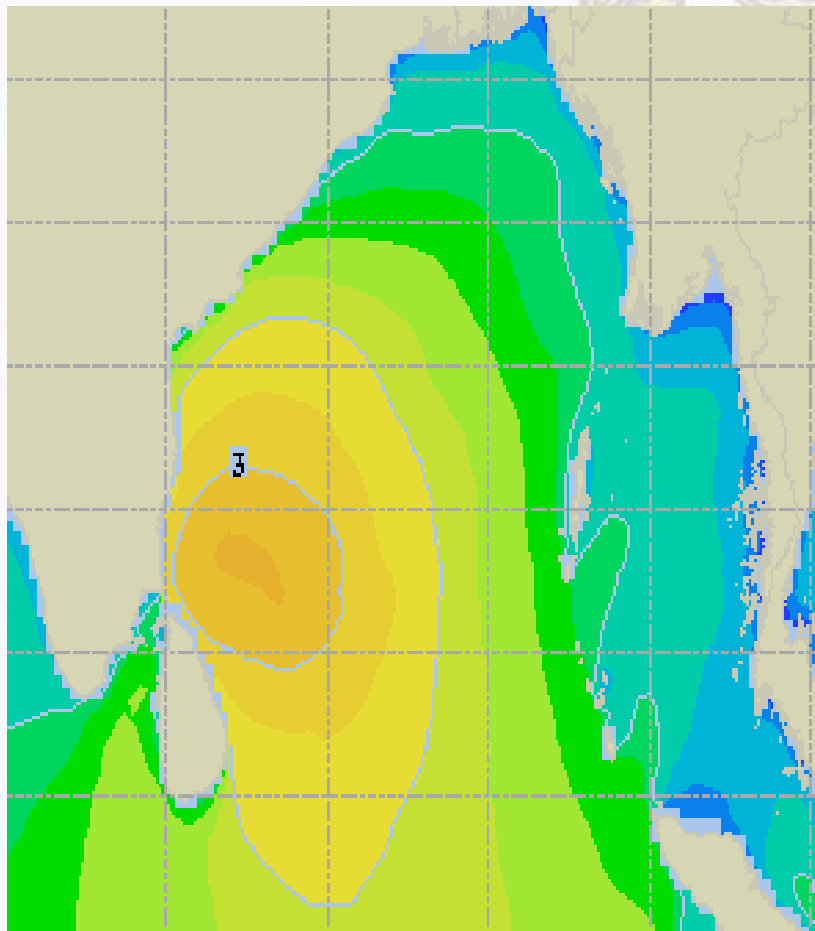




Sea State Forecast – 24 & 25 Nov- 2020

24 Nov 20 Tuesday

25 Nov 20 Wednesday

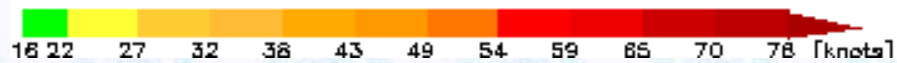
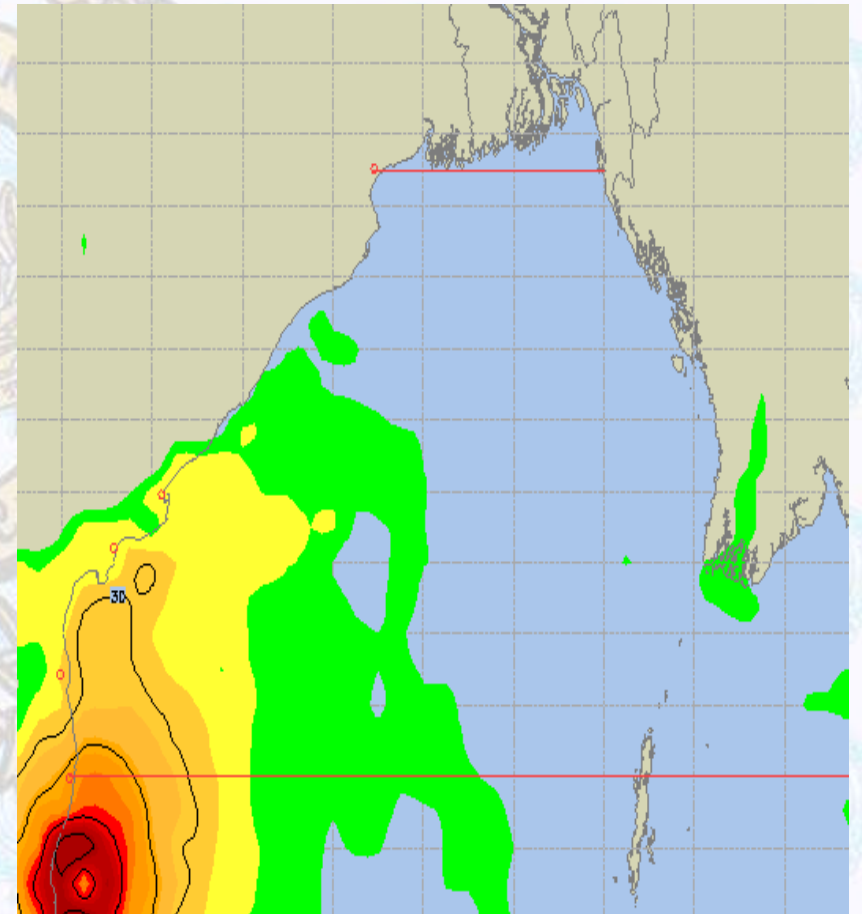
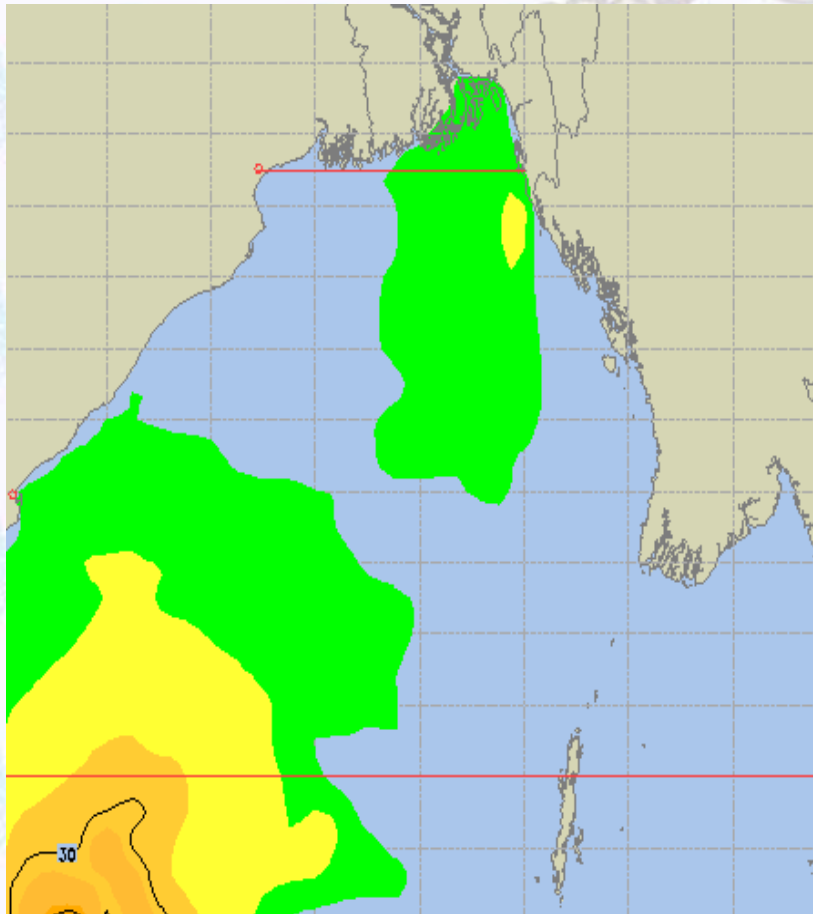




Peak Gusting Possibilities— 23 & 24 Nov 2020

23 Nov 20 Monday

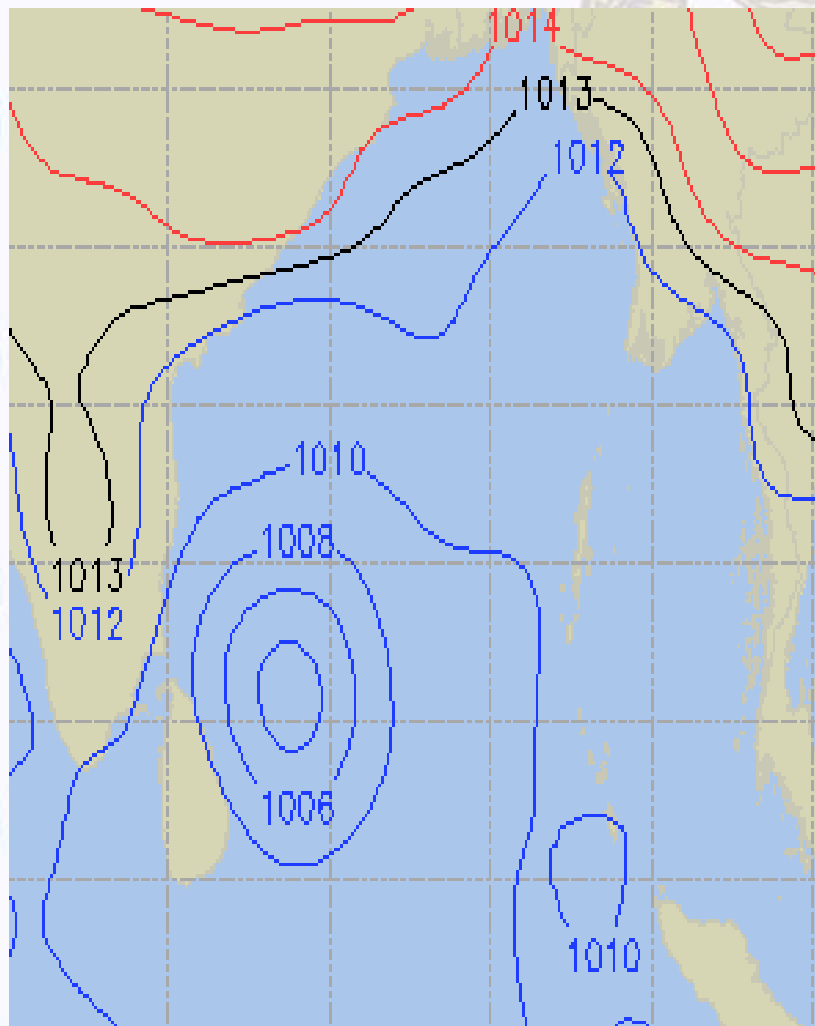
24 Nov 20 Tuesday



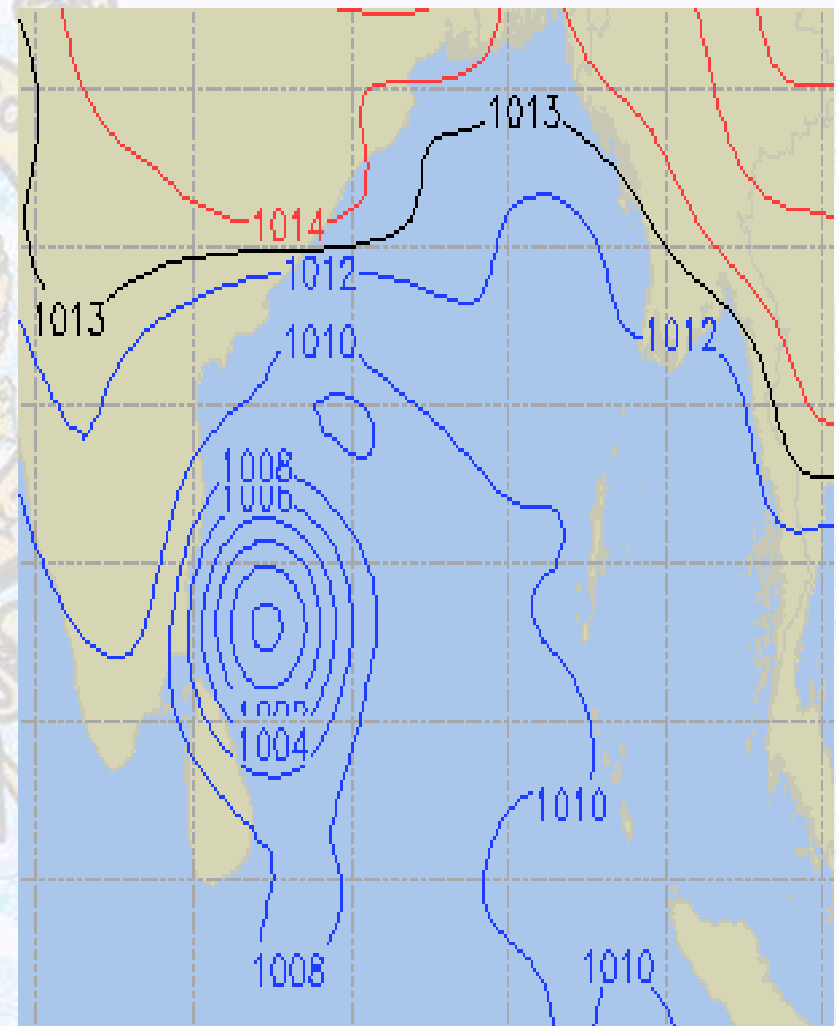


Surface Pressure forecast– 23 & 24 Nov 2020

23 Nov 20 Monday



24 Nov 20 Tuesday

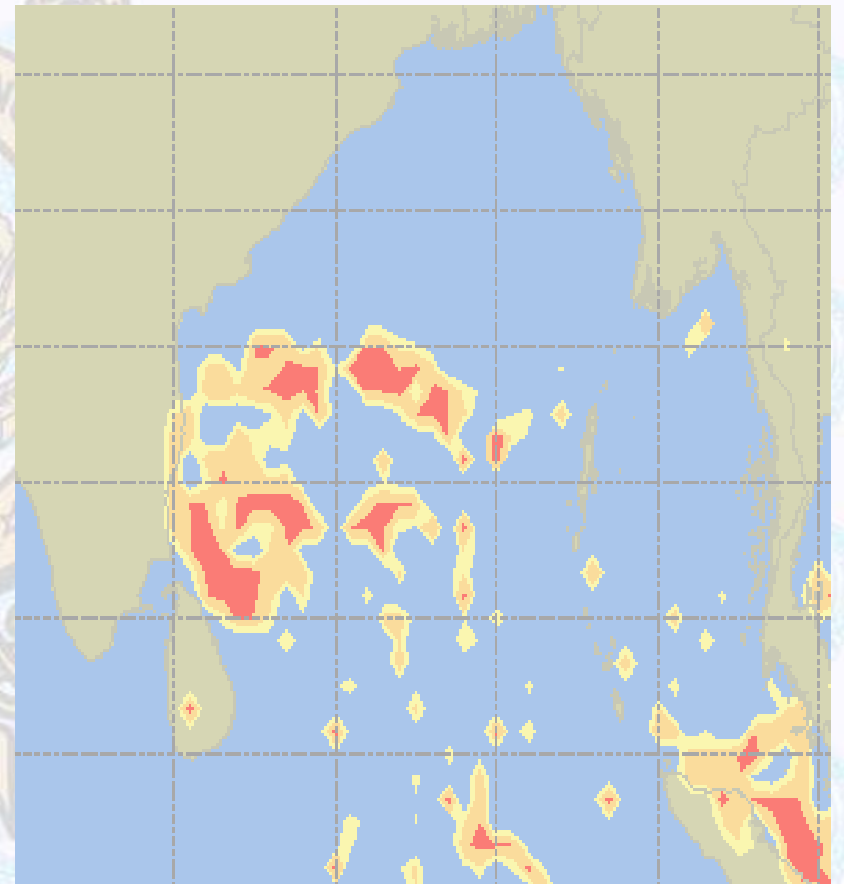
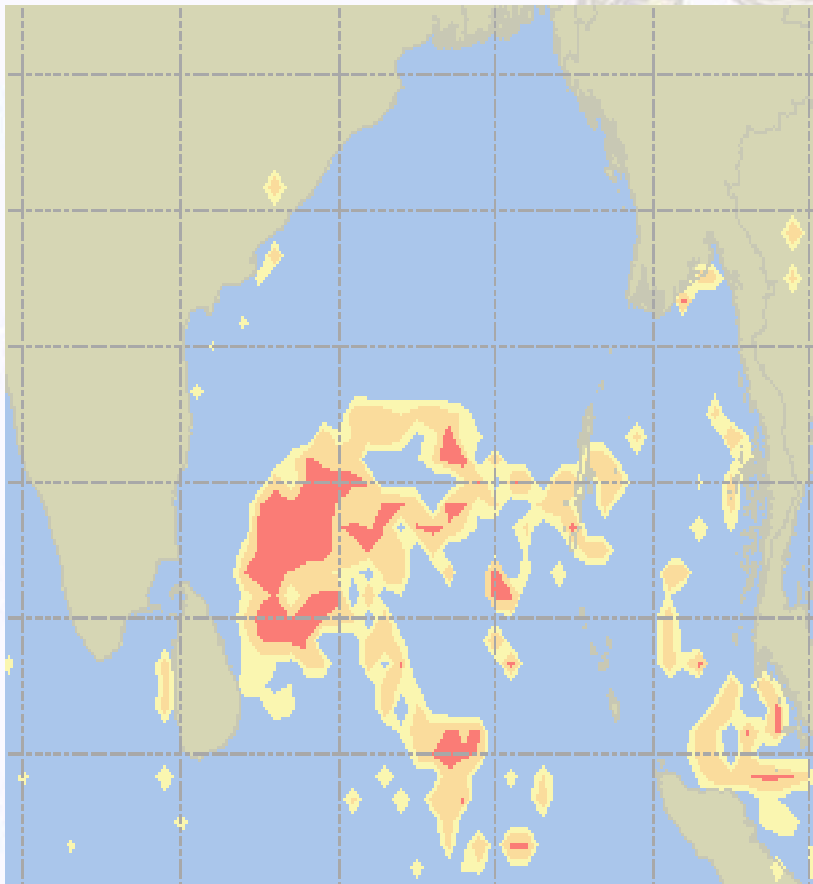




Visibility at Sea Forecast – 23 & 24 Nov 2020

23 Nov 20 Monday

24 Nov 20 Tuesday



Visibility Scale:



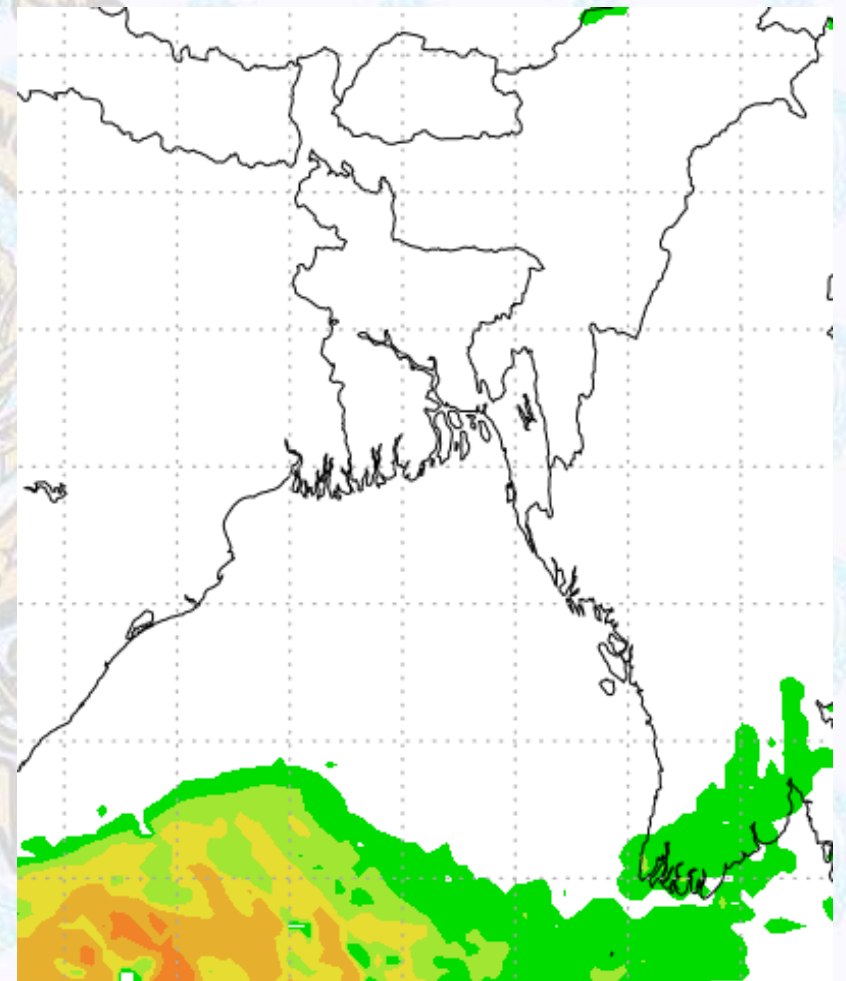
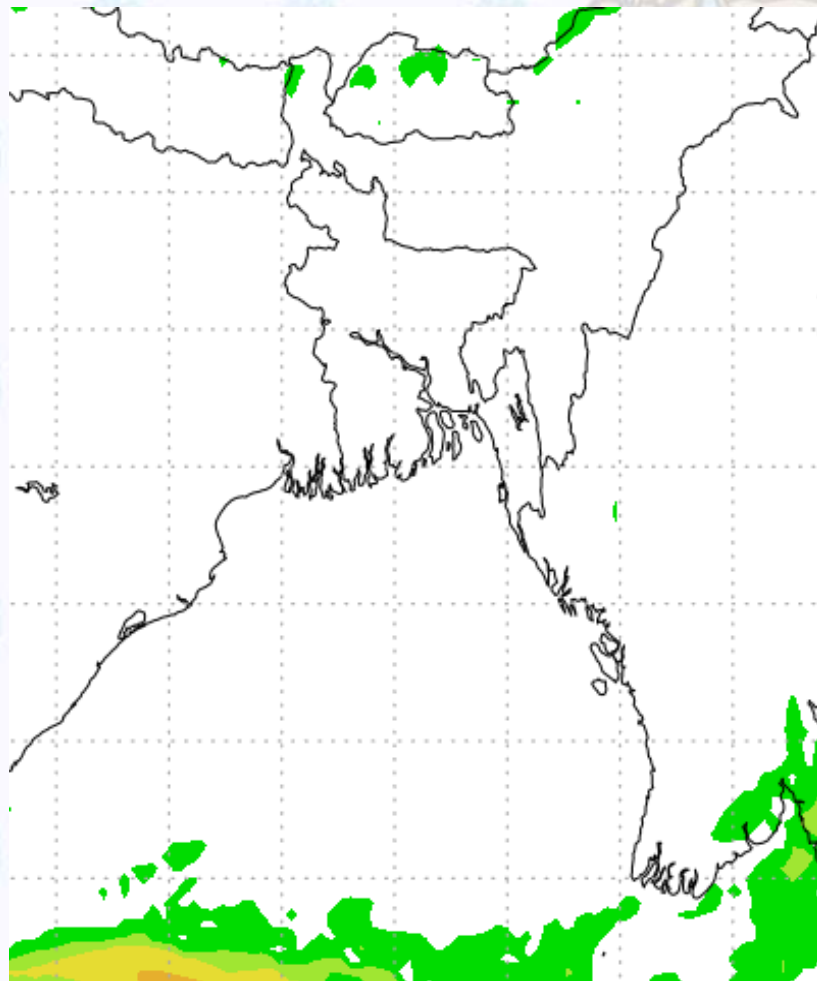
Ref (Slide 12-18): <http://www.weatheronline.co.uk/marine/weather?LEVEL>



Precipitation

Rain(mm) 23 & 24 Nov 2020

Rain(mm) 24 & 25 Nov 2020



Precipitation Scale (mm):





Tidal Information

KHAL NO. 10

COX'S BAZAR

HIRAN POINT

	Time	Height		Time	Height		Time	Height
		0124		1.50			0436	2.58
23 Nov 2020	0728	3.75		1136	1.21		1134	1.26
	1413	1.08		1741	2.43		1758	2.34
	2035	3.72		-	-		2357	1.46
	Time	Height		Time	Height		Time	Height
		0249		1.44			0008	1.28
24 Nov 2020	0848	3.70		0600	2.51		1240	1.19
	1519	1.01		1250	1.18		1910	2.47
	2142	3.91		1859	2.55		-	-
	Time	Height		Time	Height		Time	Height
		0359		1.24			0122	1.22
25 Nov 2020	0954	3.76		0713	2.55		0715	2.48
	1615	0.92		1348	1.10		1335	1.09
	2234	4.13		1954	2.74		2002	2.63