



# WEATHER FORECAST FOR BN

**13 - 16 NOV 2020**





# WEATHER FORECAST – DHAKA

## 13.11.2020

Hourly	2 PM	4 PM	8 PM	11 PM
Temp. / Dew Point	32 / 20	31 / 20	27 / 20	26 / 20
Wind	7 km/h N	8 km/h NNW	4 km/h NNW	5 km/h NNW
Humidity	50%	47%	67%	72%
Chance of Precip	1%	1%	3%	4%
Cloud Cover	1%	2%	1%	1%
Conditions	Sunny	Sunny	Clear	Clear
Sunrise	06: 12 AM			
Sunset	17: 13 PM			

### Conditions

Pressure : 1015 hpa

Visibility : 3.54 km

Ref: <https://www.wunderground.com/weather/bd/dhaka>





# WEATHER FORECAST – CHATTOGRAM

## 13.11.2020

Hourly	2 PM	4 PM	8 PM	11 PM
Temp. / Dew Point	31 / 25	30 / 25	27 / 25	26 / 24
Wind	7 km/h WNW	7 km/h WNW	5 km/h WNW	3 km/h NNW
Humidity	71%	73%	86%	89%
Chance of Precip.	1%	2%	6%	7%
Cloud Cover	12%	10%	4%	6%
Conditions	Sunny	Sunny	Clear	Clear
Sunrise	06: 05 AM			
Sunset	17: 11 PM			

### Conditions

Pressure : 1013 hpa

Visibility : 16.09 Km

Ref: <https://www.wunderground.com/weather/bd/chittagong>



# WEATHER FORECAST – KHULNA

## 13.11.2020

Hourly	2 PM	4 PM	8 PM	11 PM
Temp. / Dew Point	32 / 21	31 / 20	26 / 20	24 / 20
Wind	8 km/h N	9 km/h NNW	5 km/h NNW	5 km/h NNW
Humidity	51%	53%	70%	78%
Chance of Precip.	1%	1%	3%	4%
Cloud Cover	9%	7%	4%	1%
Conditions	Sunny	Sunny	Clear	Clear
Sunrise Sunset	06: 15 AM 17: 19 PM			

### Conditions

Pressure : 1015 hpa

Visibility : 12.87 Km

Ref: <https://www.wunderground.com/weather/bd/khulna>





# GENERAL WEATHER FORECAST – DHAKA

Description	14 Nov 2020	15 Nov 2020	16 Nov 2020
<b>Temperature (C)</b>	32 °C/ 20 °C	32 °C/ 20 °C	32 °C/ 20 °C
<b>Summary</b>	Sunny	Sunny	Sunny
<b>Sun Rise/Set</b>	6h13m00s/17h12m42s	6h13m48s/17h12m24s	6h14m30s/17h12m06s
<b>Day Length</b>	10h59m42s	10h58m36s	10h57m36s
<b>Moon Rise/ Set</b>	4:54 AM 4:40 PM	6:02 AM 5:28 PM	7:10 AM 6:19 PM
<b>Moon Phase/ illu</b>	Waning Crescent, 0%	New Moon, 0%	Waxing Crescent, 3%
<b>Nautical Twilight</b>	05:21, 18:04	05:21, 18:03	05:22, 18:03
<b>Civil Twilight</b>	05:48, 17:36	05:49, 17:36	05:49, 17:36
<b>Humidity</b>	D : 58% N : 77%	D : 60% N : 75%	D : 58% N : 75%
<b>Barometer (mb)</b>	1012	1012	1012
<b>Visibility</b>	Good	Good	Good
<b>Precip Chance</b>	10%	10%	10%
<b>Wind (mph)</b>	8 Km/h NNW	7 Km/h NNW	7 Km/h NW

Ref: <https://weather.com/weather/5day//BGXX0003:1:BG>



# GENERAL WEATHER FORECAST– CHATTOGRAM

Description	14 Nov 2020	15 Nov 2020	16 Nov 2020
<b>Temperature (C)</b>	32 °C/ 21 °C	31 °C/ 22 °C	31 °C/ 21 °C
<b>Summary</b>	Sunny	Sunny	Sunny
<b>Sun Rise/Set</b>	6h04m54s/17h09m30s	6h05m42s/17h09m12s	6h06m24s/17h08m54s
<b>Day Length</b>	11h04m36s	11h03m30s	11h02m30s
<b>Moon Rise/ Set</b>	4:47 AM 4:36 PM	5:54 AM 5:24 PM	7:02 AM 6:16 PM
<b>Moon Phase/ illu</b>	Waning Crescent, 0%	New Moon, 0%	Waxing Crescent, 3%
<b>NauticalTwilight</b>	05:14 18:00	05:14 18:00	05:14 17:59
<b>Civil Twilight</b>	05:41, 17:33	05:41, 17:33	05:42, 17:32
<b>Humidity</b>	D : 75% N : 89%	D : 74% N : 90%	D : 73% N : 88%
<b>Barometer (mb)</b>	1012	1012	1012
<b>Visibility</b>	Good	Good	Good
<b>Precip Chance</b>	10%	10%	10%
<b>Wind (mph)</b>	8 Km/h NNW	7 Km/h NNW	7 Km/h NNW

Ref: <https://weather.com/weather/5day//BGXX0002:1:BG>





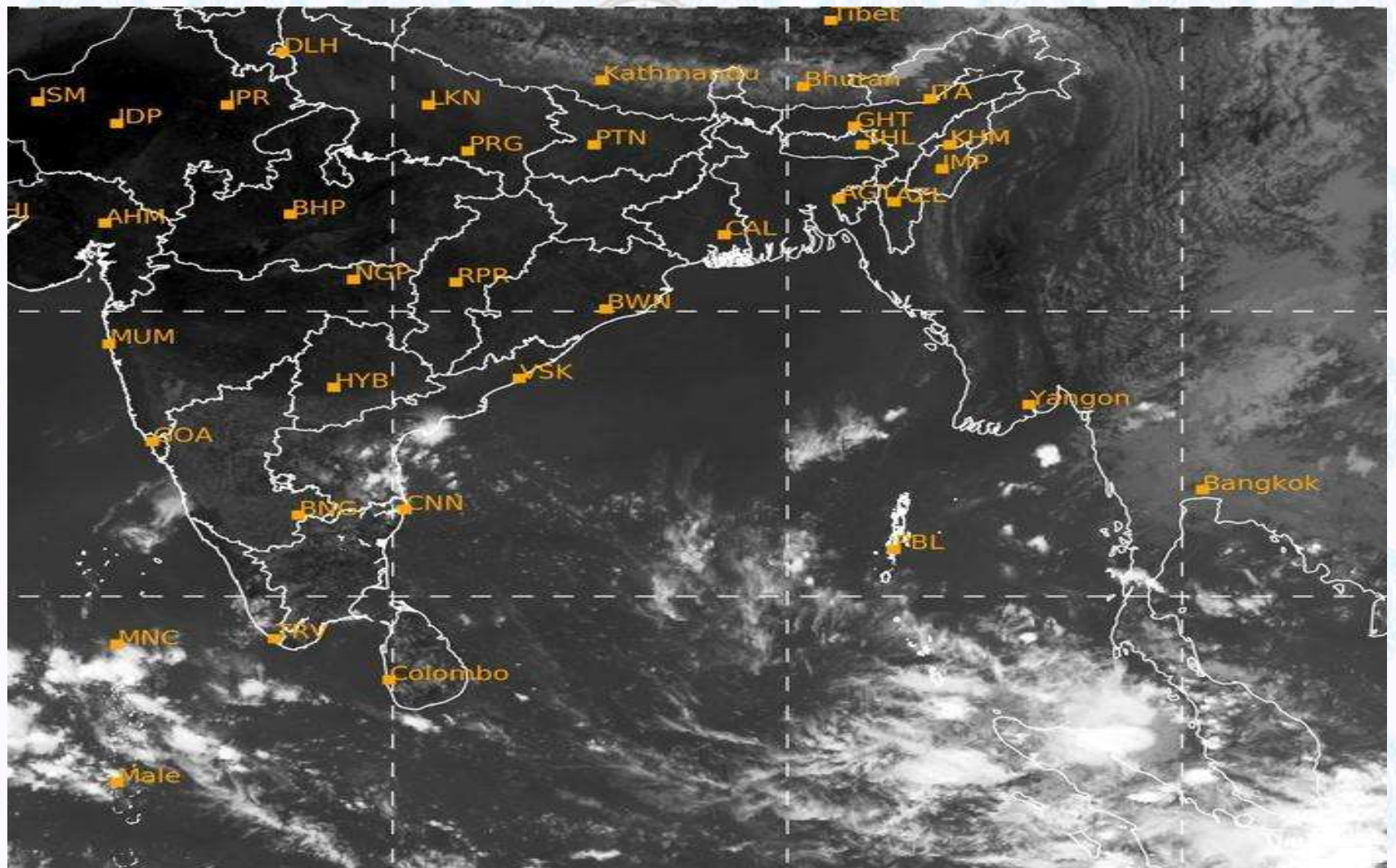
# GENERAL WEATHER FORECAST – KHULNA

Description	14 Nov 2020	15 Nov 2020	16 Nov 2020
<b>Temperature(C)</b>	32°C/ 20°C	32°C/ 19°C	32°C/ 19°C
<b>Summary</b>	Sunny	Sunny	Sunny
<b>Sun Rise/Set</b>	6h14m48s/17h17m48s	6h15m36s/17h17m30s	6h16m18s/17h17m06s
<b>Day Length</b>	11h03m00s	11h01m54s	11h00m48s
<b>Moon Rise/Set</b>	4:57 AM 4:45 PM	6:04 AM 5:33 PM	7:12 AM 6:24 PM
<b>Moon Phase/illu</b>	Waning Crescent, 0%	New Moon, 0%	Waxing Crescent, 3%
<b>NauticalTwilight</b>	05:23, 18:08	05:24, 18:08	05:24, 18:08
<b>Civil Twilight</b>	05:50, 17:41	05:51, 17:41	05:51, 17:41
<b>Humidity</b>	D : 54% N : 73%	D : 57% N : 74%	D : 56% N : 71%
<b>Barometer (mb)</b>	1013	1012	1013
<b>Visibility</b>	Good	Good	Good
<b>Precip Chance</b>	1%	10%	10%
<b>Wind (mph)</b>	13 km/h NNW	11 km/h NNW	10 km/h NW

Ref: <https://weather.com/weather/5day//BGXX0005:1:BG>



# SATELLITE VIEW OF BAY OF BENGAL



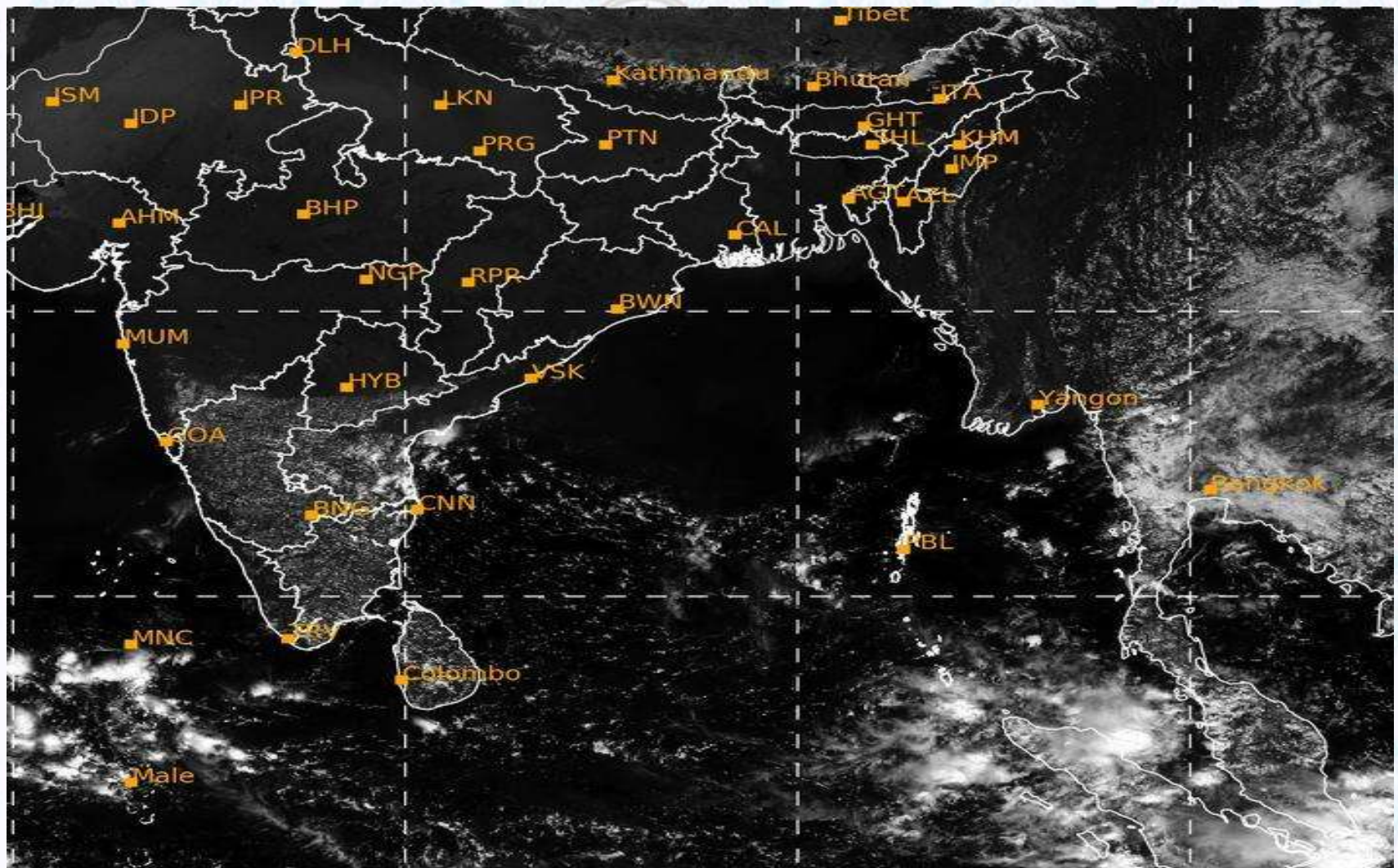
13/11/2020, 11:00 UTC MATSAT-IR

Ref: <http://satellite.imd.gov.in/insat.htm>





# SATELLITE VIEW OF BAY OF BENGAL



13/11/2020, 11:00 MATSAT-VIS

Ref: <http://satellite.imd.gov.in/insat.htm>



# Fleet Forecast Sea Area C-90 ( Valid for 12 Hrs Commencing 1000 UTC of 13.11.2020)

<b>Part One</b>	NO STORM WARNING.	
<b>Part Two</b>	SEASONAL LOW OVER SOUTH BAY, EXTENDING ITS TROUGH TO NORTH BAY.	
<b>Part Three</b>	Weather	TEMPORARY PARTLY CLOUDY OVER AREA C-90.
	Wind	NORTH/NORTH-EASTERLY 08-12 KTS.
	Visibility	(03-05) KMS, REDUCING TO 1500 M OR LESS IN MIST/HAZE.
	Outlook	FOR SUBSEQUENT 12 HOURS: LITTLE CHANGE.
	MSL Pressure	AT = 13,0000 UTC. CHATTOGRAM =1013 HPA





# Inland River Port Warning (VALID TILL 06 PM OF 13.11.2020)

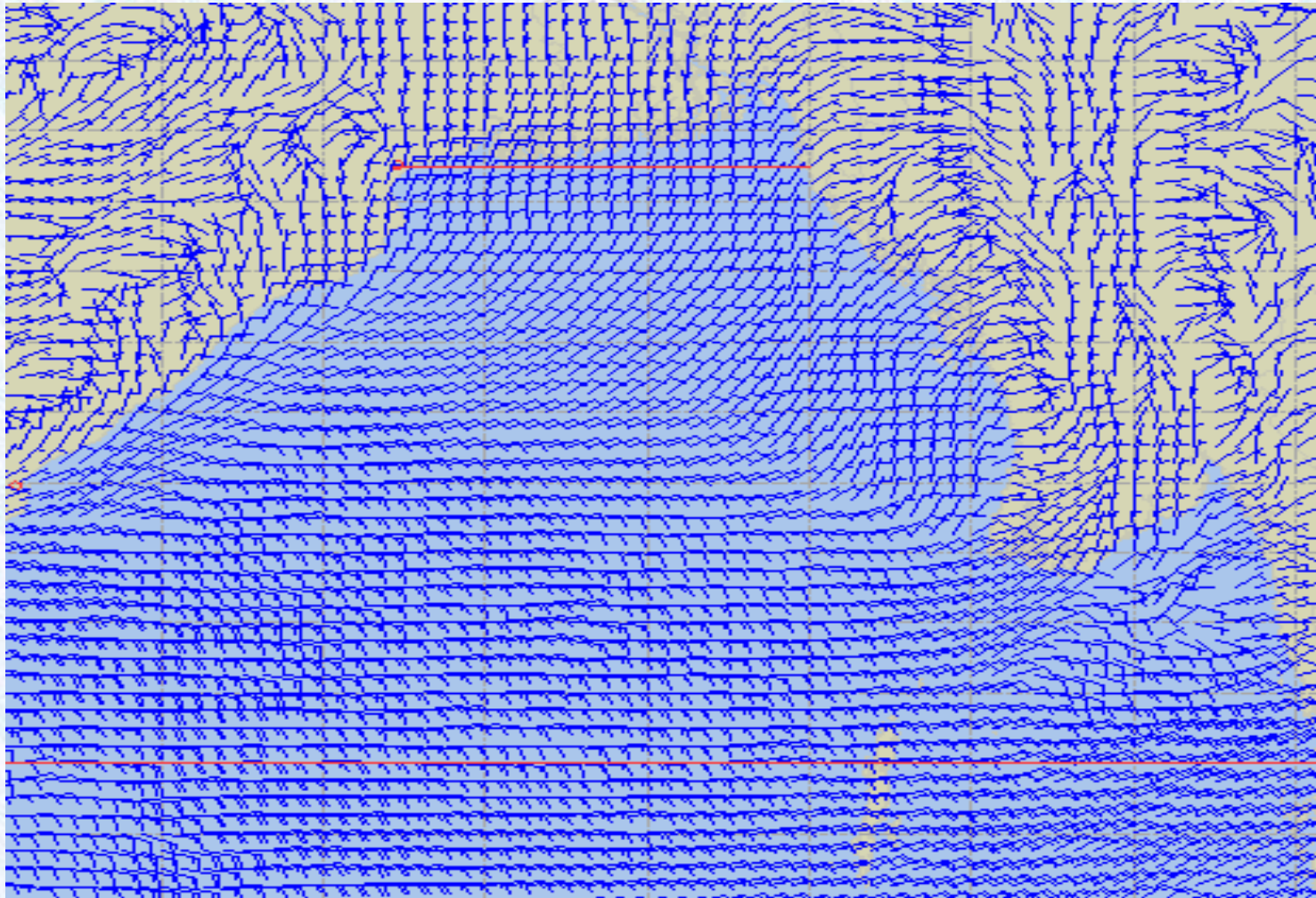
THERE IS NO INLAND RIVERPORTS WARNING AND NO SIGNAL IS TO BE HOISTED.



Ref: <http://www.bmd.gov.bd/?/home>



# Surface Wind Forecast- 14 Nov - 2020



**Legend:**



**Calm  
Winds**



**5 Knots**



**10 Knots**



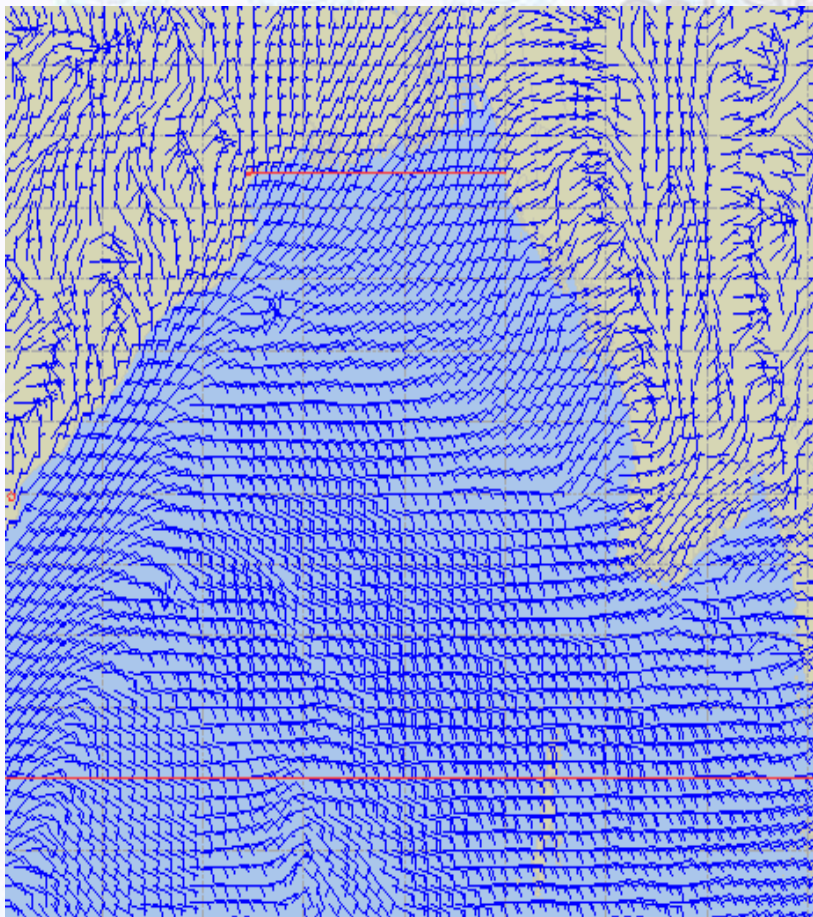
**60 Knots**



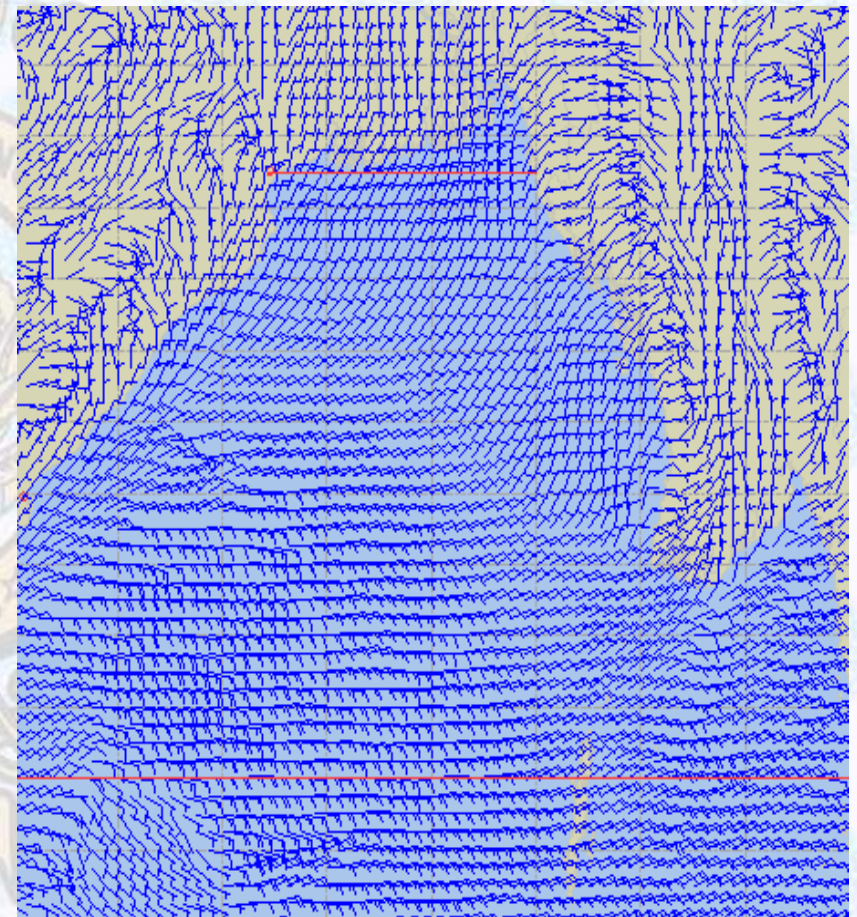


# Surface Wind Forecast – 15 & 16 Nov- 2020

15 Nov 20 Sunday



16 Nov 20 Monday



**Legend:**



Calm  
Winds



5 Knots



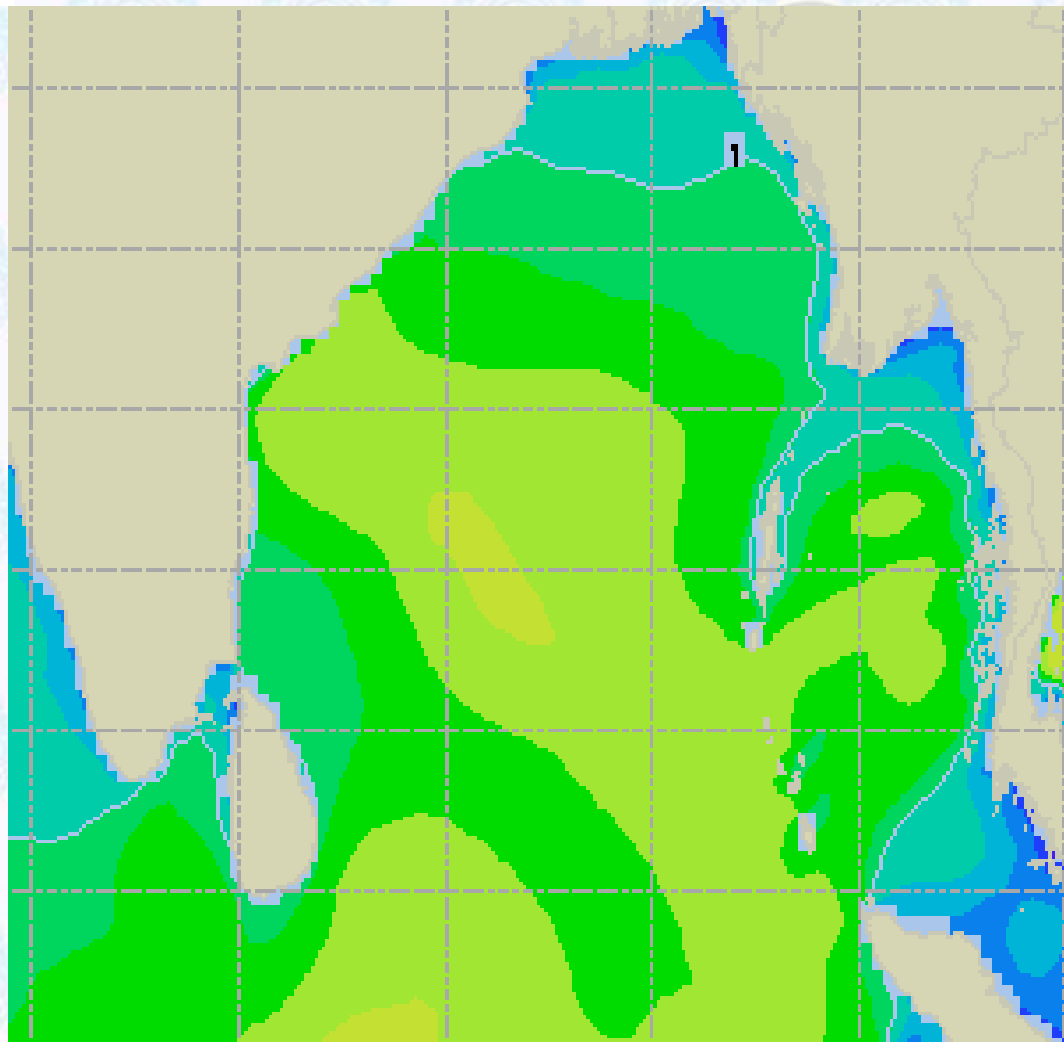
10 Knots



60 Knots



# Sea State Forecast – 14 Nov- 2020



Sea State	Ht (m)
0	0-0.1
1	0-0.1
2	0.1-0.5
3	0.5-1.25
4	1.25-2.5
5	2.5-4.0
6	4-6
7	6-9
8	9-14
9	Over 14



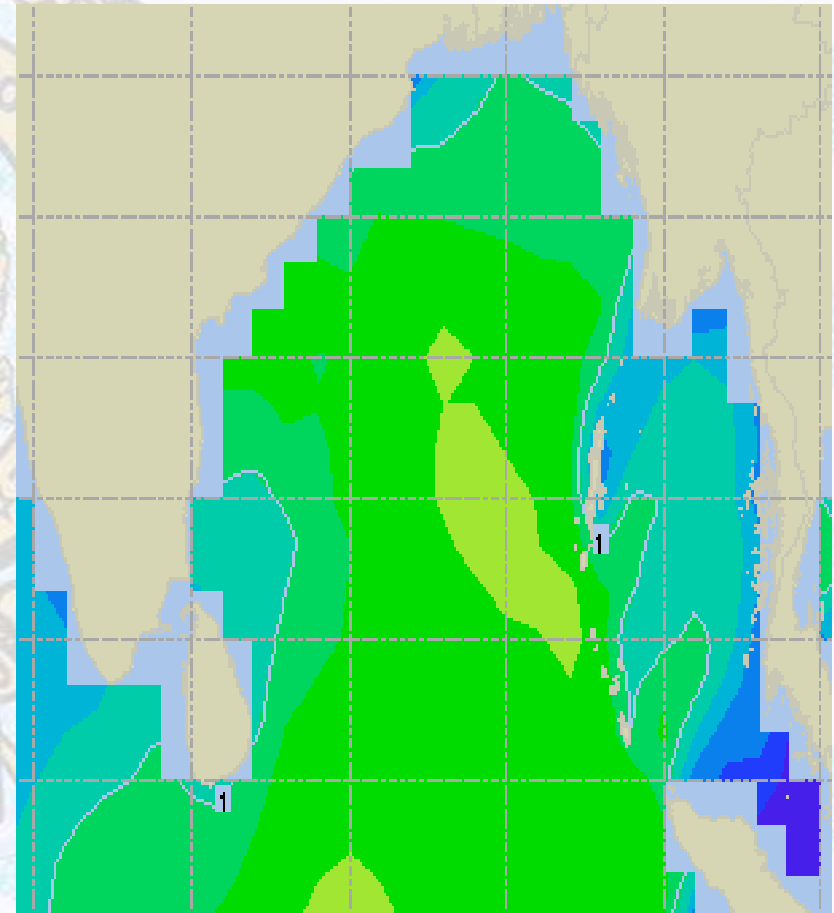
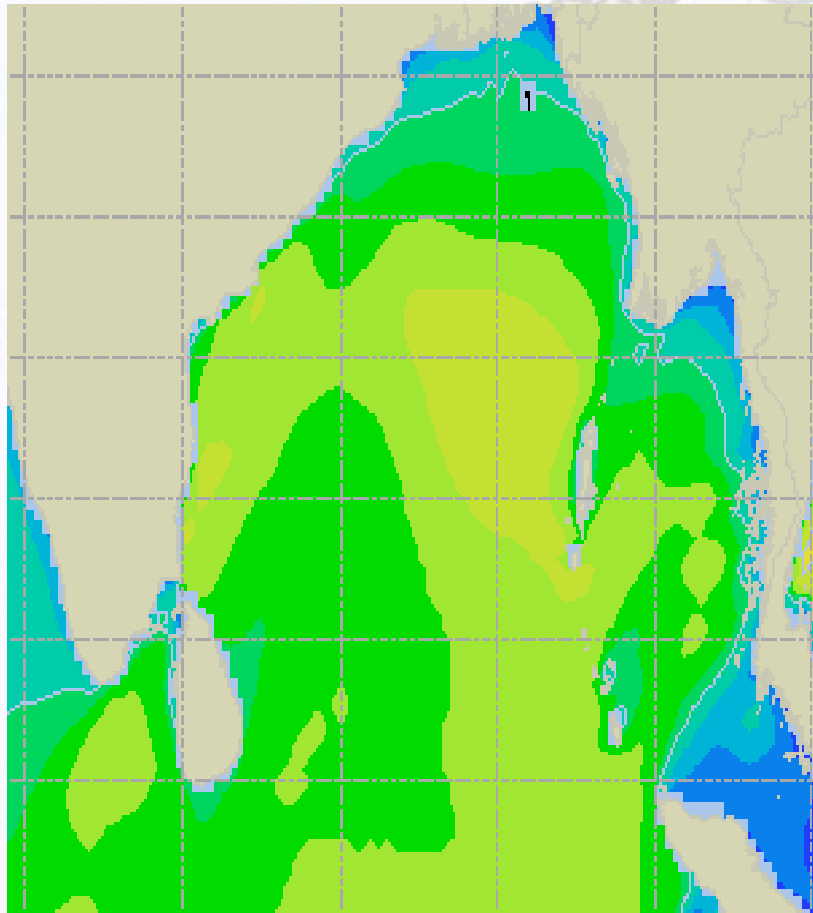




# Sea State Forecast – 15 & 16 Nov- 2020

15 Nov 20 Sunday

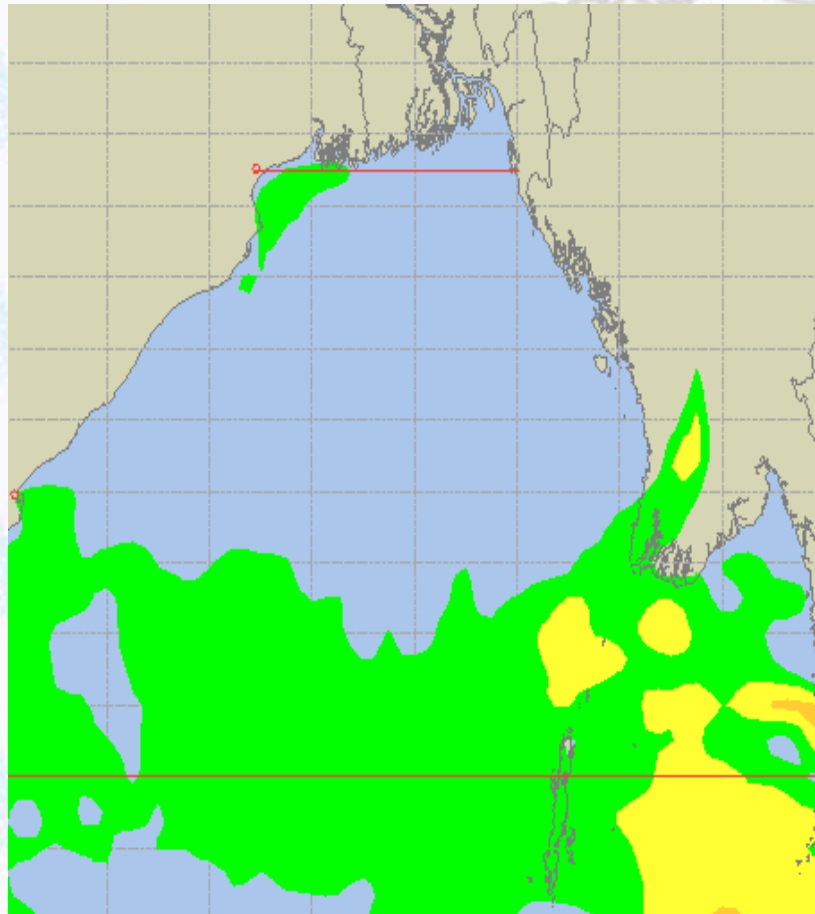
16 Nov 20 Monday



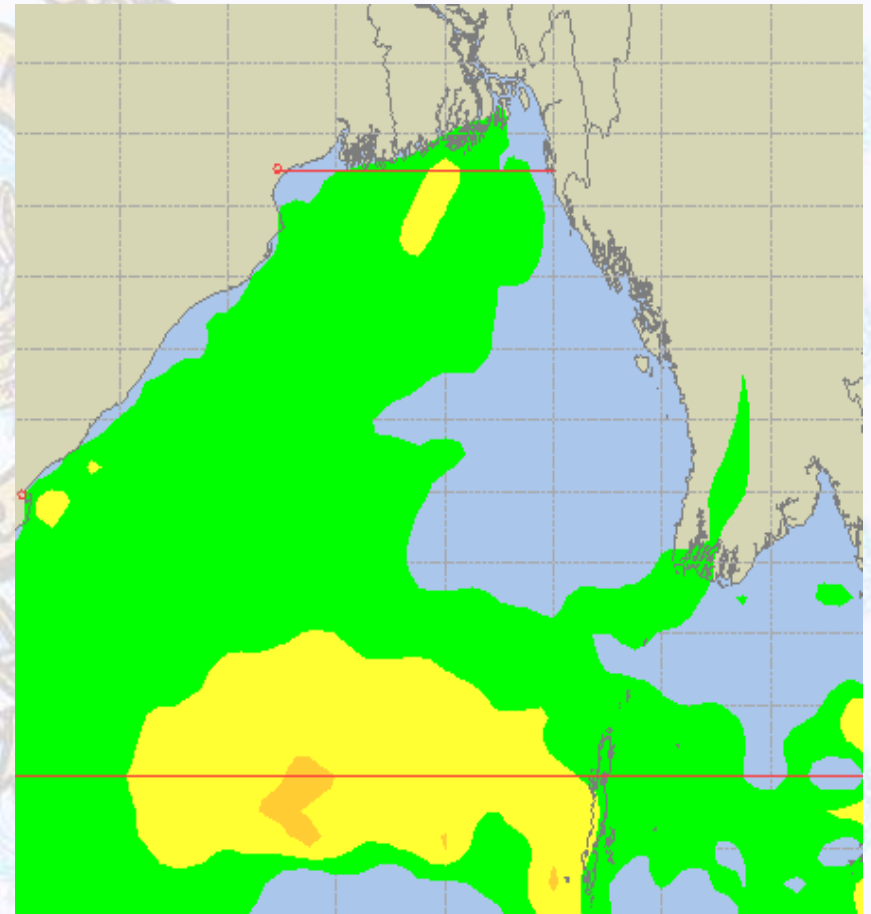


# Peak Gusting Possibilities— 14 & 15 Nov 2020

14 Nov 20 Saturday



15 Nov 20 Sunday

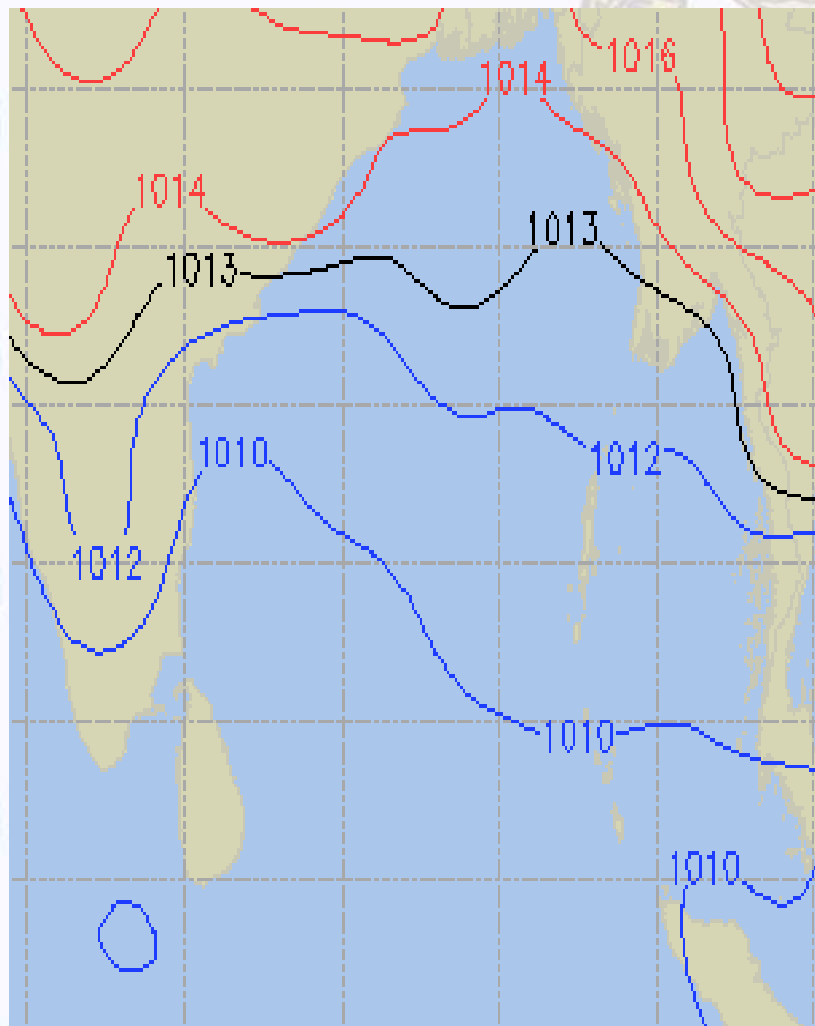




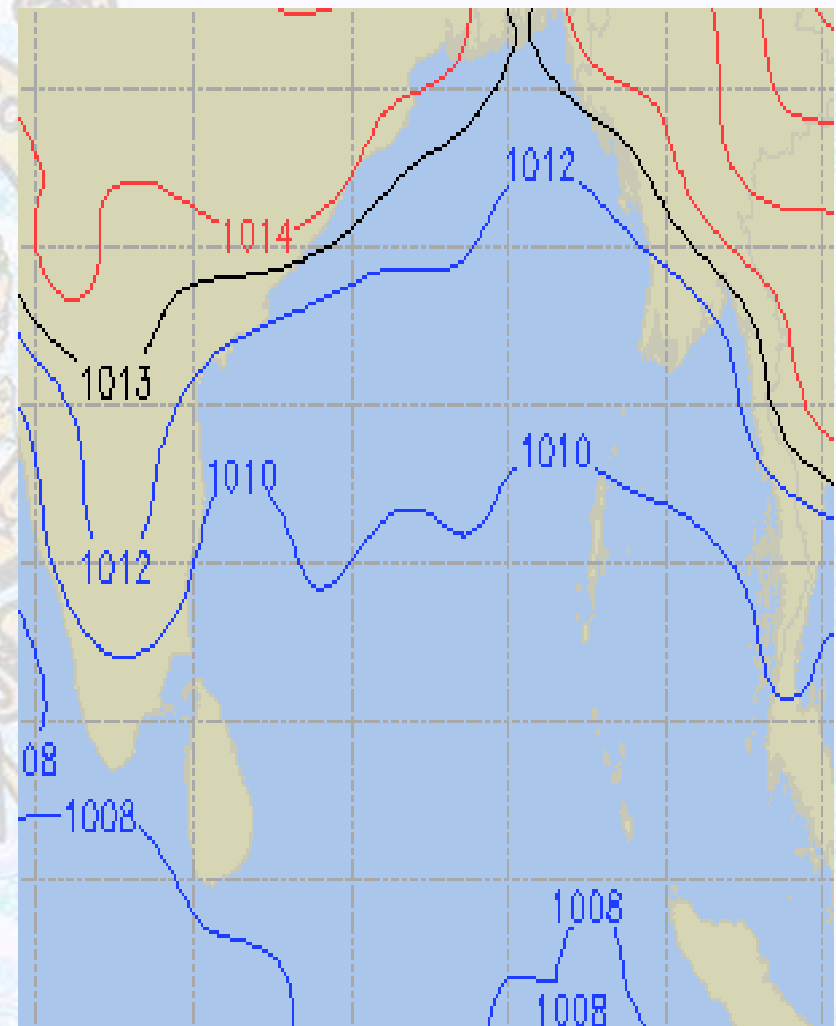


# Surface Pressure forecast– 14 & 15 Nov 2020

14 Nov 20 Saturday



15 Nov 20 Sunday

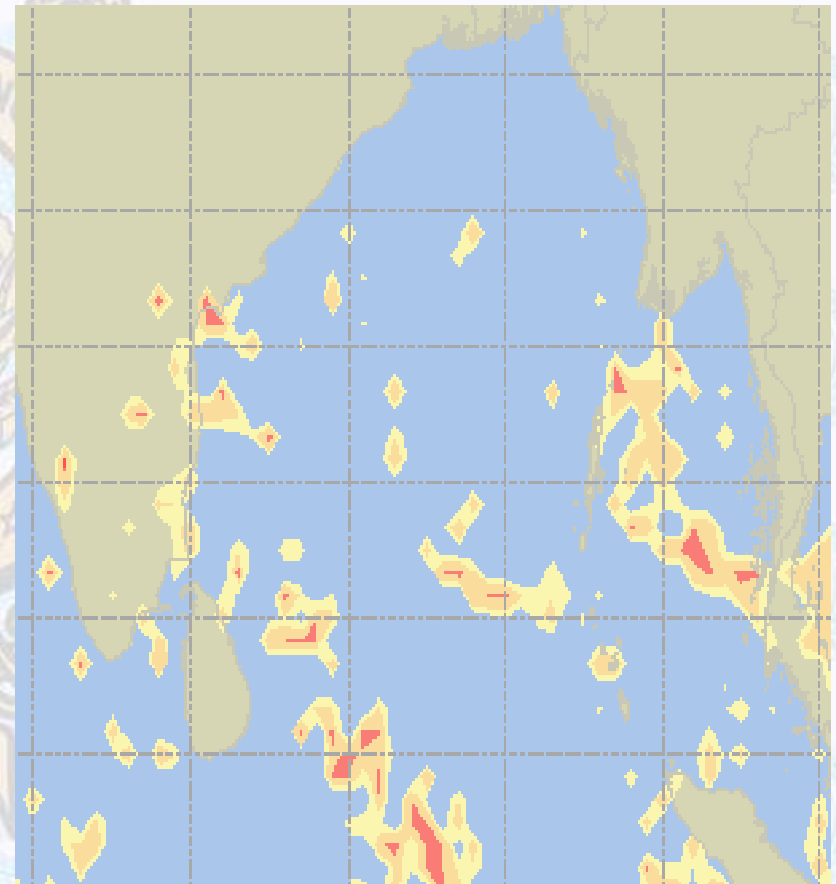
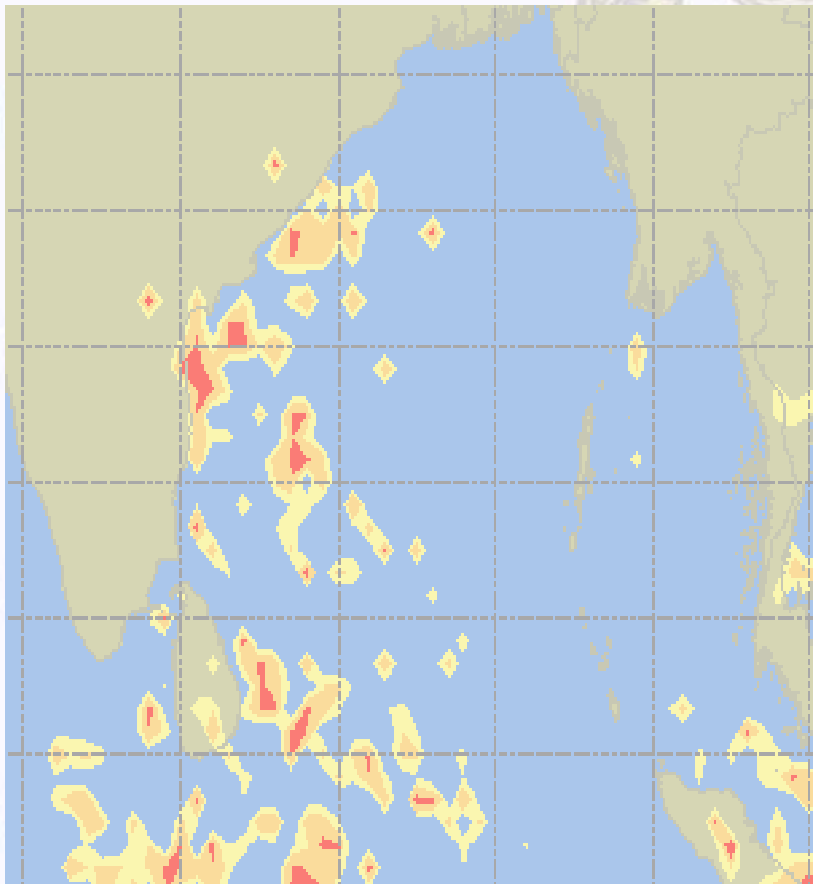




# Visibility at Sea Forecast – 14 & 15 Nov 2020

14 Nov 20 Saturday

15 Nov 20 Sunday



**Visibility Scale:**



Ref (Slide 12-18): <http://www.weatheronline.co.uk/marine/weather?LEVEL>

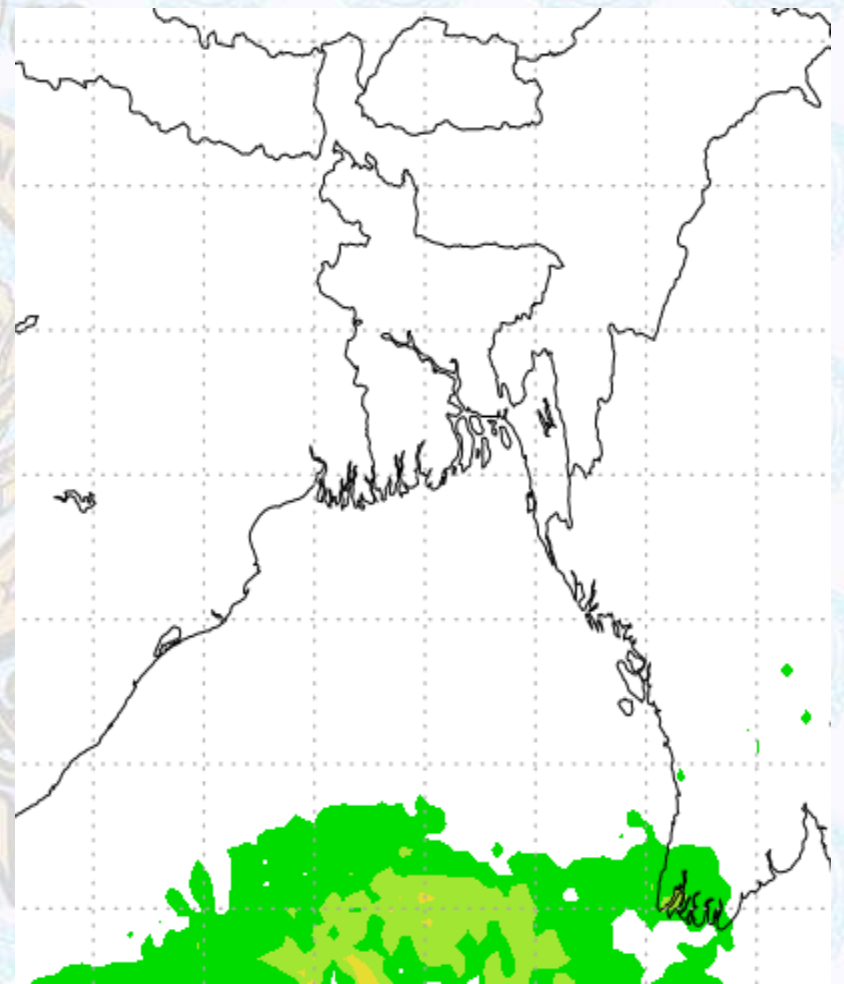
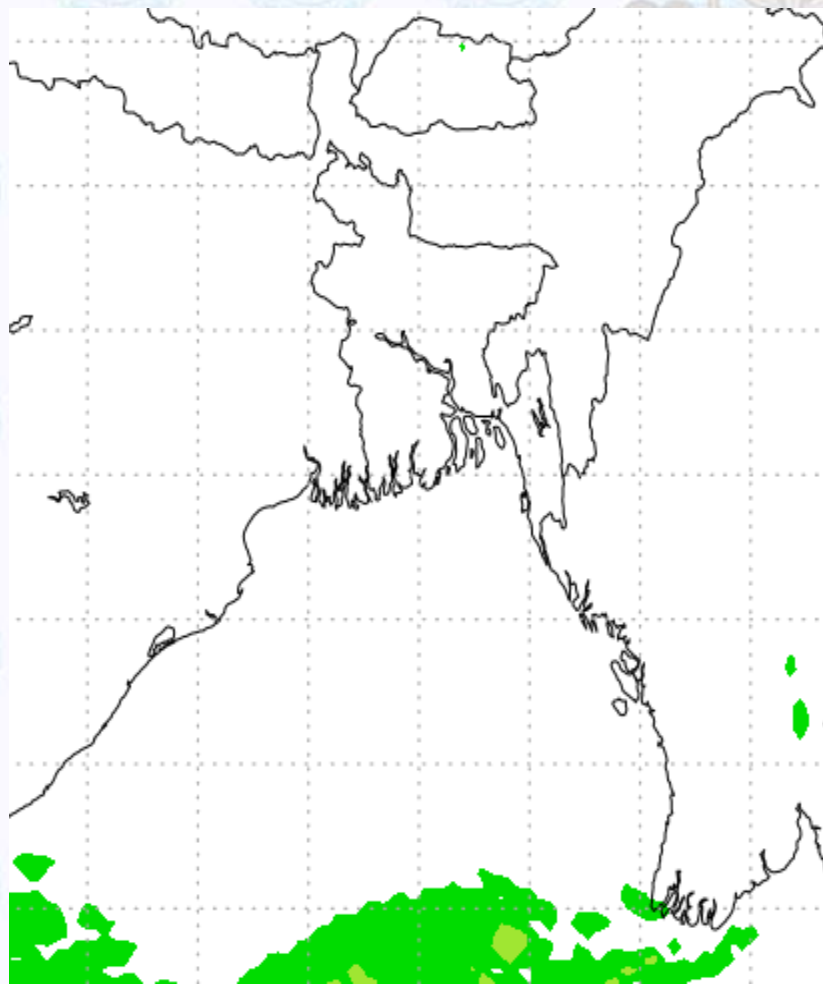




# Precipitation

Rain(mm) 14 & 15 Nov 2020

Rain(mm) 15 & 16 Nov 2020



Precipitation Scale (mm):





# Tidal Information

## KHAL NO. 10

## COX'S BAZAR

## HIRAN POINT

<b>14 Nov 2020</b>	<b>Time</b>	<b>Height</b>		<b>Time</b>	<b>Height</b>		<b>Time</b>	<b>Height</b>
	0623	0.48		0401	0.64		0343	0.74
	1203	4.64		0935	3.43		0935	3.04
	1836	0.33		1616	0.52		1555	0.49
	-	-		2159	3.84		2202	3.38
<b>15 Nov 2020</b>	<b>Time</b>	<b>Height</b>		<b>Time</b>	<b>Height</b>		<b>Time</b>	<b>Height</b>
	0026	5.09		0448	0.53		0429	0.63
	0707	0.35		1019	3.49		1020	3.06
	1246	4.69		1701	0.44		1638	0.45
	1918	0.28		2243	3.90		2244	3.40
<b>16 Nov 2020</b>	<b>Time</b>	<b>Height</b>		<b>Time</b>	<b>Height</b>		<b>Time</b>	<b>Height</b>
	0105	5.13		0532	0.49		0513	0.60
	0749	0.31		1103	3.47		1103	3.03
	1328	4.67		1745	0.43		1719	0.48
	1957	0.30		2326	3.85		2325	3.35