



WEATHER FORECAST FOR BN

19 - 22 APR 2020



WEATHER FORECAST – DHAKA

19.04.2020

Hourly	2 PM	4 PM	8 PM	11 PM
Temp. / Dew Point	34 / 25	33 / 25	27 / 24	26 / 24
Wind	16 km/h SSE	12 km/h SSE	13 km/h SSE	11 km/h SSW
Humidity	60%	65%	84%	86%
Chance of Precip	1%	81%	45%	18%
Cloud Cover	10%	75%	64%	60%
Conditions	Partly Cloudy	Partly Cloudy	Partly Cloudy	Partly Cloudy
Sunrise Sunset	5: 35 AM 6: 22 PM			

Conditions

Pressure : 1009 hpa

Visibility : 12.87 km

Ref: <https://www.wunderground.com/weather/bd/dhaka>



WEATHER FORECAST – CHATTOGRAM

19.04.2020

Hourly	2 PM	4 PM	8 PM	11 PM
Temp. / Dew Point	31 / 24	30 / 27	28 / 27	27 / 27
Wind	14 km/h SW	15 km/h SSW	12 km/h SSW	7 km/h S
Humidity	67%	81%	90%	95%
Chance of Precip.	1%	2%	9%	7%
Cloud Cover	34%	22%	36%	40%
Conditions	Sunny/Partly Cloudy	Sunny/Partly Cloudy	Sunny/Partly Cloudy	Sunny/Partly Cloudy
Sunrise Sunset	5: 30 AM 6: 15 PM			

Conditions

Pressure : 1011 hpa

Visibility : 9.66 Km

Ref: <https://www.wunderground.com/weather/bd/chittagong>



WEATHER FORECAST – KHULNA

19.04.2020

Hourly	2 PM	4 PM	8 PM	11 PM
Temp. / Dew Point	34 / 27	33 / 27	29 / 26	28 / 26
Wind	19 km/h S	18 km/h S	15 km/h S	13 km/h S
Humidity	66%	69%	85%	88%
Chance of Precip.	40%	5%	8%	6%
Cloud Cover	50%	30%	42%	59%
Conditions	Partly Cloudy	Partly Cloudy	Partly Cloudy	Partly Cloudy
Sunrise Sunset	5: 40 AM 6: 25 PM			

Conditions

Pressure : 1009 hpa

Visibility : 14.48 Km

Ref: <https://www.wunderground.com/weather/bd/khulna>



GENERAL WEATHER FORECAST – DHAKA

Description	20 Apr 2020	21 Apr 2020	22 Apr 2020
Temperature (C)	34 °C/ 24 °C	31 °C/ 24 °C	29 °C/ 24 °C
Summary	Partly Cloudy/Sunny	Partly Cloudy/Sunny	Partly Cloudy/Sunny
Sun Rise/Set	5h32m18s/18h21m54s	5h31m42s/18h23m00s	5h30m54s/18h23m36s
Day Length	12h49m36s	12h51m18s	12h52m42s
Moon Rise/ Set	4:08AM 4:09PM	4:40AM 4:58PM	5:12AM 5:48PM
Moon Phase/ illu	Waning Crescent, 5%	Waning Crescent, 1%	New Moon, 0%
NauticalTwilight	0443,1912	0441,1913	0440,1913
Civil Twilight	0510,1843	0508,1845	0507,1846
Humidity	D : 75% N : 89%	D : 81% N : 90%	D : 86% N : 91%
Barometer (mb)	1008	1008	1008
Visibility	Good	Good	Good
Precip Chance	80%	80%	80%
Wind (mph)	14 Km/h SSE	13 Km/h S	13 Km/h S

Ref: <https://weather.com/weather/5day//BGXX0003:1:BG>



GENERAL WEATHER FORECAST– CHATTOGRAM

Description	20 Apr 2020	21 Apr 2020	22 Apr 2020
Temperature (C)	31°C/ 24°C	30°C/ 24°C	28°C/ 23°C
Summary	Partly Cloudy/Sunny	Partly Cloudy/Sunny	Partly Cloudy/Sunny
Sun Rise/Set	5h28m00s/18h13m36s	5h27m42s/18h15m42s	5h27m00s/18h16m12s
Day Length	12h46m36s	12h48m00s	12h49m12s
Moon Rise/ Set	4:08AM 4:09PM	4:34AM 4:52PM	5:06AM 5:41PM
Moon Phase/ illu	Waning Crescent, 5%	Waning Crescent, 1%	New Moon, 0%
NauticalTwilight	0439, 1903	0437, 1905	0436, 1904
Civil Twilight	0506, 1836	0504, 1838	0504, 1838
Humidity	D : 81% N : 96%	D : 85% N : 95%	D : 90% N : 95%
Barometer (mb)	1010	1010	1010
Visibility	Good	Good	Good
Precip Chance	40%	60%	60%
Wind (mph)	14 Km/h SSW	12 Km/h SSW	14 Km/h S

Ref: <https://weather.com/weather/5day//BGXX0002:1:BG>



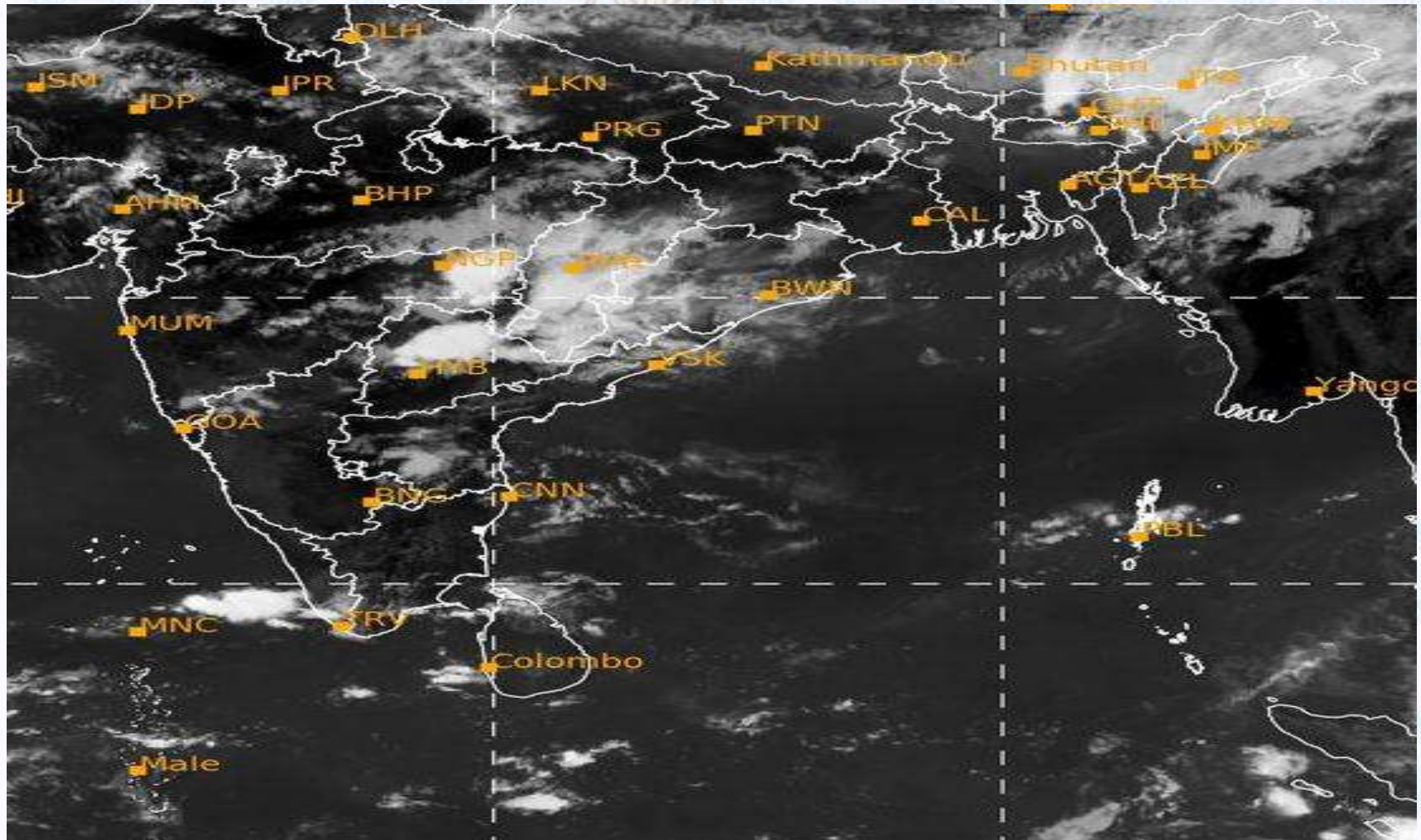
GENERAL WEATHER FORECAST – KHULNA

Description	20 Apr 2020	21 Apr 2020	22 Apr 2020
Temperature(C)	34°C/ 25°C	32°C/ 24°C	31°C/ 24°C
Summary	Partly cloudy /Sunny	Partly cloudy /Sunny	Partly cloudy /Sunny
Sun Rise/Set	5h36m42s/18h23m12s	5h36m18s/18h25m24s	5h35m30s/18h25m54s
Day Length	12h48m30s	12h49m06s	12h50m24s
Moon Rise/Set	4:08AM 4:09PM	4:44AM 5:02PM	5:17AM 5:52PM
Moon Phase/illu	Waning Crescent, 5%	Waning Crescent, 1%	New Moon, 0%
Nautical Twilight	0447, 1914	0446, 1913	0445, 1915
Civil Twilight	0514, 1847	0513, 1848	0512, 1848
Humidity	D : 76% N : 87%	D : 80% N : 90%	D : 84% N : 90%
Barometer (mb)	1008	1008	1008
Visibility	Good	Good	Good
Precip Chance	80%	80%	60%
Wind (mph)	15 km/h S	14 km/h S	14 km/h S

Ref: <https://weather.com/weather/5day//BGXX0005:1:BG>



SATELLITE VIEW OF BAY OF BENGAL

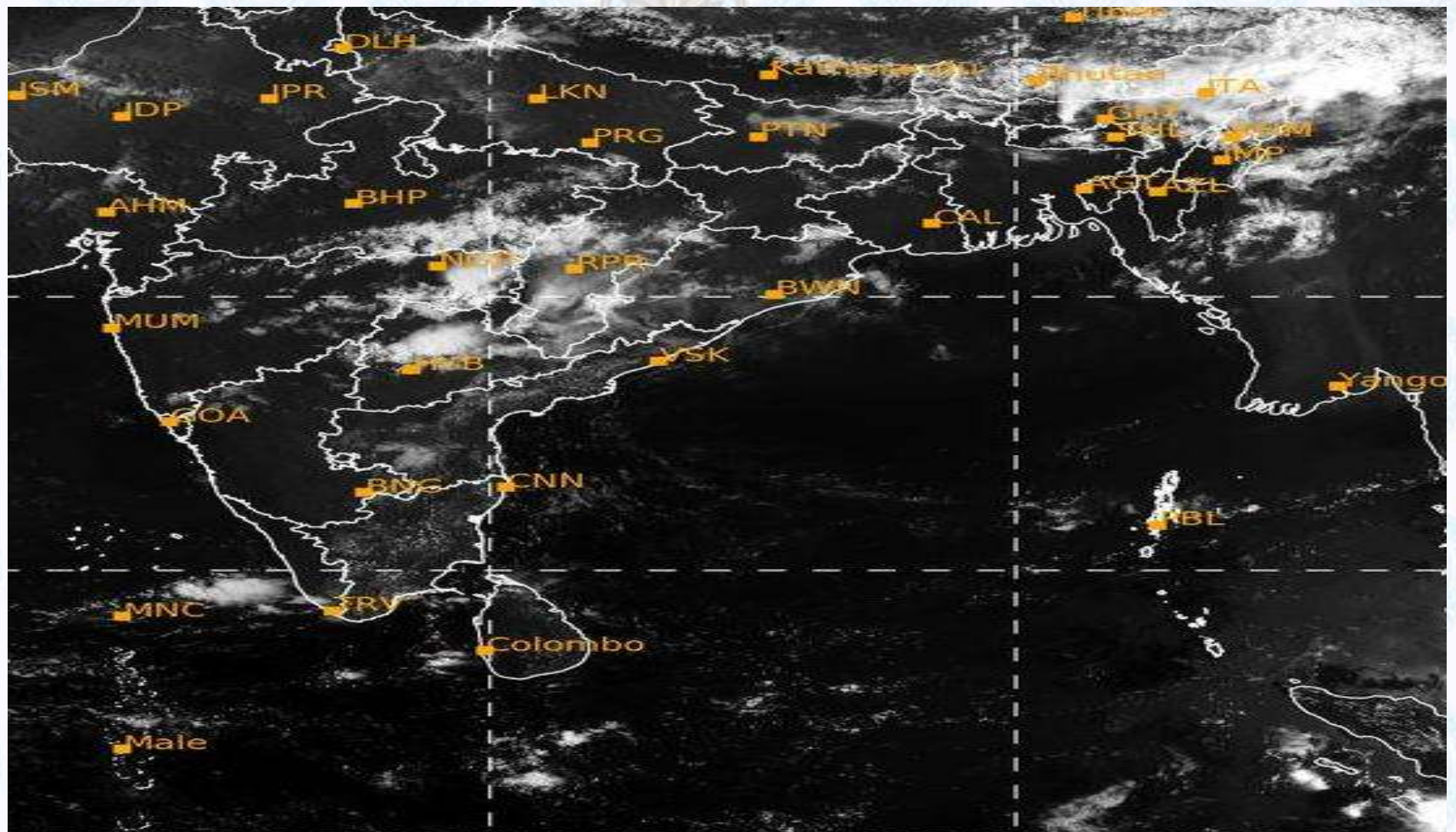


19/04/2020, 12:00 UTC MATSAT-IR

Ref: <http://satellite.imd.gov.in/insat.htm>



SATELLITE VIEW OF BAY OF BENGAL



19/04/2020, 12:00 MATSAT-VIS

Ref: <http://satellite.imd.gov.in/insat.htm>



Fleet Forecast Sea Area C-90 (Valid for 12 Hrs Commencing 1000 UTC of 19.04.2020)

Part One	NO STORM WARNING.	
Part Two	SEASONAL LOW LIES OVER SOUTH BAY.	
Part Three	Weather	TEMPORARY RAIN/THUNDER SHOWERS OVER AREA C-90.
	Wind	SOUTH-WEST/SOUTHERLY , 08-12 KTS, TEMPORARY GUSTING TO 22
	Visibility	03-05 KMS, REDUCING TO 1500 M OR LESS IN RAIN/SHOWERS.
	Outlook	FOR SUBSEQUENT 12 HOURS: LITTLE CHANGE.
	MSL Pressure	AT =19,0000 UTC. CHATTOGRAM =1010 HPA



Inland River Port Warning (VALID TILL 06 PM OF 19.04.2020)

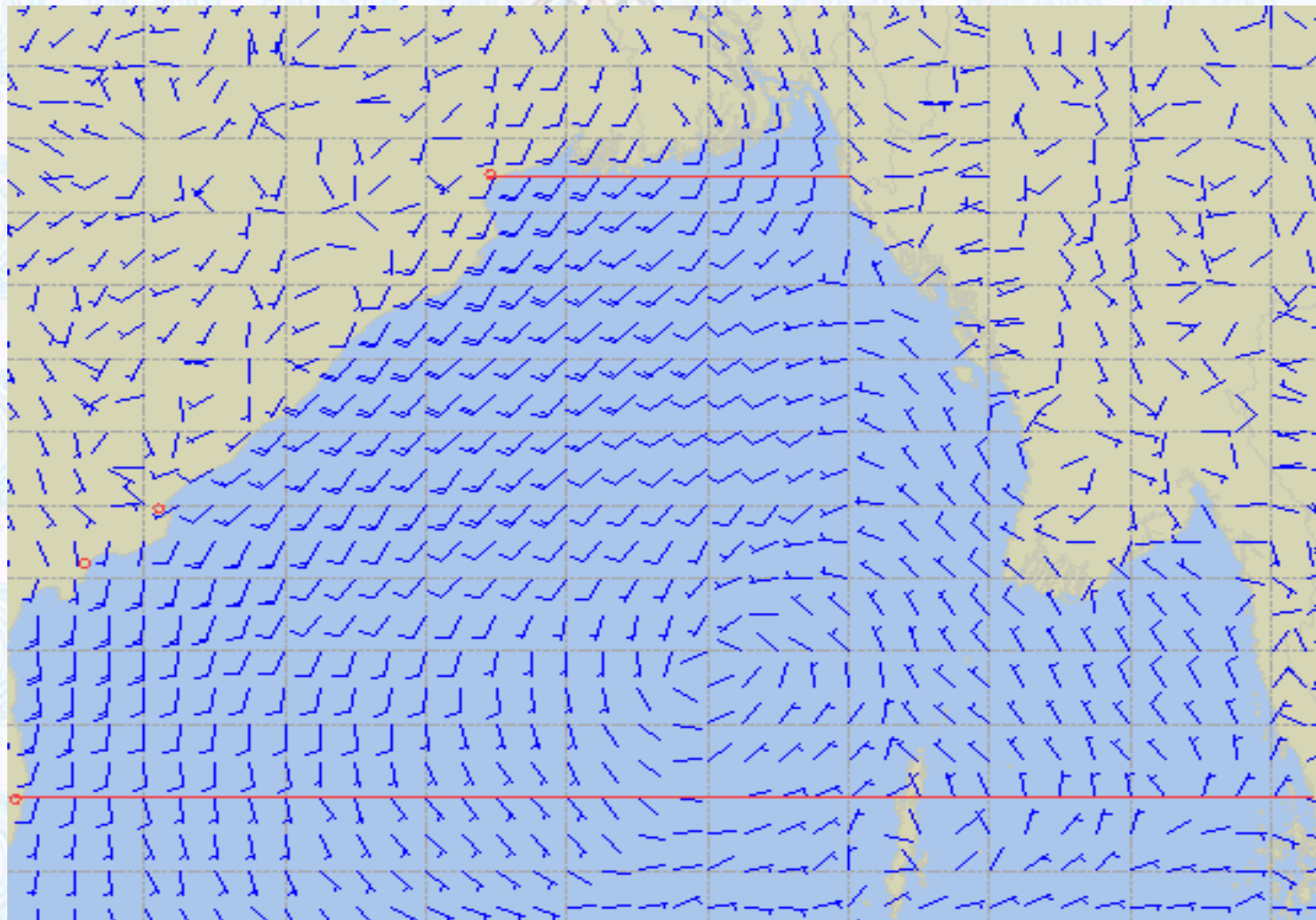
THERE IS NO INLAND RIVERPORTS WARNING AND NO SIGNAL IS TO BE HOISTED.



Ref: <http://www.bmd.gov.bd/?/home>



Surface Wind Forecast- 20 Apr - 2020



Legend:



**Calm
Winds**



5 Knots



10 Knots



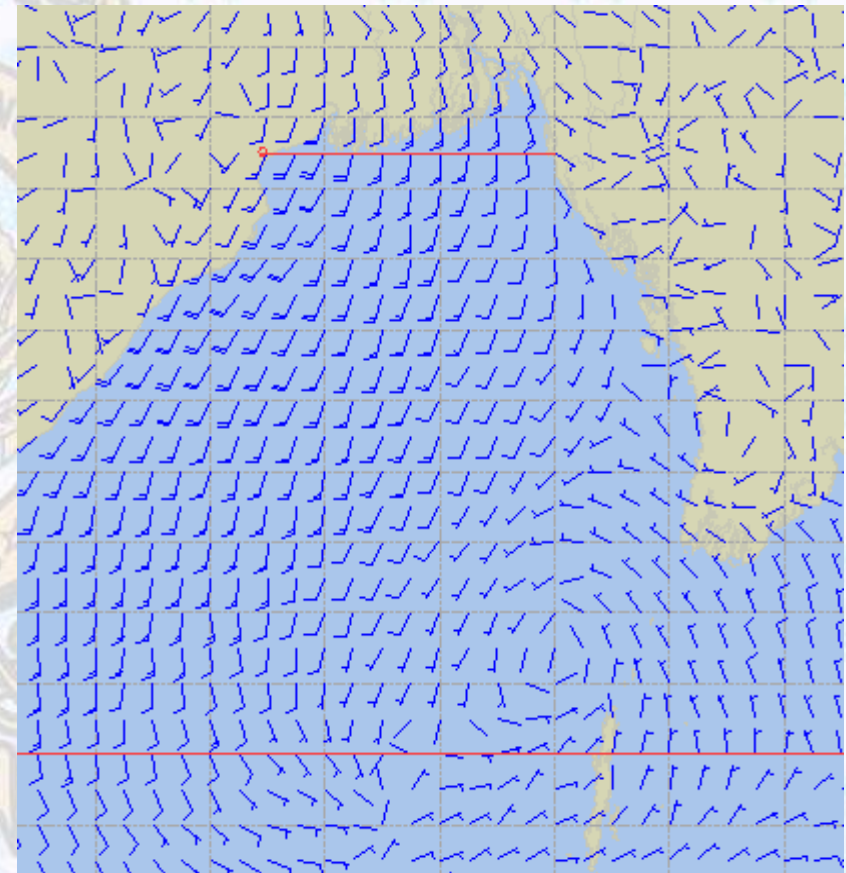
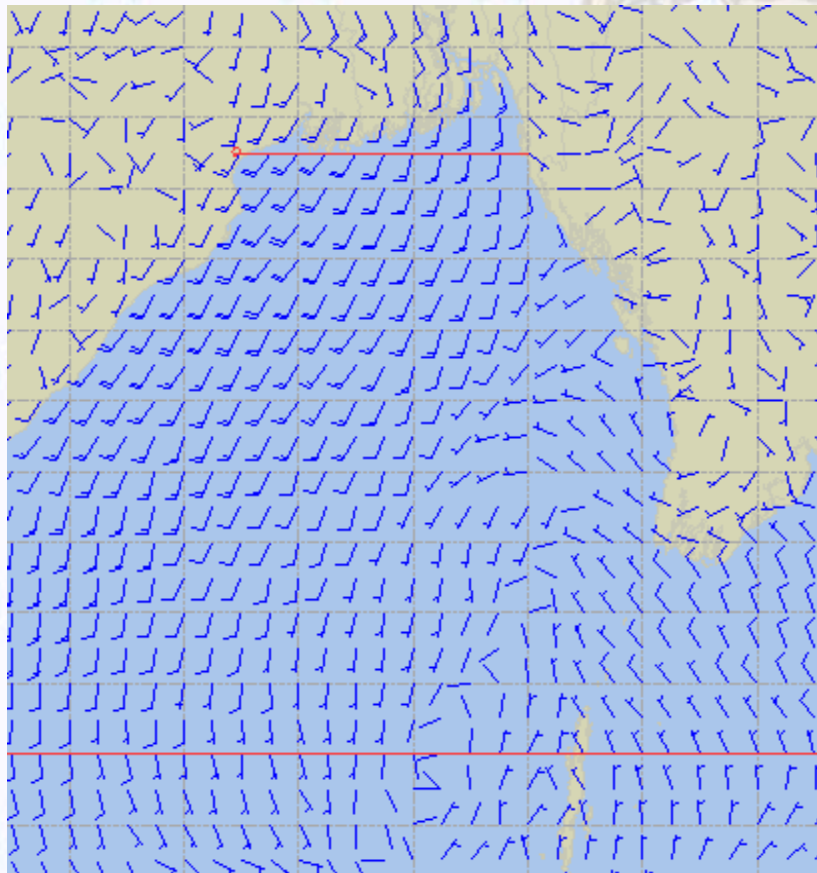
60 Knots



Surface Wind Forecast –21 Apr & 22 Apr- 2020

21 Apr 2020 Tuesday

22 Apr 2020 Wednesday



Legend:



Calm
Winds



5 Knots



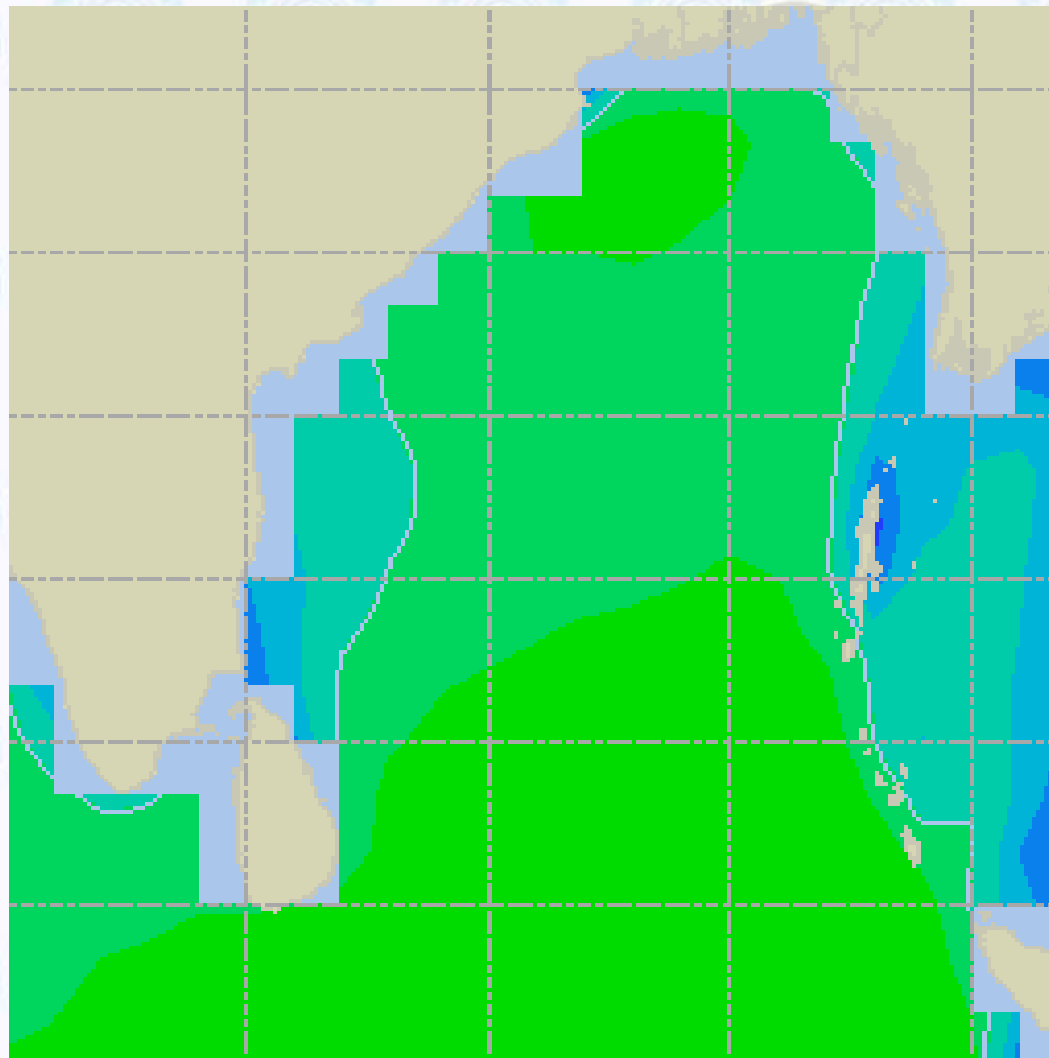
10 Knots



60 Knots



Sea State Forecast - 20 Apr - 2020



Sea State	Ht (m)
0	0-0.1
1	0-0.1
2	0.1-0.5
3	0.5-1.25
4	1.25-2.5
5	2.5-4.0
6	4-6
7	6-9
8	9-14
9	Over 14

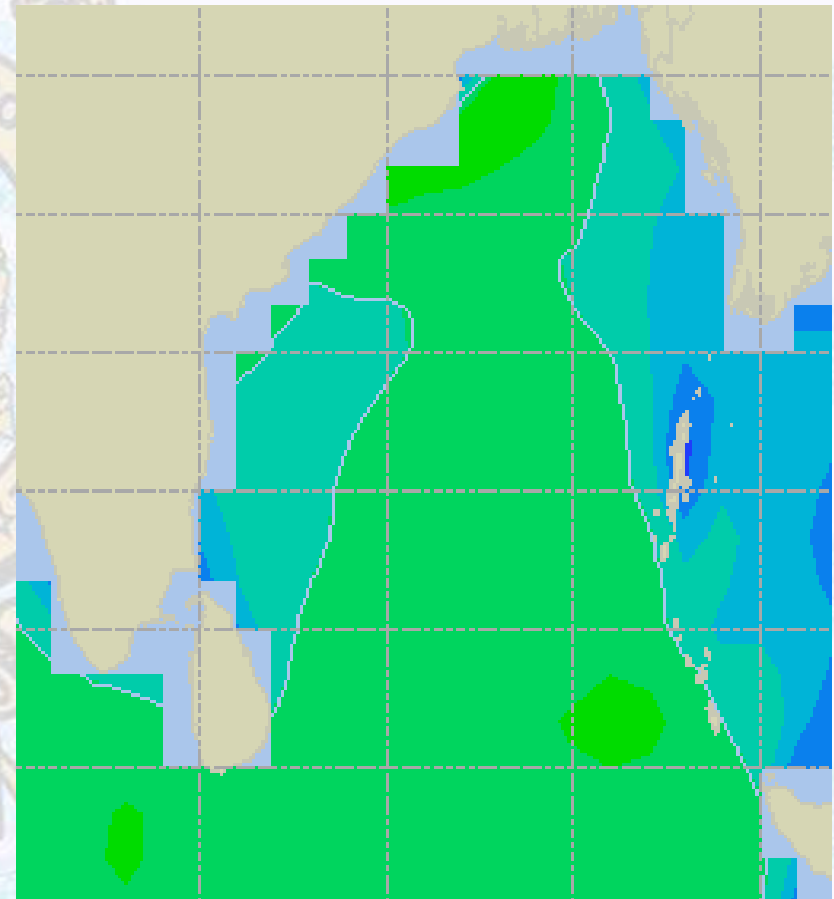
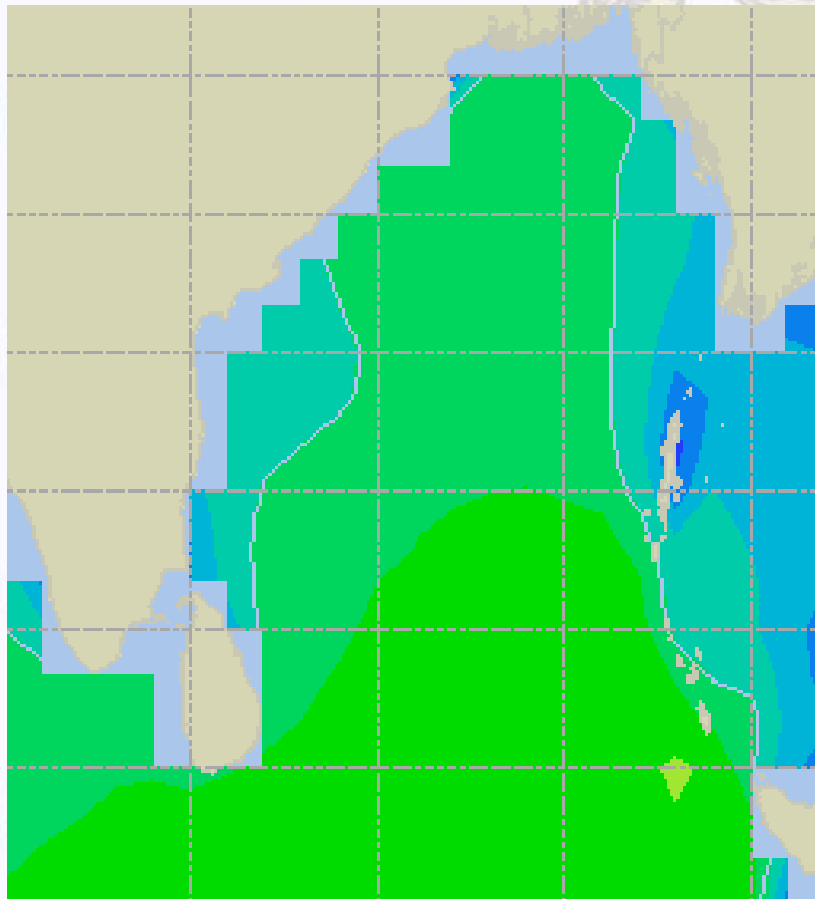




Sea State Forecast – 21 & 22 Apr- 2020

21 Apr 2020 Tuesday

22 Apr 2020 Wednesday

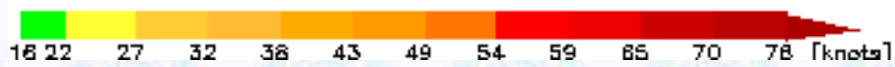
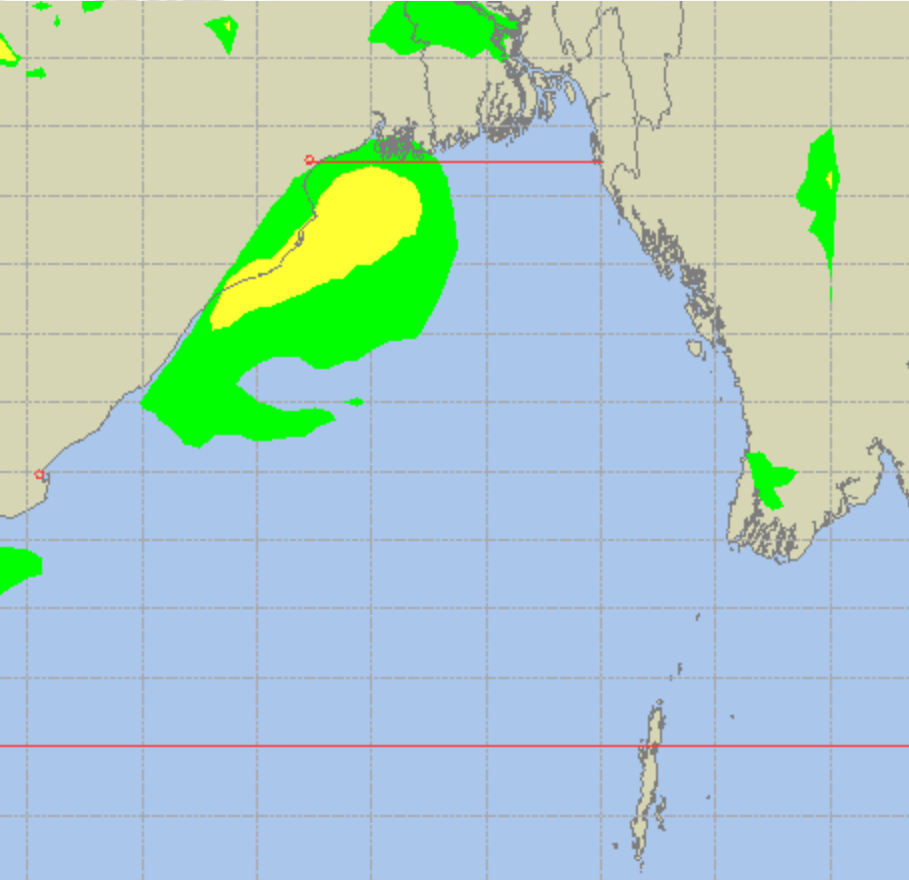
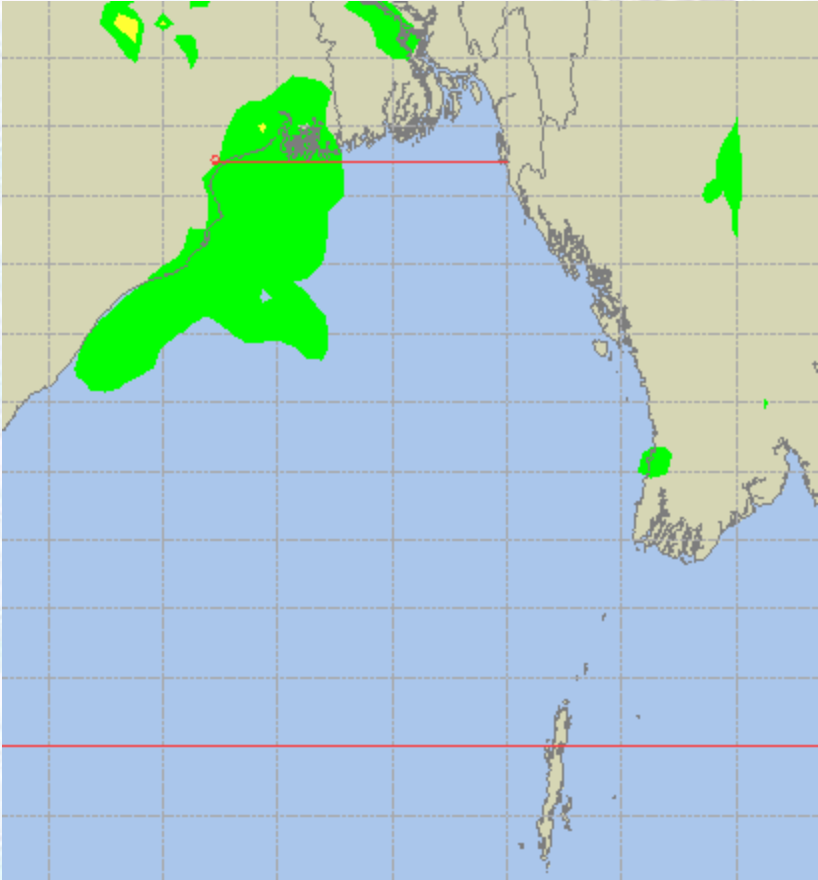




Peak Gusting Possibilities – 20 & 21 Apr 2020

20 Apr 2020 Monday

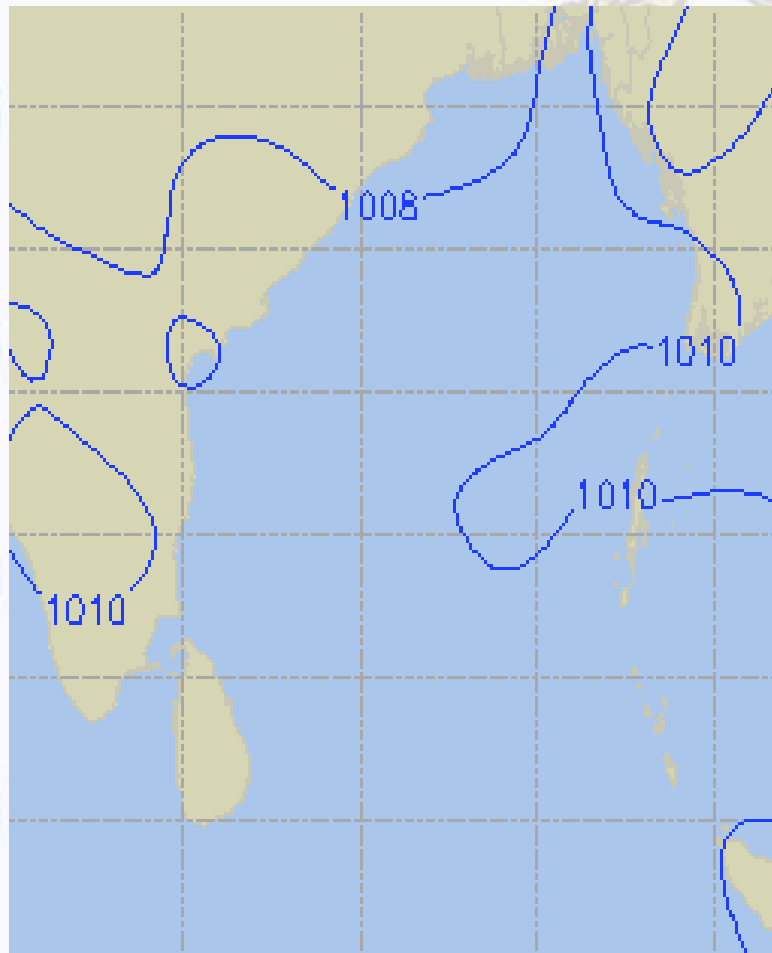
21 Apr 2020 Tuesday



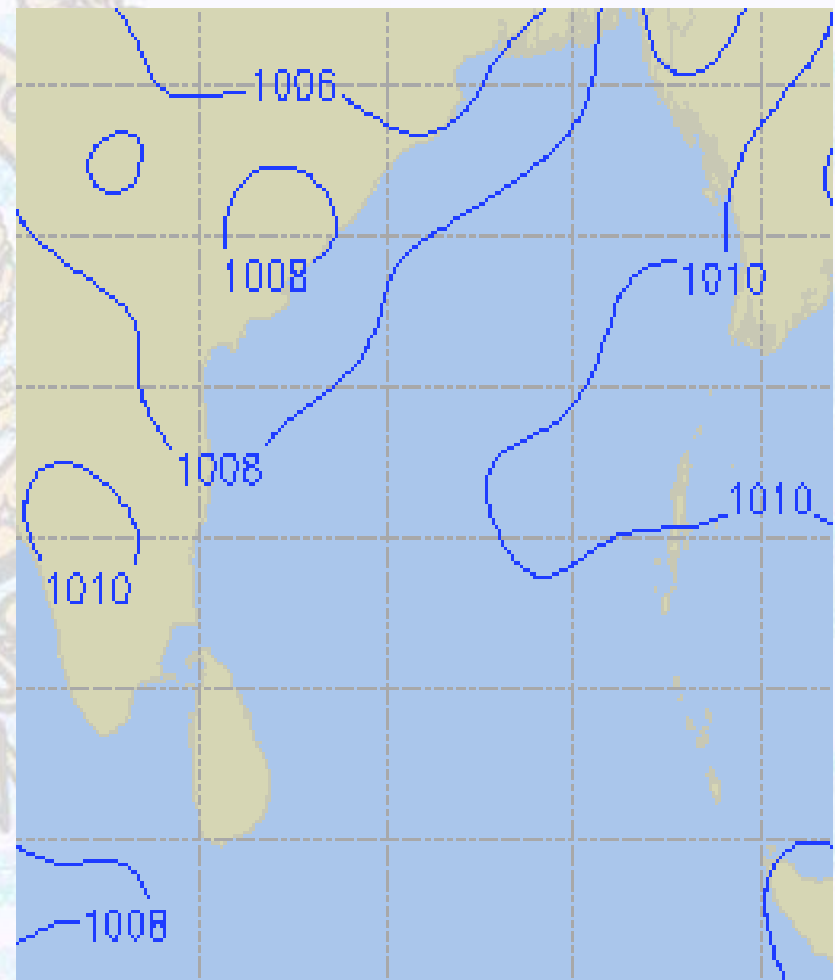


Surface Pressure forecast – 20 & 21 Apr 2020

20 Apr 2020 Monday



21 Apr 2020 Tuesday

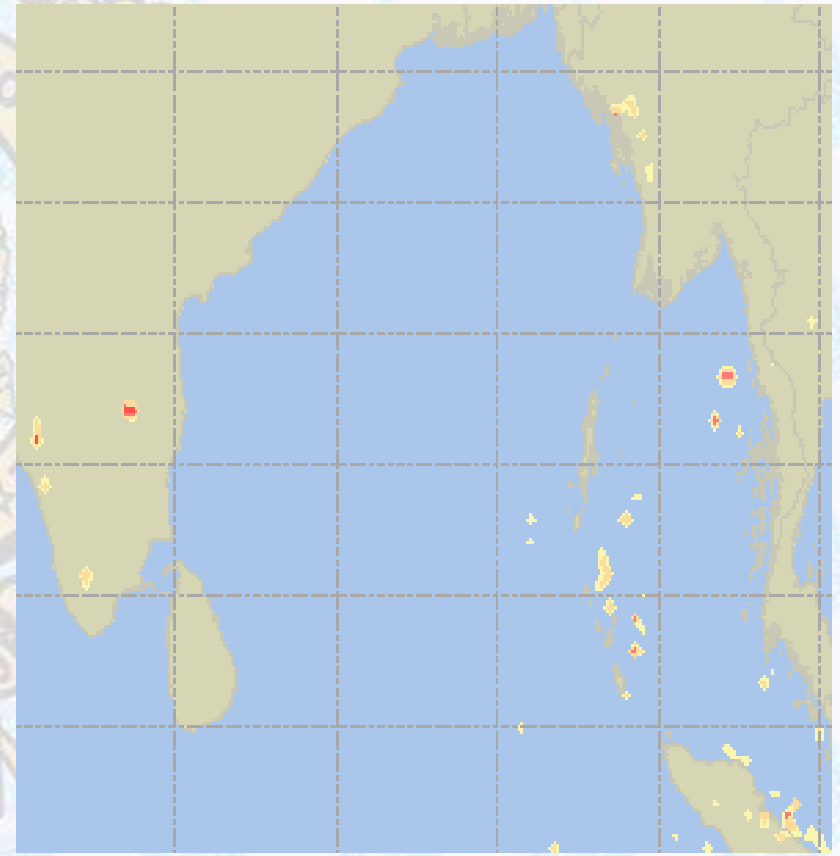
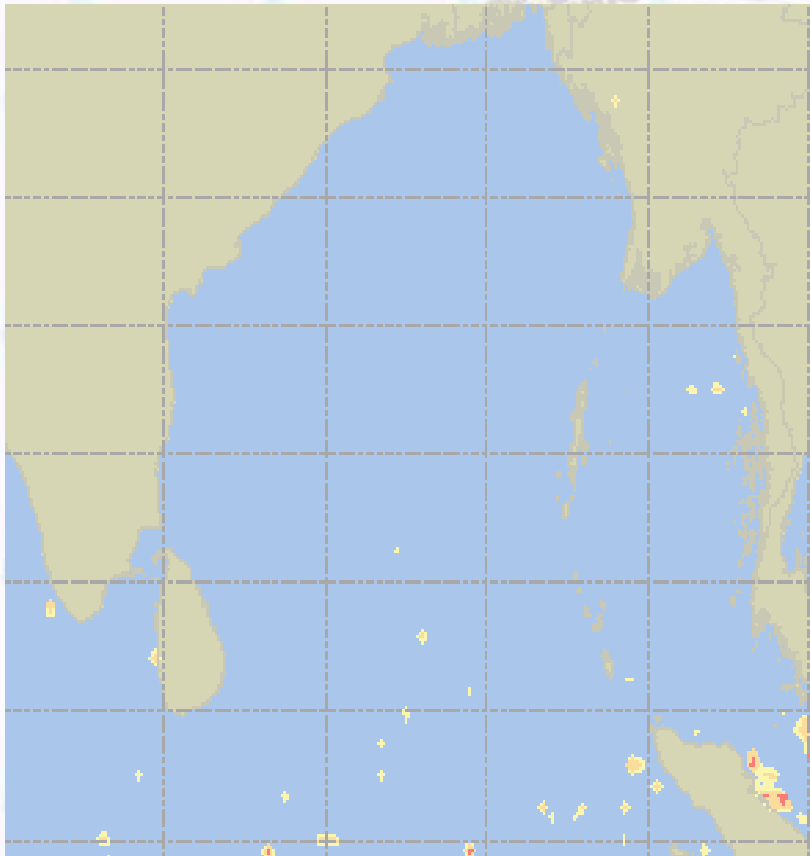




Visibility at Sea Forecast – 20 & 21 Apr - 2020

20 Apr 2020 Monday

21 Apr 2020 Tuesday



Visibility Scale:



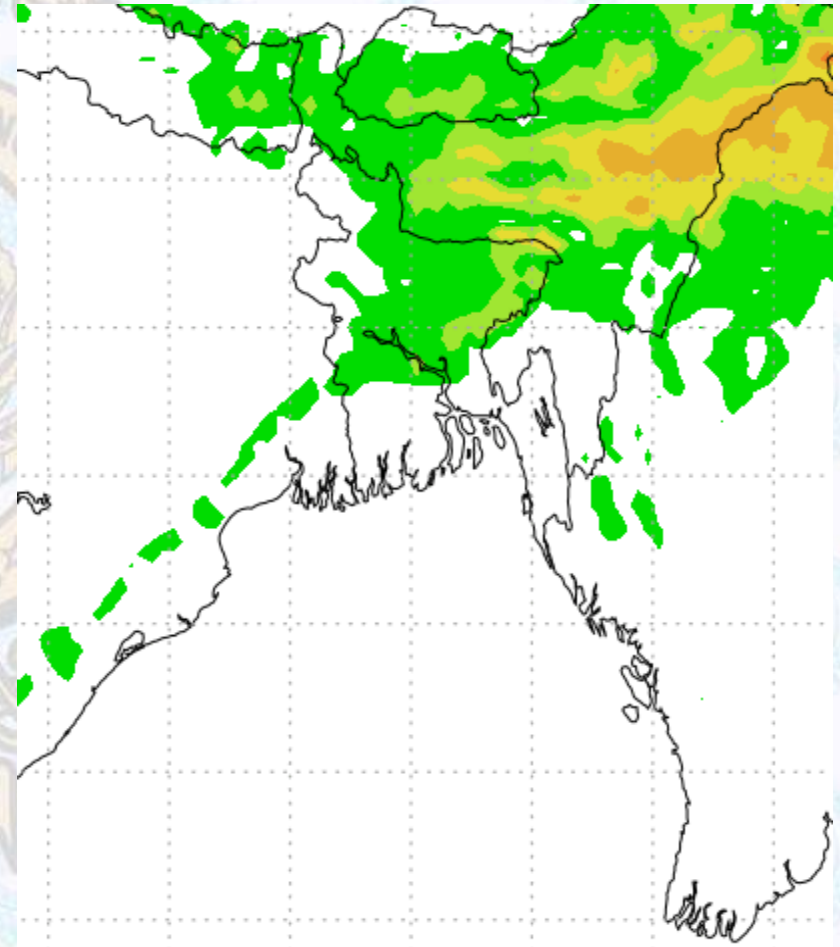
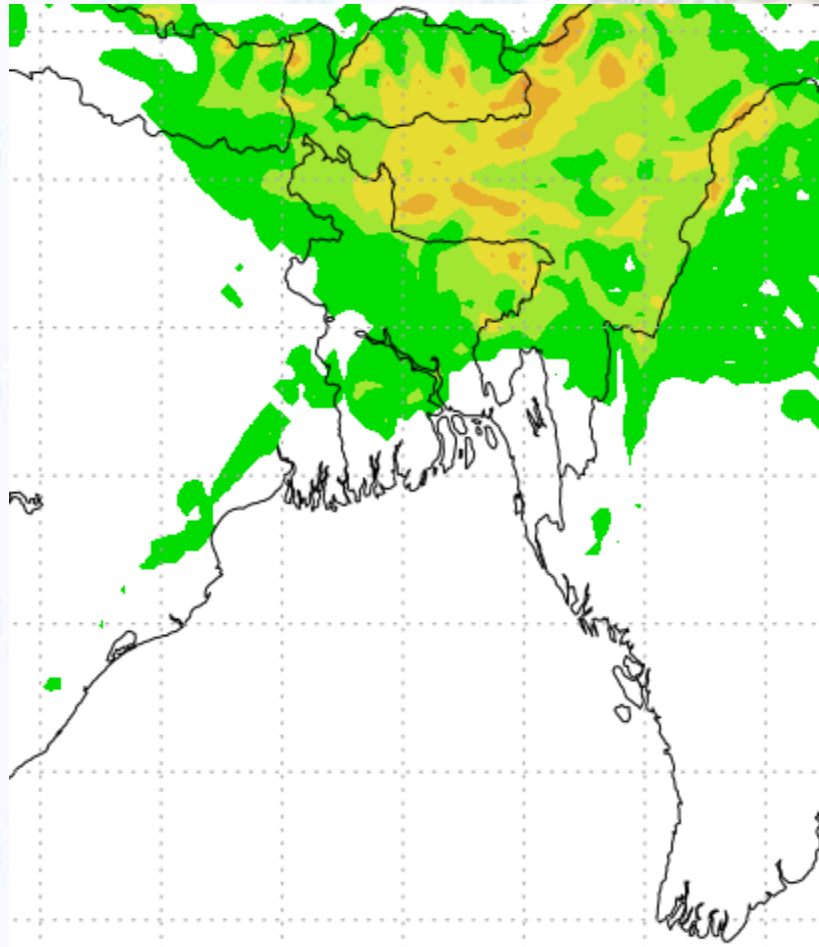
Ref (Slide 12-18): <http://www.weatheronline.co.uk/marine/weather?LEVEL>



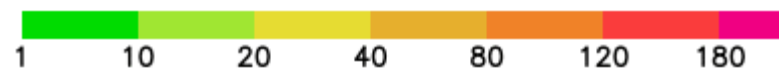
Precipitation

Rain(mm) 20 & 21 Apr 2020

Rain(mm) 21 & 22 Apr 2020



Precipitation Scale (mm):





Tidal Information

KHAL NO. 10

COX'S BAZAR

HIRAN POINT

	Time	Height		Time	Height		Time	Height
		0604		0.69			0335	0.73
20 Apr 2020	1206	4.29		0925	2.94		0934	2.73
	1822	0.78		1557	0.75		1542	0.82
	-	-		2137	3.01		2140	2.73
	Time	Height		Time	Height		Time	Height
		0011		4.28			0412	0.60
21 Apr 2020	0636	0.61		0958	3.16		1004	2.85
	1233	4.45		1633	0.63		1615	0.72
	1853	0.67		2210	3.15		2211	2.77
	Time	Height		Time	Height		Time	Height
		0038		4.39			0445	0.49
22 Apr 2020	0704	0.55		1030	3.33		1031	2.94
	1256	4.55		1705	0.55		1645	0.66
	1921	0.61		2241	3.24		2239	2.79