



WEATHER FORECAST FOR BN

13-16 APR 2020





WEATHER FORECAST – DHAKA

13.04.2020

Hourly	2 PM	4 PM	8 PM	11 PM
Temp. / Dew Point	36 / 22	35 / 21	29 / 22	27 / 21
Wind	10 km/h SSW	11 km/h SSW	11 km/h S	5 km/h SSW
Humidity	52%	56%	75%	68%
Chance of Precip	14%	14%	12%	5%
Cloud Cover	32%	32%	13%	7%
Conditions	Partly Cloudy	Partly Cloudy	Clear	Clear
Sunrise Sunset	5: 41 AM 6: 19 PM			

Conditions

Pressure : 1013 hpa

Visibility : 12.87 km

Ref: <https://www.wunderground.com/weather/bd/dhaka>



WEATHER FORECAST – CHATTOGRAM

13.04.2020

Hourly	2 PM	4 PM	8 PM	11 PM
Temp. / Dew Point	32 / 25	32 / 25	29 / 25	28 / 26
Wind	12 km/h W	14 km/h WSW	14 km/h WSW	5 km/h WNW
Humidity	66%	66%	79%	90%
Chance of Precip.	1%	1%	4%	5%
Cloud Cover	7%	8%	15%	9%
Conditions	Partly Cloudy	Partly Cloudy	Clear	Clear
Sunrise Sunset	5: 36 AM 6: 12 PM			

Conditions

Pressure : 1015 hpa

Visibility : 4.02 Km

Ref: <https://www.wunderground.com/weather/bd/chittagong>



WEATHER FORECAST – KHULNA

13.04.2020

Hourly	2 PM	4 PM	8 PM	11 PM
Temp. / Dew Point	34 / 13	34 / 24	29 / 24	27 / 24
Wind	10 km/h SSW	11 km/h SSW	11 km/h S	5 km/h SSW
Humidity	52%	45%	75%	87%
Chance of Precip.	14%	14%	12%	5%
Cloud Cover	32%	32%	13%	7%
Conditions	Partly Cloudy	Partly Cloudy	Clear	Clear
Sunrise Sunset	5: 46 AM 6: 22 PM			

Conditions

Pressure : 1013 hpa

Visibility : 14.48 Km

Ref: <https://www.wunderground.com/weather/bd/khulna>



GENERAL WEATHER FORECAST – DHAKA

Description	14 Apr 2020	15 Apr 2020	16 Apr 2020
Temperature (C)	37 °C/ 25 °C	36 °C/ 24 °C	35 °C/ 24 °C
Summary	Mostly Sunny	Mostly Sunny	Mostly Sunny
Sun Rise/Set	5h38m06s/18h19m54s	5h37m06s/18h19m54s	5h37m06s/18h21m54s
Day Length	12h41m48s	12h42m48s	12h43m48s
Moon Rise/ Set	-	12:51 AM 11:47 PM	01:39 AM 12:42 PM
Moon Phase/ illu	Waxing Gibbous, 95%	Last Quarter, 44%	Waning Crescent, 34%
Nautical Twilight	0447,1909	0447,1910	0448,1909
Civil Twilight	0515,1842	0516,1842	0515,1843
Humidity	D : 57% N : 74%	D : 57% N : 74%	D : 51% N : 84%
Barometer (mb)	1007	1007	1009
Visibility	Good	Good	Good
Precip Chance	10%	10%	10%
Wind (mph)	09 Km/h S	09 Km/h S	10 Km/h S

Ref: <https://weather.com/weather/5day//BGXX0003:1:BG>



GENERAL WEATHER FORECAST– CHATTOGRAM

Description	14 Apr 2020	15 Apr 2020	16 Apr 2020
Temperature (C)	35°C/ 25°C	36°C/ 25°C	36°C/ 25°C
Summary	Partly coludy /Sunny	Partly coludy /Sunny	Partly coludy /Sunny
Sun Rise/Set	5h34m54s/18h13m36s	5h33m54s/18h13m36s	5h33m54s/18h14m36s
Day Length	13h12m42s	13h13m42s	13h14m42s
Moon Rise/ Set	-	12:51 AM 11:47 PM	01:39 AM 12:42 PM
Moon Phase/ illu	Waxing Gibbous, 95%	Last Quarter, 44%	Waning Crescent, 34%
NauticalTwilight	0444, 1902	0443, 1902	0444, 1903
Civil Twilight	0510, 1835	0510, 1834	0511, 1835
Humidity	D : 35% N : 71%	D : 35% N : 71%	D : 21% N : 81%
Barometer (mb)	1009	1009	1011
Visibility	Good	Good	Good
Precip Chance	0%	0%	0%
Wind (mph)	08 Km/h SSW	08 Km/h SSW	09 Km/h SSW

Ref: <https://weather.com/weather/5day//BGXX0002:1:BG>



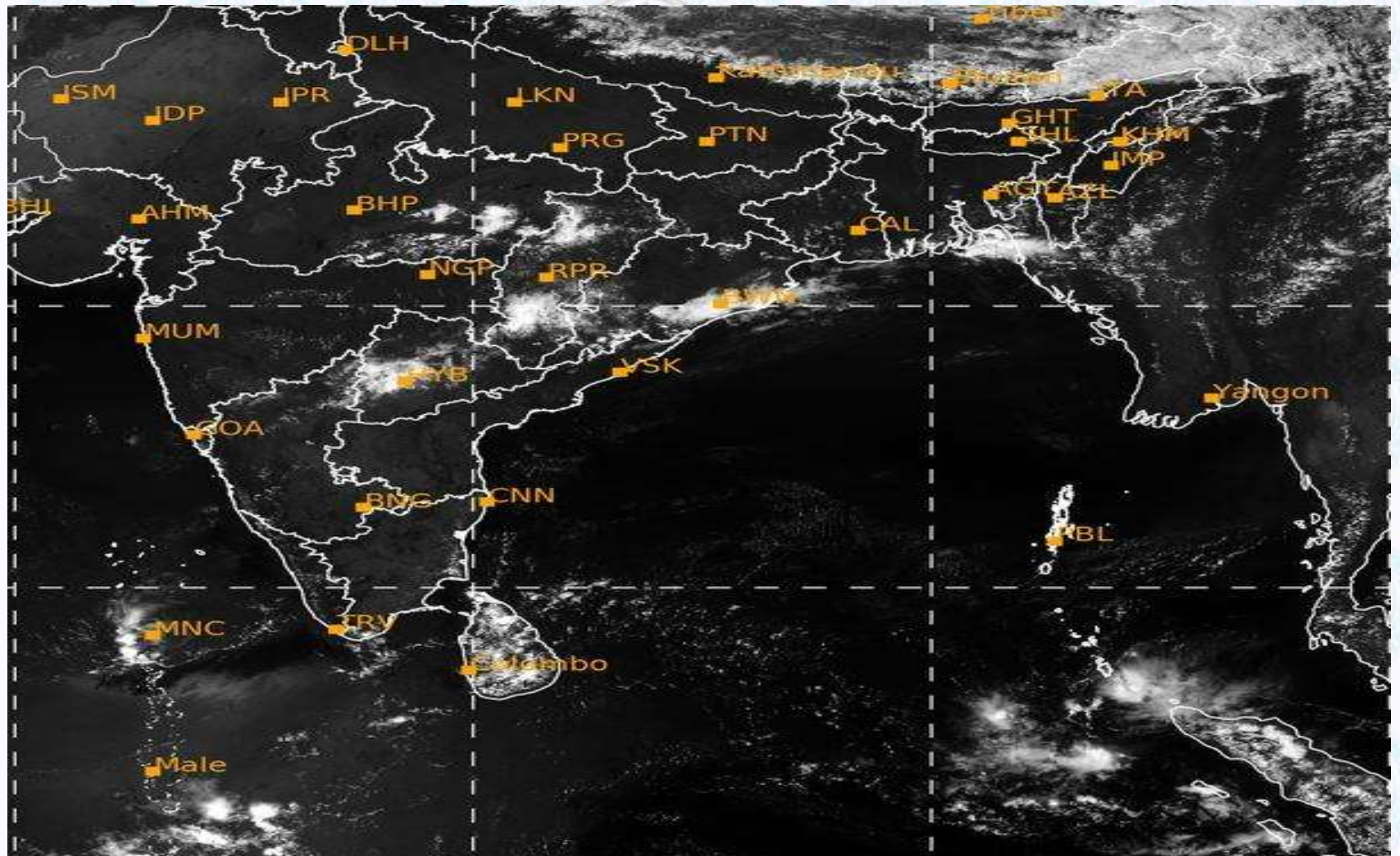
GENERAL WEATHER FORECAST – KHULNA

Description	14 Apr 2020	15 Apr 2020	16 Apr 2020
Temperature(C)	33°C/ 24°C	35°C/ 24°C	35°C/ 24°C
Summary	Partly coludy/Sunny	Partly coludy/Sunny	Partly coludy/Sunny
Sun Rise/Set	5h42m24s/18h22m24s	5h41m24s/18h22m24s	5h40m24s/18h22m24s
Day Length	12h40m00s	12h41m00s	12h42m00s
Moon Rise/Set	-	12:51 AM 11:47 PM	01:39 AM 12:42 PM
Moon Phase/illu	Waxing Gibbous, 95%	Last Quarter, 44%	Waning Crescent, 34%
Nautical Twilight	0452, 1911	0452, 1912	0453, 1912
Civil Twilight	0519, 1845	0520, 1845	0520, 1846
Humidity	D : 31% N : 81%	D : 31% N : 81%	D : 21% N : 73%
Barometer (mb)	1008	1008	1010
Visibility	Good	Good	Good
Precip Chance	0%	0%	0%
Wind (mph)	12 km/h NW	12 km/h NW	11 km/h NW

Ref: <https://weather.com/weather/5day//BGXX0005:1:BG>



SATELLITE VIEW OF BAY OF BENGAL

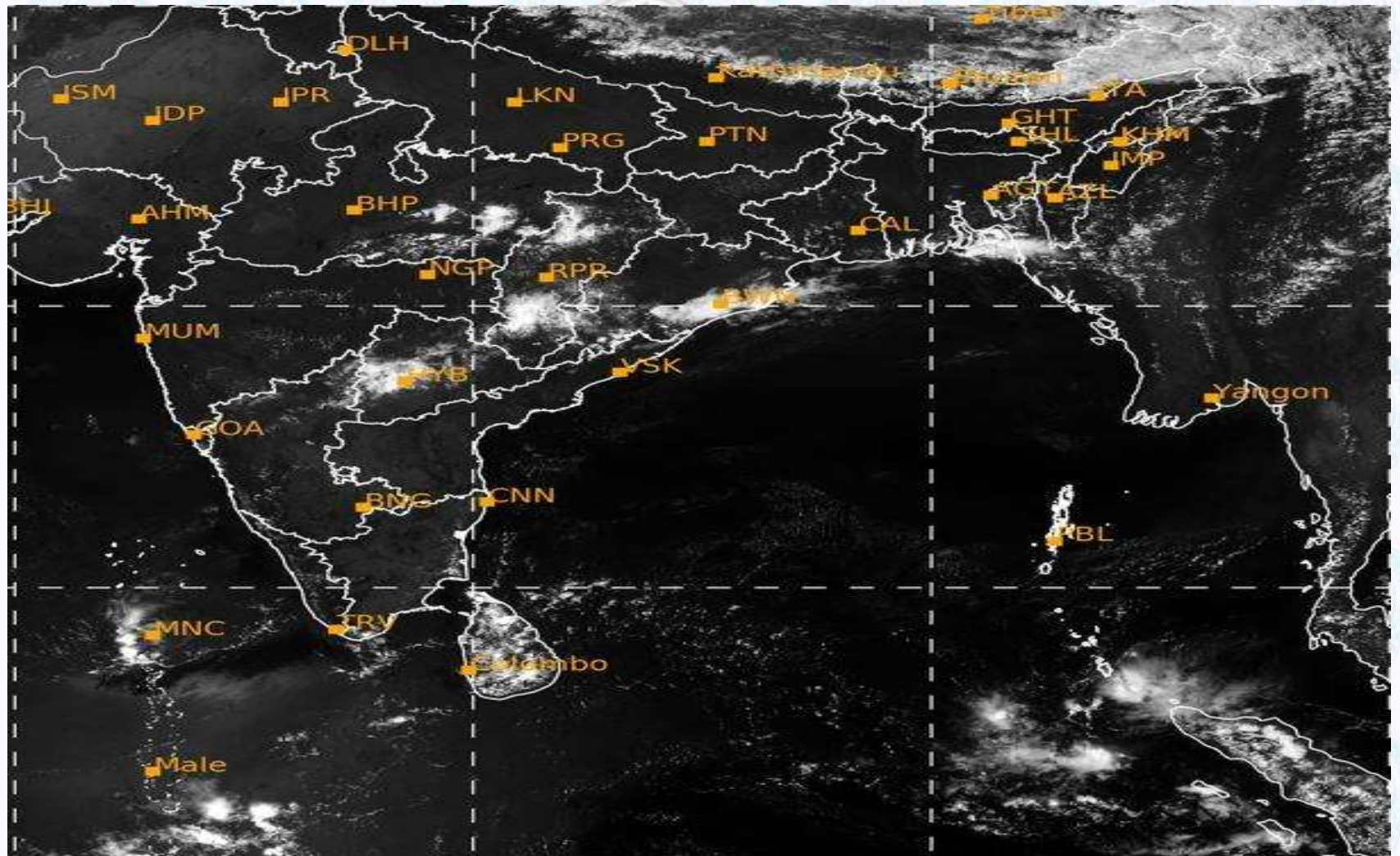


13/04/2020, 14:00 UTC MATSAT-IR

Ref: <http://satellite.imd.gov.in/insat.htm>



SATELLITE VIEW OF BAY OF BENGAL



13/04/2020, 14:00 MATSAT-VIS

Ref: <http://satellite.imd.gov.in/insat.htm>



Fleet Forecast Sea Area C-90 (Valid for 12 Hrs Commencing 1000 UTC of 13.04.2020)

Part One	NO STORM WARNING.	
Part Two	SEASONAL LOW LIES OVER SOUTH BAY.	
Part Three	Weather	RAIN/THUNDER SHOWERS OVER AREA C-90.
	Wind	SOUTH/SOUTH-WESTERLY, 08-15 KTS.
	Visibility	03-05 KMS, REDUCING TO 1500 M OR LESS IN MIST/HAZE.
	Outlook	FOR SUBSEQUENT 12 HOURS: LITTLE CHANGE.
	MSL Pressure	AT =13,0000 UTC. CHATTOGRAM =1015 HPA



Inland River Port Warning (VALID TILL 06 PM OF 13.04.2020)

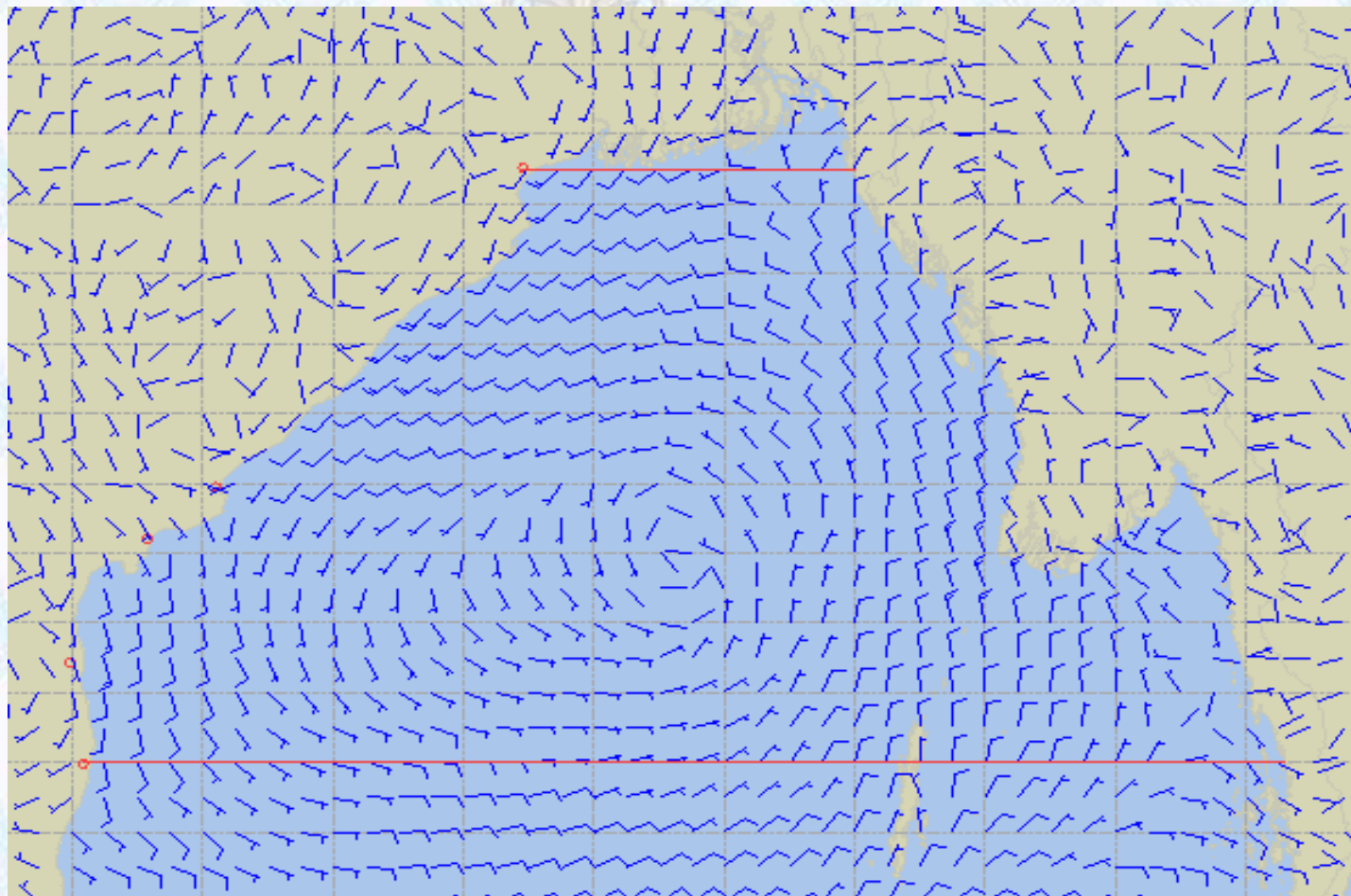
THERE IS NO INLAND RIVERPORT WARNING AND NO SIGNAL IS TO BE HOISTED.



Ref: <http://www.bmd.gov.bd/?/home>



Surface Wind Forecast- 14 Apr - 2020



Legend:



Calm
Winds



5 Knots



10 Knots



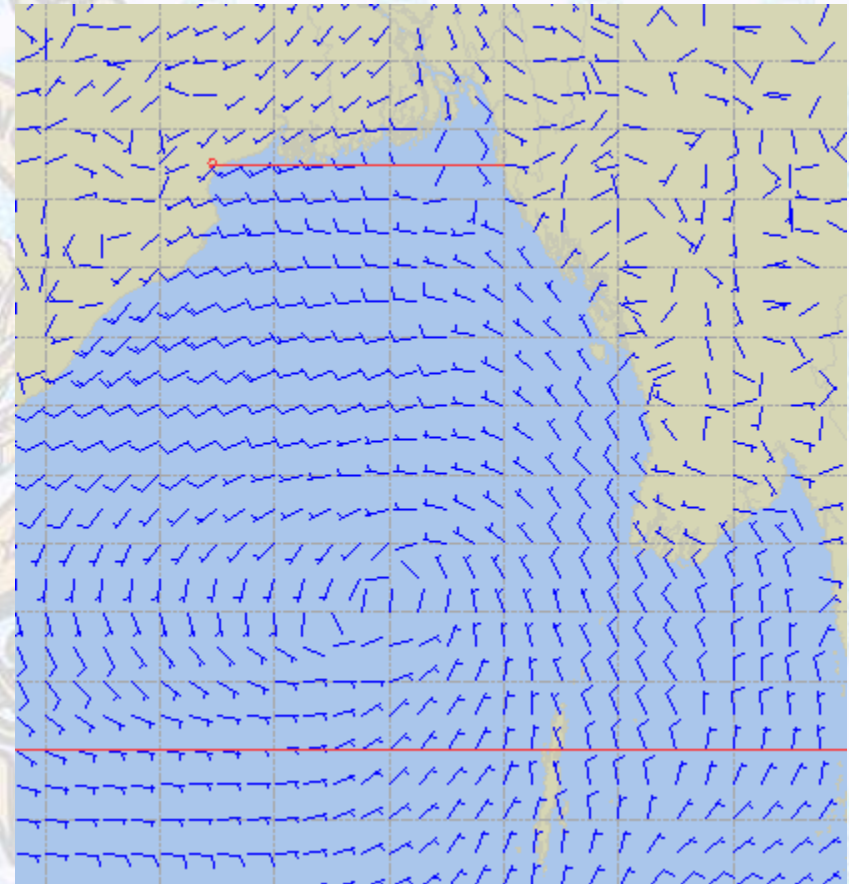
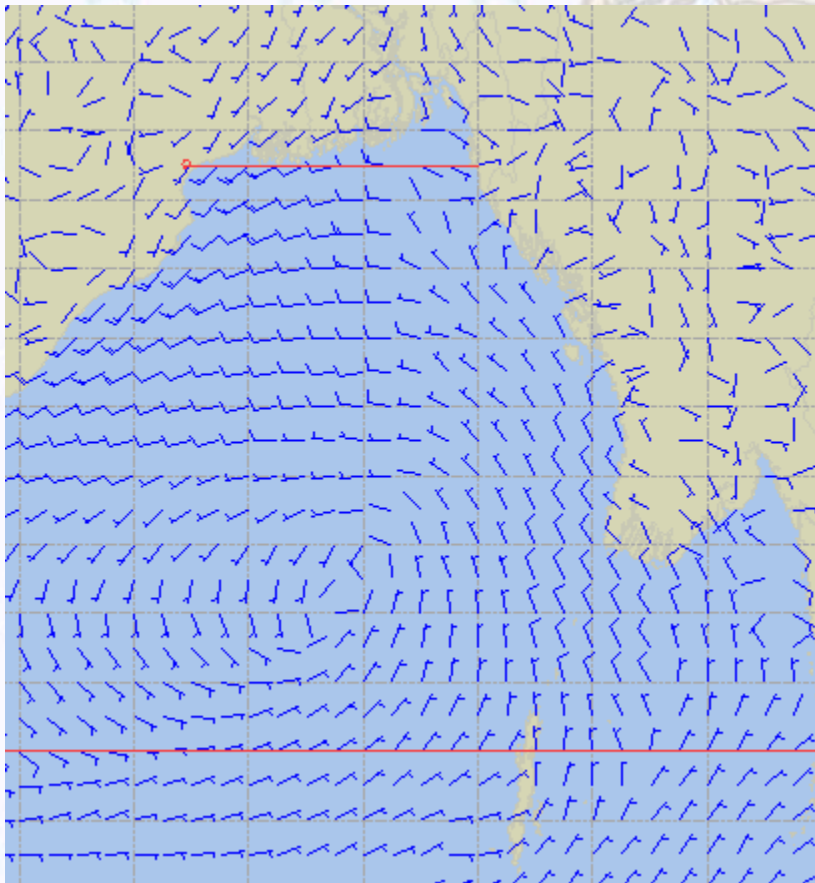
60 Knots



Surface Wind Forecast –15 Apr & 16 Apr- 2020

15 Apr 2020 Wednesday

16 Apr 2020 Thursday



Legend:



Calm
Winds



5 Knots



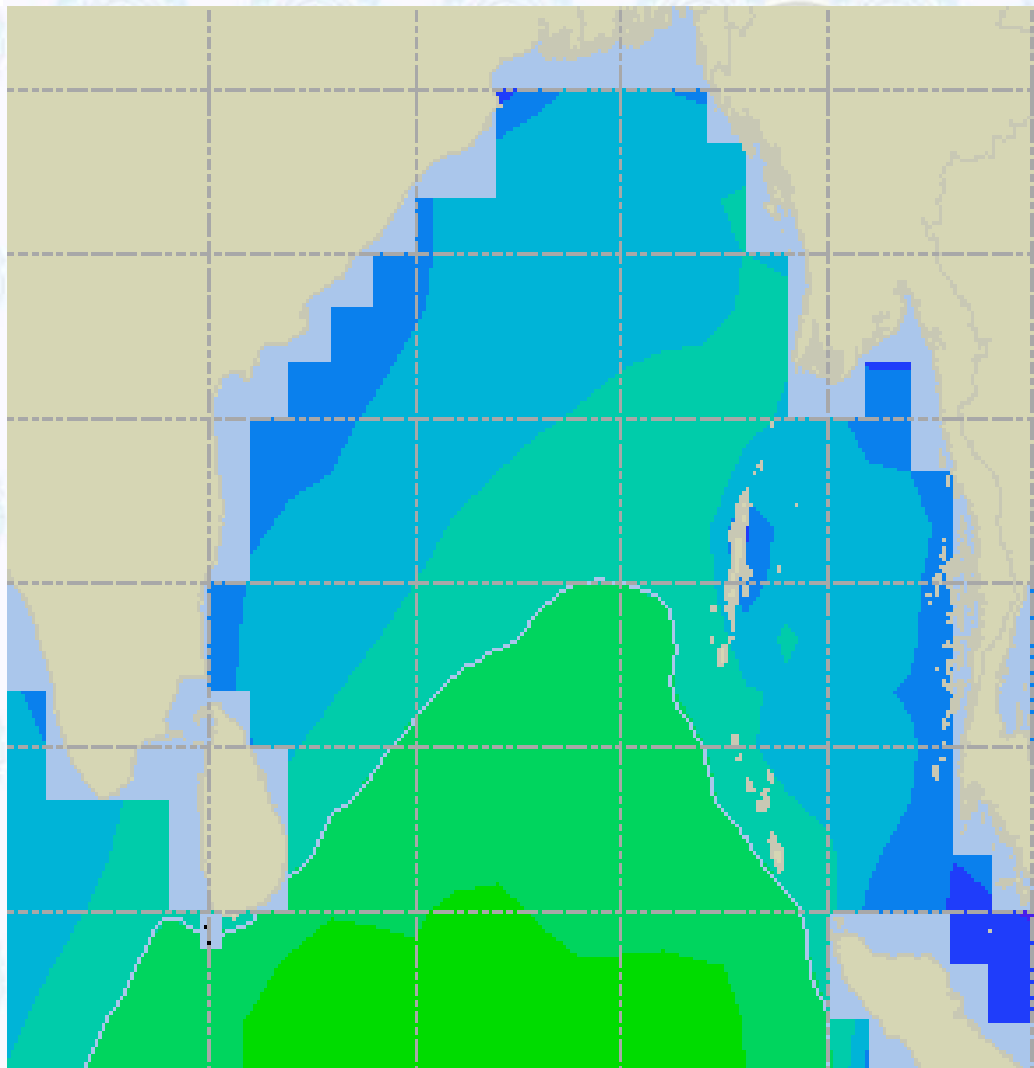
10 Knots



60 Knots



Sea State Forecast - 14 Apr - 2020



Sea State	Ht (m)
0	0-0.1
1	0-0.1
2	0.1-0.5
3	0.5-1.25
4	1.25-2.5
5	2.5-4.0
6	4-6
7	6-9
8	9-14
9	Over 14

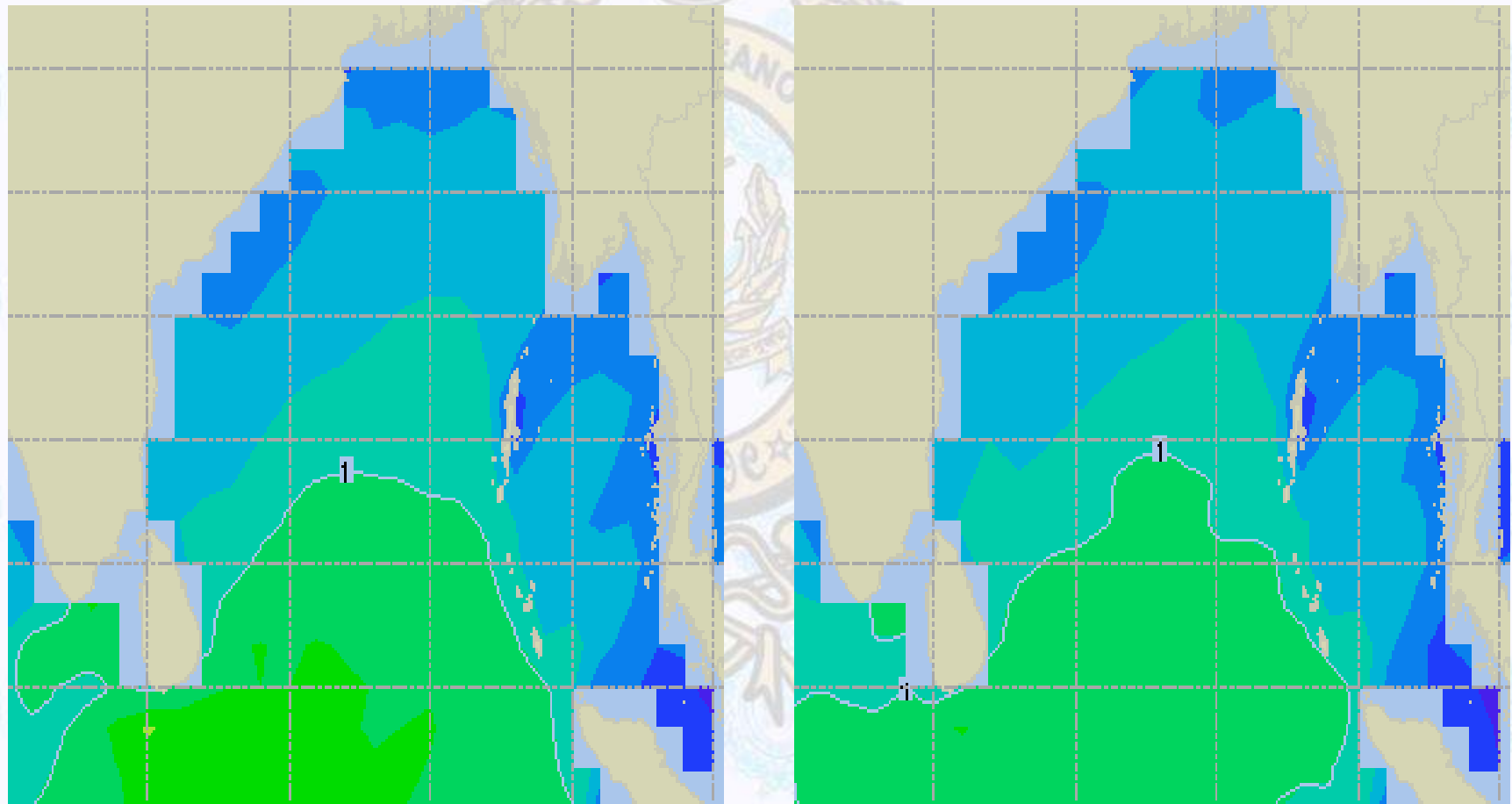




Sea State Forecast - 15 Apr & 16 Apr- 2020

15 Apr 2020 Wednesday

16 Apr 2020 Thursday

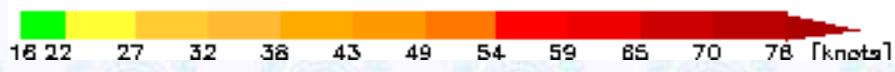
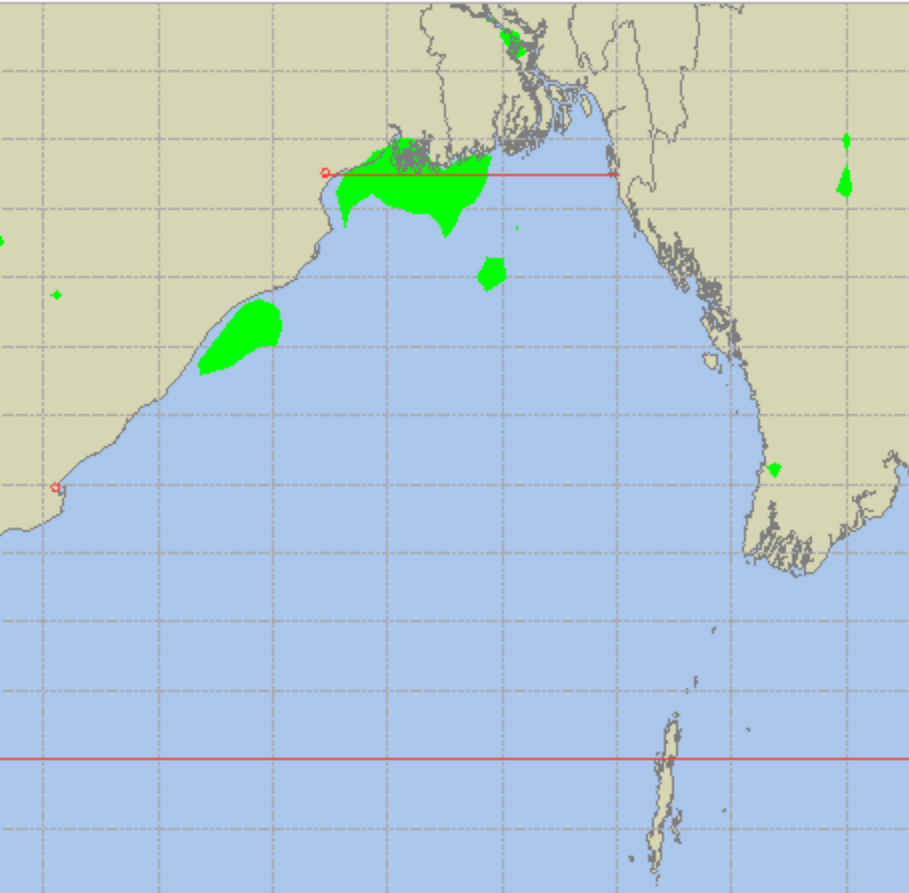
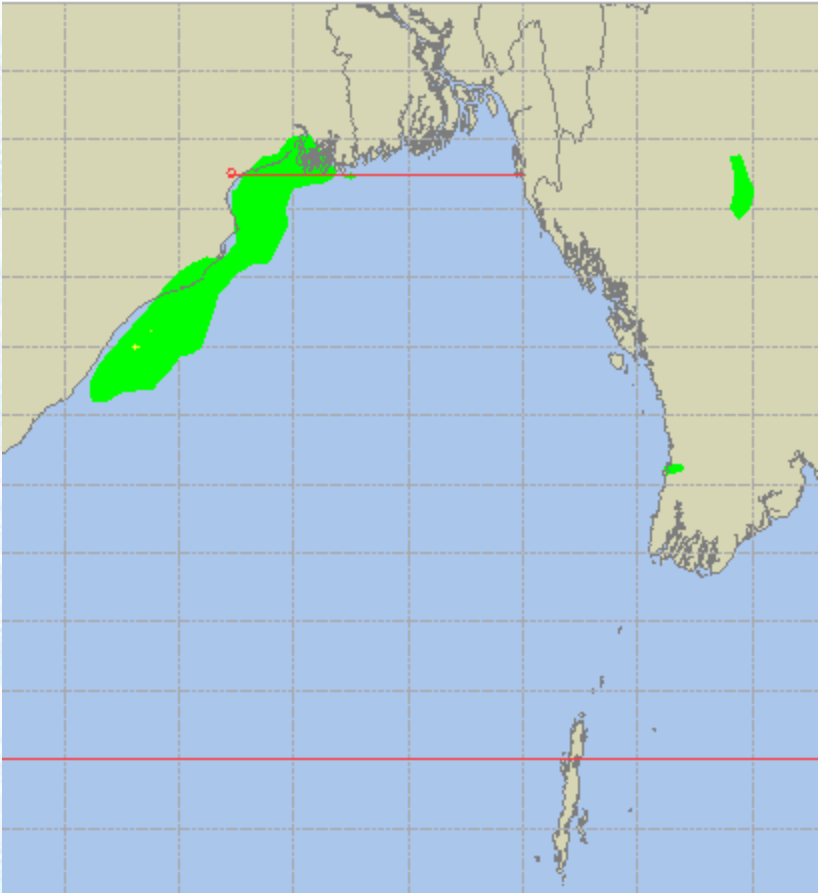




Peak Gusting Possibilities – 14 & 15 Apr 2020

14 Apr 2020 Tuesday

15 Apr 2020 Wednesday

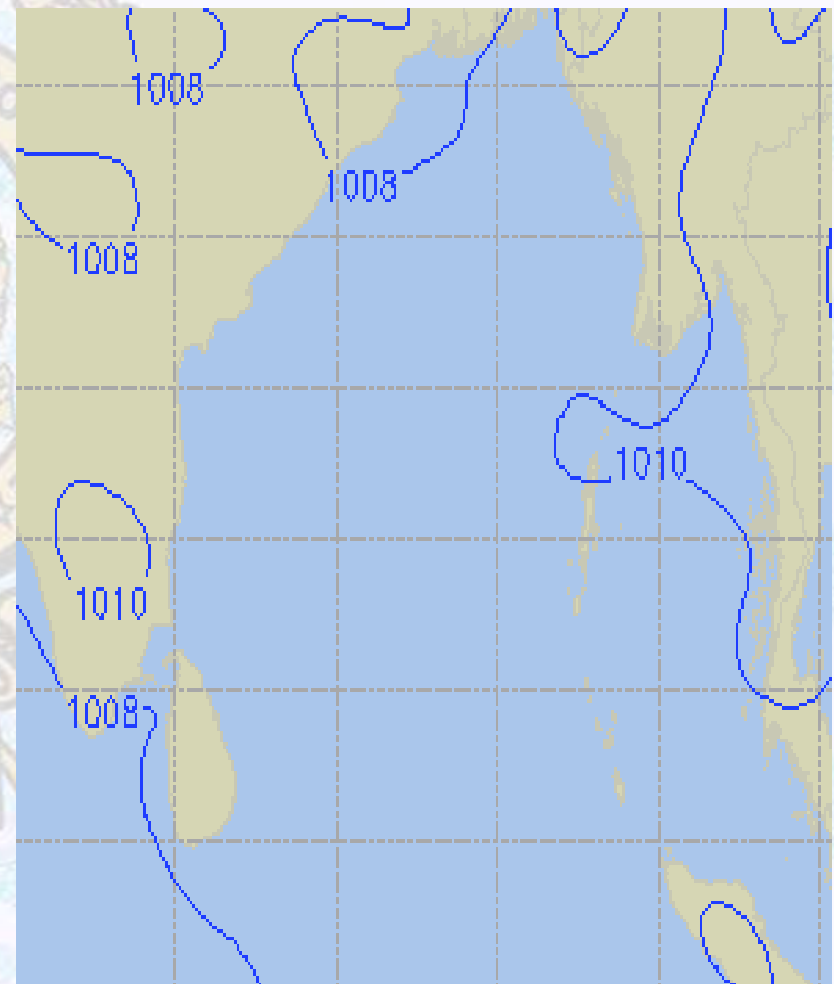
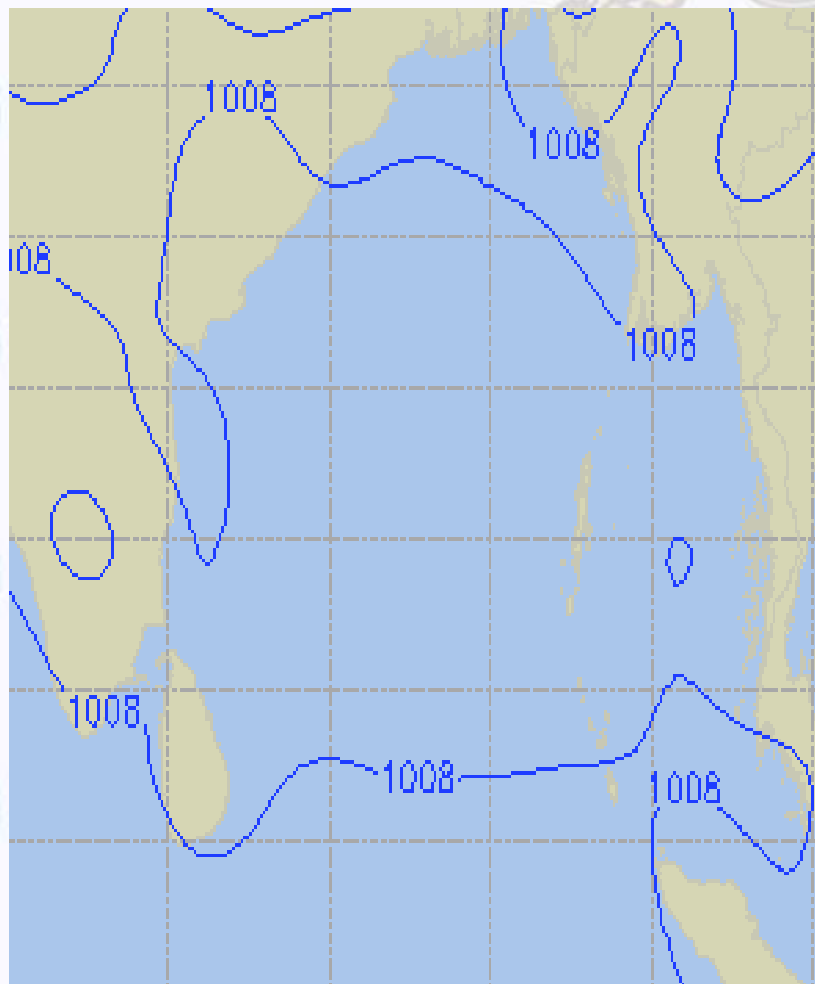




Surface Pressure forecast – 14 & 15 Apr 2020

14 Apr 2020 Monday

15 Apr 2020 Wednesday

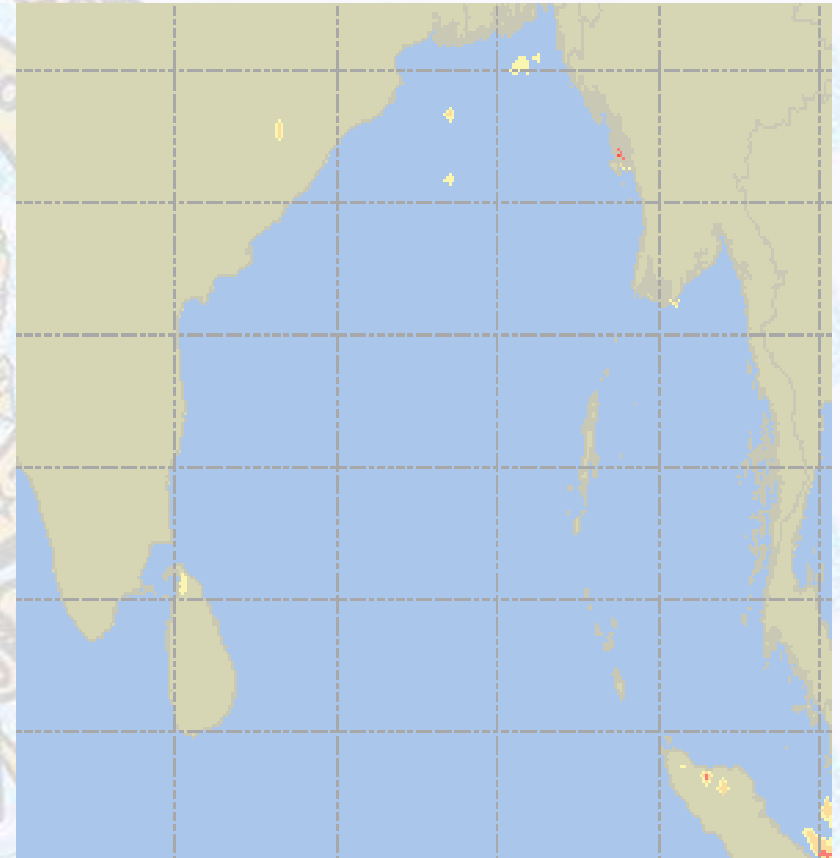
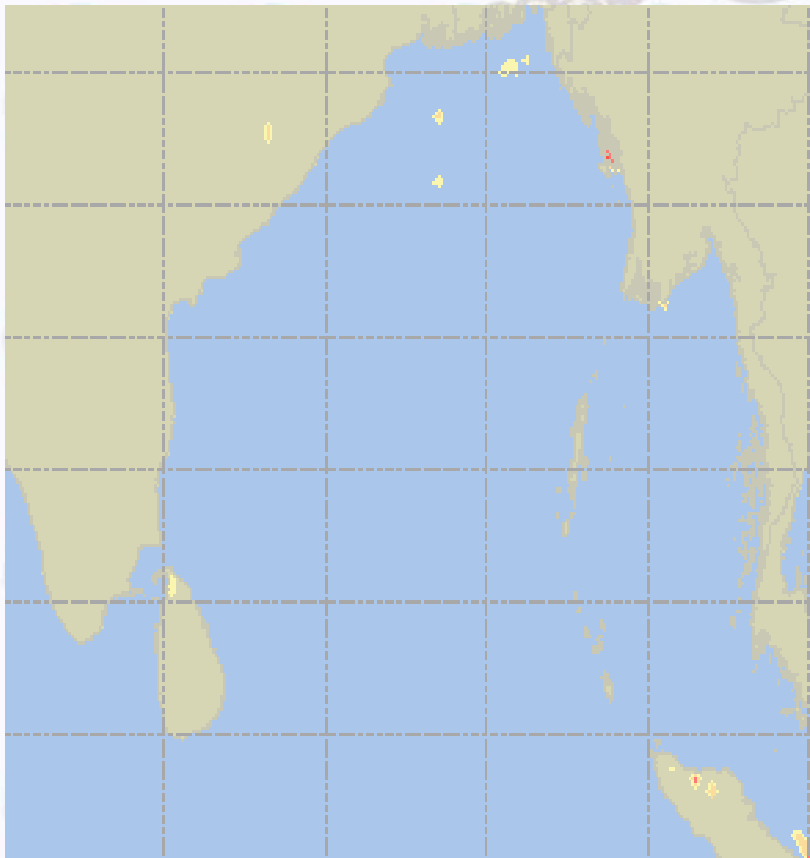




Visibility at Sea Forecast – 14 & 15 Apr - 2020

14 Apr 2020 Monday

15 Apr 2020 Wednesday



Visibility Scale:



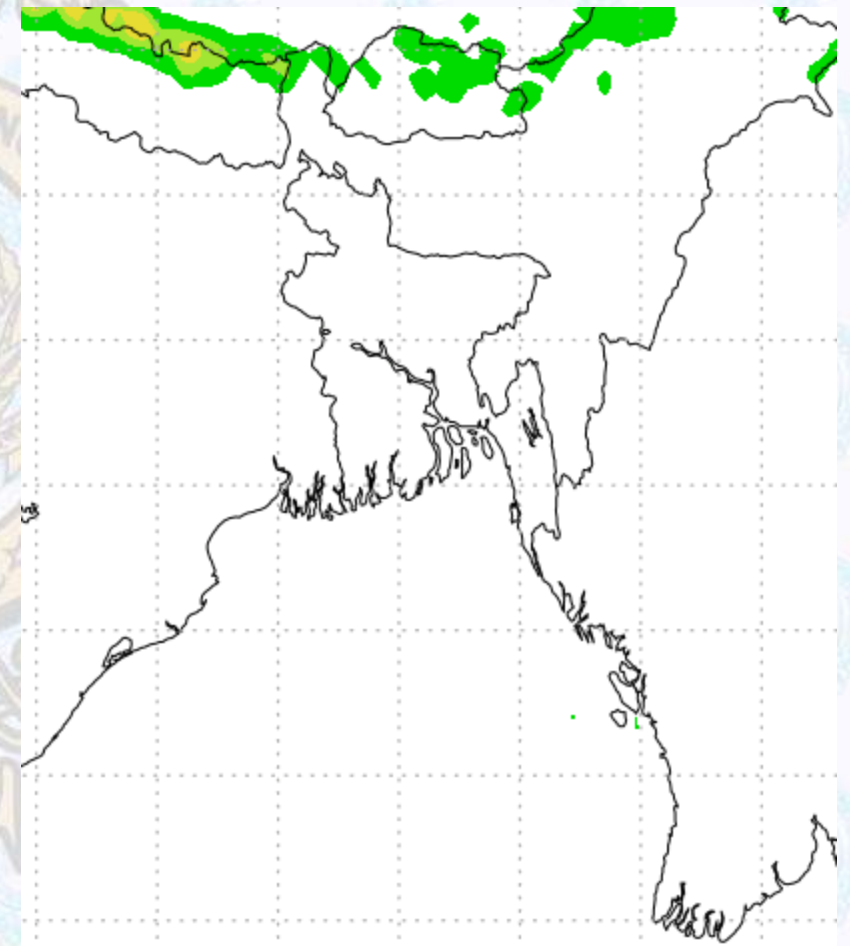
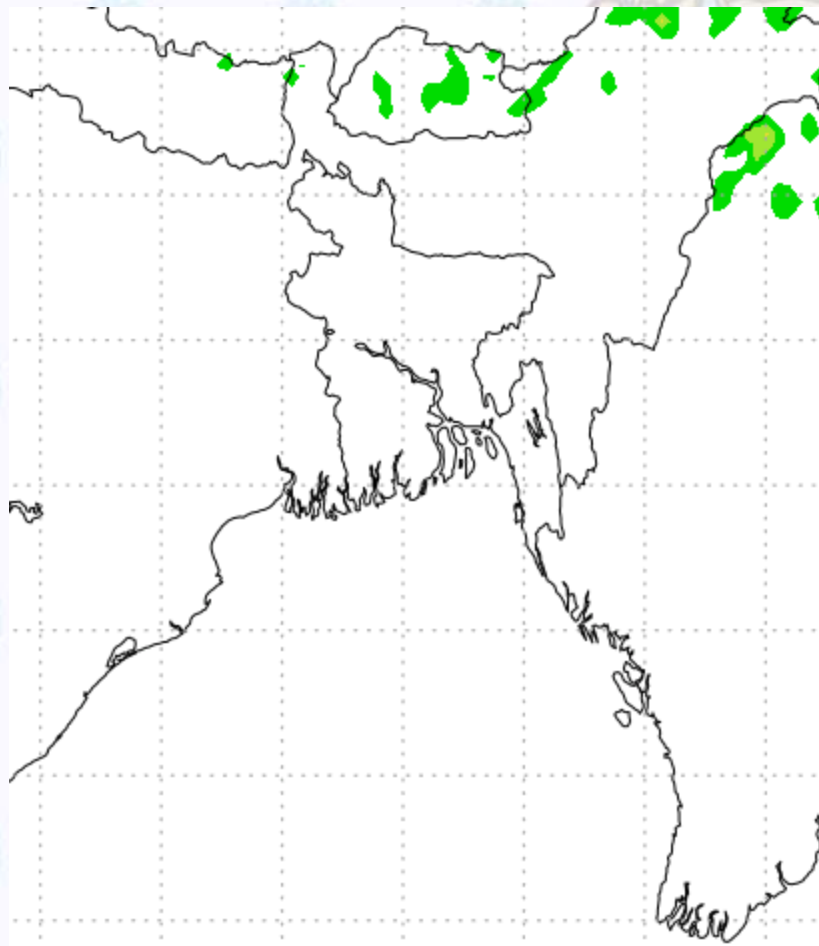
Ref (Slide 12-18): <http://www.weatheronline.co.uk/marine/weather?LEVEL>



Precipitation

Rain(mm) 14 & 15 Apr 2020

Rain(mm) 15 & 16 Apr 2020



Precipitation Scale (mm):





Tidal Information

KHAL NO. 10

COX'S BAZAR

HIRAN POINT

	Time	Height		Time	Height		Time	Height
		0527		3.62			0237	2.59
14 Apr 2020	1138	1.17		0902	0.76		0841	1.02
	1759	3.88		1508	2.73		1509	2.49
	-	-		2141	0.92		2155	1.21
	Time	Height		Time	Height		Time	Height
		0048		1.19			0335	2.31
15 Apr 2020	0651	3.35		0959	0.99		0951	1.25
	1259	1.47		1508	2.49		1632	2.34
	1926	3.68		2141	1.10		2337	1.28
	Time	Height		Time	Height		Time	Height
		0220		1.24			0456	2.14
16 Apr 2020	0835	3.32		1129	1.15		1144	1.34
	1441	1.53		1742	2.37		1822	2.33
	2056	3.67		-	-		-	-