



WEATHER FORECAST FOR BN

25 - 28 - FEB 2020



WEATHER FORECAST – DHAKA

25.02.2020

Hourly	2 PM	4 PM	8 PM	11 PM
Temp. / Dew Point	23 / 18	23 / 18	22 / 19	20 / 19
Wind	7 km/h WNW	3 km/h SE	5 km/h NE	2 km/h NNE
Humidity	73%	74%	83%	90%
Chance of Precip	24%	01%	22%	24%
Cloud Cover	92%	90%	67%	68%
Conditions	Cloudy	Cloudy	Mostly Cloudy	Mostly Cloudy
Sunrise Sunset	6: 26 AM 6: 00 PM			

Conditions

Pressure : 1013 hpa

Visibility : 6.44 km

Ref: <https://www.wunderground.com/weather/bd/dhaka>



WEATHER FORECAST – CHATTOGRAM

25.02.2020

Hourly	2 PM	4 PM	8 PM	11 PM
Temp. / Dew Point	27 / 20	27 / 21	23 / 20	22 / 20
Wind	13 km/h W	14 km/h WNW	8 km/h N	7 km/h NE
Humidity	67%	69%	83%	88%
Chance of Precip.	1%	1%	5%	1%
Cloud Cover	75%	57%	67%	81%
Conditions	Partly Cloudy/ Sunny	Partly Cloudy/ Sunny	Cloudy	Cloudy
Sunrise Sunset	6: 19 AM 5: 55 PM			

Conditions

Pressure : 1012 hpa

Visibility : 8.05 Km

Ref: <https://www.wunderground.com/weather/bd/chittagong>



WEATHER FORECAST – KHULNA

25.02.2020

Hourly	2 PM	4 PM	8 PM	11 PM
Temp. / Dew Point	22 / 19	22 / 19	21 / 19	20 / 18
Wind	12 km/h NW	10 km/h N	3 km/h NE	1 km/h ESE
Humidity	82%	84%	88%	93%
Chance of Precip.	3%	4%	16%	23%
Cloud Cover	93%	88%	75%	63%
Conditions	Cloudy	Cloudy	Mostly Cloudy	Mostly Cloudy
Sunrise Sunset	6: 29 AM 6: 05 PM			

Conditions

Pressure : 1013 hpa

Visibility : 14.48 Km

Ref: <https://www.wunderground.com/weather/bd/khulna>



GENERAL WEATHER FORECAST – DHAKA

Description	26 Feb 2020	27 Feb 2020	28 Feb 2020
Temperature (C)	25°C/ 17°C	26°C/ 17°C	28°C/ 17°C
Summary	Cloudy/ Light Rain	Sunny	Sunny
Sun Rise/Set	6h23m30s/17h59m48s	6h22m48s/18h00m12s	6h22m06s/18h00m30s
Day Length	11h36m18s	11h37m24s	11h38m24s
Moon Rise/ Set	8:04AM 8:16PM	8:36AM 9:06PM	9:09AM 9:56PM
Moon Phase/ illu	Waxing Crescent, 9%	Waxing Crescent, 15%	Waxing Crescent, 23%
Nautical Twilight	0534,1848	0533,1849	0533,1849
Civil Twilight	0600,1822	0600,1822	0559,1823
Humidity	D : 81% N : 92%	D : 76% N : 84%	D : 65% N : 78%
Barometer (mb)	1013	1014	1014
Visibility	Moderate	Good	Good
Precip Chance	50%	10%	10%
Wind (mph)	8 Km/h SSW	6 Km/h N	8 Km/h NNW

Ref: <https://weather.com/weather/5day//BGXX0003:1:BG>



GENERAL WEATHER FORECAST– CHATTOGRAM

Description	26 Feb 2020	27 Feb 2020	28 Feb 2020
Temperature (C)	24°C/ 17°C	26°C/ 17°C	28°C/ 17°C
Summary	Cloudy/ Light Rain	Cloudy/ Sunny	Sunny
Sun Rise/Set	6h16m30s/17h55m06s	6h15m54s/17h55m30s	6h15m18s/17h55m48s
Day Length	11h38m36s	11h39m36s	11h40m30s
Moon Rise/ Set	7:58AM 8:10PM	8:30AM 8:59PM	9:03AM 9:49PM
Moon Phase/ illu	Waxing Crescent, 9%	Waxing Crescent, 15%	Waxing Crescent, 23%
NauticalTwilight	0528, 1843	0527, 1843	0526, 1844
Civil Twilight	0554,1817	0553,1817	0552,1818
Humidity	D : 86% N : 98%	D : 80% N : 92%	D : 70% N : 86%
Barometer (mb)	1014	1015	1014
Visibility	Moderate	Moderate	Good
Precip Chance	50%	10%	10%
Wind (mph)	8 km/h N	11 km/h NW	12 km/h NW

Ref: <https://weather.com/weather/5day//BGXX0002:1:BG>



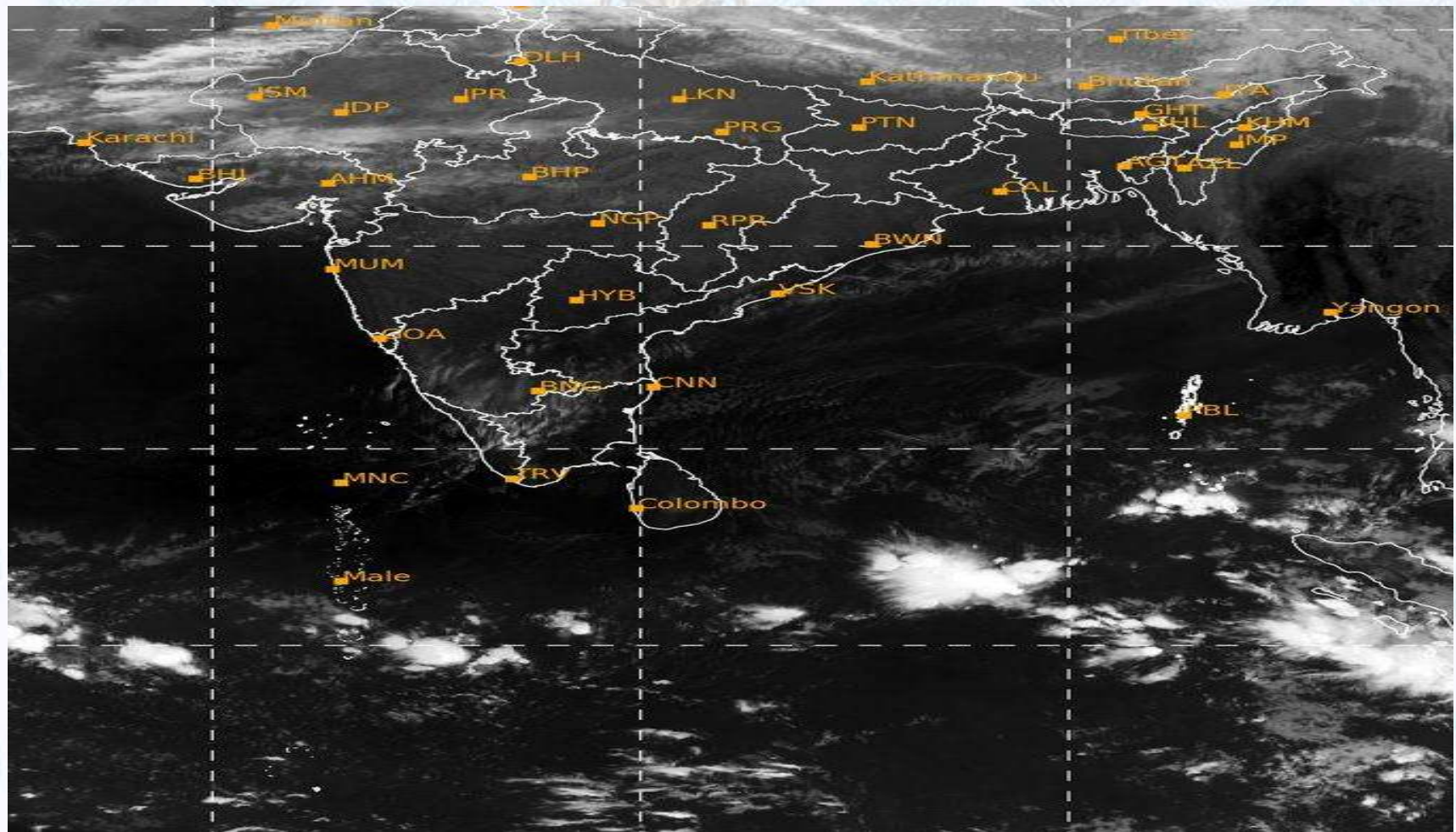
GENERAL WEATHER FORECAST – KHULNA

Description	26 Feb 2020	27 Feb 2020	28 Feb 2020
Temperature(C)	24°C/ 17°C	27°C/ 17°C	28°C/ 17°C
Summary	Cloudy/ Light Rain	Sunny	Sunny
Sun Rise/Set	6h26m06s/18h03m54s	6h25m30s/18h04m18s	6h24m48s/18h04m36s
Day Length	11h37m48s	11h38m48s	11h39m48s
Moon Rise/Set	8:08AM 8:20PM	8:40AM 9:10PM	9:14AM 9:59PM
Moon Phase/illu	Waxing Crescent, 9%	Waxing Crescent, 15%	Waxing Crescent, 23%
Nautical Twilight	0537, 1852	0536, 1852	0536, 1853
Civil Twilight	0603.,1826	0603.,1826	0602.,1827
Humidity	D : 83% N : 95%	D : 73% N : 87%	D : 66% N : 81%
Barometer (mb)	1014	1014	1014
Visibility	Moderate	Good	Good
Precip Chance	50%	10%	10%
Wind (mph)	10 km/h SW	8 km/h NW	9 km/h NNW

Ref: <https://weather.com/weather/5day//BGXX0005:1:BG>



SATELLITE VIEW OF BAY OF BENGAL

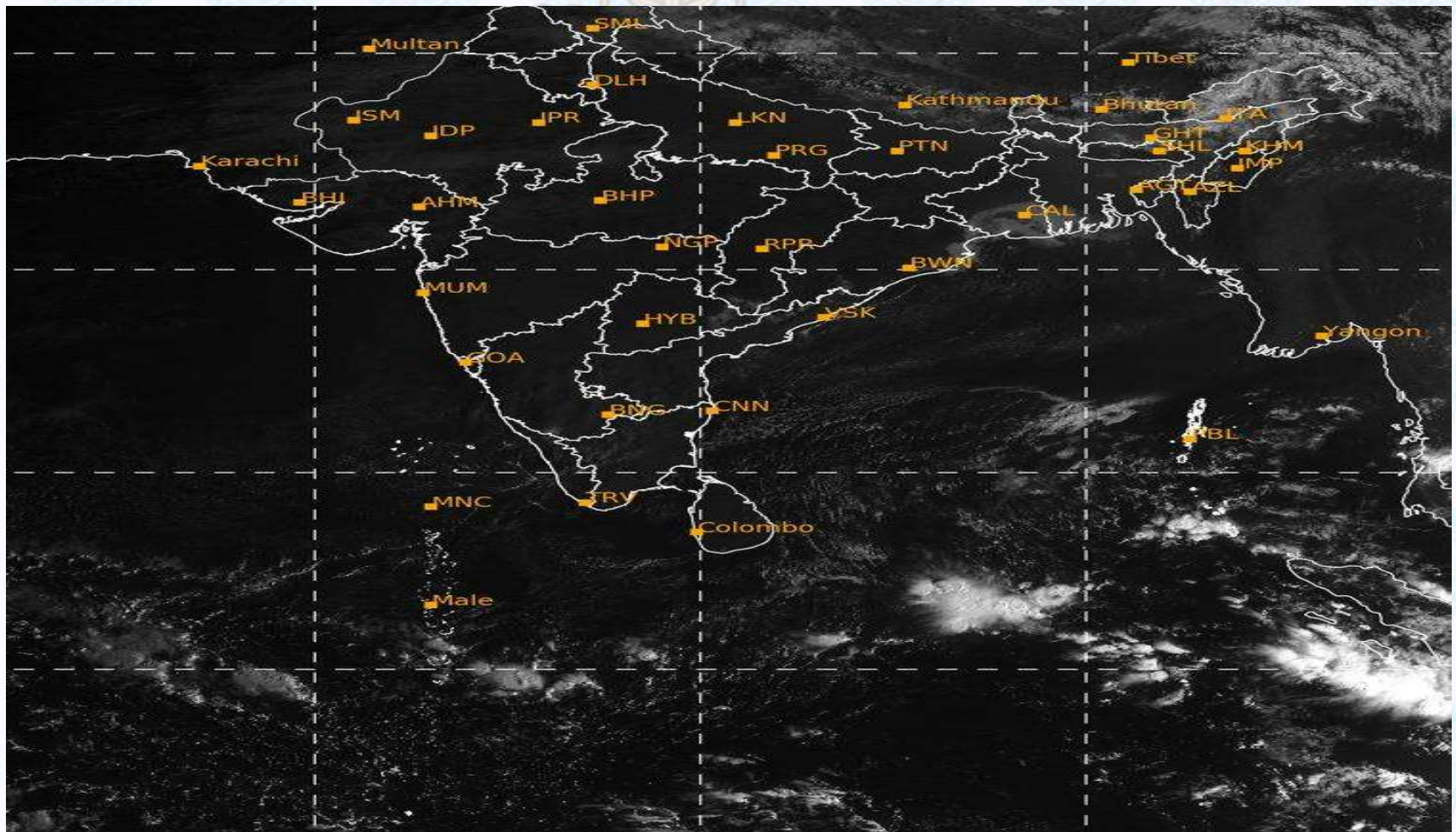


25/02/2020, 11:00 UTC MATSAT-IR

Ref: <http://satellite.imd.gov.in/insat.htm>



SATELLITE VIEW OF BAY OF BENGAL



25/02/2020, 11:00 MATSAT-VIS

Ref: <http://satellite.imd.gov.in/insat.htm>



Fleet Forecast Sea Area C-90 (Valid for 12 Hrs Commencing 1000 UTC of 25.02.2020)

Part One	NO STORM WARNING.	
Part Two	SEASONAL LOW LIES OVER SOUTH BAY.	
Part Three	Weather	PARTLY CLOUDY TO TEMPORARY CLOUDY OVER AREA C-90.
	Wind	NORTH-WEST/WESTERLY, 08-12 KTS.
	Visibility	03-05 KMS, REDUCING TO 1500 M OR LESS IN MIST/HAZE.
	Outlook	FOR SUBSEQUENT 12 HOURS: LITTLE CHANGE.
	MSL Pressure	AT =25,0000 UTC. CHATTOGRAM =1012 HPA



Inland River Port Warning (VALID TILL 06 PM OF 25.02.2020)

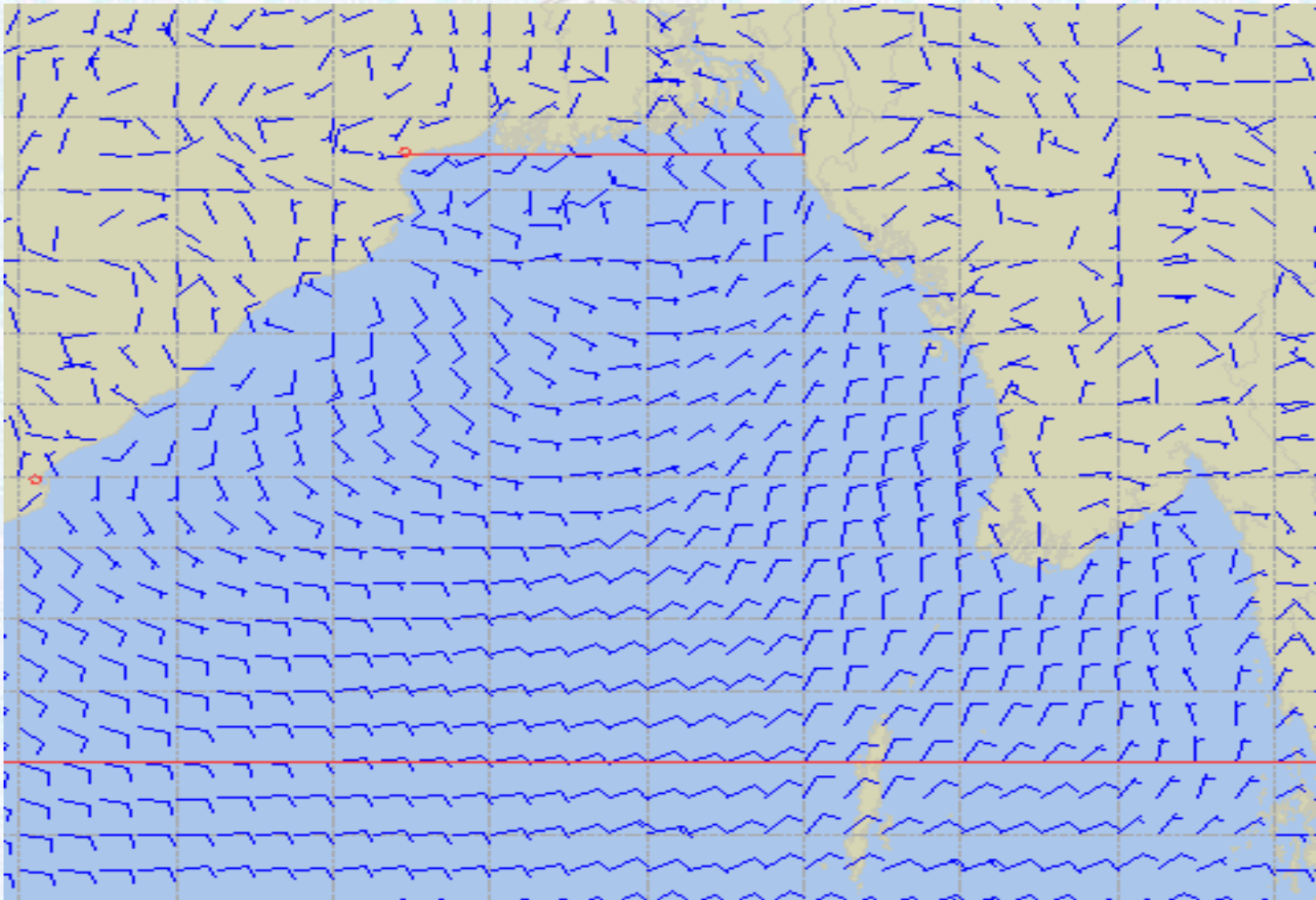
THERE IS NO INLAND RIVERPORTS WARNING AND NO SIGNAL IS TO BE HOISTED.



Ref: <http://www.bmd.gov.bd/?/home>



Surface Wind Forecast- 26 Feb - 2020



Legend:



**Calm
Winds**



5 Knots



10 Knots



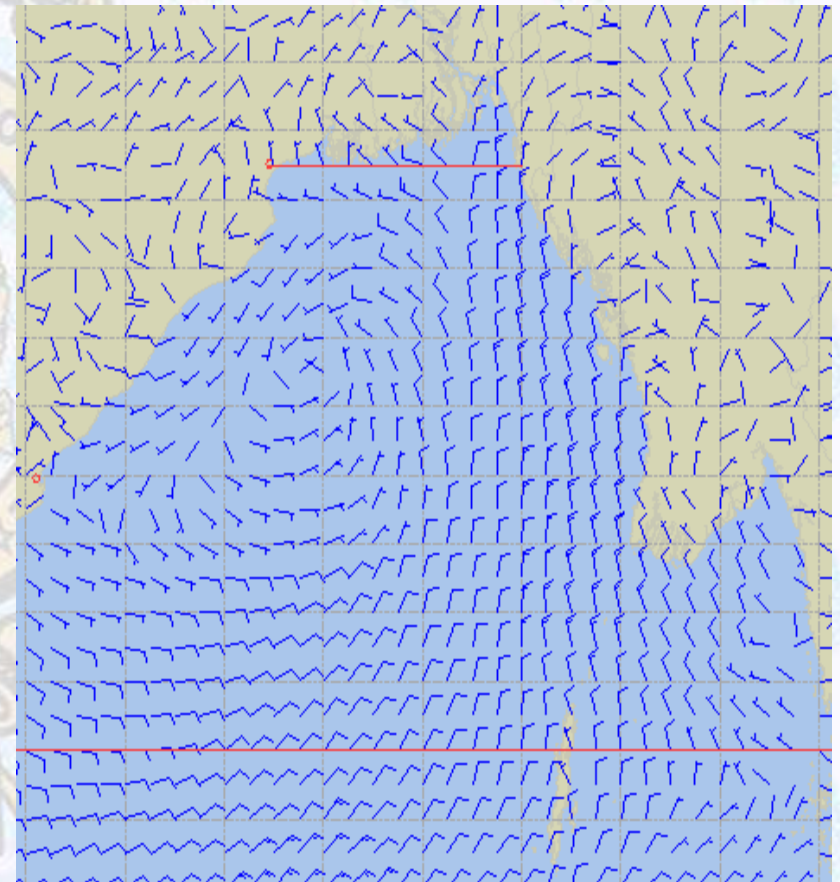
60 Knots



Surface Wind Forecast – 27 & 28 Feb - 2020

27 Feb 2020 Thursday

28 Feb 2020 Friday



Legend:



**Calm
Winds**



5 Knots



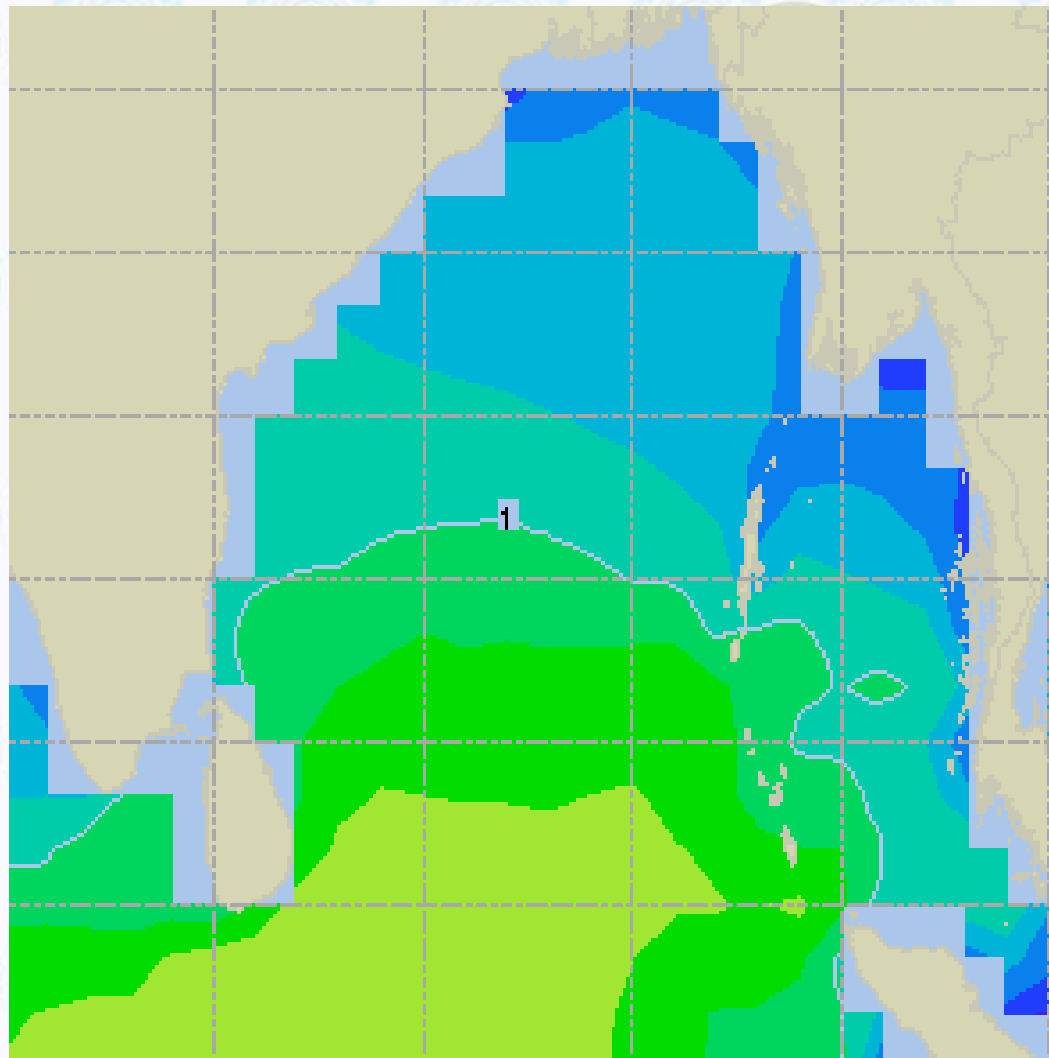
10 Knots



60 Knots



Sea State Forecast - 26 Feb - 2020



Sea State	Ht (m)
0	0-0.1
1	0-0.1
2	0.1-0.5
3	0.5-1.25
4	1.25-2.5
5	2.5-4.0
6	4-6
7	6-9
8	9-14
9	Over 14

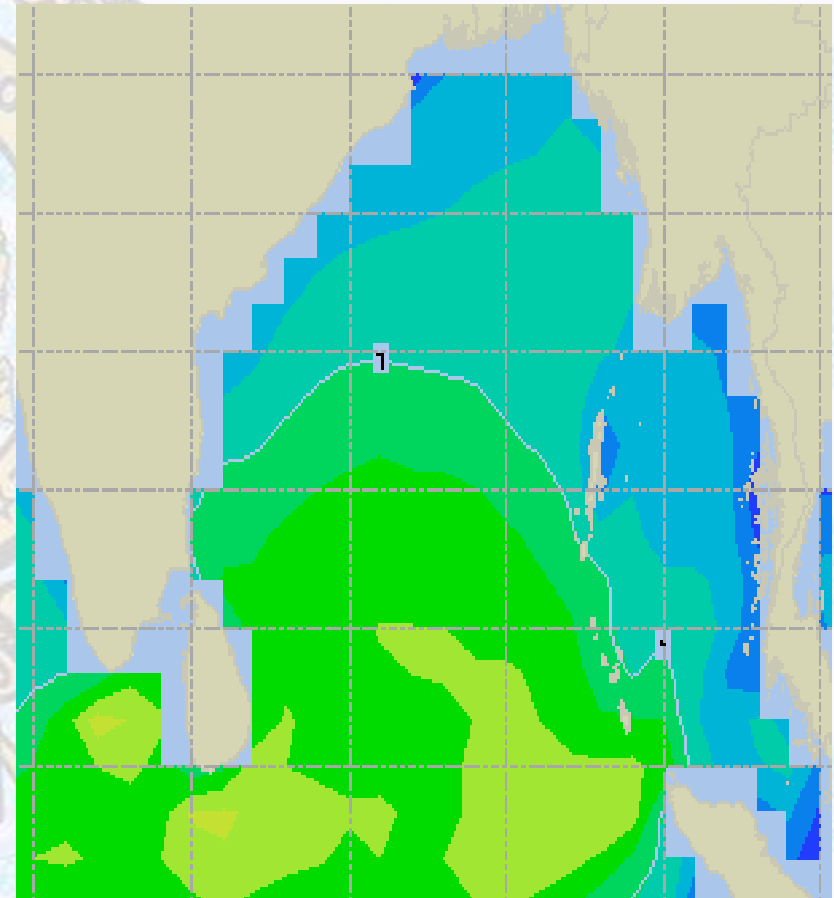
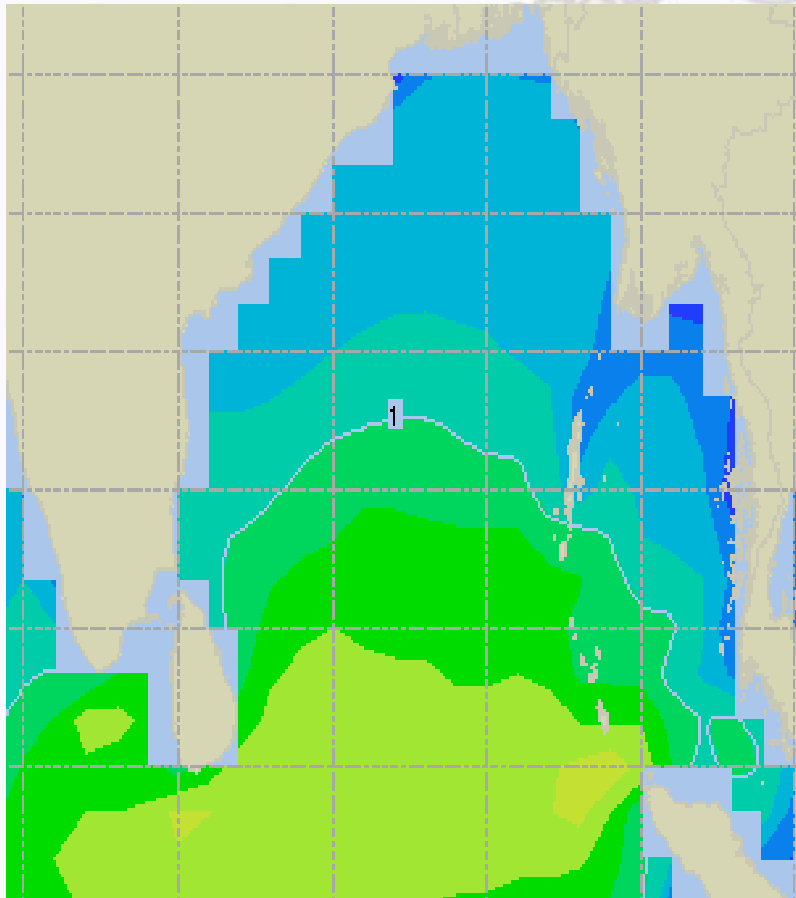




Sea State Forecast - 27 & 28 Feb - 2020

27 Feb 2020 Thursday

28 Feb 2020 Friday

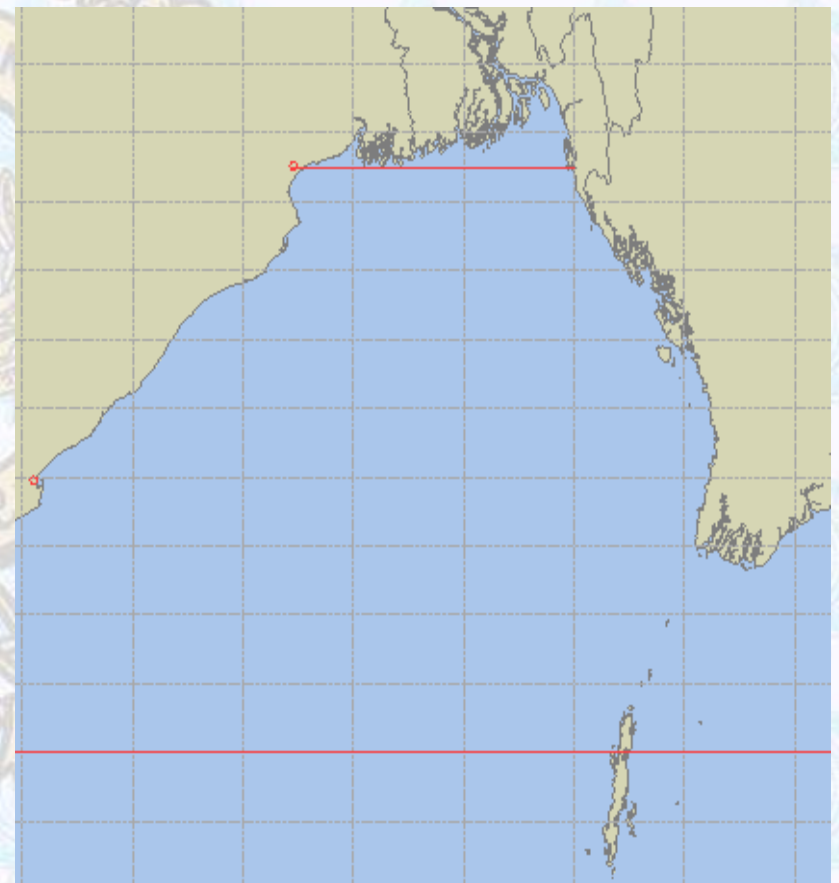
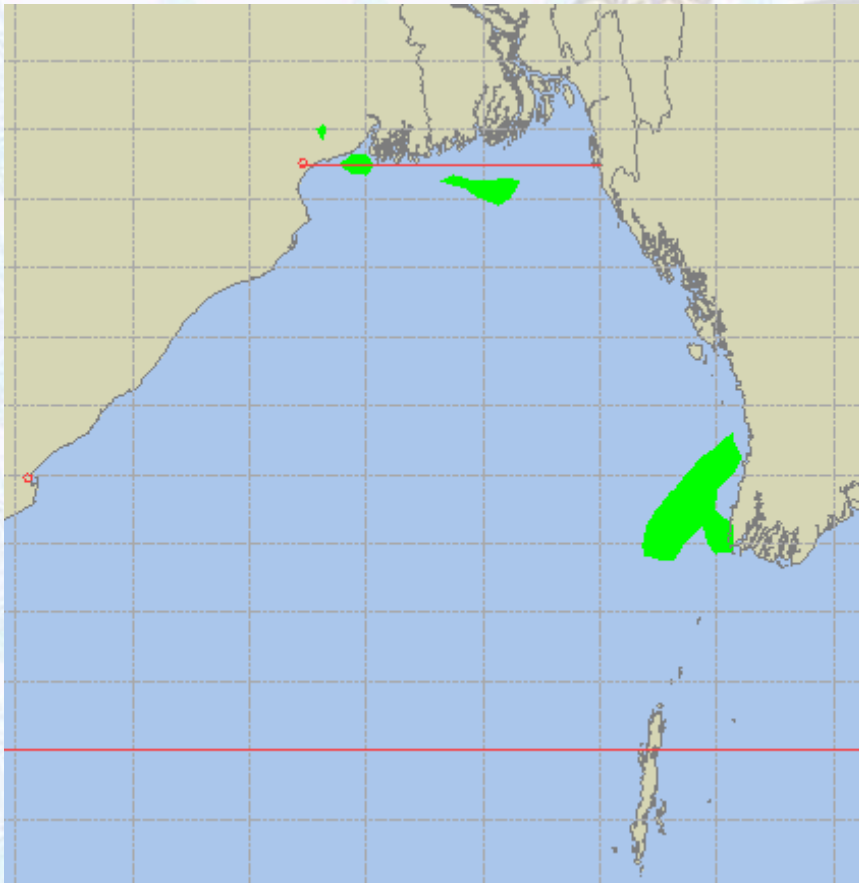




Peak Gusting Possibilities – 26 & 27 Feb - 2020

26 Feb 2020 Wednesday

27 Feb 2020 Thursday

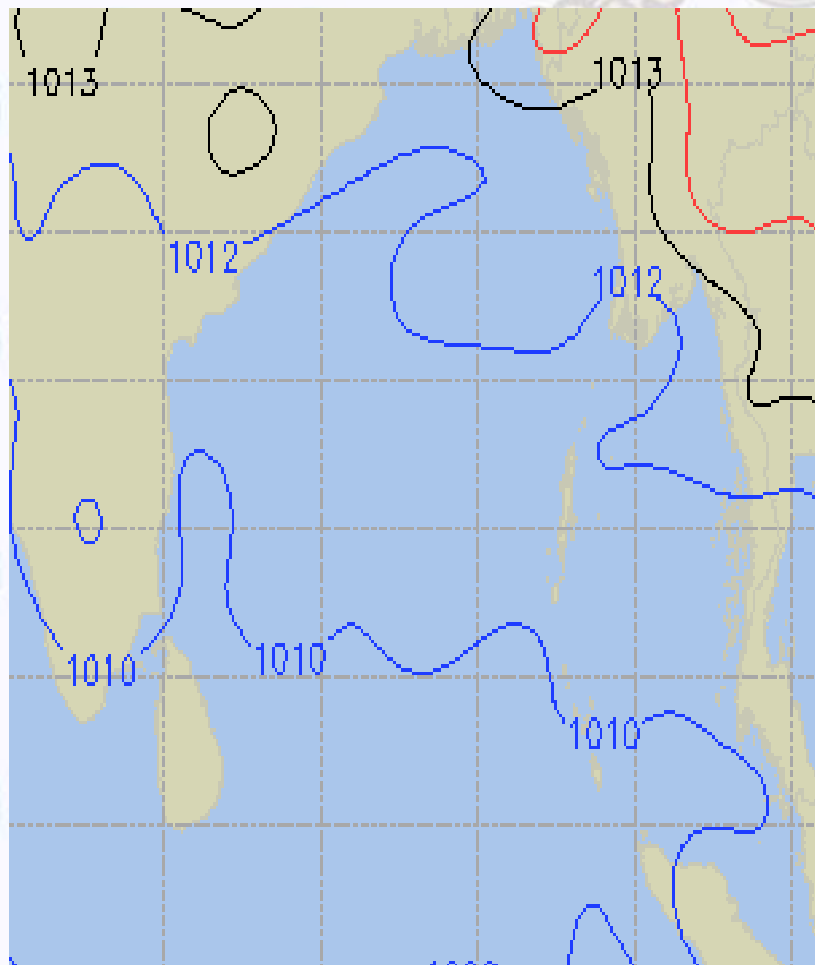




Surface Pressure forecast – 26 & 27 Feb - 2020

26 Feb 2020 Wednesday

27 Feb 2020 Thursday

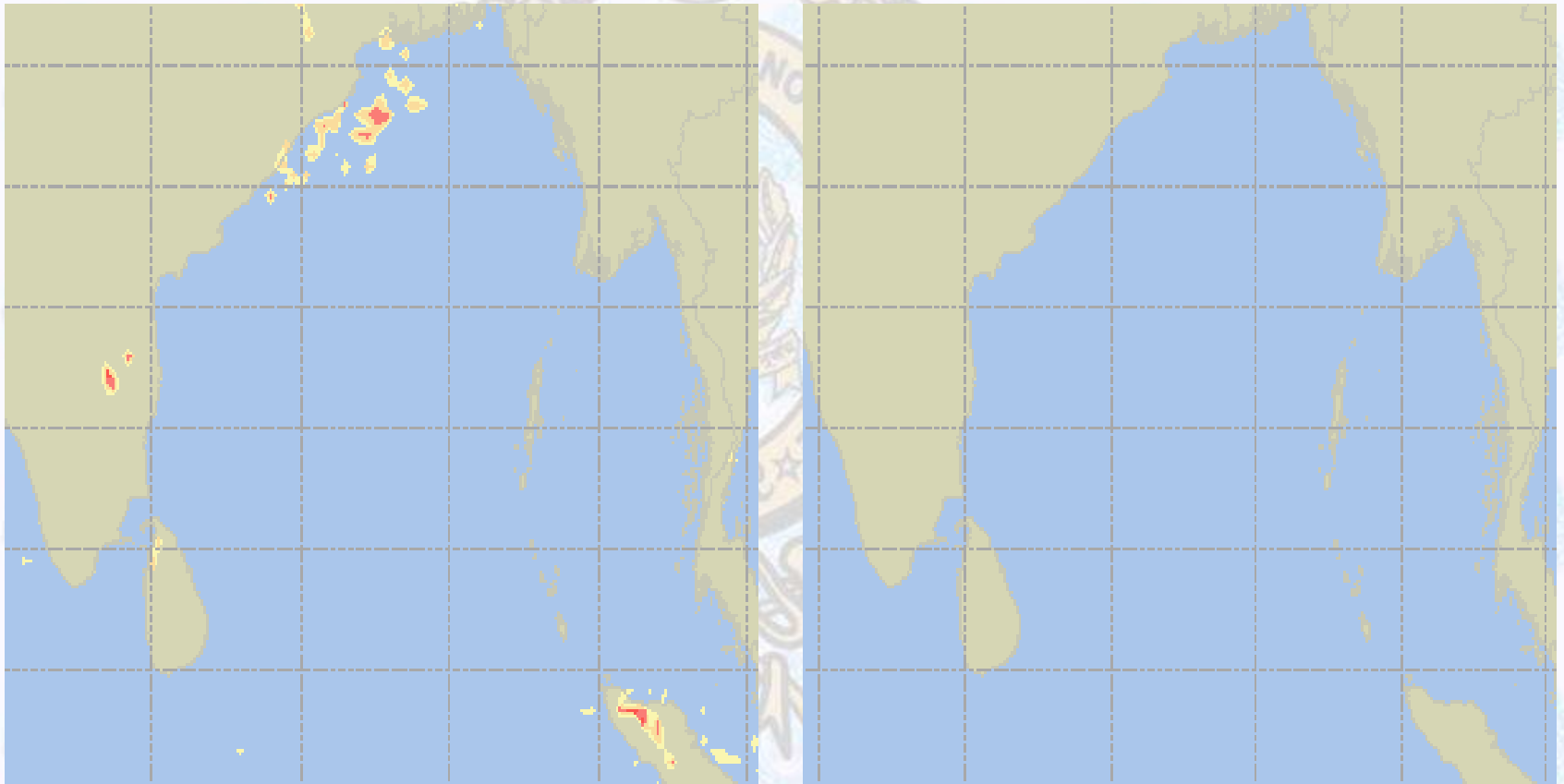




Visibility at Sea Forecast – 26 & 27 Feb - 2020

26 Feb 2020 Wednesday

27 Feb 2020 Thursday



Visibility Scale:



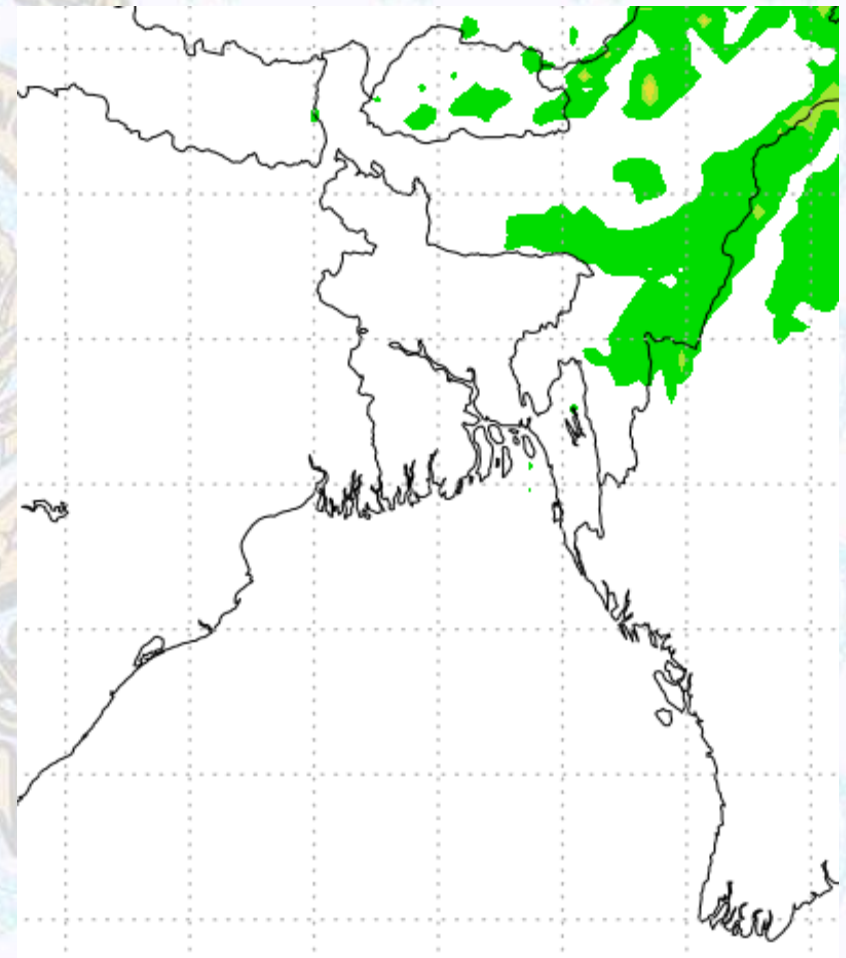
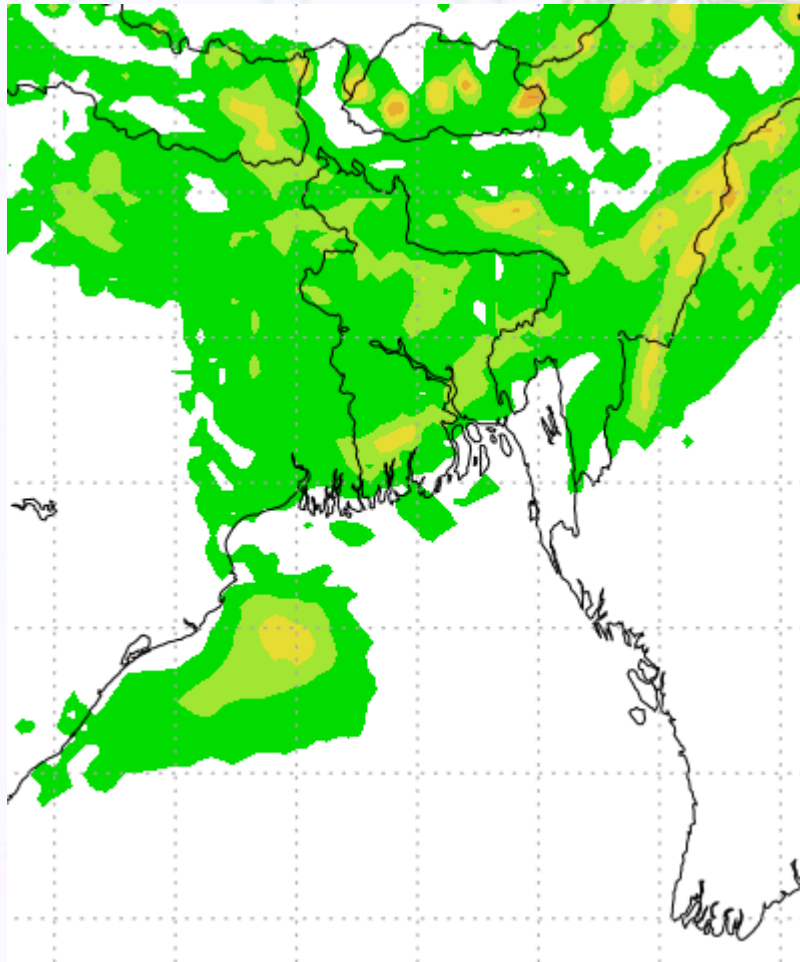
Ref (Slide 12-18): <http://www.weatheronline.co.uk/marine/weather?LEVEL>



Precipitation

Rain(mm) 26 & 27 Feb 20

Rain(mm) 27 & 28 Feb 20



Precipitation Scale (mm):





Tidal Information

KHAL NO. 10

COX'S BAZAR

HIRAN POINT

	Time	Height		Time	Height		Time	Height
		0214		4.30			0007	3.27
26 Feb 2020	0856	0.32		0642	0.20		0627	0.37
	1437	4.09		1222	2.98		1225	2.64
	2100	0.44		1852	0.24		1832	0.47
	Time	Height		Time	Height		Time	Height
		0241		4.28			0037	3.19
27 Feb 2020	0919	0.28		0709	0.22		0650	0.38
	1503	4.10		1253	2.92		1251	2.62
	2128	0.46		1920	0.28		1900	0.54
	Time	Height		Time	Height		Time	Height
		0310		4.18			0108	3.04
28 Feb 2020	0944	0.28		0736	0.27		0714	0.43
	1533	4.05		1325	2.81		1320	2.57
	2158	0.52		1950	0.35		1929	0.64