



WEATHER FORECAST FOR BN

20 - 23 - FEB 2020





WEATHER FORECAST – DHAKA

20.02.2020

Hourly	2 PM	4 PM	8 PM	11 PM
Temp. / Dew Point	29 / 15	27 / 14	23 / 15	21 / 15
Wind	8 km/h W	6 km/h W	1 km/h NE	4 km/h ENE
Humidity	44%	44%	63%	73%
Chance of Precip	1%	1%	1%	2%
Cloud Cover	45%	41%	38%	16%
Conditions	Partly Cloudy	Partly Cloudy	Partly Cloudy	Clear
Sunrise Sunset	6: 30 AM 5: 57 PM			

Conditions

Pressure : 1015 hpa

Visibility : 11.27 km

Ref: <https://www.wunderground.com/weather/bd/dhaka>



WEATHER FORECAST – CHATTOGRAM

20.02.2020

Hourly	2 PM	4 PM	8 PM	11 PM
Temp. / Dew Point	28 / 15	27 / 15	22 / 19	20 / 19
Wind	10 km/h W	12 km/h W	7 km/h W	4 km/h WNW
Humidity	55%	63%	85%	984%
Chance of Precip.	1%	1%	4%	5%
Cloud Cover	1%	1%	1%	10%
Conditions	Sunny	Sunny	Clear	Clear
Sunrise Sunset	6: 23 AM 5: 52 PM			

Conditions

Pressure : 1015 hpa

Visibility : 9.66 Km

Ref: <https://www.wunderground.com/weather/bd/chittagong>



WEATHER FORECAST – KHULNA

20.02.2020

Hourly	2 PM	4 PM	8 PM	11 PM
Temp. / Dew Point	28 / 15	28 / 14	23 / 18	21 / 19
Wind	7 km/h SW	7 km/h SW	7 km/h SSW	5 km/h SSW
Humidity	46%	44%	72%	89%
Chance of Precip.	1%	1%	2%	5%
Cloud Cover	2%	3%	14%	40%
Conditions	Sunny	Sunny	Clear	Clear
Sunrise Sunset	6: 33 AM 6: 02 PM			

Conditions

Pressure : 1015 hpa

Visibility : 14.48 Km

Ref: <https://www.wunderground.com/weather/bd/khulna>



GENERAL WEATHER FORECAST – DHAKA

Description	21 Feb 2020	22 Feb 2020	23 Feb 2020
Temperature (C)	30 °C / 17 °C	31 °C / 18 °C	31 °C / 19 °C
Summary	Partly Cloudy	Partly Cloudy	Partly Cloudy
Sun Rise/Set	6h27m42s/17h56m54s	6h26m54s/17h57m30s	6h26m00s/17h58m06s
Day Length	11h29m12s	11h30m36s	11h32m06s
Moon Rise/ Set	4:56AM 3:58PM	5:41AM 4:52PM	6:20AM 5:45PM
Moon Phase/ illu	Waning Crescent, 3%	Waning Crescent, 0%	New Moon, 0%
NauticalTwilight	0538,1846	0537,1846	0537,1847
Civil Twilight	0604,1819	0604,1820	0603,1820
Humidity	D : 56% N : 73%	D : 56% N : 72%	D : 56% N : 72%
Barometer (mb)	1016	1015	1015
Visibility	Good	Good	Good
Precip Chance	1%	1%	10%
Wind (mph)	9 Km/h NNE	10 Km/h NNW	7 Km/h NW

Ref: <https://weather.com/weather/5day//BGXX0003:1:BG>



GENERAL WEATHER FORECAST– CHATTOGRAM

Description	21 Feb 2020	22 Feb 2020	23 Feb 2020
Temperature (C)	29 °C/ 16 °C	29 °C/ 16 °C	30 °C/ 17 °C
Summary	Partly Cloudy	Sunny	Sunny
Sun Rise/Set	6h20m36s/17h52m24s	6h19m48s/17h52m54s	6h19m00s/17h53m30s
Day Length	11h31m48s	11h33m06s	11h34m30s
Moon Rise/ Set	4:47AM 3:54PM	5:32AM 4:48PM	6:12AM 5:41PM
Moon Phase/ illu	Waning Crescent, 3%	Waning Crescent, 0%	New Moon, 0%
NauticalTwilight	0531, 1841	0531, 1841	0530, 1842
Civil Twilight	0558,1815	0557,1815	0556,1816
Humidity	D : 59% N : 78%	D : 60% N : 84%	D : 62% N : 86%
Barometer (mb)	1016	1018	1018
Visibility	Good	Good	Good
Precip Chance	0%	0%	0%
Wind (mph)	9 km/h NNW	10 km/h NW	9 km/h WNW

Ref: <https://weather.com/weather/5day//BGXX0002:1:BG>



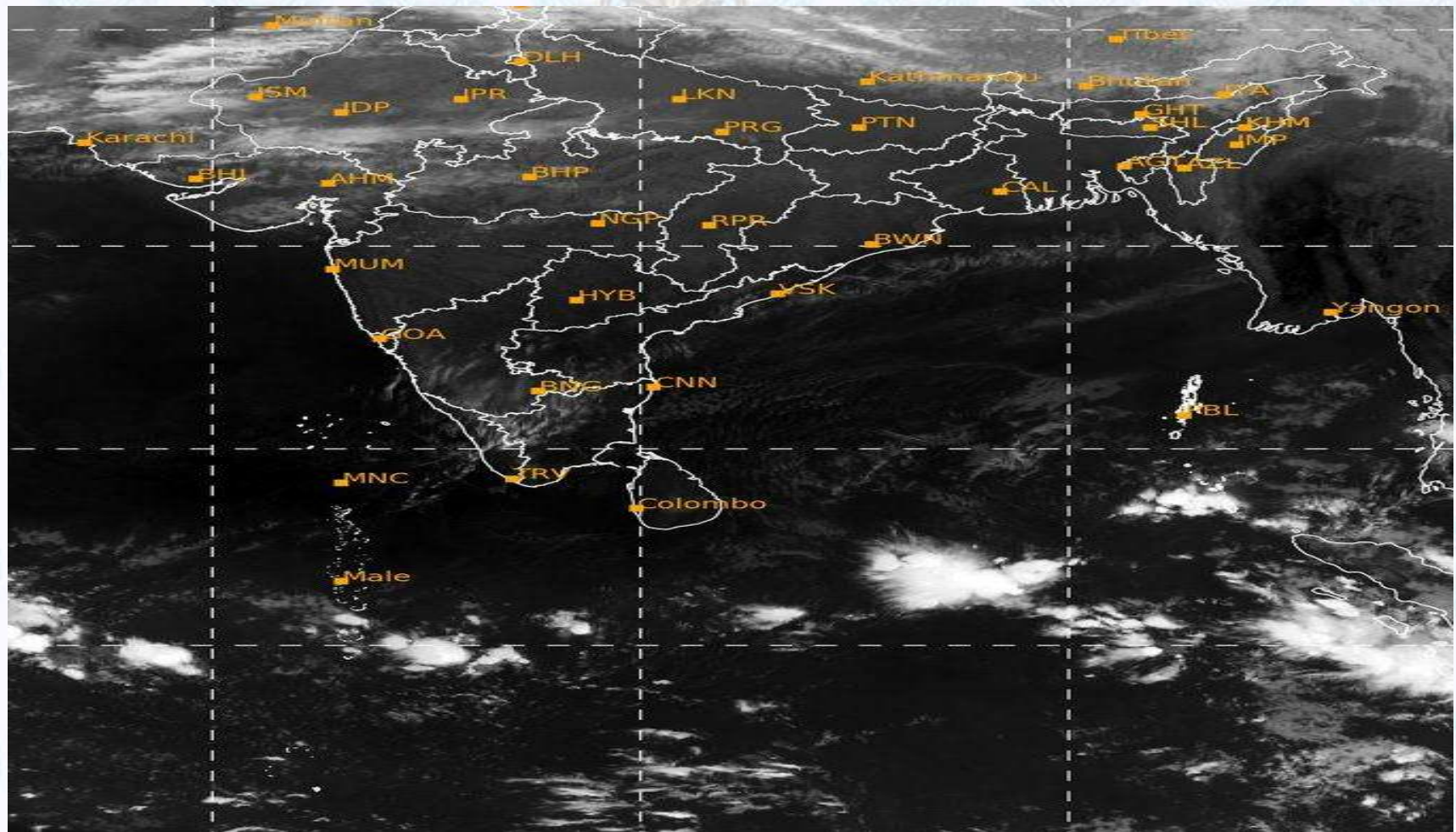
GENERAL WEATHER FORECAST – KHULNA

Description	21 Feb 2020	22 Feb 2020	23 Feb 2020
Temperature(C)	30 °C/ 17 °C	31 °C/ 18 °C	31 °C/ 19 °C
Summary	Partly Cloudy	Partly Cloudy	Sunny
Sun Rise/Set	6h30m12s/18h01m06s	6h29m24s/18h01m36s	6h28m36s/18h02m12s
Day Length	11h30m54s	11h32m12s	11h33m36s
Moon Rise/Set	4:58AM 4:04PM	5:43AM 4:58PM	6:23AM 5:51PM
Moon Phase/illu	Waning Crescent, 3%	Waning Crescent, 0%	New Moon, 0%
Nautical Twilight	0541, 1850	0540, 1850	0539, 1851
Civil Twilight	0607.,1823	0606.,1824	0606.,1824
Humidity	D : 57% N : 73%	D : 58% N : 72%	D : 57% N : 82%
Barometer (mb)	1016	1018	1018
Visibility	Good	Good	Good
Precip Chance	10%	10%	1%
Wind (mph)	10 km/h NNE	14 km/h NNW	8 km/h N

Ref: <https://weather.com/weather/5day//BGXX0005:1:BG>



SATELLITE VIEW OF BAY OF BENGAL

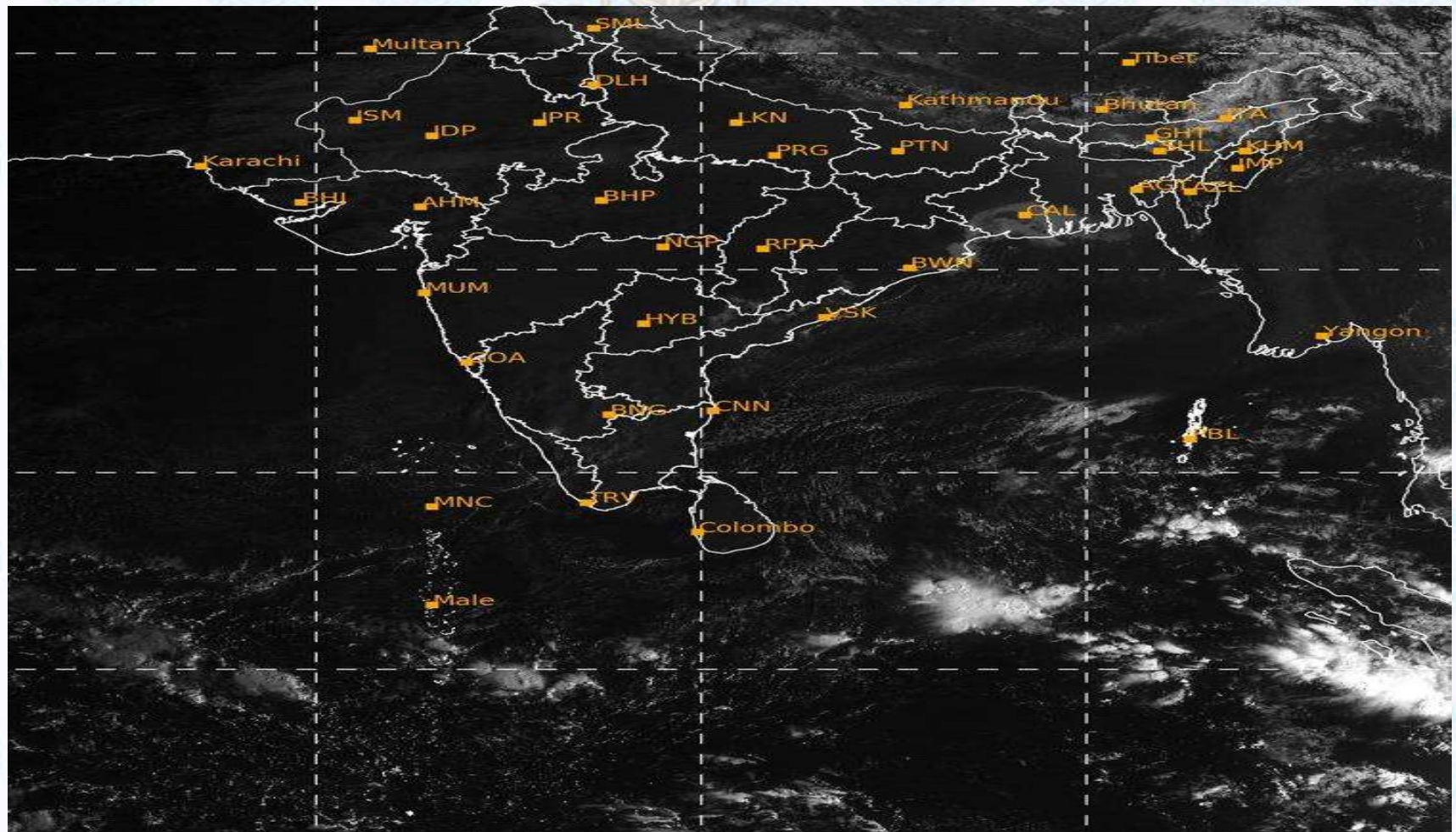


20/02/2020, 11:00 UTC MATSAT-IR

Ref: <http://satellite.imd.gov.in/insat.htm>



SATELLITE VIEW OF BAY OF BENGAL



20/02/2020, 11:00 MATSAT-VIS

Ref: <http://satellite.imd.gov.in/insat.htm>



Fleet Forecast Sea Area C-90 (Valid for 12 Hrs Commencing 1000 UTC of 20.02.2020)

Part One	NO STORM WARNING.	
Part Two	SEASONAL LOW LIES OVER SOUTH BAY.	
Part Three	Weather	TEMPORARY PARTLY CLOUDY SKY OVER AREA C-90.
	Wind	W/NWLY, 08-12 KTS.
	Visibility	03-05 KMS, REDUCING TO 1500 M OR LESS IN MIST/HAZE.
	Outlook	FOR SUBSEQUENT 12 HOURS: LITTLE CHANGE.
	MSL Pressure	AT =20,0000 UTC. CHATTOGRAM =1013 HPA



Inland River Port Warning (VALID TILL 06 PM OF 20.02.2020)

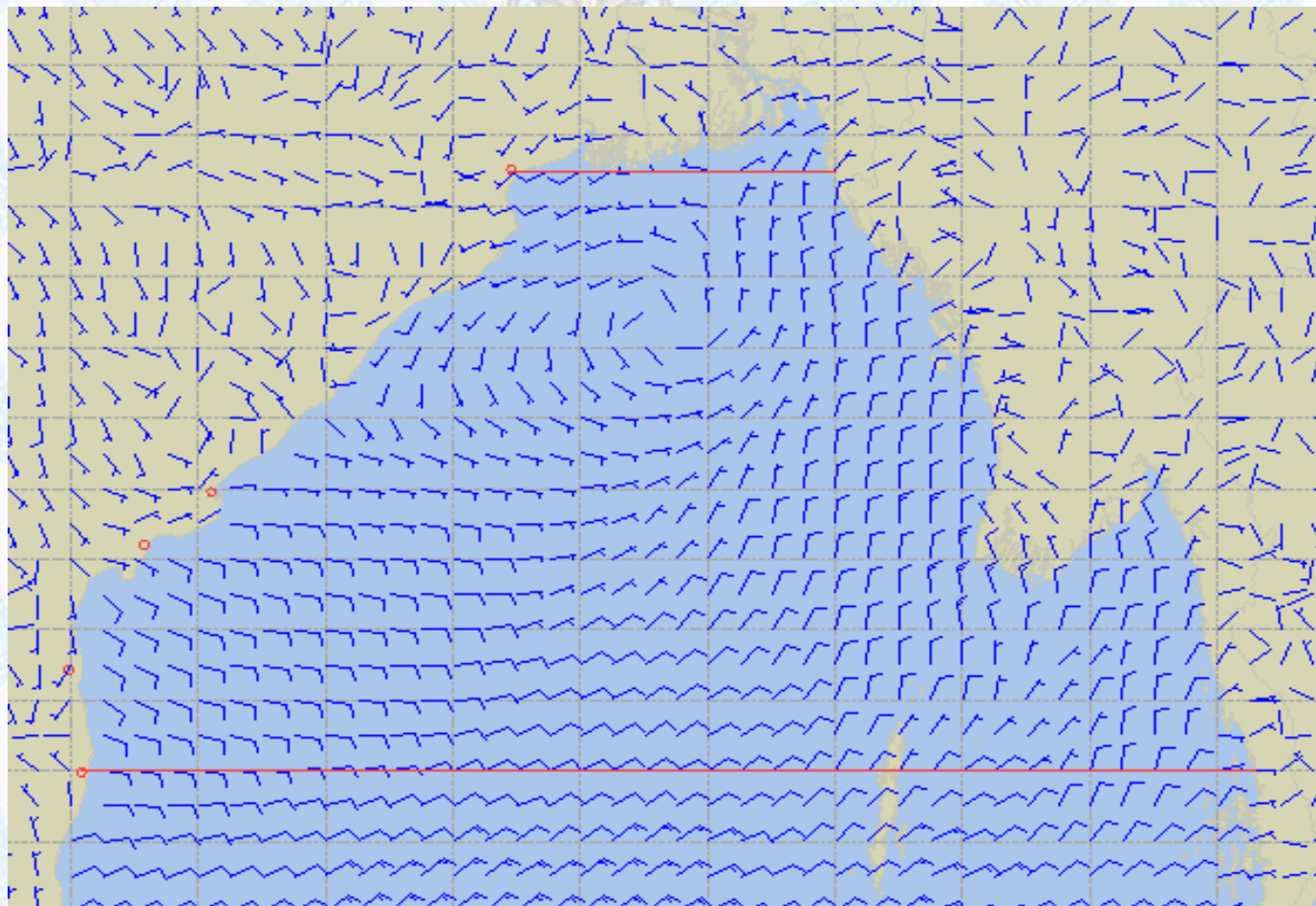
THERE IS NO INLAND RIVERPORTS WARNING & NO SIGNAL IS TO BE HOISTED.



Ref: <http://www.bmd.gov.bd/?/home>



Surface Wind Forecast- 21 Feb - 2020



Legend:



**Calm
Winds**



5 Knots



10 Knots



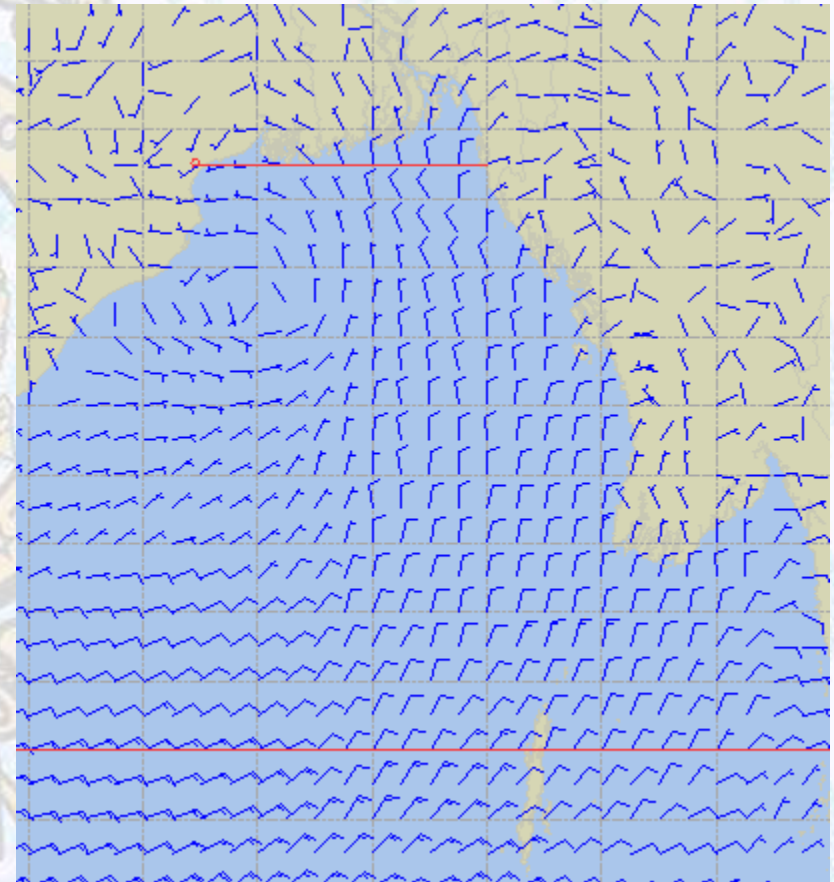
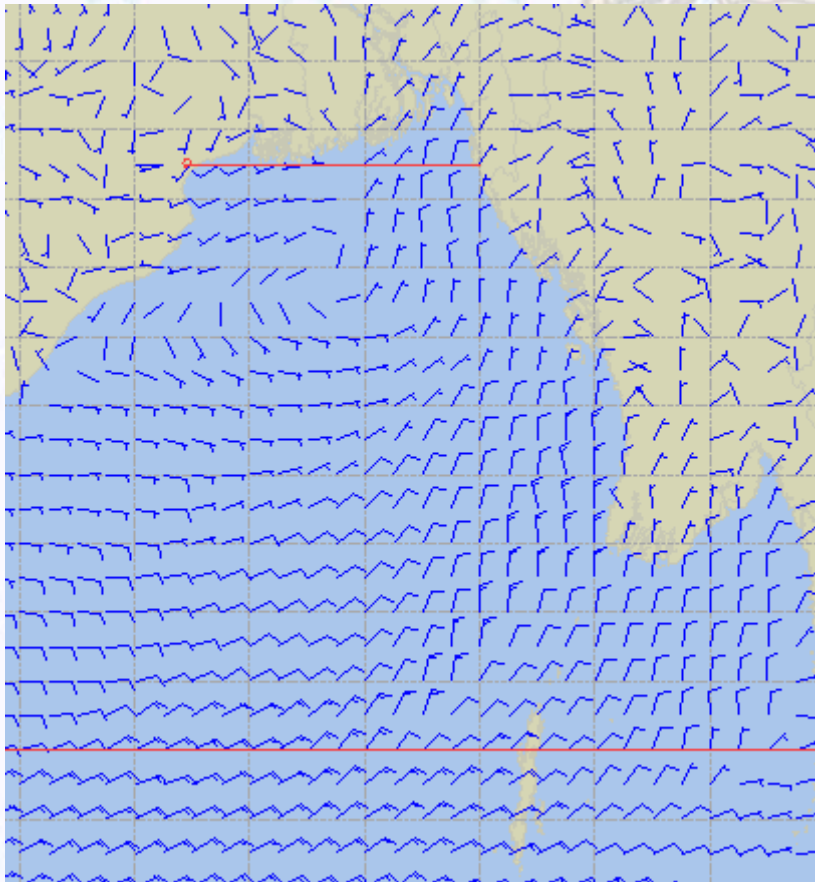
60 Knots



Surface Wind Forecast – 22 & 23 Feb - 2020

22 Feb 2020 Saturday

23 Feb 2020 Sunday



Legend:



**Calm
Winds**



5 Knots



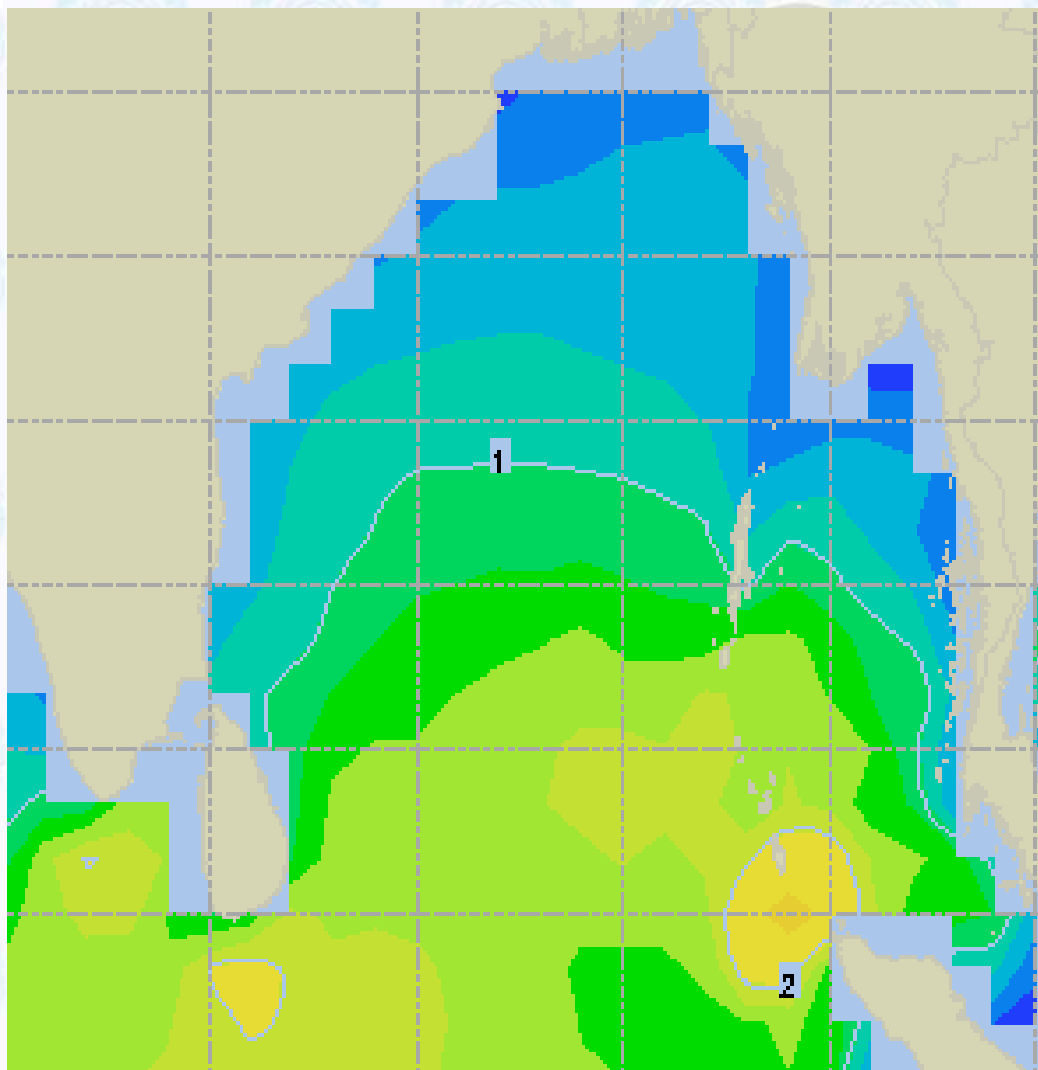
10 Knots



60 Knots



Sea State Forecast - 21 Feb - 2020



Sea State	Ht (m)
0	0-0.1
1	0-0.1
2	0.1-0.5
3	0.5-1.25
4	1.25-2.5
5	2.5-4.0
6	4-6
7	6-9
8	9-14
9	Over 14

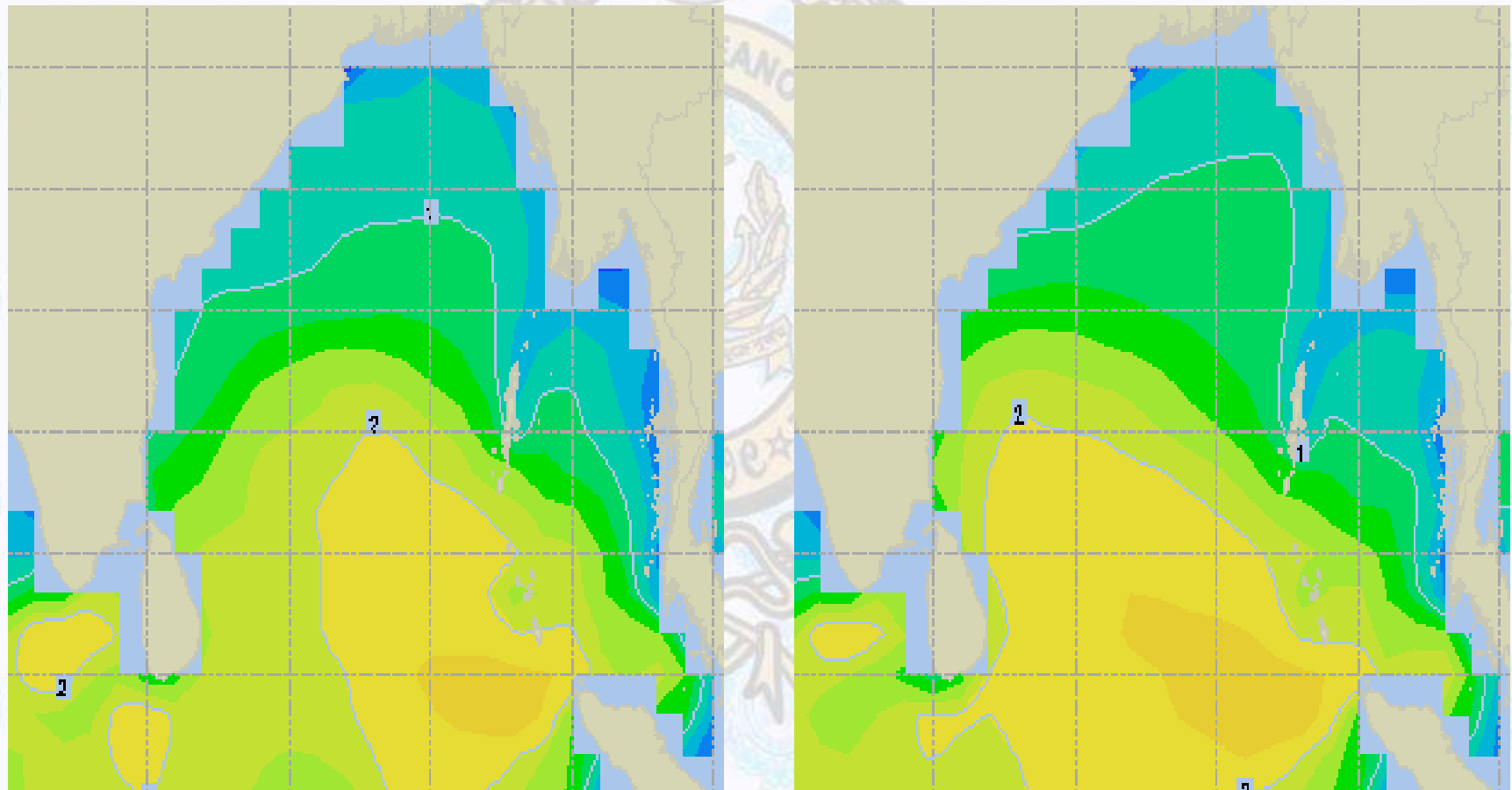




Sea State Forecast - 22 & 23 Feb - 2020

22 Feb 2020 Saturday

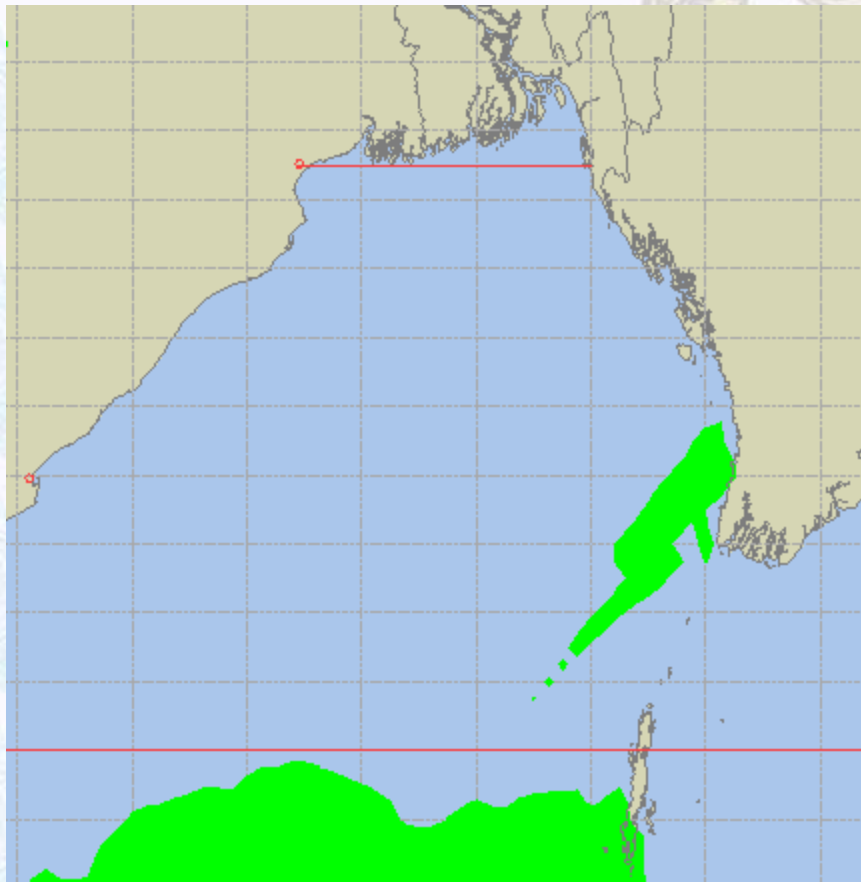
23 Feb 2020 Sunday



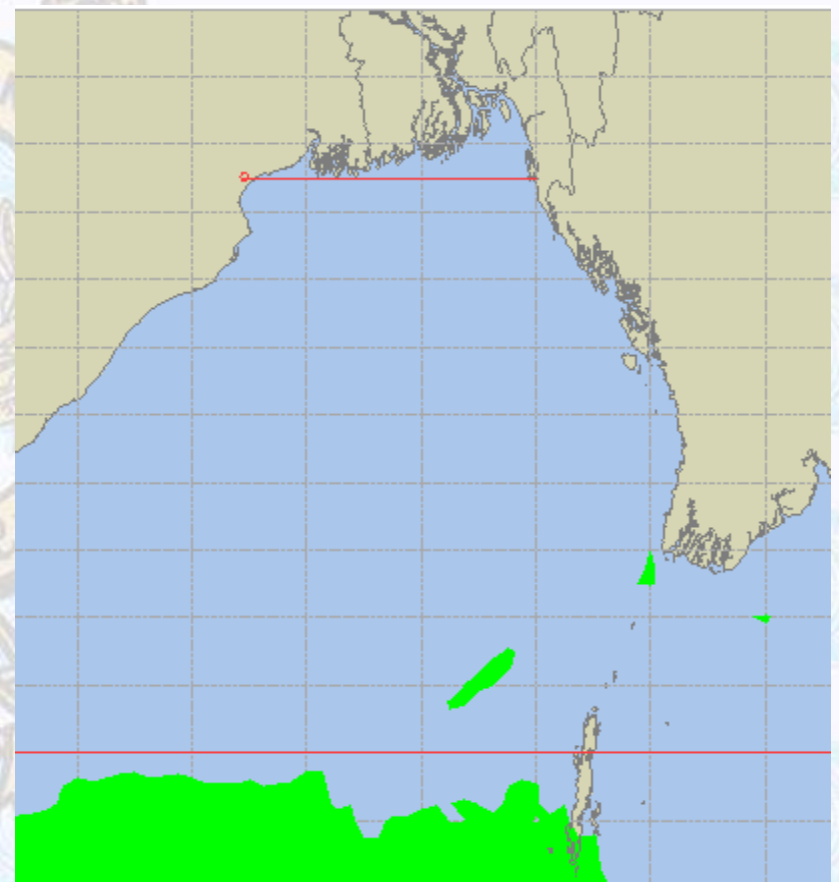


Peak Gusting Possibilities – 21 & 22 Feb - 2020

21 Feb 2020 Friday



22 Feb 2020 Saturday

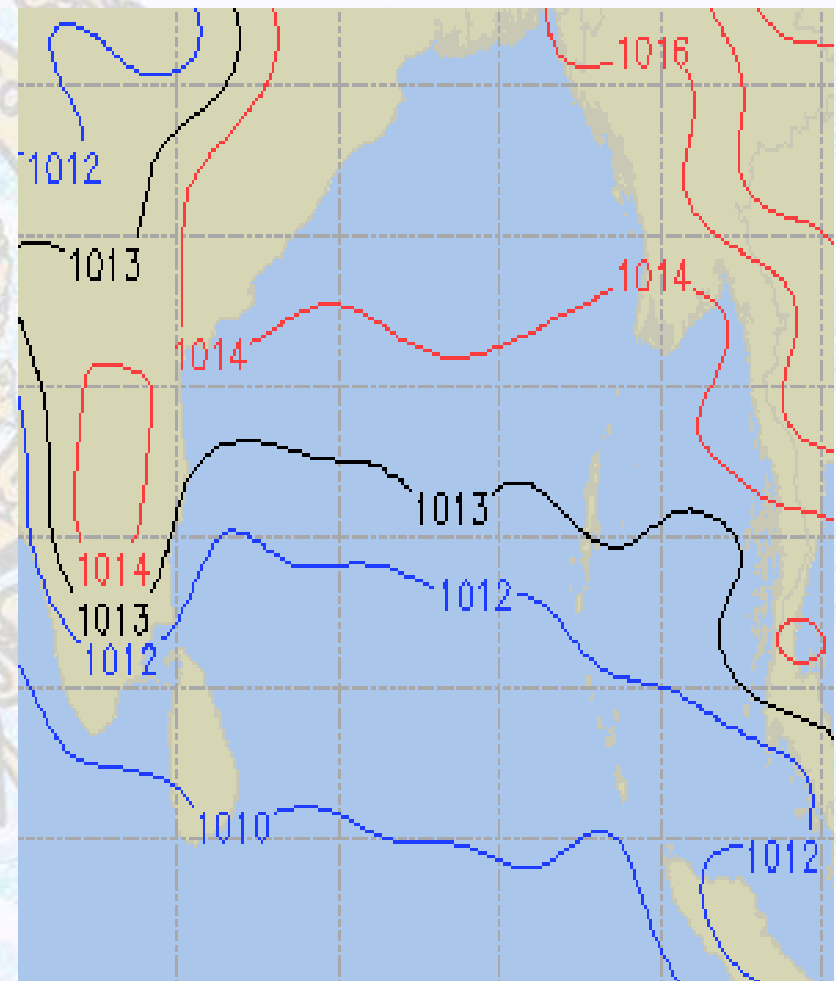
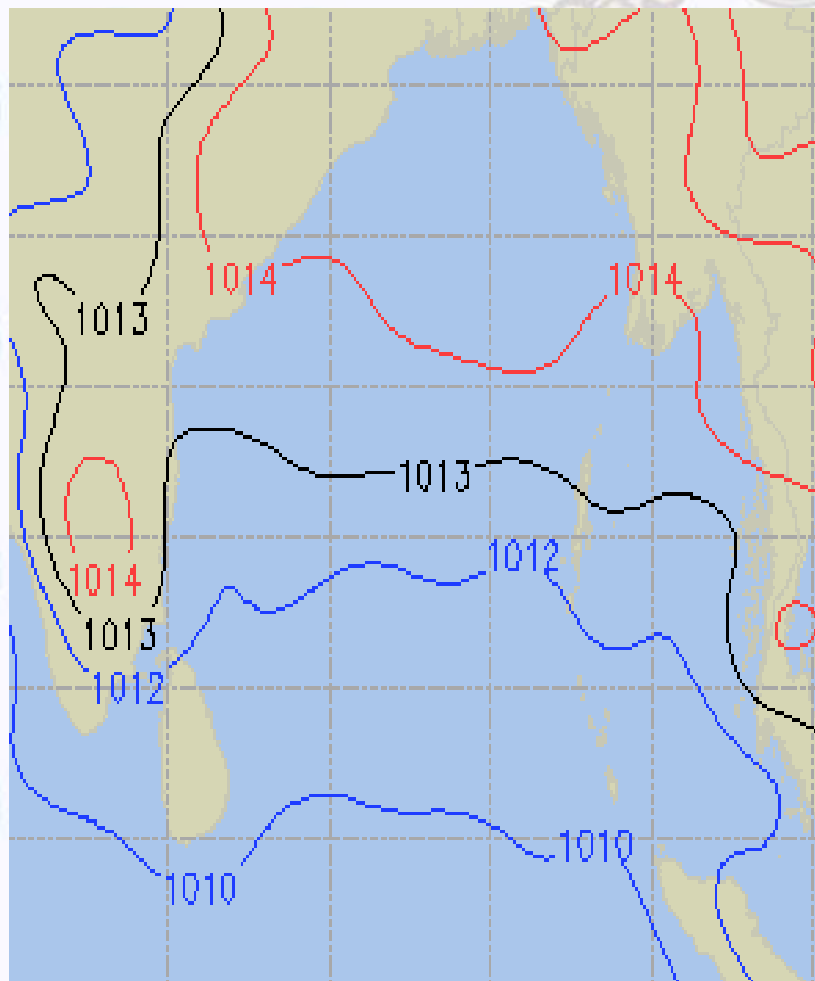




Surface Pressure forecast – 21 & 22 Feb - 2020

21 Feb 2020 Friday

22 Feb 2020 Saturday

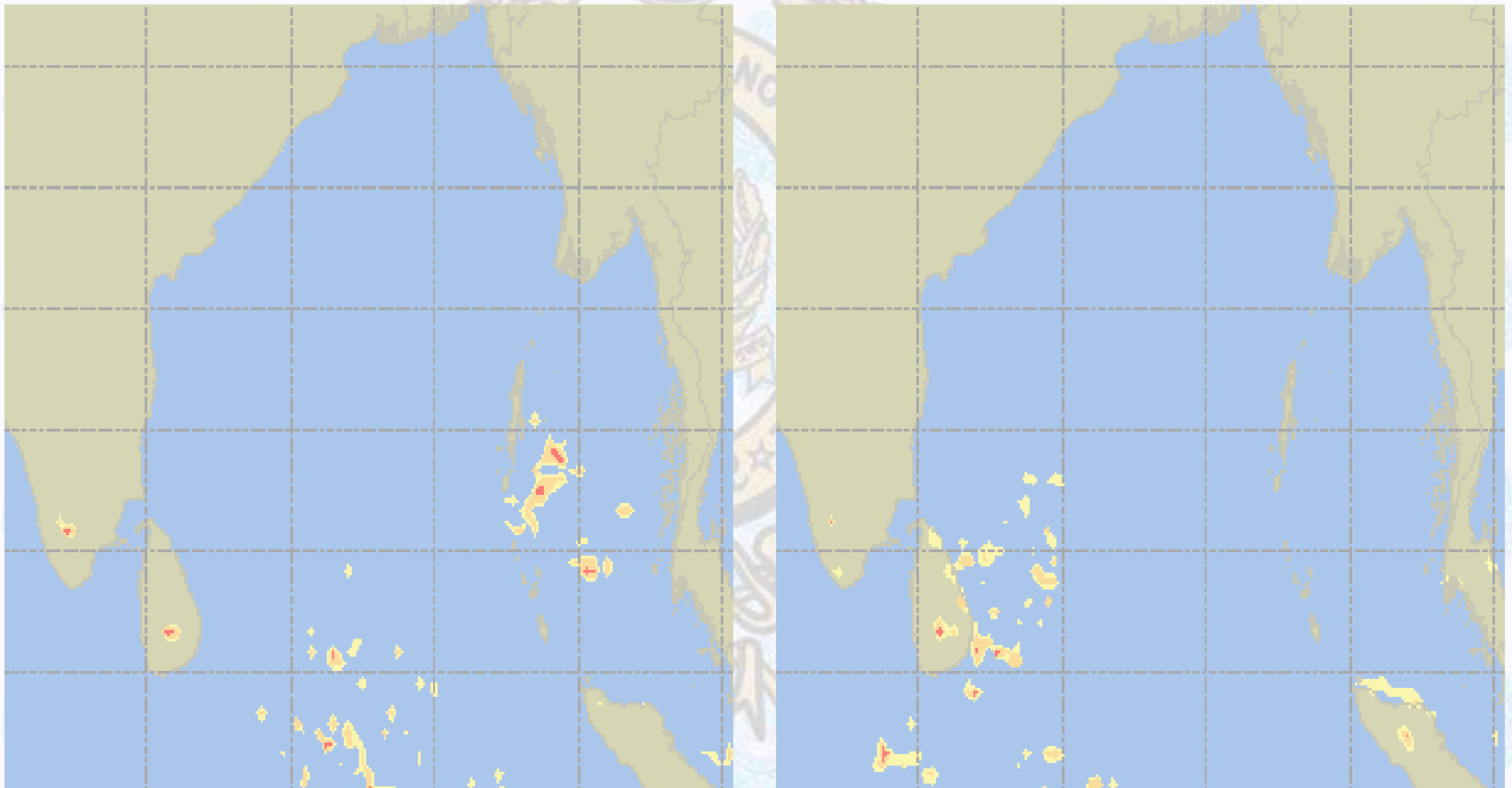




Visibility at Sea Forecast – 21 & 22 Feb - 2020

21 Feb 2020 Friday

22 Feb 2020 Saturday



Visibility Scale:

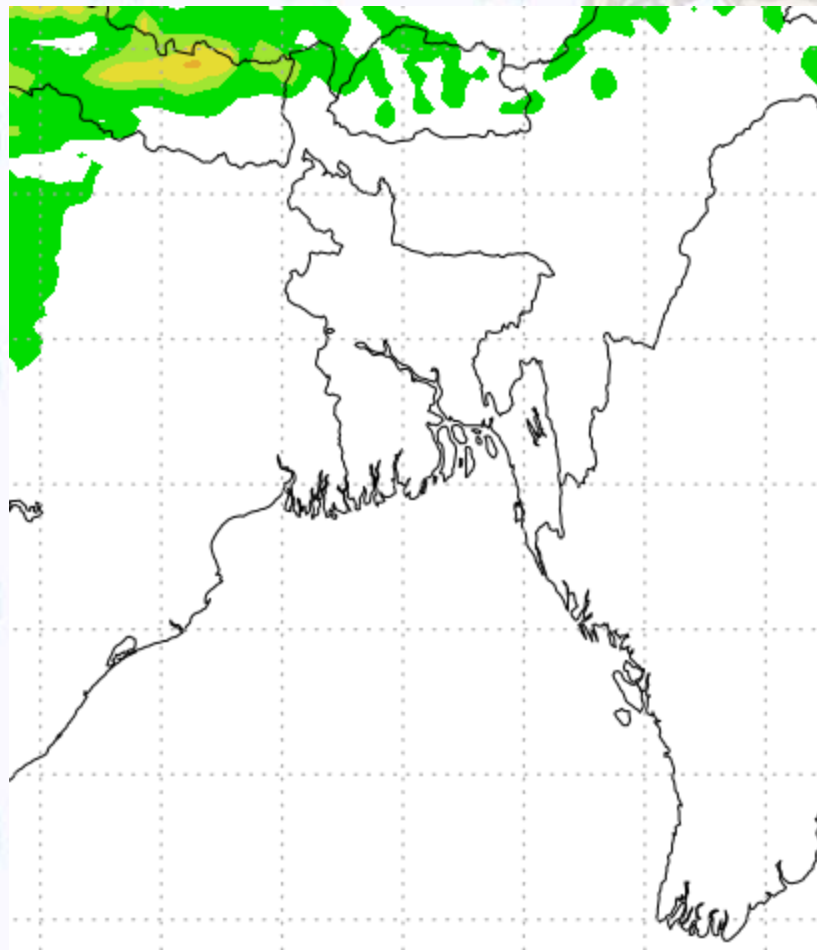


Ref (Slide 12-18): <http://www.weatheronline.co.uk/marine/weather?LEVEL>

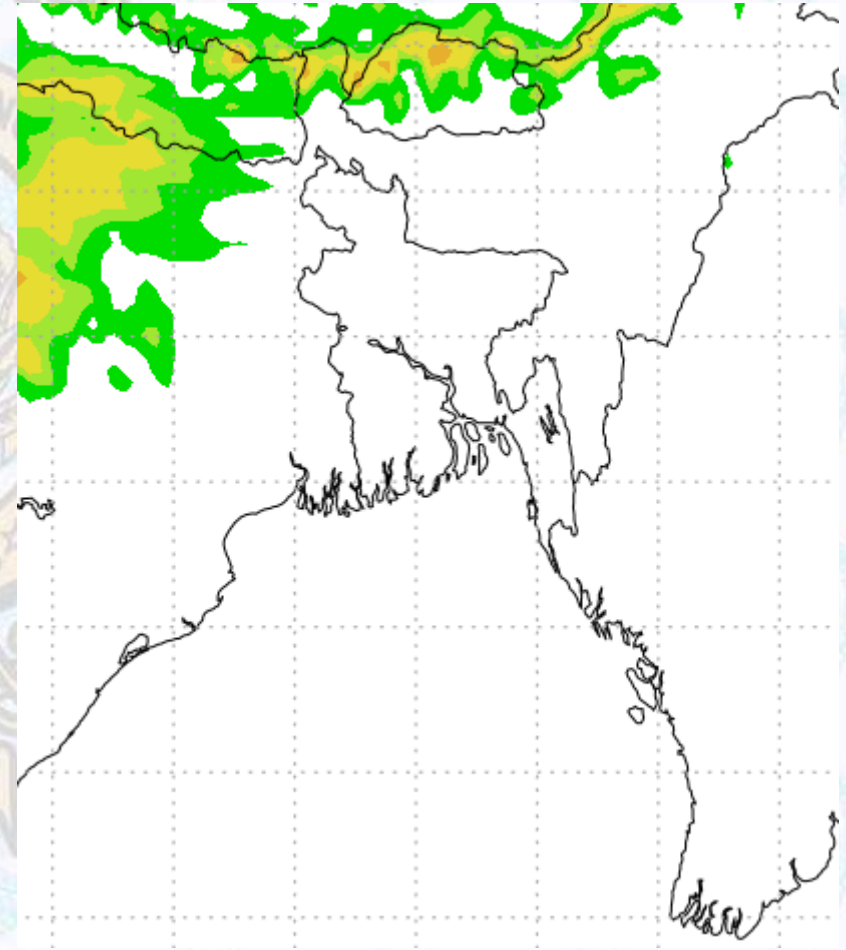


Precipitation

Rain(mm) 21 & 22 Feb 20



Rain(mm) 22 & 23 Feb 20



Precipitation Scale (mm):





Tidal Information

KHAL NO. 10

COX'S BAZAR

HIRAN POINT

21Feb 2020	Time	Height		Time	Height		Time	Height
	0630	0.54		0347	0.56		0402	0.69
	1227	3.55		0930	2.48		0959	2.32
	1832	0.70		1601	0.47		1600	0.63
	-	-		2148	2.92		2214	2.67
22Feb 2020	Time	Height		Time	Height		Time	Height
	0032	3.97		0432	0.43		0439	0.56
	0708	0.47		1010	2.68		1034	2.45
	1300	3.70		1643	0.36		1637	0.53
	1909	0.61		2227	3.10		2246	2.75
23Feb 2020	Time	Height		Time	Height		Time	Height
	0102	4.08		0510	0.32		0510	0.46
	0740	0.43		1046	2.48		1105	2.54
	1327	3.83		1720	0.28		1710	0.46
	1940	0.55		2303	3.22		2315	2.78