



WEATHER FORECAST FOR BN

19 - 22 - FEB 2020





WEATHER FORECAST – DHAKA

19.02.2020

Hourly	2 PM	4 PM	8 PM	11 PM
Temp. / Dew Point	28 / 15	28 / 14	23 / 15	20 / 15
Wind	8 km/h W	6 km/h W	1 km/h ESE	4 km/h SSE
Humidity	44%	44%	63%	73%
Chance of Precip	1%	1%	1%	2%
Cloud Cover	5%	1%	8%	36%
Conditions	Sunny	Sunny	Clear	Clear
Sunrise Sunset	6: 30 AM 5: 57 PM			

Conditions

Pressure : 1015 hpa

Visibility : 11.27 km

Ref: <https://www.wunderground.com/weather/bd/dhaka>



WEATHER FORECAST – CHATTOGRAM

19.02.2020

Hourly	2 PM	4 PM	8 PM	11 PM
Temp. / Dew Point	27 / 17	26 / 18	22 / 19	20 / 19
Wind	10 km/h W	12 km/h W	7 km/h W	4 km/h WNW
Humidity	55%	63%	85%	94%
Chance of Precip.	1%	1%	4%	5%
Cloud Cover	1%	1%	1%	10%
Conditions	Sunny	Sunny	Clear	Clear
Sunrise Sunset	6: 23 AM 5: 52 PM			

Conditions

Pressure : 1015 hpa

Visibility : 9.66 Km

Ref: <https://www.wunderground.com/weather/bd/chittagong>



WEATHER FORECAST – KHULNA

19.02.2020

Hourly	2 PM	4 PM	8 PM	11 PM
Temp. / Dew Point	28 / 15	28 / 14	23 / 18	21 / 19
Wind	7 km/h SW	7 km/h SW	7 km/h SSW	5 km/h SSW
Humidity	46%	44%	72%	89%
Chance of Precip.	1%	1%	2%	5%
Cloud Cover	2%	3%	14%	40%
Conditions	Sunny	Sunny	Clear	Clear
Sunrise Sunset	6: 33 AM 6: 02 PM			

Conditions

Pressure : 1015 hpa

Visibility : 14.48 Km

Ref: <https://www.wunderground.com/weather/bd/khulna>



GENERAL WEATHER FORECAST – DHAKA

Description	20 Feb 2020	21 Feb 2020	22 Feb 2020
Temperature (C)	29 °C / 17 °C	31 °C / 17 °C	31 °C / 18 °C
Summary	Partly Cloudy/Sunny	Partly Cloudy/Sunny	Partly Cloudy/Sunny
Sun Rise/Set	6h28m36s/17h56m18s	6h27m42s/17h56m54s	6h26m54s/17h57m30s
Day Length	11h27m42s	11h29m12s	11h30m36s
Moon Rise/ Set	4:07AM 3:03PM	4:56AM 3:58PM	5:41AM 4:52PM
Moon Phase/ illu	Waning Crescent, 8%	Waning Crescent, 3%	Waning Crescent, 0%
NauticalTwilight	0539,1845	0538,1846	0537,1846
Civil Twilight	0605,1819	0604,1819	0604,1820
Humidity	D : 62% N : 78%	D : 56% N : 73%	D : 56% N : 72%
Barometer (mb)	1015	1016	1018
Visibility	Good	Good	Good
Precip Chance	10%	10%	1%
Wind (mph)	5 Km/h W	8 Km/h NNE	12 Km/h NNW

Ref: <https://weather.com/weather/5day//BGXX0003:1:BG>



GENERAL WEATHER FORECAST– CHATTOGRAM

Description	20 Feb 2020	21 Feb 2020	22 Feb 2020
Temperature (C)	29 °C/ 16 °C	30 °C/ 16 °C	31 °C/ 16 °C
Summary	Partly Cloudy/Sunny	Partly Cloudy/Sunny	Partly Cloudy/Sunny
Sun Rise/Set	6h21m24s/17h51m48s	6h20m36s/17h52m24s	6h19m48s/17h52m54s
Day Length	11h30m24s	11h31m48s	11h33m06s
Moon Rise/ Set	3:58AM 3:00PM	4:47AM 3:54PM	5:32AM 4:48PM
Moon Phase/ illu	Waning Crescent, 8%	Waning Crescent, 3%	Waning Crescent, 0%
NauticalTwilight	0532, 1840	0531, 1841	0531, 1841
Civil Twilight	0558,1814	0558,1815	0557,1815
Humidity	D : 66% N : 83%	D : 57% N : 76%	D : 55% N : 82%
Barometer (mb)	1016	1016	1018
Visibility	Good	Good	Good
Precip Chance	10%	1%	1%
Wind (mph)	10 km/h NNW	8 km/h NNW	9 km/h NW

Ref: <https://weather.com/weather/5day//BGXX0002:1:BG>



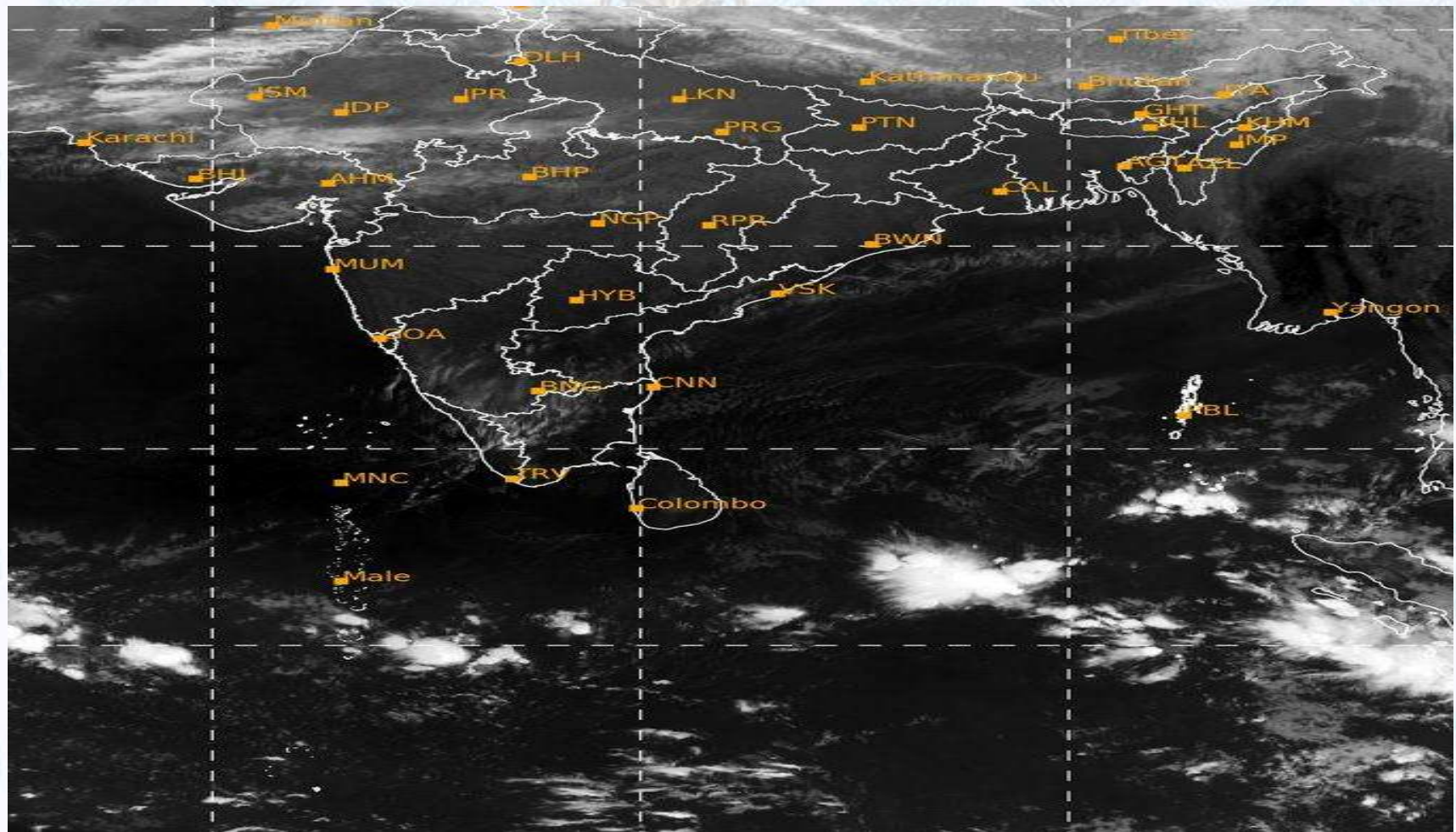
GENERAL WEATHER FORECAST – KHULNA

Description	20 Feb 2020	21 Feb 2020	22 Feb 2020
Temperature(C)	30 °C/ 17 °C	31 °C/ 17 °C	31 °C/ 18 °C
Summary	Partly Cloudy/Sunny	Partly Cloudy/Sunny	Partly Cloudy/Sunny
Sun Rise/Set	6h31m00s/18h00m30s	6h30m12s/18h01m06s	6h29m24s/18h01m36s
Day Length	11h29m30s	11h30m54s	11h32m12s
Moon Rise/Set	4:09AM 3:10PM	4:58AM 4:04PM	5:43AM 4:58PM
Moon Phase/illu	Waning Crescent, 8%	Waning Crescent, 3%	Waning Crescent, 0%
Nautical Twilight	0541, 1849	0541, 1850	0540, 1850
Civil Twilight	0608.,1823	0607.,1823	0606.,1824
Humidity	D : 63% N : 76%	D : 57% N : 73%	D : 55% N : 72%
Barometer (mb)	1016	1016	1018
Visibility	Good	Good	Good
Precip Chance	10%	10%	1%
Wind (mph)	6 km/h SSW	7 km/h NNE	13 km/h N

Ref: <https://weather.com/weather/5day//BGXX0005:1:BG>



SATELLITE VIEW OF BAY OF BENGAL



19/02/2020, 11:00 UTC MATSAT-IR

Ref: <http://satellite.imd.gov.in/insat.htm>



Fleet Forecast Sea Area C-90 (Valid for 12 Hrs Commencing 1000 UTC of 19.02.2020)

Part One	NO STORM WARNING.	
Part Two	SEASONAL LOW LIES OVER SOUTH BAY.	
Part Three	Weather	TEMPORARY PARTLY CLOUDY SKY OVER AREA C-90.
	Wind	W/NWLY, 08-12 KTS.
	Visibility	03-05 KMS, REDUCING TO 1500 M OR LESS IN MIST/HAZE.
	Outlook	FOR SUBSEQUENT 12 HOURS: LITTLE CHANGE.
	MSL Pressure	AT =19,0000 UTC. CHATTOGRAM =1013 HPA



Inland River Port Warning (VALID TILL 06 PM OF 19.02.2020)

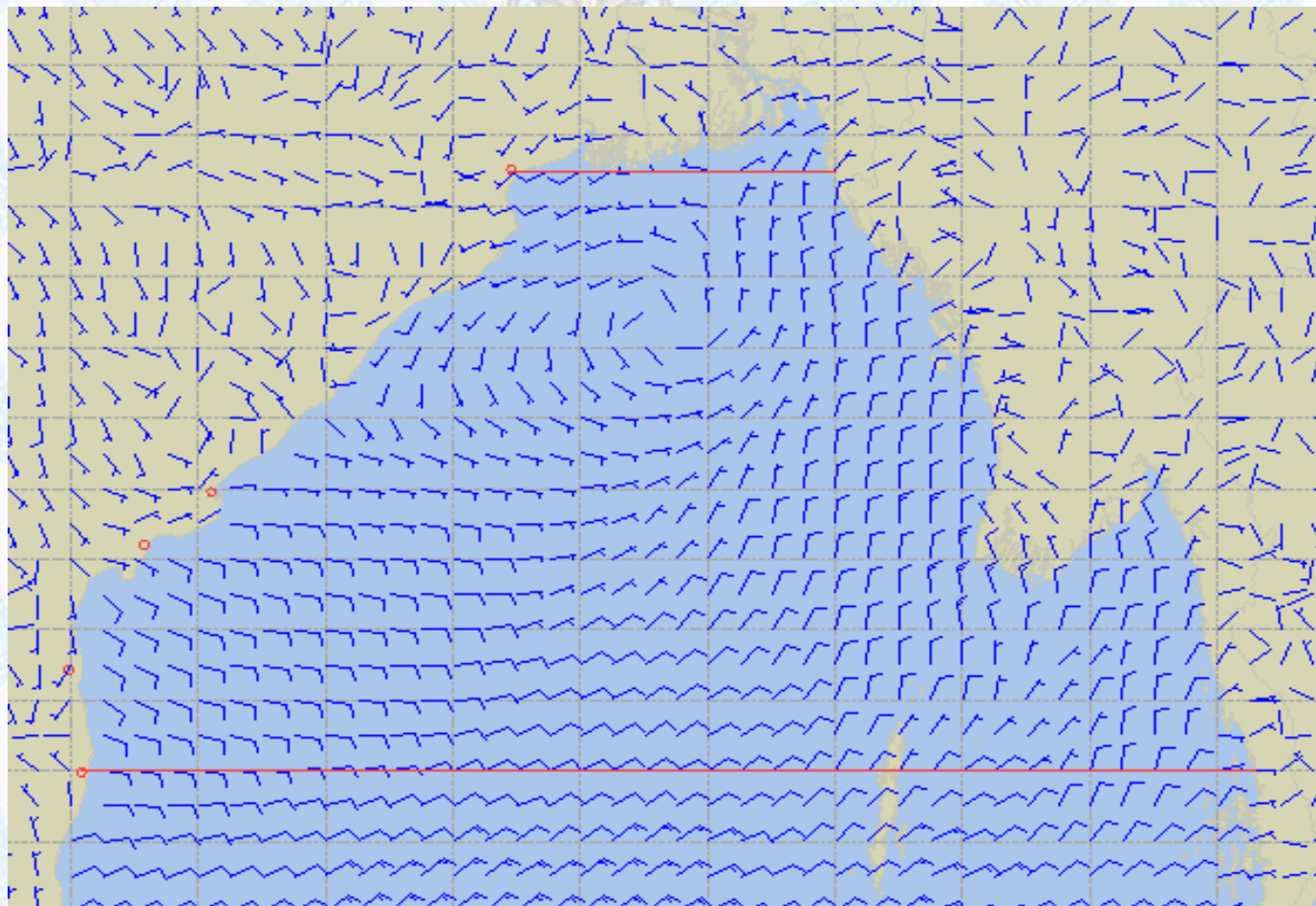
THERE IS NO INLAND RIVERPORTS WARNING & NO SIGNAL IS TO BE HOISTED.



Ref: <http://www.bmd.gov.bd/?/home>



Surface Wind Forecast- 20 Feb - 2020



Legend:



**Calm
Winds**



5 Knots



10 Knots



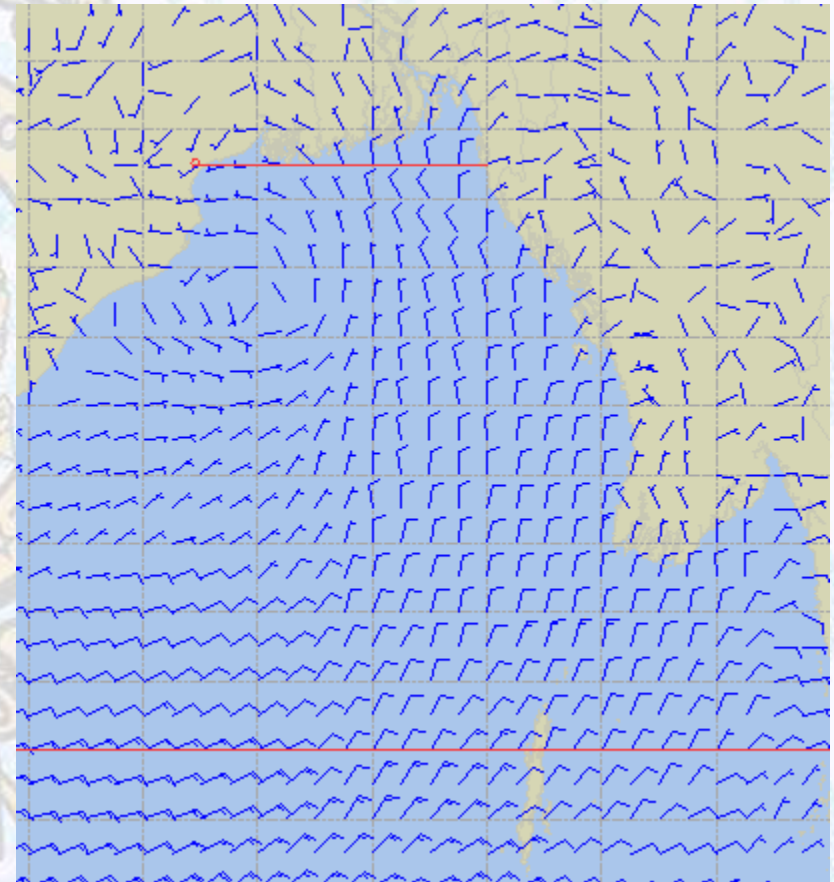
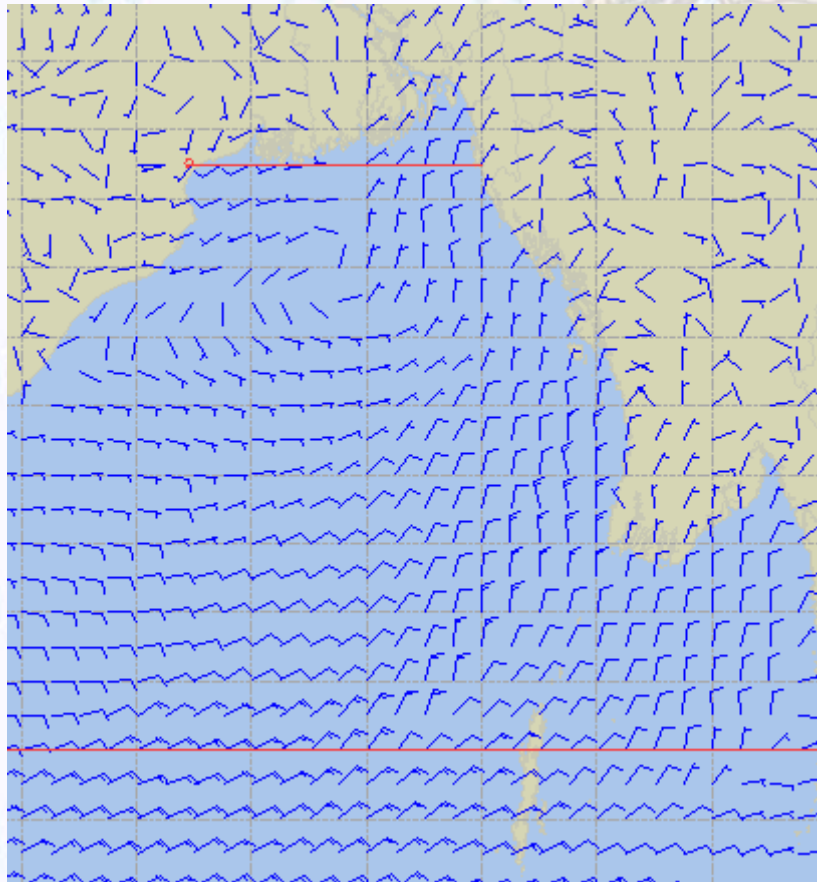
60 Knots



Surface Wind Forecast – 21 & 22 Feb - 2020

21 Feb 2020 Friday

22 Feb 2020 Saturday



Legend:



**Calm
Winds**



5 Knots



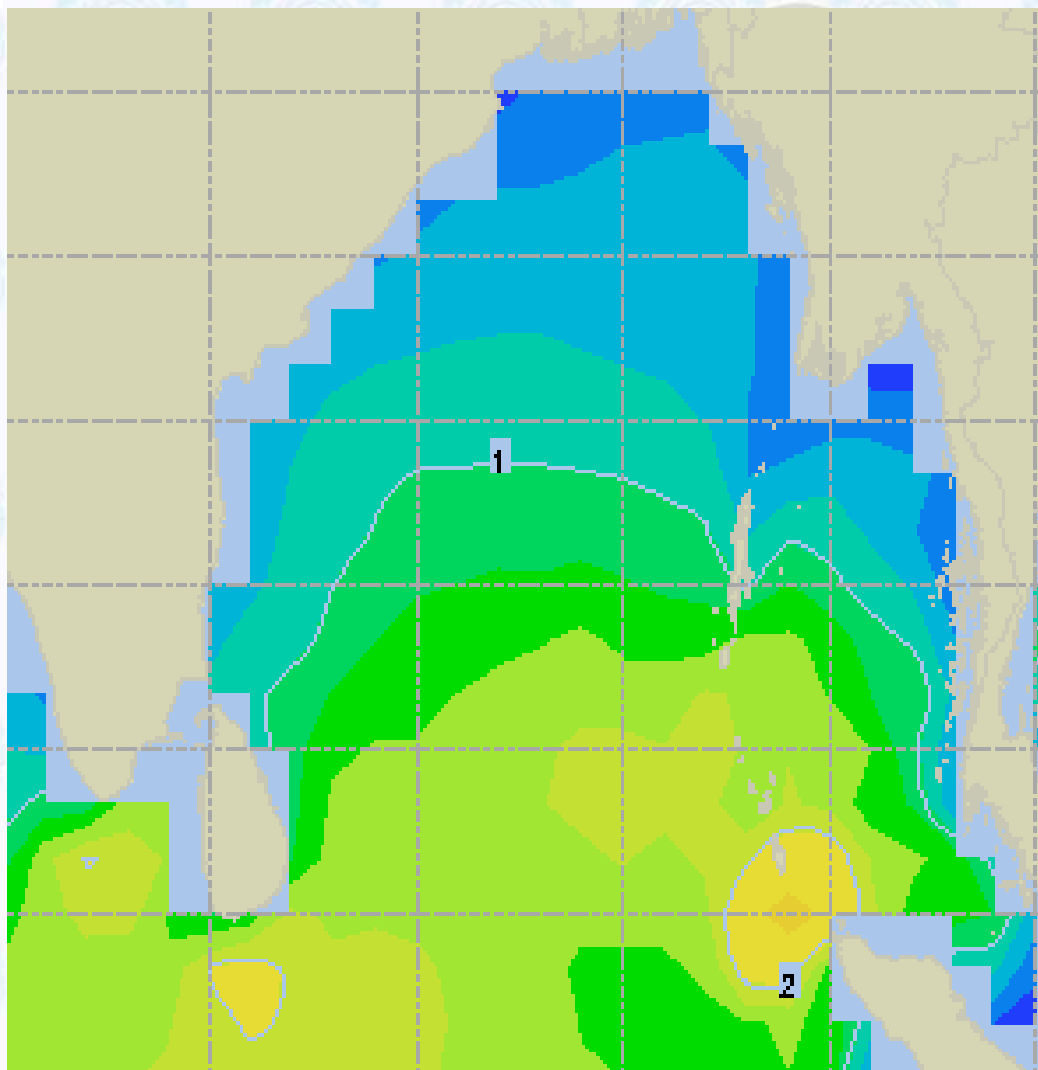
10 Knots



60 Knots



Sea State Forecast - 20 Feb - 2020



Sea State	Ht (m)
0	0-0.1
1	0-0.1
2	0.1-0.5
3	0.5-1.25
4	1.25-2.5
5	2.5-4.0
6	4-6
7	6-9
8	9-14
9	Over 14

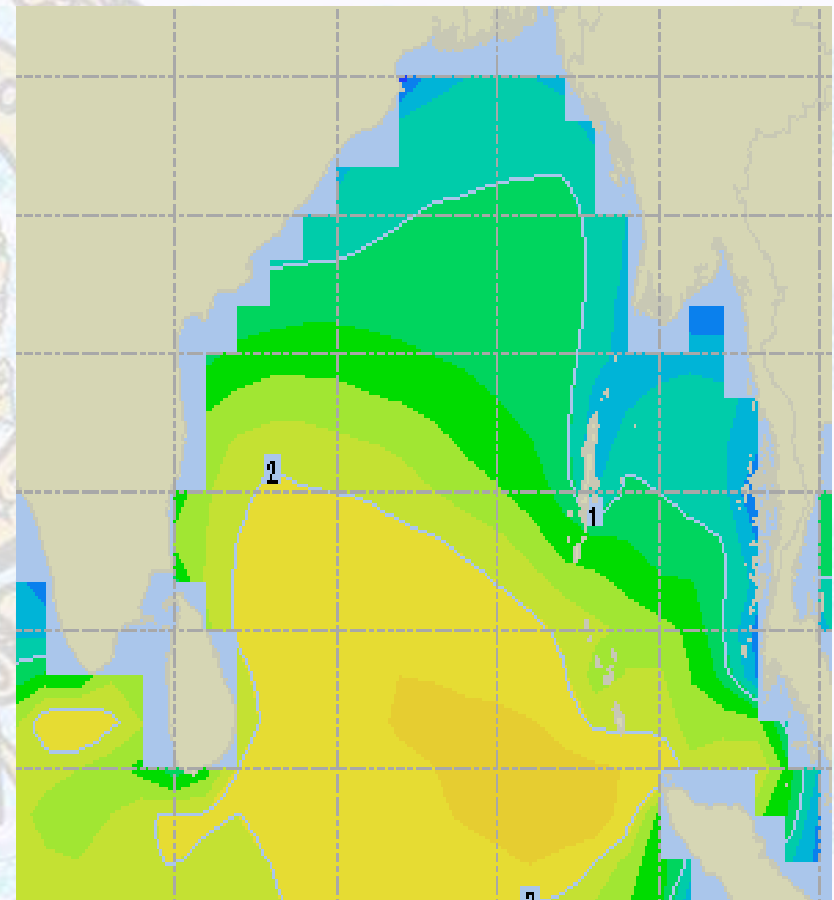
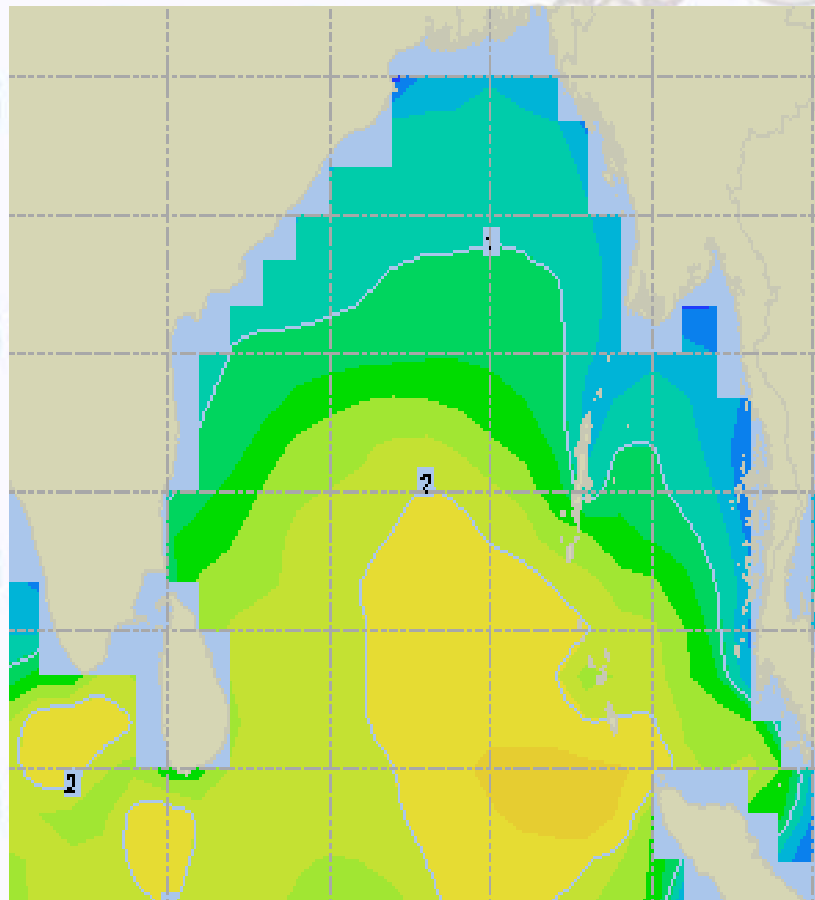




Sea State Forecast - 21 & 22 Feb - 2020

21 Feb 2020 Friday

22 Feb 2020 Saturday

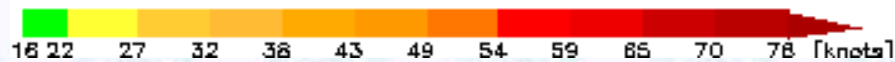
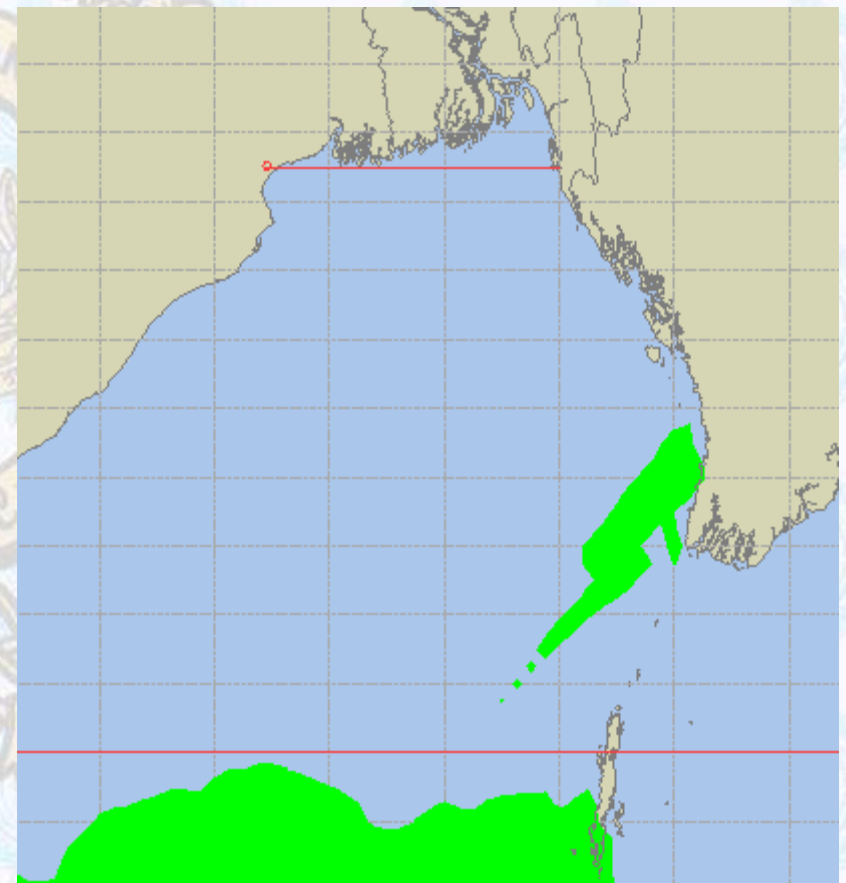
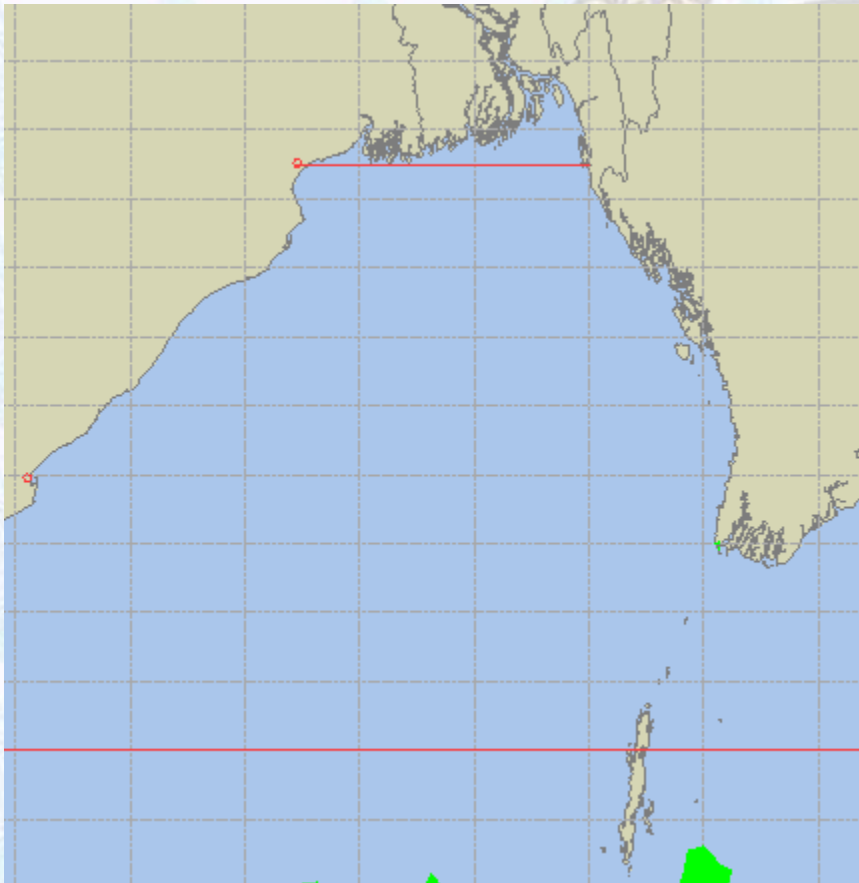




Peak Gusting Possibilities – 20 & 21 Feb - 2020

20 Feb 2020 Thursday

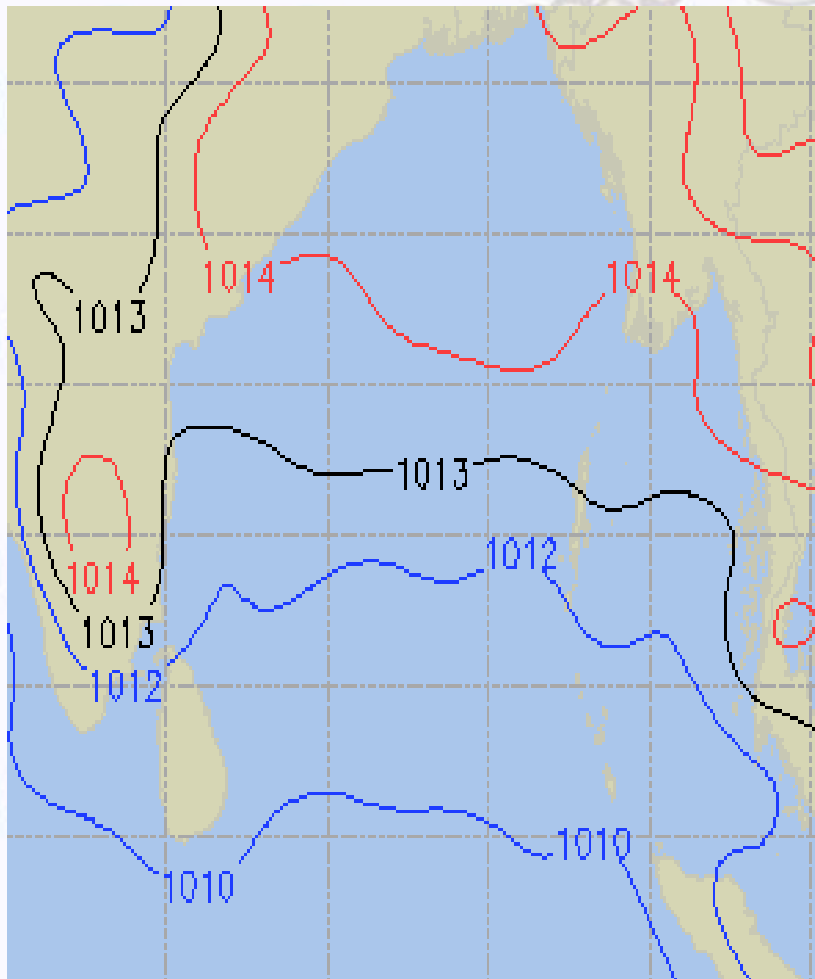
21 Feb 2020 Friday



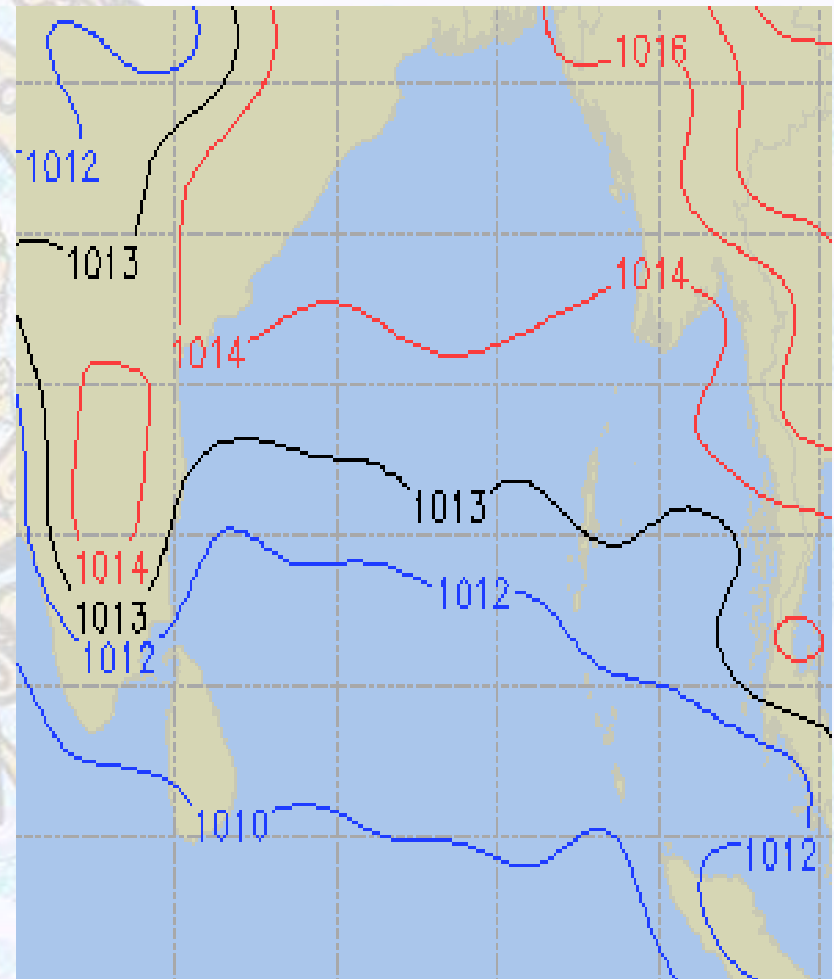


Surface Pressure forecast – 20 & 21 Feb - 2020

20 Feb 2020 Thursday



21 Feb 2020 Friday

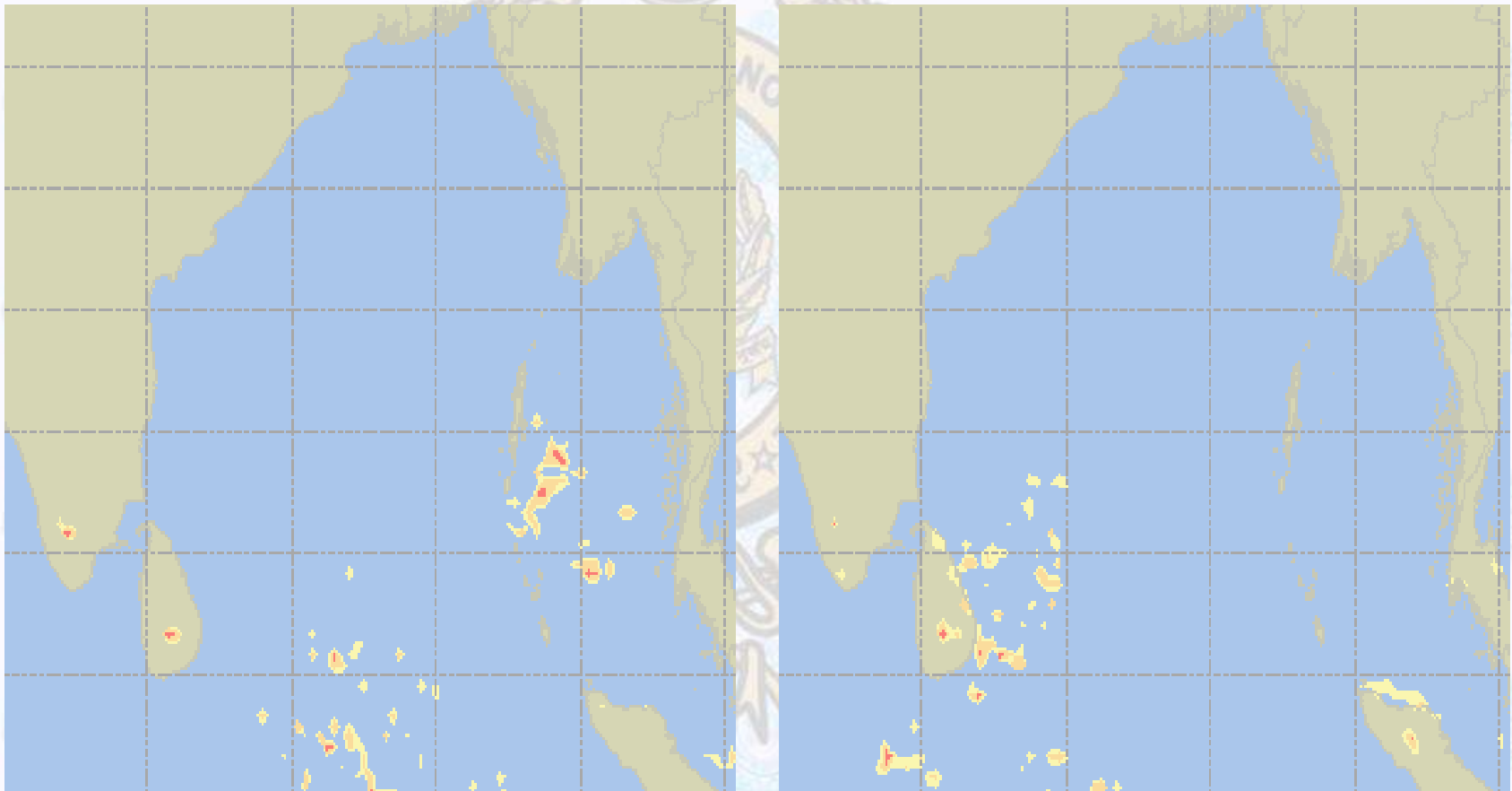




Visibility at Sea Forecast – 20 & 21 Feb - 2020

20 Feb 2020 Thursday

21 Feb 2020 Friday



Visibility Scale:



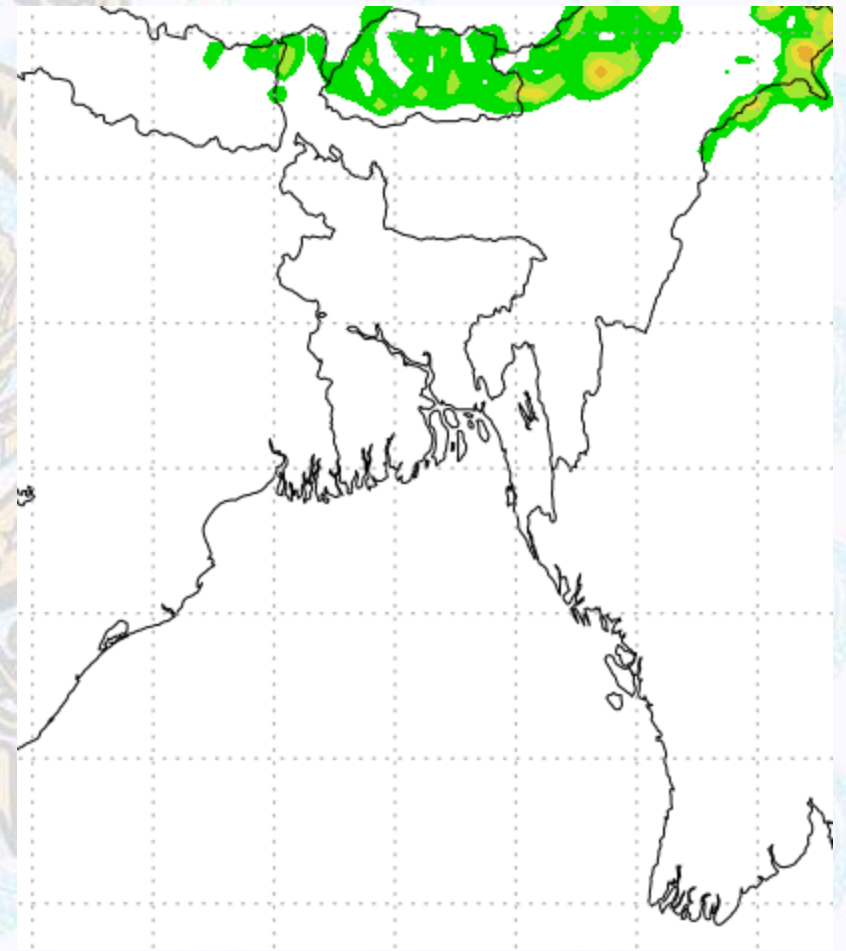
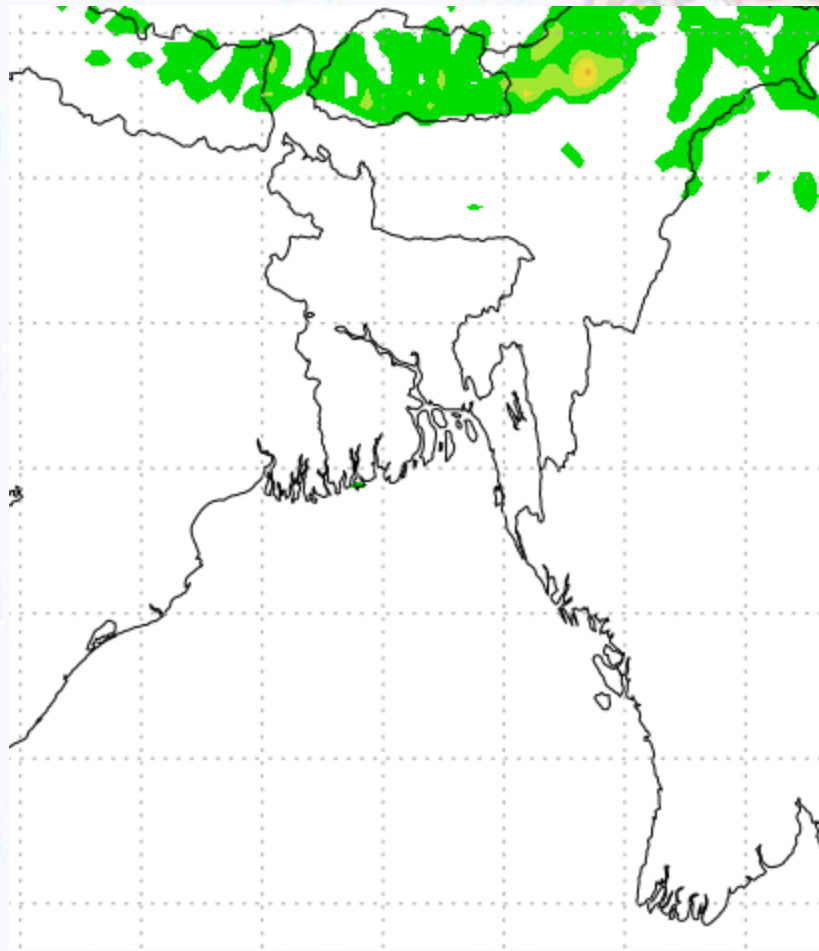
Ref (Slide 12-18): <http://www.weatheronline.co.uk/marine/weather?LEVEL>



Precipitation

Rain(mm) 20 & 21 Feb 20

Rain(mm) 21 & 22 Feb 20



Precipitation Scale (mm):





Tidal Information

KHAL NO. 10

COX'S BAZAR

HIRAN POINT

	Time	Height		Time	Height		Time	Height
20Feb 2020	0542	0.68		0252	0.71		0316	0.86
	1146	3.37		0840	2.28		0916	2.15
	1747	0.82		1508	0.61		1513	0.77
	2354	3.85		2103	2.71		2135	2.56
21Feb 2020	Time	Height		Time	Height		Time	Height
	0630	0.54		0347	0.56		0402	0.69
	1227	3.55		0930	2.48		0959	2.32
	1832	0.70		1601	0.47		1600	0.63
	-	-		2148	2.92		2214	2.67
22Feb 2020	Time	Height		Time	Height		Time	Height
	0032	3.97		0432	0.43		0439	0.56
	0708	0.47		1010	2.68		1034	2.45
	1300	3.70		1643	0.36		1637	0.53
	1909	0.61		2227	3.10		2246	2.75