



**WEATHER FORECAST FOR BN**

**12 - 15 - FEB 2020**





# WEATHER FORECAST – DHAKA

## 12.02.2020

Hourly	2 PM	4 PM	8 PM	11 PM
Temp. / Dew Point	26 / 12	25 / 10	20 / 11	18 / 11
Wind	11 km/h WNW	12 km/h WNW	9 km/h WNW	7 km/h WNW
Humidity	40%	39%	57%	66%
Chance of Precip	1%	1%	1%	2%
Cloud Cover	1%	1%	1%	1%
Conditions	Sunny	Sunny	Clear	Clear
Sunrise Sunset	6: 35 AM 5: 52 PM			

### Conditions

Pressure : 1017 hpa

Visibility : 11.27 km

Ref: <https://www.wunderground.com/weather/bd/dhaka>



# WEATHER FORECAST – CHATTOGRAM

## 12.02.2020

Hourly	2 PM	4 PM	8 PM	11 PM
Temp. / Dew Point	26 / 10	25 / 11	21 / 13	20 / 13
Wind	15 km/h WNW	15 km/h W	11 km/h NW	10 km/h NW
Humidity	43%	44%	61%	70%
Chance of Precip.	1%	1%	1%	2%
Cloud Cover	2%	0%	0%	0%
Conditions	Sunny	Sunny	Clear	Clear
Sunrise Sunset	6: 28 AM 5: 48 PM			

### Conditions

Pressure : 1016 hpa

Visibility : 4.02 Km

Ref: <https://www.wunderground.com/weather/bd/chittagong>



# WEATHER FORECAST – KHULNA

## 12.02.2020

Hourly	2 PM	4 PM	8 PM	11 PM
Temp. / Dew Point	24 / 10	24 / 9	19 / 10	16 / 11
Wind	11 km/h NW	11 km/h NW	5 km/h NW	3 km/h NNW
Humidity	39%	39%	57%	70%
Chance of Precip.	1%	1%	1%	2%
Cloud Cover	2%	2%	1%	1%
Conditions	Sunny	Sunny	Clear	Clear
Sunrise Sunset	6: 38 AM 5: 58 PM			

### Conditions

Pressure : 1017 hpa

Visibility : 14.48 Km

Ref: <https://www.wunderground.com/weather/bd/khulna>



# GENERAL WEATHER FORECAST – DHAKA

Description	13 Feb 2020	14 Feb 2020	15 Feb 2020
<b>Temperature (C)</b>	27 °C / 14 °C	28 °C / 17 °C	29 °C / 17 °C
<b>Summary</b>	Sunny	Sunny	Sunny
<b>Sun Rise/Set</b>	6h33m18s/17h52m24s	6h32m36s/17h52m54s	6h32m00s/17h53m30s
<b>Day Length</b>	11h19m06s	11h20m18s	11h21m30s
<b>Moon Rise/ Set</b>	10:15PM 9:35AM	11:17PM 10:16AM	11:44PM 10:35AM
<b>Moon Phase/ illu</b>	Waning Gibbous, 77%	Waning Gibbous, 66%	Waning Gibbous, 96%
<b>NauticalTwilight</b>	0543,1842	0542,1842	0542,1843
<b>Civil Twilight</b>	0610,1815	0609,1815	0608,1816
<b>Humidity</b>	D : 52%    N : 70%	D : 57%    N : 75%	D : 64%    N : 80%
<b>Barometer (mb)</b>	1015	1015	1015
<b>Visibility</b>	Good	Good	Good
<b>Precip Chance</b>	0%	10%	10%
<b>Wind (mph)</b>	11 Km/h WNW	9 Km/h SW	10 Km/h WNW

Ref: <https://weather.com/weather/5day//BGXX0003:1:BG>



# GENERAL WEATHER FORECAST– CHATTOGRAM

Description	13 Feb 2020	14 Feb 2020	15 Feb 2020
<b>Temperature (C)</b>	26 °C/ 14 °C	26 °C/ 16 °C	27 °C/ 17 °C
<b>Summary</b>	Sunny	Sunny	Sunny
<b>Sun Rise/Set</b>	6h25m48s/17h48m30s	6h25m12s/17h49m00s	6h24m42s/17h49m30s
<b>Day Length</b>	11h22m42s	11h23m48s	11h24m48s
<b>Moon Rise/ Set</b>	10:08PM 9:29AM	11:09PM 10:11AM	11:44PM 10:35AM
<b>Moon Phase/ illu</b>	Waning Gibbous, 77%	Waning Gibbous, 66%	Waning Gibbous, 96%
<b>NauticalTwilight</b>	0536, 1837	0536, 1838	0535, 1838
<b>Civil Twilight</b>	0603.,1811	0602,1811	0601,1812
<b>Humidity</b>	D : 56% N : 83%	D : 62% N : 81%	D : 69% N : 83%
<b>Barometer (mb)</b>	1014	1014	1014
<b>Visibility</b>	Good	Good	Good
<b>Precip Chance</b>	0%	0%	10%
<b>Wind (mph)</b>	14 km/h WNW	12 km/h SSW	14 km/h SSW

Ref: <https://weather.com/weather/5day//BGXX0002:1:BG>



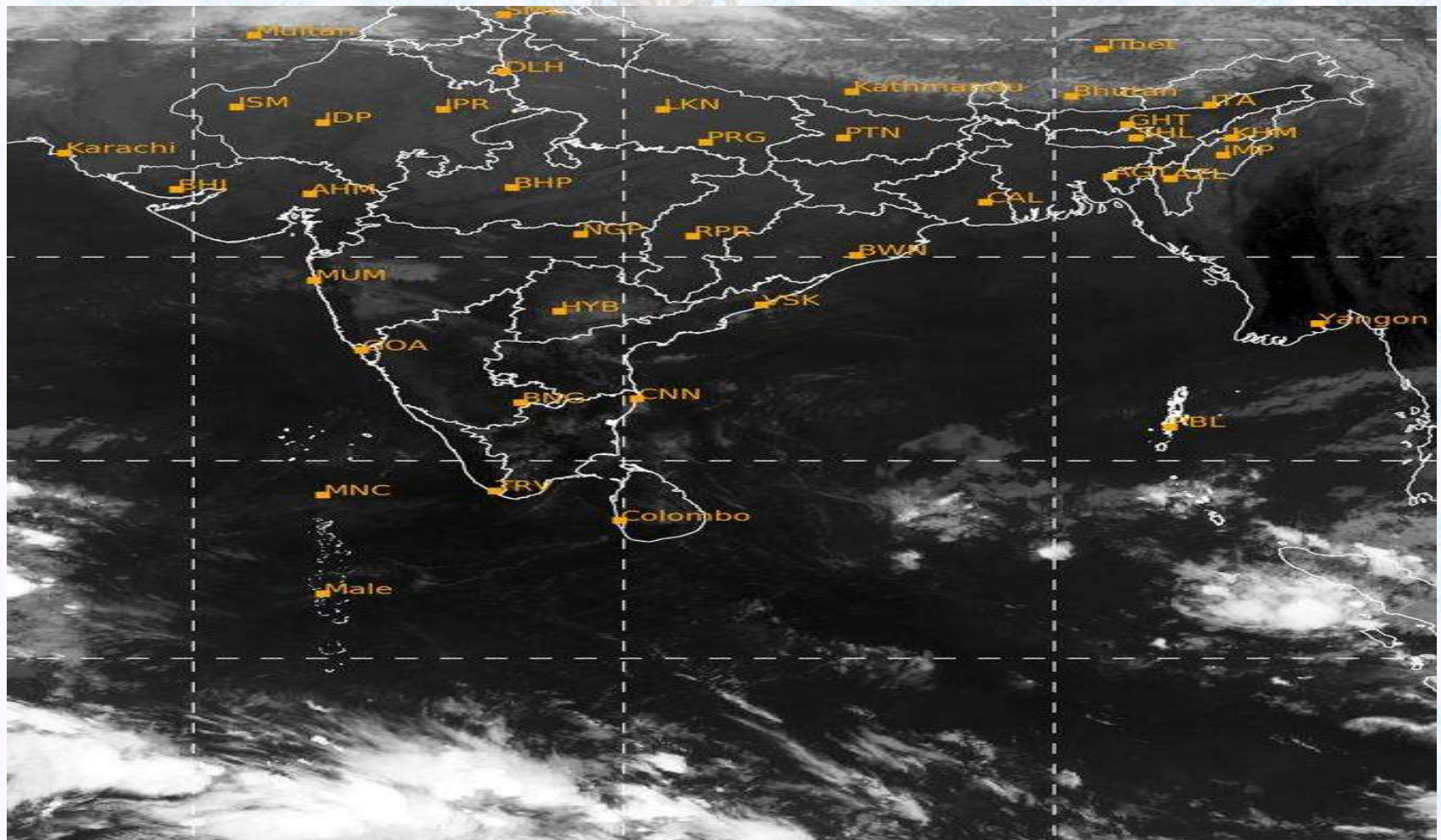
# GENERAL WEATHER FORECAST – KHULNA

Description	13 Feb 2020	14 Feb 2020	15 Feb 2020
<b>Temperature(C)</b>	27 °C/ 14 °C	29 °C/ 16 °C	30 °C/ 15 °C
<b>Summary</b>	Sunny	Sunny	Sunny
<b>Sun Rise/Set</b>	6h35m36s/17h57m00s	6h34m54s/17h57m30s	6h34m24s/17h58m00s
<b>Day Length</b>	11h21m24s	11h22m36s	11h23m36s
<b>Moon Rise/Set</b>	10:19PM 9:40AM	11:20PM 10:21AM	11:44PM 10:35AM
<b>Moon Phase/illu</b>	Waning Gibbous, 77%	Waning Gibbous, 66%	Waning Gibbous, 96%
<b>Nautical Twilight</b>	0546, 1846	0545, 1846	0544, 1847
<b>Civil Twilight</b>	0612.,1819	0612.,1820	0611.,1820
<b>Humidity</b>	D : 51% N : 72%	D : 59% N : 79%	D : 56% N : 72%
<b>Barometer (mb)</b>	1016	1016	1016
<b>Visibility</b>	Good	Good	Good
<b>Precip Chance</b>	0%	10%	10%
<b>Wind (mph)</b>	11 km/h WNW	12 km/h WSW	10 km/h WNW

Ref: <https://weather.com/weather/5day//BGXX0005:1:BG>



# SATELLITE VIEW OF BAY OF BENGAL



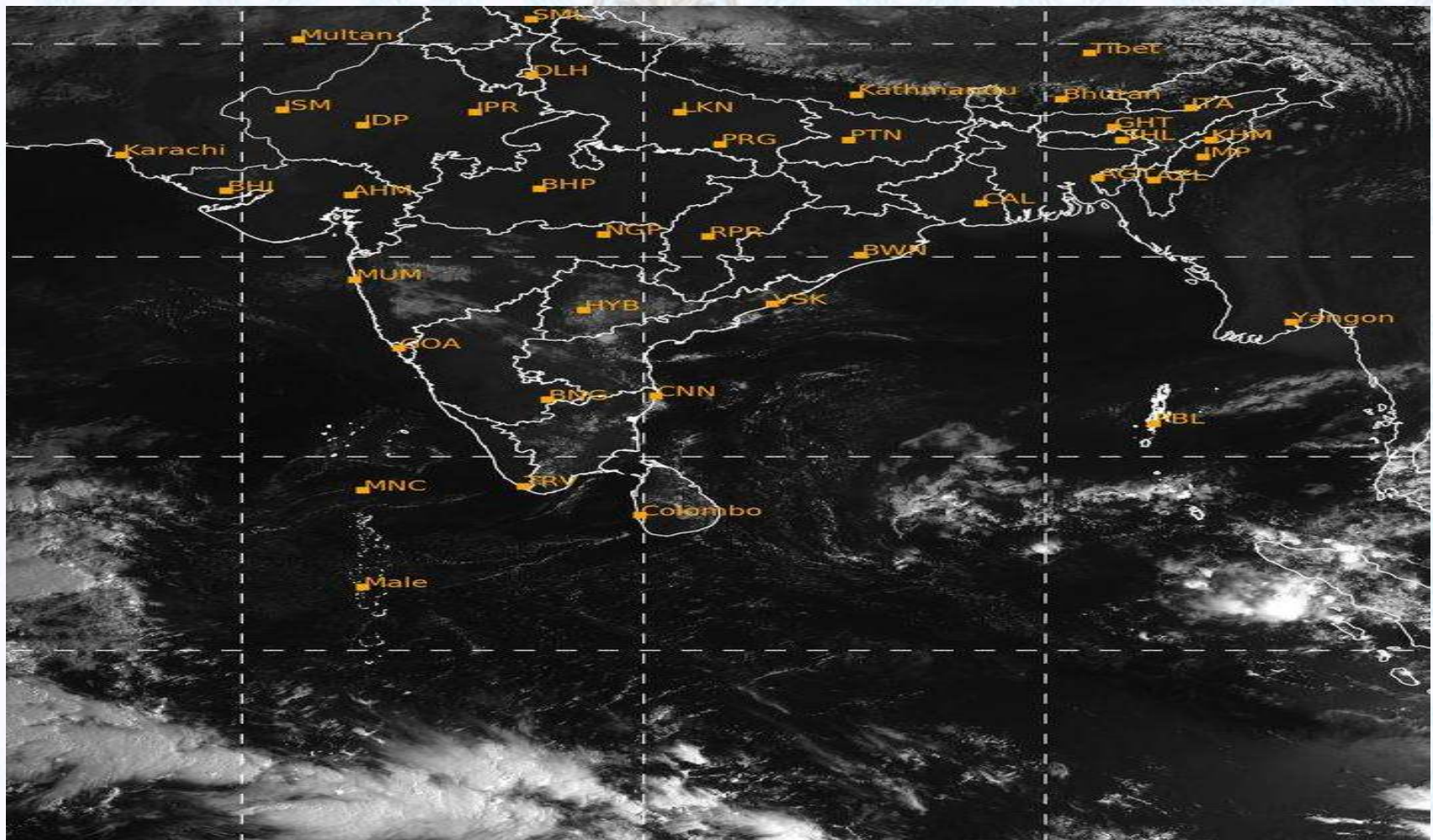
12/02/2020, 09:00 UTC MATSAT-IR

Ref: <http://satellite.imd.gov.in/insat.htm>





# SATELLITE VIEW OF BAY OF BENGAL



12/02/2020, 09:00 MATSAT-VIS

Ref: <http://satellite.imd.gov.in/insat.htm>



# Fleet Forecast Sea Area C-90 ( Valid for 12 Hrs Commencing 1000 UTC of 12.02.2020)

<b>Part One</b>	NO STORM WARNING.	
<b>Part Two</b>	SEASONAL LOW LIES OVER SOUTH BAY.	
<b>Part Three</b>	Weather	TEMPORARY PARTLY CLOUDY OVER AREA C-90.
	Wind	NORTH/NORTH-EASTERLY, 08-12 KTS.
	Visibility	02-04 KMS, REDUCING TO 1000 M OR LESS IN FOG/ MIST.
	Outlook	FOR SUBSEQUENT 12 HOURS: LITTLE CHANGE.
	MSL Pressure	AT =12,0000 UTC. CHATTOGRAM =1015 HPA



# Inland River Port Warning (VALID TILL 06 PM OF 12.02.2020)

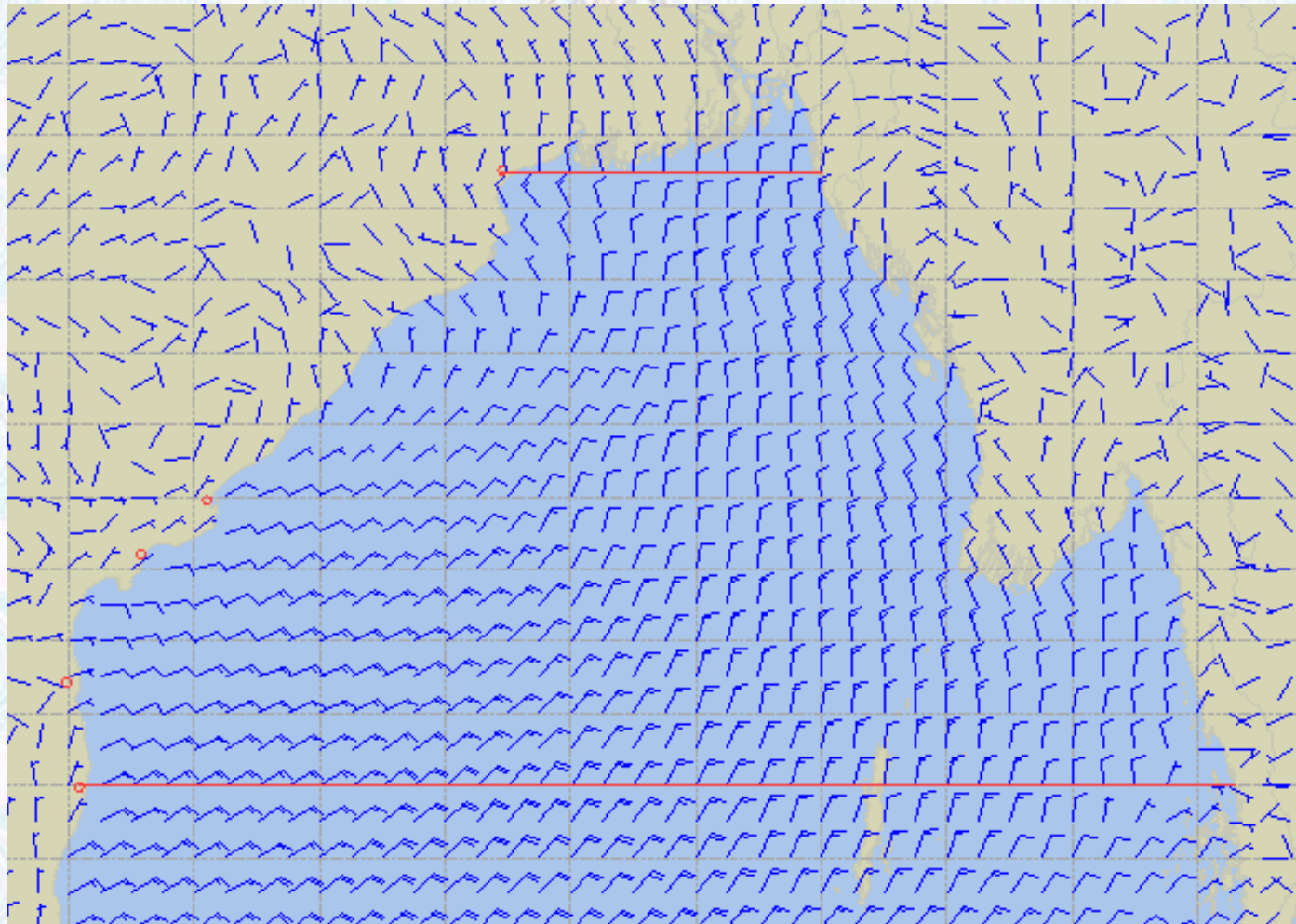
THERE IS NO INLAND RIVERPORTS WARNING & NO SIGNAL IS TO BE HOISTED.



Ref: <http://www.bmd.gov.bd/?/home>



# Surface Wind Forecast- 13 Feb - 2020



**Legend:**



**Calm  
Winds**



**5 Knots**



**10 Knots**



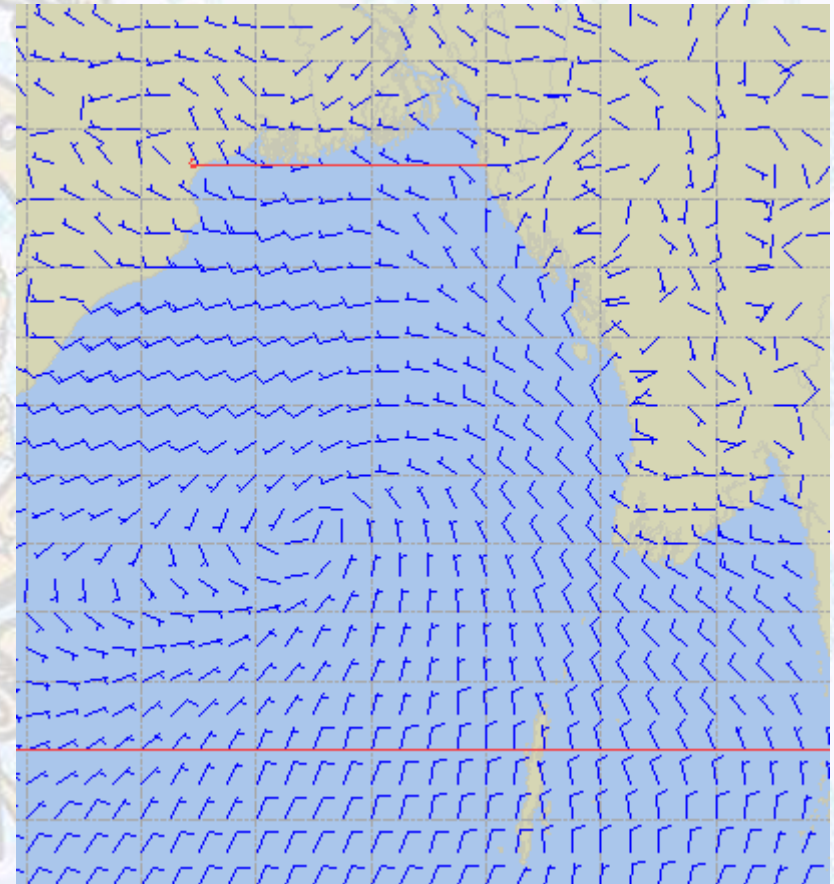
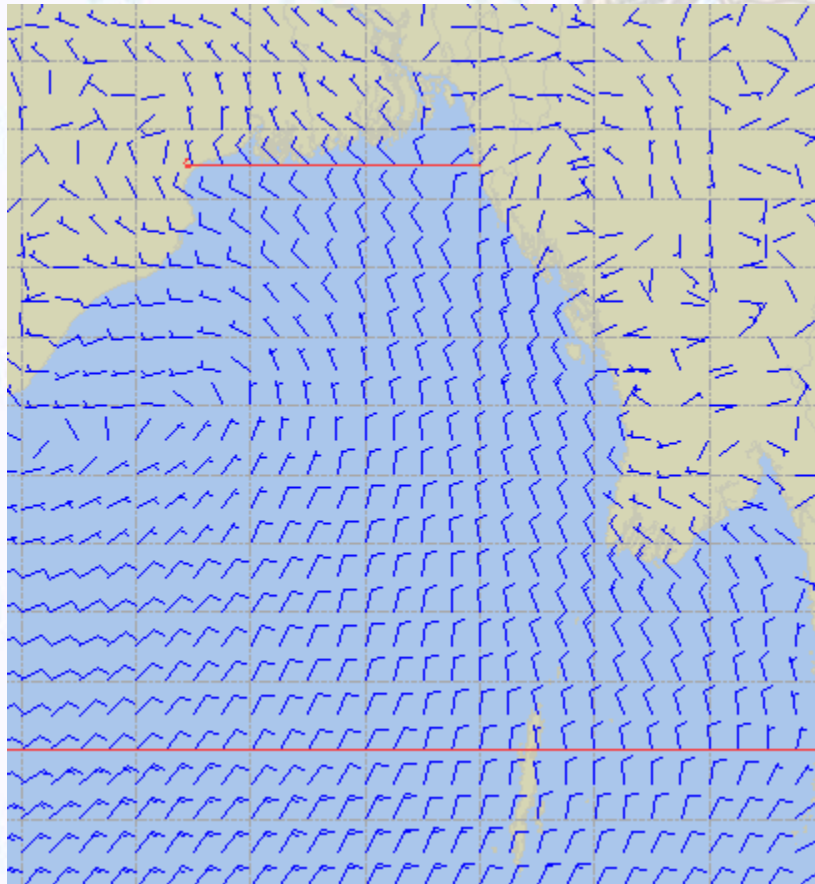
**60 Knots**



# Surface Wind Forecast – 14 & 15 Feb - 2020

14 Feb 2020 Friday

15 Feb 2020 Saturday



**Legend:**



**Calm  
Winds**



**5 Knots**



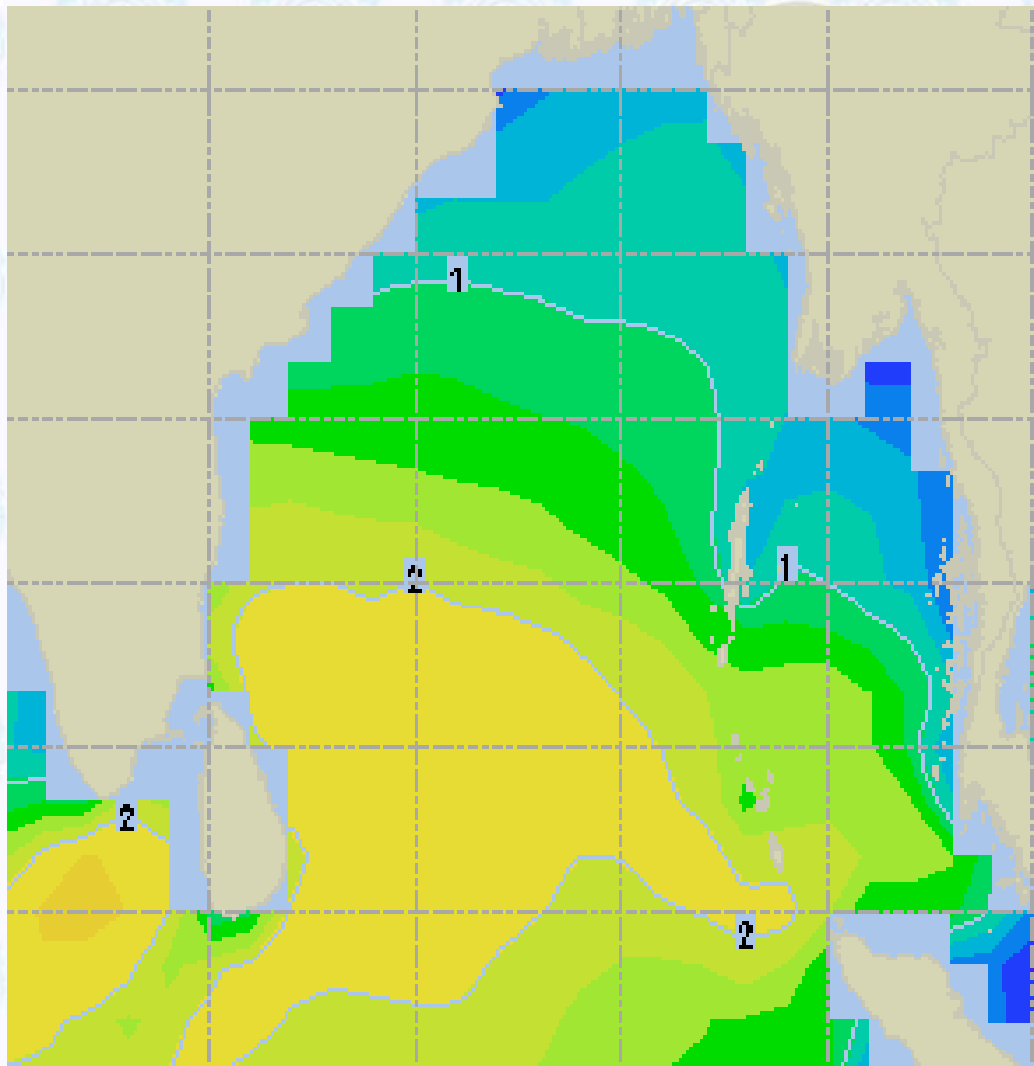
**10 Knots**



**60 Knots**



# Sea State Forecast - 13 Feb - 2020



Sea State	Ht (m)
0	0-0.1
1	0-0.1
2	0.1-0.5
3	0.5-1.25
4	1.25-2.5
5	2.5-4.0
6	4-6
7	6-9
8	9-14
9	Over 14

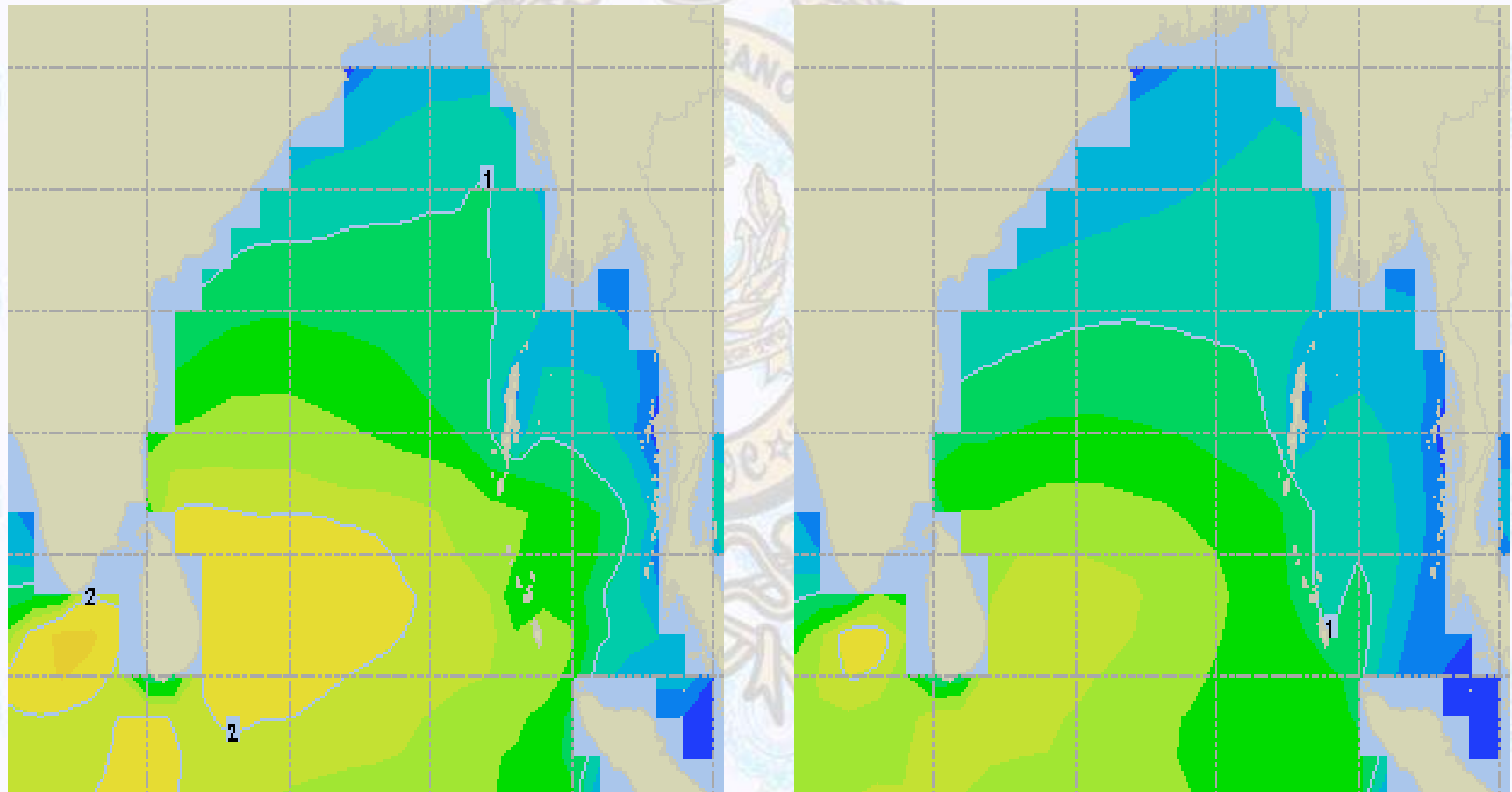




# Sea State Forecast - 14 & 15 Feb - 2020

14 Feb 2020 Friday

15 Feb 2020 Saturday

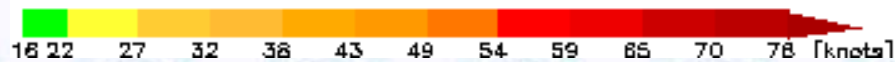
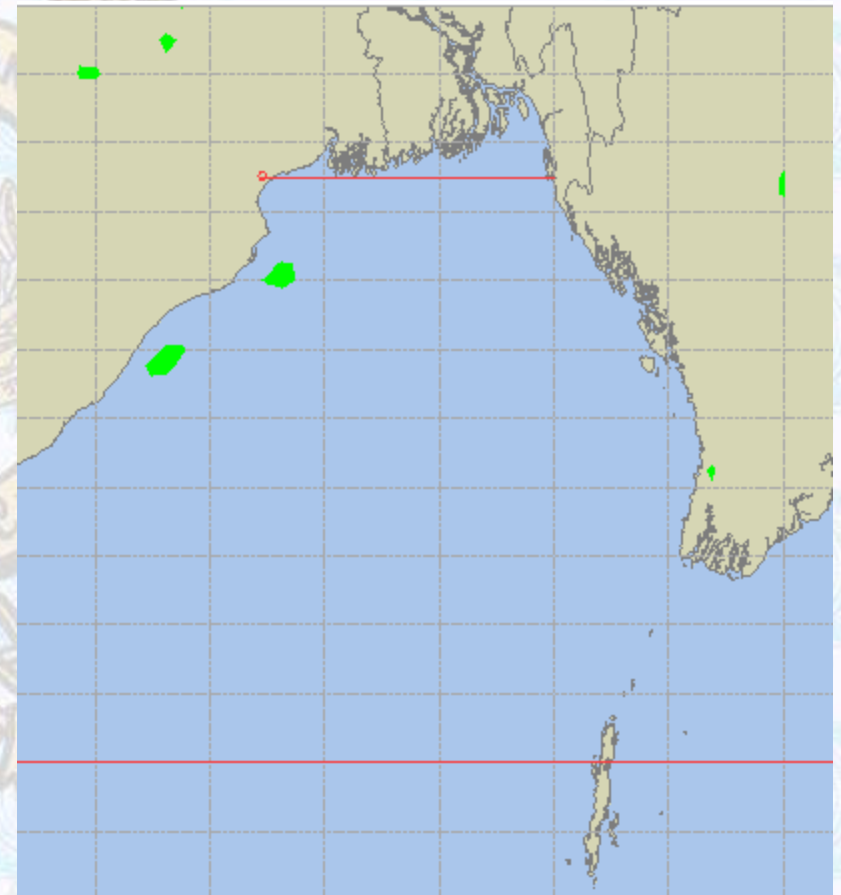
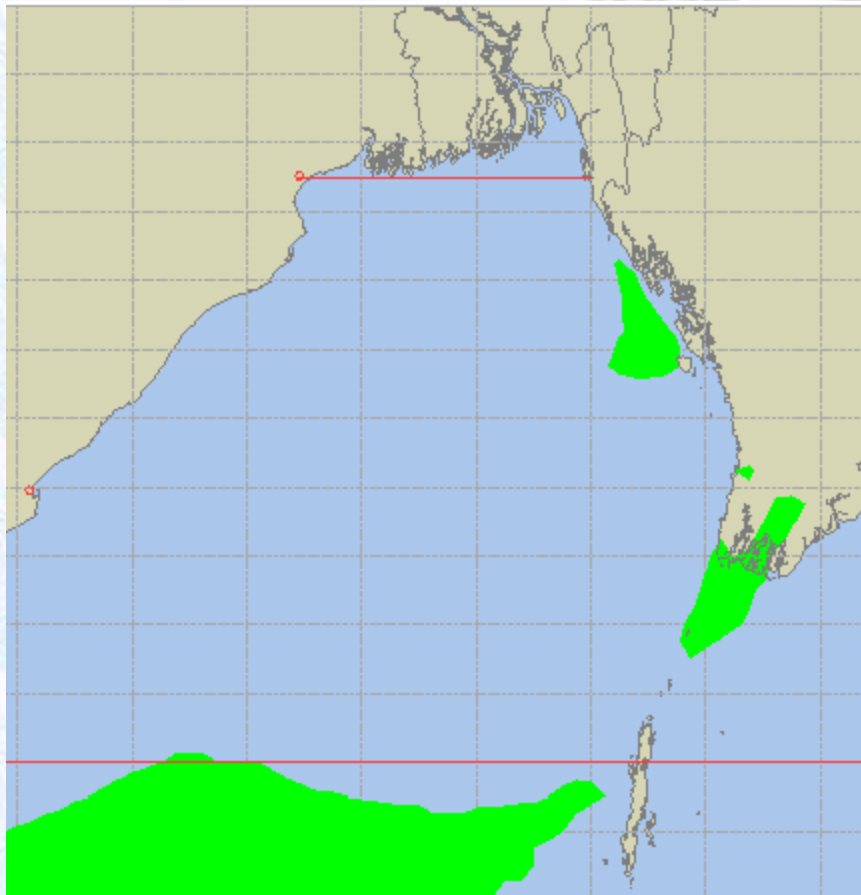




# Peak Gusting Possibilities – 13 & 14 Feb - 2020

13 Feb 2020 Thursday

14 Feb 2020 Friday

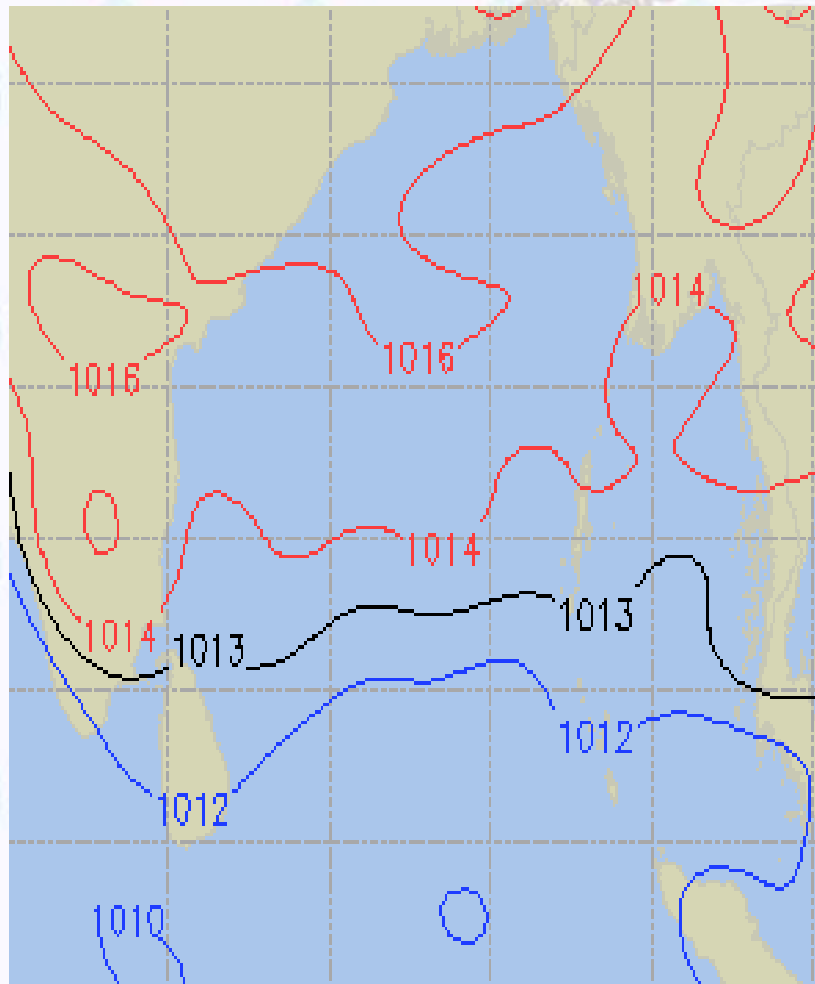




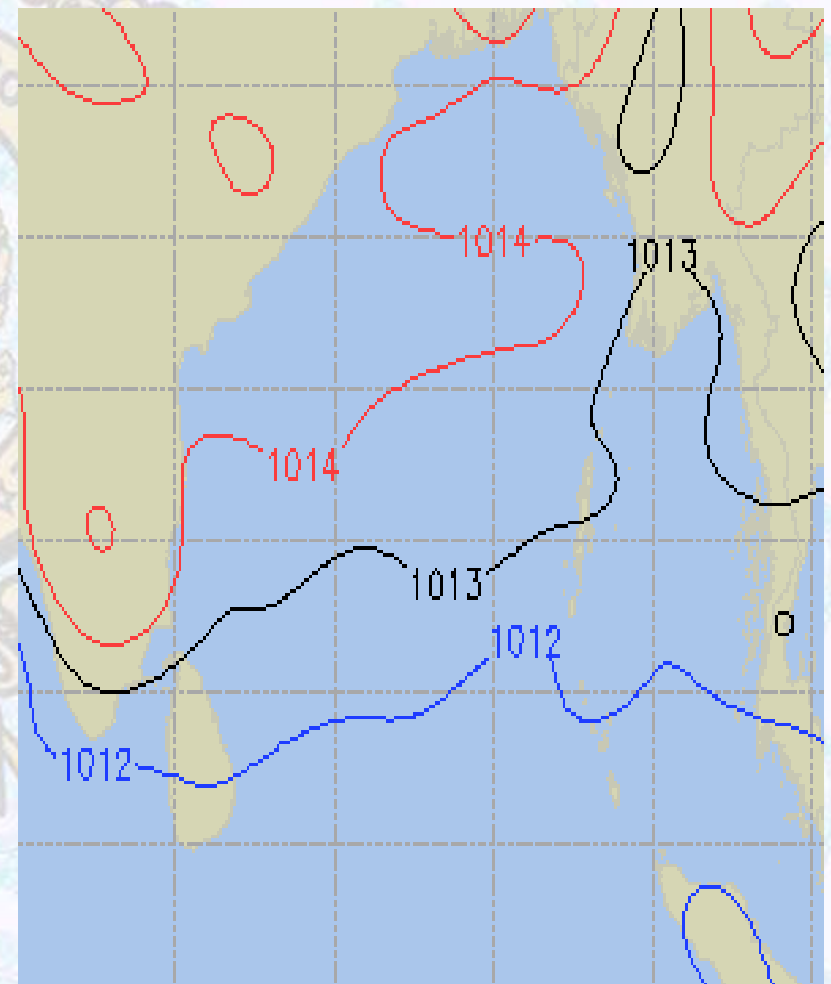


# Surface Pressure forecast – 13 & 14 Feb - 2020

13 Feb 2020 Thursday



14 Feb 2020 Friday

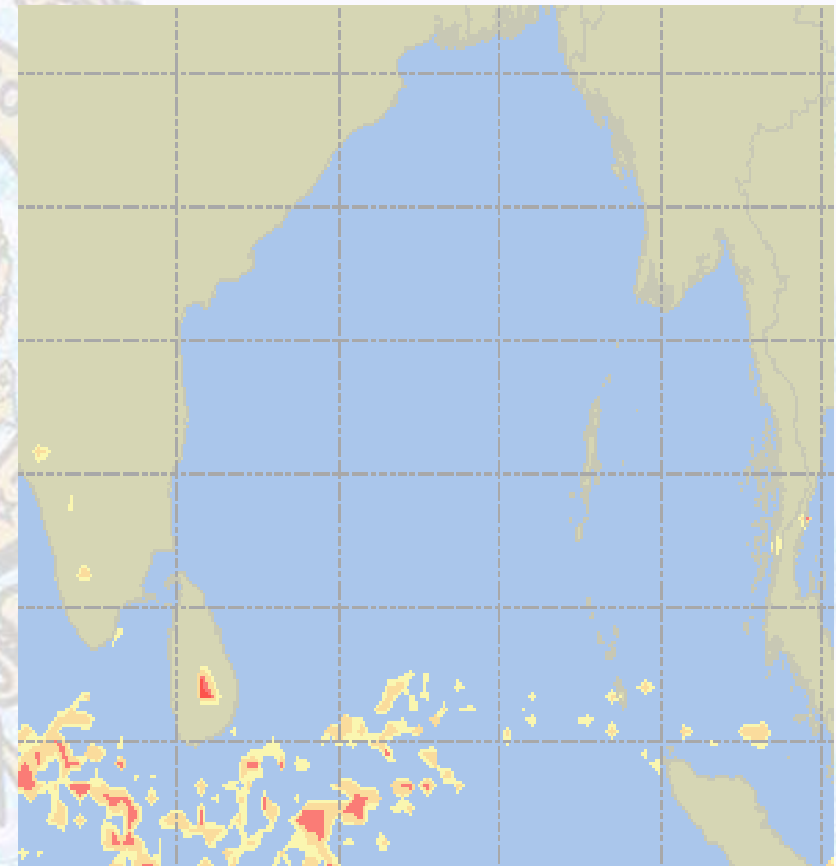
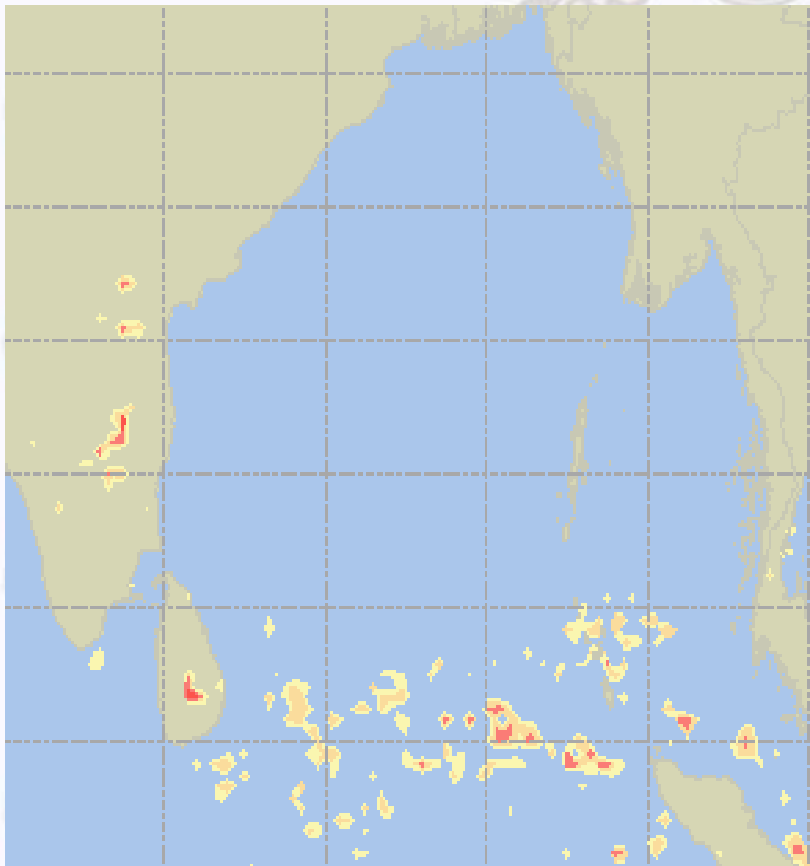




# Visibility at Sea Forecast – 13 & 14 Feb - 2020

13 Feb 2020 Thursday

14 Feb 2020 Friday



**Visibility Scale:**



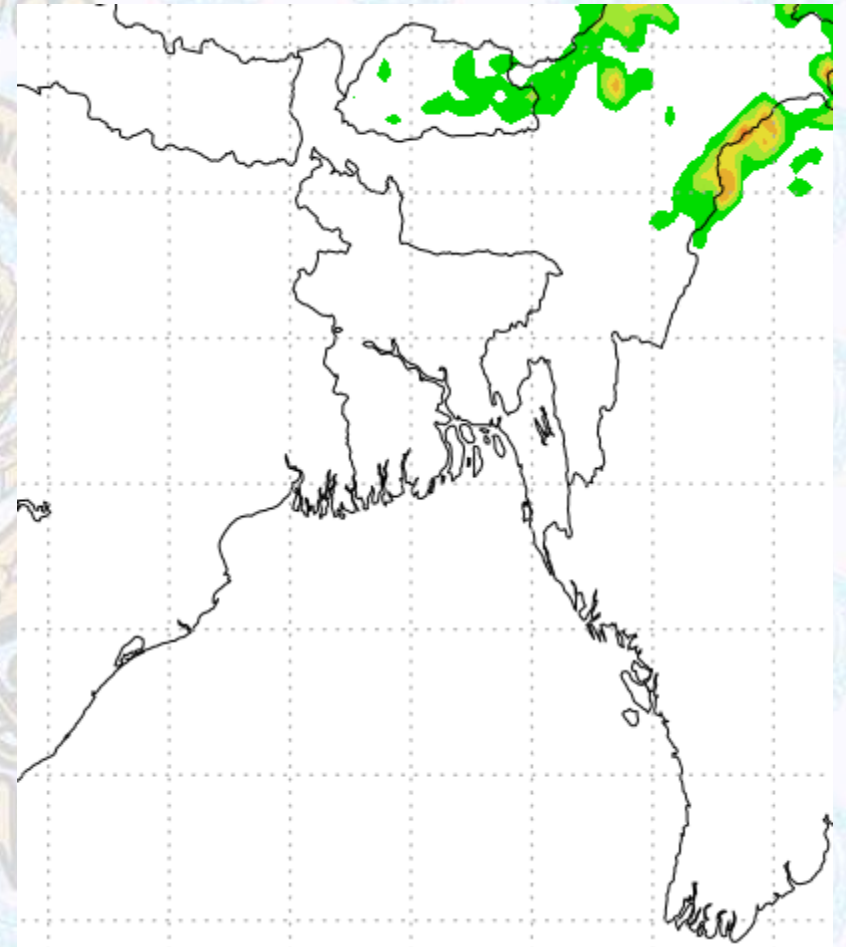
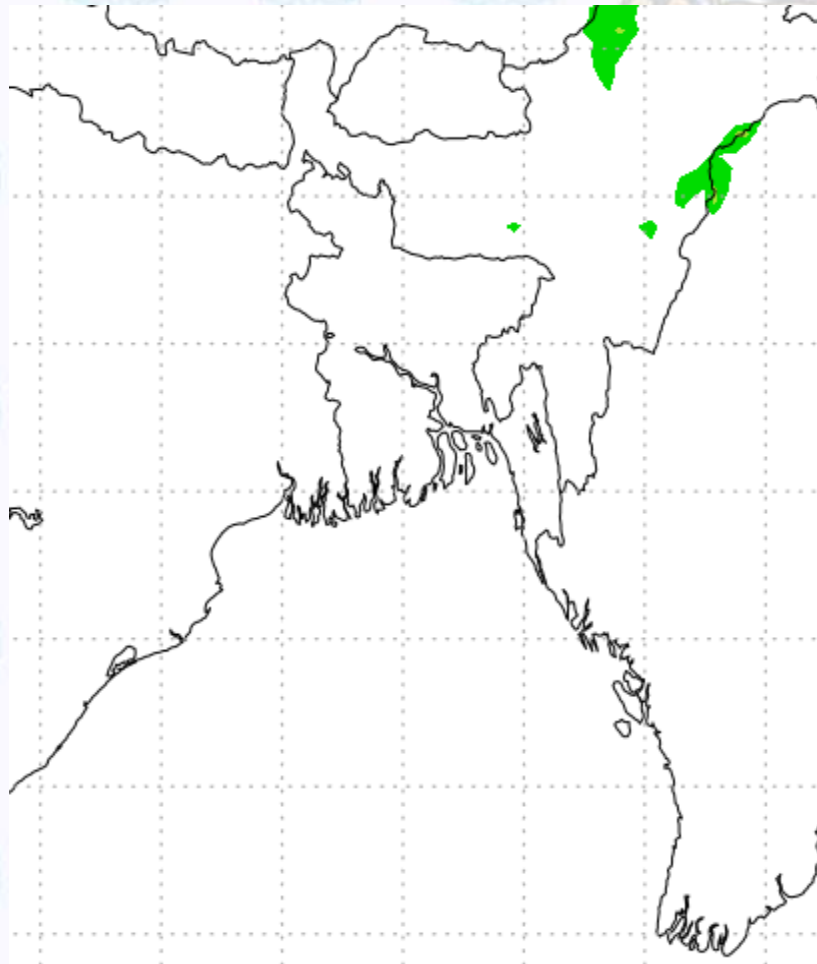
Ref (Slide 12-18): <http://www.weatheronline.co.uk/marine/weather?LEVEL>



# Precipitation

Rain(mm) 13 & 14 Feb 20

Rain(mm) 14 & 15 Feb 20



Precipitation Scale (mm):





# Tidal Information

## KHAL NO. 10

## COX'S BAZAR

## HIRAN POINT

	Time	Height		Time	Height		Time	Height
<b>13Feb 2020</b>	0322	4.39		0108	3.45		0111	2.89
	1012	0.17		0748	0.11		0738	0.18
	1558	4.16		1329	3.12		1341	2.74
	2229	0.44		2005	0.20		1952	0.43
<b>14Feb 2020</b>	<b>Time</b>	<b>Height</b>		<b>Time</b>	<b>Height</b>		<b>Time</b>	<b>Height</b>
	0413	4.15		0152	3.22		0151	2.71
	1056	0.28		0830	0.23		0817	0.33
	1652	4.03		1416	2.93		1426	2.61
	2321	0.61		2050	0.36		2037	0.63
<b>15Feb 2020</b>	<b>Time</b>	<b>Height</b>		<b>Time</b>	<b>Height</b>		<b>Time</b>	<b>Height</b>
	0511	3.81		0239	2.91		0234	2.49
	1147	0.50		0914	0.39		0900	0.53
	1755	3.82		1508	2.71		1517	2.45
	-	-		2140	0.54		2331	0.87