



WEATHER FORECAST FOR BN

10 - 13 FEB 2020





WEATHER FORECAST – DHAKA

10.02.2020

Hourly	2 PM	4 PM	8 PM	11 PM
Temp. / Dew Point	25 / 11	25 / 10	19 / 11	18 / 11
Wind	13 km/h NW	13 km/h WNW	7 km/h WNW	7 km/h WNW
Humidity	40%	39%	57%	66%
Chance of Precip	1%	1%	1%	2%
Cloud Cover	1%	1%	1%	1%
Conditions	Sunny	Sunny	Clear	Clear
Sunrise Sunset	6: 36 AM 5: 51 PM			

Conditions

Pressure : 1017 hpa

Visibility : 11.27 km

Ref: <https://www.wunderground.com/weather/bd/dhaka>



WEATHER FORECAST – CHATTOGRAM

10.02.2020

Hourly	2 PM	4 PM	8 PM	11 PM
Temp. / Dew Point	25 / 12	25 / 12	22 / 13	19 / 13
Wind	18 km/h WNW	17 km/h WNW	9 km/h WNW	9 km/h NNW
Humidity	43%	44%	61%	70%
Chance of Precip.	1%	1%	1%	2%
Cloud Cover	25%	18%	1%	1%
Conditions	Sunny	Sunny	Cloudy	Cloudy
Sunrise Sunset	6: 29 AM 5: 47 PM			

Conditions

Pressure : 1016 hpa

Visibility : 4.02 Km

Ref: <https://www.wunderground.com/weather/bd/chittagong>



WEATHER FORECAST – KHULNA

10.02.2020

Hourly	2 PM	4 PM	8 PM	11 PM
Temp. / Dew Point	24 / 10	24 / 9	19 / 10	16 / 11
Wind	11 km/h NW	11 km/h NW	5 km/h NW	3 km/h NNW
Humidity	39%	39%	57%	70%
Chance of Precip.	1%	1%	1%	2%
Cloud Cover	2%	2%	1%	1%
Conditions	Sunny	Sunny	Clear	Clear
Sunrise Sunset	6: 39 AM 5: 57 PM			

Conditions

Pressure : 1017 hpa

Visibility : 14.48 Km

Ref: <https://www.wunderground.com/weather/bd/khulna>



GENERAL WEATHER FORECAST – DHAKA

Description	11 Feb 2020	12 Feb 2020	13 Feb 2020
Temperature (C)	27°C/ 14°C	27°C/ 14°C	26°C/ 15°C
Summary	Sunny	Sunny	Sunny
Sun Rise/Set	6h34m42s/17h51m12s	6h34m00s/17h51m48s	6h33m18s/17h52m24s
Day Length	11h16m30s	11h17m48s	11h19m06s
Moon Rise/ Set	8:08PM 8:11AM	9:13PM 8:54AM	10:15PM 9:35AM
Moon Phase/ illu	Waning Gibbous, 94%	Waning Gibbous, 86%	Waning Gibbous, 77%
NauticalTwilight	0544,1841	0544,1841	0543,1842
Civil Twilight	0611,1814	0610,1814	0610,1815
Humidity	D : 53% N : 66%	D : 51% N : 67%	D : 55% N : 72%
Barometer (mb)	1016	1017	1015
Visibility	Good	Good	Good
Precip Chance	1%	1%	1%
Wind (mph)	12 Km/h NW	12 Km/h WNW	11 Km/h WNW

Ref: <https://weather.com/weather/5day//BGXX0003:1:BG>



GENERAL WEATHER FORECAST– CHATTOGRAM

Description	11 Feb 2020	12 Feb 2020	13 Feb 2020
Temperature (C)	26°C/ 14°C	26°C/ 14°C	26°C/ 15°C
Summary	Sunny	Sunny	Sunny
Sun Rise/Set	6h27m06s/17h47m18s	6h26m30s/17h47m54s	6h25m48s/17h48m30s
Day Length	11h20m12s	11h21m24s	11h22m42s
Moon Rise/ Set	8:03PM 8:04AM	9:07PM 8:47AM	10:08PM 9:29AM
Moon Phase/ illu	Waning Gibbous, 94%	Waning Gibbous, 86%	Waning Gibbous, 77%
Nautical Twilight	0537, 1836	0537, 1837	0536, 1837
Civil Twilight	0604.,1810	0603.,1810	0603.,1811
Humidity	D : 56% N : 69%	D : 54% N : 72%	D : 56% N : 83%
Barometer (mb)	1017	1017	1016
Visibility	Good	Good	Good
Precip Chance	1%	1%	1%
Wind (mph)	14 km/h NW	14 km/h NW	13 km/h WNW

Ref: <https://weather.com/weather/5day//BGXX0002:1:BG>



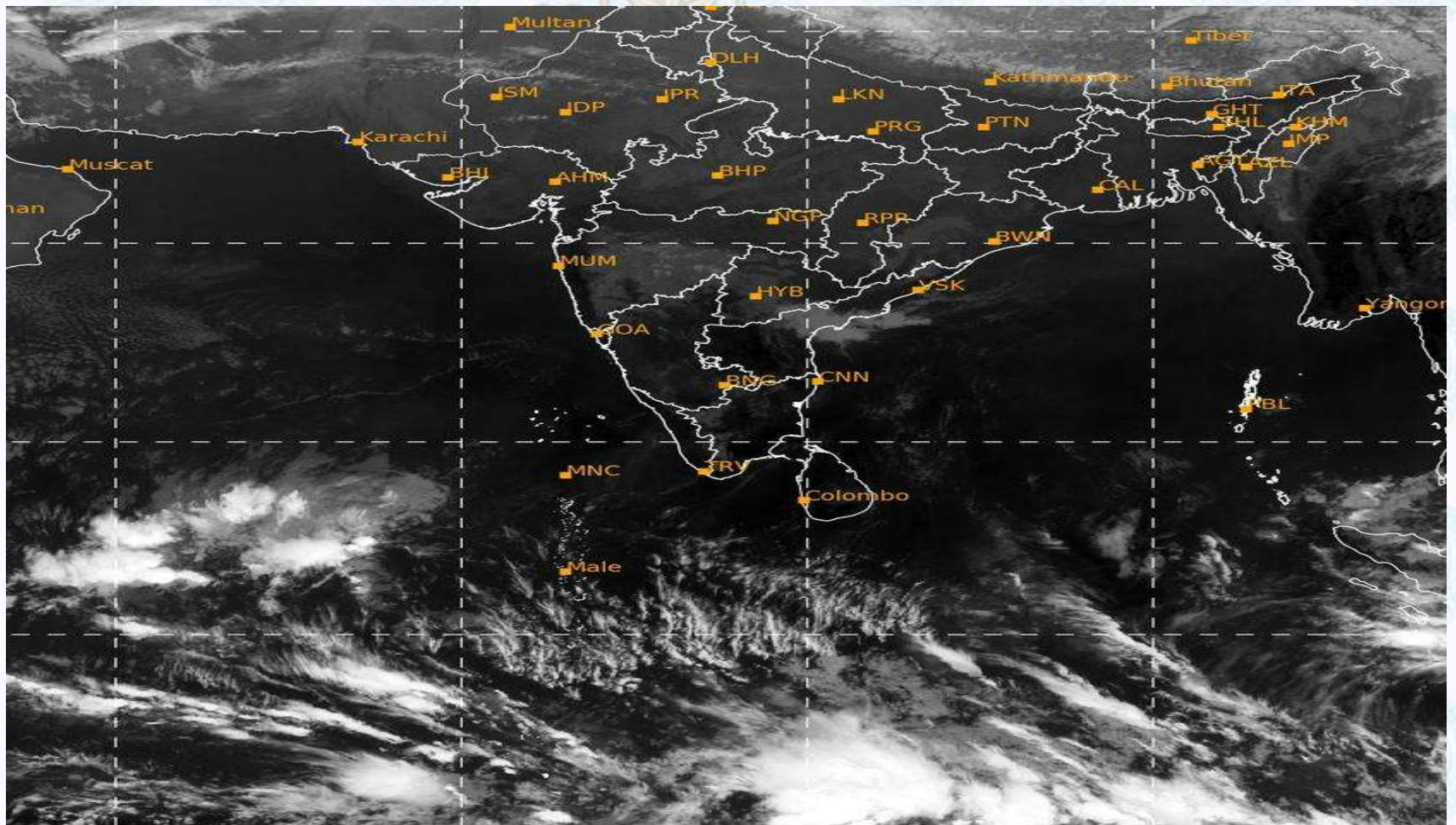
GENERAL WEATHER FORECAST – KHULNA

Description	11 Feb 2020	12 Feb 2020	13 Feb 2020
Temperature(C)	26°C/ 12°C	26°C/ 12°C	26°C/ 14°C
Summary	Sunny	Sunny	Sunny
Sun Rise/Set	6h36m48s/17h55m48s	6h36m12s/17h56m24s	6h35m36s/17h57m00s
Day Length	11h19m00s	11h20m12s	11h21m24s
Moon Rise/Set	8:13PM 8:14AM	9:17PM 8:58AM	10:19PM 9:40AM
Moon Phase/illu	Waning Gibbous, 94%	Waning Gibbous, 86%	Waning Gibbous, 77%
NauticalTwilight	0547, 1845	0546, 1845	0546, 1846
Civil Twilight	0613.,1818	0613.,1819	0612.,1819
Humidity	D : 53% N : 69%	D : 51% N : 69%	D : 55% N : 72%
Barometer (mb)	1017	1017	1016
Visibility	Good	Good	Good
Precip Chance	1%	1%	1%
Wind (mph)	12 km/h NNW	15 km/h NW	12 km/h WNW

Ref: <https://weather.com/weather/5day//BGXX0005:1:BG>



SATELLITE VIEW OF BAY OF BENGAL

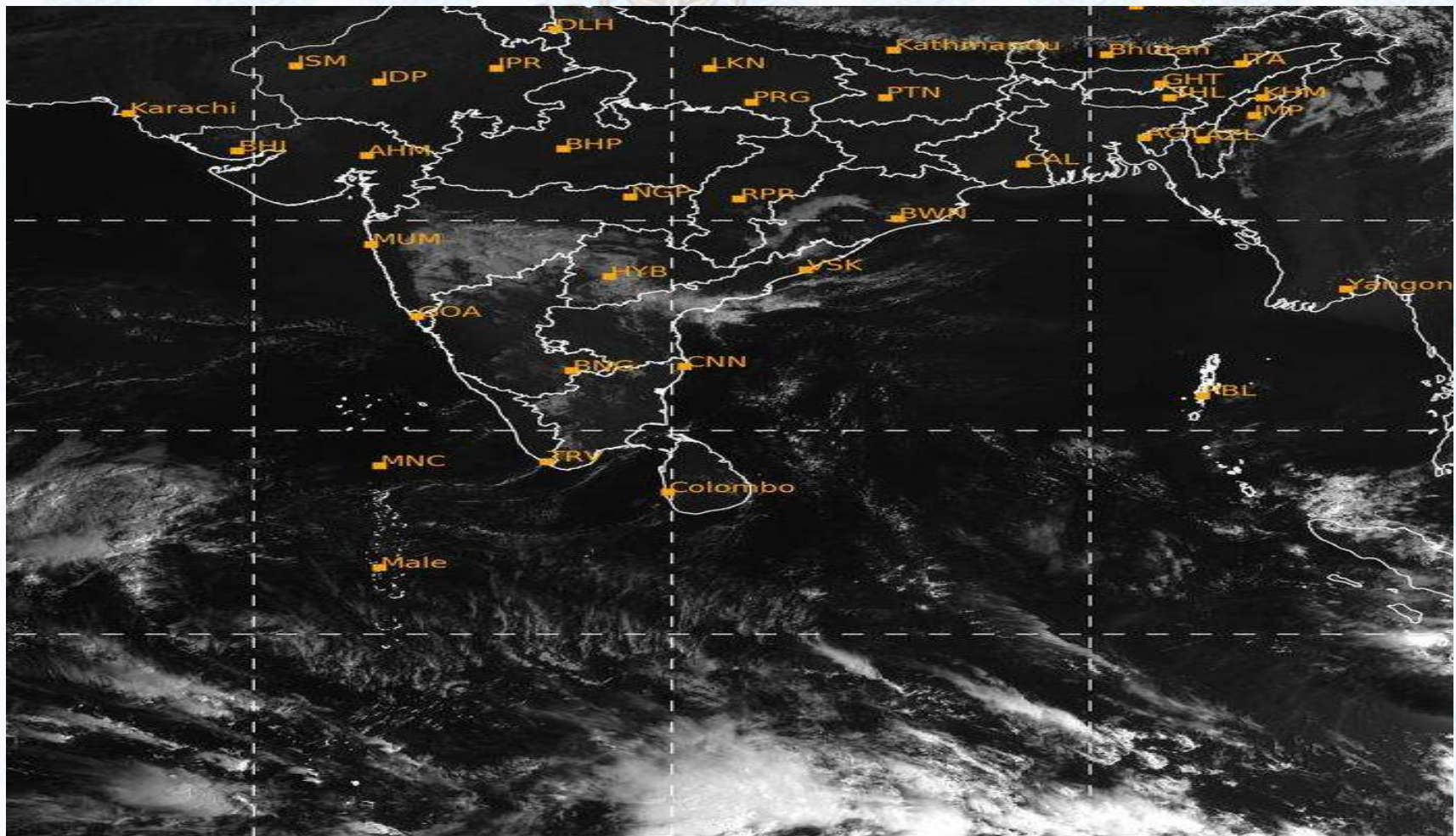


10/02/2020, 10:00 UTC MATSAT-IR

Ref: <http://satellite.imd.gov.in/insat.htm>



SATELLITE VIEW OF BAY OF BENGAL



10/02/2020, 10:00 MATSAT-VIS

Ref: <http://satellite.imd.gov.in/insat.htm>



Fleet Forecast Sea Area C-90 (Valid for 12 Hrs Commencing 1000 UTC of 10.02.2020)

Part One	NO STORM WARNING.	
Part Two	SEASONAL LOW LIES OVER SOUTH BAY.	
Part Three	Weather	TEMPORARY PARTLY CLOUDY OVER AREA C-90.
	Wind	NORTH/NORTH-EASTERLY, 08-12 KTS.
	Visibility	02-04 KMS, REDUCING TO 1000 M OR LESS IN FOG/ MIST.
	Outlook	FOR SUBSEQUENT 12 HOURS: LITTLE CHANGE.
	MSL Pressure	AT =10,0000 UTC. CHATTOGRAM =1015 HPA



Inland River Port Warning (VALID TILL 06 PM OF 10.02.2020)

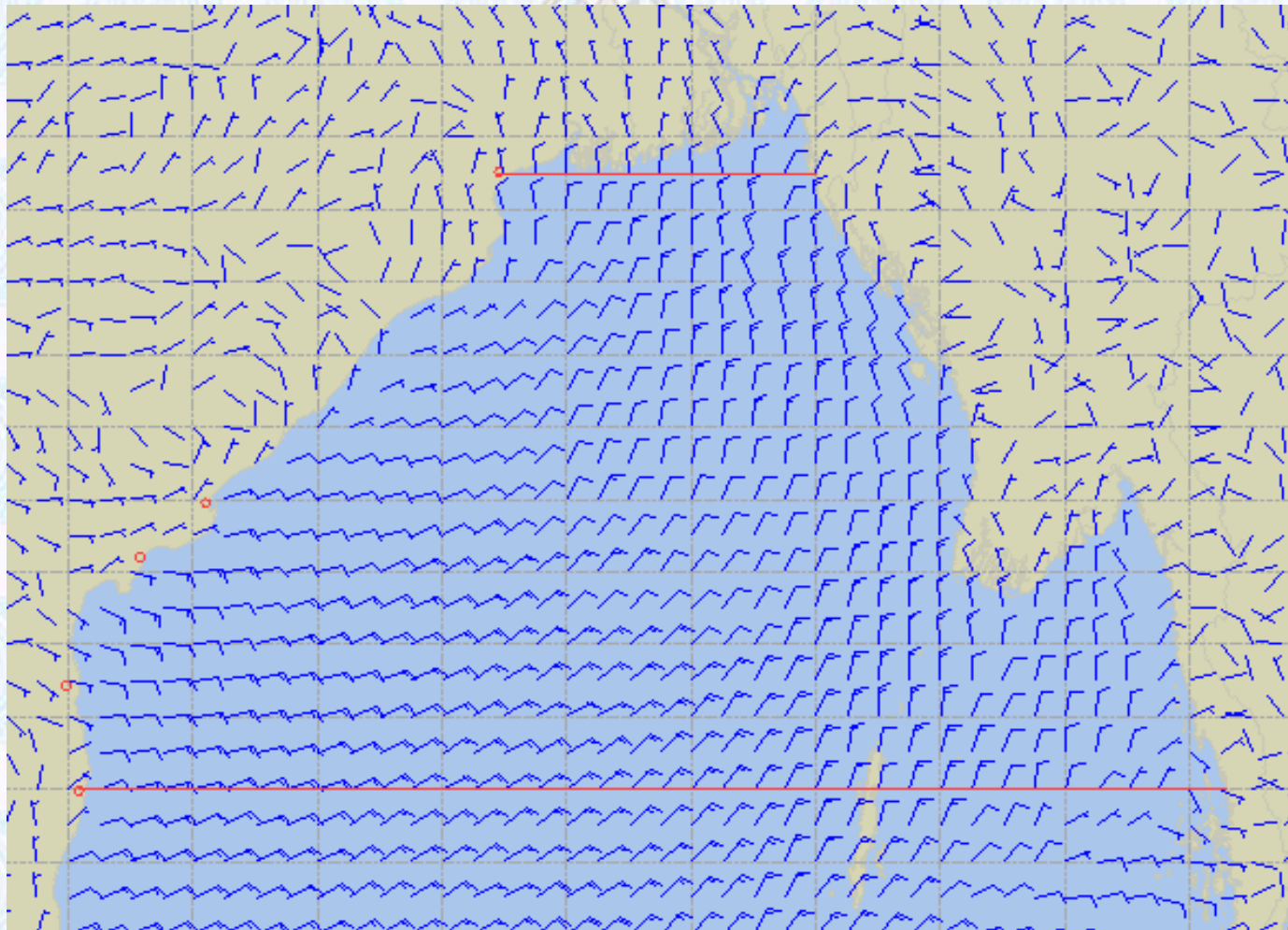
THERE IS NO INLAND RIVERPORTS WARNING & NO SIGNAL IS TO BE HOISTED.



Ref: <http://www.bmd.gov.bd/?/home>



Surface Wind Forecast- 11 Feb - 2020



Legend:



**Calm
Winds**



5 Knots



10 Knots



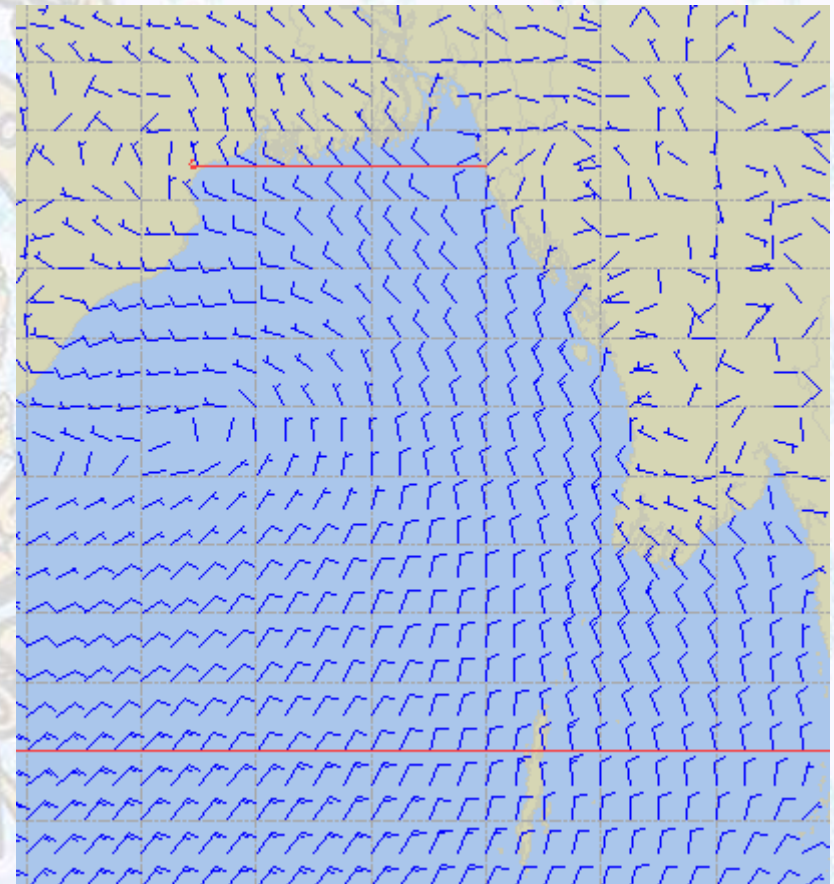
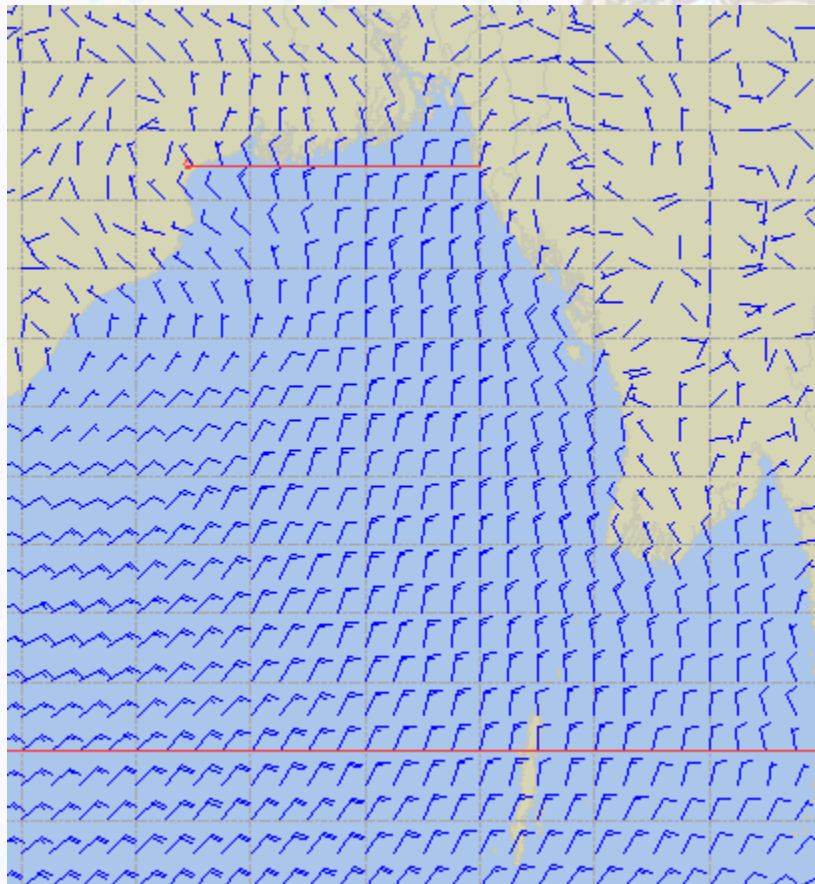
60 Knots



Surface Wind Forecast – 12 & 13 Feb - 2020

12 Feb 2020 Wednesday

13 Feb 2020 Thursday



Legend:



Calm
Winds



5 Knots



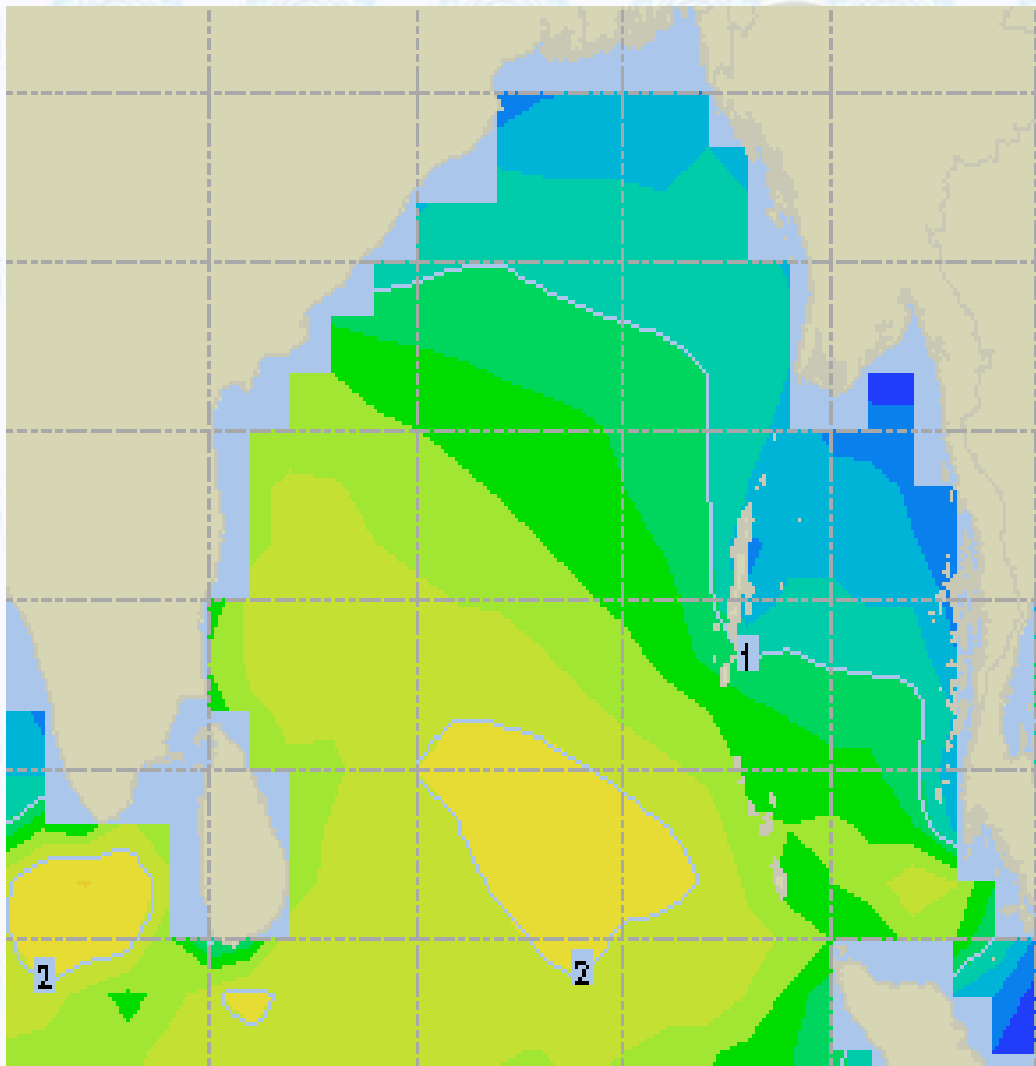
10 Knots



60 Knots



Sea State Forecast - 11 Feb - 2020



Sea State	Ht (m)
0	0-0.1
1	0-0.1
2	0.1-0.5
3	0.5-1.25
4	1.25-2.5
5	2.5-4.0
6	4-6
7	6-9
8	9-14
9	Over 14

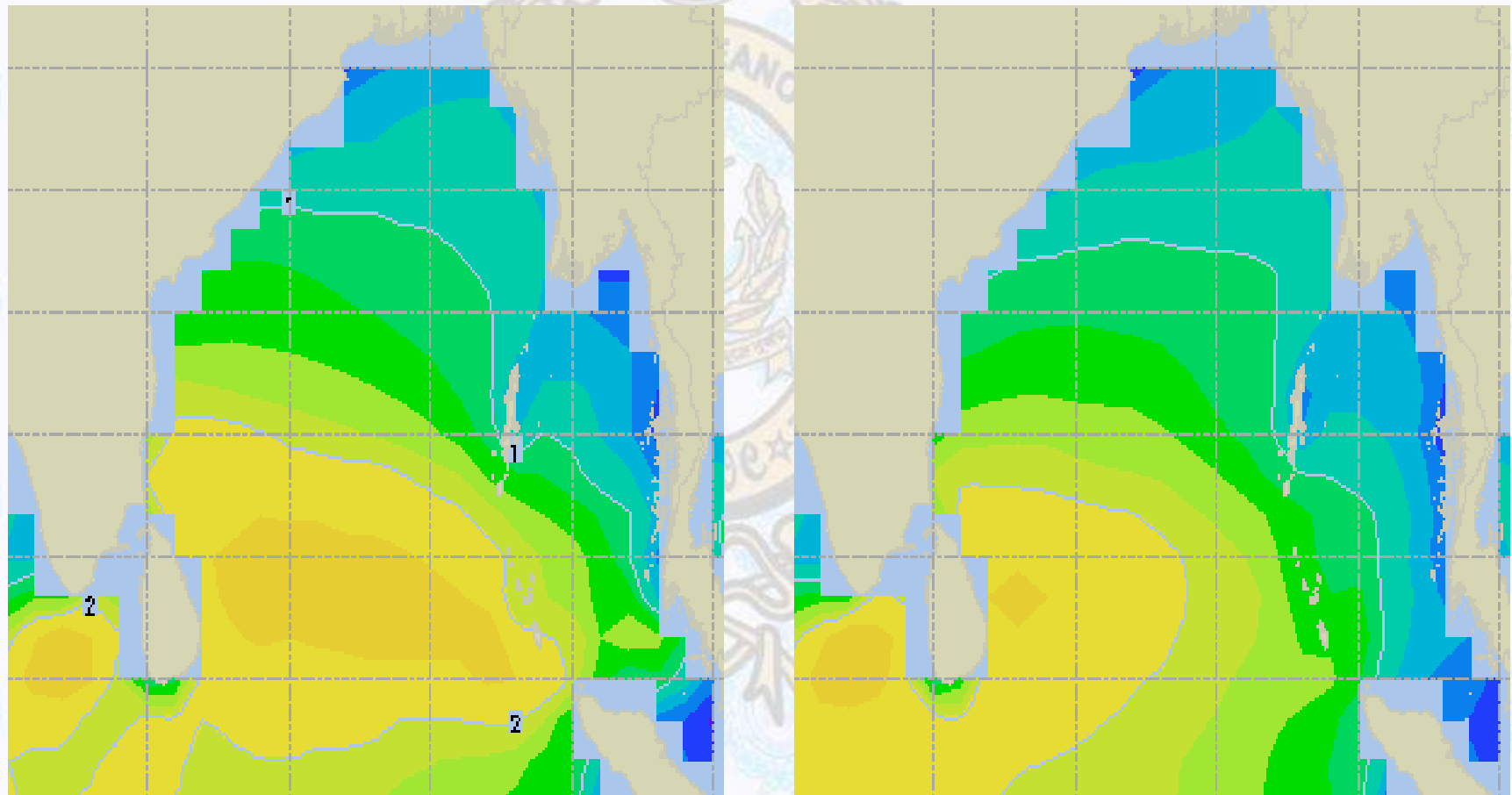




Sea State Forecast - 12 & 13 Feb - 2020

12 Feb 2020 Wednesday

13 Feb 2020 Thursday

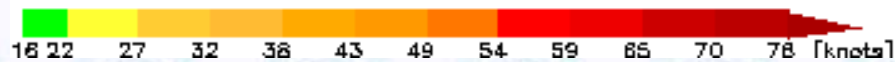
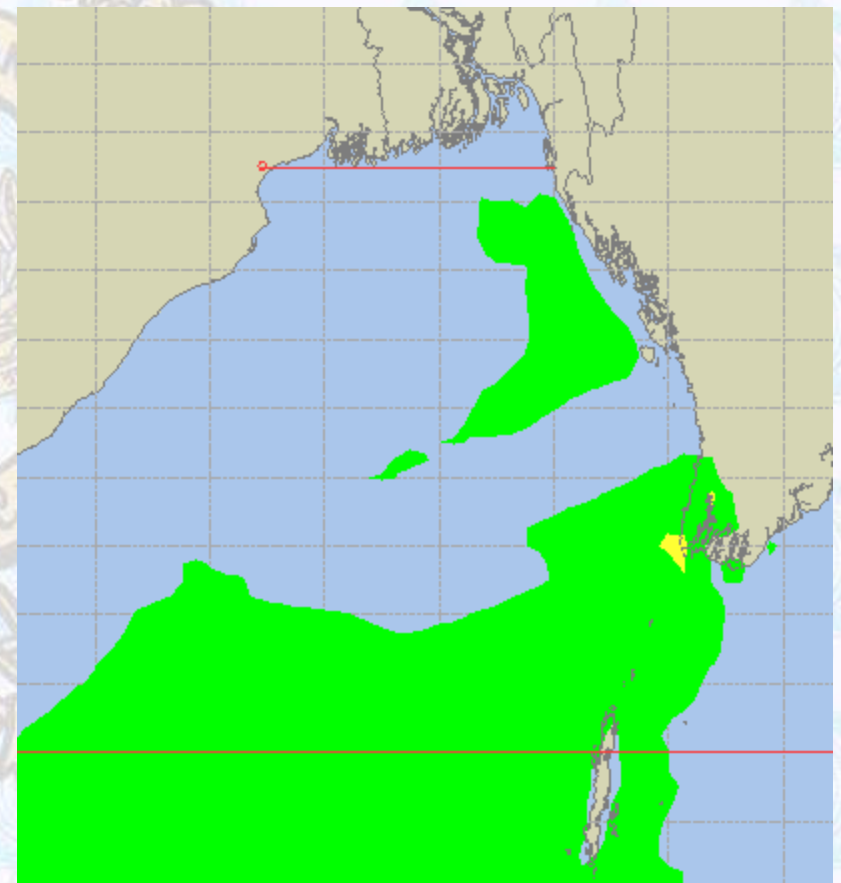
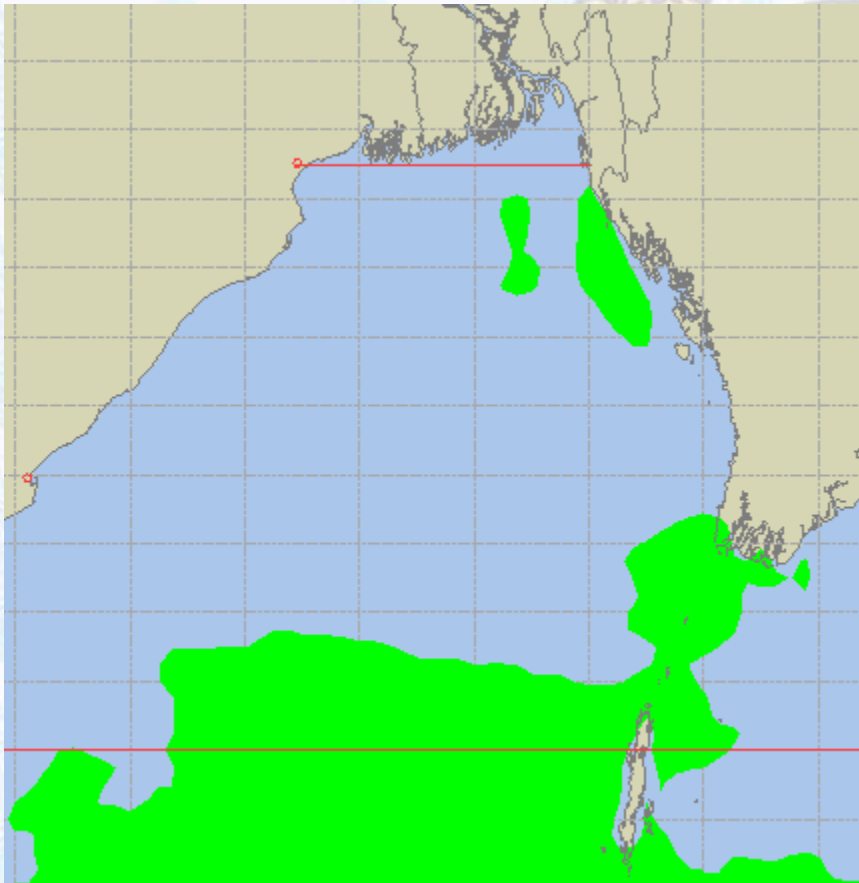




Peak Gusting Possibilities – 11 & 12 Feb - 2020

11 Feb 2020 Tuesday

12 Feb 2020 Wednesday

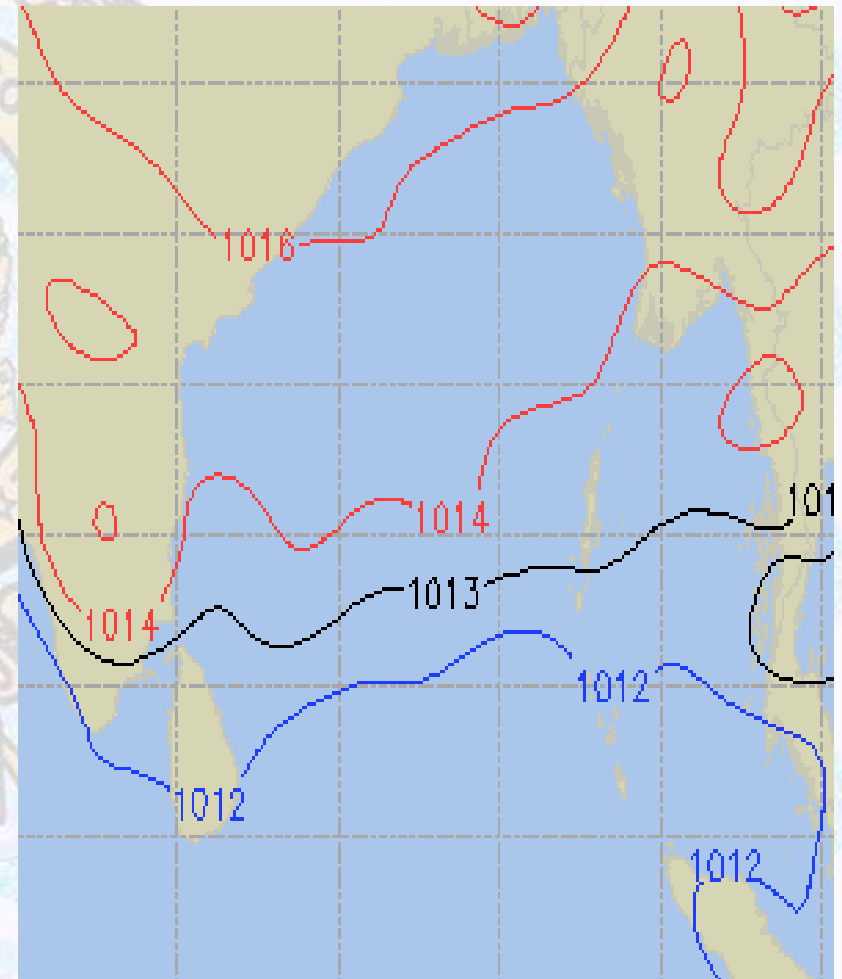
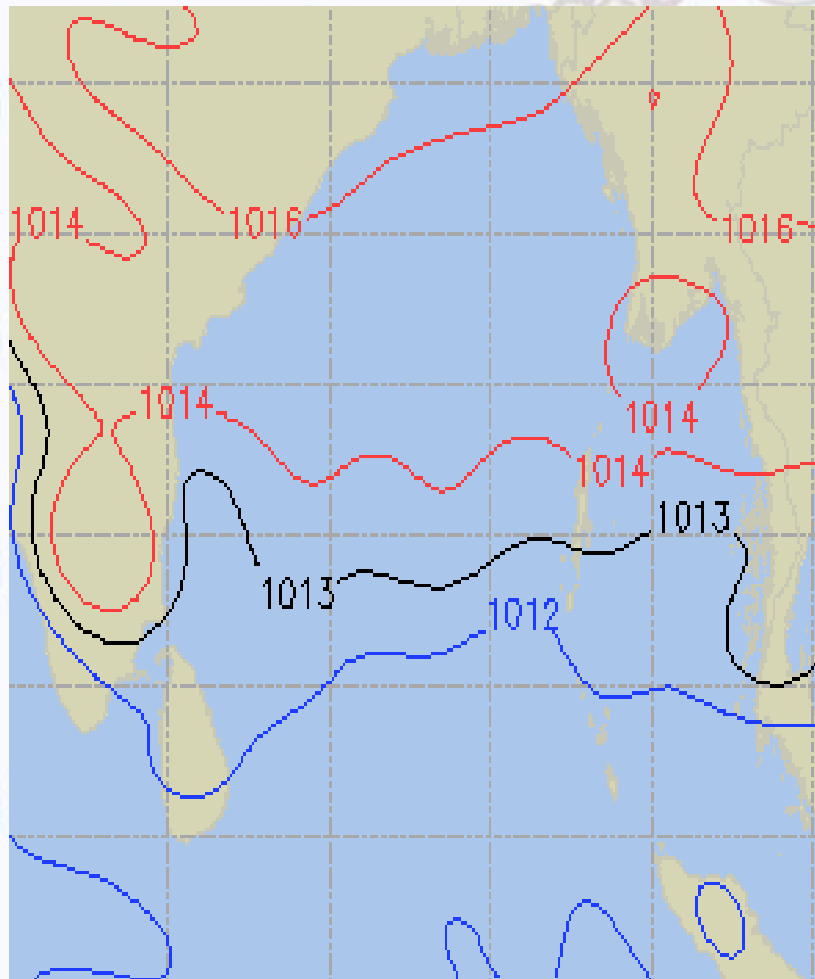




Surface Pressure forecast – 11 & 12 Feb - 2020

11 Feb 2020 Tuesday

12 Feb 2020 Wednesday

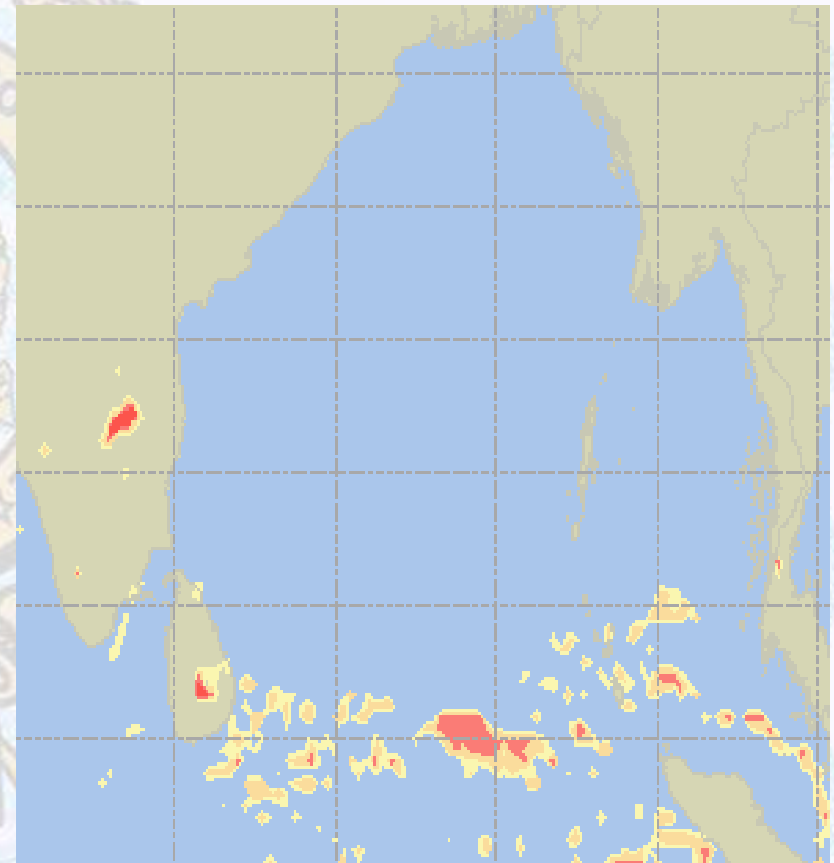
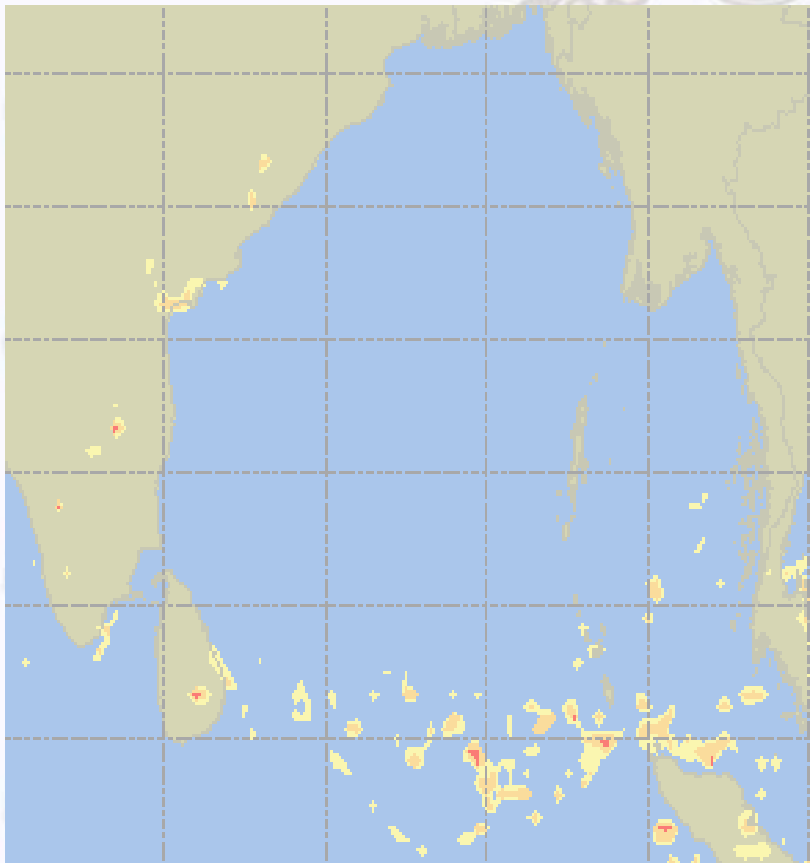




Visibility at Sea Forecast – 11 & 12 Feb - 2020

11 Feb 2020 Tuesday

12 Feb 2020 Wednesday



Visibility Scale:



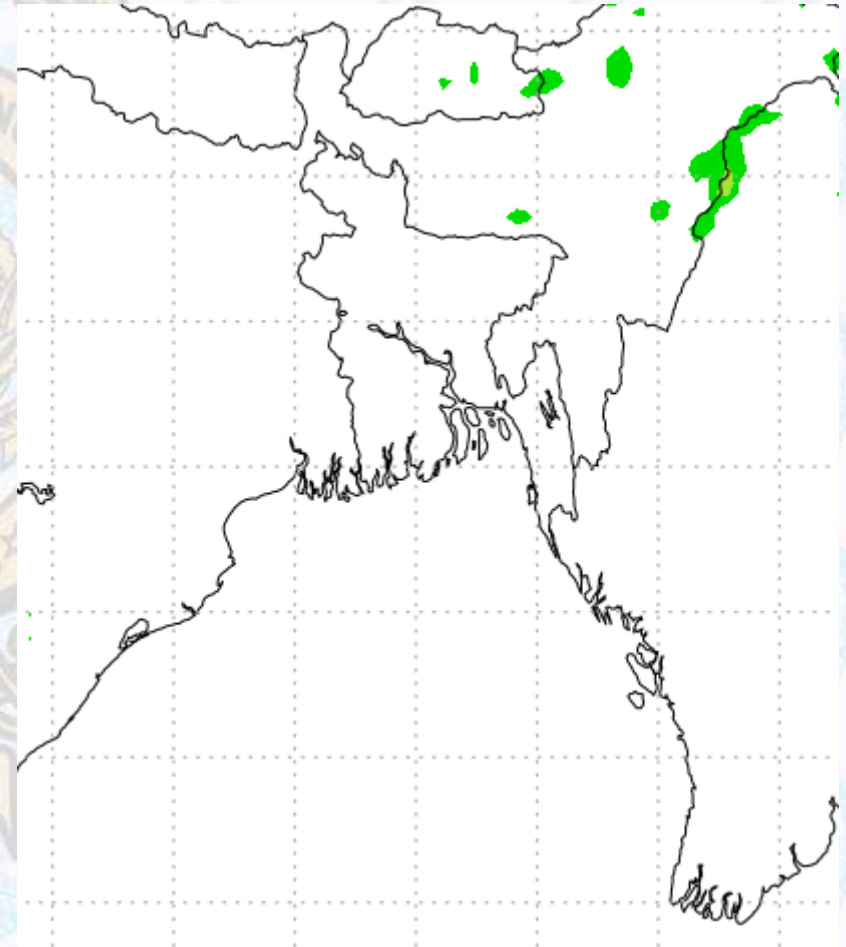
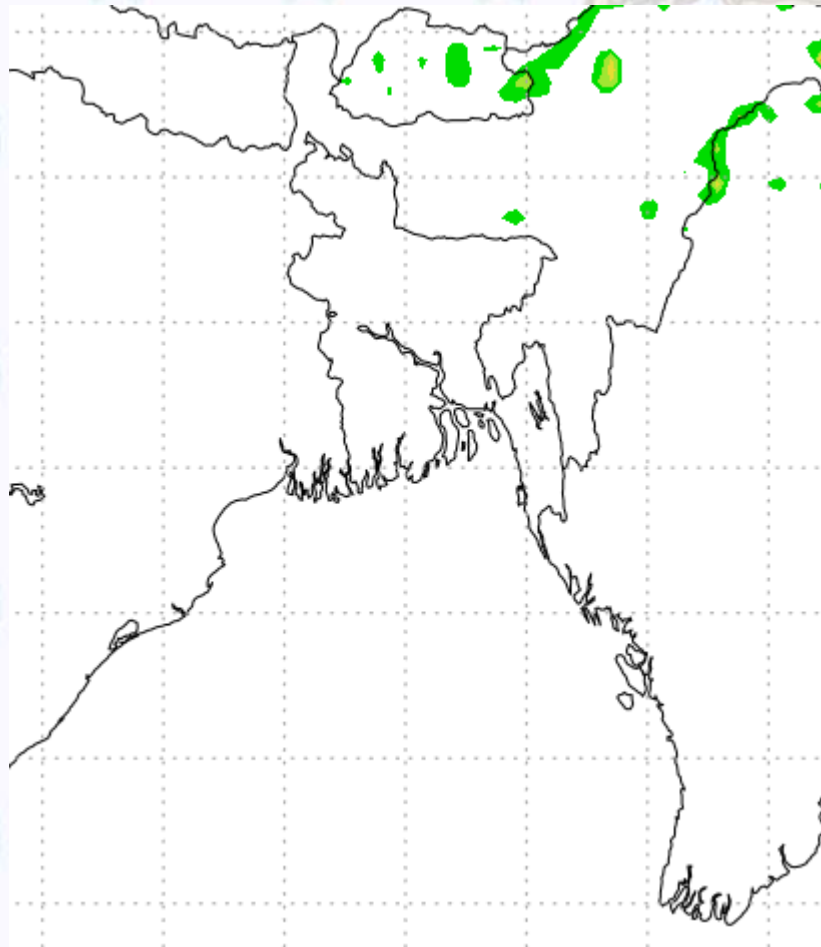
Ref (Slide 12-18): <http://www.weatheronline.co.uk/marine/weather?LEVEL>



Precipitation

Rain(mm) 11 & 12 Feb 20

Rain(mm) 12 & 13 Feb 20



Precipitation Scale (mm):





Tidal Information

KHAL NO. 10

COX'S BAZAR

HIRAN POINT

	Time	Height		Time	Height		Time	Height
	11Feb 2020	0155		4.50			0629	0.07
	0853	0.26		1202	3.28		1218	2.80
	1426	4.16		1842	0.06		1829	0.21
	2100	0.34		-	-		-	-
	Time	Height		Time	Height		Time	Height
	12Feb 2020	0236		4.50			0026	3.60
	0932	0.17		0709	0.05		0700	0.12
	1509	4.21		1245	3.24		1259	2.80
	2143	0.35		1923	0.10		1910	0.28
	Time	Height		Time	Height		Time	Height
	13Feb 2020	0322		4.39			0108	3.45
	1012	0.17		0748	0.11		0738	0.18
	1558	4.16		1329	3.12		1341	2.74
	2229	0.44		2005	0.20		1952	0.43