



WEATHER FORECAST FOR BN

09 - 12 FEB 2020





WEATHER FORECAST – DHAKA

09.02.2020

Hourly	2 PM	4 PM	8 PM	11 PM
Temp. / Dew Point	25 / 12	25 / 12	20 / 13	19 / 13
Wind	12 km/h NNW	12 km/h NW	7 km/h NW	8 km/h NW
Humidity	46%	47%	60%	68%
Chance of Precip	1%	1%	1%	3%
Cloud Cover	40%	25%	6%	2%
Conditions	Cloudy	Sunny	Clear	Clear
Sunrise Sunset	6: 37 AM 5: 50 PM			

Conditions

Pressure : 1016 hpa

Visibility : 11.22 km

Ref: <https://www.wunderground.com/weather/bd/dhaka>



WEATHER FORECAST – CHATTOGRAM

09.02.2020

Hourly	2 PM	4 PM	8 PM	11 PM
Temp. / Dew Point	24 / 14	24 / 14	22 / 16	21 / 16
Wind	17 km/h NNW	14 km/h NW	7 km/h NW	9 km/h NNW
Humidity	47%	50%	60%	62%
Chance of Precip.	1%	1%	1%	1%
Cloud Cover	63%	58%	60%	62%
Conditions	Cloudy	Cloudy	Cloudy	Cloudy
Sunrise Sunset	6: 29 AM 5: 46 PM			

Conditions

Pressure : 1015 hpa

Visibility : 4.02 Km

Ref: <https://www.wunderground.com/weather/bd/chittagong>



WEATHER FORECAST – KHULNA

09.02.2020

Hourly	2 PM	4 PM	8 PM	11 PM
Temp. / Dew Point	24 / 11	23 / 13	21 / 12	20 / 13
Wind	15 km/h NNW	13 km/h NNW	8 km/h NNW	5 km/h NNW
Humidity	53%	50%	68%	82%
Chance of Precip.	1%	1%	2%	3%
Cloud Cover	21%	19%	25%	27%
Conditions	Partly Cloudy	Partly Cloudy	Clear	Clear
Sunrise Sunset	6: 39 AM 5: 56 PM			

Conditions

Pressure : 1016 hpa

Visibility : 14.48 Km

Ref: <https://www.wunderground.com/weather/bd/khulna>



GENERAL WEATHER FORECAST – DHAKA

Description	10 Feb 2020	11 Feb 2020	12 Feb 2020
Temperature (C)	26 °C / 14 °C	27 °C / 14 °C	27 °C / 14 °C
Summary	Sunny	Sunny	Sunny
Sun Rise/Set	6h35m24s/17h50m36s	6h34m42s/17h51m12s	6h34m00s/17h51m48s
Day Length	11h15m12s	11h16m30s	11h17m48s
Moon Rise/ Set	7:03 AM 7:25AM	8:08PM 8:11AM	9:13PM 8:54AM
Moon Phase/ illu	Waxing Gibbous, 98%	Waxing Gibbous, 94%	Waxing Gibbous, 86%
Nautical Twilight	0545,1840	0545,1840	0545,1841
Civil Twilight	0611,1813	0611,1813	0611,1814
Humidity	D : 51% N : 67%	D : 54% N : 66%	D : 52% N : 67%
Barometer (mb)	1017	1017	1017
Visibility	Good	Good	Good
Precip Chance	0%	0%	0%
Wind (mph)	12 Km/h NW	12 Km/h NW	12 Km/h WNW

Ref: <https://weather.com/weather/5day//BGXX0003:1:BG>



GENERAL WEATHER FORECAST – CHATTOGRAM

Description	10 Feb 2020	11 Feb 2020	12 Feb 2020
Temperature (C)	26 °C/ 14 °C	26 °C/ 15 °C	26 °C/ 15 °C
Summary	Sunny	Sunny	Sunny
Sun Rise/Set	6h27m42s/17h46m48s	6h27m02s/17h47m18s	6h24m30s/17h47m54s
Day Length	11h19m06s	11h20m12s	11h21m24s
Moon Rise/ Set	6:59 AM 7:17AM	8:08PM 8:11AM	9:13PM 8:54AM
Moon Phase/ illu	Waxing Gibbous, 98%	Waxing Gibbous, 94%	Waxing Gibbous, 86%
Nautical Twilight	0538, 1836	0538, 1836	0538, 1837
Civil Twilight	0604.,1809	0604.,1809	0605.,1809
Humidity	D : 60% N : 70%	D : 57% N : 71%	D : 56% N : 72%
Barometer (mb)	1016	1016	1016
Visibility	Good	Good	Good
Precip Chance	0%	0%	0%
Wind (mph)	14 km/h NW	14 km/h NW	14 km/h NW

Ref: <https://weather.com/weather/5day//BGXX0002:1:BG>



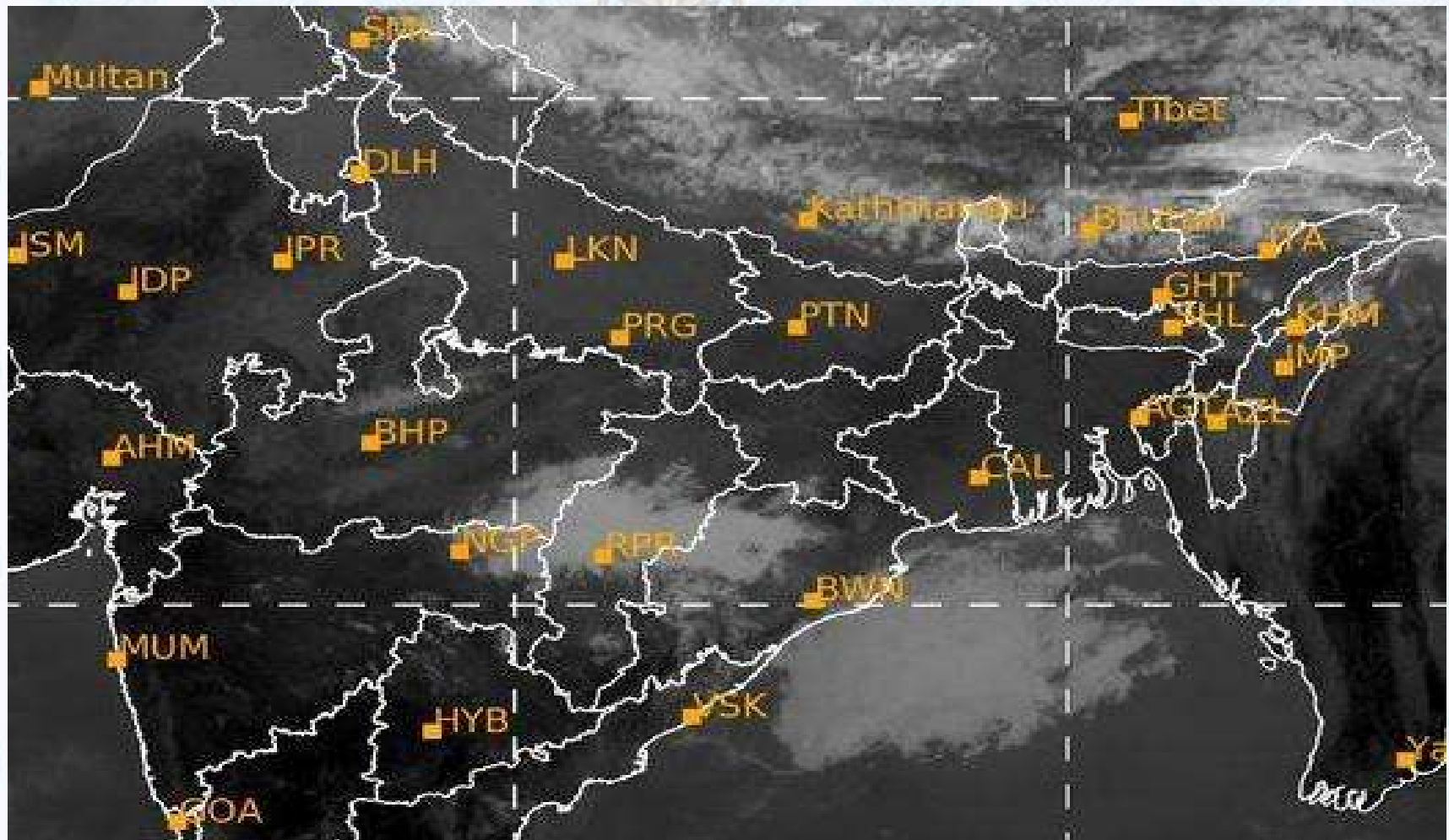
GENERAL WEATHER FORECAST – KHULNA

Description	10 Feb 2020	11 Feb 2020	12 Feb 2020
Temperature(C)	25 °C/ 12 °C	26 °C/ 12 °C	26 °C/ 12 °C
Summary	Sunny	Sunny	Sunny
Sun Rise/Set	6h37m30s/17h55m18s	6h36m48s/17h55m48s	6h36m12s/17h56m24s
Day Length	11h17m48s	11h19m00s	11h20m12s
Moon Rise/Set	7:09 AM 7:28AM	8:08PM 8:11AM	9:13PM 8:54AM
Moon Phase/illu	Waxing Gibbous, 98%	Waxing Gibbous, 94%	Waxing Gibbous, 86%
Nautical Twilight	0547, 1844	0547, 1844	0547, 1844
Civil Twilight	0614.,1818	0614.,1818	0614.,1819
Humidity	D : 50% N : 71%	D : 52% N : 72%	D : 50% N : 74%
Barometer (mb)	1017	1017	1017
Visibility	Good	Good	Good
Precip Chance	0%	0%	0%
Wind (mph)	12 km/h NNW	13 km/h NNW	13 km/h NW

Ref: <https://weather.com/weather/5day//BGXX0005:1:BG>



SATELLITE VIEW OF BAY OF BENGAL

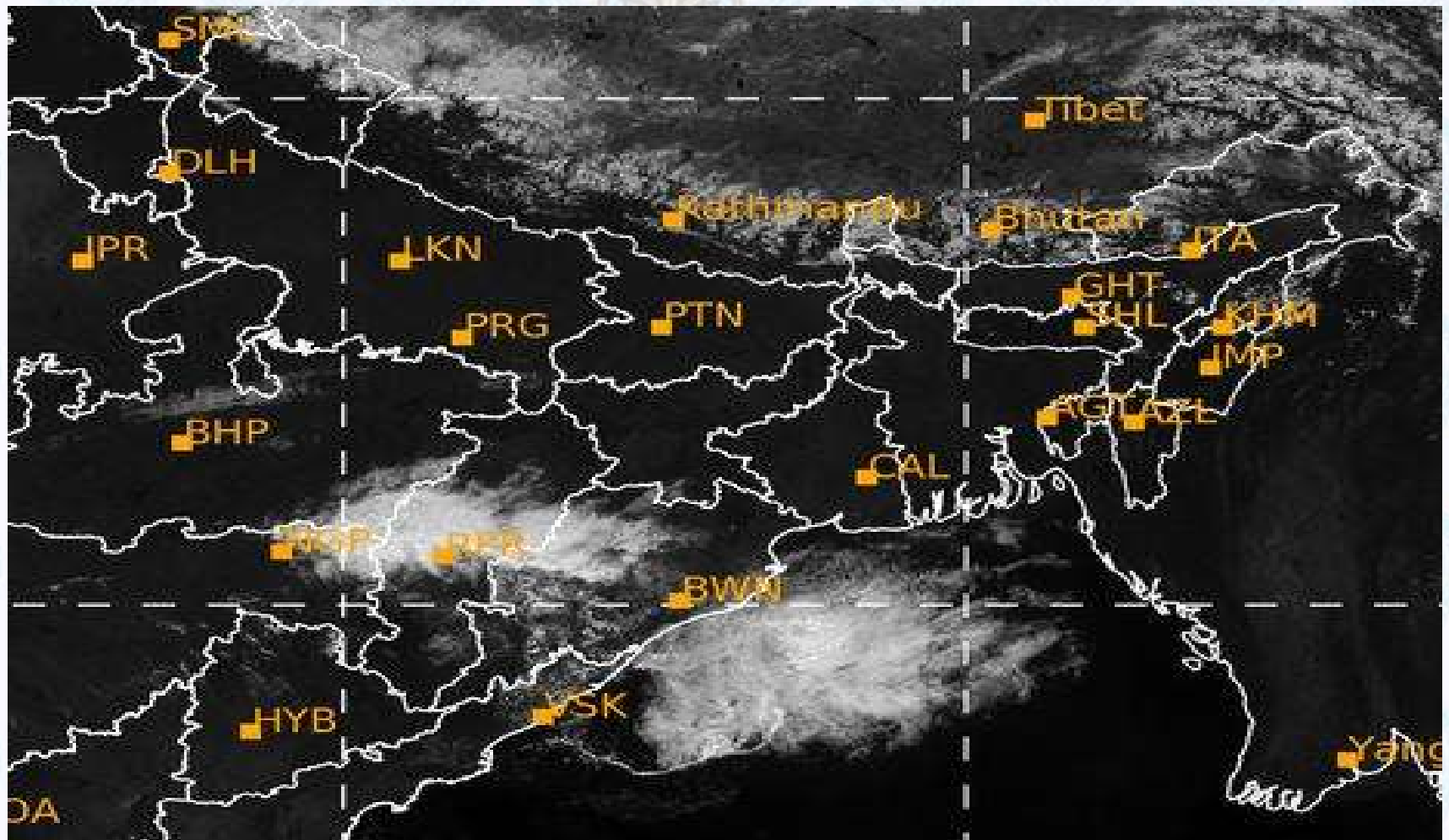


09/02/2020, 10:00 UTC MATSAT-IR

Ref: <http://satellite.imd.gov.in/insat.htm>



SATELLITE VIEW OF BAY OF BENGAL



09/02/2020, 11:00 MATSAT-VIS

Ref: <http://satellite.imd.gov.in/insat.htm>



Fleet Forecast Sea Area C-90 (Valid for 12 Hrs Commencing 1000 UTC of 09.02.2020)

Part One	NO STORM WARNING.	
Part Two	SEASONAL LOW LIES OVER SOUTH BAY.	
Part Three	Weather	TEMPORARY PARTLY CLOUDY OVER AREA C-90.
	Wind	N/NE'LY, 08-15 KTS.
	Visibility	03-05 KMS, REDUCING TO 1500 M OR LESS IN MIST/ HAZE.
	Outlook	FOR SUBSEQUENT 12 HOURS: LITTLE CHANGE.
	MSL Pressure	AT =09,0000 UTC. CHATTOGRAM =1015 HPA



Inland River Port Warning (VALID TILL 06 PM OF 09.02.2020)

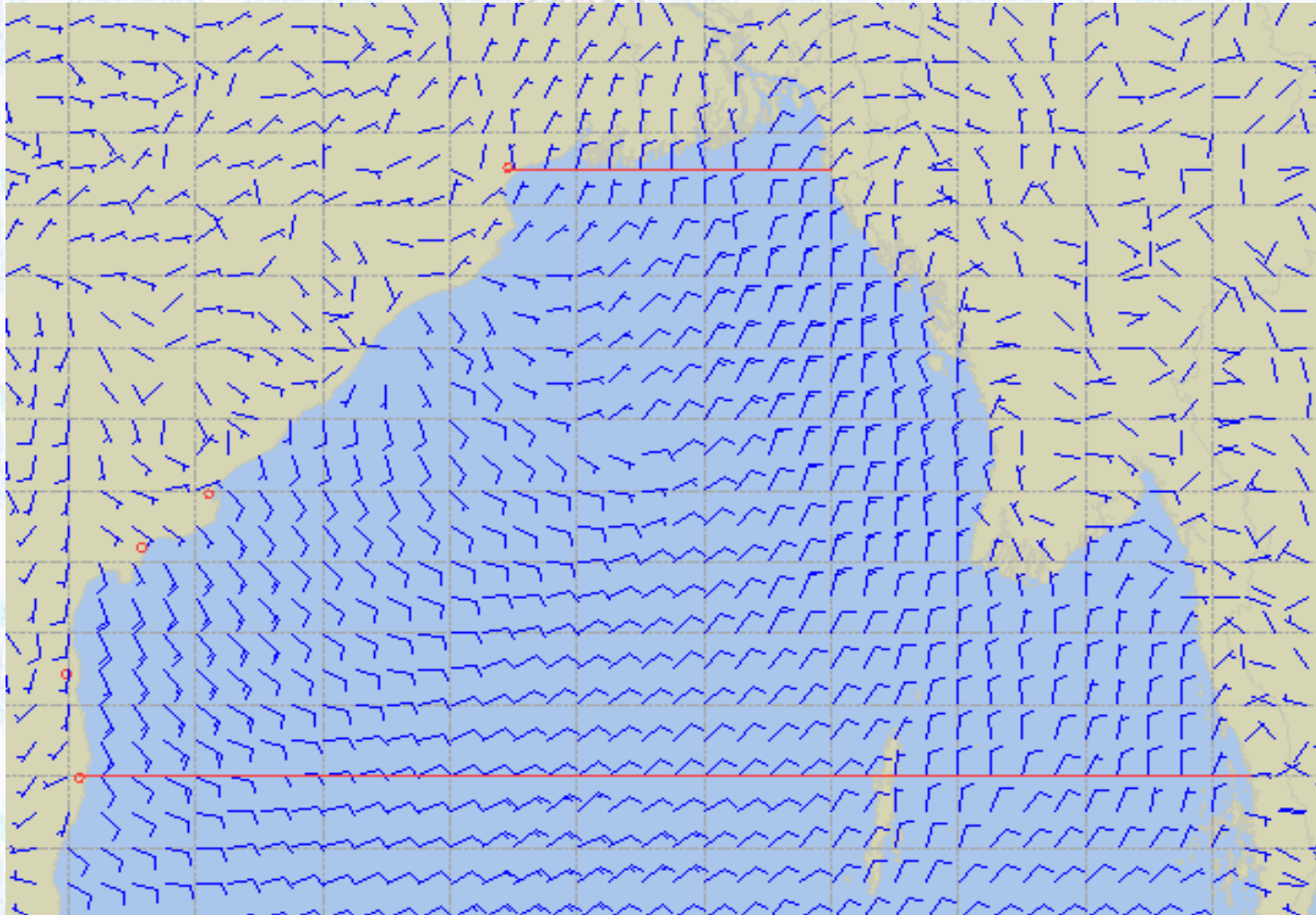
THERE IS NO INLAND RIVERPORTS WARNING & NO SIGNAL IS TO BE HOISTED.



Ref: <http://www.bmd.gov.bd/?/home>



Surface Wind Forecast- 10 Feb - 2020



Legend:



**Calm
Winds**



5 Knots



10 Knots



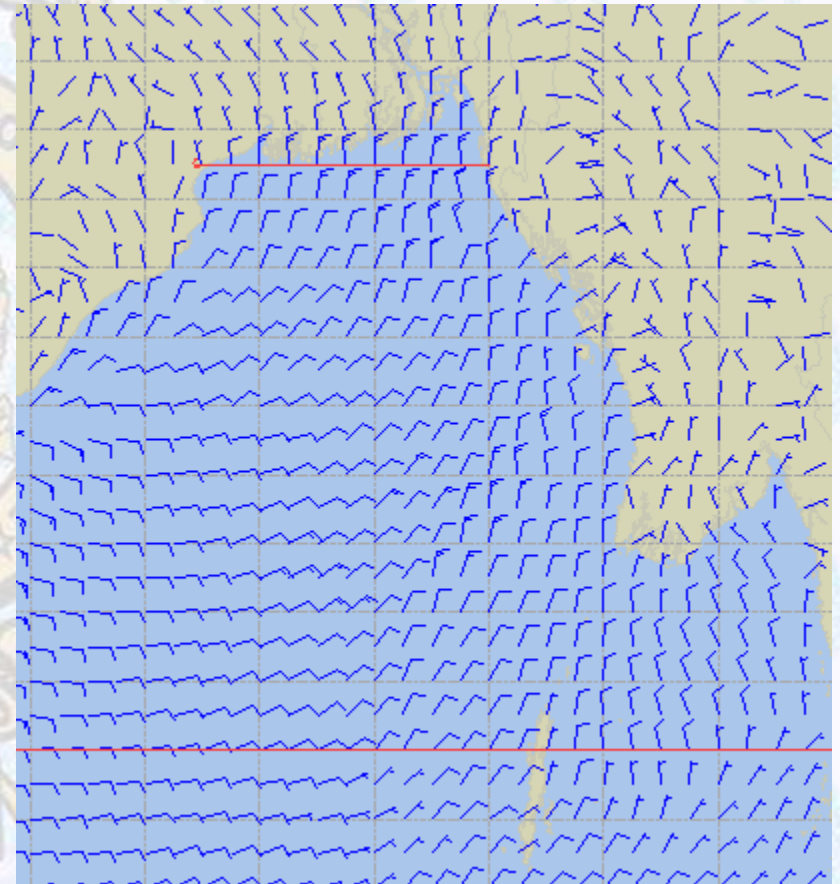
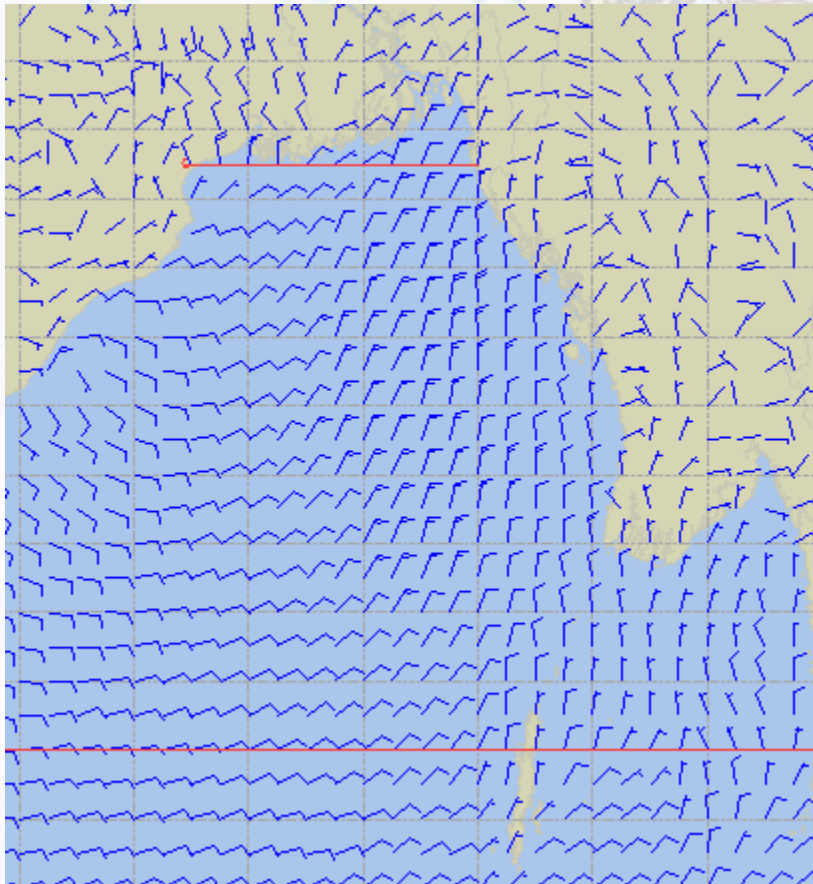
60 Knots



Surface Wind Forecast – 11 & 12 Feb - 2020

11 Feb 2020 Tuesday

12 Feb 2020 Wednesday



Legend:



Calm
Winds



5 Knots



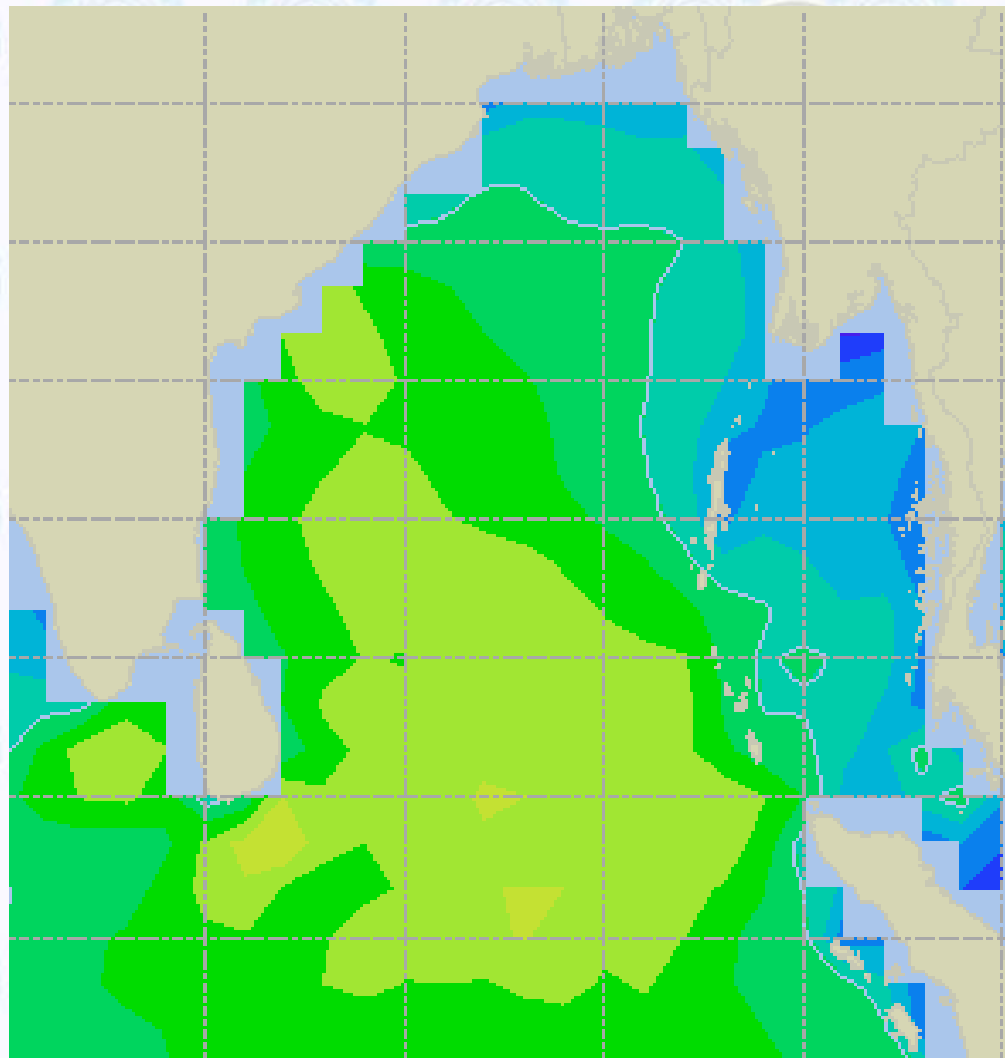
10 Knots



60 Knots



Sea State Forecast - 10 Feb - 2020



Sea State	Ht (m)
0	0-0.1
1	0-0.1
2	0.1-0.5
3	0.5-1.25
4	1.25-2.5
5	2.5-4.0
6	4-6
7	6-9
8	9-14
9	Over 14

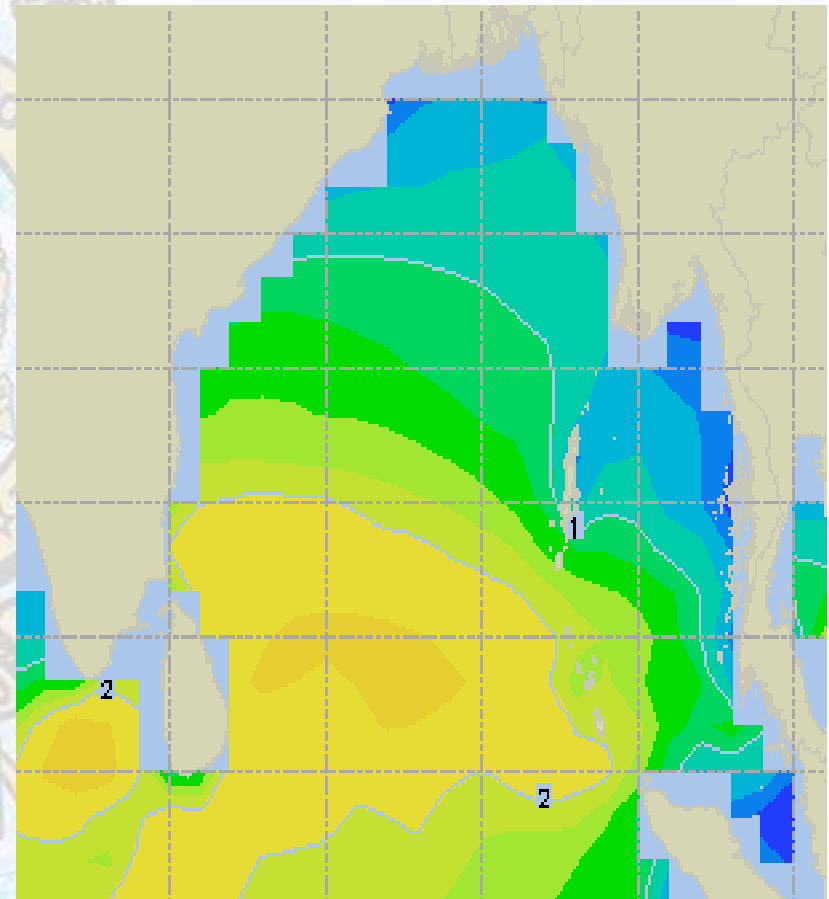
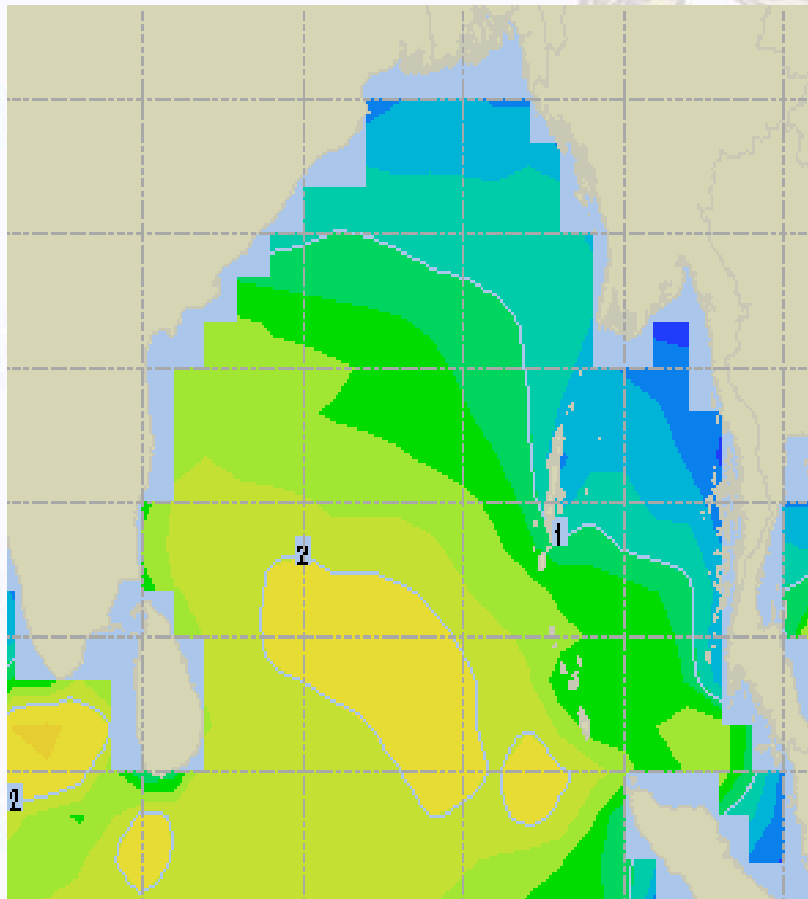




Sea State Forecast - 11 & 12 Feb - 2020

11 Feb 2020 Tuesday

12 Feb 2020 Wednesday

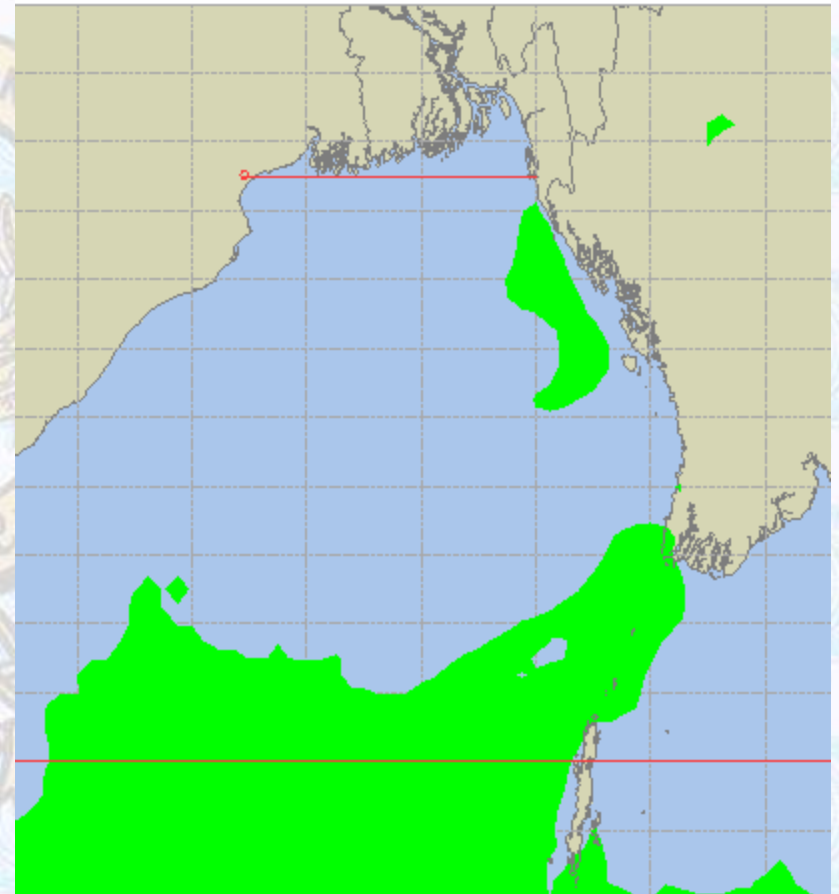
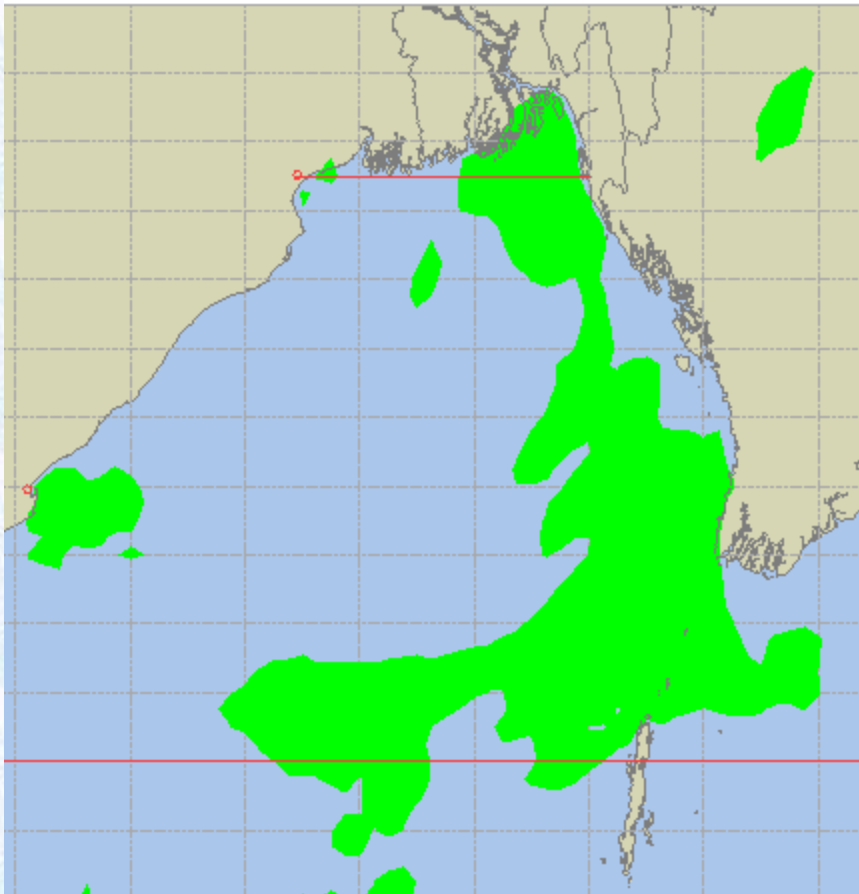




Peak Gusting Possibilities – 10 & 11 Feb - 2020

10 Feb 2020 Monday

11 Feb 2020 Tuesday

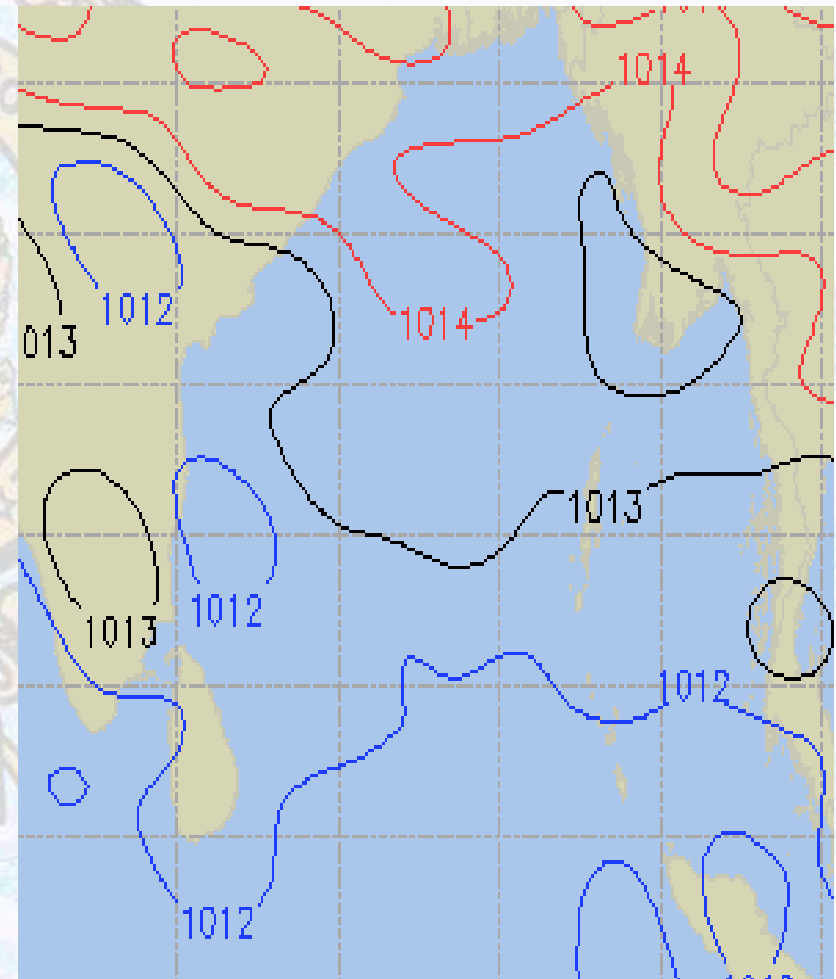
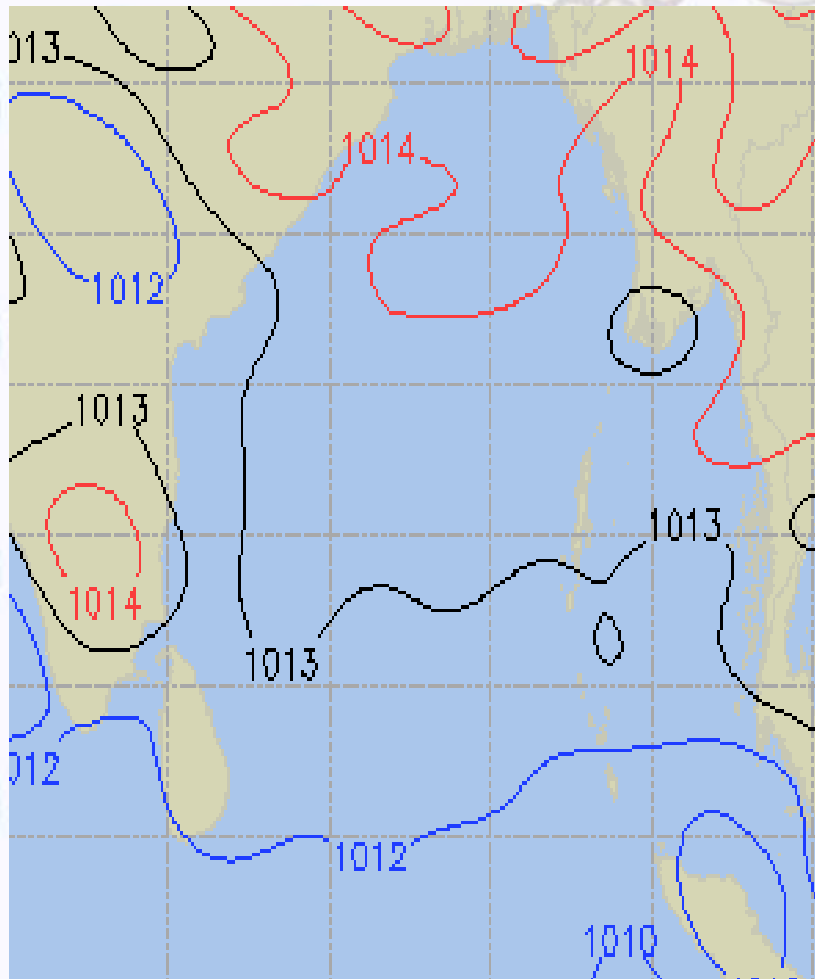




Surface Pressure forecast – 10 & 11 Feb - 2020

10 Feb 2020 Monday

11 Feb 2020 Tuesday

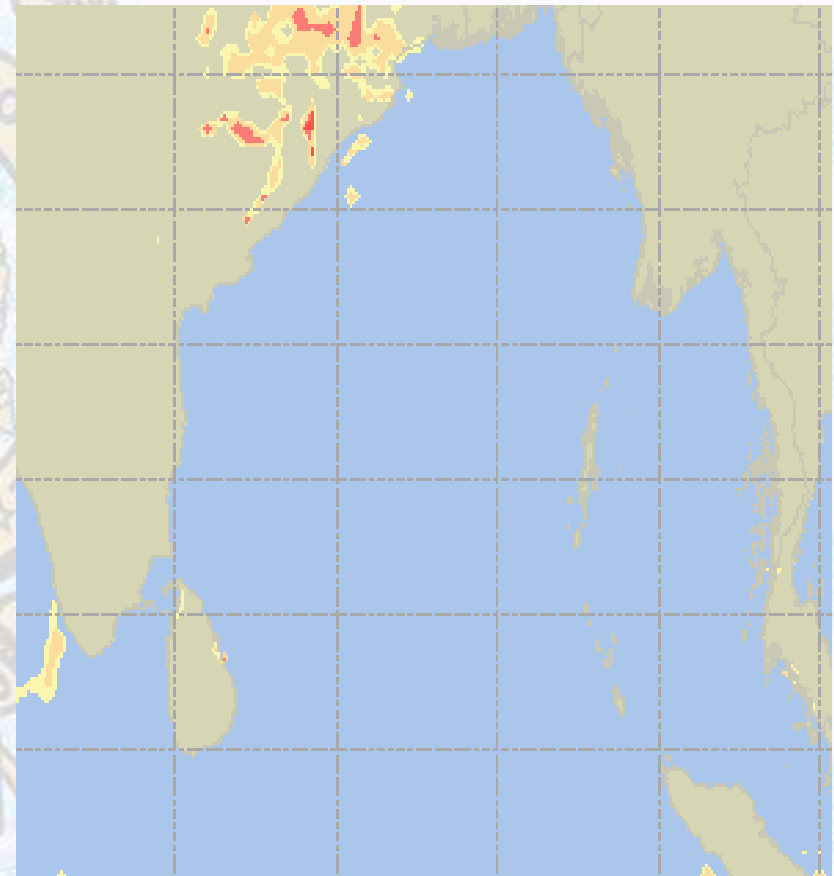
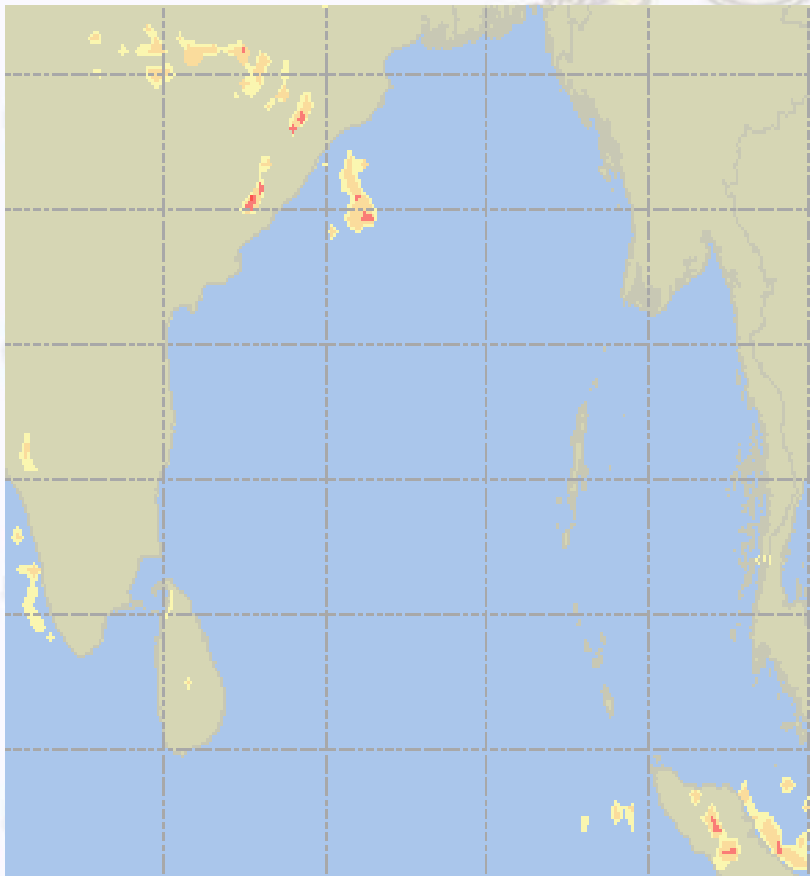




Visibility at Sea Forecast – 10 & 11 Feb - 2020

10 Feb 2020 Monday

11 Feb 2020 Tuesday



Visibility Scale:



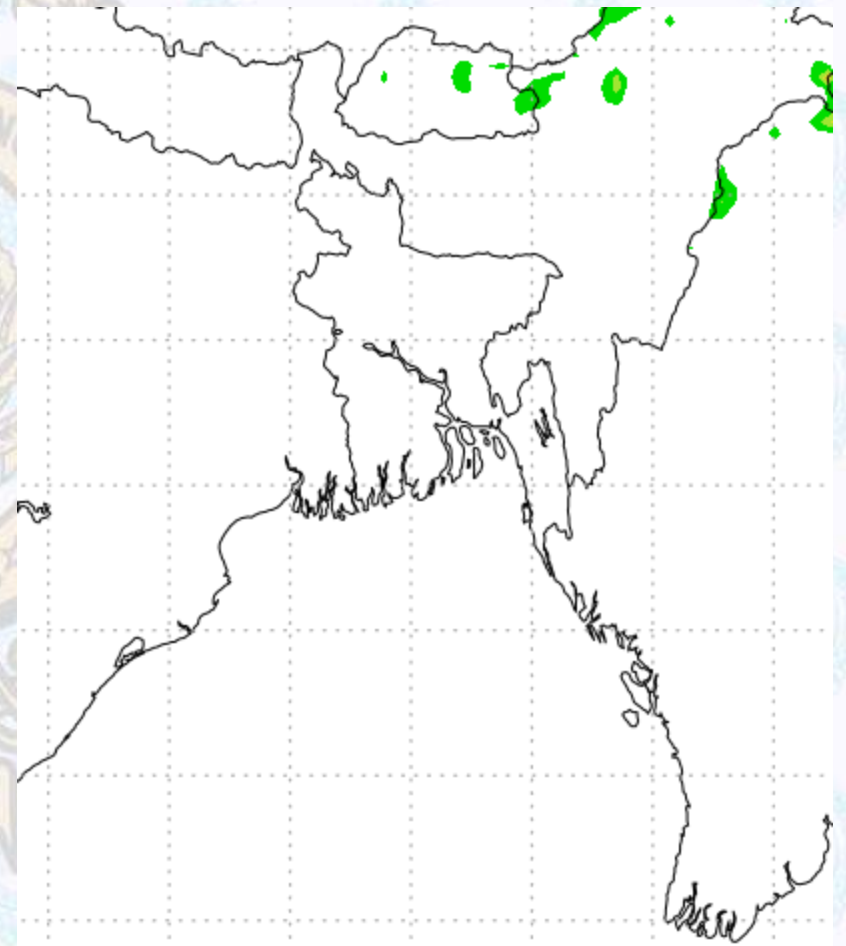
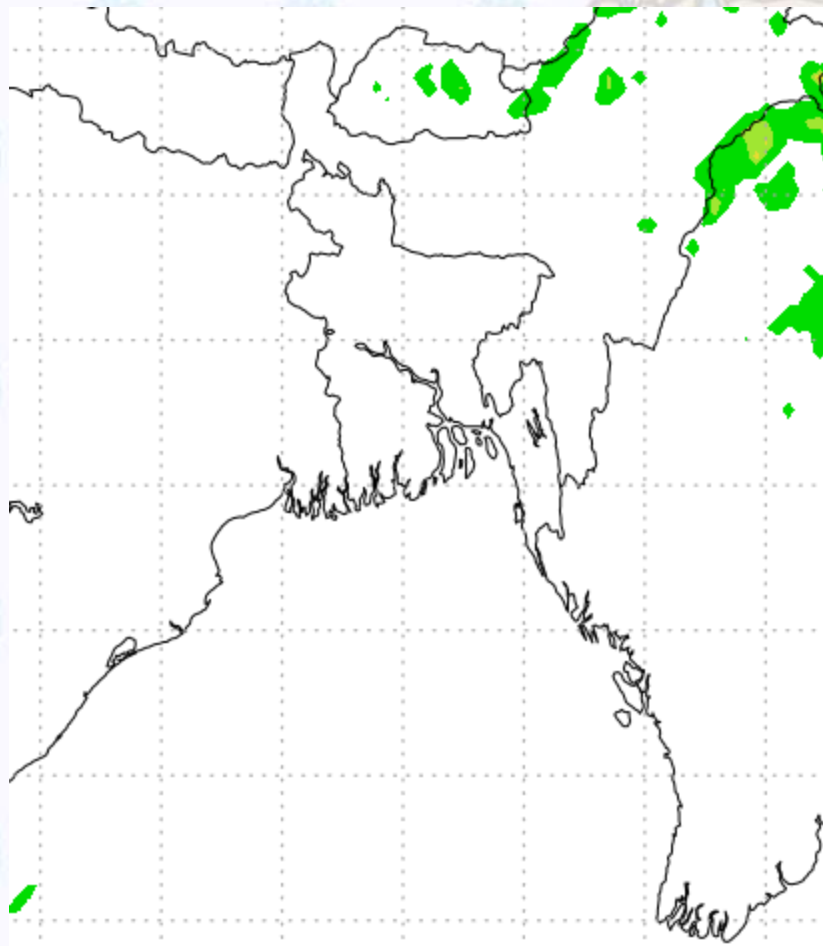
Ref (Slide 12-18): <http://www.weatheronline.co.uk/marine/weather?LEVEL>



Precipitation

Rain(mm) 10 & 11 Feb 20

Rain(mm) 11 & 12 Feb 20



Precipitation Scale (mm):





Tidal Information

KHAL NO. 10

COX'S BAZAR

HIRAN POINT

	Time	Height		Time	Height		Time	Height
10Feb 2020	0115	4.42		0548	0.14		0545	0.23
	0814	0.38		1120	3.23		1138	2.75
	1346	4.04		1801	0.08		1748	0.21
	2018	0.40		2345	3.65		2353	3.03
11Feb 2020	Time	Height		Time	Height		Time	Height
	0155	4.50		0629	0.07		0623	0.14
	0853	0.26		1202	3.28		1218	2.80
	1426	4.16		1842	0.06		1829	0.21
	2100	0.34		-	-		-	-
12Feb 2020	Time	Height		Time	Height		Time	Height
	0236	4.50		0026	3.60		0032	3.00
	0932	0.17		0709	0.05		0700	0.12
	1509	4.21		1245	3.24		1259	2.80
	2143	0.35		1923	0.10		1910	0.28