



WEATHER FORECAST FOR BN

30 JAN - 02 FEB 2020





WEATHERFORECAST – DHAKA

30.01.2020

Hourly	2 PM	4 PM	8 PM	11 PM
Temp. / Dew Point	24 / 18	24 / 17	21 / 17	19 / 17
Wind	7 km/h W	6 km/h NW	4 km/h NW	3 km/h W
Humidity	67%	66%	81%	86%
Chance of Precip	1%	1%	24%	20%
Cloud Cover	53%	40%	44	41%
Conditions	Partly Cloudy	Partly Cloudy	Partly Cloudy	Partly Cloudy
Sunrise Sunset	6: 41 AM 5: 44 PM			

Conditions

Pressure : 1013 hpa

Visibility : 3.22 km

Ref: <https://www.wunderground.com/weather/bd/dhaka>



WEATHER FORECAST – CHATTOGRAM

30.01.2020

Hourly	2 PM	4 PM	8 PM	11 PM
Temp. / Dew Point	25 / 16	24 / 17	21 / 18	20 / 18
Wind	5 km/h W	10 km/h W	7 km/h W	7 km/h WNW
Humidity	56%	66%	79%	86%
Chance of Precip.	1%	1%	6%	6%
Cloud Cover	56%	39%	30%	26%
Conditions	Partly Cloudy	Partly Cloudy	Partly Cloudy	Partly Cloudy
Sunrise Sunset	6: 33 AM 5: 40 PM			

Conditions

Pressure : 1013 hpa

Visibility : 3.54 Km

Ref: <https://www.wunderground.com/weather/bd/chittagong>



WEATHER FORECAST – KHULNA

30.01.2020

Hourly	2 PM	4 PM	8 PM	11 PM
Temp. / Dew Point	23 / 20	23 / 20	20 / 19	19 / 19
Wind	7 km/h SSW	8 km/h SW	4 km/h S	3 km/h W
Humidity	84%	87%	93%	97%
Chance of Precip.	46%	24%	35%	24%
Cloud Cover	62%	62%	50%	39%
Conditions	Mostly Cloudy	Mostly Cloudy	Mostly Cloudy	Mostly Cloudy
Sunrise Sunset	6: 43 AM 5: 50 PM			

Conditions

Pressure : 1013 hpa

Visibility : 1.69 Km

Ref: <https://www.wunderground.com/weather/bd/khulna>



GENERAL WEATHER FORECAST – DHAKA

Description	31 Jan 2020	01 Feb 2020	02 Feb 2020
Temperature (C)	24 °C / 13 °C	24 °C / 13 °C	24 °C / 12 °C
Summary	Partly Cloudy / Sunny	Partly Cloudy / Sunny	Partly Cloudy / Sunny
Sun Rise/Set	6h39m48s/17h43m48s	6h39m30s/17h44m30s	6h39m06s/17h45m12s
Day Length	11h04m00s	11h05m00s	11h06m06s
Moon Rise/ Set	10:36AM 11:11PM	----- ----- -----	11:44 AM 12:02 AM
Moon Phase/ illu	Waxing Crescent, 39%	Waxing Crescent, 1%	First Quarter, 49%
NauticalTwilight	0549,1834	0548,1835	0548,1835
Civil Twilight	0616,1807	0615,1808	0615,1808
Humidity	D : 73% N : 78%	D : 61% N : 75%	D : 59% N : 73%
Barometer (mb)	1013	1015	1016
Visibility	Moderate	Moderate	Moderate
Precip Chance	10%	10%	10%
Wind (mph)	11 Km/h WNW	11 Km/h NW	10 Km/h NW

Ref: <https://weather.com/weather/5day//BGXX0003:1:BG>



GENERAL WEATHER FORECAST– CHATTOGRAM

Description	31 Jan 2020	01 Feb 2020	02 Feb 2020
Temperature (C)	25 °C/ 14 °C	25 °C/ 14 °C	25 °C/ 13 °C
Summary	Partly Cloudy / Sunny	Partly Cloudy / Sunny	Partly Cloudy / Sunny
Sun Rise/Set	6h31m42s/17h40m18s	6h31m30s/17h40m54s	6h31m06s/17h41m36s
Day Length	11h08m36s	11h09m24s	11h10m30s
Moon Rise/ Set	10:30AM 11:05PM	11:04AM 11:55PM	-----II----- -----II-----
Moon Phase/ illu	Waxing Crescent, 39%	Waxing Crescent, 49%	First Quarter, 0%
Nautical Twilight	0541, 1830	0541, 1831	0541, 1831
Civil Twilight	0608.,1803	0608.,1804	0607.,1804
Humidity	D : 78% N : 85%	D : 60% N : 74%	D : 55% N : 70%
Barometer (mb)	1013	1015	1017
Visibility	Moderate	Moderate	Moderate
Precip Chance	20%	10%	1%
Wind (mph)	11 km/h NW	11 km/h NNW	12 km/h N

Ref: <https://weather.com/weather/5day//BGXX0002:1:BG>



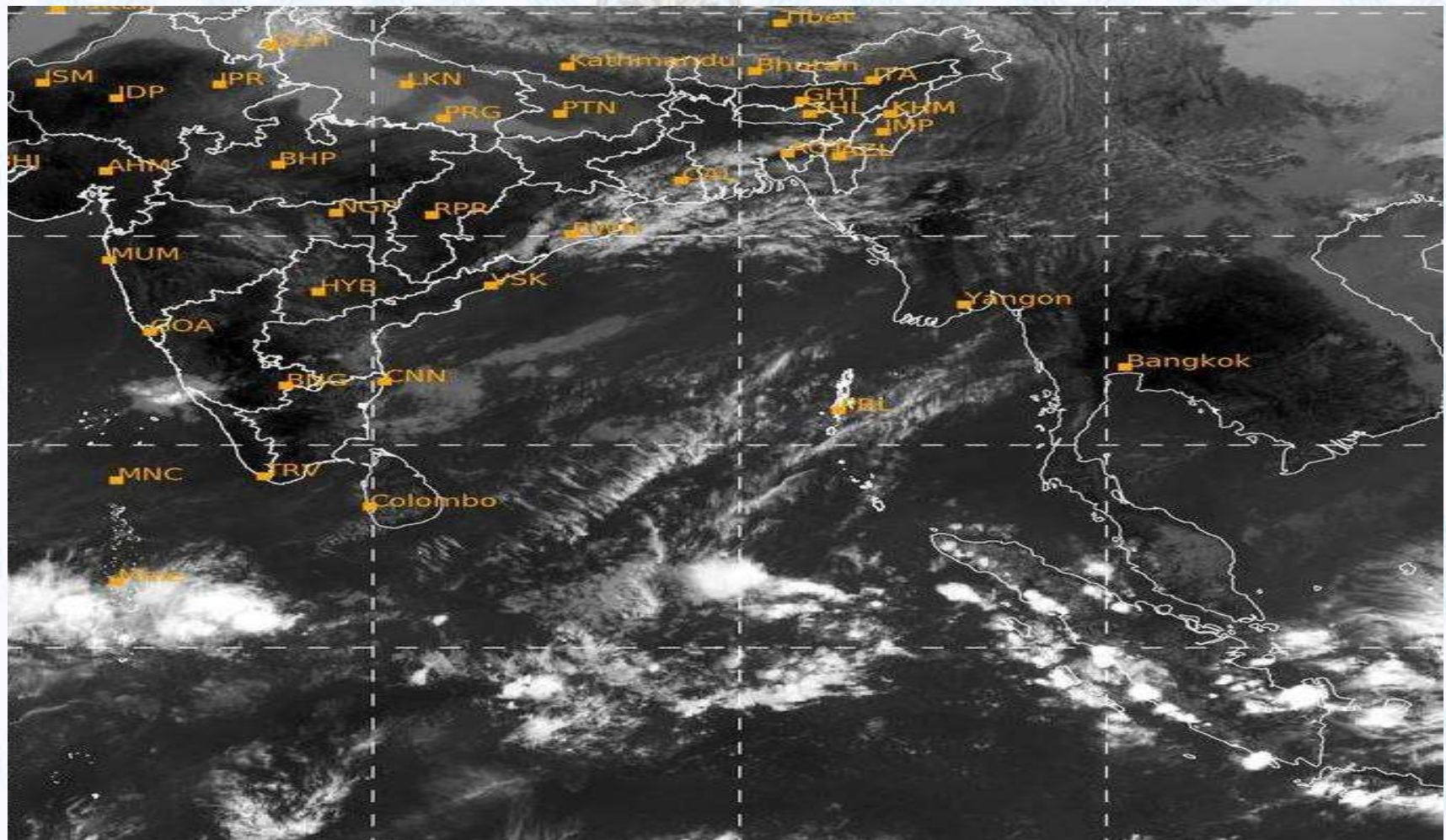
GENERAL WEATHER FORECAST – KHULNA

Description	31 Jan 2020	01 Feb 2020	02 Feb 2020
Temperature(C)	24 °C/ 11 °C	24 °C/ 13 °C	23 °C/ 11 °C
Summary	Partly Cloudy / Sunny	Partly Cloudy / Sunny	Partly Cloudy / Sunny
Sun Rise/Set	6h41m42s/17h48m42s	6h32m30s/17h43m48s	6h32m48s/17h43m12s
Day Length	11h07m00s	13h11m18s	13h10m24s
Moon Rise/Set	10:40AM 11:15PM	----- ----- -----	11:49AM 12:05AM
Moon Phase/illu	Waxing Crescent, 39%	Waxing Crescent, 1%	First Quarter, 49%
Nautical Twilight	0551, 1839	0551, 1839	0550, 1840
Civil Twilight	0618.,1812	0618.,1812	0617.,1813
Humidity	D : 70% N : 79%	D : 61% N : 76%	D : 59% N : 76%
Barometer (mb)	1013	1015	1017
Visibility	Moderate	Moderate	Moderate
Precip Chance	10%	10%	10%
Wind (mph)	11 km/h NW	10 km/h NNW	10 km/h NNW

Ref: <https://weather.com/weather/5day//BGXX0005:1:BG>



SATELLITE VIEW OF BAY OF BENGAL

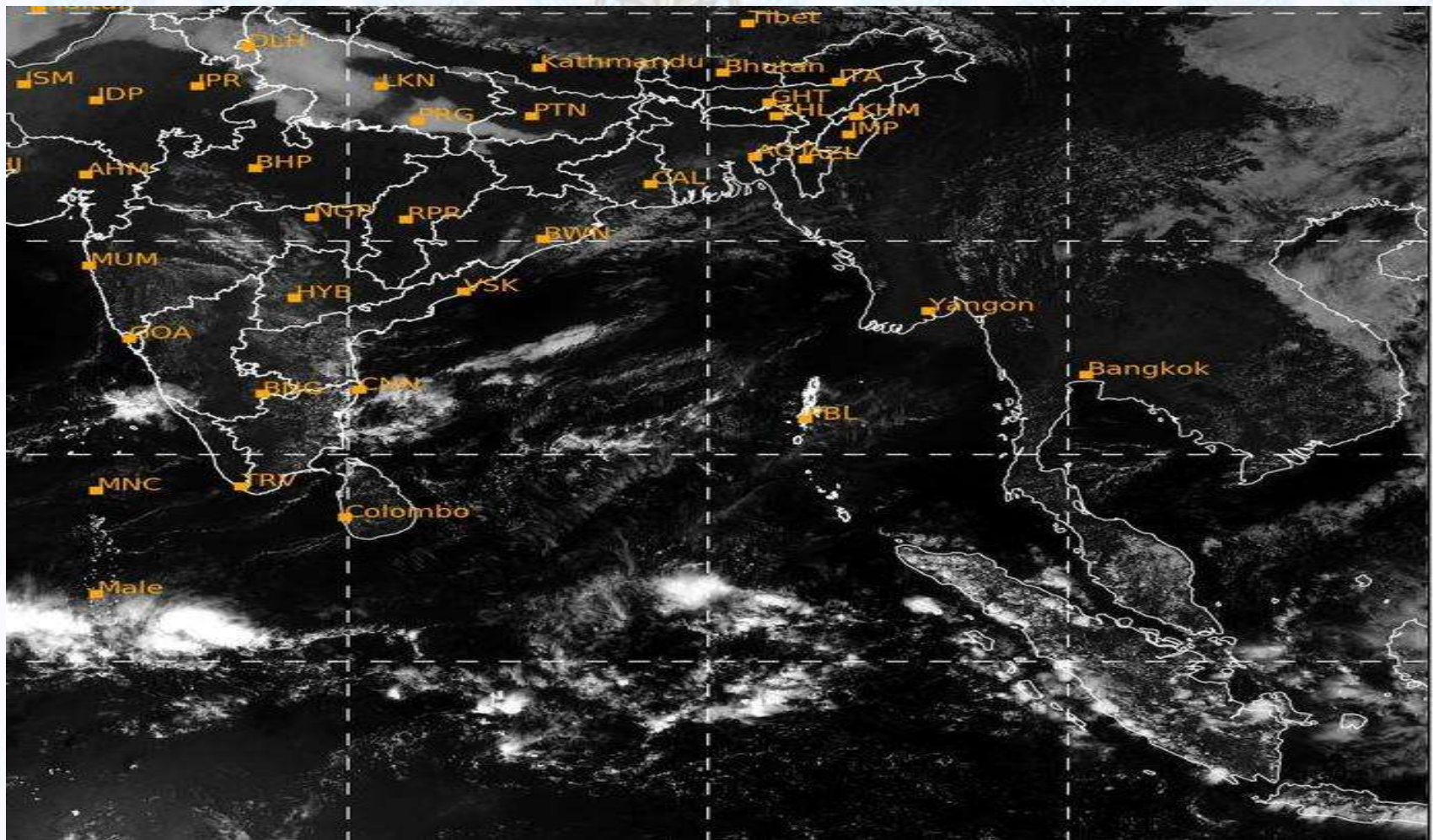


30/01/2020, 11:00 UTC MATSAT-IR

Ref: <http://satellite.imd.gov.in/insat.htm>



SATELLITE VIEW OF BAY OF BENGAL



30/01/2020, 11:00 MATSAT-VIS

Ref: <http://satellite.imd.gov.in/insat.htm>



Fleet Forecast Sea Area C-90 (Valid for 12 Hrs Commencing 1000 UTC of 30.01.2020)

Part One	NO STORM WARNING.	
Part Two	SEASONAL LOW LIES OVER SOUTH BAY.	
Part Three	Weather	TEMPORARY LIGHT RAIN/DRIZZLE IS LIKELY TO OCCUR OVER AREA C-90.
	Wind	NORTH/NORTH-EASTERLY, 08-12 KTS..
	Visibility	02-04 KMS REDUCING TO 1000 M OR LESS IN FOG.
	Outlook	FOR SUBSEQUENT 12 HOURS: LITTLE CHANGE.
	MSL Pressure	AT =30,0000 UTC. CHATTOGRAM =1013 HPA



Inland River Port Warning (VALID TILL 06 PM OF 30.01.2020)

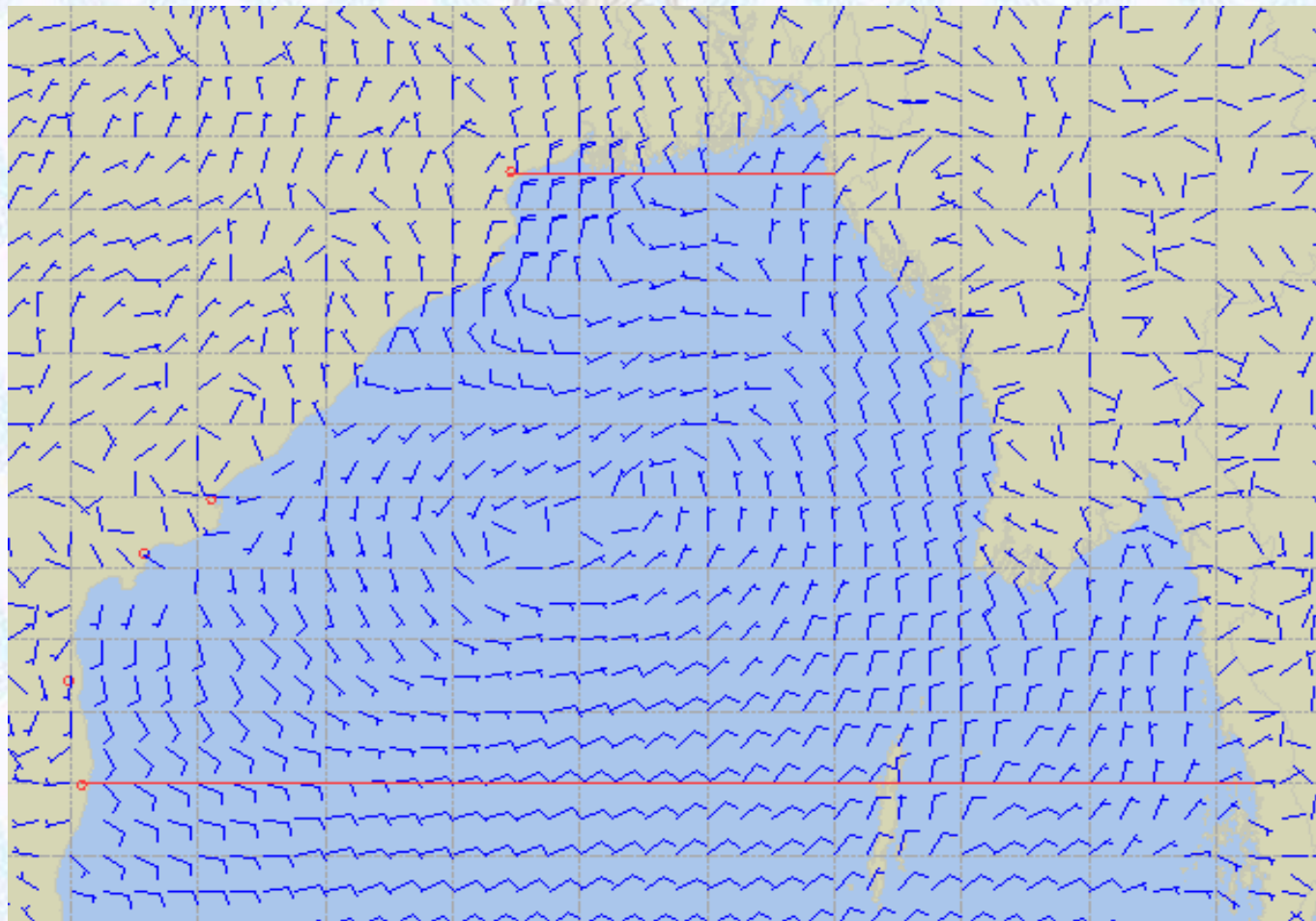
THERE IS NO INLAND RIVERPORTS WARNING & NO SIGNAL IS TO BE HOISTED.



Ref: <http://www.bmd.gov.bd/?/home>



Surface Wind Forecast-31 Jan- 2020



Legend:



Calm
Winds



5 Knots



10 Knots



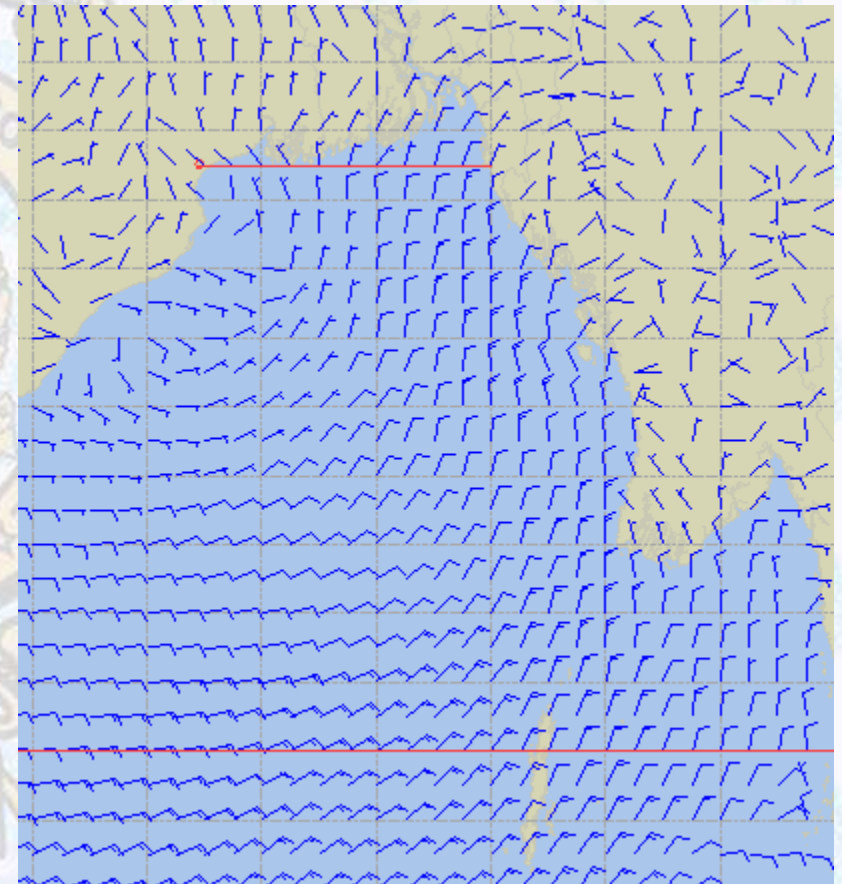
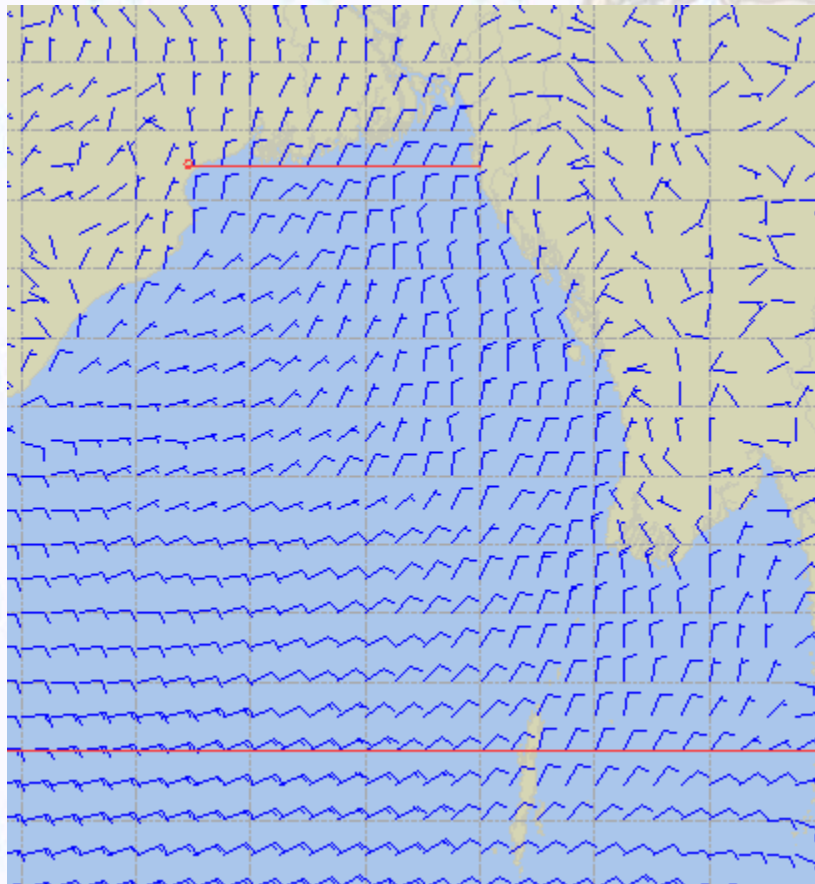
60 Knots



Surface Wind Forecast – 01 & 02 Feb - 2020

01 Feb 2020 Saturday

02 Feb 2020 Sunday



Legend:



**Calm
Winds**



5 Knots



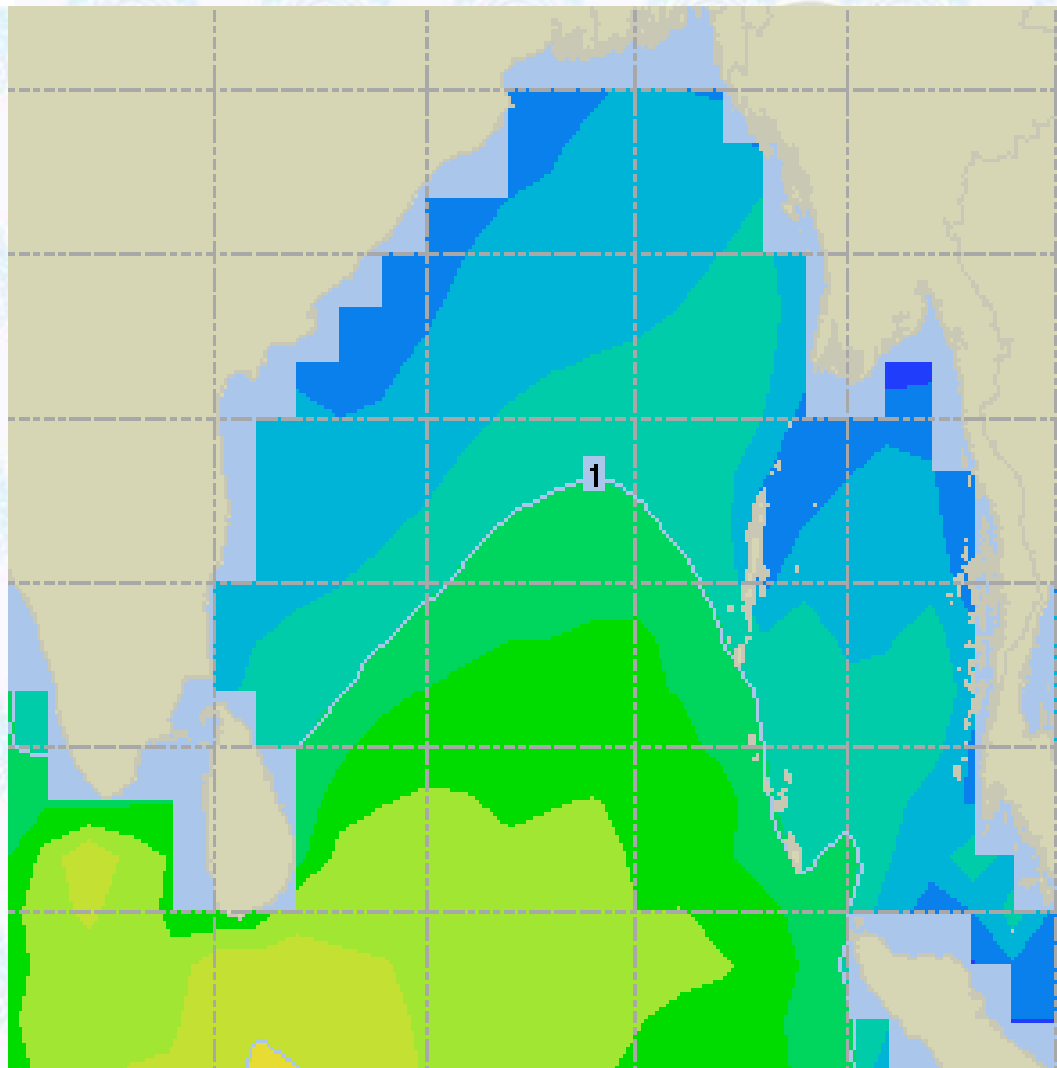
10 Knots



60 Knots



Sea State Forecast- 31 Jan - 2020



Sea State	Ht (m)
0	0-0.1
1	0-0.1
2	0.1-0.5
3	0.5-1.25
4	1.25-2.5
5	2.5-4.0
6	4-6
7	6-9
8	9-14
9	Over 14

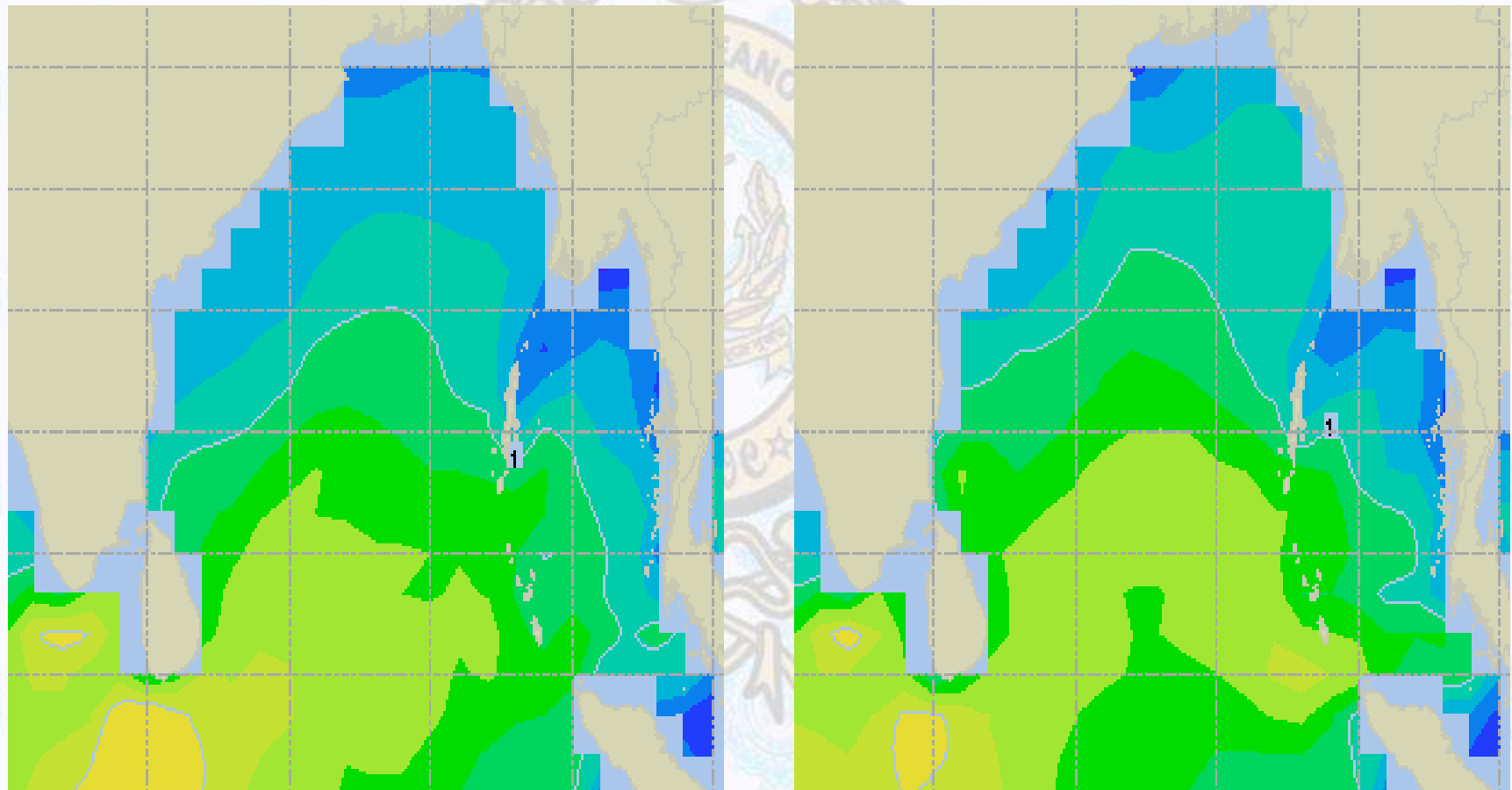




Surface Wind Forecast – 01 & 02 Feb - 2020

01 Feb 2020 Saturday

02 Feb 2020 Sunday

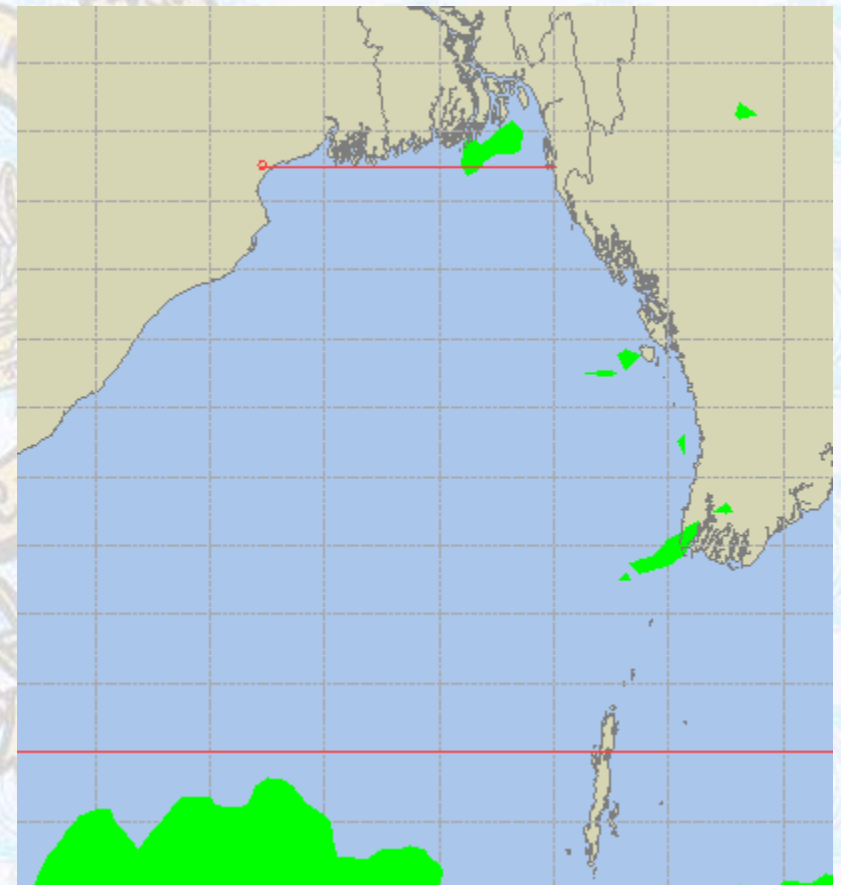
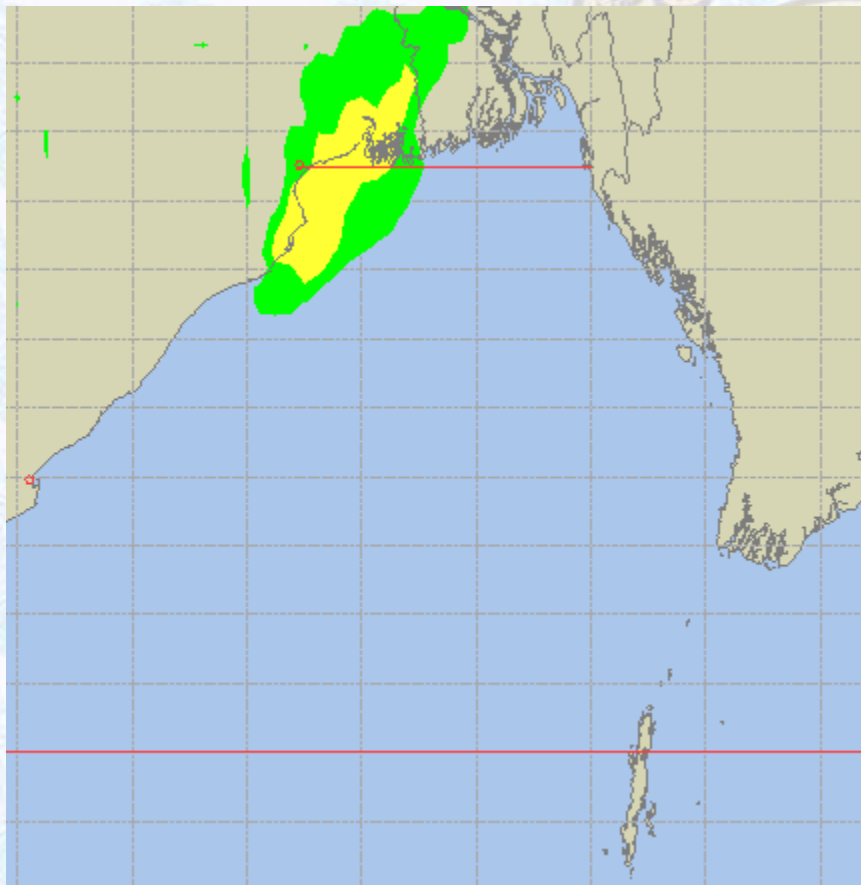




Peak Gusting Possibilities – 31 Jan & 01 Feb - 2020

31 Jan 2020 Friday

01 Feb 2020 Saturday

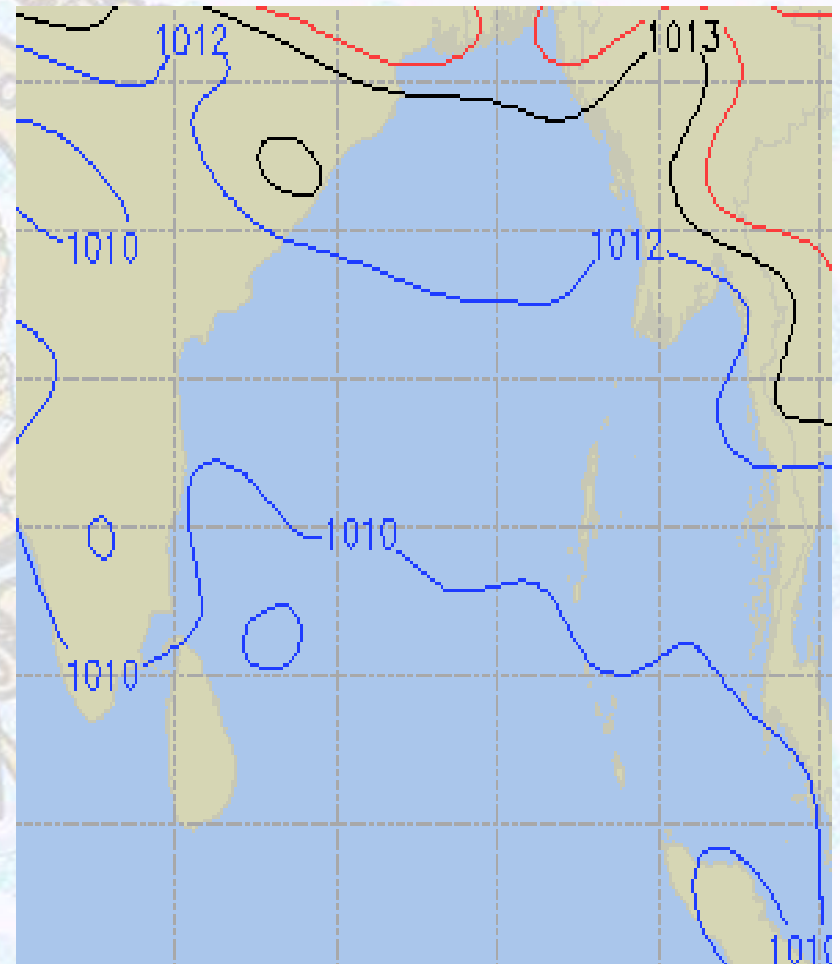
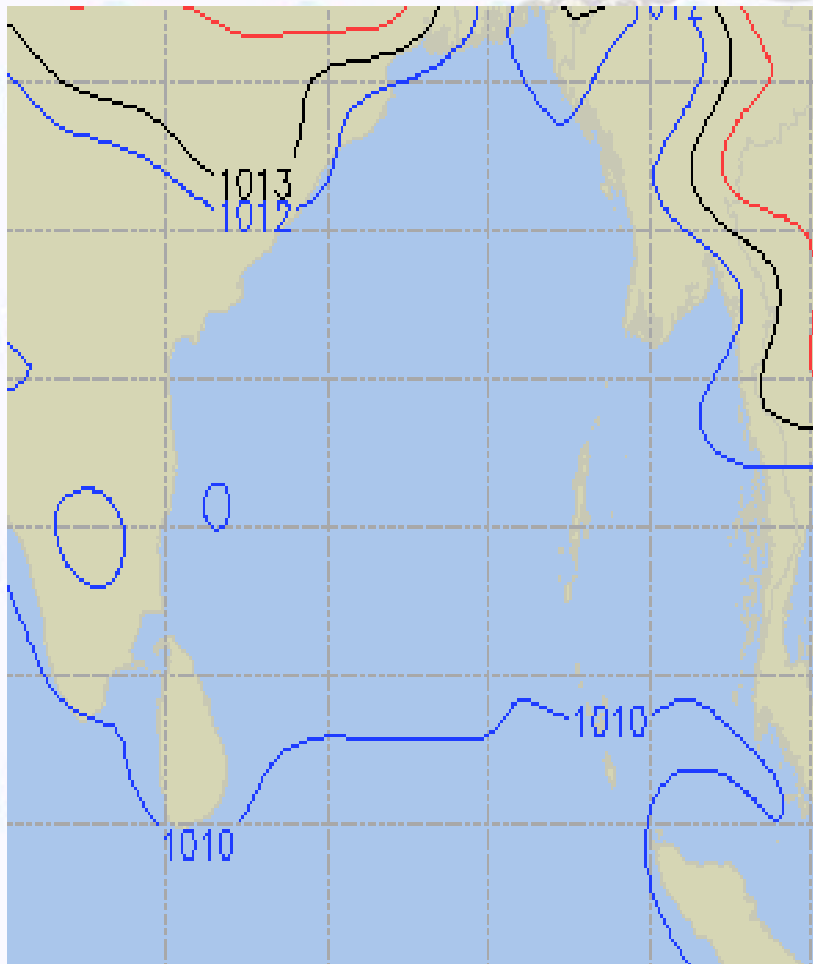




Surface Pressure forecast – 31 Jan & 01 Feb - 2020

31 Jan 2020 Friday

01 Feb 2020 Saturday

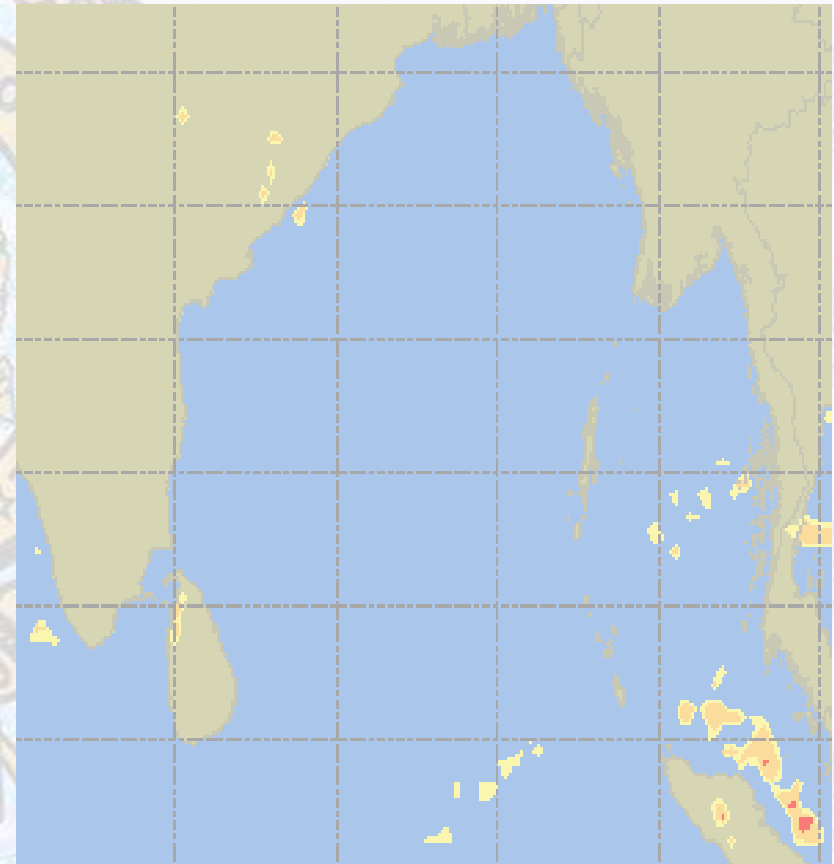
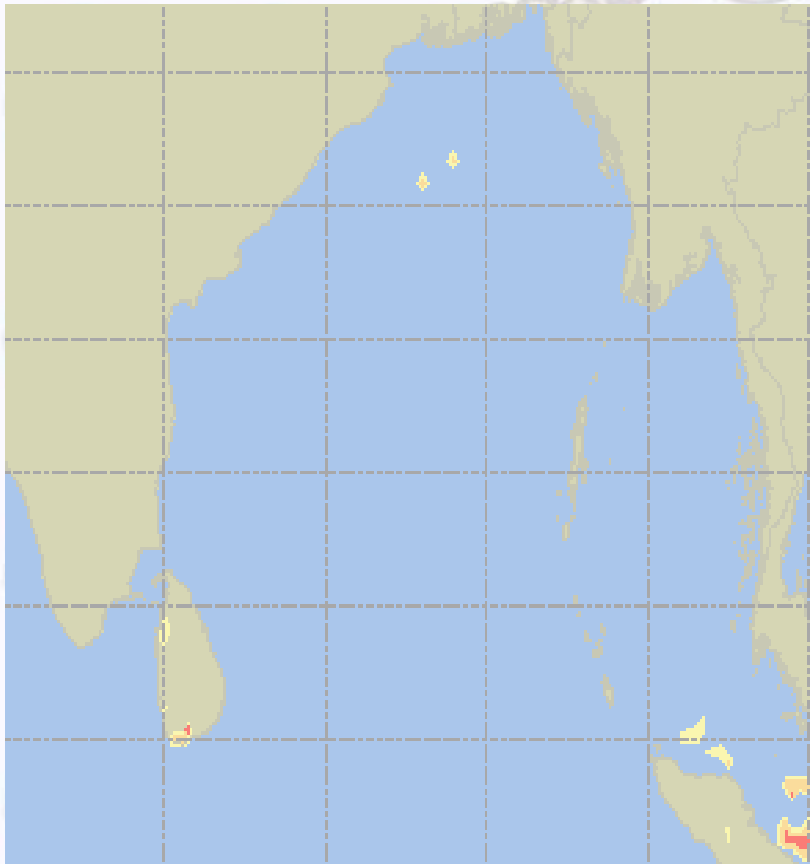




Visibility at Sea Forecast – 31 Jan & 01 Feb - 2020

31 Jan 2020 Friday

01 Feb 2020 Saturday



Visibility Scale:

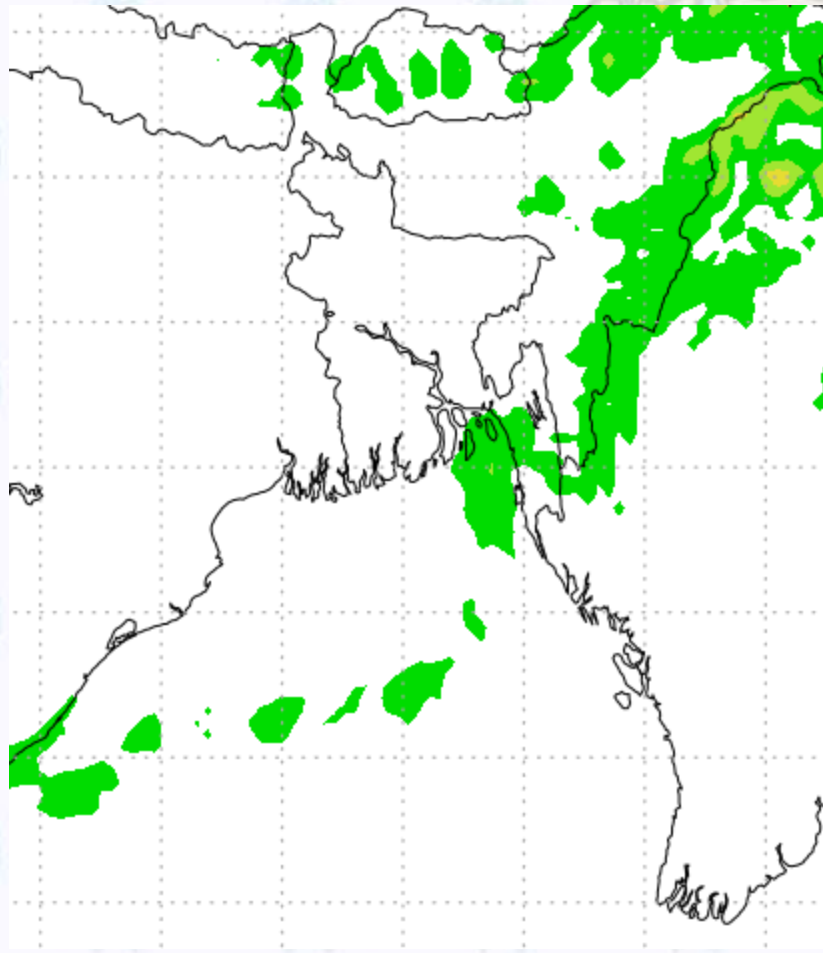


Ref (Slide 12-18): <http://www.weatheronline.co.uk/marine/weather?LEVEL>

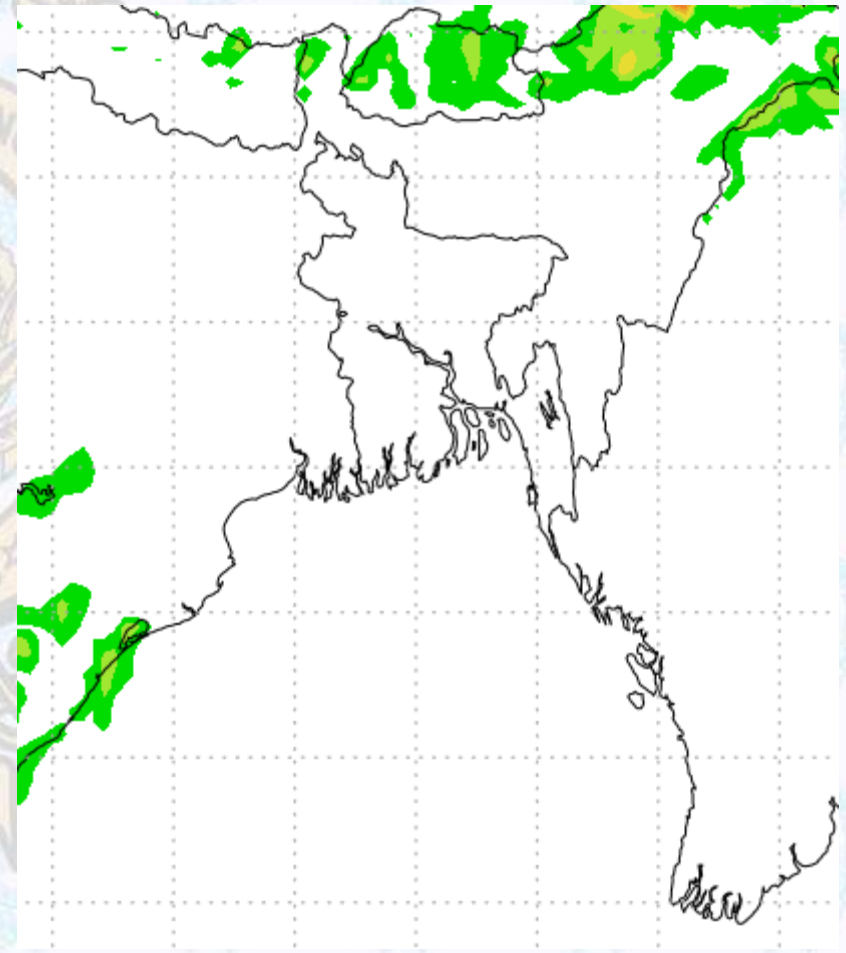


Precipitation

Rain(mm) 31 Jan & 01 Feb 20



Rain(mm) 01 & 02 Feb 20



Precipitation Scale (mm):





Tidal Information

KHAL NO. 10

COX'S BAZAR

HIRAN POINT

	Time	Height		Time	Height		Time	Height
31Jan 2020	0422	3.92		0214	2.82		0157	2.54
	1052	0.50		0837	0.57		0819	0.67
	1654	3.72		1434	2.53		1430	2.39
	2309	0.86		2054	0.65		2032	0.94
01Feb 2020	Time	Height		Time	Height		Time	Height
	0505	3.65		0253	2.60		0232	2.39
	1130	0.64		0913	0.67		0854	0.77
	1742	3.58		1519	2.41		1512	2.31
	2358	1.04		2140	0.78		2117	1.09
02Feb 2020	Time	Height		Time	Height		Time	Height
	0557	3.36		0339	2.39		0314	2.22
	1218	0.83		1000	0.78		0937	0.89
	1840	3.46		1616	2.31		1606	2.22
	-			2239	0.91		2216	1.23