



# **WEATHER FORECAST FOR BN**

***29 JAN - 01 FEB 2020***





# WEATHERFORECAST – DHAKA

## 29.01.2020

Hourly	2 PM	4 PM	8 PM	11 PM
Temp. / Dew Point	24 / 17	24 / 16	20 / 16	19 / 16
Wind	8 km/h SE	8 km/h SE	5 km/h SE	4 km/h S
Humidity	65%	62%	77%	82%
Chance of Precip	1%	1%	6%	9%
Cloud Cover	59%	36%	25%	43%
Conditions	Partly Cloudy	Partly Cloudy	Partly Cloudy	Partly Cloudy
Sunrise Sunset	6: 41 AM 5: 43 PM			

### Conditions

Pressure : 1014 hpa

Visibility : 1.95 km

Ref: <https://www.wunderground.com/weather/bd/dhaka>



# WEATHER FORECAST – CHATTOGRAM

## 29.01.2020

Hourly	2 PM	4 PM	8 PM	11 PM
Temp. / Dew Point	22 / 14	22 / 14	21 / 15	19 / 16
Wind	9 km/h NNE	10 km/h NNE	5 km/h N	3 km/h N
Humidity	64%	63%	71%	81%
Chance of Precip.	1%	1%	2%	4%
Cloud Cover	96%	92%	41%	19%
Conditions	Partly Cloudy	Partly Cloudy	Partly Cloudy	Partly Cloudy
Sunrise Sunset	6: 34 AM 5: 39 PM			

### Conditions

Pressure : 1015 hpa

Visibility : 1.93 Km

Ref: <https://www.wunderground.com/weather/bd/chittagong>



# WEATHER FORECAST – KHULNA

## 29.01.2020

Hourly	2 PM	4 PM	8 PM	11 PM
Temp. / Dew Point	22 / 19	22 / 19	19 / 18	19 / 18
Wind	10 km/h SE	11 km/h SE	6 km/h SSE	3 km/h S
Humidity	85%	83%	93%	96%
Chance of Precip.	1%	21%	19%	15%
Cloud Cover	69%	61%	52%	33%
Conditions	Partly Cloudy	Partly Cloudy	Partly Cloudy	Partly Cloudy
Sunrise Sunset	6: 44 AM 5: 49 PM			

### Conditions

Pressure : 1014 hpa

Visibility : 1.69 Km

Ref: <https://www.wunderground.com/weather/bd/khulna>



# GENERAL WEATHER FORECAST – DHAKA

Description	30 Jan 2020	31 Jan 2020	01 Feb 2020
<b>Temperature (C)</b>	24°C/ 17°C	24°C/ 13°C	24°C/ 13°C
<b>Summary</b>	Mostly Cloudy / Sunny	Mostly Cloudy / Sunny	Mostly Cloudy / Sunny
<b>Sun Rise/Set</b>	6h40m12s/17h43m06s	6h39m48s/17h43m48s	6h39m30s/17h44m30s
<b>Day Length</b>	11h02m54s	11h04m00s	11h05m00s
<b>Moon Rise/ Set</b>	10:04AM 10:21PM	10:36AM 11:11PM	-----  -----  -----
<b>Moon Phase/ illu</b>	Waxing Crescent, 30%	Waxing Crescent, 39%	Waxing Crescent, 1%
<b>NauticalTwilight</b>	0549,1834	0549,1834	0548,1835
<b>Civil Twilight</b>	0616,1806	0616,1807	0615,1808
<b>Humidity</b>	D : 81% N : 88%	D : 70% N : 75%	D : 59% N : 74%
<b>Barometer (mb)</b>	1014	1013	1015
<b>Visibility</b>	Moderate	Moderate	Moderate
<b>Precip Chance</b>	40%	10%	10%
<b>Wind (mph)</b>	7 Km/h SSE	11 Km/h WNW	811 Km/h NW

Ref: <https://weather.com/weather/5day//BGXX0003:1:BG>



# GENERAL WEATHER FORECAST– CHATTOGRAM

Description	30 Jan 2020	31 Jan 2020	01 Feb 2020
<b>Temperature (C)</b>	25°C/ 16°C	24°C/ 14°C	25°C/ 14°C
<b>Summary</b>	Mostly Cloudy / Sunny	Mostly Cloudy / Sunny	Mostly Cloudy / Sunny
<b>Sun Rise/Set</b>	6h32m06s/17h39m42s	6h31m42s/17h40m18s	6h31m30s/17h40m54s
<b>Day Length</b>	11h07m36s	11h08m36s	11h09m24s
<b>Moon Rise/ Set</b>	9:58AM 10:15PM	10:30AM 11:05PM	11:04AM 11:55PM
<b>Moon Phase/ illu</b>	Waxing Crescent, 30%	Waxing Crescent, 39%	Waxing Crescent, 49%
<b>NauticalTwilight</b>	0541, 1830	0541, 1830	0541, 1831
<b>Civil Twilight</b>	0608.,1803	0608.,1803	0608.,1804
<b>Humidity</b>	D : 70% N : 88%	D : 72% N : 80%	D : 56% N : 72%
<b>Barometer (mb)</b>	1015	1013	1015
<b>Visibility</b>	Moderate	Moderate	Moderate
<b>Precip Chance</b>	10%	10%	10%
<b>Wind (mph)</b>	10 km/h NNW	11 km/h NNW	12 km/h NNW

Ref: <https://weather.com/weather/5day//BGXX0002:1:BG>



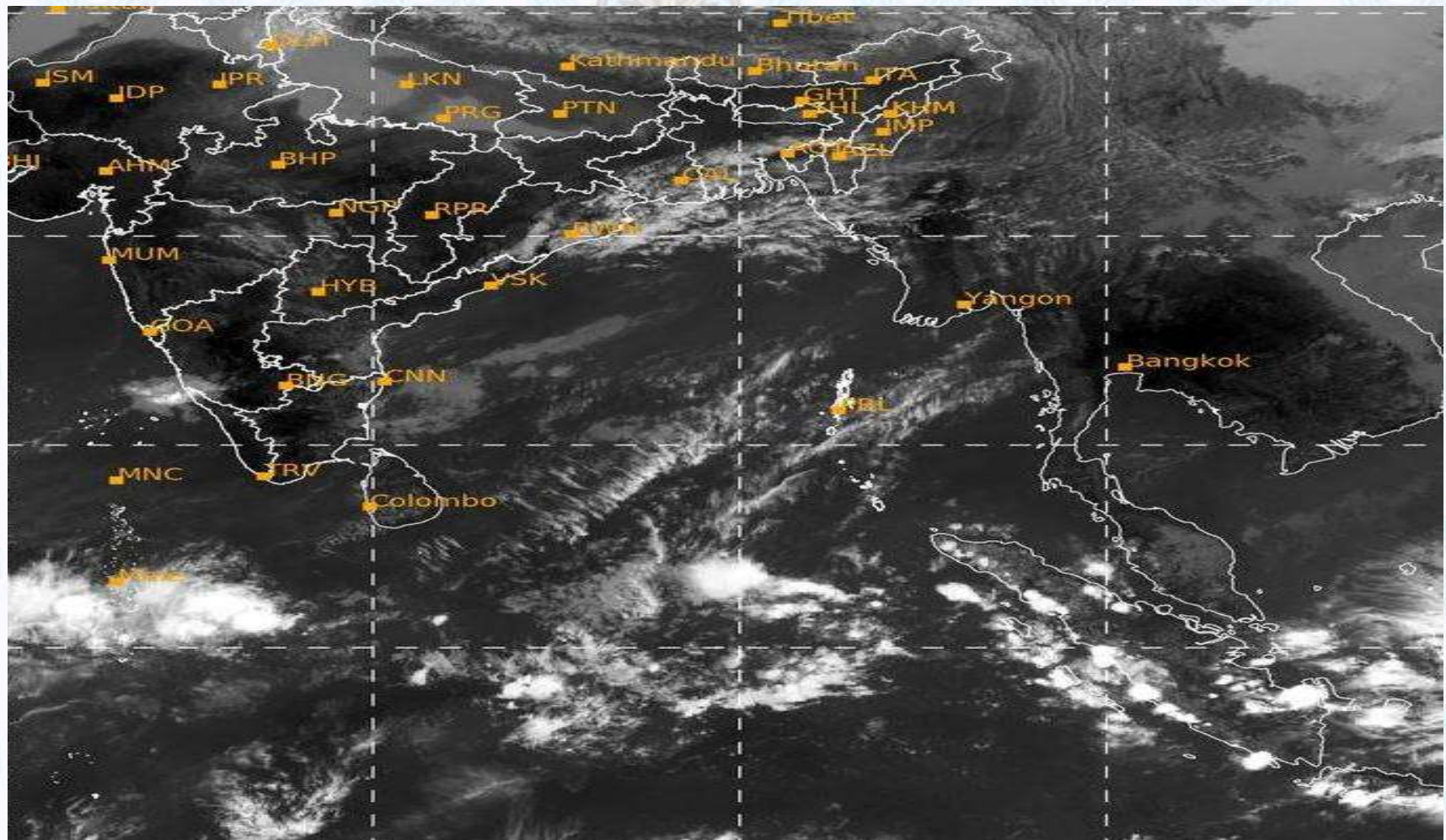
# GENERAL WEATHER FORECAST – KHULNA

Description	30 Jan 2020	31 Jan 2020	01 Feb 2020
<b>Temperature(C)</b>	23°C/ 15°C	23°C/ 12°C	24°C/ 13°C
<b>Summary</b>	Light Rain/Mostly Cloudy	Light Rain/Mostly Cloudy	Light Rain/Mostly Cloudy
<b>Sun Rise/Set</b>	6h42m00s/17h48m06s	6h41m42s/17h48m42s	6h32m30s/17h43m48s
<b>Day Length</b>	11h06m06s	11h07m00s	13h11m18s
<b>Moon Rise/Set</b>	10:08AM 10:26PM	10:40AM 11:15PM	-----  -----  -----
<b>Moon Phase/illu</b>	Waxing Crescent, 30%	Waxing Crescent, 39%	Waxing Crescent, 1%
<b>Nautical Twilight</b>	0551, 1838	0551, 1839	0551, 1839
<b>Civil Twilight</b>	0618.,1811	0618.,1812	0618.,1812
<b>Humidity</b>	D : 89% N : 90%	D : 67% N : 77%	D : 61% N : 974%
<b>Barometer (mb)</b>	1015	1013	1015
<b>Visibility</b>	Moderate	Moderate	Moderate
<b>Precip Chance</b>	50%	10%	10%
<b>Wind (mph)</b>	8 km/h NNW	11 km/h NW	10 km/h NNW

Ref: <https://weather.com/weather/5day//BGXX0005:1:BG>



# SATELLITE VIEW OF BAY OF BENGAL



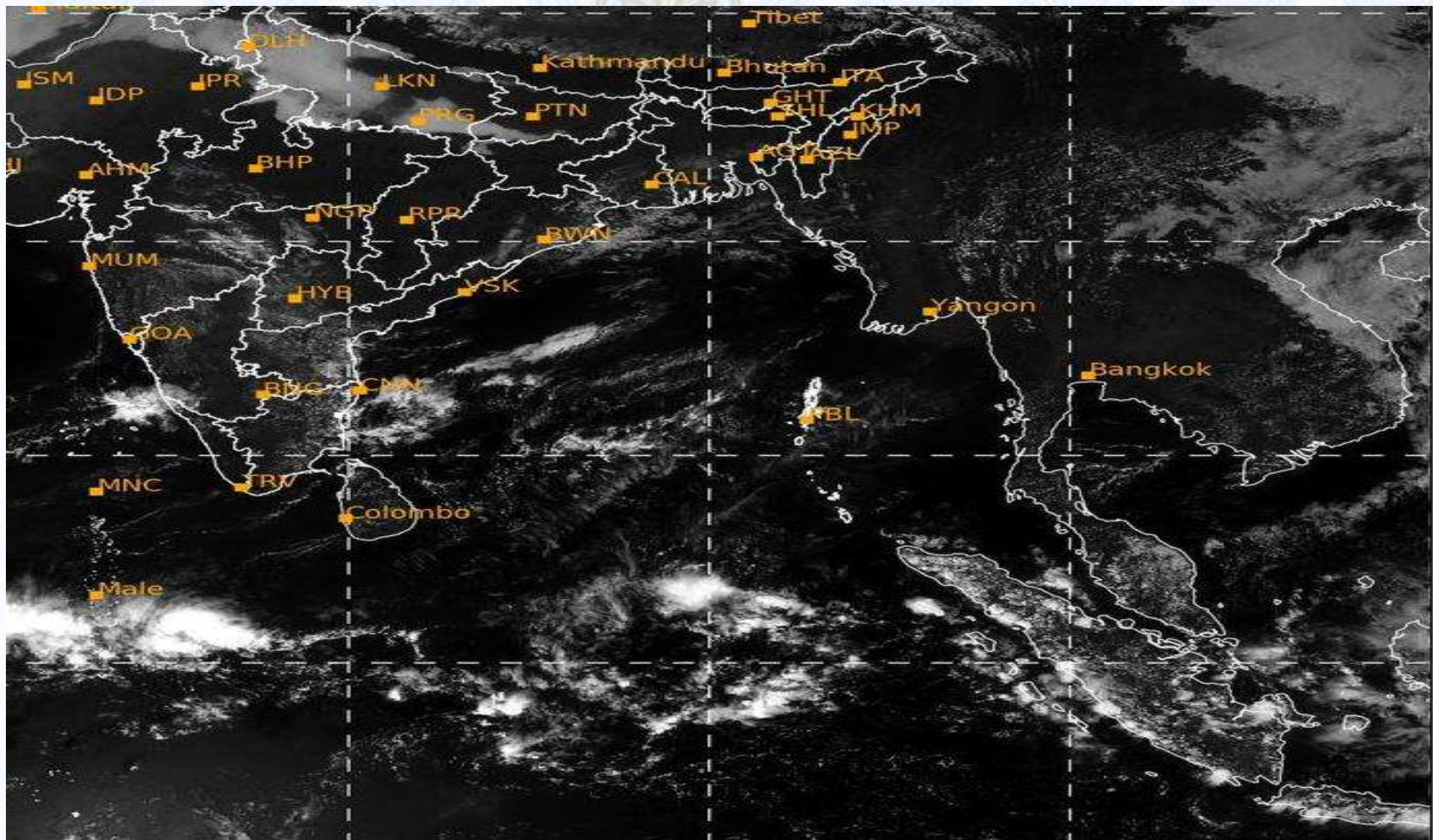
29/01/2020, 11:00 UTC MATSAT-IR

Ref: <http://satellite.imd.gov.in/insat.htm>





# SATELLITE VIEW OF BAY OF BENGAL



29/01/2020, 11:00 MATSAT-VIS

Ref: <http://satellite.imd.gov.in/insat.htm>



# Fleet Forecast Sea Area C-90 ( Valid for 12 Hrs Commencing 1000 UTC of 29.01.2020)

<b>Part One</b>	NO STORM WARNING.	
<b>Part Two</b>	SEASONAL LOW LIES OVER SOUTH BAY.	
<b>Part Three</b>	Weather	PARTLY CLOUDY OVER AREA C-90.
	Wind	N/NW'LY, 08-12 KTS.
	Visibility	02-04 KMS REDUCING TO 1000 M OR LESS IN FOG.
	Outlook	FOR SUBSEQUENT 12 HOURS: LITTLE CHANGE.
	MSL Pressure	AT =29,0000 UTC. CHATTOGRAM =1015 HPA



# Inland River Port Warning (VALID TILL 06 PM OF 29.01.2020)

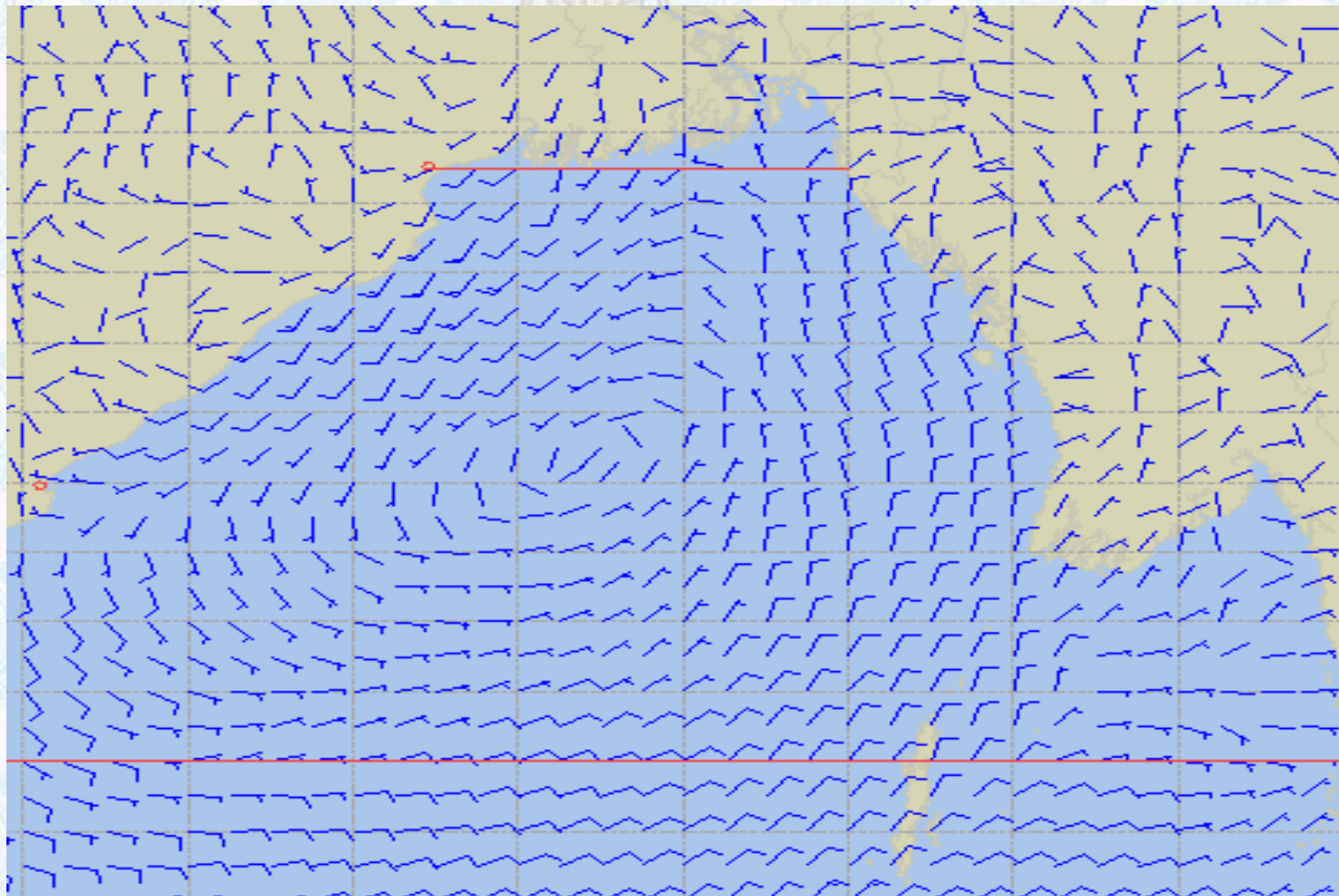
THERE IS NO INLAND RIVERPORTS WARNING & NO SIGNAL IS TO BE HOISTED.



Ref: <http://www.bmd.gov.bd/?/home>



# Surface Wind Forecast- 30 Jan- 2020



**Legend:**



**Calm  
Winds**



**5 Knots**



**10 Knots**



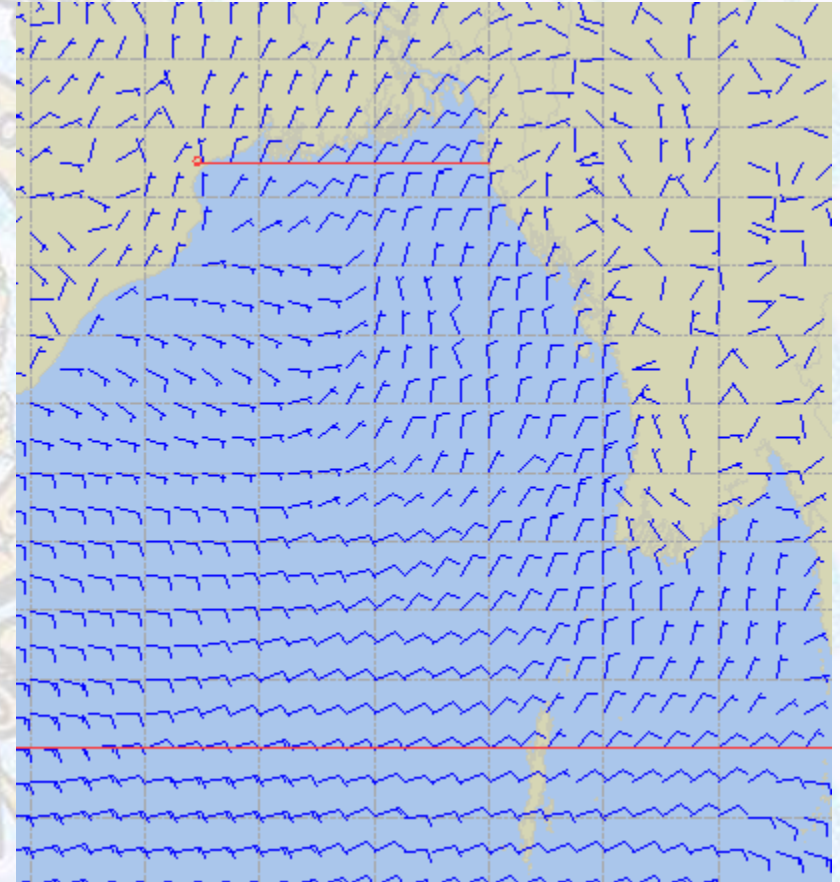
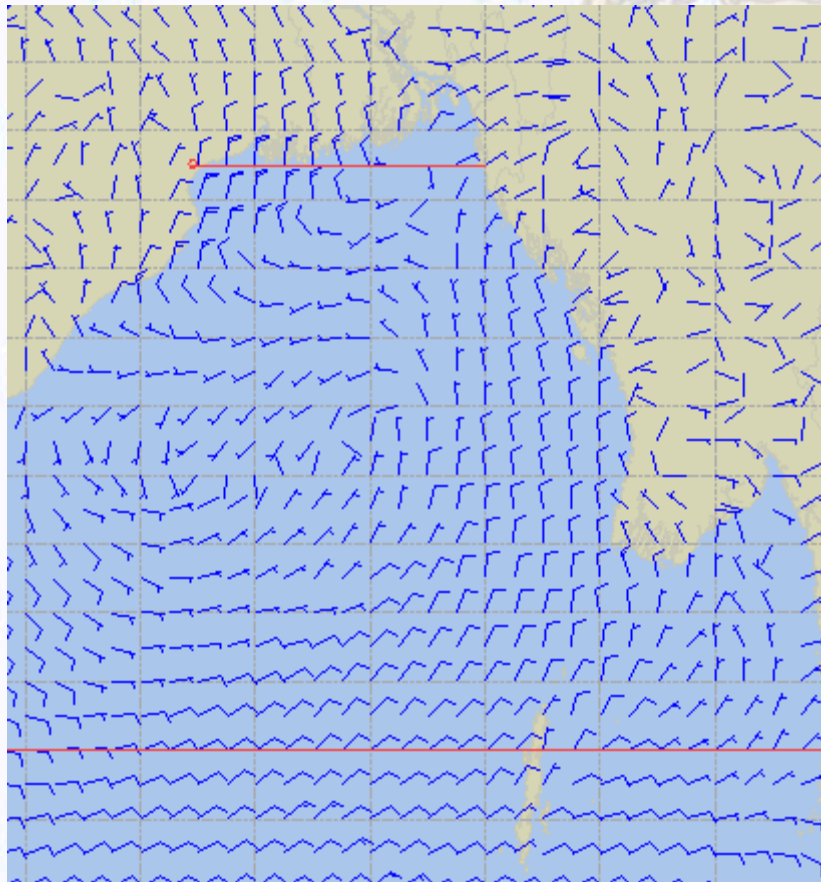
**60 Knots**



# Surface Wind Forecast – 31 Jan & 01 Feb - 2020

31 Jan 2020 Friday

01 Feb 2020 Saturday



**Legend:**



**Calm  
Winds**



**5 Knots**



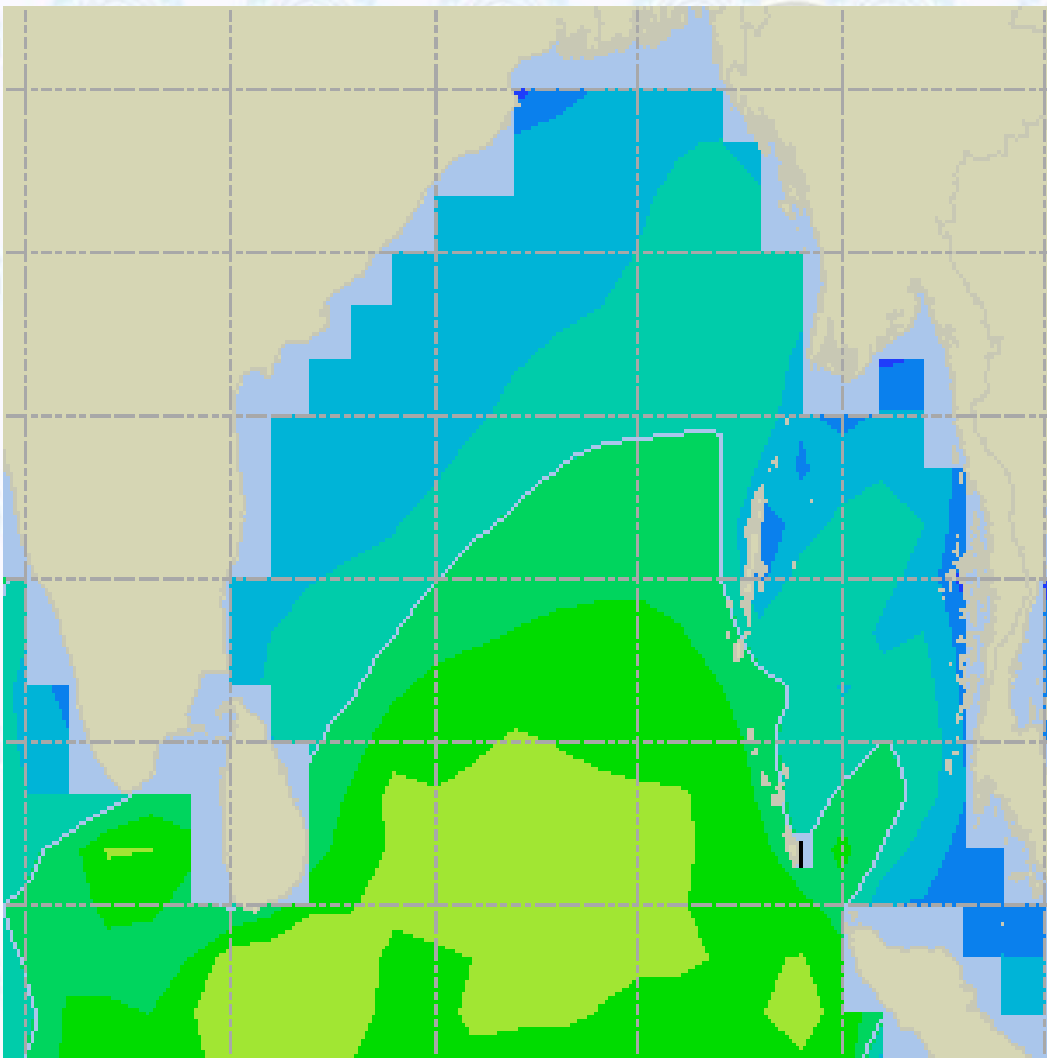
**10 Knots**



**60 Knots**



# Sea State Forecast- 30 Jan - 2020



Sea State	Ht (m)
0	0-0.1
1	0-0.1
2	0.1-0.5
3	0.5-1.25
4	1.25-2.5
5	2.5-4.0
6	4-6
7	6-9
8	9-14
9	Over 14

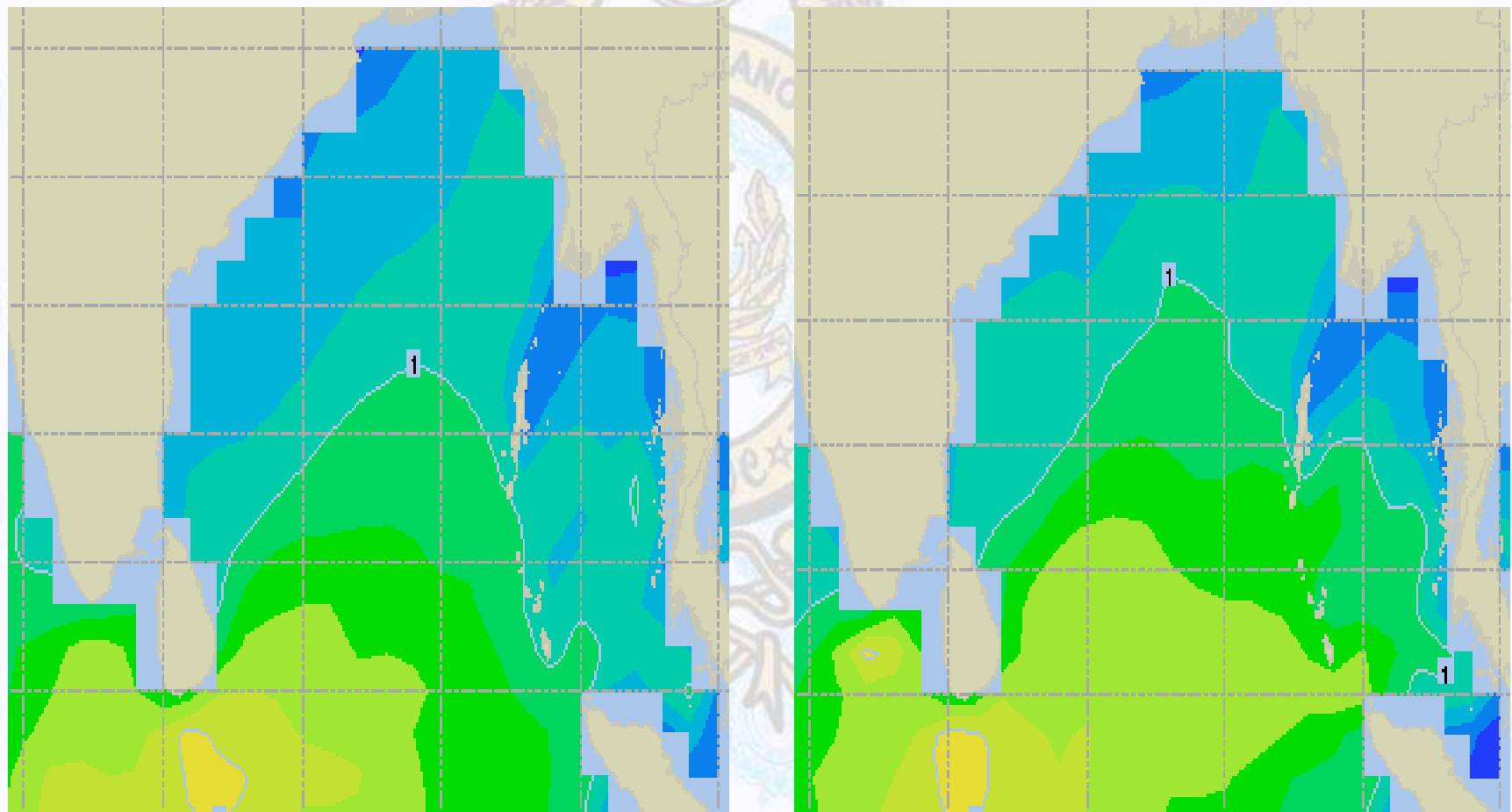




# Surface Wind Forecast – 31 Jan & 01 Feb - 2020

31 Jan 2020 Friday

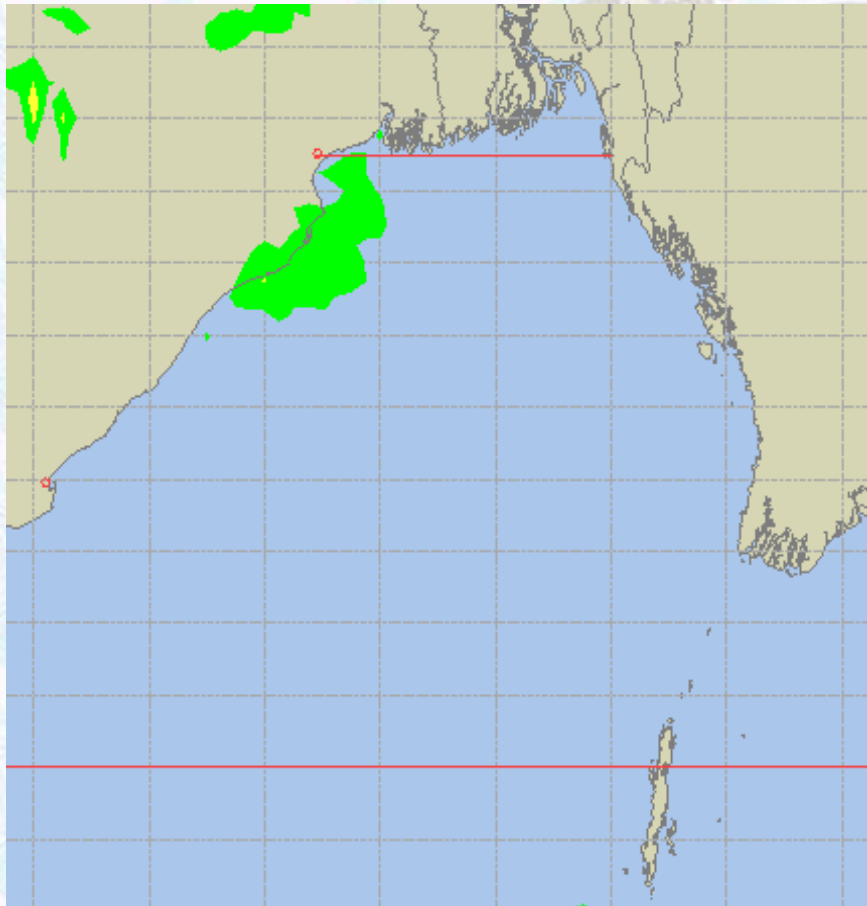
01 Feb 2020 Saturday



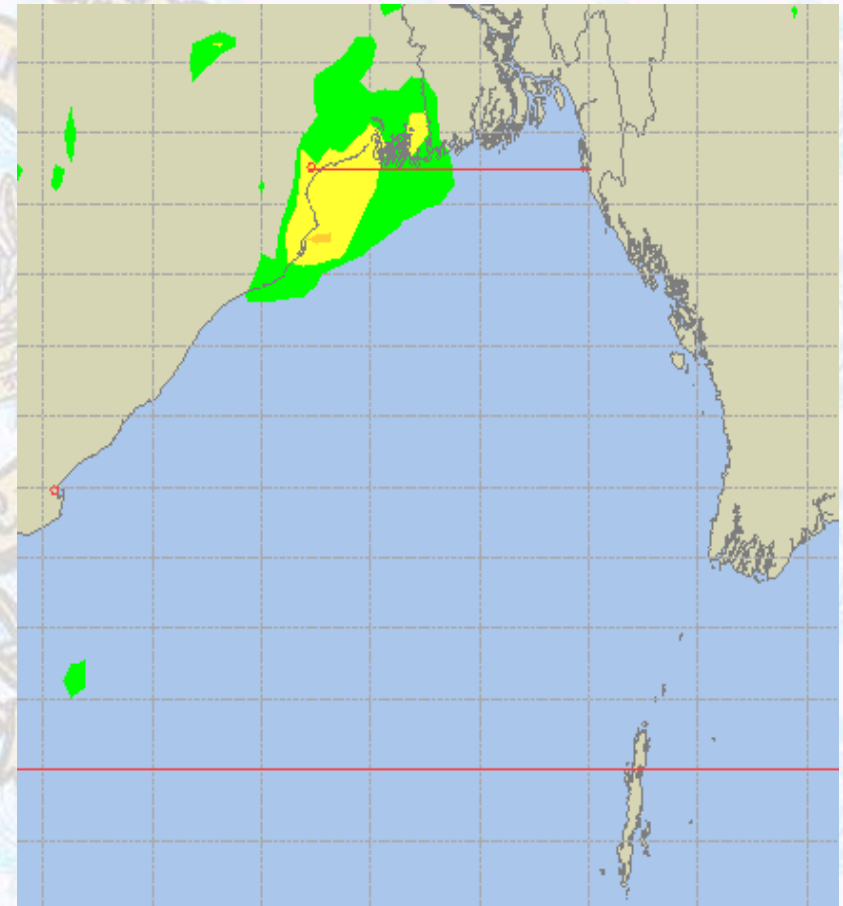


# Peak Gusting Possibilities – 30 & 31 Jan - 2020

30 Jan 2020 Thursday



31 Jan 2020 Friday

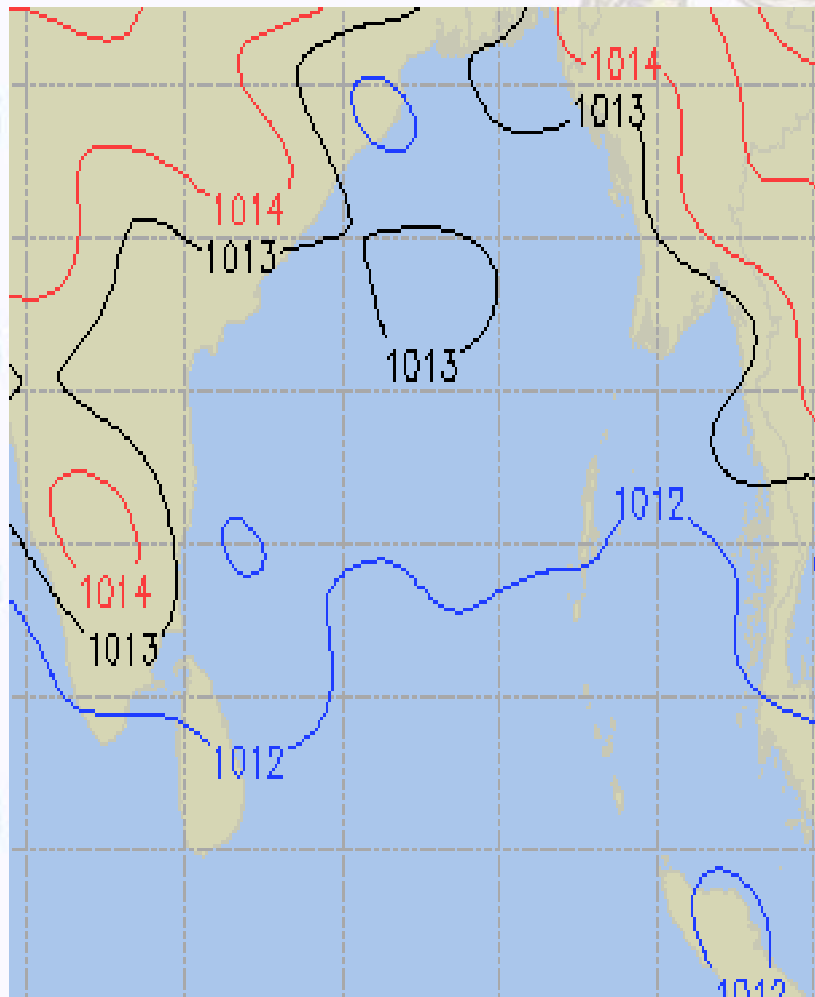




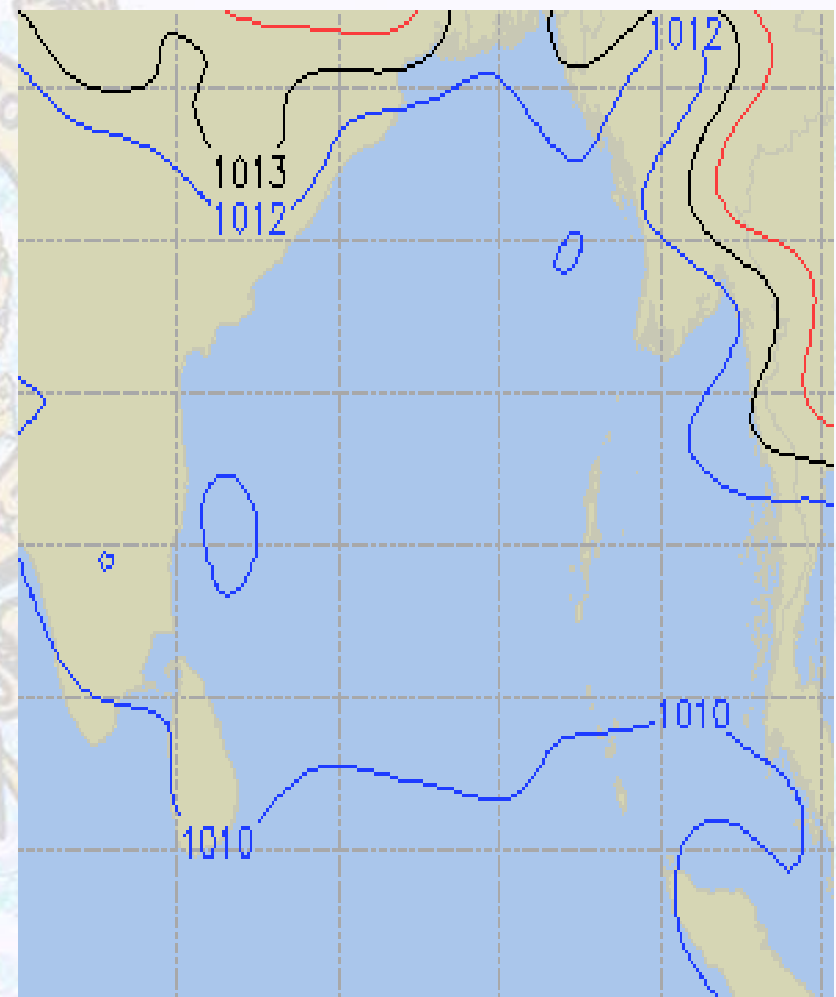


# Surface Pressure forecast – 30 & 31 Jan - 2020

30 Jan 2020 Thursday



31 Jan 2020 Friday

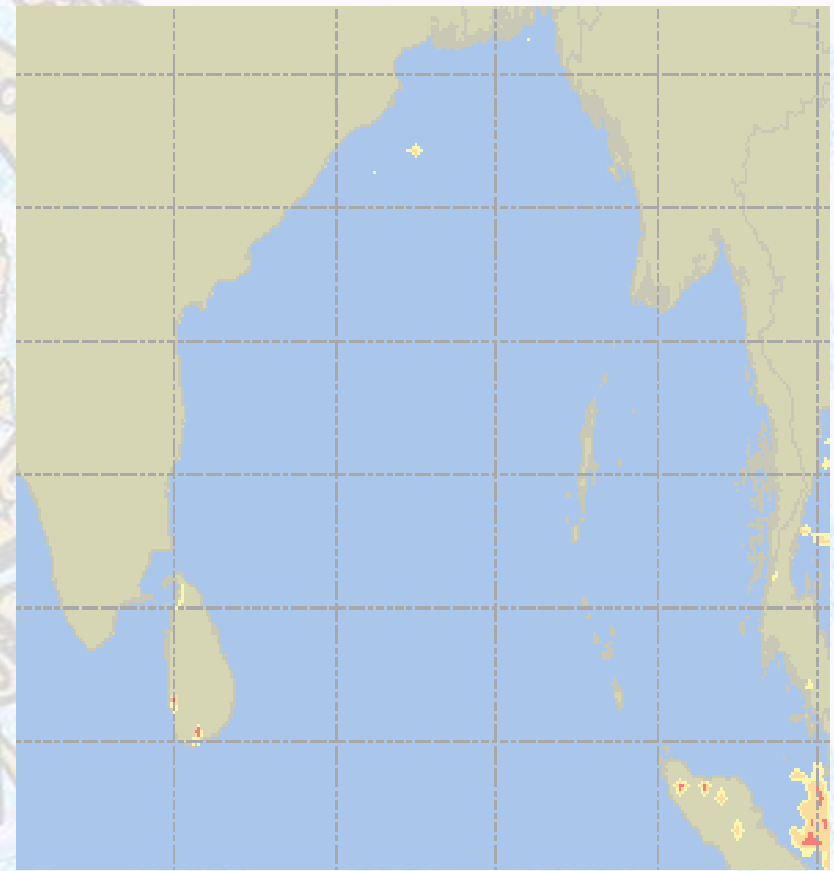
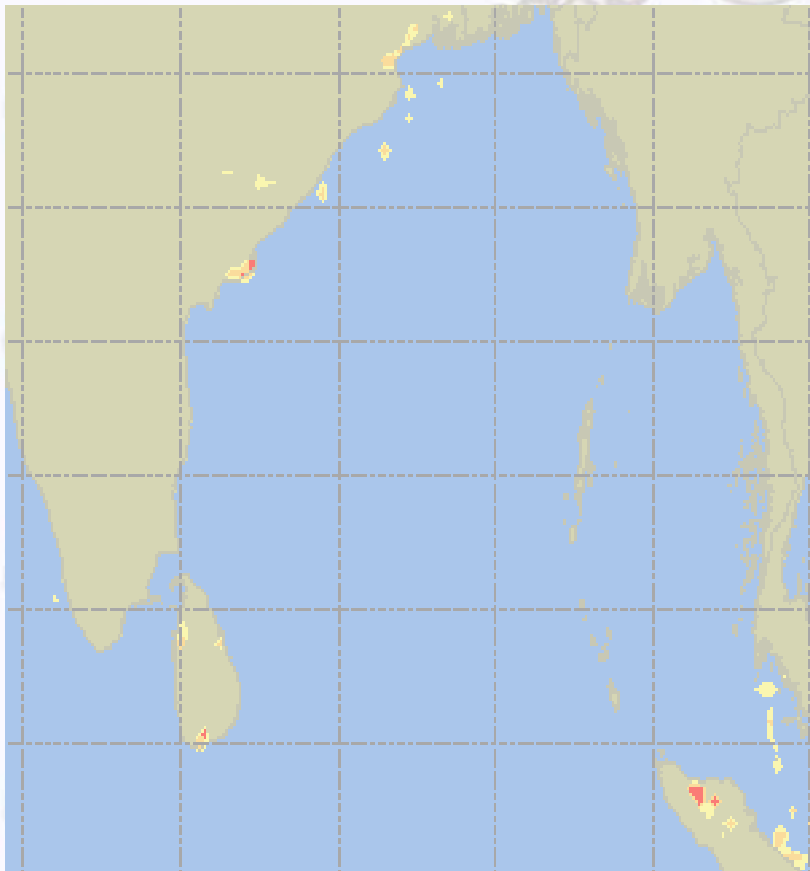




# Visibility at Sea Forecast – 30 & 31 Jan - 2020

30 Jan 2020 Thursday

31 Jan 2020 Friday



**Visibility Scale:**

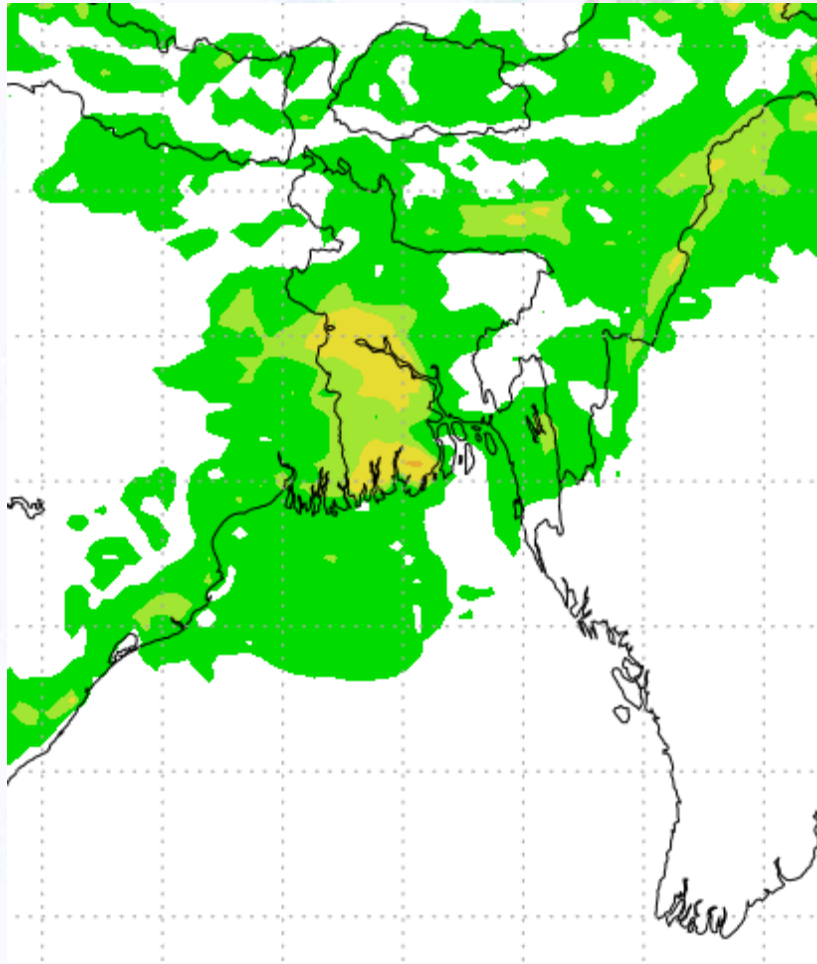


Ref (Slide 12-18): <http://www.weatheronline.co.uk/marine/weather?LEVEL>

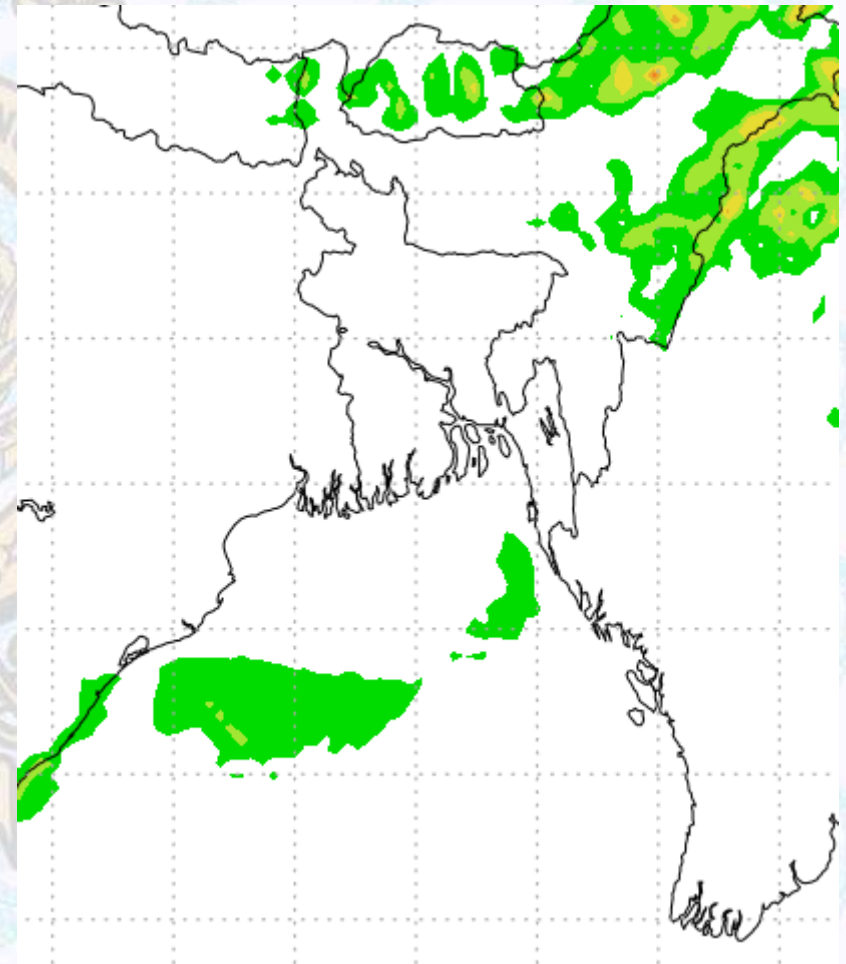


# Precipitation

Rain(mm) 30 & 31 Jan 20



Rain(mm) 31 Jan & 01 Feb 20



Precipitation Scale (mm):





# Tidal Information

## KHAL NO. 10

## COX'S BAZAR

## HIRAN POINT

	Time	Height		Time	Height		Time	Height
<b>30Jan 2020</b>	0344	4.13		0139	3.01		0125	2.66
	1020	0.43		0805	0.49		0750	0.61
	1614	3.84		1356	2.66		1353	2.46
	2229	0.71		2017	0.54		1956	0.81
<b>31Jan 2020</b>	<b>Time</b>	<b>Height</b>		<b>Time</b>	<b>Height</b>		<b>Time</b>	<b>Height</b>
	0422	3.92		0214	2.82		0157	2.54
	1052	0.50		0837	0.57		0819	0.67
	1654	3.72		1434	2.53		1430	2.39
	2309	0.86		2054	0.65		2032	0.94
<b>01Feb 2020</b>	<b>Time</b>	<b>Height</b>		<b>Time</b>	<b>Height</b>		<b>Time</b>	<b>Height</b>
	0505	3.65		0253	2.60		0232	2.39
	1130	0.64		0913	0.67		0854	0.77
	1742	3.58		1519	2.41		1512	2.31
	2358	1.04		2140	0.78		2117	1.09