



WEATHER FORECAST FOR BN

28 - 31 JAN 2020





WEATHERFORECAST – DHAKA

28.01.2020

Hourly	2 PM	4 PM	8 PM	11 PM
Temp. / Dew Point	23 / 14	23 / 14	19 / 13	18 / 13
Wind	2 km/h W	3 km/h W	2 km/h NE	3 km/h ESE
Humidity	57%	56%	69%	75%
Chance of Precip	1%	1%	3%	4%
Cloud Cover	41%	29%	12%	11%
Conditions	Sunny	Sunny	Clear	Clear
Sunrise Sunset	6: 42 AM 5: 42 PM			

Conditions

Pressure : 1013 hpa

Visibility : 3.22 km

Ref: <https://www.wunderground.com/weather/bd/dhaka>



WEATHER FORECAST – CHATTOGRAM

28.01.2020

Hourly	2 PM	4 PM	8 PM	11 PM
Temp. / Dew Point	24 / 11	23 / 12	20 / 14	18 / 15
Wind	8 km/h WNW	9 km/h WNW	7 km/h NW	6 km/h NW
Humidity	45%	49%	69%	79%
Chance of Precip.	1%	1%	2%	4%
Cloud Cover	25%	18%	1%	1%
Conditions	Sunny	Sunny	Clear	Clear
Sunrise Sunset	6: 34 AM 5: 39 PM			

Conditions

Pressure : 1013 hpa

Visibility : 3.38 Km

Ref: <https://www.wunderground.com/weather/bd/chittagong>



WEATHER FORECAST – KHULNA

28.01.2020

Hourly	2 PM	4 PM	8 PM	11 PM
Temp. / Dew Point	24 / 14	24 / 14	20 / 15	18 / 16
Wind	6 km/h WSW	6 km/h W	6 km/h S	5 km/h SSW
Humidity	52%	51%	74%	87%
Chance of Precip.	1%	1%	2%	5%
Cloud Cover	1%	5%	7%	12%
Conditions	Sunny	Sunny	Clear	Clear
Sunrise Sunset	6: 44 AM 5: 48 PM			

Conditions

Pressure : 1013 hpa

Visibility : 14.48 Km

Ref: <https://www.wunderground.com/weather/bd/khulna>



GENERAL WEATHER FORECAST – DHAKA

Description	29 Jan 2020	30 Jan 2020	31 Jan 2020
Temperature (C)	24 °C / 17 °C	23 °C / 16 °C	23 °C / 13 °C
Summary	Partly Cloudy / Sunny	Partly Cloudy / Sunny	Partly Cloudy / Sunny
Sun Rise/Set	6h40m30s/17h42m24s	6h40m12s/17h43m06s	6h39m48s/17h43m48s
Day Length	11h01m54s	11h02m54s	11h04m00s
Moon Rise/ Set	9:32AM 9:33PM	10:04AM 10:21PM	10:36AM 11:11PM
Moon Phase/ illu	Waxing Crescent, 21%	Waxing Crescent, 30%	Waxing Crescent, 39%
NauticalTwilight	0549,1833	0549,1834	0549,1834
Civil Twilight	0616,1806	0616,1806	0616,1807
Humidity	D : 76% N : 83%	D : 84% N : 90%	D : 70% N : 75%
Barometer (mb)	1015	1014	1013
Visibility	Moderate	Moderate	Moderate
Precip Chance	20%	60%	10%
Wind (mph)	8 Km/h ESE	7 Km/h S	11 Km/h WNW

Ref: <https://weather.com/weather/5day//BGXX0003:1:BG>



GENERAL WEATHER FORECAST– CHATTOGRAM

Description	29 Jan 2020	30 Jan 2020	31 Jan 2020
Temperature (C)	26 °C/ 16 °C	25 °C/ 17 °C	25 °C/ 15 °C
Summary	Partly Cloudy / Sunny	Partly Cloudy / Sunny	Partly Cloudy / Sunny
Sun Rise/Set	6h32m24s/17h39m06s	6h32m06s/17h39m42s	6h31m42s/17h40m18s
Day Length	11h06m42s	11h07m36s	11h08m36s
Moon Rise/ Set	9:25AM 9:27PM	9:58AM 10:15PM	10:30AM 11:05PM
Moon Phase/ illu	Waxing Crescent, 21%	Waxing Crescent, 30%	Waxing Crescent, 39%
Nautical Twilight	0542, 1829	0541, 1830	0541, 1830
Civil Twilight	0609.,1802	0608.,1803	0608.,1803
Humidity	D : 65% N : 83%	D : 73% N : 91%	D : 74% N : 83%
Barometer (mb)	1016	1015	1013
Visibility	Moderate	Moderate	Moderate
Precip Chance	10%	20%	10%
Wind (mph)	9 km/h NNE	10 km/h NW	11 km/h NNW

Ref: <https://weather.com/weather/5day//BGXX0002:1:BG>



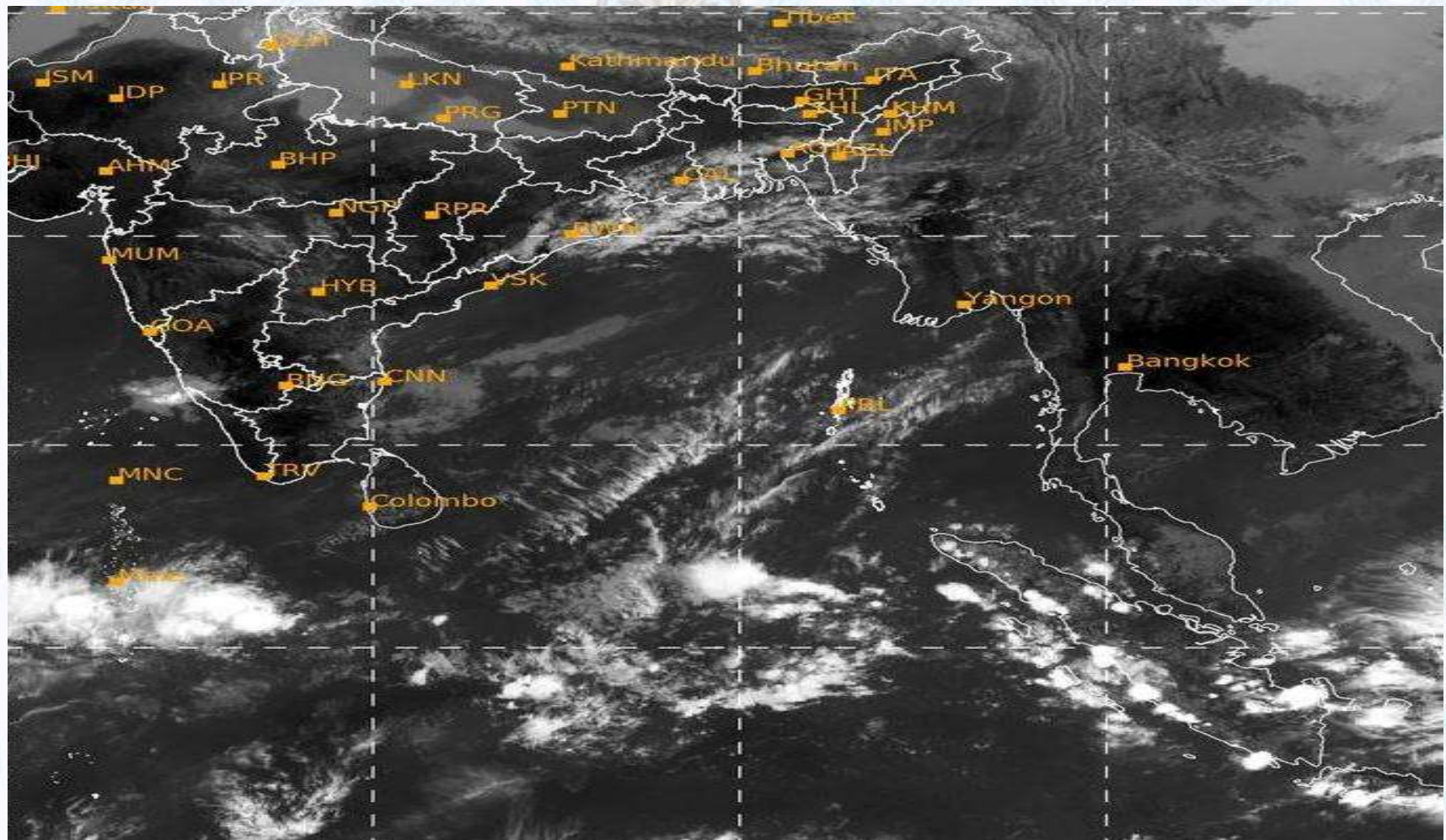
GENERAL WEATHER FORECAST – KHULNA

Description	29 Jan 2020	30 Jan 2020	31 Jan 2020
Temperature(C)	24 °C/ 17 °C	23 °C/ 15 °C	23 °C/ 12 °C
Summary	Light Rain	Light Rain	Partly Cloudy/ Sunny
Sun Rise/Set	6h42m18s/17h47m24s	6h42m00s/17h48m06s	6h41m42s/17h48m42s
Day Length	11h05m06s	11h06m06s	11h07m00s
Moon Rise/Set	9:36AM 9:37PM	10:08AM 10:26PM	10:40AM 11:15PM
Moon Phase/illu	Waxing Crescent, 21%	Waxing Crescent, 30%	Waxing Crescent, 39%
NauticalTwilight	0551, 1838	0551, 1838	0551, 1839
Civil Twilight	0618.,1810	0618.,1811	0618.,1812
Humidity	D : 80% N : 91%	D : 89% N : 91%	D : 69% N : 75%
Barometer (mb)	1015	1014	1013
Visibility	Moderate	Moderate	Moderate
Precip Chance	40%	80%	10%
Wind (mph)	9 km/h ESE	7 km/h SE	11 km/h NW

Ref: <https://weather.com/weather/5day//BGXX0005:1:BG>



SATELLITE VIEW OF BAY OF BENGAL

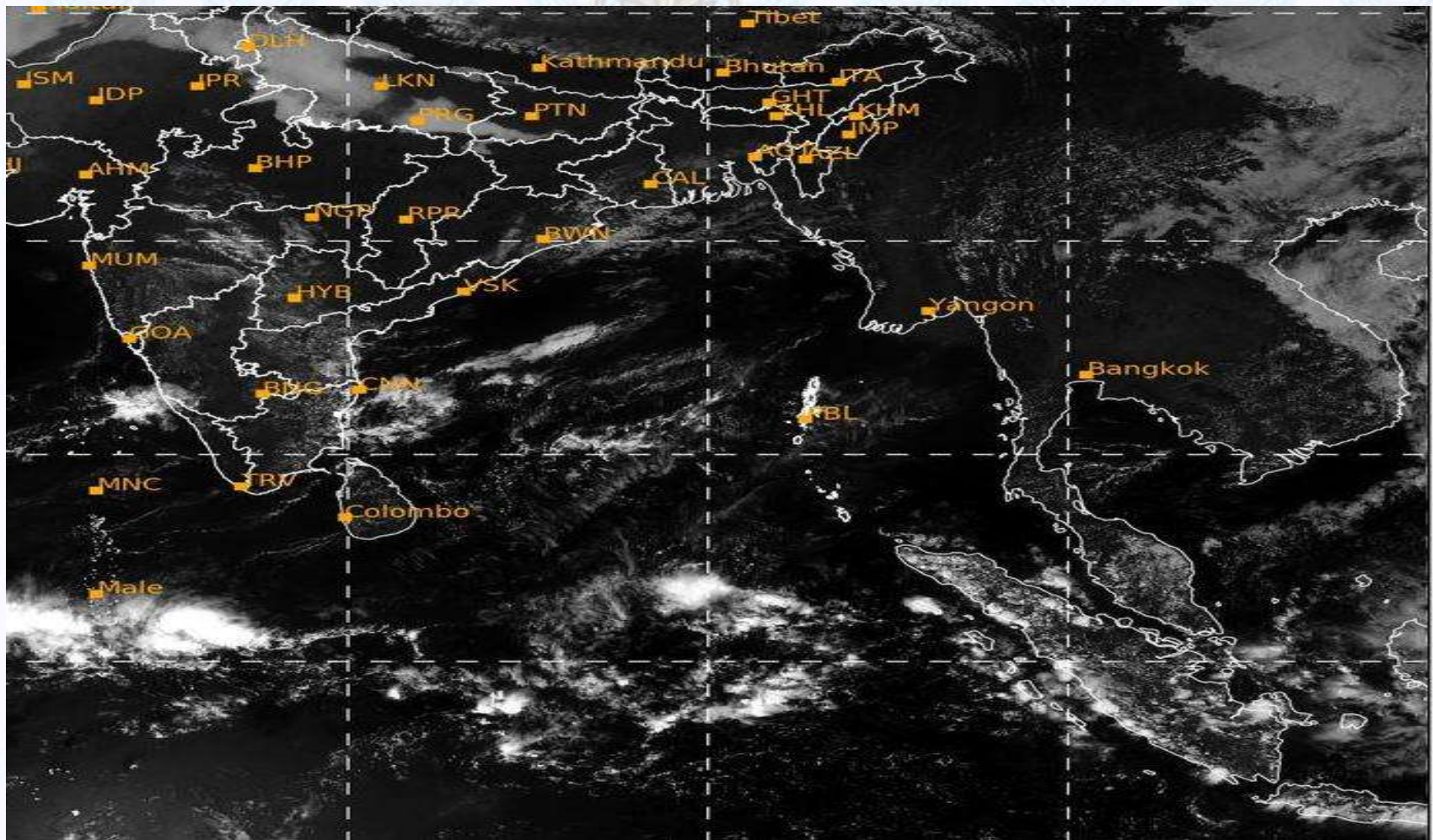


28/01/2020, 11:00 UTC MATSAT-IR

Ref: <http://satellite.imd.gov.in/insat.htm>



SATELLITE VIEW OF BAY OF BENGAL



28/01/2020, 11:00 MATSAT-VIS

Ref: <http://satellite.imd.gov.in/insat.htm>



Fleet Forecast Sea Area C-90 (Valid for 12 Hrs Commencing 1000 UTC of 28.01.2020)

Part One	NO STORM WARNING.	
Part Two	SEASONAL LOW LIES OVER SOUTH BAY.	
Part Three	Weather	TEMPORARY PARTLY CLOUDY OVER AREA C -90.
	Wind	WEST/NORTH-WESTERLY, 08-12 KTS.
	Visibility	02-04 KMS REDUCING TO 1000M OR LESS IN FOG/MIST.
	Outlook	FOR SUBSEQUENT 12 HOURS: LITTLE CHANGE.
	MSL Pressure	AT =28,0000 UTC. CHATTOGRAM =1013 HPA



Inland River Port Warning (VALID TILL 06 PM OF 28.01.2020)

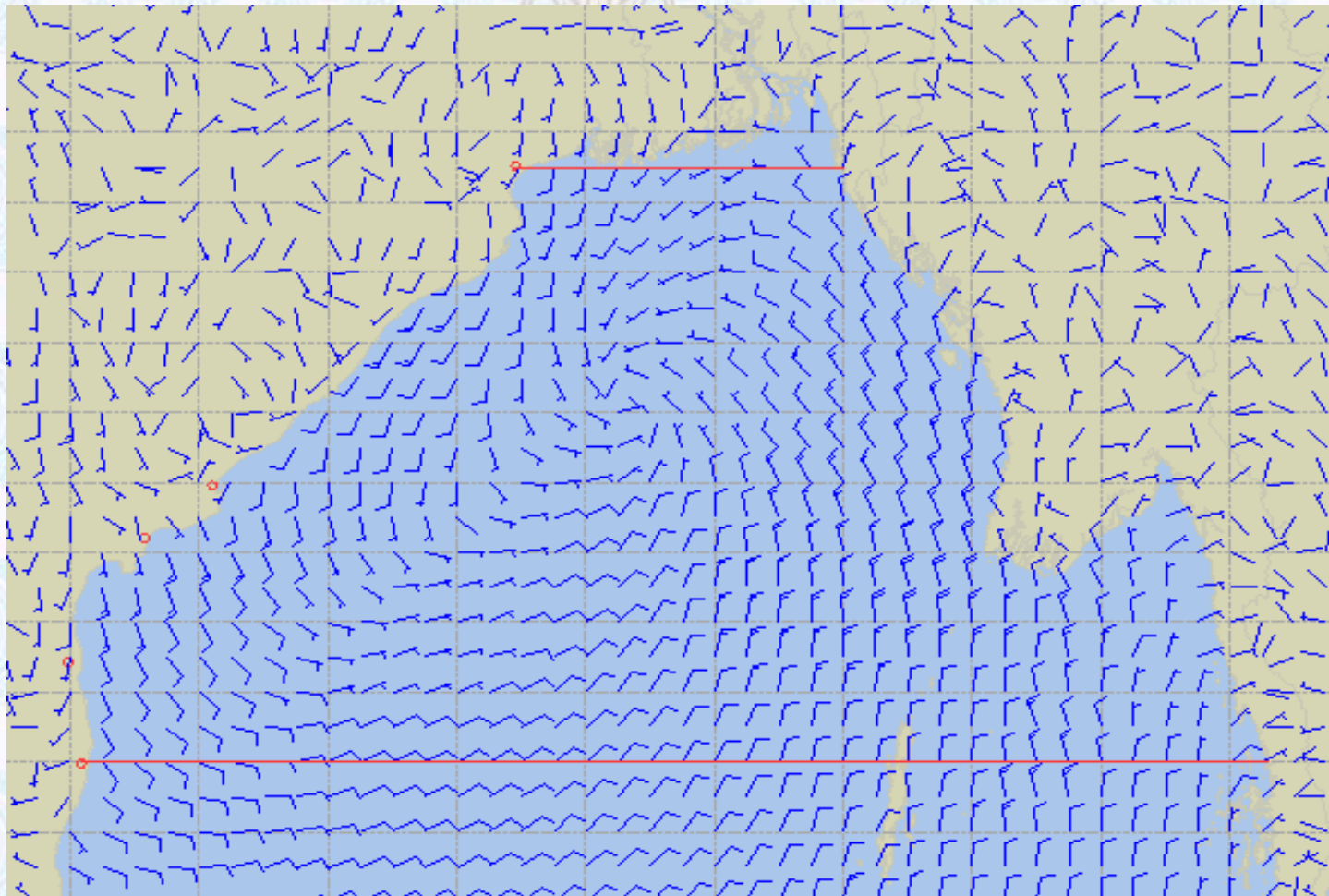
THERE IS NO INLAND RIVERPORTS WARNING & NO SIGNAL IS TO BE HOISTED.



Ref: <http://www.bmd.gov.bd/?/home>



Surface Wind Forecast- 29 Jan- 2020



Legend:



**Calm
Winds**



5 Knots



10 Knots



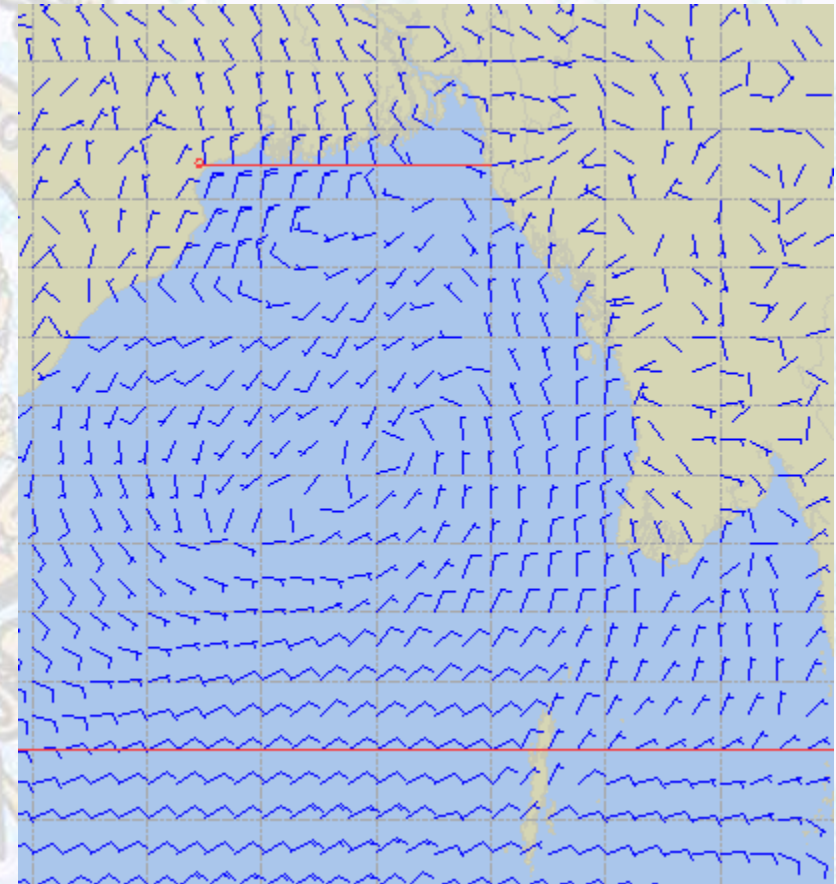
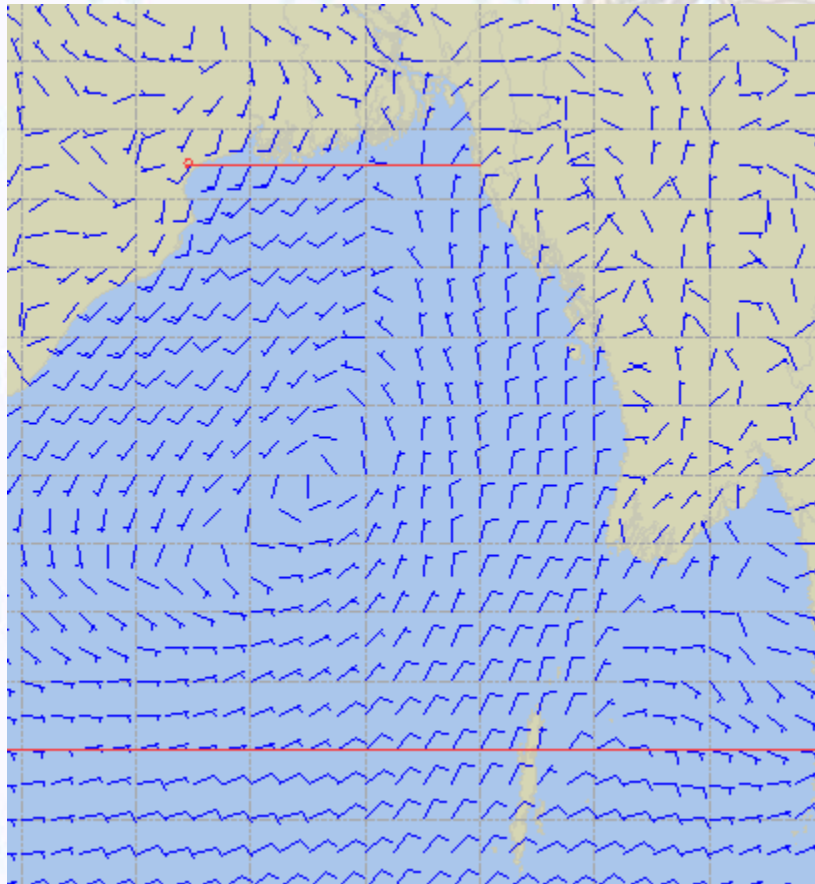
60 Knots



Surface Wind Forecast – 30 & 31 Jan - 2020

30 Jan 2020 Thursday

31 Jan 2020 Friday



Legend:



Calm
Winds



5 Knots



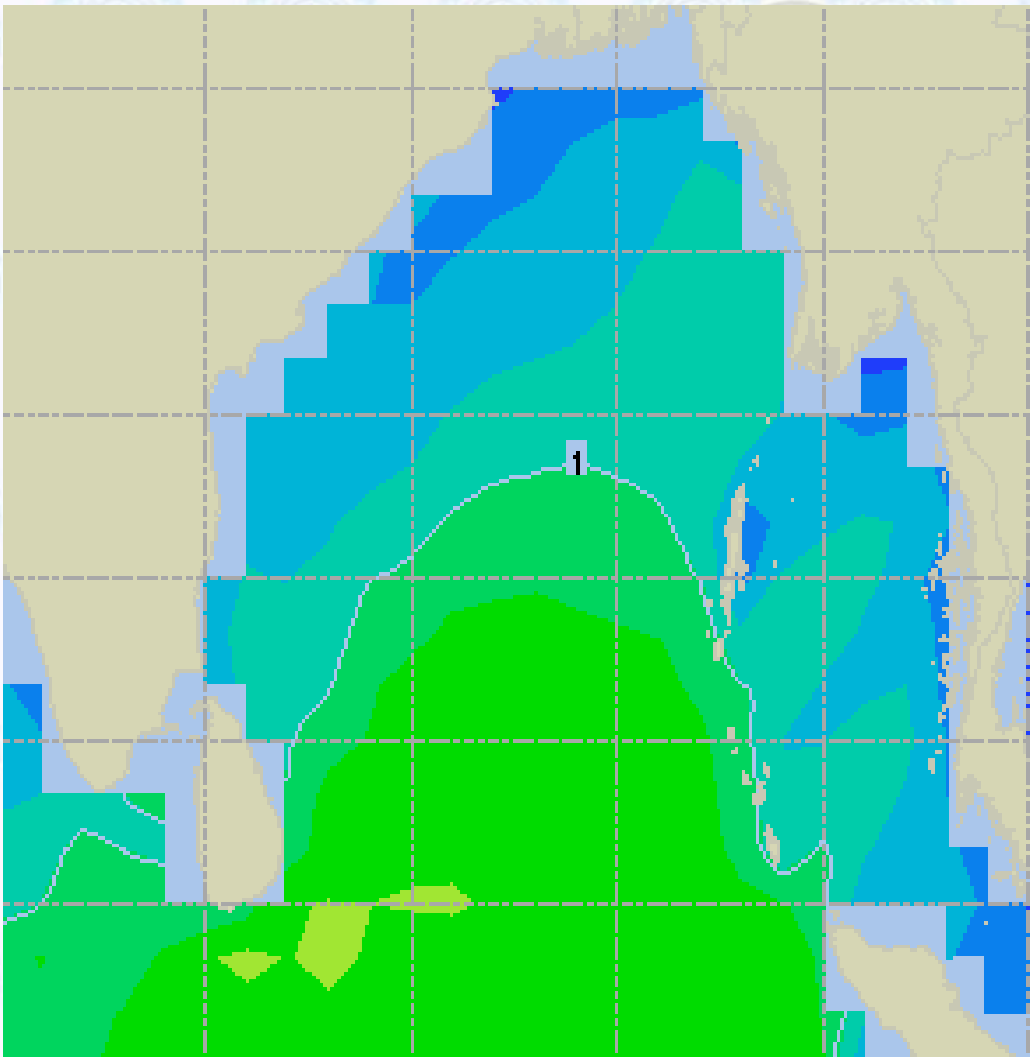
10 Knots



60 Knots



Sea State Forecast- 29 Jan - 2020



Sea State	Ht (m)
0	0-0.1
1	0-0.1
2	0.1-0.5
3	0.5-1.25
4	1.25-2.5
5	2.5-4.0
6	4-6
7	6-9
8	9-14
9	Over 14

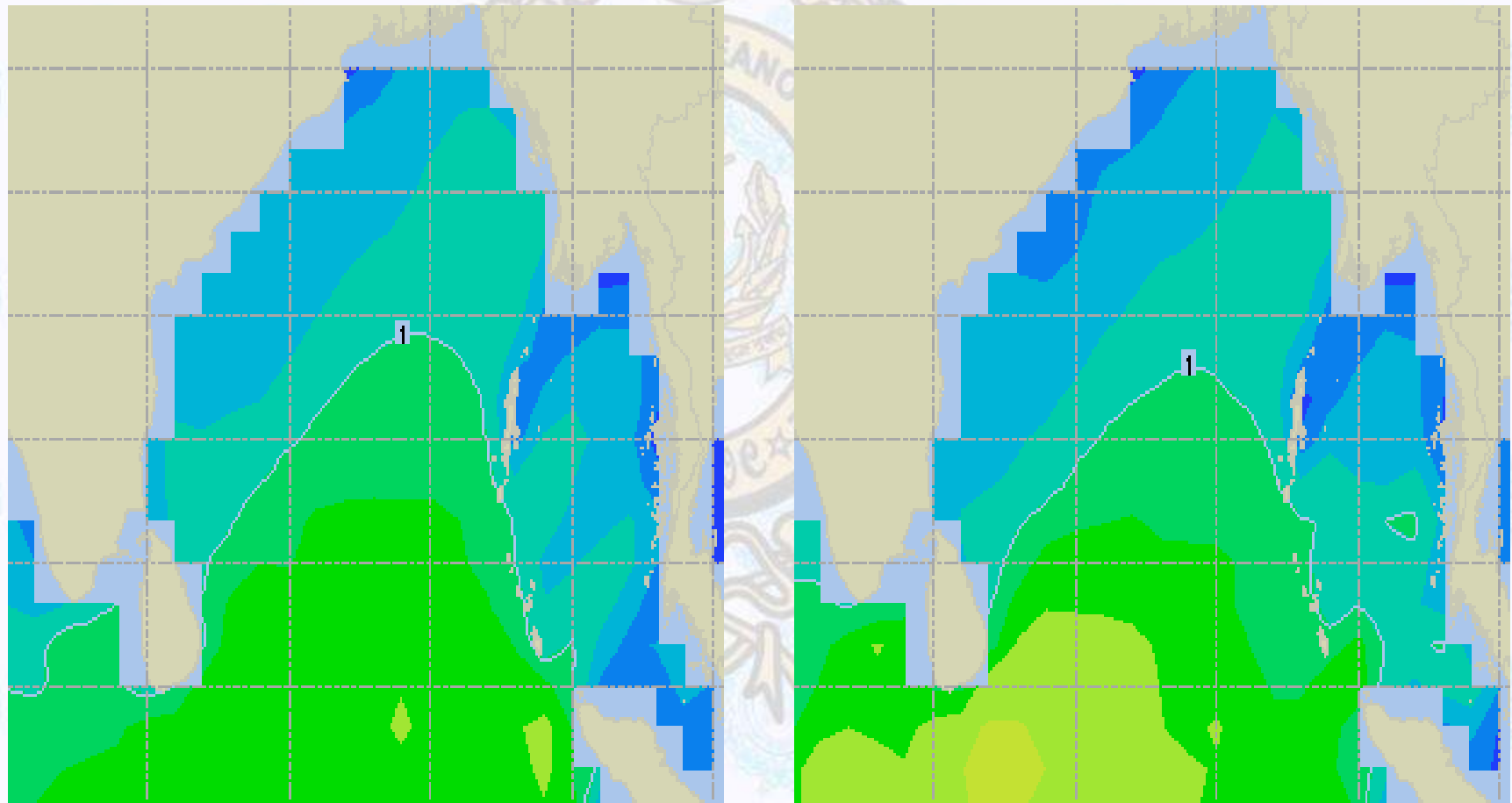




Sea State Forecast – 30 & 31 Jan - 2020

30 Jan 2020 Thursday

31 Jan 2020 Friday

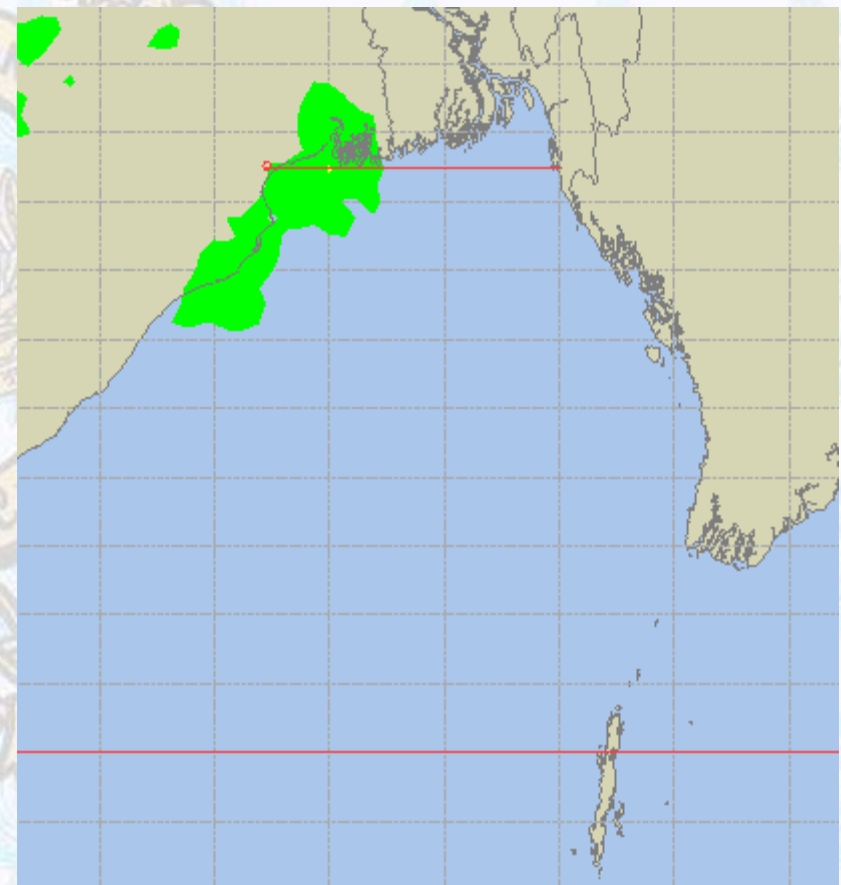
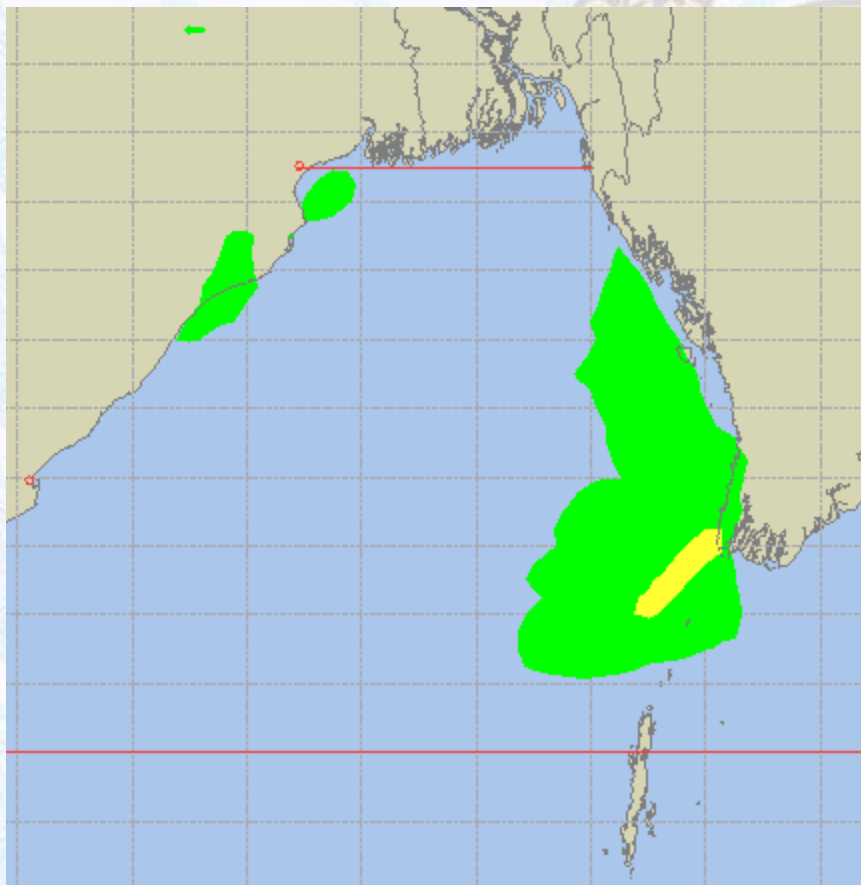




Peak Gusting Possibilities – 29 & 30 Jan - 2020

29 Jan 2020 Wednesday

30 Jan 2020 Thursday

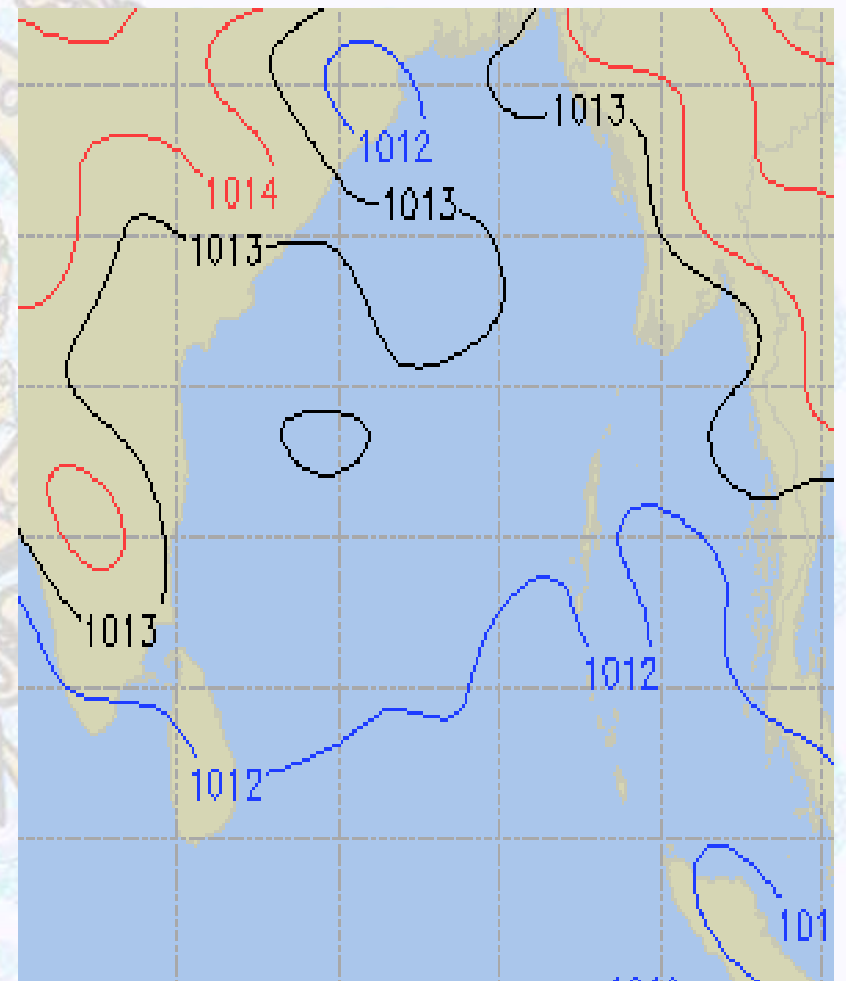
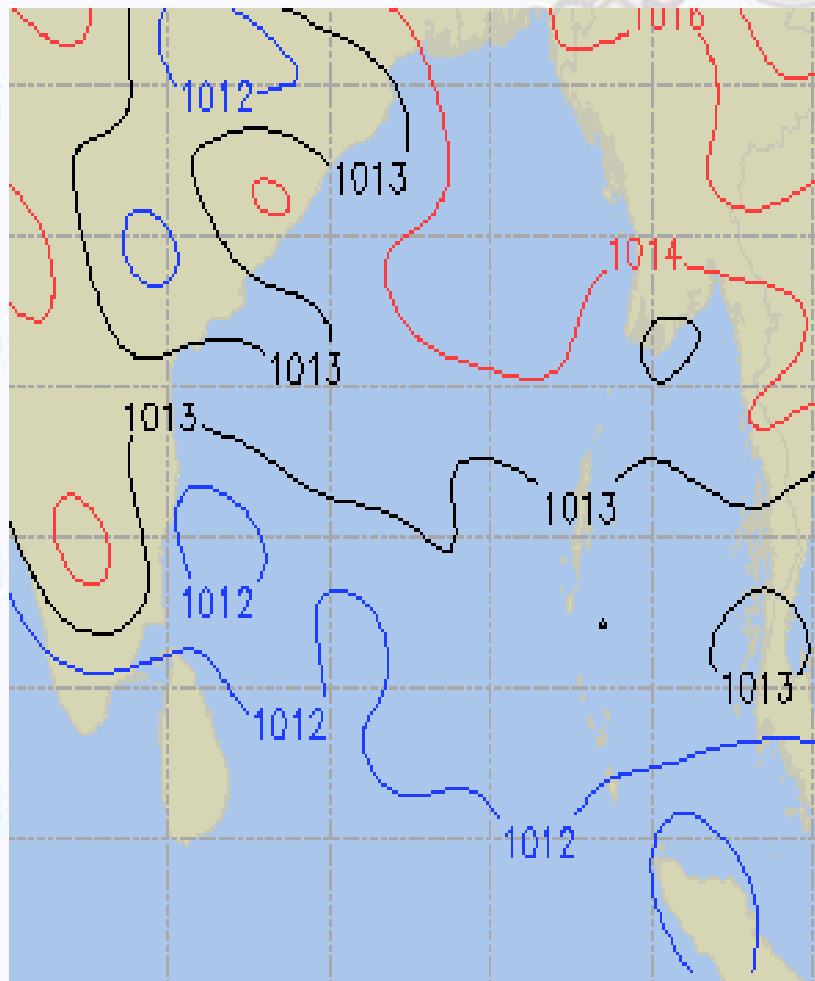




Surface Pressure forecast – 29 & 30 Jan - 2020

29 Jan 2020 Wednesday

30 Jan 2020 Thursday

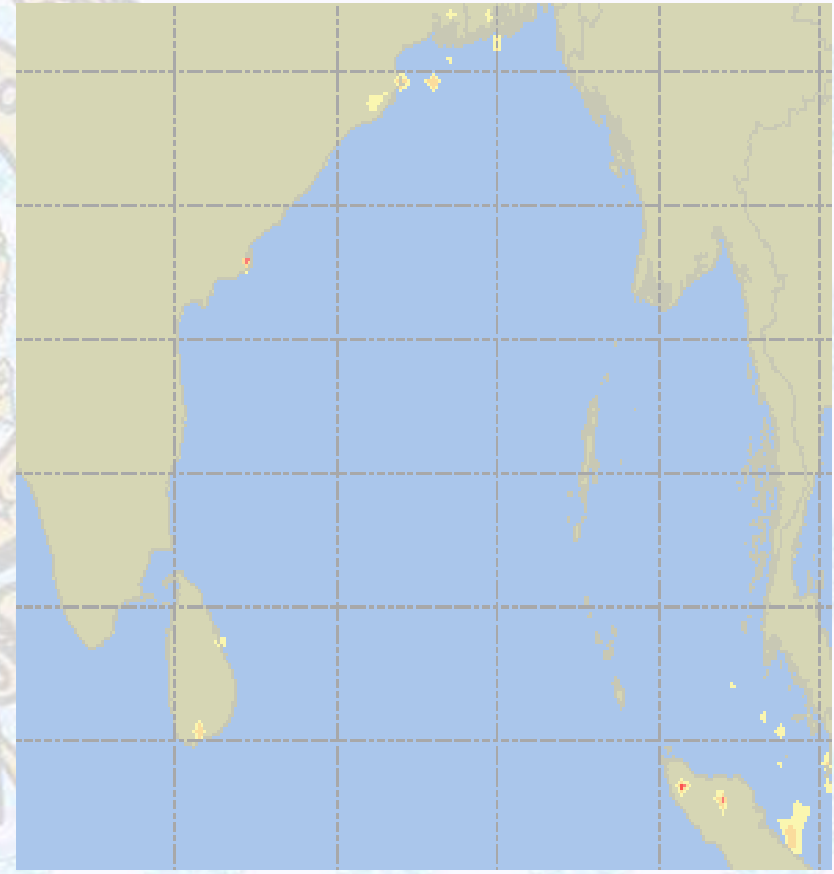
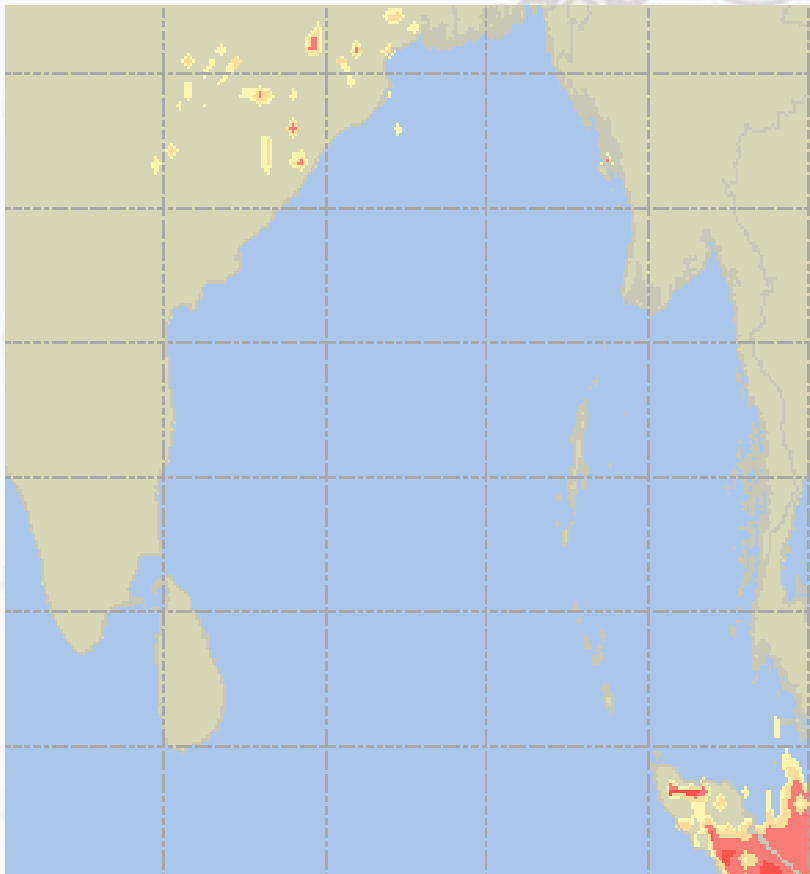




Visibility at Sea Forecast – 29 & 30 Jan - 2020

29 Jan 2020 Wednesday

30 Jan 2020 Thursday



Visibility Scale:



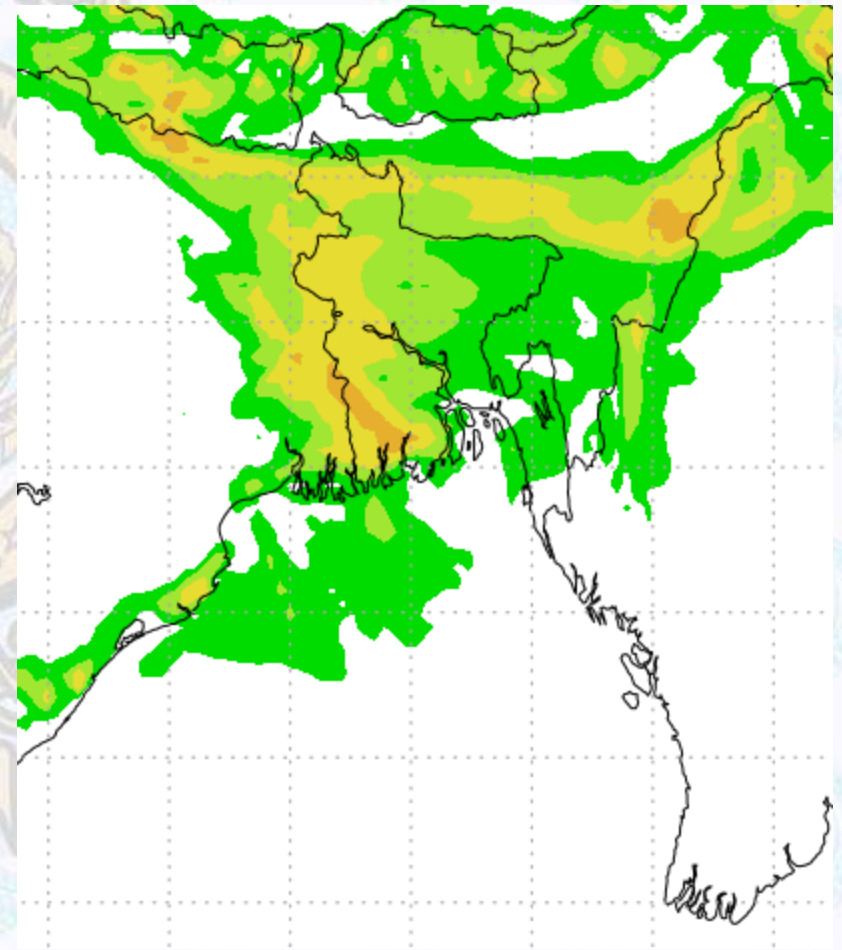
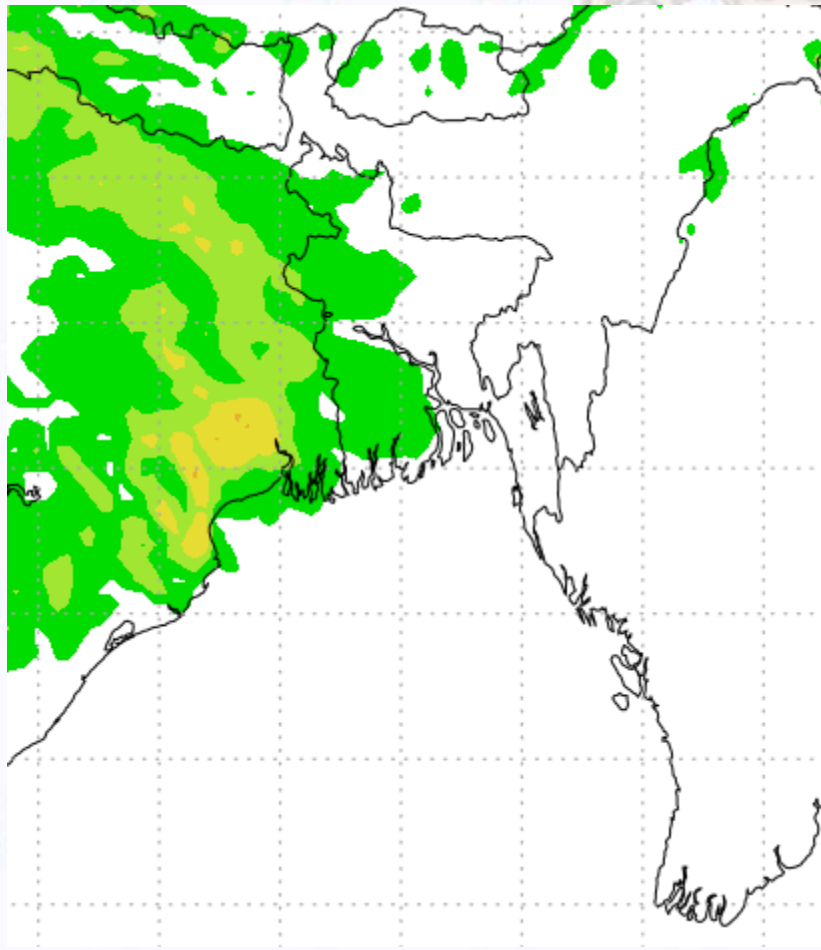
Ref (Slide 12-18): <http://www.weatheronline.co.uk/marine/weather?LEVEL>



Precipitation

Rain(mm) 29 & 30 Jan 20

Rain(mm) 30 & 31 Jan 20



Precipitation Scale (mm):





Tidal Information

KHAL NO. 10

COX'S BAZAR

HIRAN POINT

	Time	Height		Time	Height		Time	Height
29Jan 2020	0309	4.27		0105	3.17		0057	2.74
	0951	0.40		0736	0.42		0723	0.56
	1538	3.92		1320	2.77		1321	2.51
	2154	0.61		1945	0.45		1923	0.70
30Jan 2020	Time	Height		Time	Height		Time	Height
	0344	4.13		0139	3.01		0125	2.66
	1020	0.43		0805	0.49		0750	0.61
	1614	3.84		1356	2.66		1353	2.46
	2229	0.71		2017	0.54		1956	0.81
31Jan 2020	Time	Height		Time	Height		Time	Height
	0422	3.92		0214	2.82		0157	2.54
	1052	0.50		0837	0.57		0819	0.67
	1654	3.72		1434	2.53		1430	2.39
	2309	0.86		2054	0.65		2032	0.94