



WEATHER FORECAST FOR BN

25 - 28 JAN 2020





WEATHERFORECAST – DHAKA

25.01.2020

Hourly	2 PM	4 PM	8 PM	11 PM
Temp. / Dew Point	22 / 11	22 / 11	17 / 11	15 / 11
Wind	7 km/h NW	7 km/h WNW	5 km/h WNW	5 km/h WNW
Humidity	50%	49%	67%	78%
Chance of Precip	1%	1%	3%	4%
Cloud Cover	19%	1%	1%	1%
Conditions	Sunny	Sunny	Clear	Clear
Sunrise Sunset	6: 42 AM 5: 40 PM			

Conditions

Pressure : 1016 hpa

Visibility : 3.22 km

Ref: <https://www.wunderground.com/weather/bd/dhaka>



WEATHER FORECAST – CHATTOGRAM

25.01.2020

Hourly	2 PM	4 PM	8 PM	11 PM
Temp. / Dew Point	23 / 11	22 / 11	19 / 13	17 / 13
Wind	6 km/h WNW	13 km/h WNW	8 km/h WNW	6 km/h NW
Humidity	49%	48%	66%	78%
Chance of Precip.	1%	1%	2%	4%
Cloud Cover	21%	1%	1%	1%
Conditions	Sunny	Sunny	Clear	Clear
Sunrise Sunset	6: 34 AM 5: 37 PM			

Conditions

Pressure : 1015 hpa

Visibility : 8.05 Km

Ref: <https://www.wunderground.com/weather/bd/chittagong>



WEATHER FORECAST – KHULNA

25.01.2020

Hourly	2 PM	4 PM	8 PM	11 PM
Temp. / Dew Point	22 / 9	22 / 9	17 / 11	14 / 11
Wind	11 km/h NW	10 km/h NW	5 km/h NNW	3 km/h N
Humidity	43%	41%	67%	80%
Chance of Precip.	1%	1%	2%	3%
Cloud Cover	1%	1%	1%	1%
Conditions	Sunny	Sunny	Clear	Clear
Sunrise Sunset	6: 45 AM 5: 46 PM			

Conditions

Pressure : 1016 hpa

Visibility : 14.48 Km

Ref: <https://www.wunderground.com/weather/bd/khulna>



GENERAL WEATHER FORECAST – DHAKA

Description	26 Jan 2020	27 Jan 2020	28 Jan 2020
Temperature (C)	23°C/ 12°C	23°C/ 13°C	25°C/ 15°C
Summary	Sunny	Sunny	Sunny
Sun Rise/Set	6h41m36s/17h40m12s	6h41m12s/17h40m54s	6h40m54s/17h41m42s
Day Length	10h58m36s	10h59m42s	11h00m48s
Moon Rise/ Set	7:43AM 6:59PM	8:22AM 7:51PM	8:58AM 8:42PM
Moon Phase/ illu	Waxing Crescent, 3%	Waxing Crescent, 8%	Waxing Crescent, 14%
Nautical Twilight	0550,1831	0550,1832	0549,1832
Civil Twilight	0617,1804	0617,1804	0617,1805
Humidity	D : 64% N : 78%	D : 65% N : 79%	D : 64% N : 77%
Barometer (mb)	1014	1012	1012
Visibility	Good	Good	Good
Precip Chance	10%	10%	10%
Wind (mph)	12 km/h W	11 Km/h W	7 Km/h SW

Ref: <https://weather.com/weather/5day//BGXX0003:1:BG>



GENERAL WEATHER FORECAST– CHATTOGRAM

Description	26 Jan 2020	27 Jan 2020	28 Jan 2020
Temperature (C)	23°C/ 13°C	23°C/ 13°C	24°C/ 14°C
Summary	Sunny	Sunny	Sunny
Sun Rise/Set	6h33m18s/17h36m54s	6h33m00s/17h37m36s	6h32m42s/17h38m24s
Day Length	11h03m36s	11h04m36s	11h05m42s
Moon Rise/ Set	7:35AM 6:55PM	8:14AM 7:47PM	8:51AM 8:37PM
Moon Phase/ illu	Waxing Crescent, 3%	Waxing Crescent, 8%	Waxing Crescent, 14%
Nautical Twilight	0542, 1827	0542, 1828	0542, 1828
Civil Twilight	0609.,1800	0609.,1801	0609.,1801
Humidity	D : 63% N : 84%	D : 66% N : 87%	D : 63% N : 85%
Barometer (mb)	1014	1013	1013
Visibility	Good	Good	Good
Precip Chance	10%	10%	10%
Wind (mph)	11 km/h WNW	11 km/h SW	9 km/h NNW

Ref: <https://weather.com/weather/5day//BGXX0002:1:BG>



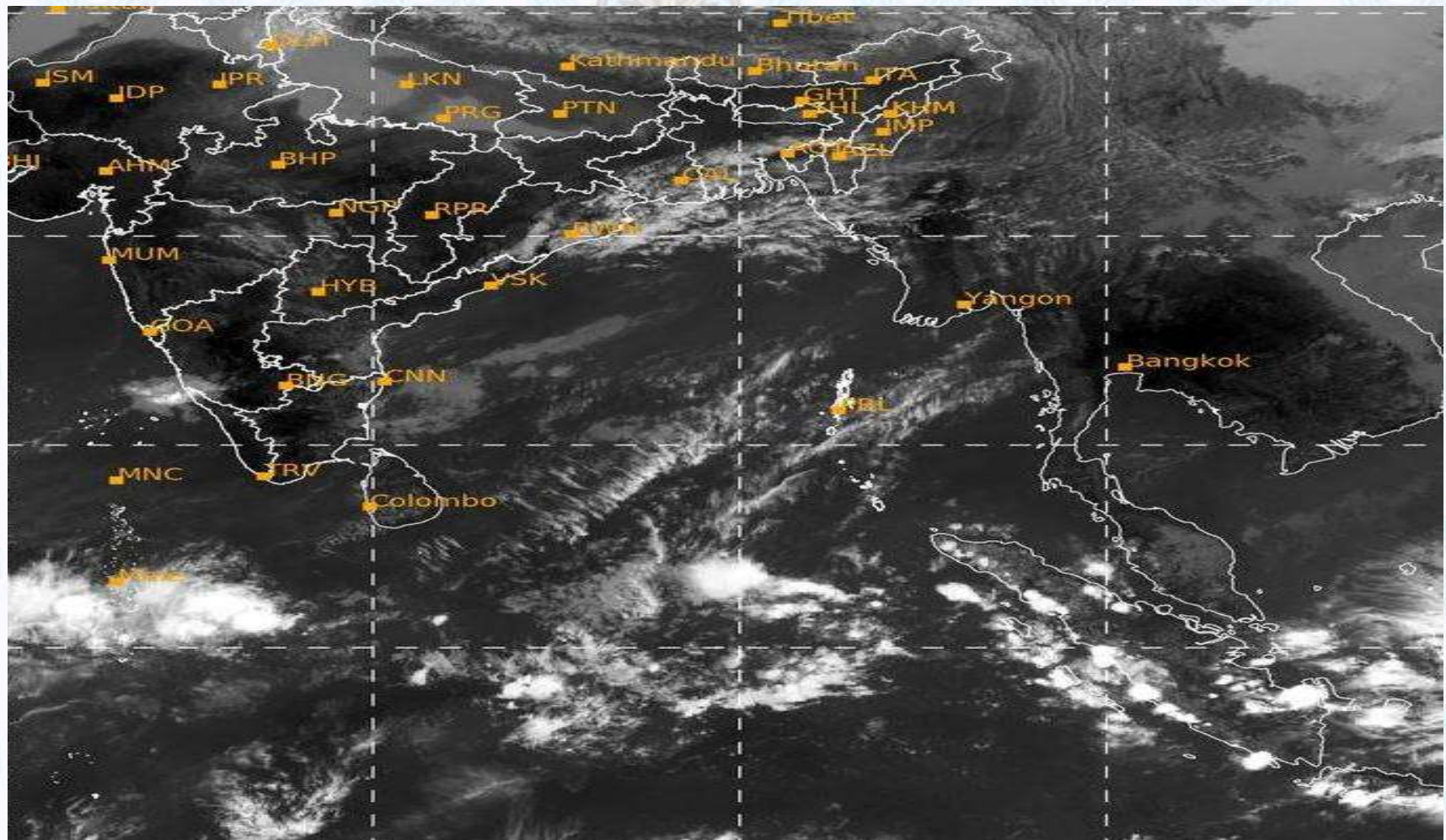
GENERAL WEATHER FORECAST – KHULNA

Description	26 Jan 2020	27 Jan 2020	28 Jan 2020
Temperature(C)	23°C/ 11°C	23°C/ 12°C	26°C/ 14°C
Summary	Sunny	Sunny	Sunny
Sun Rise/Set	6h43m18s/17h45m12s	6h43m00s/17h45m54s	6h42m42s/17h46m42s
Day Length	11h01m54s	11h02m54s	11h04m00s
Moon Rise/Set	7:45AM 7:05PM	8:24AM 7:57PM	9:01AM 8:47PM
Moon Phase/illu	Waxing Crescent, 3%	Waxing Crescent, 8%	Waxing Crescent, 14%
Nautical Twilight	0552, 1836	0552, 1836	0552, 1837
Civil Twilight	0619.,1809	0619.,1809	0619.,1810
Humidity	D : 63% N : 82%	D : 65% N : 83%	D : 61% N : 79%
Barometer (mb)	1014	1013	1012
Visibility	Good	Good	Good
Precip Chance	10%	10%	10%
Wind (mph)	12 km/h WNW	12 km/h WNW	8 km/h WSW

Ref: <https://weather.com/weather/5day//BGXX0005:1:BG>



SATELLITE VIEW OF BAY OF BENGAL

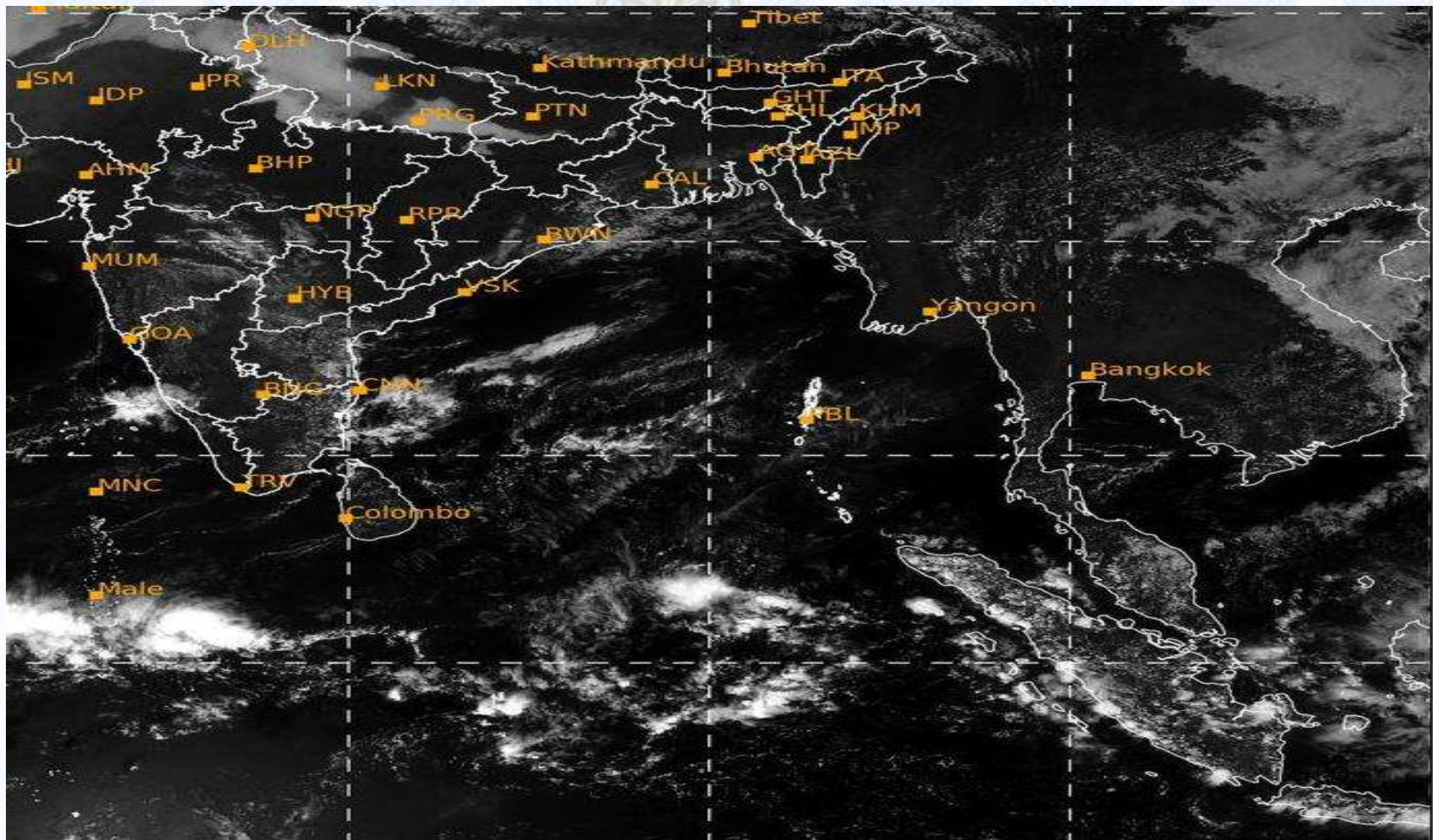


25/01/2020, 11:00 UTC MATSAT-IR

Ref: <http://satellite.imd.gov.in/insat.htm>



SATELLITE VIEW OF BAY OF BENGAL



25/01/2020, 11:00 MATSAT-VIS

Ref: <http://satellite.imd.gov.in/insat.htm>



Fleet Forecast Sea Area C-90 (Valid for 12 Hrs Commencing 1000 UTC of 25.01.2020)

Part One	NO STORM WARNING.	
Part Two	SEASONAL LOW LIES OVER SOUTH BAY.	
Part Three	Weather	TEMPORARY PARTLY CLOUDY OVER AREA C-90.
	Wind	NORTH/NORTH-EASTERLY, 08-15 KTS.
	Visibility	02-04 KMS REDUCING TO 1000M OR LESS IN FOG.
	Outlook	FOR SUBSEQUENT 12 HOURS: LITTLE CHANGE.
	MSL Pressure	AT =25,0000 UTC. CHATTOGRAM =1014 HPA



Inland River Port Warning (VALID TILL 06 PM OF 25.01.2020)

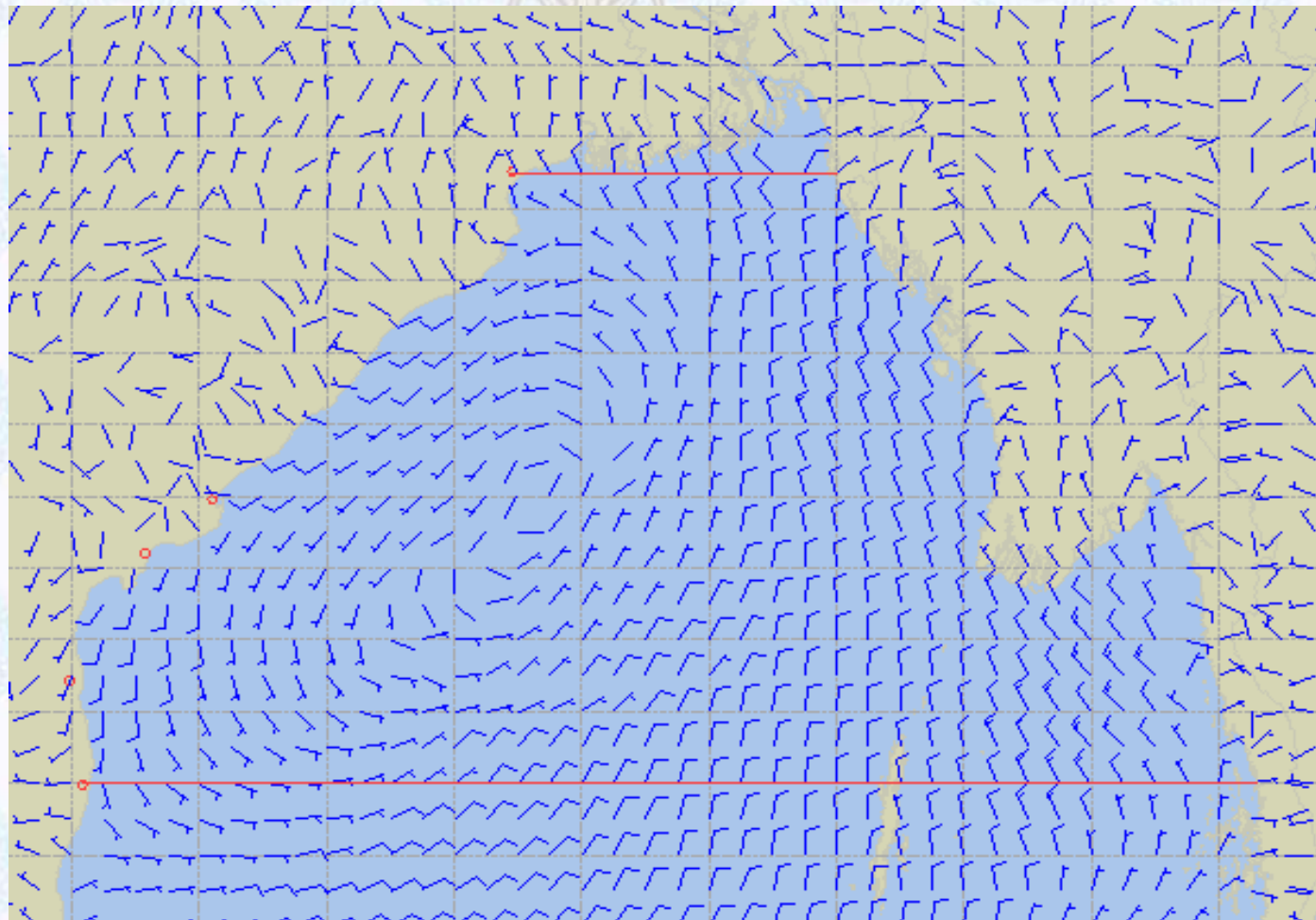
THERE IS NO INLAND RIVERPORTS WARNING & NO SIGNAL IS TO BE HOISTED.



Ref: <http://www.bmd.gov.bd/?/home>



Surface Wind Forecast- 26 Jan- 2020



Legend:



Calm
Winds



5 Knots



10 Knots



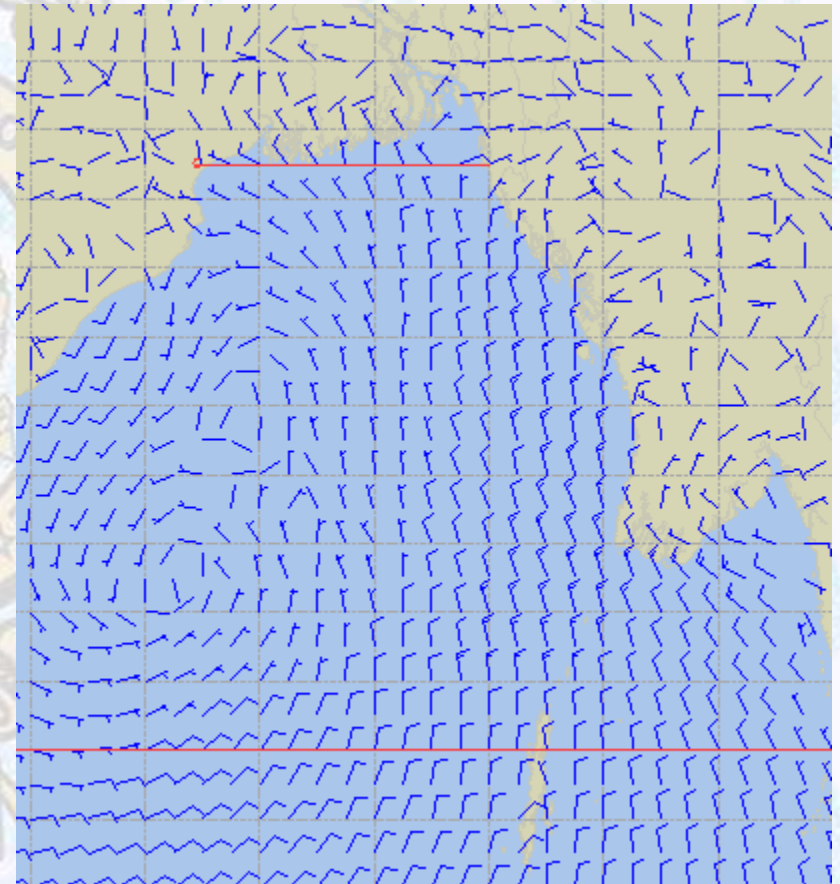
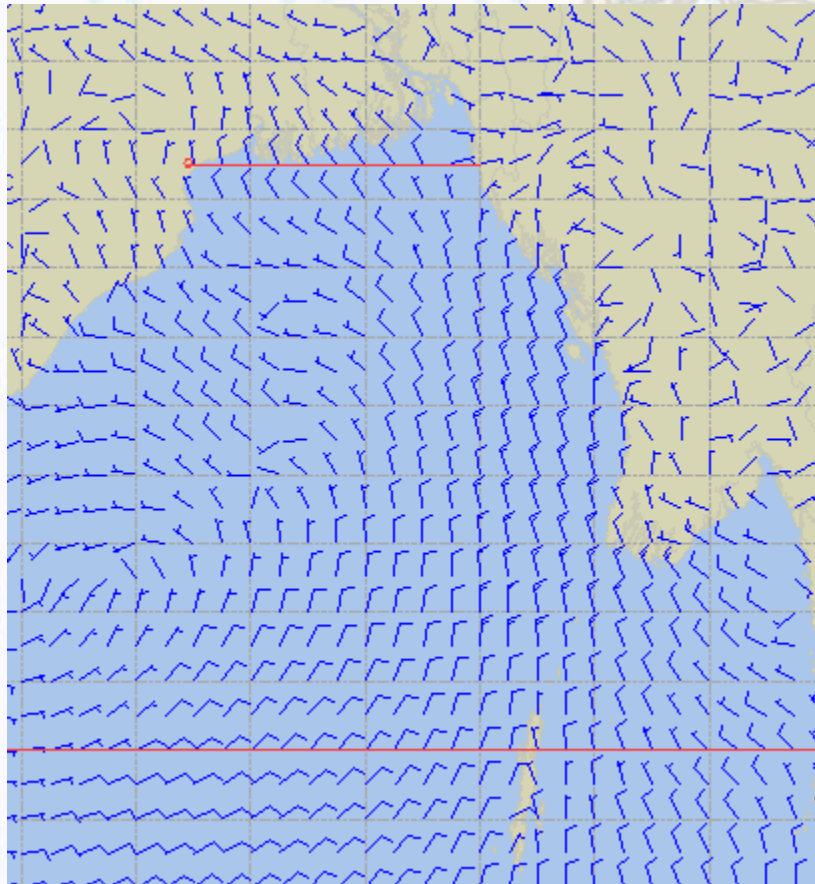
60 Knots



Surface Wind Forecast – 27 & 28 Jan - 2020

27 Jan 2020 Monday

28 Jan 2020 Tuesday



Legend:



Calm
Winds



5 Knots



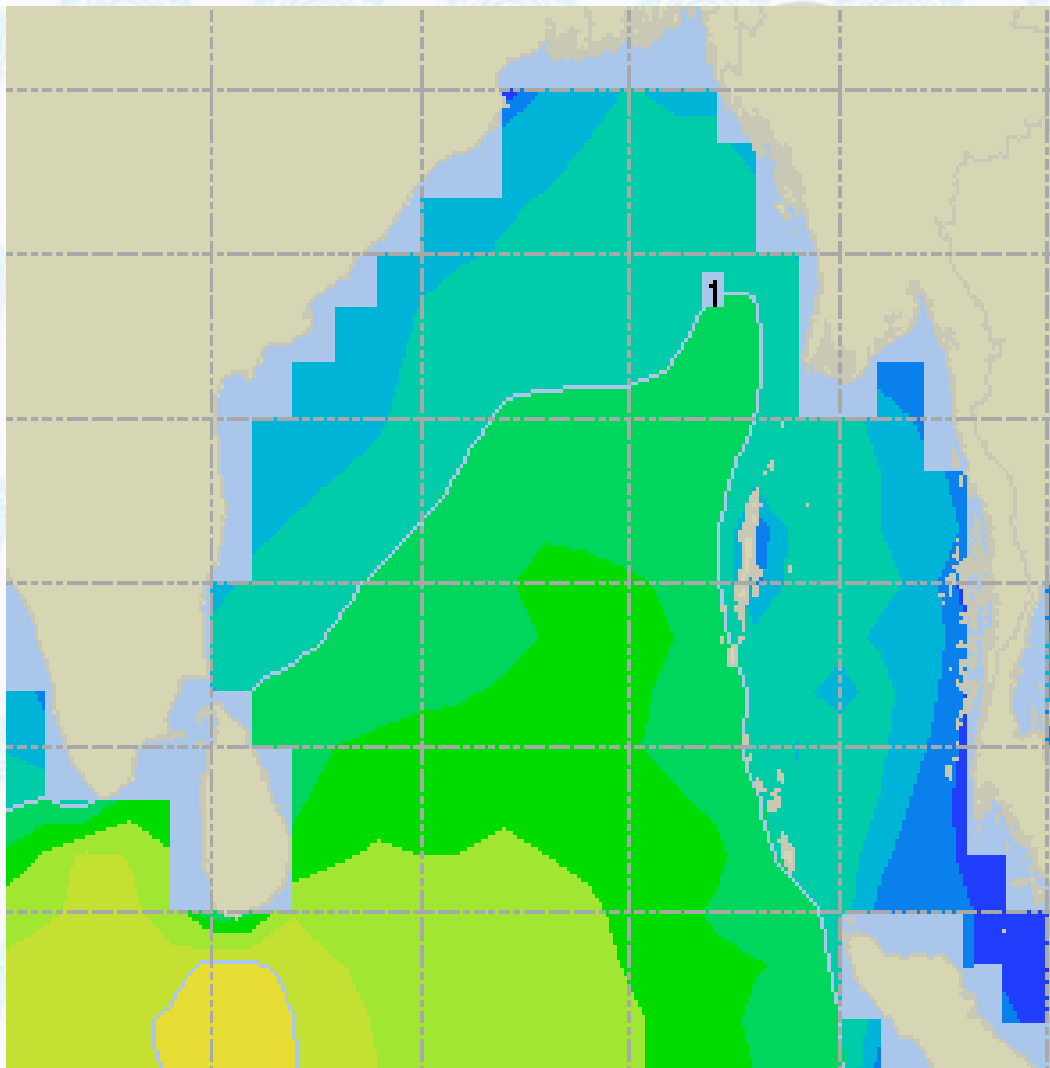
10 Knots



60 Knots



Sea State Forecast- 26 Jan - 2020



Sea State	Ht (m)
0	0-0.1
1	0-0.1
2	0.1-0.5
3	0.5-1.25
4	1.25-2.5
5	2.5-4.0
6	4-6
7	6-9
8	9-14
9	Over 14

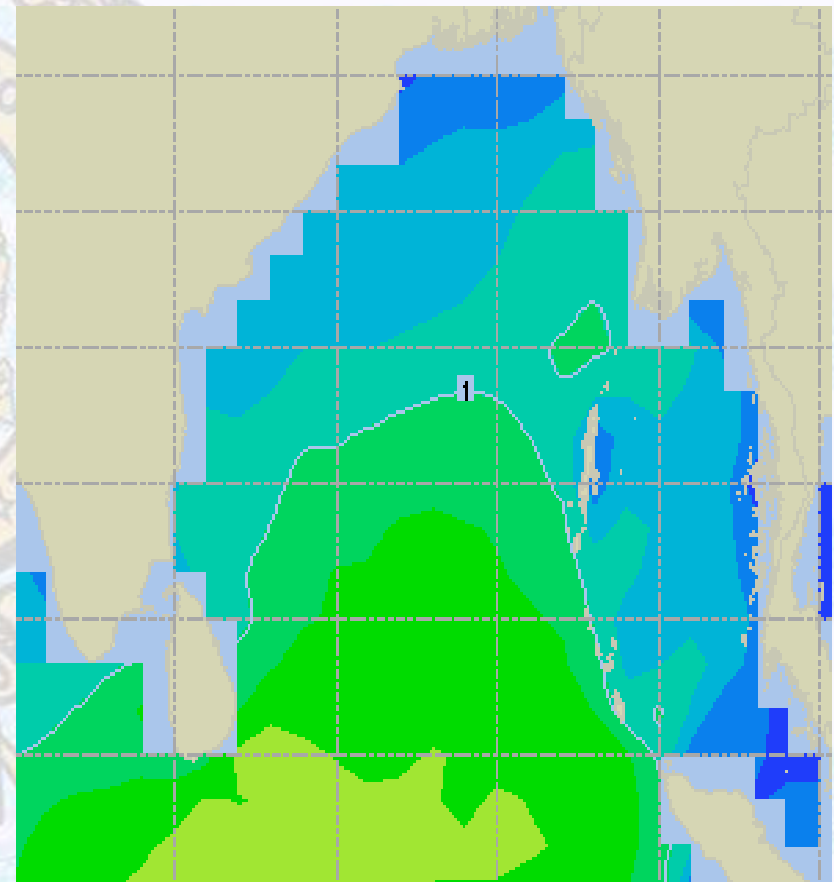
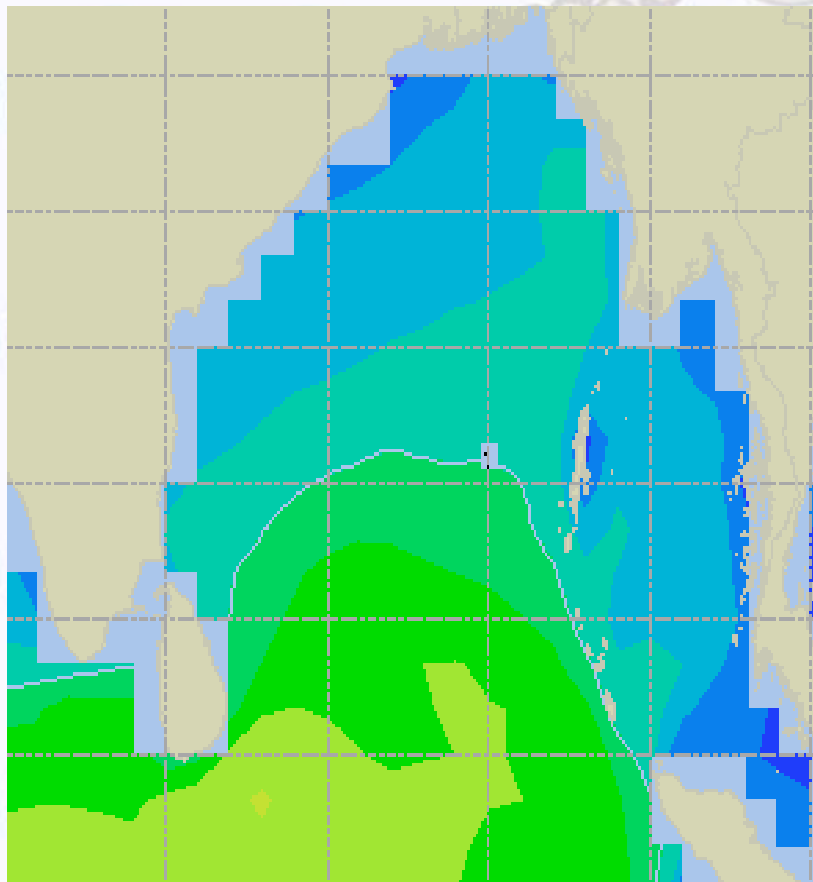




Sea State Forecast – 27 & 28 Jan - 2020

27 Jan 2020 Monday

28 Jan 2020 Tuesday

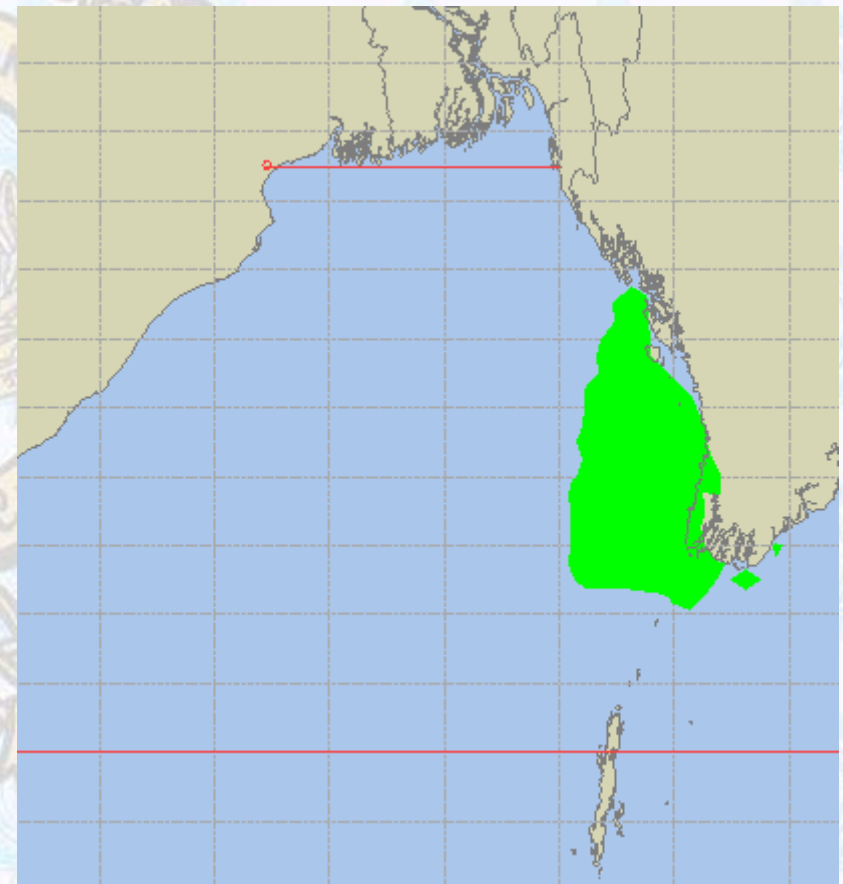
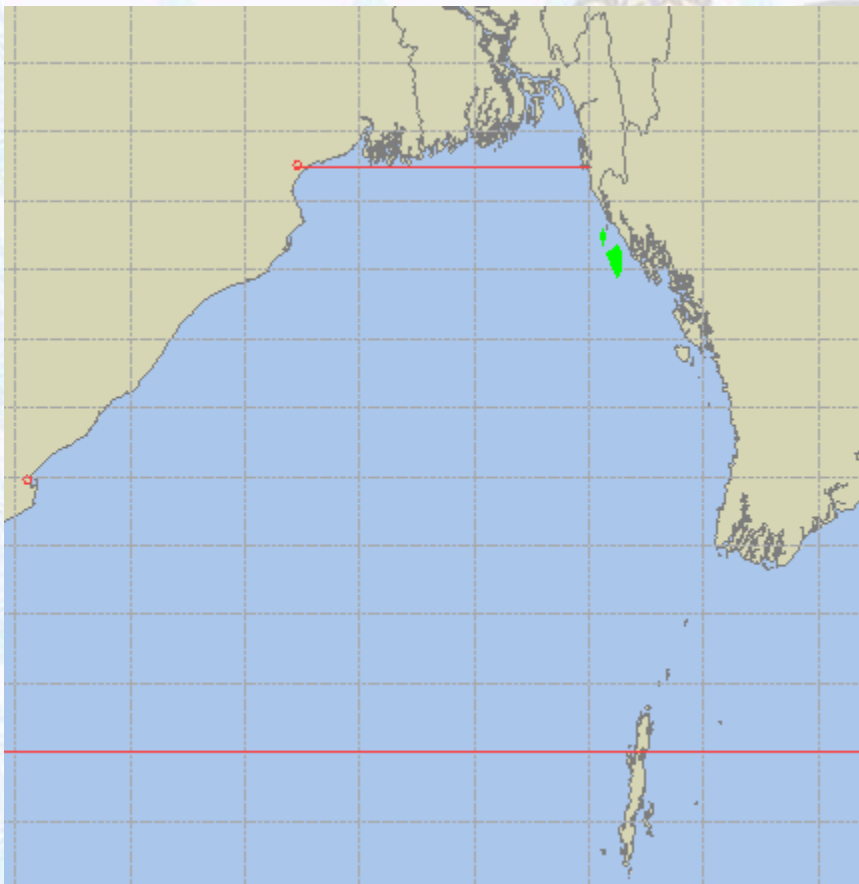




Peak Gusting Possibilities – 26 & 27 Jan - 2020

26 Jan 2020 Sunday

27 Jan 2020 Monday

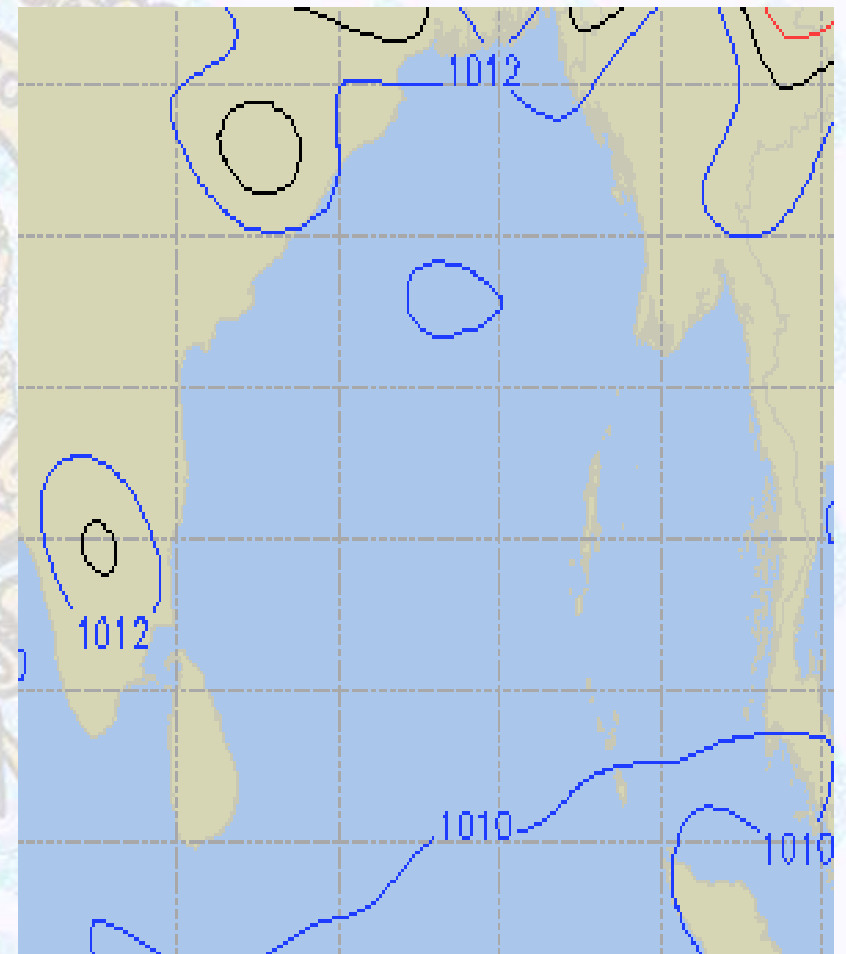
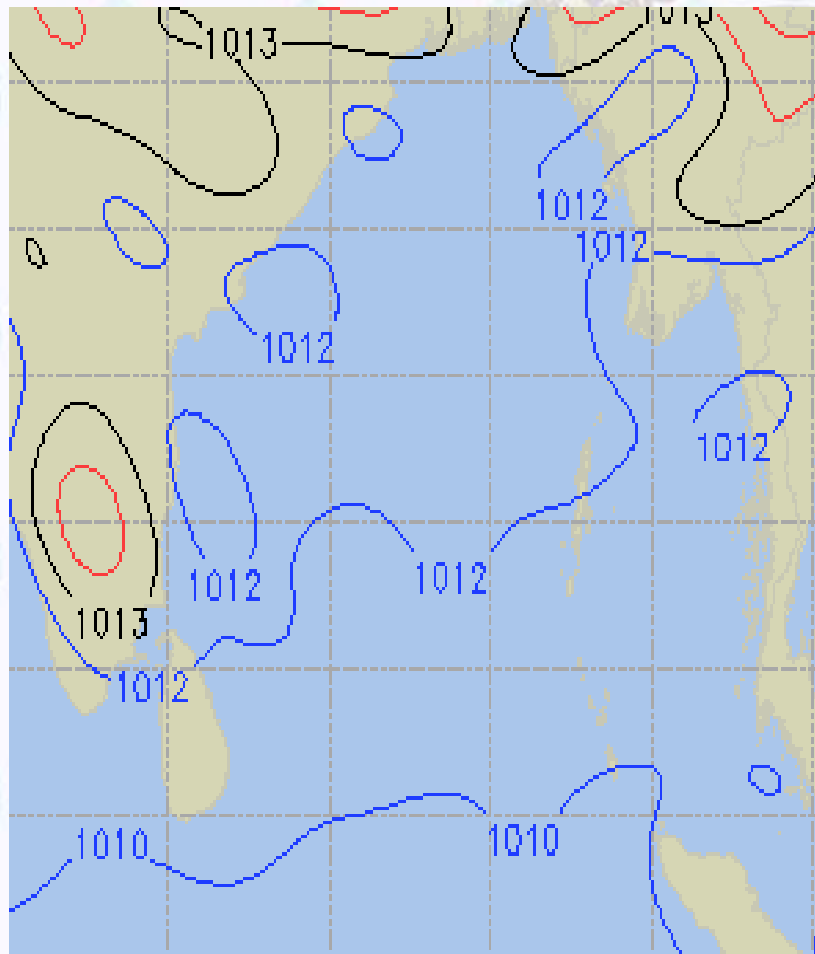




Surface Pressure forecast – 26 & 27 Jan - 2020

26 Jan 2020 Sunday

27 Jan 2020 Monday

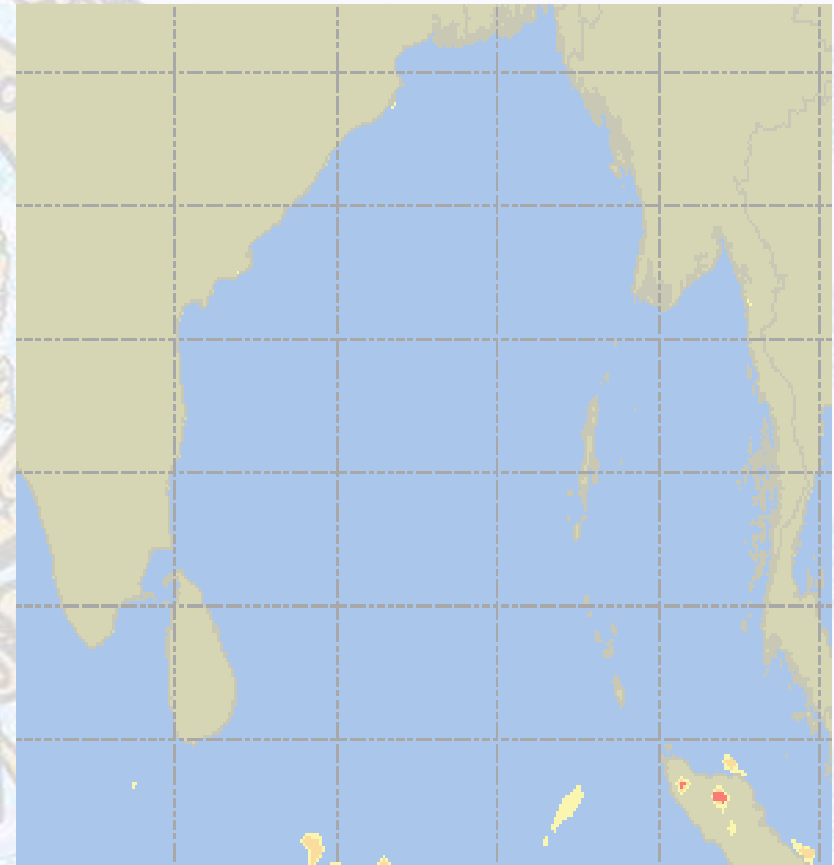
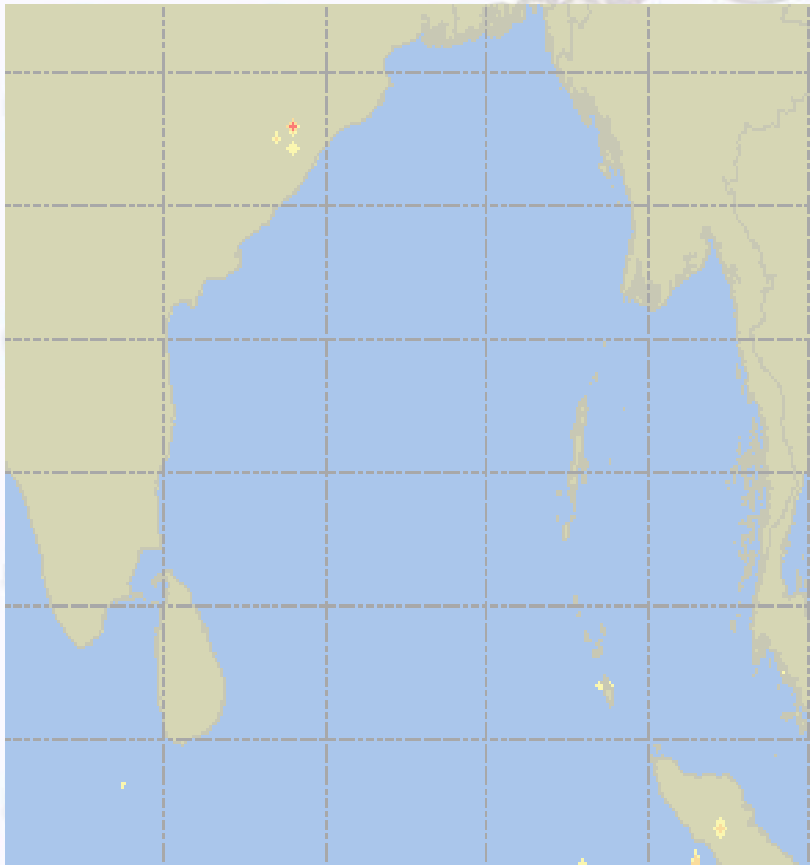




Visibility at Sea Forecast – 26 & 27 Jan - 2020

26 Jan 2020 Sunday

27 Jan 2020 Monday



Visibility Scale:



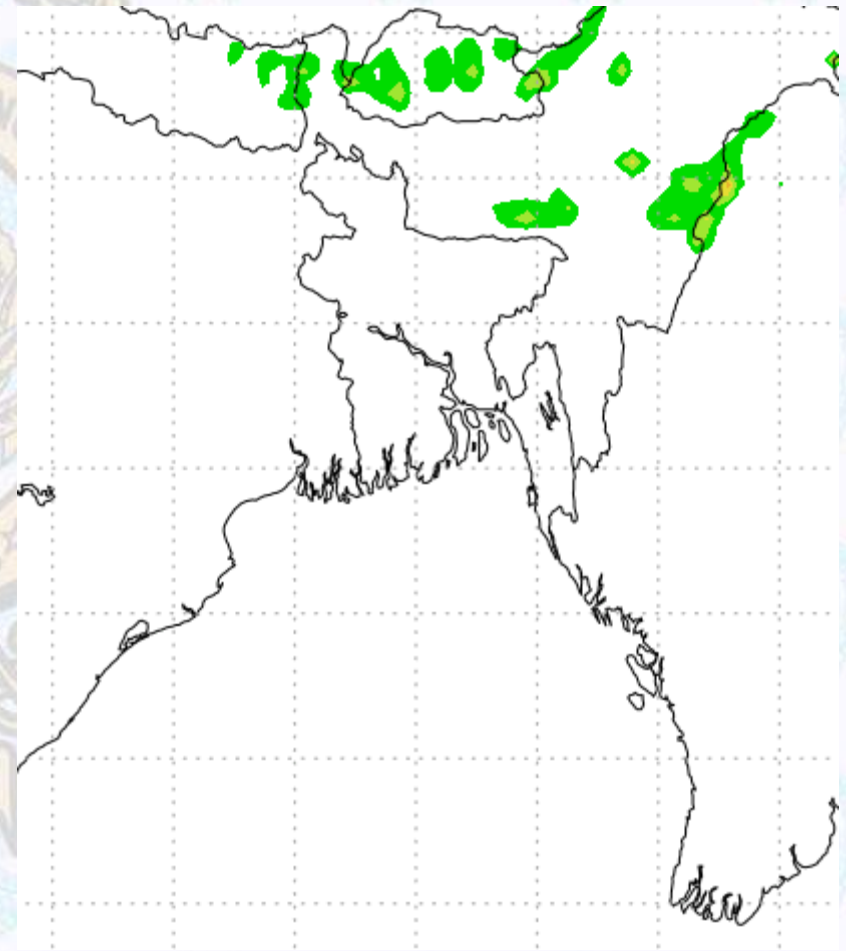
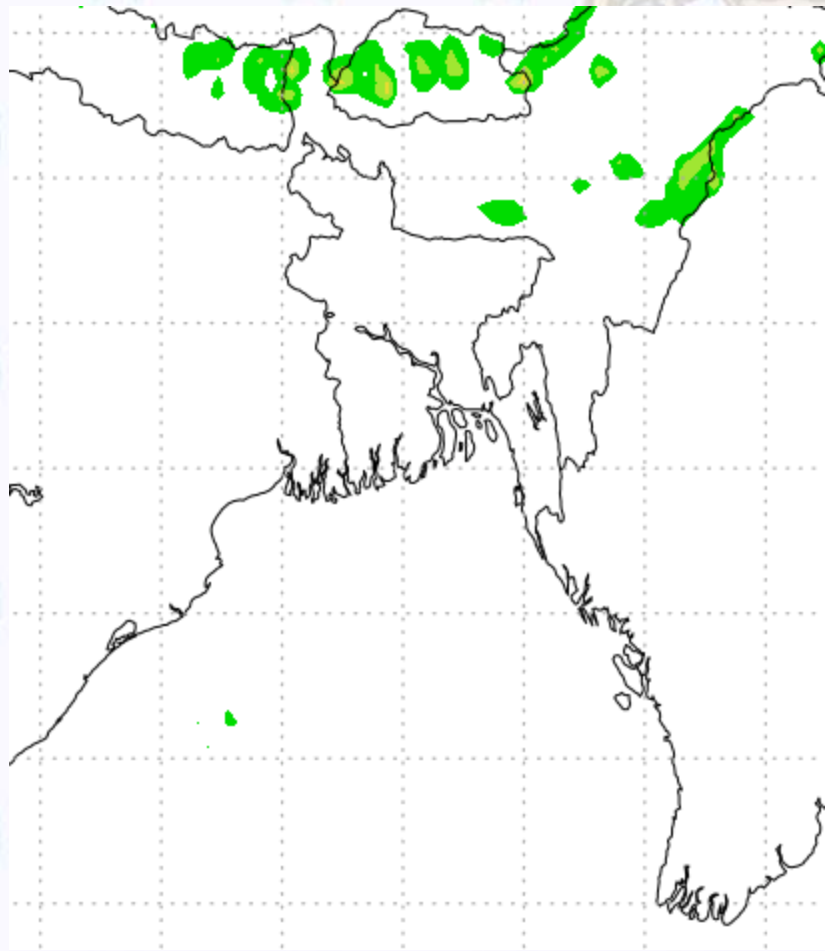
Ref (Slide 12-18): <http://www.weatheronline.co.uk/marine/weather?LEVEL>



Precipitation

Rain(mm) 26 & 27 Jan 20

Rain(mm) 27 & 28 Jan 20



Precipitation Scale (mm):





Tidal Information

KHAL NO. 10

COX'S BAZAR

HIRAN POINT

	Time	Height		Time	Height		Time	Height
26Jan 2020	0141	4.24		0603	0.36		0603	0.55
	0829	0.47		1138	2.90		1152	2.53
	1407	3.85		1811	0.32		1756	0.55
	2023	0.54		2357	3.33		-	-
27Jan 2020	Time	Height		Time	Height		Time	Height
	0209	4.30		0636	0.36		0003	2.83
	0857	0.44		1212	2.90		0631	0.54
	1435	3.92		1843	0.34		1222	2.54
	2052	0.53		-	-		1825	0.57
28Jan 2020	Time	Height		Time	Height		Time	Height
	0238	4.32		0031	3.28		0030	2.80
	0924	0.41		0707	0.38		0658	0.54
	1505	3.95		1246	2.85		1251	2.54
	2122	0.55		1914	0.38		1854	0.62