



WEATHER FORECAST FOR BN

22 - 25 JAN 2020



WEATHERFORECAST – DHAKA

22.01.2020

Hourly	2 PM	4 PM	8 PM	11 PM
Temp. / Dew Point	24 / 13	23 / 12	18 / 13	16 / 12
Wind	12 km/h WNW	10 km/h WNW	3 km/h NW	1 km/h NE
Humidity	52%	53%	70%	79%
Chance of Precip	1%	1%	3%	5%
Cloud Cover	21%	1%	1%	1%
Conditions	Sunny	Sunny	Clear	Clear
Sunrise Sunset	6: 43 AM 5: 38 PM			

Conditions

Pressure : 1018 hpa

Visibility : 3.22 km

Ref: <https://www.wunderground.com/weather/bd/dhaka>



WEATHER FORECAST – CHATTOGRAM

22.01.2020

Hourly	2 PM	4 PM	8 PM	11 PM
Temp. / Dew Point	25 / 11	24 / 12	19 / 13	17 / 12
Wind	12 km/h NW	13 km/h NW	8 km/h NNW	8 km/h N
Humidity	43%	49%	65%	74%
Chance of Precip.	1%	1%	2%	3%
Cloud Cover	20%	10%	1%	1%
Conditions	Sunny	Sunny	Clear	Clear
Sunrise Sunset	6: 35 AM 5: 34 PM			

Conditions

Pressure : 1017 hpa

Visibility : 16.02 Km

Ref: <https://www.wunderground.com/weather/bd/chittagong>



WEATHER FORECAST – KHULNA

22.01.2020

Hourly	2 PM	4 PM	8 PM	11 PM
Temp. / Dew Point	24 / 14	24 / 13	29 / 14	17 / 14
Wind	9 km/h NW	9 km/h NW	2 km/h NNW	2 km/h E
Humidity	51%	51%	72%	85%
Chance of Precip.	1%	1%	2%	4%
Cloud Cover	29%	14%	1%	1%
Conditions	Sunny	Sunny	Clear	Clear
Sunrise Sunset	6: 45 AM 5: 44 PM			

Conditions

Pressure : 1018 hpa

Visibility : 14.48 Km

Ref: <https://www.wunderground.com/weather/bd/khulna>



GENERAL WEATHER FORECAST – DHAKA

Description	23 Jan 2020	24 Jan 2020	25 Jan 2020
Temperature (C)	23 °C / 13 °C	23 °C / 11 °C	22 °C / 12 °C
Summary	Sunny	Sunny	Sunny
Sun Rise/Set	6h42m24s/17h38m06s	6h42m12s/17h38m42s	6h41m54s/17h39m24s
Day Length	10h55m42s	10h56m30s	10h57m30s
Moon Rise/ Set	5:19AM 4:14PM	6:11AM 5:09PM	6:59AM 6:04PM
Moon Phase/ illu	Waning Crescent, 1%	New Moon, 0%	New Moon, 0%
NauticalTwilight	0550,1829	0550,1830	0550,1830
Civil Twilight	0618,1802	0618,1802	0618,1803
Humidity	D : 68% N : 81%	D : 60% N : 74%	D : 62% N : 78%
Barometer (mb)	1016	1014	1015
Visibility	Good	Good	Good
Precip Chance	10%	10%	10%
Wind (mph)	11 km/h WSW	12 km/h W	8 km/h WNW

Ref: <https://weather.com/weather/5day//BGXX0003:1:BG>



GENERAL WEATHER FORECAST- CHATTOGRAM

Description	23 Jan 2020	24 Jan 2020	25 Jan 2020
Temperature (C)	26 °C/ 15 °C	24 °C/ 12 °C	23 °C/ 12 °C
Summary	Sunny	Sunny	Sunny
Sun Rise/Set	6h34m06s/17h34m54s	6h33m54s/17h35m30s	6h33m36s/17h36m06s
Day Length	11h00m48s	11h01m36s	11h02m30s
Moon Rise/ Set	5:09AM 4:11PM	6:02AM 5:06PM	6:50AM 6:01PM
Moon Phase/ illu	Waning Crescent, 1%	New Moon, 0%	New Moon, 0%
Nautical Twilight	0543, 1825	0542, 1826	0542, 1827
Civil Twilight	0610.,1758	0610.,1759	0609.,1759
Humidity	D : 61% N : 85%	D : 69% N : 80%	D : 58% N : 82%
Barometer (mb)	1016	1015	1015
Visibility	Good	Good	Good
Precip Chance	1%	10%	1%
Wind (mph)	10 km/h NNW	10 km/h NW	11 km/h NW

Ref: <https://weather.com/weather/5day//BGXX0002:1:BG>



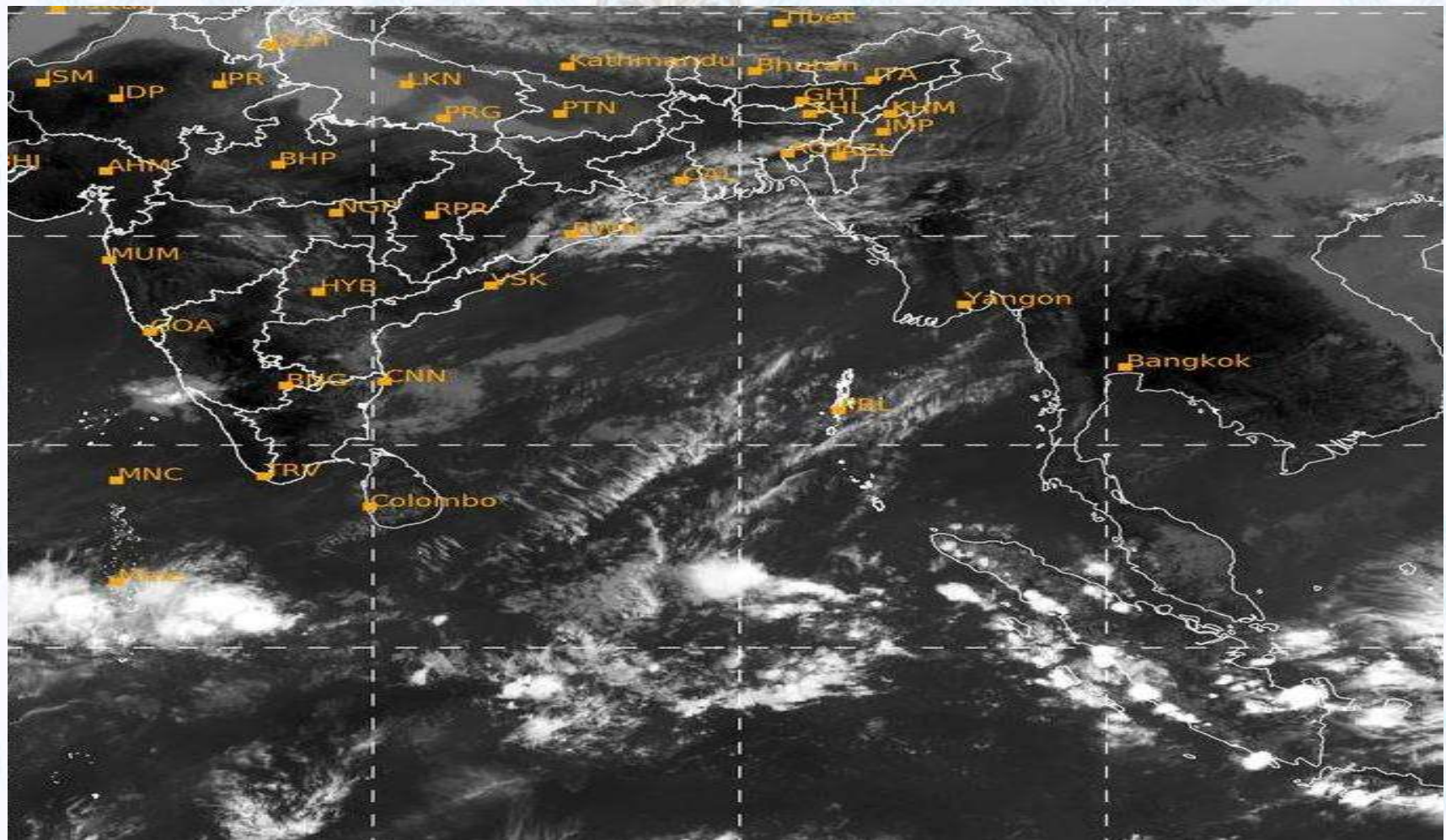
GENERAL WEATHER FORECAST – KHULNA

Description	23 Jan 2020	24 Jan 2020	25 Jan 2020
Temperature(C)	24 °C/ 12 °C	23 °C/ 9 °C	22 °C/ 10 °C
Summary	Sunny	Sunny	Sunny
Sun Rise/Set	6h44m06s/17h43m06s	6h43m54s/17h43m48s	6h43m36s/17h44m24s
Day Length	10h59m00s	10h59m54s	11h00m48s
Moon Rise/Set	5:20AM 4:21PM	6:13AM 5:16PM	7:01AM 6:11PM
Moon Phase/illu	Waning Crescent, 1%	New Moon, 0%	New Moon, 0%
Nautical Twilight	0552, 1834	0552, 1834	0552, 1835
Civil Twilight	0620.,1807	0619.,1807	0619.,1808
Humidity	D : 69% N : 81%	D : 54% N : 78%	D : 62% N : 80%
Barometer (mb)	1016	1014	1015
Visibility	Good	Good	Good
Precip Chance	10%	1%	10%
Wind (mph)	11 km/h WNW	13 km/h WNW	10 km/h NW

Ref: <https://weather.com/weather/5day//BGXX0005:1:BG>



SATELLITE VIEW OF BAY OF BENGAL

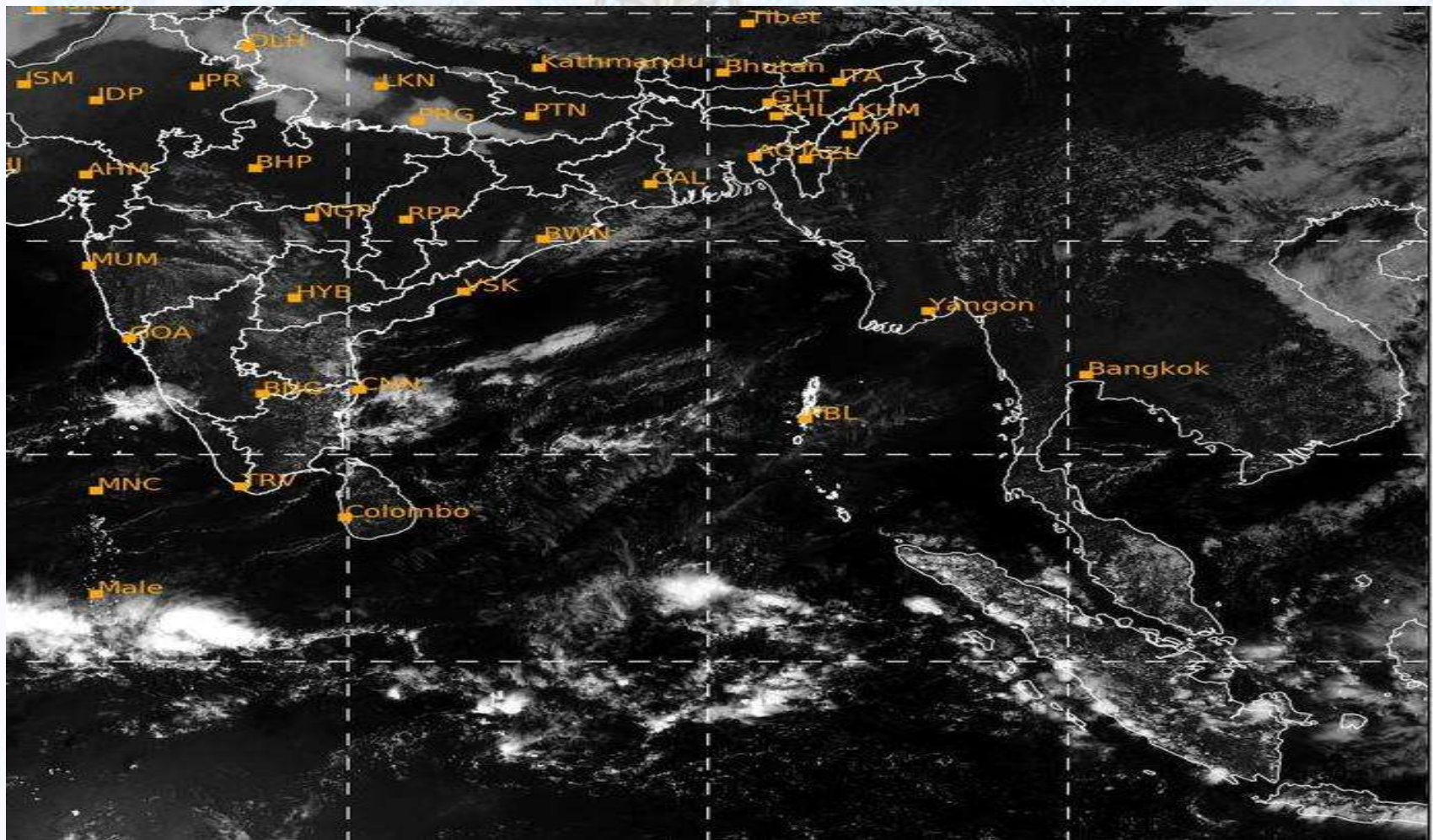


22/01/2020, 11:00 UTC MATSAT-IR

Ref: <http://satellite.imd.gov.in/insat.htm>



SATELLITE VIEW OF BAY OF BENGAL



22/01/2020, 11:00 MATSAT-VIS

Ref: <http://satellite.imd.gov.in/insat.htm>



Fleet Forecast Sea Area C-90 (Valid for 12 Hrs Commencing 1000 UTC of 22.01.2020)

Part One	NO STORM WARNING.	
Part Two	SEASONAL LOW LIES OVER SOUTH BAY.	
Part Three	Weather	TEMPORARY PARTLY CLOUDY OVER AREA C-90.
	Wind	NORTH/ NORTH-WESTERLY, 08-12 KTS.
	Visibility	02-04 KMS REDUCING TO 1000M OR LESS IN MIST/FOG.
	Outlook	FOR SUBSEQUENT 12 HOURS: LITTLE CHANGE.
	MSL Pressure	AT =22,0000 UTC. CHATTOGRAM =1017 HPA



Inland River Port Warning (VALID TILL 06 PM OF 22.01.2020)

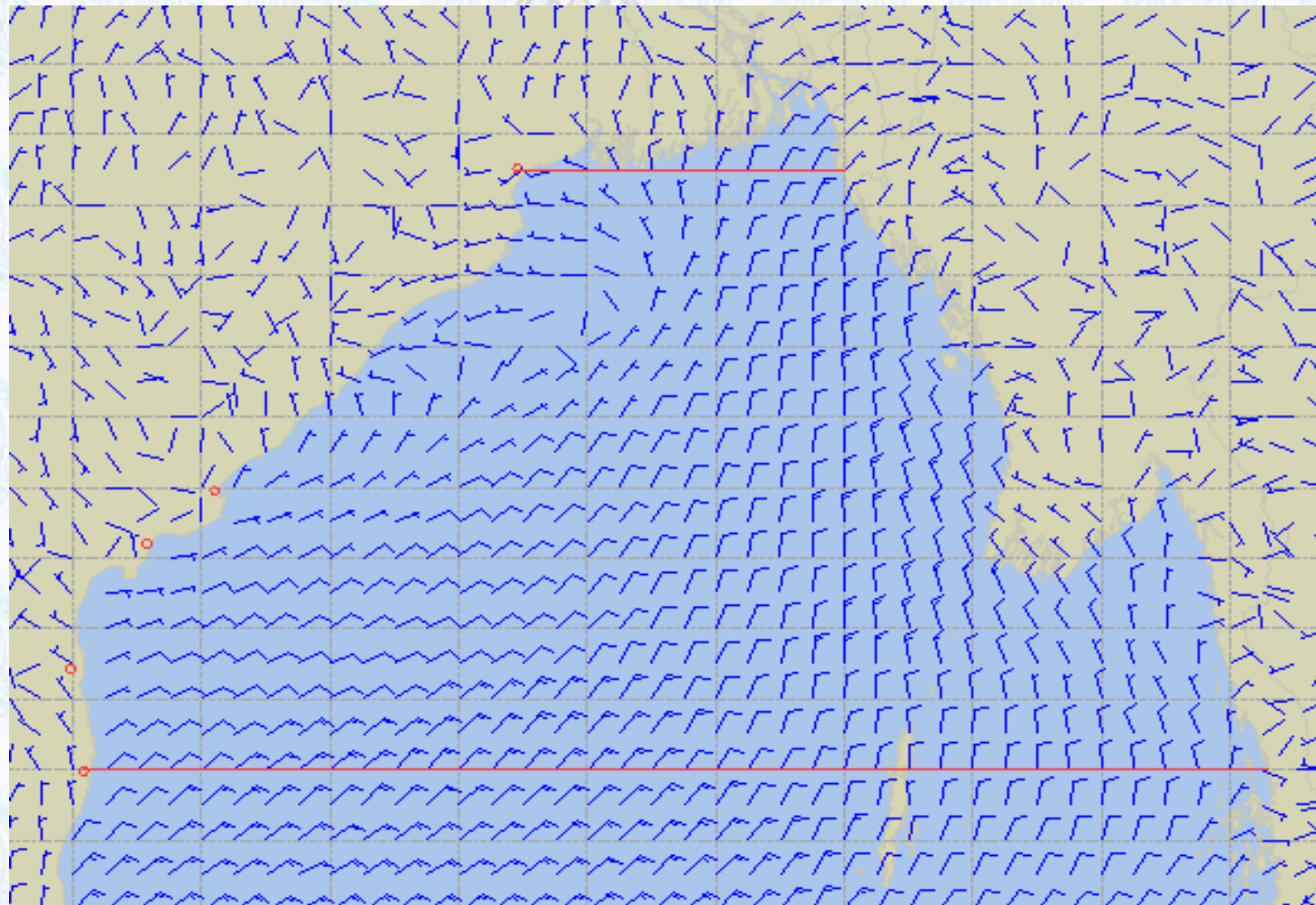
THERE IS NO INLAND RIVERPORTS WARNING & NO SIGNAL IS TO BE HOISTED.



Ref: <http://www.bmd.gov.bd/?/home>



Surface Wind Forecast- 23 Jan- 2020



Legend:



Calm
Winds



5 Knots



10 Knots



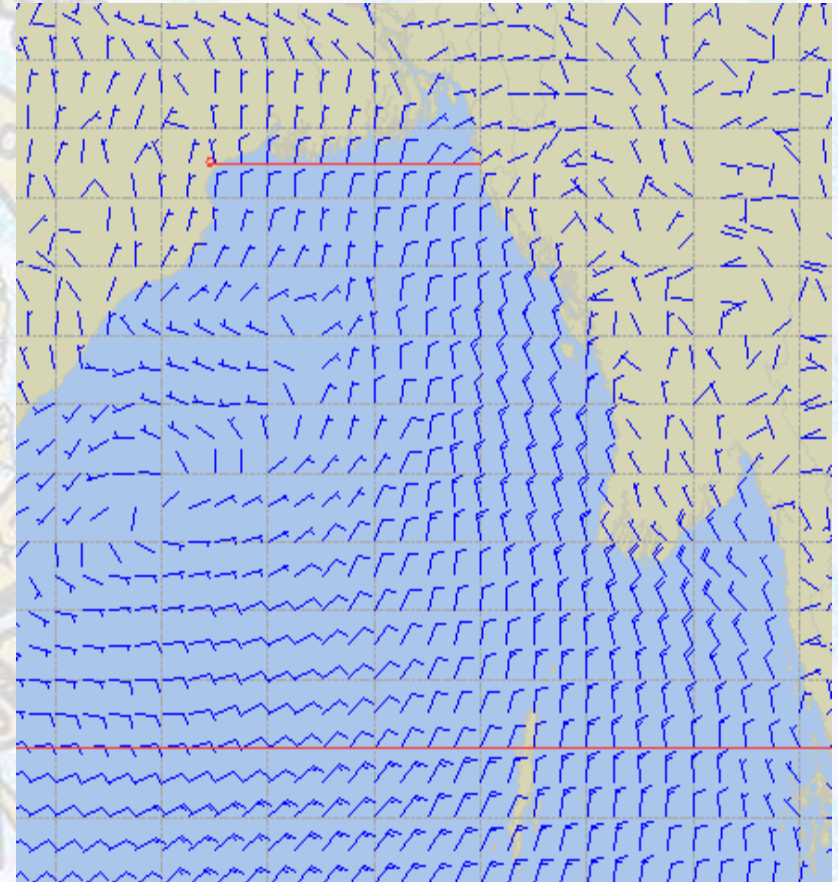
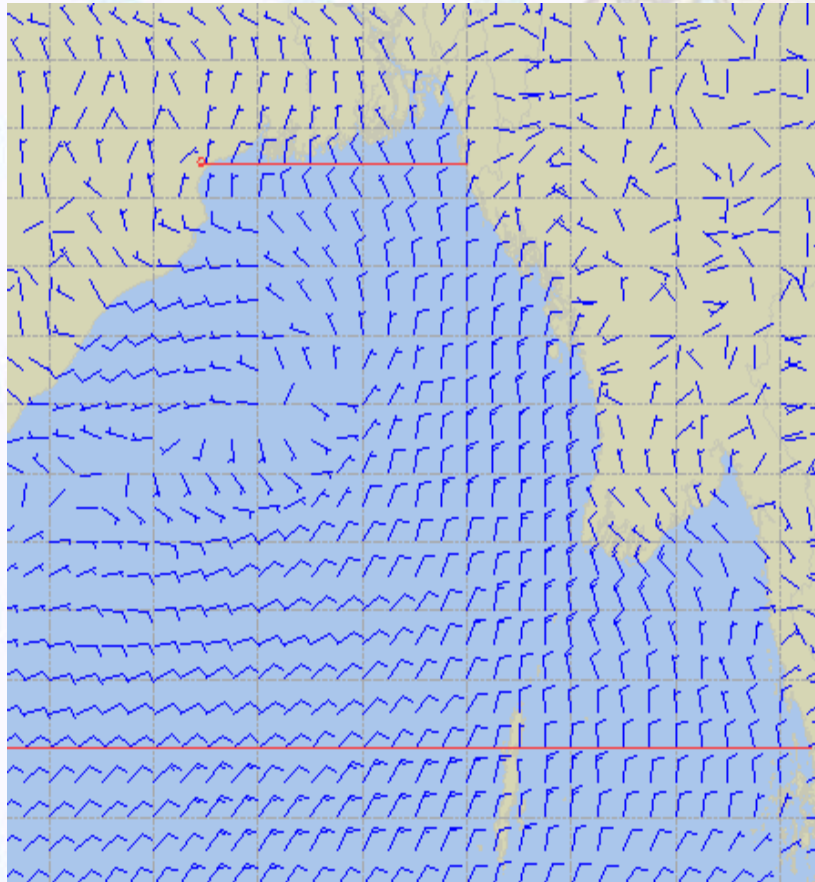
60 Knots



Surface Wind Forecast – 24 & 25 Jan - 2020

24 Jan 2020 Friday

25 Jan 2020 Saturday



Legend:



Calm
Winds



5 Knots



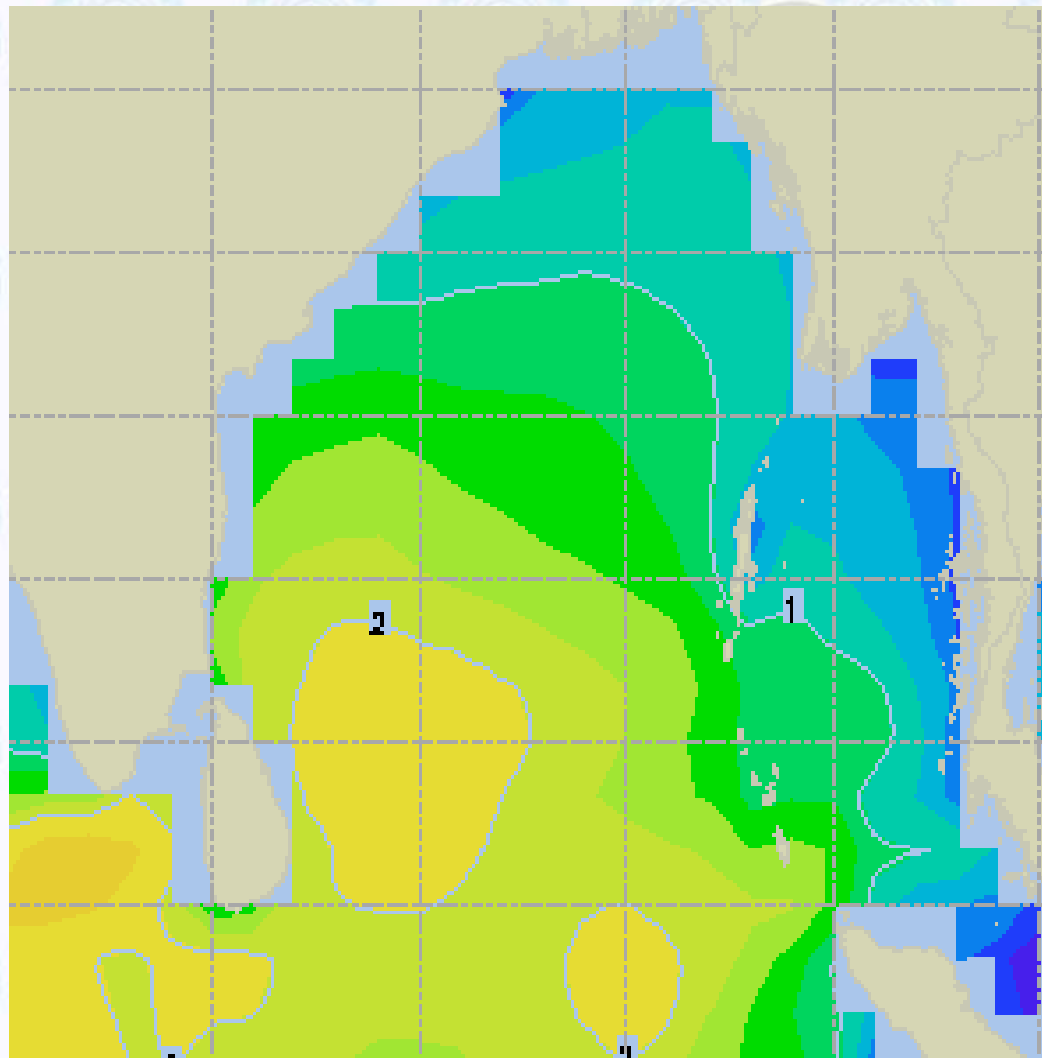
10 Knots



60 Knots



Sea State Forecast- 23 Jan - 2020



Sea State	Ht (m)
0	0-0.1
1	0-0.1
2	0.1-0.5
3	0.5-1.25
4	1.25-2.5
5	2.5-4.0
6	4-6
7	6-9
8	9-14
9	Over 14

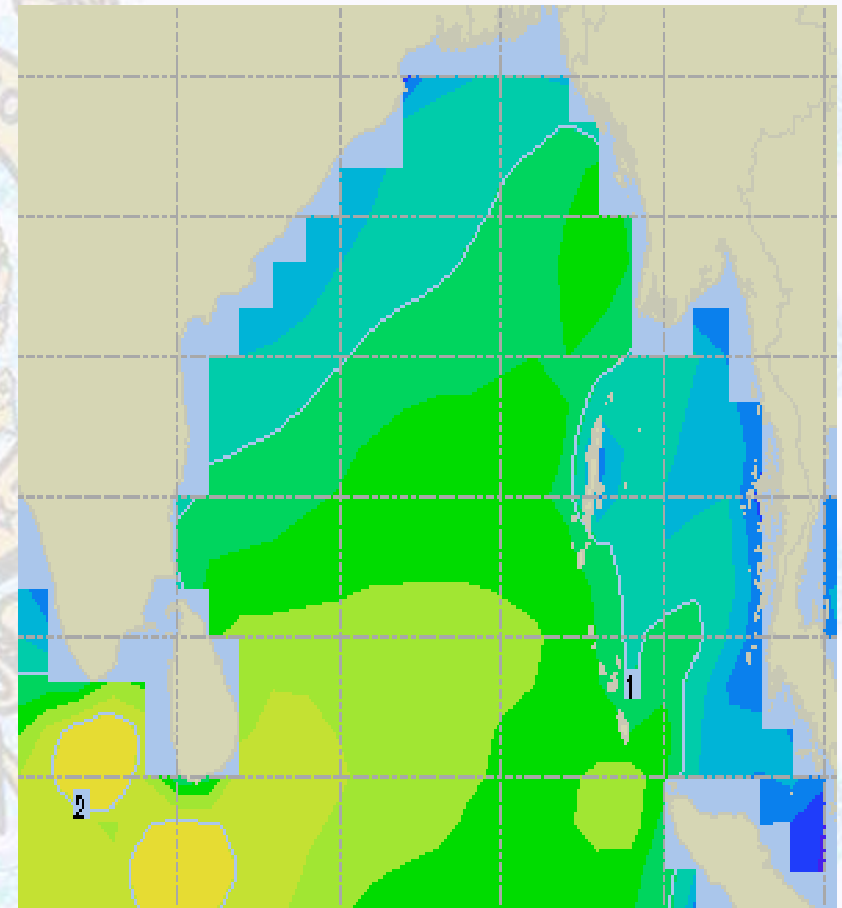
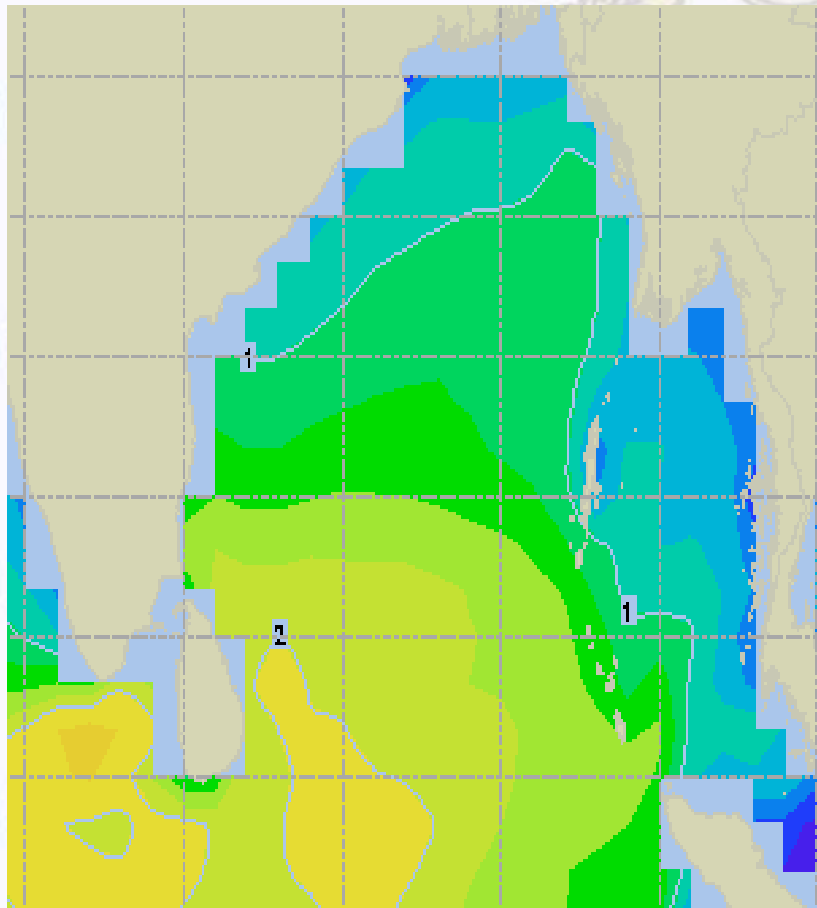




Sea State Forecast – 24 & 25 Jan - 2020

24 Jan 2020 Friday

25 Jan 2020 Saturday

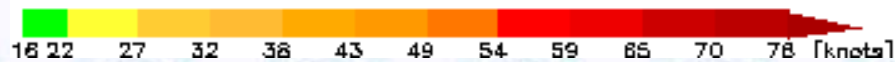
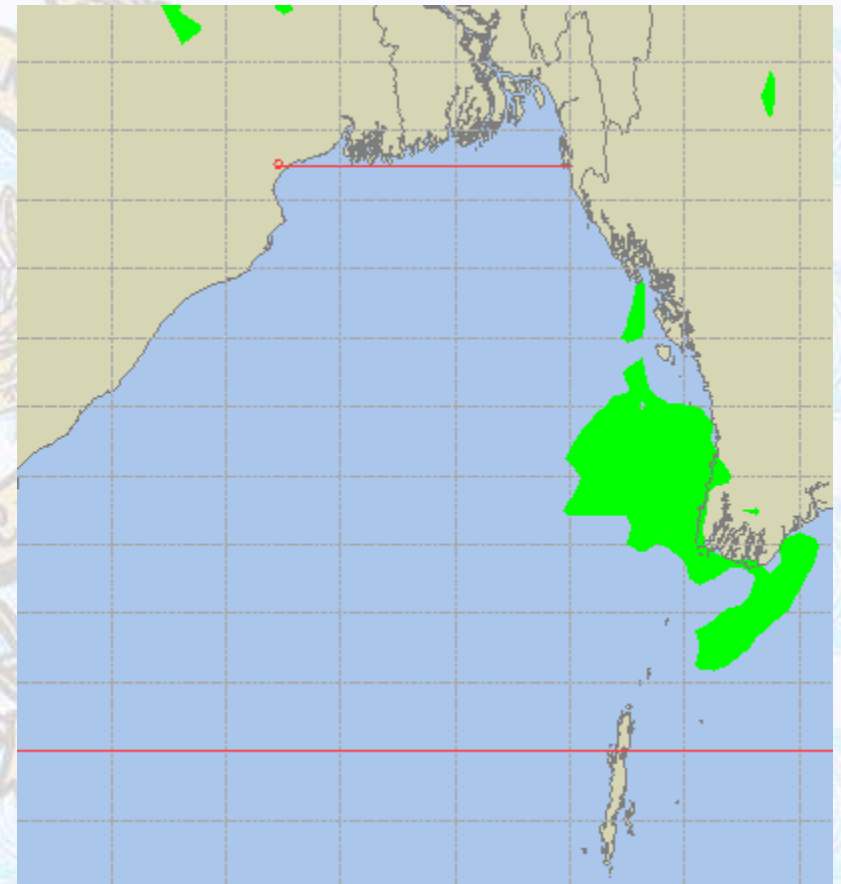
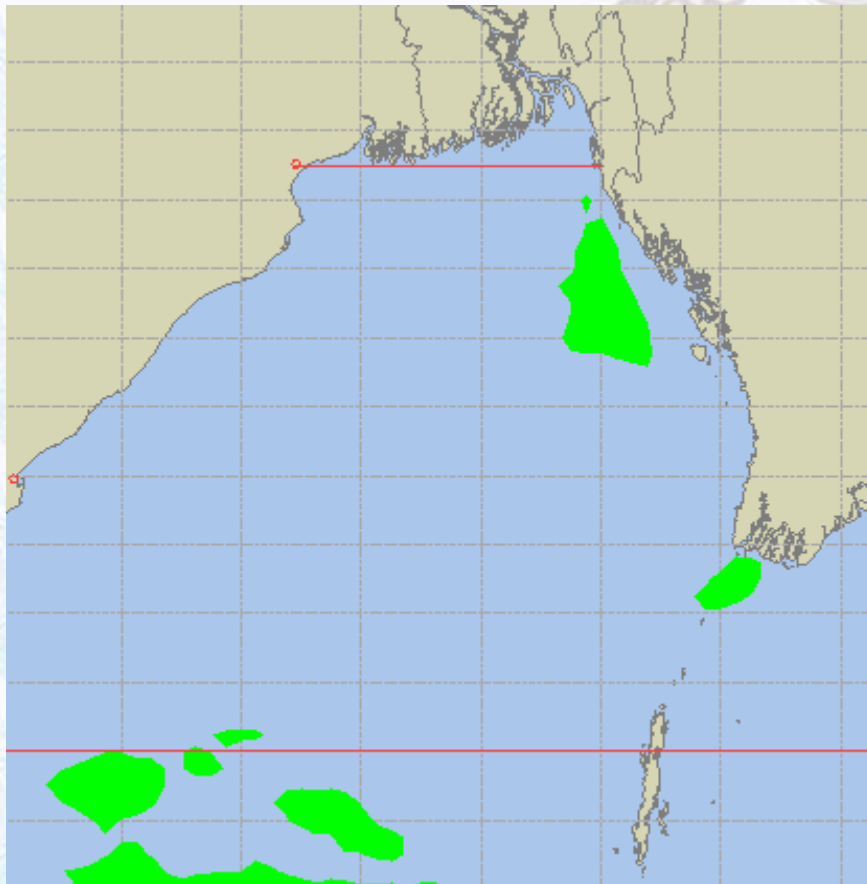




Peak Gusting Possibilities – 23 & 24 Jan - 2020

23 Jan 2020 Thursday

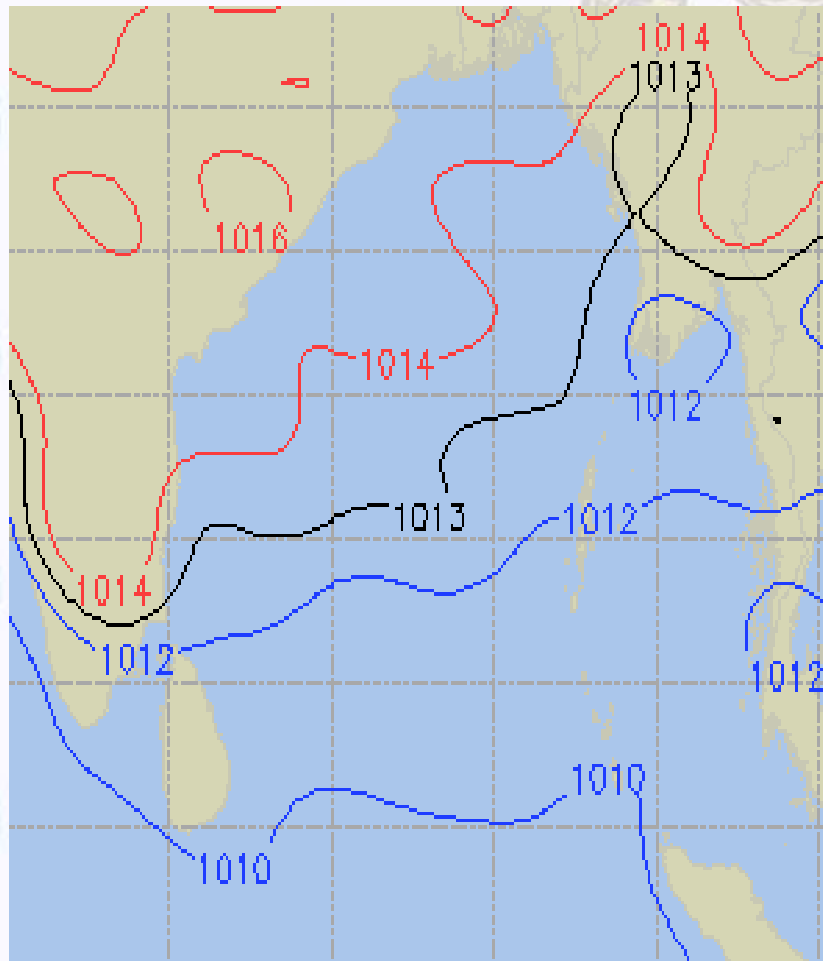
24 Jan 2020 Friday



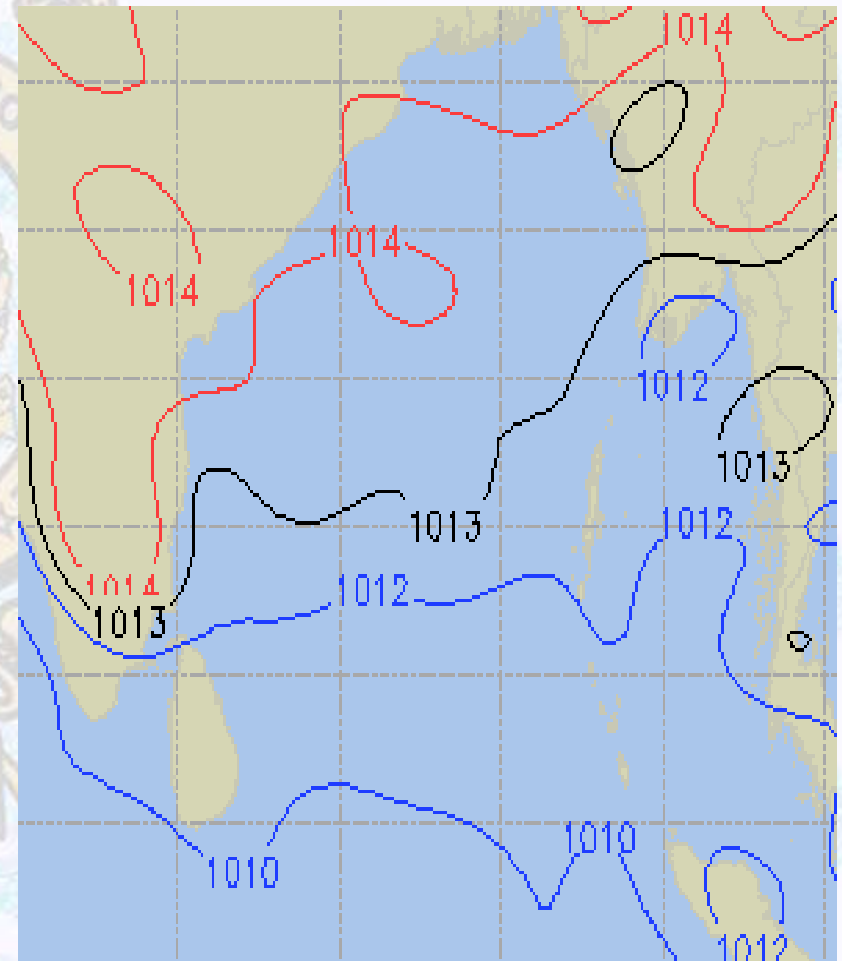


Surface Pressure forecast – 23 & 24 Jan - 2020

23 Jan 2020 Thursday



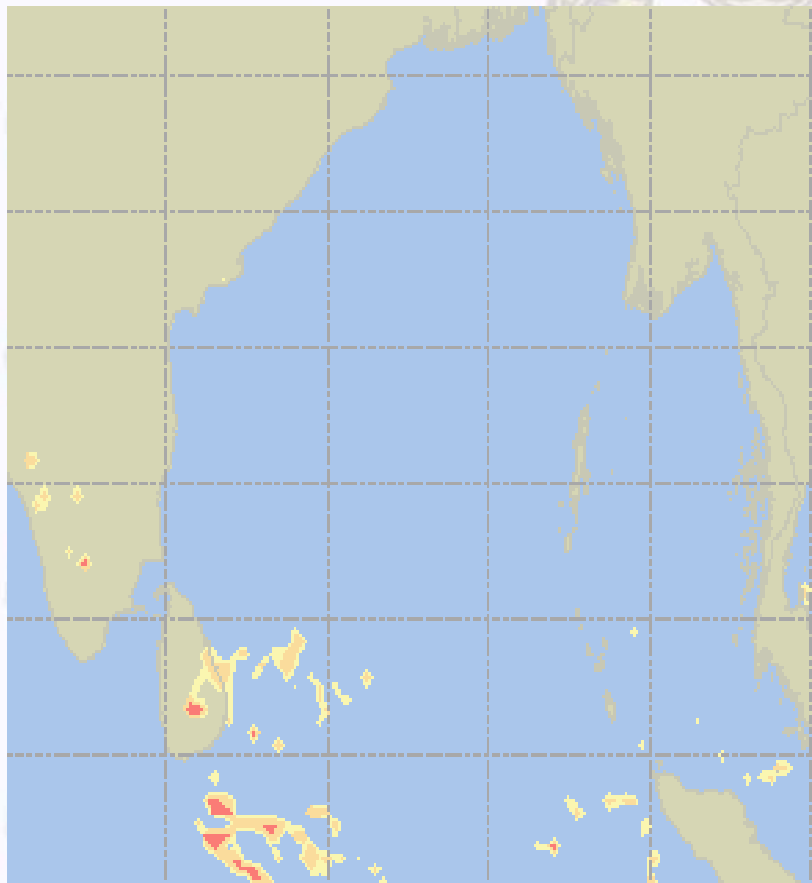
24 Jan 2020 Friday



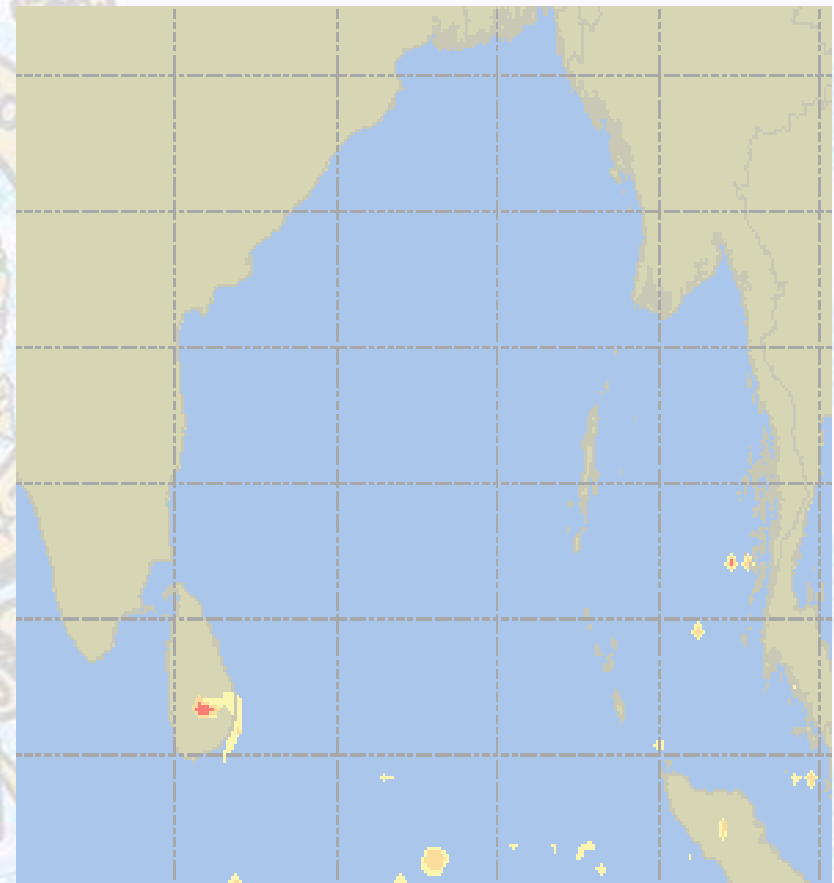


Visibility at Sea Forecast – 23 & 24 Jan - 2020

23 Jan 2020 Thursday



24 Jan 2020 Friday



Visibility Scale:



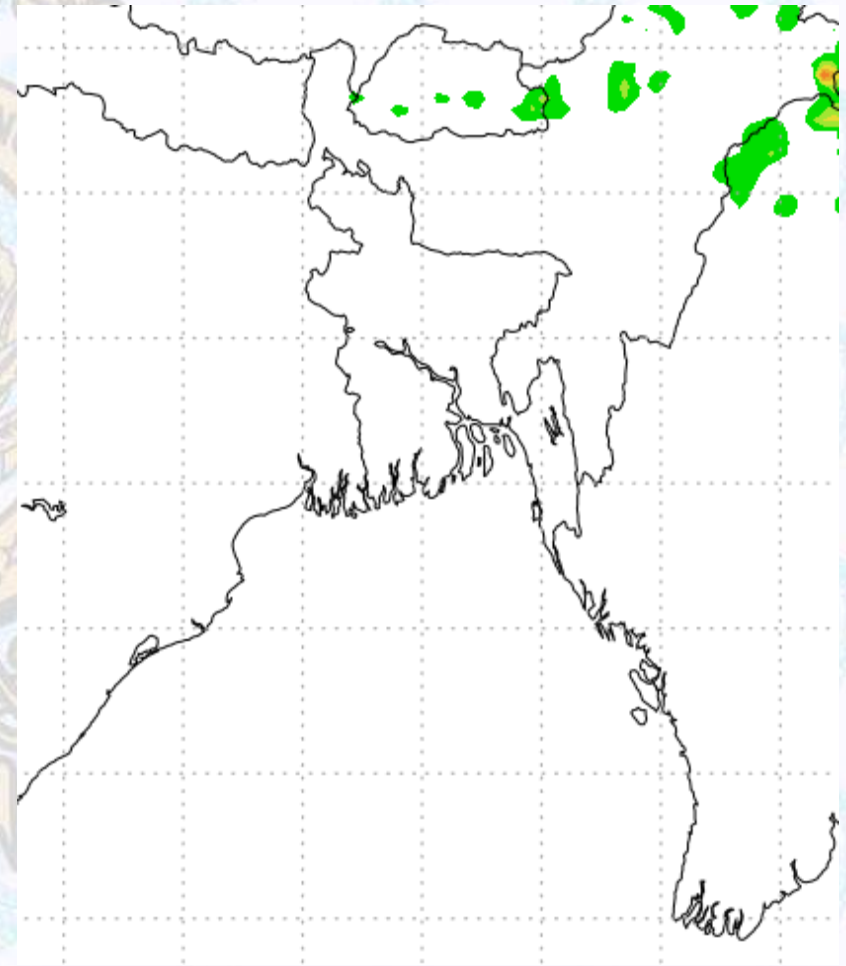
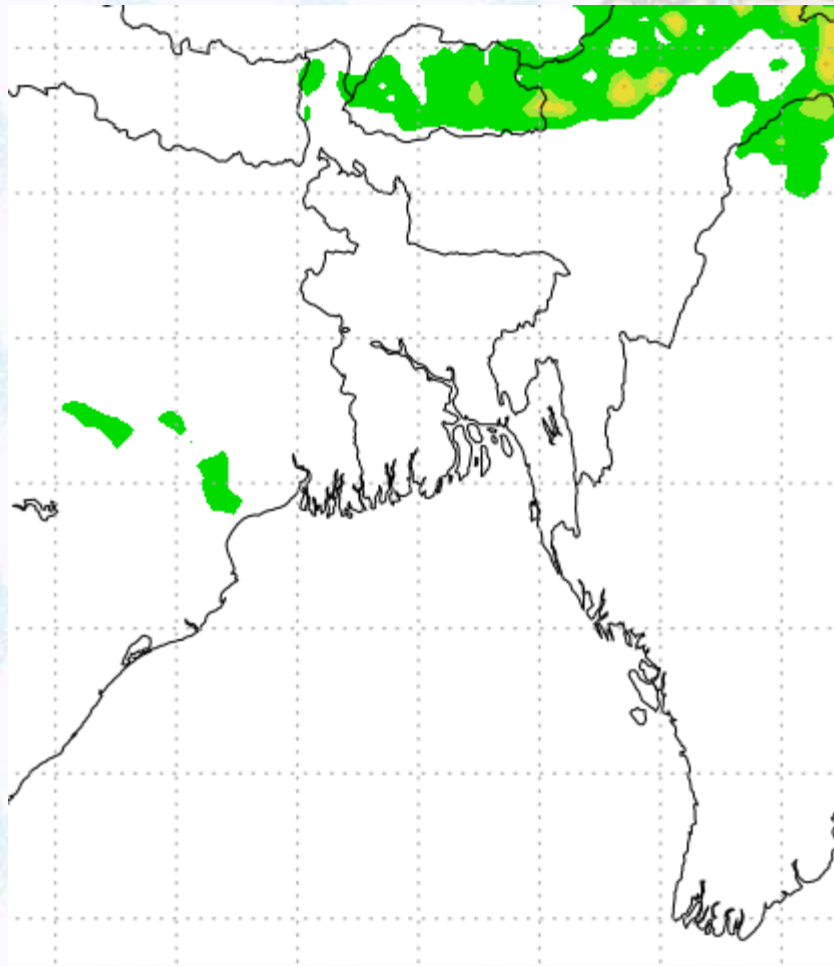
Ref (Slide 12-18): <http://www.weatheronline.co.uk/marine/weather?LEVEL>



Precipitation

Rain(mm) 23 & 24 Jan 20

Rain(mm) 24 & 25 Jan 20



Precipitation Scale (mm):





Tidal Information

KHAL NO. 10

COX'S BAZAR

HIRAN POINT

	Time	Height		Time	Height		Time	Height
23Jan 2020	0001	4.02		0401	0.56		0413	0.76
	0639	0.56		0939	2.63		1006	2.35
	1232	3.57		1613	0.45		1608	0.65
	1839	0.64		2201	3.13		2225	2.77
24Jan 2020	Time	Height		Time	Height		Time	Height
	0040	4.09		0314	0.50		0455	0.65
	0721	0.51		0935	3.30		1046	2.43
	1308	3.67		1703	0.70		1649	0.58
	1918	0.60		2144	2.90		2302	2.82
25Jan 2020	Time	Height		Time	Height		Time	Height
	0113	4.17		0527	0.39		0531	0.58
	0757	0.49		101	2.86		1121	2.49
	1339	3.76		1736	0.32		1724	0.55
	1952	0.57		2321	3.32		2334	2.84