



WEATHER FORECAST FOR BN

21 - 24 JAN 2020





WEATHERFORECAST – DHAKA

21.01.2020

Hourly	2 PM	4 PM	8 PM	11 PM
Temp. / Dew Point	23 / 13	22 / 12	18 / 13	16 / 13
Wind	10 km/h NW	10 km/h WNW	4 km/h WNW	4 km/h NW
Humidity	53%	52%	70%	80%
Chance of Precip	1%	1%	3%	5%
Cloud Cover	33%	33%	49%	32%
Conditions	Partly Cloudy	Partly Cloudy	Partly Cloudy	Partly Cloudy
Sunrise Sunset	6: 43 AM 5: 37 PM			

Conditions

Pressure : 1018 hpa

Visibility : 11.27 km

Ref: <https://www.wunderground.com/weather/bd/dhaka>



WEATHER FORECAST – CHATTOGRAM

21.01.2020

Hourly	2 PM	4 PM	8 PM	11 PM
Temp. / Dew Point	24 / 12	24 / 12	20 / 13	18 / 13
Wind	11 km/h NW	11 km/h NW	9 km/h NNW	10 km/h N
Humidity	46%	47%	63%	74%
Chance of Precip.	1%	1%	1%	3%
Cloud Cover	24%	18%	18%	14%
Conditions	Sunny	Sunny	Clear	Clear
Sunrise Sunset	6: 35 AM 5: 34 PM			

Conditions

Pressure : 1017 hpa

Visibility : 3.54 Km

Ref: <https://www.wunderground.com/weather/bd/chittagong>



WEATHER FORECAST – KHULNA

21.01.2020

Hourly	2 PM	4 PM	8 PM	11 PM
Temp. / Dew Point	23 / 12	23 / 12	18 / 13	16 / 13
Wind	10 km/h NNW	10 m/h NNW	5 km/h N	43km/h NE
Humidity	50%	50%	73%	81%
Chance of Precip.	1%	1%	2%	4%
Cloud Cover	20%	18%	14%	6%
Conditions	Sunny	Sunny	Clear	Clear
Sunrise Sunset	6: 45 AM 5: 43 PM			

Conditions

Pressure : 103 hpa
Visibility : 14.48 Km

Ref: <https://www.wunderground.com/weather/bd/khulna>



GENERAL WEATHER FORECAST – DHAKA

Description	22 Jan 2020	23 Jan 2020	24 Jan 2020
Temperature (C)	24 °C / 14 °C	24 °C / 13 °C	23 °C / 11 °C
Summary	Sunny	Sunny	Sunny
Sun Rise/Set	6h42m42s/17h37m24s	6h42m24s/17h38m06s	6h42m12s/17h38m42s
Day Length	10h54m42s	10h55m42s	10h56m30s
Moon Rise/ Set	4:22AM 3:21PM	5:19AM 4:14PM	6:11AM 5:09PM
Moon Phase/ illu	Waning Crescent, 5%	Waning Crescent, 1%	New Moon, 0%
NauticalTwilight	0550,1829	0550,1829	0550,1830
Civil Twilight	0618,1801	0618,1802	0618,1802
Humidity	D : 65% N : 77%	D : 67% N : 78%	D : 60% N : 74%
Barometer (mb)	1018	1015	1014
Visibility	Good	Good	Good
Precip Chance	10%	10%	10%
Wind (mph)	10 km/h NW	11 km/h WSW	11 km/h WNW

Ref: <https://weather.com/weather/5day//BGXX0003:1:BG>



GENERAL WEATHER FORECAST– CHATTOGRAM

Description	22 Jan 2020	23 Jan 2020	24 Jan 2020
Temperature (C)	25 °C/ 14 °C	26 °C/ 15 °C	24 °C/ 13 °C
Summary	Sunny	Sunny	Sunny
Sun Rise/Set	6h34m24s/17h34m18s	6h34m06s/17h34m54s	6h34m54s/17h35m30s
Day Length	10h59m54s	11h00m48s	11h01m36s
Moon Rise/ Set	4:13AM 3:18PM	5:09AM 4:11PM	6:02AM 5:06PM
Moon Phase/ illu	Waning Crescent, 5%	Waning Crescent, 1%	New Moon, 0%
Nautical Twilight	0543, 1825	0543, 1825	0542, 1826
Civil Twilight	0610.,1757	0610.,1758	0610.,1759
Humidity	D : 60% N : 77%	D : 61% N : 84%	D : 69% N : 84%
Barometer (mb)	1018	1016	1015
Visibility	Good	Good	Good
Precip Chance	10%	1%	10%
Wind (mph)	12 km/h NNW	10 km/h NNW	11 km/h NW

Ref: <https://weather.com/weather/5day//BGXX0002:1:BG>



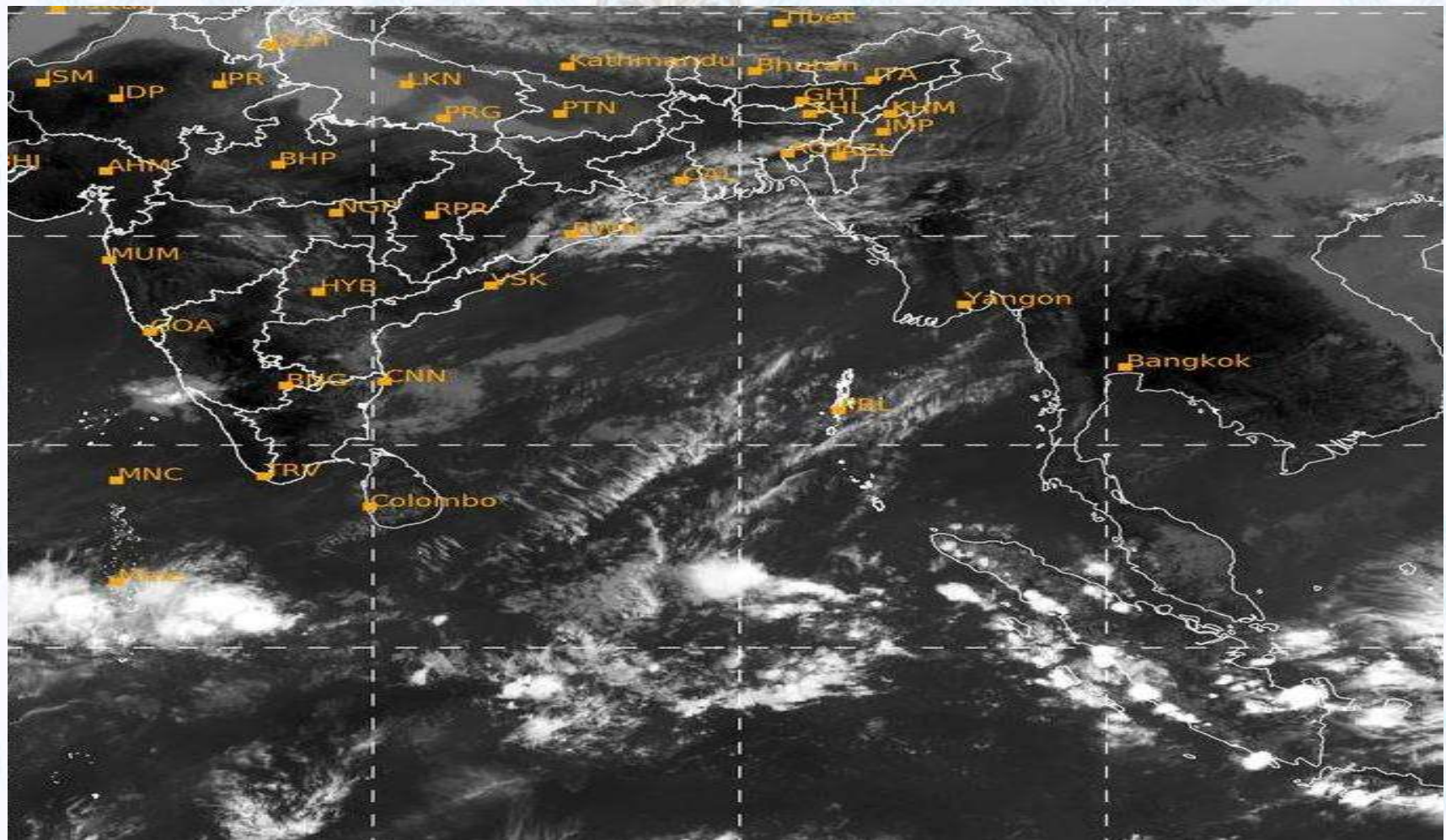
GENERAL WEATHER FORECAST – KHULNA

Description	22 Jan 2020	23 Jan 2020	24 Jan 2020
Temperature(C)	25 °C/ 13 °C	25 °C/ 12 °C	23 °C/ 10 °C
Summary	Sunny	Sunny	Sunny
Sun Rise/Set	6h44m24s/17h42m30s	6h44m06s/17h43m06s	6h43m54s/17h43m48s
Day Length	10h58m06s	10h59m00s	10h59m54s
Moon Rise/Set	4:24AM 3:28PM	5:20AM 4:21PM	6:13AM 5:16PM
Moon Phase/illu	Waning Crescent, 5%	Waning Crescent, 1%	New Moon, 0%
Nautical Twilight	0552, 1833	0552, 1834	0552, 1834
Civil Twilight	0620.,1806	0620.,1807	0619.,1807
Humidity	D : 66% N : 82%	D : 68% N : 79%	D : 56% N : 78%
Barometer (mb)	1018	1015	1014
Visibility	Good	Good	Good
Precip Chance	10%	10%	1%
Wind (mph)	9 km/h NNW	11 km/h WNW	12 km/h WNW

Ref: <https://weather.com/weather/5day//BGXX0005:1:BG>



SATELLITE VIEW OF BAY OF BENGAL

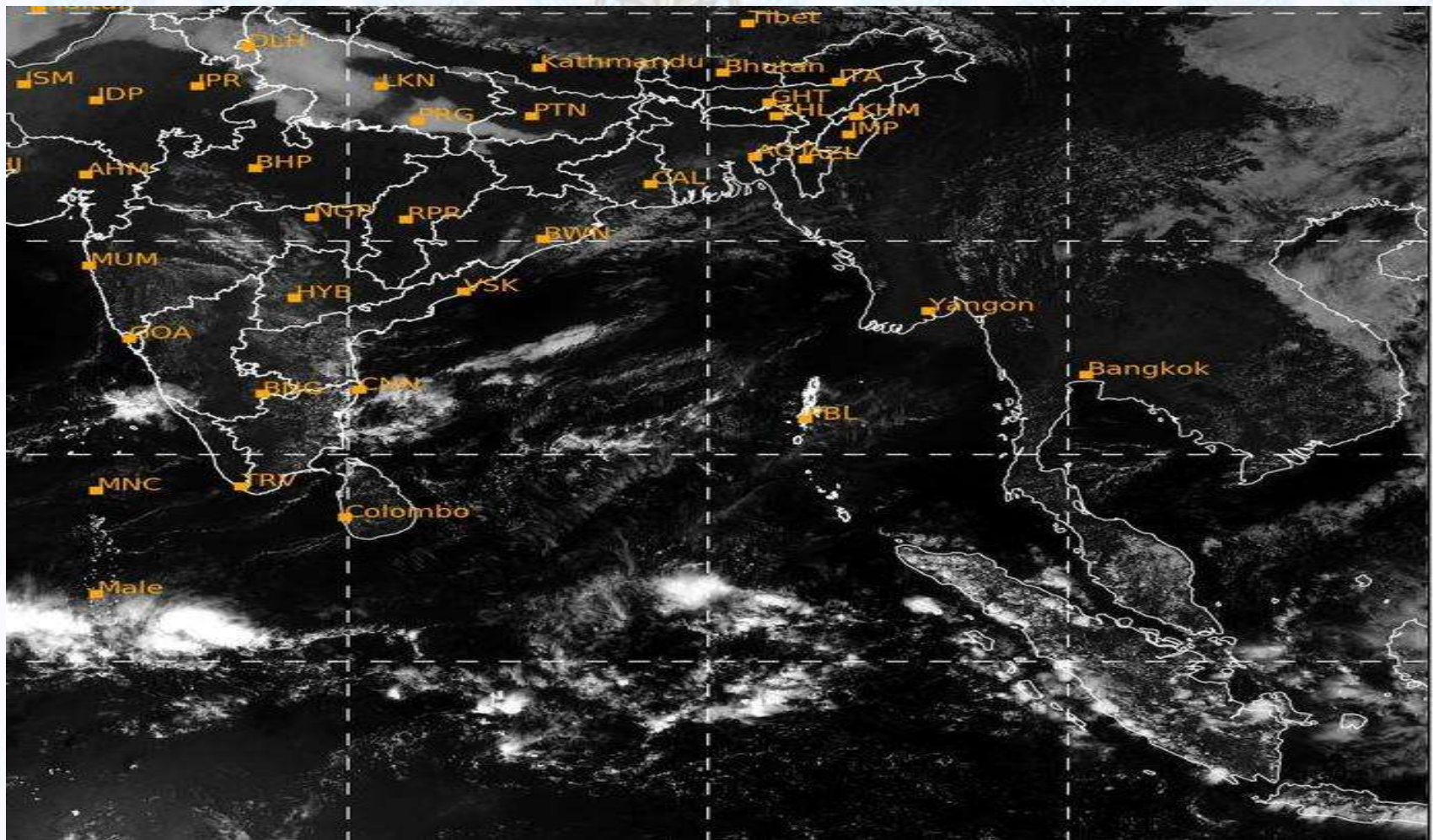


21/01/2020, 11:00 UTC MATSAT-IR

Ref: <http://satellite.imd.gov.in/insat.htm>



SATELLITE VIEW OF BAY OF BENGAL



21/01/2020, 11:00 MATSAT-VIS

Ref: <http://satellite.imd.gov.in/insat.htm>



Fleet Forecast Sea Area C-90 (Valid for 12 Hrs Commencing 1000 UTC of 21.01.2020)

Part One	NO STORM WARNING.	
Part Two	SEASONAL LOW LIES OVER SOUTH BAY.	
Part Three	Weather	SEASONAL OVER AREA C-90.
	Wind	NORTH/NORTH-EASTERLY, 08-12 KTS.
	Visibility	03-05 KMS, REDUCING TO 1000 M OR LESS IN FOG.
	Outlook	FOR SUBSEQUENT 12 HOURS: LITTLE CHANGE.
	MSL Pressure	AT =21,0000 UTC. CHATTOGRAM =1017 HPA



Inland River Port Warning (VALID TILL 06 PM OF 21.01.2020)

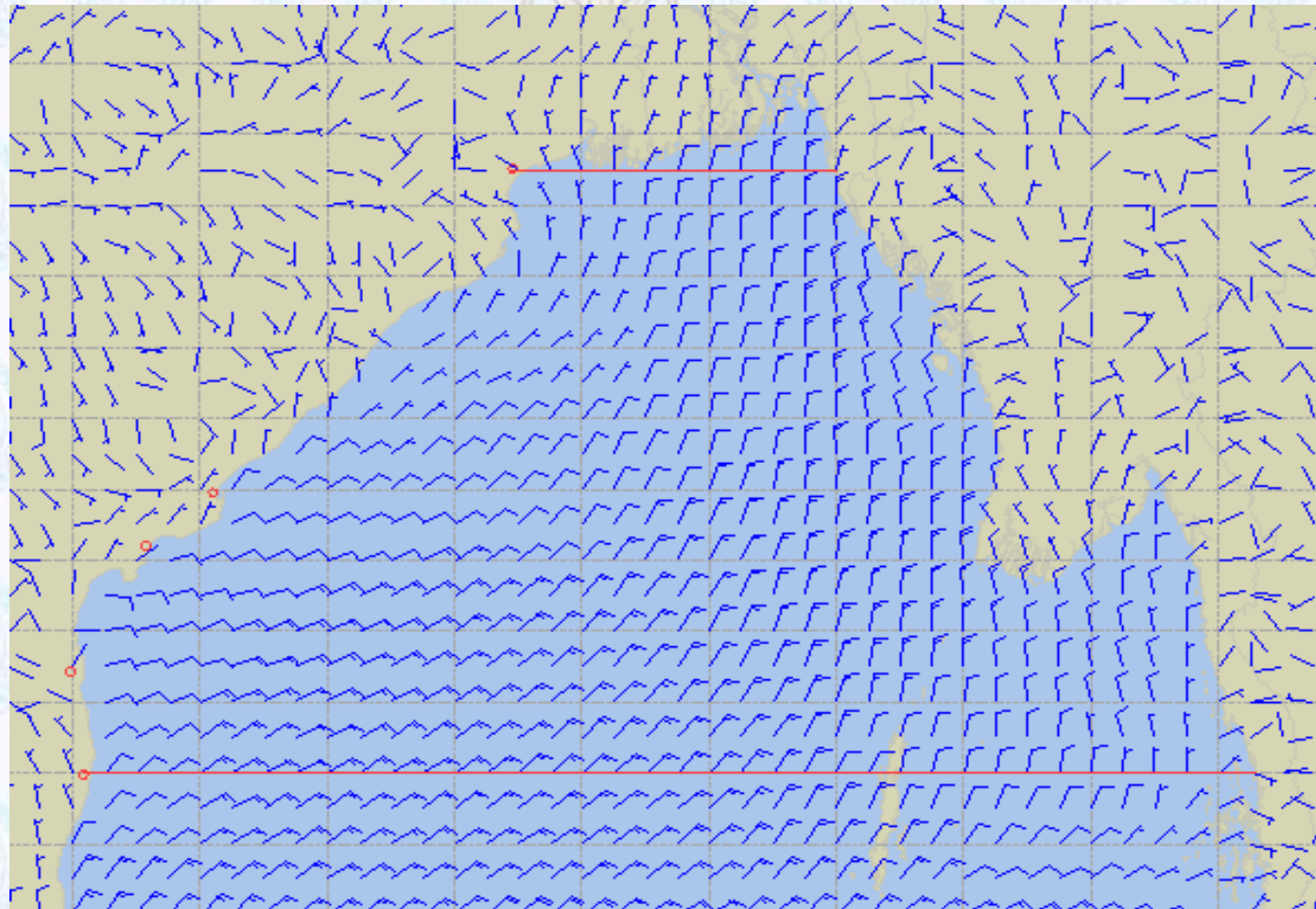
THERE IS NO INLAND RIVERPORTS WARNING & NO SIGNAL IS TO BE HOISTED.



Ref: <http://www.bmd.gov.bd/?/home>



Surface Wind Forecast- 22 Jan- 2020



Legend:



**Calm
Winds**



5 Knots



10 Knots



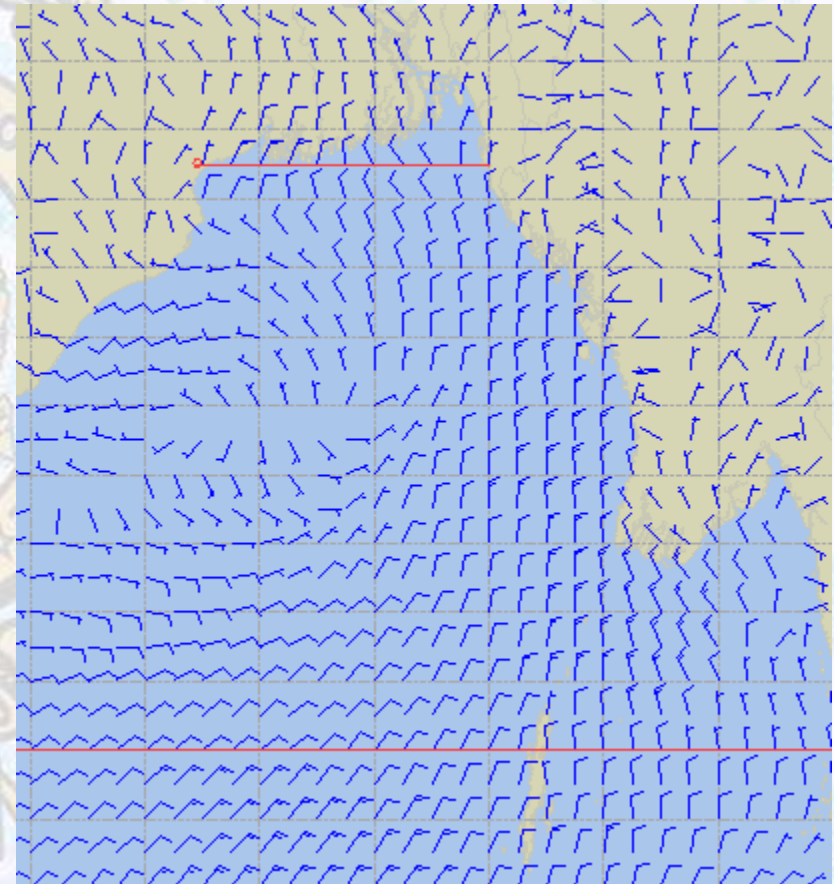
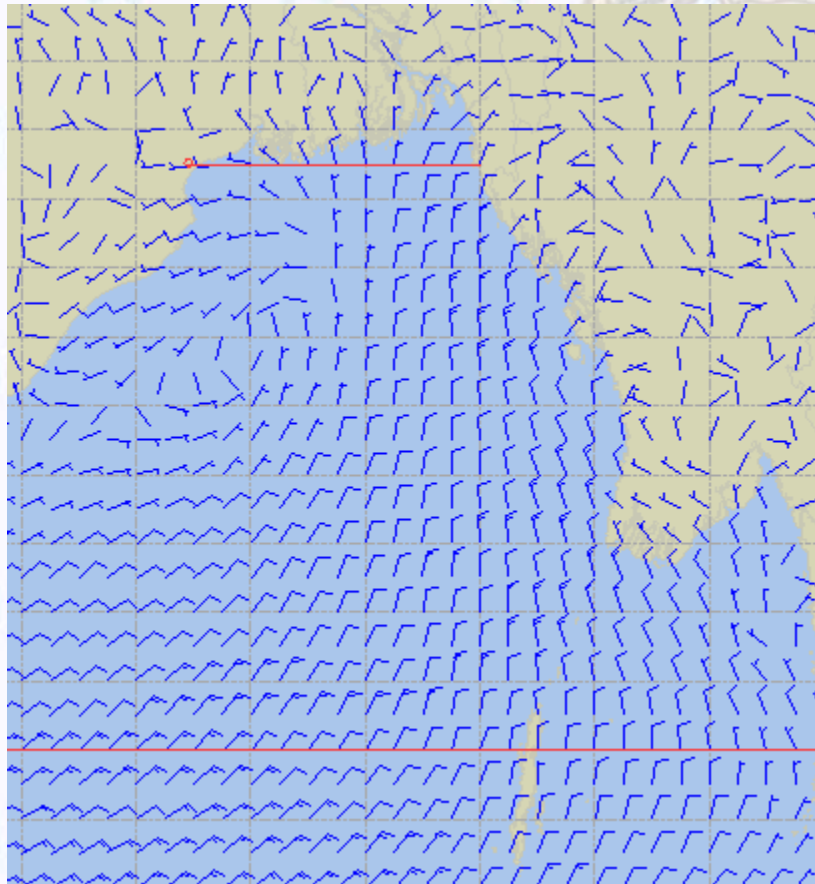
60 Knots



Surface Wind Forecast – 23 & 24 Jan - 2020

23 Jan 2020 Thursday

24 Jan 2020 Friday



Legend:



**Calm
Winds**



5 Knots



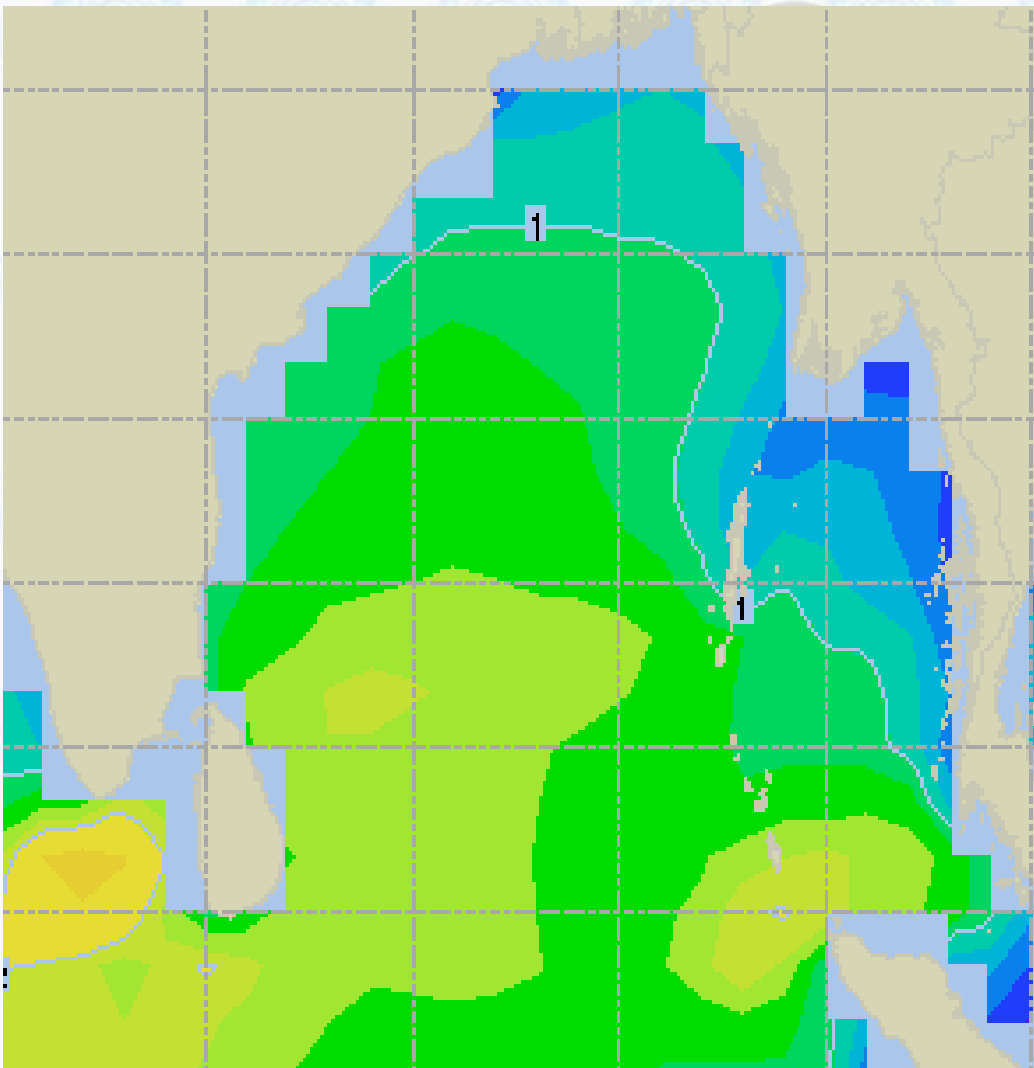
10 Knots



60 Knots



Sea State Forecast- 22 Jan - 2020



Sea State	Ht (m)
0	0-0.1
1	0-0.1
2	0.1-0.5
3	0.5-1.25
4	1.25-2.5
5	2.5-4.0
6	4-6
7	6-9
8	9-14
9	Over 14

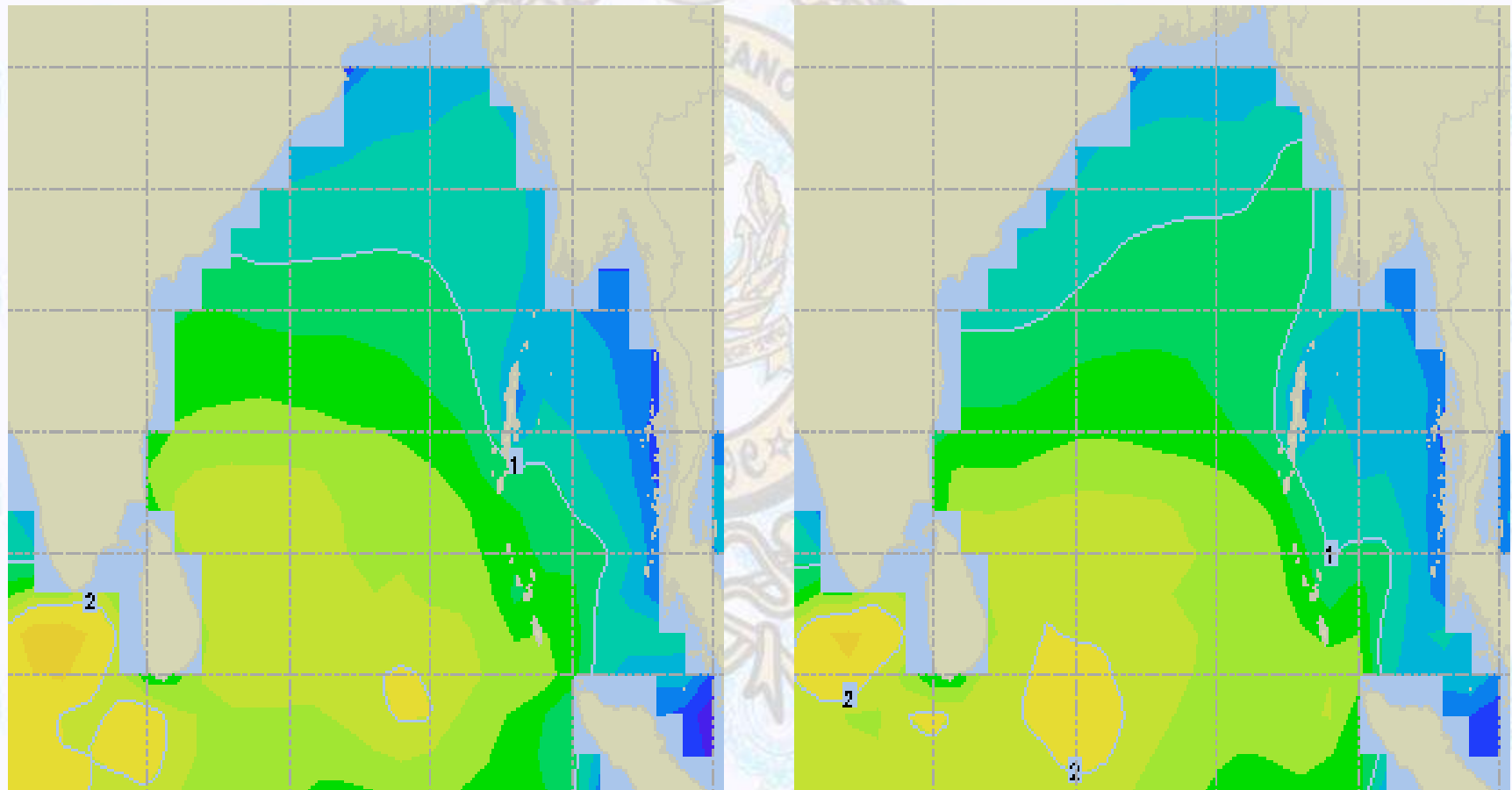




Sea State Forecast – 23 & 24 Jan - 2020

23 Jan 2020 Thursday

24 Jan 2020 Friday

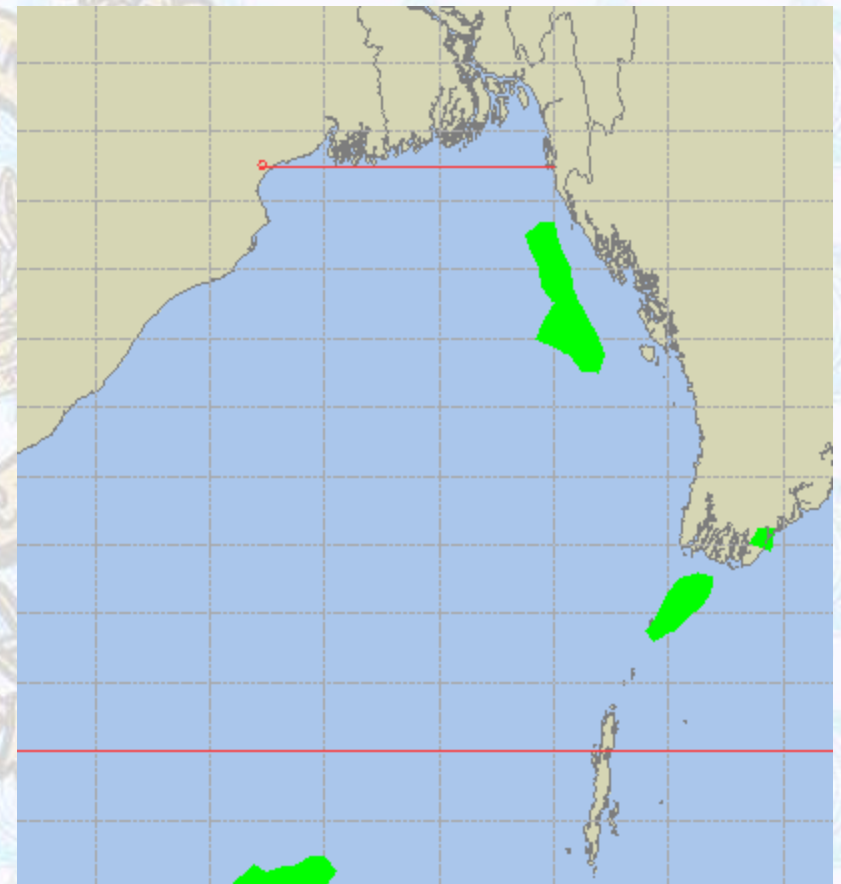
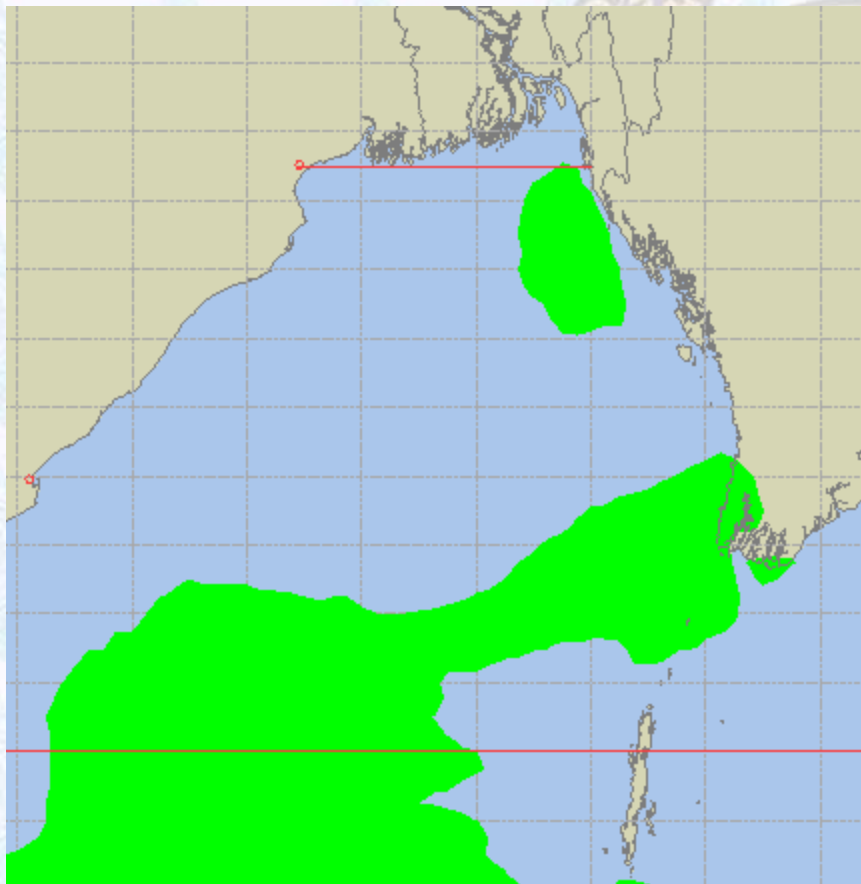




Peak Gusting Possibilities – 22 & 23 Jan - 2020

22 Jan 2020 Wednesday

23 Jan 2020 Thursday

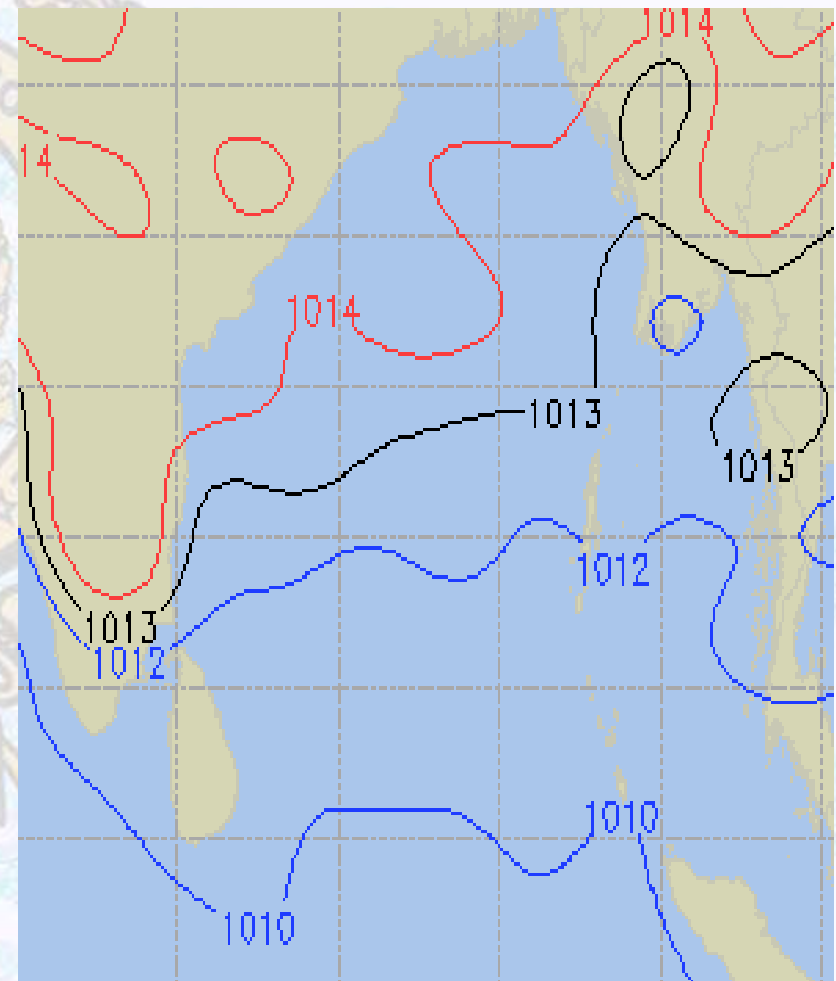
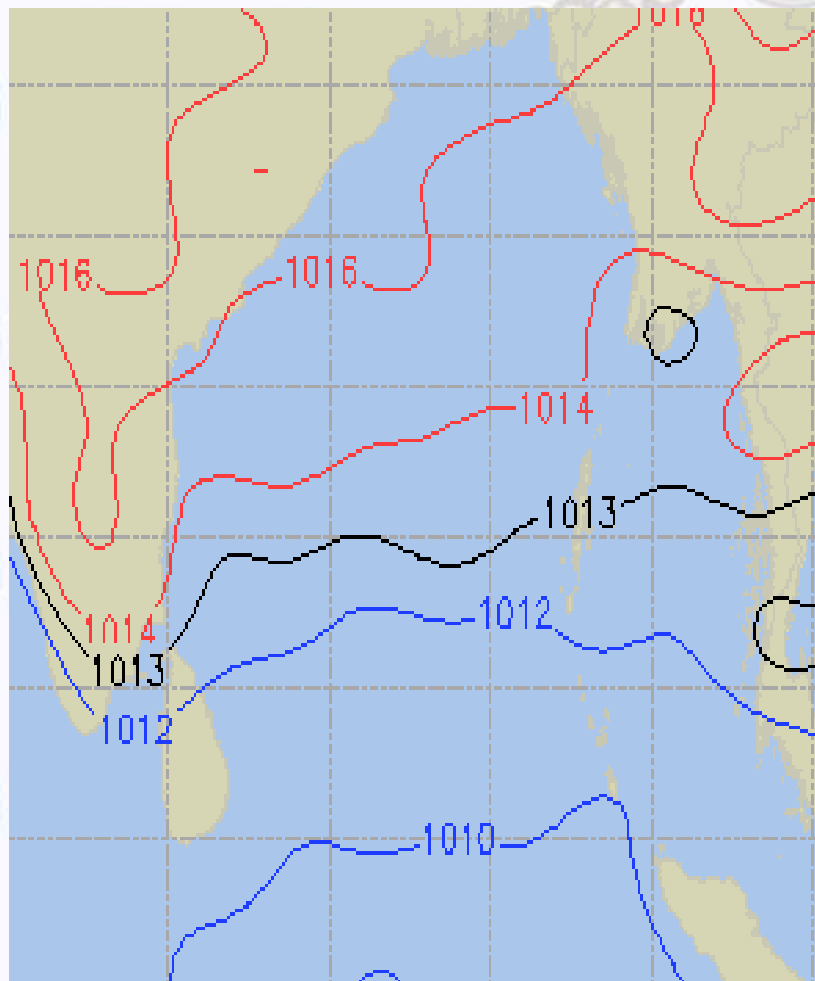




Surface Pressure forecast – 22 & 23 Jan - 2020

22 Jan 2020 Wednesday

23 Jan 2020 Thursday

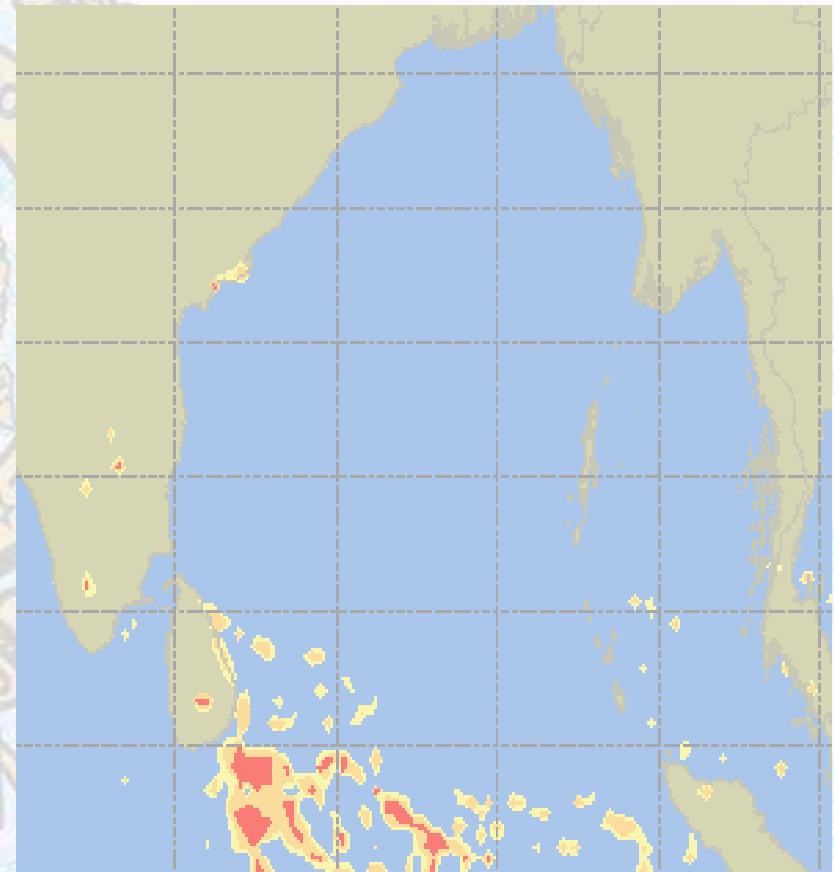
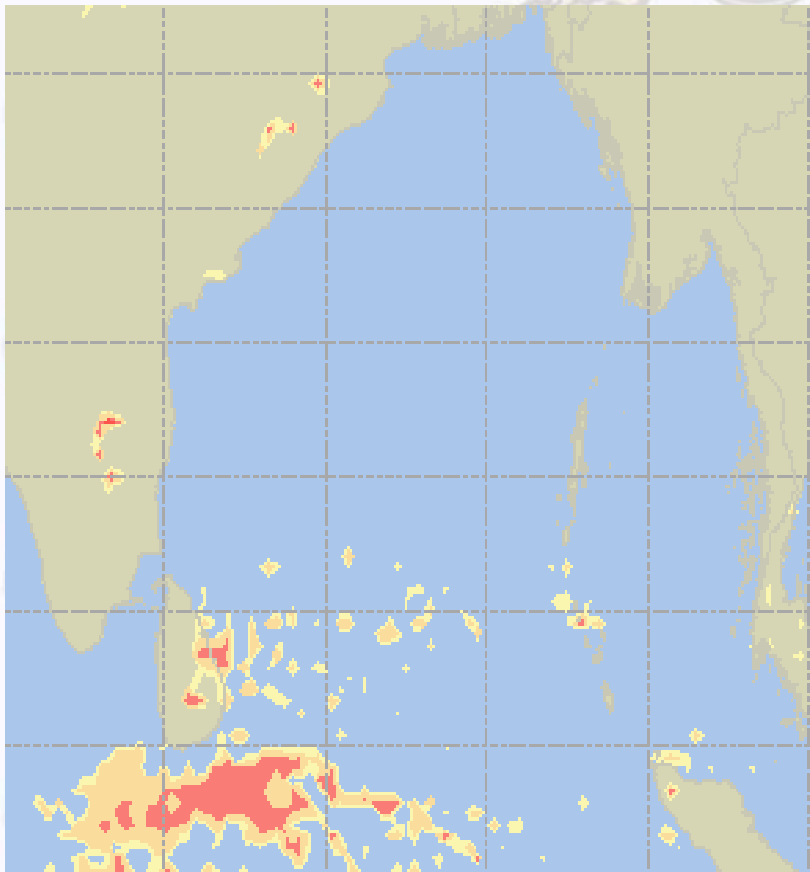




Visibility at Sea Forecast – 22 & 23 Jan - 2020

22 Jan 2020 Wednesday

23 Jan 2020 Thursday



Visibility Scale:



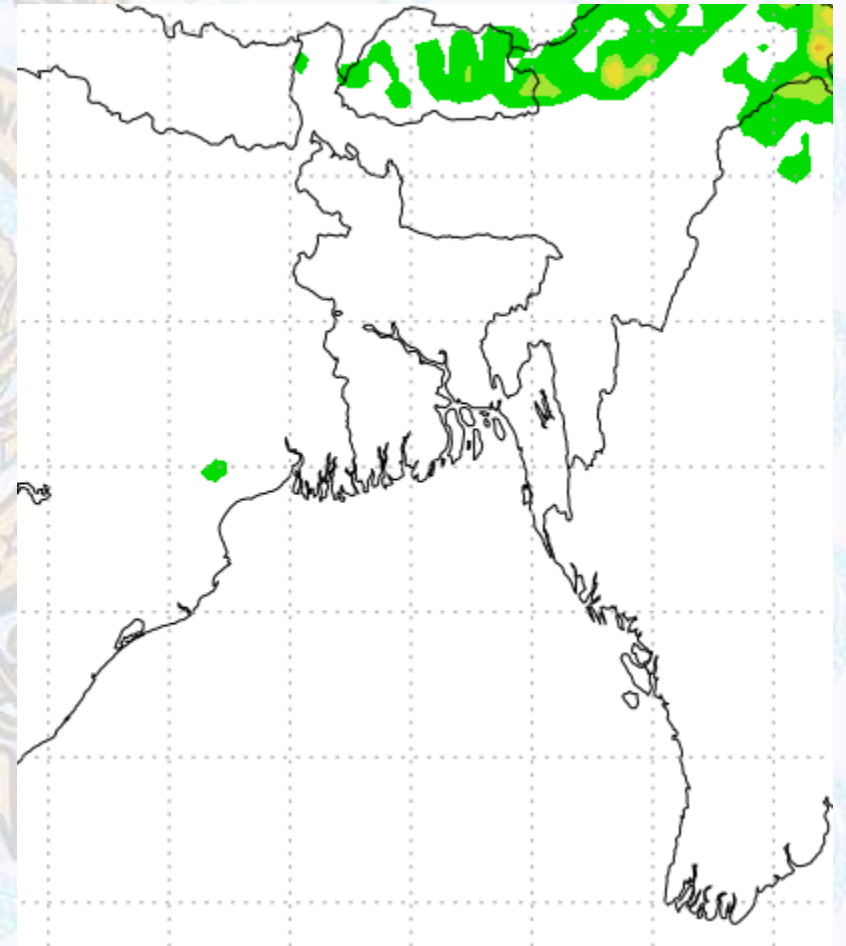
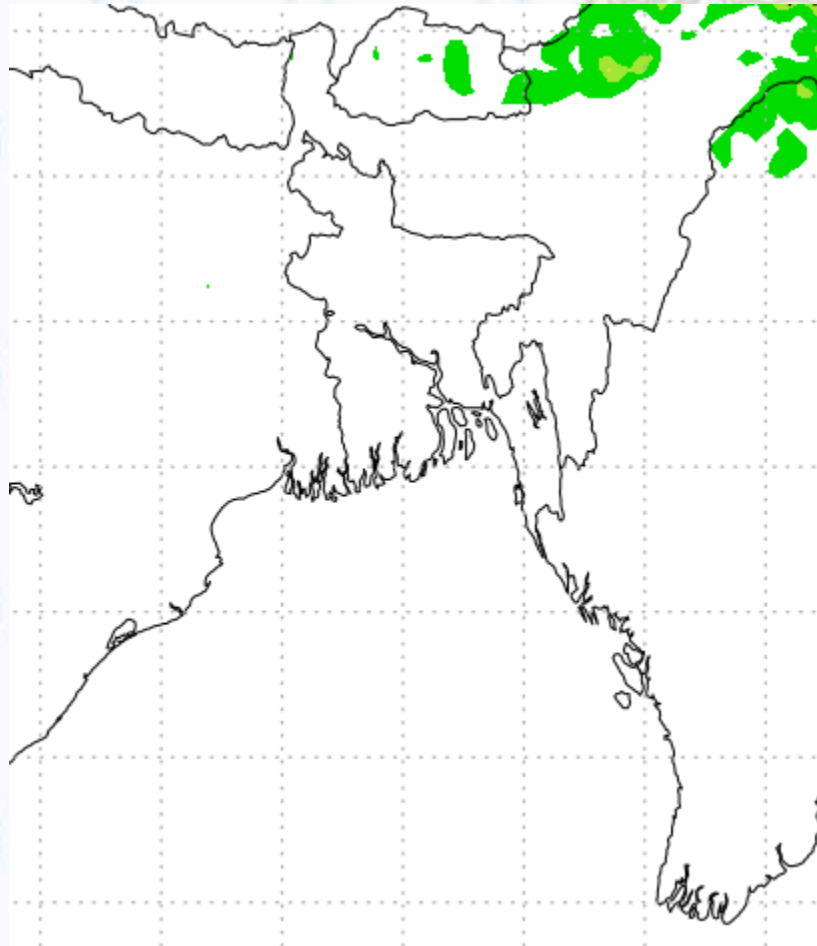
Ref (Slide 12-18): <http://www.weatheronline.co.uk/marine/weather?LEVEL>



Precipitation

Rain(mm) 22 & 23 Jan 20

Rain(mm) 23 & 24 Jan 20



Precipitation Scale (mm):





Tidal Information

KHAL NO. 10

COX'S BAZAR

HIRAN POINT

	Time	Height		Time	Height		Time	Height
22Jan 2020	0550	0.64		0307	0.68		0322	0.90
	1148	3.47		0848	2.50		0917	2.24
	1752	0.69		1522	0.56		1519	0.73
	-	-		2115	2.97		2142	2.68
23Jan 2020	Time	Height		Time	Height		Time	Height
	0001	4.02		0401	0.56		0413	0.76
	0639	0.56		0939	2.63		1006	2.35
	1232	3.57		1613	0.45		1608	0.65
	1839	0.64		2201	3.13		2225	2.77
24Jan 2020	Time	Height		Time	Height		Time	Height
	0040	4.09		0314	0.50		0455	0.65
	0721	0.51		0935	3.30		1046	2.43
	1308	3.67		1703	0.70		1649	0.58
	1918	0.60		2144	2.90		2302	2.82