



**WEATHER FORECAST FOR BN**

**19 - 22 JAN 2020**





# WEATHERFORECAST – DHAKA

## 19.01.2020

Hourly	2 PM	4 PM	8 PM	11 PM
Temp. / Dew Point	26 / 17	25 / 16	21 / 16	19 / 16
Wind	14 km/h NW	17 km/h NNW	10 km/h NNW	7 km/h NNW
Humidity	57%	58%	73%	80%
Chance of Precip	1%	1%	2%	5%
Cloud Cover	28%	29%	15%	11%
Conditions	Sunny	Sunny	Clear	Clear
Sunrise Sunset	6: 43 AM 5: 36 PM			

### Conditions

Pressure : 1013 hpa

Visibility : 3.22 km

Ref: <https://www.wunderground.com/weather/bd/dhaka>



# WEATHER FORECAST – CHATTOGRAM

## 19.01.2020

Hourly	2 PM	4 PM	8 PM	11 PM
Temp. / Dew Point	27 / 14	26 / 15	21 / 17	20 / 17
Wind	3 km/h WNW	6 km/h WNW	9 km/h NW	8 km/h NNW
Humidity	46%	52%	74%	86%
Chance of Precip.	1%	1%	3%	6%
Cloud Cover	32%	19%	3%	2%
Conditions	Sunny	Sunny	Clear	Clear
Sunrise Sunset	6: 35 AM 5: 32 PM			

### Conditions

Pressure : 1012 hpa

Visibility : 8.05 Km

Ref: <https://www.wunderground.com/weather/bd/chittagong>



# WEATHER FORECAST – KHULNA

## 19.01.2020

Hourly	2 PM	4 PM	8 PM	11 PM
Temp. / Dew Point	27 / 16	27 / 15	21 / 17	19 / 16
Wind	8 km/h NW	9 km/h NW	8 km/h N	6 km/h N
Humidity	50%	49%	76%	86%
Chance of Precip.	1%	1%	2%	4%
Cloud Cover	1%	3%	6%	5%
Conditions	Sunny	Sunny	Clear	Clear
Sunrise Sunset	6: 45 AM 5: 42 PM			

### Conditions

Pressure : 1013 hpa

Visibility : 14.48 Km

Ref: <https://www.wunderground.com/weather/bd/khulna>



# GENERAL WEATHER FORECAST – DHAKA

Description	20 Jan 2020	21 Jan 2020	22 Jan 2020
<b>Temperature (C)</b>	24°C/ 13°C	24°C/ 12°C	24°C/ 15°C
<b>Summary</b>	Sunny	Sunny	Sunny
<b>Sun Rise/Set</b>	6h43m00s/17h36m00s	6h42m54s/17h36m42s	6h42m42s/17h37m24s
<b>Day Length</b>	10h53m00s	10h53m48s	10h54m42s
<b>Moon Rise/ Set</b>	2:23AM 1:43PM	3:23AM 2:29PM	4:22AM 3:21PM
<b>Moon Phase/ illu</b>	Waning Crescent, 19%	Waning Crescent, 11%	Waning Crescent, 5%
<b>Nautical Twilight</b>	0550,1827	0550,1828	0550,1829
<b>Civil Twilight</b>	0618,1800	0618,1800	0618,1801
<b>Humidity</b>	D : 70%    N : 76%	D : 61%    N : 75%	D : 62%    N : 74%
<b>Barometer (mb)</b>	1015	1017	1018
<b>Visibility</b>	Good	Good	Good
<b>Precip Chance</b>	10%	10%	10%
<b>Wind (mph)</b>	11 km/h WNW	10 km/h NW	9 km/h NW

Ref: <https://weather.com/weather/5day//BGXX0003:1:BG>



# GENERAL WEATHER FORECAST– CHATTOGRAM

Description	20 Jan 2020	21 Jan 2020	22 Jan 2020
<b>Temperature (C)</b>	26°C/ 16°C	25°C/ 13°C	25°C/ 14°C
<b>Summary</b>	Sunny	Sunny	Sunny
<b>Sun Rise/Set</b>	6h34m42s/17h32m54s	6h34m36s/17h33m36s	6h34m24s/17h34m18s
<b>Day Length</b>	10h58m12s	10h59m00s	10h59m54s
<b>Moon Rise/ Set</b>	2:15AM 1:39PM	3:15AM 2:26PM	4:13AM 3:18PM
<b>Moon Phase/ illu</b>	Waning Crescent, 19%	Waning Crescent, 11%	Waning Crescent, 5%
<b>Nautical Twilight</b>	0543, 1823	0543, 1824	0543, 1825
<b>Civil Twilight</b>	0610.,1756	0610.,1757	0610.,1757
<b>Humidity</b>	D : 71% N : 84%	D : 63% N : 76%	D : 58% N : 74%
<b>Barometer (mb)</b>	1014	1017	1018
<b>Visibility</b>	Good	Good	Good
<b>Precip Chance</b>	10%	10%	1%
<b>Wind (mph)</b>	11 km/h NNW	11 km/h NNW	12 km/h NNW

Ref: <https://weather.com/weather/5day//BGXX0002:1:BG>



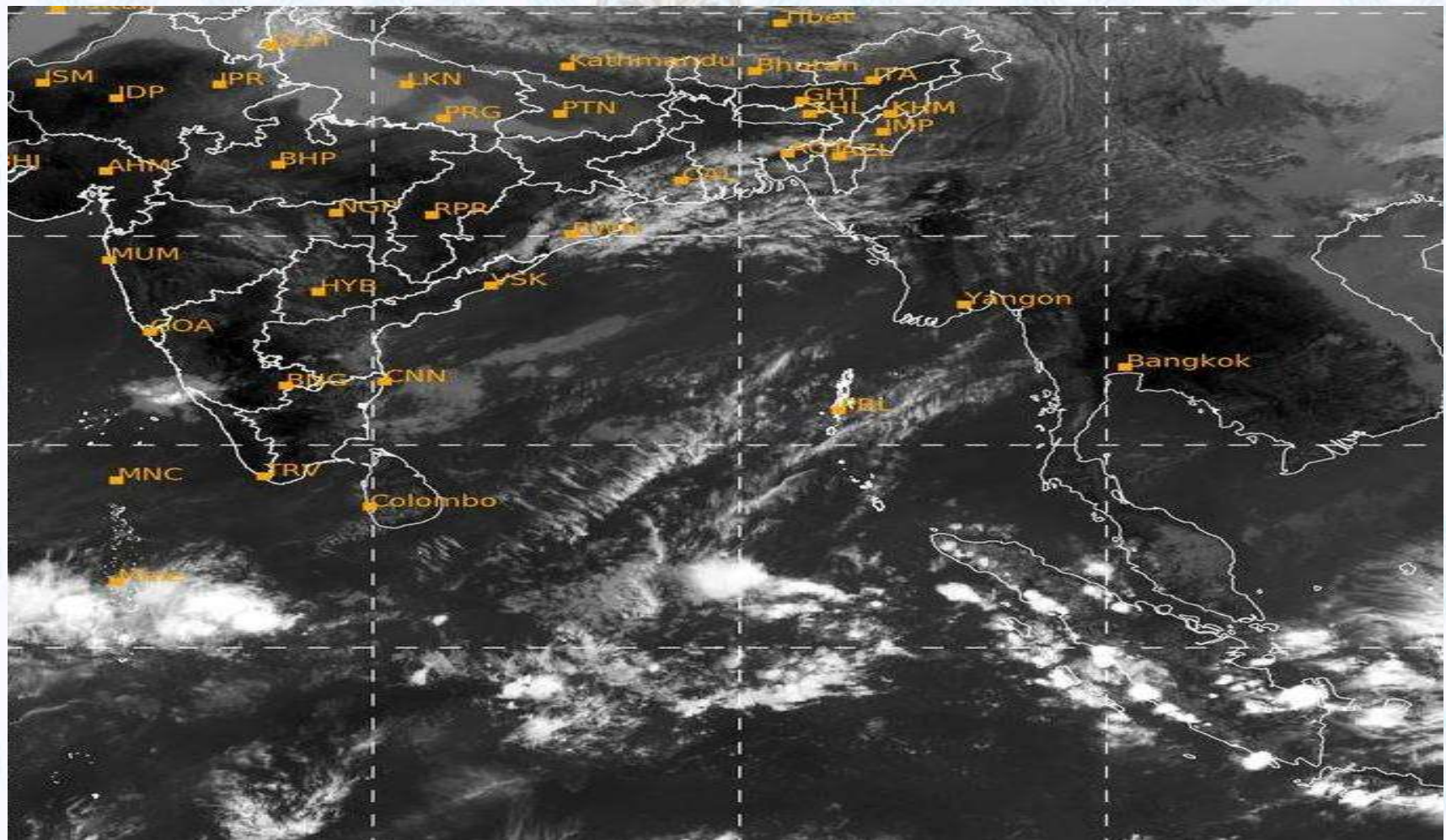
# GENERAL WEATHER FORECAST – KHULNA

Description	20 Jan 2020	21 Jan 2020	22 Jan 2020
<b>Temperature(C)</b>	24°C/ 12°C	24°C/ 11°C	24°C/ 14°C
<b>Summary</b>	Sunny	Sunny	Sunny
<b>Sun Rise/Set</b>	6h44m42s/17h41m12s	6h44m36s/17h41m54s	6h44m24s/17h42m30s
<b>Day Length</b>	10h56m30s	10h57m18s	10h58m06s
<b>Moon Rise/Set</b>	2:25AM 1:49PM	3:25AM 2:36PM	4:24AM 3:28PM
<b>Moon Phase/illu</b>	Waning Crescent, 19%	Waning Crescent, 11%	Waning Crescent, 5%
<b>Nautical Twilight</b>	0553, 1832	0552, 1833	0552, 1833
<b>Civil Twilight</b>	0620.,1805	0620.,1805	0620.,1806
<b>Humidity</b>	D : 68%    N : 79%	D : 61%    N : 80%	D : 62%    N : 79%
<b>Barometer (mb)</b>	1015	1017	1018
<b>Visibility</b>	Good	Good	Good
<b>Precip Chance</b>	20%	10%	10%
<b>Wind (mph)</b>	11 km/h NW	9 km/h NNW	8 km/h NW

Ref: <https://weather.com/weather/5day//BGXX0005:1:BG>



# SATELLITE VIEW OF BAY OF BENGAL



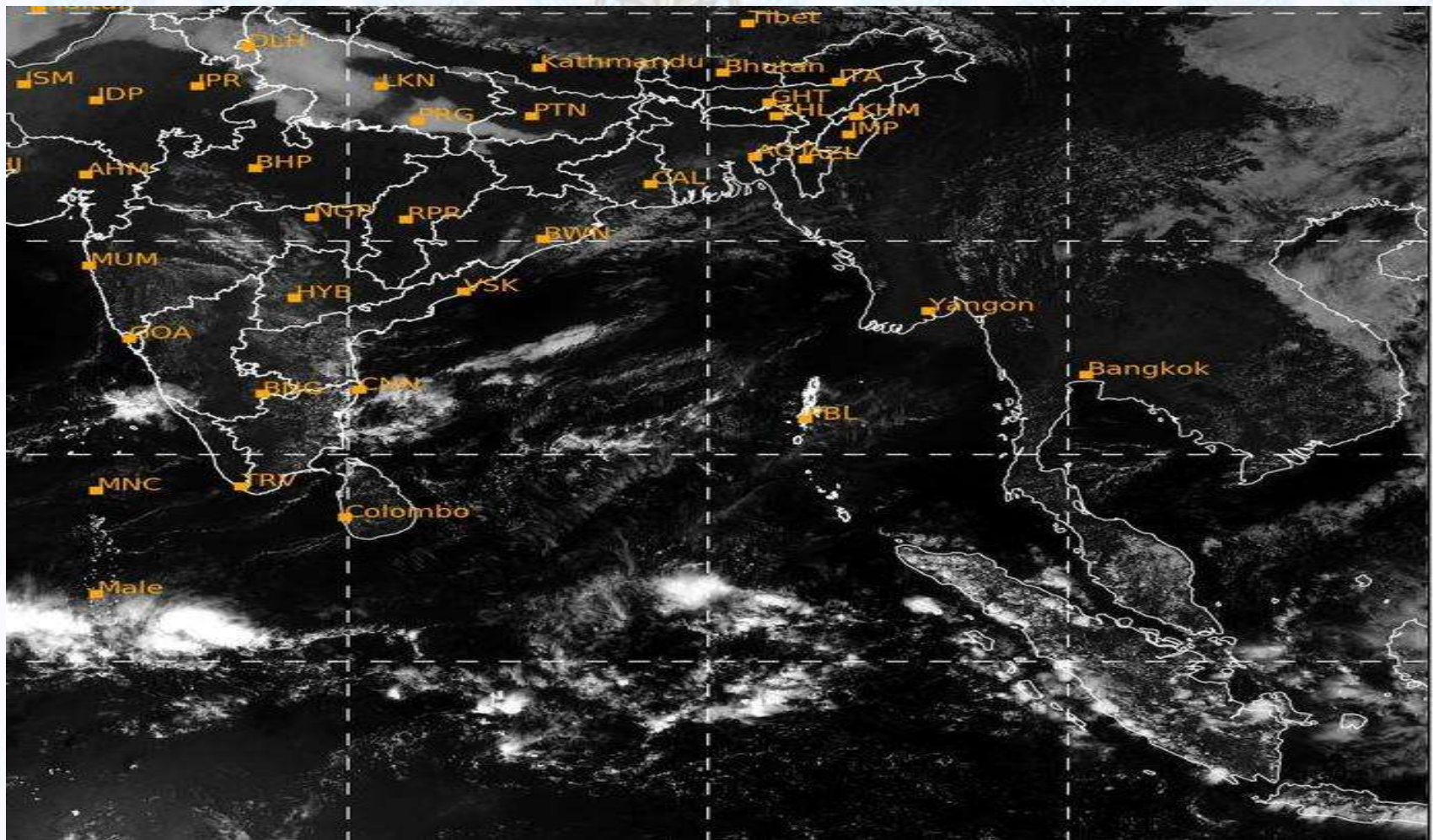
19/01/2020, 11:00 UTC MATSAT-IR

Ref: <http://satellite.imd.gov.in/insat.htm>





# SATELLITE VIEW OF BAY OF BENGAL



19/01/2020, 11:00 MATSAT-VIS

Ref: <http://satellite.imd.gov.in/insat.htm>



# Fleet Forecast Sea Area C-90 ( Valid for 12 Hrs Commencing 1000 UTC of 19.01.2020)

<b>Part One</b>	NO STORM WARNING.	
<b>Part Two</b>	SEASONAL LOW LIES OVER SOUTH BAY.	
<b>Part Three</b>	Weather	TEMPORARY PARTLY CLOUDY OVER AREA C-90.
	Wind	N/NE'LY, 08-12 KTS.
	Visibility	02-04 KMS, REDUCING TO 1000 M OR LESS IN FOG.
	Outlook	FOR SUBSEQUENT 12 HOURS: LITTLE CHANGE.
	MSL Pressure	AT =19,0000 UTC. CHATTOGRAM =1012 HPA



# Inland River Port Warning (VALID TILL 06 PM OF 19.01.2020)

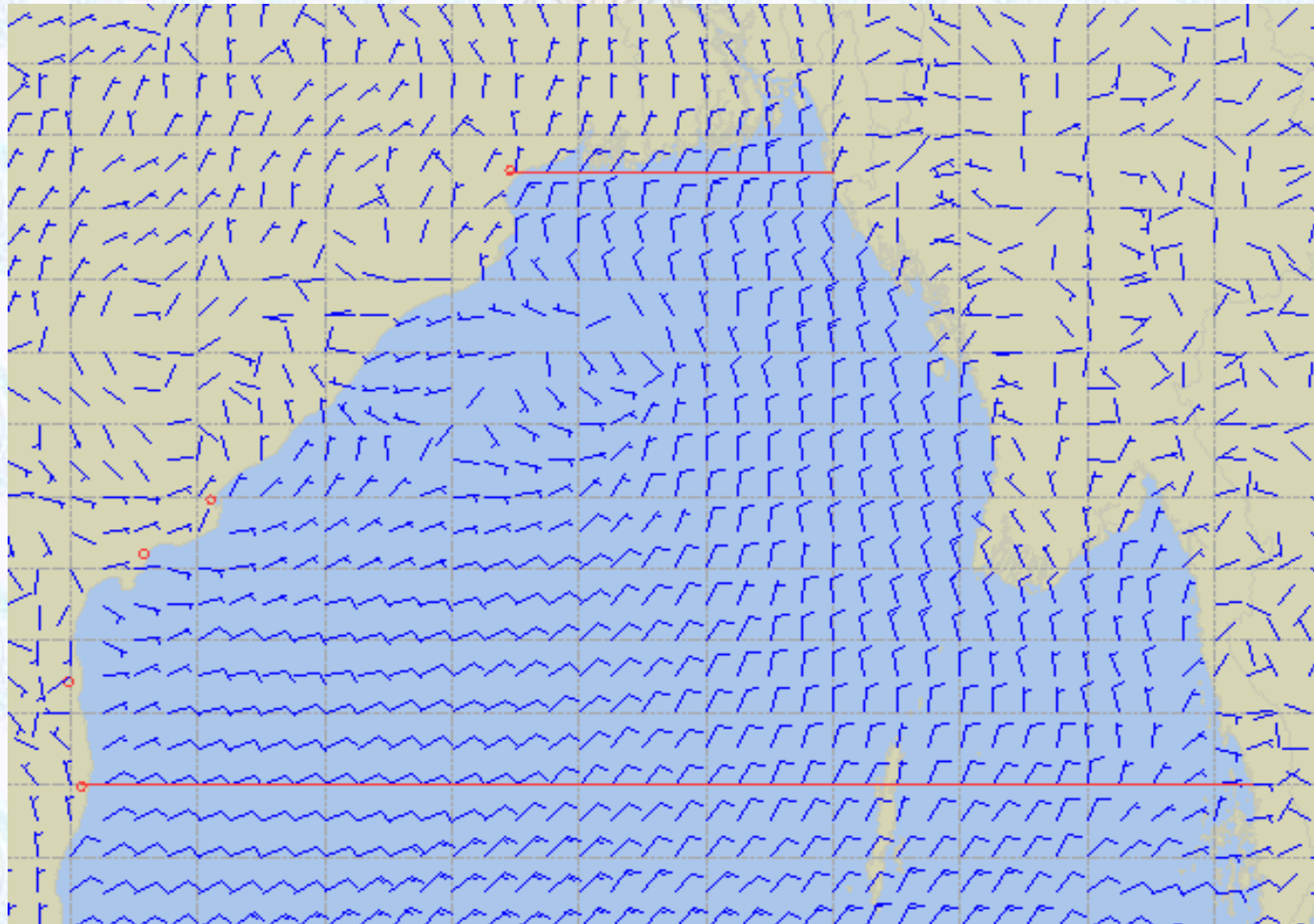
THERE IS NO INLAND RIVERPORTS WARNING & NO SIGNAL IS TO BE HOISTED.



Ref: <http://www.bmd.gov.bd/?/home>



# Surface Wind Forecast- 20 Jan- 2020



**Legend:**



**Calm  
Winds**



**5 Knots**



**10 Knots**



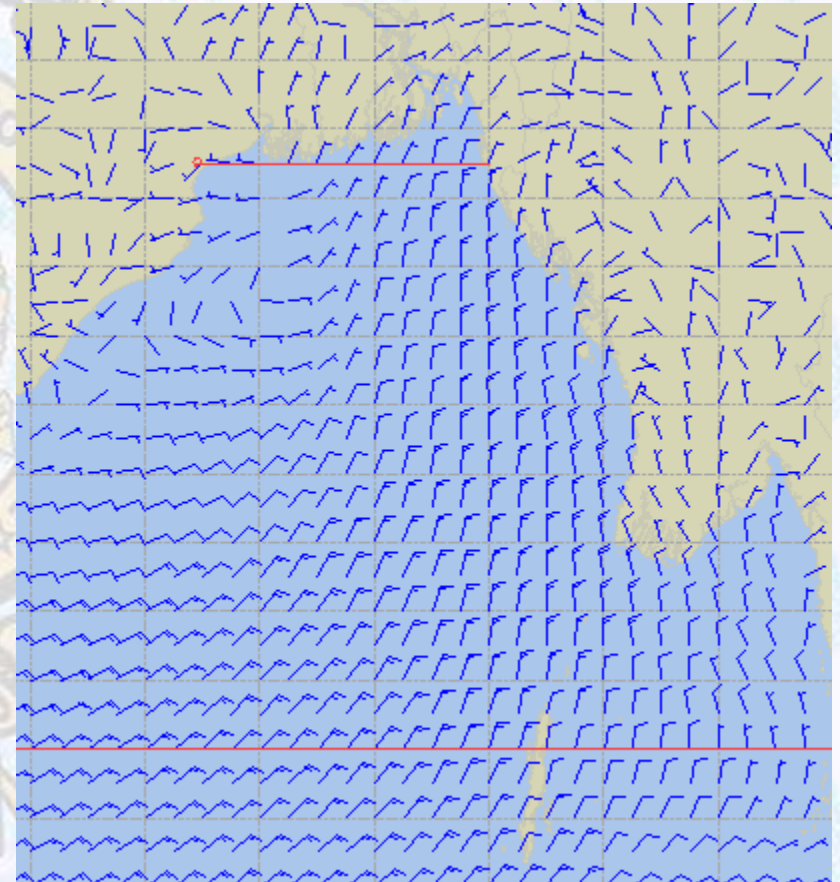
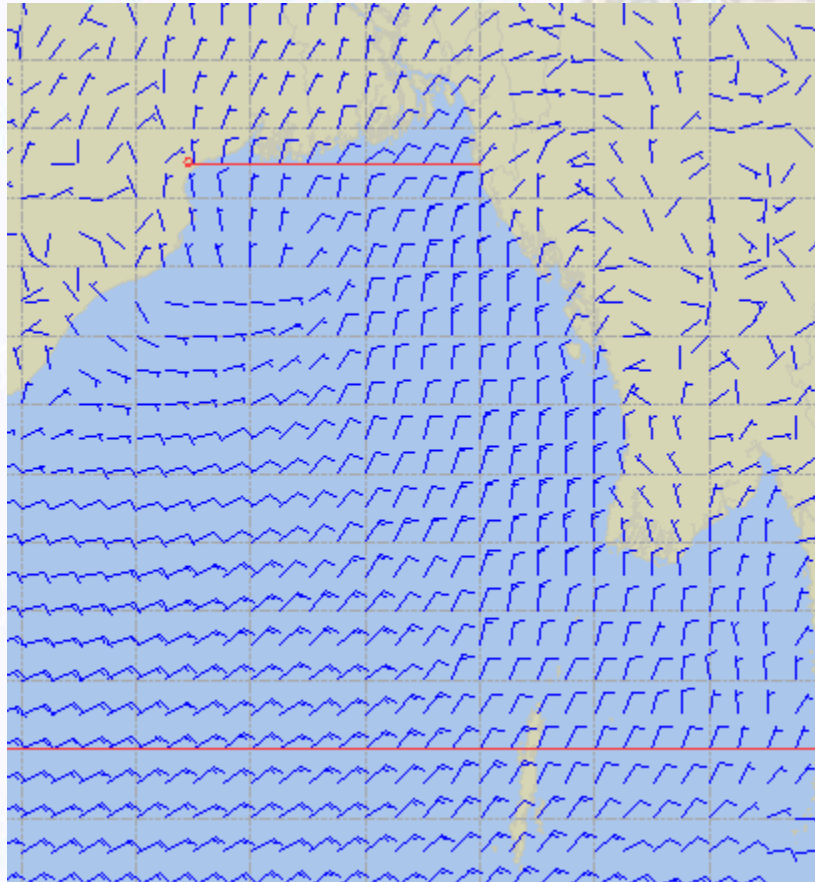
**60 Knots**



# Surface Wind Forecast – 21 & 22 Jan - 2020

21 Jan 2020 Tuesday

22 Jan 2020 Wednesday



**Legend:**



Calm  
Winds



5 Knots



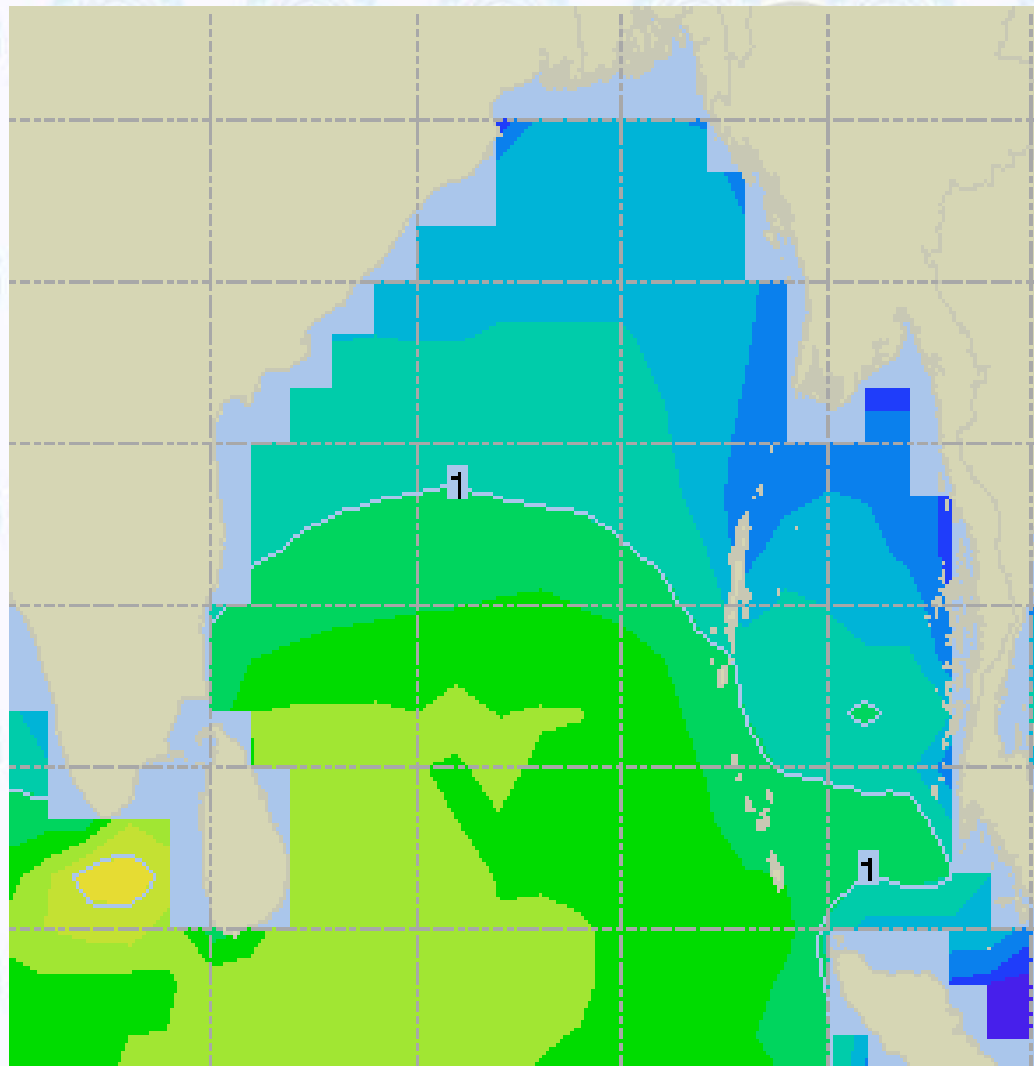
10 Knots



60 Knots



# Sea State Forecast- 20 Jan - 2020



Sea State	Ht (m)
0	0-0.1
1	0-0.1
2	0.1-0.5
3	0.5-1.25
4	1.25-2.5
5	2.5-4.0
6	4-6
7	6-9
8	9-14
9	Over 14

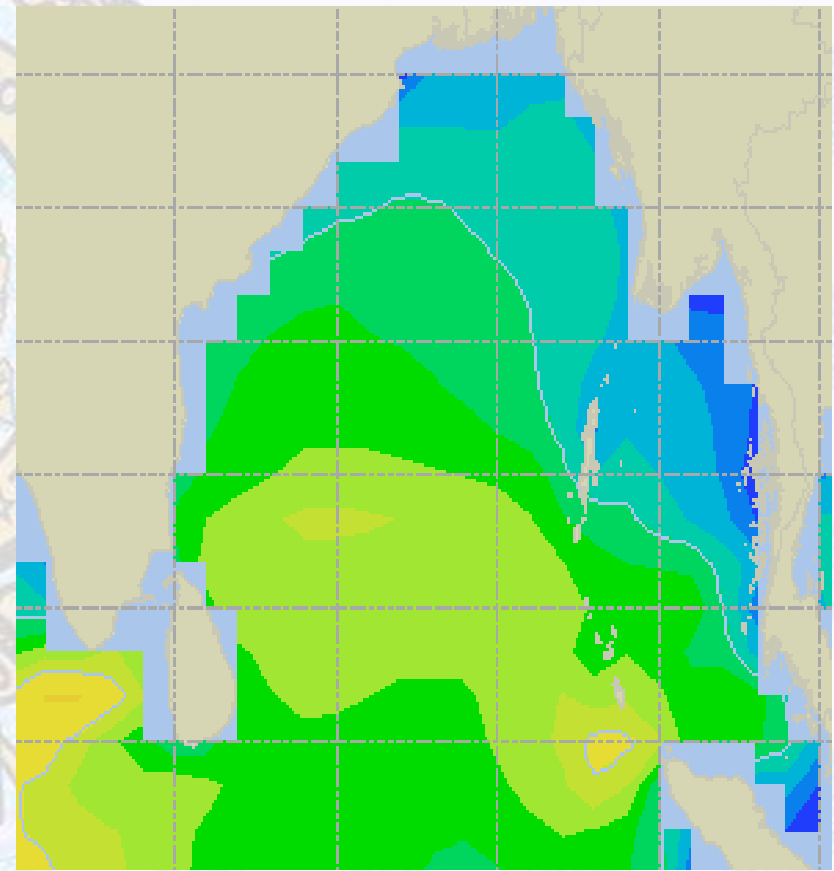
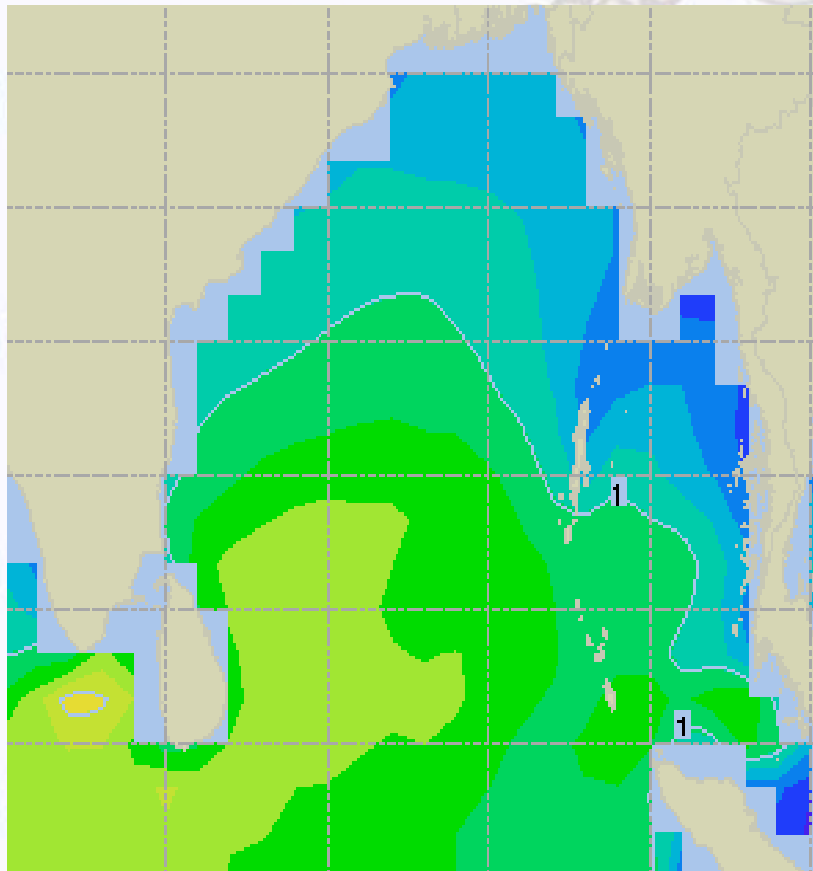




# Sea State Forecast – 21 & 22 Jan - 2020

21 Jan 2020 Tuesday

22 Jan 2020 Wednesday

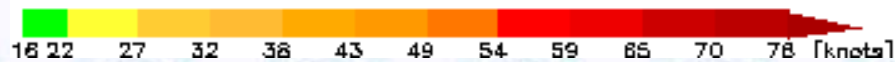
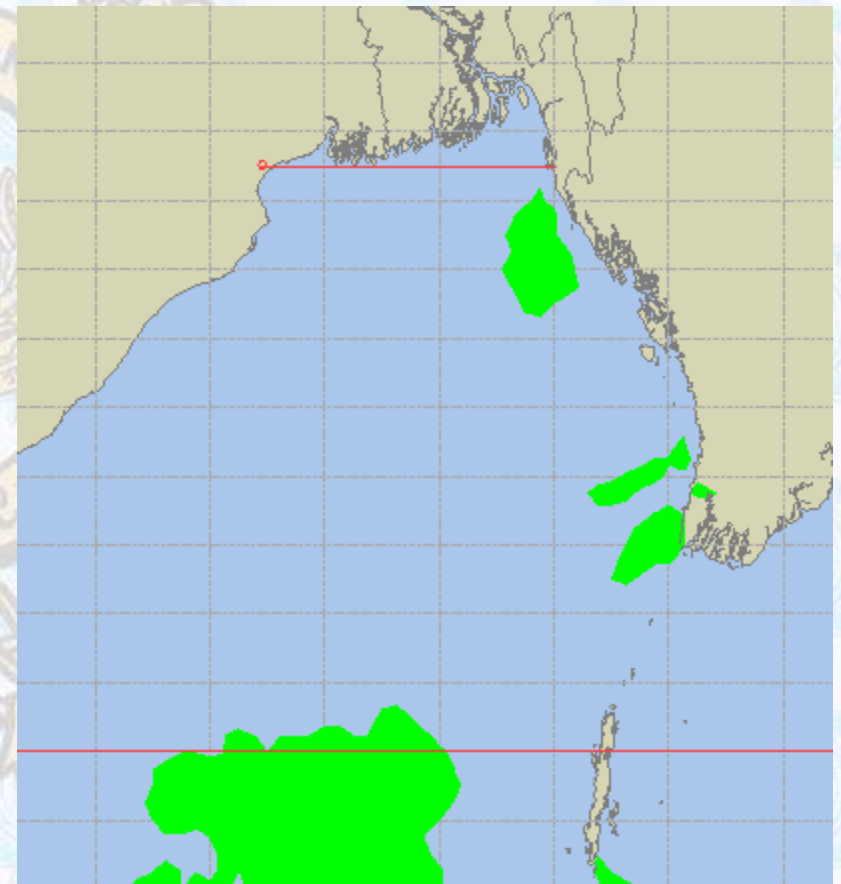
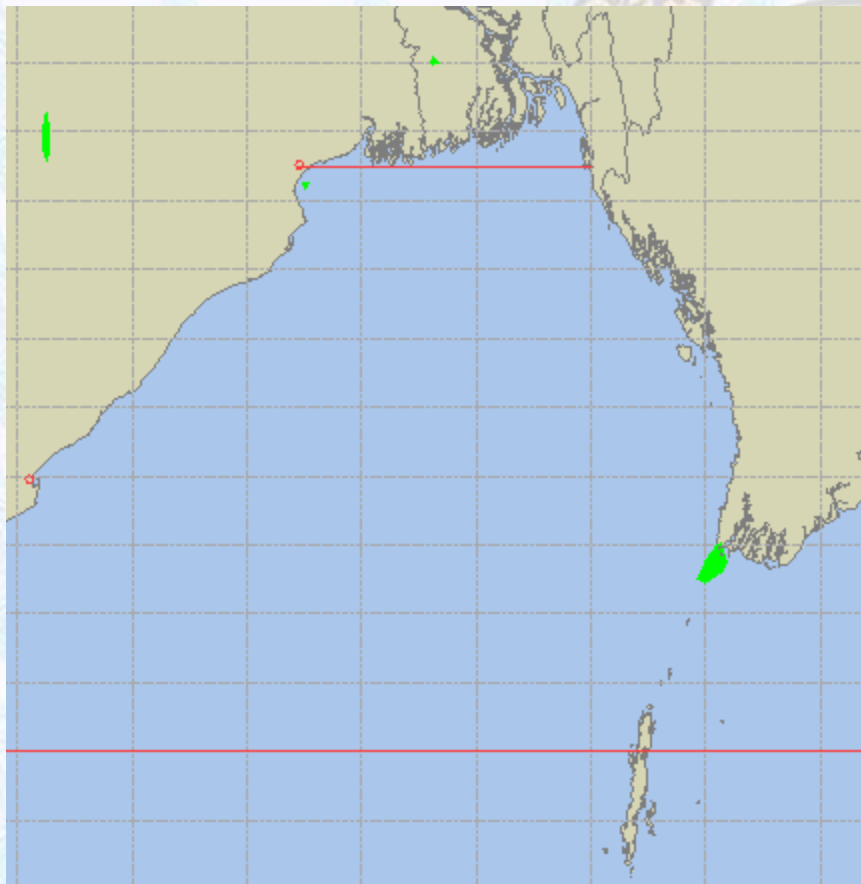




# Peak Gusting Possibilities – 20 & 21 Jan - 2020

20 Jan 2020 Monday

21 Jan 2020 Tuesday

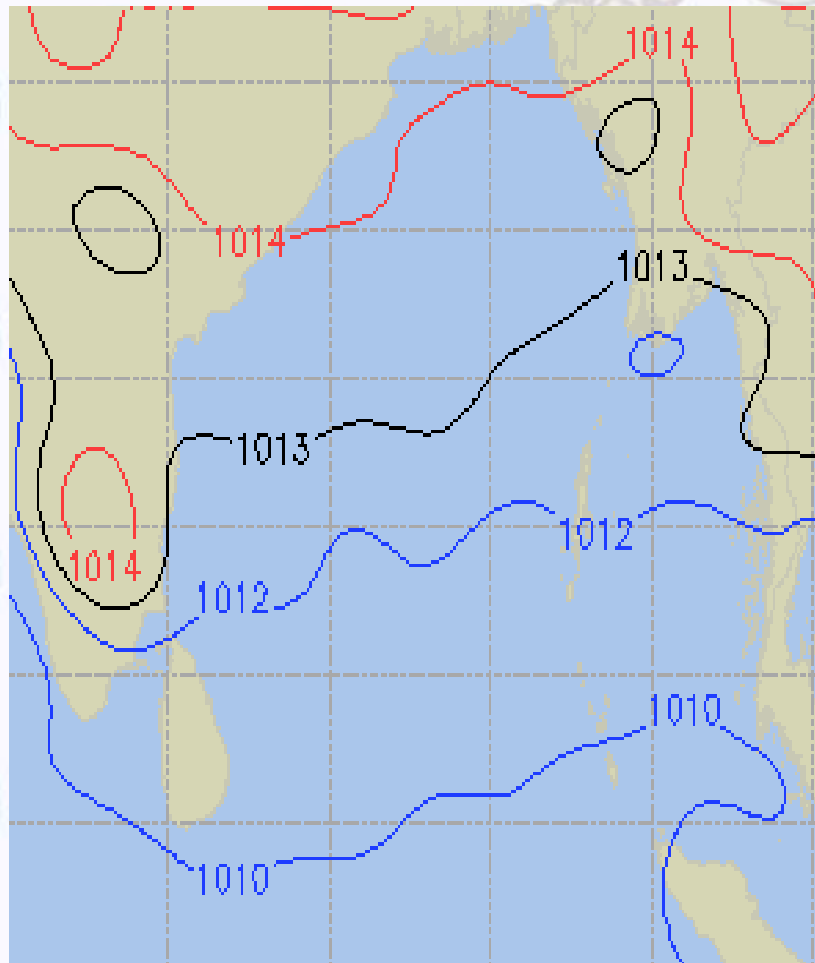




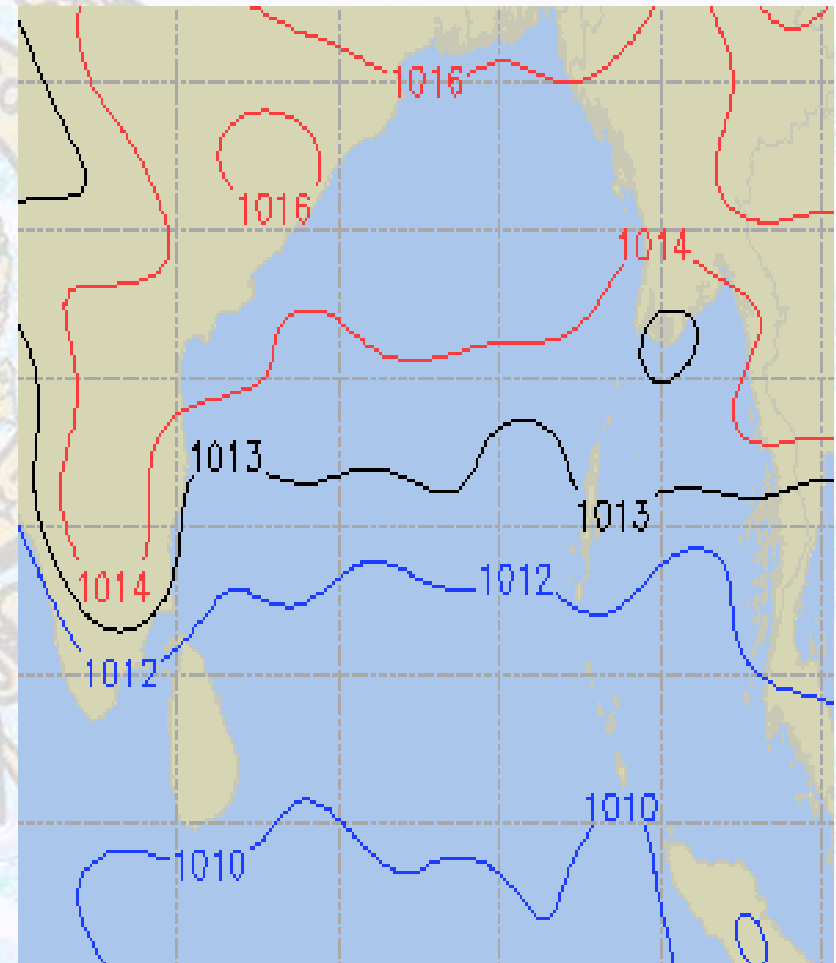


# Surface Pressure forecast – 20 & 21 Jan - 2020

20 Jan 2020 Monday



21 Jan 2020 Tuesday

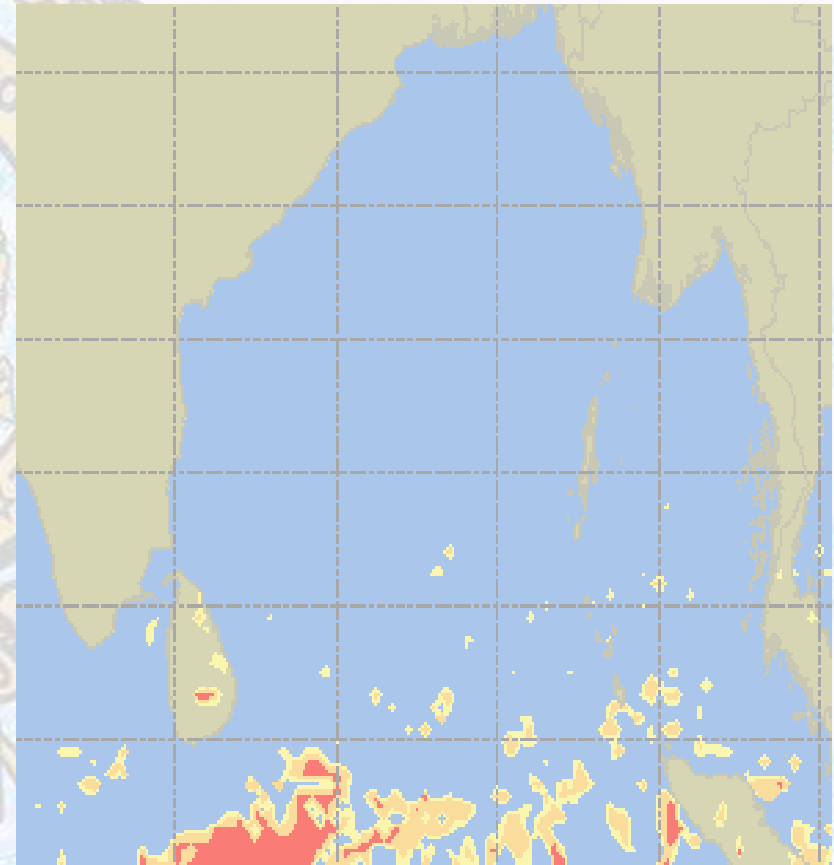
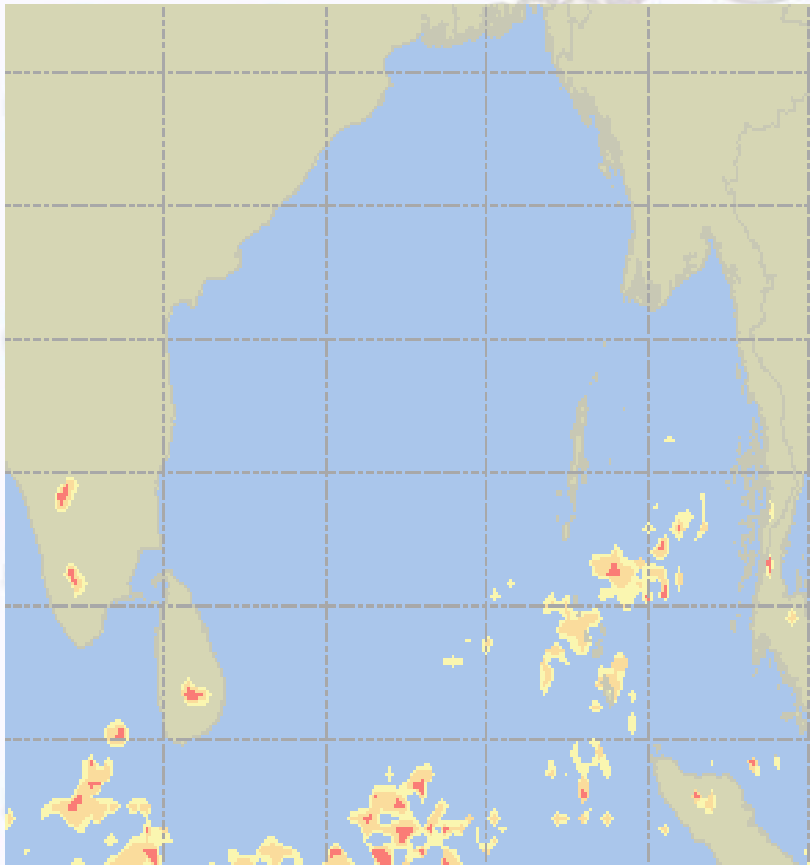




# Visibility at Sea Forecast – 20 & 21 Jan - 2020

20 Jan 2020 Monday

21 Jan 2020 Tuesday



**Visibility Scale:**



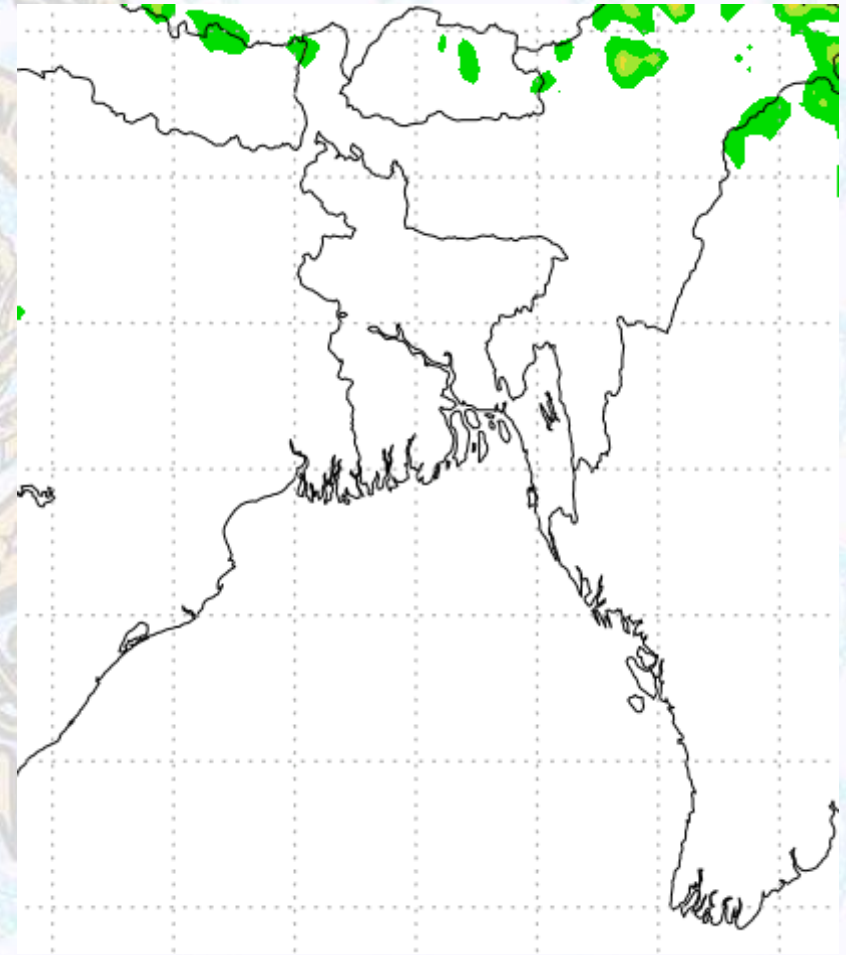
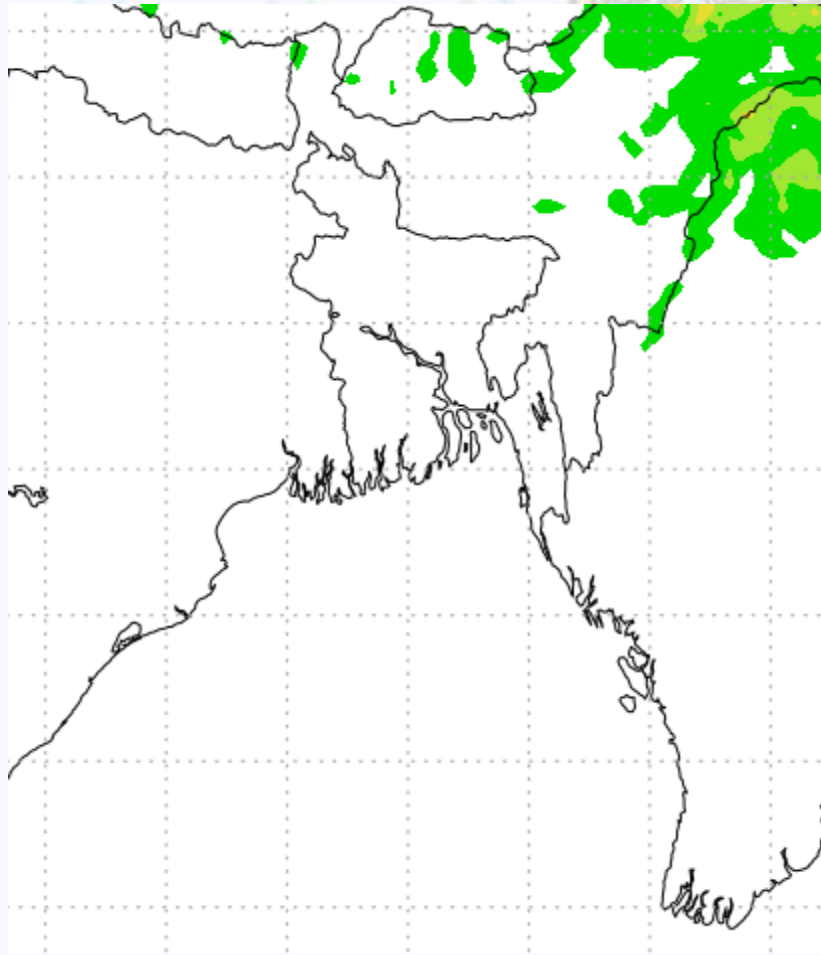
Ref (Slide 12-18): <http://www.weatheronline.co.uk/marine/weather?LEVEL>



# Precipitation

Rain(mm) 20 & 21 Jan 20

Rain(mm) 21 & 22 Jan 20



Precipitation Scale (mm):





# Tidal Information

## KHAL NO. 10

## COX'S BAZAR

## HIRAN POINT

	Time	Height		Time	Height		Time	Height
<b>20Jan 2020</b>	0338	0.91		0041	0.840		0052	1.13
	0938	3.32		0630	2.37		0651	2.10
	1552	0.78		1312	0.74		1308	0.88
	2214	3.85		1919	2.63		1947	2.45
<b>21Jan 2020</b>	Time	Height		Time	Height		Time	Height
	0450	0.77		0201	0.79		0216	1.04
	1051	3.37		0746	2.39		0814	2.13
	1657	0.74		1421	0.67		1419	0.82
	2312	3.94		2022	2.79		2050	2.57
<b>22Jan 2020</b>	Time	Height		Time	Height		Time	Height
	0550	0.64		0307	0.68		0322	0.90
	1148	3.47		0848	2.50		0917	2.24
	1752	0.69		1522	0.56		1519	0.73
	-	-		2115	2.97		2142	2.68