



SUMMARY OF MARINE WEATHER FORECAST
COASTAL AREA OF BANGLADESH
DATE: 31 JULY TO 07 AUG 2024



Fleet forecast	Monsoon is moderate over North Bay.
Wind direction, speed	South/south-easterly 15 kts, (Temporary gusting up to 22 kts).
Wave height & sea state	Wave height: 0.3 to 2.9 m (Sea state:1 to 5).
Sea surface temperature	27°C - 29°C (May remain nearly unchanged).
Baro pressure	997 - 1008 mb
Rainfall	Light to moderate rain/thunder showers over Bay of Bengal & adjoining area with moderately heavy to very heavy falls at place over Barishal, Chattogram and Sylhet divisions.
Outlook for 31 July to 07 Aug 2024: Rainfall activity may increase initially and decrease at the end of said period.	

MARINE WEATHER FORECAST- NEAR AUTHORITY BUOY (Lat 22° 12'N, Long 091° 38'E)

DATE : 31 July to 07 Aug 2024

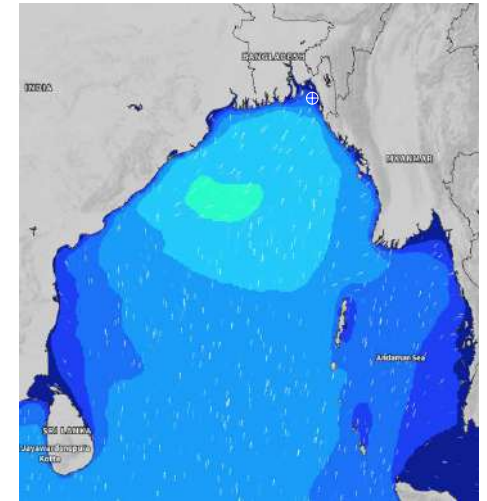
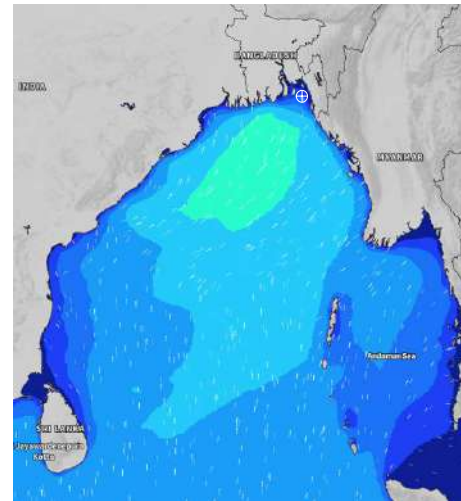
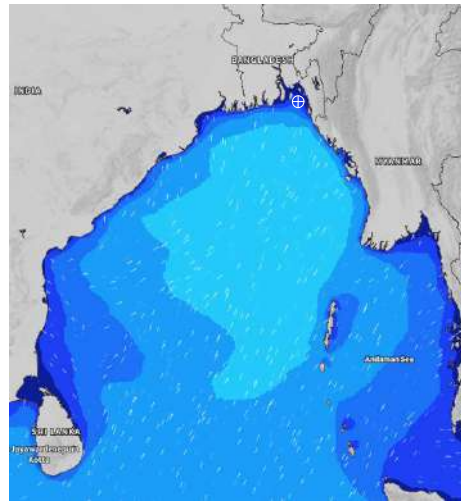
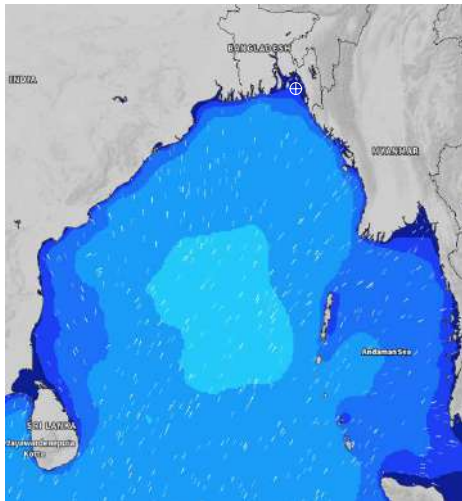
Date	Time	Max Wind Spd (kts)	Wind Direction	Wave Ht (m)	Sea State	Baro Pressure	Air Temp		Sea Surface Temp	Humidity (%)	Prob of Rain (%)	Sea State	Wave Ht (m)
							Max	Min					
31-07-24	0001	14	SSE	0.3	2	1004	29	26	27	91%	41% (0.4 mm)	0	0
	0600	13	SSE	0.3	2	1002			26	94%	35% (0.1 mm)	1	0 - 0.1
	1200	15	SW	0.4	2	1002			27	88%	98% (5.5 mm)	2	0.1 - 0.5
	1800	15	SE	0.3	2	1001			27	89%	80% (2.4 mm)	3	0.5 - 1.25
01-08-24	0001	18	SSE	0.4	2	1002	29	26	27	91%	95% (5.2 mm)	4	1.25 - 2.5
	0600	17	SE	0.4	2	1000			26	93%	91% (2.5 mm)	5	2.5 - 4.0
	1200	15	SE	0.4	2	1001			27	89%	98% (3.2 mm)	6	4.0 - 6.0
	1800	18	SSE	0.4	2	1000			27	89%	84% (2.1 mm)	7	6.0 - 9.0
02-08-24	0001	20	SSE	0.4	2	1002	29	26	27	90%	95% (5.1 mm)	8	9.0 - 14.0
	0600	21	SE	0.4	2	1001			26	95%	99% (5.3 mm)	9	Over 14.0
	1200	20	SSE	0.4	2	1002			27	88%	93% (2.2 mm)		
	1800	21	SSE	0.4	2	1002			27	90%	80% (1.8 mm)		
03-08-24	0001	21	SE	0.4	2	1005	29	26	27	92%	80% (1.2 mm)		
	0600	20	SE	0.4	2	1005			26	94%	64% (0.7 mm)		
	1200	18	SE	0.4	2	1006			27	88%	85% (1.1 mm)		
	1800	19	SSE	0.4	2	1005			27	90%	42% (0.4 mm)		

31 July 24 Wed (Probability 98%)

01 Aug 24 Thu (Probability 95%)

02 Aug 24 Fri (Probability 90%)

03 Aug 24 Sat (Probability 80%)



Significant wave height (m)

MARINE WEATHER FORECAST- NEAR AUTHORITY BUOY (Lat 22° 12'N, Long 091° 38'E)

DATE : 31 July to 07 Aug 2024

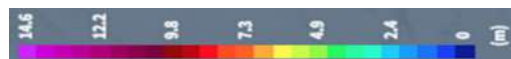
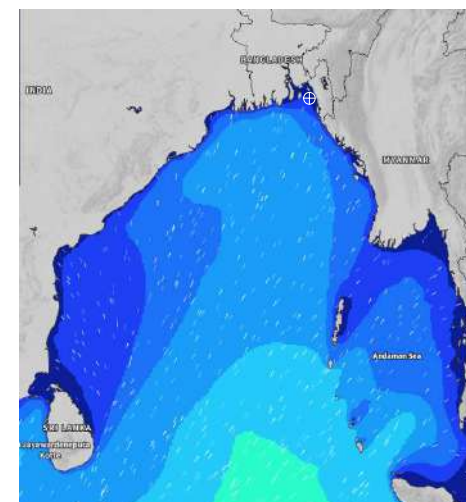
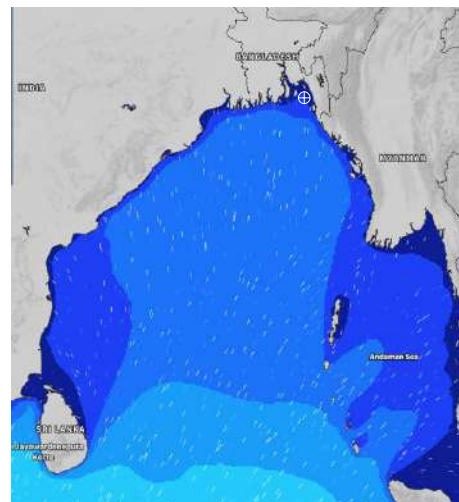
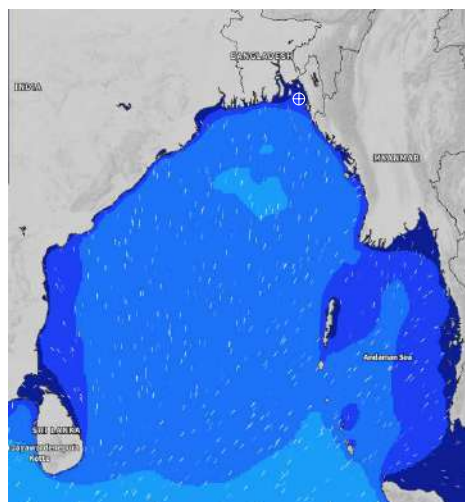
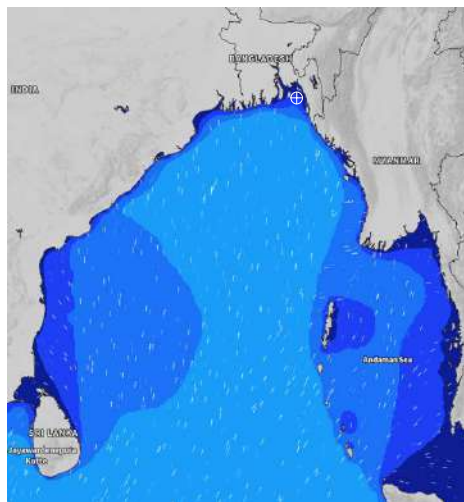
Date	Time	Max Wind Spd (kts)	Wind Direction	Wave Ht (m)	Sea State	Baro Pressure	Air Temp		Sea Surface Temp	Humidity (%)	Prob of Rain (%)	Sea State	Wave Ht (m)
							Max	Min					
04-08-24	0001	16	SSE	0.4	2	1008	29	26	27	91%	73% (0.8 mm)	0	0
	0600	15	SSE	0.4	2	1007			26	94%	77% (0.8 mm)	1	0 - 0.1
	1200	14	SSW	0.4	2	1007			27	87%	64% (0.7 mm)	2	0.1 - 0.5
	1800	16	S	0.4	2	1006			28	90%	44% (0.4 mm)	3	0.5 - 1.25
05-08-24	0001	14	SSE	0.3	2	1008	30	26	27	89%	49% (0.5 mm)	4	1.25 - 2.5
	0600	13	SSE	0.3	2	1008			26	93%	60% (0.7 mm)	5	2.5 - 4.0
	1200	14	S	0.3	2	1007			27	87%	62% (0.6 mm)	6	4.0 - 6.0
	1800	14	S	0.4	2	1006			28	89%	52% (0.5 mm)	7	6.0 - 9.0
06-08-24	0001	12	SSE	0.3	2	1007	30	26	27	91%	64% (0.6 mm)	8	9.0 - 14.0
	0600	13	SSE	0.3	2	1006			26	94%	71% (0.7 mm)	9	Over 14.0
	1200	14	S	0.3	2	1006			27	86%	73% (0.7 mm)		
	1800	14	S	0.3	2	1005			28	89%	70% (0.7 mm)		
07-08-24	0001	11	SSE	0.3	2	1007	30	26	27	90%	68% (0.7 mm)		
	0600	15	SSE	0.3	2	1007			26	92%	66% (0.6 mm)		
	1200	15	S	0.4	2	1008			27	85%	63% (0.6 mm)		
	1800	13	SE	0.3	2	1006			28	89%	61% (0.5 mm)		

04 Aug 24 Sun (Probability 70%)

05 Aug 24 Mon (Probability 60%)

06 Aug 24 Tue (Probability 50%)

07 Aug 24 Wed (Probability 50%)



Significant wave height (m)

MARINE WEATHER FORECAST- 20 NM WEST OF ELEPHANT POINT (Lat 21° 10'N, Long 091° 42' E)

DATE : 31 July to 07 Aug 2024

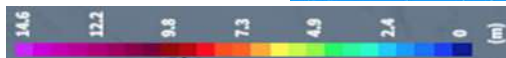
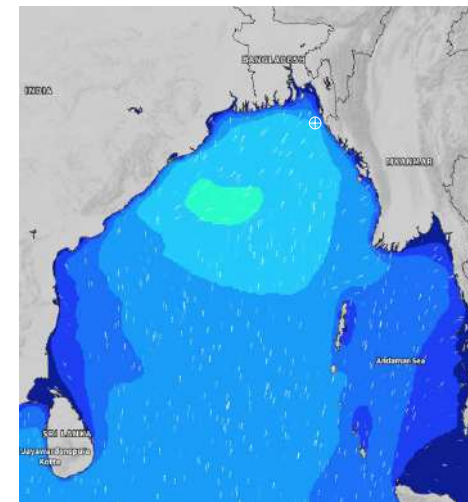
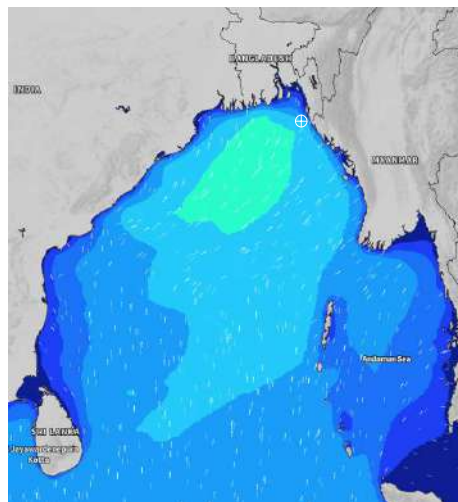
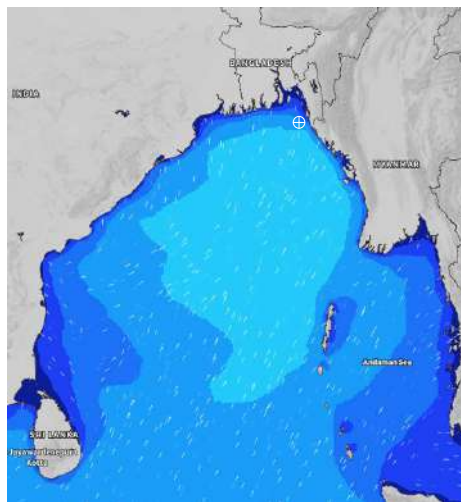
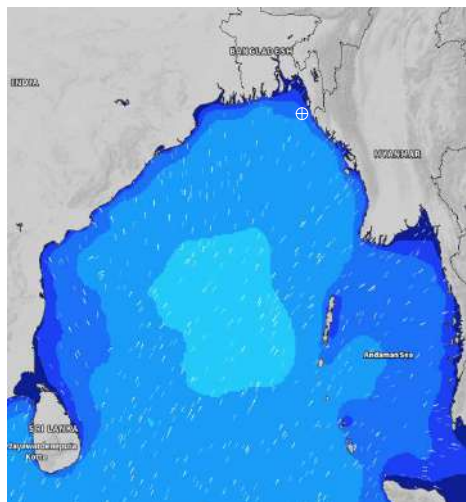
Date	Time	Max Wind Spd (kts)	Wind Direction	Wave Ht (m)	Sea State	Baro Pressure	Air Temp		Sea Surface Temp	Humidity (%)	Prob of Rain (%)	Sea State	Wave Ht (m)
							Max	Min					
31-07-24	0001	14	S	1.7	4	1004	29	26	28	91%	38% (0.4 mm)	0	0
	0600	17	WSW	1.6	4	1002			27	93%	32% (0.1 mm)	1	0 - 0.1
	1200	11	SSW	1.7	4	1003			28	88%	99% (5.5 mm)	2	0.1 - 0.5
	1800	14	SSW	1.5	4	1001			27	89%	82% (2.4 mm)	3	0.5 - 1.25
01-08-24	0001	17	S	1.7	4	1002	29	26	27	92%	96% (5.2 mm)	4	1.25 - 2.5
	0600	16	S	1.8	4	1000			27	94%	92% (2.5 mm)	5	2.5 - 4.0
	1200	18	S	1.9	4	1001			28	87%	99% (3.2 mm)	6	4.0 - 6.0
	1800	20	S	1.9	4	1001			27	88%	85% (2.1 mm)	7	6.0 - 9.0
02-08-24	0001	21	S	2.0	4	1002	29	26	27	91%	94% (5.1 mm)	8	9.0 - 14.0
	0600	21	S	2.1	4	1001			27	94%	98% (5.3 mm)	9	Over 14.0
	1200	22	S	2.1	4	1002			28	87%	95% (2.2 mm)		
	1800	20	SSE	2.2	4	1003			27	89%	82% (1.8 mm)		
03-08-24	0001	21	SSE	2.2	4	1005	29	26	27	92%	81% (1.2 mm)		
	0600	21	SSE	2.2	4	1004			27	93%	63% (0.7 mm)		
	1200	22	SSE	2.2	4	1006			28	88%	85% (1.1 mm)		
	1800	22	SE	2.2	4	1004			27	89%	46% (0.4 mm)		

31 July 24 Wed (Probability 98%)

01 Aug 24 Thu (Probability 95%)

02 Aug 24 Fri (Probability 90%)

03 Aug 24 Sat (Probability 80%)



Significant wave height (m)

MARINE WEATHER FORECAST- 20 NM WEST OF ELEPHANT POINT (Lat 21° 10'N, Long 091° 42' E)

DATE : 31 July to 07 Aug 2024

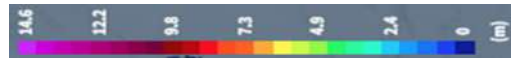
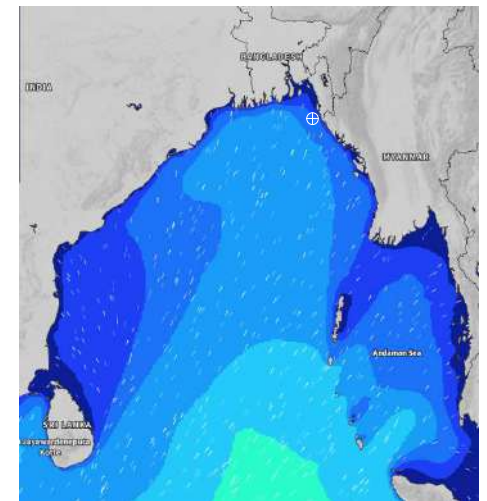
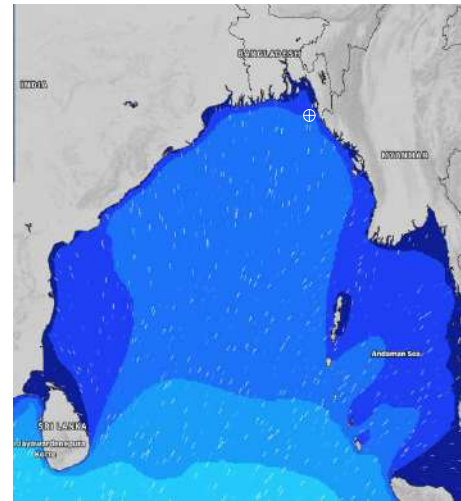
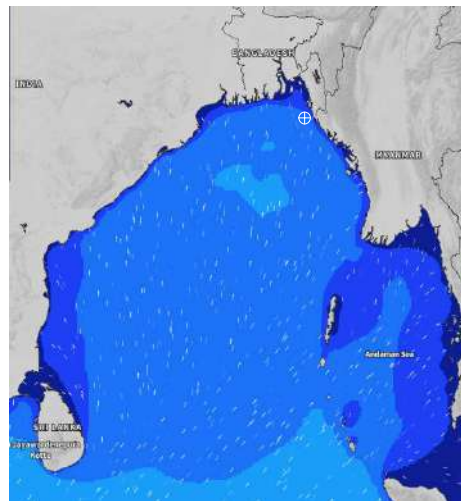
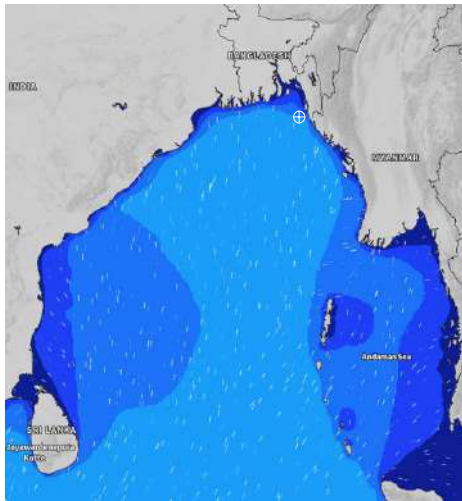
Date	Time	Max Wind Spd (kts)	Wind Direction	Wave Ht (m)	Sea State	Baro Pressure	Air Temp		Sea Surface Temp	Humidity (%)	Prob of Rain (%)	Sea State	Wave Ht (m)
							Max	Min					
04-08-24	0001	20	SSE	2.1	4	1007	29	26	28	90%	74% (0.8 mm)	0	0
	0600	19	SE	1.9	4	1007			27	93%	76% (0.8 mm)	1	0 - 0.1
	1200	19	SSE	1.8	4	1008			28	86%	65% (0.7 mm)	2	0.1 - 0.5
	1800	17	SSE	1.7	4	1006			27	89%	43% (0.4 mm)	3	0.5 - 1.25
05-08-24	0001	15	SSE	1.6	4	1008	29	26	27	91%	47% (0.5 mm)	4	1.25 - 2.5
	0600	14	SEE	1.4	4	1008			27	94%	65% (0.7 mm)	5	2.5 - 4.0
	1200	14	SSE	1.3	4	1008			28	85%	62% (0.6 mm)	6	4.0 - 6.0
	1800	12	S	1.2	3	1006			28	89%	56% (0.5 mm)	7	6.0 - 9.0
06-08-24	0001	12	S	1.2	3	1007	29	26	27	90%	65% (0.6 mm)	8	9.0 - 14.0
	0600	11	SSE	1.2	3	1006			27	95%	74% (0.7 mm)	9	Over 14.0
	1200	13	SSE	1.1	3	1006			28	86%	78% (0.7 mm)		
	1800	14	SSW	1.1	3	1005			28	89%	74% (0.7 mm)		
07-08-24	0001	12	SSW	1.2	3	1007	29	26	28	90%	65% (0.7 mm)		
	0600	13	SSW	1.3	4	1007			27	92%	66% (0.6 mm)		
	1200	14	SW	1.3	4	1006			28	84%	63% (0.6 mm)		
	1800	12	SSW	1.3	4	1005			28	88%	60% (0.5 mm)		

04 Aug 24 Sun (Probability 70%)

05 Aug 24 Mon (Probability 60%)

06 Aug 24 Tue (Probability 50%)

07 Aug 24 Wed (Probability 50%)



Significant wave height (m)

MARINE WEATHER FORECAST- 15 NM WEST OF ST. MARTIN'S LIGHT HOUSE (Lat 20° 37'N, Long 092° 03' E)

DATE : 31 July to 07 Aug 2024

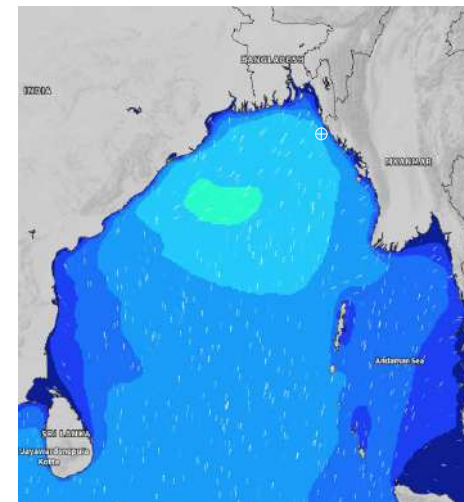
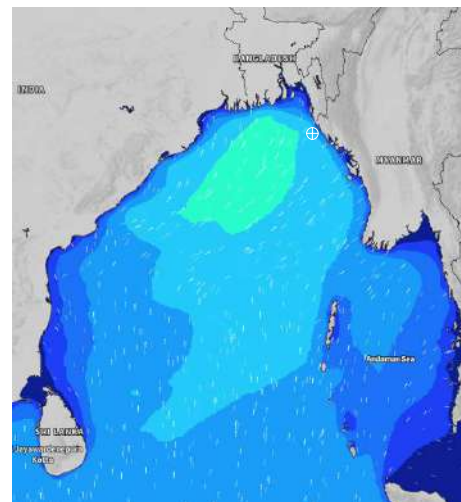
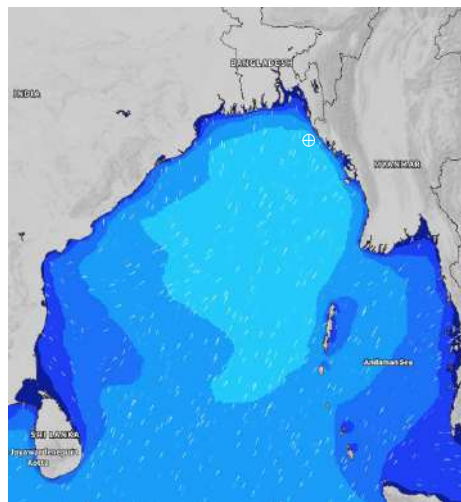
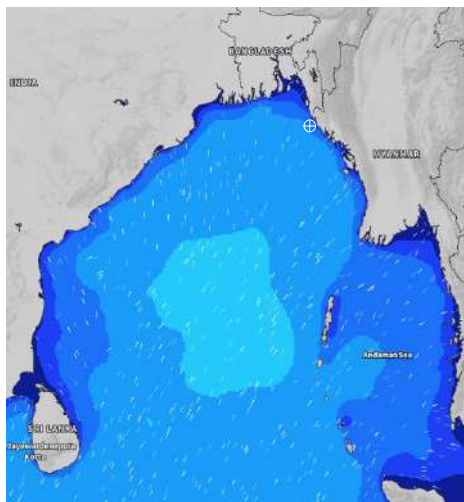
Date	Time	Max Wind Spd (kts)	Wind Direction	Wave Ht (m)	Sea State	Baro Pressure	Air Temp		Sea Surface Temp	Humidity (%)	Prob of Rain(%)	Sea State	Wave Ht (m)
							Max	Min					
31-07-24	0001	13	S	2.0	4	1005	29	26	28	92%	41% (0.4 mm)	0	0
	0600	19	SW	2.0	4	1002			27	94%	35% (0.1 mm)	1	0 - 0.1
	1200	12	SW	1.9	4	1004			28	86%	98% (5.5 mm)	2	0.1 - 0.5
	1800	18	SSW	2.0	4	1001			28	89%	80% (2.4 mm)	3	0.5 - 1.25
01-08-24	0001	18	SSW	2.1	4	1004	29	26	27	91%	95% (5.2 mm)	4	1.25 - 2.5
	0600	18	SSW	2.2	4	1001			27	93%	91% (2.5 mm)	5	2.5 - 4.0
	1200	20	SSW	2.4	4	1002			28	85%	98% (3.2 mm)	6	4.0 - 6.0
	1800	21	SSW	2.6	5	1001			27	88%	84% (2.1 mm)	7	6.0 - 9.0
02-08-24	0001	22	S	2.6	5	1004	29	26	27	92%	95% (5.1 mm)	8	9.0 - 14.0
	0600	22	S	2.7	5	1002			27	94%	99% (5.3 mm)	9	Over 14.0
	1200	21	S	2.6	5	1003			28	84%	93% (2.2 mm)		
	1800	22	SSE	2.7	5	1003			27	87%	80% (1.8 mm)		
03-08-24	0001	17	SSE	2.6	5	1006	29	26	27	90%	80% (1.2 mm)		
	0600	17	SSE	2.6	5	1005			27	93%	64% (0.7 mm)		
	1200	18	SE	2.5	4	1007			28	85%	85% (1.1 mm)		
	1800	19	SSE	2.6	5	1005			27	89%	42% (0.4 mm)		

31 July 24 Wed (Probability 98%)

01 Aug 24 Thu (Probability 95%)

02 Aug 24 Fri (Probability 90%)

03 Aug 24 Sat (Probability 80%)



Significant wave height (m)

MARINE WEATHER FORECAST- 15 NM WEST OF ST. MARTIN'S LIGHT HOUSE (Lat 20° 37'N, Long 092° 03' E)

DATE : 31 July to 07 Aug 2024

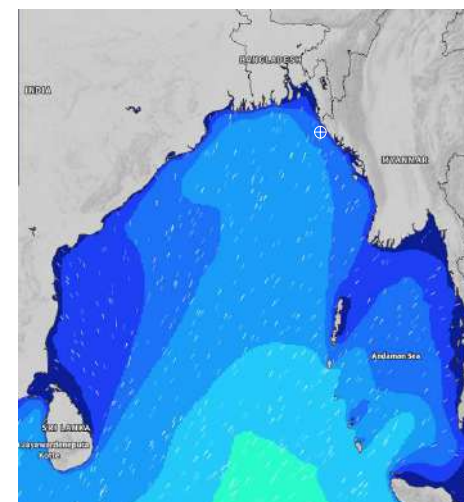
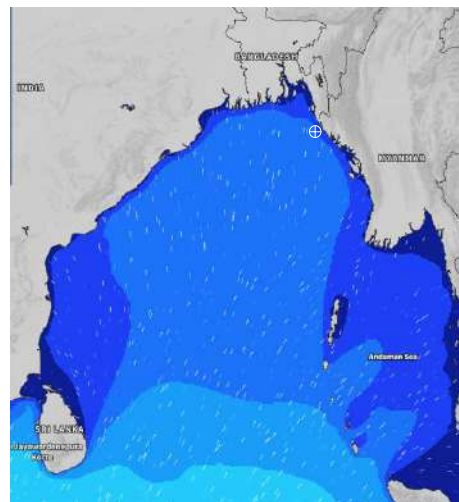
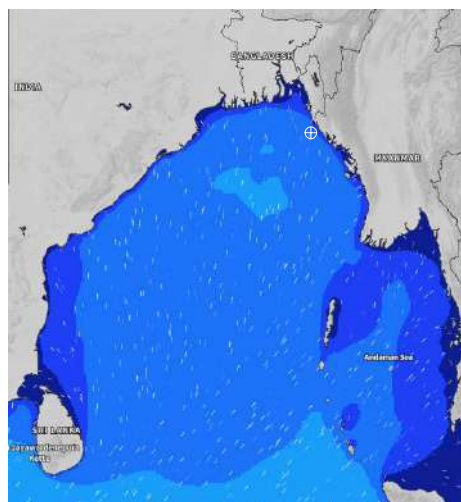
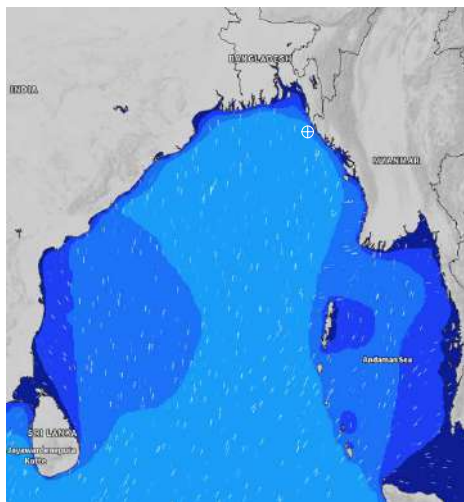
Date	Time	Max Wind Spd (kts)	Wind Direction	Wave Ht (m)	Sea State	Baro Pressure	Air Temp		Sea Surface Temp	Humidity (%)	Prob of Rain (%)	Sea State	Wave Ht (m)
							Max	Min					
04-08-24	0001	17	SSE	2.4	4	1008	29	26	27	92%	70% (0.7 mm)	0	0
	0600	13	SSE	2.2	4	1007			27	94%	71% (0.7 mm)	1	0 - 0.1
	1200	14	SSE	2.1	4	1009			28	81%	63% (0.6 mm)	2	0.1 - 0.5
	1800	14	S	2.0	4	1006			27	86%	45% (0.5 mm)	3	0.5 - 1.25
05-08-24	0001	15	S	1.9	4	1008	29	26	27	89%	46% (0.4 mm)	4	1.25 - 2.5
	0600	9	S	1.7	4	1007			27	91%	61% (0.6 mm)	5	2.5 - 4.0
	1200	8	SSE	1.6	4	1009			28	78%	64% (0.6 mm)	6	4.0 - 6.0
	1800	9	SSW	1.5	4	1007			28	82%	52% (0.5 mm)	7	6.0 - 9.0
06-08-24	0001	11	SSW	1.5	4	1008	29	26	28	88%	63% (0.6 mm)	8	9.0 - 14.0
	0600	8	S	1.4	4	1006			27	90%	75% (0.7 mm)	9	Over 14.0
	1200	10	S	1.4	4	1008			28	79%	76% (0.7 mm)		
	1800	13	SW	1.4	4	1005			28	87%	77% (0.8 mm)		
07-08-24	0001	12	SSW	1.4	4	1007	29	26	28	89%	65% (0.6 mm)		
	0600	13	SW	1.5	4	1007			27	90%	62% (0.6 mm)		
	1200	14	SSW	1.6	4	1008			28	76%	64% (0.6 mm)		
	1800	13	SW	1.5	4	1006			28	81%	53% (0.5 mm)		

04 Aug 24 Sun (Probability 70%)

05 Aug 24 Mon (Probability 60%)

06 Aug 24 Tue (Probability 50%)

07 Aug 24 Wed (Probability 50%)



Significant wave height (m)

MARINE WEATHER FORECAST- 40 NM ESE OF PAYRA FAIRWAY (Lat 21° 07' N, Long 090° 45' E)

DATE : 31 July to 07 Aug 2024

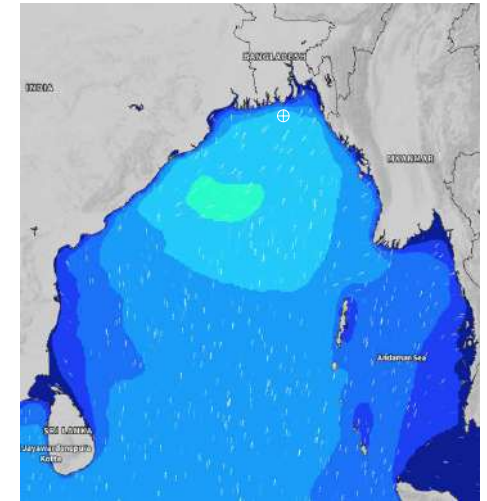
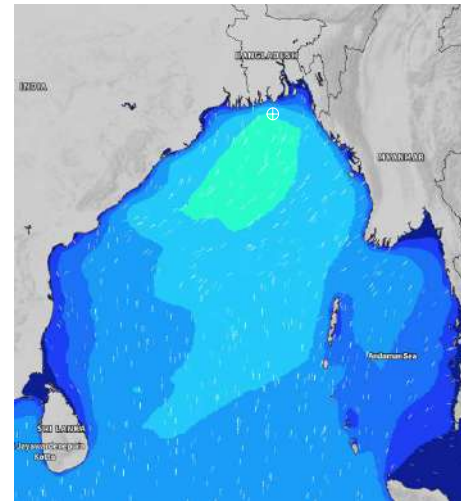
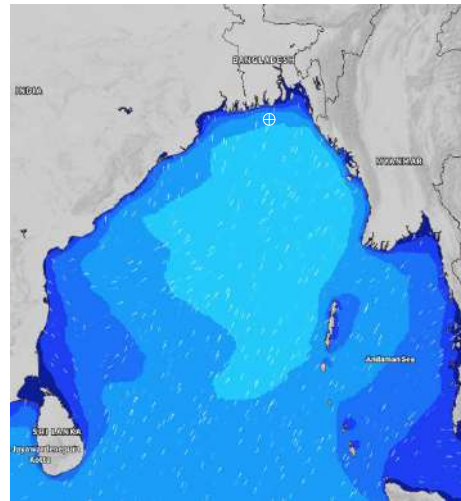
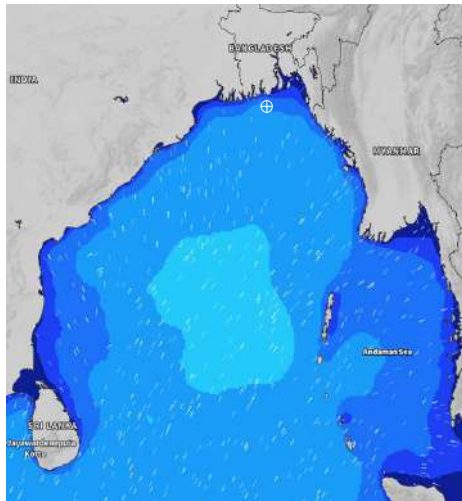
Date	Time	Max Wind Spd (kts)	Wind Direction	Wave Ht (m)	Sea State	Baro Pressure	Air Temp		Sea Surface Temp	Humidity (%)	Prob of Rain (%)	Sea State	Wave Ht (m)
							Max	Min					
31-07-24	0001	11	SW	2.0	4	1003	30	26	28	93%	35% (0.2 mm)	0	0
	0600	18	SW	2.1	4	1002			27	94%	26% (0.0 mm)	1	0 - 0.1
	1200	14	SW	1.9	4	1003			28	88%	83% (0.8 mm)	2	0.1 - 0.5
	1800	17	SW	2.0	4	1000			28	89%	70% (0.7 mm)	3	0.5 - 1.25
01-08-24	0001	15	SSW	2.1	4	1001	29	26	27	91%	93% (4.5 mm)	4	1.25 - 2.5
	0600	18	SSW	2.1	4	1000			28	94%	93% (4.8 mm)	5	2.5 - 4.0
	1200	20	SSW	2.6	5	1000			28	88%	98% (3.8 mm)	6	4.0 - 6.0
	1800	21	SSW	2.6	5	999			28	89%	78% (1.5 mm)	7	6.0 - 9.0
02-08-24	0001	22	S	2.8	5	1001	29	26	28	90%	89% (2.1 mm)	8	9.0 - 14.0
	0600	22	S	2.8	5	1000			27	94%	98% (2.5 mm)	9	Over 14.0
	1200	22	S	2.9	5	1001			28	87%	94% (2.4 mm)		
	1800	22	S	2.9	5	1001			27	90%	64% (0.6 mm)		
03-08-24	0001	21	S	2.9	5	1003	29	26	27	92%	83% (0.8 mm)		
	0600	21	S	2.8	5	1003			27	94%	92% (1.5 mm)		
	1200	20	SW	2.8	5	1005			28	86%	83% (0.8 mm)		
	1800	20	S	2.9	5	1002			27	89%	47% (0.5 mm)		

31 July 24 Wed (Probability 98%)

01 Aug 24 Thu (Probability 95%)

02 Aug 24 Fri (Probability 90%)

03 Aug 24 Sat (Probability 80%)



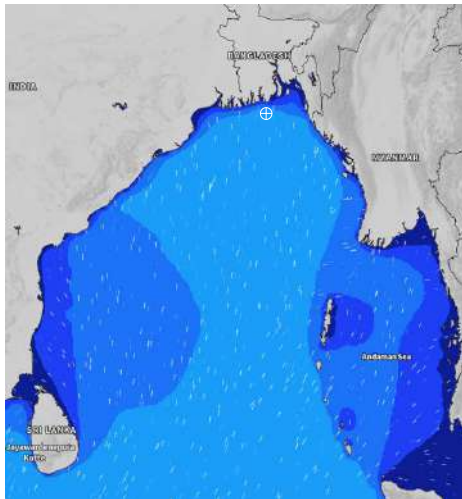
Significant wave height (m)

MARINE WEATHER FORECAST- 40 NM ESE OF PAYRA FAIRWAY (Lat 21° 07' N, Long 090° 45' E)

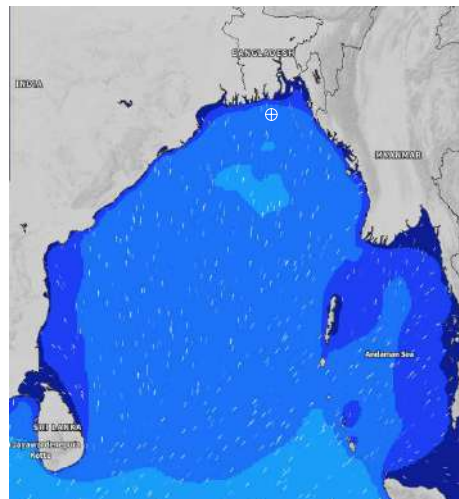
DATE : 31 July to 07 Aug 2024

Date	Time	Max Wind Spd (kts)	Wind Direction	Wave Ht (m)	Sea State	Baro Pressure	Air Temp		Sea Surface Temp	Humidity (%)	Prob of Rain (%)	Sea State	Wave Ht (m)
							Max	Min					
04-08-24	0001	19	S	2.6	5	1006	29	26	28	88%	65% (0.6 mm)	0	0
	0600	14	S	2.4	4	1006			27	91%	81% (0.8 mm)	1	0 - 0.1
	1200	13	S	2.3	4	1007			28	86%	68% (0.7 mm)	2	0.1 - 0.5
	1800	13	S	2.2	4	1005			28	85%	38% (0.2 mm)	3	0.5 - 1.25
05-08-24	0001	11	SSW	1.9	4	1007	29	26	28	90%	61% (0.6 mm)	4	1.25 - 2.5
	0600	12	SSW	1.8	4	1007			27	92%	75% (0.7 mm)	5	2.5 - 4.0
	1200	11	SSW	1.7	4	1007			28	78%	77% (0.7 mm)	6	4.0 - 6.0
	1800	12	SSW	1.6	4	1005			28	88%	24% (0.1 mm)	7	6.0 - 9.0
06-08-24	0001	11	SW	1.6	4	1007	29	26	28	91%	76% (0.7 mm)	8	9.0 - 14.0
	0600	10	SSW	1.5	4	1006			27	93%	74% (0.7 mm)	9	Over 14.0
	1200	12	SSW	1.4	4	1006			28	86%	71% (0.7 mm)		
	1800	14	SSW	1.5	4	1005			29	89%	41% (0.4 mm)		
07-08-24	0001	15	SSW	1.6	4	1007	29	26	28	90%	68% (0.6 mm)		
	0600	17	SSW	1.8	4	1006			27	92%	66% (0.6 mm)		
	1200	17	SSW	1.9	4	1006			28	78%	64% (0.6 mm)		
	1800	18	SSW	1.8	4	1005			29	89%	59% (0.5 mm)		

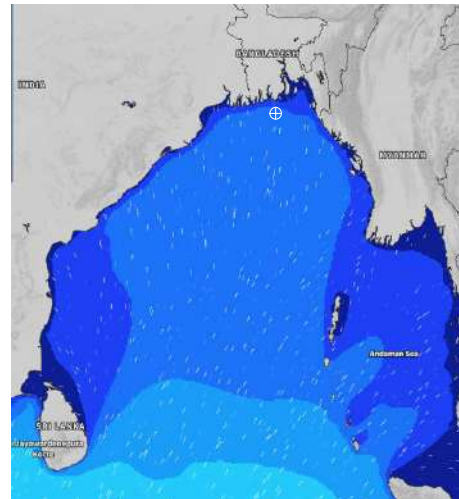
04 Aug 24 Sun (Probability 70%)



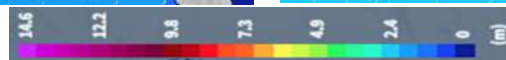
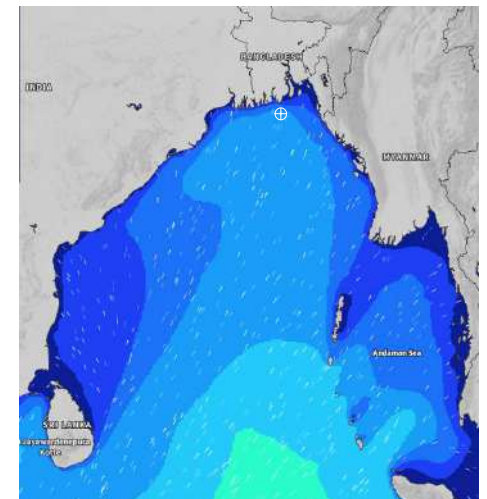
05 Aug 24 Mon (Probability 60%)



06 Aug 24 Tue (Probability 50%)



07 Aug 24 Wed (Probability 50%)



Significant wave height (m)

MARINE WEATHER FORECAST- 10 NM SOUTH OF MONGLA FAIRWAY (Lat 21° 16'N, Long 089° 34'E)

DATE : 31 July to 07 Aug 2024

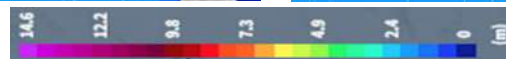
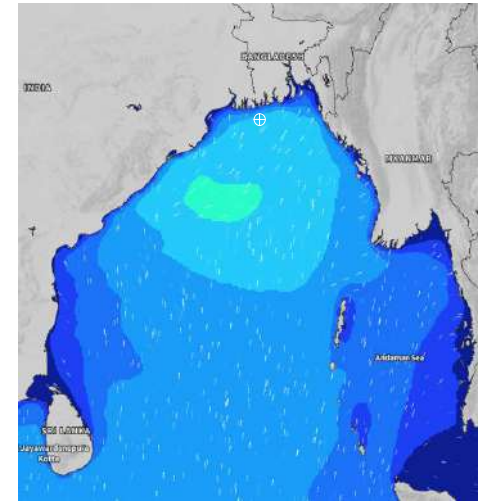
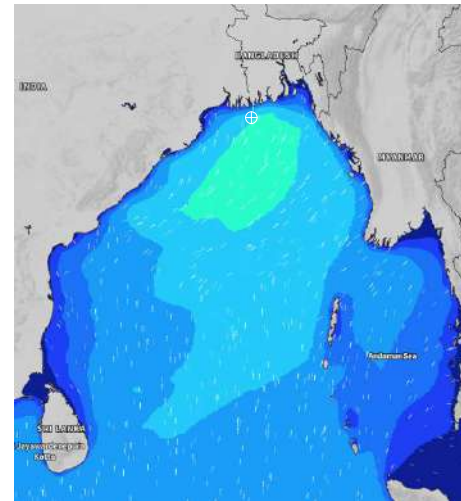
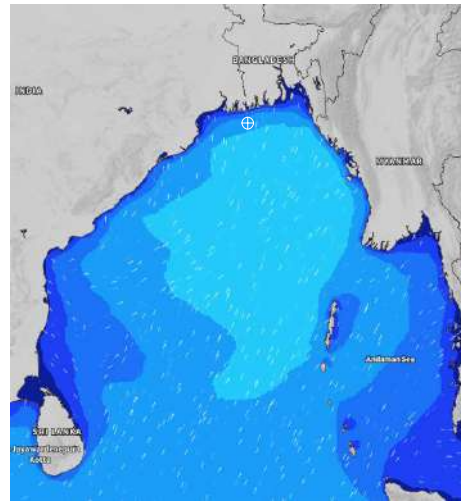
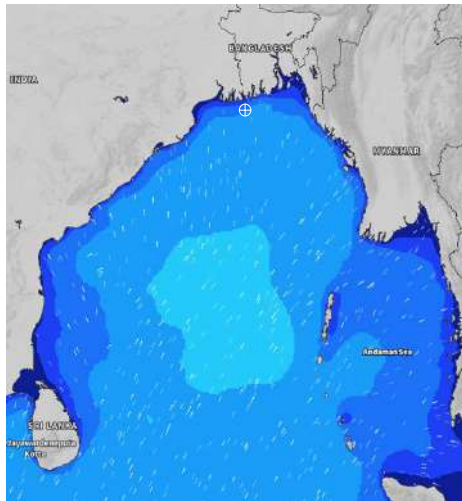
Date	Time	Max Wind Spd (kts)	Wind Direction	Wave Ht (m)	Sea State	Baro Pressure	Air Temp		Sea Surface Temp	Humidity (%)	Prob of Rain (%)	Sea State	Wave Ht (m)
							Max	Min					
31-07-24	0001	16	SW	2.1	4	1003	30	27	28	85%	35% (0.2 mm)	0	0
	0600	15	SSW	2.0	4	1001			28	89%	24% (0.1 mm)	1	0 - 0.1
	1200	16	SSW	2.0	4	1002			29	76%	46% (0.5 mm)	2	0.1 - 0.5
	1800	18	SW	2.0	4	999			28	88%	66% (0.6 mm)	3	0.5 - 1.25
01-08-24	0001	16	SW	2.0	4	1000	29	26	28	89%	89% (0.8 mm)	4	1.25 - 2.5
	0600	16	SW	1.9	4	999			28	90%	98% (2.1 mm)	5	2.5 - 4.0
	1200	18	SW	2.1	4	998			29	74%	89% (1.3 mm)	6	4.0 - 6.0
	1800	21	SSW	2.6	5	997			28	86%	80% (0.8 mm)	7	6.0 - 9.0
02-08-24	0001	22	SSW	2.6	5	999	29	26	28	88%	91% (1.2 mm)	8	9.0 - 14.0
	0600	21	SSW	2.7	5	998			28	90%	92% (1.3 mm)	9	Over 14.0
	1200	22	SSW	2.8	5	999			29	75%	91% (1.1 mm)		
	1800	22	S	2.8	5	998			28	82%	32% (0.1 mm)		
03-08-24	0001	21	S	2.8	5	1001	29	26	28	90%	42% (0.4 mm)		
	0600	21	S	2.8	5	1001			28	91%	52% (0.5 mm)		
	1200	19	SW	2.7	5	1002			29	76%	89% (1.1 mm)		
	1800	20	SSW	2.8	5	1001			28	88%	15% (0.0 mm)		

31 July 24 Wed (Probability 98%)

01 Aug 24 Thu (Probability 95%)

02 Aug 24 Fri (Probability 90%)

03 Aug 24 Sat (Probability 80%)



Significant wave height (m)

MARINE WEATHER FORECAST- 10 NM SOUTH OF MONGLA FAIRWAY (Lat 21° 16'N, Long 089° 34'E)

DATE : 31 July to 07 Aug 2024

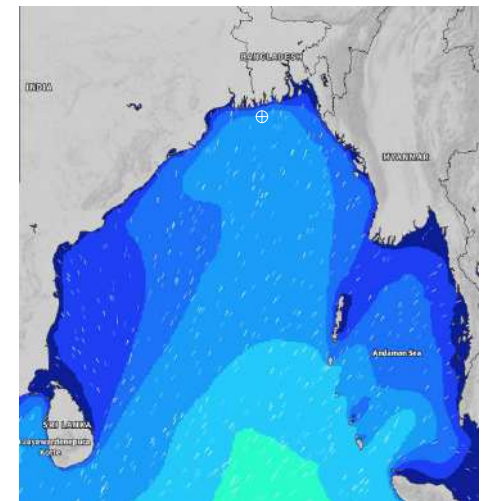
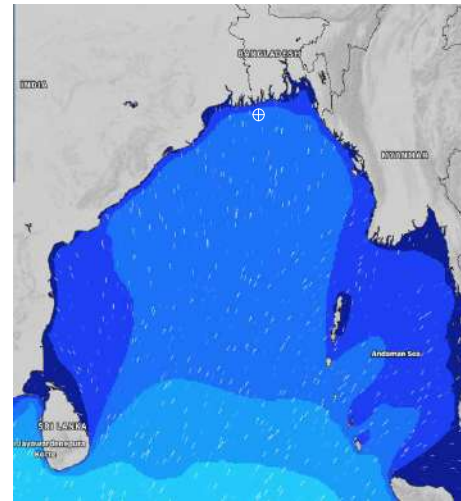
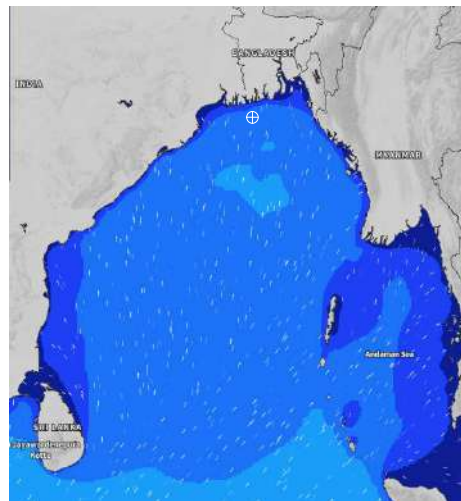
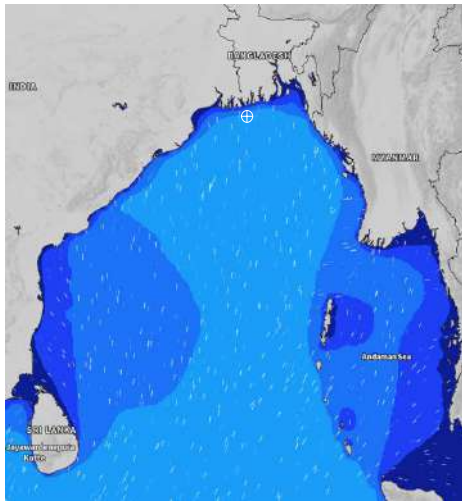
Date	Time	Max Wind Spd (kts)	Wind Direction	Wave Ht (m)	Sea State	Baro Pressure	Air Temp		Sea Surface Temp	Humidity (%)	Prob of Rain (%)	Sea State	Wave Ht (m)
							Max	Min					
04-08-24	0001	17	S	2.4	4	1005	29	26	28	89%	32% (0.2 mm)	0	0
	0600	14	SSW	2.3	4	1005			27	91%	36% (0.2 mm)	1	0 - 0.1
	1200	9	SSW	2.0	4	1006			29	76%	80% (0.8 mm)	2	0.1 - 0.5
	1800	11	SSW	1.9	4	1004			28	87%	15% (0.0 mm)	3	0.5 - 1.25
05-08-24	0001	12	S	1.8	4	1007	30	27	28	88%	37% (0.2 mm)	4	1.25 - 2.5
	0600	12	SSW	1.7	4	1006			27	92%	36% (0.2 mm)	5	2.5 - 4.0
	1200	11	SW	1.6	4	1007			28	78%	83% (0.8 mm)	6	4.0 - 6.0
	1800	10	WSW	1.5	4	1005			29	89%	16% (0.0 mm)	7	6.0 - 9.0
06-08-24	0001	11	SSW	1.4	4	1006	30	27	28	89%	41% (0.4 mm)	8	9.0 - 14.0
	0600	12	SW	1.4	4	1005			27	93%	76% (0.7 mm)	9	Over 14.0
	1200	14	SSW	1.5	4	1005			28	77%	73% (0.7 mm)		
	1800	15	SSW	1.5	4	1004			29	88%	18% (0.0 mm)		
07-08-24	0001	17	SSW	1.6	4	1006	30	27	28	90%	44% (0.4 mm)		
	0600	18	SSW	1.7	4	1005			27	92%	66% (0.6 mm)		
	1200	19	SW	1.8	4	1006			29	78%	64% (0.6 mm)		
	1800	18	SSW	1.8	4	1004			29	89%	24% (0.0 mm)		

04 Aug 24 Sun (Probability 70%)

05 Aug 24 Mon (Probability 60%)

06 Aug 24 Tue (Probability 50%)

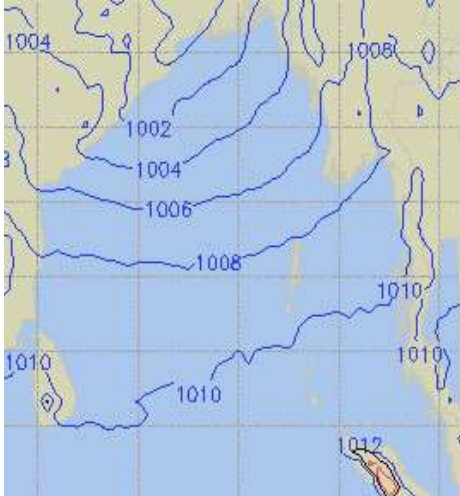
07 Aug 24 Wed (Probability 50%)



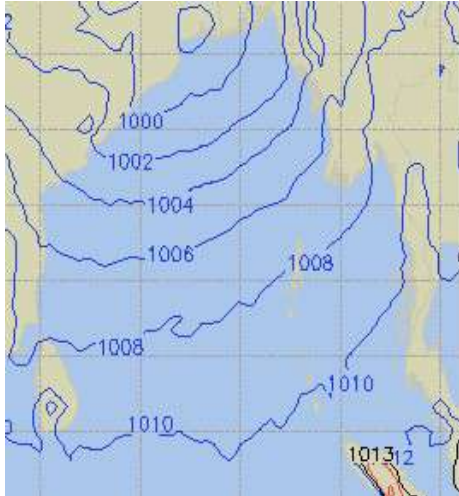
Significant wave height (m)

PREDICTED SURFACE PRESSURE FORECAST (31 July to 06 Aug 2024)

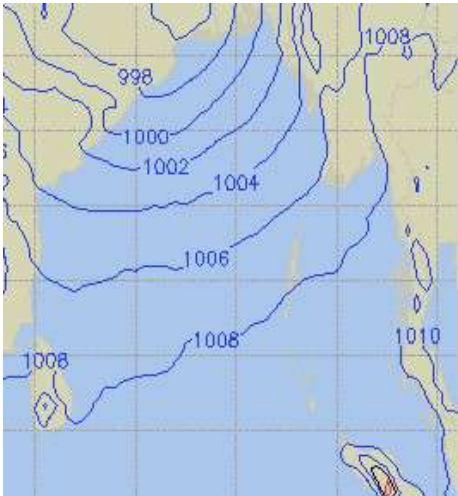
31 July 24 Wed (Probability 98%)



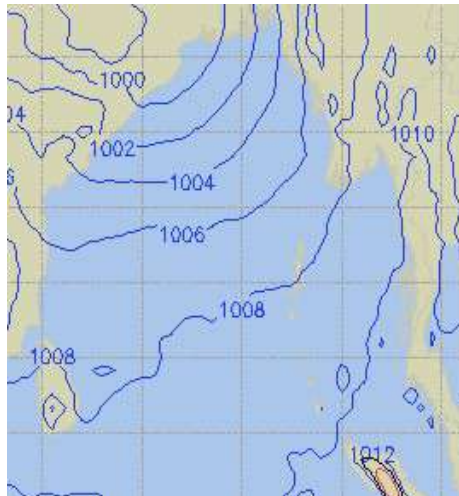
01 Aug 24 Thu (Probability 95%)



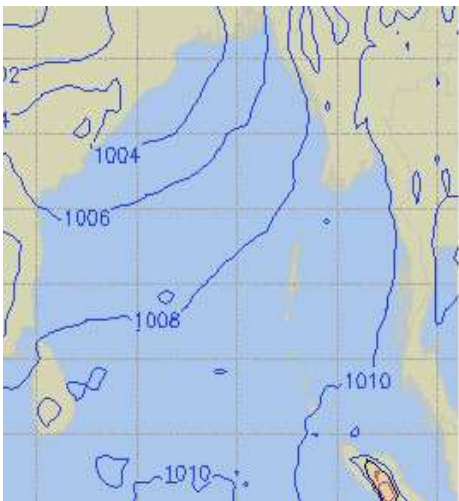
02 Aug 24 Fri (Probability 90%)



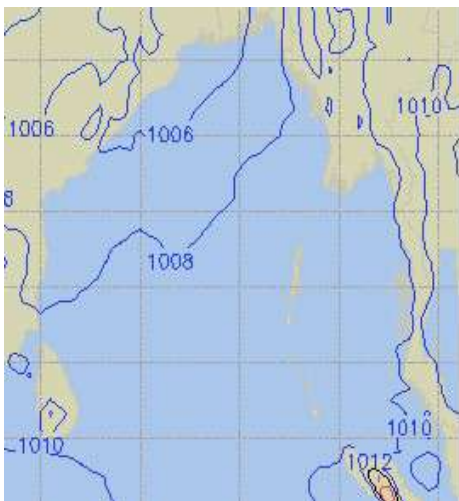
03 Aug 24 Sat (Probability 80%)



04 Aug 24 Sun (Probability 70%)



05 Aug 24 Mon (Probability 60%)



06 Aug 24 Tue (Probability 50%)

