

MARINE WEATHER FORECAST- NEAR AUTHORITY BUOY (Lat 22° 12'N, Long 091° 38'E)

DATE : 31 May to 07 June 2024

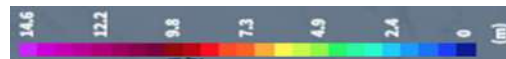
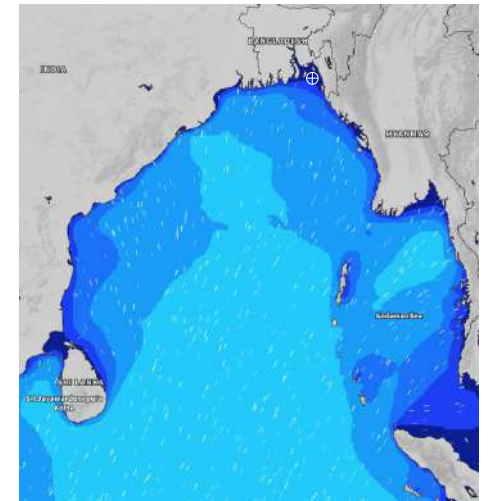
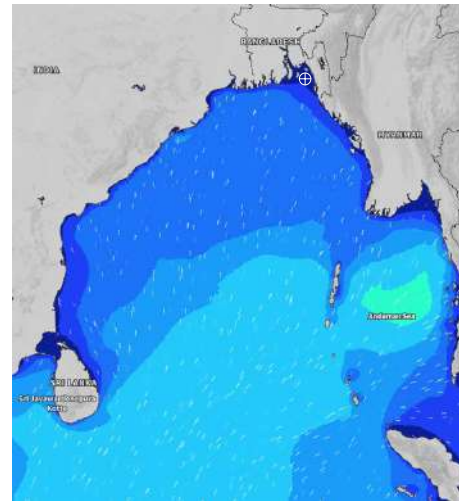
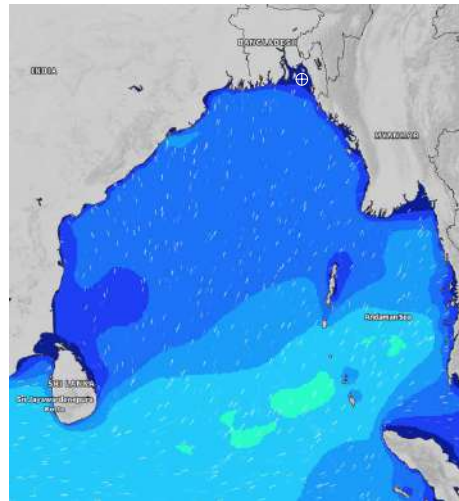
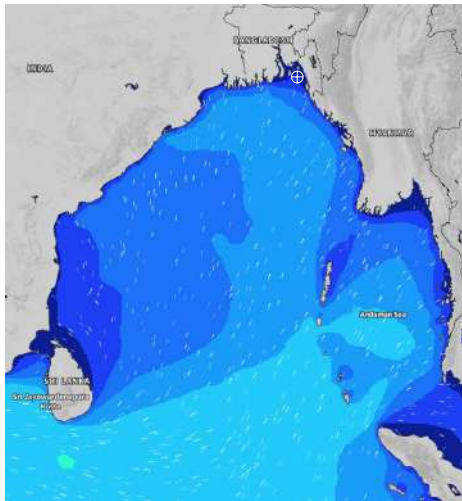
Date	Time	Max Wind Spd (kts)	Wind Direction	Wave Ht (m)	Sea State	Baro Pressure	Air Temp		Sea Surface Temp	Humidity (%)	Prob of Rain (%)	Sea State	Wave Ht (m)
							Max	Min					
31-05-24	0001	17	SSE	0.3	2	1005	32	28	30	89%	24% (0.1 mm)	0	0
	0600	20	SSE	0.4	2	1004			29	90%	53% (3.0 mm)	1	0 - 0.1
	1200	14	S	0.3	2	1006			30	83%	40% (2.5 mm)	2	0.1 - 0.5
	1800	15	SSW	0.3	2	1003			30	88%	32% (0.3 mm)	3	0.5 - 1.25
01-06-24	0001	13	S	0.2	2	1005	32	28	30	88%	41% (0.4 mm)	4	1.25 - 2.5
	0600	16	SSE	0.3	2	1004			29	93%	50% (0.2 mm)	5	2.5 - 4.0
	1200	12	SSW	0.3	2	1005			30	86%	34% (0.2 mm)	6	4.0 - 6.0
	1800	13	SSW	0.2	2	1003			30	89%	19% (0.0 mm)	7	6.0 - 9.0
02-06-24	0001	13	SSW	0.2	2	1006	32	28	30	90%	18% (0.0 mm)	8	9.0 - 14.0
	0600	13	SSE	0.3	2	1005			29	92%	23% (0.0 mm)	9	Over 14.0
	1200	11	SSW	0.2	2	1006			30	82%	24% (0.0 mm)		
	1800	14	SSW	0.2	2	1003			30	88%	15% (0.0 mm)		
03-06-24	0001	17	SSW	0.3	2	1005	32	28	30	91%	16% (0.0 mm)		
	0600	16	SSE	0.3	2	1004			29	93%	28% (0.0 mm)		
	1200	15	SE	0.3	2	1005			30	82%	24% (0.0 mm)		
	1800	14	SSW	0.3	2	1003			30	85%	17% (0.0 mm)		

31 May 24 Fri (Probability 98%)

01 June 24 Sat (Probability 95%)

02 June 24 Sun (Probability 90%)

03 June 24 Mon (Probability 80%)



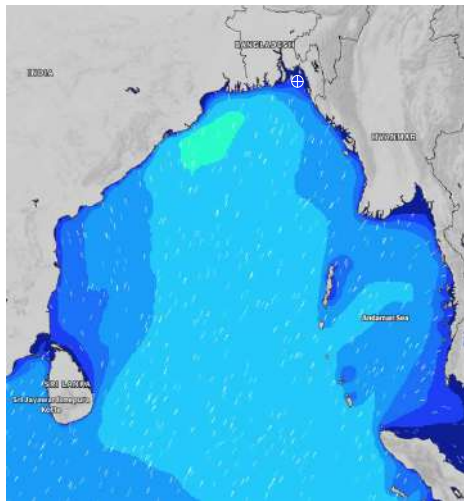
Significant wave height (m)

MARINE WEATHER FORECAST- NEAR AUTHORITY BUOY (Lat 22° 12'N, Long 091° 38'E)

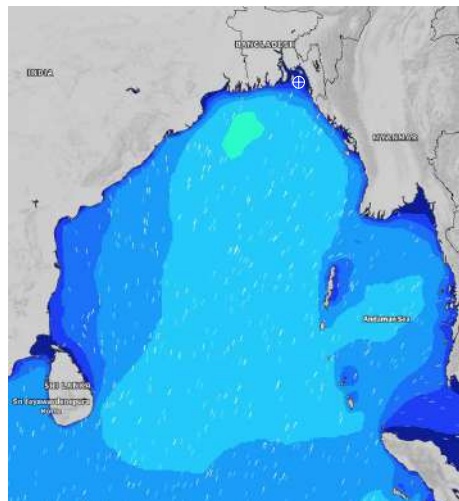
DATE : 31 May to 07 June 2024

Date	Time	Max Wind Spd (kts)	Wind Direction	Wave Ht (m)	Sea State	Baro Pressure	Air Temp		Sea Surface Temp	Humidity (%)	Prob of Rain (%)	Sea State	Wave Ht (m)
							Max	Min					
04-06-24	0001	23	SSE	0.4	2	1004	32	27	29	88%	31% (0.1 mm)	0	0
	0600	22	SSE	0.4	2	1004			29	92%	42% (0.4 mm)	1	0 - 0.1
	1200	20	SSW	0.4	2	1005			230	83%	33% (0.2 mm)	2	0.1 - 0.5
	1800	21	S	0.4	2	1002			29	89%	45% (0.4 mm)	3	0.5 - 1.25
05-06-24	0001	24	SSE	0.4	2	1003	32	27	29	87%	34% (0.2 mm)	4	1.25 - 2.5
	0600	26	SE	0.4	2	1003			29	91%	31% (0.2 mm)	5	2.5 - 4.0
	1200	22	S	0.4	2	1004			30	79%	22% (0.0 mm)	6	4.0 - 6.0
	1800	16	S	0.3	2	1001			29	86%	23% (0.0 mm)	7	6.0 - 9.0
06-06-24	0001	21	SSE	0.3	2	1004	32	27	29	89%	35% (0.2 mm)	8	9.0 - 14.0
	0600	16	SE	0.3	2	1003			29	93%	36% (0.2 mm)	9	Over 14.0
	1200	18	SSW	0.4	2	1004			30	78%	22% (0.0 mm)		
	1800	17	SSW	0.4	2	1002			29	86%	25% (0.0 mm)		
07-06-24	0001	16	SSE	0.3	2	1004	32	27	29	87%	34% (0.1 mm)		
	0600	17	SE	0.3	2	1003			29	92%	36% (0.2 mm)		
	1200	15	SSE	0.3	2	1004			30	76%	22% (0.0 mm)		
	1800	17	SSE	0.3	2	1002			29	89%	23% (0.0 mm)		

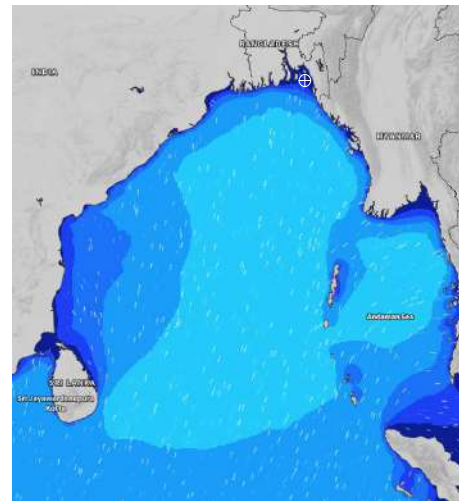
04 June 24 Tue (Probability 70%)



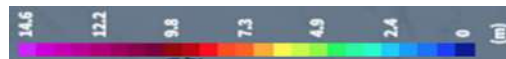
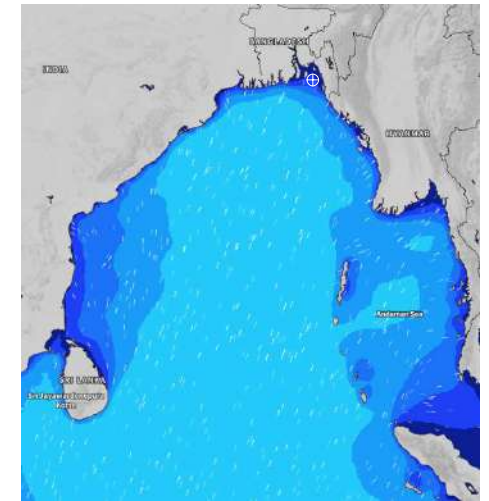
05 June 24 Wed (Probability 60%)



06 June 24 Thu (Probability 50%)



07 June 24 Fri (Probability 50%)



Significant wave height (m)

MARINE WEATHER FORECAST- 20 NM WEST OF ELEPHANT POINT (Lat 21° 10'N, Long 091° 42'E)

DATE : 31 May to 07 June 2024

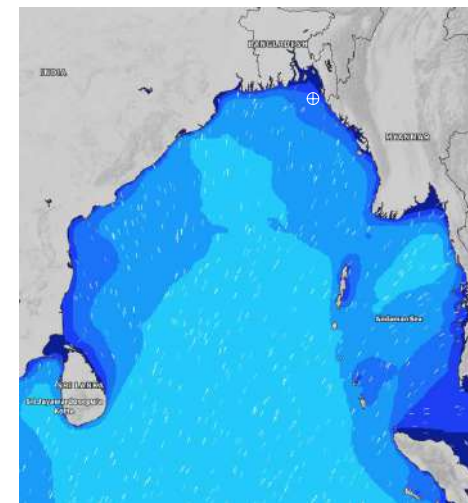
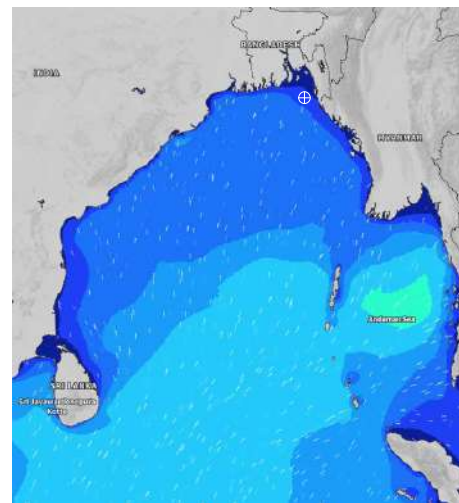
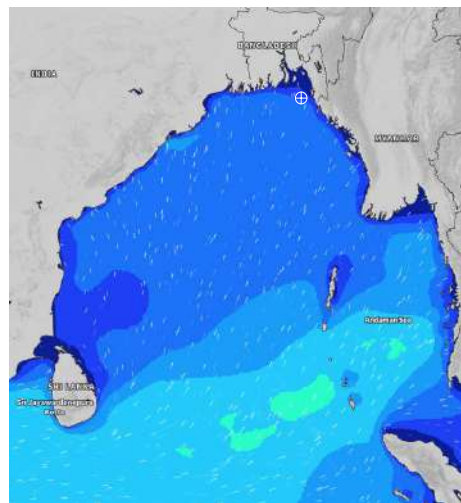
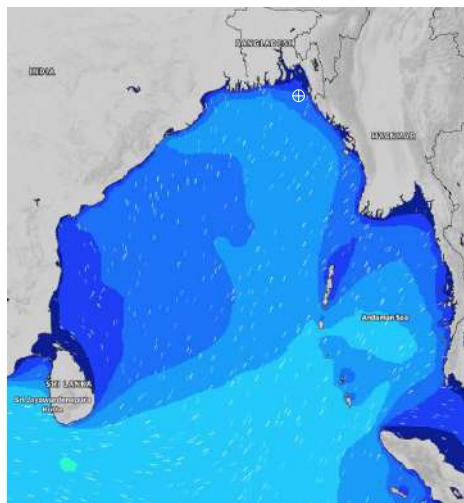
Date	Time	Max Wind Spd (kts)	Wind Direction	Wave Ht (m)	Sea State	Baro Pressure	Air Temp		Sea Surface Temp	Humidity (%)	Prob of Rain (%)	Sea State	Wave Ht (m)
							Max	Min					
31-05-24	0001	14	SSE	1.6	4	1005	32	27	30	90%	24% (0.2 mm)	0	0
	0600	15	S	1.5	4	1005			31	92%	56% (3.5 mm)	1	0 - 0.1
	1200	12	S	1.4	4	1006			3	86%	51% (3.2 mm)	2	0.1 - 0.5
	1800	14	S	1.3	4	1003			30	89%	49% (1.5 mm)	3	0.5 - 1.25
01-06-24	0001	10	SSW	1.3	4	1006	32	27	30	89%	45% (0.5 mm)	4	1.25 - 2.5
	0600	12	SE	1.2	3	1005			30	91%	48% (0.5 mm)	5	2.5 - 4.0
	1200	10	SSW	1.2	3	1006			30	84%	53% (0.5 mm)	6	4.0 - 6.0
	1800	14	SSW	1.1	3	1004			30	88%	45% (0.5 mm)	7	6.0 - 9.0
02-06-24	0001	9	SSW	1.1	3	1006	32	27	30	89%	56% (0.5 mm)	8	9.0 - 14.0
	0600	9	SSE	1.0	3	1005			30	90%	48% (0.5 mm)	9	Over 14.0
	1200	9	S	1.0	3	1006			30	85%	47% (0.5 mm)		
	1800	12	SSW	1.0	3	1004			30	86%	44% (0.4 mm)		
03-06-24	0001	15	SW	1.1	3	1006	32	27	30	89%	55% (0.5 mm)		
	0600	12	S	1.2	3	1004			30	92%	46% (0.4 mm)		
	1200	10	SSW	1.2	3	1006			30	82%	43% (0.4 mm)		
	1800	13	SW	1.1	3	1003			30	88%	45% (0.4 mm)		

31 May 24 Fri (Probability 98%)

01 June 24 Sat (Probability 95%)

02 June 24 Sun (Probability 90%)

03 June 24 Mon (Probability 80%)



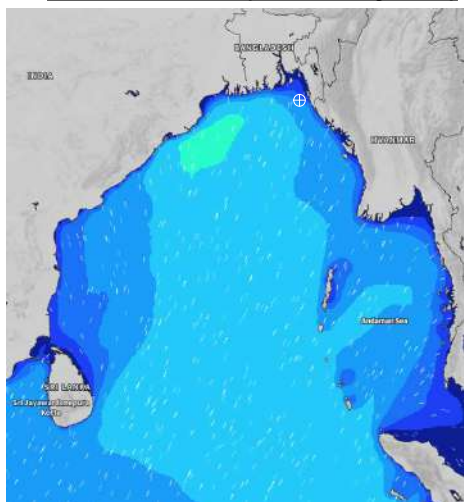
Significant wave height (m)

MARINE WEATHER FORECAST- 20 NM WEST OF ELEPHANT POINT (Lat 21° 10'N, Long 091° 42' E)

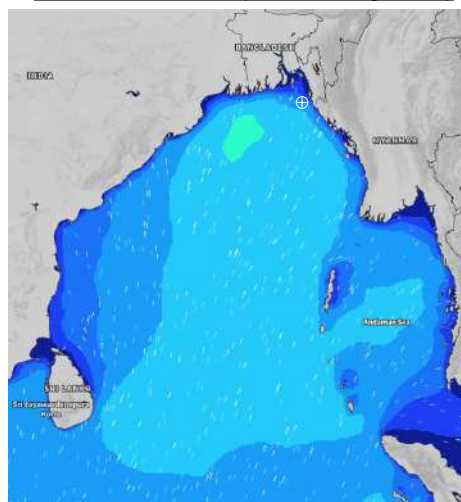
DATE : 31 May to 07 June 2024

Date	Time	Max Wind Spd (kts)	Wind Direction	Wave Ht (m)	Sea State	Baro Pressure	Air Temp		Sea Surface Temp	Humidity (%)	Prob of Rain (%)	Sea State	Wave Ht (m)
							Max	Min					
04-06-24	0001	18	SSE	1.6	4	1004	32	28	30	89%	32% (0.2 mm)	0	0
	0600	17	S	1.7	4	1004			29	92%	41% (0.4 mm)	1	0 - 0.1
	1200	18	SSE	1.7	4	1005			30	82%	33% (0.3 mm)	2	0.1 - 0.5
	1800	17	SSE	1.8	4	1002			30	88%	35% (0.3 mm)	3	0.5 - 1.25
05-06-24	0001	20	SSE	1.9	4	1004	32	28	29	91%	22% (0.0 mm)	4	1.25 - 2.5
	0600	13	SSE	1.9	4	1004			29	93%	23% (0.0 mm)	5	2.5 - 4.0
	1200	16	S	1.9	4	1005			29	75%	25% (0.0 mm)	6	4.0 - 6.0
	1800	12	S	1.9	4	1002			29	87%	26% (0.0 mm)	7	6.0 - 9.0
06-06-24	0001	17	S	1.9	4	1004	32	28	29	90%	34% (0.1 mm)	8	9.0 - 14.0
	0600	11	SE	1.8	4	1003			29	93%	28% (0.1 mm)	9	Over 14.0
	1200	14	S	1.7	4	1004			30	76%	34% (0.1 mm)		
	1800	12	SSW	1.7	4	1002			29	87%	36% (0.1 mm)		
07-06-24	0001	15	S	1.8	4	1004	32	28	29	91%	35% (0.1 mm)		
	0600	13	SSE	1.7	4	1003			29	93%	24% (0.0 mm)		
	1200	14	S	1.7	4	1004			30	77%	32% (0.1 mm)		
	1800	15	SSE	1.8	4	1002			29	89%	33% (0.1 mm)		

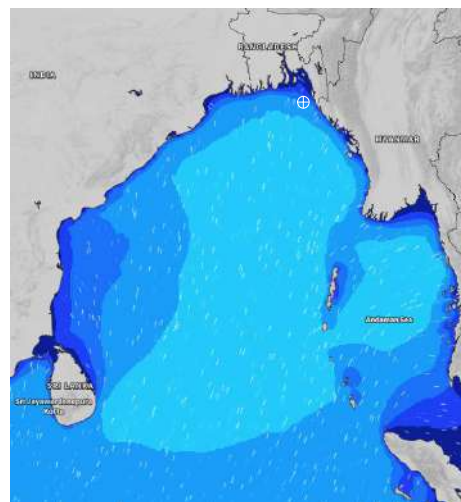
04 June 24 Tue (Probability 70%)



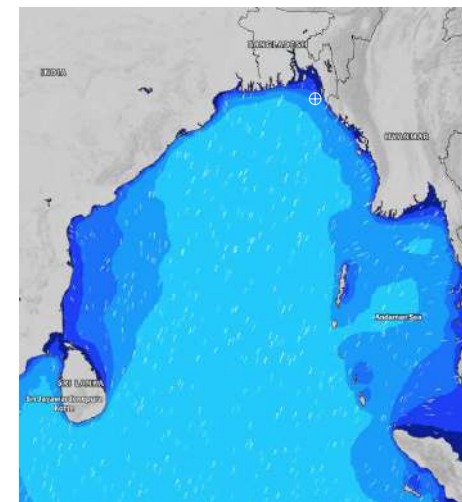
05 June 24 Wed (Probability 60%)



06 June 24 Thu (Probability 50%)



07 June 24 Fri (Probability 50%)



Significant wave height (m)

MARINE WEATHER FORECAST- 15 NM WEST OF ST. MARTIN'S LIGHT HOUSE (Lat 20° 37'N, Long 092° 03' E)

DATE : 31 May to 07 June 2024

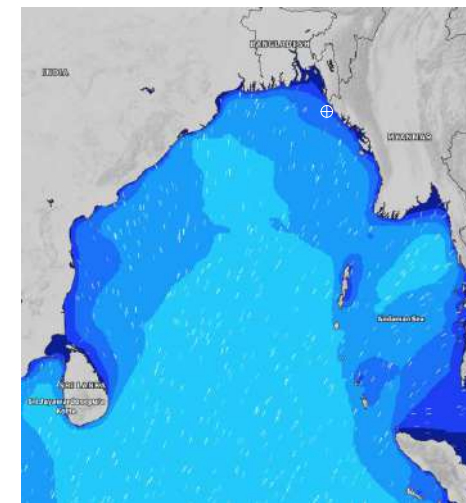
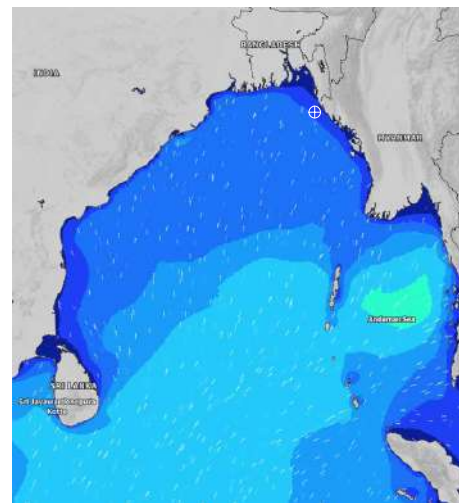
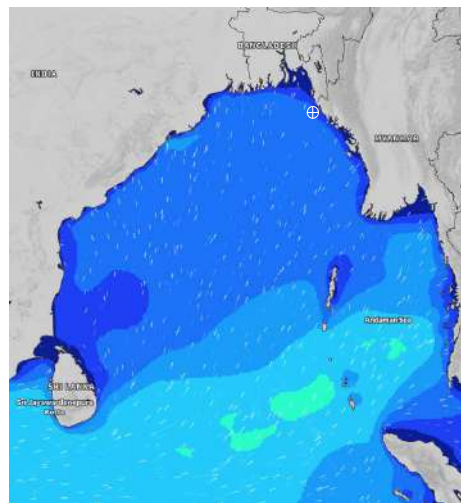
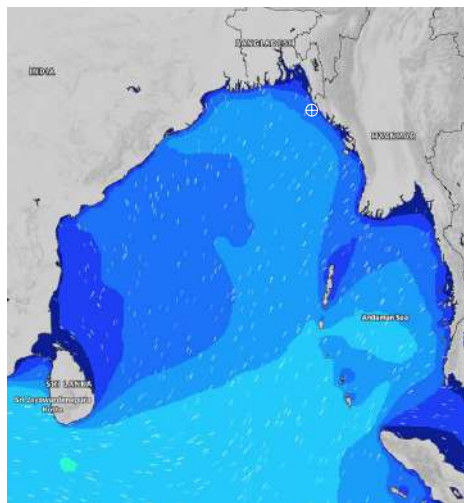
Date	Time	Max Wind Spd (kts)	Wind Direction	Wave Ht (m)	Sea State	Baro Pressure	Air Temp		Sea Surface Temp	Humidity (%)	Prob of Rain(%)	Sea State	Wave Ht (m)
							Max	Min					
31-05-24	0001	10	S	2.0	4	1006	32	27	30	91%	27% (0.1 mm)	0	0
	0600	11	S	1.8	4	1004			30	94%	23% (0.0 mm)	1	0 - 0.1
	1200	9	S	1.7	4	1006			31	85%	20% (0.0 mm)	2	0.1 - 0.5
	1800	10	S	1.6	4	1003			31	86%	36% (0.2 mm)	3	0.5 - 1.25
01-06-24	0001	12	SSW	1.6	4	1006	32	27	30	93%	24% (0.0 mm)	4	1.25 - 2.5
	0600	9	SSE	1.5	4	1004			30	95%	25% (0.0 mm)	5	2.5 - 4.0
	1200	9	SW	1.4	4	1006			30	84%	24% (0.0 mm)	6	4.0 - 6.0
	1800	13	SW	1.4	4	1004			31	87%	26% (0.0 mm)	7	6.0 - 9.0
02-06-24	0001	10	SSW	1.3	4	1006	32	27	30	91%	28% (0.0 mm)	8	9.0 - 14.0
	0600	7	S	1.2	3	1005			30	93%	10% (0.0 mm)	9	Over 14.0
	1200	7	SW	1.2	3	1006			30	85%	15% (0.0 mm)		
	1800	11	SW	1.2	3	1004			31	86%	14% (0.0 mm)		
03-06-24	0001	14	SSW	1.3	4	1006	32	27	30	90%	27% (0.1 mm)		
	0600	11	SW	1.4	4	1004			30	92%	18% (0.0 mm)		
	1200	10	SSW	1.4	4	1006			30	83%	16% (0.0 mm)		
	1800	12	SW	1.4	4	1003			31	87%	18% (0.0 mm)		

31 May 24 Fri (Probability 98%)

01 June 24 Sat (Probability 95%)

02 June 24 Sun (Probability 90%)

03 June 24 Mon (Probability 80%)



Significant wave height (m)

MARINE WEATHER FORECAST- 15 NM WEST OF ST. MARTIN'S LIGHT HOUSE (Lat 20° 37'N, Long 092° 03' E)

DATE : 31 May to 07 June 2024

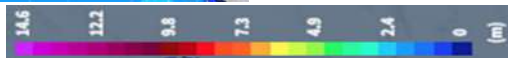
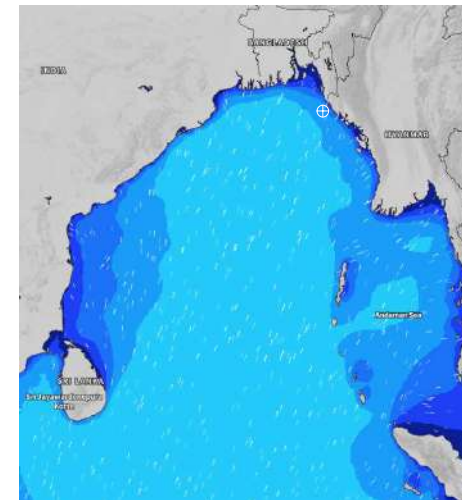
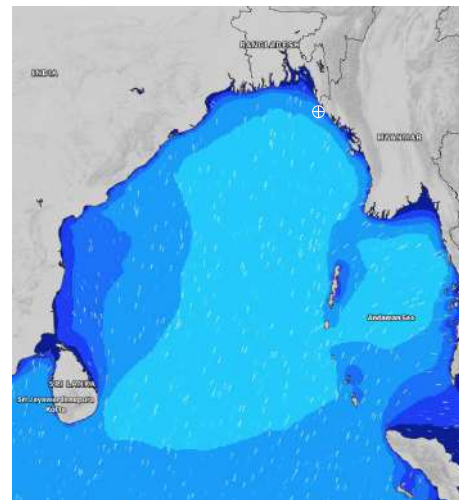
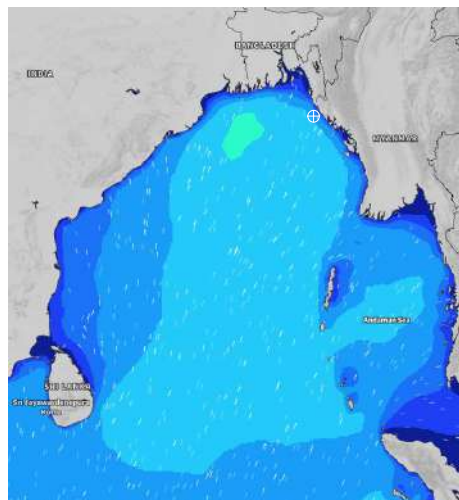
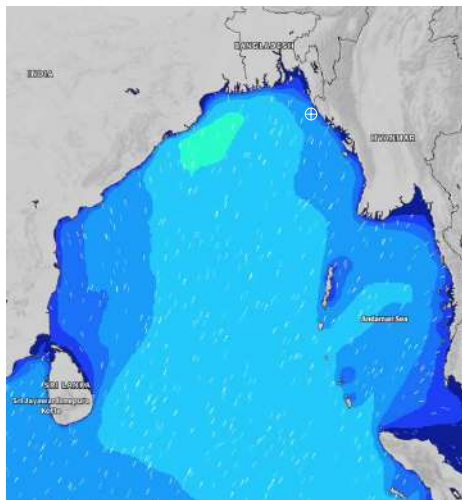
Date	Time	Max Wind Spd (kts)	Wind Direction	Wave Ht (m)	Sea State	Baro Pressure	Air Temp		Sea Surface Temp	Humidity (%)	Prob of Rain (%)	Sea State	Wave Ht (m)
							Max	Min					
04-06-24	0001	12	S	2.0	4	1005	32	27	30	90%	24% (0.0 mm)	0	0
	0600	16	SSW	2.0	4	1004			29	92%	25% (0.0 mm)	1	0 - 0.1
	1200	10	S	2.1	4	1006			29	84%	36% (0.2 mm)	2	0.1 - 0.5
	1800	12	SSE	2.2	4	1003			29	88%	32% (0.2 mm)	3	0.5 - 1.25
05-06-24	0001	14	SSE	2.2	4	1004	32	28	30	91%	13% (0.0 mm)	4	1.25 - 2.5
	0600	16	S	2.3	4	1003			29	96%	25% (0.0 mm)	5	2.5 - 4.0
	1200	15	S	2.4	4	1005			29	83%	24% (0.0 mm)	6	4.0 - 6.0
	1800	15	SW	2.4	4	1002			29	88%	26% (0.0 mm)	7	6.0 - 9.0
06-06-24	0001	16	S	2.4	4	1004	32	28	30	92%	35% (0.2 mm)	8	9.0 - 14.0
	0600	13	WSW	2.4	4	1003			29	94%	24% (0.0 mm)	9	Over 14.0
	1200	9	SSW	2.4	4	1005			29	83%	32% (0.2 mm)		
	1800	16	SW	2.3	4	1003			29	86%	35% (0.2 mm)		
07-06-24	0001	12	SSW	2.3	4	1005	32	28	30	90%	34% (0.2 mm)		
	0600	13	SW	2.2	4	1003			29	91%	26% (0.0 mm)		
	1200	15	SSW	2.2	4	1004			29	83%	38% (0.3 mm)		
	1800	14	SW	2.3	4	1003			29	88%	37% (0.3 mm)		

04 June 24 Tue (Probability 70%)

05 June 24 Wed (Probability 60%)

06 June 24 Thu (Probability 50%)

07 June 24 Fri (Probability 50%)



Significant wave height (m)

MARINE WEATHER FORECAST- 40 NM ESE OF PAYRA FAIRWAY (Lat 21° 07'N, Long 090° 45'E)

DATE : 31 May to 07 June 2024

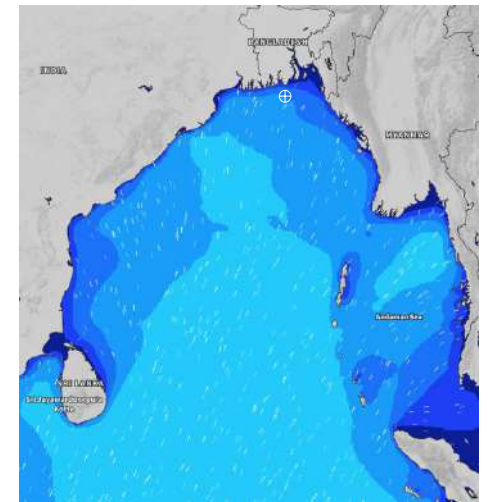
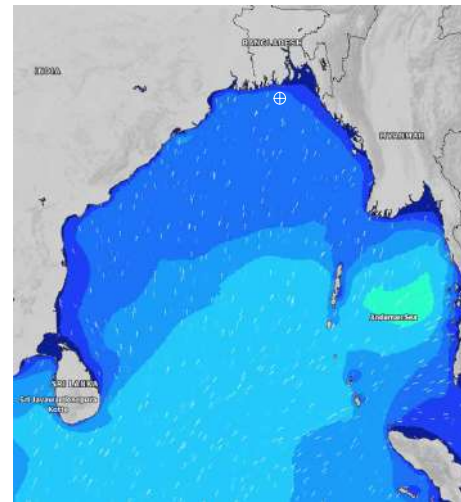
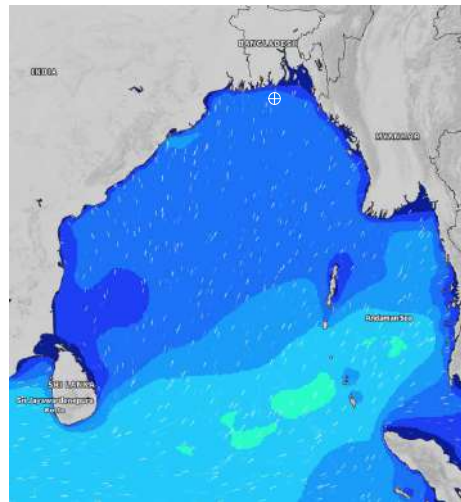
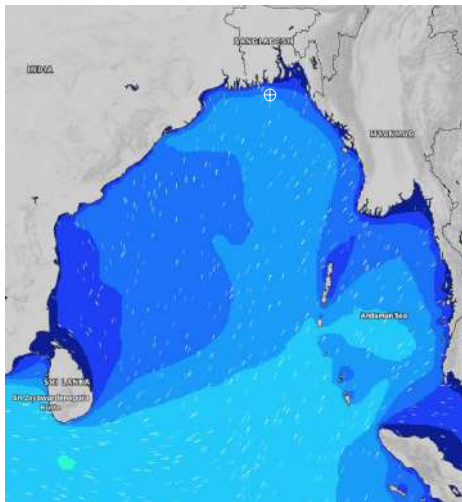
Date	Time	Max Wind Spd (kts)	Wind Direction	Wave Ht (m)	Sea State	Baro Pressure	Air Temp		Sea Surface Temp	Humidity (%)	Prob of Rain (%)	Sea State	Wave Ht (m)
							Max	Min					
31-05-24	0001	17	SSW	2.1	4	1004	32	28	31	88%	22% (0.0 mm)	0	0
	0600	19	S	2.0	4	1004			31	92%	32% (0.2 mm)	1	0 - 0.1
	1200	15	SSW	1.9	4	1005			31	83%	22% (0.0 mm)	2	0.1 - 0.5
	1800	15	SSW	1.8	4	1003			30	88%	23% (0.0 mm)	3	0.5 - 1.25
01-06-24	0001	15	SW	1.7	4	1005	32	28	30	90%	22% (0.0 mm)	4	1.25 - 2.5
	0600	14	S	1.6	4	1004			30	92%	18% (0.0 mm)	5	2.5 - 4.0
	1200	13	SSW	1.5	4	1005			31	83%	24% (0.0 mm)	6	4.0 - 6.0
	1800	15	SSW	1.6	4	1003			31	87%	19% (0.0 mm)	7	6.0 - 9.0
02-06-24	0001	14	SW	1.4	4	1006	32	28	30	89%	21% (0.0 mm)	8	9.0 - 14.0
	0600	13	SSW	1.4	4	1005			30	92%	23% (0.0 mm)	9	Over 14.0
	1200	13	SSW	1.4	4	1006			31	84%	25% (0.0 mm)		
	1800	14	SSW	1.5	4	1003			30	88%	14% (0.0 mm)		
03-06-24	0001	18	SSW	1.7	4	1005	32	28	30	89%	23% (0.0 mm)		
	0600	17	SSW	1.7	4	1004			30	92%	15% (0.0 mm)		
	1200	15	SSW	1.6	4	1005			31	83%	29% (0.0 mm)		
	1800	16	SSW	1.7	4	1003			30	87%	16% (0.0 mm)		

31 May 24 Fri (Probability 98%)

01 June 24 Sat (Probability 95%)

02 June 24 Sun (Probability 90%)

03 June 24 Mon (Probability 80%)



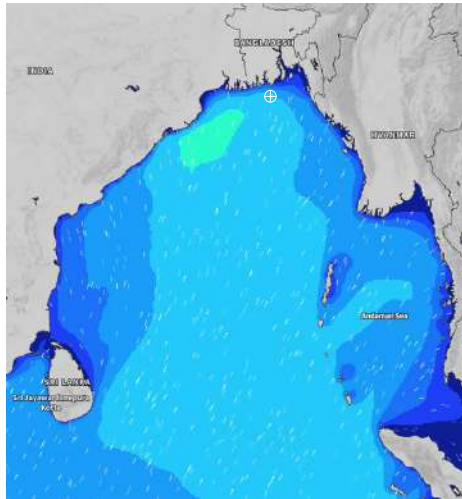
Significant wave height (m)

MARINE WEATHER FORECAST- 40 NM ESE OF PAYRA FAIRWAY (Lat 21° 07' N, Long 090° 45' E)

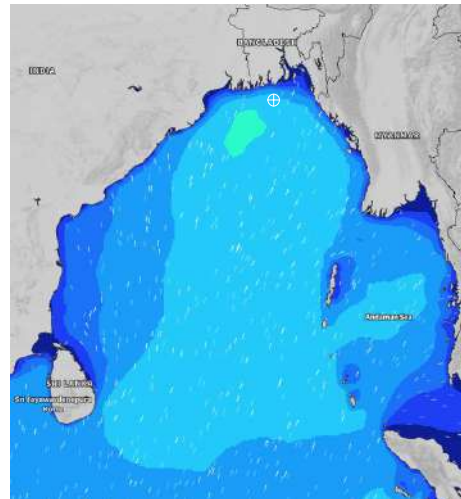
DATE : 31 May to 07 June 2024

Date	Time	Max Wind Spd (kts)	Wind Direction	Wave Ht (m)	Sea Stae	Baro Pressure	Air Temp		Sea Surface Temp	Humidity (%)	Prob of Rain (%)	Sea State	Wave Ht (m)
							Max	Min					
04-06-24	0001	21	S	2.2	4	1003	32	28	30	89%	24% (0.0 mm)	0	0
	0600	22	SSW	2.3	4	1003			29	91%	25% (0.0 mm)	1	0 - 0.1
	1200	23	S	2.5	4	1004			30	82%	26% (0.0 mm)	2	0.1 - 0.5
	1800	21	SSW	2.6	5	1001			30	87%	22% (0.0 mm)	3	0.5 - 1.25
05-06-24	0001	21	SSW	2.6	5	1003	32	28	30	88%	23% (0.0 mm)	4	1.25 - 2.5
	0600	18	SSW	2.7	5	1003			29	92%	25% (0.0 mm)	5	2.5 - 4.0
	1200	21	SSW	2.6	5	1004			30	83%	34% (0.2 mm)	6	4.0 - 6.0
	1800	14	SSW	2.6	5	1001			30	86%	26% (0.0 mm)	7	6.0 - 9.0
06-06-24	0001	17	SW	2.6	5	1004	32	28	30	89%	25% (0.0 mm)	8	9.0 - 14.0
	0600	15	SSW	2.4	4	1002			29	90%	18% (0.0 mm)	9	Over 14.0
	1200	15	SSW	2.3	4	1003			30	82%	19% (0.0 mm)		
	1800	18	SSW	2.4	4	1002			30	87%	17% (0.0 mm)		
07-06-24	0001	19	SSW	2.4	4	1003	32	28	30	89%	15% (0.0 mm)		
	0600	15	SSW	2.5	4	1002			29	92%	22% (0.0 mm)		
	1200	20	S	2.5	4	1004			30	84%	21% (0.0 mm)		
	1800	17	SSW	2.4	4	1002			30	88%	23% (0.0 mm)		

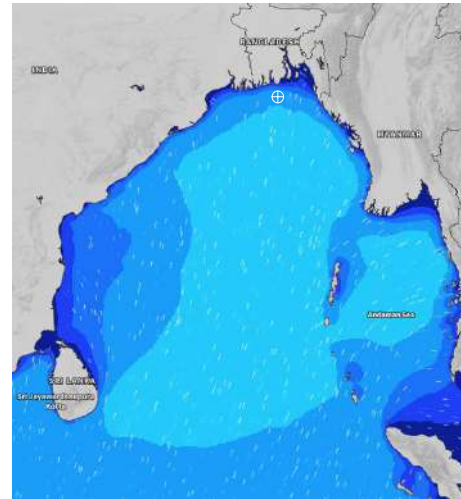
04 June 24 Tue (Probability 70%)



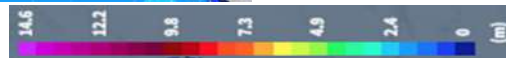
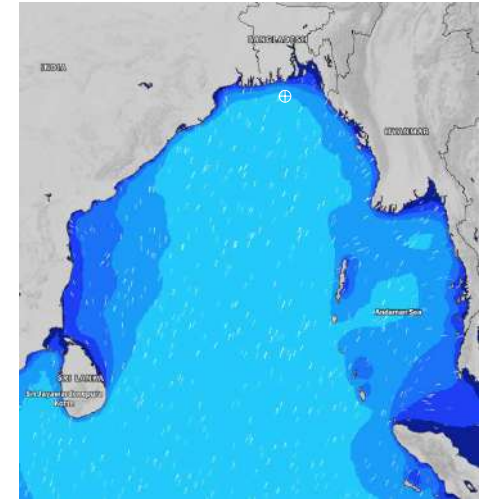
05 June 24 Wed (Probability 60%)



06 June 24 Thu (Probability 50%)



07 June 24 Fri (Probability 50%)



Significant wave height (m)

MARINE WEATHER FORECAST- 10 NM SOUTH OF MONGLA FAIRWAY (Lat 21° 16'N, Long 089° 34'E)

DATE : 31 May to 07 June 2024

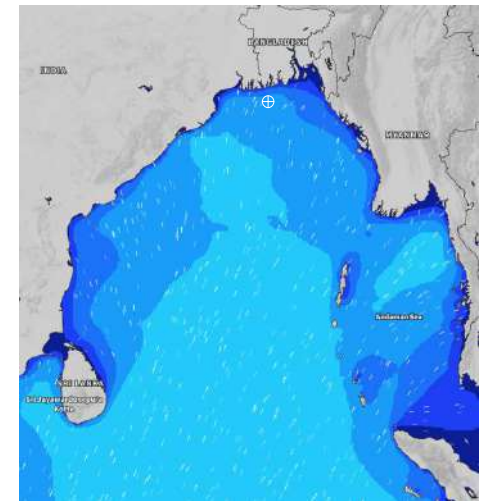
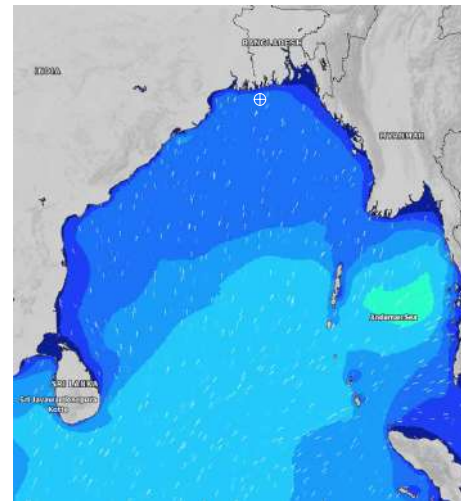
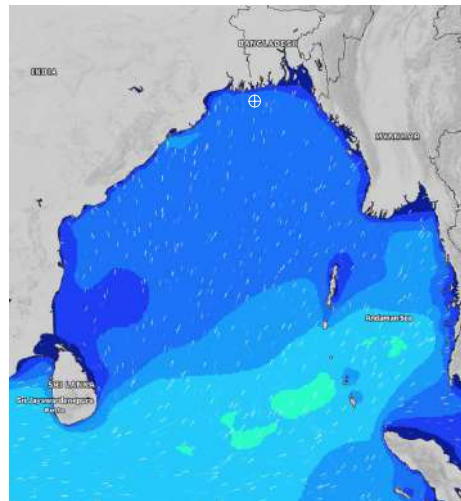
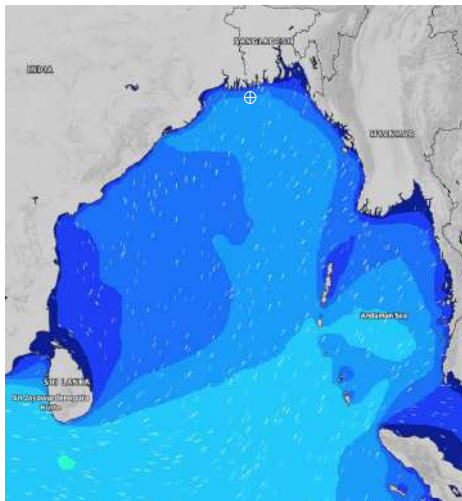
Date	Time	Max Wind Spd (kts)	Wind Direction	Wave Ht (m)	Sea State	Baro Pressure	Air Temp		Sea Surface Temp	Humidity (%)	Prob of Rain (%)	Sea State	Wave Ht (m)
							Max	Min					
31-05-24	0001	19	SSW	2.1	4	1004	33	28	30	88%	22% (0.0 mm)	0	0
	0600	21	SSW	2.0	4	1003			30	92%	23% (0.0 mm)	1	0 - 0.1
	1200	19	SSW	1.9	4	1005			31	84%	21% (0.0 mm)	2	0.1 - 0.5
	1800	18	SSW	1.8	4	1002			30	83%	19% (0.0 mm)	3	0.5 - 1.25
01-06-24	0001	19	SSW	1.7	4	1005	33	28	30	91%	20% (0.0 mm)	4	1.25 - 2.5
	0600	20	SSW	1.7	4	1004			30	95%	17% (0.0 mm)	5	2.5 - 4.0
	1200	18	SSW	1.6	4	1005			31	77%	15% (0.0 mm)	6	4.0 - 6.0
	1800	18	S	1.6	4	1002			30	82%	16% (0.0 mm)	7	6.0 - 9.0
02-06-24	0001	18	SSW	2.6	4	1004	33	28	30	86%	19% (0.0 mm)	8	9.0 - 14.0
	0600	18	SSW	1.6	4	1005			30	93%	15% (0.0 mm)	9	Over 14.0
	1200	17	SSW	1.6	4	1004			31	75%	13% (0.0 mm)		
	1800	18	SSW	1.7	4	1002			30	84%	15% (0.0 mm)		
03-06-24	0001	21	SW	2.0	4	1005	33	28	30	88%	12% (0.0 mm)		
	0600	22	SW	2.0	4	1004			30	92%	17% (0.0 mm)		
	1200	21	SW	2.1	4	1005			31	75%	15% (0.0 mm)		
	1800	23	SSW	2.1	4	1003			30	84%	19% (0.0 mm)		

31 May 24 Fri (Probability 98%)

01 June 24 Sat (Probability 95%)

02 June 24 Sun (Probability 90%)

03 June 24 Mon (Probability 80%)



Significant wave height (m)

MARINE WEATHER FORECAST- 10 NM SOUTH OF MONGLA FAIRWAY (Lat 21° 16'N, Long 089° 34'E)

DATE : 31 May to 07 June 2024

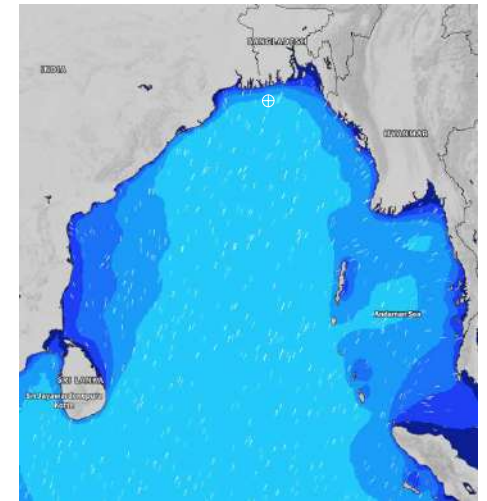
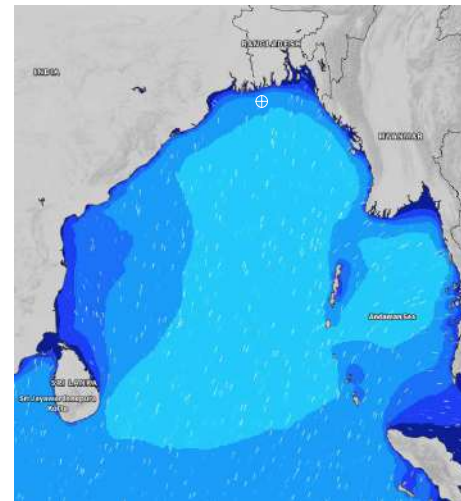
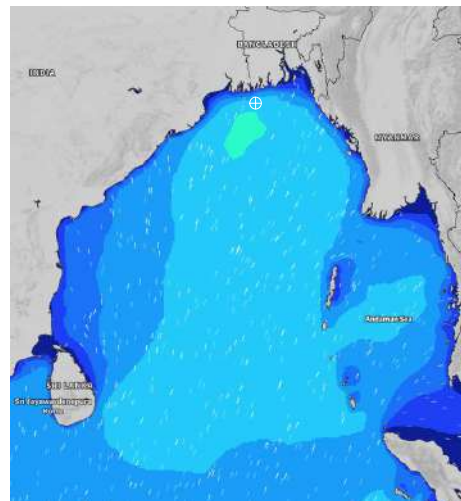
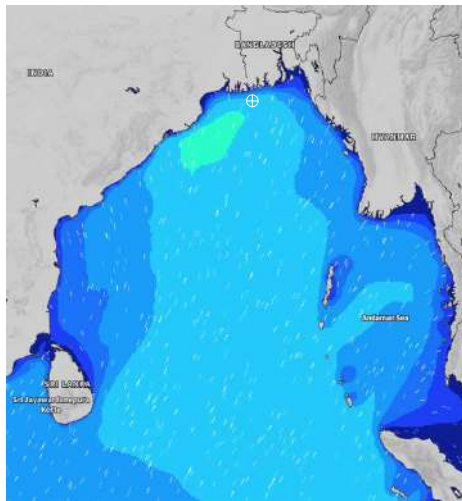
Date	Time	Max Wind Spd (kts)	Wind Direction	Wave Ht (m)	Sea State	Baro Pressure	Air Temp		Sea Surface Temp	Humidity (%)	Prob of Rain (%)	Sea State	Wave Ht (m)
							Max	Min					
04-06-24	0001	25	SSW	2.5	4	1003	33	28	30	88%	20% (0.0 mm)	0	0
	0600	25	SSW	2.6	5	1003			30	92%	22% (0.0 mm)	1	0 - 0.1
	1200	26	SSW	2.7	5	1004			31	79%	19% (0.0 mm)	2	0.1 - 0.5
	1800	20	SSW	2.7	5	1001			30	85%	20% (0.0 mm)	3	0.5 - 1.25
05-06-24	0001	20	SSW	2.6	5	1003	34	29	30	89%	27% (0.0 mm)	4	1.25 - 2.5
	0600	20	S	2.6	5	1002			30	91%	28% (0.0 mm)	5	2.5 - 4.0
	1200	19	SSW	2.7	5	1002			31	85%	19% (0.0 mm)	6	4.0 - 6.0
	1800	11	SSW	2.6	5	1000			31	87%	22% (0.0 mm)	7	6.0 - 9.0
06-06-24	0001	13	SSW	2.3	4	1002	34	29	30	87%	30% (0.0 mm)	8	9.0 - 14.0
	0600	18	SW	2.3	4	1001			30	92%	23% (0.0 mm)	9	Over 14.0
	1200	15	SSW	2.2	4	1002			31	83%	24% (0.0 mm)		
	1800	19	S	2.2	4	1000			31	88%	21% (0.0 mm)		
07-06-24	0001	22	SSW	2.5	4	1002	34	29	30	86%	23% (0.0 mm)		
	0600	19	SSW	2.4	4	1001			30	90%	20% (0.0 mm)		
	1200	18	SW	2.5	4	1002			31	82%	19% (0.0 mm)		
	1800	16	SW	2.5	4	1000			31	86%	17% (0.0 mm)		

04 June 24 Tue (Probability 70%)

05 June 24 Wed (Probability 60%)

06 June 24 Thu (Probability 50%)

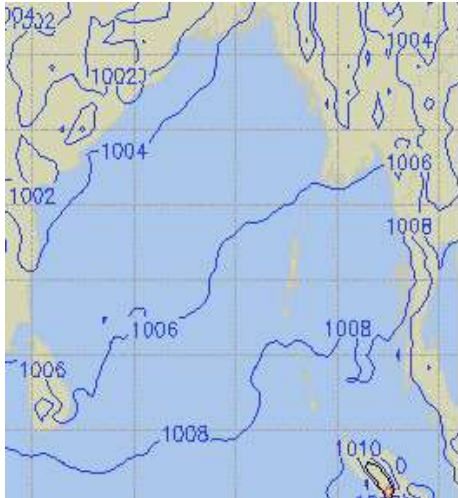
07 June 24 Fri (Probability 50%)



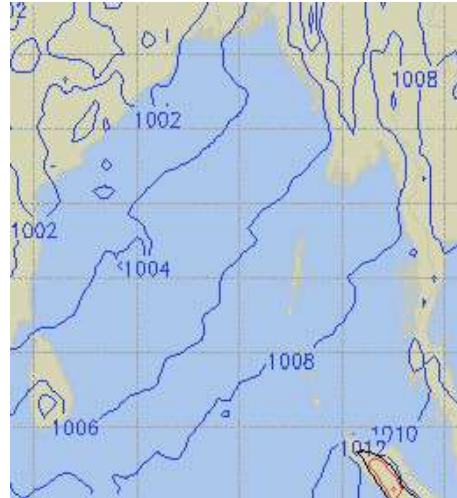
Significant wave height (m)

PREDICTED SURFACE PRESSURE FORECAST (31 May to 06 June 2024)

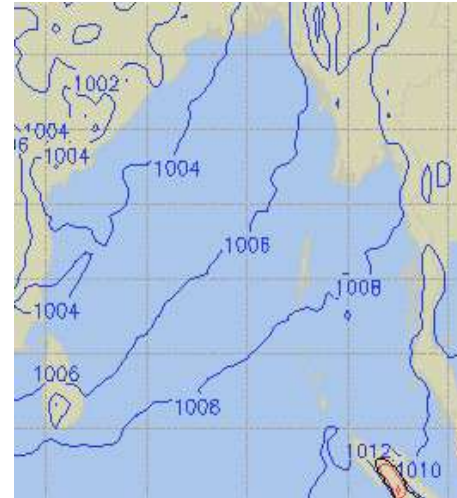
31 May 24 Fri (Probability 98%)



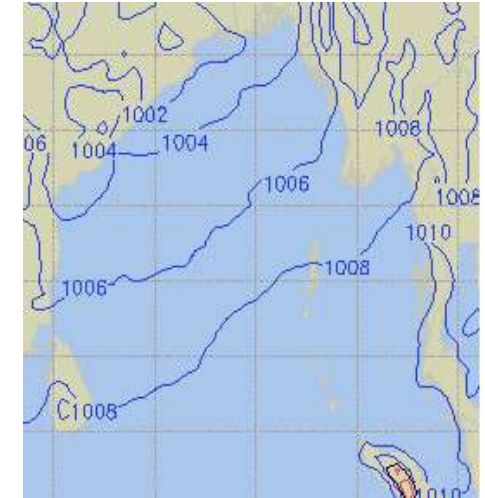
01 June 24 Sat (Probability 95%)



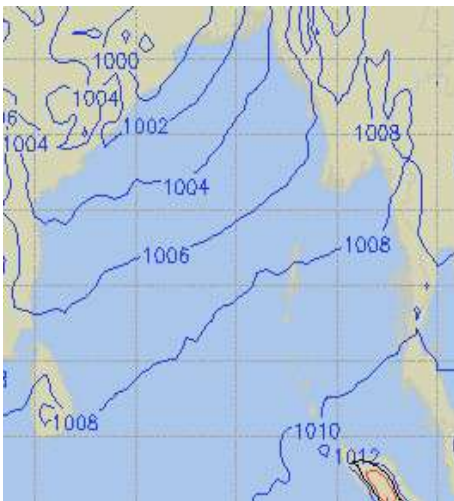
02 June 24 Sun (Probability 90%)



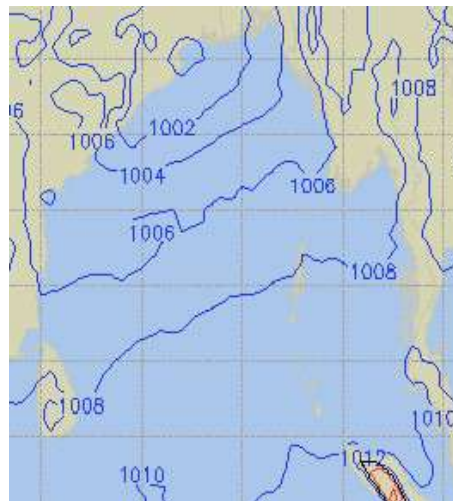
03 June 24 Mon (Probability 80%)



04 June 24 Tue (Probability 70%)



05 June 24 Wed (Probability 60%)



06 June 24 Thu (Probability 50%)

