



SUMMARY OF MARINE WEATHER FORECAST
COASTAL AREA OF BANGLADESH
DATE: 31 March to 07 April 2026



Fleet Forecast	Trough of low lies over West Bengal and adjoining area. Seasonal low lies over South Bay
Wind Direction, Speed	South-west/ westerly 10-15 kts
Wave Height & Sea State	Ctg Outer Anchorage: 0.2 to 0.5 m (Sea state: 2) Abeam to Cox's Bazar: 0.6 to 0.9 m (Sea state: 3) St. Martin's Island: 0.6 to 0.9 m (Sea state 3) Payra Fairway Buoy: 0.7 to 1.2 m (Sea state: 3) Mongla Fairway Buoy: 0.7 to 1.2 m (Sea state: 3) Outer EEZ: 0.7 to 1.3 m (Sea state: 3 to 4)
Sea Surface Temperature	23° C - 28° C
Baro Pressure	1007-1012 mb
Rainfall	Partly cloudy to cloudy sky & light rain/ thunder shower with gusty wind is likely to occur over Bay of Bengal and adjoining area
Fog & Visibility	Light fog may occur over coastal area during mid night to morning & Visibility 0.5– 4.5 km

Marine Weather Outlook (31 March to 07 April 2026):

- Partly cloudy to cloudy sky & light rain/ thunder shower with gusty wind is likely to occur over Bay of Bengal and adjoining area.
- Light fog may occur over coastal area during mid night to morning.
- Day and Night temperature may remain nearly unchanged.



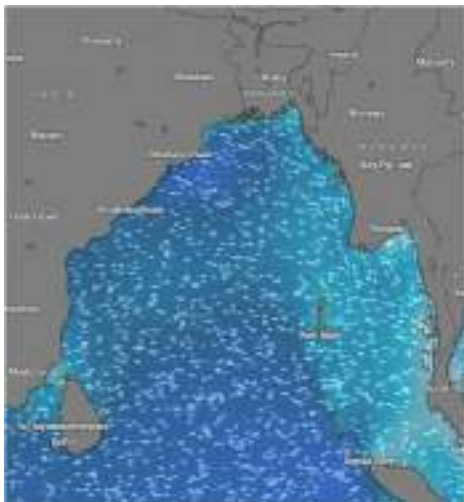
MARINE WEATHER FORECAST (31 March to 07 April 2026)

PATENGA POINT (22° 12' N, 091° 38' E)

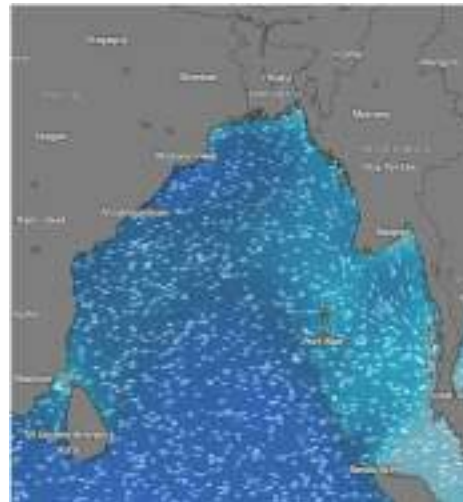


Date	Time	Air Temp (°C)		Sea Surface Temp (°C)	Baro Pressure (mbar)	Wind Direction	Wind Spd (kts)		Wave Ht (m)	Sea State	Humidity (%)	Prob of Rain (%)	Amount of Rain (mm)
		Max	Min				Gusting	Avg					
31-03-26 (Tuesday)	0001	31	22	23	1011	SSW	09	05	0.3	2	89	09	0.0
	0600			22	1012	SSE	07	04	0.3	2	90	15	0.0
	1200			28	1010	SSW	12	08	0.3	2	72	08	0.0
	1800			26	1009	SW	13	09	0.3	2	86	12	0.0
01-04-26 (Wednesday)	0001	31	22	23	1011	SSW	10	06	0.3	2	88	13	0.0
	0600			22	1012	SSE	10	06	0.2	2	90	17	0.0
	1200			28	1010	SSW	12	08	0.2	2	75	10	0.0
	1800			26	1009	SSW	14	10	0.3	2	86	14	0.0
02-04-26 (Thursday)	0001	31	22	23	1010	S	10	06	0.3	2	88	12	0.0
	0600			22	1011	SSE	12	08	0.3	2	90	15	0.0
	1200			28	1010	SSW	11	07	0.2	2	66	08	0.0
	1800			26	1009	SSW	13	09	0.2	2	75	17	0.0
03-04-26 (Friday)	0001	31	22	23	1010	S	07	04	0.3	2	88	11	0.0
	0600			22	1011	SSW	11	07	0.3	2	90	14	0.0
	1200			28	1010	SW	13	09	0.4	2	65	08	0.0
	1800			26	1009	SSW	13	09	0.3	2	76	15	0.0

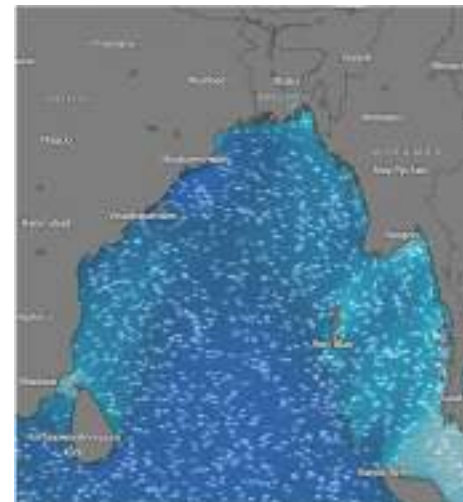
31 Mar 2026



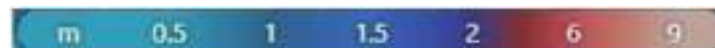
01 Apr 2026



02 Apr 2026



03 Apr 2026



Significant wave height (m)



MARINE WEATHER FORECAST (31 March to 07 April 2026)

PATENGA POINT (22° 12' N, 091° 38' E)



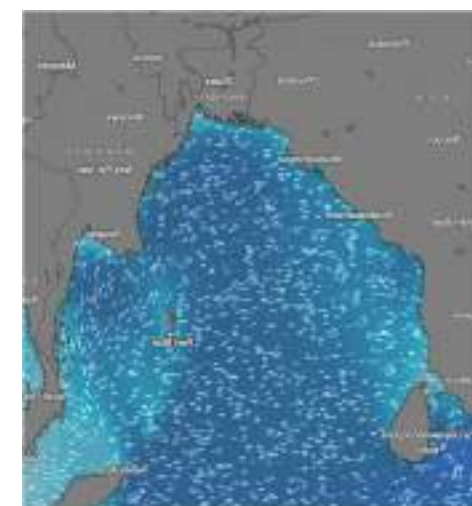
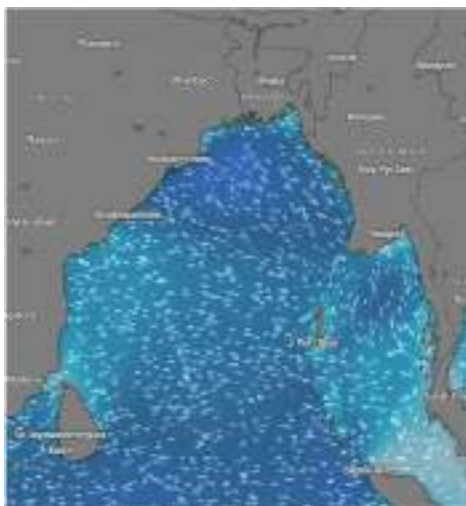
Date	Time	Air Temp (°C)		Sea Surface Temp (°C)	Baro Pressure (mbar)	Wind Direction	Wind Spd (kts)		Wave Ht (m)	Sea State	Humidity (%)	Prob of Rain (%)	Amount of Rain (mm)
		Max	Min				Gusting	Avg					
04-04-26 (Saturday)	0001	31	22	23	1010	S	11	07	0.4	2	88	10	0.0
	0600			22	1011	SSE	12	08	0.4	2	90	15	0.0
	1200			28	1010	SSW	15	11	0.4	2	72	09	0.0
	1800			26	1009	S	14	10	0.5	2	84	14	0.0
05-04-26 (Sunday)	0001	31	22	25	1010	S	11	07	0.4	2	89	12	0.0
	0600			22	1011	S	12	08	0.3	2	91	16	0.0
	1200			28	1010	SSW	14	10	0.3	2	75	08	0.0
	1800			26	1009	SSW	11	07	0.3	2	87	15	0.0
06-04-26 (Monday)	0001	31	22	23	1010	S	12	08	0.4	2	88	12	0.0
	0600			22	1011	S	13	09	0.3	2	92	16	0.0
	1200			28	1010	SSW	12	08	0.3	2	78	08	0.0
	1800			26	1009	SSW	12	09	0.2	2	85	10	0.0
07-04-26 (Tuesday)	0001	31	22	23	1010	S	10	06	0.4	2	86	11	0.0
	0600			22	1011	SW	09	05	0.3	2	91	15	0.0
	1200			29	1010	SSW	12	09	0.3	2	75	09	0.0
	1800			26	1009	SW	10	06	0.2	2	87	11	0.0

04 Apr 2026

05 Apr 2026

06 Apr 2026

07 Apr 2026



Significant wave height (m)



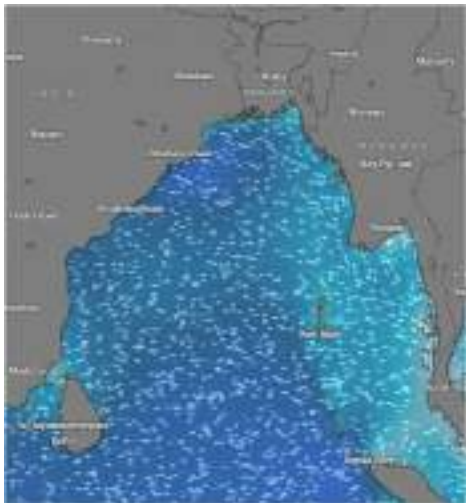
MARINE WEATHER FORECAST (31 March to 07 April 2026)

ABEAM TO KUTUBDIA (21° 51' N, 091° 40' E)



Date	Time	Air Temp (°C)		Sea Surface Temp (°C)	Baro Pressure (mbar)	Wind Direction	Wind Spd (kts)		Wave Ht (m)	Sea State	Humidity (%)	Prob of Rain (%)	Amount of Rain (mm)
		Max	Min				Gusting	Avg					
31-03-26 (Tuesday)	0001	31	22	23	1011	SW	13	09	0.4	2	88	10	0.0
	0600			22	1012	SSW	12	08	0.4	2	90	14	0.0
	1200			28	1010	SSW	12	08	0.4	2	74	09	0.0
	1800			26	1009	SSW	13	09	0.4	2	85	13	0.0
01-04-26 (Wednesday)	0001	31	22	23	1011	SSW	11	07	0.4	2	90	10	0.0
	0600			22	1012	SSW	10	07	0.4	2	92	13	0.0
	1200			28	1010	SSW	12	07	0.4	2	76	07	0.0
	1800			26	1009	SSW	12	08	0.4	2	87	11	0.0
02-04-26 (Thursday)	0001	31	22	23	1010	SSW	11	07	0.4	2	88	12	0.0
	0600			22	1011	SSW	12	08	0.3	2	90	15	0.0
	1200			28	1010	SSW	10	06	0.3	2	72	08	0.0
	1800			26	1009	SW	11	07	0.3	2	85	13	0.0
03-04-26 (Friday)	0001	31	22	23	1010	SSW	10	06	0.4	2	88	10	0.0
	0600			22	1011	SSE	12	08	0.4	2	90	13	0.0
	1200			28	1010	SSW	13	09	0.4	3	73	07	0.0
	1800			26	1009	SSW	13	09	0.4	3	86	11	0.0

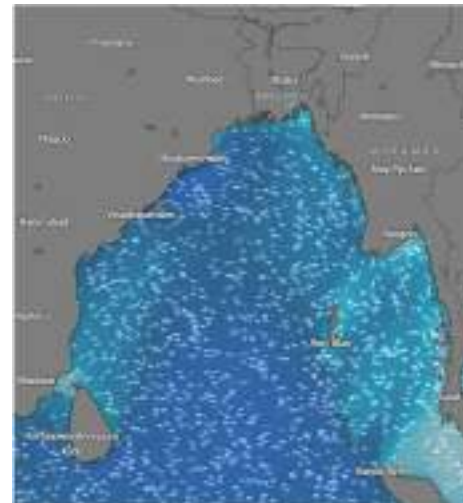
31 Mar 2026



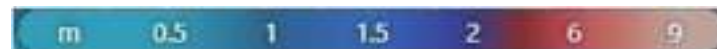
01 Apr 2026



02 Apr 2026



03 Apr 2026



Significant wave height (m)



MARINE WEATHER FORECAST (31 March to 07 April 2026) ABEAM TO KUTUBDIA (21° 51'N, 091° 40'E)



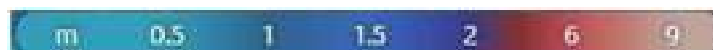
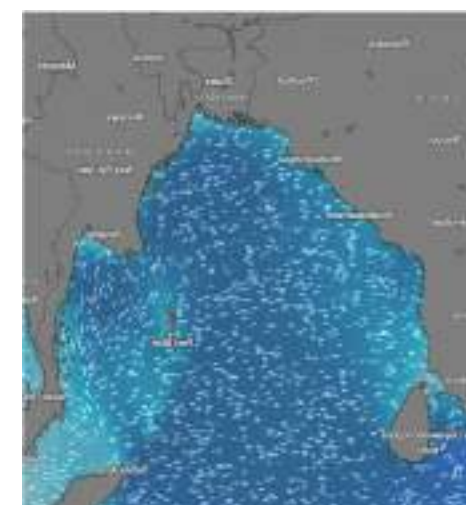
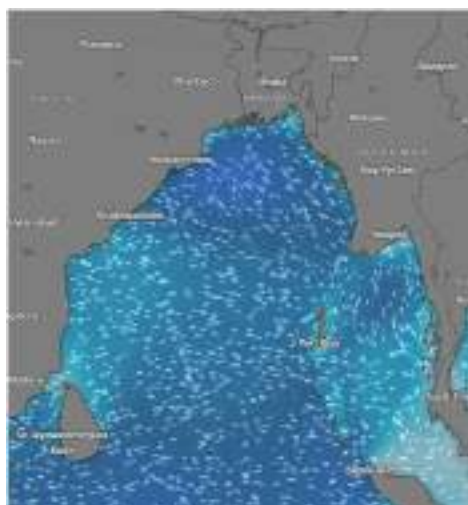
Date	Time	Air Temp (°C)		Sea Surface Temp (°C)	Baro Pressure (mbar)	Wind Direction	Wind Spd (kts)		Wave Ht (m)	Sea State	Humidity (%)	Prob of Rain (%)	Amount of Rain (mm)
		Max	Min				Gusting	Avg					
04-04-26 (Saturday)	0001	31	22	23	1010	S	12	08	0.4	2	90	10	0.0
	0600			22	1011	S	14	10	0.5	3	92	16	0.0
	1200			28	1010	SSW	15	11	0.5	3	75	09	0.0
	1800			26	1009	SSW	16	12	0.5	3	86	14	0.0
05-04-26 (Sunday)	0001	31	22	23	1010	SSW	12	08	0.5	3	91	12	0.0
	0600			22	1011	S	14	10	0.4	2	92	16	0.0
	1200			28	1010	SSW	13	09	0.4	2	76	08	0.0
	1800			26	1009	SSE	12	08	0.5	3	87	12	0.0
06-04-26 (Monday)	0001	31	22	23	1010	SSW	14	11	0.5	3	91	12	0.0
	0600			22	1011	S	13	09	0.4	2	90	14	0.0
	1200			28	1010	SSW	10	07	0.4	2	77	09	0.0
	1800			26	1009	SSW	09	06	0.5	3	88	13	0.0
07-04-26 (Tuesday)	0001	31	22	23	1010	SSW	08	04	0.3	2	91	12	0.0
	0600			24	1011	S	07	04	0.4	2	91	16	0.0
	1200			28	1010	SSW	10	07	0.3	2	79	10	0.0
	1800			26	1009	SW	12	08	0.3	2	90	16	0.0

04 Apr 2026

05 Apr 2026

06 Apr 2026

07 Apr 2026



Significant wave height (m)



MARINE WEATHER FORECAST (31 March to 07 April 2026)

ABEAM TO ELEPHANT POINT (21° 11' N, 091° 52' E)



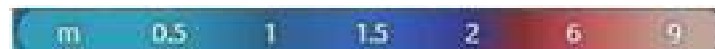
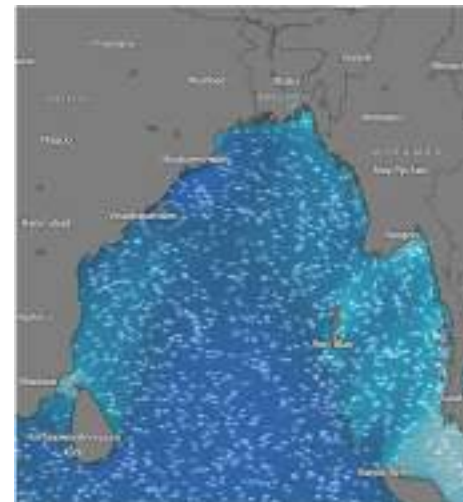
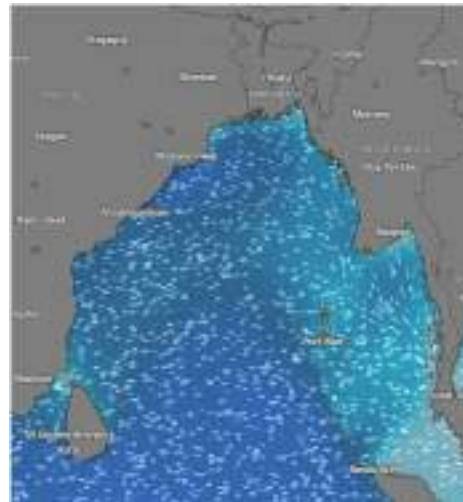
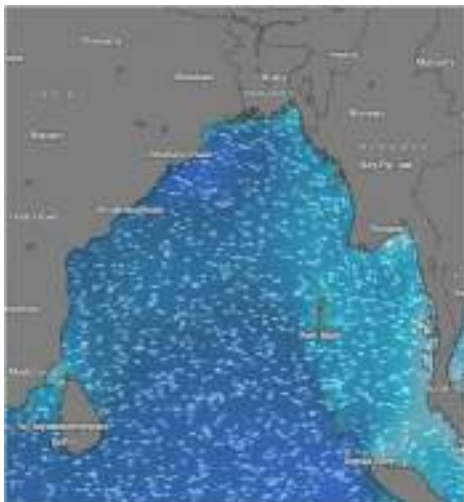
Date	Time	Air Temp (°C)		Sea Surface Temp (°C)	Baro Pressure (mbar)	Wind Direction	Wind Spd (kts)		Wave Ht (m)	Sea State	Humidity (%)	Prob of Rain (%)	Amount of Rain (mm)
		Max	Min				Gusting	Avg					
31-03-26 (Tuesday)	0001	31	22	23	1011	W	11	07	0.8	3	88	10	0.0
	0600			22	1012	SSW	09	05	0.8	3	91	12	0.0
	1200			28	1010	SSW	10	06	0.7	3	74	07	0.0
	1800			26	1009	SW	13	09	0.8	3	83	13	0.0
01-04-26 (Wednesday)	0001	31	22	23	1011	W	09	05	0.8	3	89	09	0.0
	0600			22	1012	SW	07	04	0.7	3	90	12	0.0
	1200			28	1010	NW	09	05	0.7	3	75	06	0.0
	1800			26	1009	W	13	09	0.7	3	86	12	0.0
02-04-26 (Thursday)	0001	31	22	23	1010	SW	09	05	0.7	3	88	08	0.0
	0600			22	1011	SSW	10	06	0.6	3	90	12	0.0
	1200			28	1010	SW	11	07	0.6	3	74	05	0.0
	1800			26	1009	W	10	06	0.7	3	83	10	0.0
03-04-26 (Friday)	0001	31	22	23	1010	SW	10	06	0.7	3	90	09	0.0
	0600			22	1011	SSW	07	04	0.7	3	91	12	0.0
	1200			28	1010	SSW	09	05	0.8	3	74	06	0.0
	1800			26	1009	SSW	12	08	0.8	3	86	12	0.0

31 Mar 2026

01 Apr 2026

02 Apr 2026

03 Apr 2026



Significant wave height (m)



MARINE WEATHER FORECAST (31 March to 07 April 2026)

ABEAM TO ELEPHANT POINT (21° 11' N, 091° 52' E)



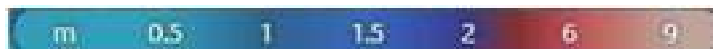
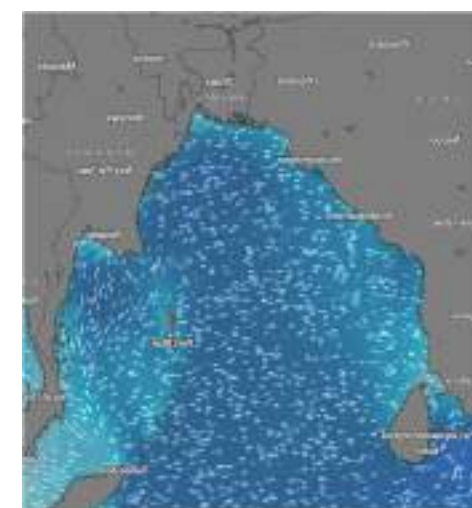
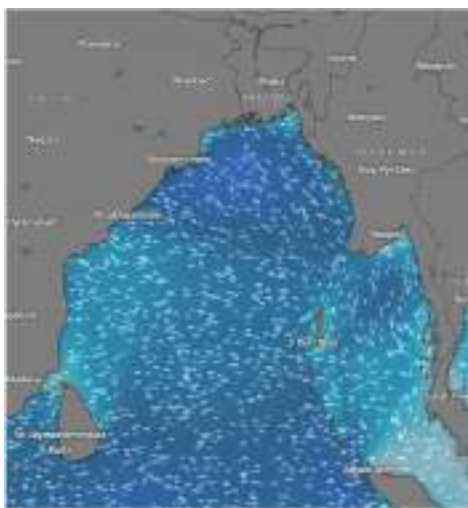
Date	Time	Air Temp (°C)		Sea Surface Temp (°C)	Baro Pressure (mbar)	Win Direction	Wind Spd (kts)		Wave Ht (m)	Sea State	Humidity (%)	Prob of Rain (%)	Amount of Rain (mm)
		Max	Min				Gusting	Avg					
04-04-26 (Saturday)	0001	31	22	23	1010	SSW	10	06	0.9	3	89	09	0.0
	0600			22	1011	S	10	06	0.9	3	92	14	0.0
	1200			28	1010	SSW	13	09	0.9	3	75	07	0.0
	1800			26	1009	SSW	15	11	1.0	3	86	12	0.0
05-04-26 (Sunday)	0001	31	22	23	1010	S	10	06	0.9	3	90	09	0.0
	0600			22	1011	SSW	13	09	0.9	3	91	15	0.0
	1200			28	1010	SSW	10	06	0.9	3	74	08	0.0
	1800			26	1009	SW	11	07	0.9	3	88	13	0.0
06-04-26 (Monday)	0001	31	22	23	1008	SSW	12	09	0.8	3	91	09	0.0
	0600			22	1011	SSW	12	09	0.9	3	92	15	0.0
	1200			28	1010	SE	09	06	0.9	3	76	08	0.0
	1800			26	1007	SW	12	08	0.8	3	90	13	0.0
07-04-26 (Tuesday)	0001	30	22	23	1010	SSW	11	08	0.8	3	92	15	0.0
	0600			22	1011	SW	12	09	0.9	3	90	14	0.0
	1200			28	1012	SSW	08	05	0.8	3	77	07	0.0
	1800			26	1009	SW	11	08	0.8	3	88	14	0.0

04 Apr 2026

05 Apr 2026

06 Apr 2026

07 Apr 2026



Significant wave height (m)



MARINE WEATHER FORECAST (31 March to 07 April 2026) ABEAM TO ST. MARTIN'S LIGHT HOUSE (20° 37'N, 092° 08' E)

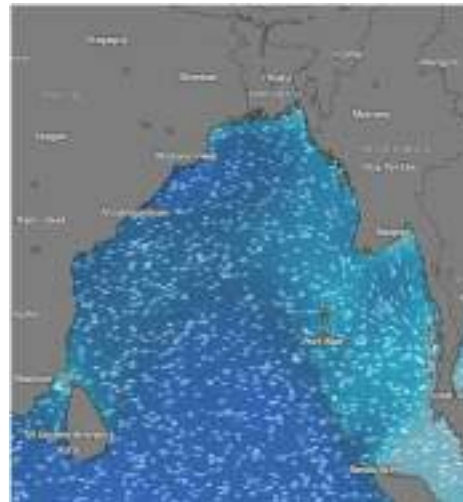


Date	Time	AirTemp (°C)		Sea Surface Temp (°C)	Baro Pressure (mbar)	Wind Direction	Wind Spd (kts)		Wave Ht (m)	Sea State	Humidity (%)	Prob of Rain (%)	Amount of Rain (mm)
		Max	Min				Gusting	Avg					
31-03-26 (Tuesday)	0001	31	22	23	1011	SW	10	06	0.8	3	87	10	0.0
	0600			22	1012	SSW	07	04	0.8	3	90	13	0.0
	1200			28	1010	SW	10	06	0.7	3	72	08	0.0
	1800			26	1009	W	14	10	0.8	3	84	16	0.0
01-04-26 (Wednesday)	0001	31	22	23	1011	NW	12	08	0.8	3	88	08	0.0
	0600			22	1012	SSW	09	05	0.8	3	90	12	0.0
	1200			28	1010	SW	10	06	0.8	3	74	05	0.0
	1800			26	1009	SW	13	09	0.8	3	85	10	0.0
02-04-26 (Thursday)	0001	31	22	23	1010	NW	11	07	0.7	3	89	08	0.0
	0600			22	1011	SW	05	04	0.7	3	90	15	0.0
	1200			28	1010	W	12	08	0.7	3	71	06	0.0
	1800			26	1009	NW	13	09	0.7	3	84	12	0.0
03-04-26 (Friday)	0001	31	22	23	1010	NW	12	08	0.7	3	90	09	0.0
	0600			22	1011	NW	07	04	0.7	3	91	15	0.0
	1200			28	1010	W	10	06	0.8	3	75	07	0.0
	1800			26	1009	W	13	09	0.8	3	86	12	0.0

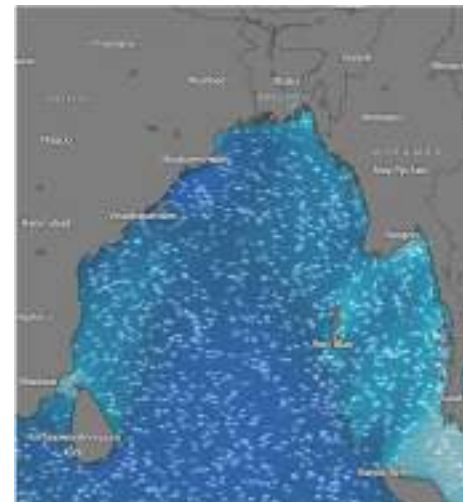
31 Mar 2026



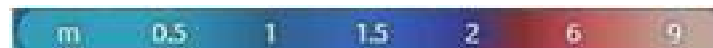
01 Apr 2026



02 Apr 2026



03 Apr 2026



Significant wave height (m)



MARINE WEATHER FORECAST (31 March to 07 April 2026)

ABEAM TO ST. MARTIN'S LIGHT HOUSE (20° 37' N, 092° 08' E)



Date	Time	Air Temp (°C)		Sea Surface Temp (°C)	Baro Pressure (mbar)	Wind Direction	Wind Spd (kts)		Wave Ht (m)	Sea State	Humidity (%)	Prob of Rain (%)	Amount of Rain (mm)
		Max	Min				Gusting	Avg					
04-04-26 (Saturday)	0001	31	22	23	1010	SW	11	07	0.8	3	89	07	0.0
	0600			22	1011	SW	07	04	0.8	3	92	12	0.0
	1200			28	1010	SSW	14	10	0.9	3	74	08	0.0
	1800			26	1009	SW	13	09	0.9	3	87	16	0.0
05-04-26 (Sunday)	0001	31	22	23	1010	W	10	06	0.9	3	89	07	0.0
	0600			22	1011	SSW	09	05	0.9	3	91	15	0.0
	1200			28	1010	SW	12	08	0.9	3	75	09	0.0
	1800			26	1009	W	14	10	0.9	3	86	17	0.0
06-04-26 (Monday)	0001	31	22	23	1010	W	14	10	0.9	3	88	09	0.0
	0600			22	1011	SSW	16	11	0.9	3	92	12	0.0
	1200			28	1010	SW	17	13	0.9	3	76	09	0.0
	1800			26	1009	W	15	10	0.9	3	87	14	0.0
07-04-26 (Tuesday)	0001	31	22	23	1010	W	12	09	0.9	3	88	10	0.0
	0600			22	1011	SSW	11	08	0.8	3	91	15	0.0
	1200			28	1010	SW	10	07	0.8	3	75	08	0.0
	1800			26	1009	SW	14	10	0.8	3	89	16	0.0

04 Apr 2026



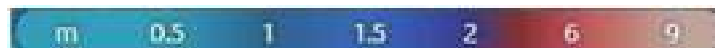
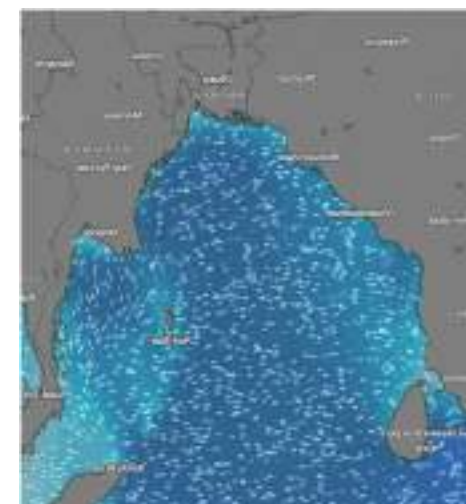
05 Apr 2026



06 Apr 2026



07 Apr 2026



Significant wave height (m)



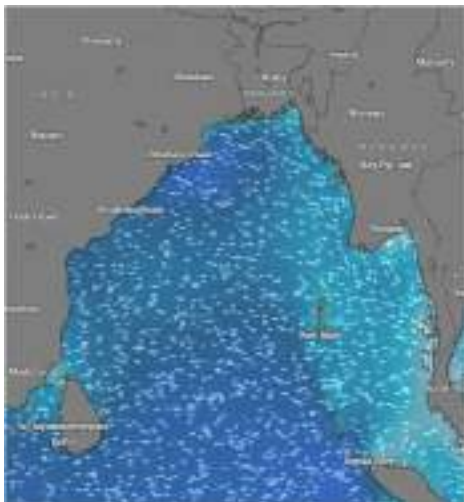
MARINE WEATHER FORECAST (31 March to 07 April 2026)

PAYRA FAIRWAY (21° 22' N, 090° 6' E)

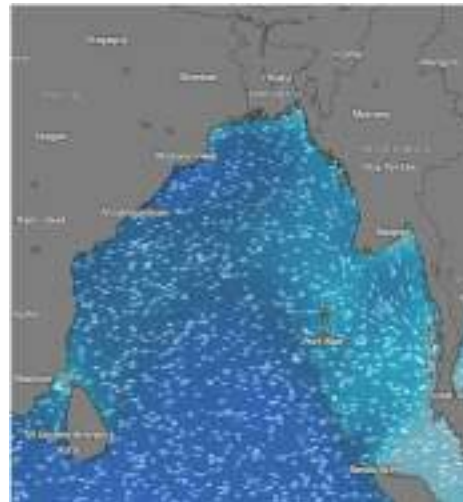


Date	Time	Air Temp (°C)		Sea Surface Temp (°C)	Baro Pressure (mbar)	Wind Direction	Wind Spd (kts)		Wave Ht (m)	Sea State	Humidity (%)	Prob of Rain (%)	Amount of Rain (mm)
		Max	Min				Gusting	Avg					
31-03-26 (Tuesday)	0001	31	22	23	1011	SW	17	14	1.1	3	89	10	0.0
	0600			22	1012	SSW	14	10	1.1	3	91	13	0.0
	1200			28	1010	SSW	13	09	1.0	3	75	08	0.0
	1800			26	1009	SSW	15	11	1.1	3	85	15	0.0
01-04-26 (Wednesday)	0001	31	22	23	1011	SW	12	08	1.0	3	87	10	0.0
	0600			22	1012	SW	12	08	1.0	3	90	15	0.0
	1200			28	1010	SW	11	07	0.9	3	74	08	0.0
	1800			26	1009	SW	14	10	0.9	3	85	14	0.0
02-04-26 (Thursday)	0001	31	22	23	1010	SSW	15	11	0.9	3	85	08	0.0
	0600			22	1011	SW	16	12	0.9	3	90	12	0.0
	1200			28	1010	SSW	11	07	0.8	3	71	05	0.0
	1800			26	1009	SSW	12	08	0.8	3	86	08	0.0
03-04-26 (Friday)	0001	31	22	23	1010	SW	16	12	1.0	3	91	10	0.0
	0600			22	1011	SW	17	13	1.0	3	92	15	0.0
	1200			28	1010	SW	13	09	1.0	3	75	08	0.0
	1800			26	1009	SSW	16	12	1.0	3	86	14	0.0

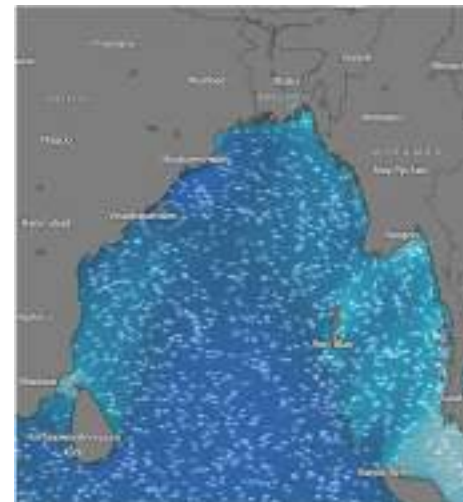
31 Mar 2026



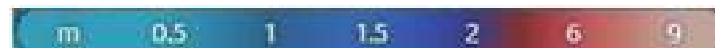
01 Apr 2026



02 Apr 2026



03 Apr 2026



Significant wave height (m)



MARINE WEATHER FORECAST (31 March to 07 April 2026)

PAYRA FAIRWAY (21° 22' N, 090° 6' E)



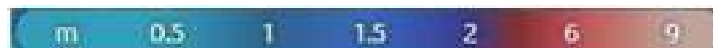
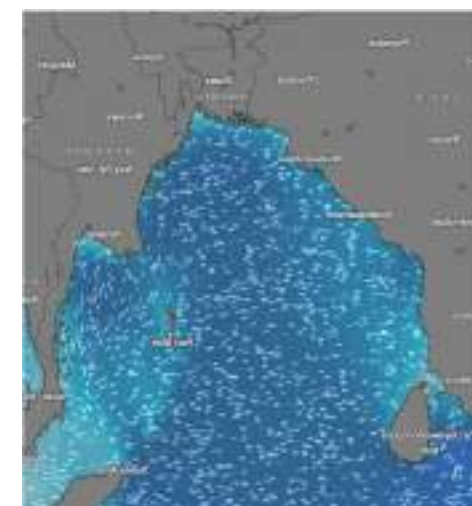
Date	Time	Air Temp (°C)		Sea Surface Temp (°C)	Baro Pressure (mbar)	Wind Direction	Wind Spd (kts)		Wae Ht (m)	Sea State	Humidity (%)	Prob of Rain (%)	Amount of Rain (mm)
		Max	Min				Gusting	Avg					
04-04-26 (Saturday)	0001	31	22	23	1010	SSW	16	12	1.2	3	88	09	0.0
	0600			22	1011	SW	15	11	1.2	3	90	13	0.0
	1200			28	1010	SW	16	12	1.2	3	74	07	0.0
	1800			26	1009	SSW	18	14	1.2	3	87	15	0.0
05-04-26 (Sunday)	0001	31	22	23	1010	SSW	15	11	1.1	3	89	08	0.0
	0600			22	1011	SW	16	12	1.1	3	91	13	0.0
	1200			28	1010	SSW	15	11	1.1	3	75	09	0.0
	1800			26	1009	SSE	17	13	1.1	3	86	16	0.0
06-04-26 (Monday)	0001	31	22	23	1010	SSW	16	12	1.1	3	87	09	0.0
	0600			22	1011	SW	17	12	1.1	3	90	12	0.0
	1200			28	1010	SSW	15	11	1.1	3	72	07	0.0
	1800			26	1009	SSW	16	12	1.1	3	84	12	0.0
07-04-26 (Tuesday)	0001	31	22	23	1010	SSW	12	09	0.9	3	85	10	0.0
	0600			22	1011	SW	11	07	0.9	3	91	13	0.0
	1200			28	1010	SSW	10	07	0.9	3	74	08	0.0
	1800			27	1009	S	12	09	0.9	3	87	11	0.0

04 Apr 2026

05 Apr 2026

06 Apr 2026

07 Apr 2026



Significant wave height (m)



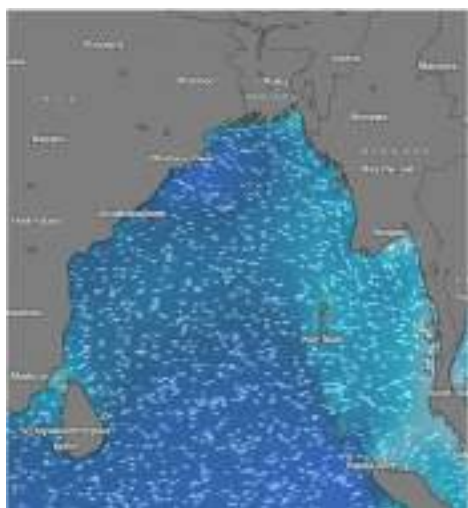
MARINE WEATHER FORECAST (31 March to 07 April 2026)

MONGLA FAIRWAY (21° 26' N, 089° 34' E)

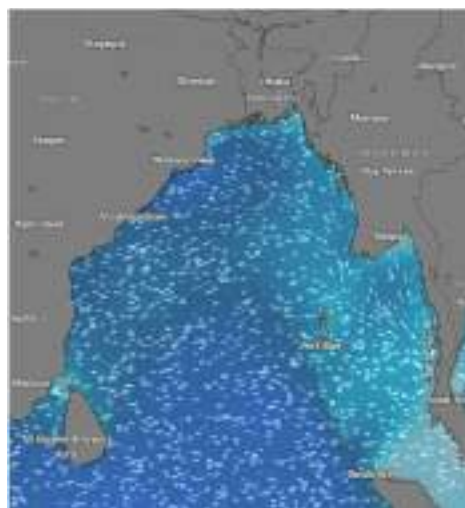


Date	Time	Air Temp (°C)		Sea Surface Temp (°C)	Baro Pressure (mbar)	Wind Direction	Wind Spd (kts)		Wave Ht (m)	Sea State	Humidity (%)	Prob of Rain (%)	Amount of Rain (mm)
		Max	Min				Gusting	Avg					
31-03-26 (Tuesday)	0001	31	22	23	1011	SSW	18	14	0.8	3	87	10	0.0
	0600			22	1012	SSW	15	11	0.8	3	91	15	0.0
	1200			27	1010	SSW	14	10	0.7	3	75	06	0.0
	1800			26	1009	SSW	18	14	0.7	3	86	15	0.0
01-04-26 (Wednesday)	0001	31	22	23	1011	SSW	16	12	1.1	3	88	10	0.0
	0600			22	1012	SW	12	08	1.0	3	92	15	0.0
	1200			27	1010	SSW	12	08	1.0	3	74	07	0.0
	1800			26	1009	SSW	13	09	0.9	3	86	12	0.0
02-04-26 (Thursday)	0001	31	22	23	1010	SSW	16	12	1.0	3	88	09	0.0
	0600			22	1011	SW	17	14	1.0	3	90	12	0.0
	1200			27	1010	SSW	13	09	0.9	3	72	05	0.0
	1800			26	1009	SSW	14	10	0.9	3	85	09	0.0
03-04-26 (Friday)	0001	31	22	23	1010	SSW	16	12	1.1	3	89	10	0.0
	0600			22	1011	SW	17	13	1.1	3	92	15	0.0
	1200			27	1010	SW	17	13	1.1	3	74	07	0.0
	1800			26	1009	SSW	16	12	1.0	3	86	12	0.0

31 Mar 2026



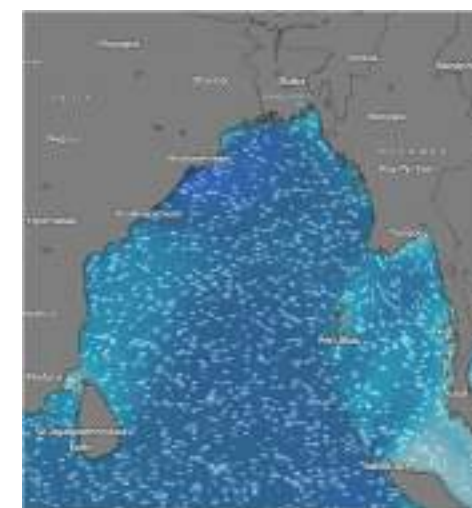
01 Apr 2026



02 Apr 2026



03 Apr 2026



Significant wave height (m)



MARINE WEATHER FORECAST (31 March to 07 April 2026)

MONGLA FAIRWAY (21° 26' N, 089° 34' E)



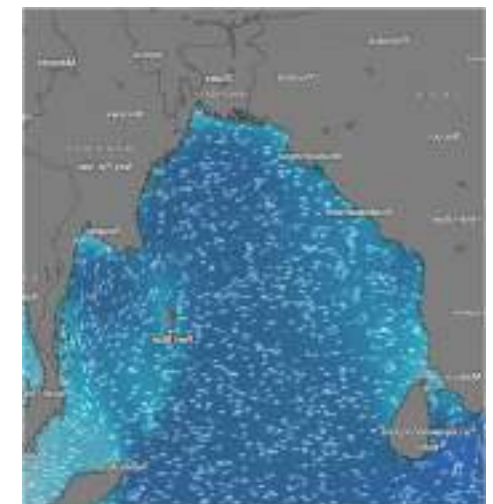
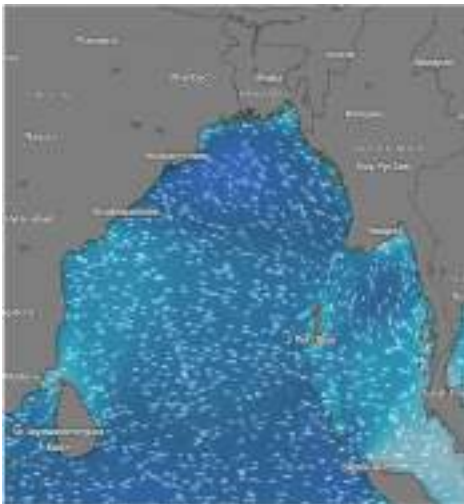
Date	Time	Air Temp (°C)		Sea Surface Temp (°C)	Baro Pressure (mbar)	Wind Direction	Wind Spd (kts)		Wave Ht (m)	Sea State	Humidity (%)	Prob of Rain (%)	Amount of Rain (mm)
		Max	Min				Gusting	Avg					
04-04-26 (Saturday)	0001	31	22	23	1010	SSW	16	12	1.2	3	90	10	0.0
	0600			22	1011	SW	17	13	1.2	3	92	14	0.0
	1200			27	1010	SW	20	15	1.2	3	75	08	0.0
	1800			26	1009	SSW	20	14	1.1	3	87	13	0.0
05-04-26 (Sunday)	0001	31	22	23	1010	SSW	15	11	1.1	3	90	09	0.0
	0600			22	1011	SW	16	12	1.1	3	91	15	0.0
	1200			27	1010	SSW	16	12	1.1	3	74	08	0.0
	1800			26	1009	SSW	17	13	1.1	3	86	14	0.0
06-04-26 (Monday)	0001	31	22	23	1010	SSW	15	11	1.1	3	89	11	0.0
	0600			22	1011	SW	16	12	1.1	3	92	13	0.0
	1200			27	1010	SSW	17	13	1.1	3	75	09	0.0
	1800			26	1009	SSW	18	14	1.0	3	85	13	0.0
07-04-26 (Tuesday)	0001	31	22	23	1010	SSW	13	09	0.9	3	87	10	0.0
	0600			22	1011	SW	10	06	0.9	3	91	12	0.0
	1200			27	1010	SSW	11	08	0.9	3	76	10	0.0
	1800			26	1009	SSW	14	10	0.9	3	88	14	0.0

04 Apr 2026

05 Apr 2026

06 Apr 2026

07 Apr 2026



Significant wave height (m)



MARINE WEATHER FORECAST (31 March to 07 April 2026)

OUTER EEZ (18° 48' N, 090° 30' E)



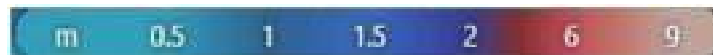
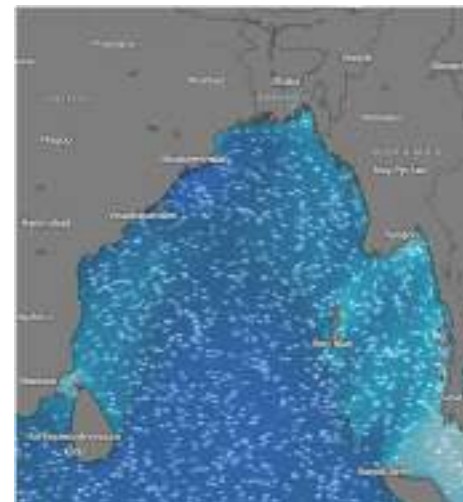
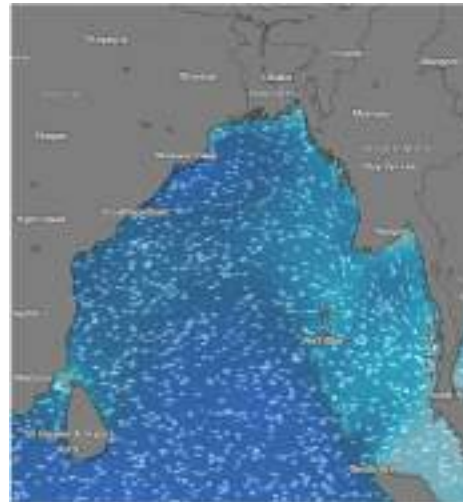
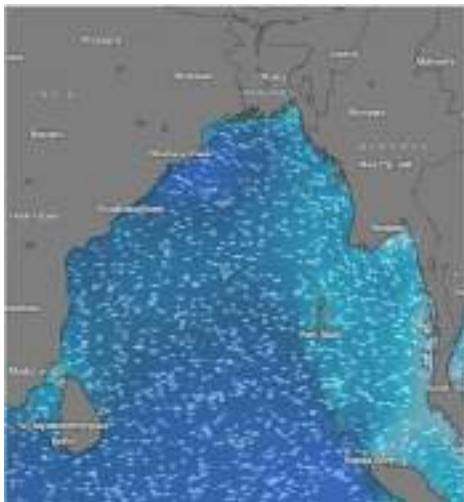
Date	Time	Air Temp (°C)		Sea Surface Temp (°C)	Baro Pressure (mbar)	Wind Direction	Wind Spd (kts)		Wave Ht (m)	Sea State	Humidity (%)	Prob of Rain (%)	Amount of Rain (mm)
		Max	Min				Gusting	Avg					
31-03-26 (Tuesday)	0001	31	22	23	1011	SW	14	10	1.0	3	90	09	0.0
	0600			22	1012	SW	11	07	1.0	3	91	15	0.0
	1200			27	1010	SW	11	07	0.9	3	74	07	0.0
	1800			26	1009	W	13	09	0.9	3	86	13	0.0
01-04-26 (Wednesday)	0001	31	22	23	1011	W	14	10	0.9	3	88	08	0.0
	0600			22	1012	SW	12	08	0.9	3	90	12	0.0
	1200			27	1010	SW	10	06	0.9	3	73	07	0.0
	1800			26	1009	W	11	07	0.9	3	85	13	0.0
02-04-26 (Thursday)	0001	31	22	23	1010	SW	14	10	0.9	3	89	08	0.0
	0600			22	1011	SW	13	09	0.8	3	91	14	0.0
	1200			27	1010	W	12	08	0.8	3	76	06	0.0
	1800			26	1009	W	09	05	0.9	3	87	12	0.0
03-04-26 (Friday)	0001	31	22	23	1010	W	16	12	1.1	3	89	08	0.0
	0600			22	1011	W	15	11	1.1	3	91	12	0.0
	1200			27	1010	W	12	08	1.2	3	74	07	0.0
	1800			26	1009	SW	15	11	1.2	3	86	13	0.0

31 Mar 2026

01 Apr 2026

02 Apr 2026

03 Apr 2026



Significant wave height (m)



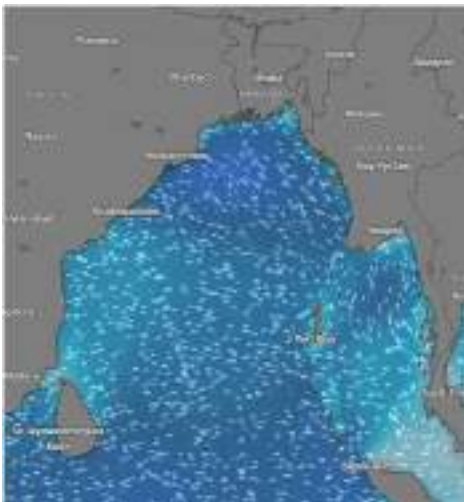
MARINE WEATHER FORECAST (31 March to 07 April 2026)

OUTER EEZ (18° 48' N, 090° 30' E)



Date	Time	Air Temp (°C)		Sea Surface Temp (°C)	Baro Pressure (mbar)	Wind Direction	Wind Spd (kts)		Wave Ht (m)	Sea State	Humidity (%)	Prob of Rain (%)	Amount of Rain (mm)
		Max	Min				Gusting	Avg					
04-04-26 (Saturday)	0001	31	22	23	1010	SW	17	13	1.3	4	90	09	0.0
	0600			22	1011	SW	16	12	1.3	4	92	16	0.0
	1200			27	1010	W	17	13	1.3	4	75	07	0.0
	1800			26	1009	SW	16	12	1.3	4	87	13	0.0
05-04-26 (Sunday)	0001	31	22	23	1010	SW	17	13	1.3	4	90	09	0.0
	0600			22	1011	SE	18	14	1.3	4	89	16	0.0
	1200			27	1010	W	14	10	1.2	3	76	10	0.0
	1800			26	1009	SW	16	12	1.2	3	85	12	0.0
06-04-26 (Monday)	0001	31	22	23	1010	SW	17	13	1.3	4	90	07	0.0
	0600			22	1011	W	18	14	1.3	4	81	15	0.0
	1200			27	1010	W	16	11	1.2	3	76	09	0.0
	1800			26	1009	SW	15	10	1.1	3	85	13	0.0
07-04-26 (Tuesday)	0001	31	22	23	1010	SW	14	10	1.0	3	92	12	0.0
	0600			22	1011	SSW	13	09	1.1	3	83	12	0.0
	1200			27	1010	W	13	09	1.0	3	77	08	0.0
	1800			26	1009	SW	14	10	1.0	3	89	16	0.0

04 Apr 2026



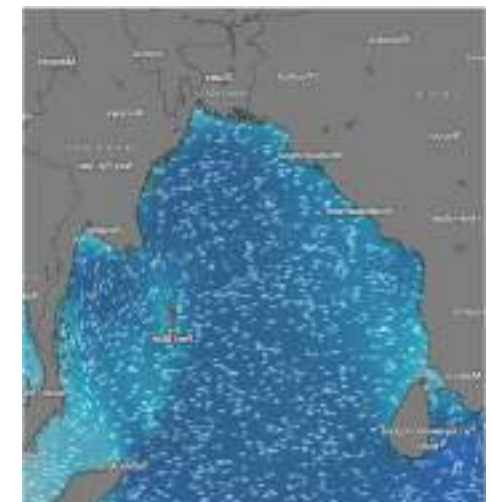
05 Apr 2026



06 Apr 2026



07 Apr 2026



Significant wave height (m)



PREDICTED SURFACE PRESSURE FORECAST (31 Mar to 06 Apr 2026)



31 Mar 2026



01 Apr 2026



02 Apr 2026



03 Apr 2026



04 Apr 2026



05 Apr 2026



06 Apr 2026

