



SUMMARY OF MARINE WEATHER FORECAST COASTAL AREA OF BANGLADESH DATE: 30 JULY TO 06 AUG 2024



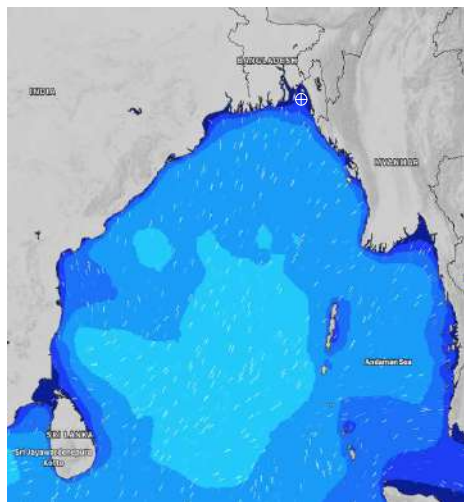
| | |
|---|--|
| Fleet forecast | Monsoon is moderate over North Bay. |
| Wind direction, speed | South/south-easterly 14 kts, (Temporary gusting up to 20 kts). |
| Wave height & sea state | Wave height: 0.3 to 2.4 m (Sea state:1 to 4). |
| Sea surface temperature | 27°C - 29°C (May remain nearly unchanged). |
| Baro pressure | 999 - 1008 mb |
| Rainfall | Rain/thunder showers over Bay of Bengal & adjoining area. |
| Outlook for 30 July to 06 Aug 2024: Rainfall activity may increase initially and decrease at the end of said period. | |

MARINE WEATHER FORECAST- NEAR AUTHORITY BUOY (Lat 22° 12'N, Long 091° 38'E)

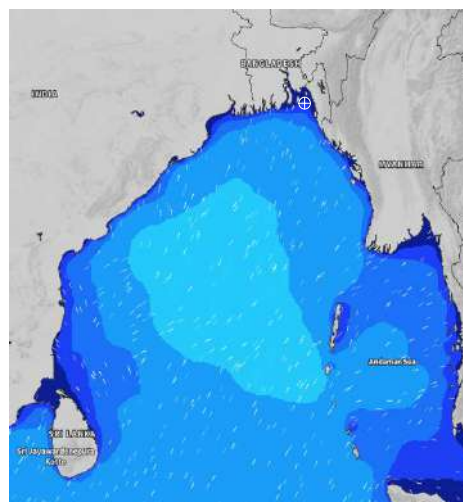
DATE : 30 July to 06 Aug 2024

| Date | Time | Max Wind Spd (kts) | Wind Direction | Wave Ht (m) | Sea State | Baro Pressure | Air Temp | | Sea Surface Temp | Humidity (%) | Prob of Rain (%) | Sea State | Wave Ht (m) |
|----------|------|--------------------|----------------|-------------|-----------|---------------|----------|-----|------------------|--------------|------------------|-----------|-------------|
| | | | | | | | Max | Min | | | | | |
| 30-07-24 | 0001 | 18 | SSE | 0.4 | 2 | 1003 | 30 | 27 | 27 | 90% | 89% (2.5 mm) | 0 | 0 |
| | 0600 | 15 | SSE | 0.4 | 2 | 1002 | | | 27 | 93% | 88% (2.5 mm) | 1 | 0 - 0.1 |
| | 1200 | 16 | S | 0.4 | 2 | 1002 | | | 28 | 88% | 99% (1.5 mm) | 2 | 0.1 - 0.5 |
| | 1800 | 14 | S | 0.3 | 2 | 1001 | | | 28 | 89% | 61% (0.6 mm) | 3 | 0.5 - 1.25 |
| 31-07-24 | 0001 | 14 | SE | 0.3 | 2 | 1004 | 30 | 27 | 27 | 90% | 87% (2.5 mm) | 4 | 1.25 - 2.5 |
| | 0600 | 15 | S | 0.4 | 2 | 1003 | | | 27 | 94% | 88% (1.7 mm) | 5 | 2.5 - 4.0 |
| | 1200 | 16 | SSE | 0.4 | 2 | 1002 | | | 28 | 86% | 96% (2.6 mm) | 6 | 4.0 - 6.0 |
| | 1800 | 16 | SSE | 0.4 | 2 | 1002 | | | 28 | 87% | 76% (1.5 mm) | 7 | 6.0 - 9.0 |
| 01-08-24 | 0001 | 13 | SSE | 0.3 | 2 | 1003 | 30 | 27 | 27 | 91% | 82% (1.5 mm) | 8 | 9.0 - 14.0 |
| | 0600 | 15 | SE | 0.4 | 2 | 1002 | | | 27 | 96% | 97% (2.7 mm) | 9 | Over 14.0 |
| | 1200 | 18 | SSE | 0.4 | 2 | 1003 | | | 28 | 88% | 96% (2.6 mm) | | |
| | 1800 | 17 | SSE | 0.4 | 2 | 1001 | | | 28 | 79% | 75% (1.2 mm) | | |
| 02-08-24 | 0001 | 19 | SE | 0.4 | 2 | 1002 | 30 | 27 | 27 | 92% | 99% (2.7 mm) | | |
| | 0600 | 16 | SE | 0.4 | 2 | 1001 | | | 27 | 94% | 99% (2.8 mm) | | |
| | 1200 | 15 | SE | 0.4 | 2 | 1002 | | | 28 | 87% | 98% (2.5 mm) | | |
| | 1800 | 16 | SSE | 0.4 | 2 | 1001 | | | 28 | 99% | 86% (1.4 mm) | | |

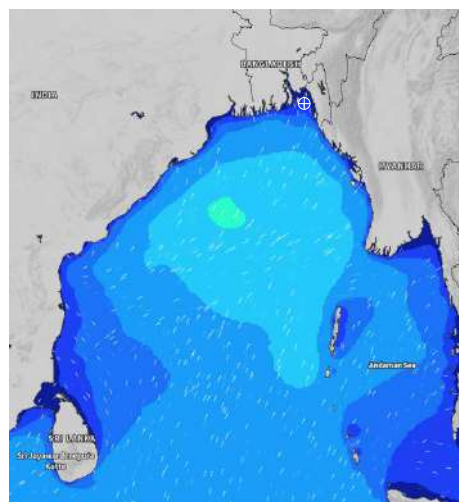
30 July 24 Tue (Probability 98%)



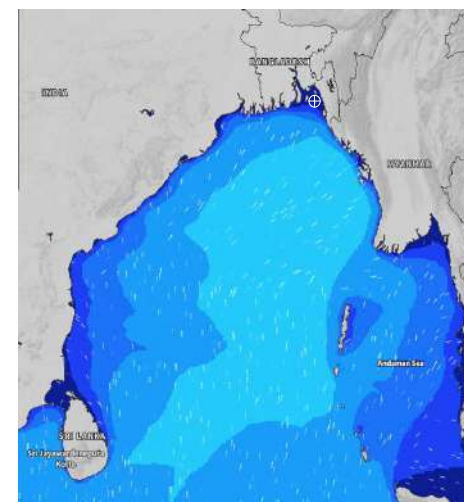
31 July 24 Wed (Probability 95%)



01 Aug 24 Thu (Probability 90%)



02 Aug 24 Fri (Probability 80%)



Significant wave height (m)

MARINE WEATHER FORECAST- NEAR AUTHORITY BUOY (Lat 22° 12'N, Long 091° 38'E)

DATE : 30 July to 06 Aug 2024

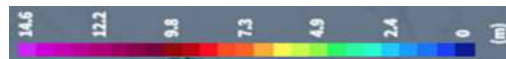
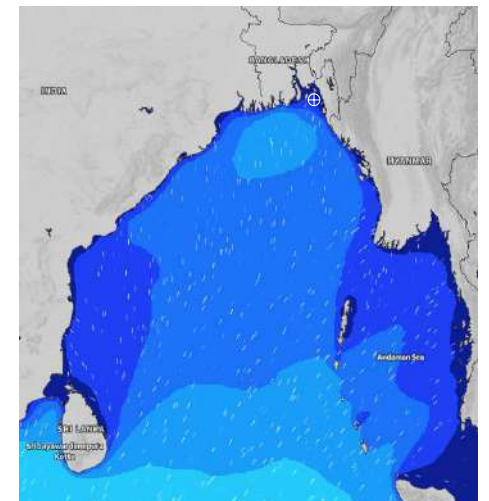
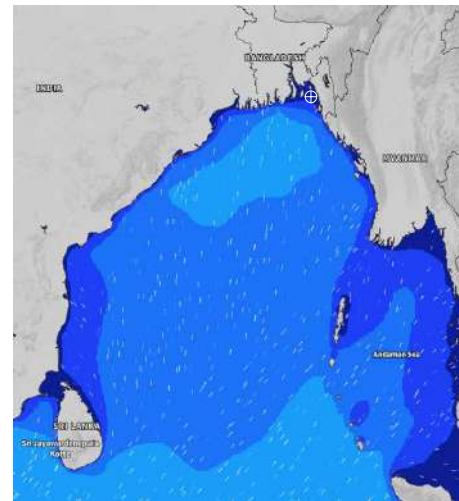
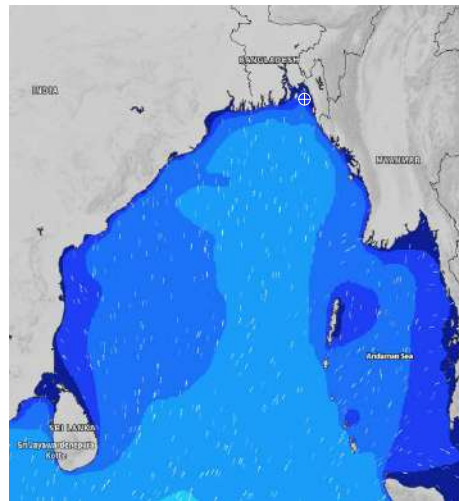
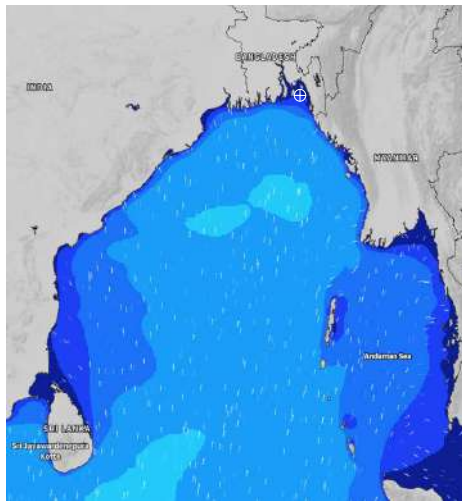
| Date | Time | Max Wind Spd (kts) | Wind Direction | Wave Ht (m) | Sea State | Baro Pressure | Air Temp | | Sea Surface Temp | Humidity (%) | Prob of Rain (%) | Sea State | Wave Ht (m) |
|----------|------|--------------------|----------------|-------------|-----------|---------------|----------|-----|------------------|--------------|------------------|-----------|-------------|
| | | | | | | | Max | Min | | | | | |
| 03-08-24 | 0001 | 14 | SSE | 0.3 | 2 | 1004 | 29 | 26 | 27 | 91% | 88% (1.2 mm) | 0 | 0 |
| | 0600 | 13 | SSE | 0.3 | 2 | 1003 | | | 26 | 94% | 94% (2.5 mm) | 1 | 0 - 0.1 |
| | 1200 | 17 | SSE | 0.4 | 2 | 1005 | | | 27 | 87% | 96% (2.6 mm) | 2 | 0.1 - 0.5 |
| | 1800 | 18 | SSE | 0.4 | 2 | 1005 | | | 26 | 90% | 75% (1.4 mm) | 3 | 0.5 - 1.25 |
| 04-08-24 | 0001 | 15 | SSE | 0.4 | 2 | 1007 | 29 | 26 | 27 | 89% | 89% (1.8 mm) | 4 | 1.25 - 2.5 |
| | 0600 | 15 | SE | 0.4 | 2 | 1007 | | | 26 | 92% | 96% (2.1 mm) | 5 | 2.5 - 4.0 |
| | 1200 | 16 | SSE | 0.3 | 2 | 1007 | | | 27 | 85% | 94% (2.3 mm) | 6 | 4.0 - 6.0 |
| | 1800 | 19 | SSE | 0.4 | 2 | 1006 | | | 26 | 89% | 68% (1.2 mm) | 7 | 6.0 - 9.0 |
| 05-08-24 | 0001 | 16 | SSE | 0.4 | 2 | 1008 | 29 | 26 | 27 | 90% | 67% (1.0 mm) | 8 | 9.0 - 14.0 |
| | 0600 | 17 | SSE | 0.4 | 2 | 1007 | | | 26 | 93% | 61% (0.7 mm) | 9 | Over 14.0 |
| | 1200 | 16 | S | 0.4 | 2 | 1007 | | | 27 | 88% | 66% (0.7 mm) | | |
| | 1800 | 14 | S | 0.3 | 2 | 1005 | | | 26 | 89% | 45% (0.6 mm) | | |
| 06-08-24 | 0001 | 12 | SSE | 0.3 | 2 | 1006 | 29 | 26 | 27 | 90% | 67% (0.7 mm) | | |
| | 0600 | 15 | SSE | 0.4 | 2 | 1005 | | | 26 | 91% | 68% (0.7 mm) | | |
| | 1200 | 17 | SSE | 0.4 | 2 | 1007 | | | 27 | 88% | 60% (0.6 mm) | | |
| | 1800 | 16 | SE | 0.4 | 2 | 1005 | | | 26 | 89% | 51% (0.6 mm) | | |

03 Aug 24 Sat (Probability 70%)

04 Aug 24 Sun (Probability 60%)

05 Aug 24 Mon (Probability 50%)

06 Aug 24 Tue (Probability 50%)



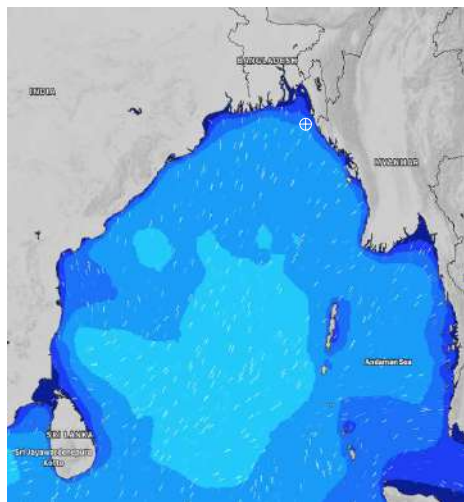
Significant wave height (m)

MARINE WEATHER FORECAST- 20 NM WEST OF ELEPHANT POINT (Lat 21° 10'N, Long 091° 42'E)

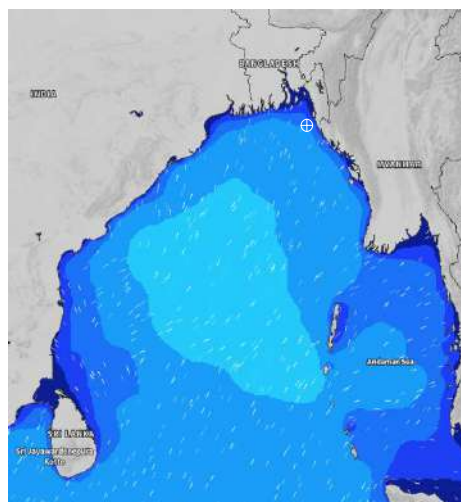
DATE : 30 July to 06 Aug 2024

| Date | Time | Max Wind Spd (kts) | Wind Direction | Wave Ht (m) | Sea State | Baro Pressure | Air Temp | | Sea Surface Temp | Humidity (%) | Prob of Rain (%) | Sea State | Wave Ht (m) |
|----------|------|--------------------|----------------|-------------|-----------|---------------|----------|-----|------------------|--------------|------------------|-----------|-------------|
| | | | | | | | Max | Min | | | | | |
| 30-07-24 | 0001 | 17 | SSE | 1.8 | 4 | 1003 | 30 | 27 | 28 | 90% | 87% (2.4 mm) | 0 | 0 |
| | 0600 | 13 | SSE | 1.6 | 4 | 1002 | | | 27 | 93% | 85% (2.5 mm) | 1 | 0 - 0.1 |
| | 1200 | 14 | SSE | 1.6 | 4 | 1004 | | | 28 | 88% | 98% (1.5 mm) | 2 | 0.1 - 0.5 |
| | 1800 | 11 | SSW | 1.5 | 4 | 1001 | | | 28 | 89% | 66% (0.6 mm) | 3 | 0.5 - 1.25 |
| 31-07-24 | 0001 | 17 | S | 1.7 | 4 | 1004 | 30 | 27 | 27 | 90% | 86% (2.5 mm) | 4 | 1.25 - 2.5 |
| | 0600 | 15 | S | 1.7 | 4 | 1003 | | | 27 | 94% | 85% (1.7 mm) | 5 | 2.5 - 4.0 |
| | 1200 | 12 | SSW | 1.6 | 4 | 1003 | | | 28 | 87% | 97% (2.6 mm) | 6 | 4.0 - 6.0 |
| | 1800 | 16 | SSE | 1.5 | 4 | 1002 | | | 27 | 88% | 78% (1.5 mm) | 7 | 6.0 - 9.0 |
| 01-08-24 | 0001 | 19 | SE | 1.6 | 4 | 1003 | 30 | 27 | 27 | 90% | 86% (1.5 mm) | 8 | 9.0 - 14.0 |
| | 0600 | 17 | SSE | 1.7 | 4 | 1002 | | | 27 | 95% | 95% (2.6 mm) | 9 | Over 14.0 |
| | 1200 | 17 | S | 1.8 | 4 | 1003 | | | 28 | 86% | 97% (2.5 mm) | | |
| | 1800 | 18 | SSE | 1.8 | 4 | 1002 | | | 27 | 89% | 78% (1.2 mm) | | |
| 02-08-24 | 0001 | 20 | SSE | 2.1 | 4 | 1003 | 30 | 27 | 27 | 91% | 96% (2.5 mm) | | |
| | 0600 | 13 | SSW | 1.9 | 4 | 1001 | | | 27 | 95% | 96% (2.6 mm) | | |
| | 1200 | 14 | SSW | 1.7 | 4 | 1002 | | | 28 | 87% | 98% (2.5 mm) | | |
| | 1800 | 16 | SSE | 1.8 | 4 | 1001 | | | 27 | 89% | 87% (1.4 mm) | | |

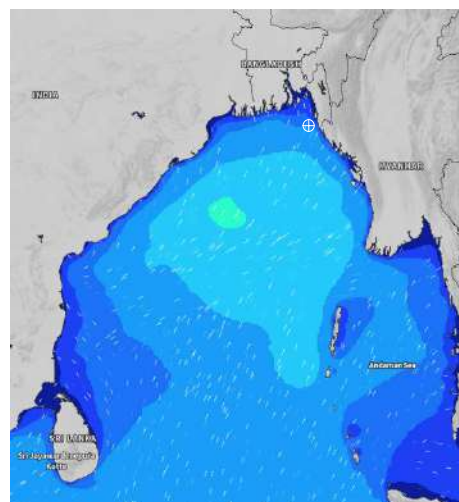
30 July 24 Tue (Probability 98%)



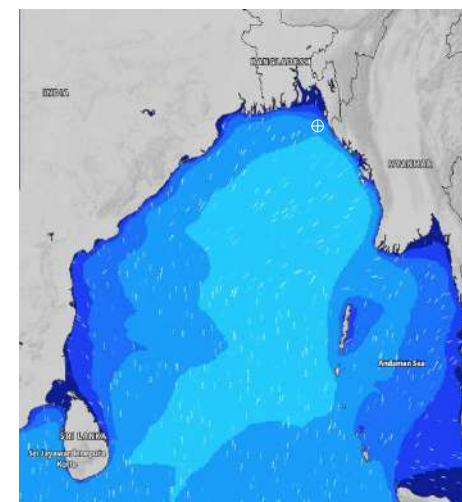
31 July 24 Wed (Probability 95%)



01 Aug 24 Thu (Probability 90%)



02 Aug 24 Fri (Probability 80%)



Significant wave height (m)

MARINE WEATHER FORECAST- 20 NM WEST OF ELEPHANT POINT (Lat 21° 10'N, Long 091° 42'E)

DATE : 30 July to 06 Aug 2024

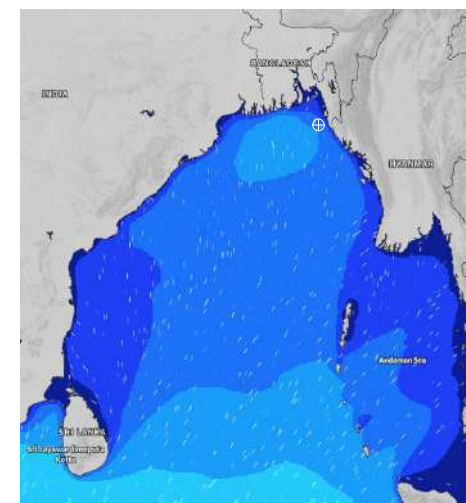
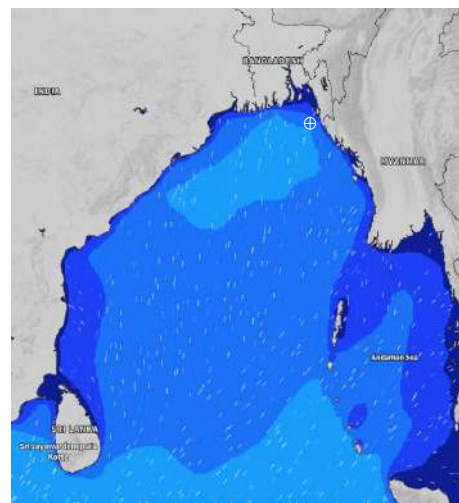
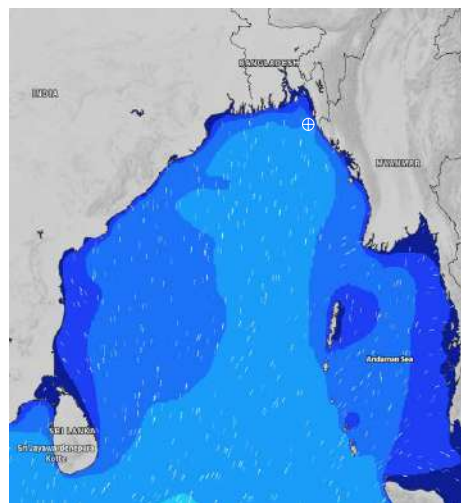
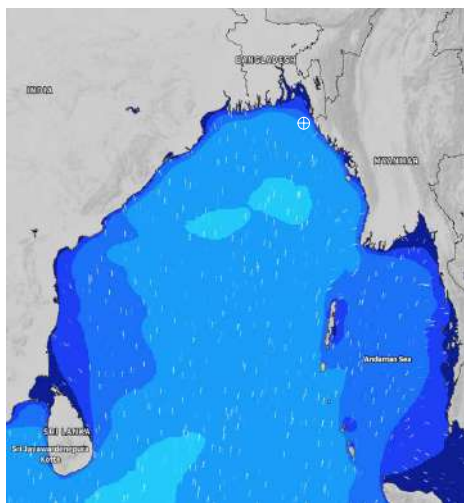
| Date | Time | Max Wind Spd (kts) | Wind Direction | Wave Ht (m) | Sea State | Baro Pressure | Air Temp | | Sea Surface Temp | Humidity (%) | Prob of Rain (%) | Sea State | Wave Ht (m) |
|----------|------|--------------------|----------------|-------------|-----------|---------------|----------|-----|------------------|--------------|------------------|-----------|-------------|
| | | | | | | | Max | Min | | | | | |
| 03-08-24 | 0001 | 14 | SSW | 1.8 | 4 | 1004 | 29 | 26 | 28 | 90% | 88% (1.3 mm) | 0 | 0 |
| | 0600 | 12 | S | 1.8 | 4 | 1003 | | | 27 | 93% | 94% (2.4 mm) | 1 | 0 - 0.1 |
| | 1200 | 16 | SSE | 1.7 | 4 | 1005 | | | 28 | 86% | 96% (2.5 mm) | 2 | 0.1 - 0.5 |
| | 1800 | 19 | SSE | 1.8 | 4 | 1005 | | | 27 | 89% | 75% (1.5 mm) | 3 | 0.5 - 1.25 |
| 04-08-24 | 0001 | 16 | SSE | 1.7 | 4 | 1007 | 29 | 26 | 27 | 91% | 89% (1.7 mm) | 4 | 1.25 - 2.5 |
| | 0600 | 16 | SE | 1.7 | 4 | 1007 | | | 27 | 94% | 96% (2.4 mm) | 5 | 2.5 - 4.0 |
| | 1200 | 20 | SSE | 1.8 | 4 | 1006 | | | 28 | 85% | 94% (2.4 mm) | 6 | 4.0 - 6.0 |
| | 1800 | 17 | S | 1.7 | 4 | 1005 | | | 27 | 89% | 68% (1.5 mm) | 7 | 6.0 - 9.0 |
| 05-08-24 | 0001 | 17 | SSW | 1.8 | 4 | 1006 | 29 | 26 | 28 | 90% | 67% (1.3 mm) | 8 | 9.0 - 14.0 |
| | 0600 | 11 | S | 1.6 | 4 | 1006 | | | 27 | 95% | 61% (0.8 mm) | 9 | Over 14.0 |
| | 1200 | 12 | S | 1.5 | 4 | 1007 | | | 28 | 86% | 66% (0.8 mm) | | |
| | 1800 | 13 | SSW | 1.4 | 4 | 1006 | | | 27 | 89% | 45% (0.6 mm) | | |
| 06-08-24 | 0001 | 13 | S | 1.4 | 4 | 1006 | 29 | 26 | 28 | 90% | 67% (0.8 mm) | | |
| | 0600 | 13 | S | 1.4 | 4 | 1007 | | | 27 | 92% | 68% (0.8 mm) | | |
| | 1200 | 11 | SSW | 1.4 | 4 | 1006 | | | 28 | 84% | 60% (0.7 mm) | | |
| | 1800 | 12 | SSW | 1.4 | 4 | 1005 | | | 28 | 88% | 51% (0.5 mm) | | |

03 Aug 24 Sat (Probability 70%)

04 Aug 24 Sun (Probability 60%)

05 Aug 24 Mon (Probability 50%)

06 Aug 24 Tue (Probability 50%)



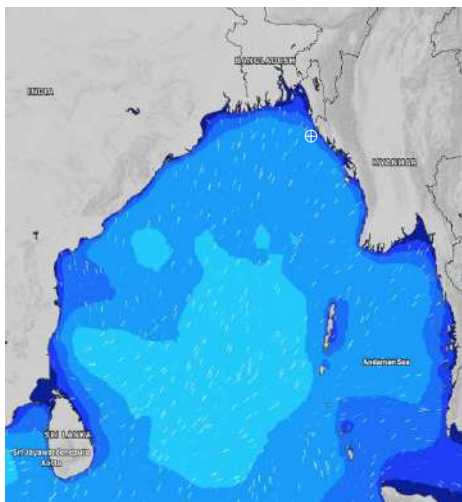
Significant wave height (m)

MARINE WEATHER FORECAST- 15 NM WEST OF ST. MARTIN'S LIGHT HOUSE (Lat 20° 37'N, Long 092° 03'E)

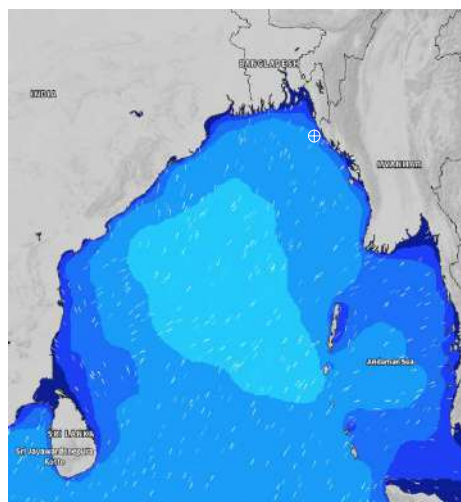
DATE : 30 July to 06 Aug 2024

| Date | Time | Max Wind Spd (kts) | Wind Direction | Wave Ht (m) | Sea State | Baro Pressure | Air Temp | | Sea Surface Temp | Humidity (%) | Prob of Rain(%) | Sea State | Wave Ht (m) |
|----------|------|--------------------|----------------|-------------|-----------|---------------|----------|-----|------------------|--------------|-----------------|-----------|-------------|
| | | | | | | | Max | Min | | | | | |
| 30-07-24 | 0001 | 16 | S | 2.1 | 4 | 1003 | 30 | 27 | 28 | 91% | 79% (1.5 mm) | 0 | 0 |
| | 0600 | 10 | S | 2.0 | 4 | 1002 | | | 27 | 92% | 94% (2.5 mm) | 1 | 0 - 0.1 |
| | 1200 | 9 | S | 1.9 | 4 | 1004 | | | 28 | 87% | 95% (2.6 mm) | 2 | 0.1 - 0.5 |
| | 1800 | 17 | SW | 2.0 | 4 | 1001 | | | 28 | 89% | 64% (1.2 mm) | 3 | 0.5 - 1.25 |
| 31-07-24 | 0001 | 19 | S | 2.1 | 4 | 1005 | 30 | 27 | 28 | 89% | 84% (1.2 mm) | 4 | 1.25 - 2.5 |
| | 0600 | 14 | SSW | 2.0 | 4 | 1003 | | | 27 | 91% | 93% (2.4 mm) | 5 | 2.5 - 4.0 |
| | 1200 | 7 | S | 1.9 | 4 | 1004 | | | 28 | 84% | 95% 2.1 mm) | 6 | 4.0 - 6.0 |
| | 1800 | 9 | S | 1.9 | 4 | 1003 | | | 28 | 88% | 87% (1.0 mm) | 7 | 6.0 - 9.0 |
| 01-08-24 | 0001 | 14 | SSE | 1.9 | 4 | 1004 | 30 | 27 | 28 | 90% | 88% (1.5 mm) | 8 | 9.0 - 14.0 |
| | 0600 | 14 | S | 2.0 | 4 | 1002 | | | 27 | 93% | 98% (2.1 mm) | 9 | Over 14.0 |
| | 1200 | 15 | S | 2.1 | 4 | 1004 | | | 28 | 85% | 96% (2.0 mm) | | |
| | 1800 | 15 | SSW | 2.2 | 4 | 1001 | | | 27 | 88% | 87% (1.2 mm) | | |
| 02-08-24 | 0001 | 19 | S | 2.3 | 4 | 1004 | 30 | 27 | 28 | 91% | 88% (1.4 mm) | | |
| | 0600 | 15 | SSW | 2.4 | 4 | 1001 | | | 27 | 94% | 97% (1.5 mm) | | |
| | 1200 | 16 | SW | 2.4 | 4 | 1002 | | | 28 | 86% | 96% (1.9 mm) | | |
| | 1800 | 14 | SSW | 2.4 | 4 | 1001 | | | 27 | 89% | 85% (0.9 mm) | | |

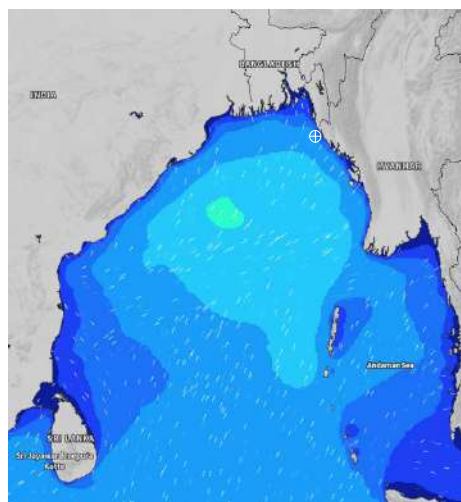
30 July 24 Tue (Probability 98%)



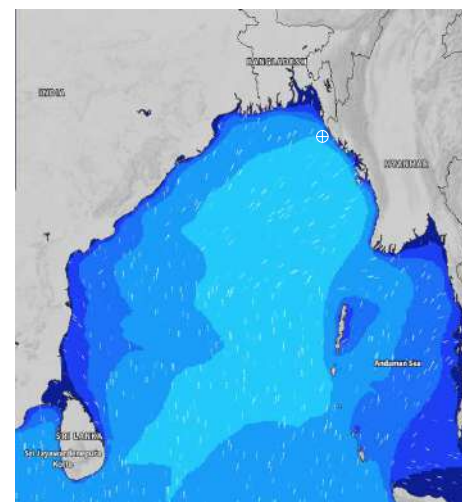
31 July 24 Wed (Probability 95%)



01 Aug 24 Thu (Probability 90%)



02 Aug 24 Fri (Probability 80%)



Significant wave height (m)

MARINE WEATHER FORECAST- 15 NM WEST OF ST. MARTIN'S LIGHT HOUSE (Lat 20° 37'N, Long 092° 03'E)

DATE : 30 July to 06 Aug 2024

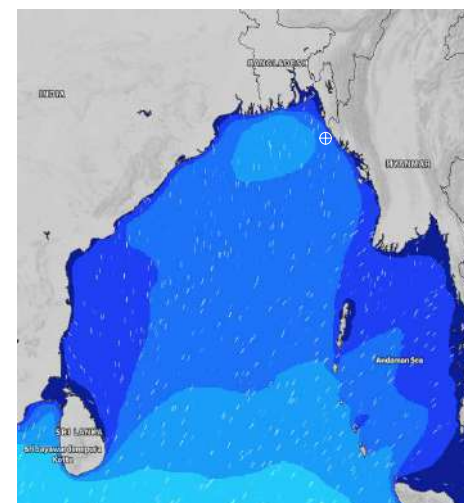
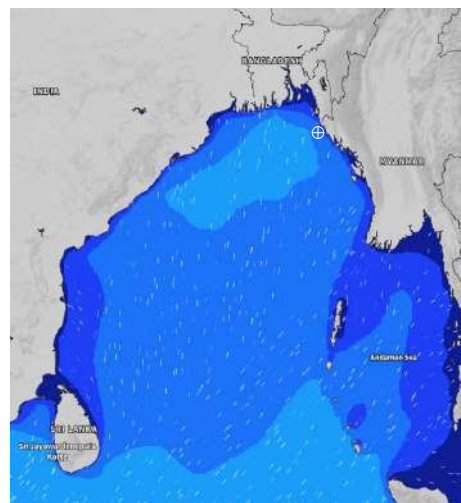
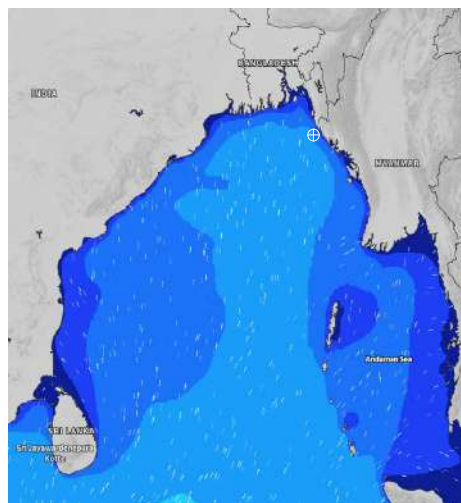
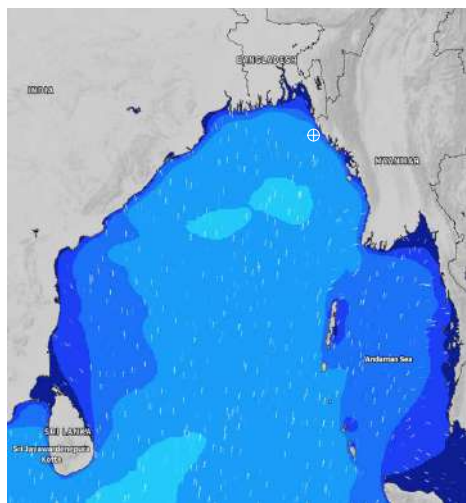
| Date | Time | Max Wind Spd (kts) | Wind Direction | Wave Ht (m) | Sea State | Baro Pressure | Air Temp | | Sea Surface Temp | Humidity (%) | Prob of Rain (%) | Sea State | Wave Ht (m) |
|----------|------|--------------------|----------------|-------------|-----------|---------------|----------|-----|------------------|--------------|------------------|-----------|-------------|
| | | | | | | | Max | Min | | | | | |
| 03-08-24 | 0001 | 14 | SSW | 2.4 | 4 | 1005 | 30 | 26 | 27 | 91% | 79% (0.8 mm) | 0 | 0 |
| | 0600 | 13 | SW | 2.3 | 4 | 1003 | | | 27 | 94% | 65% (0.7 mm) | 1 | 0 - 0.1 |
| | 1200 | 12 | S | 2.2 | 4 | 1005 | | | 28 | 88% | 94% (2.5 mm) | 2 | 0.1 - 0.5 |
| | 1800 | 15 | SSE | 2.1 | 4 | 1005 | | | 27 | 89% | 86% (1.6 mm) | 3 | 0.5 - 1.25 |
| 04-08-24 | 0001 | 13 | SSE | 2.0 | 4 | 1008 | 29 | 26 | 27 | 90% | 57% (0.6 mm) | 4 | 1.25 - 2.5 |
| | 0600 | 16 | SSE | 1.9 | 4 | 1006 | | | 27 | 93% | 95% (1.9 mm) | 5 | 2.5 - 4.0 |
| | 1200 | 15 | SSE | 1.9 | 4 | 1009 | | | 28 | 84% | 92% (2.1 mm) | 6 | 4.0 - 6.0 |
| | 1800 | 15 | S | 1.9 | 4 | 1006 | | | 27 | 88% | 48% (0.5 mm) | 7 | 6.0 - 9.0 |
| 05-08-24 | 0001 | 18 | SSW | 2.1 | 4 | 1009 | 29 | 26 | 28 | 92% | 87% (0.9 mm) | 8 | 9.0 - 14.0 |
| | 0600 | 12 | SSW | 1.9 | 4 | 1007 | | | 27 | 94% | 94% (1.8 mm) | 9 | Over 14.0 |
| | 1200 | 8 | SSW | 1.8 | 4 | 1008 | | | 28 | 87% | 69% (0.7 mm) | | |
| | 1800 | 9 | SW | 1.7 | 4 | 1006 | | | 2 | 89% | 46% (0.5 mm) | | |
| 06-08-24 | 0001 | 12 | SSW | 1.7 | 4 | 1007 | 29 | 26 | 28 | 91% | 88% (0.9 mm) | | |
| | 0600 | 12 | SSW | 1.6 | 4 | 1006 | | | 27 | 93% | 67% (0.7 mm) | | |
| | 1200 | 10 | SSW | 1.6 | 4 | 1008 | | | 28 | 86% | 69% (0.6 mm) | | |
| | 1800 | 11 | SW | 1.6 | 4 | 1006 | | | 28 | 89% | 46% (0.4 mm) | | |

03 Aug 24 Sat (Probability 70%)

04 Aug 24 Sun (Probability 60%)

05 Aug 24 Mon (Probability 50%)

06 Aug 24 Tue (Probability 50%)



Significant wave height (m)

MARINE WEATHER FORECAST- 40 NM ESE OF PAYRA FAIRWAY (Lat 21° 07' N, Long 090° 45' E)

DATE : 30 July to 06 Aug 2024

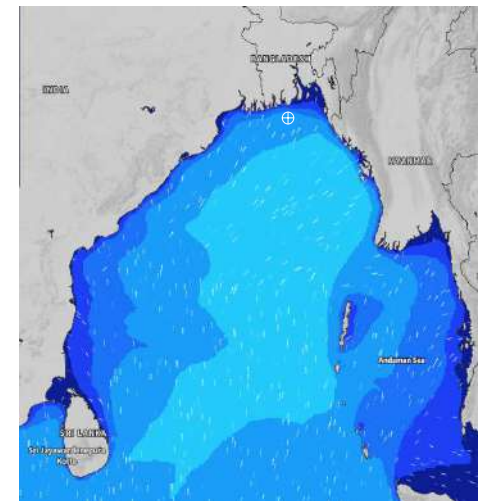
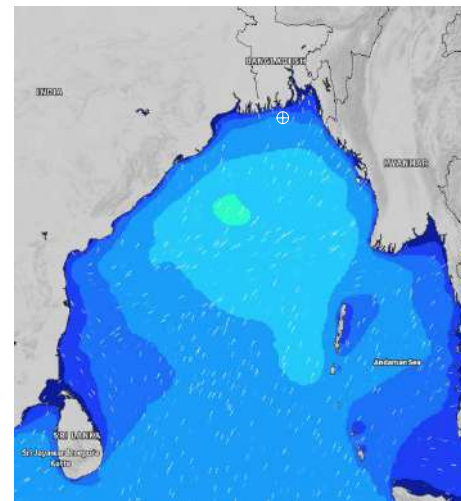
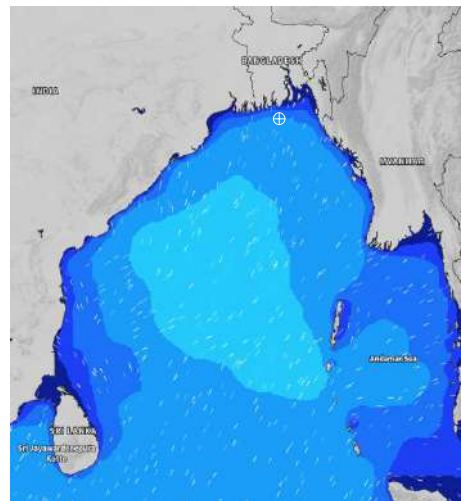
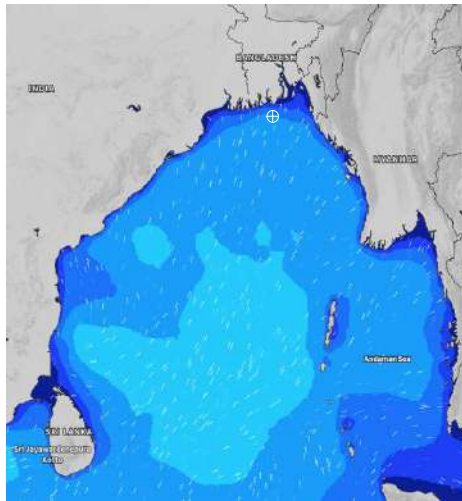
| Date | Time | Max Wind Spd (kts) | Wind Direction | Wave Ht (m) | Sea State | Baro Pressure | Air Temp | | Sea Surface Temp | Humidity (%) | Prob of Rain (%) | Sea State | Wave Ht (m) |
|----------|------|--------------------|----------------|-------------|-----------|---------------|----------|-----|------------------|--------------|------------------|-----------|-------------|
| | | | | | | | Max | Min | | | | | |
| 30-07-24 | 0001 | 17 | S | 2.2 | 4 | 1002 | 30 | 27 | 28 | 91% | 70% (0.8 mm) | 0 | 0 |
| | 0600 | 13 | SW | 2.1 | 4 | 1001 | | | 28 | 92% | 69% (0.9 mm) | 1 | 0 - 0.1 |
| | 1200 | 14 | SSW | 2.0 | 4 | 1002 | | | 29 | 86% | 94% (1.5 mm) | 2 | 0.1 - 0.5 |
| | 1800 | 15 | SW | 2.0 | 4 | 1001 | | | 29 | 89% | 47% (0.5 mm) | 3 | 0.5 - 1.25 |
| 31-07-24 | 0001 | 17 | SSW | 2.1 | 4 | 1003 | 30 | 27 | 28 | 92% | 65% (0.7 mm) | 4 | 1.25 - 2.5 |
| | 0600 | 18 | SSW | 2.1 | 4 | 1002 | | | 28 | 94% | 92% (1.5 mm) | 5 | 2.5 - 4.0 |
| | 1200 | 12 | S | 2.0 | 4 | 1003 | | | 29 | 85% | 94% (1.6 mm) | 6 | 4.0 - 6.0 |
| | 1800 | 14 | SSE | 2.0 | 4 | 1002 | | | 28 | 89% | 46% (0.5 mm) | 7 | 6.0 - 9.0 |
| 01-08-24 | 0001 | 14 | S | 2.0 | 4 | 1002 | 30 | 27 | 28 | 91% | 78% (0.9 mm) | 8 | 9.0 - 14.0 |
| | 0600 | 17 | SSW | 2.1 | 4 | 1001 | | | 27 | 94% | 95% (1.7 mm) | 9 | Over 14.0 |
| | 1200 | 13 | SSW | 2.1 | 4 | 1002 | | | 28 | 84% | 97% (1.8 mm) | | |
| | 1800 | 17 | SSW | 2.2 | 4 | 1000 | | | 27 | 89% | 55% (0.6 mm) | | |
| 02-08-24 | 0001 | 18 | S | 2.4 | 4 | 1001 | 30 | 27 | 27 | 92% | 76% (0.8 mm) | | |
| | 0600 | 15 | SW | 2.4 | 4 | 1000 | | | 27 | 93% | 98% (1.9 mm) | | |
| | 1200 | 16 | SW | 2.4 | 4 | 1001 | | | 29 | 86% | 96% (1.8 mm) | | |
| | 1800 | 13 | SSW | 2.3 | 4 | 1000 | | | 27 | 89% | 54% (0.5 mm) | | |

30 July 24 Tue (Probability 98%)

31 July 24 Wed (Probability 95%)

01 Aug 24 Thu (Probability 90%)

02 Aug 24 Fri (Probability 80%)



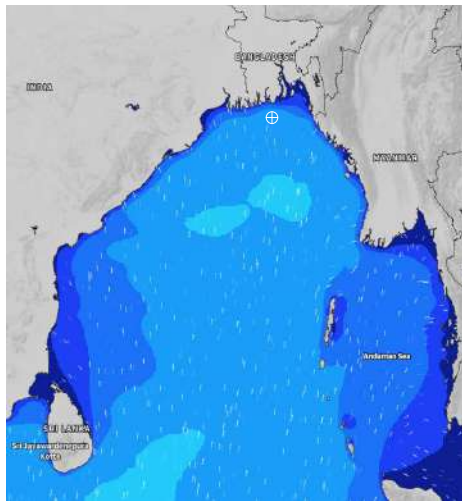
Significant wave height (m)

MARINE WEATHER FORECAST- 40 NM ESE OF PAYRA FAIRWAY (Lat 21° 07' N, Long 090° 45' E)

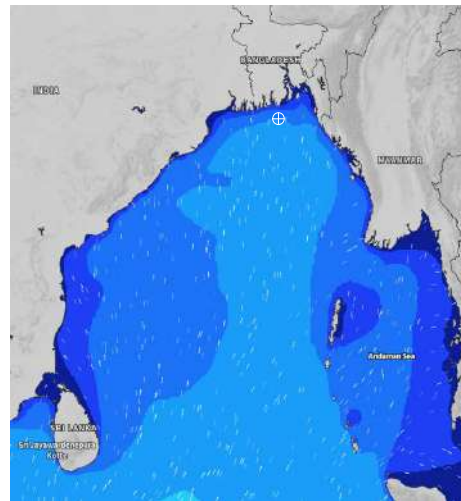
DATE : 30 July to 06 Aug 2024

| Date | Time | Max Wind Spd (kts) | Wind Direction | Wave Ht (m) | Sea State | Baro Pressure | Air Temp | | Sea Surface Temp | Humidity (%) | Prob of Rain (%) | Sea State | Wave Ht (m) |
|----------|------|--------------------|----------------|-------------|-----------|---------------|----------|-----|------------------|--------------|------------------|-----------|-------------|
| | | | | | | | Max | Min | | | | | |
| 03-08-24 | 0001 | 15 | SSW | 2.3 | 4 | 1003 | 30 | 27 | 28 | 89% | 88% (0.9 mm) | 0 | 0 |
| | 0600 | 16 | SSW | 2.3 | 4 | 1003 | | | 27 | 93% | 85% (0.9 mm) | 1 | 0 - 0.1 |
| | 1200 | 18 | S | 2.3 | 4 | 1004 | | | 28 | 85% | 94% (1.5 mm) | 2 | 0.1 - 0.5 |
| | 1800 | 15 | S | 2.2 | 4 | 1004 | | | 28 | 87% | 47% (0.5 mm) | 3 | 0.5 - 1.25 |
| 04-08-24 | 0001 | 16 | S | 2.1 | 4 | 1006 | 30 | 27 | 28 | 91% | 69% (0.8 mm) | 4 | 1.25 - 2.5 |
| | 0600 | 11 | S | 1.9 | 4 | 1005 | | | 27 | 93% | 89% (0.9 mm) | 5 | 2.5 - 4.0 |
| | 1200 | 12 | S | 1.9 | 4 | 1006 | | | 28 | 86% | 88% (1.1 mm) | 6 | 4.0 - 6.0 |
| | 1800 | 18 | SSW | 2.0 | 4 | 1005 | | | 28 | 89% | 52% (0.5 mm) | 7 | 6.0 - 9.0 |
| 05-08-24 | 0001 | 18 | SSW | 2.1 | 4 | 1007 | 30 | 27 | 28 | 90% | 67% (0.7 mm) | 8 | 9.0 - 14.0 |
| | 0600 | 15 | SW | 2.0 | 4 | 1006 | | | 27 | 92% | 66% (0.7 mm) | 9 | Over 14.0 |
| | 1200 | 15 | SSW | 1.9 | 4 | 1007 | | | 28 | 85% | 72% (0.8 mm) | | |
| | 1800 | 16 | SSW | 1.9 | 4 | 1005 | | | 29 | 89% | 25% (0.1 mm) | | |
| 06-08-24 | 0001 | 13 | SSW | 1.8 | 4 | 1006 | 30 | 27 | 28 | 91% | 67% (0.7 mm) | | |
| | 0600 | 17 | SW | 1.8 | 4 | 1005 | | | 27 | 93% | 64% (0.6 mm) | | |
| | 1200 | 14 | SSW | 1.8 | 4 | 1005 | | | 28 | 86% | 76% (0.7 mm) | | |
| | 1800 | 15 | SSW | 1.8 | 4 | 1004 | | | 29 | 89% | 23% (0.0 mm) | | |

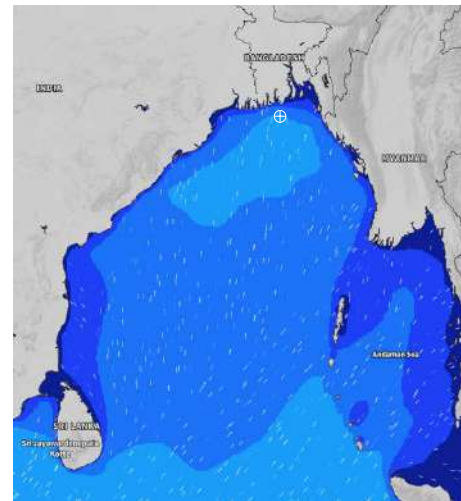
03 Aug 24 Sat (Probability 70%)



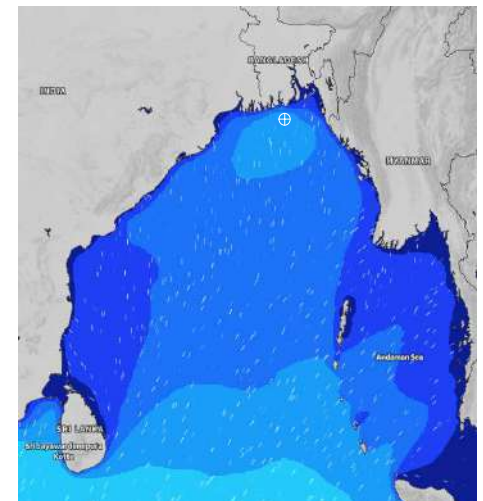
04 Aug 24 Sun (Probability 60%)



05 Aug 24 Mon (Probability 50%)



06 Aug 24 Tue (Probability 50%)



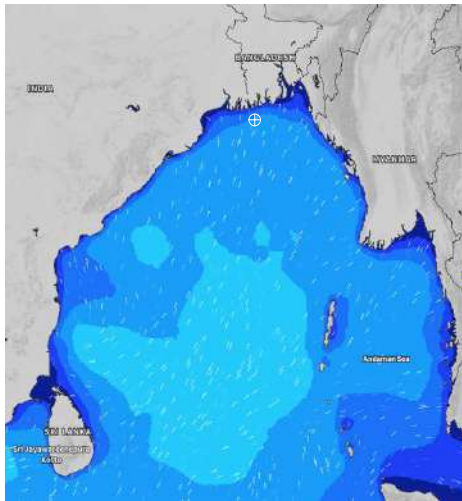
Significant wave height (m)

MARINE WEATHER FORECAST- 10 NM SOUTH OF MONGLA FAIRWAY (Lat 21° 16'N, Long 089° 34'E)

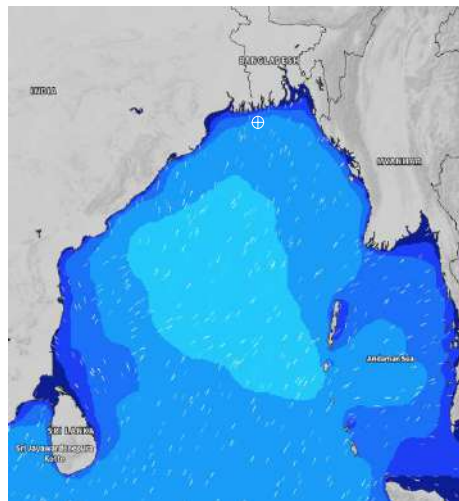
DATE : 30 July to 06 Aug 2024

| Date | Time | Max Wind Spd (kts) | Wind Direction | Wave Ht (m) | Sea State | Baro Pressure | Air Temp | | Sea Surface Temp | Humidity (%) | Prob of Rain (%) | Sea State | Wave Ht (m) |
|----------|------|--------------------|----------------|-------------|-----------|---------------|----------|-----|------------------|--------------|------------------|-----------|-------------|
| | | | | | | | Max | Min | | | | | |
| 30-07-24 | 0001 | 15 | SSW | 2.1 | 4 | 1001 | 30 | 27 | 28 | 89% | 30% (0.2 mm) | 0 | 0 |
| | 0600 | 14 | SW | 2.0 | 4 | 1000 | | | 28 | 91% | 82% (0.9 mm) | 1 | 0 - 0.1 |
| | 1200 | 14 | SSW | 2.0 | 4 | 1001 | | | 29 | 88% | 76% (0.7 mm) | 2 | 0.1 - 0.5 |
| | 1800 | 13 | SSW | 1.9 | 4 | 1000 | | | 29 | 89% | 28% (0.1 mm) | 3 | 0.5 - 1.25 |
| 31-07-24 | 0001 | 16 | SSW | 2.0 | 4 | 1002 | 30 | 27 | 28 | 91% | 44% (0.5 mm) | 4 | 1.25 - 2.5 |
| | 0600 | 16 | SSW | 2.0 | 4 | 1001 | | | 28 | 93% | 86% (0.9 mm) | 5 | 2.5 - 4.0 |
| | 1200 | 10 | SSW | 2.0 | 4 | 1002 | | | 29 | 81% | 92% (1.8 mm) | 6 | 4.0 - 6.0 |
| | 1800 | 14 | S | 2.0 | 4 | 1000 | | | 29 | 88% | 44% (0.4 mm) | 7 | 6.0 - 9.0 |
| 01-08-24 | 0001 | 14 | S | 2.0 | 4 | 1001 | 30 | 27 | 28 | 90% | 43% (0.5 mm) | 8 | 9.0 - 14.0 |
| | 0600 | 15 | SSW | 1.9 | 4 | 1000 | | | 28 | 93% | 86% (0.8 mm) | 9 | Over 14.0 |
| | 1200 | 16 | SSW | 2.0 | 4 | 1000 | | | 29 | 87% | 98% (1.7 mm) | | |
| | 1800 | 17 | SSW | 2.1 | 4 | 999 | | | 29 | 89% | 44% (0.5 mm) | | |
| 02-08-24 | 0001 | 18 | SSW | 2.1 | 4 | 1000 | 30 | 27 | 28 | 91% | 45% (0.5 mm) | | |
| | 0600 | 17 | SW | 2.1 | 4 | 999 | | | 28 | 94% | 86% (0.8 mm) | | |
| | 1200 | 17 | SSW | 2.1 | 4 | 1001 | | | 29 | 84% | 92% (1.8 mm) | | |
| | 1800 | 15 | SSW | 2.0 | 4 | 1000 | | | 29 | 89% | 43% (0.5 mm) | | |

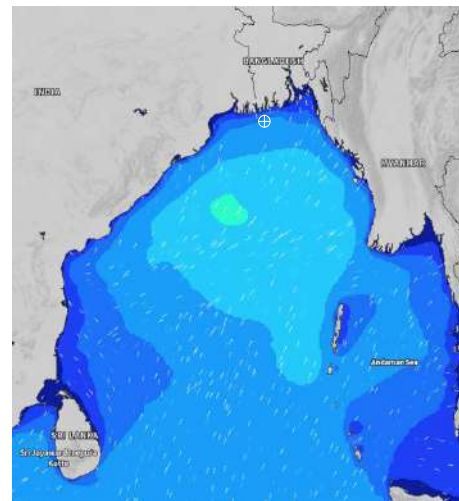
30 July 24 Tue (Probability 98%)



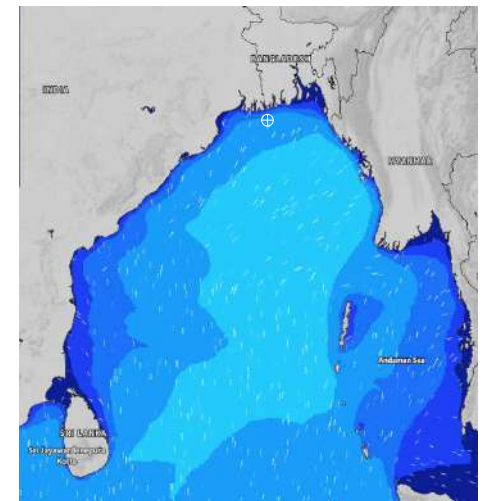
31 July 24 Wed (Probability 95%)



01 Aug 24 Thu (Probability 90%)



02 Aug 24 Fri (Probability 80%)



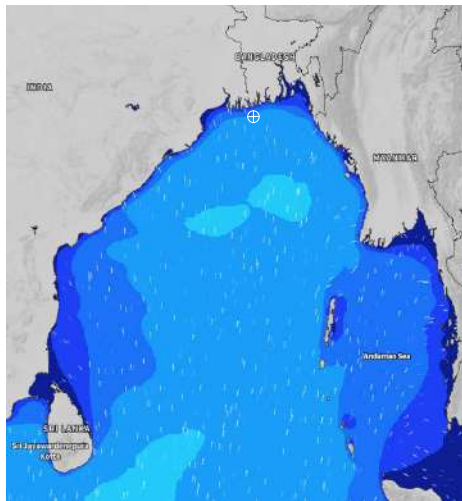
Significant wave height (m)

MARINE WEATHER FORECAST- 10 NM SOUTH OF MONGLA FAIRWAY (Lat 21° 16'N, Long 089° 34'E)

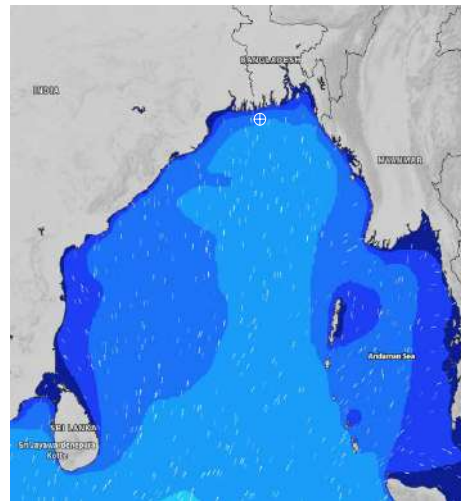
DATE : 30 July to 06 Aug 2024

| Date | Time | Max Wind Spd (kts) | Wind Direction | Wave Ht (m) | Sea State | Baro Pressure | Air Temp | | Sea Surface Temp | Humidity (%) | Prob of Rain (%) | Sea State | Wave Ht (m) |
|----------|------|--------------------|----------------|-------------|-----------|---------------|----------|-----|------------------|--------------|------------------|-----------|-------------|
| | | | | | | | Max | Min | | | | | |
| 03-08-24 | 0001 | 15 | SSW | 2.1 | 4 | 1002 | 30 | 27 | 28 | 91% | 76% (0.8 mm) | 0 | 0 |
| | 0600 | 17 | SSW | 2.3 | 4 | 1001 | | | 27 | 93% | 51% (0.5 mm) | 1 | 0 - 0.1 |
| | 1200 | 14 | SSW | 2.1 | 4 | 1003 | | | 29 | 87% | 87% (0.9 mm) | 2 | 0.1 - 0.5 |
| | 1800 | 12 | SSW | 2.0 | 4 | 1002 | | | 28 | 88% | 32% (0.2 mm) | 3 | 0.5 - 1.25 |
| 04-08-24 | 0001 | 16 | SSW | 1.9 | 4 | 1005 | 30 | 27 | 28 | 90% | 34% (0.2 mm) | 4 | 1.25 - 2.5 |
| | 0600 | 12 | SSW | 1.8 | 4 | 1004 | | | 27 | 93% | 36% (0.3 mm) | 5 | 2.5 - 4.0 |
| | 1200 | 14 | SSW | 1.8 | 4 | 1006 | | | 28 | 81% | 78% (0.8 mm) | 6 | 4.0 - 6.0 |
| | 1800 | 16 | SSW | 1.9 | 4 | 1004 | | | 29 | 88% | 22% (0.0 mm) | 7 | 6.0 - 9.0 |
| 05-08-24 | 0001 | 17 | SW | 1.9 | 4 | 1007 | 30 | 27 | 28 | 90% | 39% (0.4 mm) | 8 | 9.0 - 14.0 |
| | 0600 | 16 | SW | 2.0 | 4 | 1006 | | | 27 | 93% | 36% (0.3 mm) | 9 | Over 14.0 |
| | 1200 | 15 | SW | 1.9 | 4 | 1006 | | | 28 | 85% | 68% (0.7 mm) | | |
| | 1800 | 15 | SSW | 1.9 | 4 | 1003 | | | 29 | 88% | 27% (0.1 mm) | | |
| 06-08-24 | 0001 | 13 | SSW | 1.7 | 4 | 1005 | 30 | 27 | 28 | 91% | 36% (0.2 mm) | | |
| | 0600 | 16 | SW | 1.7 | 4 | 1004 | | | 27 | 94% | 39% (0.3 mm) | | |
| | 1200 | 19 | SSW | 1.8 | 4 | 1005 | | | 29 | 88% | 68% (0.7 mm) | | |
| | 1800 | 17 | SSW | 1.7 | 4 | 1004 | | | 29 | 89% | 27% (0.1 mm) | | |

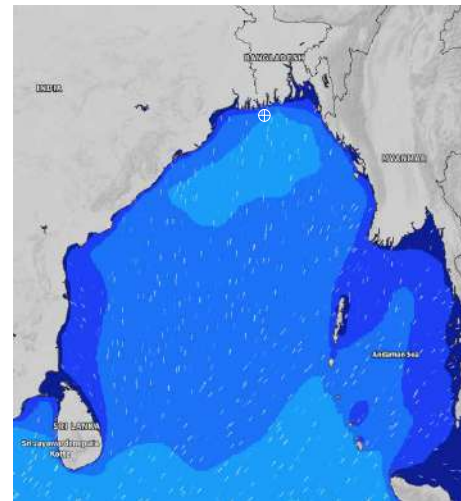
03 Aug 24 Sat (Probability 70%)



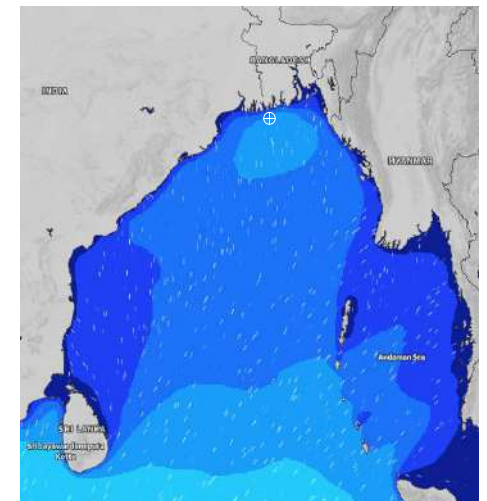
04 Aug 24 Sun (Probability 60%)



05 Aug 24 Mon (Probability 50%)



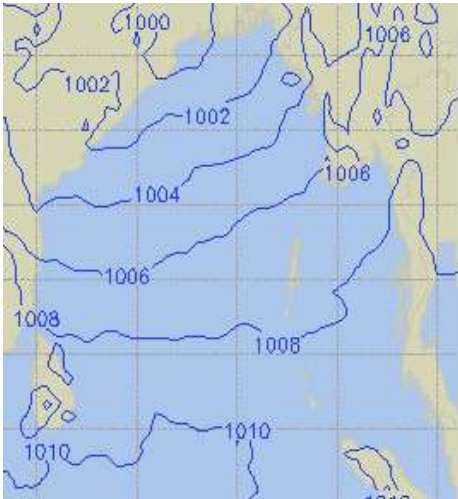
06 Aug 24 Tue (Probability 50%)



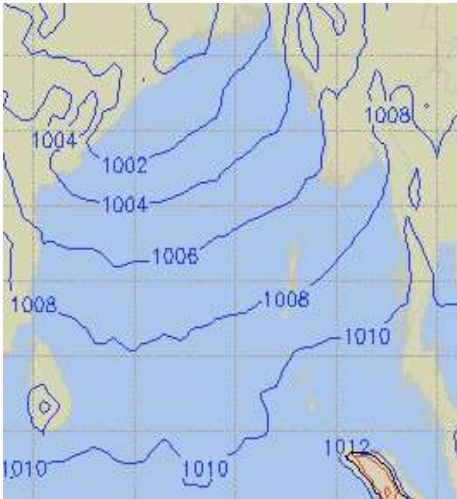
Significant wave height (m)

PREDICTED SURFACE PRESSURE FORECAST (30 July to 05 Aug 2024)

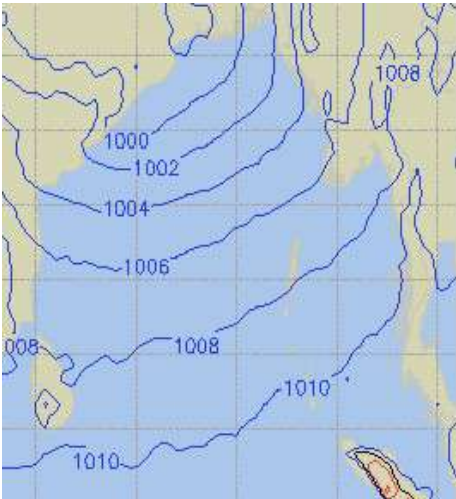
30 July 24 Tue (Probability 98%)



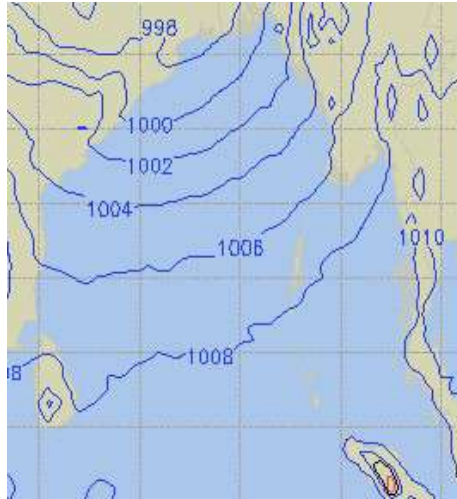
31 July 24 Wed (Probability 95%)



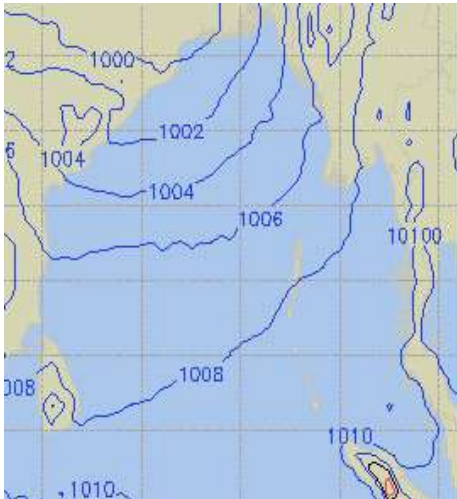
01 Aug 24 Thu (Probability 90%)



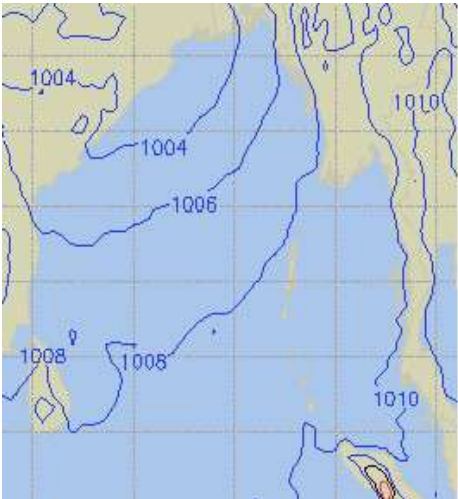
02 Aug 24 Fri (Probability 80%)



03 Aug 24 Sat (Probability 70%)



04 Aug 24 Sun (Probability 60%)



05 Aug 24 Mon (Probability 50%)

