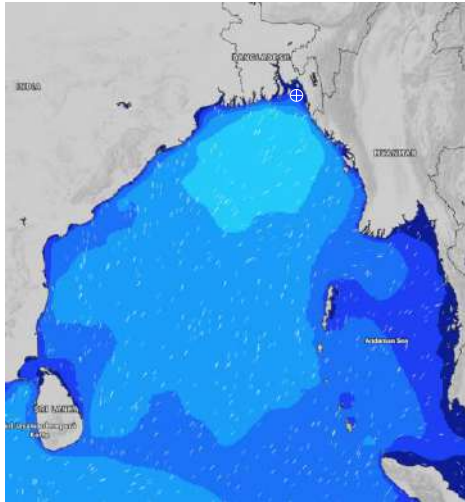


# MARINE WEATHER FORECAST- NEAR AUTHORITY BUOY (Lat 22° 12' N, Long 091° 38' E)

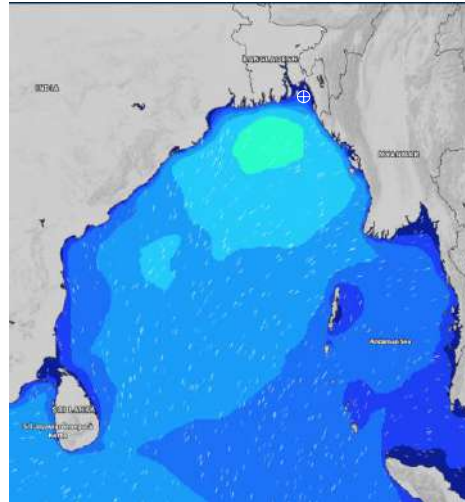
**DATE : 30 June to 07 July 2024**

Date	Time	Max Wind Spd (kts)	Wind Direction	Wave Ht (m)	Sea State	Baro Pressure	Air Temp		Sea Surface Temp	Humidity (%)	Prb of Rain (%)	Sea State	Wave Ht (m)
							Max	Min					
30-06-24	0001	26	SSE	0.5	2	1004	28	26	28	95%	32% (0.2 mm)	0	0
	0600	25	SSE	0.5	2	1003			28	98%	74% (1.1 mm)	1	0 - 0.1
	1200	24	S	0.5	2	1004			28	96%	98% (4.0 mm)	2	0.1 - 0.5
	1800	24	SSW	0.5	2	1002			28	93%	88% (1.9 mm)	3	0.5 - 1.25
01-07-24	0001	23	SSE	0.5	2	1003	28	26	28	93%	83% (2.3 mm)	4	1.25 - 2.5
	0600	21	SSW	0.5	2	1002			28	94%	97% (2.4 mm)	5	2.5 - 4.0
	1200	22	SW	0.5	2	1002			28	94%	91% (2.5 mm)	6	4.0 - 6.0
	1800	21	SW	0.5	2	1001			28	94%	79% (2.1 mm)	7	6.0 - 9.0
02-07-24	0001	15	SSW	0.3	2	1002	27	26	28	94%	83% (2.3 mm)	8	9.0 - 14.0
	0600	12	WSW	0.3	2	1000			28	96%	97% (2.4 mm)	9	Over 14.0
	1200	6	SSW	0.1	1	1001			27	96%	95% (2.5 mm)		
	1800	14	SE	0.3	2	1000			27	94%	90% (2.1 mm)		
03-07-24	0001	16	SSE	0.3	2	1002	28	26	26	94%	83% (2.3 mm)		
	0600	18	SE	0.3	2	1002			26	95%	97% (2.4 mm)		
	1200	16	S	0.3	2	1003			27	94%	95% (2.5 mm)		
	1800	20	SE	0.4	2	1003			27	93%	90% (2.1 mm)		

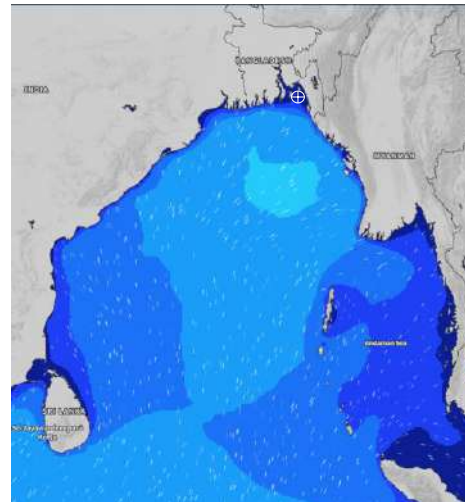
**30 June 24 Sun (Probability 98%)**



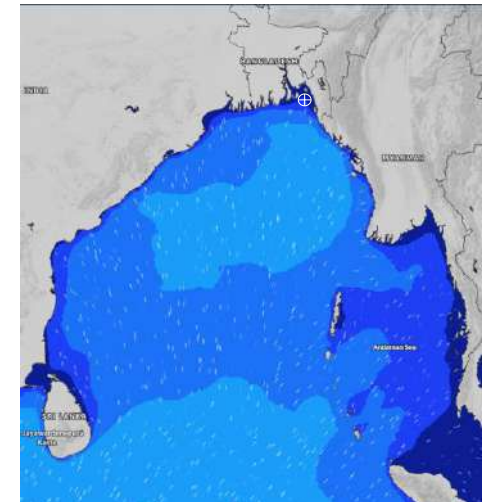
**01 July 24 Mon (Probability 95%)**



**02 July 24 Tue (Probability 90%)**



**03 July 24 Wed (Probability 80%)**



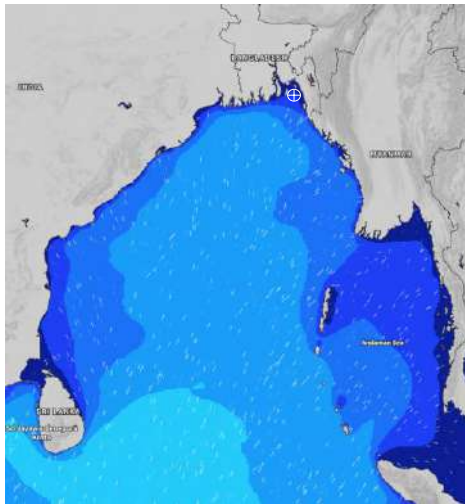
Significant wave height (m)

**MARINE WEATHER FORECAST- NEAR AUTHORITY BUOY (Lat 22° 12'N, Long 091° 38'E)**

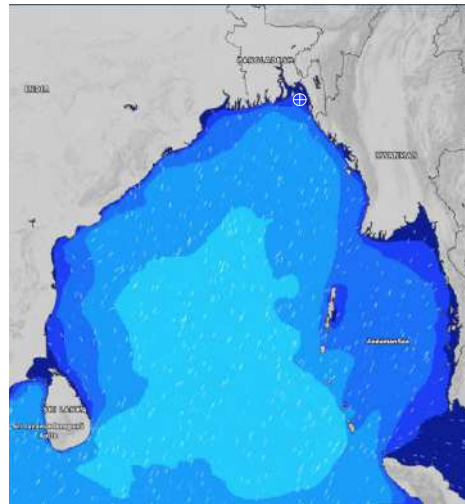
**DATE : 30 June to 07 July 2024**

Date	Time	Max Wind Spd (kts)	Wind Direction	Wave Ht (m)	Sea State	Baro Pressure	Air Temp		Sea Surface Temp	Humidity (%)	Prob of Rain (%)	Sea State	Wave Ht (m)
							Max	Min					
04-07-24	0001	24	SSE	0.4	2	1005	28	26	26	93%	78% (1.4 mm)	0	0
	0600	21	SSE	0.4	2	1005			27	94%	81% (1.5 mm)	1	0 - 0.1
	1200	21	SSE	0.4	2	1006			28	94%	69% (1.1 mm)	2	0.1 - 0.5
	1800	20	SSE	0.4	2	1005			28	94%	70% (1.4 mm)	3	0.5 - 1.25
05-07-24	0001	21	SSE	0.4	2	1006	29	26	27	94%	81% (1.5 mm)	4	1.25 - 2.5
	0600	21	SSE	0.4	2	1005			27	96%	75% (1.1 mm)	5	2.5 - 4.0
	1200	20	S	0.4	2	1004			29	96%	66% (1.3 mm)	6	4.0 - 6.0
	1800	20	S	0.4	2	1002			29	94%	69% (1.4 mm)	7	6.0 - 9.0
06-07-24	0001	23	SSE	0.4	2	1004	30	26	27	90%	71% (0.6 mm)	8	9.0 - 14.0
	0600	21	SSE	0.4	2	1002			27	92%	53% (0.4 mm)	9	Over 14.0
	1200	19	S	0.4	2	1002			29	89%	36% (0.2 mm)		
	1800	15	S	0.3	2	1001			29	90%	24% (0.1 mm)		
07-07-24	0001	20	SE	0.3	2	1002	31	26	27	90%	61% (0.6 mm)		
	0600	14	SSE	0.2	2	1001			27	92%	53% (0.4 mm)		
	1200	12	S	0.1	1	1002			29	89%	36% (0.2 mm)		
	1800	14	S	0.3	2	1000			29	90%	30% (0.2 mm)		

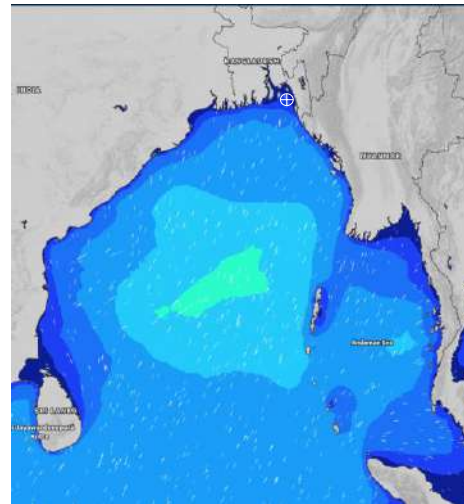
**04 July 24 Thu (Probability 70%)**



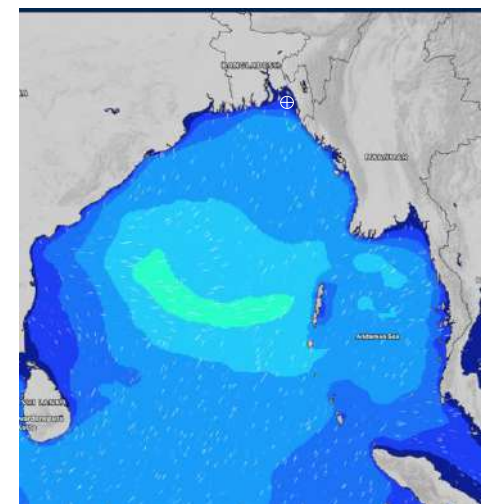
**05 July 24 Fri (Probability 60%)**



**06 July 24 Sat (Probability 50%)**



**07 July 24 Sun (Probability 50%)**



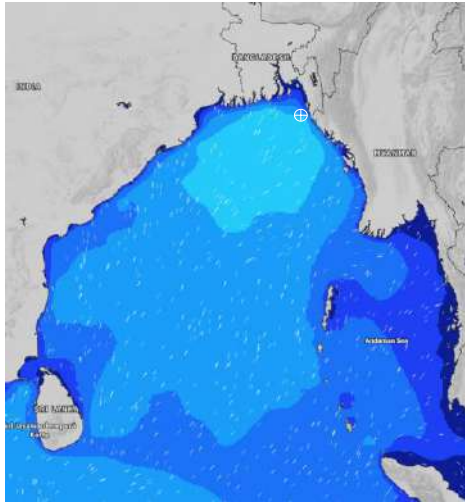
Significant wave height (m)

# MARINE WEATHER FORECAST- 20 NM WEST OF ELEPHANT POINT (Lat 21° 10' N, Long 091° 42' E)

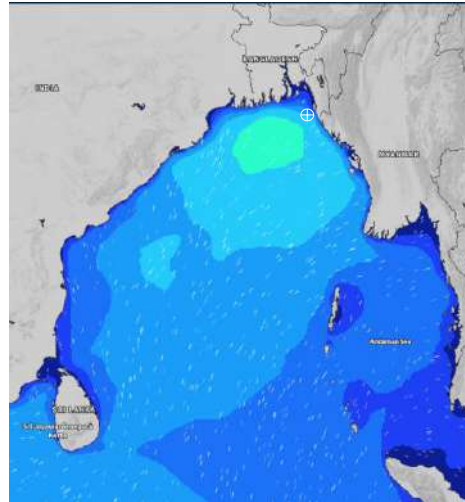
**DATE : 30 June to 07 July 2024**

Date	Time	Max Wind Spd (kts)	Wind Direction	Wave Ht (m)	Sea State	Baro Pressure	Air Temp		Sea Surface Temp	Humidity (%)	Prob of Rain (%)	Sea State	Wave Ht (m)
							Max	Min					
30-06-24	0001	25	S	2.2	4	1004	28	27	29	91%	66% (0.6 mm)	0	0
	0600	23	S	2.2	4	1003			29	93%	93% (3.8 mm)	1	0 - 0.1
	1200	25	SSW	2.2	4	1004			29	93%	98% (1.7 mm)	2	0.1 - 0.5
	1800	26	SSW	2.3	4	1003			29	94%	90% (2.4 mm)	3	0.5 - 1.25
01-07-24	0001	27	SSW	2.2	4	1004	28	26	29	93%	90% (2.3 mm)	4	1.25 - 2.5
	0600	26	SW	2.3	4	1003			29	94%	92% (2.4 mm)	5	2.5 - 4.0
	1200	28	SW	2.4	4	1004			29	96%	90% (2.5 mm)	6	4.0 - 6.0
	1800	23	SW	2.3	4	1002			29	95%	80% (2.1 mm)	7	6.0 - 9.0
02-07-24	0001	21	SW	2.1	4	1002	28	26	29	93%	83% (2.3 mm)	8	9.0 - 14.0
	0600	18	SW	2.0	4	1001			28	95%	97% (2.4 mm)	9	Over 14.0
	1200	17	SW	1.8	4	1001			28	97%	95% (2.5 mm)		
	1800	14	SSW	1.7	4	1000			28	95%	90% (2.1 mm)		
03-07-24	0001	14	SSW	1.6	4	1002	28	26	27	95%	83% (2.3 mm)		
	0600	10	SSW	1.5	4	1002			27	96%	97% (2.4 mm)		
	1200	14	SSW	1.5	4	1003			27	94%	95% (2.5 mm)		
	1800	17	SSW	1.6	4	1003			27	94%	90% (2.1 mm)		

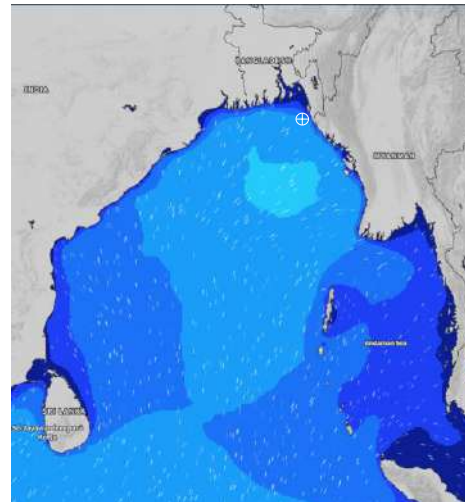
**30 June 24 Sun (Probability 98%)**



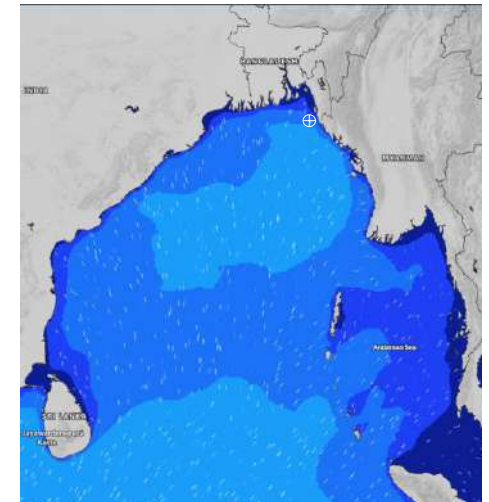
**01 July 24 Mon (Probability 95%)**



**02 July 24 Tue (Probability 90%)**



**03 July 24 Wed (Probability 80%)**



Significant wave height (m)

# MARINE WEATHER FORECAST- 20 NM WEST OF ELEPHANT POINT (Lat 21° 10' N, Long 091° 42' E)

**DATE : 30 June to 07 July 2024**

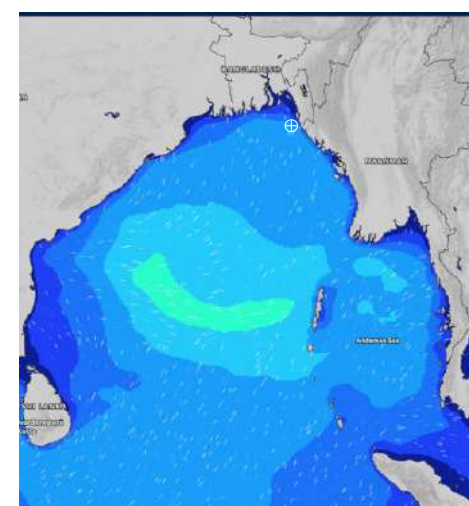
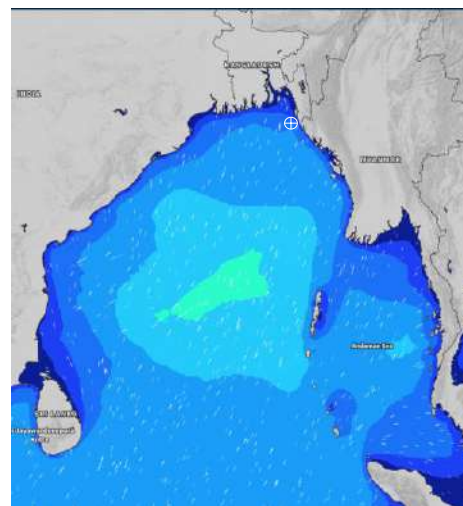
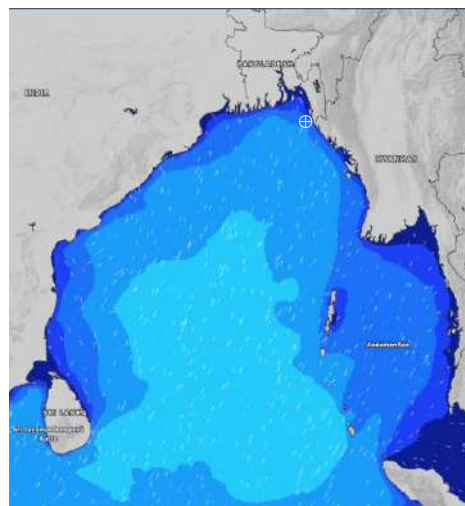
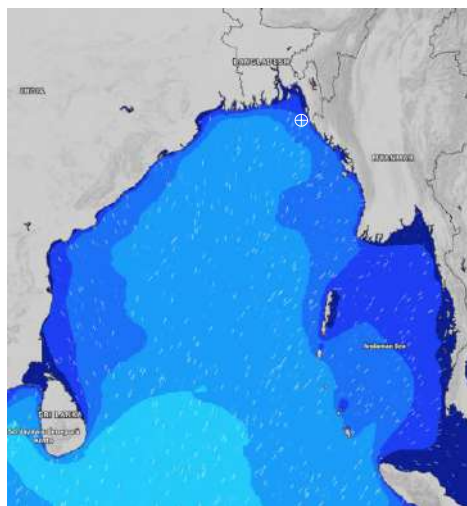
Date	Time	Max Wind Spd (kts)	Wind Direction	Wave Ht (m)	Sea State	Baro Pressure	Air Temp		Sea Surface Temp	Humidity (%)	Prob of Rain (%)	Sea State	Wave Ht (m)		
							Max	Min							
04-07-24	0001	16	S	1.5	4	1005	28	26	27	92%	80% (1.3 mm)	0	0		
	0600	15	SSE	1.4	4	1005			28	26	28	94%	90% (1.4 mm)	1	0 - 0.1
	1200	16	SSE	1.4	4	1006			28	26	28	96%	77% (0.6 mm)	2	0.1 - 0.5
	1800	15	S	1.4	4	1005			28	26	28	95%	56% (0.5 mm)	3	0.5 - 1.25
05-07-24	0001	18	S	2.0	4	1006	28	25	29	93%	56% (0.4 mm)	4	1.25 - 2.5		
	0600	18	S	2.0	4	1005			28	25	28	95%	36% (0.3 mm)	5	2.5 - 4.0
	1200	17	SSE	1.6	4	1005			28	25	28	97%	61% (0.6 mm)	6	4.0 - 6.0
	1800	19	SSE	1.6	4	1003			28	25	29	95%	53% (0.5 mm)	7	6.0 - 9.0
06-07-24	0001	16	SSE	1.5	4	1004	29	26	28	95%	61% (0.6 mm)	8	9.0 - 14.0		
	0600	17	SE	1.6	4	1003			29	26	27	96%	53% (0.5 mm)	9	Over 14.0
	1200	16	SSE	1.6	4	1003			29	26	28	94%	56% (0.4 mm)		
	1800	12	S	1.4	4	1001			29	26	29	94%	36% (0.3 mm)		
07-07-24	0001	18	SE	1.5	4	1002	30	26	28	90%	61% (0.6 mm)				
	0600	18	SE	1.6	4	1001			30	26	28	93%	53% (0.5 mm)		
	1200	26	SE	2.0	4	1002			30	26	28	90%	56% (0.4 mm)		
	1800	22	SSE	1.8	4	1000			30	26	29	91%	36% (0.3 mm)		

**04 July 24 Thu (Probability 70%)**

**05 July 24 Fri (Probability 60%)**

**06 July 24 Sat (Probability 50%)**

**07 July 24 Sun (Probability 50%)**



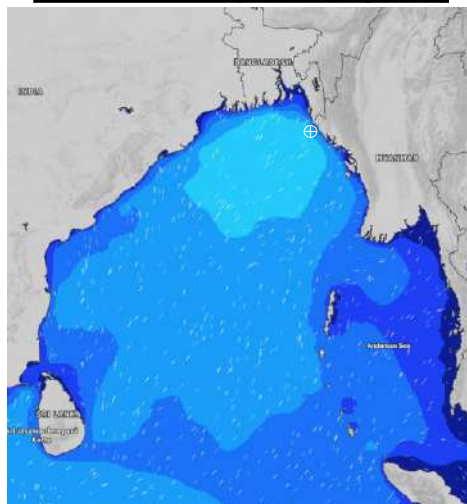
Significant wave height (m)

# MARINE WEATHER FORECAST- 15 NM WEST OF ST. MARTIN'S LIGHT HOUSE (Lat 20° 37'N, Long 092° 03'E)

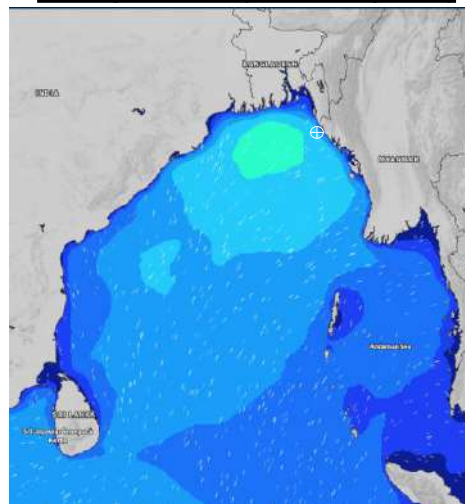
**DATE : 30 June to 07 July 2024**

Date	Time	Max Wind Spd (kts)	Wind Direction	Wave Ht (m)	Sea State	Baro Pressure	Air Temp		Sea Surface Temp	Humidity (%)	Prob of Rain(%)	Sea State	Wave Ht (m)
							Max	Min					
30-06-24	0001	26	SSW	2.5	4	1005	29	27	29	92%	94% (3.5 mm)	0	0
	0600	24	SSW	2.7	5	1004			29	92%	94% (5.1 mm)	1	0 - 0.1
	1200	25	SSW	2.6	5	1005			29	93%	98% (3.3 mm)	2	0.1 - 0.5
	1800	27	SW	2.7	5	1004			29	93%	90% (2.4 mm)	3	0.5 - 1.25
01-07-24	0001	25	SW	2.6	5	1006	28	26	29	91%	61% (0.6 mm)	4	1.25 - 2.5
	0600	24	SW	2.8	5	1003			29	91%	53% (0.5 mm)	5	2.5 - 4.0
	1200	27	SW	2.8	5	1005			29	95%	56% (0.4 mm)	6	4.0 - 6.0
	1800	24	WSW	2.9	5	1002			29	94%	92% (2.4 mm)	7	6.0 - 9.0
02-07-24	0001	22	SW	2.7	5	1004	28	26	29	91%	90% (2.1 mm)	8	9.0 - 14.0
	0600	19	SW	2.5	4	1001			27	92%	83% (1.3 mm)	9	Over 14.0
	1200	15	SW	2.3	4	1003			28	95%	97% (1.4 mm)		
	1800	18	SSW	2.2	4	1001			27	93%	61% (0.6 mm)		
03-07-24	0001	14	SW	2.0	4	1003	28	26	27	92%	90% (2.1 mm)		
	0600	18	SW	2.0	4	1002			27	93%	83% (1.3 mm)		
	1200	17	SW	2.0	4	1004			27	95%	97% (1.4 mm)		
	1800	17	SSW	2.0	4	1003			27	92%	61% (0.6 mm)		

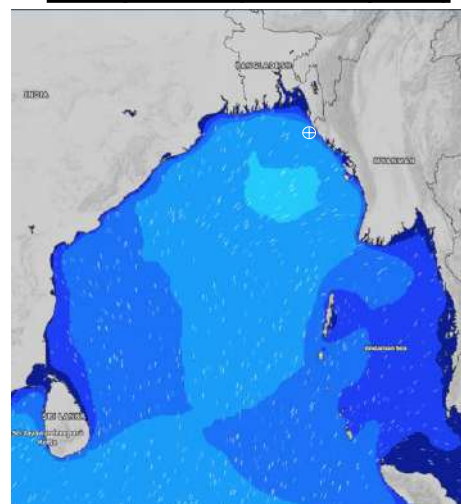
**30 June 24 Sun (Probability 98%)**



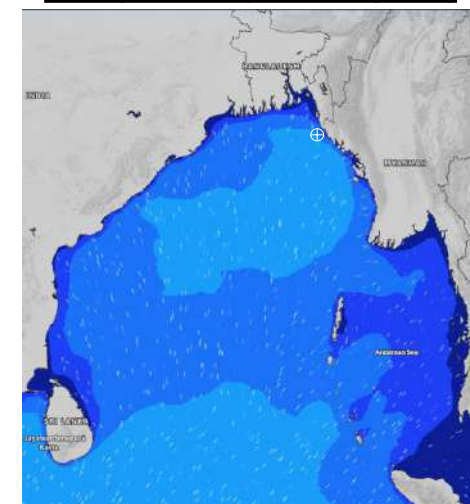
**01 July 24 Mon (Probability 95%)**



**02 July 24 Tue (Probability 90%)**



**03 July 24 Wed (Probability 80%)**



Significant wave height (m)

# MARINE WEATHER FORECAST- 15 NM WEST OF ST. MARTIN'S LIGHT HOUSE (Lat 20° 37'N, Long 092° 03'E)

**DATE : 30 June to 07 July 2024**

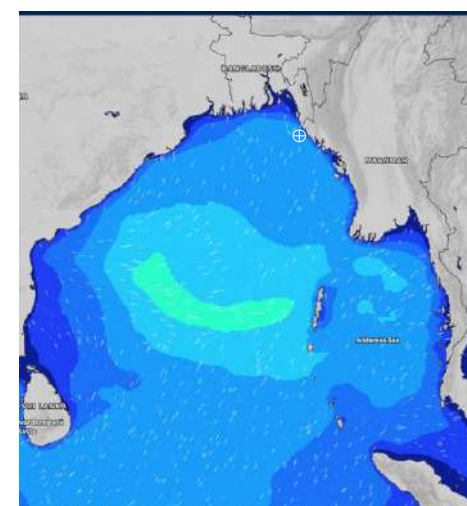
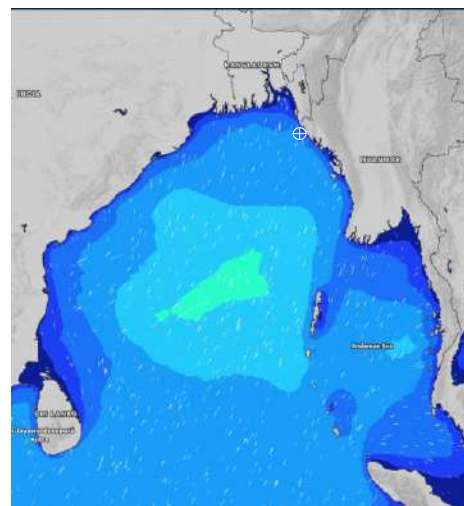
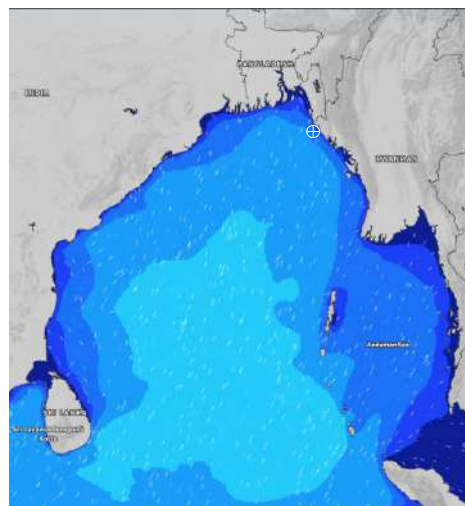
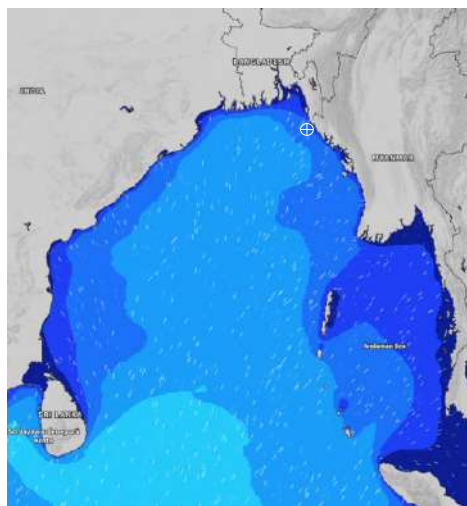
Date	Time	Max Wind Spd (kts)	Wind Direction	Wave Ht (m)	Sea State	Baro Pressure	Air Temp		Sea Surface Temp	Humidity (%)	Prob of Rain (%)	Sea State	Wave Ht (m)
							Max	Min					
04-07-24	0001	15	S	1.8	4	1006	28	26	28	91%	78% (1.4 mm)	0	0
	0600	13	S	1.7	4	1005			28	92%	81% (1.5 mm)	1	0 - 0.1
	1200	14	S	1.6	4	1007			28	93%	69% (1.1 mm)	2	0.1 - 0.5
	1800	15	SSW	1.7	4	1005			29	92%	70% (1.4 mm)	3	0.5 - 1.25
05-07-24	0001	15	S	1.7	4	1007	28	26	29	91%	81% (1.5 mm)	4	1.25 - 2.5
	0600	18	S	1.8	4	1005			29	91%	75% (1.1 mm)	5	2.5 - 4.0
	1200	15	S	1.8	4	1006			28	95%	66% (1.3 mm)	6	4.0 - 6.0
	1800	16	SSE	1.9	4	1003			28	94%	69% (1.4 mm)	7	6.0 - 9.0
06-07-24	0001	16	S	2.0	4	1005	28	26	28	94%	70% (0.8 mm)	8	9.0 - 14.0
	0600	16	S	1.9	4	1002			28	94%	71% (0.7 mm)	9	Over 14.0
	1200	11	SSE	1.9	4	1004			28	95%	45% (0.4 mm)		
	1800	10	S	1.8	4	1001			28	95%	32% (0.2 mm)		
07-07-24	0001	11	SE	1.8	4	1003	29	26	28	94%	69% (0.8 mm)		
	0600	17	ESE	2.0	4	1000			27	94%	71% (0.7 mm)		
	1200	31	ESE	2.5	4	1002			28	95%	45% (0.4 mm)		
	1800	20	SSE	2.1	4	1000			28	95%	32% (0.2 mm)		

**04 July 24 Thu (Probability 70%)**

**05 July 24 Fri (Probability 60%)**

**06 July 24 Sat (Probability 50%)**

**07 July 24 Sun (Probability 50%)**



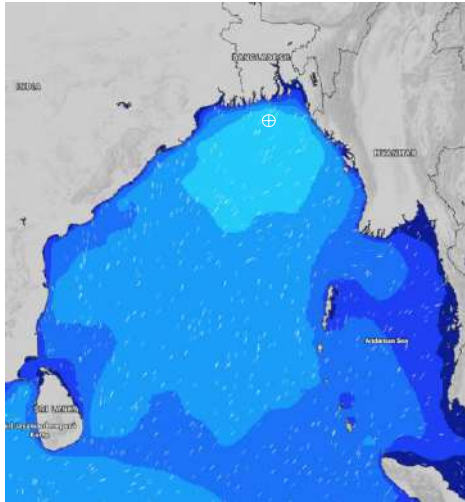
Significant wave height (m)

# MARINE WEATHER FORECAST- 40 NM ESE OF PAYRA FAIRWAY (Lat 21° 07' N, Long 090° 45' E)

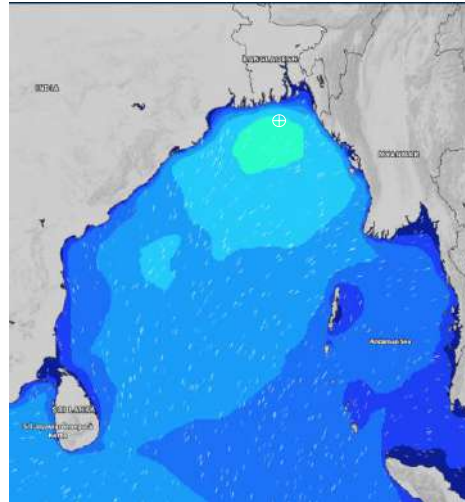
**DATE : 30 June to 07 July 2024**

Date	Time	Max Wind Spd (kts)	Wind Direction	Wave Ht (m)	Sea State	Baro Pressure	Air Temp		Sea Surface Temp	Humidity (%)	Prob of Rain (%)	Sea State	Wave Ht (m)
							Max	Min					
30-06-24	0001	27	SSW	2.8	5	1003	29	27	29	91%	34% (0.2 mm)	0	0
	0600	24	SSW	2.8	5	1002			29	91%	40% (0.4 mm)	1	0 - 0.1
	1200	28	SW	2.9	5	1003			29	92%	98% (4.7 mm)	2	0.1 - 0.5
	1800	25	SW	2.9	5	1002			29	91%	49% (0.4 mm)	3	0.5 - 1.25
01-07-24	0001	28	SSW	2.8	5	1003	29	27	29	89%	69% (1.3 mm)	4	1.25 - 2.5
	0600	27	SW	3.0	5	1002			29	91%	84% (1.4 mm)	5	2.5 - 4.0
	1200	29	WSW	3.1	5	1003			29	93%	90% (1.6 mm)	6	4.0 - 6.0
	1800	27	WSW	3.0	5	1001			29	91%	54% (0.4 mm)	7	6.0 - 9.0
02-07-24	0001	25	SW	2.7	5	1002	28	27	29	90%	83% (1.3 mm)	8	9.0 - 14.0
	0600	21	WSW	2.5	4	1001			29	94%	97% (1.4 mm)	9	Over 14.0
	1200	19	WSW	2.3	4	1001			29	93%	61% (0.6 mm)		
	1800	15	WSW	2.1	4	1000			28	90%	53% (0.4 mm)		
03-07-24	0001	14	SW	2.0	4	1001	28	27	28	91%	83% (1.3 mm)		
	0600	16	SW	1.9	4	1001			27	93%	97% (1.4 mm)		
	1200	17	SW	1.9	4	1003			27	94%	61% (0.6 mm)		
	1800	17	SW	2.0	4	1003			27	92%	53% (0.4 mm)		

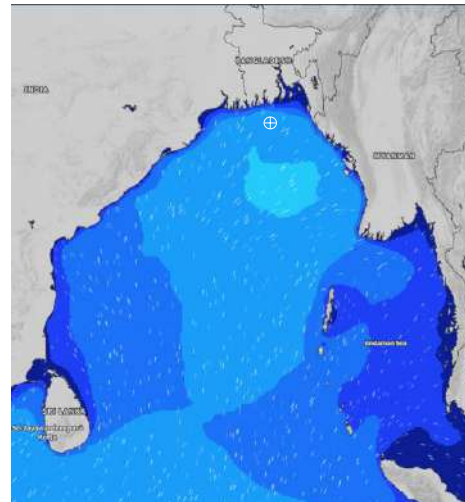
**30 June 24 Sun (Probability 98%)**



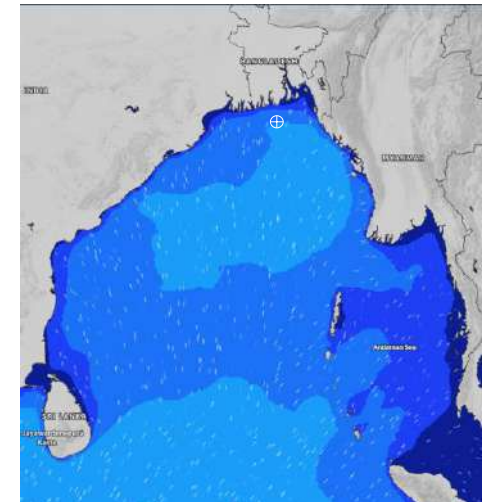
**01 July 24 Mon (Probability 95%)**



**02 July 24 Tue (Probability 90%)**



**03 July 24 Wed (Probability 80%)**



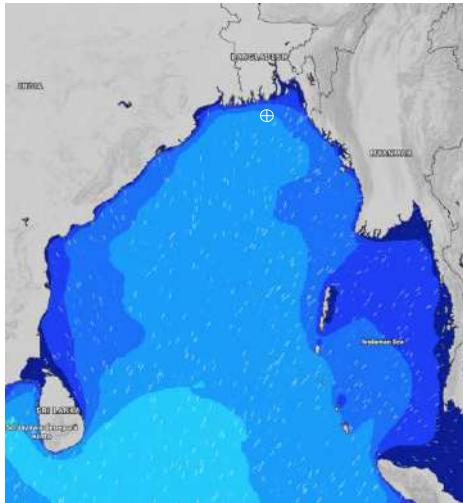
Significant wave height (m)

# MARINE WEATHER FORECAST- 40 NM ESE OF PAYRA FAIRWAY (Lat 21° 07' N, Long 090° 45' E)

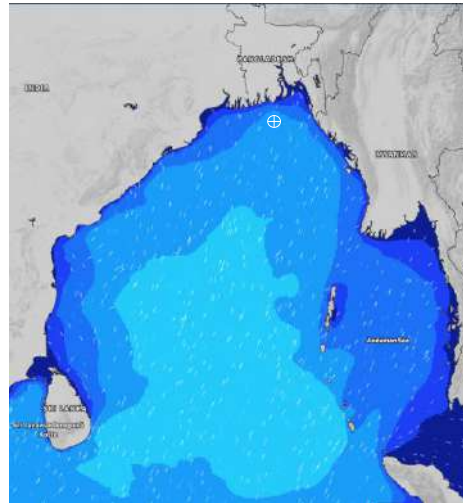
**DATE : 30 June to 07 July 2024**

Date	Time	Max Wind Spd (kts)	Wind Direction	Wave Ht (m)	Sea Stae	Baro Pressure	Air Temp		Sea Surface Temp	Humidity (%)	Prob of Rain (%)	Sea State	Wave Ht (m)
							Max	Min					
04-07-24	0001	15	SSW	1.7	4	1004	29	27	28	91%	83% (1.3 mm)	0	0
	0600	14	SSW	1.6	4	1004			28	92%	97% (1.4 mm)	1	0 - 0.1
	1200	17	SSW	1.8	4	1005			28	93%	61% (0.6 mm)	2	0.1 - 0.5
	1800	19	SSW	2.0	4	1005			29	90%	90% (2.1 mm)	3	0.5 - 1.25
05-07-24	0001	21	S	2.0	4	1005	29	27	29	90%	97% (2.4 mm)	4	1.25 - 2.5
	0600	18	S	2.0	4	1004			29	92%	95% (3.5 mm)	5	2.5 - 4.0
	1200	17	S	2.0	4	1004			29	91%	43% (0.4 mm)	6	4.0 - 6.0
	1800	13	SSW	2.0	4	1002			29	90%	24% (0.1 mm)	7	6.0 - 9.0
06-07-24	0001	14	S	1.9	4	1003	29	27	29	90%	61% (0.6 mm)	8	9.0 - 14.0
	0600	11	SSW	1.9	4	1002			29	92%	44% (0.4 mm)	9	Over 14.0
	1200	12	SSW	1.8	4	1002			29	91%	43% (0.4 mm)		
	1800	9	S	1.8	4	1001			29	90%	24% (0.1 mm)		
07-07-24	0001	11	SSE	1.8	4	1001	30	27	29	88%	61% (0.6 mm)		
	0600	16	SE	2.0	4	1000			28	92%	44% (0.4 mm)		
	1200	17	ESE	2.1	4	1001			29	91%	43% (0.4 mm)		
	1800	16	SSE	2.1	4	1000			29	90%	24% (0.1 mm)		

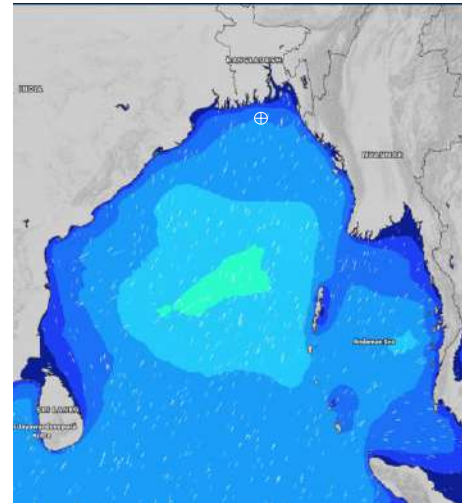
**04 July 24 Thu (Probability 70%)**



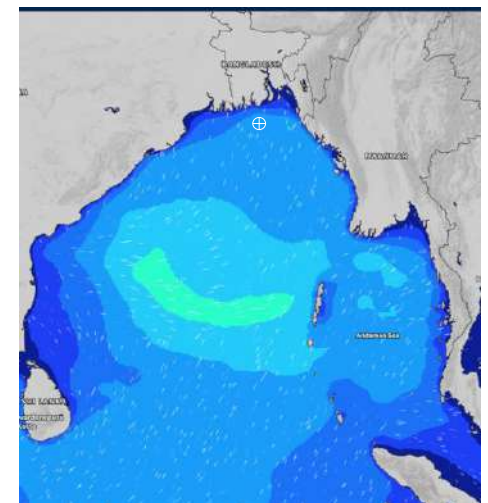
**05 July 24 Fri (Probability 60%)**



**06 July 24 Sat (Probability 50%)**



**07 July 24 Sun (Probability 50%)**



Significant wave height (m)

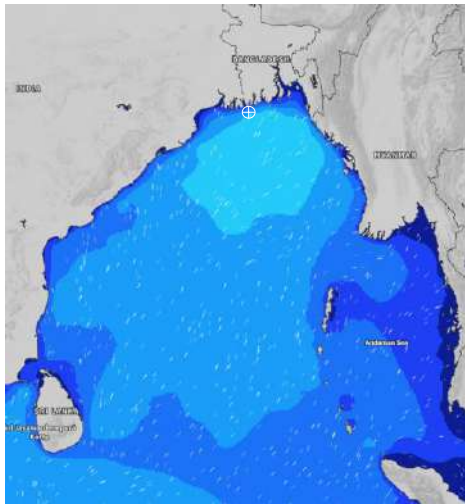


# MARINE WEATHER FORECAST- 10 NM SOUTH OF MONGLA FAIRWAY (Lat 21° 16' N, Long 089° 34' E)

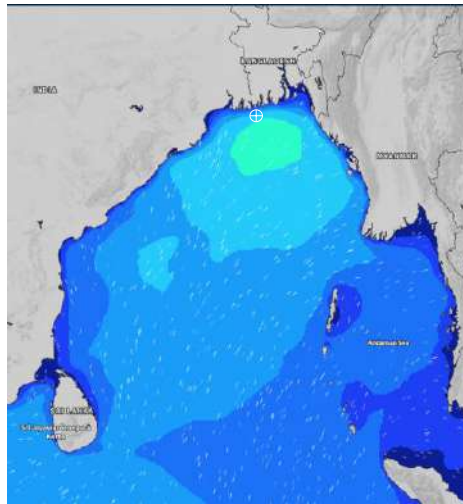
**DATE : 30 June to 07 July 2024**

Date	Time	Max Wind Spd (kts)	Wind Direction	Wave Ht (m)	Sea State	Baro Pressure	Air Temp		Sea Surface Temp	Humidity (%)	Prob of Rain (%)	Sea State	Wave Ht (m)
							Max	Min					
30-06-24	0001	25	SSW	2.6	5	1001	29	27	29	94%	24% (0.1 mm)	0	0
	0600	23	SSW	2.6	5	1001			29	95%	24% (0.1 mm)	1	0 - 0.1
	1200	24	SW	2.6	5	1002			29	94%	45% (0.4 mm)	2	0.1 - 0.5
	1800	23	SW	2.6	5	1001			29	93%	40% (0.3 mm)	3	0.5 - 1.25
01-07-24	0001	27	SW	2.7	5	1002	29	27	29	90%	44% (0.4 mm)	4	1.25 - 2.5
	0600	27	WSW	3.0	5	1001			29	94%	72% (0.7 mm)	5	2.5 - 4.0
	1200	26	WSW	3.0	5	1002			29	89%	74% (0.7 mm)	6	4.0 - 6.0
	1800	24	WSW	2.9	5	1001			29	93%	44% (0.3 mm)	7	6.0 - 9.0
02-07-24	0001	23	WSW	2.6	5	1001	29	26	29	93%	83% (2.3 mm)	8	9.0 - 14.0
	0600	22	W	2.4	4	1000			29	94%	97% (2.4 mm)	9	Over 14.0
	1200	18	W	2.2	4	1001			29	93%	95% (2.5 mm)		
	1800	12	WSW	2.0	4	999			29	94%	90% (2.1 mm)		
03-07-24	0001	17	SW	1.9	4	1000	29	26	29	94%	83% (2.3 mm)		
	0600	15	WSW	1.9	4	1001			29	95%	97% (2.4 mm)		
	1200	15	SSW	1.7	4	1002			28	94%	95% (2.5 mm)		
	1800	16	SW	1.7	4	1002			28	96%	90% (2.1 mm)		

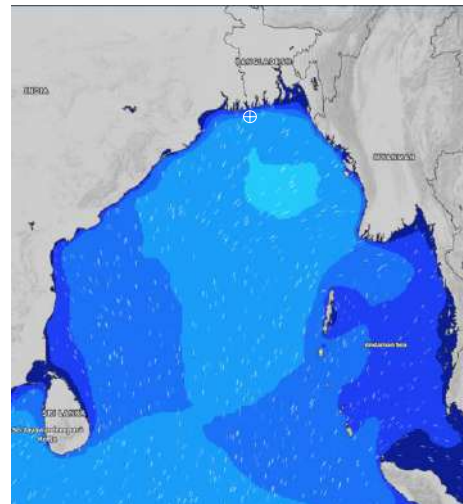
**30 June 24 Sun (Probability 98%)**



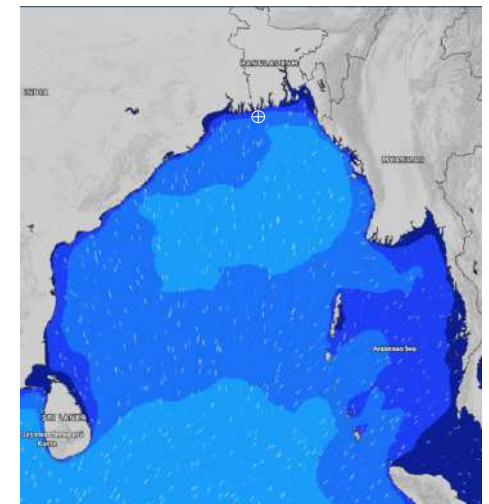
**01 July 24 Mon (Probability 95%)**



**02 July 24 Tue (Probability 90%)**



**03 July 24 Wed (Probability 80%)**



Significant wave height (m)

# MARINE WEATHER FORECAST- 10 NM SOUTH OF MONGLA FAIRWAY (Lat 21° 16' N, Long 089° 34' E)

**DATE : 30 June to 07 July 2024**

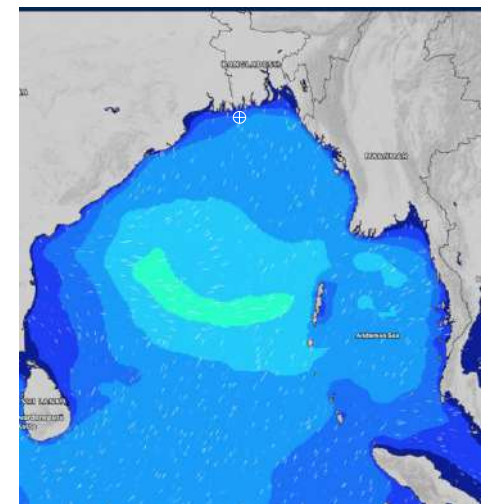
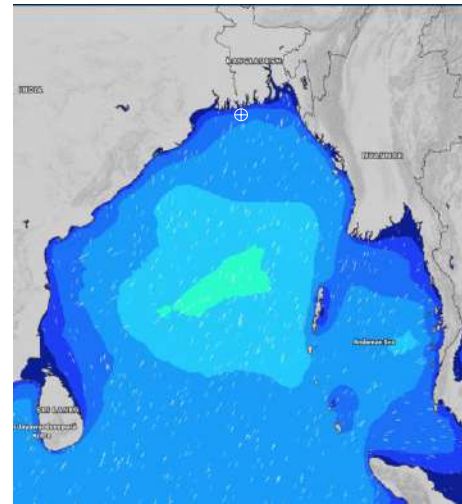
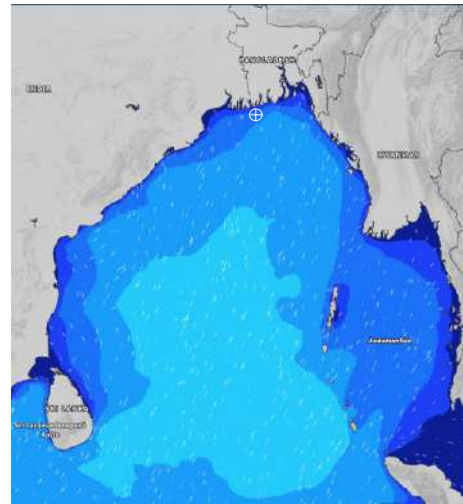
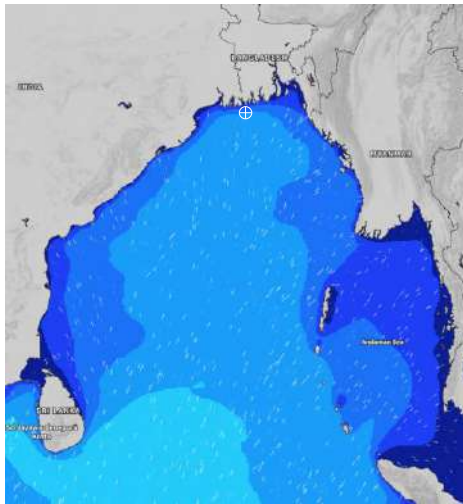
Date	Time	Max Wind Spd (kts)	Wind Direction	Wave Ht (m)	Sea State	Baro Pressure	Air Temp		Sea Surface Temp	Humidity (%)	Prob of Rain (%)	Sea State	Wave Ht (m)		
							Max	Min							
04-07-24	0001	17	SSW	1.6	4	1003	29	27	28	90%	68% (0.7 mm)	0	0		
	0600	15	SSW	1.7	4	1003			29	27	29	92%	61% (0.6 mm)	1	0 - 0.1
	1200	17	SW	2.0	4	1004			29	27	29	93%	61% (0.5 mm)	2	0.1 - 0.5
	1800	19	SSW	2.1	4	1003			29	27	28	92%	70% (0.7 mm)	3	0.5 - 1.25
05-07-24	0001	21	SSW	2.0	4	1004	29	27	29	93%	77% (1.1 mm)	4	1.25 - 2.5		
	0600	16	SSW	1.8	4	1003			29	27	29	94%	68% (0.5 mm)	5	2.5 - 4.0
	1200	13	S	1.8	4	1003			29	27	29	93%	61% (0.4 mm)	6	4.0 - 6.0
	1800	11	SSW	1.7	4	1001			29	27	29	94%	61% (0.5 mm)	7	6.0 - 9.0
06-07-24	0001	15	SSW	1.7	4	1002	29	27	29	94%	71% (0.6 mm)	8	9.0 - 14.0		
	0600	12	SW	1.7	4	1001			29	27	29	95%	44% (0.4 mm)	9	Over 14.0
	1200	12	SSW	1.7	4	1002			29	27	29	90%	63% (0.5 mm)		
	1800	10	SSW	1.7	4	1000			29	27	29	94%	61% (0.7 mm)		
07-07-24	0001	12	SSE	1.7	4	1001	31	27	29	90%	61% (0.6 mm)				
	0600	12	SSE	1.8	4	1000			31	27	29	92%	44% (0.4 mm)		
	1200	13	SE	1.8	4	1001			31	27	28	88%	63% (0.5 mm)		
	1800	8	SE	1.8	4	999			31	27	29	88%	61% (0.7 mm)		

**04 July 24 Thu (Probability 70%)**

**05 July 24 Fri (Probability 60%)**

**06 July 24 Sat (Probability 50%)**

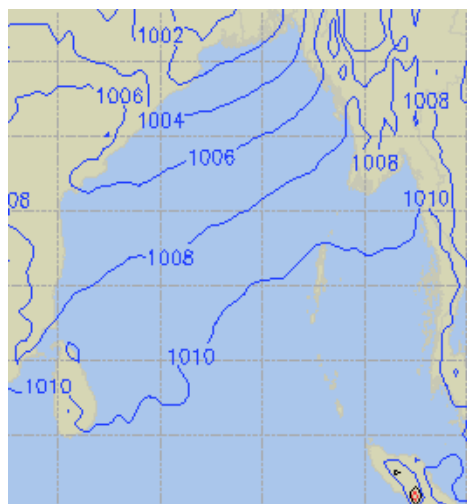
**07 July 24 Sun (Probability 50%)**



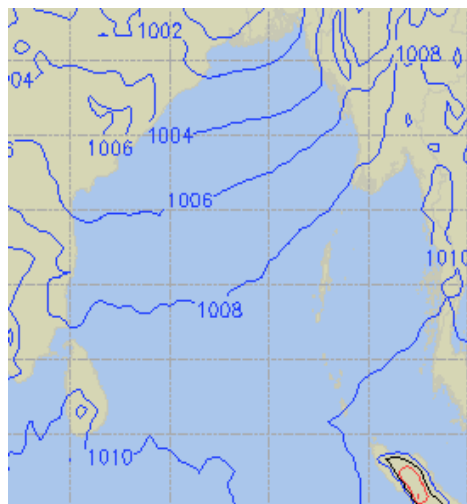
Significant wave height (m)

## PREDICTED SURFACE PRESSURE FORECAST (30 June to 06 July 2024)

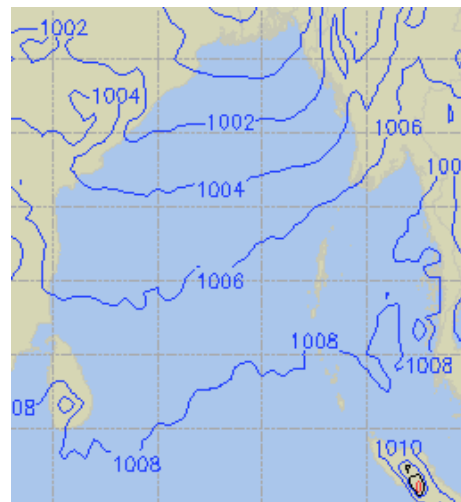
**30 June 24 Sun (Probability 98%)**



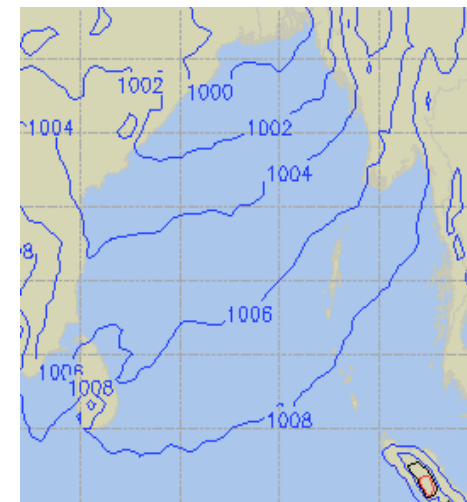
**01 July 24 Mon (Probability 95%)**



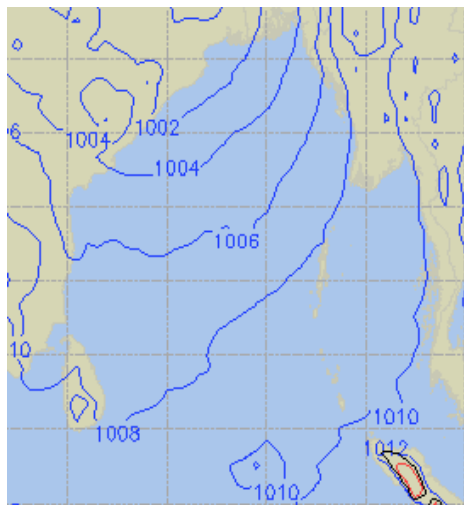
**02 July 24 Tue (Probability 90%)**



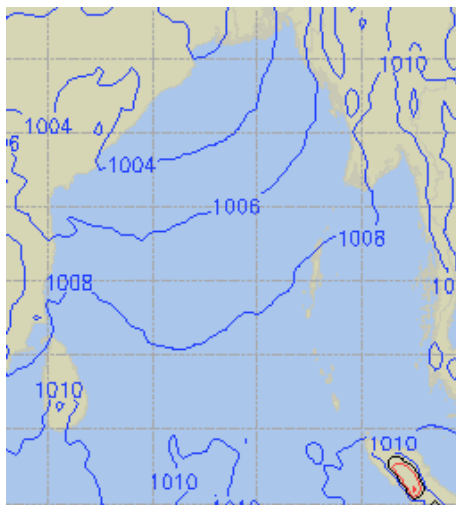
**03 July 24 Wed (Probability 80%)**



**04 July 24 Thu (Probability 70%)**



**05 July 24 Fri (Probability 60%)**



**06 July 24 Sat (Probability 50%)**

