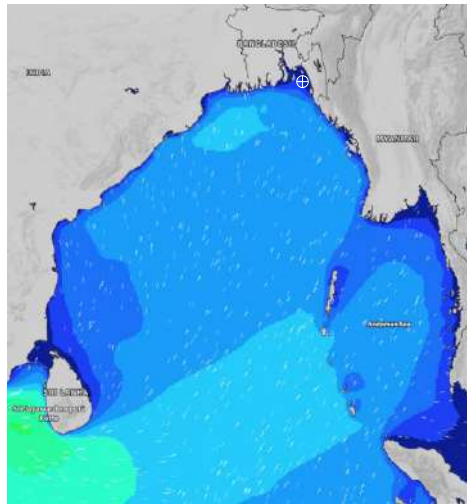


MARINE WEATHER FORECAST- NEAR AUTHORITY BUOY (Lat 22° 12' N, Long 091° 38' E)

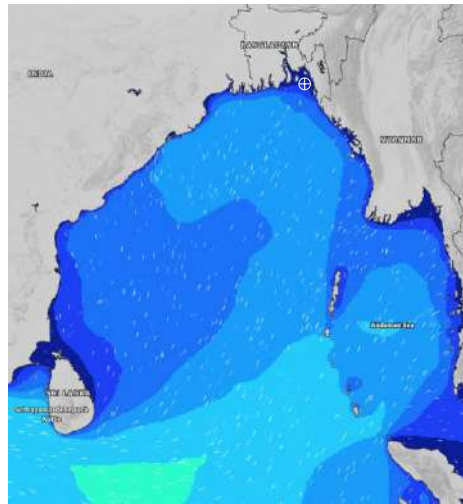
DATE : 30 May to 06 June 2024

Date	Time	Max Wind Spd (kts)	Wind Direction	Wave Ht (m)	Sea State	Baro Pressure	Air Temp		Sea Surface Temp	Humidity (%)	Prob of Rain (%)	Sea State	Wave Ht (m)
							Max	Min					
30-05-24	0001	24	SSE	0.4	2	1003	32	28	30	89%	32% (0.0 mm)	0	0
	0600	20	SSE	0.4	2	1004			29	91%	32% (0.0 mm)	1	0 - 0.1
	1200	18	S	0.3	2	1005			30	87%	24% (0.0 mm)	2	0.1 - 0.5
	1800	17	S	0.3	2	1003			30	85%	20% (0.0 mm)	3	0.5 - 1.25
31-05-24	0001	19	SSE	0.3	2	1004	32	28	30	91%	23% (0.0 mm)	4	1.25 - 2.5
	0600	16	SE	0.3	2	1004			29	88%	24% (0.0 mm)	5	2.5 - 4.0
	1200	17	S	0.3	2	1005			30	82%	32% (0.2 mm)	6	4.0 - 6.0
	1800	16	SSW	0.2	2	1003			30	87%	28% (0.0 mm)	7	6.0 - 9.0
01-06-24	0001	13	S	0.3	2	1005	32	28	30	89%	23% (0.0 mm)	8	9.0 - 14.0
	0600	16	SSE	0.3	2	1004			29	91%	20% (0.0 mm)	9	Over 14.0
	1200	14	SSW	0.2	2	1006			30	86%	14% (0.0 mm)		
	1800	13	SSW	0.3	2	1004			30	88%	15% (0.0 mm)		
02-06-24	0001	14	S	0.3	2	1006	32	28	30	92%	19% (0.0 mm)		
	0600	16	SE	0.3	2	1006			29	94%	20% (0.0 mm)		
	1200	15	SSE	0.3	2	1007			30	83%	24% (0.0 mm)		
	1800	14	SSE	0.3	2	1004			30	87%	18% (0.0 mm)		

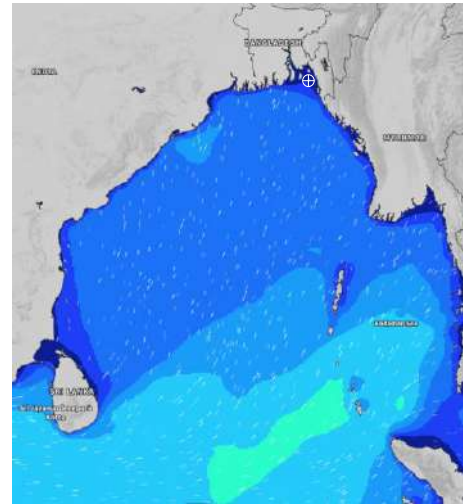
30 May 24 Thu (Probability 98%)



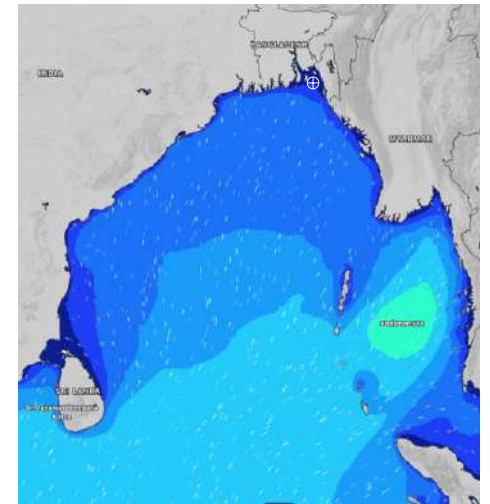
31 May 24 Fri (Probability 95%)



01 June 24 Sat (Probability 90%)



02 June 24 Sun (Probability 80%)



Significant wave height (m)

MARINE WEATHER FORECAST- NEAR AUTHORITY BUOY (Lat 22° 12' N, Long 091° 38' E)

DATE : 30 May to 06 June 2024

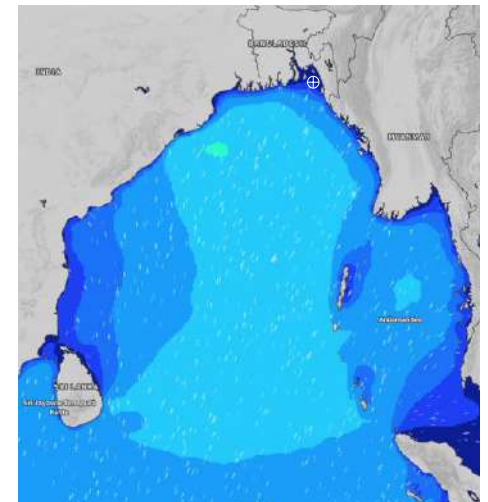
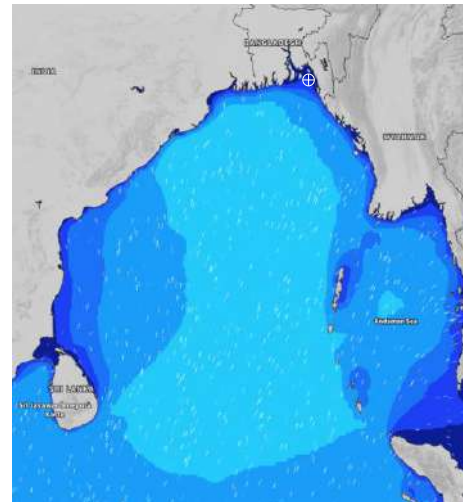
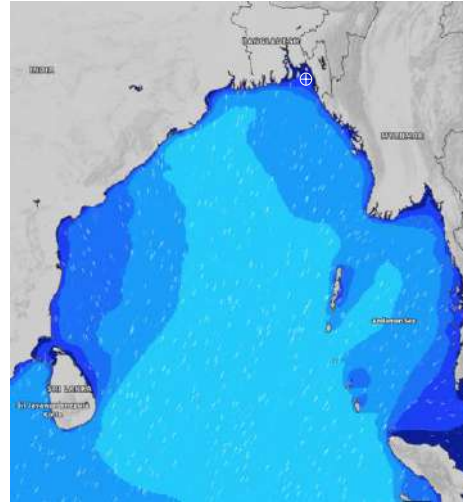
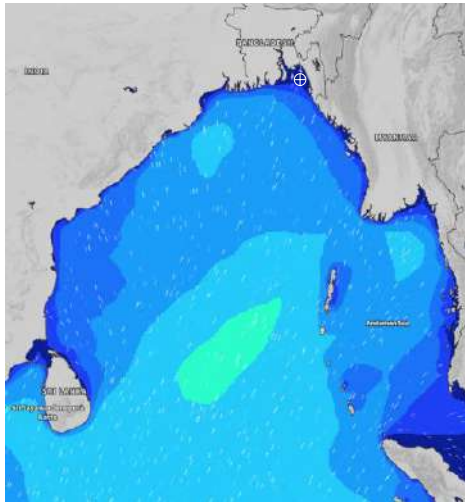
Date	Time	Max Wind Spd (kts)	Wind Direction	Wave Ht (m)	Sea State	Baro Pressure	Air Temp		Sea Surface Temp	Humidity (%)	Prob of Rain (%)	Sea State	Wave Ht (m)
							Max	Min					
03-06-24	0001	17	S	0.4	2	1005	32	27	29	88%	38% (0.2 mm)	0	0
	0600	12	SSE	0.2	2	1005			29	93%	44% (0.4 mm)	1	0 - 0.1
	1200	13	SSW	0.3	2	1006			29	84%	33% (0.2 mm)	2	0.1 - 0.5
	1800	28	SSW	0.4	2	1003			29	82%	36% (0.2 mm)	3	0.5 - 1.25
04-06-24	0001	18	SSE	0.4	2	1005	32	27	29	89%	35% (0.3 mm)	4	1.25 - 2.5
	0600	18	SSE	0.4	2	1004			29	94%	44% (0.4 mm)	5	2.5 - 4.0
	1200	19	S	0.4	2	1005			230	85%	32% (0.3 mm)	6	4.0 - 6.0
	1800	20	S	0.4	2	1002			29	88%	43% (0.4 mm)	7	6.0 - 9.0
05-06-24	0001	19	SSE	0.4	2	1004	32	27	29	89%	35% (0.4 mm)	8	9.0 - 14.0
	0600	18	SSE	0.3	2	1004			29	94%	36% (0.4 mm)	9	Over 14.0
	1200	17	S	0.4	2	1005			30	78%	25% (0.2 mm)		
	1800	15	S	0.3	2	1001			29	81%	24% (0.2 mm)		
06-06-24	0001	17	SSE	0.3	2	1003	32	27	29	88%	35% (0.4 mm)		
	0600	20	SE	0.3	2	1003			29	95%	36% (0.4 mm)		
	1200	17	SSE	0.3	2	1004			30	79%	25% (0.2 mm)		
	1800	19	SSE	0.3	2	1002			29	84%	24% (0.2 mm)		

03 June 24 Mon (Probability 70%)

04 June 24 Tue (Probability 60%)

05 June 24 Wed (Probability 50%)

06 June 24 Thu (Probability 50%)



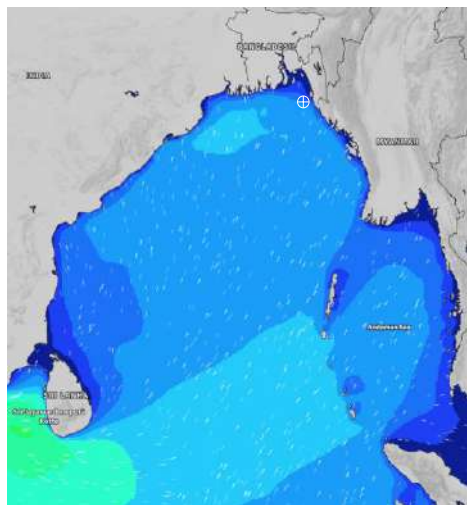
Significant wave height (m)

MARINE WEATHER FORECAST- 20 NM WEST OF ELEPHANT POINT (Lat 21° 10' N, Long 091° 42' E)

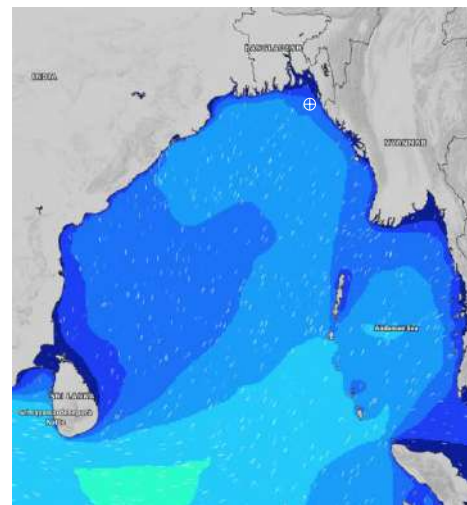
DATE : 30 May to 06 June 2024

Date	Time	Max Wind Spd (kts)	Wind Direction	Wave Ht (m)	Sea State	Baro Pressure	Air Temp		Sea Surface Temp	Humidity (%)	Prob of Rain (%)	Sea State	Wave Ht (m)
							Max	Min					
30-05-24	0001	19	SSE	1.9	4	1003	32	27	30	90%	32% (0.2 mm)	0	0
	0600	16	S	1.8	4	1004			30	95%	41% (0.4 mm)	1	0 - 0.1
	1200	15	S	1.7	4	1005			31	83%	44% (0.4 mm)	2	0.1 - 0.5
	1800	15	SSE	1.7	4	1002.3			31	89%	49% (0.5 mm)	3	0.5 - 1.25
31-05-24	0001	15	SE	1.6	4	1004	32	27	30	91%	51% (0.5 mm)	4	1.25 - 2.5
	0600	16	SE	1.5	4	1004			31	94%	46% (0.5 mm)	5	2.5 - 4.0
	1200	13	SSE	1.4	4	1005			3	83%	43% (0.4 mm)	6	4.0 - 6.0
	1800	12	SSW	1.4	4	1003			30	88%	45% (0.4 mm)	7	6.0 - 9.0
01-06-24	0001	13	SSW	1.3	4	1005	32	27	30	89%	41% (0.4 mm)	8	9.0 - 14.0
	0600	11	SSE	1.3	4	1005			30	92%	43% (0.4 mm)	9	Over 14.0
	1200	12	SSW	1.3	4	1006			30	82%	51% (0.5 mm)		
	1800	11	SSW	1.2	3	1004			30	87%	46% (0.4 mm)		
02-06-24	0001	10	S	1.1	3	1006	32	27	30	88%	54% (0.5 mm)		
	0600	13	SSE	1.1	3	1005			30	93%	48% (0.5 mm)		
	1200	15	SSE	1.2	3	1006			30	83%	42% (0.4 mm)		
	1800	14	SE	1.1	3	1004			30	89%	46% (0.4 mm)		

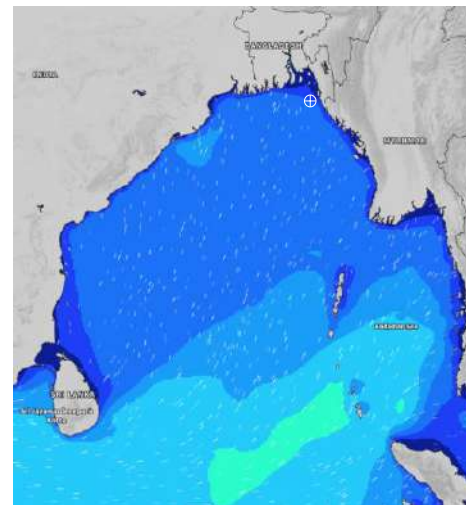
30 May 24 Thu (Probability 98%)



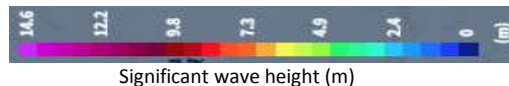
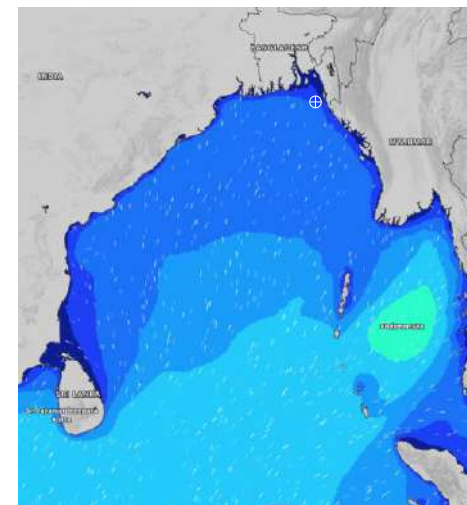
31 May 24 Fri (Probability 95%)



01 June 24 Sat (Probability 90%)



02 June 24 Sun (Probability 80%)



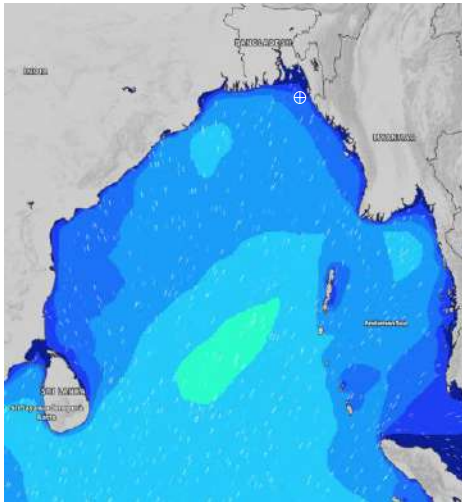
Significant wave height (m)

MARINE WEATHER FORECAST- 20 NM WEST OF ELEPHANT POINT (Lat 21° 10' N, Long 091° 42' E)

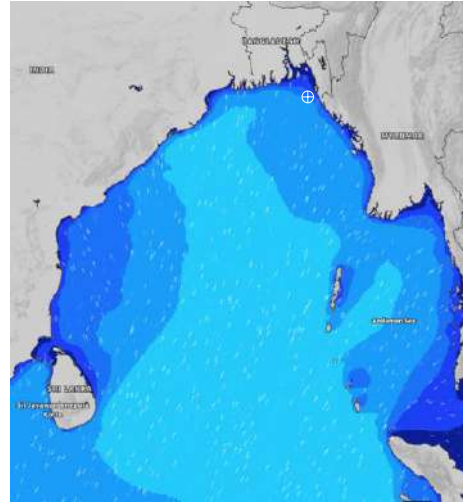
DATE : 30 May to 06 June 2024

Date	Time	Max Wind Spd (kts)	Wind Direction	Wave Ht (m)	Sea State	Baro Pressure	Air Temp		Sea Surface Temp	Humidity (%)	Prob of Rain (%)	Sea State	Wave Ht (m)
							Max	Min					
03-06-24	0001	15	SSW	1.2	3	1005	32	27	30	89%	30% (0.2 mm)	0	0
	0600	12	SSW	1.2	3	1005			29	91%	15% (0.0 mm)	1	0 - 0.1
	1200	11	S	1.3	4	1006			30	83%	16% (0.0 mm)	2	0.1 - 0.5
	1800	16	SSW	1.5	4	1004			30	85%	15% (0.0 mm)	3	0.5 - 1.25
04-06-24	0001	17	S	1.7	4	1004	32	28	30	88%	26% (0.1 mm)	4	1.25 - 2.5
	0600	15	SSW	1.7	4	1005			29	96%	25% (0.1 mm)	5	2.5 - 4.0
	1200	17	S	1.7	4	1003			30	85%	30% (0.2 mm)	6	4.0 - 6.0
	1800	17	S	1.7	4	1004			30	87%	31% (0.2 mm)	7	6.0 - 9.0
05-06-24	0001	14	S	1.6	4	1003	32	28	29	90%	18% (0.0 mm)	8	9.0 - 14.0
	0600	12	SSE	1.6	4	1004			29	95%	20% (0.0 mm)	9	Over 14.0
	1200	15	SSE	1.7	4	1002			30	79%	24% (0.0 mm)		
	1800	12	SSW	1.7	4	1003			29	88%	26% (0.1 mm)		
06-06-24	0001	11	S	1.7	4	1003	32	28	29	90%	32% (0.2 mm)		
	0600	14	S	1.7	4	1003			29	94%	25% (0.1 mm)		
	1200	13	S	1.6	4	1005			30	76%	38% (0.3 mm)		
	1800	15	SE	1.7	4	1002			29	88%	31% (0.3 mm)		

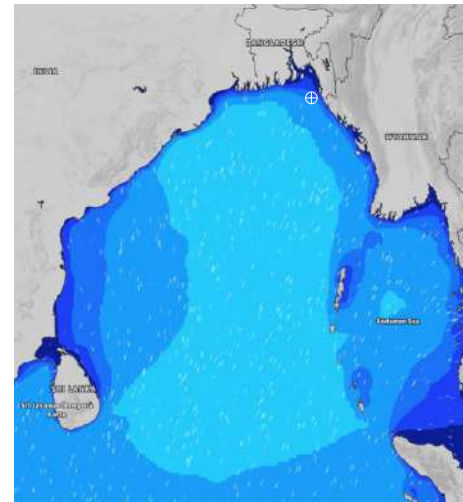
03 June 24 Mon (Probability 70%)



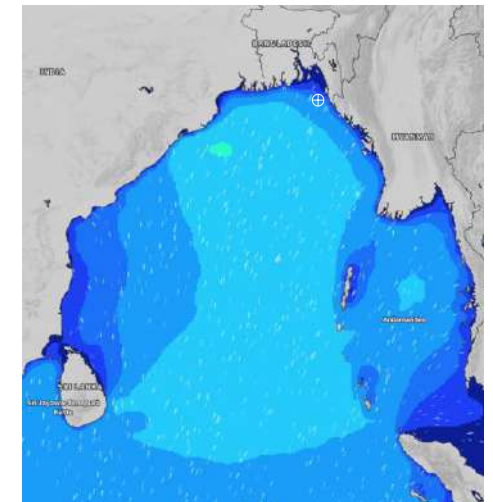
04 June 24 Tue (Probability 60%)



05 June 24 Wed (Probability 50%)



06 June 24 Thu (Probability 50%)



Significant wave height (m)

MARINE WEATHER FORECAST- 15 NM WEST OF ST. MARTIN'S LIGHT HOUSE (Lat 20° 37'N, Long 092° 03'E)

DATE : 30 May to 06 June 2024

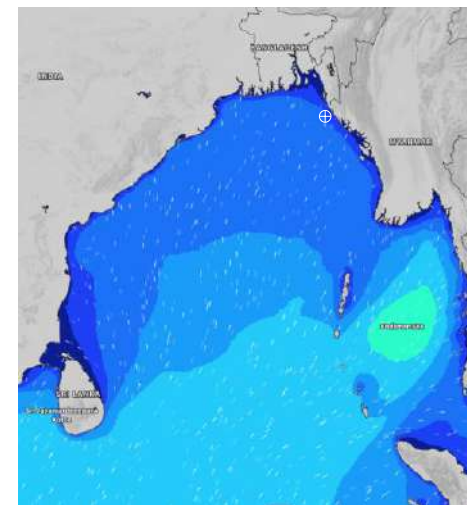
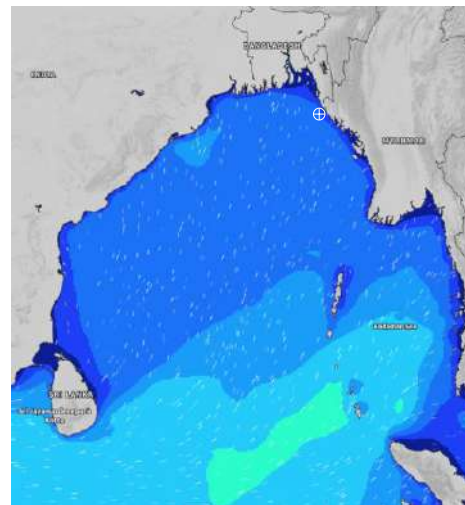
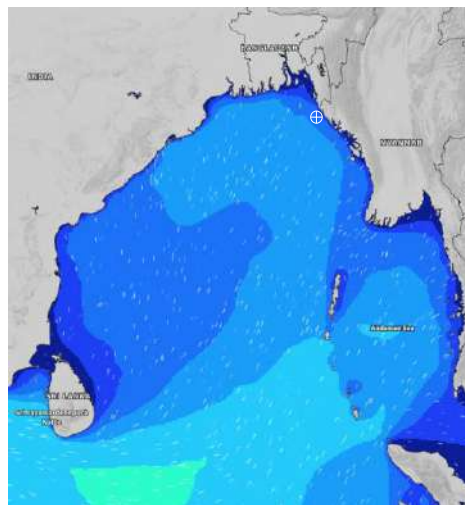
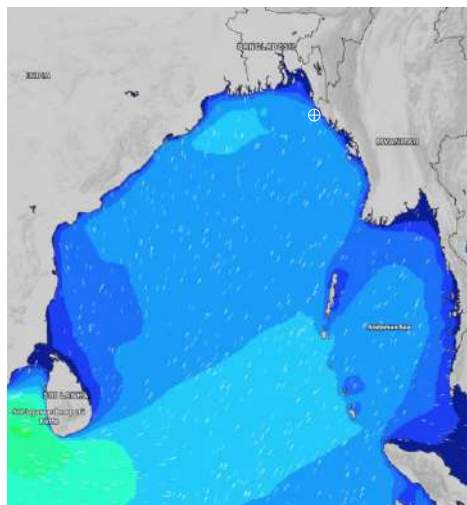
Date	Time	Max Wind Spd (kts)	Wind Direction	Wave Ht (m)	Sea State	Baro Pressure	Air Temp		Sea Surface Temp	Humidity (%)	Prob of Rain(%)	Sea State	Wave Ht (m)
							Max	Min					
30-05-24	0001	14	S	2.4	4	1005	32	27	31	89%	30% (0.2 mm)	0	0
	0600	14	S	2.3	4	1003			30	90%	25% (0.1 mm)	1	0 - 0.1
	1200	12	SSW	2.2	4	1006			31	83%	32% (0.1 mm)	2	0.1 - 0.5
	1800	9	SSW	2.0	4	1003			31	88%	20% (0.0 mm)	3	0.5 - 1.25
31-05-24	0001	10	SSE	2.0	4	1005	32	27	30	90%	24% (0.0 mm)	4	1.25 - 2.5
	0600	10	SSE	1.8	4	1004			30	93%	23% (0.0 mm)	5	2.5 - 4.0
	1200	12	SSE	1.7	4	1006			31	84%	25% (0.0 mm)	6	4.0 - 6.0
	1800	11	SW	1.7	4	1004			31	86%	32% (0.2 mm)	7	6.0 - 9.0
01-06-24	0001	12	SSW	1.6	4	1006	32	27	30	91%	23% (0.0 mm)	8	9.0 - 14.0
	0600	7	SSW	1.5	4	1005			30	94%	24% (0.0 mm)	9	Over 14.0
	1200	10	SSW	1.4	4	1007			30	85%	23% (0.0 mm)		
	1800	8	SSW	1.4	4	1004			31	89%	25% (0.0 mm)		
02-06-24	0001	10	S	1.3	4	1007	32	27	30	91%	20% (0.0 mm)		
	0600	10	SSE	1.3	4	1005			30	96%	19% (0.0 mm)		
	1200	11	SE	1.3	4	1007			30	83%	18% (0.0 mm)		
	1800	13	SE	1.3	4	1004			31	87%	10% (0.0 mm)		

30 May 24 Thu (Probability 98%)

31 May 24 Fri (Probability 95%)

01 June 24 Sat (Probability 90%)

02 June 24 Sun (Probability 80%)



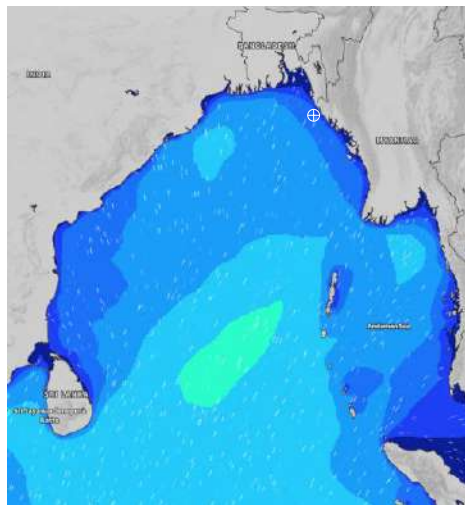
Significant wave height (m)

MARINE WEATHER FORECAST- 15 NM WEST OF ST. MARTIN'S LIGHT HOUSE (Lat 20° 37'N, Long 092° 03'E)

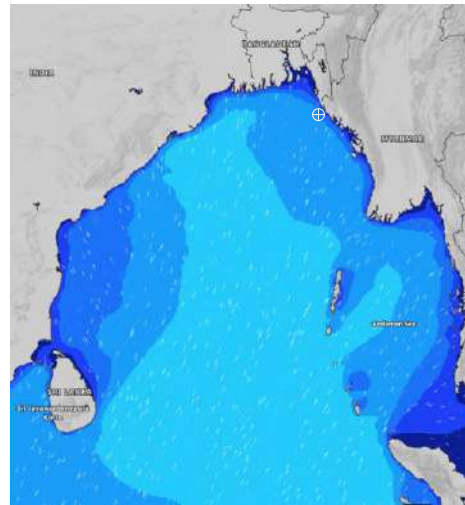
DATE : 30 May to 06 June 2024

Date	Time	Max Wind Spd (kts)	Wind Direction	Wave Ht (m)	Sea State	Baro Pressure	Air Temp		Sea Surface Temp	Humidity (%)	Prob of Rain (%)	Sea State	Wave Ht (m)
							Max	Min					
03-06-24	0001	13	S	1.3	4	1006	32	27	30	89%	32% (0.2 mm)	0	0
	0600	12	SW	1.4	4	1005			29	92%	16% (0.0 mm)	1	0 - 0.1
	1200	10	S	1.5	4	1006			30	83%	17% (0.0 mm)	2	0.1 - 0.5
	1800	14	SW	1.8	4	1004			29	88%	18% (0.0 mm)	3	0.5 - 1.25
04-06-24	0001	15	SSW	1.9	3	1006	32	27	30	91%	23% (0.1 mm)	4	1.25 - 2.5
	0600	12	SSW	1.9	4	1004			29	93%	25% (0.1 mm)	5	2.5 - 4.0
	1200	11	S	1.9	4	1005			29	83%	38% (0.3 mm)	6	4.0 - 6.0
	1800	12	SSW	2.0	4	1003			29	86%	37% (0.2 mm)	7	6.0 - 9.0
05-06-24	0001	15	S	2.0	4	1004	32	28	30	92%	16% (0.0 mm)	8	9.0 - 14.0
	0600	10	S	2.1	4	1003			29	98%	25% (0.1 mm)	9	Over 14.0
	1200	9	SSE	2.0	4	1004			29	83%	22% (0.0 mm)		
	1800	15	S	2.0	4	1002			29	86%	24% (0.1 mm)		
06-06-24	0001	12	S	2.1	4	1003	32	28	30	91%	33% (0.2 mm)		
	0600	18	SSW	2.1	4	1003			29	92%	26% (0.1 mm)		
	1200	13	S	2.1	4	1004			29	88%	35% (0.3 mm)		
	1800	15	SSW	2.1	4	1002			29	87%	34% (0.3 mm)		

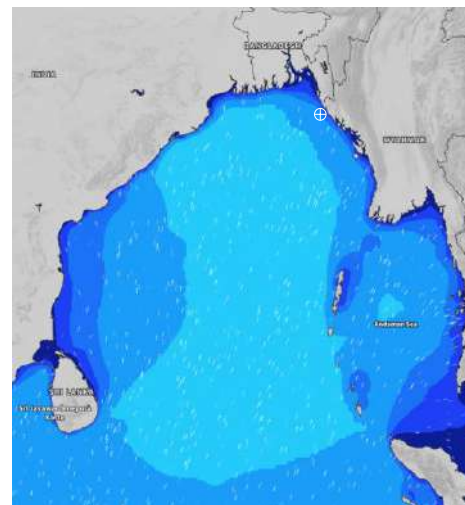
03 June 24 Mon (Probability 70%)



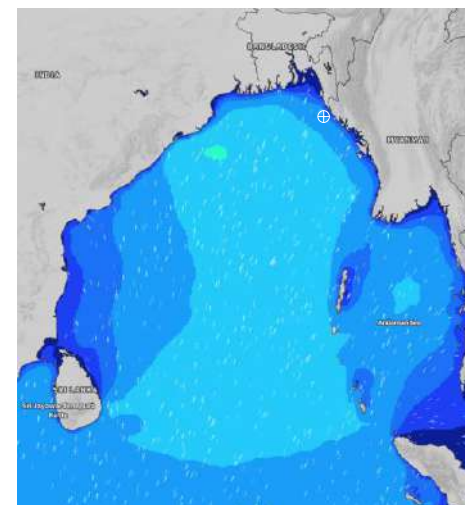
04 June 24 Tue (Probability 60%)



05 June 24 Wed (Probability 50%)



06 June 24 Thu (Probability 50%)



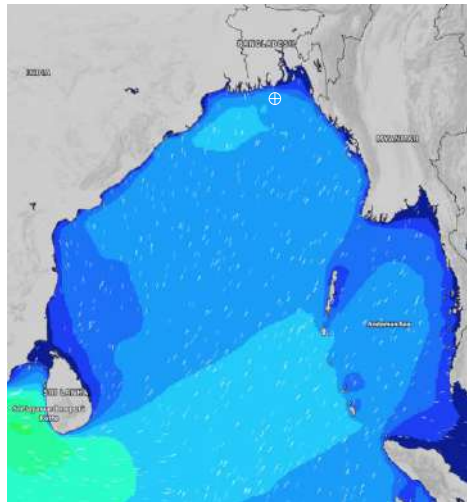
Significant wave height (m)

MARINE WEATHER FORECAST- 40 NM ESE OF PAYRA FAIRWAY (Lat 21° 07' N, Long 090° 45' E)

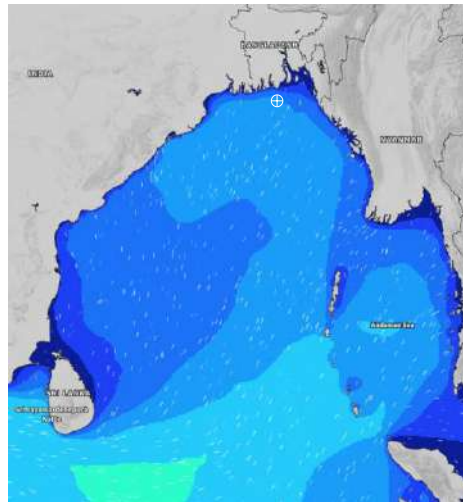
DATE : 30 May to 06 June 2024

Date	Time	Max Wind Spd (kts)	Wind Direction	Wave Ht (m)	Sea State	Baro Pressure	Air Temp		Sea Surface Temp	Humidity (%)	Prob of Rain (%)	Sea State	Wave Ht (m)
							Max	Min					
30-05-24	0001	21	S	2.6	5	1003	32	28	31	89%	28% (0.1 mm)	0	0
	0600	17	S	2.5	5	1003			30	91%	29% (0.1 mm)	1	0 - 0.1
	1200	17	S	2.3	4	1005			31	82%	25% (0.1 mm)	2	0.1 - 0.5
	1800	17	SSW	2.2	4	1002			31	88%	23% (0.0 mm)	3	0.5 - 1.25
31-05-24	0001	18	SSW	2.1	4	1003	32	28	31	86%	30% (0.2 mm)	4	1.25 - 2.5
	0600	17	S	1.9	4	1004			31	90%	32% (0.2 mm)	5	2.5 - 4.0
	1200	16	SW	1.9	4	1005			31	82%	34% (0.2 mm)	6	4.0 - 6.0
	1800	16	SSW	1.9	4	1003			30	89%	33% (0.2 mm)	7	6.0 - 9.0
01-06-24	0001	16	SW	1.8	4	1005	32	28	30	89%	20% (0.0 mm)	8	9.0 - 14.0
	0600	15	S	1.7	4	1004			30	93%	16% (0.0 mm)	9	Over 14.0
	1200	14	SSW	1.7	4	1006			31	85%	22% (0.0 mm)		
	1800	15	S	1.6	4	1003			31	89%	18% (0.0 mm)		
02-06-24	0001	16	SSW	1.5	4	1005	32	28	30	86%	20% (0.0 mm)		
	0600	14	S	1.4	4	1005			30	91%	19% (0.0 mm)		
	1200	15	SSW	1.5	4	1006			31	82%	22% (0.0 mm)		
	1800	16	S	1.4	4	1004			30	86%	18% (0.0 mm)		

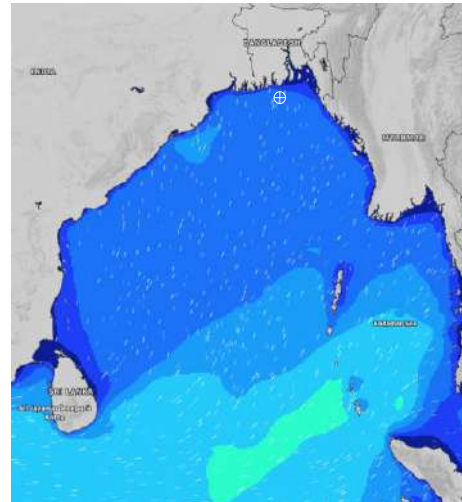
30 May 24 Thu (Probability 98%)



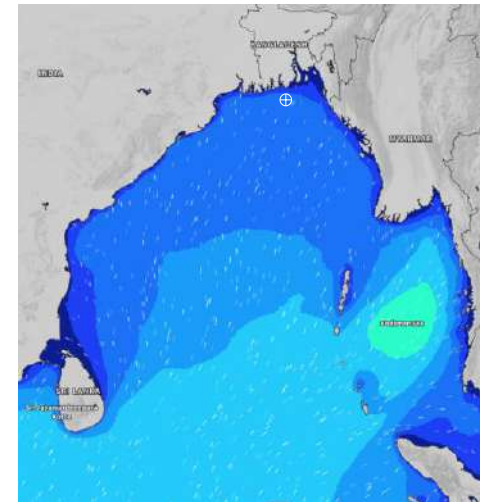
31 May 24 Fri (Probability 95%)



01 June 24 Sat (Probability 90%)



02 June 24 Sun (Probability 80%)



Significant wave height (m)

MARINE WEATHER FORECAST- 40 NM ESE OF PAYRA FAIRWAY (Lat 21° 07' N, Long 090° 45' E)

DATE : 30 May to 06 June 2024

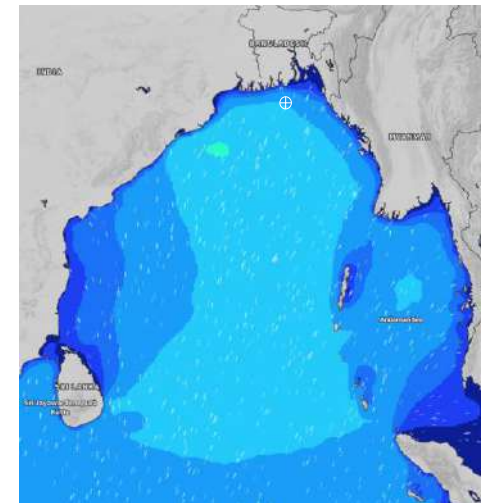
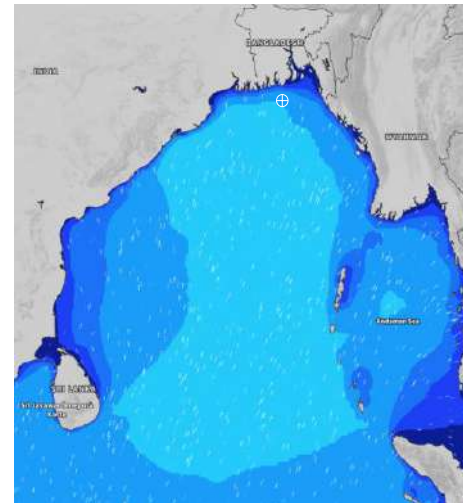
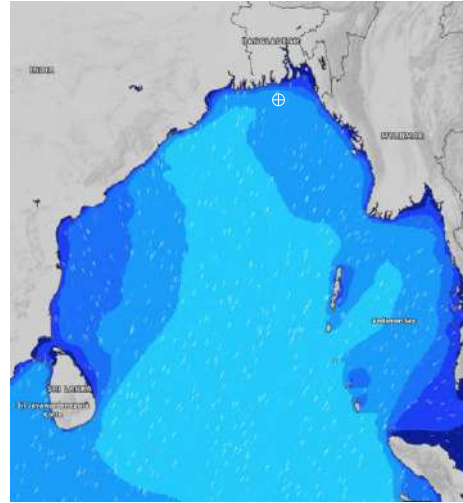
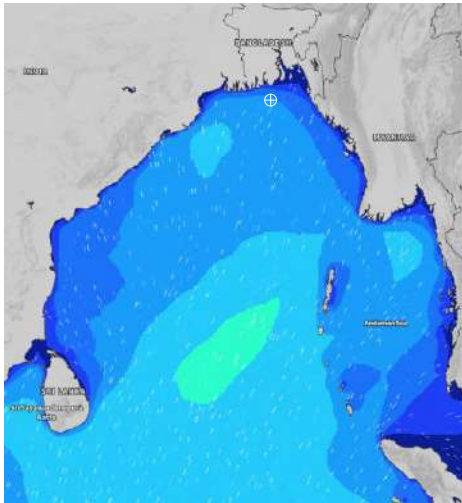
Date	Time	Max Wind Spd (kts)	Wind Direction	Wave Ht (m)	Sea State	Baro Pressure	Air Temp		Sea Surface Temp	Humidity (%)	Prob of Rain (%)	Sea State	Wave Ht (m)
							Max	Min					
03-06-24	0001	18	SSW	1.6	4	1004	32	28	31	89%	30% (0.2 mm)	0	0
	0600	17	SW	1.8	4	1004			30	92%	32% (0.2 mm)	1	0 - 0.1
	1200	16	SSW	1.8	4	1005			31	83%	34% (0.2 mm)	2	0.1 - 0.5
	1800	21	SSW	2.2	4	1003			31	87%	32% (0.2 mm)	3	0.5 - 1.25
04-06-24	0001	21	SSW	2.3	4	1004	32	28	30	88%	23% (0.0 mm)	4	1.25 - 2.5
	0600	19	SSW	2.3	4	1004			29	92%	20% (0.0 mm)	5	2.5 - 4.0
	1200	18	S	2.2	4	1005			30	83%	24% (0.0 mm)	6	4.0 - 6.0
	1800	21	S	2.3	4	1002			30	88%	25% (0.0 mm)	7	6.0 - 9.0
05-06-24	0001	18	SSW	2.3	4	1004	32	28	30	89%	23% (0.0 mm)	8	9.0 - 14.0
	0600	15	SSW	2.3	4	1003			29	90%	25% (0.0 mm)	9	Over 14.0
	1200	18	SSW	2.3	4	1004			30	86%	30% (0.2 mm)		
	1800	18	SW	2.3	4	1002			30	88%	24% (0.1 mm)		
06-06-24	0001	16	SW	2.4	4	1003	32	28	30	88%	28% (0.1 mm)		
	0600	18	SW	2.4	4	1003			29	91%	30% (0.2 mm)		
	1200	15	SSW	2.3	4	1004			30	83%	36% (0.2 mm)		
	1800	14	SSW	2.3	4	1003			30	89%	27% (0.1 mm)		

03 June 24 Mon (Probability 70%)

04 June 24 Tue (Probability 60%)

05 June 24 Wed (Probability 50%)

06 June 24 Thu (Probability 50%)



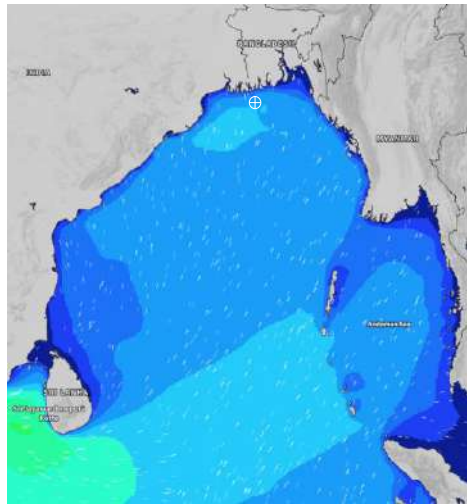
Significant wave height (m)

MARINE WEATHER FORECAST- 10 NM SOUTH OF MONGLA FAIRWAY (Lat 21° 16' N, Long 089° 34' E)

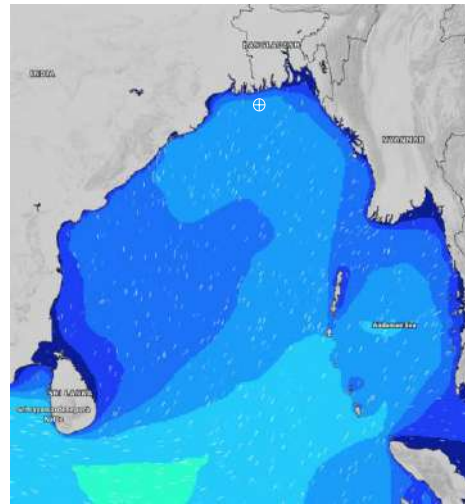
DATE : 30 May to 06 June 2024

Date	Time	Max Wind Spd (kts)	Wind Direction	Wave Ht (m)	Sea State	Baro Pressure	Air Temp		Sea Surface Temp	Humidity (%)	Prob of Rain (%)	Sea State	Wave Ht (m)
							Max	Min					
30-05-24	0001	25	S	2.6	5	1001	34	29	30	91%	22% (0.0 mm)	0	0
	0600	20	SSW	2.5	5	1002			30	93%	30% (0.0 mm)	1	0 - 0.1
	1200	21	SSW	2.4	4	1004			31	85%	25% (0.0 mm)	2	0.1 - 0.5
	1800	21	S	2.2	4	1001			30	86%	22% (0.0 mm)	3	0.5 - 1.25
31-05-24	0001	20	S	2.2	4	1002	33	29	30	89%	24% (0.0 mm)	4	1.25 - 2.5
	0600	22	SSW	2.1	4	1003			30	91%	23% (0.0 mm)	5	2.5 - 4.0
	1200	20	SSW	2.0	4	1005			31	83%	20% (0.0 mm)	6	4.0 - 6.0
	1800	19	S	2.0	4	1002			30	88%	21% (0.0 mm)	7	6.0 - 9.0
01-06-24	0001	20	SSW	2.0	4	1004	33	28	30	90%	22% (0.0 mm)	8	9.0 - 14.0
	0600	22	S	2.0	4	1003			30	93%	35% (0.2 mm)	9	Over 14.0
	1200	19	S	1.9	4	1004			31	78%	20% (0.0 mm)		
	1800	18	S	1.9	4	1002			30	86%	21% (0.0 mm)		
02-06-24	0001	17	SSW	2.9	4	1004	33	28	30	89%	22% (0.0 mm)		
	0600	18	SSW	1.8	4	1005			30	92%	30% (0.2 mm)		
	1200	16	SW	1.8	4	1004			31	79%	23% (0.0 mm)		
	1800	18	SSW	1.8	4	1003			30	86%	25% (0.0 mm)		

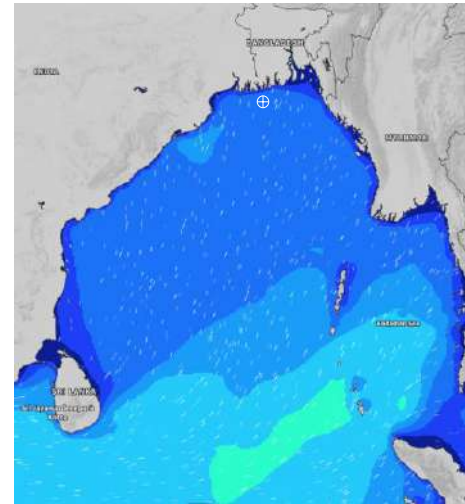
30 May 24 Thu (Probability 98%)



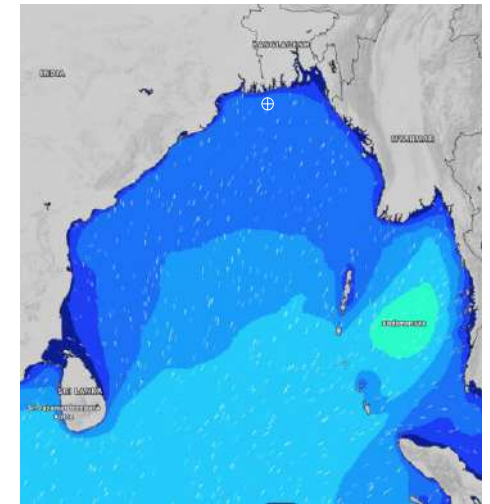
31 May 24 Fri (Probability 95%)



01 June 24 Sat (Probability 90%)



02 June 24 Sun (Probability 80%)



Significant wave height (m)

MARINE WEATHER FORECAST- 10 NM SOUTH OF MONGLA FAIRWAY (Lat 21° 16' N, Long 089° 34' E)

DATE : 30 May to 06 June 2024

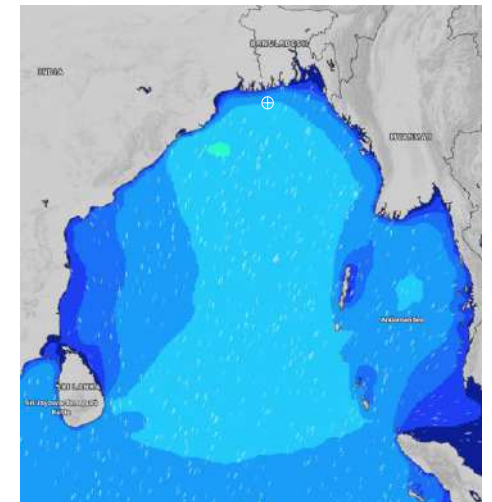
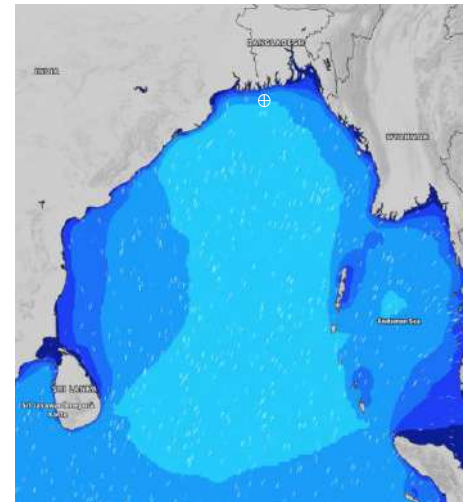
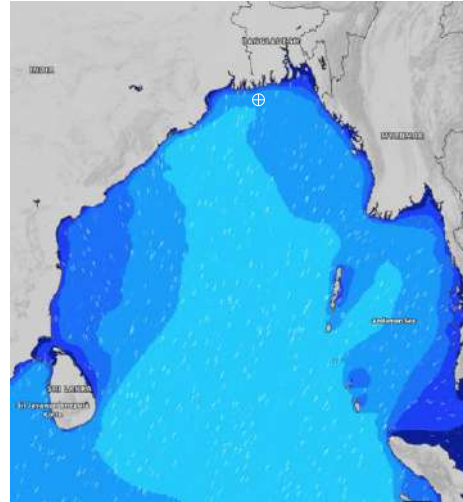
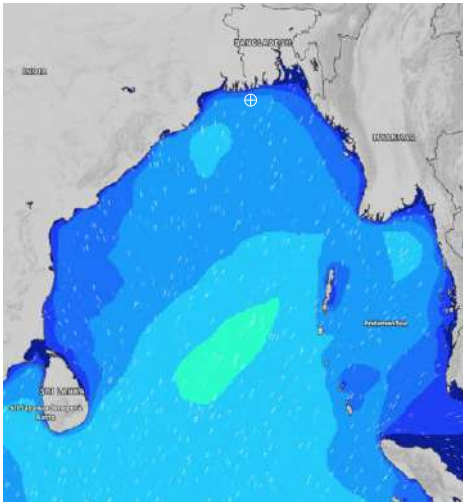
Date	Time	Max Wind Spd (kts)	Wind Direction	Wave Ht (m)	Sea State	Baro Pressure	Air Temp		Sea Surface Temp	Humidity (%)	Prob of Rain (%)	Sea State	Wave Ht (m)
							Max	Min					
03-06-24	0001	23	SSW	1.7	4	1004	33	28	30	89%	20% (0.0 mm)	0	0
	0600	21	SSW	1.9	4	1003			30	93%	31% (0.2 mm)	1	0 - 0.1
	1200	19	SW	2.0	4	1004			31	75%	33% (0.2 mm)	2	0.1 - 0.5
	1800	22	SSW	2.2	4	1002			30	86%	35% (0.2 mm)	3	0.5 - 1.25
04-06-24	0001	23	SSW	2.4	4	1003	33	28	30	88%	21% (0.0 mm)	4	1.25 - 2.5
	0600	21	SSW	2.3	4	1003			30	91%	25% (0.0 mm)	5	2.5 - 4.0
	1200	22	S	2.3	4	1004			31	77%	32% (0.2 mm)	6	4.0 - 6.0
	1800	22	SSW	2.3	4	1001			30	86%	20% (0.0 mm)	7	6.0 - 9.0
05-06-24	0001	18	SSW	2.3	4	1003	34	29	30	89%	34% (0.2 mm)	8	9.0 - 14.0
	0600	17	SSW	2.3	4	1002			30	93%	22% (0.0 mm)	9	Over 14.0
	1200	19	SSW	2.3	4	1002			31	86%	35% (0.2 mm)		
	1800	15	SSW	2.3	4	1000			31	88%	24% (0.0 mm)		
06-06-24	0001	16	SSW	2.2	4	1002	34	29	30	82%	33% (0.2 mm)		
	0600	18	SSW	2.3	4	1001			30	96%	25% (0.0 mm)		
	1200	15	SSW	2.2	4	1002			31	88%	32% (0.2 mm)		
	1800	17	SSW	2.3	4	1000			31	89%	26% (0.0 mm)		

03 June 24 Mon (Probability 70%)

04 June 24 Tue (Probability 60%)

05 June 24 Wed (Probability 50%)

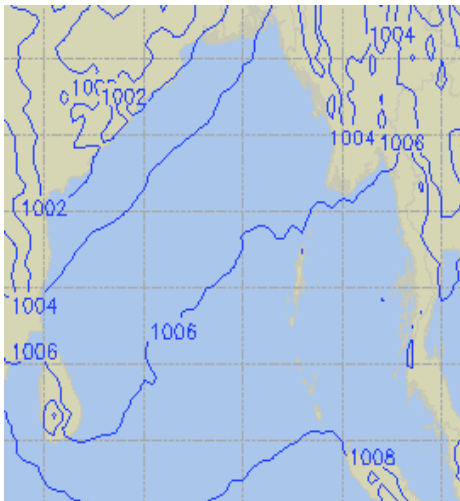
06 June 24 Thu (Probability 50%)



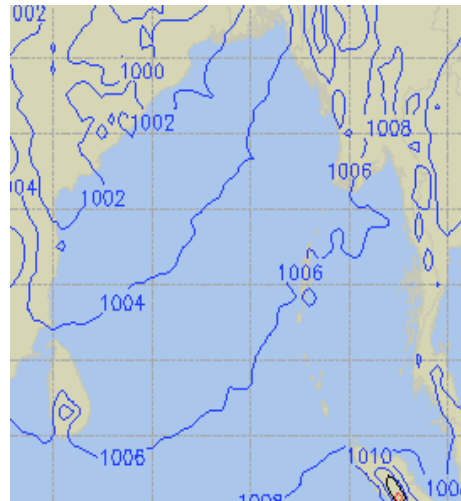
Significant wave height (m)

PREDICTED SURFACE PRESSURE FORECAST (30 May to 05 June 2024)

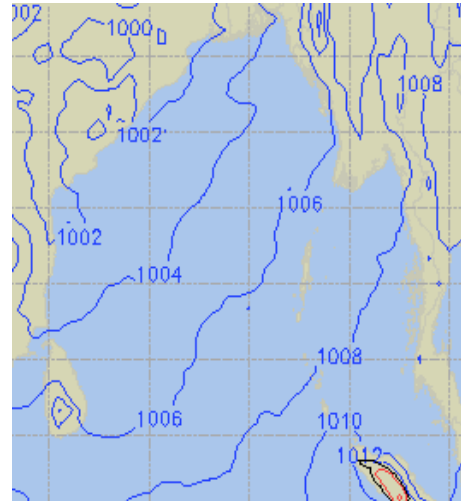
30 May 24 Thu (Probability 98%)



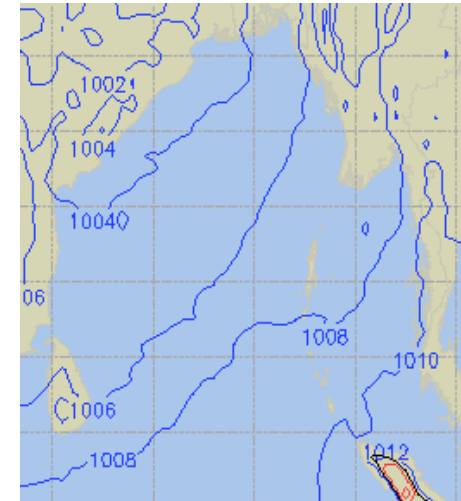
31 May 24 Fri (Probability 95%)



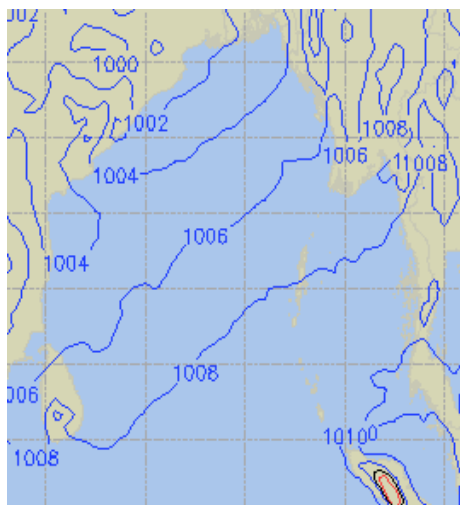
01 June 24 Sat (Probability 90%)



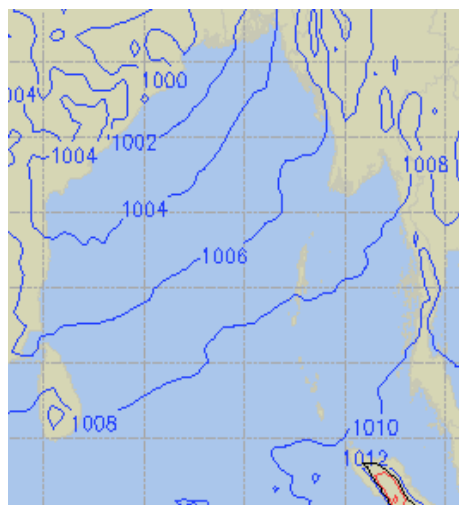
02 June 24 Sun (Probability 80%)



03 June 24 Mon (Probability 70%)



04 June 24 Tue (Probability 60%)



05 June 24 Wed (Probability 50%)

