



SUMMARY OF MARINE WEATHER FORECAST
COASTAL AREA OF BANGLADESH
DATE: 30 April to 07 May 2026



Fleet Forecast	Steep pressure gradient over North Bay and adjoining area persists. Maritime ports of Chattogram, Cox's Bazar, Mongla and Payra have been advised to keep hoisted local cautionary signal number three (R) three.
Wind Direction, Speed	South-west/Southerly 10-15 kts, temporary gusting up to 25 kts.
Wave Height & Sea State	Ctg Outer Anchorage: 0.3 to 0.9 m (Sea state: 2 to 3) Abeam to Cox's Bazar: 1.2 to 1.9 m (Sea state: 3 to 4) St. Martin's Island: 1.0 to 1.7 m (Sea state 3 to 4) Payra Fairway Buoy: 1.0 to 2.1 m (Sea state: 3 to 4) Mongla Fairway Buoy: 1.0 to 2.2 m (Sea state: 3 to 4) Outer EEZ: 1.0 to 1.9 m (Sea state: 3 to 4)
Sea Surface Temperature	25° C - 28° C
Baro Pressure	1007-1010 mb
Rainfall	Cloudy to cloudy sky with moderate to heavy rain/thunder showers with gusty wind is likely to occur over Bay of Bengal and adjoining area.
Fog & Visibility	Hazy condition over the Bay of Bengal & coastal area, Visibility 1.0 – 5.0 km

Marine Weather Outlook (30 April to 07 May 2026):

- Cloudy to cloudy sky with moderate to heavy rain/thunder showers with gusty wind is likely to occur over Bay of Bengal and adjoining area.
- Hazy condition over the Bay of Bengal & coastal area.
- Rainfall activity may continue.



MARINE WEATHER FORECAST (30 April to 07 May 2026)

PATENGA POINT (22° 12' N, 091° 38' E)



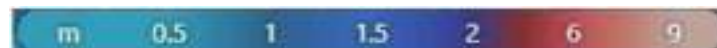
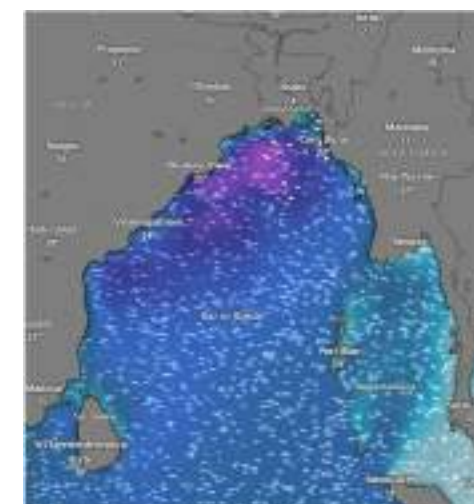
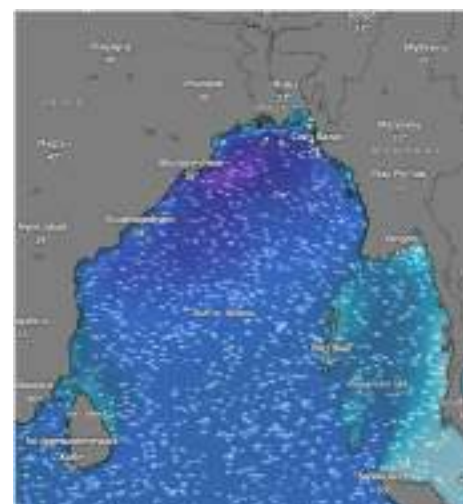
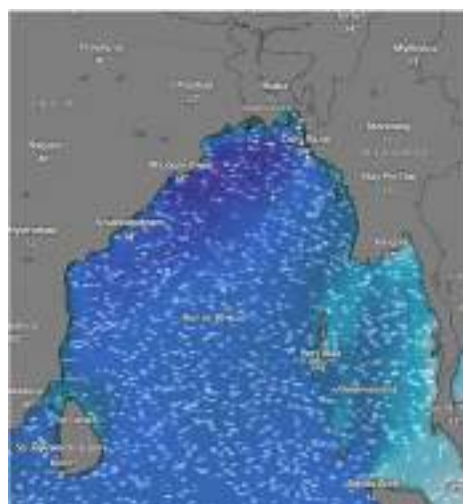
Date	Time	Air Temp (°C)		Sea Surface Temp (°C)	Baro Pressure (mbar)	Wind Direction	Wind Spd (kts)		Wave Ht (m)	Sea State	Humidity (%)	Prob of Rain (%)	Amount of Rain (mm)
		Max	Min				Gusting	Avg					
30-04-26 (Thursday)	0001	29	23	25	1009	SSW	15	11	0.4	2	90	51	0.5
	0600			26	1010	SE	09	05	0.5	3	91	24	0.1
	1200			28	1008	SSW	11	07	0.5	3	81	35	0.3
	1800			26	1007	SSW	14	10	0.4	2	87	58	0.6
01-05-26 (Friday)	0001	29	23	25	1009	S	10	06	0.4	2	90	52	0.5
	0600			26	1010	SSE	16	12	0.7	3	92	59	0.6
	1200			28	1008	SSE	20	15	0.8	3	88	74	0.7
	1800			26	1007	SSE	22	18	0.7	3	93	24	0.4
02-05-26 (Saturday)	0001	30	24	25	1007	SSE	18	14	0.6	3	92	91	2.5
	0600			26	1008	SSE	17	13	0.6	3	94	46	0.5
	1200			28	1006	S	20	15	0.6	3	90	65	0.7
	1800			26	1005	SSW	21	15	0.7	3	95	43	0.5
03-05-26 (Sunday)	0001	29	23	25	1007	SSE	18	14	0.8	3	90	35	0.4
	0600			26	1008	SSE	22	18	0.7	3	91	98	2.5
	1200			28	1006	S	16	12	0.8	3	88	95	3.5
	1800			26	1005	SSE	15	11	0.5	3	93	45	0.6

30 Apr 2026

01 May 2026

02 May 2026

03 May 2026



Significant wave height (m)



MARINE WEATHER FORECAST (30 April to 07 May 2026) PATENGA POINT (22° 12' N, 091° 38' E)



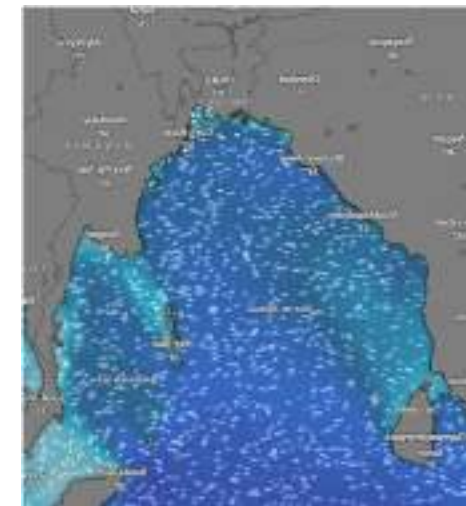
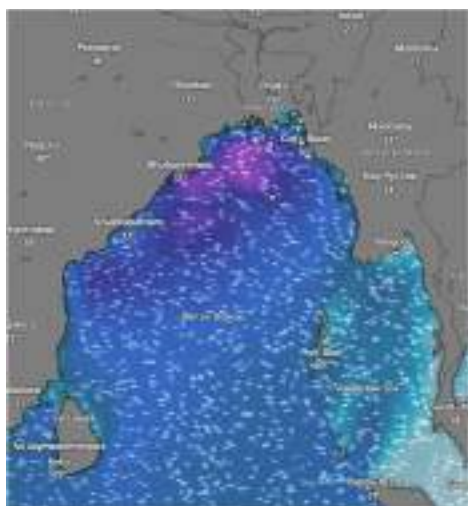
Date	Time	Air Temp (°C)		Sea Surface Temp (°C)	Baro Pressure (mbar)	Wind Direction	Wind Spd (kts)		Wave Ht (m)	Sea State	Humidity (%)	Prob of Rain (%)	Amount of Rain (mm)
		Max	Min				Gusting	Avg					
04-05-26 (Monday)	0001	29	23	25	1010	SSE	28	17	0.9	3	93	51	0.5
	0600			26	1011	SSE	22	16	0.8	3	91	73	0.8
	1200			28	1009	SSW	18	11	0.8	3	87	68	0.7
	1800			26	1008	SSE	26	21	0.8	3	89	16	0.0
05-05-26 (Tuesday)	0001	29	23	25	1011	SSE	17	13	0.5	3	92	24	0.1
	0600			26	1013	SSE	16	12	0.4	2	93	33	0.3
	1200			28	1010	SSW	13	09	0.5	3	79	16	0.0
	1800			26	1009	S	12	08	0.5	3	86	18	0.0
06-05-26 (Wednesday)	0001	30	24	25	1009	SSW	09	5	0.5	3	92	32	0.3
	0600			26	1010	SSE	10	9	0.5	3	93	37	0.4
	1200			28	1008	S	17	13	0.4	2	81	18	0.0
	1800			26	1007	SSW	12	08	0.3	2	85	10	0.0
07-05-26 (Thursday)	0001	30	24	25	1008	SSW	10	6	0.3	2	92	59	0.6
	0600			26	1009	SSE	09	05	0.3	2	93	43	0.5
	1200			28	1007	SSW	10	06	0.4	2	80	15	0.0
	1800			26	1006	SSW	07	04	0.3	2	87	37	0.4

04 May 2026

05 May 2026

06 May 2026

07 May 2026



Significant wave height (m)



MARINE WEATHER FORECAST (30 April to 07 May 2026)

ABEAM TO KUTUBDIA (21° 51' N, 091° 40' E)



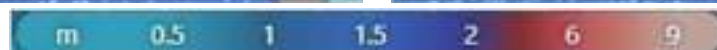
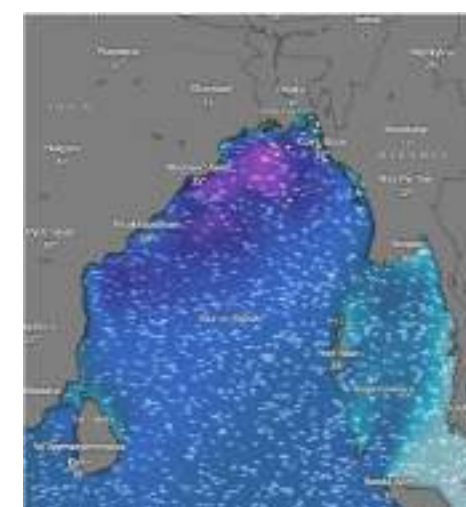
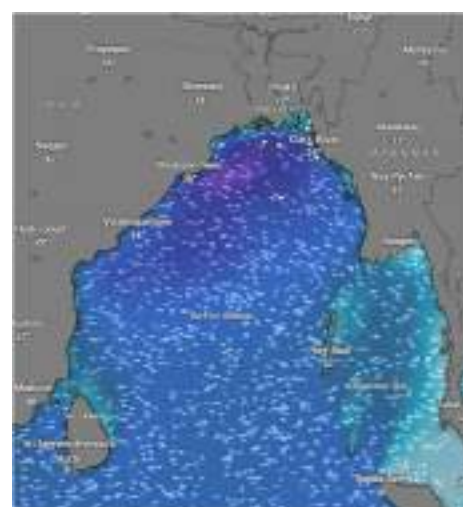
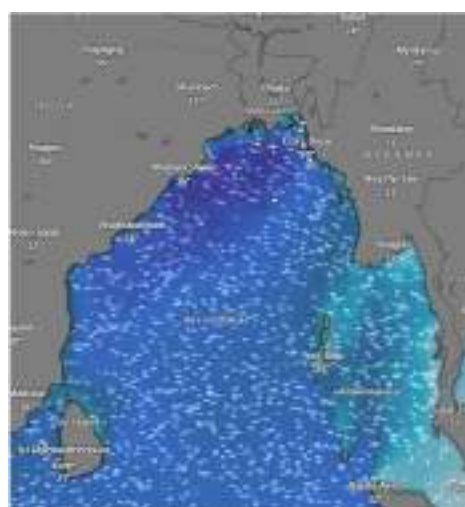
Date	Time	Air Temp (°C)		Sea Surface Temp (°C)	Baro Pressure (mbar)	Wind Direction	Wind Spd (kts)		Wave Ht (m)	Sea State	Humidity (%)	Prob of Rain (%)	Amount of Rain (mm)
		Max	Min				Gusting	Avg					
30-04-26 (Thursday)	0001	29	23	25	1009	SSW	15	11	0.6	3	90	51	0.5
	0600			26	1010	SE	22	18	0.7	3	91	24	0.1
	1200			28	1008	SSW	20	15	0.7	3	81	35	0.3
	1800			26	1007	S	14	10	0.6	3	87	58	0.6
01-05-26 (Friday)	0001	29	23	25	1009	S	15	10	0.5	3	90	52	0.5
	0600			26	1010	SSE	22	18	0.7	3	92	59	0.6
	1200			28	1008	S	21	18	0.8	3	88	74	0.7
	1800			26	1007	SSE	28	22	0.8	3	93	24	0.4
02-05-26 (Saturday)	0001	30	24	25	1007	SSE	23	18	1.0	3	92	91	2.5
	0600			26	1008	S	21	16	0.8	3	94	46	0.5
	1200			28	1006	SSE	24	18	0.8	3	90	65	0.7
	1800			26	1005	SSW	20	15	0.8	3	95	43	0.5
03-05-26 (Sunday)	0001	30	24	25	1007	SSE	28	20	0.9	3	90	35	0.4
	0600			26	1008	S	26	18	0.9	3	91	98	2.5
	1200			28	1006	S	25	17	1.1	3	88	95	3.5
	1800			26	1005	SSE	17	12	0.9	3	93	45	0.6

30 Apr 2026

01 May 2026

02 May 2026

03 May 2026



Significant wave height (m)



MARINE WEATHER FORECAST (30 April to 07 May 2026)

ABEAM TO KUTUBDIA (21° 51' N, 091° 40' E)



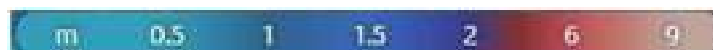
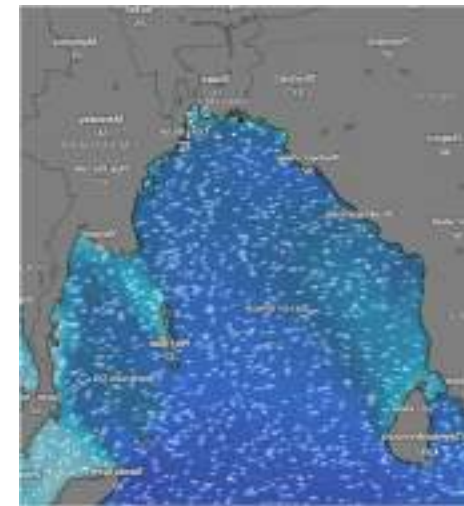
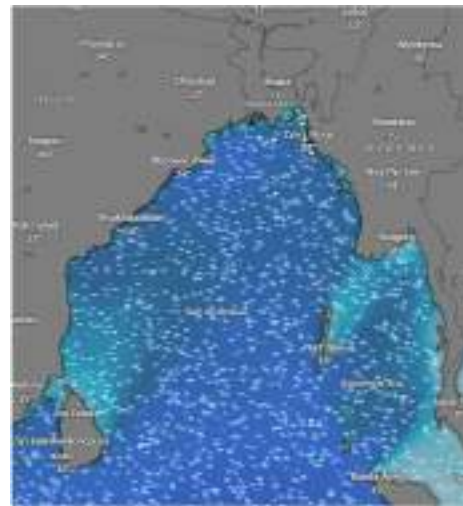
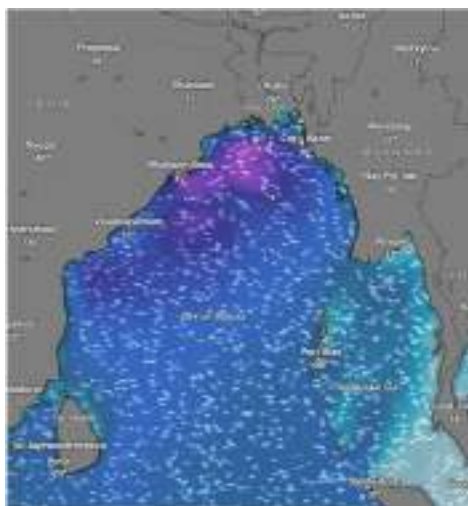
Date	Time	Air Temp (°C)		Sea Surface Temp (°C)	Baro Pressure (mbar)	Wind Direction	Wind Spd (kts)		Wave Ht (m)	Sea State	Humidity (%)	Prob of Rain (%)	Amount of Rain (mm)
		Max	Min				Gusting	Avg					
04-05-26 (Monday)	0001	29	23	25	1010	SSE	27	17	0.8	3	90	55	0.5
	0600			26	1011	SE	26	17	0.8	3	93	74	0.8
	1200			28	1009	SSW	20	10	0.8	3	85	68	0.7
	1800			26	1008	SSE	26	21	0.7	3	88	13	0.0
05-05-26 (Tuesday)	0001	29	23	25	1011	S	22	16	0.8	3	91	26	0.1
	0600			26	1013	SSE	20	15	0.7	3	92	35	0.3
	1200			28	1010	SE	14	10	0.8	3	79	16	0.0
	1800			26	1009	SSW	16	12	0.8	3	86	18	0.0
06-05-26 (Wednesday)	0001	29	23	25	1009	SSW	16	12	0.6	3	92	32	0.3
	0600			26	1010	SSE	18	14	0.6	3	93	37	0.4
	1200			28	1008	SSE	18	14	0.6	3	81	18	0.0
	1800			26	1007	SSW	13	09	0.5	3	85	10	0.0
06-05-26 (Wednesday)	0001	30	24	25	1008	SSW	10	06	0.5	3	92	59	0.6
	0600			26	1009	SSE	13	09	0.5	3	93	43	0.5
	1200			28	1007	SSW	11	07	0.4	2	80	15	0.0
	1800			26	1006	W	09	05	0.4	2	87	37	0.4

04 May 2026

05 May 2026

06 May 2026

07 May 2026



Significant wave height (m)



MARINE WEATHER FORECAST (30 April to 07 May 2026)

ABEAM TO ELEPHANT POINT (21° 11' N, 091° 52' E)



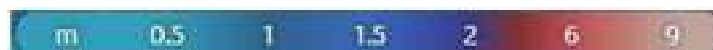
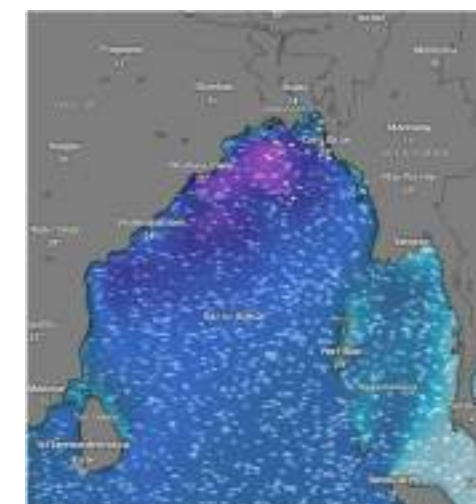
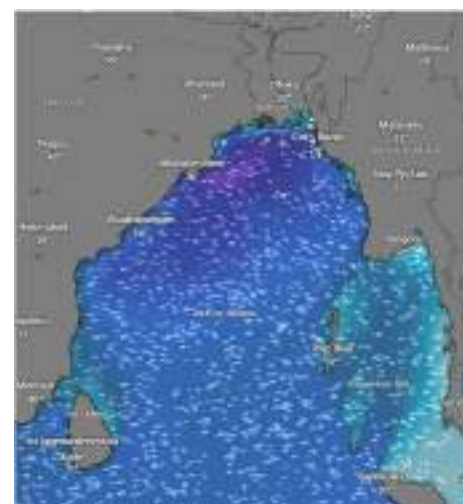
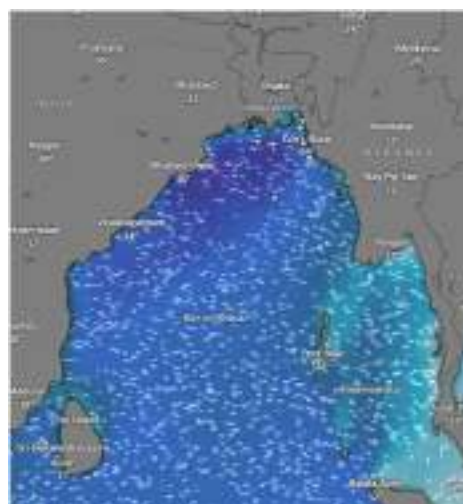
Date	Time	Air Temp (°C)		Sea Surface Temp (°C)	Baro Pressure (mbar)	Wind Direction	Wind Spd (kts)		Wave Ht (m)	Sea State	Humidity (%)	Prob of Rain (%)	Amount of Rain (mm)
		Max	Min				Gusting	Avg					
30-04-26 (Thursday)	0001	29	23	25	1009	SW	15	11	1.2	4	91	51	0.5
	0600			26	1010	SE	13	09	1.2	4	93	24	0.1
	1200			28	1008	SSW	15	11	1.3	4	85	35	0.3
	1800			26	1007	SSW	13	09	1.2	3	89	58	0.6
01-05-26 (Friday)	0001	29	23	25	1009	S	15	11	1.1	3	90	52	0.5
	0600			26	1010	SSE	18	14	1.1	3	92	59	0.6
	1200			28	1008	SSW	20	15	1.4	4	88	74	0.7
	1800			26	1007	SW	16	12	1.4	4	93	24	0.4
02-05-26 (Saturday)	0001	30	24	25	1007	S	17	17	1.7	4	92	91	2.5
	0600			26	1008	SSW	12	08	1.6	4	94	46	0.5
	1200			28	1006	SSE	18	14	1.5	4	90	65	0.7
	1800			26	1005	SSW	17	13	1.5	4	95	43	0.5
03-05-26 (Sunday)	0001	30	24	25	1007	SSE	22	18	1.6	4	91	35	0.4
	0600			26	1008	SSE	20	15	1.7	4	96	98	2.5
	1200			28	1006	SSW	21	17	1.7	4	85	95	3.5
	1800			26	1005	E	14	10	1.6	4	93	45	0.6

30 Apr 2026

01 May 2026

02 May 2026

03 May 2026



Significant wave height (m)



MARINE WEATHER FORECAST (30 April to 07 May 2026)

ABEAM TO ELEPHANT POINT (21° 11' N, 091° 52' E)



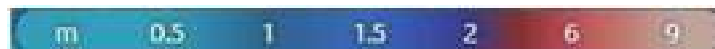
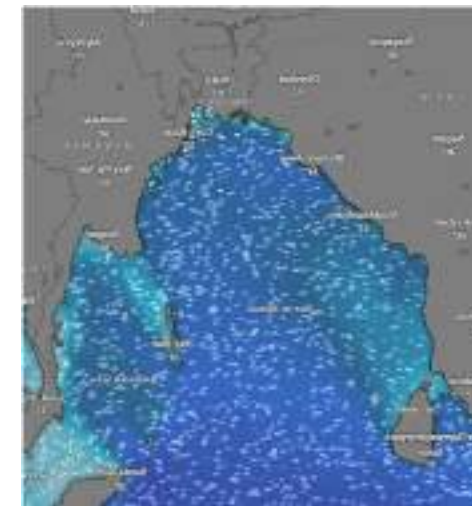
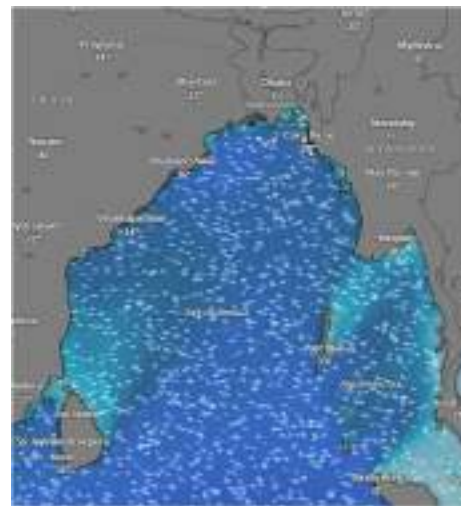
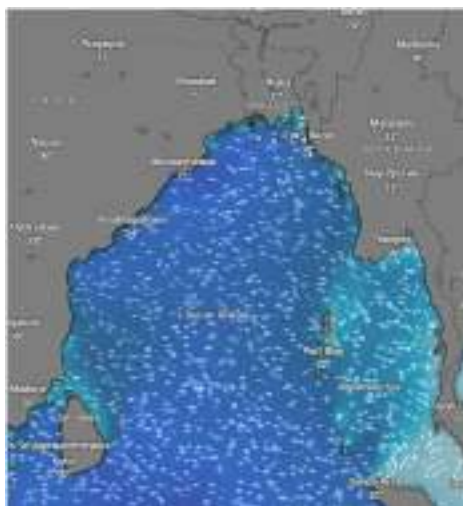
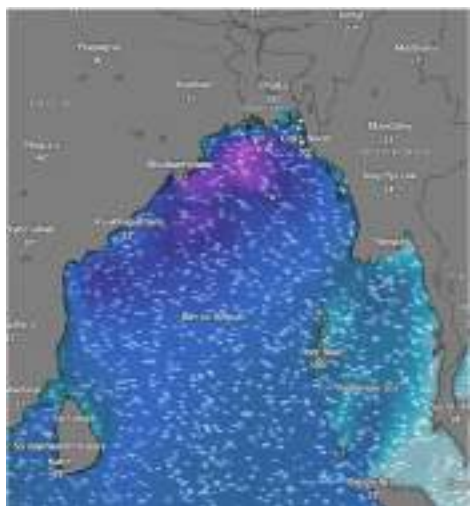
Date	Time	Air Temp (°C)		Sea Surface Temp (°C)	Baro Pressure (mbar)	Win Direction	Wind Spd (kts)		Wave Ht (m)	Sea State	Humidity (%)	Prob of Rain (%)	Amount of Rain (mm)
		Max	Min				Gusting	Avg					
04-05-26 (Monday)	0001	29	23	25	1010	SSE	27	18	1.6	4	90	53	0.5
	0600			26	1011	S	22	12	1.6	4	92	75	0.8
	1200			28	1009	S	21	13	1.6	4	88	64	0.7
	1800			26	1008	SE	25	16	1.5	4	89	16	0.0
05-05-26 (Tuesday)	0001	29	23	25	1011	SSW	14	10	1.2	3	92	25	0.1
	0600			26	1013	SE	15	11	1.2	3	93	33	0.3
	1200			28	1010	SE	12	08	1.1	3	79	16	0.0
	1800			26	1009	SSW	13	09	1.1	3	86	18	0.0
06-05-26 (Wednesday)	0001	29	23	25	1009	SSW	13	09	1.1	3	92	32	0.3
	0600			26	1010	SSE	17	13	1.1	3	93	37	0.4
	1200			28	1008	SSE	15	11	1.1	3	81	18	0.0
	1800			26	1007	SSW	12	08	1.0	3	85	10	0.0
06-05-26 (Wednesday)	0001	30	24	25	1008	SW	10	06	0.9	3	91	59	0.6
	0600			26	1009	SE	11	07	0.9	3	96	43	0.5
	1200			28	1007	SSW	10	06	0.9	3	82	15	0.0
	1800			26	1006	W	11	07	0.9	3	85	37	0.4

04 May 2026

05 May 2026

06 May 2026

07 May 2026



Significant wave height (m)



MARINE WEATHER FORECAST (30 April to 07 May 2026)

ABEAM TO ST. MARTIN'S LIGHT HOUSE (20° 37' N, 092° 08' E)



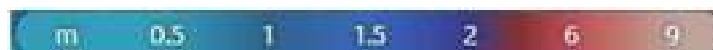
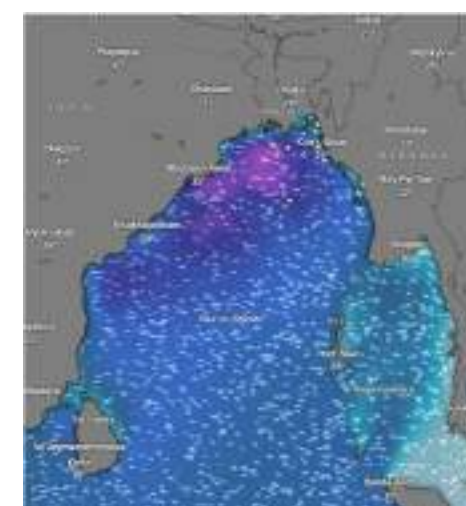
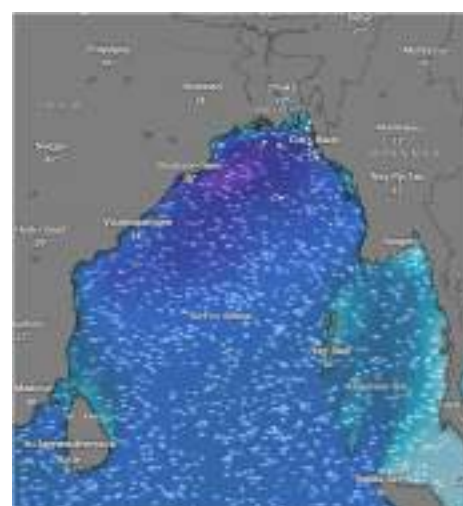
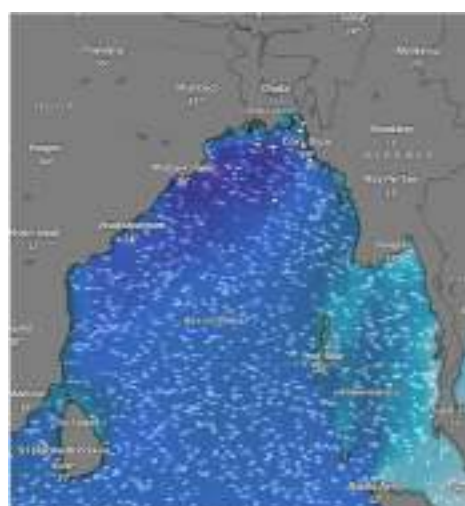
Date	Time	AirTemp (°C)		Sea Surface Temp (°C)	Baro Pressure (mbar)	Wind Direction	Wind Spd (kts)		Wave Ht (m)	Sea State	Humidity (%)	Prob of Rain (%)	Amount of Rain (mm)
		Max	Min				Gusting	Avg					
30-04-26 (Thursday)	0001	29	23	25	1009	SW	14	10	1.2	3	92	56	0.5
	0600			26	1010	SE	13	09	1.2	3	96	27	0.1
	1200			28	1008	S	18	14	1.3	4	83	35	0.3
	1800			26	1007	SSW	14	10	1.2	3	85	58	0.6
01-05-26 (Friday)	0001	29	23	25	1009	SSW	12	08	1.1	3	92	56	0.5
	0600			26	1010	SSE	16	12	1.1	3	95	58	0.6
	1200			28	1008	SSW	17	13	1.2	3	88	77	0.7
	1800			26	1007	W	14	10	1.5	4	93	25	0.4
02-05-26 (Saturday)	0001	30	24	25	1007	S	26	18	1.6	4	92	96	2.5
	0600			26	1008	SE	14	10	1.6	4	94	46	0.5
	1200			28	1006	SSE	17	13	1.6	4	90	65	0.7
	1800			26	1005	SSW	18	14	1.5	4	95	43	0.5
03-05-26 (Sunday)	0001	30	24	25	1007	W	13	09	1.5	4	90	35	0.4
	0600			26	1008	SSE	20	15	1.6	4	91	98	2.5
	1200			28	1006	SSW	17	13	1.6	4	88	95	3.5
	1800			26	1005	SW	14	10	1.6	4	93	45	0.6

30 Apr 2026

01 May 2026

02 May 2026

03 May 2026



Significant wave height (m)



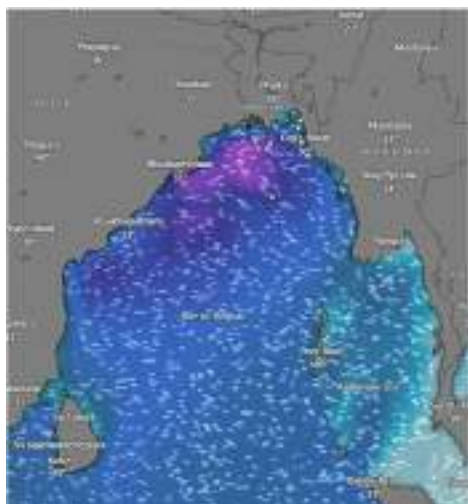
MARINE WEATHER FORECAST (30 April to 07 May 2026)

ABEAM TO ST. MARTIN'S LIGHT HOUSE (20° 37' N, 092° 08' E)



Date	Time	Air Temp (°C)		Sea Surface Temp (°C)	Baro Pressure (mbar)	Wind Direction	Wind Spd (kts)		Wave Ht (m)	Sea State	Humidity (%)	Prob of Rain (%)	Amount of Rain (mm)
		Max	Min				Gusting	Avg					
04-05-26 (Monday)	0001	29	23	25	1010	SSW	24	13	1.7	4	92	56	0.5
	0600			26	1011	SSE	18	10	1.6	4	93	72	0.8
	1200			28	1009	S	18	11	1.6	4	85	67	0.7
	1800			26	1008	SE	30	14	1.4	4	88	15	0.0
05-05-26 (Tuesday)	0001	29	23	25	1011	SSW	18	11	1.4	4	92	24	0.1
	0600			26	1013	SSE	15	08	1.3	4	93	33	0.3
	1200			28	1010	S	12	05	1.3	4	79	16	0.0
	1800			26	1009	SE	14	10	1.2	3	86	18	0.0
06-05-26 (Wednesday)	0001	29	23	25	1009	SW	11	07	1.0	3	92	32	0.3
	0600			26	1010	S	13	09	1.0	3	93	37	0.4
	1200			28	1008	E	10	05	1.0	3	81	18	0.0
	1800			26	1007	W	11	06	1.0	3	85	10	0.0
06-05-26 (Wednesday)	0001	30	24	25	1008	W	11	07	1.0	3	92	59	0.6
	0600			26	1009	W	09	05	0.9	3	93	43	0.5
	1200			28	1007	SW	10	06	0.9	3	80	15	0.0
	1800			26	1006	W	13	09	1.0	3	87	37	0.4

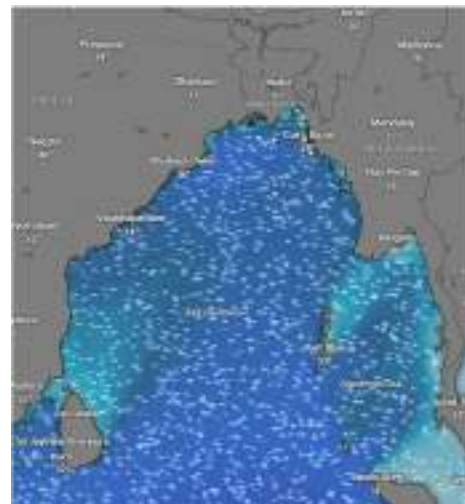
04 May 2026



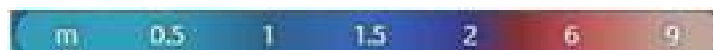
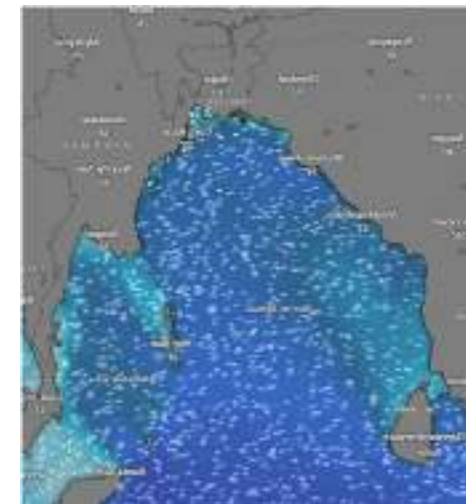
05 May 2026



06 May 2026



07 May 2026



Significant wave height (m)



MARINE WEATHER FORECAST (30 April to 07 May 2026)



PAYRA FAIRWAY (21° 22' N, 090° 6' E)

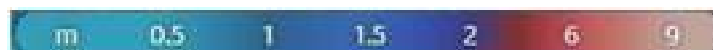
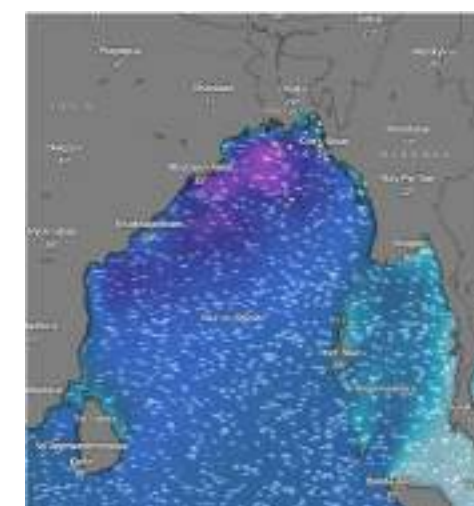
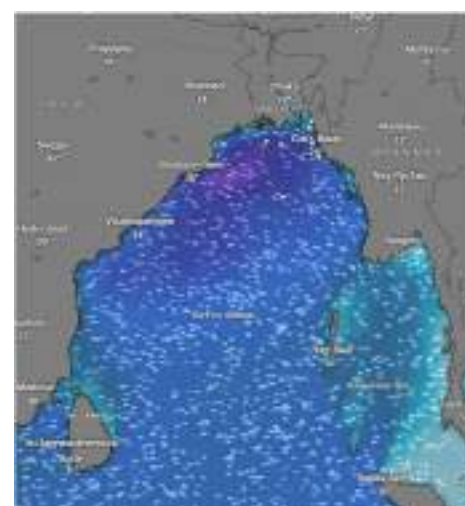
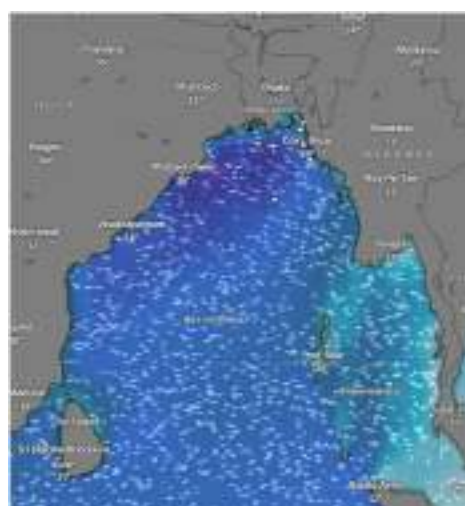
Date	Time	Air Temp (°C)		Sea Surface Temp (°C)	Baro Pressure (mbar)	Wind Direction	Wind Spd (kts)		Wave Ht (m)	Sea State	Humidity (%)	Prob of Rain (%)	Amount of Rain (mm)
		Max	Min				Gusting	Avg					
30-04-26 (Thursday)	0001	29	23	25	1009	W	14	10	1.6	4	91	50	0.5
	0600			26	1010	SE	11	07	1.5	4	95	22	0.1
	1200			28	1008	SSW	14	10	1.4	4	82	35	0.3
	1800			26	1007	SSW	18	14	1.4	4	86	54	0.6
01-05-26 (Friday)	0001	29	23	25	1009	SSW	15	11	1.4	4	92	52	0.5
	0600			26	1010	SSW	24	18	1.5	4	97	59	0.6
	1200			28	1008	SSW	25	19	2.0	4	88	74	0.7
	1800			26	1007	SSW	24	18	1.8	4	93	24	0.4
02-05-26 (Saturday)	0001	30	24	25	1007	SSW	23	17	1.9	4	92	91	2.5
	0600			26	1008	SW	17	13	1.9	4	94	46	0.5
	1200			28	1006	SSW	18	14	1.8	4	90	65	0.7
	1800			26	1005	SSW	24	18	1.9	4	95	43	0.5
03-05-26 (Sunday)	0001	30	24	25	1007	SSW	17	13	2.0	4	90	35	0.4
	0600			26	1008	SSW	24	18	2.1	4	91	98	2.5
	1200			28	1006	SSE	18	14	2.1	4	88	95	3.5
	1800			26	1005	SSW	17	13	1.9	4	93	45	0.6

30 Apr 2026

01 May 2026

02 May 2026

03 May 2026



Significant wave height (m)



MARINE WEATHER FORECAST (30 April to 07 May 2026)



PAYRA FAIRWAY (21° 22' N, 090° 6' E)

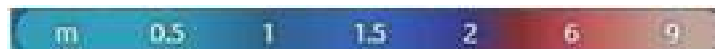
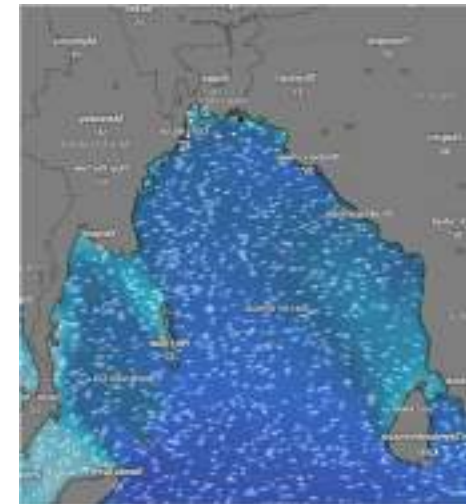
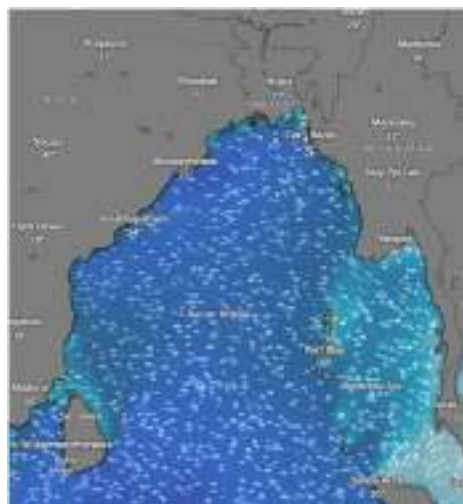
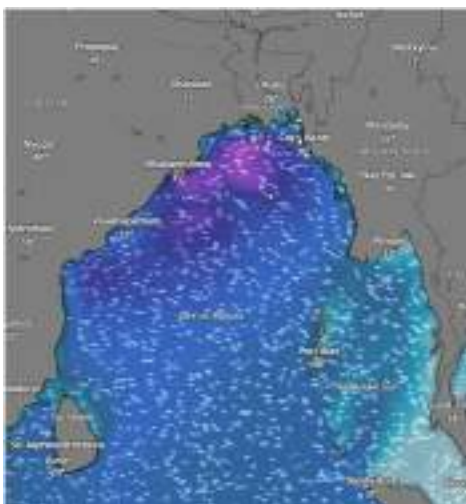
Date	Time	Air Temp (°C)		Sea Surface Temp (°C)	Baro Pressure (mbar)	Wind Direction	Wind Spd (kts)		Wae Ht (m)	Sea State	Humidity (%)	Prob of Rain (%)	Amount of Rain (mm)
		Max	Min				Gusting	Avg					
04-05-26 (Monday)	0001	29	23	25	1010	SE	28	21	1.9	4	92	50	0.5
	0600			26	1011	SW	28	19	2.0	4	95	73	0.8
	1200			28	1009	SSW	26	20	1.8	4	88	65	0.7
	1800			26	1008	SSW	27	15	1.7	4	86	17	0.0
05-05-26 (Tuesday)	0001	29	23	25	1011	SE	29	19	1.8	4	92	24	0.1
	0600			26	1013	SW	27	12	1.9	4	93	33	0.3
	1200			28	1010	SW	19	14	1.5	4	79	16	0.0
	1800			26	1009	SSW	20	10	1.5	4	86	18	0.0
06-05-26 (Wednesday)	0001	29	23	25	1009	SW	16	12	1.3	4	92	32	0.3
	0600			26	1010	SW	27	19	1.2	4	93	37	0.4
	1200			28	1008	S	14	10	1.2	4	81	18	0.0
	1800			26	1007	SW	15	11	1.1	4	85	10	0.0
06-05-26 (Wednesday)	0001	30	24	25	1008	SSW	13	09	1.1	4	92	59	0.6
	0600			26	1009	SSW	15	11	1.0	4	93	43	0.5
	1200			28	1007	SSE	10	06	1.0	4	80	15	0.0
	1800			26	1006	SW	12	08	1.0	4	87	37	0.4

04 May 2026

05 May 2026

06 May 2026

07 May 2026



Significant wave height (m)



MARINE WEATHER FORECAST (30 April to 07 May 2026)

MONGLA FAIRWAY (21° 26' N, 089° 34' E)



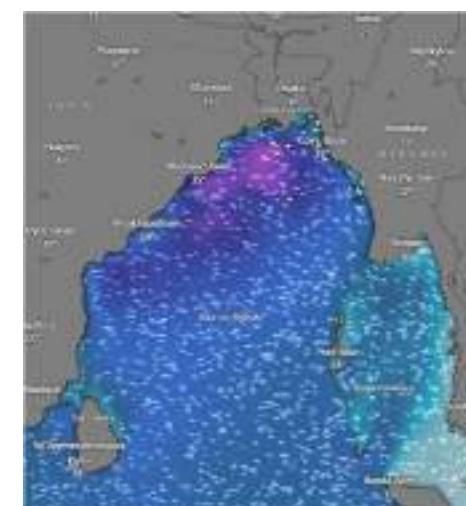
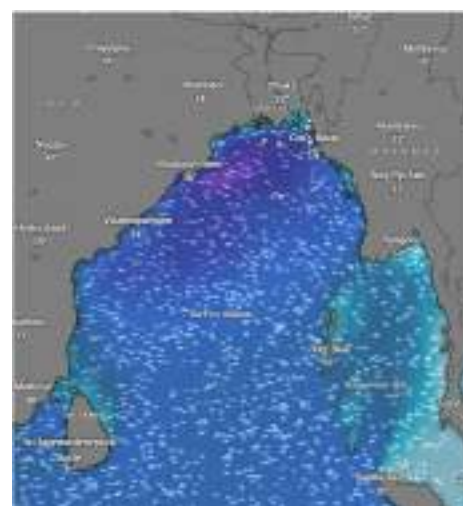
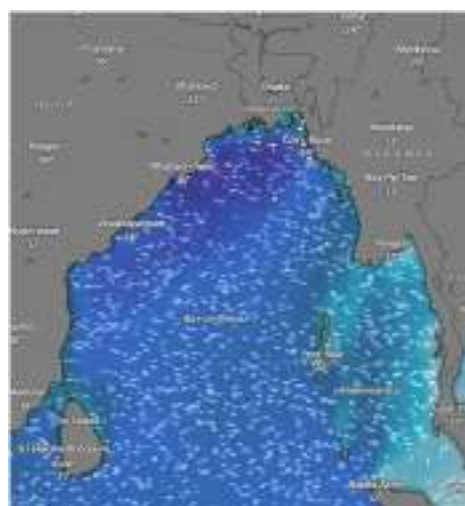
Date	Time	Air Temp (°C)		Sea Surface Temp (°C)	Baro Pressure (mbar)	Wind Direction	Wind Spd (kts)		Wave Ht (m)	Sea State	Humidity (%)	Prob of Rain (%)	Amount of Rain (mm)
		Max	Min				Gusting	Avg					
30-04-26 (Thursday)	0001	29	23	25	1009	E	14	10	1.6	4	96	55	0.5
	0600			26	1010	SSE	13	09	1.6	4	92	22	0.1
	1200			28	1008	SE	18	14	1.5	4	87	36	0.3
	1800			26	1007	SSW	24	18	1.6	4	88	58	0.6
01-05-26 (Friday)	0001	29	23	25	1009	SW	13	09	1.6	4	91	57	0.5
	0600			26	1010	SW	26	20	1.8	4	93	55	0.6
	1200			28	1008	SSW	24	18	2.1	4	85	76	0.7
	1800			26	1007	SE	22	16	1.9	4	90	22	0.4
02-05-26 (Saturday)	0001	30	24	25	1007	SSW	21	15	1.9	4	92	94	2.5
	0600			26	1008	SSW	20	15	1.8	4	94	45	0.5
	1200			28	1006	SSW	18	14	1.8	4	90	66	0.7
	1800			26	1005	SW	26	20	2.1	4	95	45	0.5
03-05-26 (Sunday)	0001	30	24	25	1007	SSE	14	10	2.1	4	90	34	0.4
	0600			26	1008	SW	26	20	2.2	4	91	92	2.5
	1200			28	1006	SSW	22	18	2.2	4	88	96	3.5
	1800			26	1005	SSW	20	15	2.0	4	93	43	0.6

30 Apr 2026

01 May 2026

02 May 2026

03 May 2026



Significant wave height (m)



MARINE WEATHER FORECAST (30 April to 07 May 2026)

MONGLA FAIRWAY (21° 26' N, 089° 34' E)



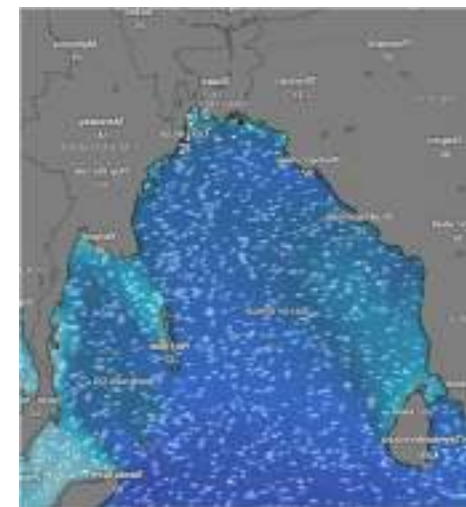
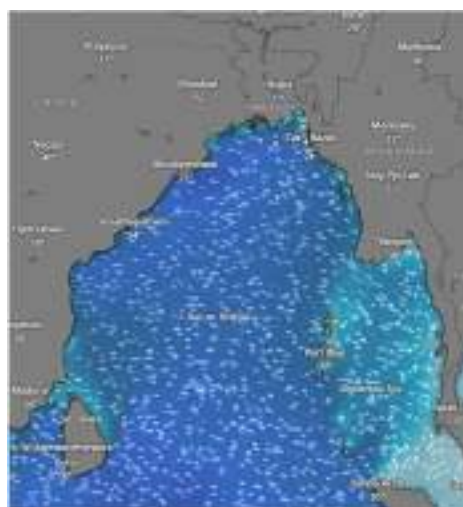
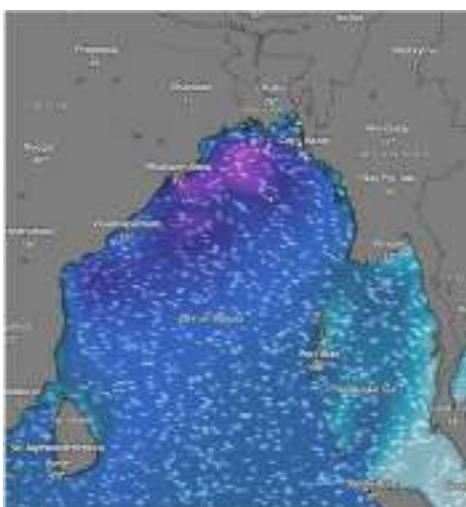
Date	Time	Air Temp (°C)		Sea Surface Temp (°C)	Baro Pressure (mbar)	Wind Direction	Wind Spd (kts)		Wave Ht (m)	Sea State	Humidity (%)	Prob of Rain (%)	Amount of Rain (mm)
		Max	Min				Gusting	Avg					
04-05-26 (Monday)	0001	29	23	25	1010	SW	26	18	2.1	4	92	52	0.5
	0600			26	1011	SSW	25	17	2.2	4	90	74	0.8
	1200			28	1009	SSW	27	19	2.3	4	87	69	0.7
	1800			26	1008	SSW	28	20	2.1	4	89	15	0.0
05-05-26 (Tuesday)	0001	29	23	25	1011	SW	28	21	2.0	4	92	24	0.1
	0600			26	1013	SSW	29	15	1.8	4	93	33	0.3
	1200			28	1010	SSW	20	14	1.7	4	79	16	0.0
	1800			26	1009	SSW	23	16	1.7	4	86	18	0.0
06-05-26 (Wednesday)	0001	29	23	25	1009	SW	14	10	1.6	4	92	32	0.3
	0600			26	1010	SSW	26	18	1.5	4	93	37	0.4
	1200			28	1008	SSW	17	13	1.3	4	81	18	0.0
	1800			26	1007	SSW	16	12	1.4	4	85	10	0.0
06-05-26 (Wednesday)	0001	30	24	25	1008	SW	14	10	1.1	3	92	59	0.6
	0600			26	1009	SW	15	11	1.1	3	93	43	0.5
	1200			28	1007	E	10	06	1.0	3	80	15	0.0
	1800			26	1006	SW	14	10	1.0	3	87	37	0.4

04 May 2026

05 May 2026

06 May 2026

07 May 2026



Significant wave height (m)



MARINE WEATHER FORECAST (30 April to 07 May 2026)

OUTER EEZ (18° 48' N, 090° 30' E)



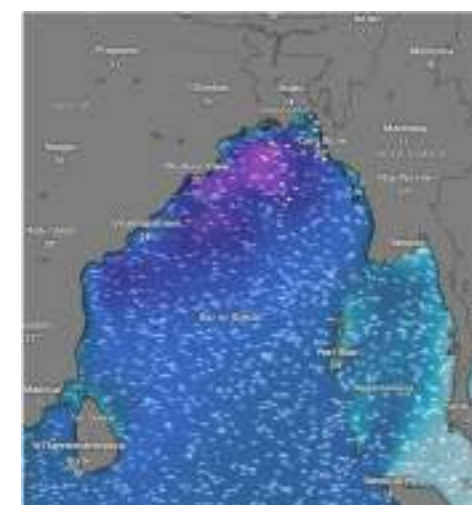
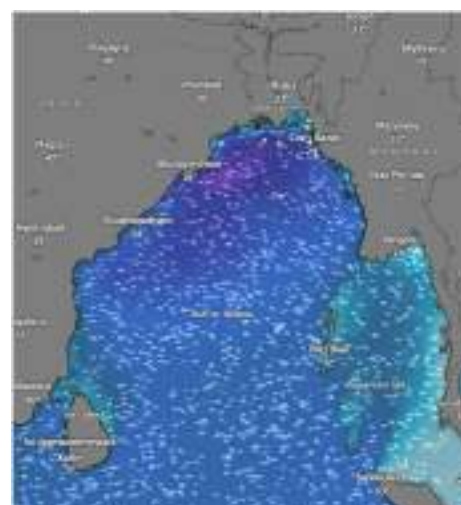
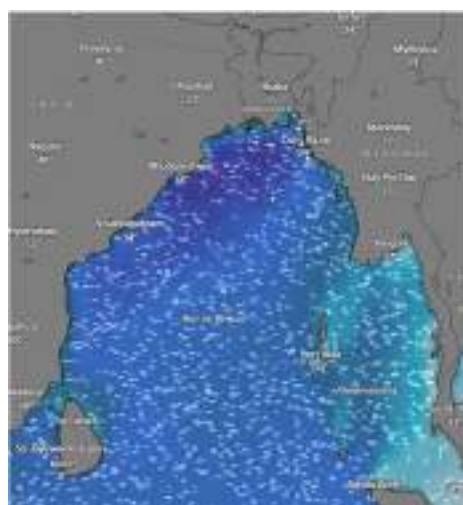
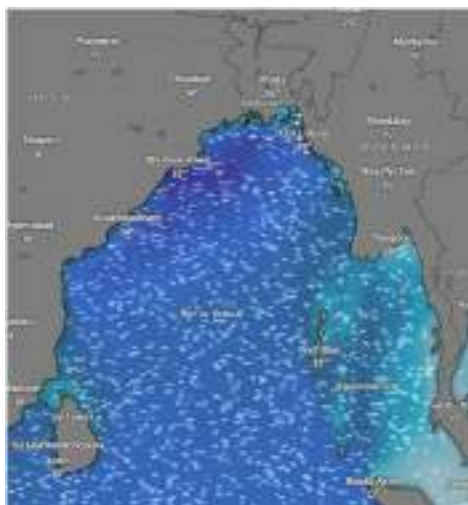
Date	Time	Air Temp (°C)		Sea Surface Temp (°C)	Baro Pressure (mbar)	Wind Direction	Wind Spd (kts)		Wave Ht (m)	Sea State	Humidity (%)	Prob of Rain (%)	Amount of Rain (mm)
		Max	Min				Gusting	Avg					
30-04-26 (Thursday)	0001	29	23	25	1009	W	16	12	1.5	4	90	50	0.5
	0600			26	1010	SW	14	10	1.5	4	92	24	0.1
	1200			28	1008	S	15	11	1.5	4	86	32	0.3
	1800			26	1007	SSW	16	11	1.4	4	89	55	0.6
01-05-26 (Friday)	0001	29	23	25	1009	SSW	18	14	1.4	4	90	58	0.5
	0600			26	1010	SSW	22	16	1.5	4	93	57	0.6
	1200			28	1008	SSW	23	17	1.5	4	78	76	0.7
	1800			26	1007	SW	28	22	1.9	4	89	25	0.4
02-05-26 (Saturday)	0001	30	24	25	1007	W	14	10	2.0	4	90	94	2.5
	0600			26	1008	SSW	22	16	1.8	4	91	45	0.5
	1200			28	1006	SW	22	17	1.8	4	74	66	0.7
	1800			26	1005	SW	18	14	1.8	4	86	45	0.5
03-05-26 (Sunday)	0001	29	23	25	1007	SW	16	12	1.9	4	90	34	0.4
	0600			26	1008	SSW	22	16	1.9	4	92	95	2.5
	1200			28	1006	SW	26	18	2.0	4	75	96	3.5
	1800			26	1005	SSW	18	14	2.0	4	87	48	0.6

30 Apr 2026

01 May 2026

02 May 2026

03 May 2026



Significant wave height (m)



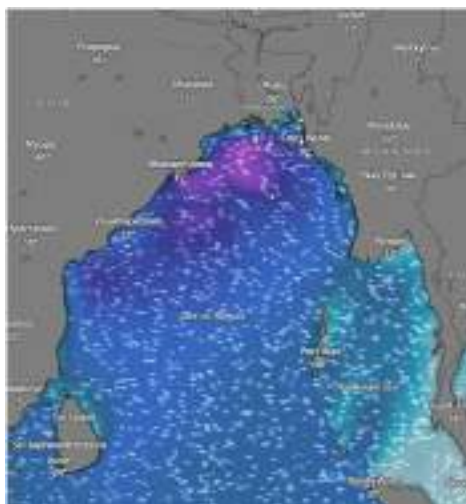
MARINE WEATHER FORECAST (30 April to 07 May 2026)

OUTER EEZ (18° 48' N, 090° 30' E)



Date	Time	Air Temp (°C)		Sea Surface Temp (°C)	Baro Pressure (mbar)	Wind Direction	Wind Spd (kts)		Wave Ht (m)	Sea State	Humidity (%)	Prob of Rain (%)	Amount of Rain (mm)
		Max	Min				Gusting	Avg					
04-05-26 (Monday)	0001	29	23	25	1010	SSW	17	08	1.8	4	89	32	0.2
	0600			26	1011	W	20	13	1.8	4	91	28	0.1
	1200			28	1009	SW	25	16	1.8	4	75	22	0.1
	1800			26	1008	SSW	23	15	1.7	4	88	25	0.1
05-05-26 (Tuesday)	0001	29	23	25	1011	SSW	22	14	1.5	4	87	31	0.2
	0600			26	1013	W	20	16	1.5	4	91	22	0.1
	1200			28	1010	SW	21	11	1.4	4	76	24	0.1
	1800			26	1009	SSW	15	10	1.4	4	88	26	0.1
06-05-26 (Wednesday)	0001	29	23	25	1009	SW	12	08	1.2	3	89	12	0.0
	0600			26	1010	SSW	13	09	1.2	3	90	24	0.1
	1200			28	1008	SW	14	10	1.1	3	74	10	0.0
	1800			26	1007	SW	13	09	1.2	3	87	20	0.0
06-05-26 (Wednesday)	0001	30	24	25	1008	SW	13	09	1.1	3	89	12	0.0
	0600			26	1009	W	11	07	1.0	3	90	24	0.1
	1200			28	1007	W	09	05	1.1	3	74	10	0.0
	1800			26	1006	SW	12	08	1.1	3	87	20	0.0

04 May 2026



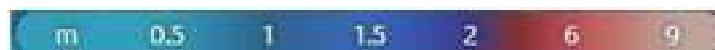
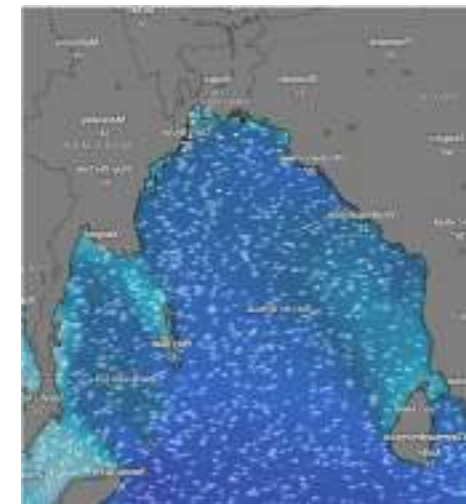
05 May 2026



06 May 2026



07 May 2026



Significant wave height (m)



PREDICTED SURFACE PRESSURE FORECAST (30 April to 06 May 2026)



30 Apr 2026



01 May 2026



02 May 2026



03 May 2026



04 May 2026



05 May 2026



06 May 2026

