



SUMMARY OF MARINE WEATHER FORECAST
COASTAL AREA OF BANGLADESH
DATE: 29 JULY TO 05 AUG 2024



Fleet forecast	Monsoon is moderate to strong over North Bay.
Wind direction, speed	South/south-easterly 14 kts, (Temporary gusting up to 20 kts).
Wave height & sea state	Wave height: 0.3 to 2.4 m (Sea state:1 to 4).
Sea surface temperature	27°C - 29°C (May remain nearly unchanged).
Baro pressure	998 - 1007 mb
Rainfall	Rain/thunder showers over Bay of Bengal & adjoining area.
Outlook for 29 July to 05 Aug 2024: Rainfall may be there within the said period.	

MARINE WEATHER FORECAST- NEAR AUTHORITY BUOY (Lat 22° 12'N, Long 091° 38'E)

DATE : 29 July to 05 Aug 2024

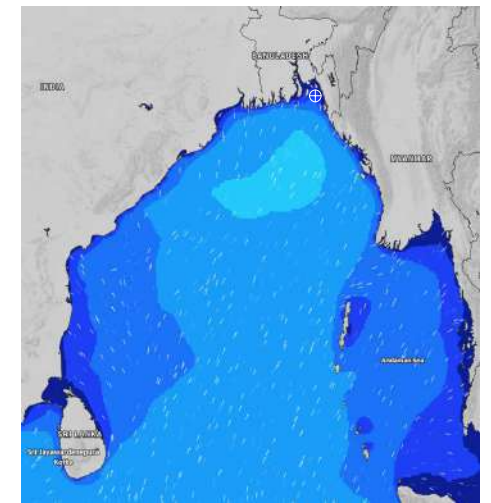
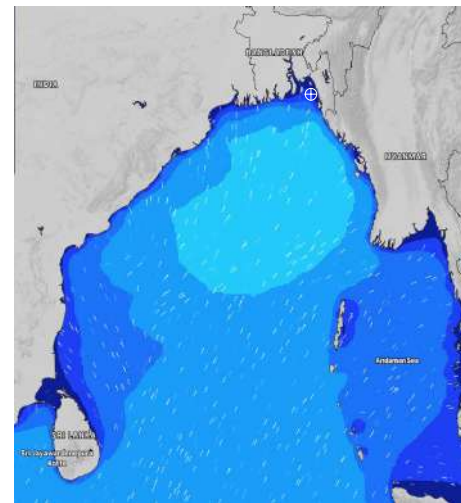
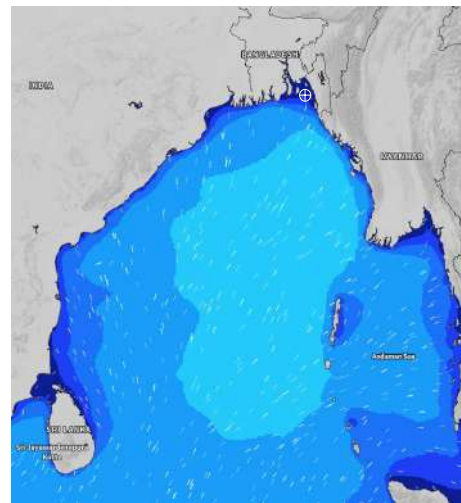
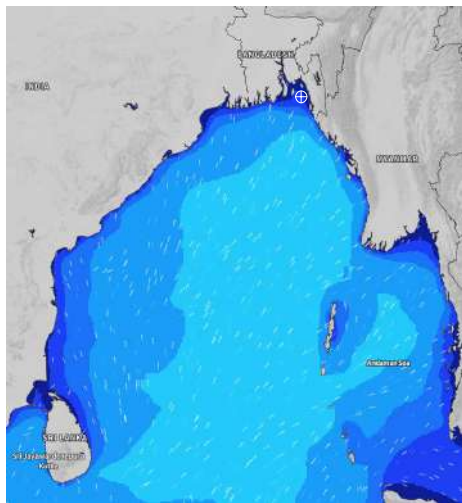
Date	Time	Max Wind Spd (kts)	Wind Direction	Wave Ht (m)	Sea State	Baro Pressure	Air Temp		Sea Surface Temp	Humidity (%)	Prob of Rain (%)	Sea State	Wave Ht (m)
							Max	Min					
29-07-24	0001	13	SSE	0.3	2	1000	30	27	28	89%	30% (0.0 mm)	0	0
	0600	15	SE	0.3	2	1000			27	92%	22% (0.0 mm)	1	0 - 0.1
	1200	16	SSE	0.4	2	1001			28	84%	90% (2.6 mm)	2	0.1 - 0.5
	1800	19	SSE	0.4	2	1000			28	89%	62% (0.6 mm)	3	0.5 - 1.25
30-07-24	0001	16	SSE	0.4	2	1003	30	27	27	88%	70% (0.7 mm)	4	1.25 - 2.5
	0600	16	SSE	0.4	2	1002			27	91%	84% (0.9 mm)	5	2.5 - 4.0
	1200	17	S	0.4	2	1002			28	81%	85% (0.9 mm)	6	4.0 - 6.0
	1800	16	SSE	0.4	2	1002			28	78%	54% (0.5 mm)	7	6.0 - 9.0
31-07-24	0001	15	SSE	0.4	2	1004	30	27	27	90%	64% (0.6 mm)	8	9.0 - 14.0
	0600	16	SE	0.4	2	1003			27	93%	79% (1.8 mm)	9	Over 14.0
	1200	17	SSE	0.4	2	1004			28	86%	88% (1.2 mm)		
	1800	16	SE	0.4	2	1002			28	81%	58% (0.6 mm)		
01-08-24	0001	16	SE	0.4	2	1004	30	27	27	90%	75% (1.5 mm)		
	0600	11	SE	0.3	2	1003			27	93%	95% (2.7 mm)		
	1200	13	SE	0.3	2	1004			28	88%	97% (1.9 mm)		
	1800	14	SSE	0.3	2	1003			28	78%	78% (1.1 mm)		

29 July 24 Mon (Probability 98%)

30 July 24 Tue (Probability 95%)

31 July 24 Wed (Probability 90%)

01 Aug 24 Thu (Probability 80%)



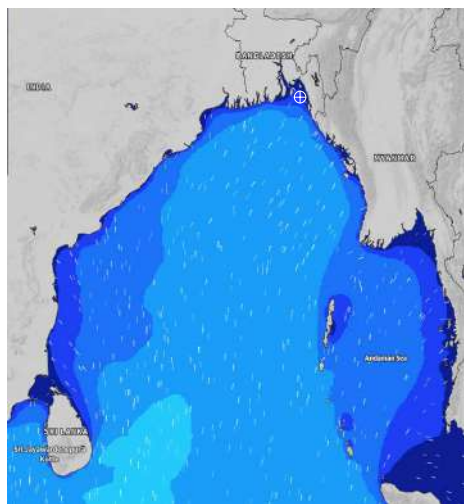
Significant wave height (m)

MARINE WEATHER FORECAST- NEAR AUTHORITY BUOY (Lat 22° 12'N, Long 091° 38'E)

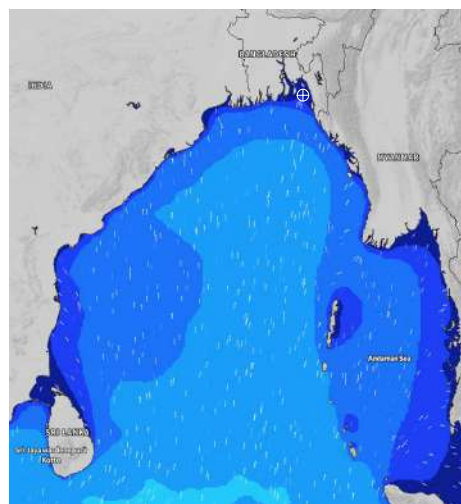
DATE : 29 July to 05 Aug 2024

Date	Time	Max Wind Spd (kts)	Wind Direction	Wave Ht (m)	Sea State	Baro Pressure	Air Temp		Sea Surface Temp	Humidity (%)	Prob of Rain (%)	Sea State	Wave Ht (m)
							Max	Min					
02-08-24	0001	17	SE	0.4	2	1002	29	26	27	90%	97% (2.5 mm)	0	0
	0600	12	SSE	0.3	2	1000			26	92%	94% (2.6 mm)	1	0 - 0.1
	1200	14	SE	0.4	2	1000			27	88%	92% (2.4 mm)	2	0.1 - 0.5
	1800	13	S	0.3	2	1000			27	89%	88% (1.5 mm)	3	0.5 - 1.25
03-08-24	0001	15	SSE	0.4	2	1003	29	26	27	90%	87% (1.2 mm)	4	1.25 - 2.5
	0600	13	SSE	0.3	2	1002			26	94%	85% (0.9 mm)	5	2.5 - 4.0
	1200	15	SE	0.3	2	1003			27	82%	81% (0.9 mm)	6	4.0 - 6.0
	1800	16	SE	0.4	2	1003			26	90%	63% (0.7 mm)	7	6.0 - 9.0
04-08-24	0001	17	SSE	0.4	2	1006	29	26	27	89%	78% (0.8 mm)	8	9.0 - 14.0
	0600	17	SE	0.4	2	1006			26	92%	63% (0.7 mm)	9	Over 14.0
	1200	15	SSE	0.4	2	1007			27	86%	64% (0.6 mm)		
	1800	15	SSE	0.4	2	1005			26	89%	50% (0.5 mm)		
05-08-24	0001	15	SSE	0.3	2	1006	29	26	27	89%	68% (0.7 mm)		
	0600	13	SE	0.3	2	1006			26	90%	66% (0.6 mm)		
	1200	14	SSE	0.3	2	1007			27	87%	63% (0.6 mm)		
	1800	12	SE	0.3	2	1005			26	89%	47% (0.5 mm)		

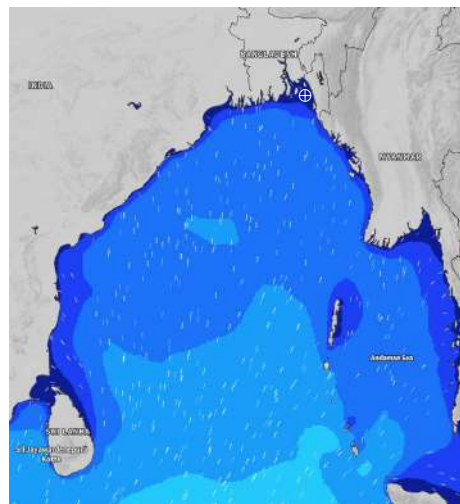
02 Aug 24 Fri (Probability 70%)



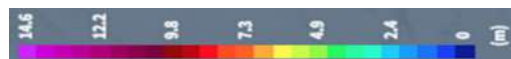
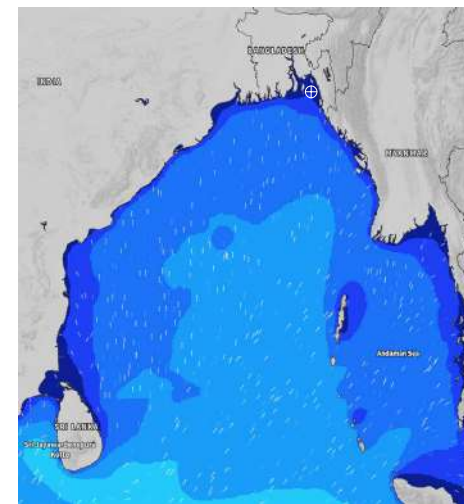
03 Aug 24 Sat (Probability 60%)



04 Aug 24 Sun (Probability 50%)



05 Aug 24 Mon (Probability 50%)



Significant wave height (m)

MARINE WEATHER FORECAST- 20 NM WEST OF ELEPHANT POINT (Lat 21° 10'N, Long 091° 42'E)

DATE : 29 July to 05 Aug 2024

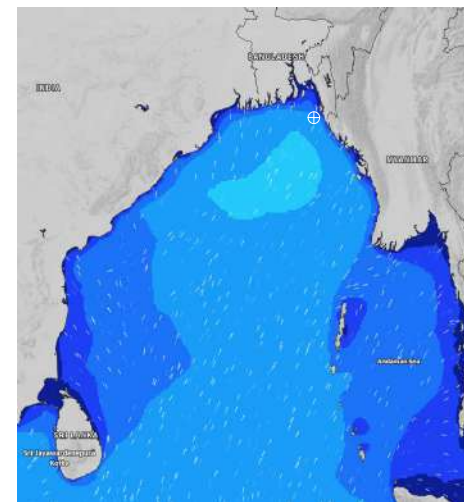
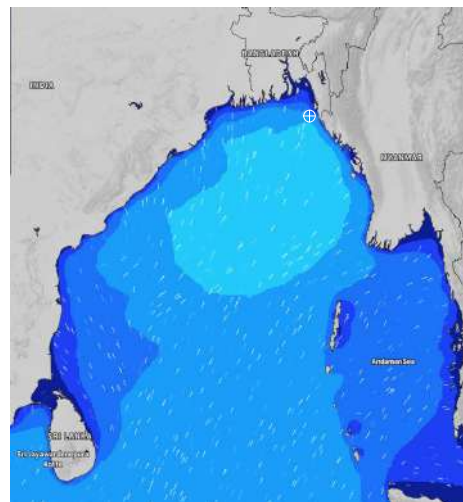
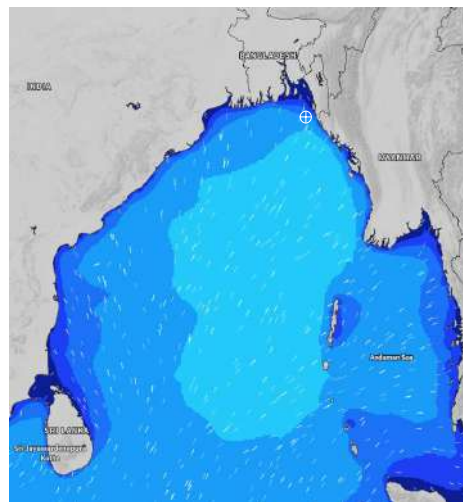
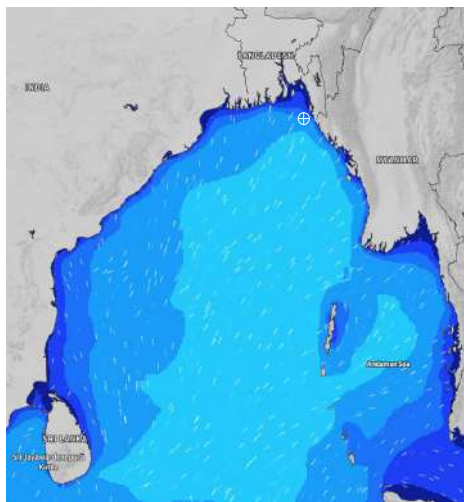
Date	Time	Max Wind Spd (kts)	Wind Direction	Wave Ht (m)	Sea State	Baro Pressure	Air Temp		Sea Surface Temp	Humidity (%)	Prob of Rain (%)	Sea State	Wave Ht (m)
							Max	Min					
29-07-24	0001	15	SE	1.8	4	1000	30	27	28	89%	32% (0.1 mm)	0	0
	0600	17	S	1.9	4	1000			27	93%	24% (0.0 mm)	1	0 - 0.1
	1200	15	S	1.9	4	1001			28	88%	97% (1.4 mm)	2	0.1 - 0.5
	1800	17	SSE	1.9	4	1000			28	89%	72% (0.7 mm)	3	0.5 - 1.25
30-07-24	0001	16	SSE	1.8	4	1003	30	27	28	90%	73% (0.7 mm)	4	1.25 - 2.5
	0600	13	SSE	1.7	4	1002			27	93%	97% (2.4 mm)	5	2.5 - 4.0
	1200	13	S	1.7	4	1003			28	87%	76% (0.8 mm)	6	4.0 - 6.0
	1800	15	S	1.7	4	1002			28	89%	70% (0.7 mm)	7	6.0 - 9.0
31-07-24	0001	17	SSE	1.9	4	1004	30	27	27	90%	89% (0.9 mm)	8	9.0 - 14.0
	0600	17	SSE	1.8	4	1003			27	94%	96% (1.9 mm)	9	Over 14.0
	1200	16	SSE	1.8	4	1004			28	86%	94% (1.8 mm)		
	1800	17	SSE	1.8	4	1003			27	88%	62% (0.6 mm)		
01-08-24	0001	17	SE	1.8	4	1004	30	27	27	90%	93% (1.5 mm)		
	0600	16	SE	1.7	4	1002			27	95%	98% (2.4 mm)		
	1200	13	SSE	1.7	4	1004			28	85%	98% (2.3 mm)		
	1800	14	SSE	1.7	4	1002			27	89%	86% (0.9 mm)		

29 July 24 Mon (Probability 98%)

30 July 24 Tue (Probability 95%)

31 July 24 Wed (Probability 90%)

01 Aug 24 Thu (Probability 80%)



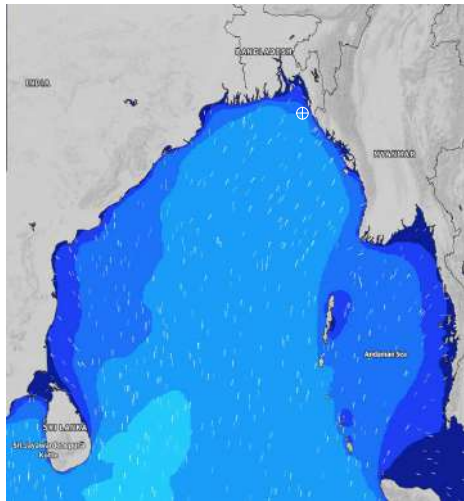
Significant wave height (m)

MARINE WEATHER FORECAST- 20 NM WEST OF ELEPHANT POINT (Lat 21° 10'N, Long 091° 42' E)

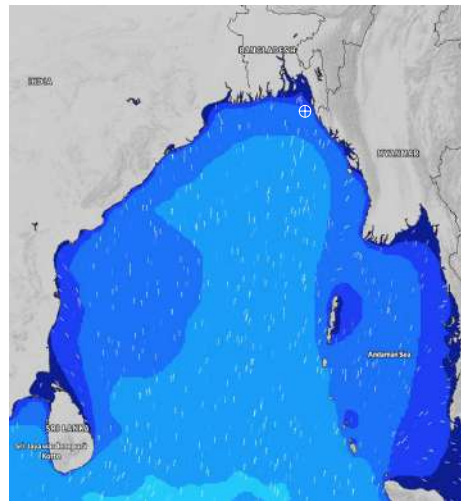
DATE : 29 July to 05 Aug 2024

Date	Time	Max Wind Spd (kts)	Wind Direction	Wave Ht (m)	Sea State	Baro Pressure	Air Temp		Sea Surface Temp	Humidity (%)	Prob of Rain (%)	Sea State	Wave Ht (m)
							Max	Min					
02-08-24	0001	15	SSW	1.8	4	1002	30	26	27	91%	87% (1.9 mm)	0	0
	0600	17	SSW	1.9	4	1001			26	93%	85% (0.9 mm)	1	0 - 0.1
	1200	18	SSW	1.9	4	1001			27	87%	82% (1.0 mm)	2	0.1 - 0.5
	1800	14	SSW	1.9	4	1000			28	89%	77% (0.8 mm)	3	0.5 - 1.25
03-08-24	0001	12	SSW	1.8	4	1003	29	26	28	90%	78% (0.8 mm)	4	1.25 - 2.5
	0600	13	SSW	1.8	4	1002			27	93%	75% (0.8 mm)	5	2.5 - 4.0
	1200	13	SSW	1.8	4	1003			28	81%	73% (1.8 mm)	6	4.0 - 6.0
	1800	14	S	1.8	4	1004			28	89%	58% (0.6 mm)	7	6.0 - 9.0
04-08-24	0001	17	SSE	1.7	4	1006	29	26	27	90%	58% (1.6 mm)	8	9.0 - 14.0
	0600	19	SE	1.7	4	1006			27	94%	66% (0.7 mm)	9	Over 14.0
	1200	19	SE	1.7	3	1007			28	86%	63% (0.6 mm)		
	1800	16	SSE	1.6	3	1005			28	89%	56% (0.7 mm)		
05-08-24	0001	14	SSE	1.4	4	1006	29	26	28	90%	59% (1.6 mm)		
	0600	12	SSE	1.3	4	1006			27	94%	67% (0.7 mm)		
	1200	13	SSE	1.3	3	1007			28	86%	68% (0.7 mm)		
	1800	14	SSE	1.3	3	1005			28	89%	60% (0.6 mm)		

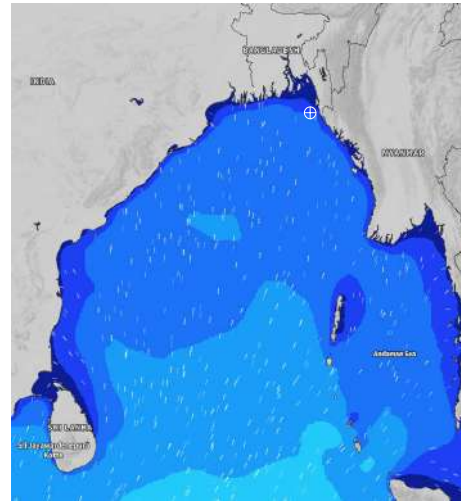
02 Aug 24 Fri (Probability 70%)



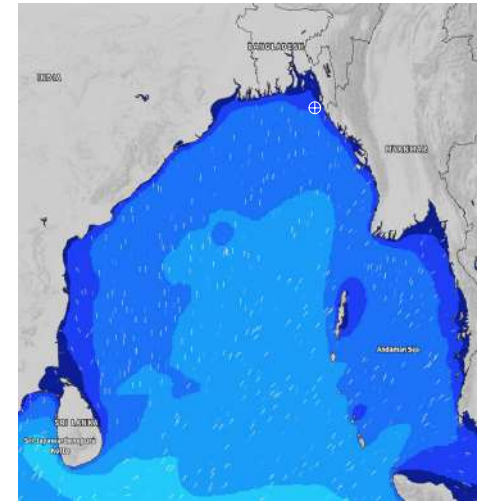
03 Aug 24 Sat (Probability 60%)



04 Aug 24 Sun (Probability 50%)



05 Aug 24 Mon (Probability 50%)



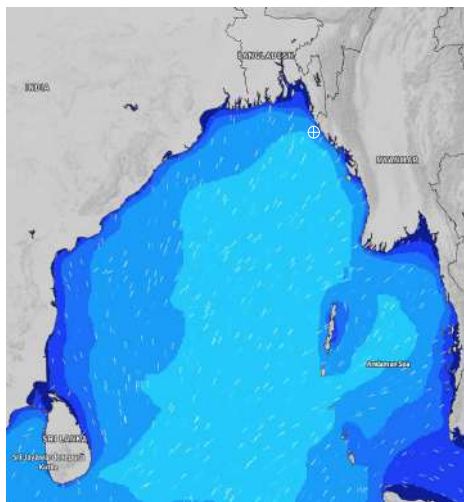
Significant wave height (m)

MARINE WEATHER FORECAST- 15 NM WEST OF ST. MARTIN'S LIGHT HOUSE (Lat 20° 37'N, Long 092° 03'E)

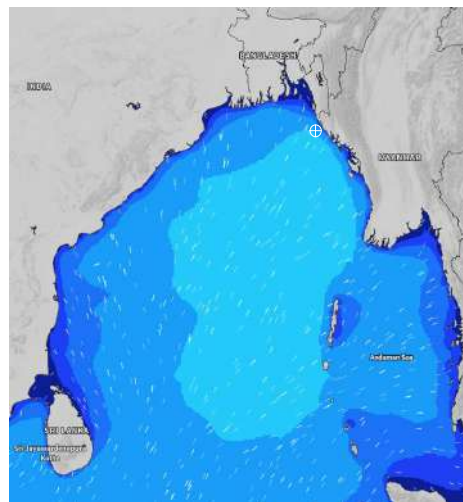
DATE : 29 July to 05 Aug 2024

Date	Time	Max Wind Spd (kts)	Wind Direction	Wave Ht (m)	Sea State	Baro Pressure	Air Temp		Sea Surface Temp	Humidity (%)	Prob of Rain(%)	Sea State	Wave Ht (m)
							Max	Min					
29-07-24	0001	13	SSW	2.4	4	1001	30	27	28	88%	32% (0.2 mm)	0	0
	0600	18	SSW	2.4	4	1000			27	90%	24% (0.1 mm)	1	0 - 0.1
	1200	16	SSW	2.4	4	1002			28	72%	76% (0.8 mm)	2	0.1 - 0.5
	1800	13	S	2.2	4	1000			28	84%	41% (0.4 mm)	3	0.5 - 1.25
30-07-24	0001	14	S	2.1	4	1003	30	27	28	90%	79% (0.8 mm)	4	1.25 - 2.5
	0600	13	SSW	2.1	4	1002			27	92%	46% (0.5 mm)	5	2.5 - 4.0
	1200	11	SSW	2.1	4	1004			28	82%	75% (0.8 mm)	6	4.0 - 6.0
	1800	16	SSW	2.1	4	1002			28	88%	65% (0.6 mm)	7	6.0 - 9.0
31-07-24	0001	17	S	2.1	4	1005	30	27	28	89%	83% (0.8 mm)	8	9.0 - 14.0
	0600	14	S	2.1	4	1003			27	91%	92% (1.6 mm)	9	Over 14.0
	1200	15	S	2.1	4	1005			28	79%	95% (1.7 mm)		
	1800	13	S	2.0	4	1003			28	81%	86% (0.9 mm)		
01-08-24	0001	14	SSE	2.1	4	1005	30	27	28	90%	83% (0.8 mm)		
	0600	10	SSW	2.0	4	1002			27	92%	94% (1.6 mm)		
	1200	14	SSW	2.0	4	1004			28	84%	98% (1.8 mm)		
	1800	13	SSW	2.0	4	1002			28	88%	83% (0.9 mm)		

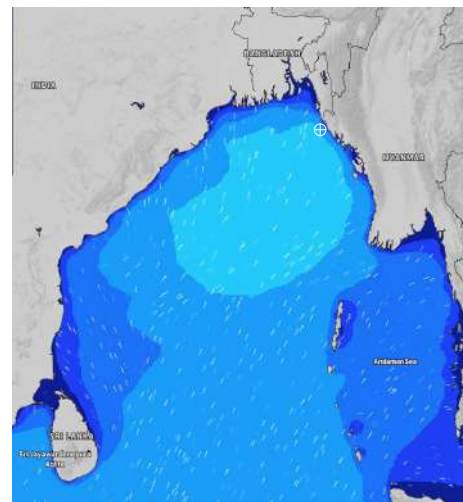
29 July 24 Mon (Probability 98%)



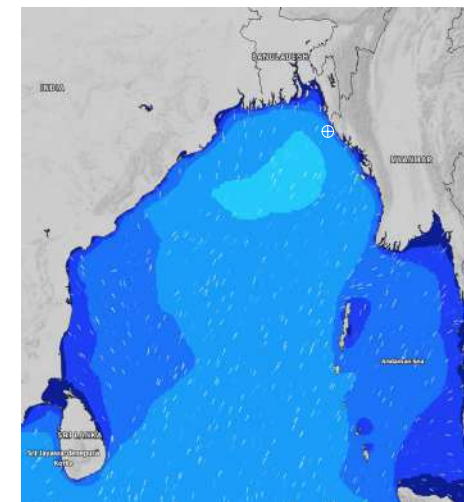
30 July 24 Tue (Probability 95%)



31 July 24 Wed (Probability 90%)



01 Aug 24 Thu (Probability 80%)



Significant wave height (m)

MARINE WEATHER FORECAST- 15 NM WEST OF ST. MARTIN'S LIGHT HOUSE (Lat 20° 37'N, Long 092° 03' E)

DATE : 29 July to 05 Aug 2024

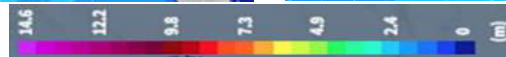
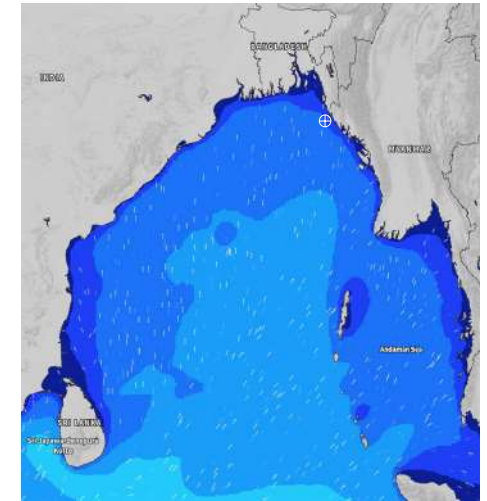
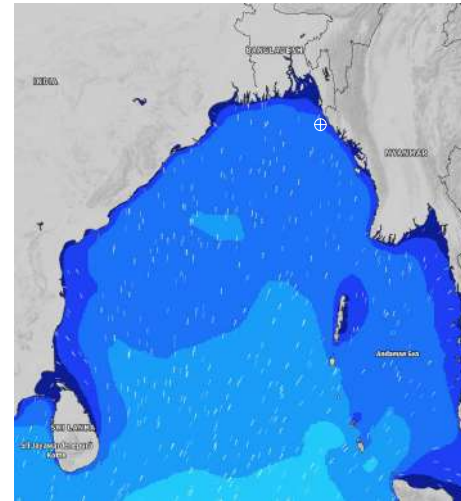
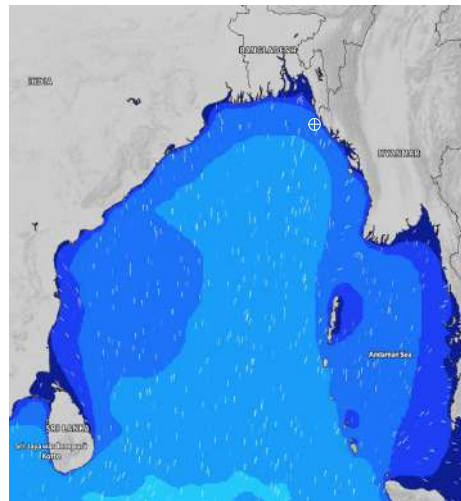
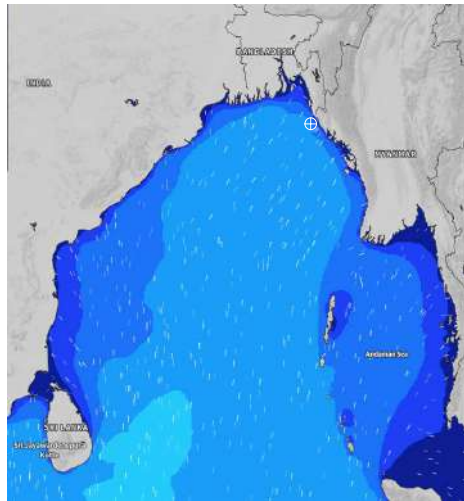
Date	Time	Max Wind Spd (kts)	Wind Direction	Wave Ht (m)	Sea State	Baro Pressure	Air Temp		Sea Surface Temp	Humidity (%)	Prob of Rain (%)	Sea State	Wave Ht (m)
							Max	Min					
02-08-24	0001	17	SSW	2.4	4	1004	30	26	28	91%	84% (0.9 mm)	0	0
	0600	18	SSW	2.4	4	1001			27	93%	86% (0.9 mm)	1	0 - 0.1
	1200	20	SSW	2.4	4	1002			28	86%	90% (1.5 mm)	2	0.1 - 0.5
	1800	16	SSW	2.4	4	1001			28	89%	89% (1.2 mm)	3	0.5 - 1.25
03-08-24	0001	16	SSW	2.4	4	1004	30	26	28	90%	76% (0.8 mm)	4	1.25 - 2.5
	0600	17	SW	2.4	4	1002			27	94%	68% (0.7 mm)	5	2.5 - 4.0
	1200	15	SW	2.3	4	1005			28	84%	95% (1.8 mm)	6	4.0 - 6.0
	1800	12	SSW	2.2	4	1003			28	89%	88% (1.3 mm)	7	6.0 - 9.0
04-08-24	0001	13	S	2.0	4	1007	29	26	28	90%	58% (0.6 mm)	8	9.0 - 14.0
	0600	12	SSE	1.8	4	1005			27	92%	66% (0.7 mm)	9	Over 14.0
	1200	16	SSE	1.8	4	1008			28	84%	69% (0.7 mm)		
	1800	12	SE	1.7	4	1005			28	86%	44% (0.4 mm)		
05-08-24	0001	10	SSE	1.6	4	1007	29	26	28	92%	80% (0.9 mm)		
	0600	9	S	1.5	4	1005			27	94%	68% (0.7 mm)		
	1200	8	S	1.5	4	1007			28	87%	65% (0.6 mm)		
	1800	10	SSE	1.6	4	1005			28	89%	42% (0.4 mm)		

02 Aug 24 Fri (Probability 70%)

03 Aug 24 Sat (Probability 60%)

04 Aug 24 Sun (Probability 50%)

05 Aug 24 Mon (Probability 50%)



Significant wave height (m)

MARINE WEATHER FORECAST- 40 NM ESE OF PAYRA FAIRWAY (Lat 21° 07'N, Long 090° 45'E)

DATE : 29 July to 05 Aug 2024

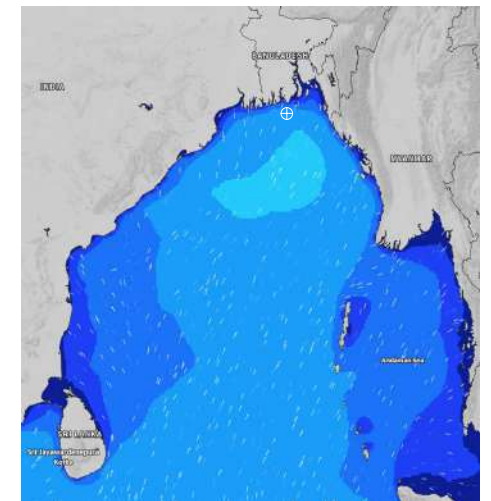
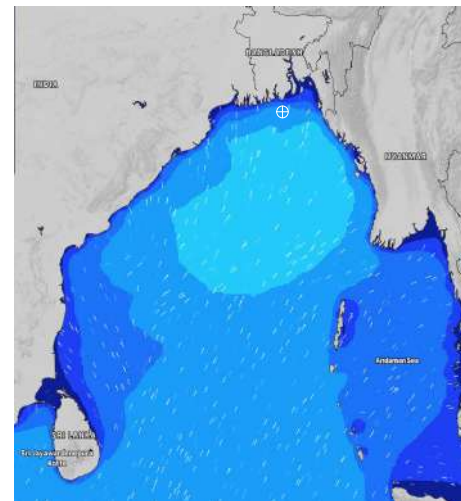
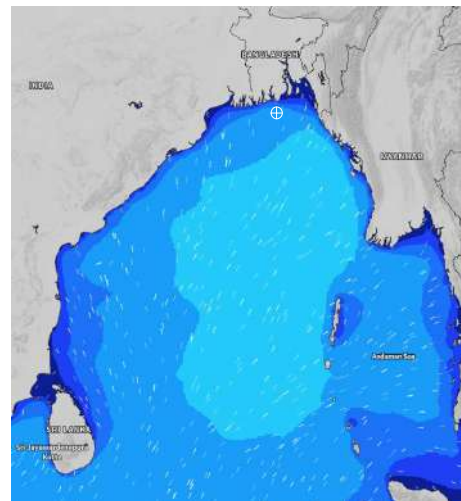
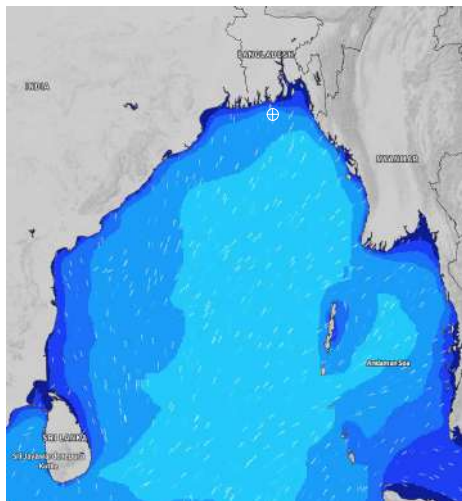
Date	Time	Max Wind Spd (kts)	Wind Direction	Wave Ht (m)	Sea State	Baro Pressure	Air Temp		Sea Surface Temp	Humidity (%)	Prob of Rain (%)	Sea State	Wave Ht (m)
							Max	Min					
29-07-24	0001	12	S	2.3	4	999	31	27	28	88%	23% (0.0 mm)	0	0
	0600	14	SSW	2.3	4	999			28	90%	24% (0.1 mm)	1	0 - 0.1
	1200	19	SSW	2.4	4	1001			29	78%	78% (0.8 mm)	2	0.1 - 0.5
	1800	16	S	2.4	4	999			28	86%	32% (0.2 mm)	3	0.5 - 1.25
30-07-24	0001	16	S	2.2	4	1002	31	27	28	91%	70% (0.7 mm)	4	1.25 - 2.5
	0600	17	SW	2.3	4	1001			28	92%	69% (0.7 mm)	5	2.5 - 4.0
	1200	15	SSW	2.2	4	1002			29	77%	66% (0.7 mm)	6	4.0 - 6.0
	1800	18	S	2.2	4	1001			28	88%	43% (0.4 mm)	7	6.0 - 9.0
31-07-24	0001	15	SSW	2.1	4	1003	30	27	28	91%	67% (0.7 mm)	8	9.0 - 14.0
	0600	13	SSW	2.1	4	1002			28	93%	90% (1.6 mm)	9	Over 14.0
	1200	13	SSW	2.1	4	1003			29	81%	90% (1.5 mm)		
	1800	10	SSE	2.0	4	1001			28	89%	40% (0.4 mm)		
01-08-24	0001	11	S	2.1	4	1003	30	27	28	91%	77% (0.8 mm)		
	0600	7	SW	2.0	4	1001			28	93%	93% (1.8 mm)		
	1200	8	S	2.0	4	1002			29	85%	98% (1.9 mm)		
	1800	10	SSW	2.0	4	1001			28	89%	58% (0.6 mm)		

29 July 24 Mon (Probability 98%)

30 July 24 Tue (Probability 95%)

31 July 24 Wed (Probability 90%)

01 Aug 24 Thu (Probability 80%)



Significant wave height (m)

MARINE WEATHER FORECAST- 40 NM ESE OF PAYRA FAIRWAY (Lat 21° 07' N, Long 090° 45' E)

DATE : 29 July to 05 Aug 2024

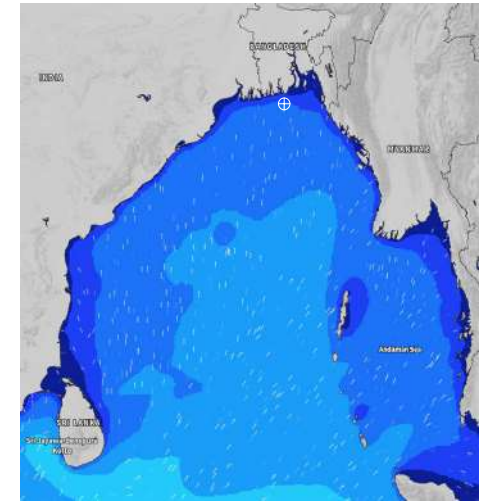
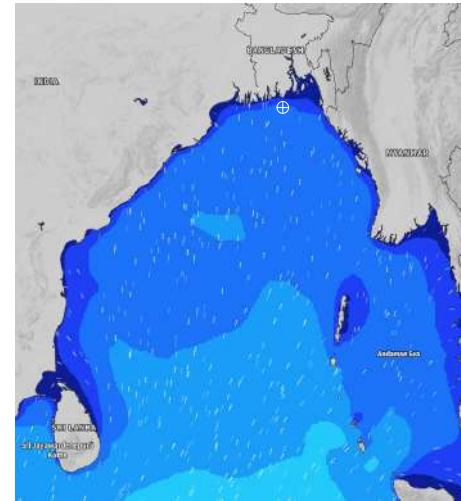
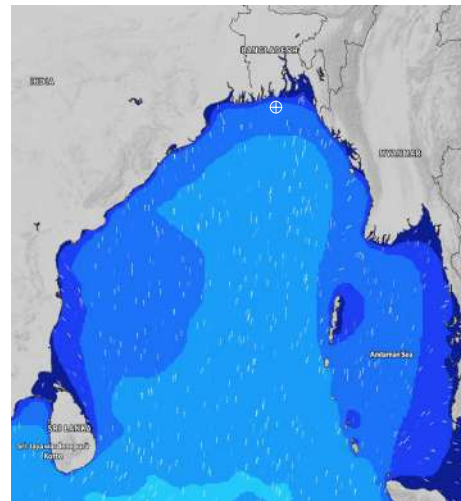
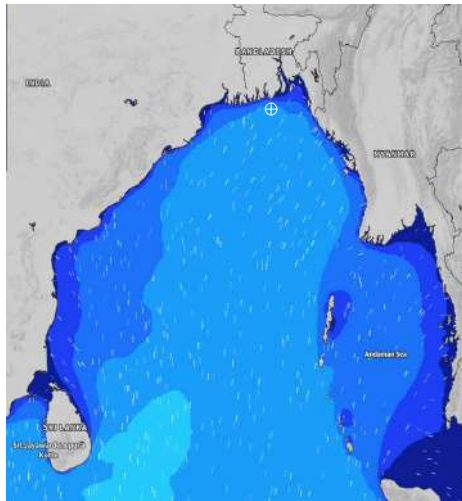
Date	Time	Max Wind Spd (kts)	Wind Direction	Wave Ht (m)	Sea State	Baro Pressure	Air Temp		Sea Surface Temp	Humidity (%)	Prob of Rain (%)	Sea State	Wave Ht (m)
							Max	Min					
02-08-24	0001	17	SSW	2.3	4	1001	30	27	28	91%	78% (0.9 mm)	0	0
	0600	17	SSW	2.3	4	1000			27	94%	93% (1.5 mm)	1	0 - 0.1
	1200	20	WSW	2.4	4	1001			28	82%	92% (1.5 mm)	2	0.1 - 0.5
	1800	18	SW	2.4	4	1000			28	89%	58% (0.6 mm)	3	0.5 - 1.25
03-08-24	0001	17	SW	2.4	4	1002	30	27	28	89%	83% (0.8 mm)	4	1.25 - 2.5
	0600	19	SW	2.4	4	1001			27	93%	84% (0.8 mm)	5	2.5 - 4.0
	1200	18	SW	2.4	4	1003			29	84%	83% (0.8 mm)	6	4.0 - 6.0
	1800	16	SSW	2.3	4	1003			29	88%	47% (0.5 mm)	7	6.0 - 9.0
04-08-24	0001	16	SSW	2.1	4	1005	30	27	28	90%	68% (0.7 mm)	8	9.0 - 14.0
	0600	15	SSW	2.0	4	1005			27	92%	76% (0.8 mm)	9	Over 14.0
	1200	13	SSW	1.9	4	1006			29	87%	73% (1.7 mm)		
	1800	12	S	1.9	4	1004			28	89%	42% (0.4 mm)		
05-08-24	0001	11	S	1.7	4	1005	30	27	28	90%	68% (0.7 mm)		
	0600	11	SSW	1.6	4	1004			27	92%	60% (0.6 mm)		
	1200	12	SW	1.6	4	1005			28	87%	78% (0.8 mm)		
	1800	10	SSW	1.6	4	1004			29	89%	22% (0.0 mm)		

02 Aug 24 Fri (Probability 70%)

03 Aug 24 Sat (Probability 60%)

04 Aug 24 Sun (Probability 50%)

05 Aug 24 Mon (Probability 50%)



Significant wave height (m)

MARINE WEATHER FORECAST- 10 NM SOUTH OF MONGLA FAIRWAY (Lat 21° 16'N, Long 089° 34'E)

DATE : 29 July to 05 Aug 2024

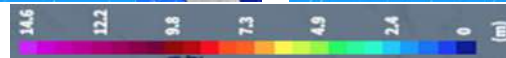
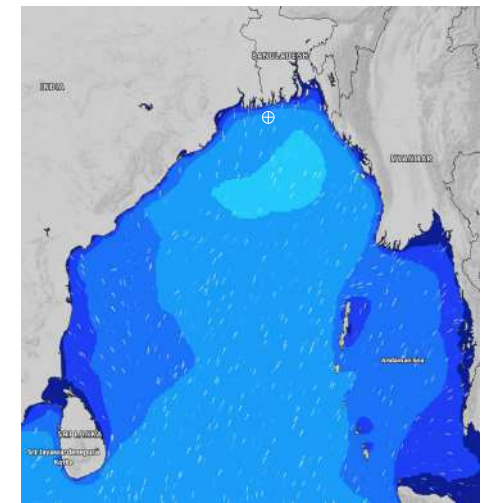
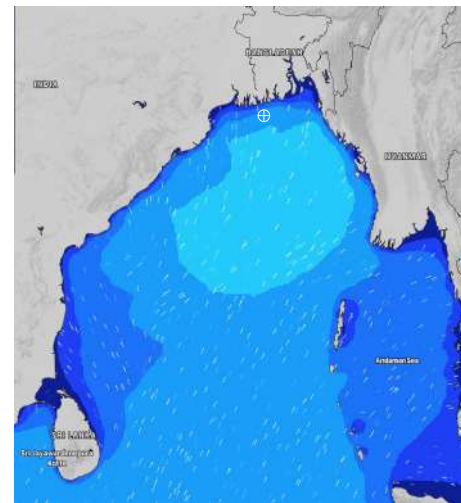
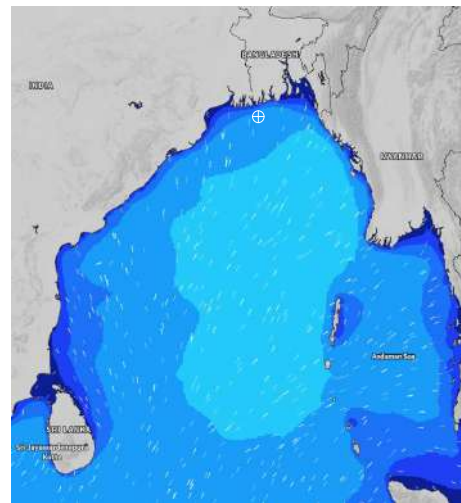
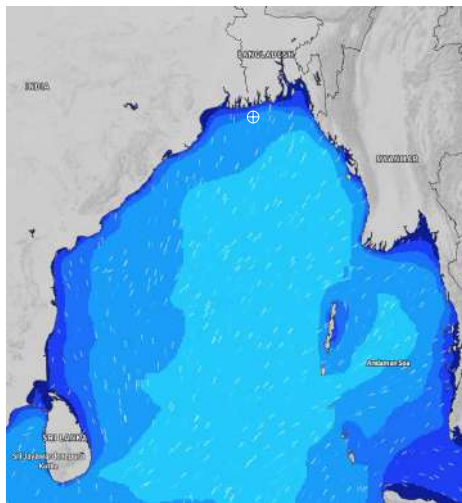
Date	Time	Max Wind Spd (kts)	Wind Direction	Wave Ht (m)	Sea State	Baro Pressure	Air Temp		Sea Surface Temp	Humidity (%)	Prob of Rain (%)	Sea State	Wave Ht (m)
							Max	Min					
29-07-24	0001	9	SW	2.2	4	999	31	27	28	87%	28% (0.1 mm)	0	0
	0600	7	SSW	2.1	4	998			28	91%	22% (0.0 mm)	1	0 - 0.1
	1200	17	SW	2.2	4	999			29	76%	95% (1.8 mm)	2	0.1 - 0.5
	1800	15	S	2.2	4	998			29	84%	24% (0.0 mm)	3	0.5 - 1.25
30-07-24	0001	12	SSW	2.1	4	1001	31	27	28	89%	24% (0.1 mm)	4	1.25 - 2.5
	0600	16	SW	2.2	4	1000			28	90%	34% (0.2 mm)	5	2.5 - 4.0
	1200	14	SW	2.2	4	1001			29	74%	75% (0.8 mm)	6	4.0 - 6.0
	1800	12	S	2.0	4	1000			29	88%	24% (0.1 mm)	7	6.0 - 9.0
31-07-24	0001	13	SSW	2.1	4	1002	30	27	28	90%	24% (0.1 mm)	8	9.0 - 14.0
	0600	12	SSW	2.1	4	1001			28	92%	86% (0.9 mm)	9	Over 14.0
	1200	9	SSW	2.0	4	1002			29	76%	74% (0.7 mm)		
	1800	7	S	2.0	4	1001			29	88%	24% (0.1 mm)		
01-08-24	0001	12	S	1.9	4	1002	30	27	28	90%	49% (0.5 mm)		
	0600	8	SSE	1.8	4	1001			28	93%	86% (0.8 mm)		
	1200	10	SE	1.8	4	1002			29	79%	96% (1.6 mm)		
	1800	11	SSE	1.8	4	1001			29	87%	41% (0.4 mm)		

29 July 24 Mon (Probability 98%)

30 July 24 Tue (Probability 95%)

31 July 24 Wed (Probability 90%)

01 Aug 24 Thu (Probability 80%)



Significant wave height (m)

MARINE WEATHER FORECAST- 10 NM SOUTH OF MONGLA FAIRWAY (Lat 21° 16'N, Long 089° 34'E)

DATE : 29 July to 05 Aug 2024

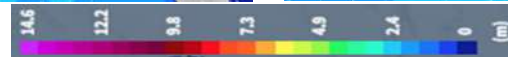
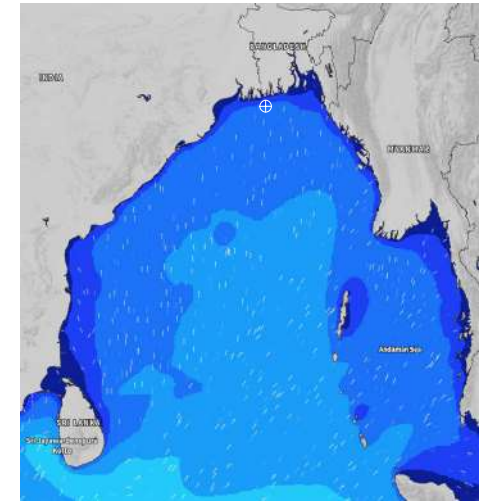
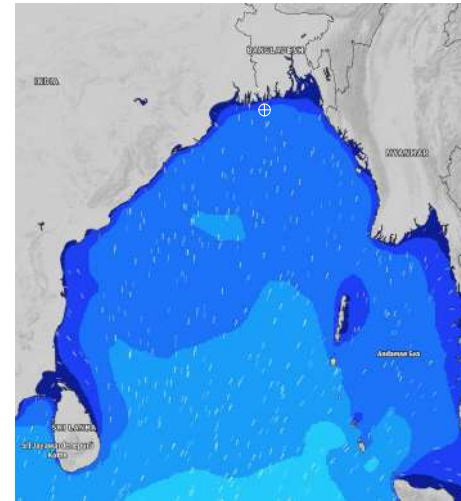
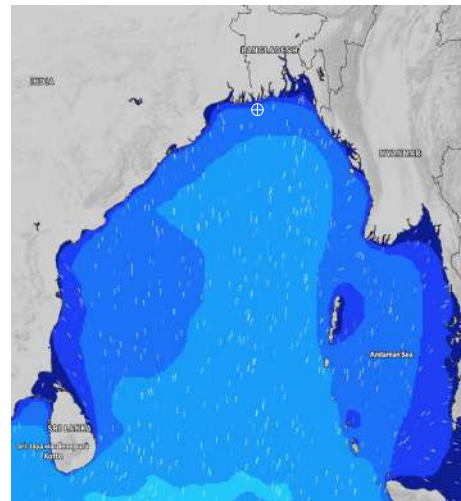
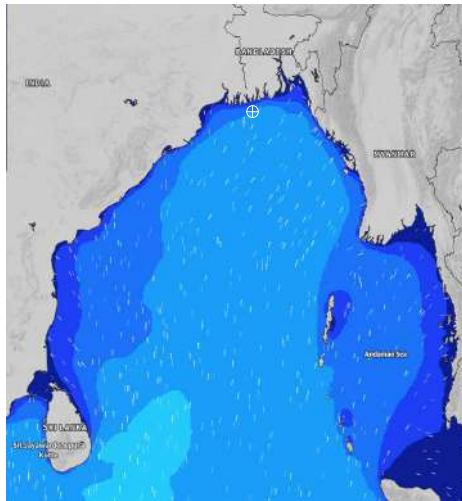
Date	Time	Max Wind Spd (kts)	Wind Direction	Wave Ht (m)	Sea State	Baro Pressure	Air Temp		Sea Surface Temp	Humidity (%)	Prob of Rain (%)	Sea State	Wave Ht (m)
							Max	Min					
02-08-24	0001	17	SSW	2.1	4	1000	30	27	28	89%	89% (1.2 mm)	0	0
	0600	16	WSW	2.0	4	998			27	92%	93% (1.6 mm)	1	0 - 0.1
	1200	18	WSW	2.3	4	999			28	87%	92% (1.2 mm)	2	0.1 - 0.5
	1800	20	SW	2.4	4	999			28	88%	32% (0.1 mm)	3	0.5 - 1.25
03-08-24	0001	18	SW	2.2	4	1001	30	27	28	90%	73% (0.8 mm)	4	1.25 - 2.5
	0600	20	WSW	2.3	4	1000			27	93%	49% (0.2 mm)	5	2.5 - 4.0
	1200	20	SW	2.4	4	1002			29	86%	83% (0.8 mm)	6	4.0 - 6.0
	1800	18	SW	2.1	4	1001			29	87%	24% (0.1 mm)	7	6.0 - 9.0
04-08-24	0001	17	SSW	2.0	4	1004	30	27	28	90%	35% (0.2 mm)	8	9.0 - 14.0
	0600	16	SW	2.0	4	1003			27	93%	38% (0.2 mm)	9	Over 14.0
	1200	15	SW	1.9	4	1004			28	88%	73% (0.7 mm)		
	1800	13	SSW	1.7	4	1003			29	86%	17% (0.0 mm)		
05-08-24	0001	13	SSW	1.6	4	1005	30	27	28	90%	31% (0.2 mm)		
	0600	13	SW	1.5	4	1004			27	92%	38% (0.2 mm)		
	1200	10	SSW	1.5	4	1005			28	88%	64% (0.6 mm)		
	1800	12	SSW	1.5	4	1004			29	86%	23% (0.0 mm)		

02 Aug 24 Fri (Probability 70%)

03 Aug 24 Sat (Probability 60%)

04 Aug 24 Sun (Probability 50%)

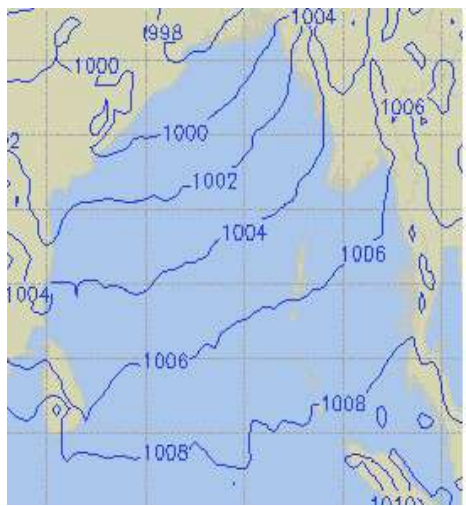
05 Aug 24 Mon (Probability 50%)



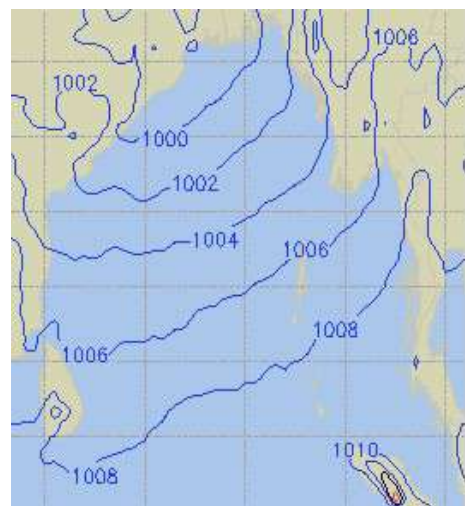
Significant wave height (m)

PREDICTED SURFACE PRESSURE FORECAST (29 July to 04 Aug 2024)

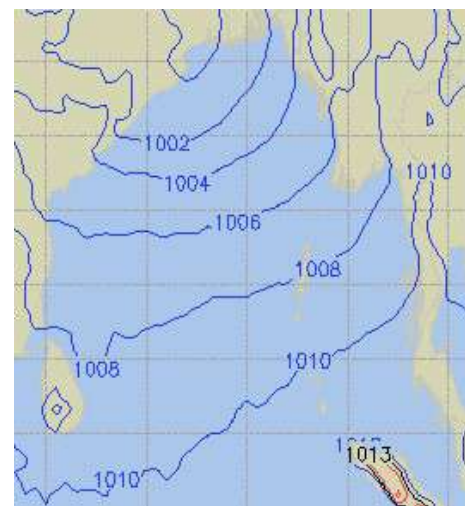
29 July 24 Mon (Probability 98%)



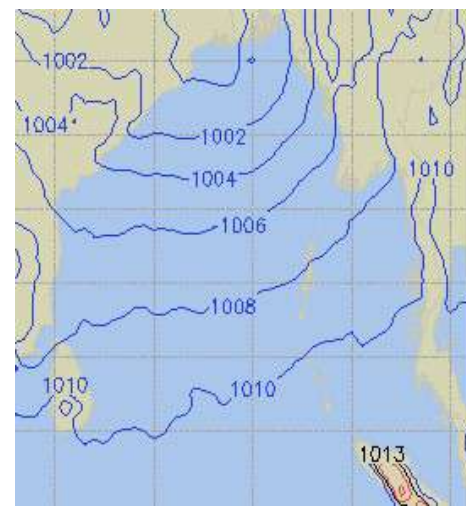
30 July 24 Tue (Probability 95%)



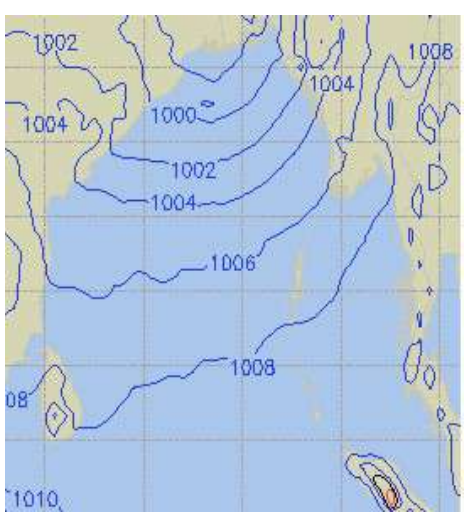
31 July 24 Wed (Probability 90%)



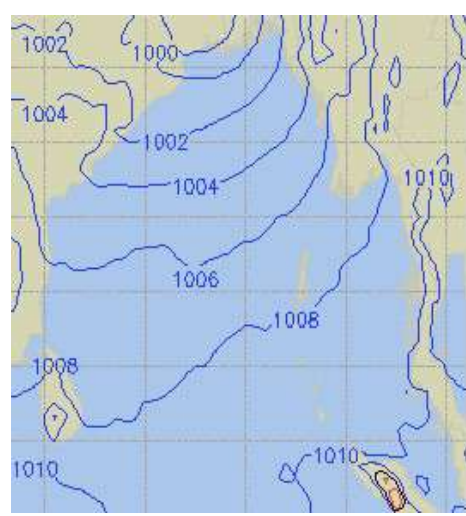
01 Aug 24 Thu (Probability 80%)



02 Aug 24 Fri (Probability 70%)



03 Aug 24 Sat (Probability 60%)



04 Aug 24 Sun (Probability 50%)

