

MARINE WEATHER FORECAST- NEAR AUTHORITY BUOY (Lat 22° 12'N, Long 091° 38'E)

DATE : 29 May to 05 June 2024

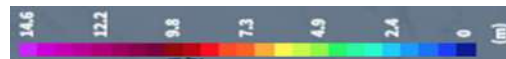
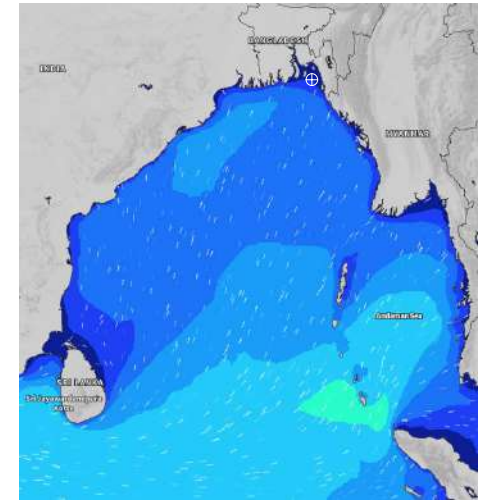
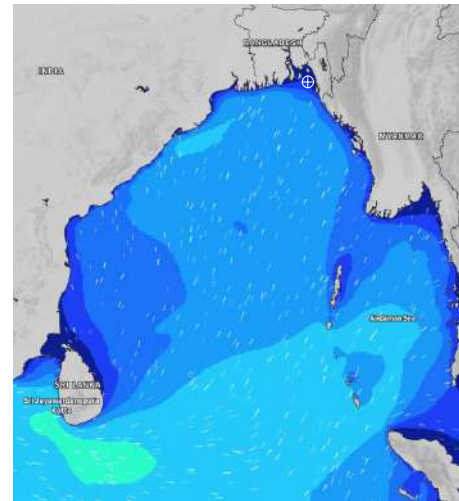
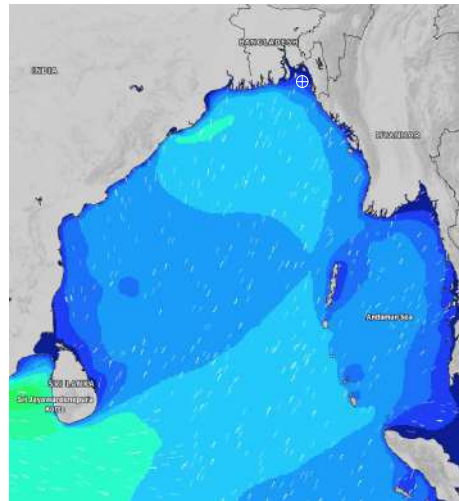
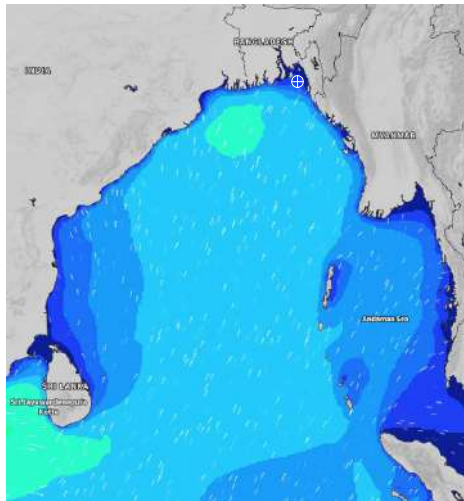
Date	Time	Max Wind Spd (kts)	Wind Direction	Wave Ht (m)	Sea State	Baro Pressure	Air Temp		Sea Surface Temp	Humidity (%)	Prob of Rain (%)	Sea State	Wave Ht (m)
							Max	Min					
29-05-24	0001	24	SSE	0.4	2	1001	31	28	30	95%	36% (0.5 mm)	0	0
	0600	22	SSE	0.4	2	1001			29	94%	54% (0.6 mm)	1	0 - 0.1
	1200	22	S	0.4	2	1002			30	89%	68% (0.6 mm)	2	0.1 - 0.5
	1800	20	S	0.4	2	1001			30	90%	74% (0.7 mm)	3	0.5 - 1.25
30-05-24	0001	25	SSE	0.4	2	1002	31	28	30	91%	50% (0.5 mm)	4	1.25 - 2.5
	0600	21	SSE	0.4	2	1003			29	93%	42% (0.5 mm)	5	2.5 - 4.0
	1200	22	S	0.4	2	1004			31	86%	33% (0.3 mm)	6	4.0 - 6.0
	1800	21	S	0.4	2	1003			30	84%	35% (0.2 mm)	7	6.0 - 9.0
31-05-24	0001	19	SSE	0.3	2	1004	32	28	29	95%	44% (0.4 mm)	8	9.0 - 14.0
	0600	16	SSE	0.3	2	1004			29	87%	42% (0.4 mm)	9	Over 14.0
	1200	16	SSW	0.3	2	1005			30	93%	24% (0.0 mm)		
	1800	17	SSW	0.3	2	1003			30	91%	13% (0.0 mm)		
01-06-24	0001	15	S	0.3	2	1005	32	28	30	92%	46% (0.4 mm)		
	0600	16	SE	0.3	2	1004			29	90%	42% (0.4 mm)		
	1200	14	SSE	0.3	2	1005			30	84%	24% (0.0 mm)		
	1800	15	SSE	0.3	2	1003			30	89%	16% (0.0 mm)		

29 May 24 Wed (Probability 98%)

30 May 24 Thu (Probability 95%)

31 May 24 Fri (Probability 90%)

01 June 24 Sat (Probability 80%)



Significant wave height (m)

MARINE WEATHER FORECAST- NEAR AUTHORITY BUOY (Lat 22° 12'N, Long 091° 38'E)

DATE : 29 May to 05 June 2024

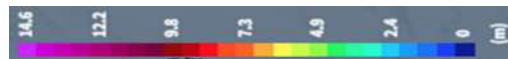
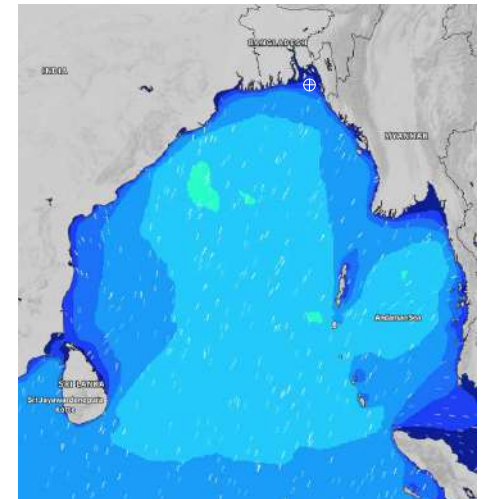
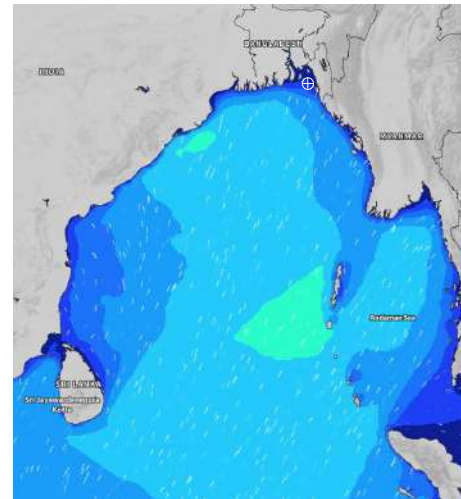
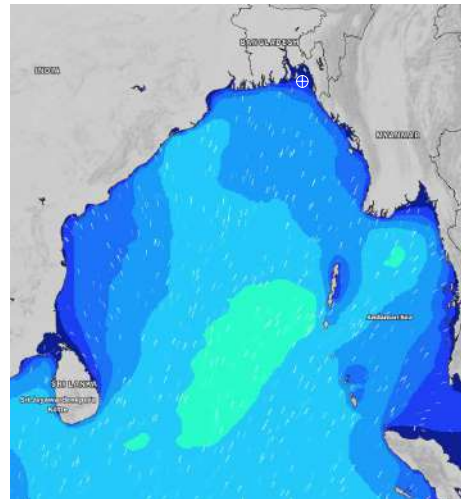
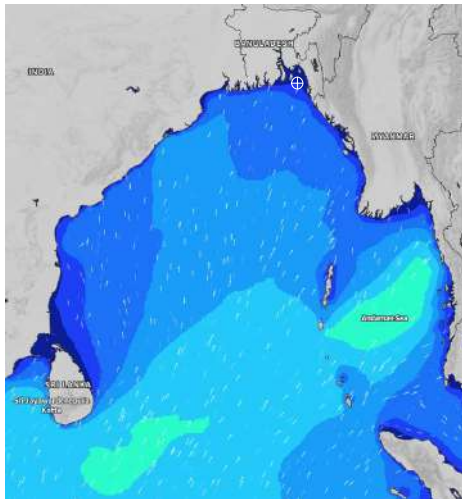
Date	Time	Max Wind Spd (kts)	Wind Direction	Wave Ht (m)	Sea State	Baro Pressure	Air Temp		Sea Surface Temp	Humidity (%)	Prob of Rain (%)	Sea State	Wave Ht (m)
							Max	Min					
02-06-24	0001	16	S	0.3	2	1005	32	27	30	92%	34% (0.4 mm)	0	0
	0600	16	SE	0.3	2	1004			29	90%	32% (0.3 mm)	1	0 - 0.1
	1200	14	SSW	0.3	2	1005			30	83%	28% (0.2 mm)	2	0.1 - 0.5
	1800	17	S	0.3	2	1003			30	84%	30% (0.2 mm)	3	0.5 - 1.25
03-06-24	0001	16	S	0.3	2	1005	31	27	30	92%	36% (0.2 mm)	4	1.25 - 2.5
	0600	15	SE	0.3	2	1004			29	96%	41% (0.4 mm)	5	2.5 - 4.0
	1200	17	SSW	0.4	2	1005			29	83%	32% (0.2 mm)	6	4.0 - 6.0
	1800	21	S	0.5	2	1002			29	84%	34% (0.2 mm)	7	6.0 - 9.0
04-06-24	0001	19	SSE	0.4	2	1004	31	27	29	86%	37% (0.3 mm)	8	9.0 - 14.0
	0600	19	SSE	0.4	2	1003			28	92%	40% (0.4 mm)	9	Over 14.0
	1200	16	SSE	0.4	2	1004			29	83%	32% (0.3 mm)		
	1800	15	SSE	0.3	2	1001			29	94%	42% (0.4 mm)		
05-06-24	0001	19	SSE	0.3	2	1003	31	27	29	85%	36% (0.4 mm)		
	0600	18	SSE	0.3	2	1003			28	96%	37% (0.4 mm)		
	1200	20	SE	0.3	2	1004			29	76%	28% (0.2 mm)		
	1800	18	SSE	0.3	2	1001			29	85%	26% (0.2 mm)		

02 June 24 Sun (Probability 70%)

03 June 24 Mon (Probability 60%)

04 June 24 Tue (Probability 50%)

05 June 24 Wed (Probability 50%)



Significant wave height (m)

MARINE WEATHER FORECAST- 20 NM WEST OF ELEPHANT POINT (Lat 21° 10'N, Long 091° 42'E)

DATE : 29 May to 05 June 2024

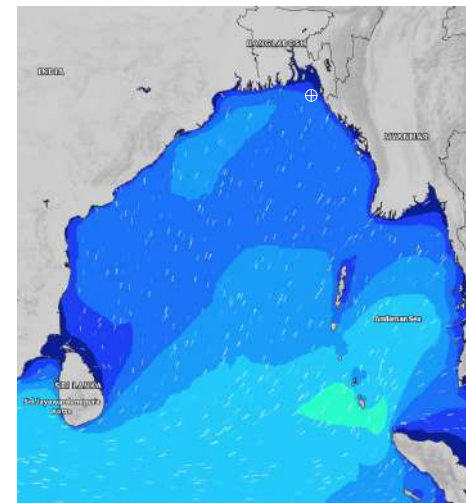
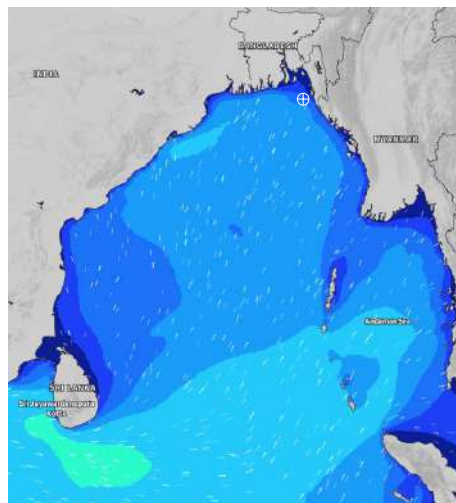
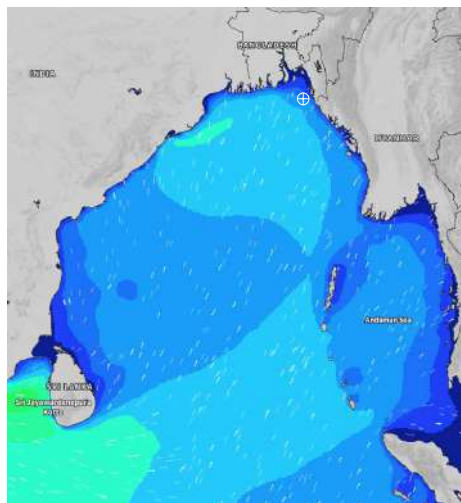
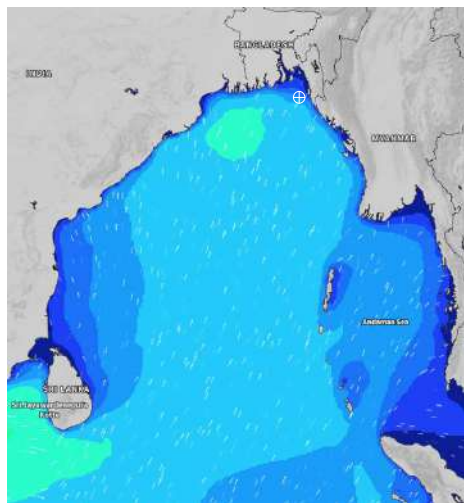
Date	Time	Max Wind Spd (kts)	Wind Direction	Wave Ht (m)	Sea State	Baro Pressure	Air Temp		Sea Surface Temp	Humidity (%)	Prob of Rain (%)	Sea State	Wave Ht (m)
							Max	Min					
29-05-24	0001	23	S	2.3	4	1001	30	27	30	97%	53% (0.5 mm)	0	0
	0600	19	SSW	2.2	4	1002			31	93%	46% (0.4 mm)	1	0 - 0.1
	1200	20	S	2.1	4	1003			31	89%	48% (0.6 mm)	2	0.1 - 0.5
	1800	16	S	2.0	4	1002			31	93%	53% (0.5 mm)	3	0.5 - 1.25
30-05-24	0001	21	SSE	2.0	4	1002	31	28	31	93%	51% (0.5 mm)	4	1.25 - 2.5
	0600	17	S	1.9	4	1003			30	94%	45% (0.5 mm)	5	2.5 - 4.0
	1200	18	SSE	1.9	4	1004			31	82%	42% (0.4 mm)	6	4.0 - 6.0
	1800	18	S	1.8	4	1003			31	96%	41% (0.4 mm)	7	6.0 - 9.0
31-05-24	0001	17	S	1.7	4	1004	31	28	30	93%	65% (0.6 mm)	8	9.0 - 14.0
	0600	13	S	1.6	4	1004			3	85%	43% (0.4 mm)	9	Over 14.0
	1200	16	SSE	1.5	4	1004			30	96%	44% (0.4 mm)		
	1800	15	S	1.5	4	1003			30	96%	44% (0.4 mm)		
01-06-24	0001	12	SSW	1.3	4	1005	31	28	30	93%	50% (0.5 mm)		
	0600	12	SE	1.3	4	1004			30	94%	61% (0.6 mm)		
	1200	14	SSE	1.3	4	1005			30	86%	51% (0.5 mm)		
	1800	13	SE	1.3	4	1003			30	95%	42% (0.4 mm)		

29 May 24 Wed (Probability 98%)

30 May 24 Thu (Probability 95%)

31 May 24 Fri (Probability 90%)

01 June 24 Sat (Probability 80%)



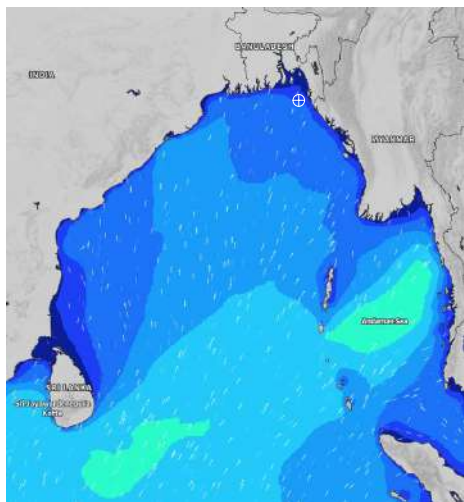
Significant wave height (m)

MARINE WEATHER FORECAST- 20 NM WEST OF ELEPHANT POINT (Lat 21° 10'N, Long 091° 42' E)

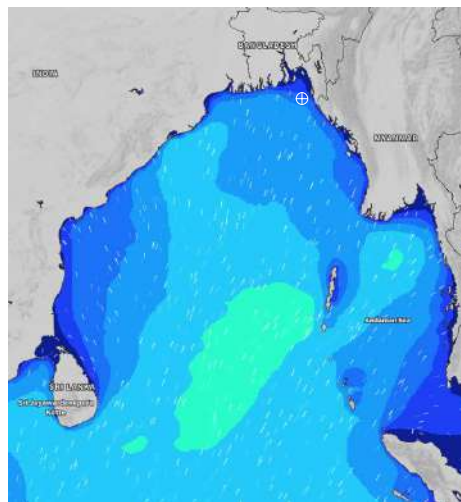
DATE : 29 May to 05 June 2024

Date	Time	Max Wind Spd (kts)	Wind Direction	Wave Ht (m)	Sea State	Baro Pressure	Air Temp		Sea Surface Temp	Humidity (%)	Prob of Rain (%)	Sea State	Wave Ht (m)
							Max	Min					
02-06-24	0001	13	SSW	1.2	3	1005	31	28	30	93%	36% (0.4 mm)	0	0
	0600	10	S	1.2	3	1004			30	92%	34% (0.3 mm)	1	0 - 0.1
	1200	12	S	1.1	3	1005			30	84%	26% (0.2 mm)	2	0.1 - 0.5
	1800	14	SSW	1.2	3	1003			31	86%	32% (0.3 mm)	3	0.5 - 1.25
03-06-24	0001	14	S	1.2	3	1004	31	28	30	92%	44% (0.4 mm)	4	1.25 - 2.5
	0600	13	SSE	1.3	4	1004			29	93%	41% (0.4 mm)	5	2.5 - 4.0
	1200	15	S	1.4	4	1005			30	85%	36% (0.4 mm)	6	4.0 - 6.0
	1800	17	S	1.5	4	1003			30	84%	29% (0.3 mm)	7	6.0 - 9.0
04-06-24	0001	14	S	1.6	4	1004	31	28	30	96%	42% (0.4 mm)	8	9.0 - 14.0
	0600	14	SSE	1.6	4	1003			29	97%	31% (0.3 mm)	9	Over 14.0
	1200	17	S	1.7	4	1004			30	84%	30% (0.3 mm)		
	1800	15	S	1.7	4	1002			30	85%	43% (0.4 mm)		
05-06-24	0001	15	S	1.7	4	1004	31	28	29	96%	45% (0.4 mm)		
	0600	18	SSE	1.7	4	1002			29	93%	34% (0.3 mm)		
	1200	16	SSE	1.7	4	1003			30	75%	26% (0.3 mm)		
	1800	17	SE	1.7	4	1002			29	86%	37% (0.4 mm)		

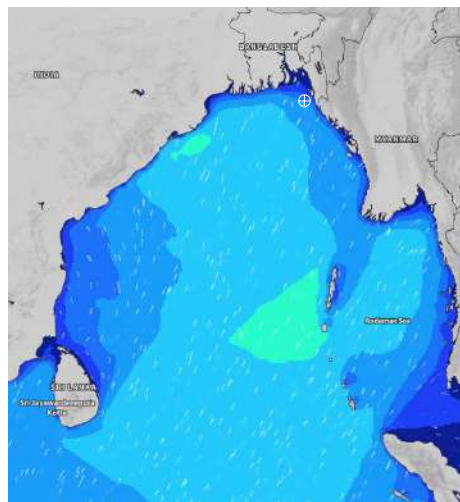
02 June 24 Sun (Probability 70%)



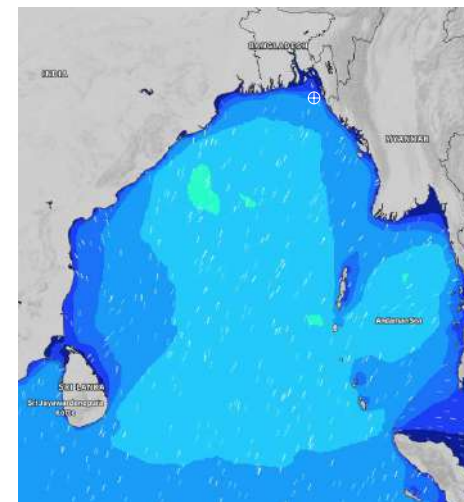
03 June 24 Mon (Probability 60%)



04 June 24 Tue (Probability 50%)



05 June 24 Wed (Probability 50%)



MARINE WEATHER FORECAST- 15 NM WEST OF ST. MARTIN'S LIGHT HOUSE (Lat 20° 37'N, Long 092° 03'E)

DATE : 29 May to 05 June 2024

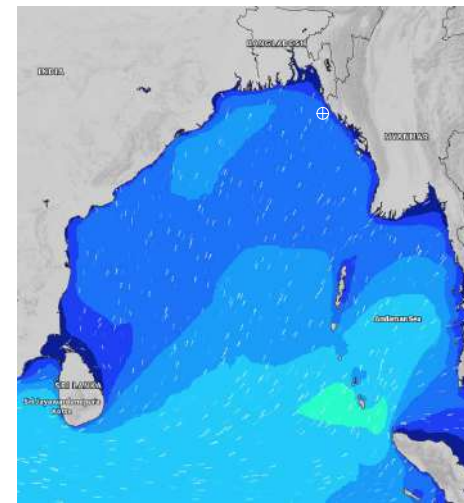
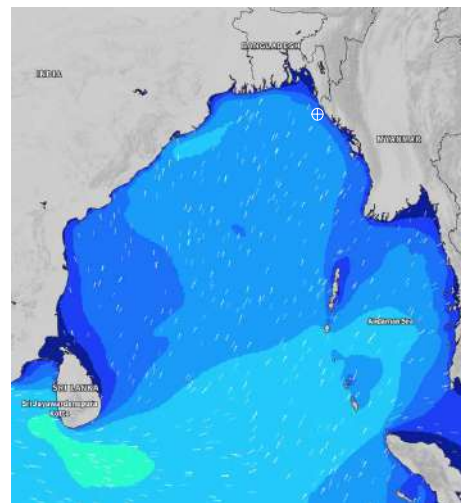
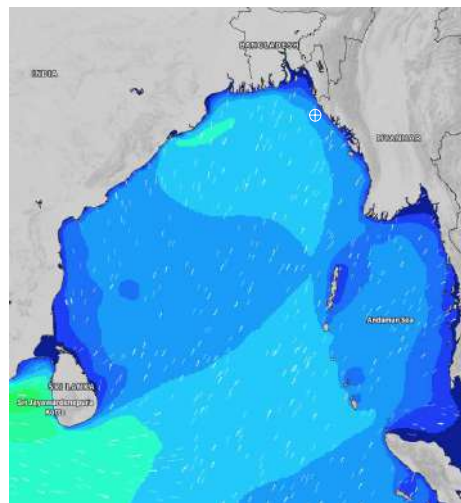
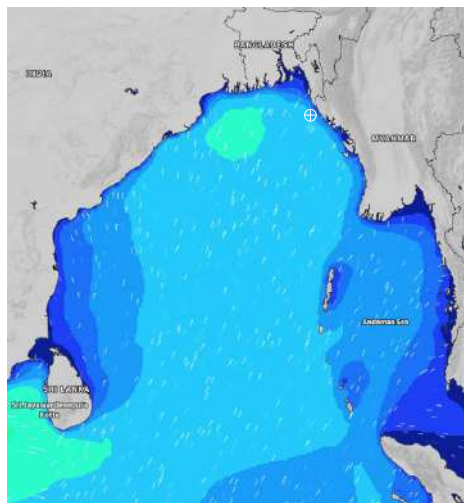
Date	Time	Max Wind Spd (kts)	Wind Direction	Wave Ht (m)	Sea State	Baro Pressure	Air Temp		Sea Surface Temp	Humidity (%)	Prob of Rain(%)	Sea State	Wave Ht (m)		
							Max	Min							
29-05-24	0001	22	SSW	2.9	5	1003	30	27	31	92%	51% (0.5 mm)	0	0		
	0600	19	SSW	2.8	5	1002			30	27	30	90%	62% (0.5 mm)	1	0 - 0.1
	1200	17	S	2.6	5	1004			30	27	31	89%	56% (0.5 mm)	2	0.1 - 0.5
	1800	13	S	2.5	5	1002			30	27	31	91%	57% (0.5 mm)	3	0.5 - 1.25
30-05-24	0001	16	S	2.4	4	1004	30	28	31	92%	52% (0.5 mm)	4	1.25 - 2.5		
	0600	15	SSW	2.3	4	1003			30	28	30	91%	61% (0.6 mm)	5	2.5 - 4.0
	1200	15	S	2.3	4	1005			30	28	31	88%	53% (0.5 mm)	6	4.0 - 6.0
	1800	13	S	2.2	4	1003			30	28	31	89%	54% (0.5 mm)	7	6.0 - 9.0
31-05-24	0001	15	S	2.1	4	1004	31	28	30	93%	52% (0.5 mm)	8	9.0 - 14.0		
	0600	10	S	1.9	4	1004			31	28	30	91%	51% (0.5 mm)	9	Over 14.0
	1200	13	S	1.9	4	1005			31	28	31	86%	53% (0.5 mm)		
	1800	11	S	1.7	4	1003			31	28	31	87%	55% (0.5 mm)		
01-06-24	0001	12	SSW	1.6	4	1005	31	28	30	92%	42% (0.4 mm)				
	0600	9	S	1.6	4	1004			31	28	30	94%	41% (0.4 mm)		
	1200	10	SSE	1.5	4	1005			31	28	30	86%	26% (0.2 mm)		
	1800	13	SE	1.5	4	1003			31	28	31	88%	35% (0.2 mm)		

29 May 24 Wed (Probability 98%)

30 May 24 Thu (Probability 95%)

31 May 24 Fri (Probability 90%)

01 June 24 Sat (Probability 80%)



Significant wave height (m)

MARINE WEATHER FORECAST- 15 NM WEST OF ST. MARTIN'S LIGHT HOUSE (Lat 20° 37'N, Long 092° 03' E)

DATE : 29 May to 05 June 2024

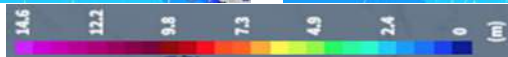
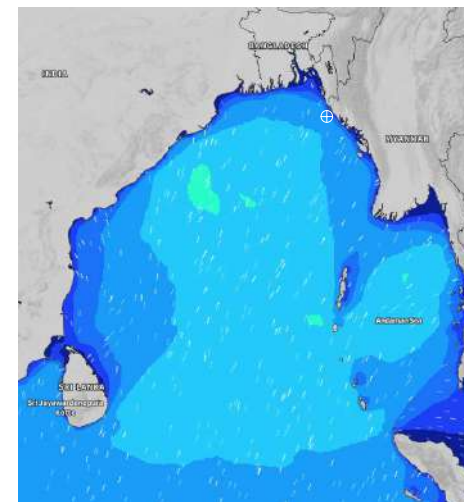
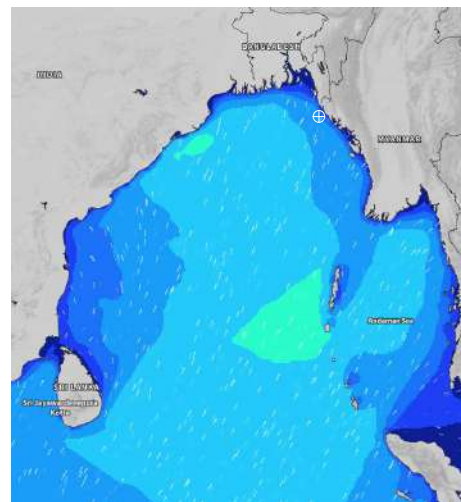
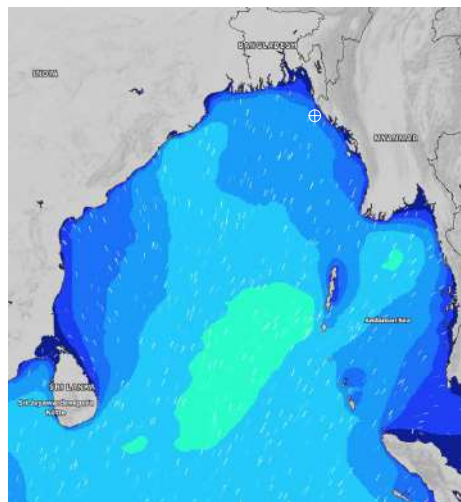
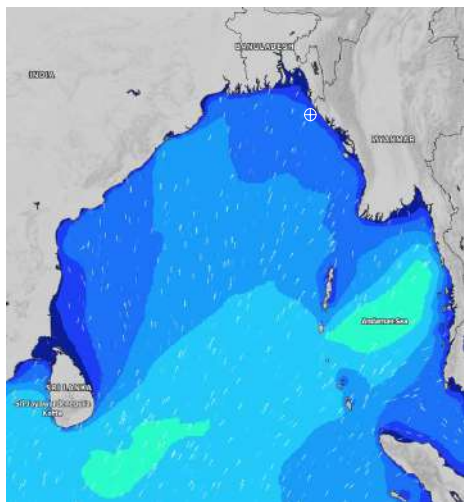
Date	Time	Max Wind Spd (kts)	Wind Direction	Wave Ht (m)	Sea State	Baro Pressure	Air Temp		Sea Surface Temp	Humidity (%)	Prob of Rain (%)	Sea State	Wave Ht (m)
							Max	Min					
02-06-24	0001	11	SSW	1.4	4	1006	31	27	30	92%	36% (0.4 mm)	0	0
	0600	10	SSW	1.4	4	1004			30	91%	41% (0.4 mm)	1	0 - 0.1
	1200	10	SSE	1.3	4	1006			30	88%	38% (0.4 mm)	2	0.1 - 0.5
	1800	13	SW	1.3	4	1006			31	84%	40% (0.4 mm)	3	0.5 - 1.25
03-06-24	0001	12	SSW	1.4	4	1005	30	27	30	92%	46% (0.4 mm)	4	1.25 - 2.5
	0600	11	SW	1.6	4	1004			30	90%	42% (0.4 mm)	5	2.5 - 4.0
	1200	13	S	1.8	4	1005			30	86%	31% (0.3 mm)	6	4.0 - 6.0
	1800	13	SSE	1.8	4	1003			30	87%	43% (0.4 mm)	7	6.0 - 9.0
04-06-24	0001	14	S	1.9	3	1004	30	27	30	93%	57% (0.5 mm)	8	9.0 - 14.0
	0600	11	SSW	2.0	4	1003			29	88%	32% (0.3 mm)	9	Over 14.0
	1200	10	SSW	2.1	4	1004			29	81%	30% (0.3 mm)		
	1800	15	SSW	2.1	4	1003			29	86%	50% (0.5 mm)		
05-06-24	0001	14	SSW	2.0	4	1004	31	28	30	93%	52% (0.5 mm)		
	0600	10	S	1.9	4	1002			29	89%	24% (0.1 mm)		
	1200	14	S	2.0	4	1004			29	86%	33% (0.2 mm)		
	1800	15	SSE	2.0	4	1002			29	87%	56% (0.5 mm)		

02 June 24 Sun (Probability 70%)

03 June 24 Mon (Probability 60%)

04 June 24 Tue (Probability 50%)

05 June 24 Wed (Probability 50%)



Significant wave height (m)

MARINE WEATHER FORECAST- 40 NM ESE OF PAYRA FAIRWAY (Lat 21° 07' N, Long 090° 45' E)

DATE : 29 May to 05 June 2024

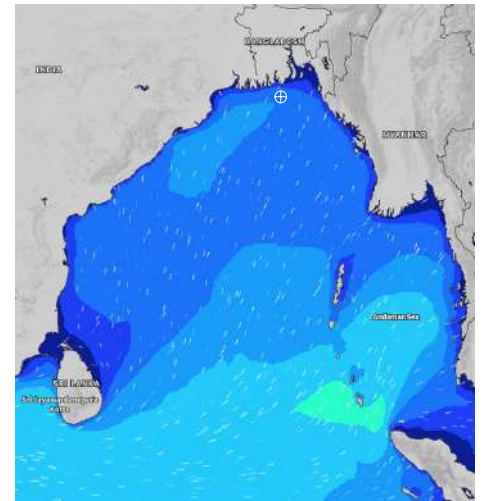
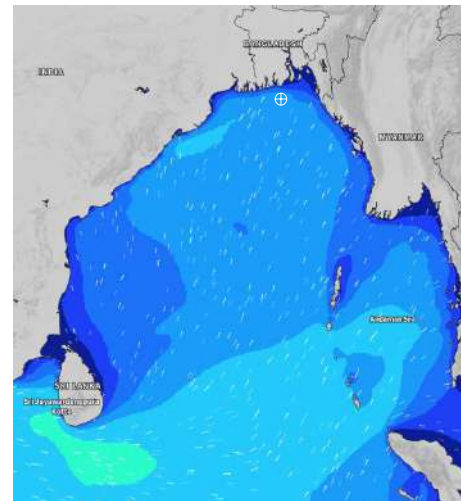
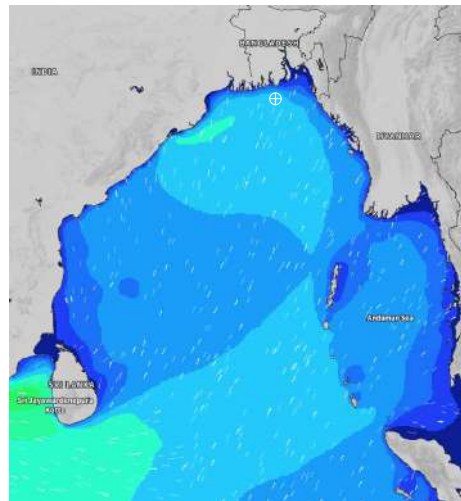
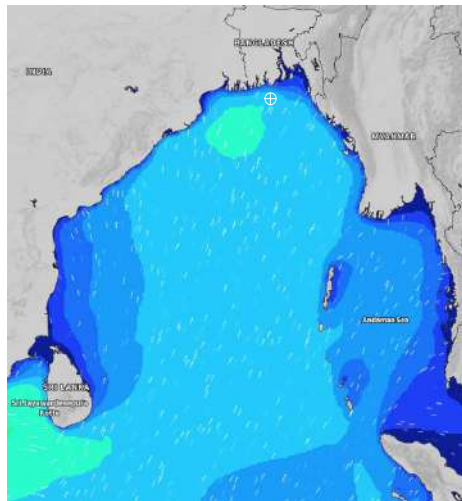
Date	Time	Max Wind Spd (kts)	Wind Direction	Wave Ht (m)	Sea State	Baro Pressure	Air Temp		Sea Surface Temp	Humidity (%)	Prob of Rain (%)	Sea State	Wave Ht (m)
							Max	Min					
29-05-24	0001	26	SSW	3.0	5	1000	31	29	31	93%	30% (0.3 mm)	0	0
	0600	22	SSW	2.9	5	1001			30	89%	41% (0.4 mm)	1	0 - 0.1
	1200	21	SSW	2.8	5	1003			31	85%	36% (0.4 mm)	2	0.1 - 0.5
	1800	19	SSW	2.8	5	1001			31	86%	32% (0.3 mm)	3	0.5 - 1.25
30-05-24	0001	22	S	2.7	5	1001	32	29	31	91%	30% (0.3 mm)	4	1.25 - 2.5
	0600	19	S	2.7	5	1003			30	89%	32% (0.3 mm)	5	2.5 - 4.0
	1200	21	S	2.6	5	1004			31	86%	26% (0.2 mm)	6	4.0 - 6.0
	1800	21	S	2.5	5	1004			31	89%	20% (0.0 mm)	7	6.0 - 9.0
31-05-24	0001	18	S	2.4	4	1002	31	29	31	89%	33% (0.3 mm)	8	9.0 - 14.0
	0600	15	S	2.2	4	1003			31	82%	32% (0.2 mm)	9	Over 14.0
	1200	20	SSW	2.1	4	1004			31	83%	31% (0.2 mm)		
	1800	15	S	2.0	4	1002			31	89%	34% (0.3 mm)		
01-06-24	0001	15	SSW	1.8	4	1005	31	29	30	89%	22% (0.0 mm)		
	0600	15	S	1.8	4	1003			30	90%	13% (0.0 mm)		
	1200	18	S	1.9	4	1005			31	84%	25% (0.1 mm)		
	1800	17	S	1.8	4	1002			31	88%	13% (0.0 mm)		

29 May 24 Wed (Probability 98%)

30 May 24 Thu (Probability 95%)

31 May 24 Fri (Probability 90%)

01 June 24 Sat (Probability 80%)



Significant wave height (m)

MARINE WEATHER FORECAST- 40 NM ESE OF PAYRA FAIRWAY (Lat 21° 07' N, Long 090° 45' E)

DATE : 29 May to 05 June 2024

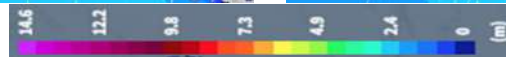
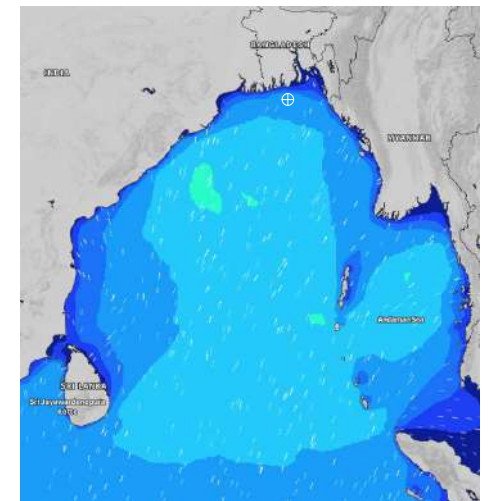
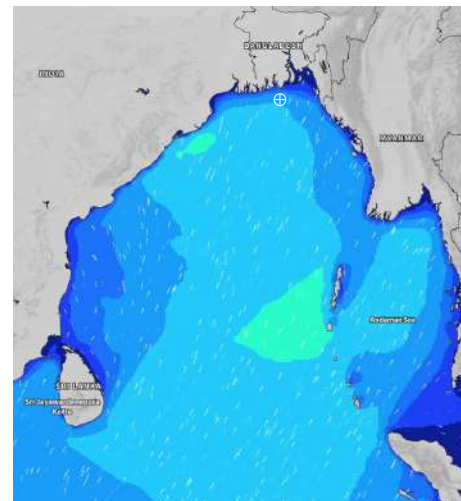
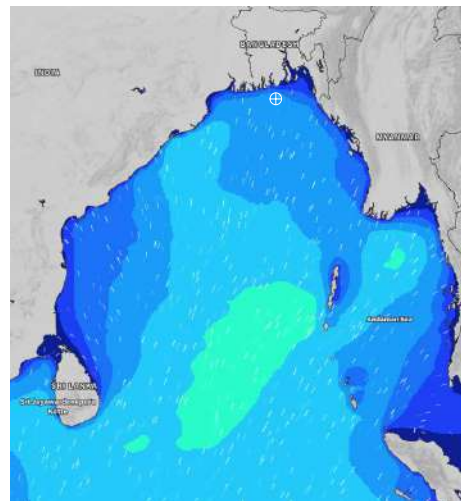
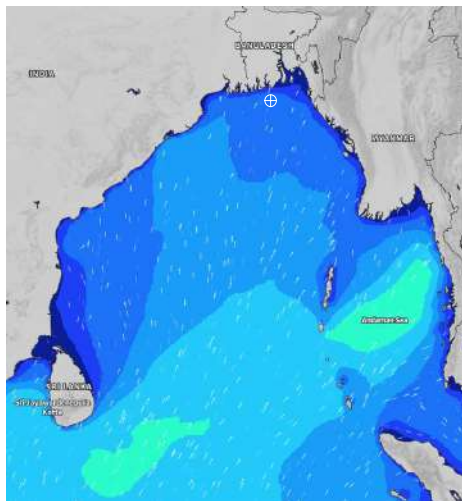
Date	Time	Max Wind Spd (kts)	Wind Direction	Wave Ht (m)	Sea State	Baro Pressure	Air Temp		Sea Surface Temp	Humidity (%)	Prob of Rain (%)	Sea State	Wave Ht (m)
							Max	Min					
02-06-24	0001	17	SSW	1.6	4	1004	31	29	31	88%	30% (0.2 mm)	0	0
	0600	14	S	1.5	4	1003			30	89%	34% (0.2 mm)	1	0 - 0.1
	1200	13	SSW	1.5	4	1005			31	83%	26% (0.1 mm)	2	0.1 - 0.5
	1800	16	SSW	1.6	4	1003			31	87%	21% (0.0 mm)	3	0.5 - 1.25
03-06-24	0001	16	SSW	1.7	4	1004	31	29	31	90%	33% (0.3 mm)	4	1.25 - 2.5
	0600	17	SSW	1.9	4	1003			30	91%	35% (0.3 mm)	5	2.5 - 4.0
	1200	17	SSW	2.0	4	1004			31	83%	34% (0.3 mm)	6	4.0 - 6.0
	1800	19	SSW	2.1	4	1002			31	86%	32% (0.2 mm)	7	6.0 - 9.0
04-06-24	0001	18	SSW	2.2	4	1004	32	29	30	89%	44% (0.4 mm)	8	9.0 - 14.0
	0600	19	SSW	2.4	4	1003			29	88%	26% (0.1 mm)	9	Over 14.0
	1200	18	S	2.4	4	1004			30	82%	32% (0.2 mm)		
	1800	18	SSW	2.4	4	1001			30	86%	42% (0.4 mm)		
05-06-24	0001	19	S	2.4	4	1003	31	29	30	89%	41% (0.4 mm)		
	0600	18	SSW	2.4	4	1002			29	87%	29% (0.1 mm)		
	1200	16	SW	2.3	4	1003			30	82%	31% (0.2 mm)		
	1800	17	SSW	2.3	4	1001			30	84%	24% (0.1 mm)		

02 June 24 Sun (Probability 70%)

03 June 24 Mon (Probability 60%)

04 June 24 Tue (Probability 50%)

05 June 24 Wed (Probability 50%)



Significant wave height (m)

MARINE WEATHER FORECAST- 10 NM SOUTH OF MONGLA FAIRWAY (Lat 21° 16'N, Long 089° 34'E)

DATE : 29 May to 05 June 2024

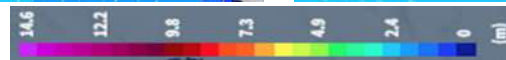
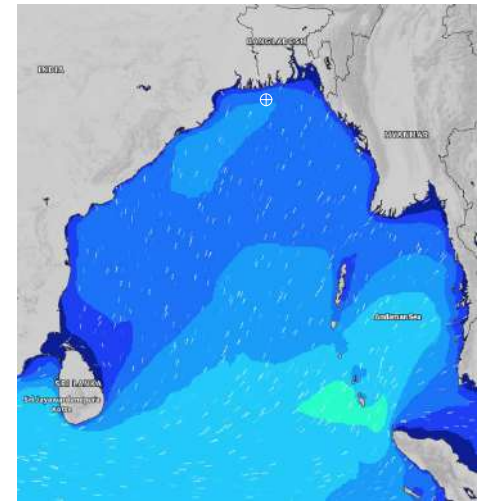
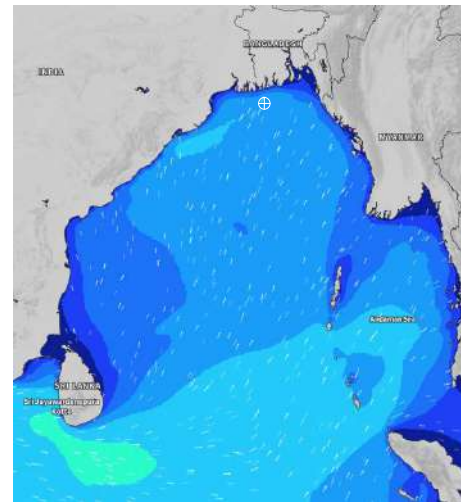
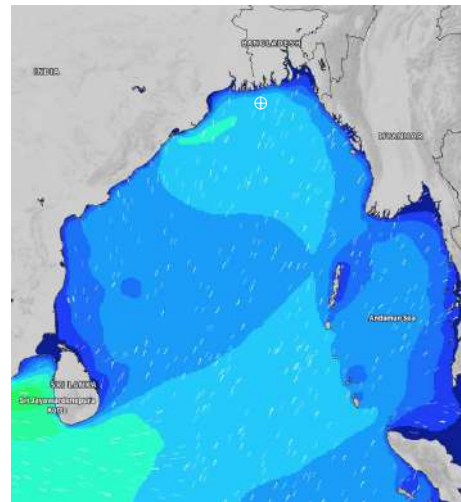
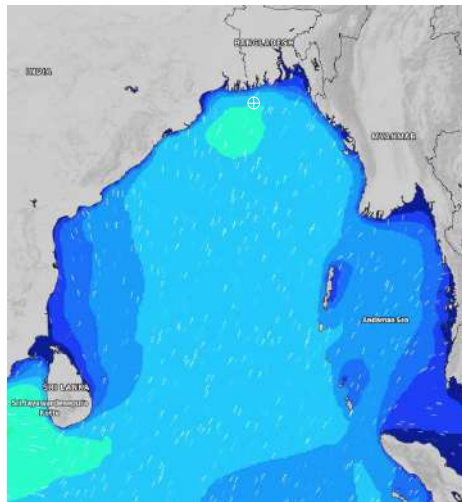
Date	Time	Max Wind Spd (kts)	Wind Direction	Wave Ht (m)	Sea State	Baro Pressure	Air Temp		Sea Surface Temp	Humidity (%)	Prob of Rain (%)	Sea State	Wave Ht (m)
							Max	Min					
29-05-24	0001	28	SSW	3.0	5	1000	32	29	30	93%	46% (0.4 mm)	0	0
	0600	26	SSW	2.9	5	1000			30	86%	51% (0.5 mm)	1	0 - 0.1
	1200	24	SSW	2.9	5	1001			31	83%	42% (0.4 mm)	2	0.1 - 0.5
	1800	22	S	2.8	5	999			31	84%	26% (0.1 mm)	3	0.5 - 1.25
30-05-24	0001	26	S	2.8	5	1000	34	29	30	92%	25% (0.1 mm)	4	1.25 - 2.5
	0600	23	S	2.7	5	1001			30	90%	34% (0.2 mm)	5	2.5 - 4.0
	1200	25	S	2.7	5	1003			31	83%	26% (0.1 mm)	6	4.0 - 6.0
	1800	23	S	2.6	5	1001			30	85%	25% (0.1 mm)	7	6.0 - 9.0
31-05-24	0001	21	S	2.5	5	1002	33	29	30	89%	24% (0.1 mm)	8	9.0 - 14.0
	0600	18	S	2.3	4	1003			30	86%	22% (0.0 mm)	9	Over 14.0
	1200	23	S	2.2	4	1003			31	81%	25% (0.1 mm)		
	1800	19	S	2.1	4	1001			30	86%	23% (0.0 mm)		
01-06-24	0001	17	SSW	2.0	4	1004	33	28	30	89%	26% (0.1 mm)		
	0600	17	SSW	1.9	4	1003			30	88%	33% (0.1 mm)		
	1200	15	SSW	1.9	4	1004			31	76%	25% (0.1 mm)		
	1800	16	SW	1.9	4	1002			30	81%	26% (0.1 mm)		

29 May 24 Wed (Probability 98%)

30 May 24 Thu (Probability 95%)

31 May 24 Fri (Probability 90%)

01 June 24 Sat (Probability 80%)



Significant wave height (m)

MARINE WEATHER FORECAST- 10 NM SOUTH OF MONGLA FAIRWAY (Lat 21° 16'N, Long 089° 34'E)

DATE : 29 May to 05 June 2024

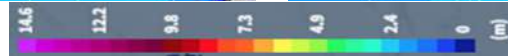
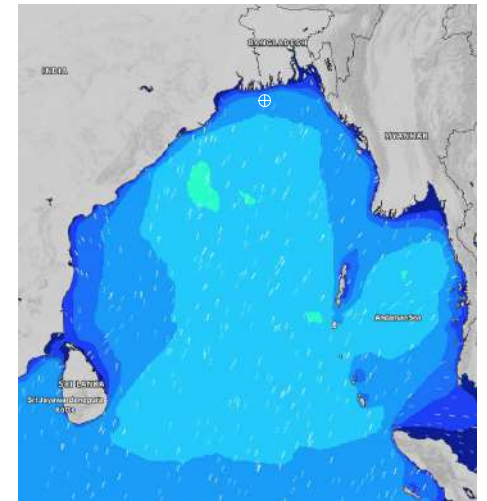
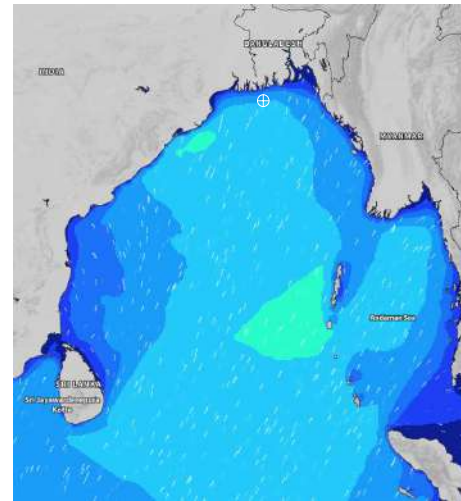
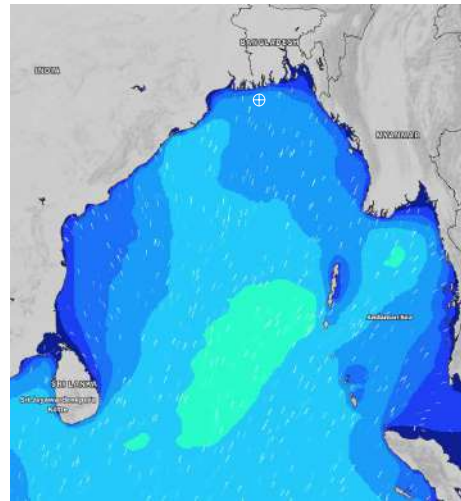
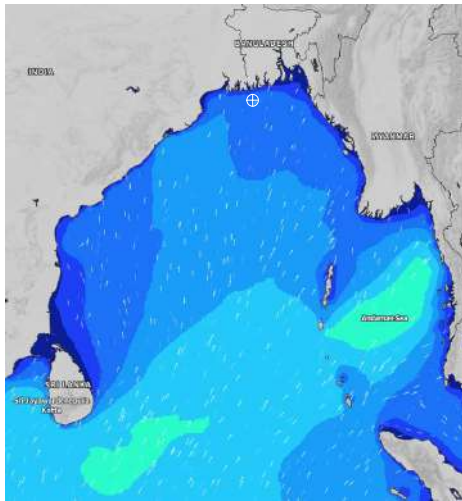
Date	Time	Max Wind Spd (kts)	Wind Direction	Wave Ht (m)	Sea State	Baro Pressure	Air Temp		Sea Surface Temp	Humidity (%)	Prob of Rain (%)	Sea State	Wave Ht (m)
							Max	Min					
02-06-24	0001	20	SSW	1.7	4	1003	33	28	30	89%	24% (0.1 mm)	0	0
	0600	19	S	1.7	4	1002			30	88%	30% (0.2 mm)	1	0 - 0.1
	1200	16	SSW	1.6	4	1004			31	78%	24% (0.1 mm)	2	0.1 - 0.5
	1800	19	SSW	1.7	4	1002			31	81%	25% (0.1 mm)	3	0.5 - 1.25
03-06-24	0001	22	SSW	1.8	4	1003	33	28	30	88%	27% (0.1 mm)	4	1.25 - 2.5
	0600	22	SSW	2.0	4	1002			30	91%	32% (0.2 mm)	5	2.5 - 4.0
	1200	20	SSW	2.1	4	1003			31	79%	30% (0.2 mm)	6	4.0 - 6.0
	1800	22	S	2.2	4	1000			30	82%	31% (0.2 mm)	7	6.0 - 9.0
04-06-24	0001	19	SW	2.3	4	1003	33	28	30	89%	29% (0.1 mm)	8	9.0 - 14.0
	0600	19	SSW	2.4	4	1002			30	90%	25% (0.1 mm)	9	Over 14.0
	1200	21	SSW	2.4	4	1001			31	78%	30% (0.2 mm)		
	1800	21	S	2.4	4	1000			30	83%	26% (0.1 mm)		
05-06-24	0001	18	SSW	2.3	4	1001	34	29	30	89%	30% (0.2 mm)		
	0600	17	SSW	2.3	4	1001			30	91%	25% (0.1 mm)		
	1200	16	SW	2.2	4	1002			31	86%	32% (0.2 mm)		
	1800	15	SSW	2.2	4	1000			31	88%	28% (0.1 mm)		

02 June 24 Sun (Probability 70%)

03 June 24 Mon (Probability 60%)

04 June 24 Tue (Probability 50%)

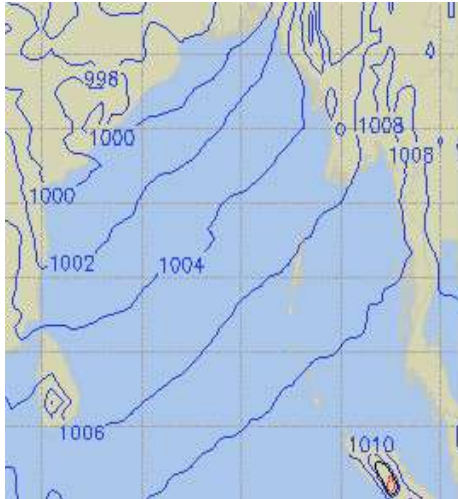
05 June 24 Wed (Probability 50%)



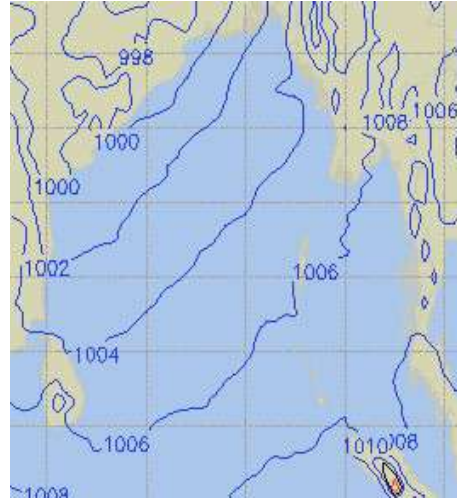
Significant wave height (m)

PREDICTED SURFACE PRESSURE FORECAST (29 May to 04 June 2024)

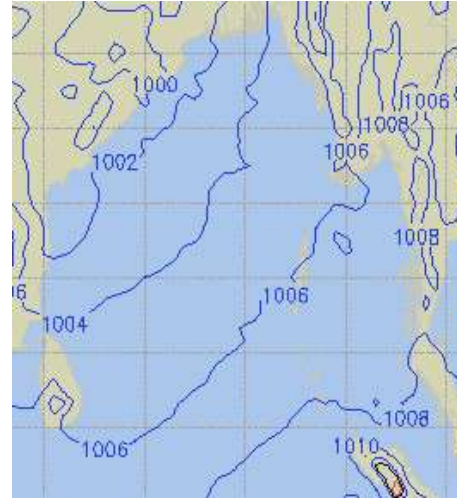
29 May 24 Wed (Probability 98%)



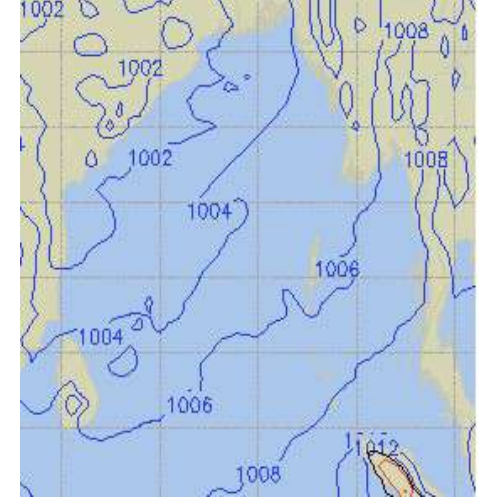
30 May 24 Thu (Probability 95%)



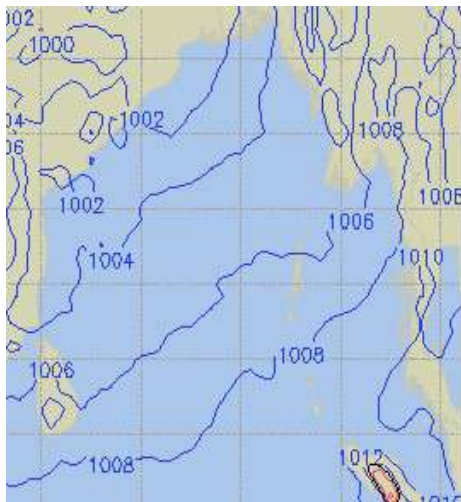
31 May 24 Fri (Probability 90%)



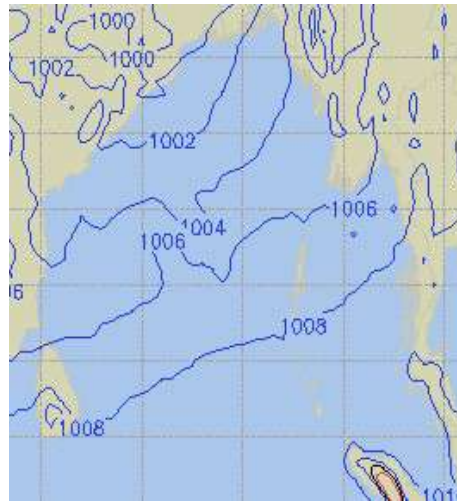
01 June 24 Sat (Probability 80%)



02 June 24 Sun (Probability 70%)



03 June 24 Mon (Probability 60%)



04 June 24 Tue (Probability 50%)

