



SUMMARY OF MARINE WEATHER FORECAST
COASTAL AREA OF BANGLADESH
DATE: 29 April to 06 May 2026



Fleet Forecast	The trough of low persists from West Bengal to North Bay of Bengal.
Wind Direction, Speed	South-west/Southerly 15-20 kts, temporary gusting up to 30 kts.
Wave Height & Sea State	Ctg Outer Anchorage: 0.4 to 0.9 m (Sea state: 2 to 3) Abeam to Cox's Bazar: 1.2 to 1.9 m (Sea state: 3 to 4) St. Martin's Island: 1.2 to 1.7 m (Sea state 3 to 4) Payra Fairway Buoy: 1.4 to 2.3 m (Sea state: 4) Mongla Fairway Buoy: 1.3 to 2.4 m (Sea state: 4) Outer EEZ: 1.2 to 2.1 m (Sea state: 3 to 4)
Sea Surface Temperature	26° C - 29° C
Baro Pressure	1005-1011 mb
Rainfall	Cloudy to cloudy sky with moderate to heavy rain/thunder showers with gusty wind is likely to occur over Bay of Bengal and adjoining area.
Fog & Visibility	Hazy condition over the Bay of Bengal & coastal area, Visibility 1.5 – 5.0 km

Marine Weather Outlook (29 April to 06 May 2026):

- Cloudy to cloudy sky with moderate to heavy rain/thunder showers with gusty wind is likely to occur over Bay of Bengal and adjoining area.
- Hazy condition over the Bay of Bengal & coastal area.
- Rainfall activity may continue.



MARINE WEATHER FORECAST (29 April to 06 May 2026)

PATENGA POINT (22° 12' N, 091° 38' E)



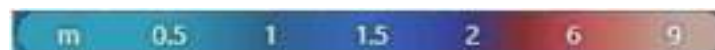
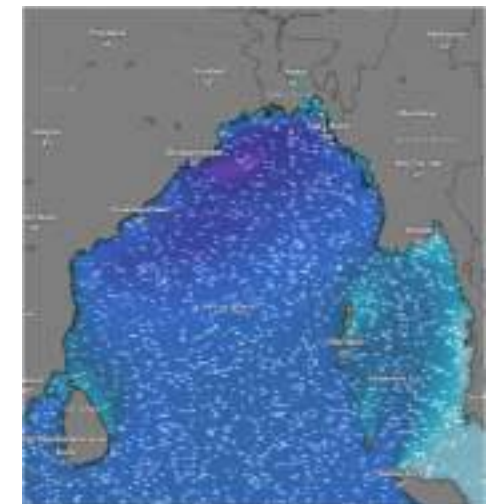
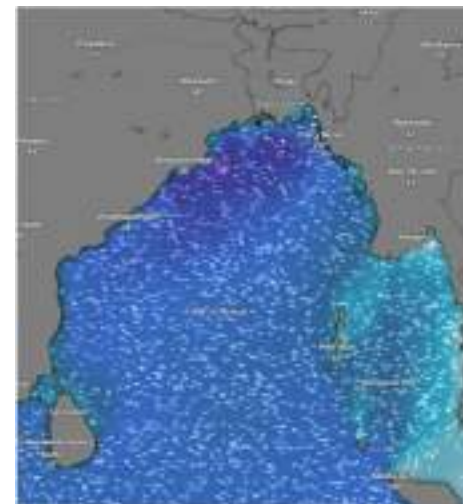
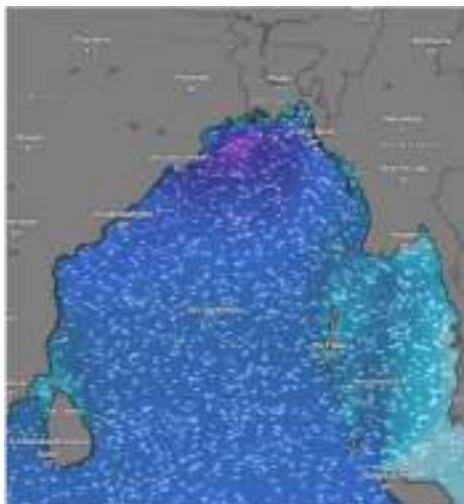
Date	Time	Air Temp (°C)		Sea Surface Temp (°C)	Baro Pressure (mbar)	Wind Direction	Wind Spd (kts)		Wave Ht (m)	Sea State	Humidity (%)	Prob of Rain (%)	Amount of Rain (mm)
		Max	Min				Gusting	Avg					
29-04-26 (Wednesday)	0001	31	26	28	1010	SSE	14	10	0.6	3	89	22	0.0
	0600			27	1011	SSE	18	14	0.7	3	91	18	0.0
	1200			29	1009	S	22	16	0.7	3	75	78	5.6
	1800			28	1008	SSE	23	16	0.7	3	86	68	5.2
30-04-26 (Thursday)	0001	32	26	28	1009	S	24	17	0.6	3	88	32	0.2
	0600			27	1010	S	14	10	0.5	3	91	27	0.2
	1200			30	1008	SSW	17	13	0.7	3	78	14	0.0
	1800			28	1007	S	16	12	0.7	3	85	36	0.2
01-05-26 (Friday)	0001	32	26	28	1007	SSE	17	13	0.7	3	89	40	0.4
	0600			27	1008	SSE	24	17	0.8	3	91	34	0.2
	1200			30	1006	SSW	22	16	0.8	3	76	22	0.1
	1800			28	1005	SE	15	11	0.6	3	87	30	0.2
02-05-26 (Saturday)	0001	32	26	28	1007	SSE	16	12	0.7	3	90	32	0.2
	0600			27	1008	SSE	18	14	0.5	3	91	24	0.1
	1200			30	1006	SSW	14	10	0.5	3	75	12	0.0
	1800			28	1005	SSE	16	12	0.8	3	86	16	0.0

29 Apr 2026

30 Apr 2026

01 May 2026

02 May 2026



Significant wave height (m)

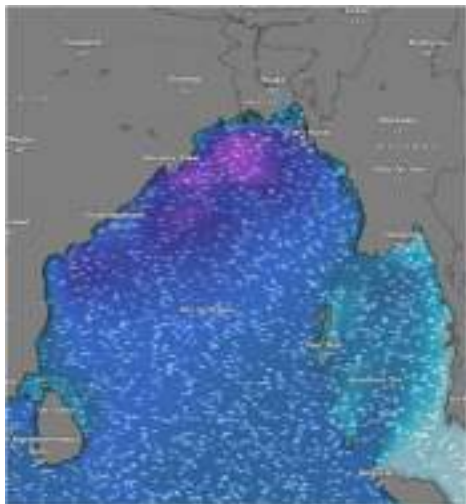


MARINE WEATHER FORECAST (29 April to 06 May 2026) PATENGA POINT (22° 12' N, 091° 38' E)



Date	Time	Air Temp (°C)		Sea Surface Temp (°C)	Baro Pressure (mbar)	Wind Direction	Wind Spd (kts)		Wave Ht (m)	Sea State	Humidity (%)	Prob of Rain (%)	Amount of Rain (mm)
		Max	Min				Gusting	Avg					
03-05-26 (Sunday)	0001	32	26	28	1007	SSE	26	17	0.8	3	90	35	0.2
	0600			27	1008	SSE	24	16	0.7	3	91	26	0.1
	1200			30	1006	SSW	17	12	0.7	3	74	15	0.0
	1800			28	1005	SSE	24	16	0.5	3	85	25	0.1
04-05-26 (Monday)	0001	32	26	28	1009	SSE	28	17	0.9	3	91	32	0.2
	0600			27	1010	SSE	22	16	0.8	3	90	27	0.2
	1200			30	1008	SSW	18	11	0.8	3	76	16	0.0
	1800			28	1007	SSE	26	21	0.8	3	84	26	0.1
05-05-26 (Tuesday)	0001	32	26	28	1009	SSE	17	13	0.5	3	91	32	0.2
	0600			27	1010	SSE	16	12	0.4	2	90	24	0.1
	1200			30	1008	SSW	13	09	0.5	3	76	15	0.0
	1800			28	1007	S	12	08	0.5	3	84	25	0.1
06-05-26 (Wednesday)	0001	32	26	28	1009	SSW	09	5	0.5	3	89	24	0.1
	0600			27	1010	SSE	10	9	0.5	3	90	15	0.0
	1200			30	1008	S	17	13	0.4	2	74	10	0.0
	1800			28	1007	SSW	12	08	0.3	2	85	14	0.0

03 May 2026



04 May 2026



05 May 2026



06 May 2026



Significant wave height (m)



MARINE WEATHER FORECAST (29 April to 06 May 2026)

ABEAM TO KUTUBDIA (21° 51' N, 091° 40' E)



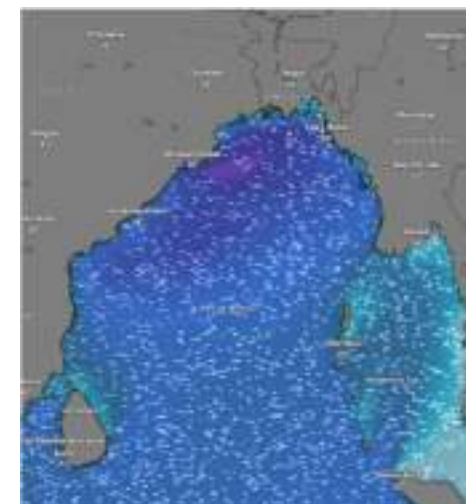
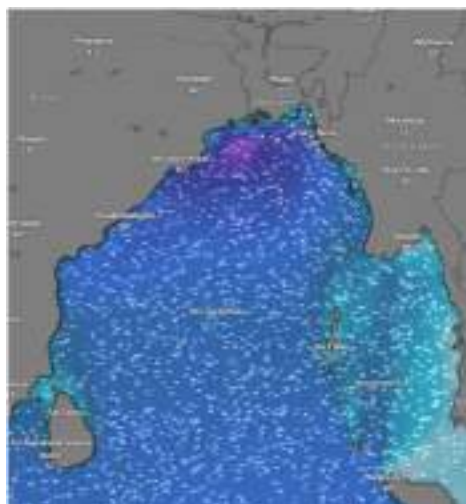
Date	Time	Air Temp (°C)		Sea Surface Temp (°C)	Baro Pressure (mbar)	Wind Direction	Wind Spd (kts)		Wave Ht (m)	Sea State	Humidity (%)	Prob of Rain (%)	Amount of Rain (mm)
		Max	Min				Gusting	Avg					
29-04-26 (Wednesday)	0001	31	26	28	1010	SE	15	11	1.0	3	89	22	0.0
	0600			27	1011	SE	26	18	0.9	3	91	18	0.0
	1200			29	1009	SSE	27	20	0.9	3	75	45	0.5
	1800			28	1008	SSE	22	16	0.8	3	87	56	0.5
30-04-26 (Thursday)	0001	32	26	28	1009	SSE	23	17	0.8	3	89	36	0.3
	0600			27	1010	SSE	22	16	0.8	3	91	28	0.2
	1200			30	1008	SSW	28	22	0.9	3	75	22	0.1
	1800			28	1007	SSE	27	20	0.8	3	87	45	0.5
01-05-26 (Friday)	0001	32	26	28	1007	SSW	22	17	0.8	3	89	51	0.5
	0600			27	1008	SSE	24	18	0.9	3	91	36	0.3
	1200			30	1006	SSW	28	20	1.0	3	74	22	0.1
	1800			28	1005	SE	26	18	0.9	3	88	42	0.4
02-05-26 (Saturday)	0001	32	26	28	1007	SSE	28	20	0.9	3	90	35	0.3
	0600			27	1008	SSE	22	17	0.8	3	91	28	0.1
	1200			30	1006	SW	17	13	0.8	3	74	22	0.1
	1800			28	1005	SSE	29	23	0.8	3	86	46	0.5

29 Apr 2026

30 Apr 2026

01 May 2026

02 May 2026



Significant wave height (m)



MARINE WEATHER FORECAST (29 April to 06 May 2026)

ABEAM TO KUTUBDIA (21° 51' N, 091° 40' E)



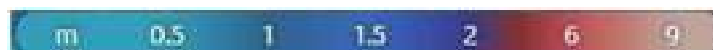
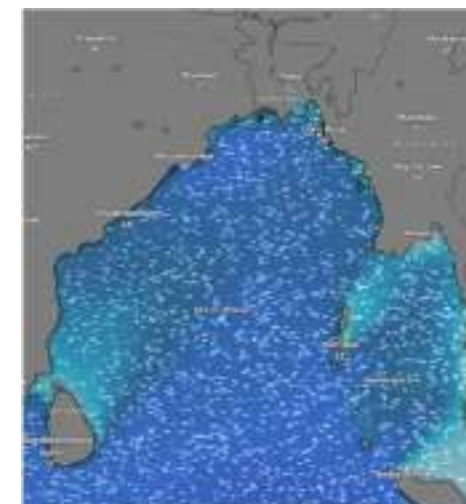
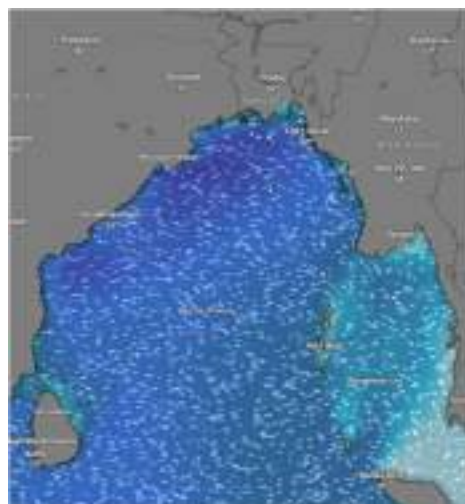
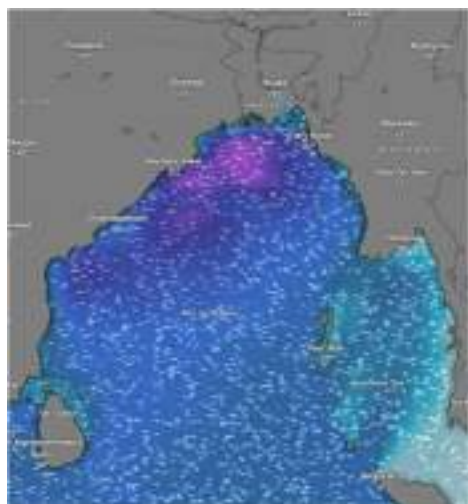
Date	Time	Air Temp (°C)		Sea Surface Temp (°C)	Baro Pressure (mbar)	Wind Direction	Wind Spd (kts)		Wave Ht (m)	Sea State	Humidity (%)	Prob of Rain (%)	Amount of Rain (mm)
		Max	Min				Gusting	Avg					
03-05-26 (Sunday)	0001	32	26	28	1007	SSE	29	22	1.0	3	90	34	0.2
	0600			27	1008	SSE	28	21	1.0	3	92	24	0.1
	1200			30	1006	SSW	29	22	0.9	3	76	20	0.1
	1800			28	1005	SSE	27	19	0.8	3	87	30	0.2
04-05-26 (Monday)	0001	32	26	28	1009	SSE	27	17	0.8	3	91	35	0.2
	0600			27	1010	SE	26	17	0.8	3	90	26	0.1
	1200			30	1008	SSW	20	10	0.8	3	77	23	0.1
	1800			28	1007	SSE	26	21	0.7	3	89	31	0.2
05-05-26 (Tuesday)	0001	32	26	28	1009	S	22	16	0.8	3	90	24	0.1
	0600			27	1010	SSE	20	15	0.7	3	92	15	0.0
	1200			30	1008	SE	14	10	0.8	3	76	32	0.2
	1800			28	1007	SSW	16	12	0.8	3	88	28	0.1
06-05-26 (Wednesday)	0001	32	26	28	1009	SSW	16	12	0.6	3	89	22	0.0
	0600			27	1010	SSE	18	14	0.6	3	90	16	0.0
	1200			30	1008	SSE	18	14	0.6	3	74	10	0.0
	1800			28	1007	SSW	13	09	0.5	3	85	13	0.0

03 May 2026

04 May 2026

05 May 2026

06 May 2026



Significant wave height (m)



MARINE WEATHER FORECAST (29 April to 06 May 2026)

ABEAM TO ELEPHANT POINT (21° 11' N, 091° 52' E)



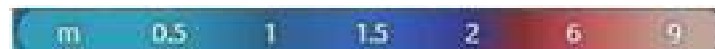
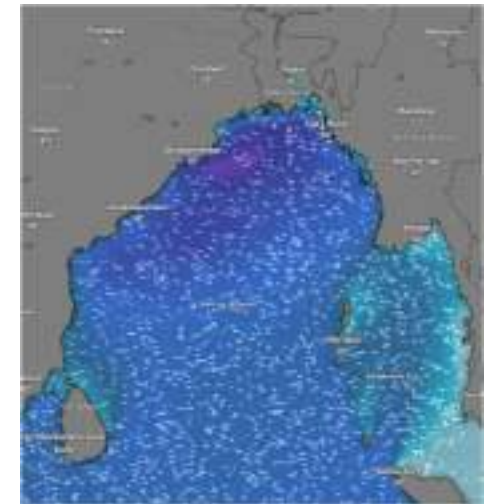
Date	Time	Air Temp (°C)		Sea Surface Temp (°C)	Baro Pressure (mbar)	Wind Direction	Wind Spd (kts)		Wave Ht (m)	Sea State	Humidity (%)	Prob of Rain (%)	Amount of Rain (mm)
		Max	Min				Gusting	Avg					
29-04-26 (Wednesday)	0001	31	26	28	1010	SSE	18	14	1.9	4	89	23	0.0
	0600			27	1011	SSE	16	12	1.7	4	91	20	0.0
	1200			29	1009	SSW	17	13	1.6	4	76	37	0.4
	1800			28	1008	E	22	16	1.6	4	85	45	0.5
30-04-26 (Thursday)	0001	32	26	28	1009	SSE	20	15	1.6	4	90	32	0.2
	0600			27	1010	SSE	22	16	1.5	4	91	28	0.1
	1200			30	1008	SSE	13	09	1.4	4	77	22	0.1
	1800			28	1007	SSE	16	12	1.4	4	88	45	0.5
01-05-26 (Friday)	0001	32	26	28	1007	W	13	09	1.3	4	90	15	0.0
	0600			27	1008	SSE	22	16	1.5	4	92	21	0.0
	1200			30	1006	S	27	20	1.6	4	74	10	0.0
	1800			28	1005	W	15	11	1.6	4	86	16	0.0
02-05-26 (Saturday)	0001	32	26	28	1007	SSE	26	18	1.6	4	90	35	0.3
	0600			27	1008	SSE	22	16	1.6	4	91	28	0.1
	1200			30	1006	S	15	11	1.6	4	75	22	0.1
	1800			28	1005	SSE	18	14	1.6	4	84	46	0.5

29 Apr 2026

30 Apr 2026

01 May 2026

02 May 2026



Significant wave height (m)



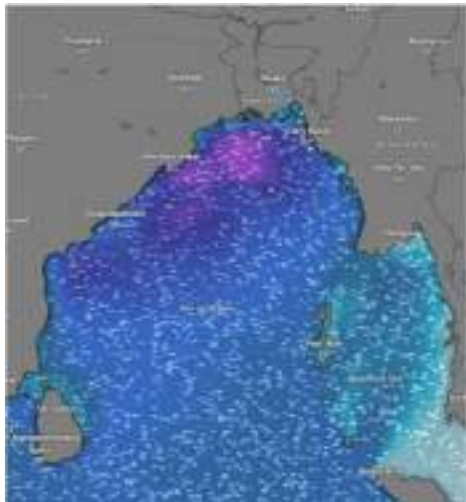
MARINE WEATHER FORECAST (29 April to 06 May 2026)

ABEAM TO ELEPHANT POINT (21° 11' N, 091° 52' E)



Date	Time	Air Temp (°C)		Sea Surface Temp (°C)	Baro Pressure (mbar)	Win Direction	Wind Spd (kts)		Wave Ht (m)	Sea State	Humidity (%)	Prob of Rain (%)	Amount of Rain (mm)
		Max	Min				Gusting	Avg					
03-05-26 (Sunday)	0001	32	26	28	1007	SSE	26	18	1.7	4	90	34	0.2
	0600			27	1008	S	25	17	1.7	4	91	24	0.1
	1200			30	1006	S	26	18	1.6	4	76	20	0.1
	1800			28	1005	SE	16	12	1.6	4	87	30	0.2
04-05-26 (Monday)	0001	32	26	28	1009	SSE	27	18	1.6	4	88	31	0.2
	0600			27	1010	S	22	12	1.6	4	90	23	0.1
	1200			30	1008	S	21	13	1.6	4	78	22	0.1
	1800			28	1007	SE	25	16	1.5	4	84	32	0.2
05-05-26 (Tuesday)	0001	32	26	28	1009	SSW	14	10	1.2	3	90	13	0.0
	0600			27	1010	SE	15	11	1.2	3	91	24	0.1
	1200			30	1008	SE	12	08	1.1	3	75	26	0.1
	1800			28	1007	SSW	13	09	1.1	3	87	15	0.0
06-05-26 (Wednesday)	0001	32	26	28	1009	SSW	13	09	1.1	3	89	13	0.0
	0600			27	1010	SSE	17	13	1.1	3	90	16	0.0
	1200			30	1008	SSE	15	11	1.1	3	74	09	0.0
	1800			28	1007	SSW	12	08	1.0	3	86	13	0.0

03 May 2026



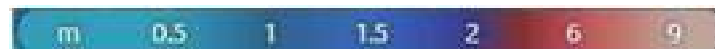
04 May 2026



05 May 2026



06 May 2026



Significant wave height (m)



MARINE WEATHER FORECAST (29 April to 06 May 2026)

ABEAM TO ST. MARTIN'S LIGHT HOUSE (20° 37' N, 092° 08' E)



Date	Time	AirTemp (°C)		Sea Surface Temp (°C)	Baro Pressure (mbar)	Wind Direction	Wind Spd (kts)		Wave Ht (m)	Sea State	Humidity (%)	Prob of Rain (%)	Amount of Rain (mm)
		Max	Min				Gusting	Avg					
29-04-26 (Wednesday)	0001	31	26	28	1010	SSE	22	16	1.6	4	89	12	0.0
	0600			27	1011	E	16	12	1.6	4	91	16	0.0
	1200			29	1009	S	14	14	1.5	4	76	40	0.4
	1800			28	1008	SE	22	16	1.5	4	87	36	0.3
30-04-26 (Thursday)	0001	32	26	28	1009	S	23	17	1.5	4	90	12	0.0
	0600			27	1010	SSE	15	11	1.4	4	89	15	0.0
	1200			30	1008	SSE	16	12	1.4	4	76	09	0.0
	1800			28	1007	S	14	10	1.4	4	87	24	0.1
01-05-26 (Friday)	0001	32	26	28	1007	S	14	10	1.3	4	90	20	0.0
	0600			27	1008	SSE	18	14	1.3	4	89	24	0.1
	1200			30	1006	SSW	16	12	1.4	4	76	12	0.0
	1800			28	1005	SSW	20	15	1.5	4	87	22	0.1
02-05-26 (Saturday)	0001	32	26	28	1007	SSE	18	14	1.6	4	90	35	0.3
	0600			27	1008	S	14	10	1.6	4	92	28	0.1
	1200			30	1006	S	20	15	1.6	4	75	22	0.1
	1800			28	1005	SE	15	11	1.5	4	86	46	0.5

29 Apr 2026



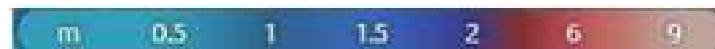
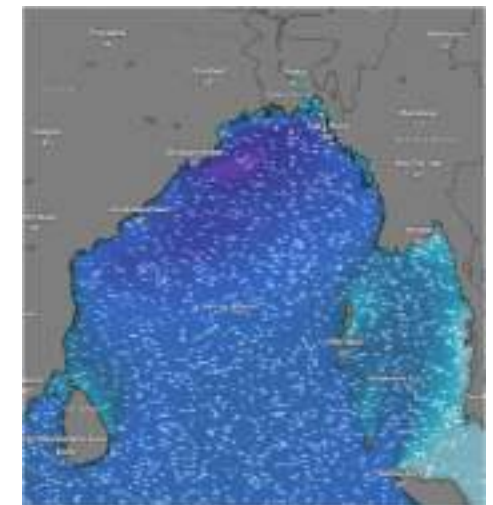
30 Apr 2026



01 May 2026



02 May 2026



Significant wave height (m)

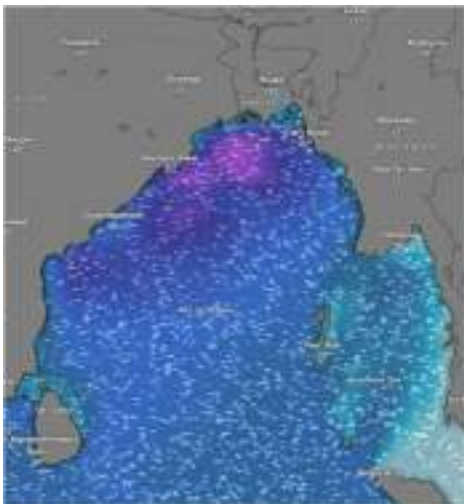


MARINE WEATHER FORECAST (29 April to 06 May 2026) ABEAM TO ST. MARTIN'S LIGHT HOUSE (20° 37' N, 092° 08' E)



Date	Time	Air Temp (°C)		Sea Surface Temp (°C)	Baro Pressure (mbar)	Wind Direction	Wind Spd (kts)		Wave Ht (m)	Sea State	Humidity (%)	Prob of Rain (%)	Amount of Rain (mm)
		Max	Min				Gusting	Avg					
03-05-26 (Sunday)	0001	32	26	28	1007	SSW	12	07	1.6	4	90	34	0.2
	0600			27	1008	SSE	16	12	1.5	4	92	24	0.1
	1200			30	1006	S	18	14	1.6	4	75	20	0.1
	1800			28	1005	SE	14	10	1.7	4	86	30	0.2
04-05-26 (Monday)	0001	32	26	28	1009	SSW	24	13	1.7	4	88	32	0.2
	0600			27	1010	SSE	18	10	1.6	4	90	24	0.1
	1200			30	1008	S	18	11	1.6	4	76	30	0.2
	1800			28	1007	SE	30	14	1.4	4	85	20	0.1
05-05-26 (Tuesday)	0001	32	26	28	1009	SSW	18	11	1.4	4	87	31	0.2
	0600			27	1010	SSE	15	08	1.3	4	91	22	0.1
	1200			30	1008	S	12	05	1.3	4	79	32	0.2
	1800			28	1007	SE	14	10	1.2	3	86	21	0.1
06-05-26 (Wednesday)	0001	32	26	28	1009	SW	11	07	1.0	4	89	12	0.0
	0600			27	1010	S	13	09	1.0	4	90	20	0.0
	1200			30	1008	E	10	05	1.0	4	74	15	0.0
	1800			28	1007	W	11	06	1.0	3	85	18	0.0

03 May 2026



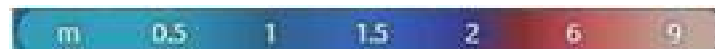
04 May 2026



05 May 2026



06 May 2026



Significant wave height (m)



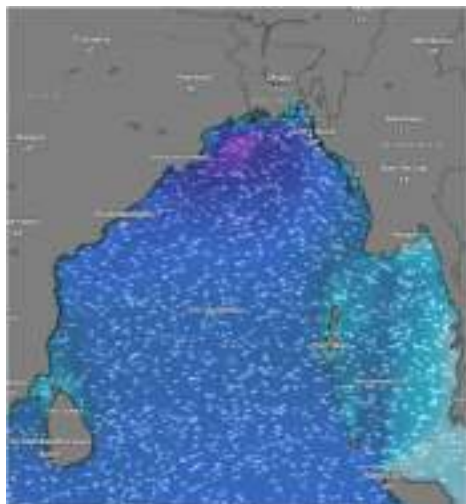
MARINE WEATHER FORECAST (29 April to 06 May 2026)

PAYRA FAIRWAY (21° 22' N, 090° 6' E)



Date	Time	Air Temp (°C)		Sea Surface Temp (°C)	Baro Pressure (mbar)	Wind Direction	Wind Spd (kts)		Wave Ht (m)	Sea State	Humidity (%)	Prob of Rain (%)	Amount of Rain (mm)
		Max	Min				Gusting	Avg					
29-04-26 (Wednesday)	0001	31	26	28	1010	SSW	28	20	2.3	4	91	22	0.1
	0600			27	1011	SSW	25	17	2.2	4	93	54	0.5
	1200			29	1009	SSW	28	20	2.1	4	75	36	0.4
	1800			28	1008	SW	20	15	2.0	4	86	28	0.2
30-04-26 (Thursday)	0001	32	26	28	1009	SSW	27	20	2.0	4	89	23	0.1
	0600			27	1010	SSW	14	10	1.9	4	90	25	0.2
	1200			30	1008	SSW	22	16	1.7	4	75	14	0.0
	1800			28	1007	SW	28	25	1.8	4	86	19	0.0
01-05-26 (Friday)	0001	32	26	28	1007	SSW	18	14	1.8	4	89	23	0.1
	0600			27	1008	S	17	13	1.8	4	90	25	0.2
	1200			30	1006	SW	22	18	2.0	4	75	14	0.0
	1800			28	1005	SW	23	17	2.0	4	86	36	0.3
02-05-26 (Saturday)	0001	32	26	28	1007	S	14	10	1.8	4	90	33	0.2
	0600			27	1008	SSW	15	15	1.8	4	91	24	0.1
	1200			30	1006	SW	28	20	1.9	4	74	15	0.0
	1800			28	1005	SE	26	18	2.0	4	85	22	0.1

29 Apr 2026



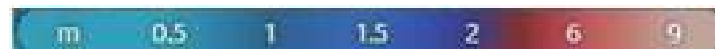
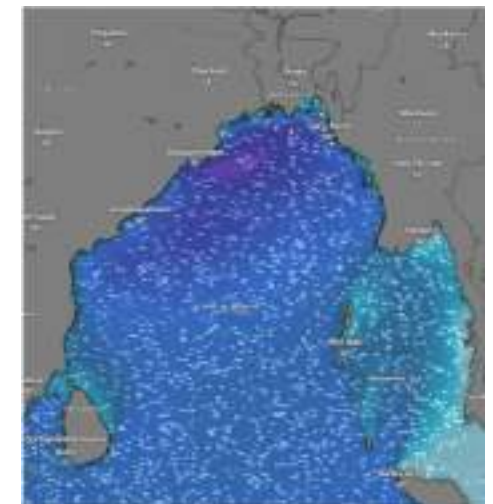
30 Apr 2026



01 May 2026



02 May 2026



Significant wave height (m)



MARINE WEATHER FORECAST (29 April to 06 May 2026)



PAYRA FAIRWAY (21° 22' N, 090° 6' E)

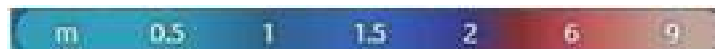
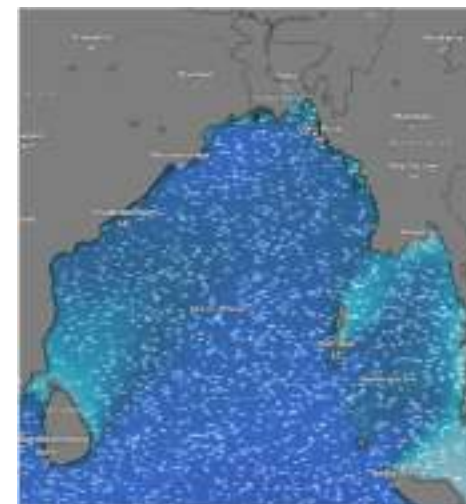
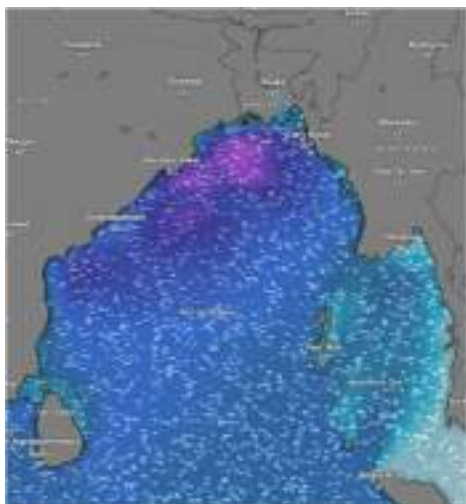
Date	Time	Air Temp (°C)		Sea Surface Temp (°C)	Baro Pressure (mbar)	Wind Direction	Wind Spd (kts)		Wae Ht (m)	Sea State	Humidity (%)	Prob of Rain (%)	Amount of Rain (mm)
		Max	Min				Gusting	Avg					
03-05-26 (Sunday)	0001	32	26	28	1007	SE	16	12	2.2	4	90	32	0.2
	0600			27	1008	SW	24	17	2.3	4	91	24	0.1
	1200			30	1006	SSW	25	17	2.3	4	74	15	0.0
	1800			28	1005	SSW	20	15	2.1	4	85	22	0.1
04-05-26 (Monday)	0001	32	26	28	1009	SE	28	21	2.1	4	87	30	0.2
	0600			27	1010	SW	28	19	2.1	4	90	26	0.1
	1200			30	1008	SSW	26	20	1.9	4	78	25	0.1
	1800			28	1007	SSW	27	15	1.9	4	85	29	0.2
05-05-26 (Tuesday)	0001	32	26	28	1009	SE	29	19	1.8	4	89	31	0.2
	0600			27	1010	SW	27	12	1.9	4	91	24	0.1
	1200			30	1008	SW	19	14	1.5	4	74	25	0.1
	1800			28	1007	SSW	20	10	1.5	4	84	30	0.2
06-05-26 (Wednesday)	0001	32	26	28	1009	SW	16	12	1.4	4	89	22	0.0
	0600			27	1010	SW	27	19	1.4	4	91	20	0.0
	1200			30	1008	S	14	10	1.3	4	74	09	0.0
	1800			28	1007	SW	15	11	1.3	4	84	12	0.0

03 May 2026

04 May 2026

05 May 2026

06 May 2026



Significant wave height (m)



MARINE WEATHER FORECAST (29 April to 06 May 2026) MONGLA FAIRWAY (21° 26' N, 089° 34' E)



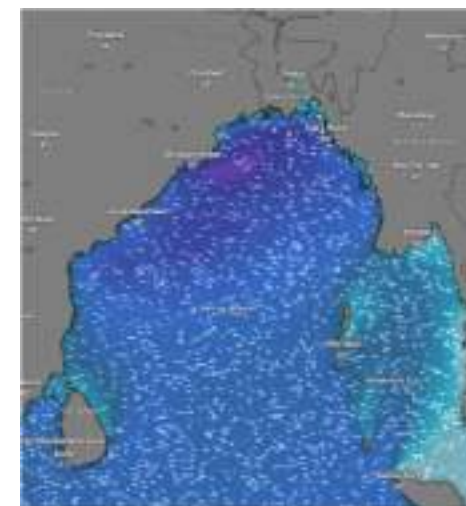
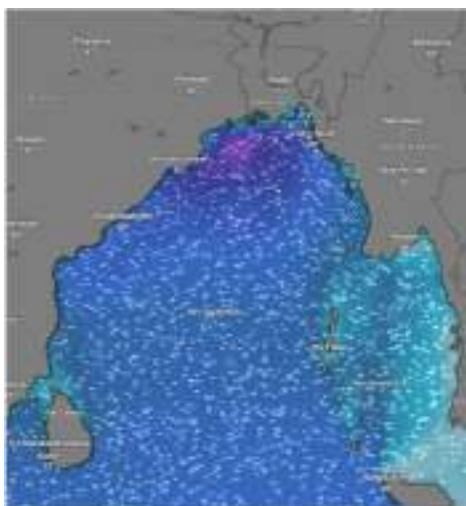
Date	Time	Air Temp (°C)		Sea Surface Temp (°C)	Baro Pressure (mbar)	Wind Direction	Wind Spd (kts)		Wave Ht (m)	Sea State	Humidity (%)	Prob of Rain (%)	Amount of Rain (mm)
		Max	Min				Gusting	Avg					
29-04-26 (Wednesday)	0001	31	26	28	1010	SSW	29	24	2.6	5	91	10	0.0
	0600			27	1011	SSW	22	16	2.3	4	93	15	0.0
	1200			29	1009	SSW	26	18	2.1	4	78	09	0.0
	1800			28	1008	SW	27	20	2.2	4	86	13	0.0
30-04-26 (Thursday)	0001	32	26	28	1009	SSW	26	17	2.0	4	91	13	0.0
	0600			27	1010	SW	17	13	1.9	4	90	20	0.1
	1200			30	1008	SW	23	18	1.8	4	74	12	0.0
	1800			28	1007	SE	22	16	1.9	4	82	26	0.1
01-05-26 (Friday)	0001	32	26	28	1007	S	18	14	1.9	4	91	15	0.0
	0600			27	1008	SSW	26	17	1.9	4	90	24	0.1
	1200			30	1006	SSW	21	15	1.9	4	76	16	0.0
	1800			28	1005	W	22	15	2.0	4	87	31	0.2
02-05-26 (Saturday)	0001	32	26	28	1007	S	14	10	1.8	4	91	30	0.2
	0600			27	1008	SSW	18	14	1.8	4	90	24	0.1
	1200			30	1006	SW	27	20	2.0	4	74	15	0.0
	1800			28	1005	W	18	14	2.1	4	86	28	0.1

29 Apr 2026

30 Apr 2026

01 May 2026

02 May 2026



Significant wave height (m)



MARINE WEATHER FORECAST (29 April to 06 May 2026)

MONGLA FAIRWAY (21° 26' N, 089° 34' E)



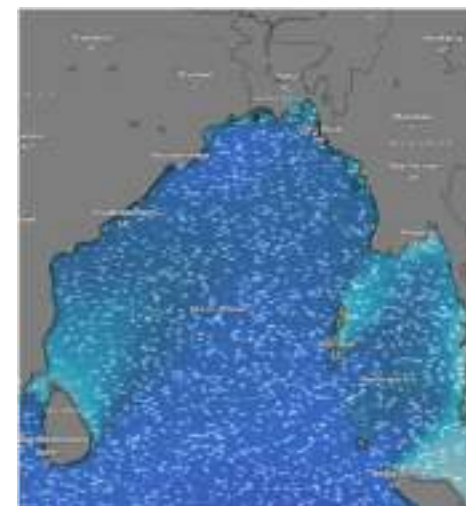
Date	Time	Air Temp (°C)		Sea Surface Temp (°C)	Baro Pressure (mbar)	Wind Direction	Wind Spd (kts)		Wave Ht (m)	Sea State	Humidity (%)	Prob of Rain (%)	Amount of Rain (mm)
		Max	Min				Gusting	Avg					
03-05-26 (Sunday)	0001	32	26	28	1007	SW	26	18	2.1	4	91	10	0.0
	0600			27	1008	SSW	25	17	2.2	4	93	22	0.1
	1200			30	1006	SSW	27	19	2.3	4	76	13	0.0
	1800			28	1005	SSW	28	20	2.1	4	85	32	0.2
04-05-26 (Monday)	0001	32	26	28	1009	SW	26	18	2.1	4	87	31	0.2
	0600			27	1010	SSW	25	17	2.2	4	91	30	0.2
	1200			30	1008	SSW	27	19	2.3	4	90	24	0.1
	1800			28	1007	SSW	28	20	2.1	4	77	25	0.1
05-05-26 (Tuesday)	0001	32	26	28	1009	SW	28	21	2.0	4	86	32	0.2
	0600			27	1010	SSW	29	15	1.8	4	90	31	0.2
	1200			30	1008	SSW	20	14	1.7	4	87	23	0.1
	1800			28	1007	SSW	23	16	1.7	4	78	24	0.1
06-05-26 (Wednesday)	0001	32	26	28	1009	SW	14	10	1.6	4	89	32	0.1
	0600			27	1010	SSW	26	18	1.5	4	91	24	0.1
	1200			30	1008	SSW	17	13	1.3	4	85	15	0.1
	1800			28	1007	SSW	16	12	1.4	3	76	20	0.1

03 May 2026

04 May 2026

05 May 2026

06 May 2026



Significant wave height (m)



MARINE WEATHER FORECAST (29 April to 06 May 2026)

OUTER EEZ (18° 48' N, 090° 30' E)



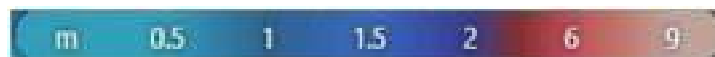
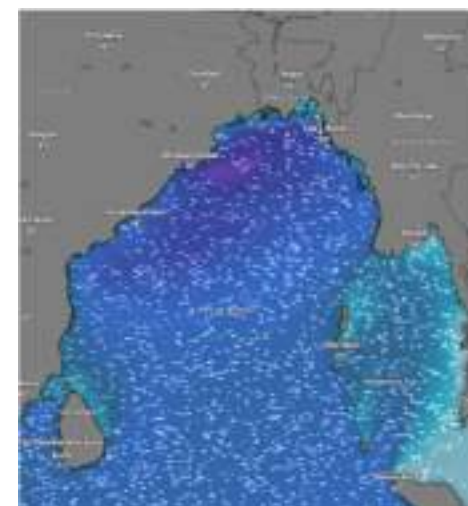
Date	Time	Air Temp (°C)		Sea Surface Temp (°C)	Baro Pressure (mbar)	Wind Direction	Wind Spd (kts)		Wave Ht (m)	Sea State	Humidity (%)	Prob of Rain (%)	Amount of Rain (mm)
		Max	Min				Gusting	Avg					
29-04-26 (Wednesday)	0001	31	26	28	1008	SSE	16	12	1.7	4	90	10	0.0
	0600			27	1009	SSW	20	15	1.7	4	92	22	0.0
	1200			29	1007	SSW	21	15	1.8	4	76	09	0.0
	1800			28	1006	SSW	22	17	1.8	4	87	16	0.0
30-04-26 (Thursday)	0001	32	26	28	1010	SSW	13	09	1.7	4	88	13	0.0
	0600			27	1011	SSW	21	15	1.7	4	90	29	0.2
	1200			30	1009	SSW	14	10	1.6	4	76	16	0.0
	1800			28	1008	SW	17	13	1.5	4	87	23	0.1
01-05-26 (Friday)	0001	31	25	28	1009	SW	16	13	1.5	4	89	20	0.0
	0600			27	1010	SSW	14	10	1.6	4	90	32	0.2
	1200			30	1008	SSW	22	17	1.7	4	76	15	0.0
	1800			28	1007	SSW	13	09	1.9	4	87	24	0.1
02-05-26 (Saturday)	0001	31	25	28	1007	SSW	27	20	2.1	4	90	24	0.1
	0600			27	1008	SSW	26	19	1.8	4	91	32	0.2
	1200			30	1006	SW	22	17	1.8	4	74	16	0.0
	1800			28	1005	SW	27	20	1.8	4	86	22	0.1

29 Apr 2026

30 Apr 2026

01 May 2026

02 May 2026



Significant wave height (m)



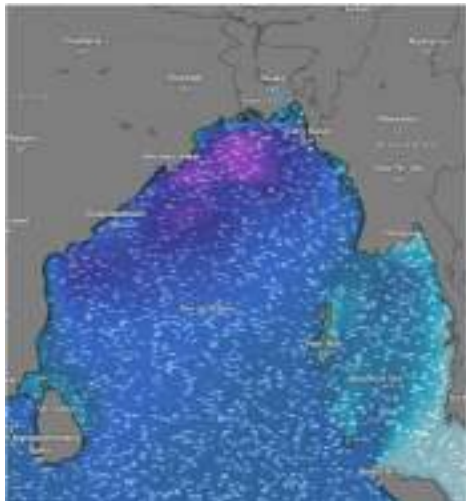
MARINE WEATHER FORECAST (29 April to 06 May 2026)

OUTER EEZ (18° 48' N, 090° 30' E)



Date	Time	Air Temp (°C)		Sea Surface Temp (°C)	Baro Pressure (mbar)	Wind Direction	Wind Spd (kts)		Wave Ht (m)	Sea State	Humidity (%)	Prob of Rain (%)	Amount of Rain (mm)
		Max	Min				Gusting	Avg					
03-05-26 (Sunday)	0001	31	25	28	1008	SSW	25	17	1.9	4	90	32	0.2
	0600			27	1009	W	14	10	1.9	4	92	24	0.1
	1200			30	1007	SW	26	18	1.9	4	75	15	0.0
	1800			28	1006	SSW	25	17	1.8	4	87	26	0.1
04-05-26 (Monday)	0001	31	25	28	1007	SSW	17	08	1.8	4	89	32	0.2
	0600			27	1008	W	20	13	1.8	4	91	28	0.1
	1200			30	1006	SW	25	16	1.8	4	75	22	0.1
	1800			28	1005	SSW	23	15	1.7	4	88	25	0.1
05-05-26 (Tuesday)	0001	31	25	28	1009	SSW	22	14	1.5	4	87	31	0.2
	0600			27	1010	W	20	16	1.5	4	91	22	0.1
	1200			30	1008	SW	21	11	1.4	4	76	24	0.1
	1800			28	1007	SSW	15	10	1.4	4	88	26	0.1
06-05-26 (Wednesday)	0001	31	25	28	1009	SW	12	08	1.2	3	89	12	0.0
	0600			27	1010	SSW	13	09	1.2	3	90	24	0.1
	1200			30	1008	SW	14	10	1.1	3	74	10	0.0
	1800			28	1007	SW	13	09	1.2	3	87	20	0.0

03 May 2026



04 May 2026



05 May 2026



06 May 2026



Significant wave height (m)



PREDICTED SURFACE PRESSURE FORECAST (29 April to 05 May 2026)



29 Apr 2026



30 Apr 2026



01 May 2026



02 May 2026



03 May 2026



04 May 2026



05 May 2026

