



SUMMARY OF MARINE WEATHER FORECAST
COASTAL AREA OF BANGLADESH
DATE: 28 Nov to 05 Dec 2024



Fleet forecast	<p>The Deep Depression over Southwest Bay of Bengal and adjoining area moved slightly north-northwestwards now lies over the same area (near Lat: 9.0°N & Long: 82.1°E)</p> <p>It is very likely to continue to move nearly north-northwestwards skirting Sri Lanka coast and intensify into a cyclonic storm during next 12 hours. Thereafter, it will continue to move north northwestwards and cross north Tamil Nadu-Puducherry coasts between Karaikal and Mahabalipuram around 0300 UTC of 30th November as a deep depression.</p> <p>Maritime Ports of Chattogram, Cox's Bazar, Mongla & Payra have been advised to keep HOISTED DISTANT CAUTIONARY SIGNAL NO. ONE (R) ONE</p>
Wind direction, speed	North/north-easterly 7 kts, (Temporary gusting up to 18 kts).
Wave height & sea state	Wave height: 0.1 to 1.6 m (Sea state:1 to 4).
Sea surface temperature	20°C - 26°C (May remain nearly unchanged).
Baro pressure	1008-1014 mb
Rainfall	Light to moderate rain/thunder showers occur over Bay of Bengal & adjoining area.
Fog	Light to moderate fog may occur at places over the coastal area during late night till early morning.

Outlook for 28 Nov to 05 Dec 2024: Weather may remain mainly dry with temporary partly cloudy sky.



MARINE WEATHER FORECAST (28 Nov to 05 Dec 2024) NEAR AUTHORITY BUOY (22° 12' N, 091° 38' E)



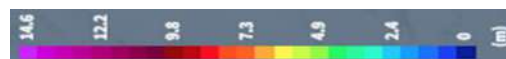
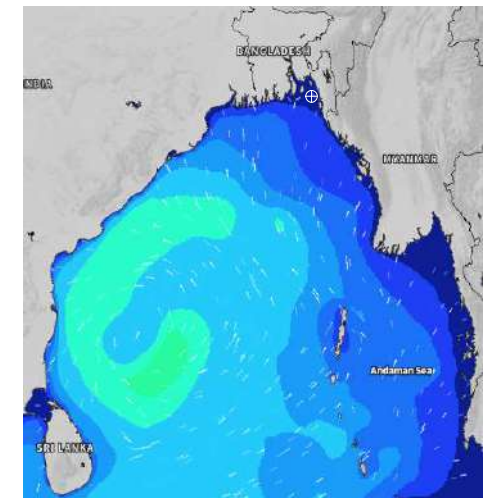
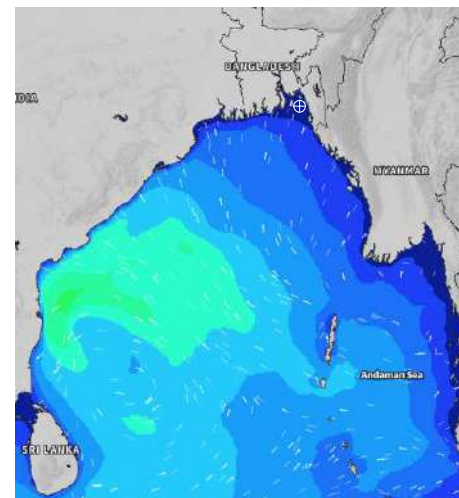
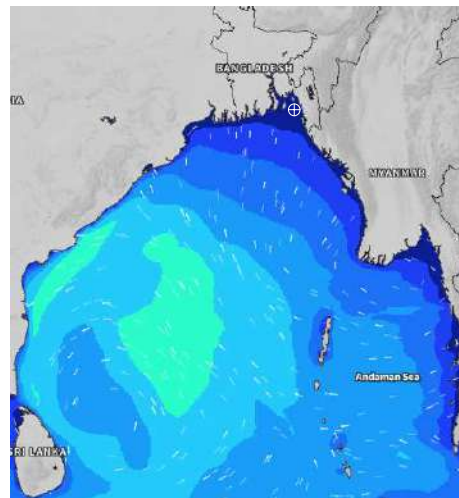
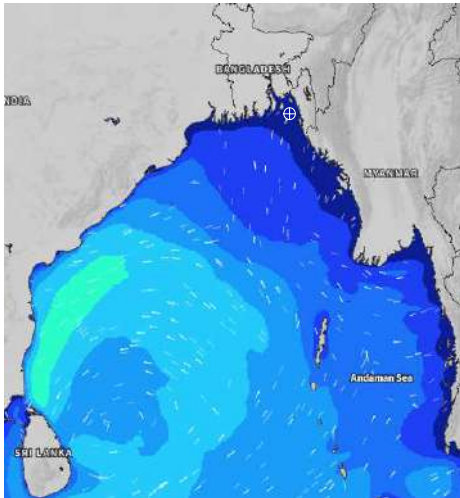
Date	Time	Air Temp (°C)		Sea Surface Temp (°C)	Baro Pressure (mbar)	Wind Direction	Wind Spd (kts)		Wave Ht (m)	Sea State	Humidity (%)	Prob of Rain
		Max	Min				Max	Avg				
28-11-24 (Thursday)	0001	28	20	21	1013	NE	8	7	0.1	1	82	10% (0.0 mm)
	0600			20	1013	NE	8	7	0.1	1	86	12% (0.0 mm)
	1200			21	1013	NW	5	4	0.1	1	52	10% (0.0 mm)
	1800			24	1014	NW	4	3	0.1	1	63	10% (0.0 mm)
29-11-24 (Friday)	0001	26	21	22	1014	NNE	4	3	0.1	1	80	10% (0.0 mm)
	0600			22	1013	E	7	6	0.1	1	84	11% (0.0 mm)
	1200			21	1012	NE	5	4	0.1	1	51	10% (0.0 mm)
	1800			21	1012	NE	3	2	0.1	1	63	10% (0.0 mm)
30-11-24 (Saturday)	0001	27	22	22	1011	NE	6	5	0.1	1	79	10% (0.0 mm)
	0600			21	1010	ENE	7	6	0.1	1	85	11% (0.0 mm)
	1200			22	1009	NE	8	7	0.1	1	52	10% (0.0 mm)
	1800			22	1010	NE	7	6	0.1	1	64	10% (0.0 mm)
01-12-24 (Sunday)	0001	27	22	22	1010	NE	5	4	0.1	1	79	10% (0.0 mm)
	0600			22	1010	NE	8	7	0.1	1	85	11% (0.0 mm)
	1200			23	1009	ENE	6	5	0.1	1	52	10% (0.0 mm)
	1800			22	1008	E	4	3	0.1	1	64	10% (0.0 mm)

28 Nov 2024

29 Nov 2024

30 Nov 2024

01 Dec 2024



Significant wave height (m)



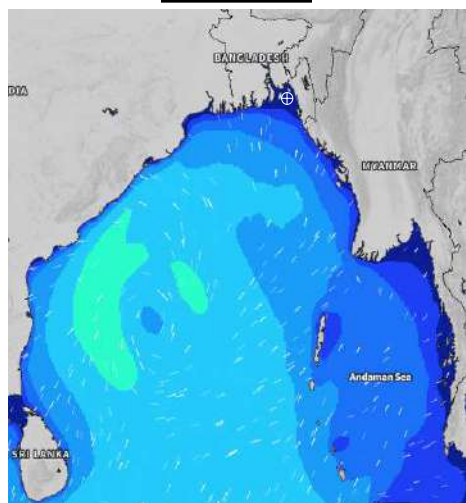
MARINE WEATHER FORECAST (28 Nov to 05 Dec 2024)

NEAR AUTHORITY BUOY (22° 12' N, 091° 38' E)

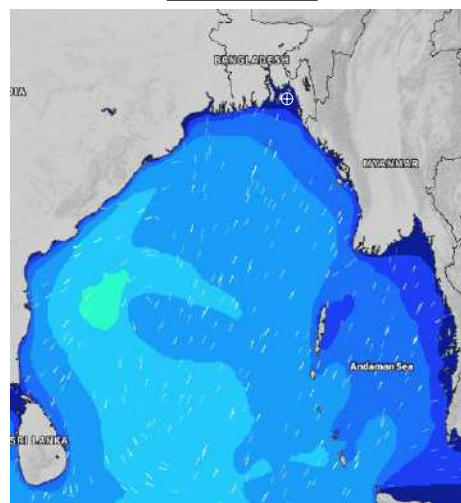


Date	Time	Air Temp (°C)		Sea Surface Temp (°C)	Baro Pressure (mbar)	Wind Direction	Wind Spd (kts)		Wave Ht (m)	Sea State	Humidity (%)	Prob of Rain
		Max	Min				Max	Avg				
02-12-24 (Monday)	0001	28	21	22	1009	NE	6	4	0.1	1	81	24% (0.0 mm)
	0600			22	1010	ENE	6	4	0.1	1	86	51% (0.3 mm)
	1200			22	1011	NNE	4	3	0.1	1	70	58% (0.5 mm)
	1800			22	1010	ENE	4	3	0.1	1	81	45% (0.3 mm)
03-12-24 (Tuesday)	0001	28	20	23	1011	ENE	5	4	0.1	1	90	50% (0.3 mm)
	0600			22	1010	NNE	6	5	0.1	1	89	56% (0.5 mm)
	1200			26	1010	NNW	6	5	0.1	1	72	44% (0.3 mm)
	1800			25	1009	NW	6	5	0.1	1	80	24% (0.0 mm)
04-12-24 (Wednesday)	0001	28	19	24	1011	NE	5	4	0.1	1	91	48% (0.3 mm)
	0600			24	1010	ENE	5	4	0.1	1	91	50% (0.3 mm)
	1200			25	1011	NNE	5	4	0.1	1	70	42% (0.3 mm)
	1800			26	1009	ENE	6	5	0.1	1	81	40% (0.2 mm)
05-12-24 (Thursday)	0001	28	19	24	1010	ENE	6	5	0.1	1	91	48% (0.3 mm)
	0600			24	1009	NNE	7	6	0.1	1	91	50% (0.3 mm)
	1200			26	1010	NNW	6	5	0.1	1	70	42% (0.3 mm)
	1800			25	1009	NW	4	3	0.1	1	81	40% (0.2 mm)

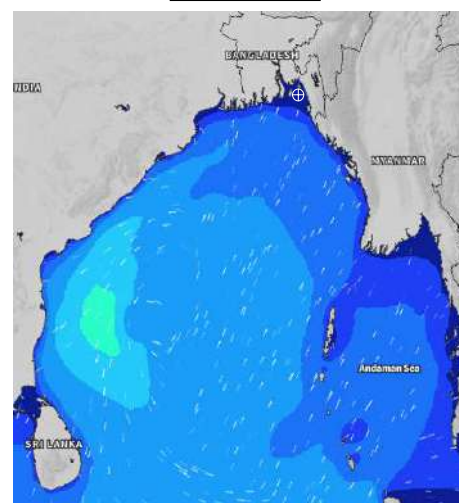
02 Dec 2024



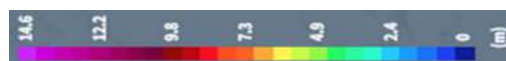
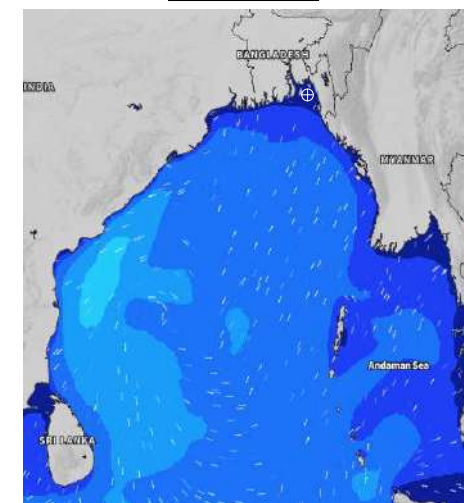
03 Dec 2024



04 Dec 2024



05 Dec 2024



Significant wave height (m)



MARINE WEATHER FORECAST (28 Nov to 05 Dec 2024)

20 NM WEST OF ELEPHANT POINT (21° 10' N, 091° 42' E)



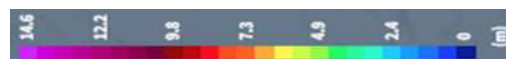
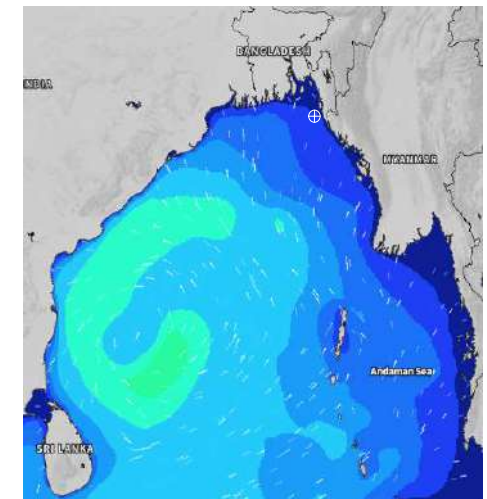
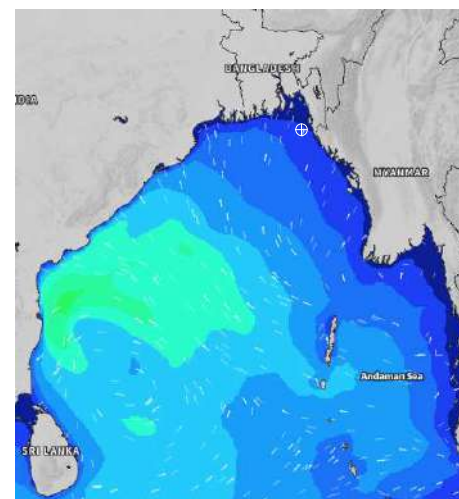
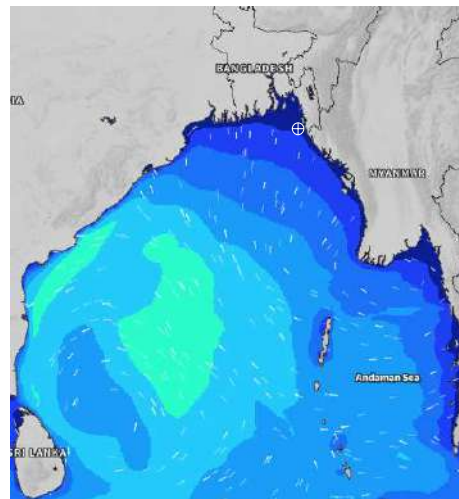
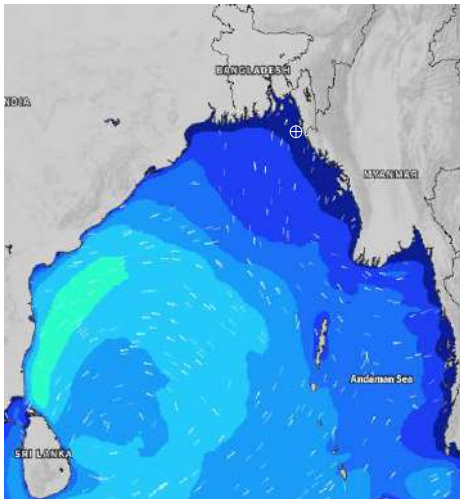
Date	Time	Air Temp (°C)		Sea Surface Temp (°C)	Baro Pressure (mbar)	Wind Direction	Wind Spd (kts)		Wave Ht (m)	Sea State	Humidity (%)	Prob of Rain
		Max	Min				Max	Avg				
28-11-24 (Thursday)	0001	28	19	25	1012	NNE	10	9	0.4	2	85	10% (0.0 mm)
	0600			23	1012	NNE	10	9	0.4	2	87	11% (0.0 mm)
	1200			24	1013	N	7	6	0.4	2	52	10% (0.0 mm)
	1800			25	1013	NNW	5	4	0.4	2	67	10% (0.0 mm)
29-11-24 (Friday)	0001	29	21	25	1013	N	6	5	0.4	2	84	10% (0.0 mm)
	0600			24	1013	NNE	6	5	0.4	2	86	10% (0.0 mm)
	1200			23	1011	N	9	8	0.4	2	52	11% (0.0 mm)
	1800			24	1012	NE	11	10	0.7	3	68	10% (0.0 mm)
30-11-24 (Saturday)	0001	27	23	24	1011	NE	7	6	0.8	3	82	10% (0.0 mm)
	0600			24	1010	E	9	8	0.8	3	84	10% (0.0 mm)
	1200			25	1009	ESE	7	6	0.8	3	52	10% (0.0 mm)
	1800			25	1009	ENE	8	7	0.8	3	69	11% (0.0 mm)
01-12-24 (Sunday)	0001	28	23	25	1010	NE	7	6	0.8	3	80	10% (0.0 mm)
	0600			24	1009	NE	8	7	0.8	3	84	10% (0.0 mm)
	1200			24	1009	E	6	5	0.8	3	52	10% (0.0 mm)
	1800			24	1008	ESE	6	5	0.8	3	71	11% (0.0 mm)

28 Nov 2024

29 Nov 2024

30 Nov 2024

01 Dec 2024



Significant wave height (m)



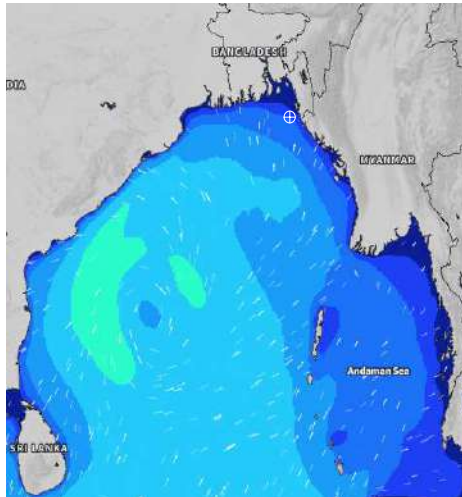
MARINE WEATHER FORECAST (28 Nov to 05 Dec 2024)

20 NM WEST OF ELEPHANT POINT (21° 10' N, 091° 42' E)

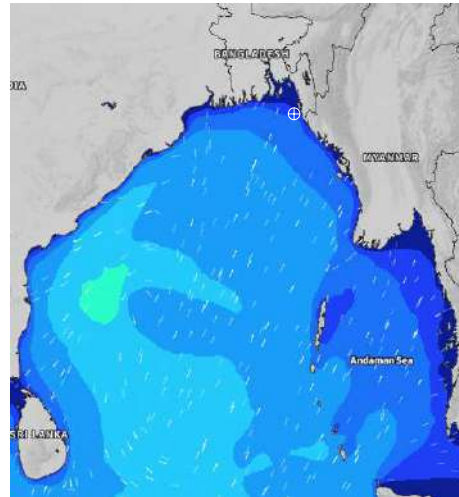


Date	Time	Air Temp (°C)		Sea Surface Temp (°C)	Baro Pressure (mbar)	Wind Direction	Wind Spd (kts)		Wave Ht (m)	Sea State	Humidity (%)	Prob of Rain
		Max	Min				Max	Avg				
02-12-24 (Monday)	0001	29	23	24	1010	ENE	12	11	0.7	3	80	12% (0.0 mm)
	0600			23	1010	E	5	4	0.9	3	81	10% (0.0 mm)
	1200			24	1011	ENE	8	7	1.1	3	55	11% (0.0 mm)
	1800			23	1010	ENE	5	4	1.1	3	73	12% (0.0 mm)
03-12-24 (Tuesday)	0001	28	23	24	1010	NE	4	3	1.2	3	81	35% (0.0 mm)
	0600			24	1010	NE	8	7	1.2	3	82	35% (0.2 mm)
	1200			25	1010	E	4	3	1.1	3	70	34% (0.2 mm)
	1800			26	1010	ESE	4	3	1.1	3	84	57% (0.5 mm)
04-12-24 (Wednesday)	0001	29	22	26	1010	NE	6	5	1.1	3	89	71% (0.5 mm)
	0600			25	1010	NE	6	5	1.0	3	89	58% (0.5 mm)
	1200			26	1010	E	8	7	1.0	3	74	48% (0.4 mm)
	1800			26	1009	ESE	6	5	1.0	3	79	35% (0.2 mm)
05-12-24 (Thursday)	0001	28	21	26	1010	NE	5	4	1.0	3	90	57% (0.2 mm)
	0600			26	1009	NE	7	6	0.9	3	90	43% (0.3 mm)
	1200			26	1010	E	7	6	0.9	3	72	35% (0.3 mm)
	1800			26	1009	ESE	4	3	0.9	3	82	37% (0.2 mm)

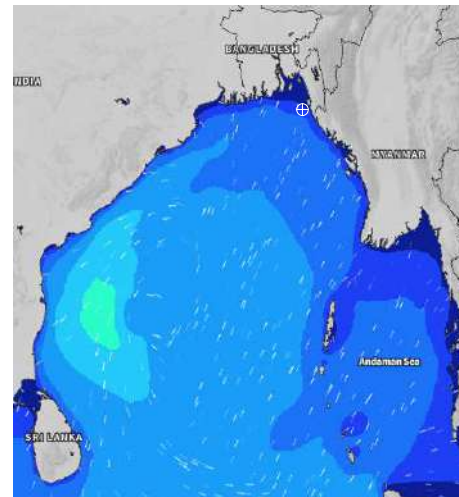
02 Dec 2024



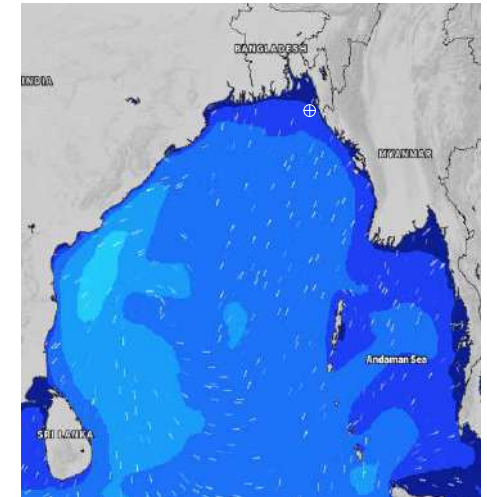
03 Dec 2024



04 Dec 2024



05 Dec 2024



Significant wave height (m)



MARINE WEATHER FORECAST (28 Nov to 05 Dec 2024)

15 NM WEST OF ST. MARTIN'S LIGHT HOUSE (20° 37' N, 092° 03' E)



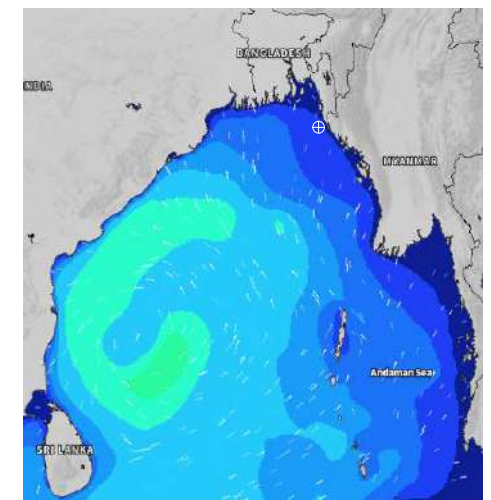
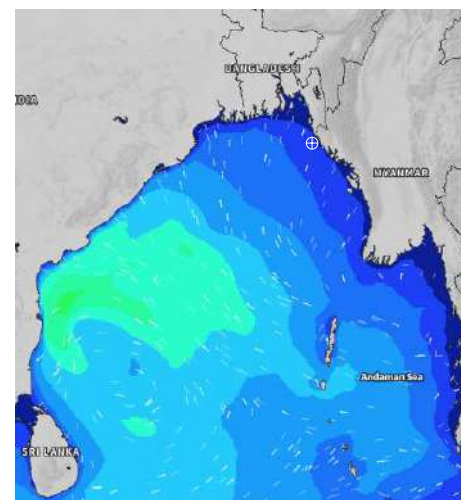
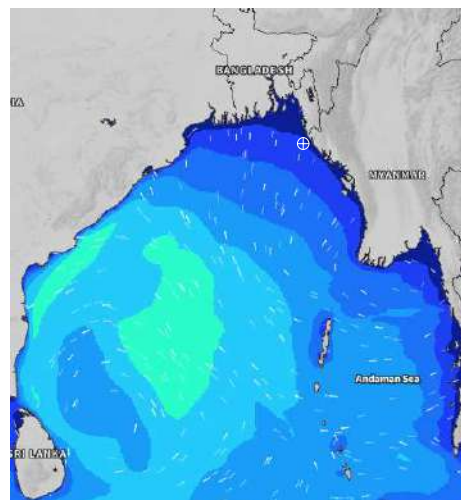
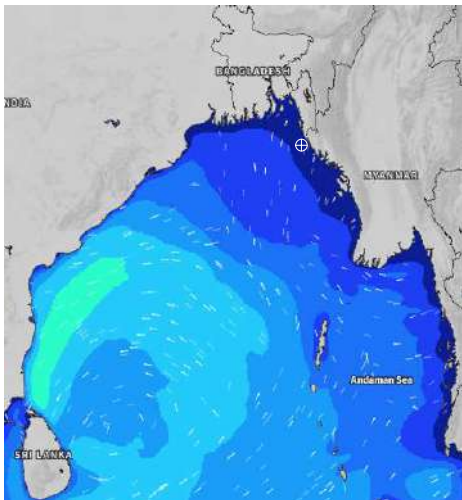
Date	Time	Air Temp (°C)		Sea Surface Temp (°C)	Baro Pressure (mbar)	Wind Direction	Wind Spd (kts)		Wave Ht (m)	Sea State	Humidity (%)	Prob of Rain
		Max	Min				Max	Avg				
28-11-24 (Thursday)	0001	28	20	25	1012	NNW	10	9	0.6	3	81	10% (0.0 mm)
	0600			24	1011	N	7	6	0.6	3	82	10% (0.0 mm)
	1200			24	1014	N	4	3	0.5	2	54	11% (0.0 mm)
	1800			26	1012	NNW	6	5	0.5	2	66	10% (0.0 mm)
29-11-24 (Friday)	0001	29	22	26	1013	N	6	5	0.5	2	76	12% (0.0 mm)
	0600			25	1012	NE	8	7	0.5	2	79	10% (0.0 mm)
	1200			25	1013	NNE	11	10	0.6	3	53	11% (0.0 mm)
	1800			25	1011	ENE	13	12	0.9	3	65	10% (0.0 mm)
30-11-24 (Saturday)	0001	27	23	26	1012	SE	8	7	1.1	3	77	11% (0.0 mm)
	0600			25	1010	ESE	9	8	1.1	3	80	10% (0.0 mm)
	1200			25	1011	ESE	4	3	1.0	3	54	11% (0.0 mm)
	1800			26	1009	SE	8	7	1.0	3	67	10% (0.0 mm)
01-12-24 (Sunday)	0001	28	23	26	1012	SE	8	7	1.1	3	79	11% (0.0 mm)
	0600			26	1010	ESE	9	8	1.1	3	80	10% (0.0 mm)
	1200			26	1011	ESE	4	3	1.1	3	54	11% (0.0 mm)
	1800			25	1009	SE	8	7	1.0	3	68	10% (0.0 mm)

28 Nov 2024

29 Nov 2024

30 Nov 2024

01 Dec 2024



Significant wave height (m)



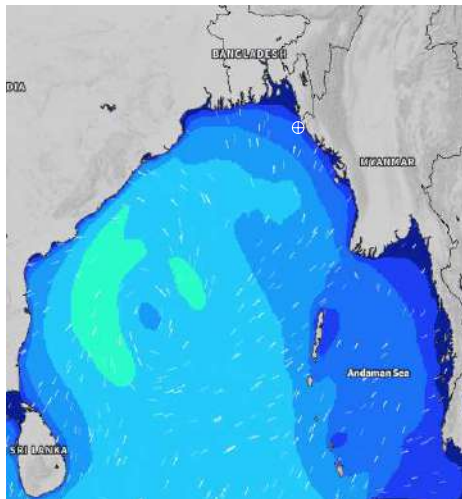
MARINE WEATHER FORECAST (28 Nov to 05 Dec 2024)

15 NM WEST OF ST. MARTIN'S LIGHT HOUSE (20° 37' N, 092° 03' E)

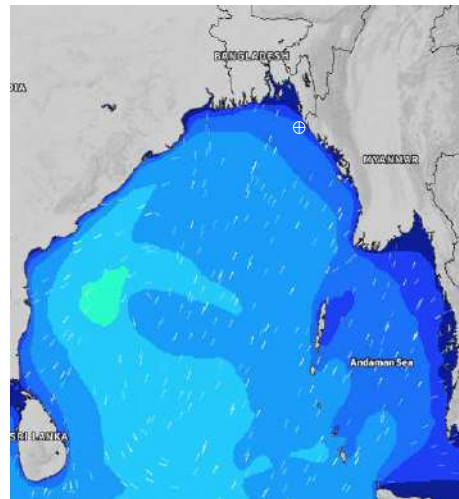


Date	Time	Air Temp (°C)		Sea Surface Temp (°C)	Baro Pressure (mbar)	Wind Direction	Wind Spd (kts)		Wave Ht (m)	Sea State	Humidity (%)	Prob of Rain
		Max	Min				Max	Avg				
02-12-24 (Monday)	0001	29	24	26	1010	NNE	13	12	1.0	3	77	10% (0.0 mm)
	0600			25	1008	ESE	16	15	1.4	4	76	11% (0.0 mm)
	1200			26	1011	ESE	18	16	1.4	4	58	10% (0.0 mm)
	1800			25	1009	ESE	13	12	1.5	4	72	11% (0.0 mm)
03-12-24 (Tuesday)	0001	29	23	25	1011	ESE	12	11	1.6	4	78	24% (0.0 mm)
	0600			25	1009	ESE	8	7	1.5	4	77	33% (0.2 mm)
	1200			25	1012	E	7	6	1.5	4	73	52% (0.4 mm)
	1800			25	1008	ENE	4	3	1.4	4	81	51% (0.5 mm)
04-12-24 (Wednesday)	0001	29	23	25	1011	SE	5	4	1.4	4	86	65% (0.5 mm)
	0600			24	1009	ESE	7	6	1.4	4	85	64% (0.5 mm)
	1200			25	1011	ESE	9	8	1.3	4	76	64% (1.5 mm)
	1800			26	1008	SE	5	4	1.3	4	71	52% (0.5 mm)
05-12-24 (Thursday)	0001	29	22	26	1011	ESE	5	4	1.3	4	86	55% (0.4 mm)
	0600			25	1008	ESE	4	3	1.2	3	86	51% (0.5 mm)
	1200			25	1011	SE	6	5	1.1	3	73	32% (0.2 mm)
	1800			26	1008	ESE	4	3	1.1	3	78	28% (0.1 mm)

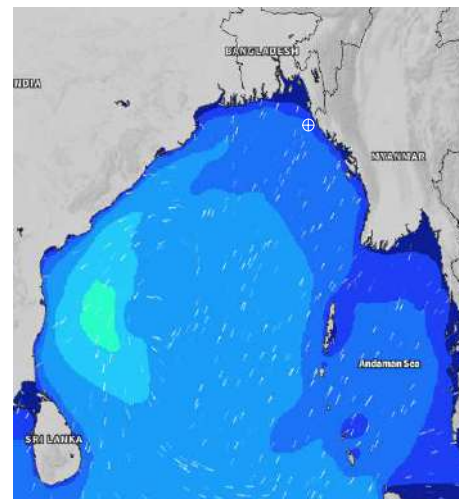
02 Dec 2024



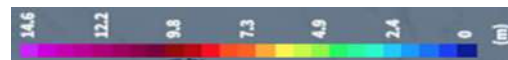
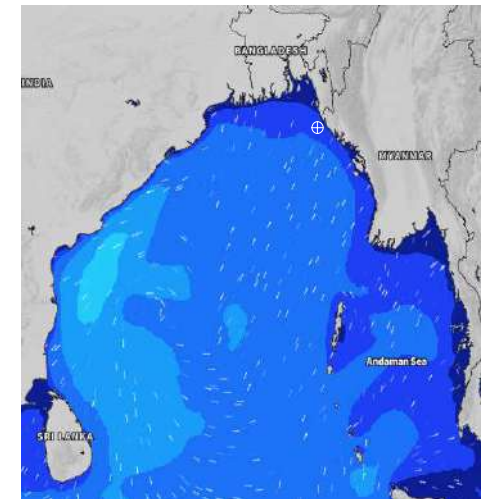
03 Dec 2024



04 Dec 2024



05 Dec 2024



Significant wave height (m)



MARINE WEATHER FORECAST (28 Nov to 05 Dec 2024)

40 NM EAST OF PAYRA FAIRWAY (21° 07' N, 090° 45' E)



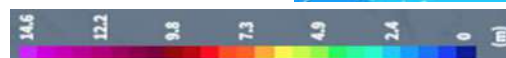
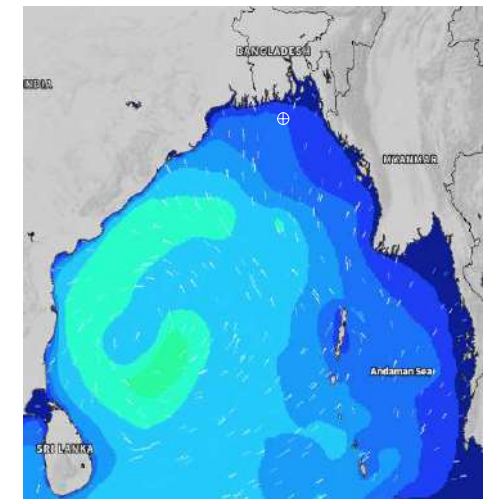
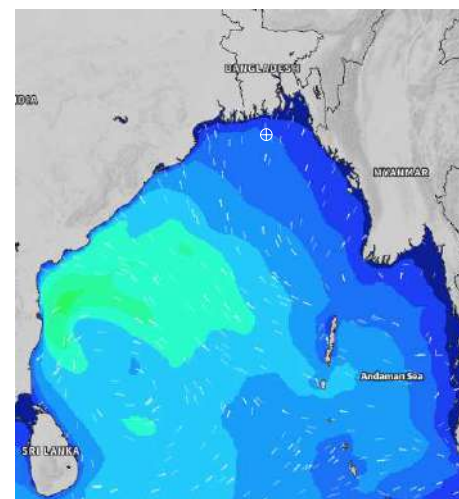
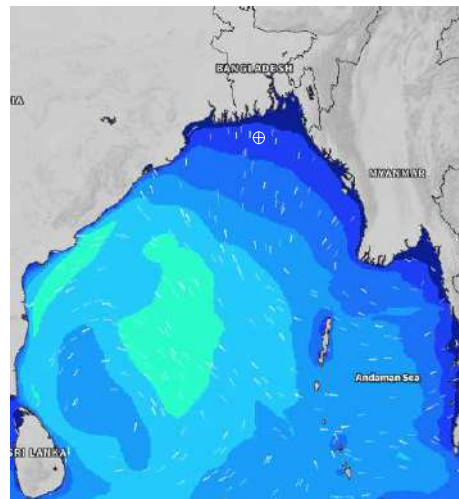
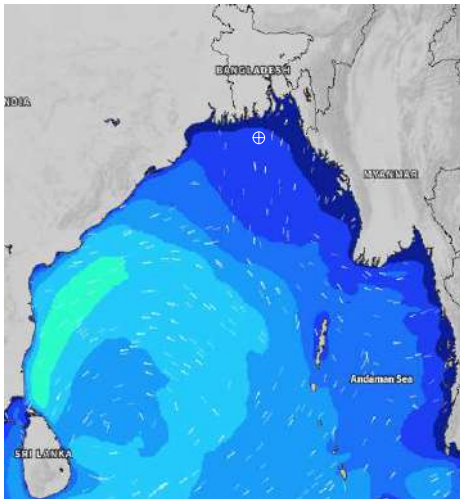
Date	Time	Air Temp (°C)		Sea Surface Temp (°C)	Baro Pressure (mbar)	Wind Direction	Wind Spd (kts)		Wave Ht (m)	Sea State	Humidity (%)	Prob of Rain
		Max	Min				Max	Avg				
28-11-24 (Thursday)	0001	27	18	24	1012	NNW	11	10	0.6	3	80	11% (0.0 mm)
	0600			24	1013	NNE	11	10	0.6	3	83	10% (0.0 mm)
	1200			24	1013	N	11	10	0.6	3	55	11% (0.0 mm)
	1800			24	1013	N	10	9	0.6	3	69	10% (0.0 mm)
29-11-24 (Friday)	0001	28	19	25	1013	NNE	4	3	0.6	3	84	11% (0.0 mm)
	0600			25	1013	NNE	4	3	0.7	3	84	10% (0.0 mm)
	1200			24	1013	NE	9	8	0.8	3	51	11% (0.0 mm)
	1800			24	1012	NE	7	6	1.0	3	67	10% (0.0 mm)
30-11-24 (Saturday)	0001	26	21	24	1012	E	3	2	1.1	3	83	11% (0.0 mm)
	0600			24	1011	ENE	11	10	1.2	3	83	15% (0.0 mm)
	1200			24	1011	E	9	8	1.2	3	52	12% (0.0 mm)
	1800			25	1010	E	6	5	1.2	3	68	10% (0.0 mm)
01-12-24 (Sunday)	0001	27	22	25	1010	SE	5	4	1.2	3	81	11% (0.0 mm)
	0600			25	1010	SE	12	11	1.2	3	84	12% (0.0 mm)
	1200			25	1011	ENE	9	8	1.2	3	54	12% (0.0 mm)
	1800			25	1009	NE	12	10	1.1	3	65	10% (0.0 mm)

28 Nov 2024

29 Nov 2024

30 Nov 2024

01 Dec 2024



Significant wave height (m)



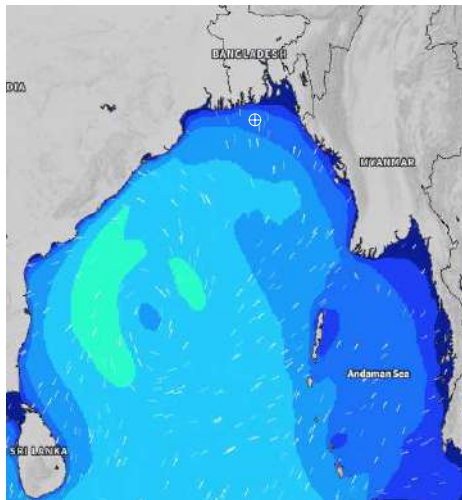
MARINE WEATHER FORECAST (28 Nov to 05 Dec 2024)

40 NM EAST OF PAYRA FAIRWAY (21° 07' N, 090° 45' E)

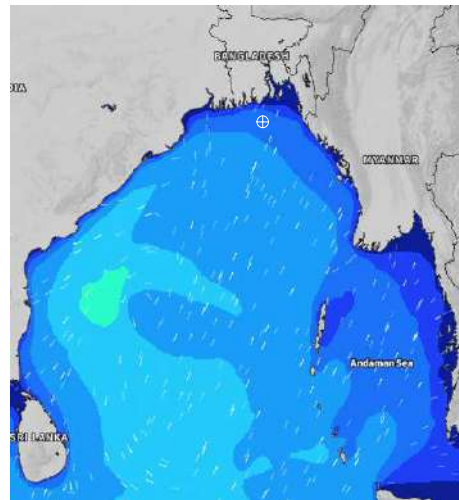


Date	Time	Air Temp (°C)		Sea Surface Temp (°C)	Baro Pressure (mbar)	Wind Direction	Wind Spd (kts)		Wave Ht (m)	Sea State	Humidity (%)	Prob of Rain
		Max	Min				Max	Avg				
02-12-24 (Monday)	0001	27	22	24	1010	NNE	5	4	1.1	3	81	12% (0.0 mm)
	0600			24	1010	ENE	7	6	1.1	3	81	10% (0.0 mm)
	1200			25	1011	ESE	6	5	1.2	3	53	11% (0.0 mm)
	1800			24	1010	E	6	5	1.2	3	68	12% (0.0 mm)
03-12-24 (Tuesday)	0001	27	22	25	1011	ESE	4	3	1.3	4	79	34% (0.2 mm)
	0600			25	1011	ESE	11	10	1.2	3	82	44% (0.4 mm)
	1200			24	1012	NE	8	7	1.2	3	66	32% (0.2 mm)
	1800			23	1011	NE	9	8	1.3	4	79	32% (0.2 mm)
04-12-24 (Wednesday)	0001	27	21	24	1011	NNE	10	9	1.3	4	88	56% (0.4 mm)
	0600			23	1011	ENE	14	13	1.3	4	89	66% (0.5 mm)
	1200			24	1011	ESE	11	10	1.3	4	70	57% (0.9 mm)
	1800			24	1010	E	11	10	1.2	3	81	51% (0.4 mm)
05-12-24 (Thursday)	0001	27	20	24	1011	ESE	13	12	1.1	3	90	57% (0.9 mm)
	0600			25	1011	ESE	17	16	1.2	3	90	51% (0.4 mm)
	1200			25	1011	NE	13	12	1.2	3	70	32% (0.2 mm)
	1800			25	1009	NE	12	11	1.0	3	79	49% (0.4 mm)

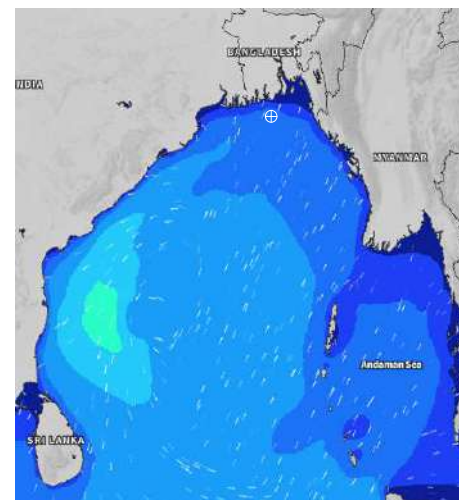
02 Dec 2024



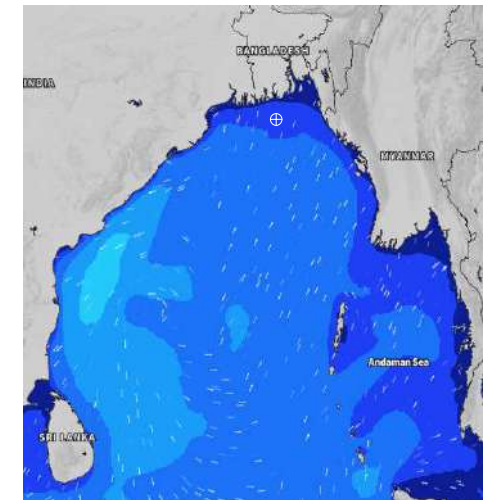
03 Dec 2024



04 Dec 2024



05 Dec 2024



Significant wave height (m)



MARINE WEATHER FORECAST (28 Nov to 05 Dec 2024)

10 NM SOUTH OF MONGLA FAIRWAY (21° 16' N, 089° 34' E)



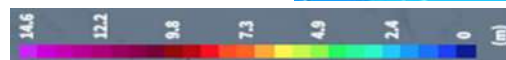
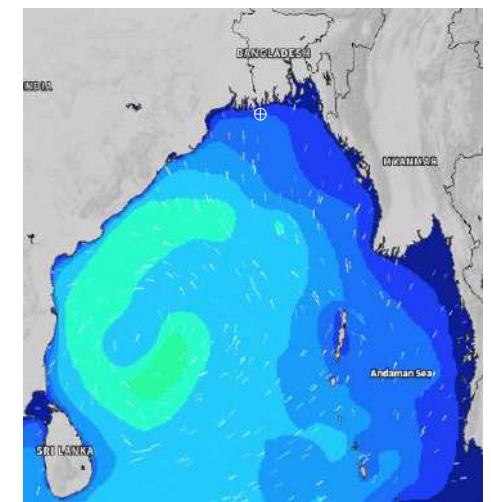
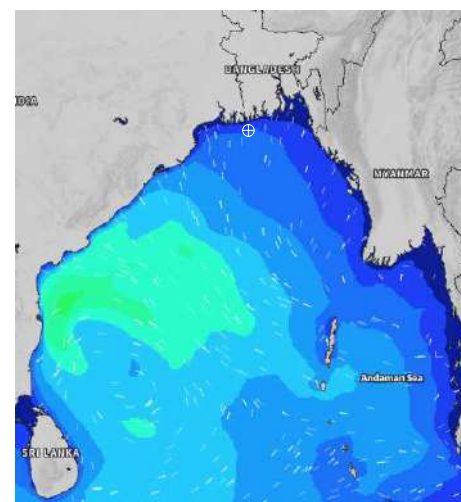
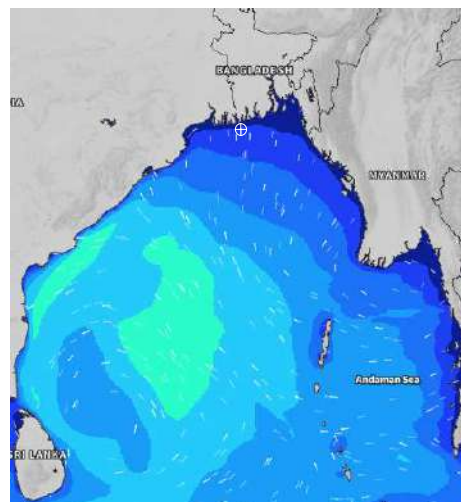
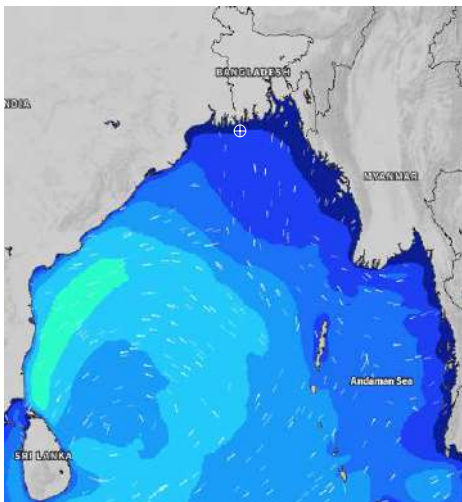
Date	Time	Air Temp (°C)		Sea Surface Temp (°C)	Baro Pressure (mbar)	Wind Direction	Wind Spd (kts)		Wave Ht (m)	Sea State	Humidity (%)	Prob of Rain
		Max	Min				Max	Avg				
28-11-24 (Thursday)	0001	28	17	25	1013	N	7	6	0.5	2	87	10% (0.0 mm)
	0600			24	1013	NNE	13	12	0.6	3	91	11% (0.0 mm)
	1200			23	1014	NNE	11	10	0.7	3	50	11% (0.0 mm)
	1800			24	1013	ENE	6	5	0.7	3	64	12% (0.0 mm)
29-11-24 (Friday)	0001	28	18	25	1013	N	4	3	0.7	3	85	11% (0.0 mm)
	0600			24	1013	NNE	7	6	0.7	3	90	12% (0.0 mm)
	1200			24	1014	NE	9	8	0.8	3	47	10% (0.0 mm)
	1800			22	1012	ENE	6	5	1.1	3	65	12% (0.0 mm)
30-11-24 (Saturday)	0001	27	20	23	1012	ENE	4	3	1.2	3	86	11% (0.0 mm)
	0600			24	1011	ENE	12	10	1.3	4	91	12% (0.0 mm)
	1200			24	1011	E	9	8	1.3	4	48	10% (0.0 mm)
	1800			24	1010	E	4	3	1.3	4	65	12% (0.0 mm)
01-12-24 (Sunday)	0001	27	21	25	1010	ENE	5	4	1.3	4	84	11% (0.0 mm)
	0600			24	1010	ENE	12	10	1.3	4	90	12% (0.0 mm)
	1200			24	1011	ENE	9	8	1.3	4	49	10% (0.0 mm)
	1800			24	1009	E	12	11	1.3	4	65	10% (0.0 mm)

28 Nov 2024

29 Nov 2024

30 Nov 2024

01 Dec 2024



Significant wave height (m)



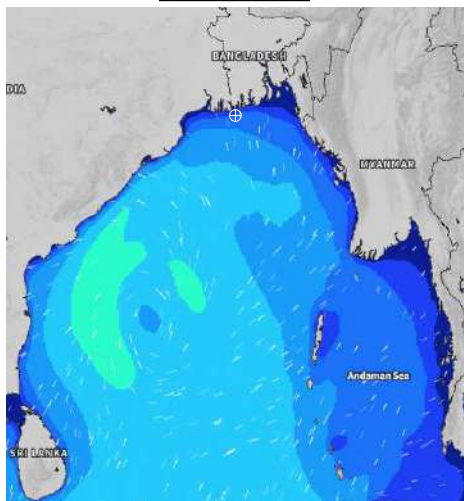
MARINE WEATHER FORECAST (28 Nov to 05 Dec 2024)

10 NM SOUTH OF MONGLA FAIRWAY (21° 16' N, 089° 34' E)

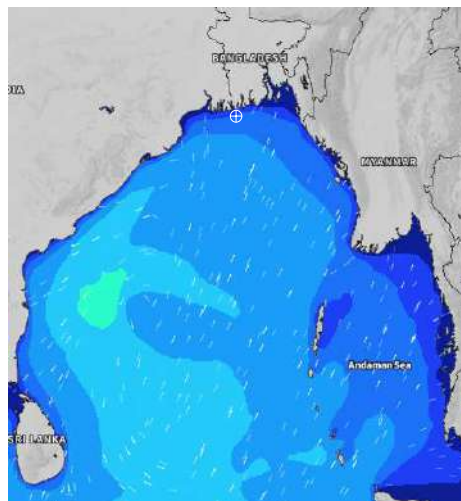


Date	Time	Air Temp (°C)		Sea Surface Temp (°C)	Baro Pressure (mbar)	Wind Direction	Wind Spd (kts)		Wave Ht (m)	Sea State	Humidity (%)	Prob of Rain
		Max	Min				Max	Avg				
02-12-24 (Monday)	0001	27	21	24	1010	ENE	7	6	1.2	3	83	11% (0.0 mm)
	0600			24	1010	ENE	8	7	1.2	3	89	11% (0.0 mm)
	1200			24	1012	ENE	9	8	1.4	4	51	12% (0.0 mm)
	1800			24	1010	ENE	6	5	1.3	4	65	10% (0.0 mm)
03-12-24 (Tuesday)	0001	27	20	25	1011	ENE	4	3	1.3	4	82	24% (0.0 mm)
	0600			24	1011	ENE	11	10	1.2	3	87	30% (0.2 mm)
	1200			24	1012	ENE	10	9	1.2	3	51	32% (0.2 mm)
	1800			23	1011	E	3	2	1.2	3	76	24% (0.0 mm)
04-12-24 (Wednesday)	0001	27	19	24	1012	ENE	10	9	1.2	3	89	32% (0.2 mm)
	0600			23	1011	ENE	15	14	1.2	3	92	34% (0.2 mm)
	1200			23	1012	ENE	11	10	1.2	3	65	31% (0.1 mm)
	1800			24	1010	ENE	4	3	1.1	3	67	24% (0.0 mm)
05-12-24 (Thursday)	0001	28	19	24	1011	ENE	7	6	1.0	3	91	12% (0.0 mm)
	0600			25	1011	ENE	13	12	1.0	3	92	11% (0.0 mm)
	1200			25	1011	ENE	12	11	0.9	3	67	12% (0.0 mm)
	1800			25	1010	ENE	5	4	0.9	3	76	10% (0.0 mm)

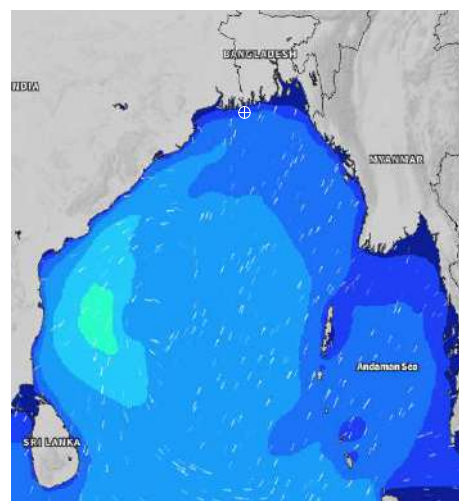
02 Dec 2024



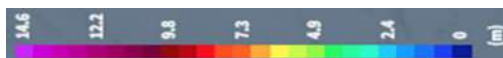
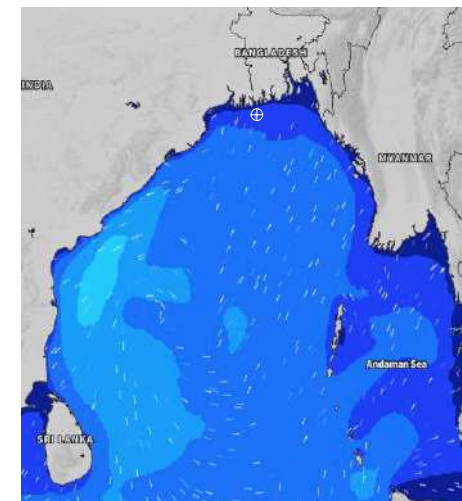
03 Dec 2024



04 Dec 2024



05 Dec 2024



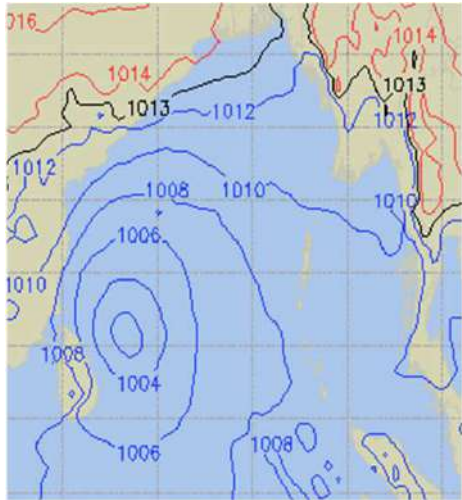
Significant wave height (m)



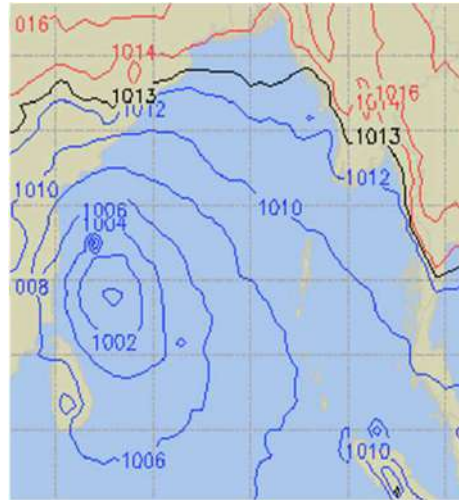
PREDICTED SURFACE PRESSURE FORECAST (28 Nov to 04 Dec 2024)



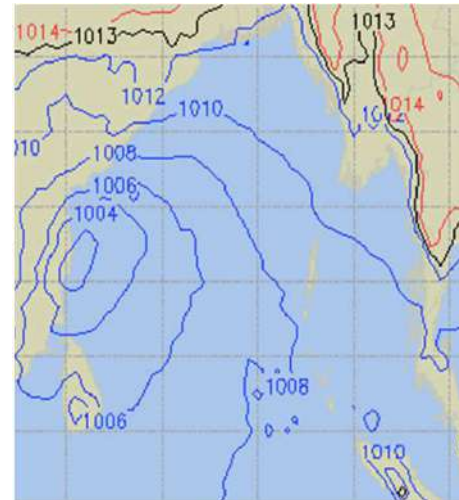
28 NOV 2024



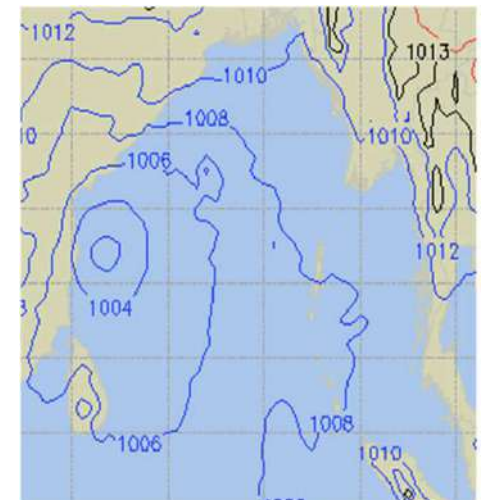
29 NOV 2024



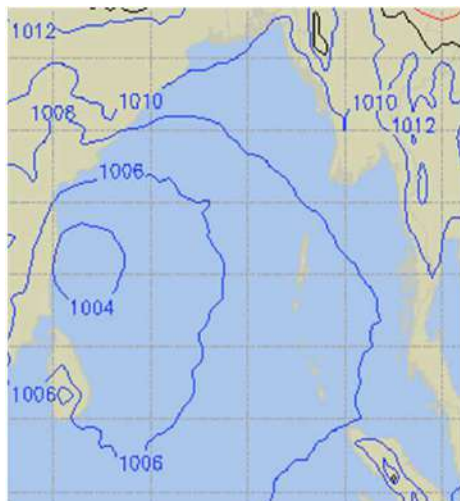
30 NOV 2024



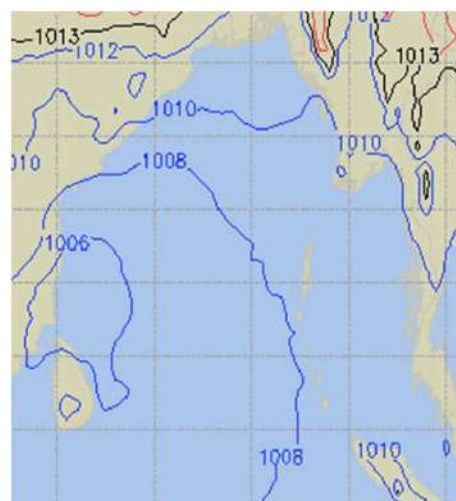
01 DEC 2024



02 DEC 2024



03 DEC 2024



04 DEC 2024

