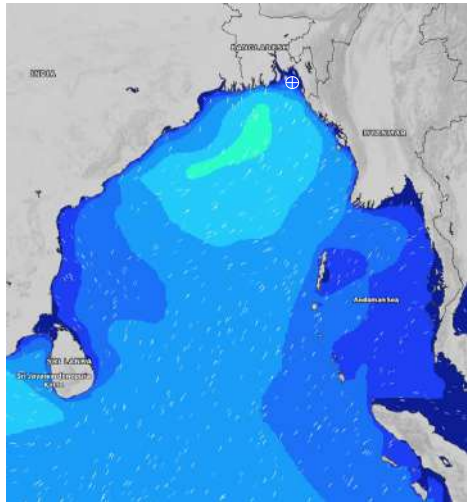


MARINE WEATHER FORECAST- NEAR AUTHORITY BUOY (Lat 22° 12' N, Long 091° 38' E)

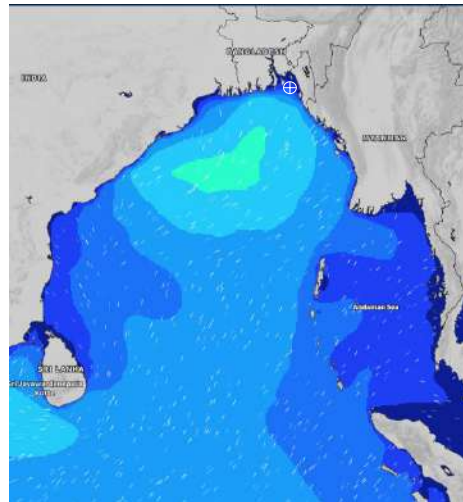
DATE : 28 June to 05 July 2024

Date	Time	Max Wind Spd (kts)	Wind Direction	Wave Ht (m)	Sea State	Baro Pressure	Air Temp		Sea Surface Temp	Humidity (%)	Prb of Rain (%)	Sea State	Wave Ht (m)
							Max	Min					
28-06-24	0001	28	SE	0.4	2	1005	30	27	28	88%	24% (0.0 mm)	0	0
	0600	26	SE	0.5	2	1004			28	87%	15% (0.2 mm)	1	0 - 0.1
	1200	25	SSE	0.5	2	1004			29	84%	72% (0.4 mm)	2	0.1 - 0.5
	1800	24	SSE	0.5	2	1002			29	88%	53% (0.2 mm)	3	0.5 - 1.25
29-06-24	0001	27	SSE	0.5	2	1002	30	26	28	90%	57% (0.5 mm)	4	1.25 - 2.5
	0600	28	SSE	0.5	2	1002			28	92%	61% (0.5 mm)	5	2.5 - 4.0
	1200	26	S	0.5	2	1003			29	87%	75% (1.0 mm)	6	4.0 - 6.0
	1800	24	S	0.5	2	1002			28	90%	88% (1.9 mm)	7	6.0 - 9.0
30-06-24	0001	25	SSE	0.5	2	1004	28	26	28	93%	83% (1.3 mm)	8	9.0 - 14.0
	0600	23	S	0.5	2	1003			28	95%	97% (2.4 mm)	9	Over 14.0
	1200	25	S	0.5	2	1004			28	93%	95% (2.5 mm)		
	1800	23	S	0.5	2	1003			28	93%	90% (3.1 mm)		
01-07-24	0001	18	SSW	0.4	2	1003	28	26	27	94%	83% (2.3 mm)		
	0600	24	WSW	0.5	2	1001			27	94%	97% (3.4 mm)		
	1200	9	SW	0.2	2	1002			26	95%	95% (2.5 mm)		
	1800	6	S	0.1	1	1001			26	95%	90% (2.1 mm)		

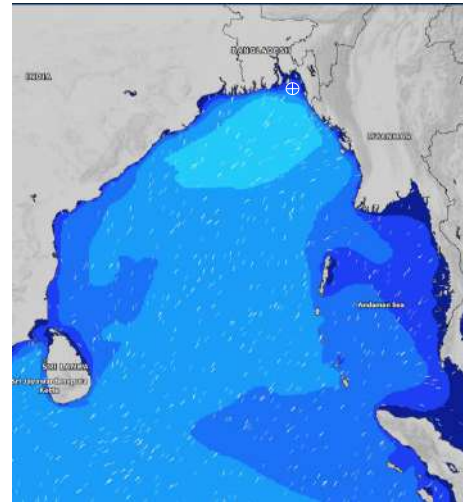
28 June 24 Fri (Probability 98%)



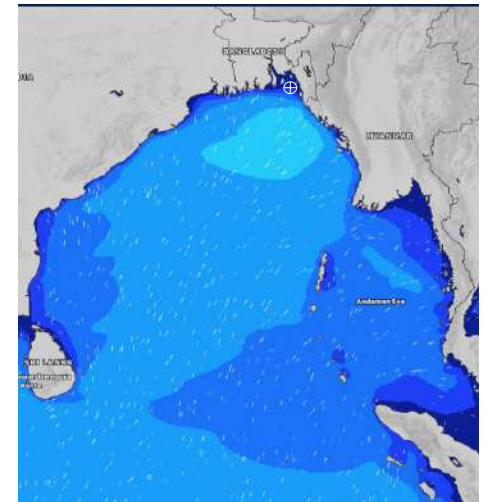
29 June 24 Sat (Probability 95%)



30 June 24 Sun (Probability 90%)



01 July 24 Mon (Probability 80%)



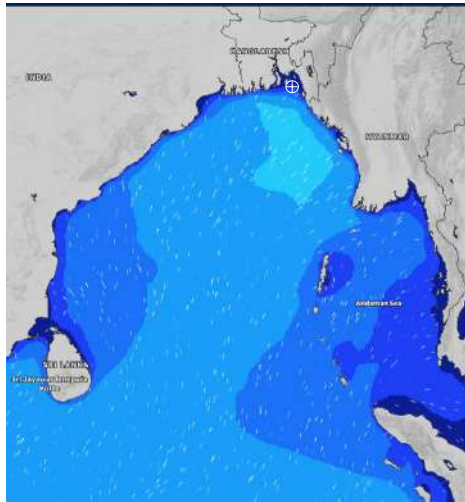
Significant wave height (m)

MARINE WEATHER FORECAST- NEAR AUTHORITY BUOY (Lat 22° 12'N, Long 091° 38'E)

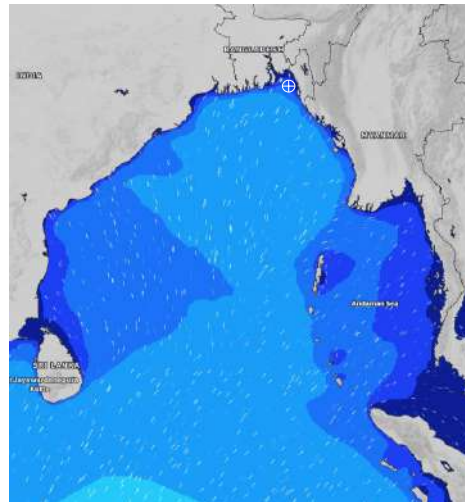
DATE : 28 June to 05 July 2024

Date	Time	Max Wind Spd (kts)	Wind Direction	Wave Ht (m)	Sea State	Baro Pressure	Air Temp		Sea Surface Temp	Humidity (%)	Prob of Rain (%)	Sea State	Wave Ht (m)
							Max	Min					
02-07-24	0001	8	SSE	0.1	1	1002	28	26	27	93%	98% (2.4 mm)	0	0
	0600	11	SW	0.2	2	1001			26	95%	96% (3.5 mm)	1	0 - 0.1
	1200	16	SSW	0.3	2	1000			27	93%	90% (3.1 mm)	2	0.1 - 0.5
	1800	20	SSE	0.3	2	998			27	93%	89% (2.3 mm)	3	0.5 - 1.25
03-07-24	0001	22	SSE	0.5	2	998	28	26	26	94%	92% (2.4 mm)	4	1.25 - 2.5
	0600	29	SE	0.6	3	1000			26	94%	98% (2.5 mm)	5	2.5 - 4.0
	1200	27	SSE	0.5	2	1002			29	95%	90% (2.1 mm)	6	4.0 - 6.0
	1800	29	SSE	0.6	3	1002			28	95%	97% (2.4 mm)	7	6.0 - 9.0
04-07-24	0001	28	SSE	0.5	2	1005	28	26	27	93%	95% (3.5 mm)	8	9.0 - 14.0
	0600	23	SE	0.4	2	1005			27	95%	90% (2.1 mm)	9	Over 14.0
	1200	22	S	0.5	2	1005			28	93%	83% (1.3 mm)		
	1800	22	S	0.5	2	1005			28	93%	97% (1.4 mm)		
05-07-24	0001	22	SSE	0.4	2	1006	29	26	27	94%	61% (0.6 mm)		
	0600	20	SE	0.4	2	1004			27	94%	53% (0.4 mm)		
	1200	18	S	0.4	2	1004			28	95%	36% (0.2 mm)		
	1800	17	S	0.4	2	1002			28	95%	24% (0.1 mm)		

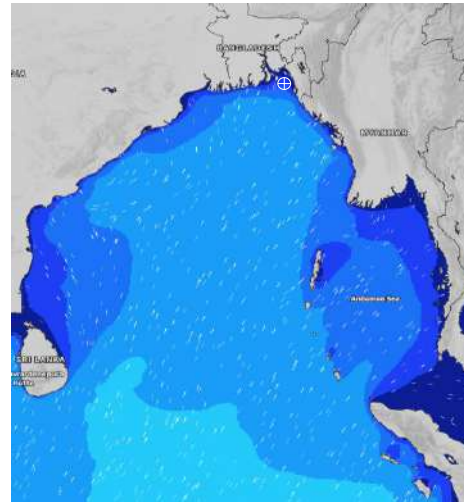
02 July 24 Tue (Probability 70%)



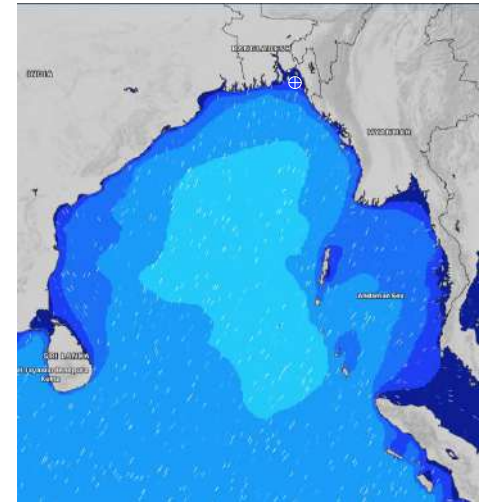
03 July 24 Wed (Probability 60%)



04 July 24 Thu (Probability 50%)



05 July 24 Fri (Probability 50%)



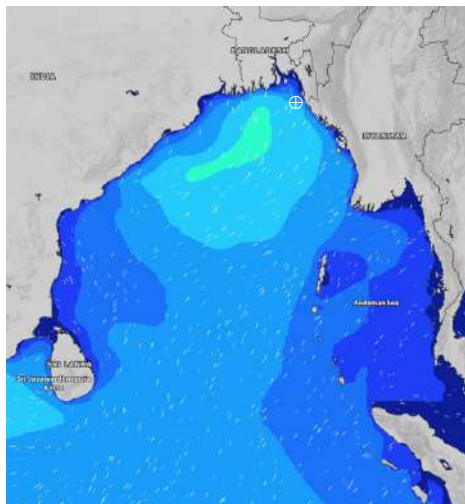
Significant wave height (m)

MARINE WEATHER FORECAST- 20 NM WEST OF ELEPHANT POINT (Lat 21° 10' N, Long 091° 42' E)

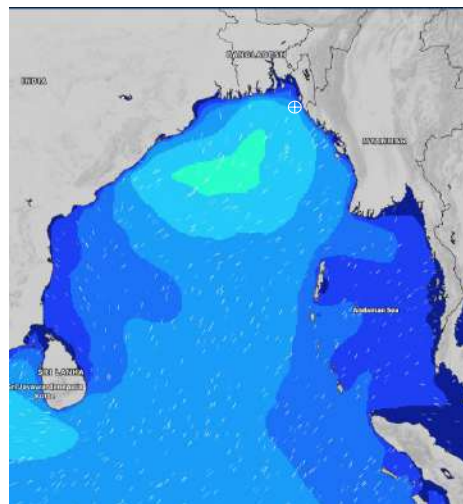
DATE : 28 June to 05 July 2024

Date	Time	Max Wind Spd (kts)	Wind Direction	Wave Ht (m)	Sea State	Baro Pressure	Air Temp		Sea Surface Temp	Humidity (%)	Prob of Rain (%)	Sea State	Wave Ht (m)		
							Max	Min							
28-06-24	0001	28	SSE	2.3	4	1005	29	27	28	89%	69% (0.6 mm)	0	0		
	0600	25	SSE	2.3	4	1004			29	27	29	91%	91% (1.1 mm)	1	0 - 0.1
	1200	25	SSE	2.3	4	1004			29	27	29	88%	90% (0.9 mm)	2	0.1 - 0.5
	1800	23	S	2.1	4	1002			29	27	29	91%	71% (0.7 mm)	3	0.5 - 1.25
29-06-24	0001	24	SSE	2.1	4	1003	29	27	29	91%	83% (1.3 mm)	4	1.25 - 2.5		
	0600	22	SSE	2.0	4	1002			29	27	29	93%	97% (1.4 mm)	5	2.5 - 4.0
	1200	25	S	2.3	4	1003			29	27	29	90%	95% (1.5 mm)	6	4.0 - 6.0
	1800	22	S	2.2	4	1003			29	27	29	92%	90% (1.1 mm)	7	6.0 - 9.0
30-06-24	0001	25	S	2.1	4	1004	28	27	29	90%	61% (0.6 mm)	8	9.0 - 14.0		
	0600	26	SSW	2.2	4	1004			29	27	29	93%	67% (0.6 mm)	9	Over 14.0
	1200	24	S	2.2	4	1005			29	27	29	83%	67% (0.6 mm)		
	1800	24	SSW	2.2	4	1003			29	27	29	88%	59% (0.4 mm)		
01-07-24	0001	23	SW	2.1	4	1004	28	26	29	93%	61% (0.6 mm)				
	0600	25	SW	2.1	4	1002			29	26	29	95%	67% (0.6 mm)		
	1200	15	WSW	2.0	4	1003			29	26	29	93%	67% (0.6 mm)		
	1800	22	W	1.9	4	1001			29	26	29	93%	59% (0.4 mm)		

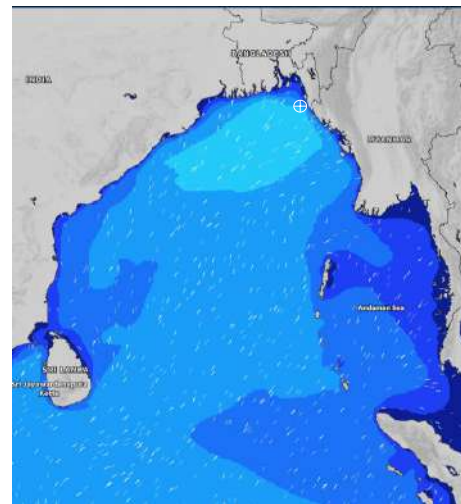
28 June 24 Fri (Probability 98%)



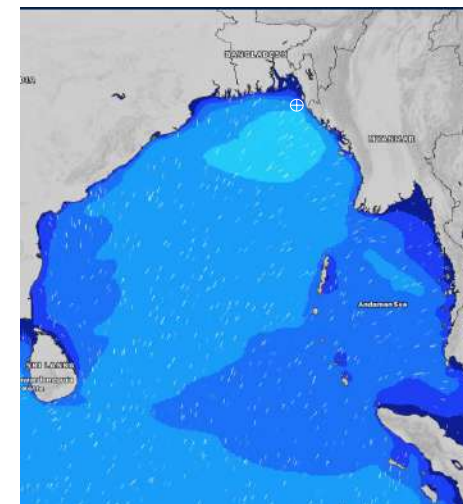
29 June 24 Sat (Probability 95%)



30 June 24 Sun (Probability 90%)



01 July 24 Mon (Probability 80%)



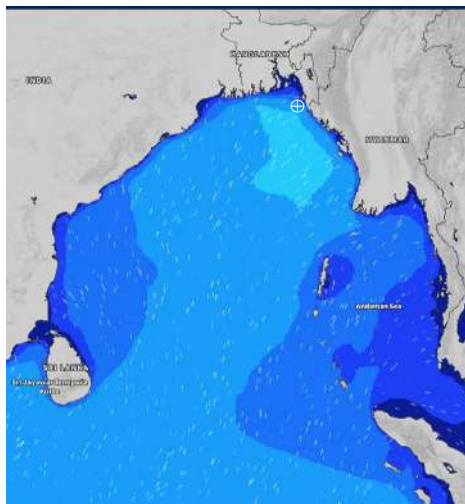
Significant wave height (m)

MARINE WEATHER FORECAST- 20 NM WEST OF ELEPHANT POINT (Lat 21° 10' N, Long 091° 42' E)

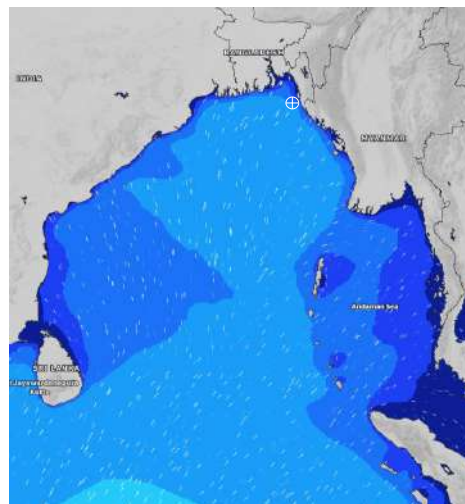
DATE : 28 June to 05 July 2024

Date	Time	Max Wind Spd (kts)	Wind Direction	Wave Ht (m)	Sea State	Baro Pressure	Air Temp		Sea Surface Temp	Humidity (%)	Prob of Rain (%)	Sea State	Wave Ht (m)
							Max	Min					
02-07-24	0001	15	WSW	1.7	4	1003	28	26	28	93%	98% (2.4 mm)	0	0
	0600	17	SW	1.7	4	1001			27	95%	96% (3.5 mm)	1	0 - 0.1
	1200	20	WSW	1.9	4	1001			27	93%	90% (3.1 mm)	2	0.1 - 0.5
	1800	20	SW	2.0	4	1000			27	93%	89% (2.3 mm)	3	0.5 - 1.25
03-07-24	0001	20	SW	1.9	4	1001	28	26	27	94%	92% (2.4 mm)	4	1.25 - 2.5
	0600	21	SSW	1.9	4	1002			28	94%	98% (2.5 mm)	5	2.5 - 4.0
	1200	20	SSE	1.8	4	1003			28	95%	90% (2.1 mm)	6	4.0 - 6.0
	1800	23	SSE	1.9	4	1003			28	95%	97% (2.4 mm)	7	6.0 - 9.0
04-07-24	0001	22	SSE	1.9	4	1005	29	26	28	93%	95% (3.5 mm)	8	9.0 - 14.0
	0600	19	SSE	1.7	4	1005			28	95%	90% (2.1 mm)	9	Over 14.0
	1200	20	SSE	1.7	4	1006			28	93%	83% (1.3 mm)		
	1800	17	S	1.6	4	1005			29	93%	97% (1.4 mm)		
05-07-24	0001	20	SSE	1.7	4	1006	29	26	28	90%	61% (0.6 mm)		
	0600	17	SSE	1.6	4	1005			28	93%	53% (0.5 mm)		
	1200	15	SSE	1.6	4	1004			28	84%	56% (0.4 mm)		
	1800	21	S	1.5	4	1003			29	89%	36% (0.3 mm)		

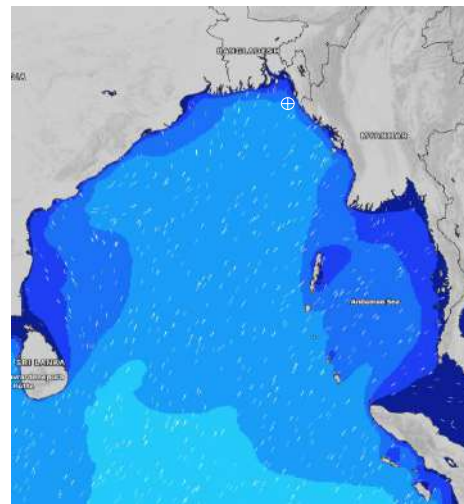
02 July 24 Tue (Probability 70%)



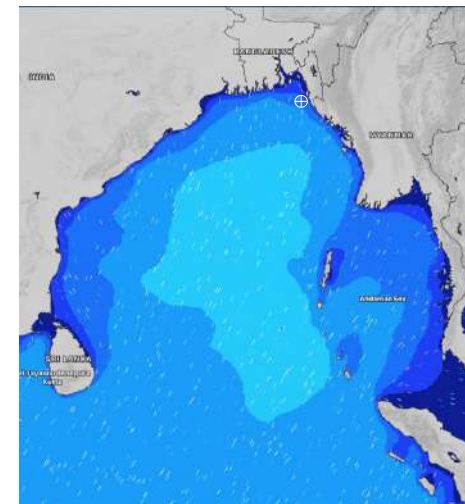
03 July 24 Wed (Probability 60%)



04 July 24 Thu (Probability 50%)



05 July 24 Fri (Probability 50%)



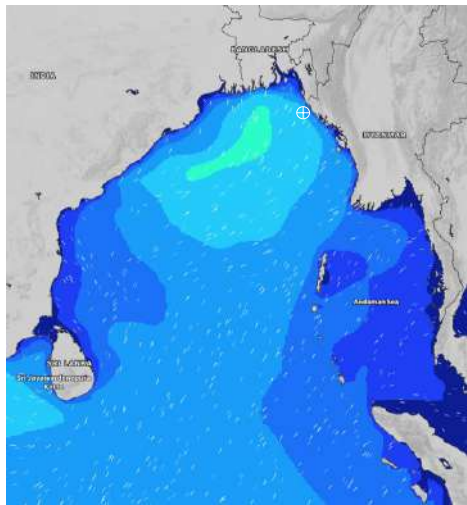
Significant wave height (m)

MARINE WEATHER FORECAST- 15 NM WEST OF ST. MARTIN'S LIGHT HOUSE (Lat 20° 37'N, Long 092° 03'E)

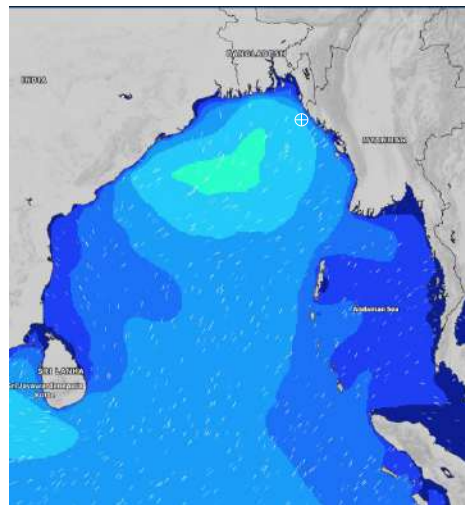
DATE : 28 June to 05 July 2024

Date	Time	Max Wind Spd (kts)	Wind Direction	Wave Ht (m)	Sea State	Baro Pressure	Air Temp		Sea Surface Temp	Humidity (%)	Prob of Rain(%)	Sea State	Wave Ht (m)
							Max	Min					
28-06-24	0001	26	SSE	2.5	4	1005	29	27	29	92%	83% (1.3 mm)	0	0
	0600	24	S	2.7	5	1004			29	92%	94% (2.4 mm)	1	0 - 0.1
	1200	21	S	2.6	5	1005			29	90%	98% (1.8 mm)	2	0.1 - 0.5
	1800	23	S	2.5	4	1002			29	92%	88% (0.9 mm)	3	0.5 - 1.25
29-06-24	0001	20	S	2.4	4	1004	29	27	29	92%	96% (3.5 mm)	4	1.25 - 2.5
	0600	22	S	2.5	4	1002			29	91%	90% (3.1 mm)	5	2.5 - 4.0
	1200	24	S	2.7	5	1004			29	93%	89% (2.3 mm)	6	4.0 - 6.0
	1800	23	SSW	2.6	5	1003			29	92%	92% (2.4 mm)	7	6.0 - 9.0
30-06-24	0001	24	SSW	2.6	5	1005	28	27	29	93%	98% (2.5 mm)	8	9.0 - 14.0
	0600	25	SSW	2.7	5	1004			29	95%	90% (2.1 mm)	9	Over 14.0
	1200	24	S	2.6	5	1006			29	93%	97% (2.4 mm)		
	1800	24	SSW	2.6	5	1004			29	93%	95% (3.5 mm)		
01-07-24	0001	23	SW	2.5	4	1006	28	26	29	94%	90% (2.1 mm)		
	0600	26	SW	2.5	4	1002			29	94%	83% (1.3 mm)		
	1200	25	SW	2.6	5	1004			29	95%	97% (1.4 mm)		
	1800	23	WSW	2.5	4	1002			28	95%	61% (0.6 mm)		

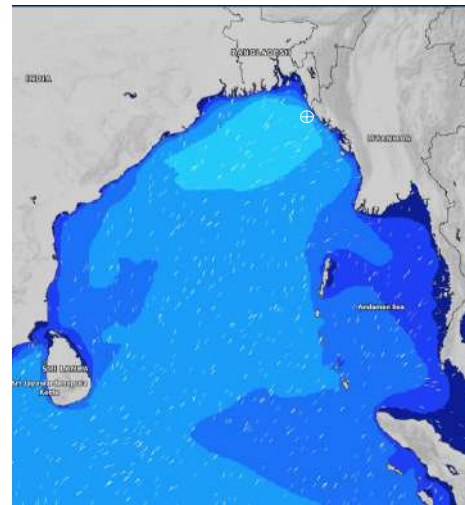
28 June 24 Fri (Probability 98%)



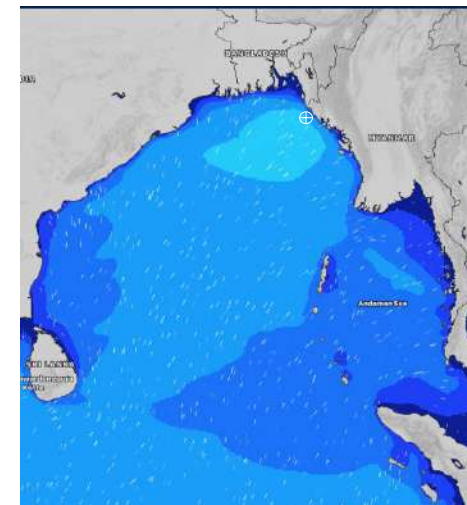
29 June 24 Sat (Probability 95%)



30 June 24 Sun (Probability 90%)



01 July 24 Mon (Probability 80%)



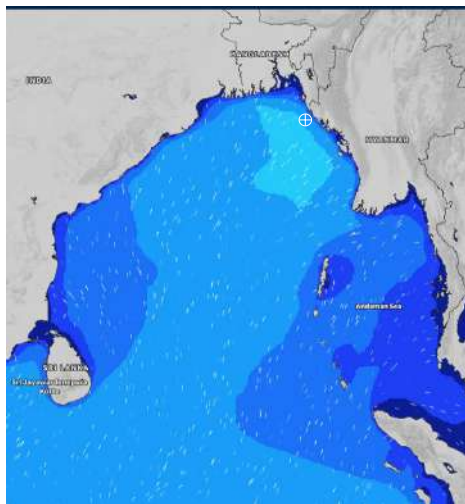
Significant wave height (m)

MARINE WEATHER FORECAST- 15 NM WEST OF ST. MARTIN'S LIGHT HOUSE (Lat 20° 37' N, Long 092° 03' E)

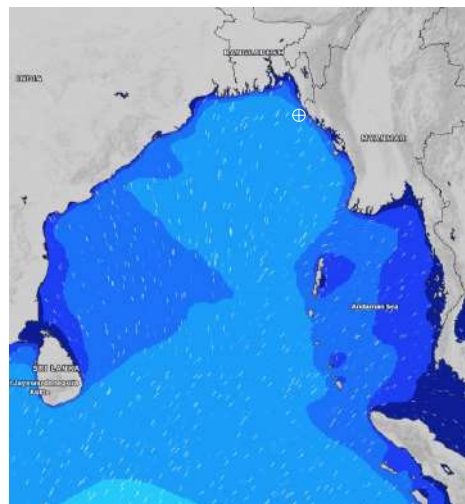
DATE : 28 June to 05 July 2024

Date	Time	Max Wind Spd (kts)	Wind Direction	Wave Ht (m)	Sea State	Baro Pressure	Air Temp		Sea Surface Temp	Humidity (%)	Prob of Rain (%)	Sea State	Wave Ht (m)
							Max	Min					
02-07-24	0001	18	WSW	2.3	4	1004	28	26	28	93%	92% (2.4 mm)	0	0
	0600	20	WSW	2.1	4	1001			28	95%	98% (2.5 mm)	1	0 - 0.1
	1200	20	WSW	2.3	4	1002			28	93%	90% (2.1 mm)	2	0.1 - 0.5
	1800	18	SSW	2.3	4	1001			29	93%	97% (2.4 mm)	3	0.5 - 1.25
03-07-24	0001	18	S	2.2	4	1003	28	26	28	92%	95% (3.5 mm)	4	1.25 - 2.5
	0600	16	S	2.0	4	1001			28	94%	90% (2.1 mm)	5	2.5 - 4.0
	1200	14	SSE	1.9	4	1004			28	92%	83% (1.3 mm)	6	4.0 - 6.0
	1800	16	SSE	1.9	4	1003			28	93%	97% (1.4 mm)	7	6.0 - 9.0
04-07-24	0001	19	SSE	2.1	4	1006	28	26	28	93%	61% (0.6 mm)	8	9.0 - 14.0
	0600	17	SSE	2.0	4	1004			27	94%	71% (0.7 mm)	9	Over 14.0
	1200	19	SSE	1.9	4	1007			27	95%	45% (0.4 mm)		
	1800	15	S	1.9	4	1005			27	93%	92% (2.4 mm)		
05-07-24	0001	17	SSE	2.0	4	1007	28	26	27	94%	69% (0.8 mm)		
	0600	19	SSE	1.9	4	1005			27	94%	71% (0.7 mm)		
	1200	15	S	1.9	4	1006			27	95%	45% (0.4 mm)		
	1800	17	SSE	2.0	4	1003			27	95%	32% (0.2 mm)		

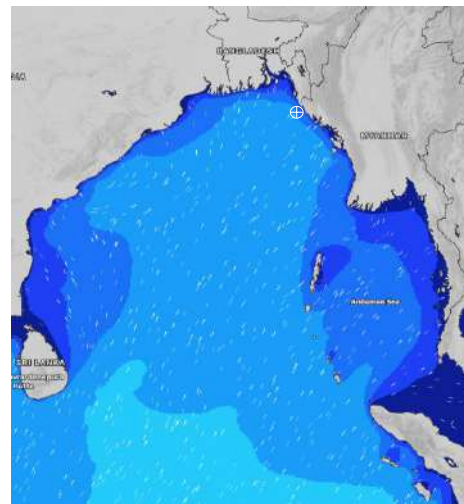
02 July 24 Tue (Probability 70%)



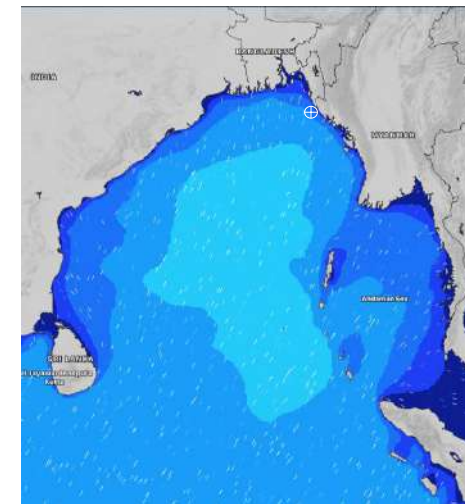
03 July 24 Wed (Probability 60%)



04 July 24 Thu (Probability 50%)



05 July 24 Fri (Probability 50%)



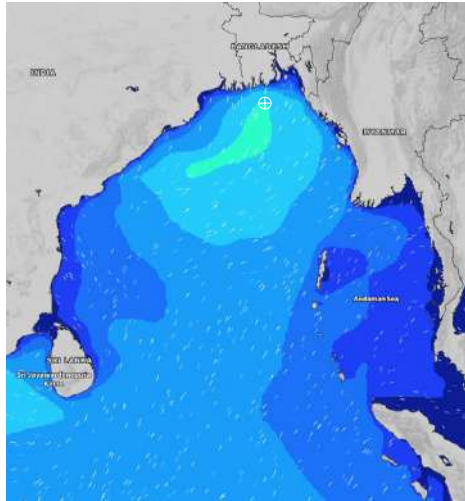
Significant wave height (m)

MARINE WEATHER FORECAST- 40 NM ESE OF PAYRA FAIRWAY (Lat 21° 07' N, Long 090° 45' E)

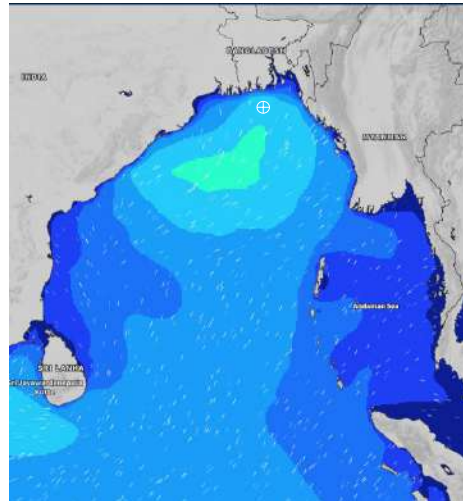
DATE : 28 June to 05 July 2024

Date	Time	Max Wind Spd (kts)	Wind Direction	Wave Ht (m)	Sea State	Baro Pressure	Air Temp		Sea Surface Temp	Humidity (%)	Prob of Rain (%)	Sea State	Wave Ht (m)
							Max	Min					
28-06-24	0001	27	SSE	2.8	5	1003	30	28	29	88%	50% (0.4 mm)	0	0
	0600	27	S	3.0	5	1003			29	87%	31% (0.2 mm)	1	0 - 0.1
	1200	27	S	2.9	5	1003			29	88%	98% (2.6 mm)	2	0.1 - 0.5
	1800	24	S	2.9	5	1000			29	89%	41% (0.4 mm)	3	0.5 - 1.25
29-06-24	0001	22	SSW	2.7	5	1002	30	27	29	87%	61% (0.4 mm)	4	1.25 - 2.5
	0600	21	SSW	2.6	5	1001			29	91%	62% (0.5 mm)	5	2.5 - 4.0
	1200	23	SSW	2.7	5	1000			29	89%	65% (2.0 mm)	6	4.0 - 6.0
	1800	23	SSW	2.7	5	1003			29	89%	48% (0.4 mm)	7	6.0 - 9.0
30-06-24	0001	25	SSW	2.8	5	1003	29	27	29	89%	83% (1.3 mm)	8	9.0 - 14.0
	0600	27	SSW	2.9	5	1003			29	92%	97% (1.4 mm)	9	Over 14.0
	1200	26	SSW	2.8	5	1004			29	90%	61% (0.6 mm)		
	1800	24	SW	2.8	5	1002			29	92%	53% (0.4 mm)		
01-07-24	0001	24	SW	2.6	5	1004	28	27	29	88%	83% (1.3 mm)		
	0600	25	WSW	2.7	5	1002			29	92%	97% (1.4 mm)		
	1200	19	WSW	2.4	4	1002			29	91%	61% (0.6 mm)		
	1800	20	WSW	2.4	4	1001			29	90%	53% (0.4 mm)		

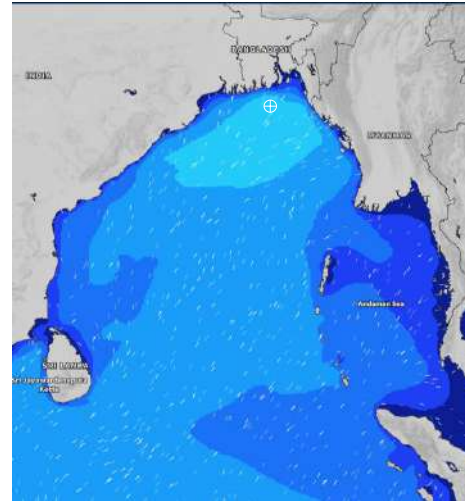
28 June 24 Fri (Probability 98%)



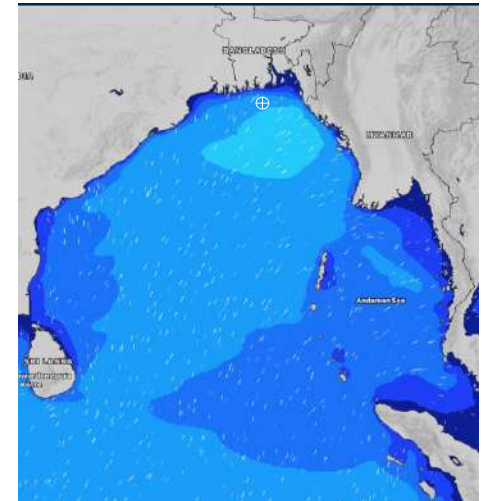
29 June 24 Sat (Probability 95%)



30 June 24 Sun (Probability 90%)



01 July 24 Mon (Probability 80%)



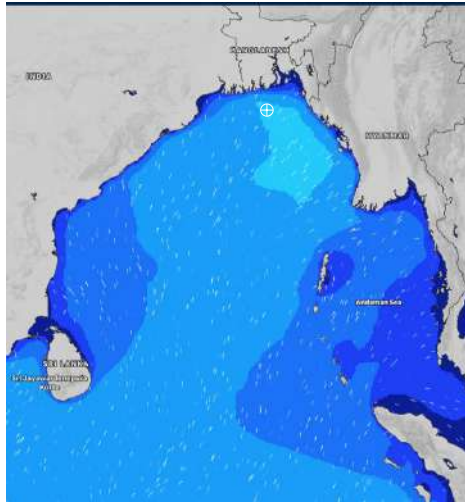
Significant wave height (m)

MARINE WEATHER FORECAST- 40 NM ESE OF PAYRA FAIRWAY (Lat 21° 07' N, Long 090° 45' E)

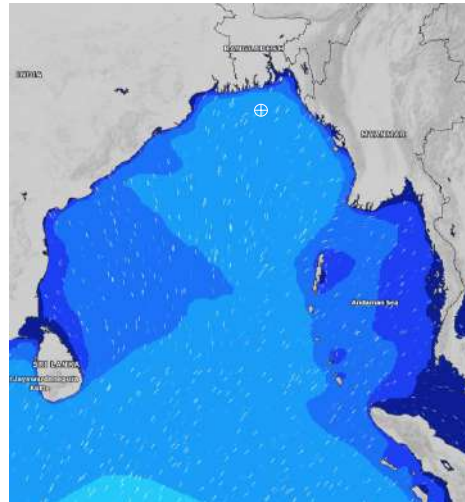
DATE : 28 June to 05 July 2024

Date	Time	Max Wind Spd (kts)	Wind Direction	Wave Ht (m)	Sea Stae	Baro Pressure	Air Temp		Sea Surface Temp	Humidity (%)	Prob of Rain (%)	Sea State	Wave Ht (m)
							Max	Min					
02-07-24	0001	18	WSW	2.1	4	1002	28	27	29	88%	82% (2.1 mm)	0	0
	0600	22	WSW	2.2	4	1001			27	92%	81% (2.4 mm)	1	0 - 0.1
	1200	24	SW	2.5	4	1001			29	91%	86% (3.5 mm)	2	0.1 - 0.5
	1800	24	SW	2.7	5	999			29	90%	91% (2.1 mm)	3	0.5 - 1.25
03-07-24	0001	23	SW	2.4	4	1001	29	27	28	89%	83% (1.3 mm)	4	1.25 - 2.5
	0600	25	SSW	2.3	4	1001			29	90%	97% (1.4 mm)	5	2.5 - 4.0
	1200	23	SSW	2.3	4	1002			29	90%	61% (0.6 mm)	6	4.0 - 6.0
	1800	20	S	2.3	4	1002			29	89%	90% (2.1 mm)	7	6.0 - 9.0
04-07-24	0001	19	S	2.2	4	1004	29	27	29	88%	97% (2.4 mm)	8	9.0 - 14.0
	0600	19	S	2.0	4	1004			29	92%	95% (3.5 mm)	9	Over 14.0
	1200	19	SSE	2.0	4	1005			28	91%	43% (0.4 mm)		
	1800	19	S	2.1	4	1004			29	90%	24% (0.1 mm)		
05-07-24	0001	19	S	2.1	4	1006	29	27	29	88%	61% (0.6 mm)		
	0600	17	S	2.0	4	1004			29	92%	44% (0.4 mm)		
	1200	14	SSE	2.0	4	1004			28	91%	43% (0.4 mm)		
	1800	12	S	2.0	4	1002			29	90%	24% (0.1 mm)		

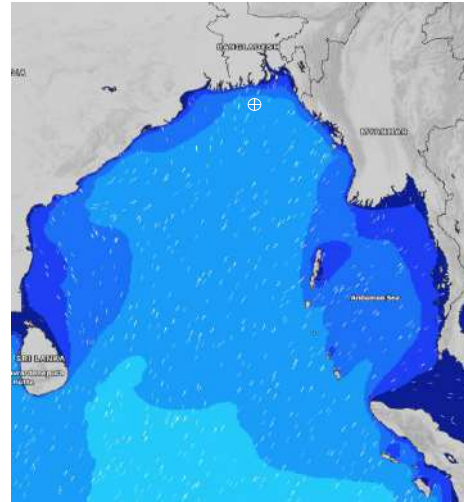
02 July 24 Tue (Probability 70%)



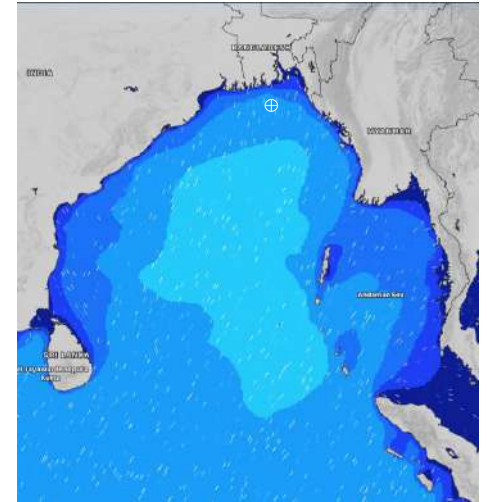
03 July 24 Wed (Probability 60%)



04 July 24 Thu (Probability 50%)



05 July 24 Fri (Probability 50%)



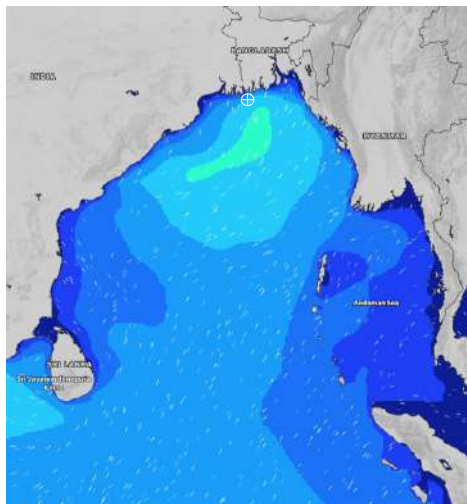
Significant wave height (m)

MARINE WEATHER FORECAST- 10 NM SOUTH OF MONGLA FAIRWAY (Lat 21° 16' N, Long 089° 34' E)

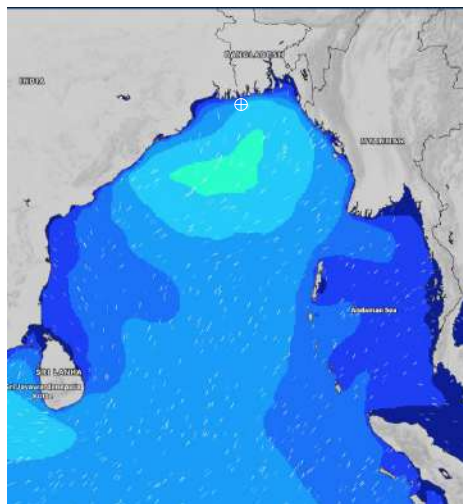
DATE : 28 June to 05 July 2024

Date	Time	Max Wind Spd (kts)	Wind Direction	Wave Ht (m)	Sea State	Baro Pressure	Air Temp		Sea Surface Temp	Humidity (%)	Prob of Rain (%)	Sea State	Wave Ht (m)
							Max	Min					
28-06-24	0001	21	SSE	2.5	4	1002	31	27	29	90%	24% (0.0 mm)	0	0
	0600	25	S	2.6	5	1001			29	89%	23% (0.0 mm)	1	0 - 0.1
	1200	23	SSW	2.9	5	1001			29	84%	45% (0.4 mm)	2	0.1 - 0.5
	1800	17	S	2.7	5	999			30	87%	32% (0.2 mm)	3	0.5 - 1.25
29-06-24	0001	19	SSW	2.4	4	1000	31	27	29	90%	53% (0.4 mm)	4	1.25 - 2.5
	0600	20	SSW	2.6	5	1000			30	93%	58% (0.4 mm)	5	2.5 - 4.0
	1200	21	SSW	2.6	5	1001			29	87%	89% (1.2 mm)	6	4.0 - 6.0
	1800	19	SSW	2.4	4	1000			30	90%	24% (0.1 mm)	7	6.0 - 9.0
30-06-24	0001	24	SSW	2.7	5	1002	29	27	30	92%	83% (1.3 mm)	8	9.0 - 14.0
	0600	24	SSW	2.7	5	1001			29	95%	94% (2.4 mm)	9	Over 14.0
	1200	20	SSW	2.6	5	1002			29	93%	98% (1.8 mm)		
	1800	21	SW	2.4	4	1001			29	94%	88% (0.9 mm)		
01-07-24	0001	22	SW	2.5	4	1003	29	27	29	93%	96% (3.5 mm)		
	0600	21	WSW	2.4	4	1001			29	95%	90% (3.1 mm)		
	1200	14	WSW	2.1	4	1002			29	93%	89% (2.3 mm)		
	1800	18	SW	2.0	4	1001			29	94%	92% (2.4 mm)		

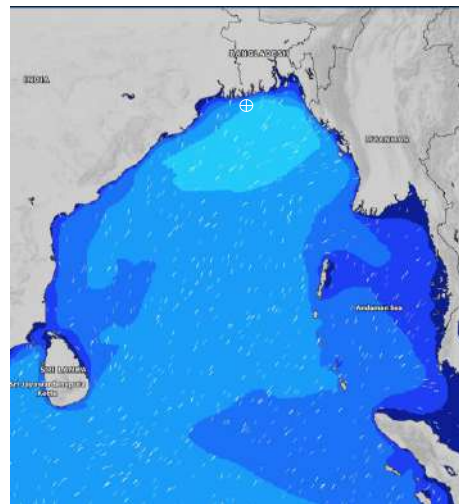
28 June 24 Fri (Probability 98%)



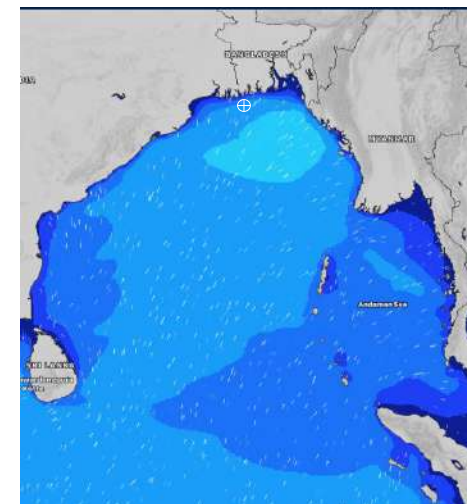
29 June 24 Sat (Probability 95%)



30 June 24 Sun (Probability 90%)



01 July 24 Mon (Probability 80%)



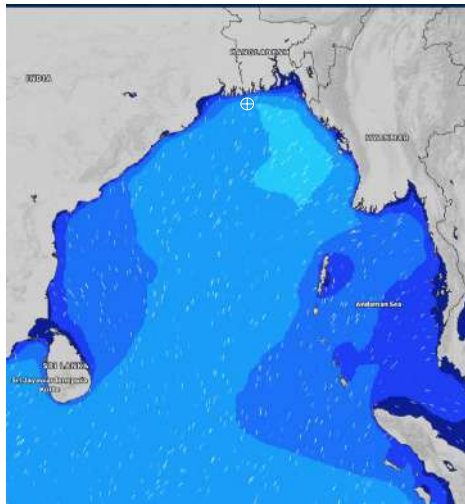
Significant wave height (m)

MARINE WEATHER FORECAST- 10 NM SOUTH OF MONGLA FAIRWAY (Lat 21° 16' N, Long 089° 34' E)

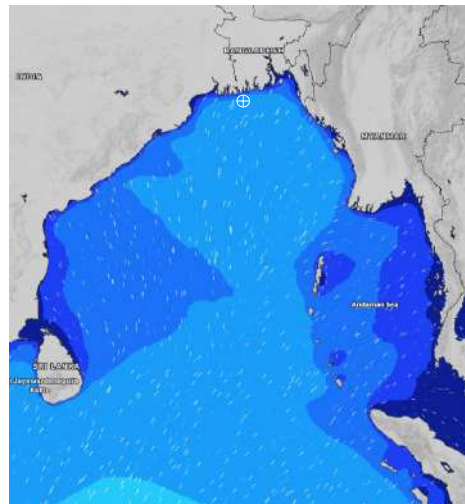
DATE : 28 June to 05 July 2024

Date	Time	Max Wind Spd (kts)	Wind Direction	Wave Ht (m)	Sea State	Baro Pressure	Air Temp		Sea Surface Temp	Humidity (%)	Prob of Rain (%)	Sea State	Wave Ht (m)
							Max	Min					
02-07-24	0001	12	WSW	1.9	4	1002	28	26	29	93%	80% (1.3 mm)	0	0
	0600	23	WSW	2.1	4	1001			28	95%	86% (2.4 mm)	1	0 - 0.1
	1200	28	WSW	2.4	4	1000			28	93%	89% (1.8 mm)	2	0.1 - 0.5
	1800	25	WSW	2.3	4	999			29	93%	81% (0.9 mm)	3	0.5 - 1.25
03-07-24	0001	26	WSW	2.2	4	1000	29	27	27	94%	91% (3.5 mm)	4	1.25 - 2.5
	0600	27	SW	2.3	4	1000			27	94%	77% (1.1 mm)	5	2.5 - 4.0
	1200	21	SW	2.4	4	1001			28	95%	89% (2.3 mm)	6	4.0 - 6.0
	1800	16	WSW	2.2	4	1000			29	95%	92% (2.4 mm)	7	6.0 - 9.0
04-07-24	0001	14	S	2.0	4	1003	30	27	29	93%	98% (2.5 mm)	8	9.0 - 14.0
	0600	19	S	1.8	4	1002			29	95%	90% (2.1 mm)	9	Over 14.0
	1200	20	S	1.9	4	1001			29	93%	97% (2.4 mm)		
	1800	16	S	1.9	4	1003			29	93%	95% (3.5 mm)		
05-07-24	0001	16	S	1.9	4	1004	30	27	29	93%	61% (0.6 mm)		
	0600	12	S	1.8	4	1003			29	95%	44% (0.4 mm)		
	1200	10	S	1.8	4	1003			29	93%	63% (0.5 mm)		
	1800	13	S	1.8	4	1001			29	93%	61% (0.7 mm)		

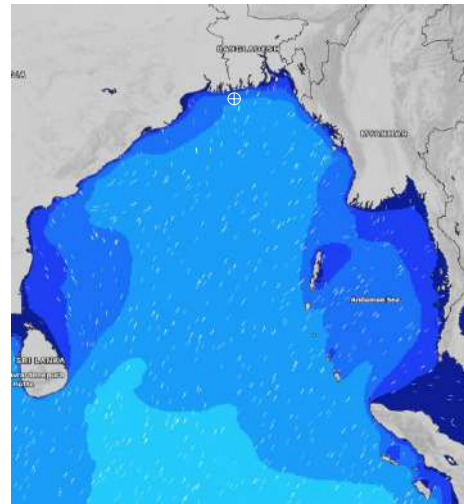
02 July 24 Tue (Probability 70%)



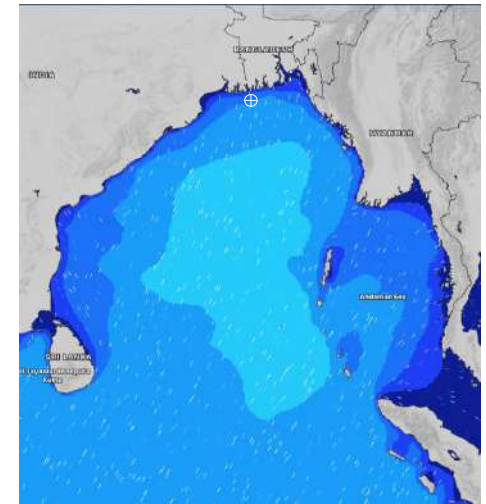
03 July 24 Wed (Probability 60%)



04 July 24 Thu (Probability 50%)



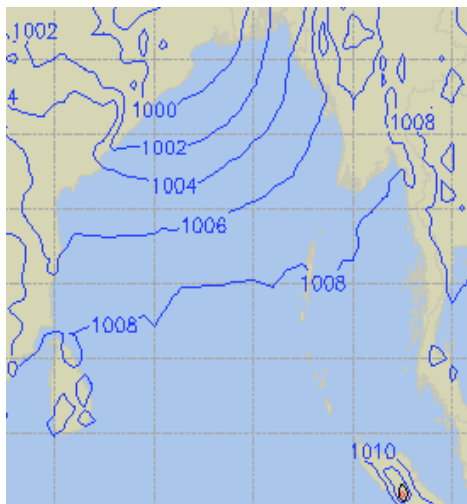
05 July 24 Fri (Probability 50%)



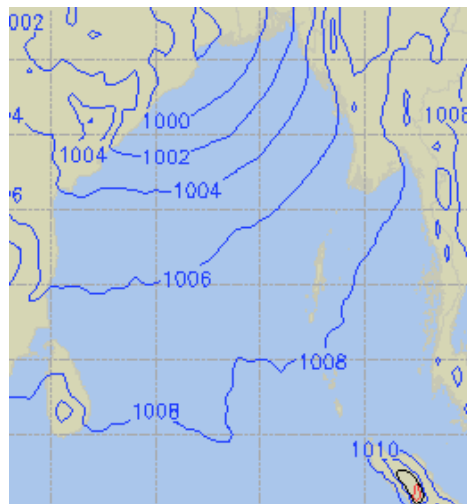
Significant wave height (m)

PREDICTED SURFACE PRESSURE FORECAST (28 June to 04 July 2024)

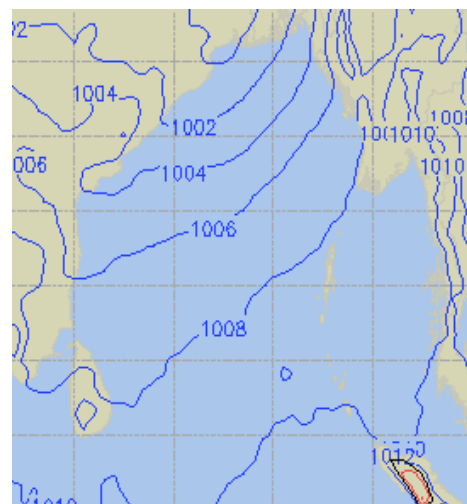
28 June 24 Fri (Probability 98%)



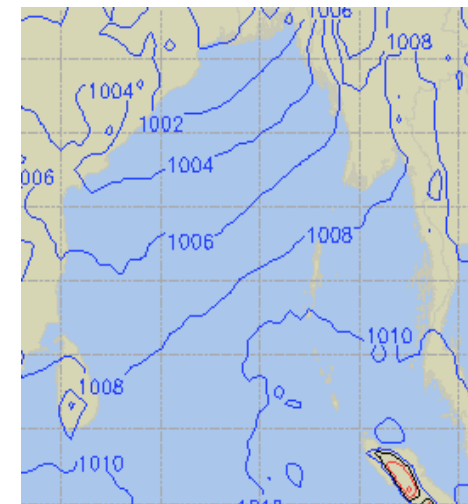
29 June 24 Sat (Probability 95%)



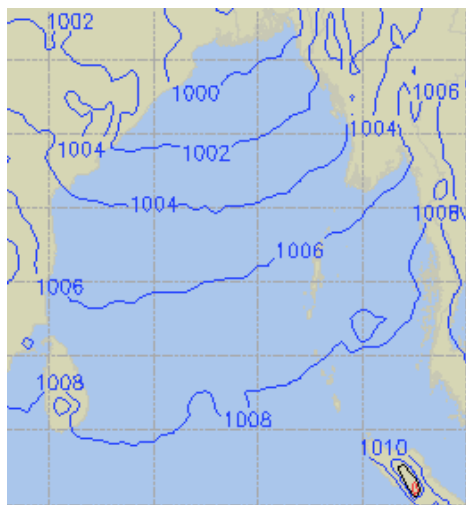
30 June 24 Sun (Probability 90%)



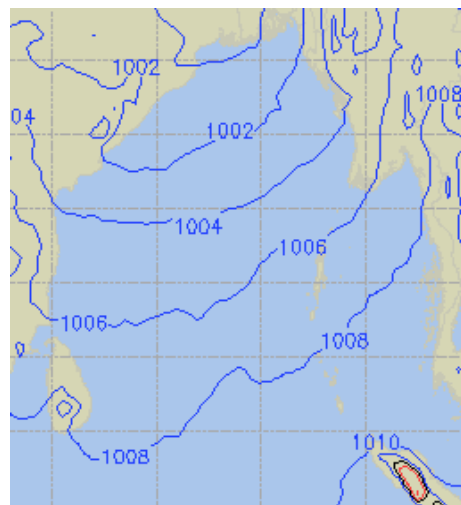
01 July 24 Mon (Probability 80%)



02 July 24 Tue (Probability 70%)



03 July 24 Wed (Probability 60%)



04 July 24 Thu (Probability 50%)

