



**SUMMARY OF MARINE WEATHER FORECAST**  
**COASTAL AREA OF BANGLADESH**  
**DATE: 27 Nov to 04 Dec 2024**



Fleet forecast	<p>The Deep Depression over Southwest Bay of Bengal moved nearly northwards over the area (near Lat: 7.5°N &amp; Long: 82.6°E)</p> <p>It is very likely to continue to move north-northwestwards and intensify further into a cyclonic storm on 27th November. Thereafter, it will continue to move north-northwestwards towards Tamil Nadu coast skirting Sri Lanka coast during subsequent 2 days.</p> <p>Maritime Ports of Chattogram, Cox's Bazar, Mongla &amp; Payra have been advised to keep HOISTED DISTANT CAUTIONARY SIGNAL NO. ONE (R) ONE</p>
Wind direction, speed	North/north-easterly 10 kts, (Temporary gusting up to 25 kts).
Wave height & sea state	Wave height: 0.1 to 2.6 m (Sea state:1 to 4).
Sea surface temperature	20°C - 26°C (May remain nearly unchanged).
Baro pressure	1006-1013 mb
Rainfall	Light to moderate rain/thunder showers occur over Bay of Bengal & adjoining area.
Fog	Light to moderate fog may occur at places over the coastal area during late night till early morning.

**Outlook for 27 Nov to 04 Dec 2024:** Weather may remain mainly dry with temporary partly cloudy sky.

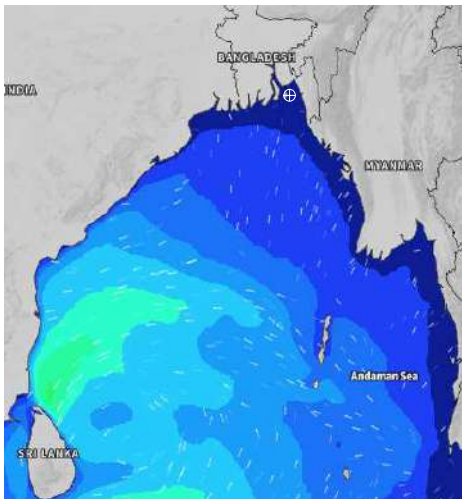


# MARINE WEATHER FORECAST (27 Nov to 04 Dec 2024) NEAR AUTHORITY BUOY (22° 12' N, 091° 38' E)

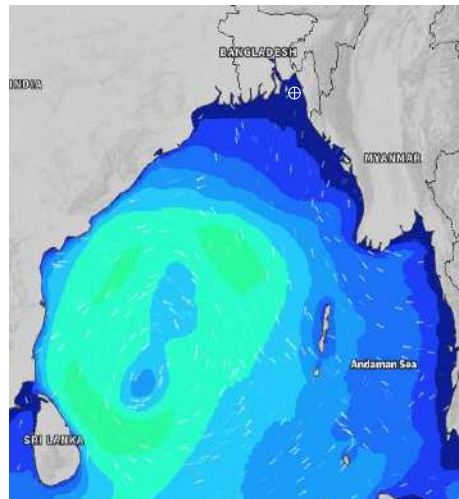


Date	Time	Air Temp (°C)		Sea Surface Temp (°C)	Baro Pressure (mbar)	Wind Direction	Wind Spd (kts)		Wave Ht (m)	Sea State	Humidity (%)	Prob of Rain
		Max	Min				Max	Avg				
27-11-24 (Wednesday)	0001	28	20	21	1013	NE	9	8	0.1	1	82	10% (0.0 mm)
	0600			20	1012	NE	7	6	0.1	1	86	12% (0.0 mm)
	1200			21	1012	NW	5	4	0.1	1	52	10% (0.0 mm)
	1800			24	1011	NW	7	6	0.1	1	63	10% (0.0 mm)
28-11-24 (Thursday)	0001	26	21	22	1012	NNE	7	6	0.1	1	80	10% (0.0 mm)
	0600			22	1012	E	5	4	0.1	1	84	11% (0.0 mm)
	1200			21	1013	NE	8	7	0.1	1	51	10% (0.0 mm)
	1800			21	1012	NE	9	8	0.1	1	63	10% (0.0 mm)
29-11-24 (Friday)	0001	27	22	22	1012	NE	9	8	0.1	1	79	10% (0.0 mm)
	0600			21	1012	ENE	9	8	0.1	1	85	11% (0.0 mm)
	1200			22	1012	NE	12	11	0.2	2	52	10% (0.0 mm)
	1800			22	1012	NE	13	12	0.2	2	64	10% (0.0 mm)
30-11-24 (Saturday)	0001	27	22	22	1011	NE	12	10	0.2	2	79	10% (0.0 mm)
	0600			22	1010	NE	15	11	0.2	2	85	11% (0.0 mm)
	1200			23	1010	ENE	8	7	0.1	1	52	10% (0.0 mm)
	1800			22	1009	E	4	3	0.1	1	64	10% (0.0 mm)

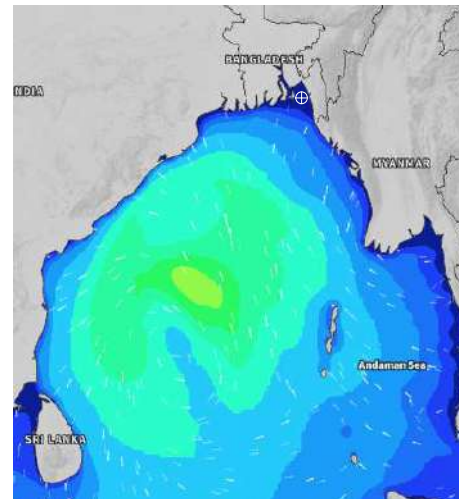
**27 Nov 2024**



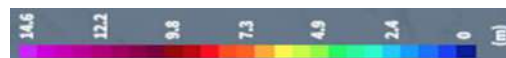
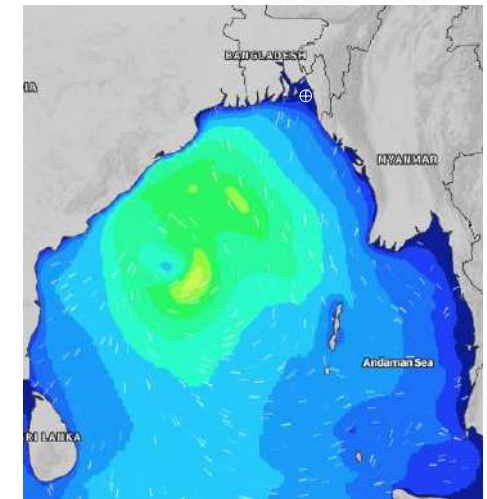
**28 Nov 2024**



**29 Nov 2024**



**30 Nov 2024**



Significant wave height (m)



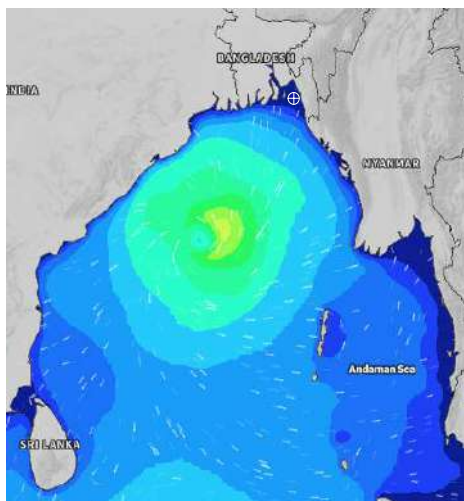
# MARINE WEATHER FORECAST (27 Nov to 04 Dec 2024)

## NEAR AUTHORITY BUOY (22° 12' N, 091° 38' E)

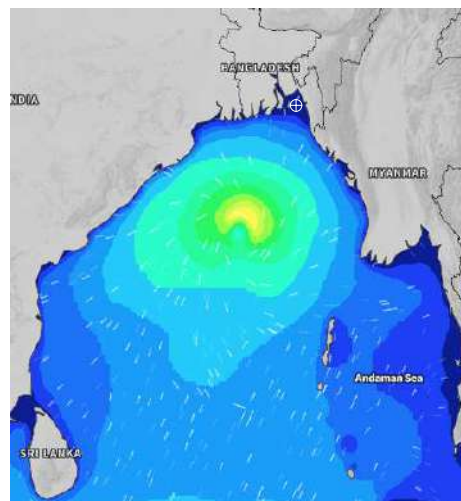


Date	Time	Air Temp (°C)		Sea Surface Temp (°C)	Baro Pressure (mbar)	Wind Direction	Wind Spd (kts)		Wave Ht (m)	Sea State	Humidity (%)	Prob of Rain
		Max	Min				Max	Avg				
01-12-24 (Sunday)	0001	28	21	22	1010	NE	10	9	0.1	1	81	24% (0.0 mm)
	0600			22	1009	ENE	10	9	0.1	1	86	51% (0.3 mm)
	1200			22	1009	NNE	5	4	0.1	1	70	58% (0.5 mm)
	1800			22	1008	ENE	10	9	0.1	1	81	45% (0.3 mm)
02-12-24 (Monday)	0001	28	20	23	1009	ENE	6	5	0.1	1	90	50% (0.3 mm)
	0600			22	1008	NNE	10	9	0.1	1	89	56% (0.5 mm)
	1200			26	1009	NNW	5	4	0.1	1	72	44% (0.3 mm)
	1800			25	1008	NW	4	3	0.1	1	80	24% (0.0 mm)
03-12-24 (Tuesday)	0001	28	19	24	1009	NE	8	7	0.1	1	91	48% (0.3 mm)
	0600			24	1009	ENE	8	7	0.1	1	91	50% (0.3 mm)
	1200			25	1010	NNE	8	7	0.1	1	70	42% (0.3 mm)
	1800			26	1009	ENE	5	4	0.1	1	81	40% (0.2 mm)
04-12-24 (Wednesday)	0001	28	19	24	1010	ENE	8	7	0.1	1	91	48% (0.3 mm)
	0600			24	1010	NNE	7	6	0.1	1	91	50% (0.3 mm)
	1200			26	1010	NNW	5	4	0.1	1	70	42% (0.3 mm)
	1800			25	1009	NW	6	5	0.1	1	81	40% (0.2 mm)

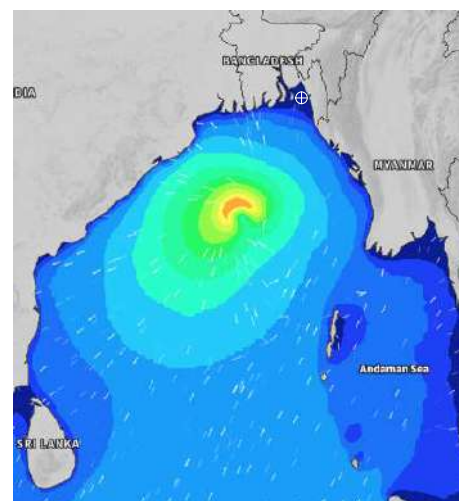
**01 Dec 2024**



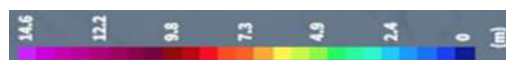
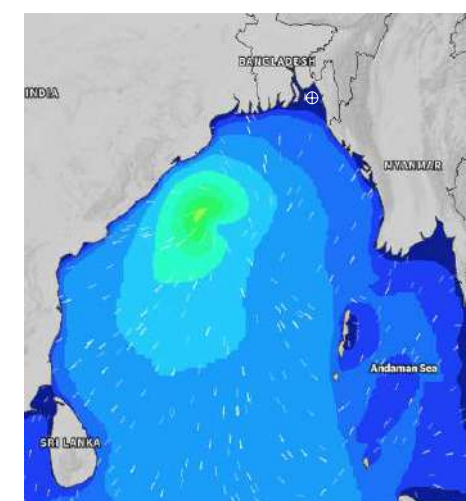
**02 Dec 2024**



**03 Dec 2024**



**04 Dec 2024**



Significant wave height (m)



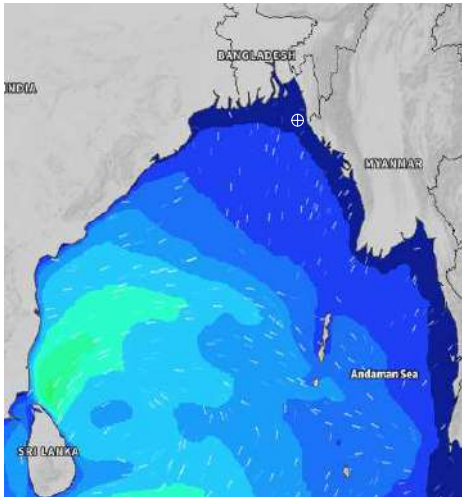
# MARINE WEATHER FORECAST (27 Nov to 04 Dec 2024)

## 20 NM WEST OF ELEPHANT POINT (21° 10' N, 091° 42' E)

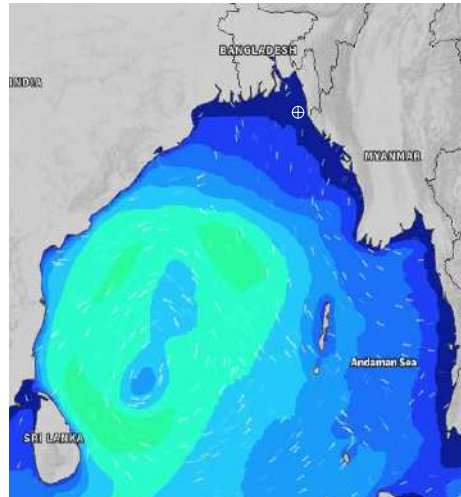


Date	Time	Air Temp (°C)		Sea Surface Temp (°C)	Baro Pressure (mbar)	Wind Direction	Wind Spd (kts)		Wave Ht (m)	Sea State	Humidity (%)	Prob of Rain
		Max	Min				Max	Avg				
27-11-24 (Wednesday)	0001	28	19	25	1012	NNE	11	10	0.5	2	85	10% (0.0 mm)
	0600			23	1012	NNE	11	10	0.5	2	87	11% (0.0 mm)
	1200			24	1012	N	8	7	0.4	2	52	10% (0.0 mm)
	1800			25	1011	NNW	9	8	0.5	2	67	10% (0.0 mm)
28-11-24 (Thursday)	0001	29	21	25	1011	N	9	8	0.4	2	84	10% (0.0 mm)
	0600			24	1012	NNE	5	4	0.4	2	86	10% (0.0 mm)
	1200			23	1012	N	12	11	0.5	2	52	11% (0.0 mm)
	1800			24	1011	NE	11	10	0.4	2	68	10% (0.0 mm)
29-11-24 (Friday)	0001	27	23	24	1012	NE	7	6	0.5	2	82	10% (0.0 mm)
	0600			24	1011	E	9	8	0.8	3	84	10% (0.0 mm)
	1200			25	1012	ESE	4	3	1.2	3	52	10% (0.0 mm)
	1800			25	1011	ENE	4	3	1.3	4	69	11% (0.0 mm)
30-11-24 (Saturday)	0001	28	23	25	1011	NE	4	3	1.4	4	80	10% (0.0 mm)
	0600			24	1010	NE	8	7	1.4	4	84	10% (0.0 mm)
	1200			24	1009	E	5	4	1.4	4	52	10% (0.0 mm)
	1800			24	1009	ESE	12	11	1.4	4	71	11% (0.0 mm)

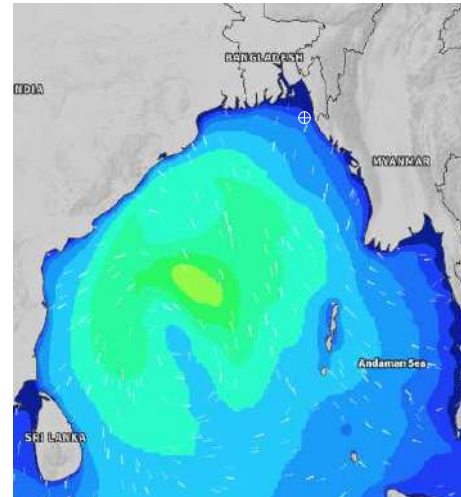
**27 Nov 2024**



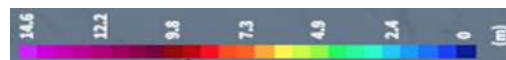
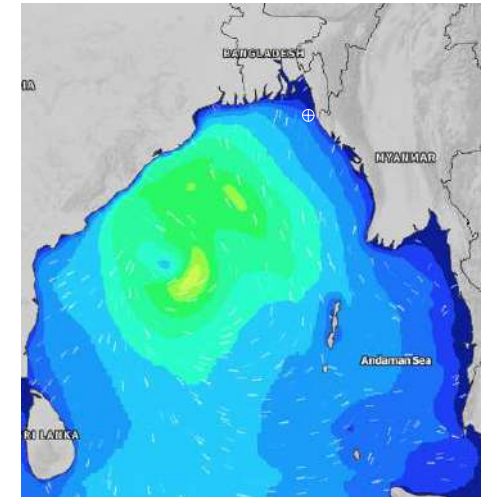
**28 Nov 2024**



**29 Nov 2024**



**30 Nov 2024**



Significant wave height (m)



# MARINE WEATHER FORECAST (27 Nov to 04 Dec 2024)

## 20 NM WEST OF ELEPHANT POINT (21° 10'N, 091° 42'E)



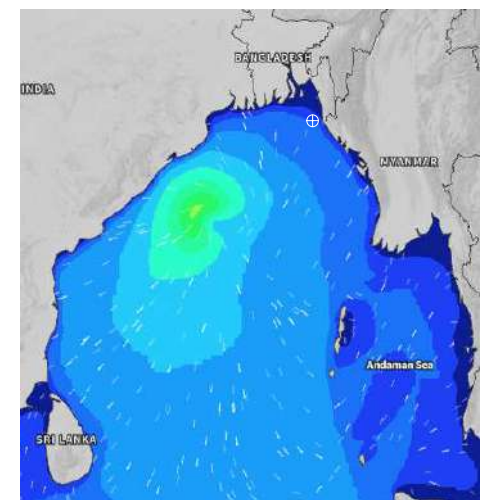
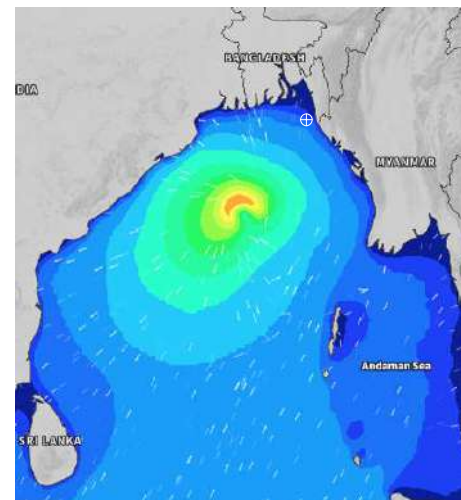
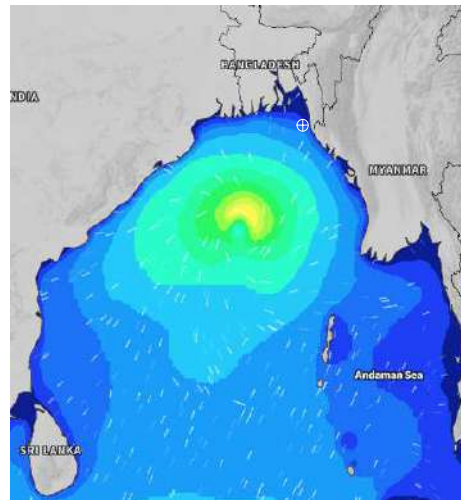
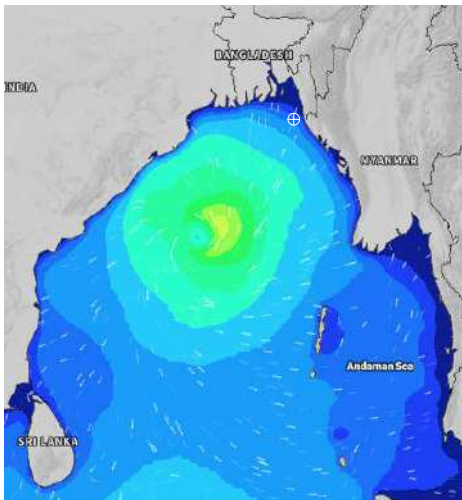
Date	Time	Air Temp (°C)		Sea Surface Temp (°C)	Baro Pressure (mbar)	Wind Direction	Wind Spd (kts)		Wave Ht (m)	Sea State	Humidity (%)	Prob of Rain
		Max	Min				Max	Avg				
01-12-24 (Sunday)	0001	29	23	24	1009	ENE	9	8	1.4	4	80	12% (0.0 mm)
	0600			23	1008	E	10	9	1.3	4	81	10% (0.0 mm)
	1200			24	1008	ENE	5	4	1.4	4	55	11% (0.0 mm)
	1800			23	1007	ENE	10	9	1.5	4	73	12% (0.0 mm)
02-12-24 (Monday)	0001	28	23	24	1008	NE	7	6	1.6	4	81	35% (0.0 mm)
	0600			24	1008	NE	8	7	1.6	4	82	35% (0.2 mm)
	1200			25	1008	E	6	5	1.5	4	70	34% (0.2 mm)
	1800			26	1008	ESE	7	6	1.6	4	84	57% (0.5 mm)
03-12-24 (Tuesday)	0001	29	22	26	1009	NE	8	7	1.6	4	89	71% (0.5 mm)
	0600			25	1009	NE	7	6	1.5	4	89	58% (0.5 mm)
	1200			26	1009	E	6	5	1.4	4	74	48% (0.4 mm)
	1800			26	1008	ESE	11	10	1.4	4	79	35% (0.2 mm)
04-12-24 (Wednesday)	0001	28	21	26	1009	NE	10	9	1.4	4	90	57% (0.2 mm)
	0600			26	1009	NE	7	6	1.3	4	90	43% (0.3 mm)
	1200			22	1010	E	5	4	1.2	3	72	35% (0.3 mm)
	1800			26	1009	ESE	10	8	1.1	3	82	37% (0.2 mm)

**01 Dec 2024**

**02 Dec 2024**

**03 Dec 2024**

**04 Dec 2024**



Significant wave height (m)



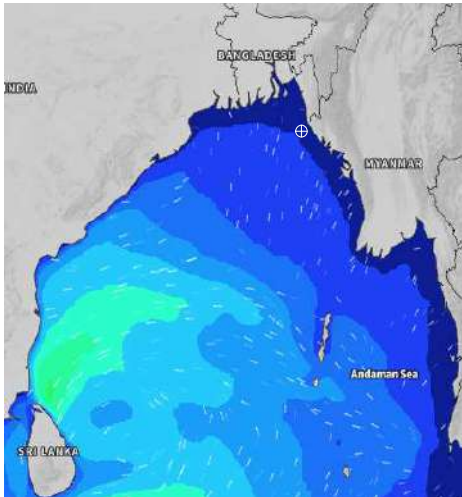
## MARINE WEATHER FORECAST (27 Nov to 04 Dec 2024)

### 15 NM WEST OF ST. MARTIN'S LIGHT HOUSE (20° 37' N, 092° 03' E)

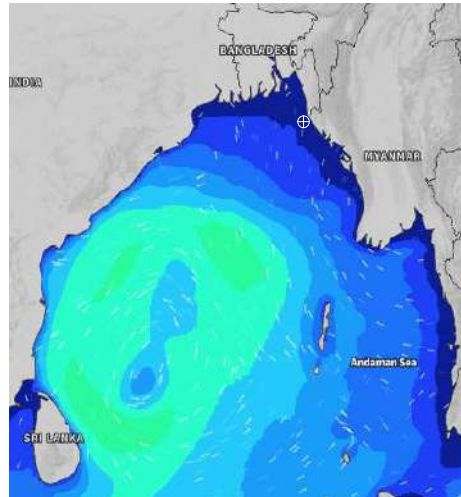


Date	Time	Air Temp (°C)		Sea Surface Temp (°C)	Baro Pressure (mbar)	Wind Direction	Wind Spd (kts)		Wave Ht (m)	Sea State	Humidity (%)	Prob of Rain
		Max	Min				Max	Avg				
27-11-24 (Wednesday)	0001	28	20	25	1012	NNW	11	10	0.7	3	81	10% (0.0 mm)
	0600			24	1011	N	12	10	0.7	3	82	10% (0.0 mm)
	1200			24	1012	N	8	7	0.6	3	54	11% (0.0 mm)
	1800			26	1010	NNW	10	9	0.5	2	66	10% (0.0 mm)
28-11-24 (Thursday)	0001	29	22	26	1011	N	10	9	0.6	3	76	12% (0.0 mm)
	0600			25	1010	NE	8	7	0.5	2	79	10% (0.0 mm)
	1200			25	1013	NNE	4	3	0.5	2	53	11% (0.0 mm)
	1800			25	1012	ENE	4	3	0.5	2	65	10% (0.0 mm)
29-11-24 (Friday)	0001	27	23	26	1012	SE	7	6	0.7	3	77	11% (0.0 mm)
	0600			25	1011	ESE	9	8	1.4	4	80	10% (0.0 mm)
	1200			25	1013	ESE	8	7	1.7	4	54	11% (0.0 mm)
	1800			26	1010	SE	13	12	1.7	4	67	10% (0.0 mm)
30-11-24 (Saturday)	0001	28	23	26	1010	SE	12	10	1.7	4	79	11% (0.0 mm)
	0600			26	1010	ESE	8	7	1.7	4	80	10% (0.0 mm)
	1200			26	1010	ESE	6	5	1.6	4	54	11% (0.0 mm)
	1800			25	1007	SE	7	6	1.7	4	68	10% (0.0 mm)

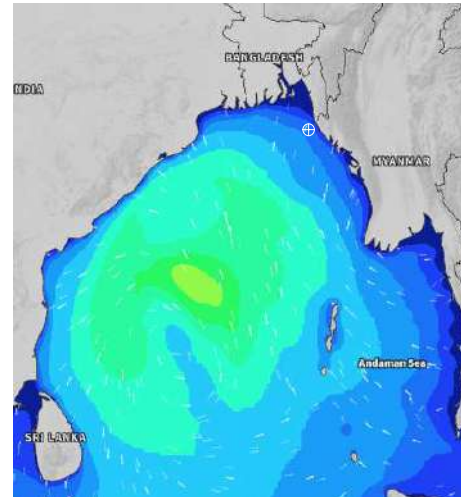
**27 Nov 2024**



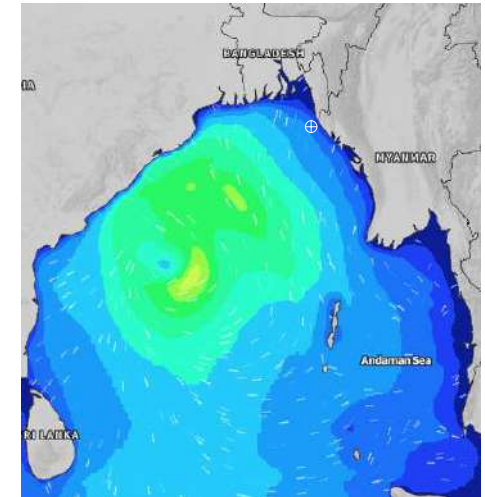
**28 Nov 2024**



**29 Nov 2024**



**30 Nov 2024**



Significant wave height (m)



# MARINE WEATHER FORECAST (27 Nov to 04 Dec 2024)

## 15 NM WEST OF ST. MARTIN'S LIGHT HOUSE (20° 37' N, 092° 03' E)



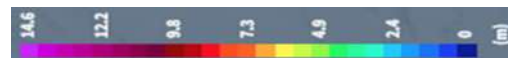
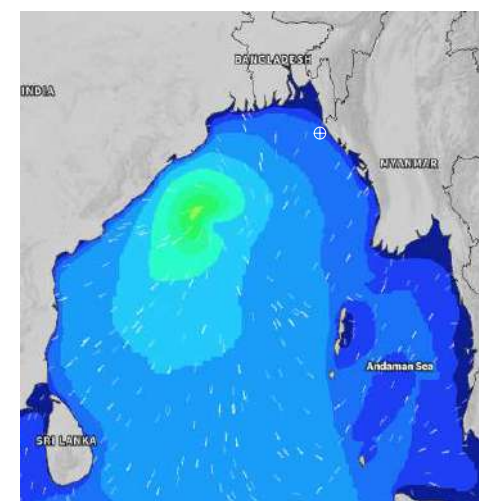
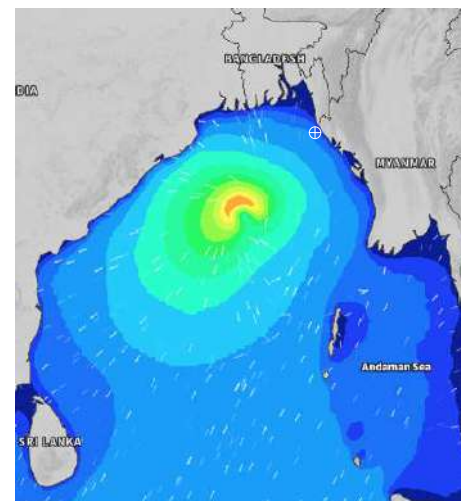
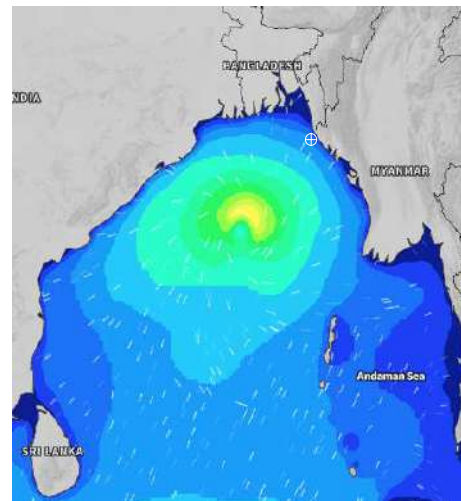
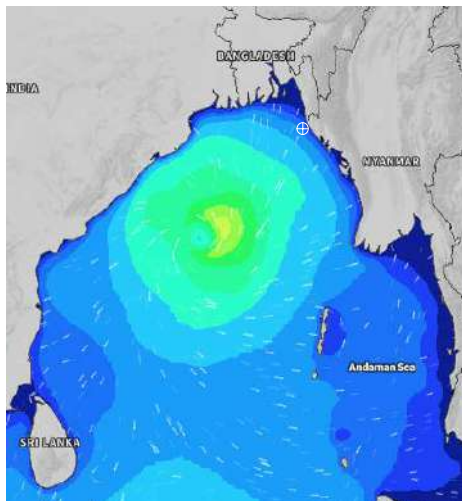
Date	Time	Air Temp (°C)		Sea Surface Temp (°C)	Baro Pressure (mbar)	Wind Direction	Wind Spd (kts)		Wave Ht (m)	Sea State	Humidity (%)	Prob of Rain
		Max	Min				Max	Avg				
01-12-24 (Sunday)	0001	29	24	26	1009	NNE	7	6	1.7	4	77	10% (0.0 mm)
	0600			25	1008	ESE	12	7	1.8	4	76	11% (0.0 mm)
	1200			26	1010	ESE	21	20	2.1	4	58	10% (0.0 mm)
	1800			25	1006	ESE	18	16	2.4	4	72	11% (0.0 mm)
02-12-24 (Monday)	0001	29	23	25	1009	ESE	18	16	2.4	4	78	24% (0.0 mm)
	0600			25	1007	ESE	16	15	2.4	4	77	33% (0.2 mm)
	1200			25	1010	E	11	10	2.3	4	73	52% (0.4 mm)
	1800			25	1006	ENE	12	11	2.3	4	81	51% (0.5 mm)
03-12-24 (Tuesday)	0001	29	23	25	1009	SE	15	14	2.2	4	86	65% (0.5 mm)
	0600			24	1007	ESE	18	16	2.1	4	85	64% (0.5 mm)
	1200			25	1011	ESE	17	15	2.0	4	76	64% (1.5 mm)
	1800			26	1008	SE	16	14	2.0	4	71	52% (0.5 mm)
04-12-24 (Wednesday)	0001	29	22	26	1010	ESE	12	11	1.8	4	86	55% (0.4 mm)
	0600			25	1009	ESE	11	10	1.6	4	86	51% (0.5 mm)
	1200			25	1012	SE	8	7	1.5	4	73	32% (0.2 mm)
	1800			26	1010	ESE	4	3	1.4	4	78	28% (0.1 mm)

**01 Dec 2024**

**02 Dec 2024**

**03 Dec 2024**

**04 Dec 2024**



Significant wave height (m)



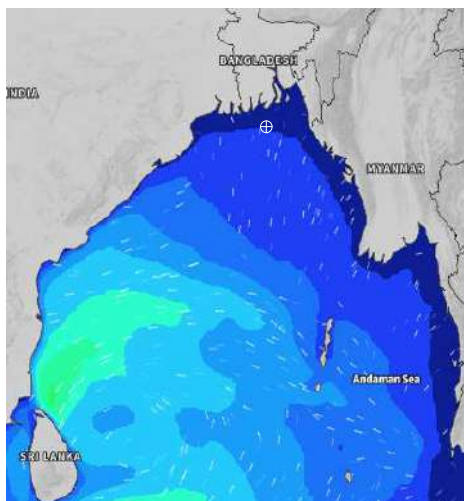
# MARINE WEATHER FORECAST (27 Nov to 04 Dec 2024)

## 40 NM EAST OF PAYRA FAIRWAY (21° 07' N, 090° 45' E)

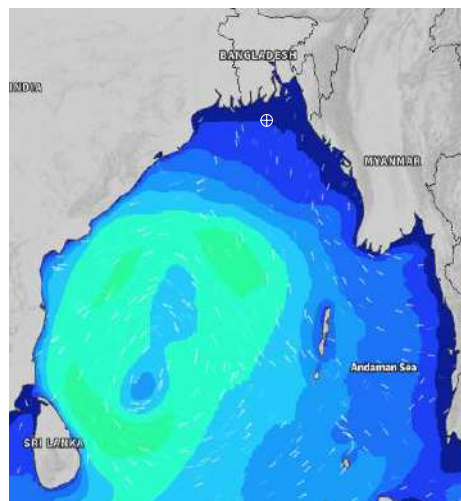


Date	Time	Air Temp (°C)		Sea Surface Temp (°C)	Baro Pressure (mbar)	Wind Direction	Wind Spd (kts)		Wave Ht (m)	Sea State	Humidity (%)	Prob of Rain
		Max	Min				Max	Avg				
27-11-24 (Wednesday)	0001	27	18	24	1012	NNW	11	10	0.6	3	80	11% (0.0 mm)
	0600			24	1012	NNE	14	12	0.7	3	83	10% (0.0 mm)
	1200			24	1012	N	10	9	0.6	3	55	11% (0.0 mm)
	1800			24	1011	N	11	10	0.6	3	69	10% (0.0 mm)
28-11-24 (Thursday)	0001	28	19	25	1011	NNE	10	9	0.5	3	84	11% (0.0 mm)
	0600			25	1011	NNE	10	9	0.6	3	84	10% (0.0 mm)
	1200			24	1012	NE	6	5	0.5	3	51	11% (0.0 mm)
	1800			24	1012	NE	9	8	0.6	3	67	10% (0.0 mm)
29-11-24 (Friday)	0001	26	21	24	1012	E	10	9	0.8	3	83	11% (0.0 mm)
	0600			24	1011	ENE	13	12	1.6	4	83	15% (0.0 mm)
	1200			24	1012	E	10	9	2.0	4	52	12% (0.0 mm)
	1800			25	1011	E	13	12	2.0	4	68	10% (0.0 mm)
30-11-24 (Saturday)	0001	27	22	25	1011	SE	14	11	2.1	4	81	11% (0.0 mm)
	0600			25	1010	SE	12	12	2.2	4	84	12% (0.0 mm)
	1200			25	1010	ENE	10	9	2.1	4	54	12% (0.0 mm)
	1800			25	1008	NE	11	10	2.1	4	65	10% (0.0 mm)

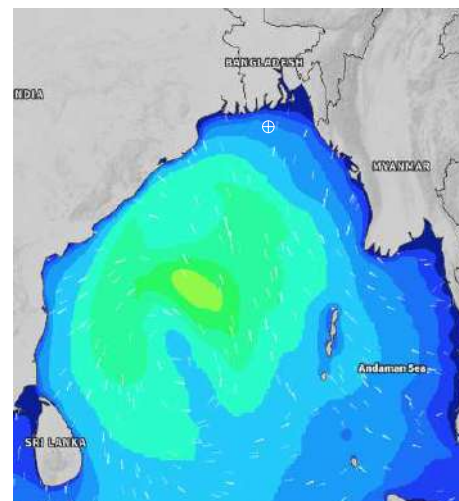
**27 Nov 2024**



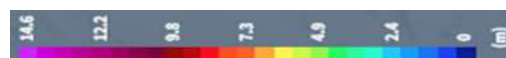
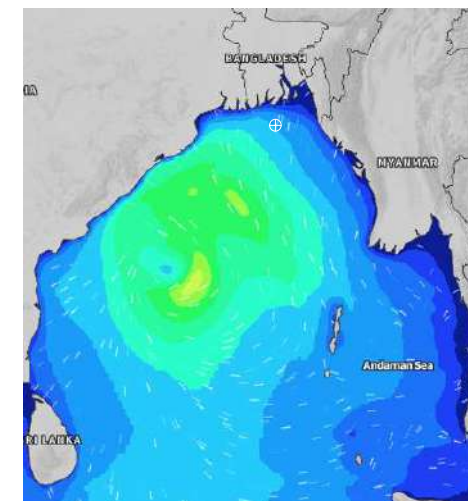
**28 Nov 2024**



**29 Nov 2024**



**30 Nov 2024**



Significant wave height (m)





# MARINE WEATHER FORECAST (27 Nov to 04 Dec 2024)

## 40 NM EAST OF PAYRA FAIRWAY (21° 07' N, 090° 45' E)



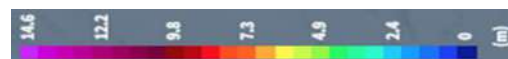
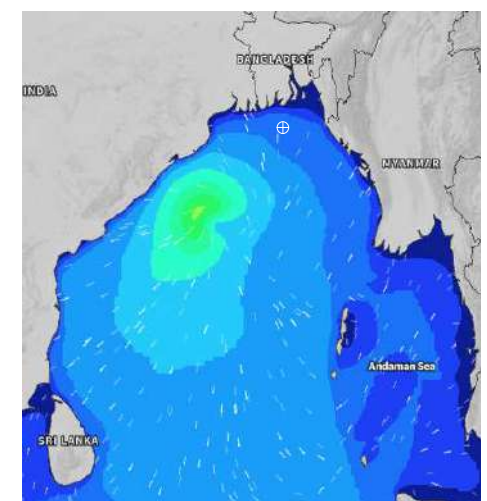
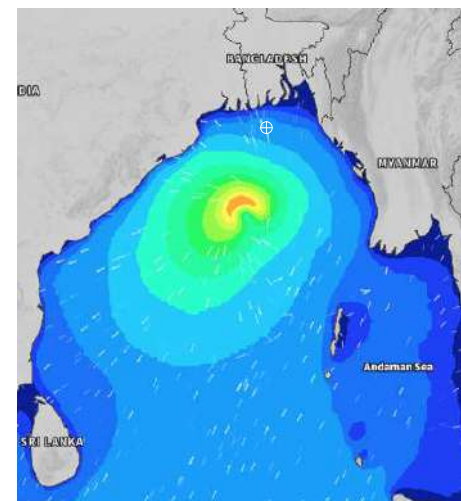
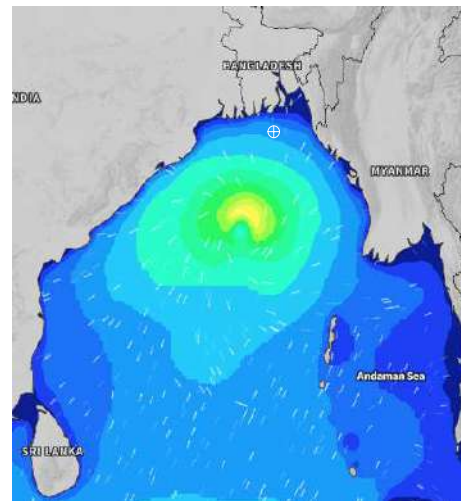
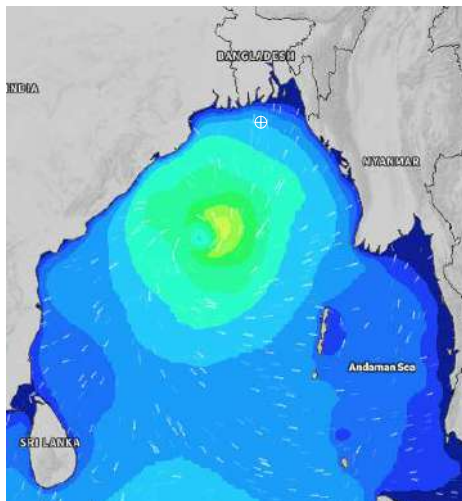
Date	Time	Air Temp (°C)		Sea Surface Temp (°C)	Baro Pressure (mbar)	Wind Direction	Wind Spd (kts)		Wave Ht (m)	Sea State	Humidity (%)	Prob of Rain
		Max	Min				Max	Avg				
01-12-24 (Sunday)	0001	27	22	24	1009	NNE	12	11	2.1	4	81	12% (0.0 mm)
	0600			24	1008	ENE	19	18	2.2	4	81	10% (0.0 mm)
	1200			25	1008	ESE	19	18	2.3	4	53	11% (0.0 mm)
	1800			24	1007	E	21	20	2.5	4	68	12% (0.0 mm)
02-12-24 (Monday)	0001	27	22	25	1007	ESE	20	19	2.5	4	79	34% (0.2 mm)
	0600			25	1007	ESE	18	17	2.5	4	82	44% (0.4 mm)
	1200			24	1008	NE	18	17	2.5	4	66	32% (0.2 mm)
	1800			23	1008	NE	21	20	2.5	4	79	32% (0.2 mm)
03-12-24 (Tuesday)	0001	27	21	24	1008	NNE	21	20	2.5	4	88	56% (0.4 mm)
	0600			23	1008	ENE	25	20	2.5	4	89	66% (0.5 mm)
	1200			24	1010	ESE	17	16	2.4	4	70	57% (0.9 mm)
	1800			24	1009	E	14	13	2.3	4	81	51% (0.4 mm)
04-12-24 (Wednesday)	0001	27	20	24	1010	ESE	15	12	2.0	4	90	57% (0.9 mm)
	0600			25	1010	ESE	14	12	1.8	4	90	51% (0.4 mm)
	1200			25	1010	NE	11	11	1.7	4	70	32% (0.2 mm)
	1800			25	1010	NE	8	8	1.6	4	79	49% (0.4 mm)

**01 Dec 2024**

**02 Dec 2024**

**03 Dec 2024**

**04 Dec 2024**



Significant wave height (m)



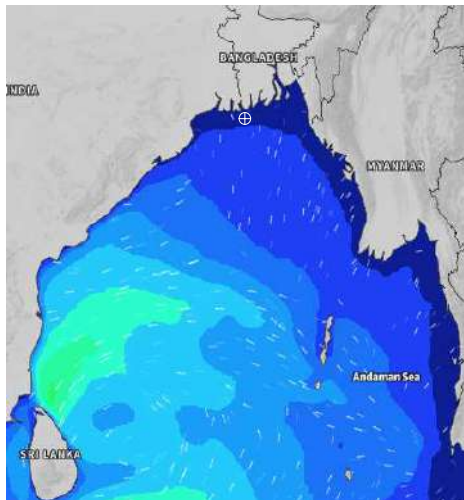
# MARINE WEATHER FORECAST (27 Nov to 04 Dec 2024)

## 10 NM SOUTH OF MONGLA FAIRWAY (21° 16' N, 089° 34' E)

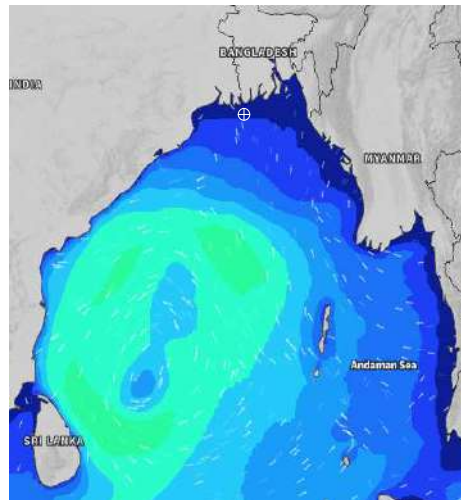


Date	Time	Air Temp (°C)		Sea Surface Temp (°C)	Baro Pressure (mbar)	Wind Direction	Wind Spd (kts)		Wave Ht (m)	Sea State	Humidity (%)	Prob of Rain
		Max	Min				Max	Avg				
27-11-24 (Wednesday)	0001	28	17	25	1013	N	12	10	0.5	2	87	10% (0.0 mm)
	0600			24	1012	NNE	12	11	0.6	3	91	11% (0.0 mm)
	1200			23	1013	NNE	9	8	0.6	3	50	11% (0.0 mm)
	1800			24	1011	ENE	6	5	0.5	2	64	12% (0.0 mm)
28-11-24 (Thursday)	0001	28	18	25	1012	N	8	7	0.5	2	85	11% (0.0 mm)
	0600			24	1011	NNE	14	12	0.6	3	90	12% (0.0 mm)
	1200			24	1012	NE	10	9	0.6	3	47	10% (0.0 mm)
	1800			22	1012	ENE	10	9	0.6	3	65	12% (0.0 mm)
29-11-24 (Friday)	0001	27	20	23	1012	ENE	10	9	0.8	3	86	11% (0.0 mm)
	0600			24	1011	ENE	14	12	1.7	4	91	12% (0.0 mm)
	1200			24	1012	E	15	14	2.2	4	48	10% (0.0 mm)
	1800			24	1010	E	18	17	2.4	4	65	12% (0.0 mm)
30-11-24 (Saturday)	0001	27	21	25	1010	ENE	15	13	2.4	4	84	11% (0.0 mm)
	0600			24	1010	ENE	14	13	2.4	4	90	12% (0.0 mm)
	1200			24	1010	ENE	14	13	2.5	4	49	10% (0.0 mm)
	1800			24	1008	E	17	16	2.4	4	65	10% (0.0 mm)

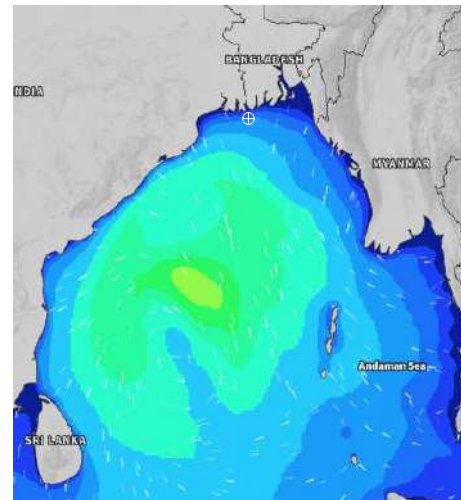
**27 Nov 2024**



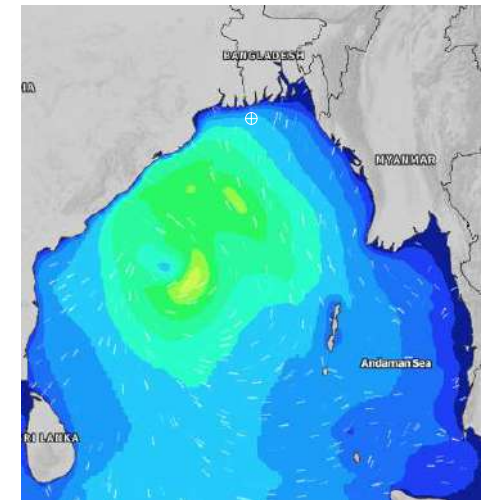
**28 Nov 2024**



**29 Nov 2024**



**30 Nov 2024**



Significant wave height (m)

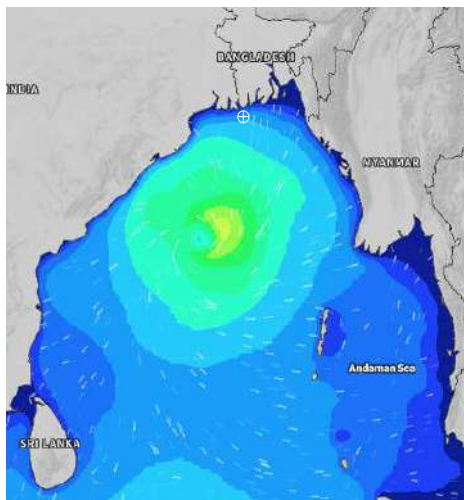


## MARINE WEATHER FORECAST (27 Nov to 04 Dec 2024) 10 NM SOUTH OF MONGLA FAIRWAY (21° 16' N, 089° 34' E)

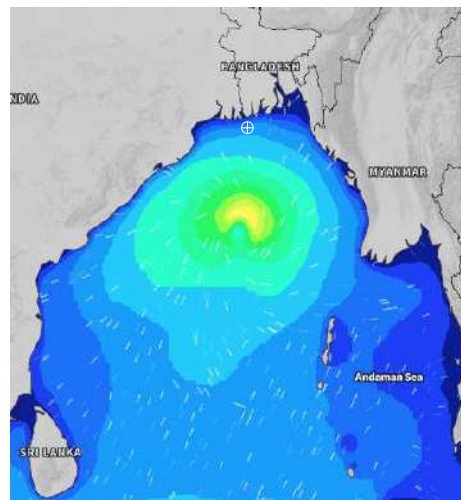


Date	Time	Air Temp (°C)		Sea Surface Temp (°C)	Baro Pressure (mbar)	Wind Direction	Wind Spd (kts)		Wave Ht (m)	Sea State	Humidity (%)	Prob of Rain
		Max	Min				Max	Avg				
01-12-24 (Sunday)	0001	27	21	24	1008	ENE	17	16	2.4	4	83	11% (0.0 mm)
	0600			24	1007	ENE	18	16	2.4	4	89	11% (0.0 mm)
	1200			24	1008	ENE	21	20	2.5	4	51	12% (0.0 mm)
	1800			24	1006	ENE	22	20	2.6	4	65	10% (0.0 mm)
02-12-24 (Monday)	0001	27	20	25	1008	ENE	18	15	2.5	4	82	24% (0.0 mm)
	0600			24	1007	ENE	18	15	2.5	4	87	30% (0.2 mm)
	1200			24	1009	ENE	20	18	2.6	4	51	32% (0.2 mm)
	1800			23	1008	E	20	18	2.6	4	76	24% (0.0 mm)
03-12-24 (Tuesday)	0001	27	19	24	1009	ENE	18	17	2.5	4	89	32% (0.2 mm)
	0600			23	1008	ENE	22	20	2.5	4	92	34% (0.2 mm)
	1200			23	1010	ENE	20	18	2.4	4	65	31% (0.1 mm)
	1800			24	1009	ENE	17	16	2.4	4	67	24% (0.0 mm)
04-12-24 (Wednesday)	0001	28	19	24	1010	ENE	17	15	2.0	4	91	12% (0.0 mm)
	0600			25	1010	ENE	18	14	1.8	4	92	11% (0.0 mm)
	1200			25	1011	ENE	14	12	1.6	4	67	12% (0.0 mm)
	1800			25	1010	ENE	11	9	1.4	4	76	10% (0.0 mm)

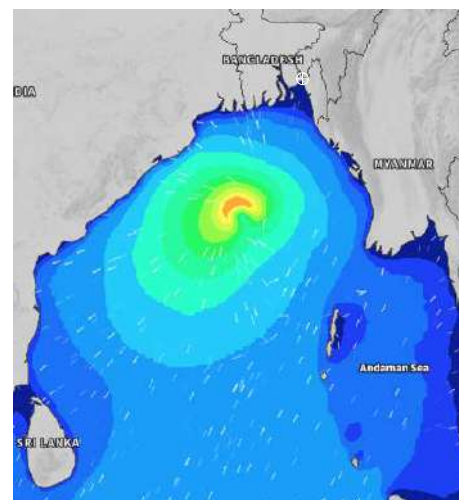
**01 Dec 2024**



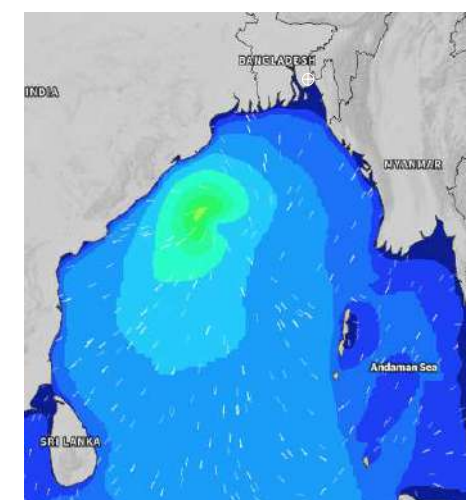
**02 Dec 2024**



**03 Dec 2024**



**04 Dec 2024**



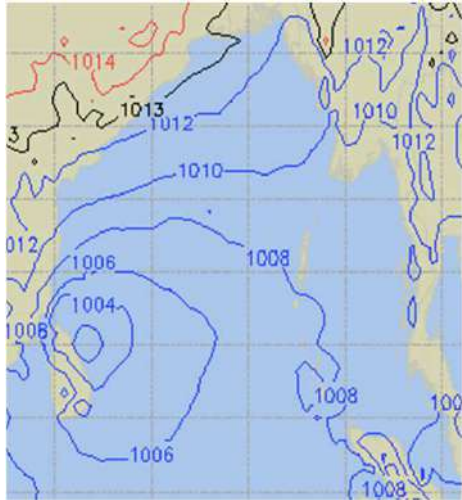
Significant wave height (m)



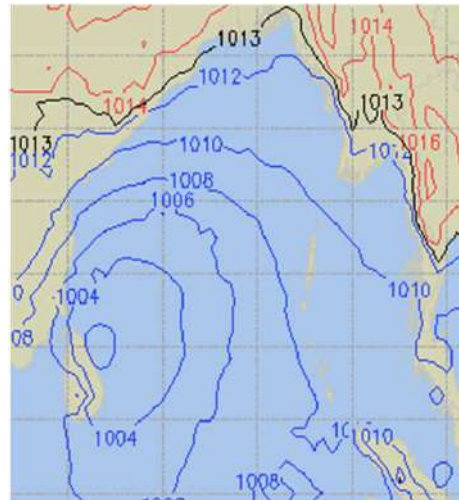
# PREDICTED SURFACE PRESSURE FORECAST (27 Nov to 03 Dec 2024)



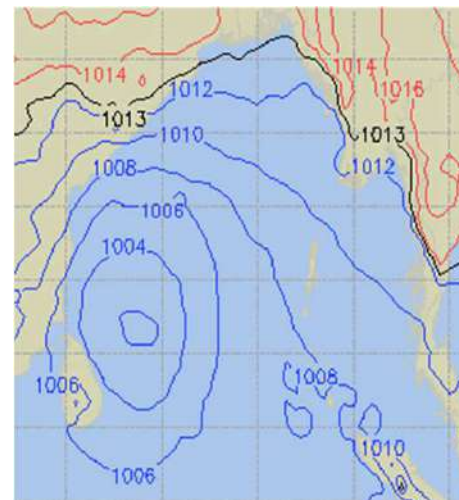
**27 NOV 2024**



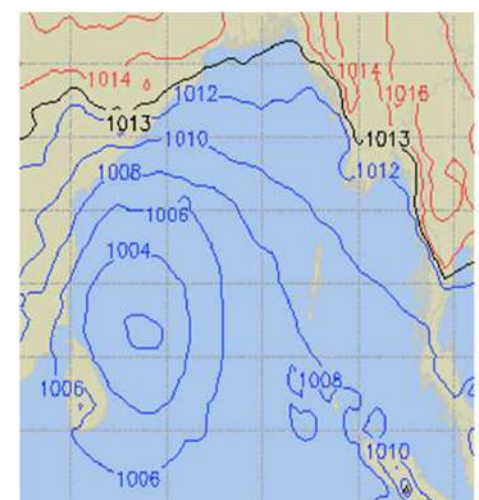
**28 NOV 2024**



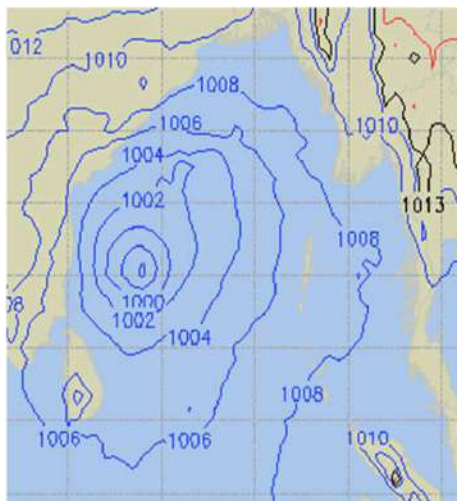
**29 NOV 2024**



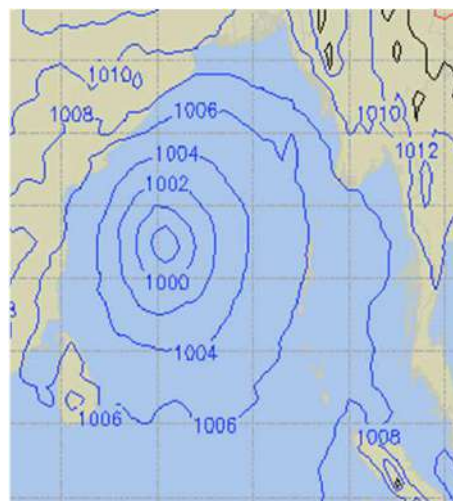
**30 NOV 2024**



**01 Dec 2024**



**02 Dec 2024**



**03 Dec 2024**

