



SUMMARY OF MARINE WEATHER FORECAST
COASTAL AREA OF BANGLADESH
DATE: 27 April to 04 May 2026



Fleet Forecast	The trough of low lies over North Bay of Bengal.
Wind Direction, Speed	South-west/Southerly 15-20 kts, temporary gusting to 35 kts.
Wave Height & Sea State	Ctg Outer Anchorage: 0.5 to 1.0 m (Sea state: 2 to 3) Abeam to Cox's Bazar: 0.9 to 1.9 m (Sea state: 3 to 4) St. Martin's Island: 0.9 to 1.8 m (Sea state 3 to 4) Payra Fairway Buoy: 1.7 to 2.5 m (Sea state: 4 to 5) Mongla Fairway Buoy: 1.8 to 2.6 m (Sea state: 4 to 5) Outer EEZ: 1.4 to 2.1 m (Sea state: 4)
Sea Surface Temperature	26° C - 29° C
Baro Pressure	1004-1010 mb
Rainfall	Partly cloudy to cloudy sky rain/thunder showers with gusty wind is likely to occur over Bay of Bengal and adjoining area.
Fog & Visibility	Hazy condition over the Bay of Bengal & coastal area, Visibility 1.5 – 5.0 km

Marine Weather Outlook (27 April to 04 May 2026):

- Partly cloudy to cloudy sky rain/thunder showers with gusty wind is likely to occur over Bay of Bengal and adjoining area.
- Hazy condition over the Bay of Bengal & coastal area during early morning.
- Rainfall activity may increase.



MARINE WEATHER FORECAST (27 April to 04 May 2026)

PATENGA POINT (22° 12' N, 091° 38' E)



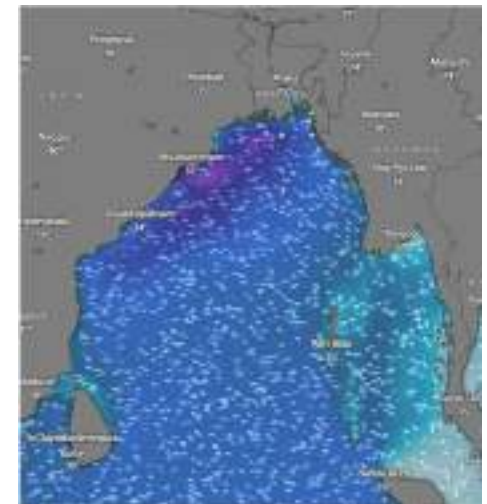
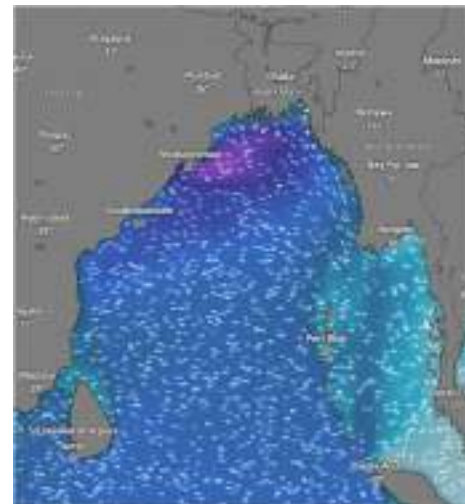
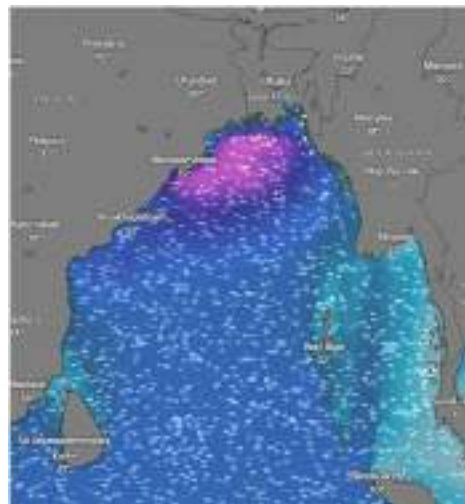
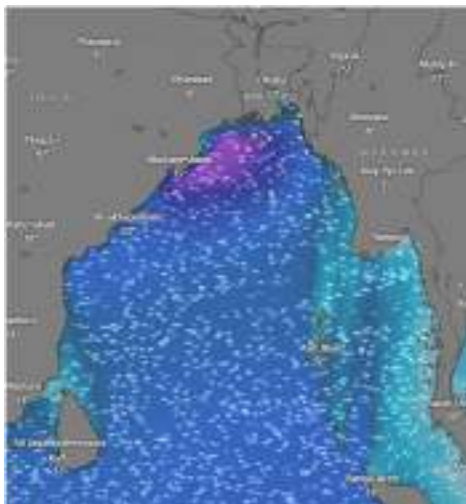
Date	Time	Air Temp (°C)		Sea Surface Temp (°C)	Baro Pressure (mbar)	Wind Direction	Wind Spd (kts)		Wave Ht (m)	Sea State	Humidity (%)	Prob of Rain (%)	Amount of Rain (mm)
		Max	Min				Gusting	Avg					
27-04-26 (Monday)	0001	33	27	28	1007	S	20	15	0.7	3	88	09	0.0
	0600			27	1008	SSE	17	13	0.7	3	89	45	0.1
	1200			30	1007	SSW	27	19	0.8	3	74	25	0.0
	1800			28	1006	SSW	26	17	0.8	3	86	28	0.1
28-04-26 (Tuesday)	0001	32	26	28	1007	S	20	15	1.0	3	89	09	0.0
	0600			27	1008	S	24	16	1.0	3	90	12	0.0
	1200			30	1006	SSW	28	20	1.0	3	75	08	0.0
	1800			28	1005	SSW	17	13	1.0	3	87	15	0.0
29-04-26 (Wednesday)	0001	32	26	28	1007	SSE	18	13	1.0	3	89	08	0.0
	0600			27	1008	SSE	18	14	1.0	3	91	12	0.0
	1200			30	1006	SSW	16	11	1.0	3	76	05	0.0
	1800			28	1005	SSE	23	16	1.0	3	87	11	0.0
30-04-26 (Thursday)	0001	32	26	28	1008	S	18	13	1.0	3	88	30	0.2
	0600			27	1009	S	15	09	1.0	3	91	28	0.1
	1200			30	1007	SSW	18	12	0.9	3	78	14	0.0
	1800			28	1006	S	20	13	0.9	3	85	36	0.2

27 Apr 2026

28 Apr 2026

29 Apr 2026

30 Apr 2026



Significant wave height (m)



MARINE WEATHER FORECAST (27 April to 04 May 2026) PATENGA POINT (22° 12' N, 091° 38' E)



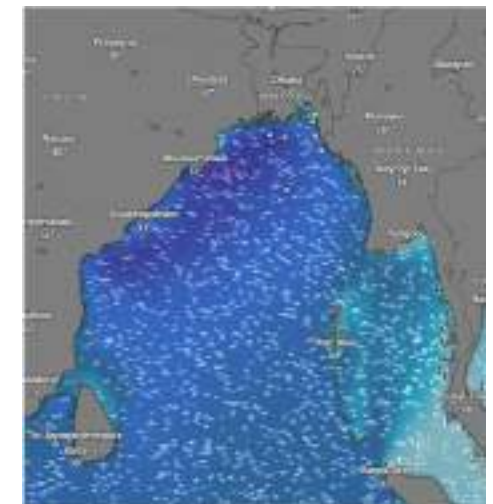
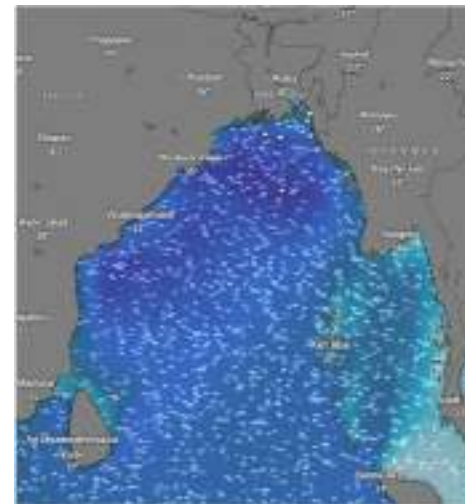
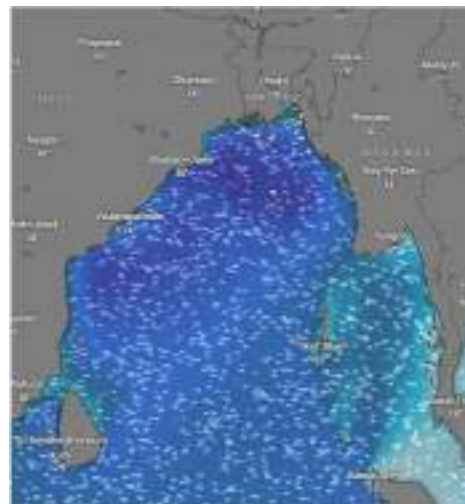
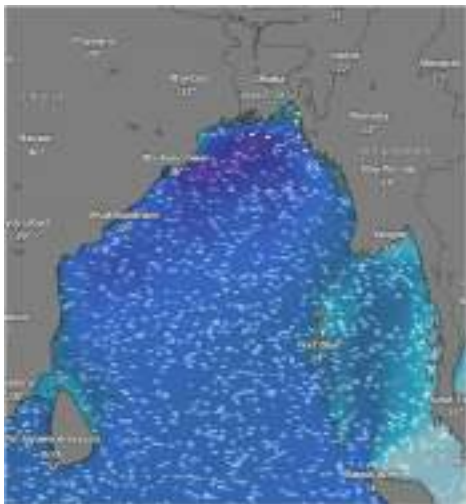
Date	Time	Air Temp (°C)		Sea Surface Temp (°C)	Baro Pressure (mbar)	Wind Direction	Wind Spd (kts)		Wave Ht (m)	Sea State	Humidity (%)	Prob of Rain (%)	Amount of Rain (mm)
		Max	Min				Gusting	Avg					
01-05-26 (Friday)	0001	32	26	28	1009	SSE	17	13	0.6	3	89	40	0.4
	0600			27	1010	SSE	16	12	0.7	3	91	34	0.2
	1200			30	1008	SSW	25	17	0.5	3	76	22	0.1
	1800			28	1006	SE	17	13	0.5	3	87	30	0.2
02-05-26 (Saturday)	0001	32	26	28	1007	SSE	24	16	0.7	3	90	32	0.2
	0600			27	1008	SSE	18	13	0.5	3	91	24	0.1
	1200			30	1006	SSW	15	10	0.5	3	75	12	0.0
	1800			28	1005	SSE	18	14	0.8	3	86	16	0.0
03-05-26 (Sunday)	0001	32	26	28	1007	SSE	26	17	0.8	3	90	35	0.2
	0600			27	1008	SSE	24	16	0.7	3	91	26	0.1
	1200			30	1006	SSW	17	12	0.7	3	74	15	0.0
	1800			28	1005	SSE	24	16	0.5	3	85	25	0.1
04-05-26 (Monday)	0001	32	26	28	1007	SSE	28	17	0.9	3	91	32	0.2
	0600			27	1008	SSE	22	16	0.8	3	90	27	0.2
	1200			30	1006	SSW	18	11	0.8	3	76	16	0.0
	1800			28	1005	SSE	26	21	0.8	3	84	26	0.1

01 May 2026

02 May 2026

03 May 2026

04 May 2026



Significant wave height (m)



MARINE WEATHER FORECAST (27 April to 04 May 2026)

ABEAM TO KUTUBDIA (21° 51' N, 091° 40' E)



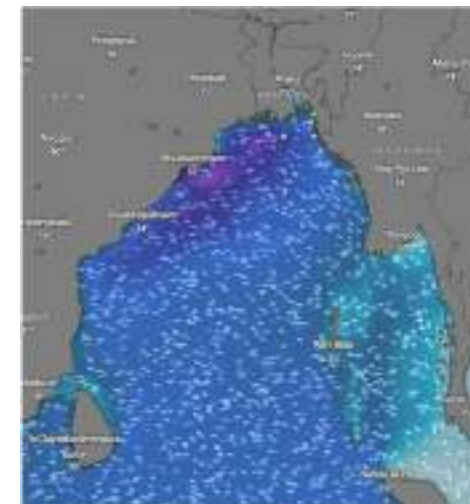
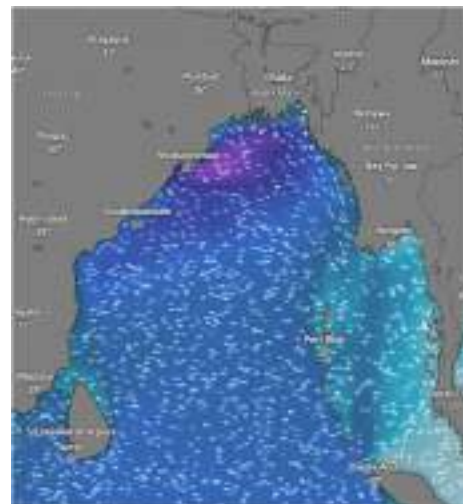
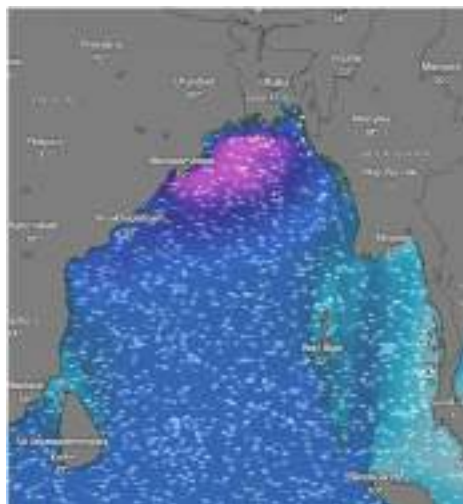
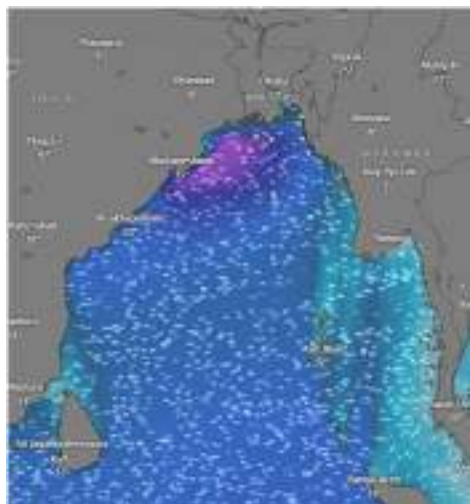
Date	Time	Air Temp (°C)		Sea Surface Temp (°C)	Baro Pressure (mbar)	Wind Direction	Wind Spd (kts)		Wave Ht (m)	Sea State	Humidity (%)	Prob of Rain (%)	Amount of Rain (mm)
		Max	Min				Gusting	Avg					
27-04-26 (Monday)	0001	33	26	28	1007	S	24	16	0.9	3	87	10	0.0
	0600			27	1008	S	26	18	0.8	3	89	15	0.0
	1200			30	1007	SSW	28	20	1.0	3	75	09	0.0
	1800			28	1006	SSW	26	18	1.0	3	81	13	0.0
28-04-26 (Tuesday)	0001	32	26	28	1007	S	25	18	1.0	3	90	34	0.2
	0600			27	1008	S	29	21	1.0	3	91	24	0.1
	1200			30	1006	SSW	28	21	1.1	3	74	15	0.0
	1800			28	1005	SSW	25	18	1.1	3	85	26	0.1
29-04-26 (Wednesday)	0001	32	26	28	1007	SSE	20	15	1.0	3	89	32	0.1
	0600			27	1008	SSW	27	19	1.0	3	91	41	0.4
	1200			30	1006	SSW	26	18	1.1	3	75	22	0.1
	1800			28	1005	SSE	27	21	1.0	3	87	36	0.3
30-04-26 (Thursday)	0001	32	26	28	1008	SSW	22	16	1.0	3	89	32	0.2
	0600			27	1009	SSW	26	18	1.0	3	91	28	0.1
	1200			30	1007	SSW	27	19	0.9	3	75	22	0.1
	1800			28	1006	SSW	16	10	0.9	3	87	45	0.5

27 Apr 2026

28 Apr 2026

29 Apr 2026

30 Apr 2026



Significant wave height (m)



MARINE WEATHER FORECAST (27 April to 04 May 2026)

ABEAM TO KUTUBDIA (21° 51' N, 091° 40' E)



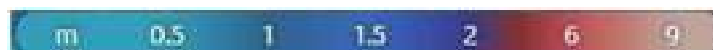
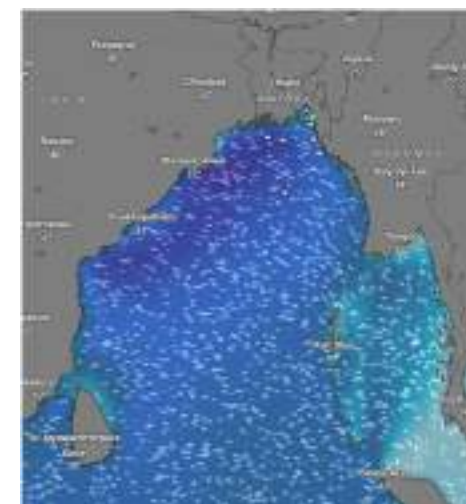
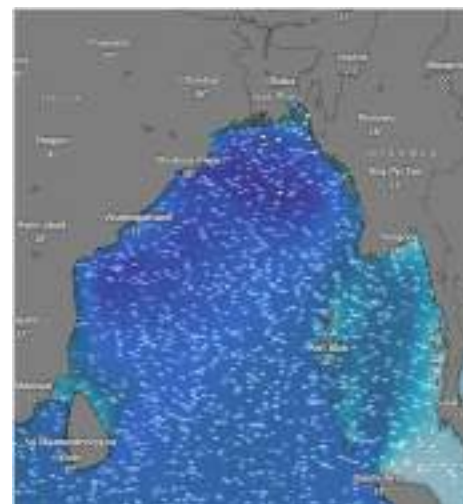
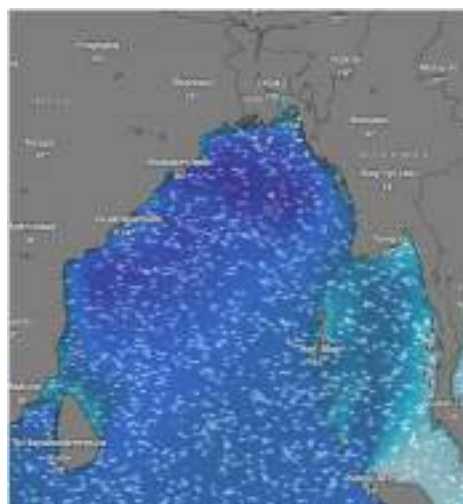
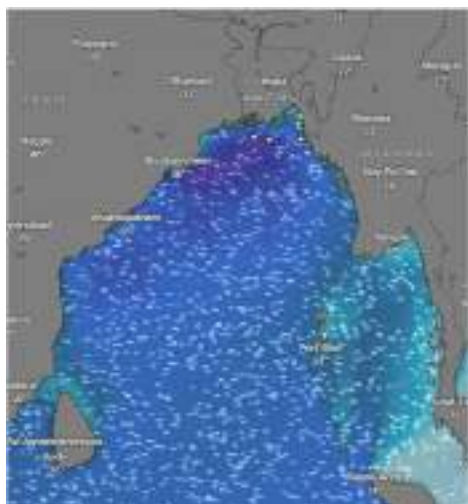
Date	Time	Air Temp (°C)		Sea Surface Temp (°C)	Baro Pressure (mbar)	Wind Direction	Wind Spd (kts)		Wave Ht (m)	Sea State	Humidity (%)	Prob of Rain (%)	Amount of Rain (mm)
		Max	Min				Gusting	Avg					
01-05-26 (Friday)	0001	32	26	28	1009	S	25	17	0.9	3	89	51	0.5
	0600			27	1010	S	20	14	0.9	3	91	36	0.3
	1200			30	1008	SSW	25	17	0.9	3	74	21	0.1
	1800			28	1006	W	17	13	0.9	3	88	42	0.4
02-05-26 (Saturday)	0001	32	26	28	1007	SSE	27	20	0.9	3	90	35	0.3
	0600			27	1008	S	26	18	0.9	3	92	28	0.1
	1200			30	1006	SSW	20	15	0.9	3	75	22	0.1
	1800			28	1005	SSE	25	17	0.9	3	87	46	0.5
03-05-26 (Sunday)	0001	32	26	28	1007	SSE	29	22	1.0	3	90	34	0.2
	0600			27	1008	SSE	28	21	1.0	3	92	24	0.1
	1200			30	1006	SSW	29	22	0.9	3	76	20	0.1
	1800			28	1005	SSE	27	19	0.8	3	87	30	0.2
04-05-26 (Monday)	0001	32	26	28	1007	SSE	27	17	0.8	3	91	35	0.2
	0600			27	1008	SE	26	17	0.8	3	90	26	0.1
	1200			30	1006	SSW	20	10	0.8	3	77	23	0.1
	1800			28	1005	SSE	26	21	0.7	3	89	31	0.2

01 May 2026

02 May 2026

03 May 2026

04 May 2026



Significant wave height (m)



MARINE WEATHER FORECAST (27 April to 04 May 2026)

ABEAM TO ELEPHANT POINT (21° 11' N, 091° 52' E)



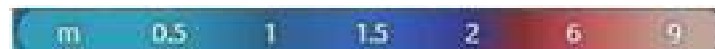
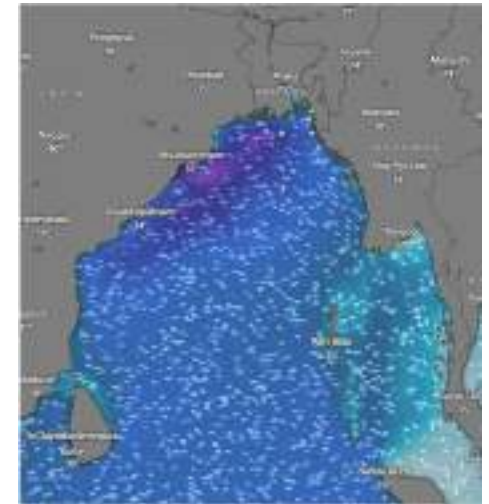
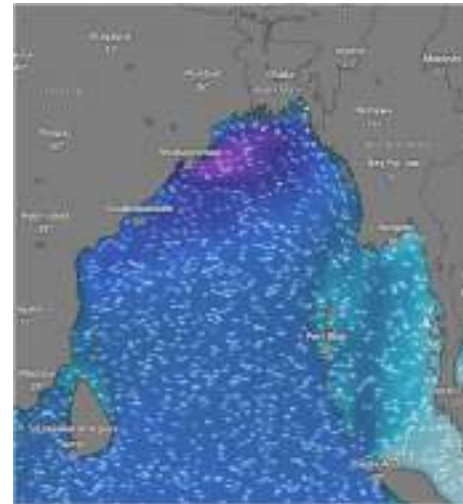
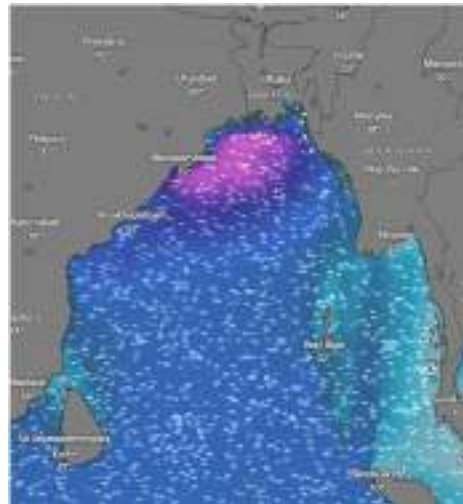
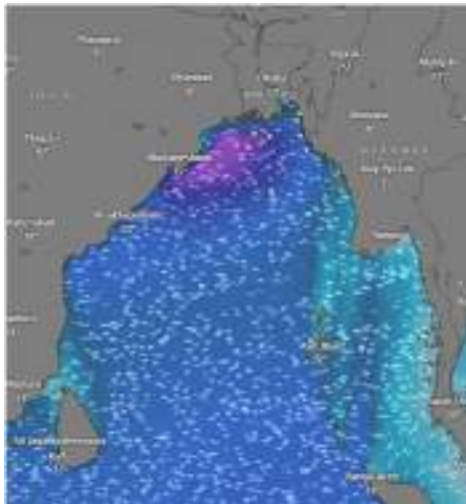
Date	Time	Air Temp (°C)		Sea Surface Temp (°C)	Baro Pressure (mbar)	Wind Direction	Wind Spd (kts)		Wave Ht (m)	Sea State	Humidity (%)	Prob of Rain (%)	Amount of Rain (mm)
		Max	Min				Gusting	Avg					
27-04-26 (Monday)	0001	32	26	28	1007	S	15	11	1.2	3	89	10	0.0
	0600			27	1008	S	17	13	1.4	4	90	12	0.0
	1200			30	1007	SSW	22	17	1.5	4	76	09	0.0
	1800			28	1006	SSW	21	16	1.7	4	88	15	0.0
28-04-26 (Tuesday)	0001	32	25	28	1007	SSW	21	16	1.8	4	90	32	0.2
	0600			27	1008	SSW	23	17	1.8	4	92	16	0.0
	1200			30	1006	SSW	24	17	1.8	4	75	22	0.1
	1800			28	1005	SSW	24	17	1.9	4	87	24	0.1
29-04-26 (Wednesday)	0001	32	25	28	1007	S	18	14	1.8	4	89	24	0.1
	0600			27	1008	SSW	22	16	1.7	4	91	15	0.0
	1200			30	1006	SSW	23	17	1.7	4	76	16	0.0
	1800			28	1005	SSE	16	12	1.6	4	85	22	0.1
30-04-26 (Thursday)	0001	32	26	28	1008	SSW	17	13	1.5	4	90	32	0.2
	0600			27	1009	SW	14	09	1.5	4	91	28	0.1
	1200			30	1007	SSW	15	10	1.5	4	77	22	0.1
	1800			28	1006	SW	16	11	1.5	4	88	45	0.5

27 Apr 2026

28 Apr 2026

29 Apr 2026

30 Apr 2026



Significant wave height (m)



MARINE WEATHER FORECAST (27 April to 04 May 2026)

ABEAM TO ELEPHANT POINT (21° 11' N, 091° 52' E)



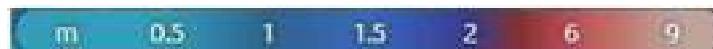
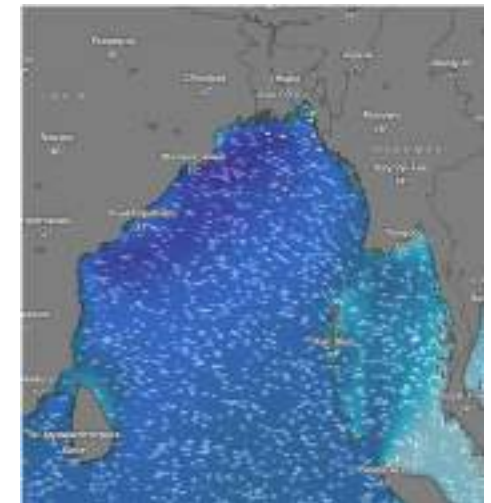
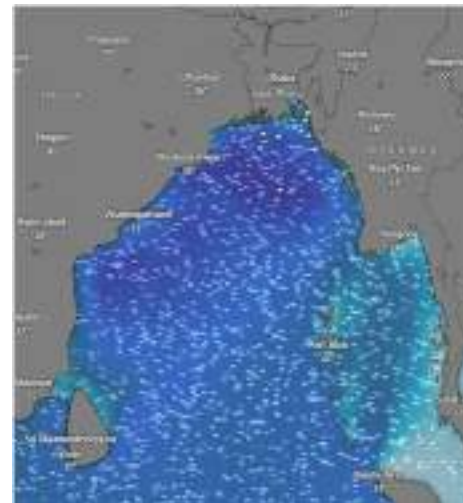
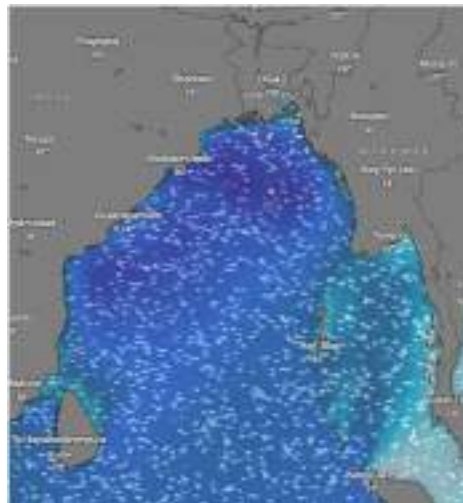
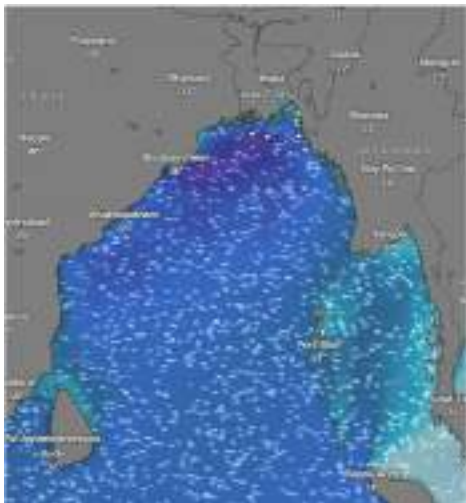
Date	Time	Air Temp (°C)		Sea Surface Temp (°C)	Baro Pressure (mbar)	Win Direction	Wind Spd (kts)		Wave Ht (m)	Sea State	Humidity (%)	Prob of Rain (%)	Amount of Rain (mm)
		Max	Min				Gusting	Avg					
01-05-26 (Friday)	0001	32	26	28	1009	S	17	13	1.6	4	90	51	0.5
	0600			27	1010	SSE	16	12	1.5	4	91	36	0.3
	1200			30	1008	SSW	20	14	1.6	4	76	21	0.1
	1800			28	1006	SE	16	12	1.5	4	85	42	0.4
02-05-26 (Saturday)	0001	32	26	28	1007	SSE	22	16	1.6	4	90	35	0.3
	0600			27	1008	SSE	21	15	1.6	4	91	28	0.1
	1200			30	1006	SW	17	13	1.6	4	75	22	0.1
	1800			28	1005	SSE	15	10	1.6	4	84	46	0.5
03-05-26 (Sunday)	0001	32	26	28	1007	SSE	26	18	1.7	4	90	34	0.2
	0600			27	1008	S	25	17	1.7	4	91	24	0.1
	1200			30	1006	S	26	18	1.6	4	76	20	0.1
	1800			28	1005	SE	16	12	1.6	4	87	30	0.2
04-05-26 (Monday)	0001	32	26	28	1007	SSE	27	18	1.6	4	88	31	0.2
	0600			27	1008	S	22	12	1.6	4	90	23	0.1
	1200			30	1006	S	21	13	1.6	4	78	22	0.1
	1800			28	1005	SE	25	16	1.5	4	84	32	0.2

01 May 2026

02 May 2026

03 May 2026

04 May 2026



Significant wave height (m)



MARINE WEATHER FORECAST (27 April to 04 May 2026)

ABEAM TO ST. MARTIN'S LIGHT HOUSE (20° 37' N, 092° 08' E)



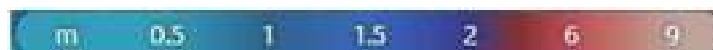
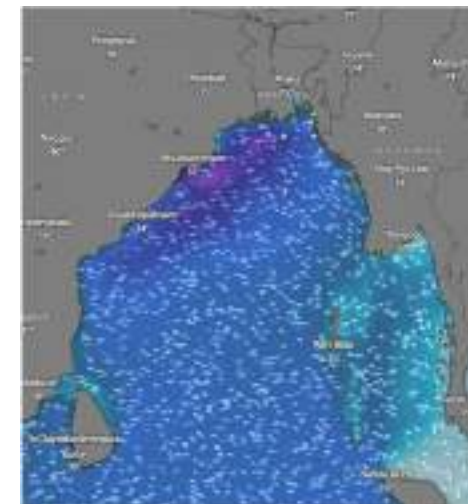
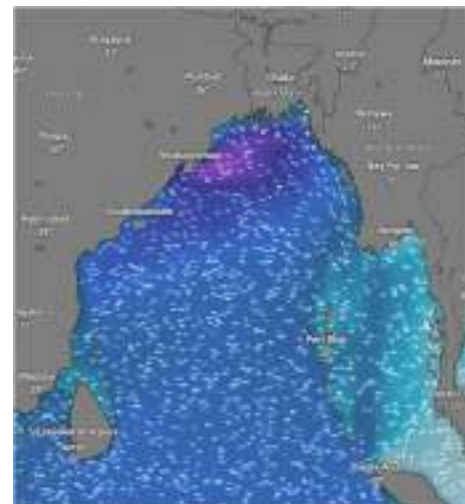
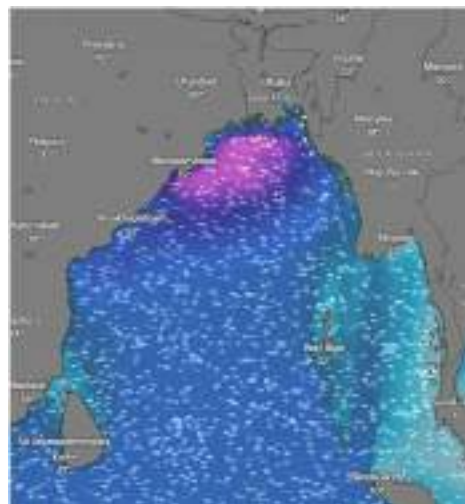
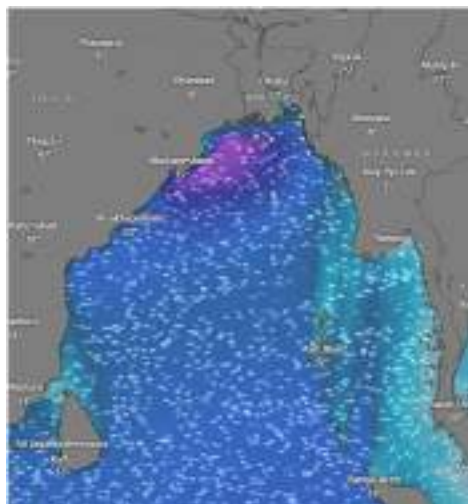
Date	Time	AirTemp (°C)		Sea Surface Temp (°C)	Baro Pressure (mbar)	Wind Direction	Wind Spd (kts)		Wave Ht (m)	Sea State	Humidity (%)	Prob of Rain (%)	Amount of Rain (mm)
		Max	Min				Gusting	Avg					
27-04-26 (Monday)	0001	32	26	28	1007	SSW	15	10	1.3	3	90	12	0.0
	0600			27	1008	S	16	12	1.4	4	92	33	0.2
	1200			30	1007	SSW	18	14	1.5	4	76	15	0.0
	1800			28	1006	SSW	20	15	1.7	4	87	37	0.2
28-04-26 (Tuesday)	0001	32	25	28	1007	SSW	18	14	1.7	4	90	24	0.1
	0600			27	1008	SSW	17	13	1.7	4	93	37	0.2
	1200			30	1006	SSW	18	14	1.8	4	75	24	0.1
	1800			28	1005	SSW	19	14	1.7	4	87	36	0.2
29-04-26 (Wednesday)	0001	32	25	28	1007	SSW	20	15	1.7	4	89	12	0.0
	0600			27	1008	SSW	18	14	1.6	4	91	16	0.0
	1200			30	1006	SSW	21	15	1.6	4	75	08	0.0
	1800			28	1005	SSW	17	13	1.6	4	86	32	0.2
30-04-26 (Thursday)	0001	32	26	28	1008	SSW	15	09	1.4	4	90	12	0.0
	0600			27	1009	SSW	16	10	1.4	4	89	15	0.0
	1200			30	1007	SSW	14	08	1.4	4	76	09	0.0
	1800			28	1006	SW	13	06	1.4	4	87	24	0.1

27 Apr 2026

28 Apr 2026

29 Apr 2026

30 Apr 2026



Significant wave height (m)



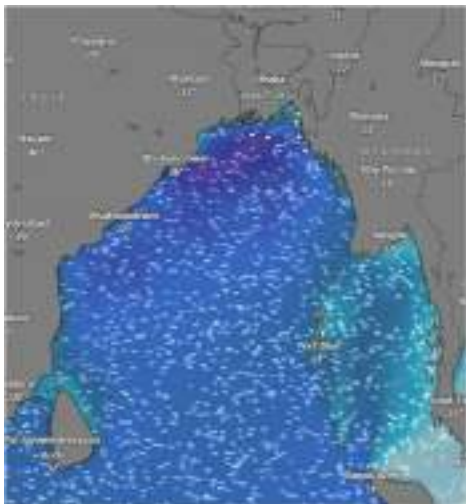
MARINE WEATHER FORECAST (27 April to 04 May 2026)

ABEAM TO ST. MARTIN'S LIGHT HOUSE (20° 37' N, 092° 08' E)

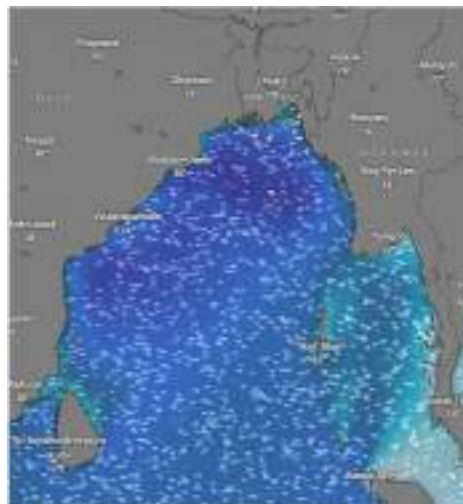


Date	Time	Air Temp (°C)		Sea Surface Temp (°C)	Baro Pressure (mbar)	Wind Direction	Wind Spd (kts)		Wave Ht (m)	Sea State	Humidity (%)	Prob of Rain (%)	Amount of Rain (mm)
		Max	Min				Gusting	Avg					
01-05-26 (Friday)	0001	32	26	28	1009	SSW	12	08	1.4	4	90	20	0.0
	0600			27	1010	SSE	14	10	1.4	4	89	24	0.1
	1200			30	1008	SSW	15	11	1.5	4	76	12	0.0
	1800			28	1006	SW	18	14	1.5	4	87	22	0.1
02-05-26 (Saturday)	0001	32	26	28	1007	S	26	17	1.6	4	90	35	0.3
	0600			27	1008	SSW	16	12	1.5	4	92	28	0.1
	1200			30	1006	S	17	13	1.6	4	75	22	0.1
	1800			28	1005	SSW	15	11	1.7	4	86	46	0.5
03-05-26 (Sunday)	0001	32	26	28	1007	SSW	12	07	1.6	4	90	34	0.2
	0600			27	1008	SSE	16	12	1.5	4	92	24	0.1
	1200			30	1006	S	18	14	1.6	4	75	20	0.1
	1800			28	1005	SE	14	10	1.7	4	86	30	0.2
04-05-26 (Monday)	0001	32	26	28	1007	SSW	24	13	1.7	4	88	32	0.2
	0600			27	1008	SSE	18	10	1.6	4	90	24	0.1
	1200			30	1006	S	18	11	1.6	4	76	30	0.2
	1800			28	1005	SE	30	14	1.4	4	85	20	0.1

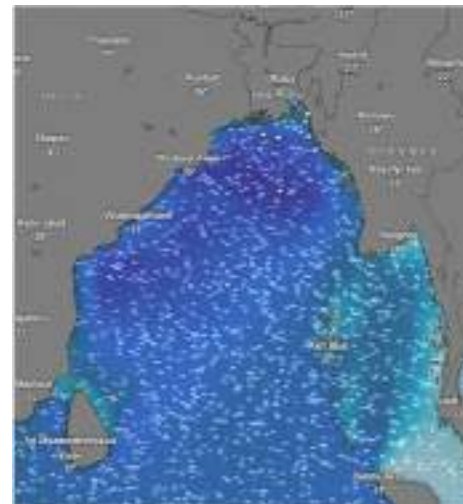
01 May 2026



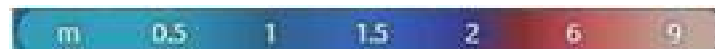
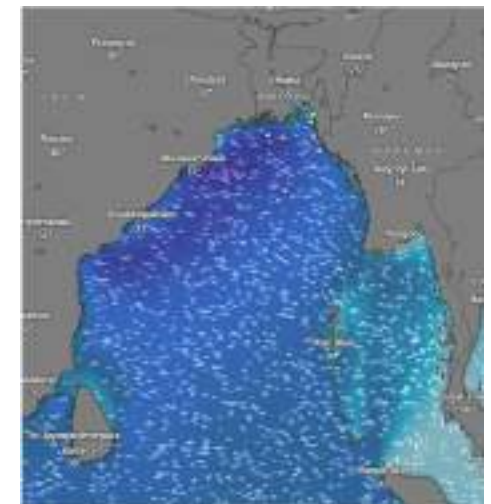
02 May 2026



03 May 2026



04 May 2026



Significant wave height (m)



MARINE WEATHER FORECAST (27 April to 04 May 2026)

PAYRA FAIRWAY (21° 22' N, 090° 6' E)



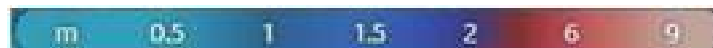
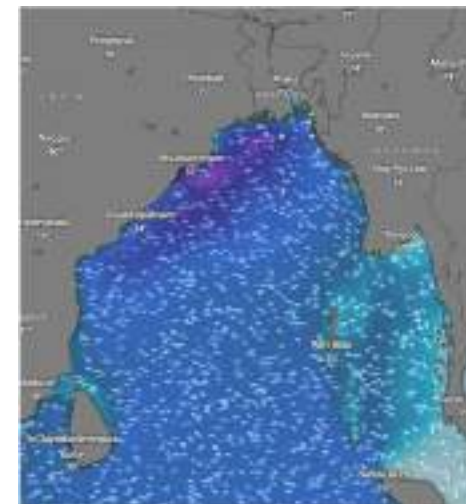
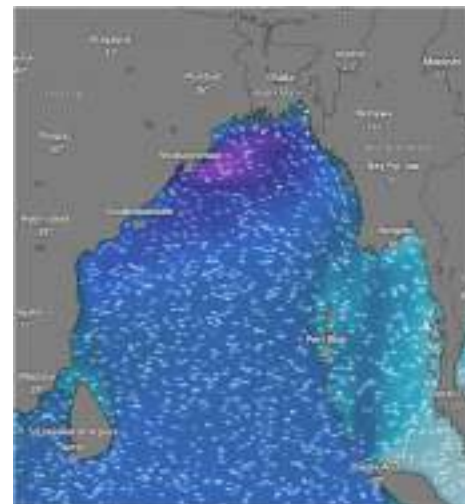
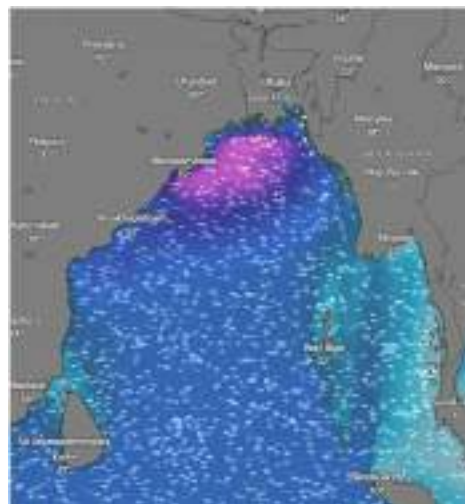
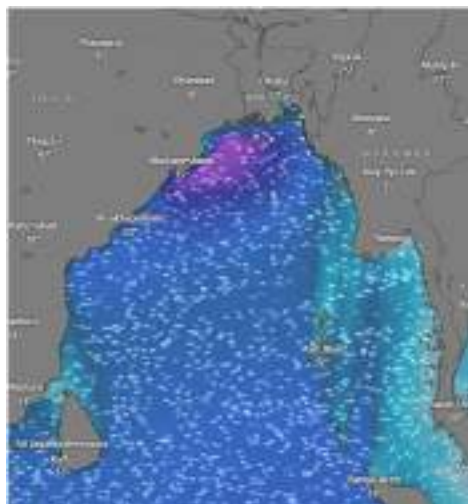
Date	Time	Air Temp (°C)		Sea Surface Temp (°C)	Baro Pressure (mbar)	Wind Direction	Wind Spd (kts)		Wave Ht (m)	Sea State	Humidity (%)	Prob of Rain (%)	Amount of Rain (mm)
		Max	Min				Gusting	Avg					
27-04-26 (Monday)	0001	32	26	28	1007	SSW	26	19	1.7	4	90	30	0.2
	0600			27	1008	SSW	25	17	2.0	4	92	24	0.1
	1200			30	1007	SSW	27	19	2.3	4	78	10	0.0
	1800			28	1006	SSW	28	20	2.5	5	87	16	0.0
28-04-26 (Tuesday)	0001	32	25	28	1007	SSW	29	22	2.3	4	90	41	0.4
	0600			27	1008	SSW	24	17	2.4	4	92	32	0.2
	1200			30	1006	SW	28	21	2.3	4	74	22	0.1
	1800			28	1005	SW	29	22	2.5	5	86	45	0.4
29-04-26 (Wednesday)	0001	32	25	28	1007	SSW	25	17	2.3	4	91	22	0.1
	0600			27	1008	SW	27	20	2.2	4	93	32	0.2
	1200			30	1006	SSW	26	18	2.1	4	75	15	0.0
	1800			28	1005	SSW	16	12	2.2	4	86	21	0.0
30-04-26 (Thursday)	0001	32	26	28	1008	SSW	26	19	2.1	4	89	23	0.1
	0600			27	1009	SSW	25	17	1.9	4	90	25	0.2
	1200			30	1007	SW	25	17	1.8	4	75	14	0.0
	1800			28	1006	SSW	26	21	1.7	4	86	19	0.0

27 Apr 2026

28 Apr 2026

29 Apr 2026

30 Apr 2026



Significant wave height (m)



MARINE WEATHER FORECAST (27 April to 04 May 2026)



PAYRA FAIRWAY (21° 22' N, 090° 6' E)

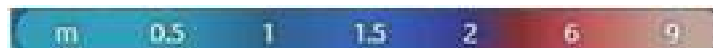
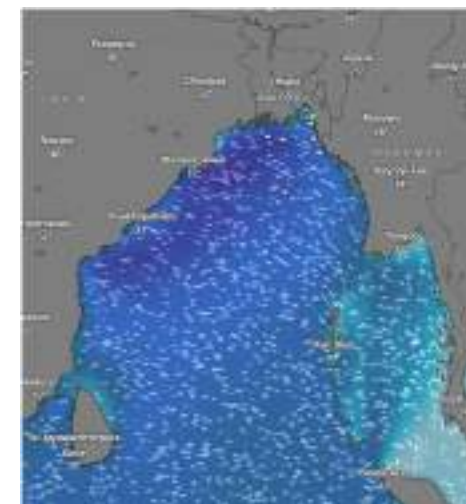
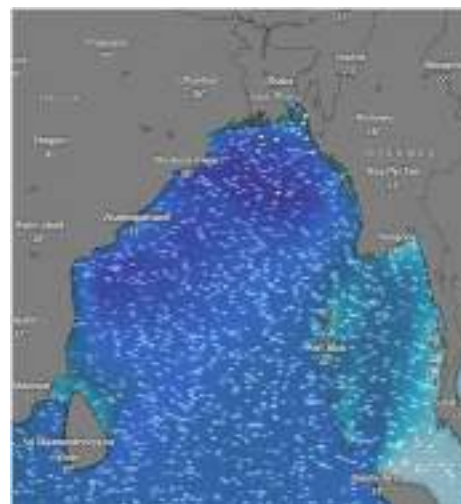
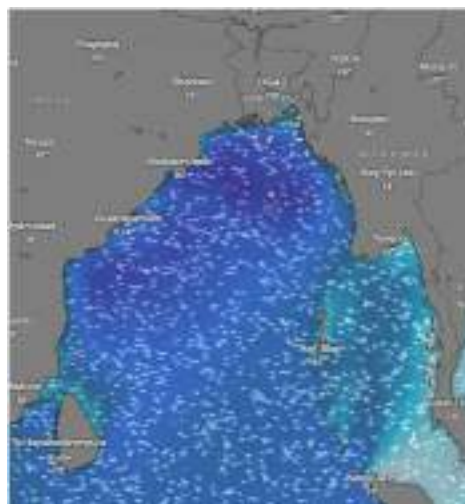
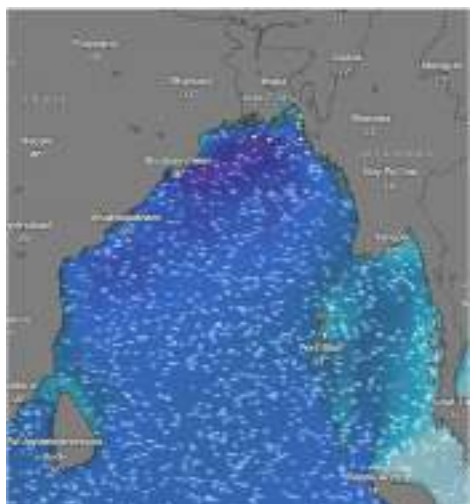
Date	Time	Air Temp (°C)		Sea Surface Temp (°C)	Baro Pressure (mbar)	Wind Direction	Wind Spd (kts)		Wae Ht (m)	Sea State	Humidity (%)	Prob of Rain (%)	Amount of Rain (mm)
		Max	Min				Gusting	Avg					
01-05-26 (Friday)	0001	32	26	28	1009	SSW	22	16	2.0	4	89	23	0.1
	0600			27	1010	SSW	21	15	2.0	4	90	25	0.2
	1200			30	1008	SW	26	18	2.0	4	75	14	0.0
	1800			28	1006	SW	26	19	2.0	4	86	36	0.3
02-05-26 (Saturday)	0001	32	26	28	1007	SE	14	10	2.0	4	90	33	0.2
	0600			27	1008	SSW	22	16	2.0	4	91	24	0.1
	1200			30	1006	SW	26	18	2.0	4	74	15	0.0
	1800			28	1005	SW	16	12	2.0	4	85	22	0.1
03-05-26 (Sunday)	0001	32	26	28	1007	SE	16	12	2.0	4	90	32	0.2
	0600			27	1008	SW	24	17	2.0	4	91	24	0.1
	1200			30	1006	SSW	25	17	2.0	4	74	15	0.0
	1800			28	1005	SSW	20	15	2.0	4	85	22	0.1
04-05-26 (Monday)	0001	32	26	28	1007	SE	28	21	2.0	4	87	30	0.2
	0600			27	1008	SW	28	19	2.0	4	90	26	0.1
	1200			30	1006	SSW	26	20	2.0	4	78	25	0.1
	1800			28	1005	SSW	27	15	1.8	4	85	29	0.2

01 May 2026

02 May 2026

03 May 2026

04 May 2026



Significant wave height (m)



MARINE WEATHER FORECAST (27 April to 04 May 2026)

MONGLA FAIRWAY (21° 26' N, 089° 34' E)



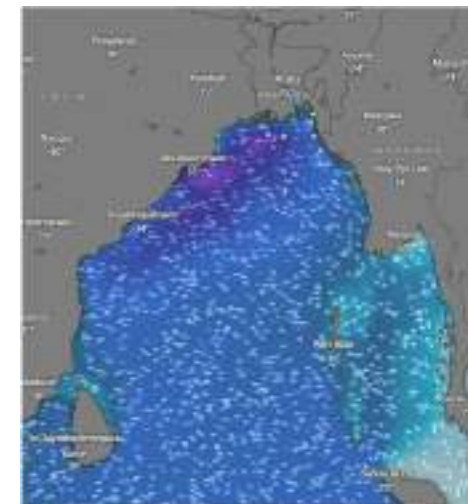
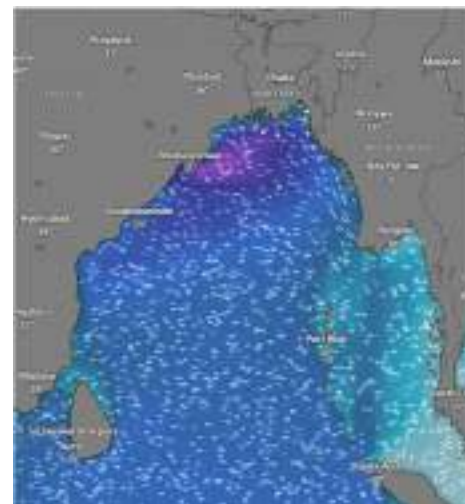
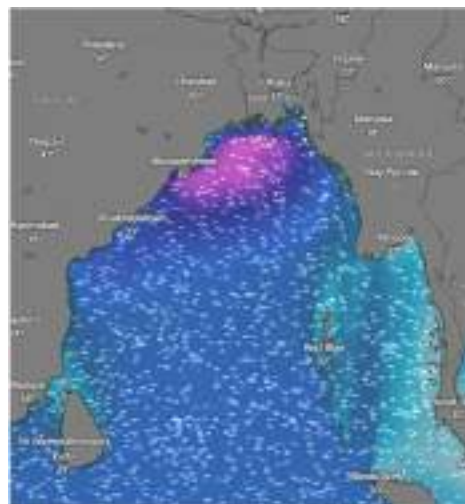
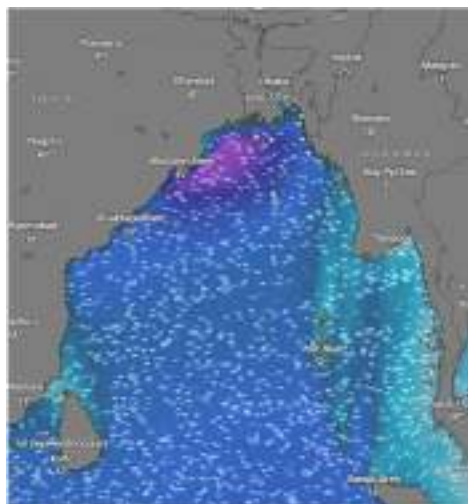
Date	Time	Air Temp (°C)		Sea Surface Temp (°C)	Baro Pressure (mbar)	Wind Direction	Wind Spd (kts)		Wave Ht (m)	Sea State	Humidity (%)	Prob of Rain (%)	Amount of Rain (mm)
		Max	Min				Gusting	Avg					
27-04-26 (Monday)	0001	32	26	28	1007	SSW	24	18	1.9	4	90	24	0.1
	0600			27	1008	SW	24	19	2.1	4	92	32	0.2
	1200			30	1007	SW	26	20	2.2	4	76	15	0.0
	1800			28	1006	SW	29	24	2.5	5	87	28	0.1
28-04-26 (Tuesday)	0001	32	25	28	1007	SSW	28	23	2.5	5	90	40	0.4
	0600			27	1008	SW	26	20	2.5	5	91	32	0.2
	1200			30	1006	SSW	27	20	2.4	4	75	23	0.1
	1800			28	1005	SW	28	23	2.6	5	88	27	0.2
29-04-26 (Wednesday)	0001	32	25	28	1007	SSW	27	20	2.4	4	91	16	0.0
	0600			27	1008	SW	26	18	2.3	4	93	24	0.1
	1200			30	1006	SSW	27	19	2.2	4	78	15	0.0
	1800			28	1005	SSW	26	21	2.2	4	86	30	0.1
30-04-26 (Thursday)	0001	32	26	28	1008	SSW	27	20	2.1	4	91	13	0.0
	0600			27	1009	SW	25	19	2.0	4	90	20	0.1
	1200			30	1007	SW	23	17	1.9	4	74	12	0.0
	1800			28	1006	SSW	22	14	1.8	4	82	26	0.1

27 Apr 2026

28 Apr 2026

29 Apr 2026

30 Apr 2026



Significant wave height (m)



MARINE WEATHER FORECAST (27 April to 04 May 2026)

MONGLA FAIRWAY (21° 26' N, 089° 34' E)



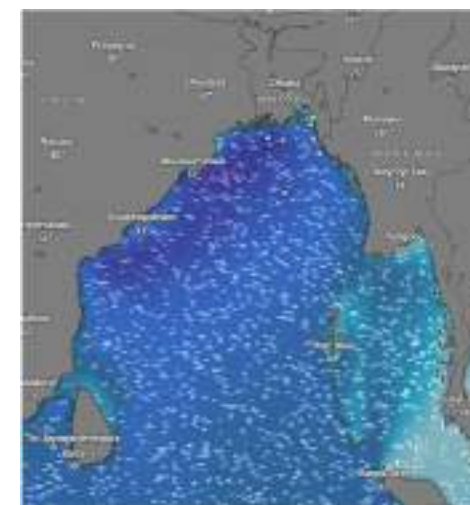
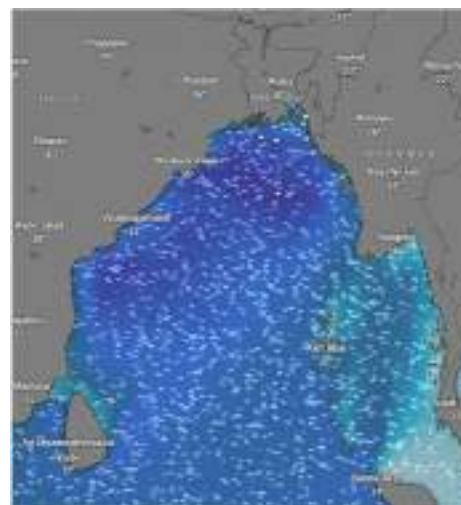
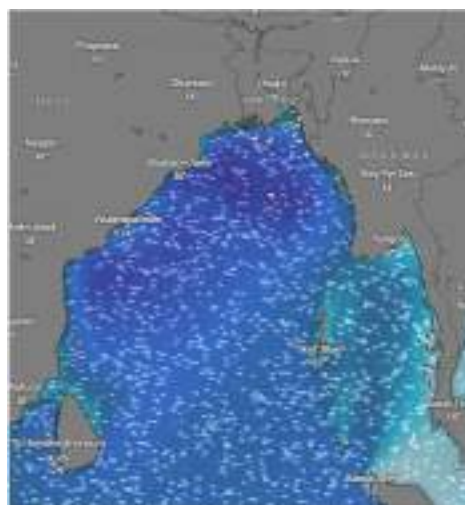
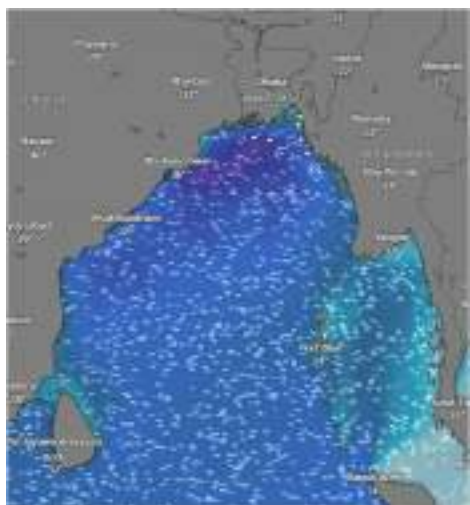
Date	Time	Air Temp (°C)		Sea Surface Temp (°C)	Baro Pressure (mbar)	Wind Direction	Wind Spd (kts)		Wave Ht (m)	Sea State	Humidity (%)	Prob of Rain (%)	Amount of Rain (mm)
		Max	Min				Gusting	Avg					
01-05-26 (Friday)	0001	32	26	28	1009	SSW	25	17	2.3	4	91	15	0.0
	0600			27	1010	SW	24	16	2.3	4	90	24	0.1
	1200			30	1008	SW	25	17	2.3	4	76	16	0.0
	1800			28	1006	SW	26	18	2.3	4	87	31	0.2
02-05-26 (Saturday)	0001	32	26	28	1007	SSW	13	09	2.3	4	91	30	0.2
	0600			27	1008	SW	18	14	2.3	4	90	24	0.1
	1200			30	1006	SW	26	18	2.3	4	74	15	0.0
	1800			28	1005	SSW	25	17	2.1	4	86	28	0.1
03-05-26 (Sunday)	0001	32	26	28	1007	SW	26	18	2.1	4	91	10	0.0
	0600			27	1008	SSW	25	17	2.2	4	93	22	0.1
	1200			30	1006	SSW	27	19	2.3	4	76	13	0.0
	1800			28	1005	SSW	28	20	2.1	4	85	32	0.2
04-05-26 (Monday)	0001	32	26	28	1007	SW	26	18	2.1	4	87	31	0.2
	0600			27	1008	SSW	25	17	2.2	4	91	30	0.2
	1200			30	1006	SSW	27	19	2.3	4	90	24	0.1
	1800			28	1005	SSW	28	20	2.1	4	77	25	0.1

01 May 2026

02 May 2026

03 May 2026

04 May 2026



Significant wave height (m)



MARINE WEATHER FORECAST (27 April to 04 May 2026)

OUTER EEZ (18° 48' N, 090° 30' E)



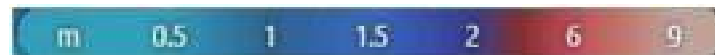
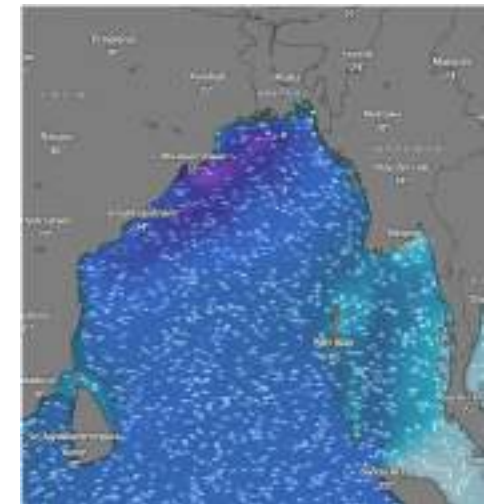
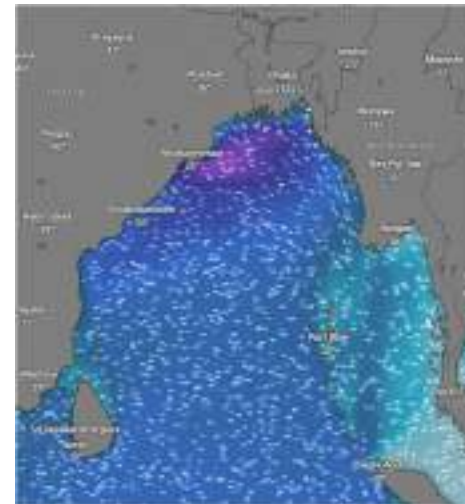
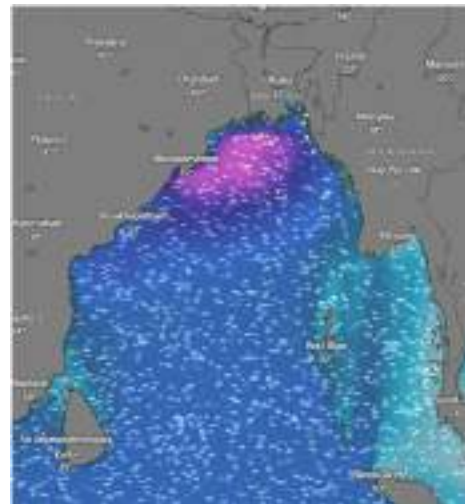
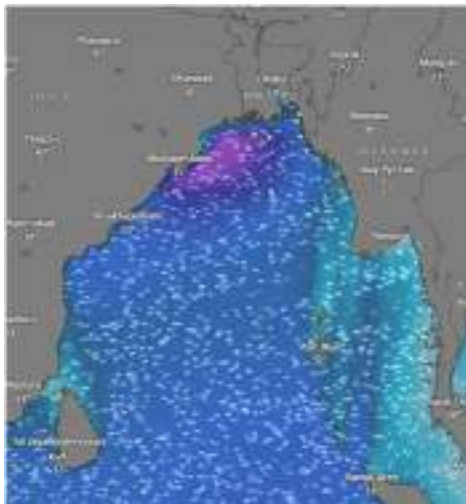
Date	Time	Air Temp (°C)		Sea Surface Temp (°C)	Baro Pressure (mbar)	Wind Direction	Wind Spd (kts)		Wave Ht (m)	Sea State	Humidity (%)	Prob of Rain (%)	Amount of Rain (mm)
		Max	Min				Gusting	Avg					
27-04-26 (Monday)	0001	31	25	28	1008	SW	16	12	1.5	4	90	32	0.2
	0600			27	1009	SSW	25	17	1.7	4	92	24	0.1
	1200			30	1007	SSW	18	14	1.7	4	77	15	0.0
	1800			28	1006	SW	26	18	1.8	4	88	22	0.1
28-04-26 (Tuesday)	0001	31	25	28	1007	SW	25	17	2.0	4	90	40	0.4
	0600			27	1008	SSW	26	18	2.1	4	93	32	0.2
	1200			30	1006	SSW	24	17	2.0	4	74	12	0.0
	1800			28	1005	SW	27	19	2.0	4	87	24	0.1
29-04-26 (Wednesday)	0001	31	25	28	1007	SW	25	17	2.0	4	90	12	0.0
	0600			27	1008	SSW	20	15	2.0	4	92	22	0.0
	1200			30	1006	SSW	17	13	1.9	4	76	09	0.0
	1800			28	1005	SSW	24	17	1.9	4	87	16	0.0
30-04-26 (Thursday)	0001	31	25	28	1008	SSW	20	13	1.8	4	88	13	0.0
	0600			27	1009	SSW	25	16	1.7	4	90	29	0.2
	1200			30	1007	SSW	22	15	1.6	4	76	16	0.0
	1800			28	1006	SW	19	11	1.7	4	87	23	0.1

27 Apr 2026

28 Apr 2026

29 Apr 2026

30 Apr 2026



Significant wave height (m)



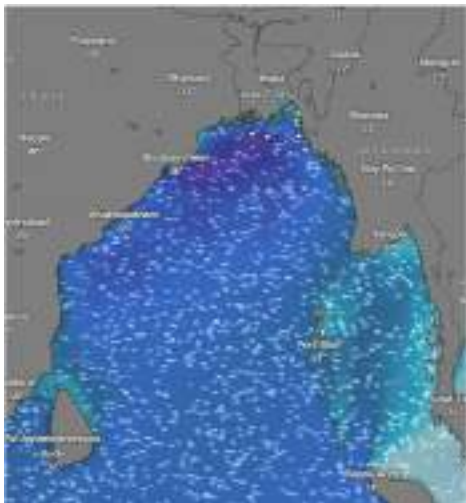
MARINE WEATHER FORECAST (27 April to 04 May 2026)

OUTER EEZ (18° 48' N, 090° 30' E)

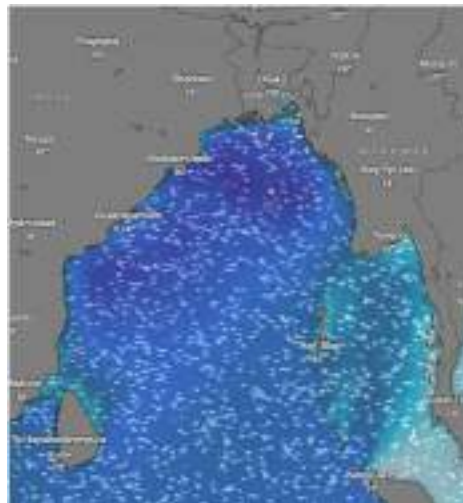


Date	Time	Air Temp (°C)		Sea Surface Temp (°C)	Baro Pressure (mbar)	Wind Direction	Wind Spd (kts)		Wave Ht (m)	Sea State	Humidity (%)	Prob of Rain (%)	Amount of Rain (mm)
		Max	Min				Gusting	Avg					
01-05-26 (Friday)	0001	31	25	28	1009	SW	15	11	1.6	4	89	20	0.0
	0600			27	1010	SSW	20	15	1.6	4	90	32	0.2
	1200			30	1008	SSW	24	16	1.8	4	76	15	0.0
	1800			28	1007	SSW	26	18	1.8	4	87	24	0.1
02-05-26 (Saturday)	0001	31	25	28	1007	SSW	17	13	1.8	4	90	24	0.1
	0600			27	1008	SSW	22	16	1.7	4	91	32	0.2
	1200			30	1006	SW	17	13	1.8	4	74	16	0.0
	1800			28	1005	SW	20	15	1.9	4	86	22	0.1
03-05-26 (Sunday)	0001	31	25	28	1007	SSW	25	17	1.9	4	90	32	0.2
	0600			27	1008	W	14	10	1.9	4	92	24	0.1
	1200			30	1006	SW	26	18	1.9	4	75	15	0.0
	1800			28	1005	SSW	25	17	1.8	4	87	26	0.1
04-05-26 (Monday)	0001	31	25	28	1007	SSW	17	08	1.8	4	89	32	0.2
	0600			27	1008	W	20	13	1.8	4	91	28	0.1
	1200			30	1006	SW	25	16	1.8	4	75	22	0.1
	1800			28	1005	SSW	23	15	1.7	4	87	25	0.1

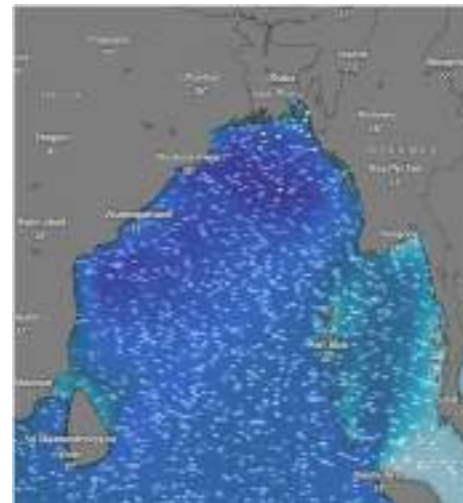
01 May 2026



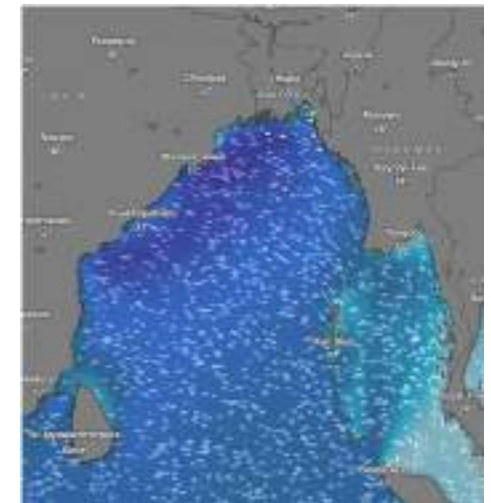
02 May 2026



03 May 2026



04 May 2026



Significant wave height (m)



PREDICTED SURFACE PRESSURE FORECAST (27 April to 03 May 2026)



27 Apr 2026



28 Apr 2026



29 Apr 2026



30 Apr 2026



01 May 2026



02 May 2026



03 May 2026

