



SUMMARY OF MARINE WEATHER FORECAST
COASTAL AREA OF BANGLADESH
DATE: 26 Nov to 03 Dec 2024



Fleet forecast	<p>The Depression over Southwest Bay of Bengal and adjoining area moved West-Northwestwards and low lies over Southwest Bay of Bengal and adjoining area (near Lat: 5.5°N & Long: 83.7°E)</p> <p>It is likely to move nearly northwestwards and intensify into a deep depression during next 12 hours. Thereafter, it is likely to move north-northwestwards towards Sri Lanka - Tamil Nadu coasts during subsequent 2 days.</p> <p>Maritime Ports of Chattogram, Cox's Bazar, Mongla & Payra have been advised to keep HOISTED DISTANT CAUTIONARY SIGNAL NO. ONE (R) ONE</p>
Wind direction, speed	North/north-easterly 12 kts, (Temporary gusting up to 26 kts).
Wave height & sea state	Wave height: 0.1 to 2.7 m (Sea state:1 to 5).
Sea surface temperature	20°C - 26°C (May remain nearly unchanged).
Baro pressure	1006-1014 mb
Rainfall	Light to moderate rain/thunder showers occur over Bay of Bengal & adjoining area.
Fog	Light to moderate fog may occur at places over the country during late night till early morning.

Outlook for 26 Nov to 03 Dec 2024: Weather may remain mainly dry with temporary partly cloudy sky.

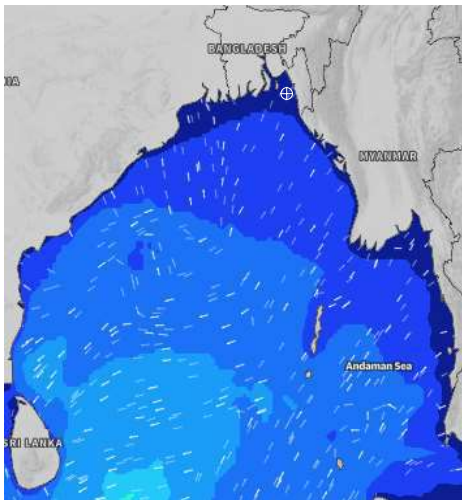


MARINE WEATHER FORECAST (26 Nov to 03 Dec 2024) NEAR AUTHORITY BUOY (22° 12' N, 091° 38' E)

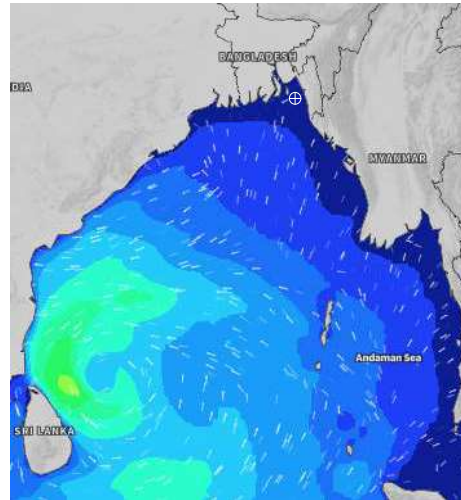


Date	Time	Air Temp (°C)		Sea Surface Temp (°C)	Baro Pressure (mbar)	Wind Direction	Wind Spd (kts)		Wave Ht (m)	Sea State	Humidity (%)	Prob of Rain
		Max	Min				Max	Avg				
26-11-24 (Tuesday)	0001	28	18	21	1013	NNE	9	8	0.1	1	82	12% (0.0 mm)
	0600			20	1013	NNE	9	8	0.1	1	87	11% (0.0 mm)
	1200			24	1013	NW	6	5	0.1	1	54	11% (0.0 mm)
	1800			24	1011	NW	7	6	0.1	1	65	10% (0.0 mm)
27-11-24 (Wednesday)	0001	28	20	21	1013	NE	7	6	0.1	1	82	10% (0.0 mm)
	0600			20	1012	NNE	8	7	0.1	1	86	12% (0.0 mm)
	1200			21	1012	N	4	3	0.1	1	52	10% (0.0 mm)
	1800			24	1011	NNW	6	5	0.1	1	63	10% (0.0 mm)
28-11-24 (Thursday)	0001	26	21	22	1011	NNE	6	5	0.1	1	80	10% (0.0 mm)
	0600			22	1012	ESE	7	6	0.1	1	84	11% (0.0 mm)
	1200			21	1013	NNE	8	7	0.1	1	51	10% (0.0 mm)
	1800			21	1012	NE	12	11	0.1	1	63	10% (0.0 mm)
29-11-24 (Friday)	0001	27	22	21	1012	NE	5	4	0.1	1	79	10% (0.0 mm)
	0600			20	1012	SE	8	7	0.1	1	85	11% (0.0 mm)
	1200			24	1012	NE	8	7	0.1	1	52	10% (0.0 mm)
	1800			24	1011	NE	9	8	0.1	1	64	10% (0.0 mm)

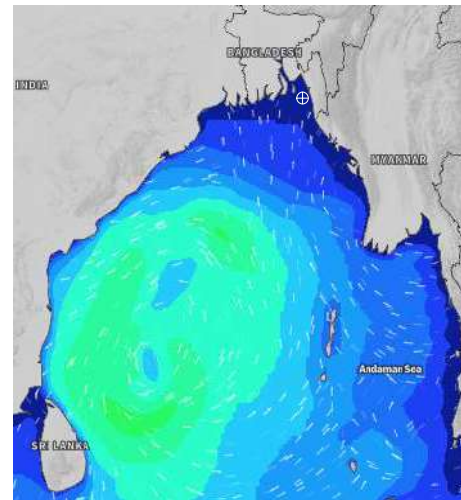
26 Nov 2024



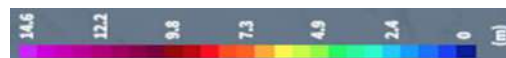
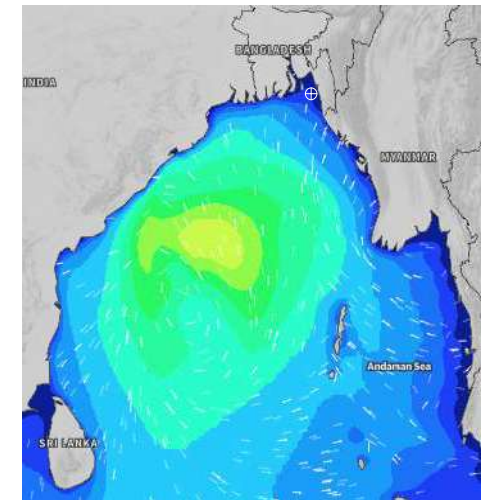
27 Nov 2024



28 Nov 2024



29 Nov 2024



Significant wave height (m)



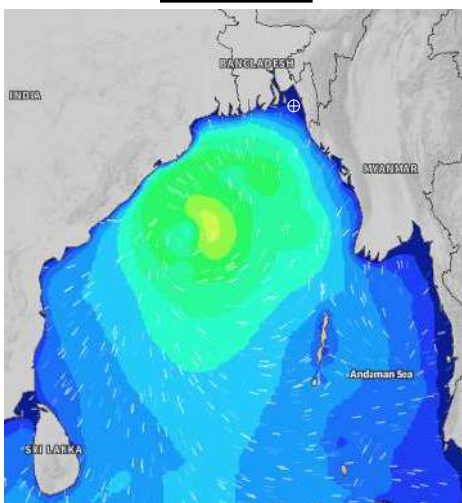
MARINE WEATHER FORECAST (26 Nov to 03 Dec 2024)

NEAR AUTHORITY BUOY (22° 12' N, 091° 38' E)

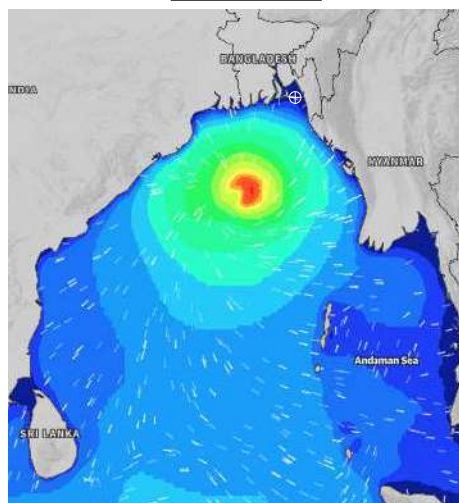


Date	Time	Air Temp (°C)		Sea Surface Temp (°C)	Baro Pressure (mbar)	Wind Direction	Wind Spd (kts)		Wave Ht (m)	Sea State	Humidity (%)	Prob of Rain
		Max	Min				Max	Avg				
30-11-24 (Saturday)	0001	28	22	23	1010	NE	12	10	0.2	2	83	10% (0.0 mm)
	0600			22	1009	ENE	6	5	0.1	1	87	10% (0.0 mm)
	1200			22	1009	E	6	5	0.1	1	62	10% (0.0 mm)
	1800			21	1009	E	5	4	0.1	1	72	13% (0.0 mm)
01-12-24 (Sunday)	0001	28	21	21	1010	ENE	8	7	0.1	1	81	24% (0.0 mm)
	0600			21	1009	NE	12	10	0.1	1	86	51% (0.3 mm)
	1200			23	1009	S	6	5	0.1	1	70	58% (0.5 mm)
	1800			23	1007	E	8	7	0.1	1	81	45% (0.3 mm)
02-12-24 (Monday)	0001	28	20	23	1010	E	6	5	0.1	1	90	50% (0.3 mm)
	0600			23	1009	E	12	11	0.1	1	89	56% (0.5 mm)
	1200			24	1009	ENE	17	13	0.3	1	72	44% (0.3 mm)
	1800			24	1009	ESE	16	12	0.3	1	80	24% (0.0 mm)
03-12-24 (Tuesday)	0001	28	19	23	1009	NE	12	9	0.3	2	91	48% (0.3 mm)
	0600			23	1008	NE	10	8	0.3	2	91	50% (0.3 mm)
	1200			24	1009	NE	8	7	0.2	2	70	42% (0.3 mm)
	1800			25	1008	N	7	6	0.1	1	81	40% (0.2 mm)

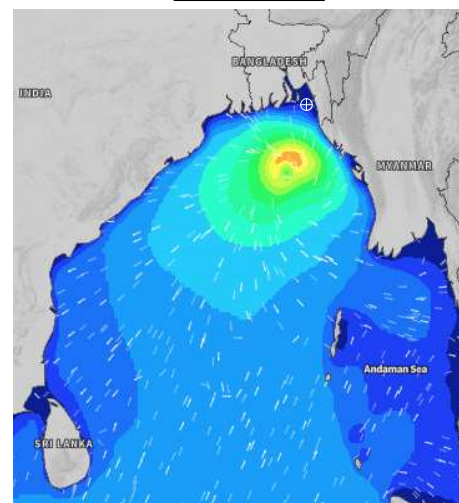
30 Nov 2024



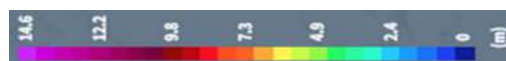
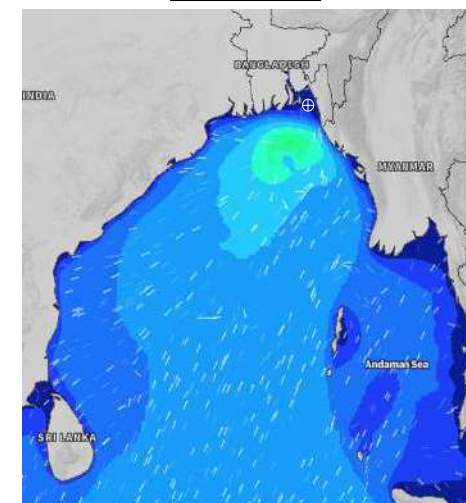
01 Dec 2024



02 Dec 2024



03 Dec 2024



Significant wave height (m)



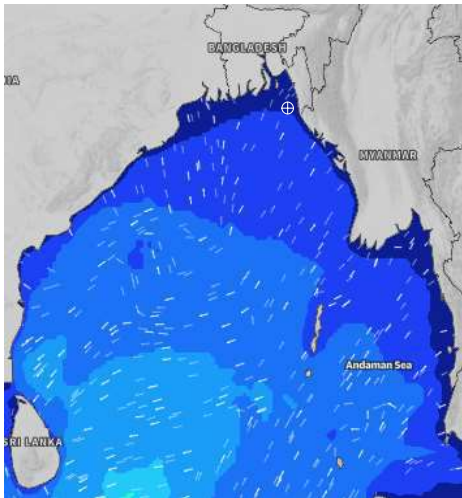
MARINE WEATHER FORECAST (26 Nov to 03 Dec 2024)

20 NM WEST OF ELEPHANT POINT (21° 10' N, 091° 42' E)

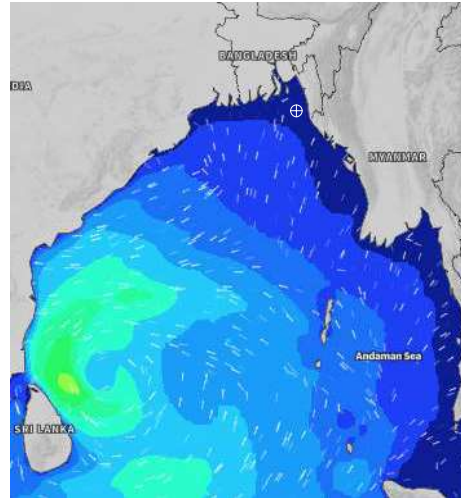


Date	Time	Air Temp (°C)		Sea Surface Temp (°C)	Baro Pressure (mbar)	Wind Direction	Wind Spd (kts)		Wave Ht (m)	Sea State	Humidity (%)	Prob of Rain
		Max	Min				Max	Avg				
26-11-24 (Tuesday)	0001	28	19	25	1013	NNE	11	10	0.5	2	85	10% (0.0 mm)
	0600			24	1013	NNE	12	11	0.5	2	87	11% (0.0 mm)
	1200			24	1013	NNE	11	10	0.6	3	52	10% (0.0 mm)
	1800			25	1011	NNE	12	11	0.5	2	67	10% (0.0 mm)
27-11-24 (Wednesday)	0001	29	21	25	1012	N	10	9	0.5	2	84	10% (0.0 mm)
	0600			23	1012	NNE	11	10	0.5	2	86	10% (0.0 mm)
	1200			24	1011	N	8	7	0.4	2	52	11% (0.0 mm)
	1800			25	1010	NNW	10	9	0.5	2	68	10% (0.0 mm)
28-11-24 (Thursday)	0001	27	23	26	1011	N	8	7	0.4	2	82	10% (0.0 mm)
	0600			22	1012	NE	8	7	0.4	2	84	10% (0.0 mm)
	1200			23	1012	NNE	8	7	0.4	2	52	10% (0.0 mm)
	1800			24	1012	NNE	11	10	0.4	2	69	11% (0.0 mm)
29-11-24 (Friday)	0001	28	23	24	1012	WSW	4	3	0.4	2	80	10% (0.0 mm)
	0600			22	1011	NE	12	11	0.4	2	84	10% (0.0 mm)
	1200			24	1011	N	12	11	0.5	2	52	10% (0.0 mm)
	1800			25	1010	NNE	12	11	0.5	2	71	11% (0.0 mm)

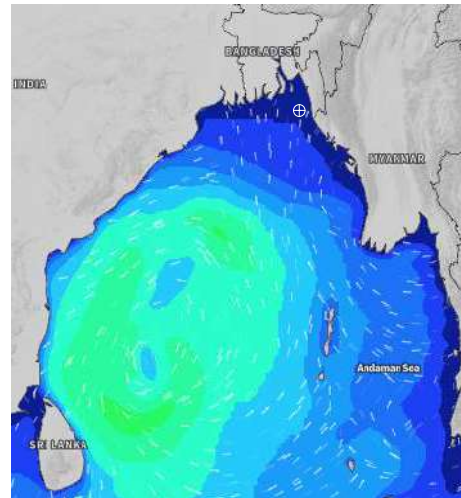
26 Nov 2024



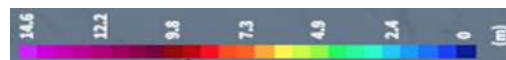
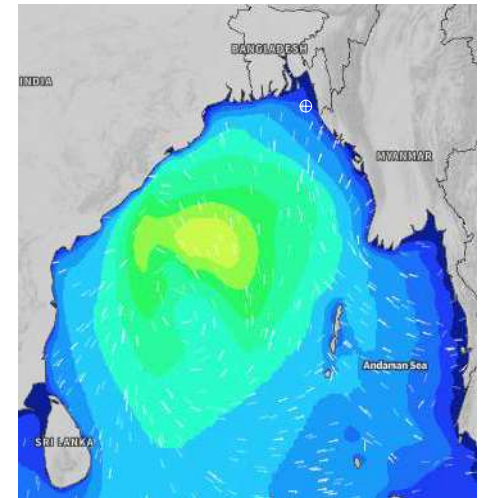
27 Nov 2024



28 Nov 2024



29 Nov 2024



Significant wave height (m)



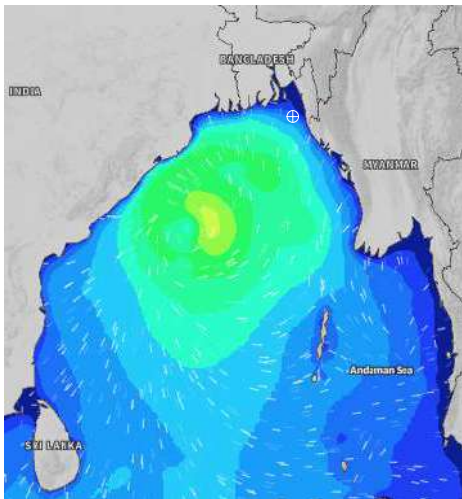
MARINE WEATHER FORECAST (26 Nov to 03 Dec 2024)

20 NM WEST OF ELEPHANT POINT (21° 10' N, 091° 42' E)

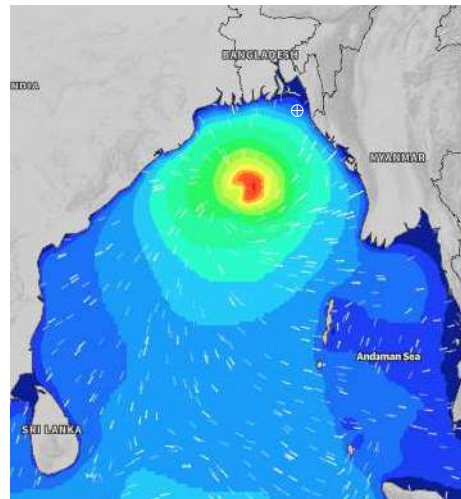


Date	Time	Air Temp (°C)		Sea Surface Temp (°C)	Baro Pressure (mbar)	Wind Direction	Wind Spd (kts)		Wave Ht (m)	Sea State	Humidity (%)	Prob of Rain
		Max	Min				Max	Avg				
30-11-24 (Saturday)	0001	29	23	25	1010	SE	16	14	1.6	4	80	12% (0.0 mm)
	0600			24	1009	ESE	15	13	1.6	4	81	10% (0.0 mm)
	1200			23	1009	ESE	23	19	1.8	4	55	11% (0.0 mm)
	1800			24	1008	ESE	26	18	2.0	4	73	12% (0.0 mm)
01-12-24 (Sunday)	0001	28	23	25	1009	SE	21	18	2.1	4	81	35% (0.0 mm)
	0600			25	1008	ESE	16	12	1.8	4	82	35% (0.2 mm)
	1200			26	1008	SE	14	12	1.7	4	70	34% (0.2 mm)
	1800			26	1007	SE	16	14	1.7	4	84	57% (0.5 mm)
02-12-24 (Monday)	0001	29	22	24	1009	SE	16	15	1.6	4	89	71% (0.5 mm)
	0600			24	1008	ESE	17	16	1.7	4	89	58% (0.5 mm)
	1200			24	1009	SE	21	20	1.8	4	74	48% (0.4 mm)
	1800			24	1008	ESE	19	17	1.8	4	79	35% (0.2 mm)
03-12-24 (Tuesday)	0001	28	21	25	1008	ESE	15	14	2.1	4	90	57% (0.2 mm)
	0600			25	1008	NE	15	14	2.0	4	90	43% (0.3 mm)
	1200			26	1009	ENE	21	20	2.4	4	72	35% (0.3 mm)
	1800			26	1008	N	18	17	1.9	4	82	37% (0.2 mm)

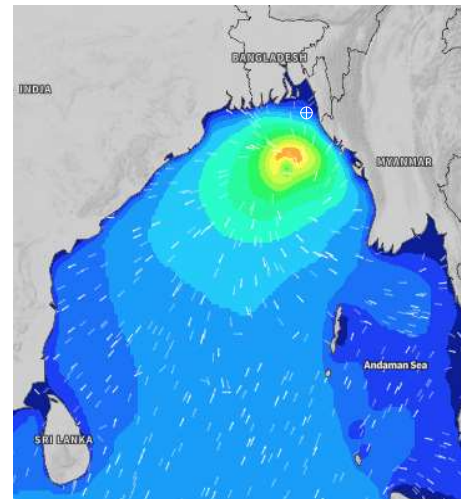
30 Nov 2024



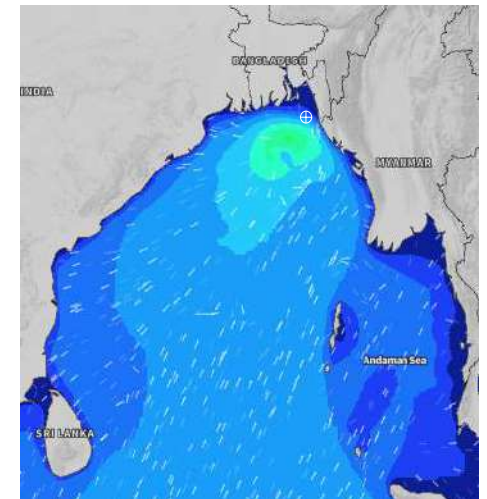
01 Dec 2024



02 Dec 2024



03 Dec 2024



Significant wave height (m)



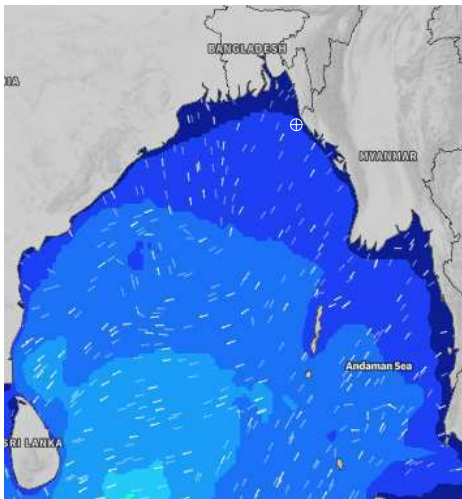
MARINE WEATHER FORECAST (26 Nov to 03 Dec 2024)

15 NM WEST OF ST. MARTIN'S LIGHT HOUSE (20° 37' N, 092° 03' E)

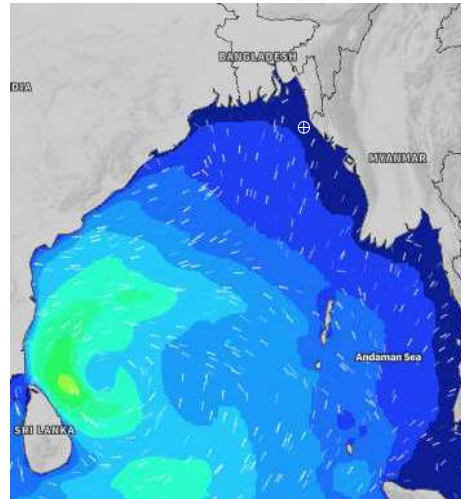


Date	Time	Air Temp (°C)		Sea Surface Temp (°C)	Baro Pressure (mbar)	Wind Direction	Wind Spd (kts)		Wave Ht (m)	Sea State	Humidity (%)	Prob of Rain
		Max	Min				Max	Avg				
26-11-24 (Tuesday)	0001	28	20	25	1013	NNW	10	10	0.7	3	81	10% (0.0 mm)
	0600			24	1012	N	14	14	0.7	3	82	10% (0.0 mm)
	1200			24	1014	N	9	9	0.7	3	54	11% (0.0 mm)
	1800			25	1010	NNW	11	10	0.7	3	66	10% (0.0 mm)
27-11-24 (Wednesday)	0001	29	22	26	1012	NNW	10	9	0.7	3	76	12% (0.0 mm)
	0600			25	1011	N	11	10	0.6	3	79	10% (0.0 mm)
	1200			25	1012	N	6	5	0.6	3	53	11% (0.0 mm)
	1800			26	1010	NNW	8	7	0.6	3	65	10% (0.0 mm)
28-11-24 (Thursday)	0001	27	23	26	1011	N	8	7	0.6	3	77	11% (0.0 mm)
	0600			25	1010	NNE	15	14	0.6	3	80	10% (0.0 mm)
	1200			25	1012	NNE	7	6	0.5	3	54	11% (0.0 mm)
	1800			25	1011	N	6	5	0.6	3	67	10% (0.0 mm)
29-11-24 (Friday)	0001	28	23	26	1012	NNW	7	6	0.5	2	79	11% (0.0 mm)
	0600			24	1010	NNE	14	13	0.6	3	80	10% (0.0 mm)
	1200			25	1012	NNE	9	8	0.6	3	54	11% (0.0 mm)
	1800			26	1012	SE	11	10	0.7	3	68	10% (0.0 mm)

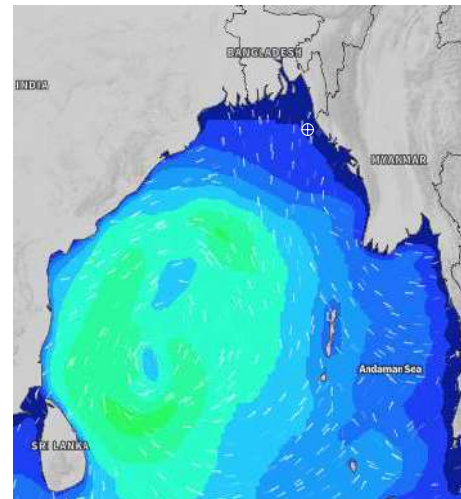
26 Nov 2024



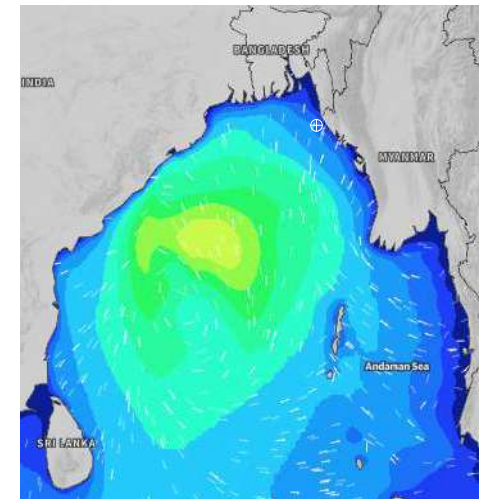
27 Nov 2024



28 Nov 2024



29 Nov 2024



Significant wave height (m)



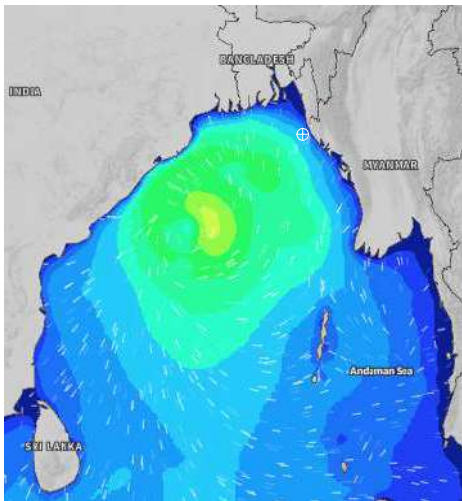
MARINE WEATHER FORECAST (26 Nov to 03 Dec 2024)

15 NM WEST OF ST. MARTIN'S LIGHT HOUSE (20° 37' N, 092° 03' E)

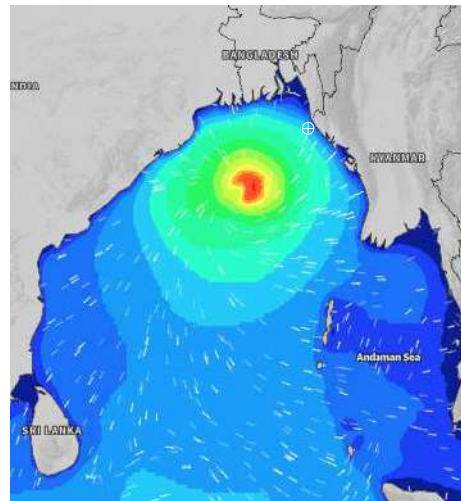


Date	Time	Air Temp (°C)		Sea Surface Temp (°C)	Baro Pressure (mbar)	Wind Direction	Wind Spd (kts)		Wave Ht (m)	Sea State	Humidity (%)	Prob of Rain
		Max	Min				Max	Avg				
30-11-24 (Saturday)	0001	29	24	23	1010	E	15	14	2.0	4	77	10% (0.0 mm)
	0600			23	1008	ENE	18	17	2.0	4	76	11% (0.0 mm)
	1200			23	1009	ENE	22	19	2.3	4	58	10% (0.0 mm)
	1800			23	1007	E	24	20	2.5	4	72	11% (0.0 mm)
01-12-24 (Sunday)	0001	29	23	23	1009	E	24	21	2.6	5	78	24% (0.0 mm)
	0600			23	1007	E	20	18	2.5	4	77	33% (0.2 mm)
	1200			24	1009	ESE	20	18	2.4	4	73	52% (0.4 mm)
	1800			24	1006	ESE	18	15	2.3	4	81	51% (0.5 mm)
02-12-24 (Monday)	0001	29	23	24	1008	E	18	16	2.4	4	86	65% (0.5 mm)
	0600			24	1006	E	17	16	2.4	4	85	64% (0.5 mm)
	1200			24	1010	E	16	15	2.3	4	76	64% (1.5 mm)
	1800			24	1007	ESE	16	14	2.4	4	71	52% (0.5 mm)
03-12-24 (Tuesday)	0001	29	22	25	1009	ESE	18	16	2.1	4	86	55% (0.4 mm)
	0600			25	1006	E	22	18	2.4	4	86	51% (0.5 mm)
	1200			24	1010	E	18	17	2.5	4	73	32% (0.2 mm)
	1800			25	1006	ENE	14	13	2.3	4	78	28% (0.1 mm)

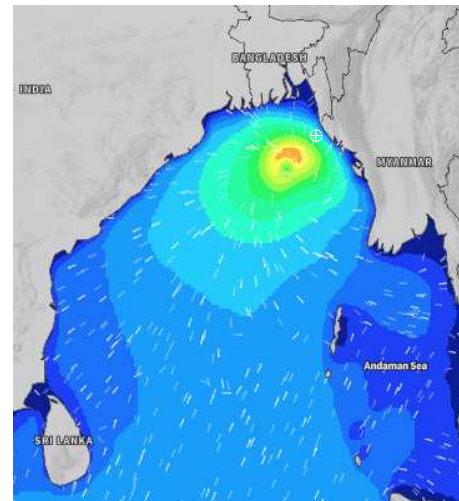
30 Nov 2024



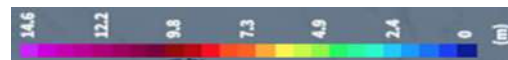
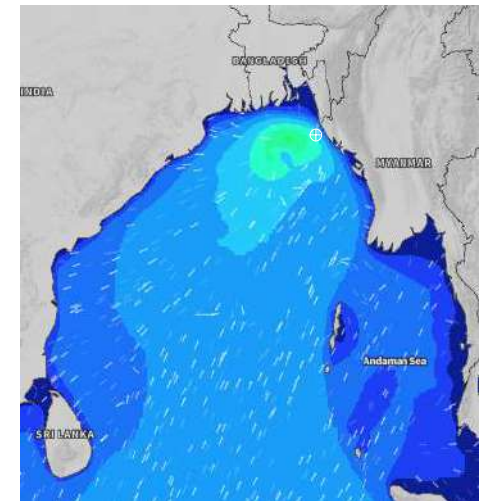
01 Dec 2024



02 Dec 2024



03 Dec 2024



Significant wave height (m)



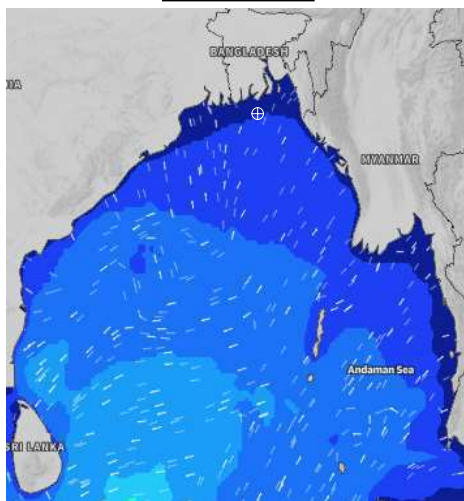
MARINE WEATHER FORECAST (26 Nov to 03 Dec 2024)

40 NM EAST OF PAYRA FAIRWAY (21° 07' N, 090° 45' E)

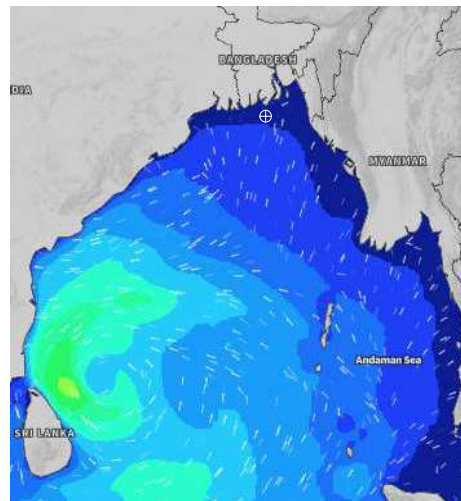


Date	Time	Air Temp (°C)		Sea Surface Temp (°C)	Baro Pressure (mbar)	Wind Direction	Wind Spd (kts)		Wave Ht (m)	Sea State	Humidity (%)	Prob of Rain
		Max	Min				Max	Avg				
26-11-24 (Tuesday)	0001	27	18	25	1013	N	12	11	0.6	3	80	11% (0.0 mm)
	0600			24	1013	NE	14	13	0.7	3	83	10% (0.0 mm)
	1200			24	1013	N	10	9	0.7	3	55	11% (0.0 mm)
	1800			24	1011	N	10	9	0.6	3	69	10% (0.0 mm)
27-11-24 (Wednesday)	0001	28	19	25	1012	NNW	12	11	0.6	3	84	11% (0.0 mm)
	0600			24	1012	NNE	12	11	0.7	3	84	10% (0.0 mm)
	1200			24	1012	N	10	9	0.6	3	51	11% (0.0 mm)
	1800			25	1011	N	8	7	0.6	3	67	10% (0.0 mm)
28-11-24 (Thursday)	0001	26	21	25	1011	NNE	8	7	0.5	2	83	11% (0.0 mm)
	0600			25	1011	NNE	13	12	0.6	3	83	15% (0.0 mm)
	1200			24	1012	NNE	9	8	0.6	3	52	12% (0.0 mm)
	1800			24	1012	NE	14	13	0.8	3	68	10% (0.0 mm)
29-11-24 (Friday)	0001	27	22	22	1012	SE	5	4	0.5	2	81	11% (0.0 mm)
	0600			21	1011	NNE	11	10	0.5	2	84	12% (0.0 mm)
	1200			23	1012	NNE	11	10	0.6	3	54	12% (0.0 mm)
	1800			24	1011	NE	12	11	0.8	3	65	10% (0.0 mm)

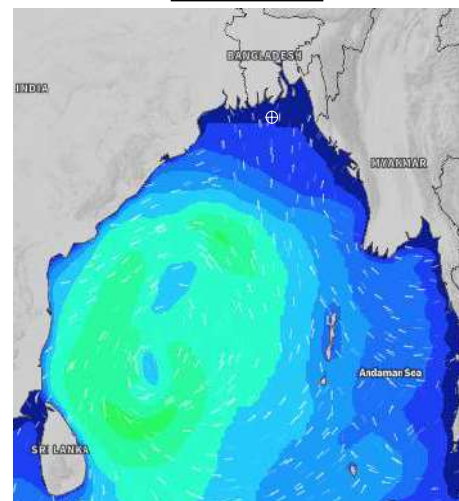
26 Nov 2024



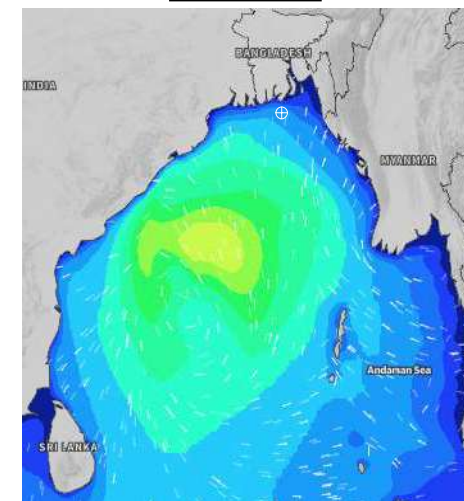
27 Nov 2024



28 Nov 2024



29 Nov 2024



Significant wave height (m)



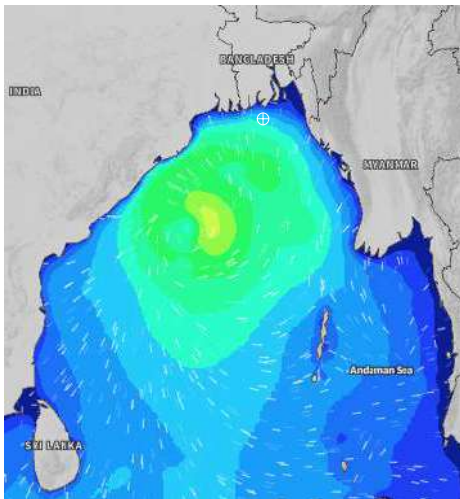
MARINE WEATHER FORECAST (26 Nov to 03 Dec 2024)

40 NM EAST OF PAYRA FAIRWAY (21° 07' N, 090° 45' E)

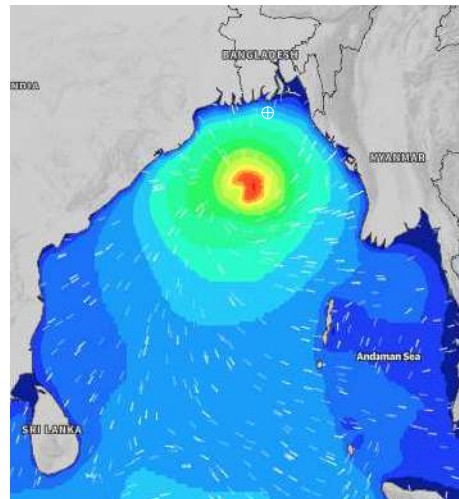


Date	Time	Air Temp (°C)		Sea Surface Temp (°C)	Baro Pressure (mbar)	Wind Direction	Wind Spd (kts)		Wave Ht (m)	Sea State	Humidity (%)	Prob of Rain
		Max	Min				Max	Avg				
30-11-24 (Saturday)	0001	27	22	24	1009	ESE	18	16	2.5	4	81	12% (0.0 mm)
	0600			24	1008	ENE	18	17	2.5	4	81	10% (0.0 mm)
	1200			24	1008	E	22	20	2.6	5	53	11% (0.0 mm)
	1800			24	1007	ENE	20	18	2.7	5	68	12% (0.0 mm)
01-12-24 (Sunday)	0001	27	22	25	1008	E	21	20	2.7	5	79	34% (0.2 mm)
	0600			24	1007	ENE	18	16	2.7	5	82	44% (0.4 mm)
	1200			24	1008	E	17	16	2.6	5	66	32% (0.2 mm)
	1800			25	1006	E	18	17	2.7	5	79	32% (0.2 mm)
02-12-24 (Monday)	0001	27	21	25	1007	ESE	18	17	2.6	5	88	56% (0.4 mm)
	0600			25	1007	ESE	20	18	2.7	5	89	66% (0.5 mm)
	1200			25	1009	SE	18	16	2.6	5	70	57% (0.9 mm)
	1800			25	1008	ESE	16	15	2.6	5	81	51% (0.4 mm)
03-12-24 (Tuesday)	0001	27	20	25	1006	E	20	19	2.6	5	90	57% (0.9 mm)
	0600			25	1007	NE	23	20	2.6	5	90	51% (0.4 mm)
	1200			25	1008	NNE	24	22	2.6	5	70	32% (0.2 mm)
	1800			25	1007	N	20	19	2.6	5	79	49% (0.4 mm)

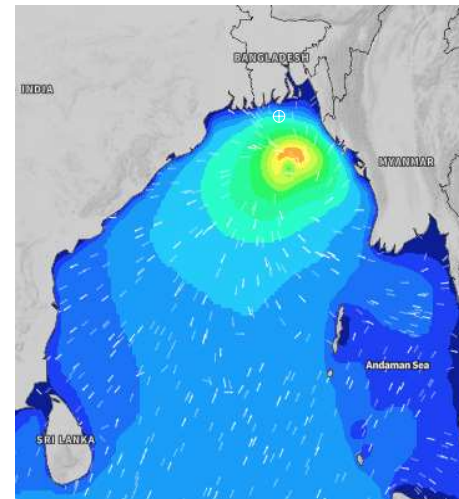
30 Nov 2024



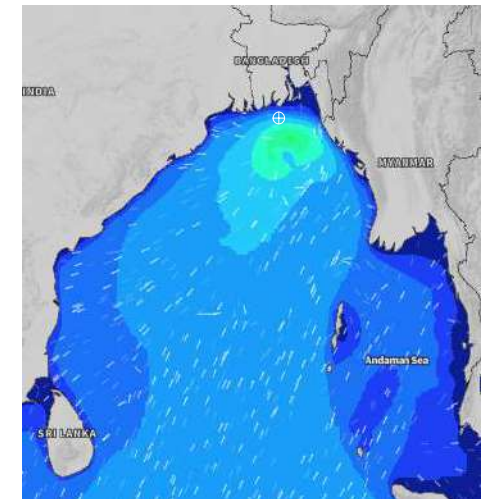
01 Dec 2024



02 Dec 2024



03 Dec 2024



Significant wave height (m)



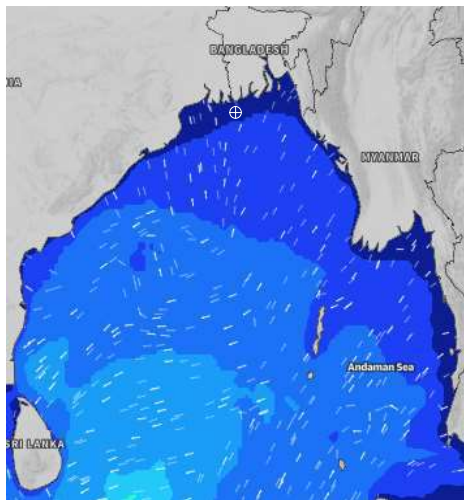
MARINE WEATHER FORECAST (26 Nov to 03 Dec 2024)

10 NM SOUTH OF MONGLA FAIRWAY (21° 16' N, 089° 34' E)

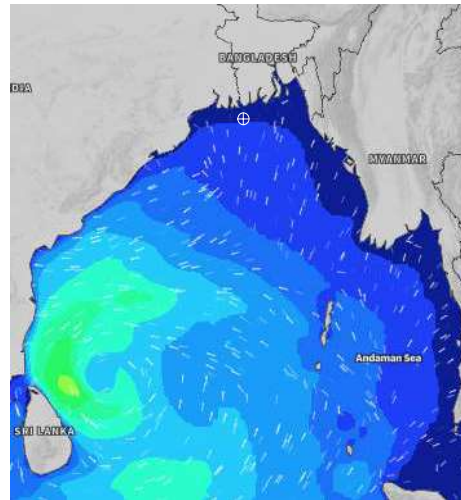


Date	Time	Air Temp (°C)		Sea Surface Temp (°C)	Baro Pressure (mbar)	Wind Direction	Wind Spd (kts)		Wave Ht (m)	Sea State	Humidity (%)	Prob of Rain
		Max	Min				Max	Avg				
26-11-24 (Tuesday)	0001	28	17	25	1014	NNE	8	7	0.5	2	87	10% (0.0 mm)
	0600			23	1013	NNE	13	12	0.6	3	91	11% (0.0 mm)
	1200			23	1014	NNE	10	9	0.6	3	50	11% (0.0 mm)
	1800			25	1011	N	4	3	0.5	2	64	12% (0.0 mm)
27-11-24 (Wednesday)	0001	28	18	25	1013	N	9	8	0.5	2	85	11% (0.0 mm)
	0600			24	1012	NNE	14	12	0.6	3	90	12% (0.0 mm)
	1200			23	1012	NNE	10	9	0.6	3	47	10% (0.0 mm)
	1800			25	1011	NNE	9	8	0.5	2	65	12% (0.0 mm)
28-11-24 (Thursday)	0001	27	20	25	1011	NNE	8	7	0.5	2	86	11% (0.0 mm)
	0600			24	1011	NNE	9	8	0.5	2	91	12% (0.0 mm)
	1200			22	1013	NNE	11	10	0.6	3	48	10% (0.0 mm)
	1800			22	1012	NE	13	2	0.8	3	65	12% (0.0 mm)
29-11-24 (Friday)	0001	27	21	25	1012	E	4	3	0.5	2	84	11% (0.0 mm)
	0600			25	1011	NE	8	7	0.5	2	90	12% (0.0 mm)
	1200			23	1012	ENE	11	10	0.6	3	49	10% (0.0 mm)
	1800			22	1011	NE	11	10	0.7	3	65	10% (0.0 mm)

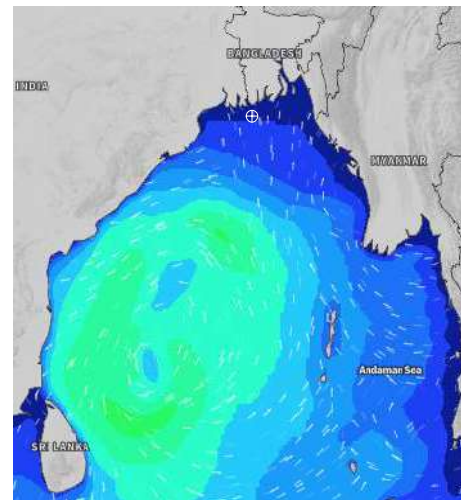
26 Nov 2024



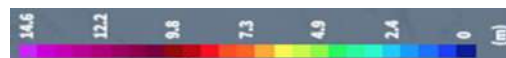
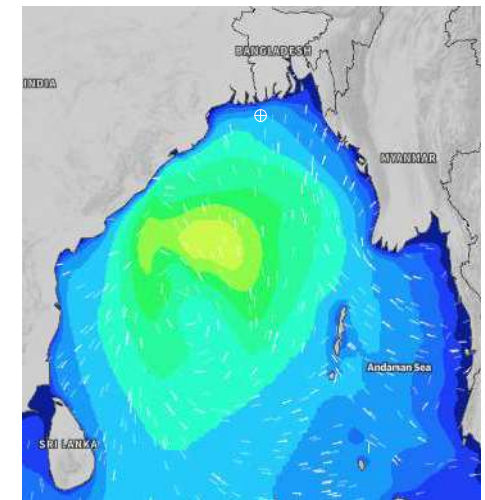
27 Nov 2024



28 Nov 2024



29 Nov 2024



Significant wave height (m)



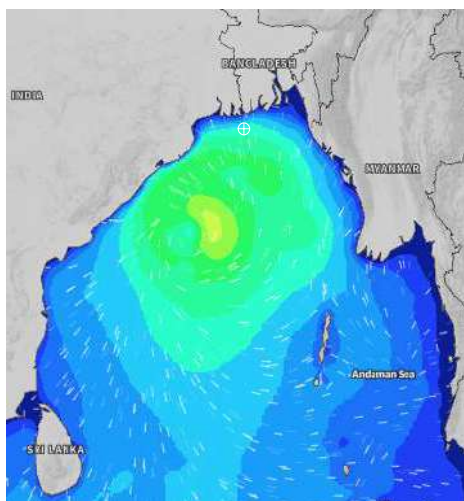
MARINE WEATHER FORECAST (26 Nov to 03 Dec 2024)

10 NM SOUTH OF MONGLA FAIRWAY (21° 16' N, 089° 34' E)

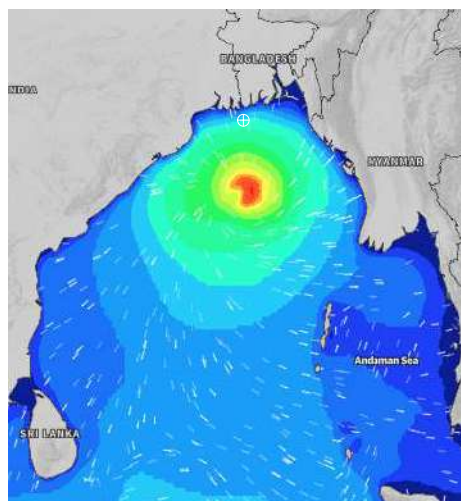


Date	Time	Air Temp (°C)		Sea Surface Temp (°C)	Baro Pressure (mbar)	Wind Direction	Wind Spd (kts)		Wave Ht (m)	Sea State	Humidity (%)	Prob of Rain
		Max	Min				Max	Avg				
30-11-24 (Saturday)	0001	27	21	25	1009	E	18	16	2.6	5	83	11% (0.0 mm)
	0600			25	1008	ENE	21	20	2.6	5	89	11% (0.0 mm)
	1200			24	1009	ENE	19	18	2.7	5	51	12% (0.0 mm)
	1800			24	1008	ENE	20	19	2.7	5	65	10% (0.0 mm)
01-12-24 (Sunday)	0001	27	20	24	1009	NE	17	15	2.6	5	82	24% (0.0 mm)
	0600			24	1008	ENE	20	18	2.6	5	87	30% (0.2 mm)
	1200			24	1008	ENE	18	16	2.6	5	51	32% (0.2 mm)
	1800			24	1007	ENE	16	15	2.6	5	76	24% (0.0 mm)
02-12-24 (Monday)	0001	27	19	25	1007	ENE	17	16	2.7	5	89	32% (0.2 mm)
	0600			24	1006	E	24	22	2.7	5	92	34% (0.2 mm)
	1200			24	1007	E	24	22	2.7	5	65	31% (0.1 mm)
	1800			24	1006	E	24	22	2.7	5	67	24% (0.0 mm)
03-12-24 (Tuesday)	0001	28	19	25	1006	ENE	17	16	2.5	4	91	41% (0.4 mm)
	0600			25	1006	NNE	19	18	2.5	4	92	49% (0.4 mm)
	1200			24	1007	N	17	16	2.4	4	67	38% (0.2 mm)
	1800			26	1006	NNW	13	12	1.8	4	76	45% (0.3 mm)

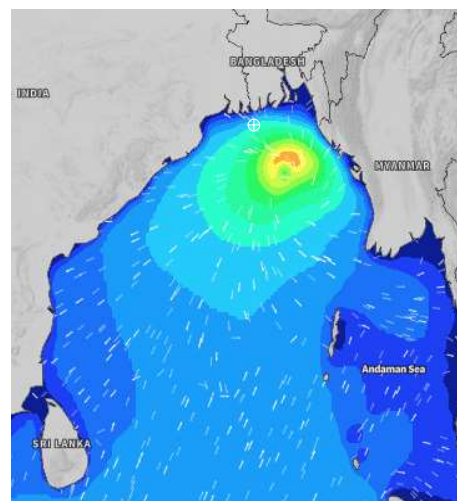
30 Nov 2024



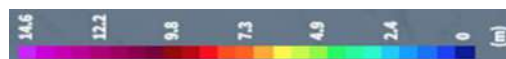
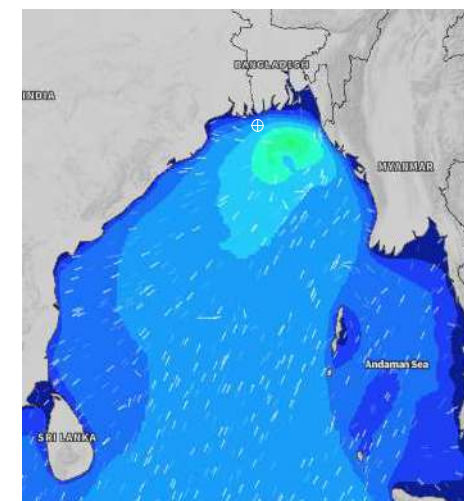
01 Dec 2024



02 Dec 2024



03 Dec 2024



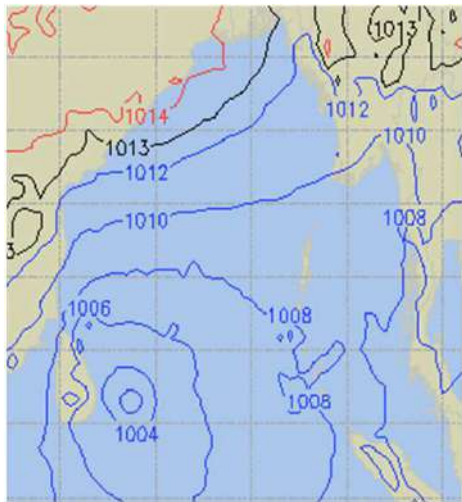
Significant wave height (m)



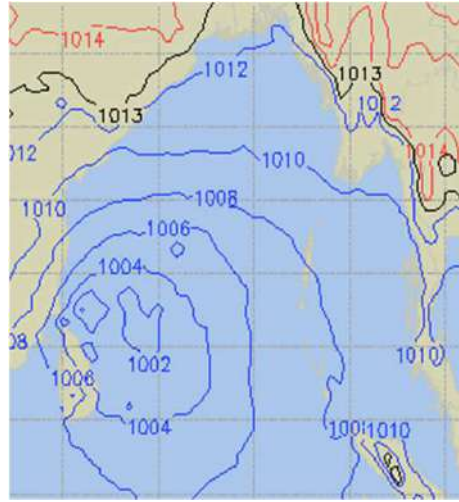
PREDICTED SURFACE PRESSURE FORECAST (26 Nov to 02 Dec 2024)



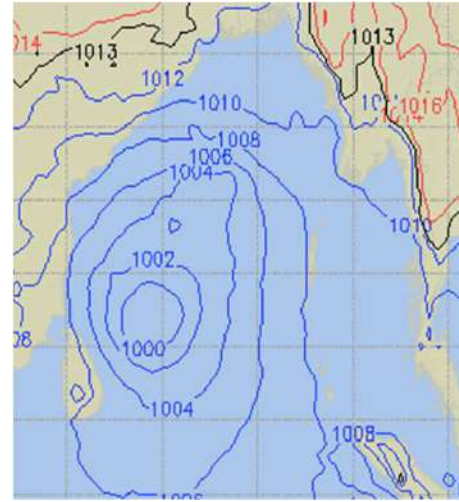
26 NOV 2024



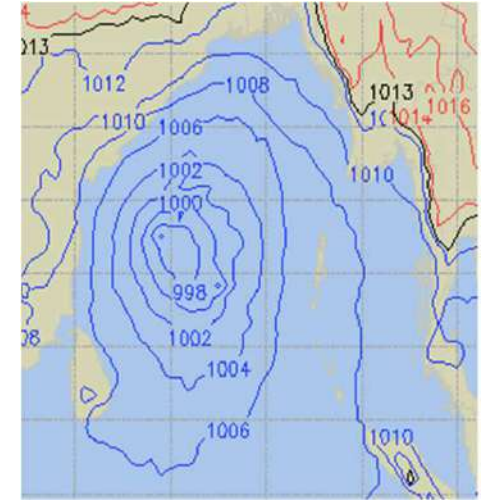
27 NOV 2024



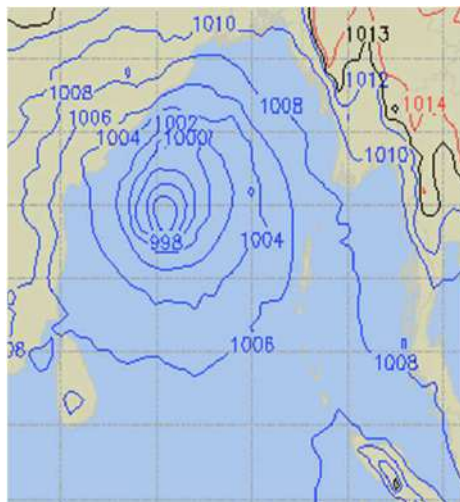
28 NOV 2024



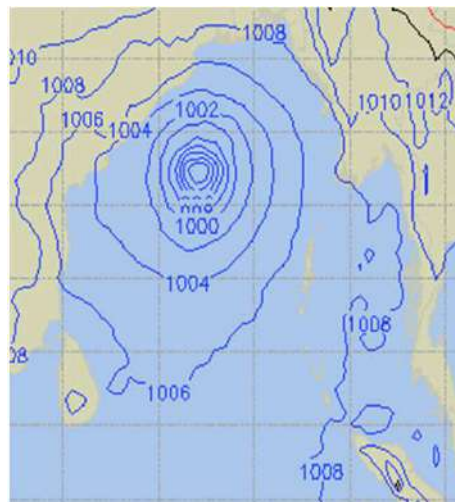
29 NOV 2024



30 NOV 2024



01 Dec 2024



02 Dec 2024

