



**SUMMARY OF MARINE WEATHER FORECAST**  
**COASTAL AREA OF BANGLADESH**  
**DATE: 25 Nov to 02 Dec 2024**



Fleet forecast	The low pressure area over Southeast Bay of Bengal and adjoining Equatorial Indian Ocean intensified into a well-marked low over the same area. It is likely to intensify further. Its associated trough extends up to North Bay.
Wind direction, speed	North/north-easterly 11 kts, (Temporary gusting up to 25 kts).
Wave height & sea state	Wave height: 0.1 to 2.6 m (Sea state:1 to 5).
Sea surface temperature	20°C - 26°C (May remain nearly unchanged).
Baro pressure	1006-1014 mb
Rainfall	Temporary partly cloudy over Bay of Bengal & adjoining area.
Fog	Light to moderate fog may occur at places over the country during late night till early morning.

**Outlook for 25 Nov to 02 Dec 2024:** Weather may remain mainly dry with temporary partly cloudy sky



# MARINE WEATHER FORECAST (25 Nov to 02 Dec 2024) NEAR AUTHORITY BUOY (22° 12' N, 091° 38' E)



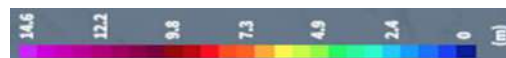
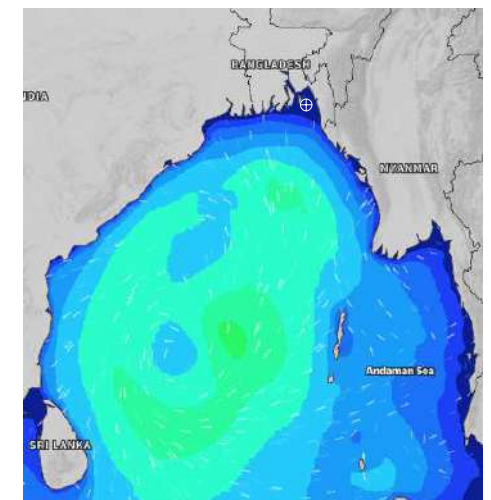
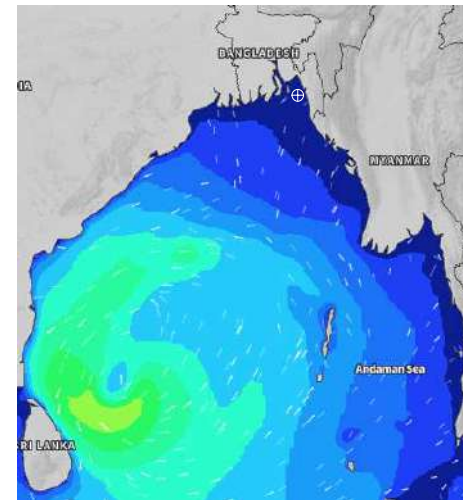
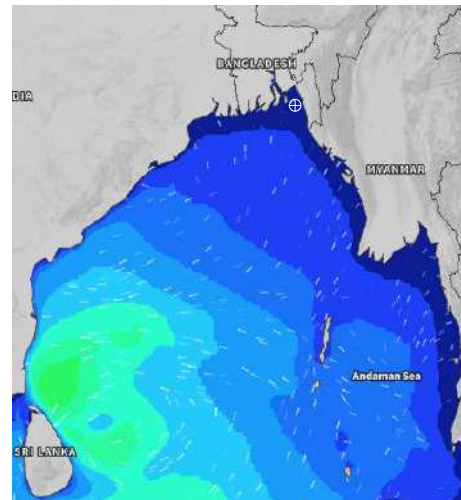
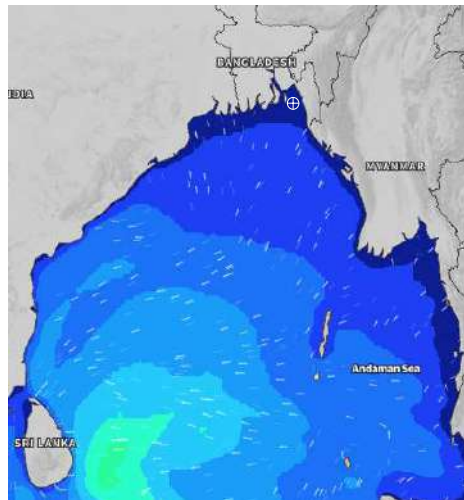
Date	Time	Air Temp (°C)		Sea Surface Temp (°C)	Baro Pressure (mbar)	Wind Direction	Wind Spd (kts)		Wave Ht (m)	Sea State	Humidity (%)	Prob of Rain
		Max	Min				Max	Avg				
25-11-24 (Monday)	0001	29	18	21	1014	NE	9	8	0.1	1	82	12% (0.0 mm)
	0600			20	1014	NNE	9	8	0.1	1	87	11% (0.0 mm)
	1200			24	1013	NW	8	7	0.1	1	53	11% (0.0 mm)
	1800			25	1012	NW	11	10	0.3	2	66	10% (0.0 mm)
26-11-24 (Tuesday)	0001	28	18	21	1013	NNE	9	8	0.2	2	82	10% (0.0 mm)
	0600			20	1013	NNE	8	7	0.1	2	86	12% (0.0 mm)
	1200			24	1012	NW	7	6	0.1	1	52	10% (0.0 mm)
	1800			24	1011	NW	7	6	0.1	1	63	10% (0.0 mm)
27-11-24 (Wednesday)	0001	28	20	21	1012	NE	8	7	0.1	1	80	10% (0.0 mm)
	0600			20	1012	NE	7	6	0.1	1	84	11% (0.0 mm)
	1200			24	1012	NNW	5	4	0.1	1	51	10% (0.0 mm)
	1800			24	1011	N	6	5	0.1	1	63	10% (0.0 mm)
28-11-24 (Thursday)	0001	27	22	21	1012	NE	5	4	0.1	1	79	10% (0.0 mm)
	0600			20	1012	SE	8	7	0.1	1	85	11% (0.0 mm)
	1200			24	1012	NE	8	7	0.1	1	52	10% (0.0 mm)
	1800			24	1011	NE	9	8	0.1	1	64	10% (0.0 mm)

**25 Nov 2024**

**26 Nov 2024**

**27 Nov 2024**

**28 Nov 2024**



Significant wave height (m)



# MARINE WEATHER FORECAST (25 Nov to 02 Dec 2024) NEAR AUTHORITY BUOY (22° 12' N, 091° 38' E)



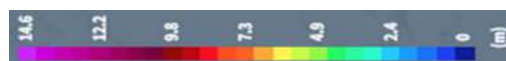
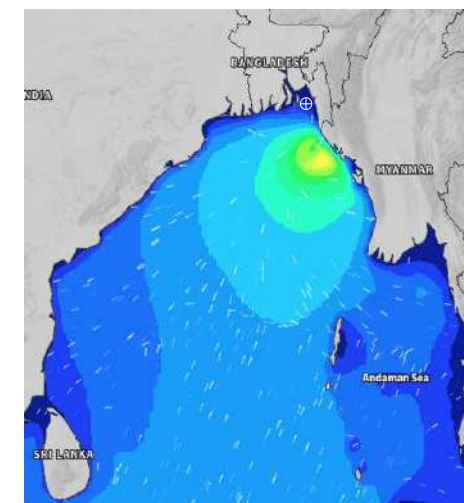
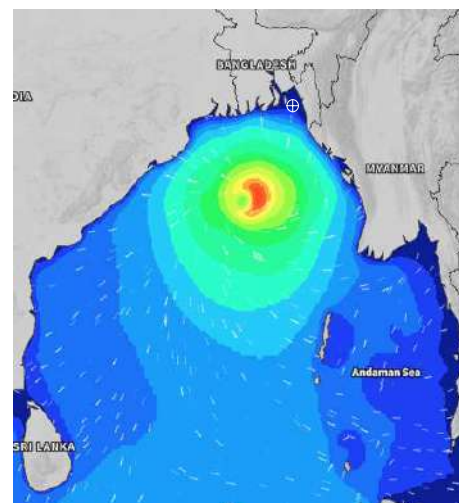
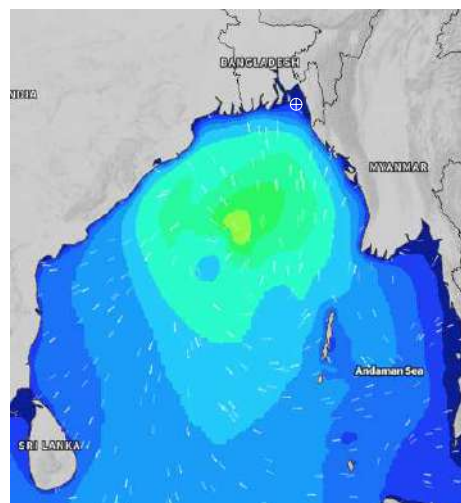
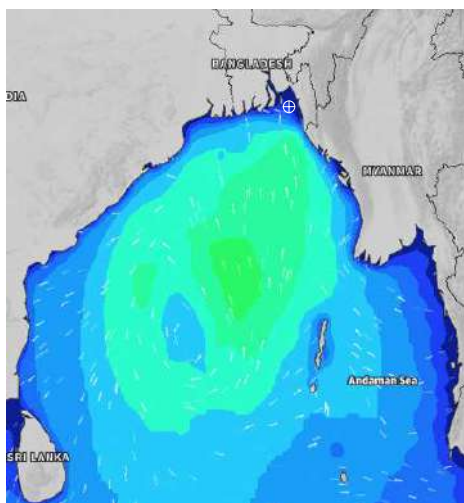
Date	Time	Air Temp (°C)		Sea Surface Temp (°C)	Baro Pressure (mbar)	Wind Direction	Wind Spd (kts)		Wave Ht (m)	Sea State	Humidity (%)	Prob of Rain
		Max	Min				Max	Avg				
29-11-24 (Friday)	0001	27	22	23	1010	NE	9	8	0.1	1	83	10% (0.0 mm)
	0600			22	1009	ENE	13	12	0.1	1	87	10% (0.0 mm)
	1200			22	1009	E	6	5	0.1	1	62	10% (0.0 mm)
	1800			21	1009	E	11	10	0.1	1	72	13% (0.0 mm)
30-11-24 (Saturday)	0001	28	22	21	1010	ENE	7	6	0.1	1	81	24% (0.0 mm)
	0600			21	1009	NE	9	8	0.1	1	86	51% (0.3 mm)
	1200			23	1009	S	4	3	0.1	1	70	58% (0.5 mm)
	1800			23	1007	E	5	4	0.1	1	81	45% (0.3 mm)
01-12-24 (Sunday)	0001	27	21	23	1010	E	9	8	0.1	1	90	50% (0.3 mm)
	0600			23	1009	E	6	5	0.1	1	89	56% (0.5 mm)
	1200			24	1009	ENE	7	6	0.1	1	72	44% (0.3 mm)
	1800			24	1009	ESE	10	9	0.1	1	80	24% (0.0 mm)
02-12-24 (Monday)	0001	28	20	23	1009	NE	9	7	0.1	1	91	10% (0.0 mm)
	0600			23	1008	NE	15	8	0.1	1	91	10% (0.0 mm)
	1200			25	1009	NE	10	8	0.1	1	70	13% (0.0 mm)
	1800			25	1008	N	13	8	0.1	1	81	24% (0.0 mm)

**29 Nov 2024**

**30 Nov 2024**

**01 Dec 2024**

**02 Dec 2024**



Significant wave height (m)



# MARINE WEATHER FORECAST (25 Nov to 02 Dec 2024)

## 20 NM WEST OF ELEPHANT POINT (21° 10' N, 091° 42' E)



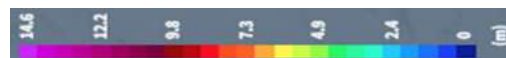
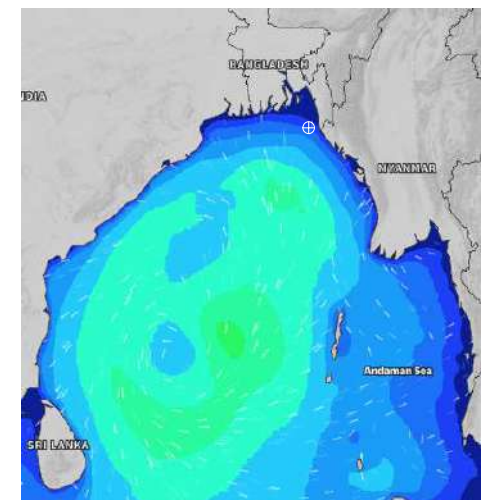
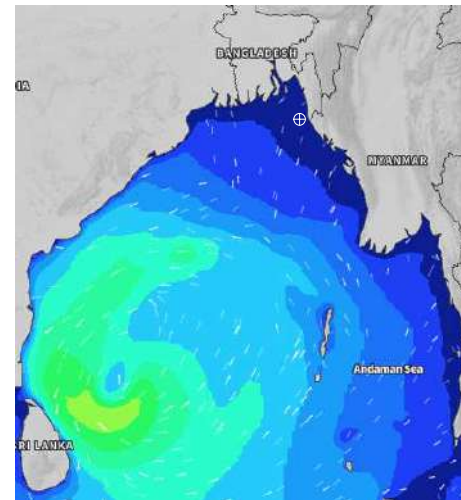
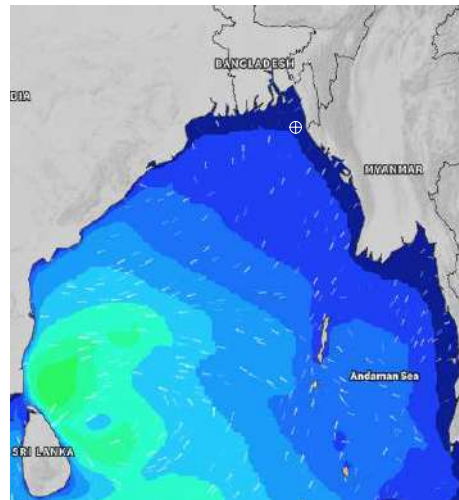
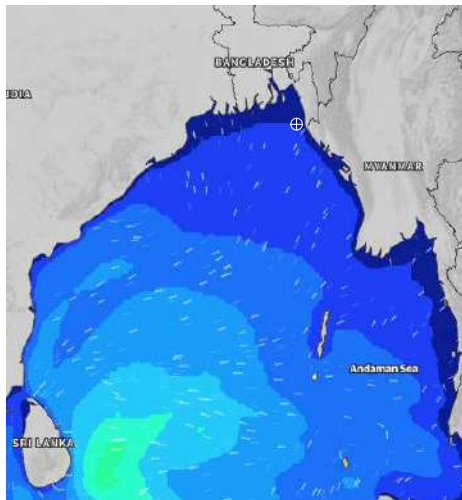
Date	Time	Air Temp (°C)		Sea Surface Temp (°C)	Baro Pressure (mbar)	Wind Direction	Wind Spd (kts)		Wave Ht (m)	Sea State	Humidity (%)	Prob of Rain
		Max	Min				Max	Avg				
25-11-24 (Monday)	0001	28	19	25	1014	N	9	8	0.6	3	85	10% (0.0 mm)
	0600			23	1013	N	14	13	0.6	3	87	11% (0.0 mm)
	1200			24	1013	N	12	11	0.6	3	52	10% (0.0 mm)
	1800			25	1012	NNW	13	12	0.7	3	67	10% (0.0 mm)
26-11-24 (Tuesday)	0001	28	19	25	1012	N	11	10	0.6	3	84	10% (0.0 mm)
	0600			23	1012	NNE	12	11	0.6	3	86	10% (0.0 mm)
	1200			24	1012	N	11	10	0.5	2	52	11% (0.0 mm)
	1800			25	1011	NNW	10	9	0.5	2	68	10% (0.0 mm)
27-11-24 (Wednesday)	0001	29	21	25	1012	NNE	9	8	0.4	2	82	10% (0.0 mm)
	0600			24	1011	NNE	11	10	0.5	2	84	10% (0.0 mm)
	1200			24	1012	N	10	9	0.4	2	52	10% (0.0 mm)
	1800			26	1011	NNW	9	8	0.4	2	69	11% (0.0 mm)
28-11-24 (Thursday)	0001	27	23	24	1012	WSW	4	3	0.4	2	80	10% (0.0 mm)
	0600			22	1011	NE	12	11	0.4	2	84	10% (0.0 mm)
	1200			24	1011	N	12	11	0.5	2	52	10% (0.0 mm)
	1800			25	1010	NNE	12	11	0.5	2	71	11% (0.0 mm)

**25 Nov 2024**

**26 Nov 2024**

**27 Nov 2024**

**28 Nov 2024**



Significant wave height (m)



# MARINE WEATHER FORECAST (25 Nov to 02 Dec 2024)

## 20 NM WEST OF ELEPHANT POINT (21° 10' N, 091° 42' E)



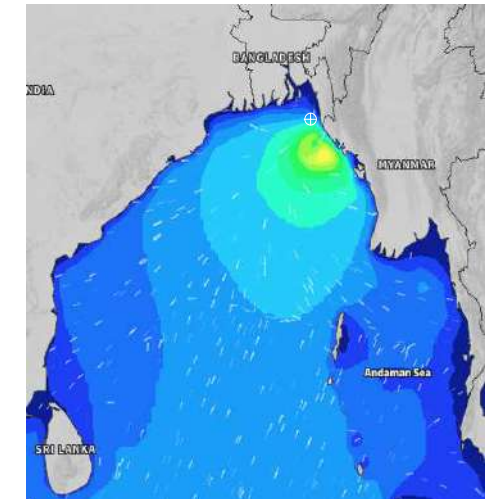
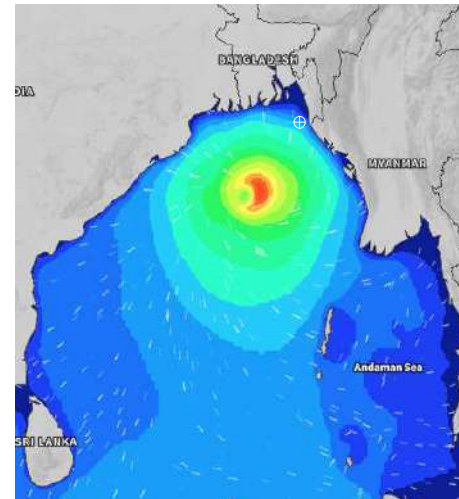
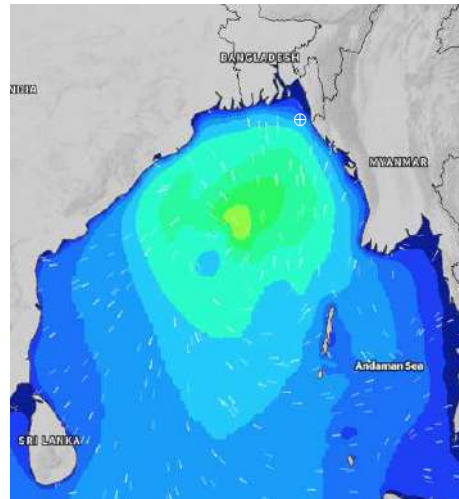
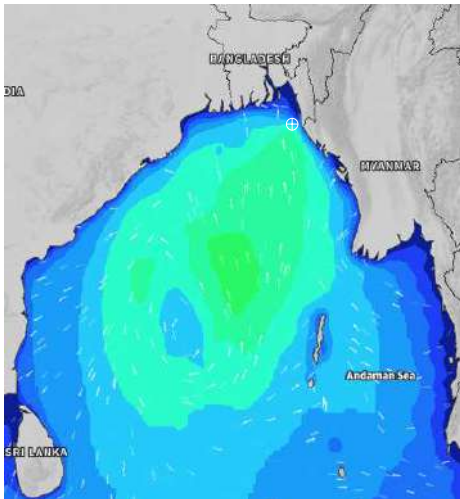
Date	Time	Air Temp (°C)		Sea Surface Temp (°C)	Baro Pressure (mbar)	Wind Direction	Wind Spd (kts)		Wave Ht (m)	Sea State	Humidity (%)	Prob of Rain
		Max	Min				Max	Avg				
29-11-24 (Friday)	0001	27	22	23	1009	ENE	11	7	1.7	4	80	12% (0.0 mm)
	0600			23	1009	NE	13	12	1.7	4	81	10% (0.0 mm)
	1200			23	1008	E	12	11	1.7	4	55	11% (0.0 mm)
	1800			24	1008	E	13	12	1.8	4	73	12% (0.0 mm)
30-11-24 (Saturday)	0001	28	23	24	1010	ESE	11	10	1.8	4	81	35% (0.0 mm)
	0600			23	1008	E	10	9	1.7	4	82	35% (0.2 mm)
	1200			24	1008	ESE	11	10	1.6	4	70	34% (0.2 mm)
	1800			23	1007	ESE	13	12	1.6	4	84	57% (0.5 mm)
01-12-24 (Sunday)	0001	28	22	24	1009	SE	16	15	1.6	4	89	71% (0.5 mm)
	0600			24	1008	ESE	17	16	1.7	4	89	58% (0.5 mm)
	1200			24	1009	SE	21	20	1.8	4	74	48% (0.4 mm)
	1800			24	1008	ESE	19	17	1.8	4	79	35% (0.2 mm)
02-12-24 (Monday)	0001	29	21	25	1008	ESE	15	14	2.1	4	90	22% (0.0 mm)
	0600			25	1008	NE	15	14	2.0	4	90	24% (0.0 mm)
	1200			26	1009	ENE	21	20	2.4	4	72	13% (0.0 mm)
	1800			26	1008	N	18	17	1.9	4	82	24% (0.0 mm)

**29 Nov 2024**

**30 Nov 2024**

**01 Dec 2024**

**02 Dec 2024**



Significant wave height (m)



# MARINE WEATHER FORECAST (25 Nov to 02 Dec 2024)

## 15 NM WEST OF ST. MARTIN'S LIGHT HOUSE (20° 37' N, 092° 03' E)



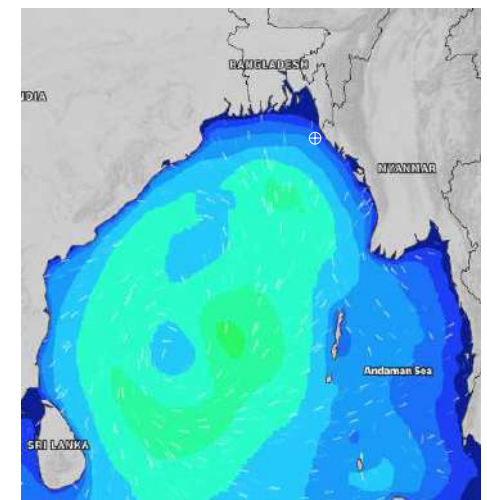
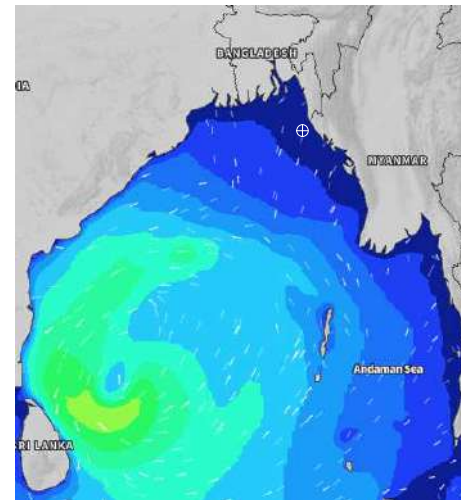
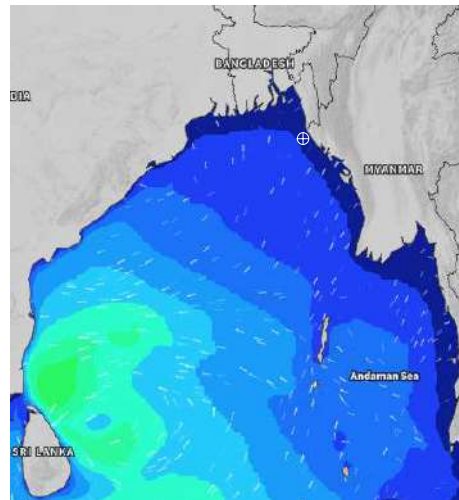
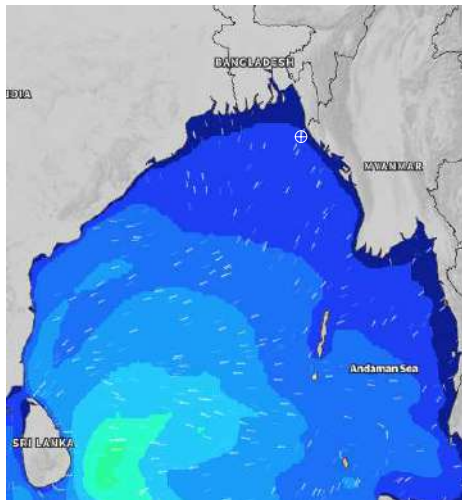
Date	Time	Air Temp (°C)		Sea Surface Temp (°C)	Baro Pressure (mbar)	Wind Direction	Wind Spd (kts)		Wave Ht (m)	Sea State	Humidity (%)	Prob of Rain
		Max	Min				Max	Avg				
25-11-24 (Monday)	0001	29	20	26	1014	NNW	9	8	0.8	3	81	10% (0.0 mm)
	0600			24	1012	N	14	12	0.8	3	82	10% (0.0 mm)
	1200			24	1014	N	13	12	0.8	3	54	11% (0.0 mm)
	1800			26	1011	NNW	14	13	0.8	3	66	10% (0.0 mm)
26-11-24 (Tuesday)	0001	29	20	26	1013	NNW	10	9	0.8	3	76	12% (0.0 mm)
	0600			24	1011	N	13	12	0.8	3	79	10% (0.0 mm)
	1200			24	1013	N	8	7	0.6	3	53	11% (0.0 mm)
	1800			26	1010	NNW	9	8	0.6	3	65	10% (0.0 mm)
27-11-24 (Wednesday)	0001	29	23	26	1012	N	9	8	0.6	3	77	11% (0.0 mm)
	0600			25	1010	NNE	8	7	0.6	3	80	10% (0.0 mm)
	1200			25	1012	N	7	6	0.5	2	54	11% (0.0 mm)
	1800			26	1010	NNW	7	6	0.5	2	67	10% (0.0 mm)
28-11-24 (Thursday)	0001	28	24	26	1012	NNW	7	6	0.5	2	79	11% (0.0 mm)
	0600			24	1010	NNE	14	13	0.6	3	80	10% (0.0 mm)
	1200			25	1012	NNE	9	8	0.6	3	54	11% (0.0 mm)
	1800			26	1012	SE	11	10	0.7	3	68	10% (0.0 mm)

**25 Nov 2024**

**26 Nov 2024**

**27 Nov 2024**

**28 Nov 2024**



Significant wave height (m)



# MARINE WEATHER FORECAST (25 Nov to 02 Dec 2024)

## 15 NM WEST OF ST. MARTIN'S LIGHT HOUSE (20° 37' N, 092° 03' E)



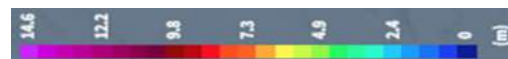
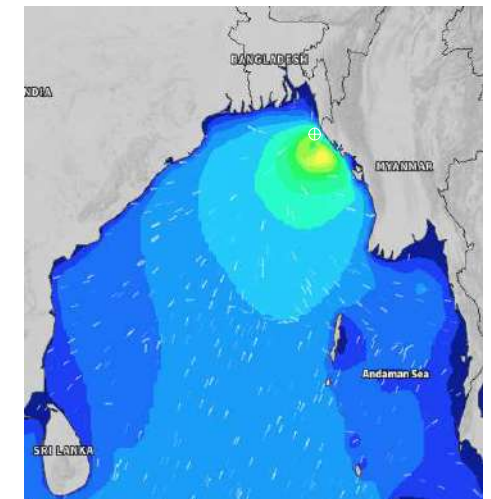
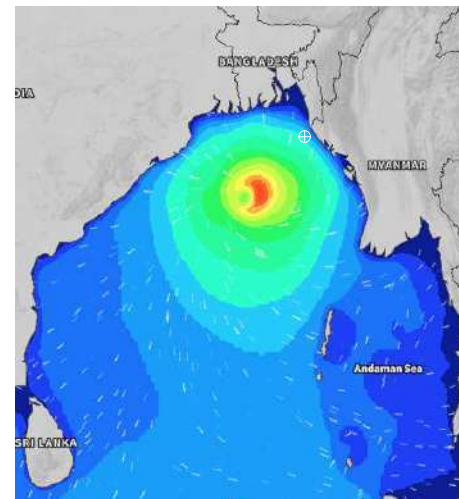
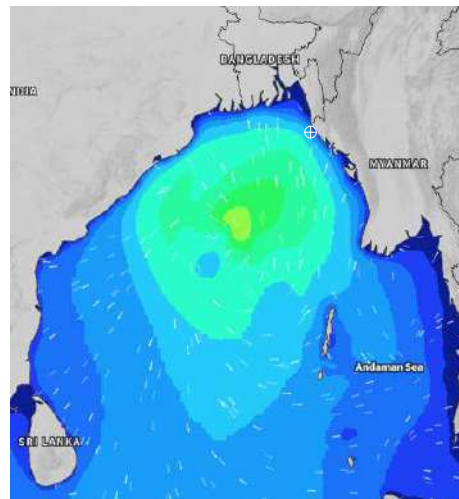
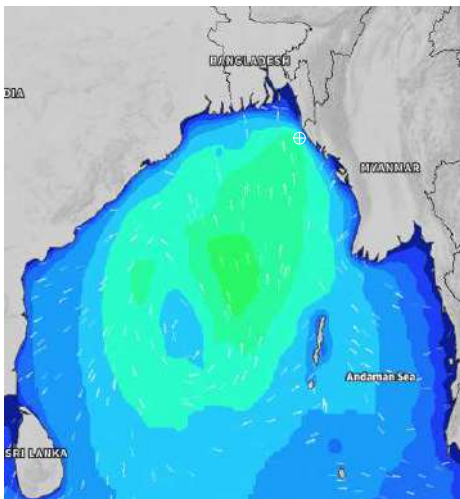
Date	Time	Air Temp (°C)		Sea Surface Temp (°C)	Baro Pressure (mbar)	Wind Direction	Wind Spd (kts)		Wave Ht (m)	Sea State	Humidity (%)	Prob of Rain
		Max	Min				Max	Avg				
29-11-24 (Friday)	0001	27	23	23	1009	E	16	15	2.5	4	77	10% (0.0 mm)
	0600			23	1007	ENE	16	15	2.6	5	76	11% (0.0 mm)
	1200			23	1010	ENE	17	16	2.6	5	58	10% (0.0 mm)
	1800			23	1006	E	19	18	2.6	5	72	11% (0.0 mm)
30-11-24 (Saturday)	0001	28	24	23	1010	E	14	13	2.6	5	78	24% (0.0 mm)
	0600			23	1008	E	12	11	2.2	4	77	33% (0.2 mm)
	1200			24	1010	ESE	15	14	2.2	4	73	52% (0.4 mm)
	1800			24	1006	ESE	20	19	2.3	4	81	51% (0.5 mm)
01-12-24 (Sunday)	0001	28	23	24	1010	E	17	16	2.1	4	86	65% (0.5 mm)
	0600			24	1008	E	19	18	2.2	4	85	64% (0.5 mm)
	1200			24	1010	E	22	20	2.4	4	76	64% (1.5 mm)
	1800			24	1007	ESE	23	21	2.5	4	71	52% (0.5 mm)
02-12-24 (Monday)	0001	29	22	25	1009	ESE	18	14	2.1	5	86	12% (0.0 mm)
	0600			25	1006	E	22	18	2.6	5	86	10% (0.0 mm)
	1200			24	1010	E	18	17	2.5	4	73	11% (0.0 mm)
	1800			25	1006	ENE	14	13	2.3	4	78	12% (0.0 mm)

**29 Nov 2024**

**30 Nov 2024**

**01 Dec 2024**

**02 Dec 2024**



Significant wave height (m)



# MARINE WEATHER FORECAST (25 Nov to 02 Dec 2024)

## 40 NM EAST OF PAYRA FAIRWAY (21° 07' N, 090° 45' E)



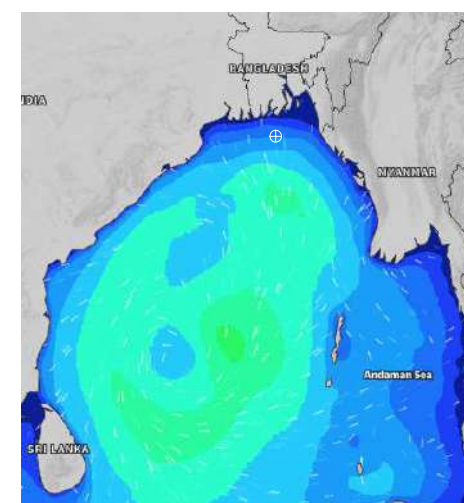
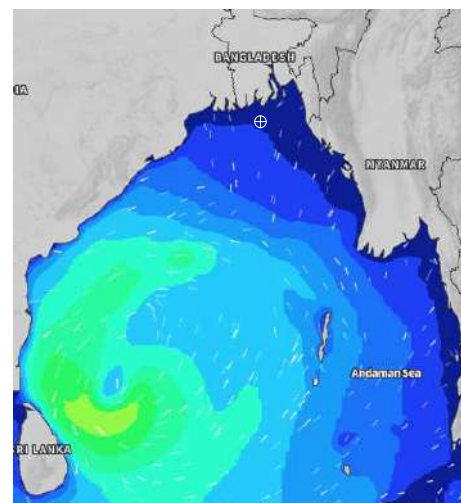
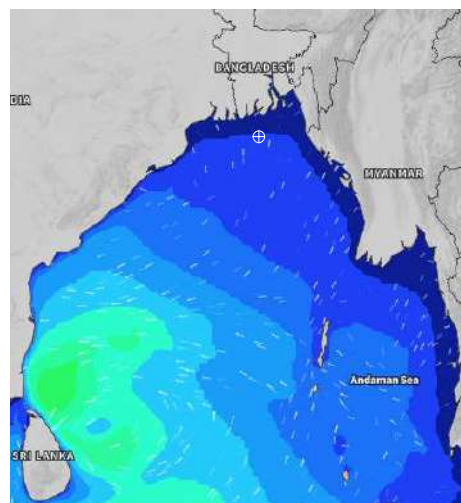
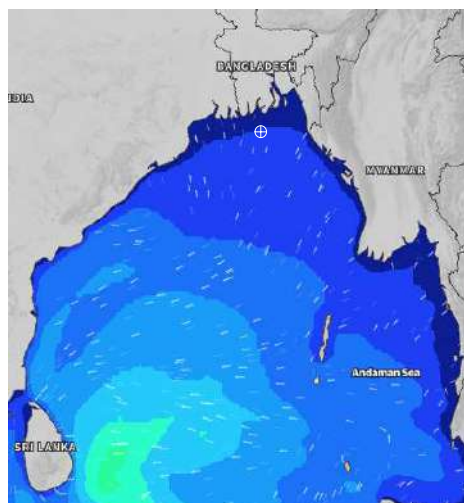
Date	Time	Air Temp (°C)		Sea Surface Temp (°C)	Baro Pressure (mbar)	Wind Direction	Wind Spd (kts)		Wave Ht (m)	Sea State	Humidity (%)	Prob of Rain
		Max	Min				Max	Avg				
25-11-24 (Monday)	0001	27	18	25	1014	NNW	8	7	0.7	3	80	11% (0.0 mm)
	0600			24	1014	N	13	12	0.7	3	83	10% (0.0 mm)
	1200			24	1014	NNE	12	11	0.8	3	55	11% (0.0 mm)
	1800			25	1012	N	12	11	0.8	3	69	10% (0.0 mm)
26-11-24 (Tuesday)	0001	28	18	24	1013	NNW	12	11	0.7	3	84	11% (0.0 mm)
	0600			24	1012	N	13	12	0.8	3	84	10% (0.0 mm)
	1200			24	1013	N	10	9	0.7	3	51	11% (0.0 mm)
	1800			24	1011	N	9	8	0.6	3	67	10% (0.0 mm)
27-11-24 (Wednesday)	0001	27	20	25	1012	N	9	8	0.5	2	83	11% (0.0 mm)
	0600			25	1011	N	12	11	0.6	3	83	15% (0.0 mm)
	1200			25	1012	NNE	11	10	0.6	3	52	12% (0.0 mm)
	1800			25	1011	NNE	9	8	0.6	3	68	10% (0.0 mm)
28-11-24 (Thursday)	0001	26	21	22	1012	SE	5	4	0.5	2	81	11% (0.0 mm)
	0600			21	1011	NNE	11	10	0.5	2	84	12% (0.0 mm)
	1200			23	1012	NNE	11	10	0.6	3	54	12% (0.0 mm)
	1800			24	1011	NE	12	11	0.8	3	65	10% (0.0 mm)

**25 Nov 2024**

**26 Nov 2024**

**27 Nov 2024**

**28 Nov 2024**



Significant wave height (m)





# MARINE WEATHER FORECAST (25 Nov to 02 Dec 2024)

## 40 NM EAST OF PAYRA FAIRWAY (21° 07' N, 090° 45' E)



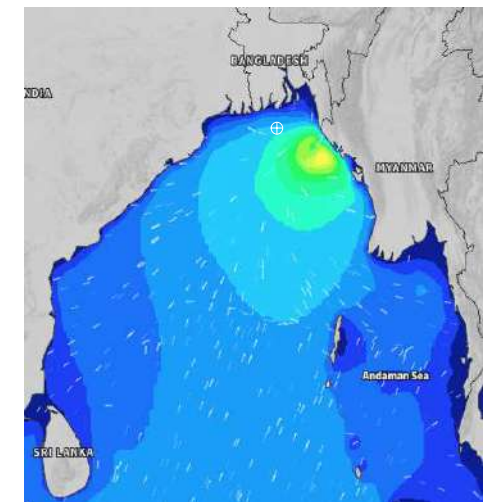
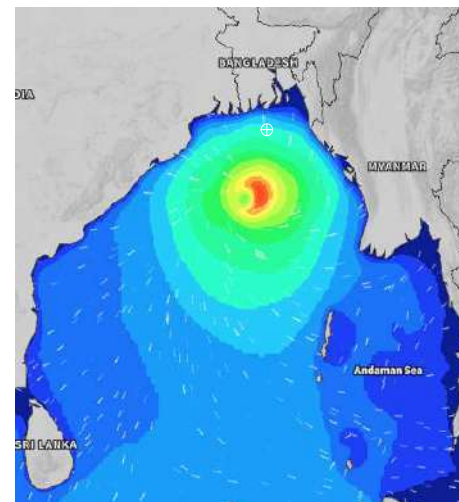
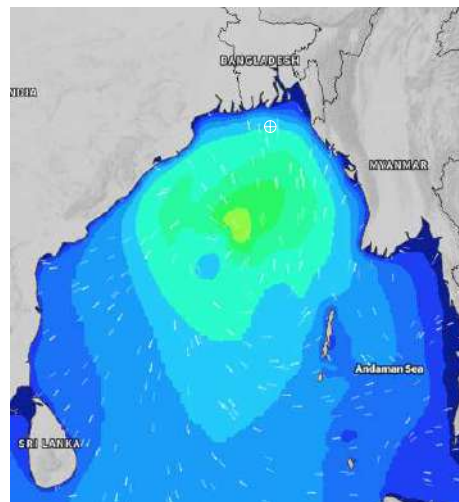
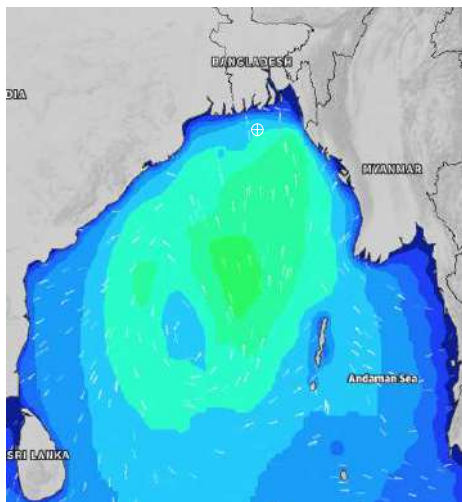
Date	Time	Air Temp (°C)		Sea Surface Temp (°C)	Baro Pressure (mbar)	Wind Direction	Wind Spd (kts)		Wave Ht (m)	Sea State	Humidity (%)	Prob of Rain
		Max	Min				Max	Avg				
29-11-24 (Friday)	0001	27	22	24	1009	ESE	23	22	2.6	5	81	12% (0.0 mm)
	0600			24	1008	ENE	15	14	2.6	5	81	10% (0.0 mm)
	1200			24	1008	E	14	13	2.4	4	53	11% (0.0 mm)
	1800			24	1008	ENE	10	10	2.4	4	68	12% (0.0 mm)
30-11-24 (Saturday)	0001	27	22	25	1009	E	11	10	2.4	4	79	34% (0.2 mm)
	0600			24	1008	ENE	13	12	2.3	4	82	44% (0.4 mm)
	1200			24	1008	E	11	10	2.3	4	66	32% (0.2 mm)
	1800			25	1007	E	14	12	2.1	4	79	32% (0.2 mm)
01-12-24 (Sunday)	0001	26	21	25	1008	ESE	19	18	2.3	4	88	56% (0.4 mm)
	0600			25	1007	ESE	15	14	2.3	4	89	66% (0.5 mm)
	1200			25	1008	SE	16	15	2.4	4	70	57% (0.9 mm)
	1800			25	1007	ESE	24	24	2.6	5	81	51% (0.4 mm)
02-12-24 (Monday)	0001	27	20	25	1006	E	20	19	2.6	5	90	22% (0.0 mm)
	0600			25	1007	NE	23	20	2.6	5	90	19% (0.0 mm)
	1200			25	1008	NNE	24	22	2.6	5	70	23% (0.0 mm)
	1800			25	1007	N	20	19	2.6	5	79	24% (0.0 mm)

**29 Nov 2024**

**30 Nov 2024**

**01 Dec 2024**

**02 Dec 2024**



Significant wave height (m)



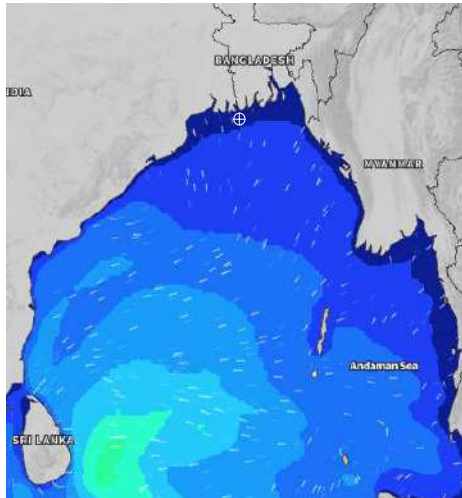
# MARINE WEATHER FORECAST (25 Nov to 02 Dec 2024)

## 10 NM SOUTH OF MONGLA FAIRWAY (21° 16' N, 089° 34' E)

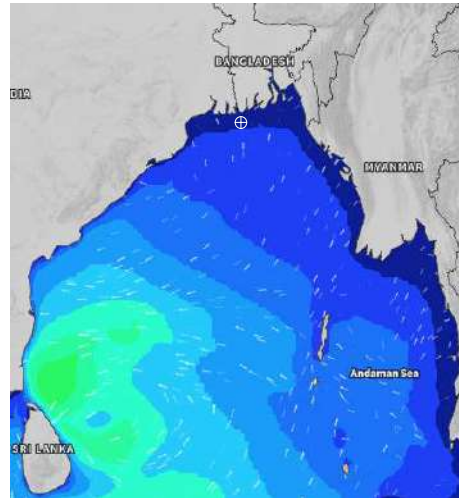


Date	Time	Air Temp (°C)		Sea Surface Temp (°C)	Baro Pressure (mbar)	Wind Direction	Wind Spd (kts)		Wave Ht (m)	Sea State	Humidity (%)	Prob of Rain
		Max	Min				Max	Avg				
25-11-24 (Monday)	0001	28	17	25	1015	NNW	7	6	0.5	2	87	10% (0.0 mm)
	0600			24	1014	N	11	10	0.5	2	91	11% (0.0 mm)
	1200			24	1014	NNE	12	11	0.6	3	50	11% (0.0 mm)
	1800			25	1012	NE	4	3	0.5	2	64	12% (0.0 mm)
26-11-24 (Tuesday)	0001	28	17	25	1013	N	9	8	0.5	2	85	11% (0.0 mm)
	0600			24	1013	NNE	13	12	0.7	3	90	12% (0.0 mm)
	1200			24	1013	NNE	10	8	0.6	3	47	10% (0.0 mm)
	1800			25	1011	E	9	8	0.6	3	65	12% (0.0 mm)
27-11-24 (Wednesday)	0001	28	18	25	1012	NNW	7	6	0.5	2	86	11% (0.0 mm)
	0600			24	1012	NNE	11	10	0.6	3	91	12% (0.0 mm)
	1200			24	1012	NNE	9	8	0.6	3	48	10% (0.0 mm)
	1800			25	1011	NE	8	7	0.5	2	65	12% (0.0 mm)
28-11-24 (Thursday)	0001	27	20	25	1012	E	4	3	0.5	2	84	11% (0.0 mm)
	0600			25	1011	NE	8	7	0.5	2	90	12% (0.0 mm)
	1200			23	1012	ENE	11	10	0.6	3	49	10% (0.0 mm)
	1800			22	1011	NE	11	10	0.7	3	65	10% (0.0 mm)

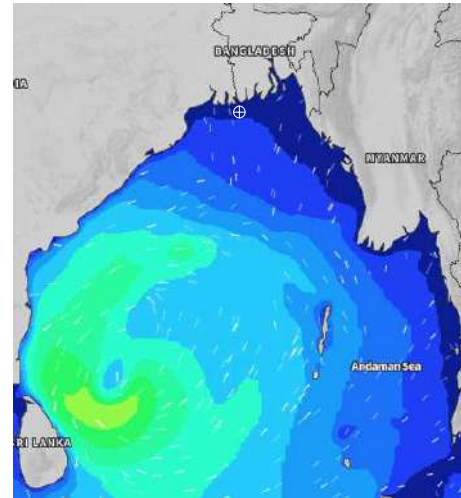
**25 Nov 2024**



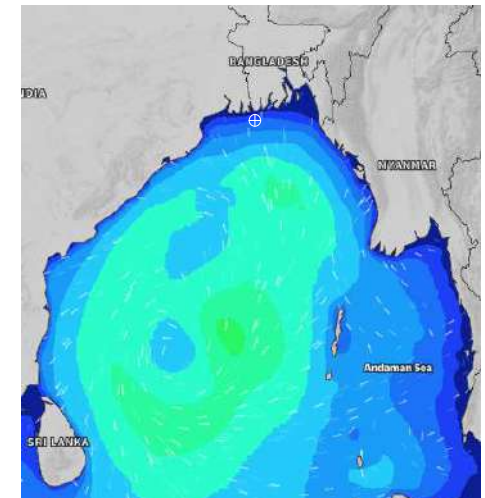
**26 Nov 2024**



**27 Nov 2024**



**28 Nov 2024**



Significant wave height (m)



# MARINE WEATHER FORECAST (25 Nov to 02 Dec 2024)

## 10 NM SOUTH OF MONGLA FAIRWAY (21° 16' N, 089° 34' E)



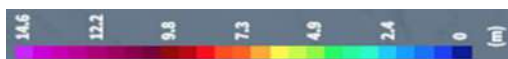
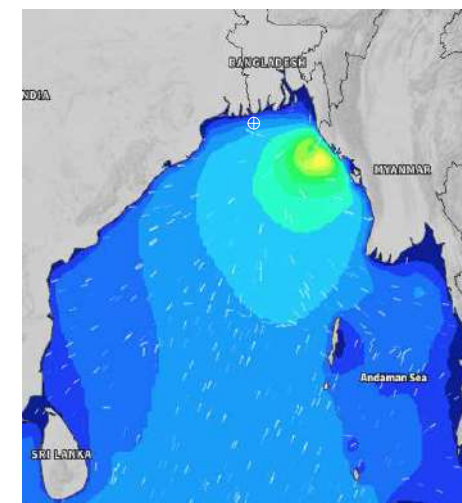
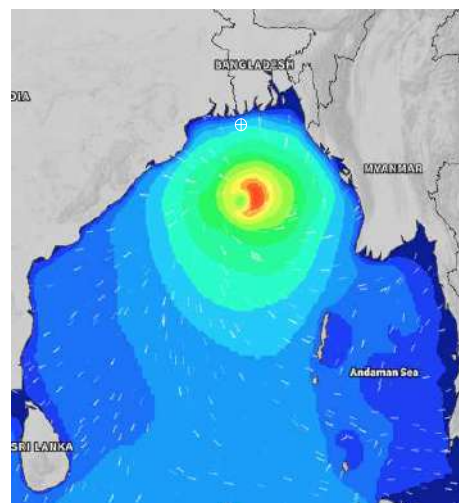
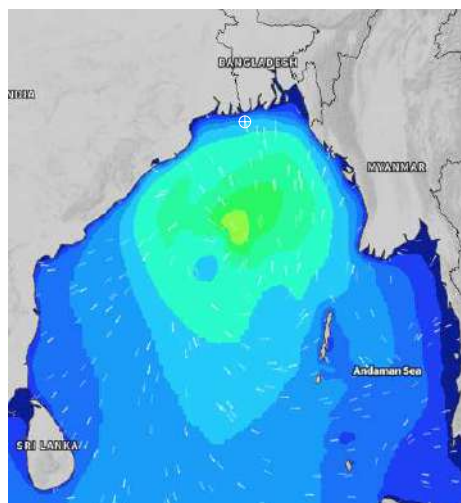
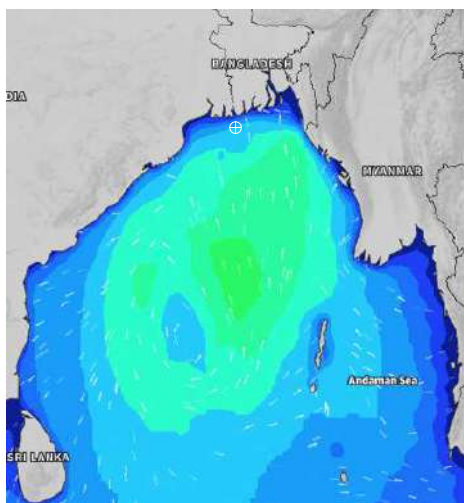
Date	Time	Air Temp (°C)		Sea Surface Temp (°C)	Baro Pressure (mbar)	Wind Direction	Wind Spd (kts)		Wave Ht (m)	Sea State	Humidity (%)	Prob of Rain
		Max	Min				Max	Avg				
29-11-24 (Friday)	0001	27	20	25	1009	E	18	16	2.6	5	83	11% (0.0 mm)
	0600			25	1008	ENE	19	18	2.6	5	89	11% (0.0 mm)
	1200			24	1009	ENE	15	14	2.3	4	51	12% (0.0 mm)
	1800			24	1008	ENE	13	12	2.3	4	65	10% (0.0 mm)
30-11-24 (Saturday)	0001	27	21	24	1009	NE	14	13	2.2	4	82	24% (0.0 mm)
	0600			24	1008	ENE	14	12	2.3	4	87	30% (0.2 mm)
	1200			24	1008	ENE	14	13	2.3	4	51	32% (0.2 mm)
	1800			24	1007	ENE	14	13	2.1	4	76	24% (0.0 mm)
01-12-24 (Sunday)	0001	26	20	25	1007	ENE	11	10	2.0	4	89	32% (0.2 mm)
	0600			24	1006	E	13	12	2.1	4	92	34% (0.2 mm)
	1200			24	1007	E	9	8	2.2	4	65	31% (0.1 mm)
	1800			24	1006	E	13	12	2.6	5	67	24% (0.0 mm)
02-12-24 (Monday)	0001	27	18	25	1006	ENE	17	16	2.6	5	91	22% (0.0 mm)
	0600			25	1006	NNE	19	18	2.6	5	92	19% (0.0 mm)
	1200			24	1007	N	17	16	2.4	4	67	23% (0.0 mm)
	1800			26	1006	NNW	13	12	1.8	4	76	24% (0.0 mm)

**29 Nov 2024**

**30 Nov 2024**

**01 Dec 2024**

**02 Dec 2024**



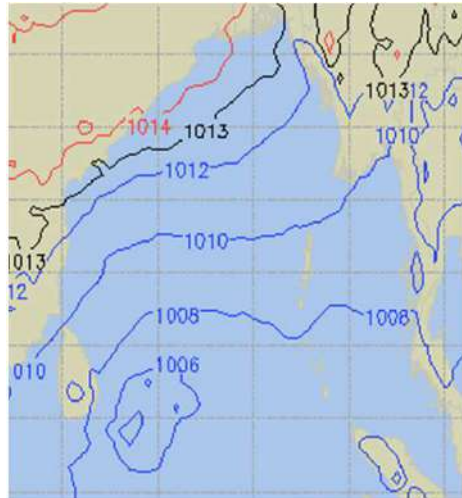
Significant wave height (m)



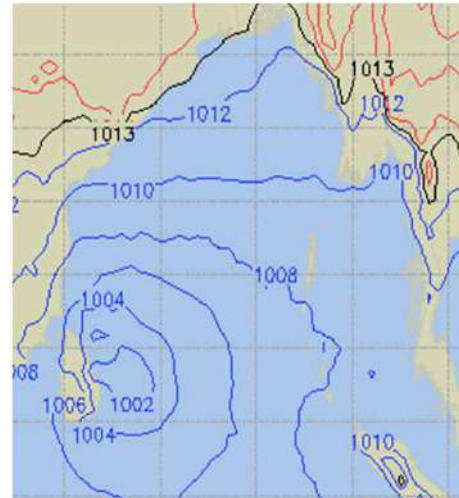
# PREDICTED SURFACE PRESSURE FORECAST (25 Nov to 01 Dec 2024)



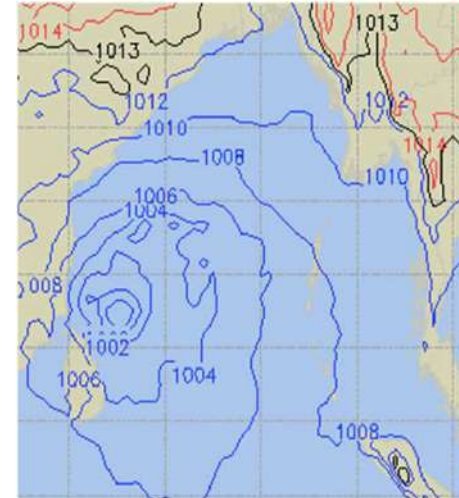
**25 NOV 2024**



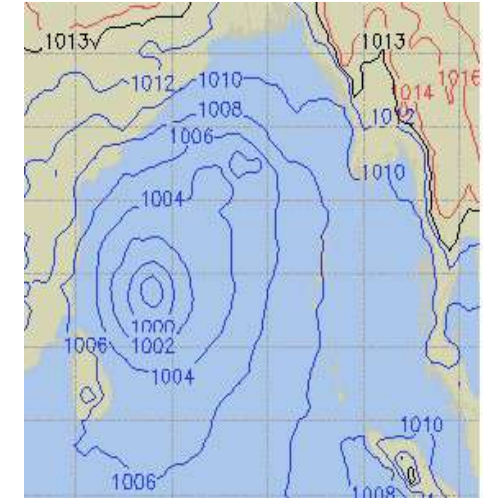
**26 NOV 2024**



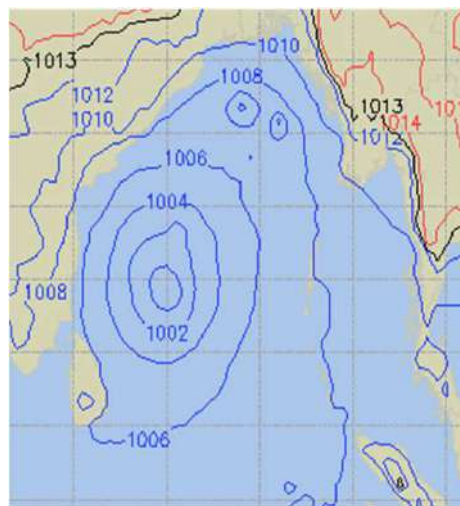
**27 NOV 2024**



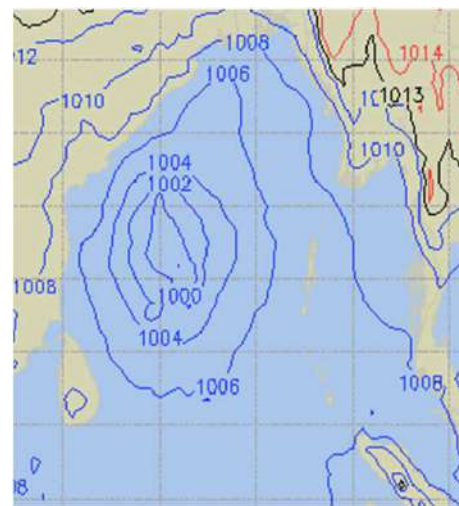
**28 NOV 2024**



**29 NOV 2024**



**30 NOV 2024**



**01 Dec 2024**

